

TRACT 41331 - Cameron Parish, Louisiana

All lands, including lands added by accretion and reliction and lands now or formerly constituting the beds and bottoms of all water bodies of every nature and description, owned by and not presently under mineral lease as of March 10, 2010 from the State of Louisiana, situated in Cameron Parish, Louisiana, and being more fully described as follows: Beginning at a point on the West line of Block 2, West Cameron Area, Revised, also being the Southernmost point of State Lease No. 20086 and the Southwest corner of State Lease No. 20087, having Coordinates of X = 1,405,806.20 and Y = 399,719.00; thence South 55 degrees 08 minutes 22 seconds East 915.00 feet along the Southern boundary of said State Lease No. 20087 to its Southeast corner, also being the Southwest corner of State Lease No. 19031 having Coordinates of X = 1,406,557.00 and Y = 399,196.00; thence South 63 degrees 26 minutes 06 seconds East 1,470.82 feet along the boundary of said State Lease No. 19031 to a point having Coordinates of X = 1,407,872.55 and Y = 398,538.23; thence South 53 degrees 38 minutes 31 seconds West 2,565.85 feet to a point on the West line of said Block 2, West Cameron Area, Revised, also being a point on the East line of Block 3, West Cameron Area, Revised, having Coordinates of X = 1,405,806.20 and Y = 397,017.11; thence South 53 degrees 38 minutes 30 seconds West 2,112.09 feet to a point having Coordinates of X = 1,404,105.28 and Y = 395,765.00; thence West 795.28 feet to a point having Coordinates of X = 1,403,310.00 and Y = 395,765.00; thence South 1,974.76 feet to a point on the South line of said Block 3, West Cameron Area, Revised, having Coordinates of X = 1,403,310.00 and Y = 393,790.24; thence West 4,681.05 feet along the boundary of the South line of said Block 3, West Cameron Area, Revised, to a point having Coordinates of X = 1,398,628.96 and Y = 393,790.24; thence North 14,945.64 feet to a point on the Louisiana Coastline, as decreed by the Supreme Court of the United States, as determined by a Special Master appointed therein, in litigation styled United States v. State of Louisiana et al No. 9 Original, in 1975, having Coordinates of X = 1,398,628.96 and Y = 408,735.88; thence along said Louisiana Coastline the following courses: Southeasterly on a straight line to a point having Coordinates of X = 1,402,525.00 and Y = 408,365.00, Southeasterly on a straight line to the Northeast corner of said Block 3, West Cameron Area, Revised, also being the Northwest corner of Block 2, West Cameron Area, Revised, having Coordinates of X = 1,405,806.20 and Y = 407,818.13, Southeasterly on a straight line to a point on the Northernmost Northwest corner of State Lease No. 20087 having Coordinates of X = 1,406,451.74 and Y = 407,710.54, thence South 74 degrees 22 minutes 29 seconds West 670.31 feet along the Northern boundary of said State Lease No. 20087 to its Southernmost Northwest corner, also being a point on the West line of said Block 2, West Cameron Area, Revised, said point also being the Northernmost point of said State Lease No. 20086 having Coordinates of X = 1,405,806.20 and Y = 407,530.00; thence along the said boundary of State Lease No. 20086 the following courses: South 60 degrees 11 minutes 30 seconds West 583.38 feet to a point having Coordinates of X = 1,405,300.00 and Y = 407,240.00; South 40 degrees 00 minutes 23 seconds West 731.10 feet to a point having Coordinates of X = 1,404,830.00 and Y = 406,680.00; South 35 degrees 58 minutes 08 seconds West 2,162.27 feet to a

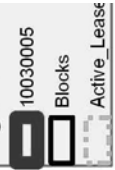
point having Coordinates of X = 1,403,560.00 and Y = 404,930.00; South 21 degrees 42 minutes 28 seconds West 2,271.06 feet to a point having Coordinates of X = 1,402,720.00 and Y = 402,820.00; South 23 degrees 57 minutes 45 seconds East 787.91 feet to a point having Coordinates of X = 1,403,040.00 and Y = 402,100.00; South 47 degrees 55 minutes 44 seconds East 1,522.27 feet to a point having Coordinates of X = 1,404,170.00 and Y = 401,080.00; South 50 degrees 14 minutes 46 seconds East 2,128.26 feet to the point of beginning, containing approximately **1993.25 acres**, all as more particularly outlined on a plat on file in the Office of Mineral Resources, Department of Natural Resources. All bearings, distances and coordinates are based on Louisiana Coordinate System of 1927, (North or South Zone), where applicable.

NOTE: The above description of the Tract nominated for lease has been provided and corrected, where required, exclusively by the nomination party. Any mineral lease selected from this Tract and awarded by the Louisiana State Mineral Board shall be without warranty of any kind, either express, implied, or statutory, including, but not limited to, the implied warranties of merchantability and fitness for a particular purpose. Should the mineral lease awarded by the Louisiana State Mineral Board be subsequently modified, cancelled or abrogated due to the existence of conflicting leases, operating agreements, private claims or other future obligations or conditions which may affect all or any portion of the leased Tract, it shall not relieve the Lessee of the obligation to pay any bonus due thereon to the Louisiana State Mineral Board, nor shall the Louisiana State Mineral Board be obligated to refund any consideration paid by the Lessor prior to such modification, cancellation, or abrogation, including, but not limited to, bonuses, rentals and royalties.

NOTE: The State of Louisiana does hereby reserve, and this lease shall be subject to, the imprescriptible right of surface use in the nature of a servitude in favor of the Department of Natural Resources, including its Offices and Commissions, for the sole purpose of implementing, constructing, servicing and maintaining approved coastal zone management and/or restoration projects. Utilization of any and all rights derived under this lease by the mineral lessee, its agents, successors or assigns, shall not interfere with nor hinder the reasonable surface use by the Department of Natural Resources, its Offices or Commissions, as herein above reserved.

Applicant: AUDUBON OIL AND GAS CORPORATION

Bidder	Cash Payment	Price/Acre	Rental	Oil	Gas	Other



CAMERON PARISH



TRACT 41332 - Cameron Parish, Louisiana

All lands, including lands added by accretion and reliction and lands now or formerly constituting the beds and bottoms of all water bodies of every nature and description, owned by and not presently under mineral lease as of March 10, 2010 from the State of Louisiana, situated in Cameron Parish, Louisiana, and being more fully described as follows: Beginning at a point on the South line of Block 2, West Cameron Area, Revised, also being the Northwest corner of Block 29, West Cameron Area, Revised, and Northeast corner of Block 28, West Cameron Area, Revised, having Coordinates of X = 1,406,209.76 and Y = 393,790.24; thence West 403.56 feet along the South line of said Block 2, West Cameron Area, Revised, to its Southwest corner, also being the Southeast corner of Block 3, West Cameron Area, Revised, having Coordinates of X = 1,405,806.20 and Y = 393,790.24; thence West 2,496.20 feet along the South line of said Block 3, West Cameron Area, Revised, to a point having Coordinates of X = 1,403,310.00 and Y = 393,790.24; thence North 1,974.76 feet to a point having Coordinates of X = 1,403,310.00 and Y = 395,765.00; thence East 795.28 feet to a point having Coordinates of X = 1,404,105.28 and Y = 395,765.00; thence North 53 degrees 38 minutes 30 seconds East 2,112.09 feet to a point on the East line of said Block 3, West Cameron Area, Revised, also being a point on the West line of said Block 2, West Cameron Area, Revised, having Coordinates of X = 1,405,806.20 and Y = 397,017.11; thence North 53 degrees 38 minutes 30 seconds East 2,565.85 feet to a point on the Southern boundary of State Lease No. 19031, having Coordinates of X = 1,407,872.55 and Y = 398,538.23; thence South 63 degrees 26 minutes 06 seconds East 812.20 feet along the Southern boundary of said State Lease No. 19031, to its Southeast corner, also being the Southwest corner of State Lease No. 18524, having Coordinates of X = 1,408,599.00 and Y = 398,175.00; thence East 1,201.00 feet along the boundary of said State Lease No. 18524, to its Southeast corner, also being the Southwest corner of State Lease No. 19192 having Coordinates of X = 1,409,800.00 and Y = 398,175.00; thence South 63 degrees 26 minutes 06 seconds East 2,403.77 feet along the Southern boundary of said State Lease No. 19192 to its Southernmost point having Coordinates of X = 1,411,950.00 and Y = 397,100.00; thence North 39 degrees 02 minutes 39 seconds East 2,341.10 feet along the Easternmost boundary of said State Lease No. 19192 to its Northeast corner, also being the Southeast corner of State Lease No. 19190 having Coordinates of X = 1,413,424.71 and Y = 398,918.24; thence North 39 degrees 02 minutes 39 seconds East 684.68 feet along the Easternmost boundary of said State Lease No. 19190 to a point having Coordinates of X = 1,413,856.00 and Y = 399,450.00; thence North 3,156.00 feet along the Easternmost boundary of said State Lease No. 19190 to its Northeast corner, also being the Southeast corner of State Lease No. 18521 having Coordinates of X = 1,413,856.00 and Y = 402,606.00; thence North 1,576.00 feet along the Easternmost boundary of said State Lease No. 18521 having Coordinates of X = 1,413,856.00 and Y = 404,182.00; thence North 41 degrees 25 minutes 49 seconds West 3,462.25 feet along the Easternmost boundary of said State Lease No. 18521, to its Northernmost point, to a point on the Louisiana Coastline, as decreed by the Supreme Court of the

United States, as determined by a Special Master appointed therein, in litigation styled United States v. State of Louisiana et al No. 9 Original, in 1975, having Coordinates of X = 1,411,565.00 and Y = 406,777.87; thence along Louisiana Coastline the following courses: South 77 degrees 20 minutes 38 seconds East 4,919.54 feet to a point having Coordinates of X = 1,416,365.00 and Y = 405,700.00, thence South 11,909.76 feet to a point on the South line of said Block 2, West Cameron Area, Revised having Coordinates of X = 1,416,365.00 and Y = 393,790.24; thence West 10,155.25 feet along the South line of said Block 2, West Cameron Area, Revised, to the point of beginning, containing approximately **1666.88 acres**, all as more particularly outlined on a plat on file in the Office of Mineral Resources, Department of Natural Resources. All bearings, distances and coordinates are based on Louisiana Coordinate System of 1927, (North or South Zone), where applicable.

NOTE: The above description of the Tract nominated for lease has been provided and corrected, where required, exclusively by the nomination party. Any mineral lease selected from this Tract and awarded by the Louisiana State Mineral Board shall be without warranty of any kind, either express, implied, or statutory, including, but not limited to, the implied warranties of merchantability and fitness for a particular purpose. Should the mineral lease awarded by the Louisiana State Mineral Board be subsequently modified, cancelled or abrogated due to the existence of conflicting leases, operating agreements, private claims or other future obligations or conditions which may affect all or any portion of the leased Tract, it shall not relieve the Lessee of the obligation to pay any bonus due thereon to the Louisiana State Mineral Board, nor shall the Louisiana State Mineral Board be obligated to refund any consideration paid by the Lessor prior to such modification, cancellation, or abrogation, including, but not limited to, bonuses, rentals and royalties.

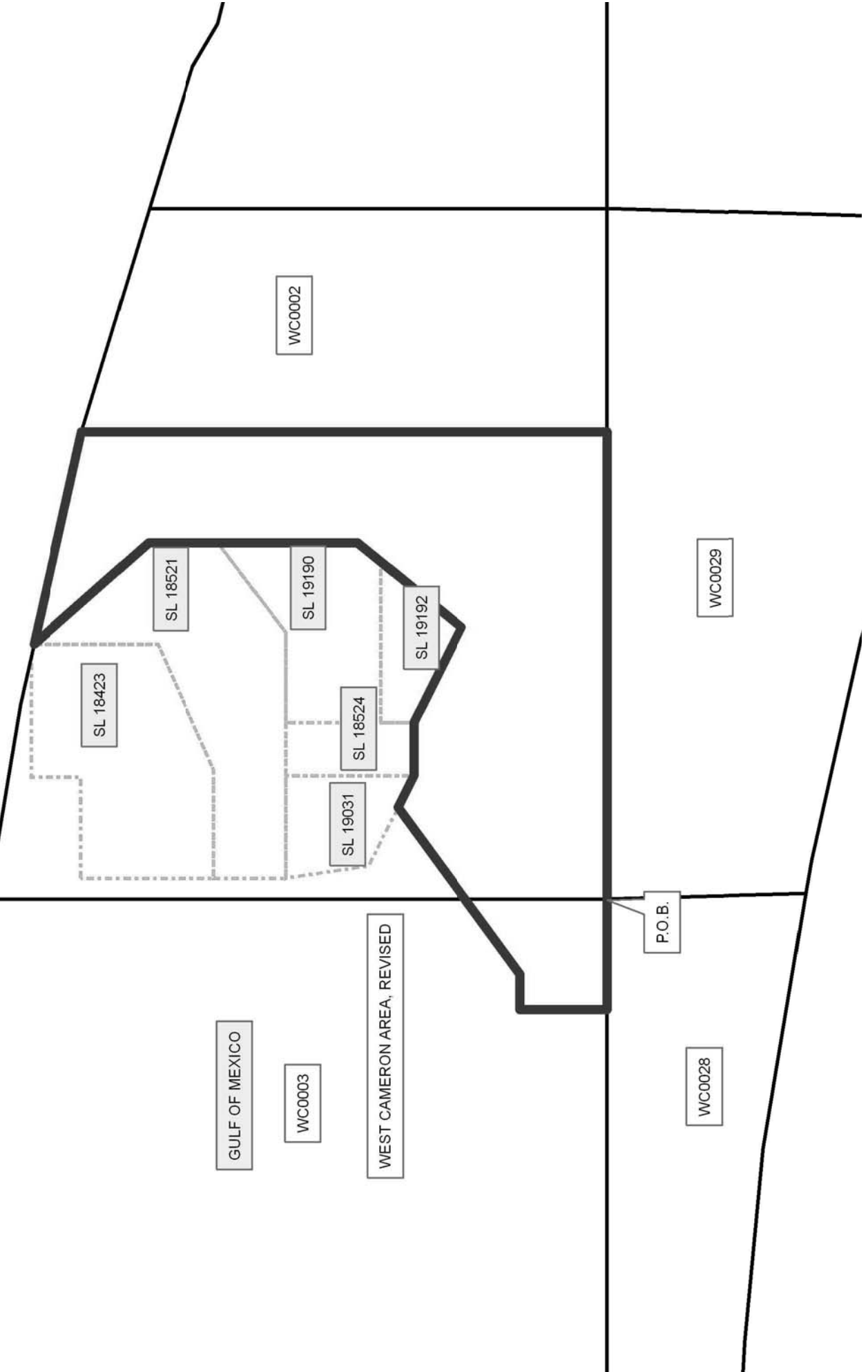
NOTE: The State of Louisiana does hereby reserve, and this lease shall be subject to, the imprescriptible right of surface use in the nature of a servitude in favor of the Department of Natural Resources, including its Offices and Commissions, for the sole purpose of implementing, constructing, servicing and maintaining approved coastal zone management and/or restoration projects. Utilization of any and all rights derived under this lease by the mineral lessee, its agents, successors or assigns, shall not interfere with nor hinder the reasonable surface use by the Department of Natural Resources, its Offices or Commissions, as herein above reserved.

Applicant: AUDUBON OIL AND GAS CORPORATION

Bidder	Cash Payment	Price/Acre	Rental	Oil	Gas	Other



CAMERON PARISH



TRACT 41333 - Cameron Parish, Louisiana

All lands, including lands added by accretion and reliction and lands now or formerly constituting the beds and bottoms of all water bodies of every nature and description, owned by and not presently under mineral lease as of March 10, 2010 from the State of Louisiana, situated in Cameron Parish, Louisiana, and being more fully described as follows: Beginning at the Southeast corner of Block 2, West Cameron Area, Revised having Coordinates of X = 1,421,416.19 and Y = 393,790.24; thence West 5,051.18 feet to a point along the South line of said Block 2, West Cameron Area, Revised, having Coordinates of X = 1,416,365.00 and Y = 393,790.24; thence North 11,909.76 feet to a point on the Louisiana Coastline, as decreed by the Supreme Court of the United States, as determined by a Special Master appointed therein, in litigation styled United States v. State of Louisiana et al No. 9 Original, in 1975, having Coordinates of X = 1,416,365.00 and Y = 405,700.00; thence Southeasterly on a straight line along said Louisiana Coastline, to the Northeast corner of said Block 2, West Cameron Area, Revised having Coordinates of X = 1,421,416.19 and Y = 404,156.84; thence South 10,366.60 feet along the East line of said Block 2, West Cameron Area, Revised, to the point of beginning, containing approximately **1,291.58 acres**, all as more particularly outlined on a plat on file in the Office of Mineral Resources, Department of Natural Resources. All bearings, distances and coordinates are based on Louisiana Coordinate System of 1927, (North or South Zone), where applicable.

NOTE: The above description of the Tract nominated for lease has been provided and corrected, where required, exclusively by the nomination party. Any mineral lease selected from this Tract and awarded by the Louisiana State Mineral Board shall be without warranty of any kind, either express, implied, or statutory, including, but not limited to, the implied warranties of merchantability and fitness for a particular purpose. Should the mineral lease awarded by the Louisiana State Mineral Board be subsequently modified, cancelled or abrogated due to the existence of conflicting leases, operating agreements, private claims or other future obligations or conditions which may affect all or any portion of the leased Tract, it shall not relieve the Lessee of the obligation to pay any bonus due thereon to the Louisiana State Mineral Board, nor shall the Louisiana State Mineral Board be obligated to refund any consideration paid by the Lessor prior to such modification, cancellation, or abrogation, including, but not limited to, bonuses, rentals and royalties.

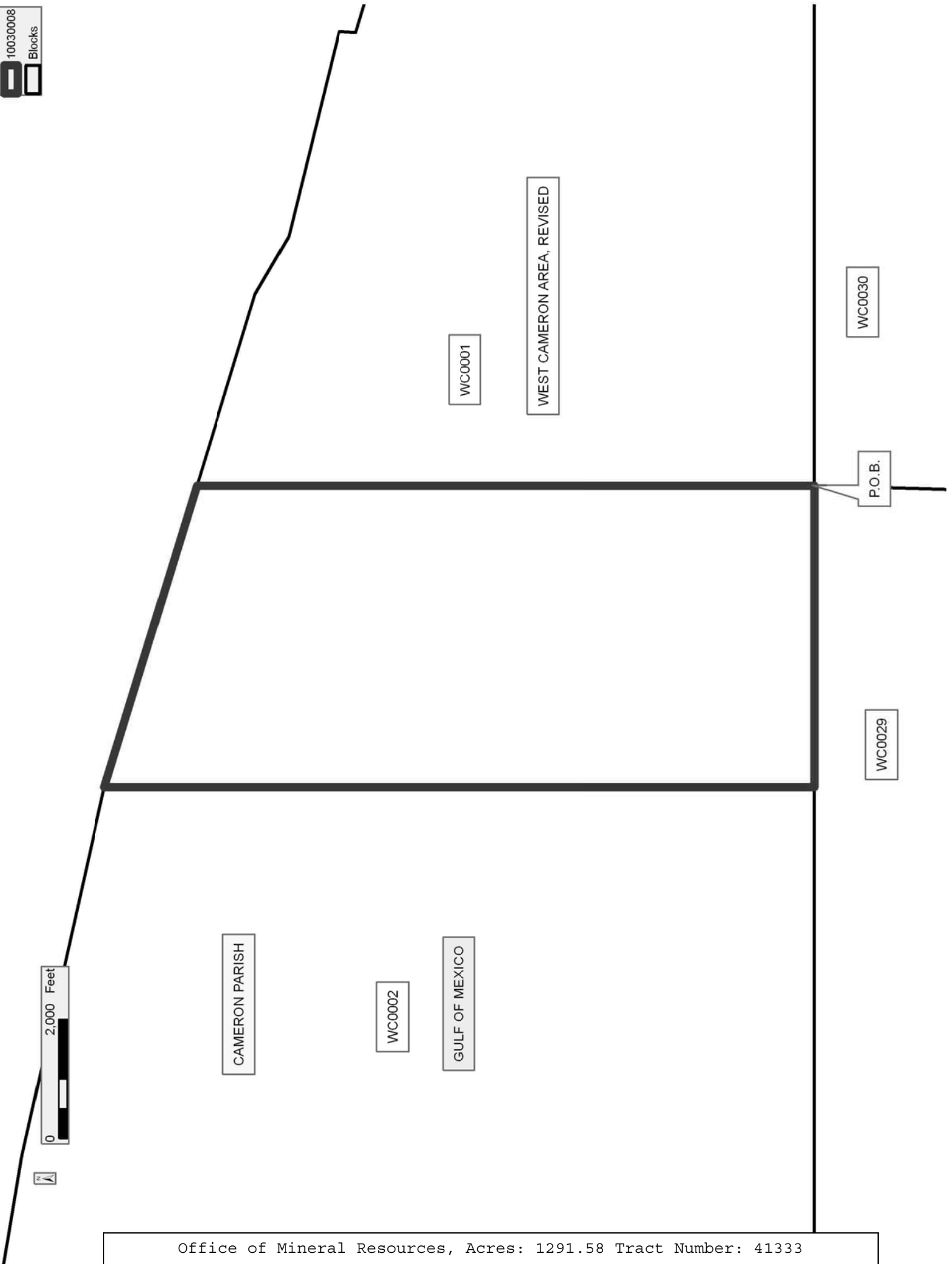
NOTE: The State of Louisiana does hereby reserve, and this lease shall be subject to, the imprescriptible right of surface use in the nature of a servitude in favor of the Department of Natural Resources, including its Offices and Commissions, for the sole purpose of implementing, constructing, servicing and maintaining approved coastal zone management and/or restoration projects. Utilization of any and all rights derived under this lease by the mineral lessee, its agents, successors or assigns, shall not interfere with nor hinder the reasonable surface use by the

Department of Natural Resources, its Offices or Commissions, as herein above reserved.

Applicant: AUDUBON OIL AND GAS CORPORATION

Bidder	Cash Payment	Price/Acre	Rental	Oil	Gas	Other

Legend
10030008
Blocks



TRACT 41334 - Cameron Parish, Louisiana

All lands, including lands added by accretion and reliction and lands now or formerly constituting the beds and bottoms of all water bodies of every nature and description, owned by and not presently under mineral lease as of March 10, 2010 from the State of Louisiana, situated in Cameron Parish, Louisiana, and being more fully described as follows: Beginning at a point on the West line of Block 30, West Cameron Area, Revised having Coordinates of X = 1,420,967.81 and Y = 391,948.00; thence North 1,842.24 feet along the said West line of Block 30 to its Northwest corner having Coordinates of X = 1,420,967.81 and Y = 393,790.24; thence East 448.38 feet along the North line of said Block 30 to the Southwest corner of Block 1, West Cameron Area, Revised having Coordinates of X = 1,421,416.19 and Y = 393,790.24; thence North 10,366.60 feet along the West line of said Block 1, West Cameron Area, Revised, to its Northwest corner, to a point on the Louisiana Coastline, as decreed by the Supreme Court of the United States, as determined by a Special Master appointed therein, in litigation styled United States v. State of Louisiana et al No. 9 Original, in 1975, having Coordinates of X = 1,421,416.19 and Y = 404,156.83; thence along the said Louisiana Coastline the following courses: Southeasterly on a straight line to a point having Coordinates of X = 1,424,630.00 and Y = 403,175.00, Southeasterly on a straight line to a point having Coordinates of X = 1,425,518.38 and Y = 402,657.54; thence South 8,867.30 feet to a point on the South line of said Block 1, West Cameron Area, Revised, also being the North line of said Block 30, West Cameron Area, Revised having Coordinates of X = 1,425,518.38 and Y = 393,790.24; thence South 1,842.24 feet to a point having Coordinates of X = 1,425,518.38 and Y = 391,948.00; thence West 4,550.57 feet to the point of beginning, containing approximately **1,107.19 acres**, all as more particularly outlined on a plat on file in the Office of Mineral Resources, Department of Natural Resources. All bearings, distances and coordinates are based on Louisiana Coordinate System of 1927, (North or South Zone), where applicable.

NOTE: The above description of the Tract nominated for lease has been provided and corrected, where required, exclusively by the nomination party. Any mineral lease selected from this Tract and awarded by the Louisiana State Mineral Board shall be without warranty of any kind, either express, implied, or statutory, including, but not limited to, the implied warranties of merchantability and fitness for a particular purpose. Should the mineral lease awarded by the Louisiana State Mineral Board be subsequently modified, cancelled or abrogated due to the existence of conflicting leases, operating agreements, private claims or other future obligations or conditions which may affect all or any portion of the leased Tract, it shall not relieve the Lessee of the obligation to pay any bonus due thereon to the Louisiana State Mineral Board, nor shall the Louisiana State Mineral Board be obligated to refund any consideration paid by the Lessor prior to such modification, cancellation, or abrogation, including, but not limited to, bonuses, rentals and royalties.

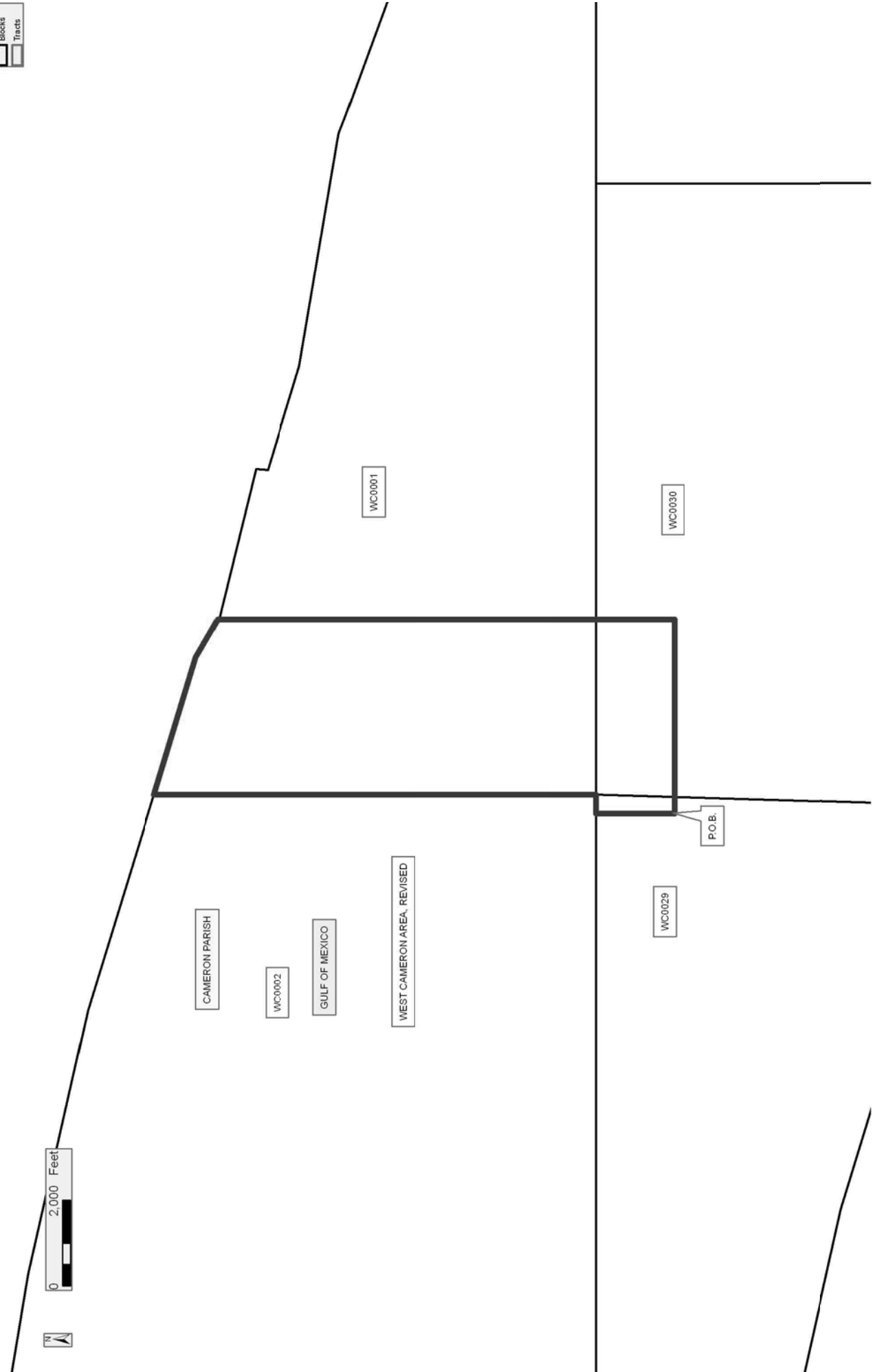
NOTE: The State of Louisiana does hereby reserve, and this lease shall be subject to, the imprescriptible right of surface use in the nature of a servitude in favor of the Department of Natural Resources, including its Offices and Commissions, for the sole purpose of implementing, constructing, servicing and maintaining approved coastal zone management and/or restoration projects. Utilization of any and all rights derived under this lease by the mineral lessee, its agents, successors or assigns, shall not interfere with nor hinder the reasonable surface use by the Department of Natural Resources, its Offices or Commissions, as herein above reserved.

Applicant: AUDUBON OIL AND GAS CORPORATION

Bidder	Cash Payment	Price/Acre	Rental	Oil	Gas	Other

Legend

- 10000009
- Blocks
- Tracts



TRACT 41335 - Cameron Parish, Louisiana

All lands, including lands added by accretion and reliction and lands now or formerly constituting the beds and bottoms of all water bodies of every nature and description, owned by and not presently under mineral lease as of March 10, 2010 from the State of Louisiana, situated in Cameron Parish, Louisiana, and being more fully described as follows: Beginning at a point on the East line of Block 30, West Cameron Area, Revised having Coordinates of X = 1,435,725.86 and Y = 391,948.00; thence West 10,207.48 feet to a point having Coordinates of X = 1,425,518.38 and Y = 391,948.00; thence North 1,842.24 feet to a point on the North line of Block 30, West Cameron Area, Revised, also being the South line of said Block 1 having Coordinates of X = 1,425,518.38 and Y = 393,790.24; thence North 8,867.30 feet to a point on the Louisiana Coastline, as decreed by the Supreme Court of the United States, as determined by a Special Master appointed therein, in litigation styled *United States v. State of Louisiana et al No. 9 Original*, in 1975, having Coordinates of X = 1,425,518.38 and Y = 402,657.54; thence along said Louisiana Coastline the following courses: Southeasterly on a straight line to a point having Coordinates of X = 1,425,600.00 and Y = 402,610.00, Southeasterly on a straight line to a point having Coordinates of X = 1,429,035.00 and Y = 401,760.00, Southwesterly on a straight line to a point having Coordinates of X = 1,429,020.00 and Y = 401,485.00, Southwesterly on a straight line to a point having Coordinates of X = 1,431,465.00 and Y = 400,740.00; Northeasterly on a straight line to a point having Coordinates of X = 1,431,526.00 and Y = 400,742.00, Southeasterly on a straight line to a point having Coordinates of X = 1,436,899.00 and Y = 399,820.00, Southeasterly on a straight line to a point on the Northernmost point of State Lease No. 19098 having Coordinates of X = 1,437,438.02 and Y = 399,623.71; thence along the boundary of said State Lease No. 19098 the following courses: South 17 degrees 31 minutes 32 seconds West 93.03 feet to a point having Coordinates of X = 1,437,410.00 and Y = 399,535.00, South 390.00 feet to a point having Coordinates of X = 1,437,410.00 and Y = 399,145.00, South 88 degrees 37 minutes 31 seconds East 368.73 feet to a point on the West boundary line of State Lease No. 12725, as amended, having Coordinates of X = 1,437,778.63 and Y = 399,136.15; thence South 01 degrees 54 minutes 33 seconds East 41.17 feet along the said West boundary of said State Lease No. 12725 to a point having Coordinates of X = 1,437,780.00 and Y = 399,095.00; thence South 14 degrees 02 minutes 10 seconds East 175.24 feet along the said West boundary of said State Lease No. 12725 to a point on the Northern boundary line of State Lease No. 18949 having Coordinates of X = 1,437,822.50 and Y = 398,925.00; thence West 2,096.64 feet along the said North boundary line of said State Lease No. 18949 to its Northernmost Northwest corner having Coordinates of X = 1,435,725.86 and Y = 398,925.00; thence South 5,134.76 feet along the Western boundary of said State Lease No. 18949 to a corner, said corner also being the Northeast corner of said Block 30, West Cameron Area, Revised having Coordinates of X = 1,435,725.86 and Y = 393,790.24; thence South 1,842.24 feet along the said East line of Block 30, West Cameron Area, Revised to the point of beginning, containing approximately **2,201.96**

acres, all as more particularly outlined on a plat on file in the Office of Mineral Resources, Department of Natural Resources. All bearings, distances and coordinates are based on Louisiana Coordinate System of 1927, (North or South Zone), where applicable.

NOTE: The above description of the Tract nominated for lease has been provided and corrected, where required, exclusively by the nomination party. Any mineral lease selected from this Tract and awarded by the Louisiana State Mineral Board shall be without warranty of any kind, either express, implied, or statutory, including, but not limited to, the implied warranties of merchantability and fitness for a particular purpose. Should the mineral lease awarded by the Louisiana State Mineral Board be subsequently modified, cancelled or abrogated due to the existence of conflicting leases, operating agreements, private claims or other future obligations or conditions which may affect all or any portion of the leased Tract, it shall not relieve the Lessee of the obligation to pay any bonus due thereon to the Louisiana State Mineral Board, nor shall the Louisiana State Mineral Board be obligated to refund any consideration paid by the Lessor prior to such modification, cancellation, or abrogation, including, but not limited to, bonuses, rentals and royalties.

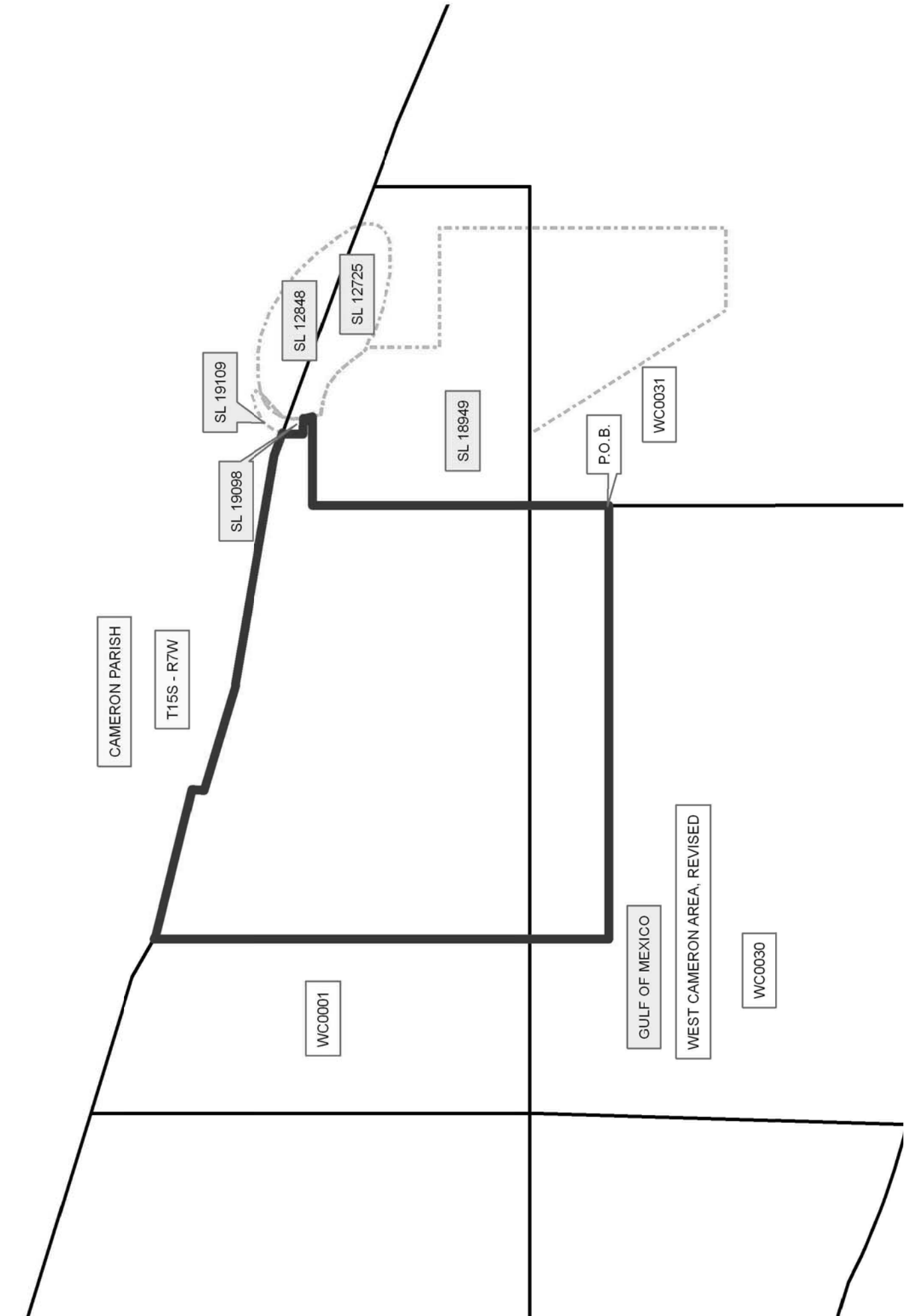
NOTE: The State of Louisiana does hereby reserve, and this lease shall be subject to, the imprescriptible right of surface use in the nature of a servitude in favor of the Department of Natural Resources, including its Offices and Commissions, for the sole purpose of implementing, constructing, servicing and maintaining approved coastal zone management and/or restoration projects. Utilization of any and all rights derived under this lease by the mineral lessee, its agents, successors or assigns, shall not interfere with nor hinder the reasonable surface use by the Department of Natural Resources, its Offices or Commissions, as herein above reserved.

Applicant: AUDUBON OIL AND GAS CORPORATION

Bidder	Cash Payment	Price/Acre	Rental	Oil	Gas	Other

Legend

- 10030010
- Blocks
- Active_Leases



TRACT 41336 - Cameron Parish, Louisiana

All lands, including lands added by accretion and reliction and lands now or formerly constituting the beds and bottoms of all water bodies of every nature and description, owned by and not presently under mineral lease as of March 10, 2010 from the State of Louisiana, situated in Cameron Parish, Louisiana, and being more fully described as follows: Beginning at the Northeast corner of State Lease No. 18447 having Coordinates of X = 1,445,480.00 and Y = 389,188.00; thence West 3,208.00 feet along the North boundary of said State Lease 18447 to the Southeast corner of State Lease No. 18949 having Coordinates of X = 1,442,272.00 and Y = 389,188.00; thence along the boundary of said State Lease No. 18949 the following courses: North 4,602.24 feet along the East line of said State Lease No. 18949 also being a point intersecting the North line of Block 31, West Cameron Area, Revised, and the South line of Block 1, West Cameron Area, Revised having Coordinates of X = 1,442,272.00 and Y = 393,790.24, North 2,130.76 feet to a point having Coordinates of X = 1,442,272.00 and Y = 395,921.00, West 2,815.00 feet to a point having Coordinates of X = 1,439,457.00 and Y = 395,921.00, North 1,747.58 feet to a point on the South boundary of State Lease No. 12725, as amended, having Coordinates of X = 1,439,457.00 and Y = 397,668.58; thence along said boundary of State Lease No. 12725 the following courses: South 69 degrees 01 minutes 35 seconds East 233.47 feet to a point having Coordinates of X = 1,439,675.00 and Y = 397,585.01, South 30 degrees 27 minutes 56 seconds East 98.62 feet to a point having Coordinates of X = 1,439,725.01 and Y = 397,500.00, South 71 degrees 12 minutes 54 seconds East 776.35 feet to a point having Coordinates of X = 1,440,460.00 and Y = 397,250.00, South 77 degrees 55 minutes 56 seconds East 741.38 feet to a point having Coordinates of X = 1,441,185.00 and Y = 397,095.01, East 700.00 feet to a point having Coordinates of X = 1,441,885.00 and Y = 397,095.01, North 74 degrees 14 minutes 56 seconds East 202.61 feet to a point having Coordinates of X = 1,442,080.00 and Y = 397,150.01, North 51 degrees 06 minutes 56 seconds East 199.12 feet to a point having Coordinates of X = 1,442,235.00 and Y = 397,275.00, North 33 degrees 18 minutes 38 seconds East 209.40 feet to a point having Coordinates of X = 1,442,350.00 and Y = 397,450.00, North 03 degrees 21 minutes 59 seconds East 255.44 feet to a point having Coordinates of X = 1,442,365.00 and Y = 397,705.00, North 18 degrees 26 minutes 06 seconds West 135.81 feet to a point on the Louisiana Coastline, as decreed by the Supreme Court of the United States, as determined by a Special Master appointed therein, in litigation styled United States v. State of Louisiana et al No. 9 Original, in 1975, having Coordinates of X = 1,442,322.05 and Y = 397,833.84; thence along said Louisiana Coastline the following courses: Southeasterly on a straight line to the Northeast corner of said Block 31, West Cameron Area, Revised having Coordinates of X = 1,443,236.19 and Y = 397,488.56, Southeasterly on a straight line to a point having Coordinates of X = 1,444,715.00 and Y = 396,930.00, Southeasterly on a straight line to a point having Coordinates of X = 1,445,480.00 and Y = 396,603.19; thence South 7,415.19 feet to the point of beginning, containing approximately **678.12 acres**, all as more particularly outlined on a plat on file in the Office of Mineral

Resources, Department of Natural Resources. All bearings, distances and coordinates are based on Louisiana Coordinate System of 1927, (North or South Zone), where applicable.

NOTE: The above description of the Tract nominated for lease has been provided and corrected, where required, exclusively by the nomination party. Any mineral lease selected from this Tract and awarded by the Louisiana State Mineral Board shall be without warranty of any kind, either express, implied, or statutory, including, but not limited to, the implied warranties of merchantability and fitness for a particular purpose. Should the mineral lease awarded by the Louisiana State Mineral Board be subsequently modified, cancelled or abrogated due to the existence of conflicting leases, operating agreements, private claims or other future obligations or conditions which may affect all or any portion of the leased Tract, it shall not relieve the Lessee of the obligation to pay any bonus due thereon to the Louisiana State Mineral Board, nor shall the Louisiana State Mineral Board be obligated to refund any consideration paid by the Lessor prior to such modification, cancellation, or abrogation, including, but not limited to, bonuses, rentals and royalties.

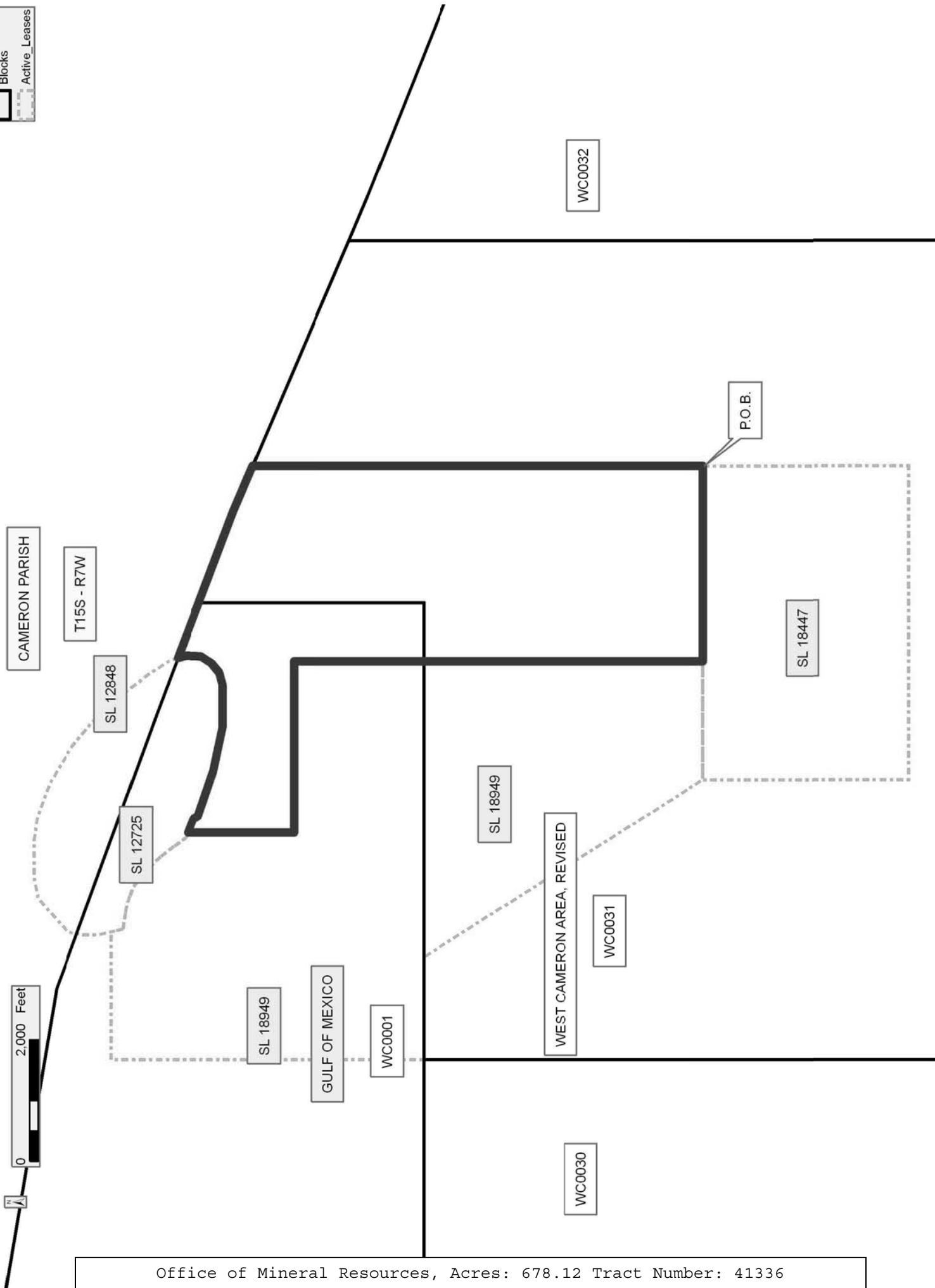
NOTE: The State of Louisiana does hereby reserve, and this lease shall be subject to, the imprescriptible right of surface use in the nature of a servitude in favor of the Department of Natural Resources, including its Offices and Commissions, for the sole purpose of implementing, constructing, servicing and maintaining approved coastal zone management and/or restoration projects. Utilization of any and all rights derived under this lease by the mineral lessee, its agents, successors or assigns, shall not interfere with nor hinder the reasonable surface use by the Department of Natural Resources, its Offices or Commissions, as herein above reserved.

Applicant: AUDUBON OIL AND GAS CORPORATION

Bidder	Cash Payment	Price/Acre	Rental	Oil	Gas	Other

Legend

- 10030013
- Blocks
- Active_Leases



TRACT 41337 - Cameron Parish, Louisiana

All lands, including lands added by accretion and reliction and lands now or formerly constituting the beds and bottoms of all water bodies of every nature and description, owned by and not presently under mineral lease as of March 10, 2010 from the State of Louisiana, situated in Cameron Parish, Louisiana, and being more fully described as follows: Beginning at a point on the Northeast corner of State Lease No. 18447 having Coordinates of X = 1,445,480.00 and Y = 389,188.00; thence North 7,415.19 feet to a point on the Louisiana Coastline, as decreed by the Supreme Court of the United States, as determined by a Special Master appointed therein, in litigation styled United States v. State of Louisiana et al No. 9 Original, in 1975, having Coordinates of X = 1,445,480.00 and Y = 396,603.19; thence along said Louisiana Coastline the following courses: Southeasterly on a straight line to the Northeast corner of Block 31, West Cameron Area, Revised, also being the Northwest corner of Block 32, West Cameron Area, Revised having Coordinates of X = 1,449,191.95 and Y = 395,017.43, Southeasterly on a straight line to a point having Coordinates of X = 1,449,935.00 and Y = 394,700.00, Southeasterly on a straight line to a point having Coordinates of X = 1,451,105.00 and Y = 393,050.00, Southeasterly on a straight line to a point having Coordinates of X = 1,456,023.27 and Y = 392,106.41; thence South 9,071.41 feet to a point having Coordinates of X = 1,456,023.27 and Y = 383,035.00; thence West 6,831.33 feet to a point on the West line of said Block 32, West Cameron Area, Revised, also being the East line of said Block 31, West Cameron Area, Revised, having Coordinates of X = 1,449,191.95 and Y = 383,035.00; thence North 2,782.19 feet along the said East line of Block 31, West Cameron Area, Revised, having Coordinates of X = 1,449,191.95 and Y = 385,817.19; thence West 3,711.95 feet to the Southeast corner of said State Lease No. 18447 having Coordinates of X = 1,445,480.00 and Y = 385,817.19; thence North 3,370.81 feet along the East line of said State Lease No. 18447 to the point of beginning, containing approximately **2,421.91 acres**, all as more particularly outlined on a plat on file in the Office of Mineral Resources, Department of Natural Resources. All bearings, distances and coordinates are based on Louisiana Coordinate System of 1927, (North or South Zone), where applicable.

NOTE: The above description of the Tract nominated for lease has been provided and corrected, where required, exclusively by the nomination party. Any mineral lease selected from this Tract and awarded by the Louisiana State Mineral Board shall be without warranty of any kind, either express, implied, or statutory, including, but not limited to, the implied warranties of merchantability and fitness for a particular purpose. Should the mineral lease awarded by the Louisiana State Mineral Board be subsequently modified, cancelled or abrogated due to the existence of conflicting leases, operating agreements, private claims or other future obligations or conditions which may affect all or any portion of the leased Tract, it shall not relieve the Lessee of the obligation to pay any bonus due thereon to the Louisiana State Mineral Board, nor shall the Louisiana State Mineral Board be obligated to refund any consideration

paid by the Lessor prior to such modification, cancellation, or abrogation, including, but not limited to, bonuses, rentals and royalties.

NOTE: The State of Louisiana does hereby reserve, and this lease shall be subject to, the imprescriptible right of surface use in the nature of a servitude in favor of the Department of Natural Resources, including its Offices and Commissions, for the sole purpose of implementing, constructing, servicing and maintaining approved coastal zone management and/or restoration projects. Utilization of any and all rights derived under this lease by the mineral lessee, its agents, successors or assigns, shall not interfere with nor hinder the reasonable surface use by the Department of Natural Resources, its Offices or Commissions, as herein above reserved.

Applicant: AUDUBON OIL AND GAS CORPORATION

Bidder	Cash Payment	Price/Acre	Rental	Oil	Gas	Other

Legend

- 10030014
- Blocks
- Active_Leases

CAMERON PARISH

T15S - R7W

WC0032

0 2,000 Feet



WC0031

GULF OF MEXICO

WEST CAMERON AREA, REVISED

P.O.B.

SL 18447

TRACT 41338 - Portion of Blocks 30, 31, and 34, West Cameron Area, Revised, Cameron Parish, Louisiana

The beds and bottoms of all water bodies belonging to the State of Louisiana located in Blocks 30, 31, and 34, West Cameron Area, Revised, together with any present lands formed by accretion to the shoreline or islands formed therein, located in Cameron Parish, Louisiana, owned by and not presently under mineral lease as of March 10, 2010, from the State of Louisiana, the geographical area of which is more fully described as follows: Beginning at the Northwest corner of Block 31, West Cameron Area, Revised, also being the Northern most Southwest corner of State Lease No. 18949 having Coordinates of X = 1,435,725.86 and Y = 393,790.24; thence East 1,682.14 feet along the North line of Block 31, West Cameron Area, Revised also being the Southern boundary of said State Lease No. 18949 to a point having Coordinates of X = 1,437,408.00 and Y = 393,790.24; thence South 32 degrees 21 minutes 31 seconds East 5,448.27 feet along the said Southern boundary of State Lease No. 18949, to its Southernmost Southwest corner, also being the Northwest corner of State Lease No. 18447 having Coordinates of X = 1,440,324.00 and Y = 389,188.00; thence South 3,370.81 feet along the West boundary of said State Lease No. 18447 to its Southwest corner having Coordinates of X = 1,440,324.00 and Y = 385,817.19; thence South 6,785.00 feet to a point on the South line of said Block 31, West Cameron Area, Revised, also being the North line of Block 34, West Cameron Area, Revised, having Coordinates of X = 1,440,324.00 and Y = 379,032.19; thence South 61.92 feet to a point on the Three Mile Line, as decreed by the Supreme Court of the United States, as determined by a Special Master appointed therein, in litigation styled *United States v. State of Louisiana et al No. 9 Original*, in 1975, having Coordinates of X = 1,440,324.00 and Y = 378,970.27; thence along said three mile line the following courses: Northwesterly on a straight line to a point on the North line of Block 34, West Cameron Area, Revised, also being the South line of said Block 31, West Cameron Area, Revised, having Coordinates of X = 1,440,179.01 and Y = 379,032.19; Northwesterly on a straight line to a point having Coordinates of X = 1,437,906 and Y = 380,003; thence Northwesterly on a straight line to a point having Coordinates of X = 1,435,142 and Y = 381,048; thence Northwesterly on a straight line to a point having Coordinates of X = 1,431,147 and Y = 382,502; thence along on an arc having a radius of 18,240.60 feet and a center at X = 1,431,465 and Y = 400,740 to a point having Coordinates of X = 1,426,725.86 and Y = 383,125.31; thence North 2,906.88 feet to a point having Coordinates of X = 1,426,725.86 and Y = 386,032.19; thence East 9,000.00 feet to a point on the East line of said Block 30, West Cameron Area, Revised having Coordinates of X = 1,435,725.86 and Y = 386,032.19; thence North 7,758.06 feet along the said East line of Block 30, West Cameron Area, Revised to the point of beginning, containing approximately **2,104.13 acres, LESS AND EXCEPT** that portion thereof, if any, lying seaward of the line three nautical miles from the coast line of Louisiana, as said three mile line has been decreed by the Supreme Court of the United States, as determined by a Special Master appointed therein, in litigation styled **United States v. State of Louisiana et al No. 9**

Original, in 1975, all as more particularly outlined on a plat in the Office of Mineral Resources, Department of Natural Resources. All bearings, distances and coordinates are based on the Louisiana Coordinate System of 1927, (South Zone).

NOTE: The above description of the Tract nominated for lease has been provided and corrected, where required, exclusively by the nomination party. Any mineral lease selected from this Tract and awarded by the Louisiana State Mineral Board shall be without warranty of any kind, either express, implied, or statutory, including, but not limited to, the implied warranties of merchantability and fitness for a particular purpose. Should the mineral lease awarded by the Louisiana State Mineral Board be subsequently modified, cancelled or abrogated due to the existence of conflicting leases, operating agreements, private claims or other future obligations or conditions which may affect all or any portion of the leased Tract, it shall not relieve the Lessee of the obligation to pay any bonus due thereon to the Louisiana State Mineral Board, nor shall the Louisiana State Mineral Board be obligated to refund any consideration paid by the Lessor prior to such modification, cancellation, or abrogation, including, but not limited to, bonuses, rentals and royalties.

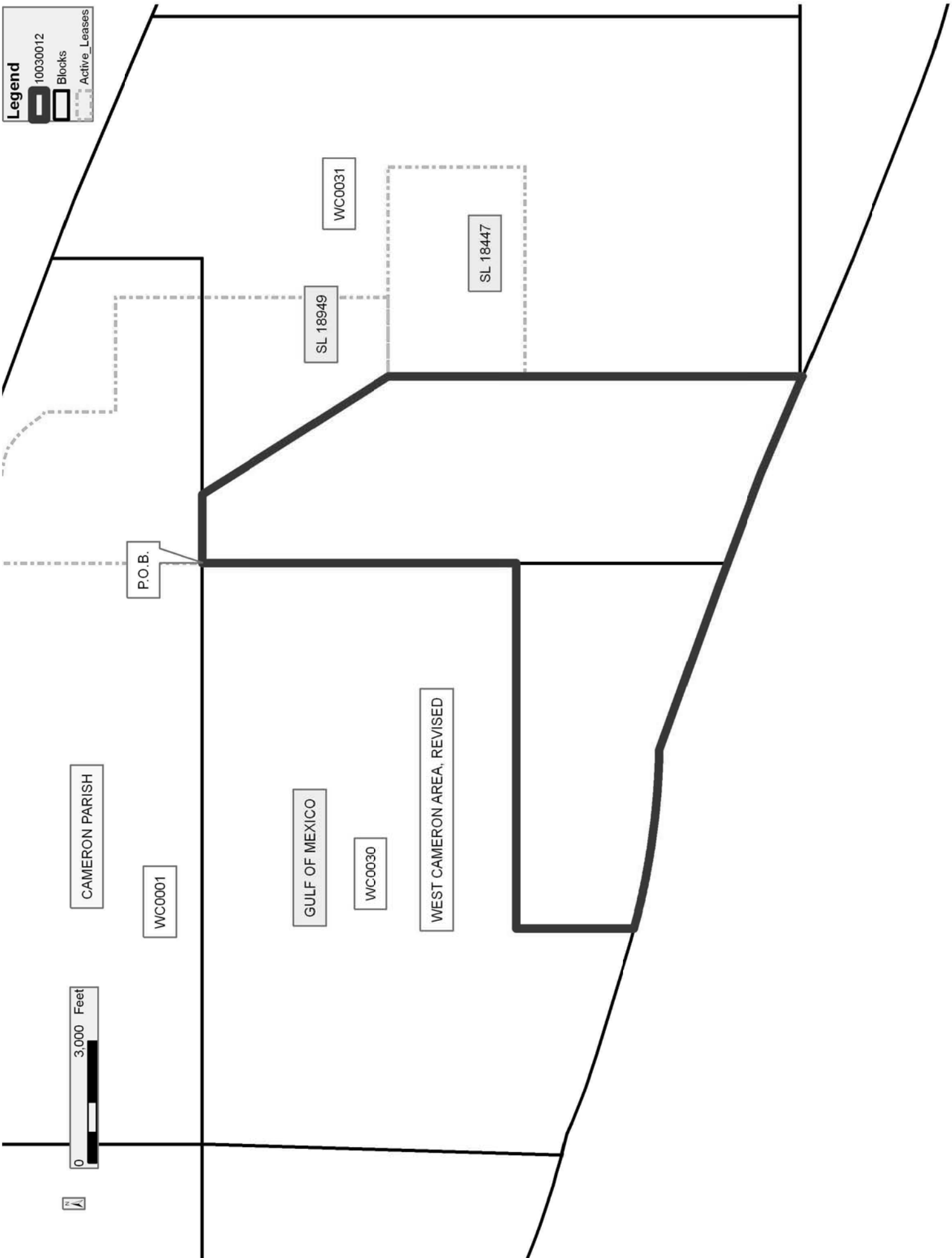
NOTE: The State of Louisiana does hereby reserve, and this lease shall be subject to, the imprescriptible right of surface use in the nature of a servitude in favor of the Department of Natural Resources, including its Offices and Commissions, for the sole purpose of implementing, constructing, servicing and maintaining approved coastal zone management and/or restoration projects. Utilization of any and all rights derived under this lease by the mineral lessee, its agents, successors or assigns, shall not interfere with nor hinder the reasonable surface use by the Department of Natural Resources, its Offices or Commissions, as herein above reserved.

Applicant: AUDUBON OIL AND GAS CORPORATION

Bidder	Cash Payment	Price/Acre	Rental	Oil	Gas	Other

Legend

- 10030012
- Blocks
- Active_Leases



TRACT 41339 - Portion of Block 29, West Cameron Area, Revised, Cameron Parish, Louisiana

The beds and bottoms of all water bodies belonging to the State of Louisiana located in Block 29, West Cameron Area, Revised, together with any present lands formed by accretion to the shoreline or islands formed therein, located in Cameron Parish, Louisiana, owned by and not presently under mineral lease as of March 10, 2010, from the State of Louisiana, the geographical area of which is more fully described as follows: Beginning at the Northwest corner of Block 29, West Cameron Area, Revised having Coordinates of X = 1,406,209.76 and Y = 393,790.24; thence East 14,758.05 feet along the North line of said Block 29, West Cameron Area, Revised to its Northeast corner having Coordinates of X = 1,420,967.81 and Y = 393,790.24; thence South 8,823.43 feet along the East line of said Block 29, West Cameron Area, Revised, to a point on the Three Mile Line, as decreed by the Supreme Court of the United States, as determined by a Special Master appointed therein, in litigation styled *United States v. State of Louisiana et al No. 9 Original*, in 1975, having Coordinates of X = 1,420,967.81 and Y = 384,966.81; thence along said three mile line the following courses: Along an arc having a radius of 18,240.60 feet and a center at X = 1,425,600 and Y = 402,610 to a point having Coordinates of X = 1,417,428 and Y = 386,302, Northwesterly on a straight line to a point having Coordinates of X = 1,411,695 and Y = 388,054, Northwesterly on a straight line to a point having Coordinates of X = 1,406,675 and Y = 389,181, Northwesterly on a straight line to a point on the West line of said Block 29, West Cameron Area, Revised having Coordinates of X = 1,406,209.76 and Y = 389,258.53; thence North 4,531.71 feet to the point of beginning, containing approximately **2,183.65 acres, LESS AND EXCEPT** that portion thereof, if any, lying seaward of the line three nautical miles from the coast line of Louisiana, as said three mile line has been decreed by the Supreme Court of the United States, as determined by a Special Master appointed therein, in litigation styled **United States v. State of Louisiana et al No. 9 Original**, in 1975, all as more particularly outlined on a plat in the Office of Mineral Resources, Department of Natural Resources. All bearings, distances and coordinates are based on the Louisiana Coordinate System of 1927, (South Zone).

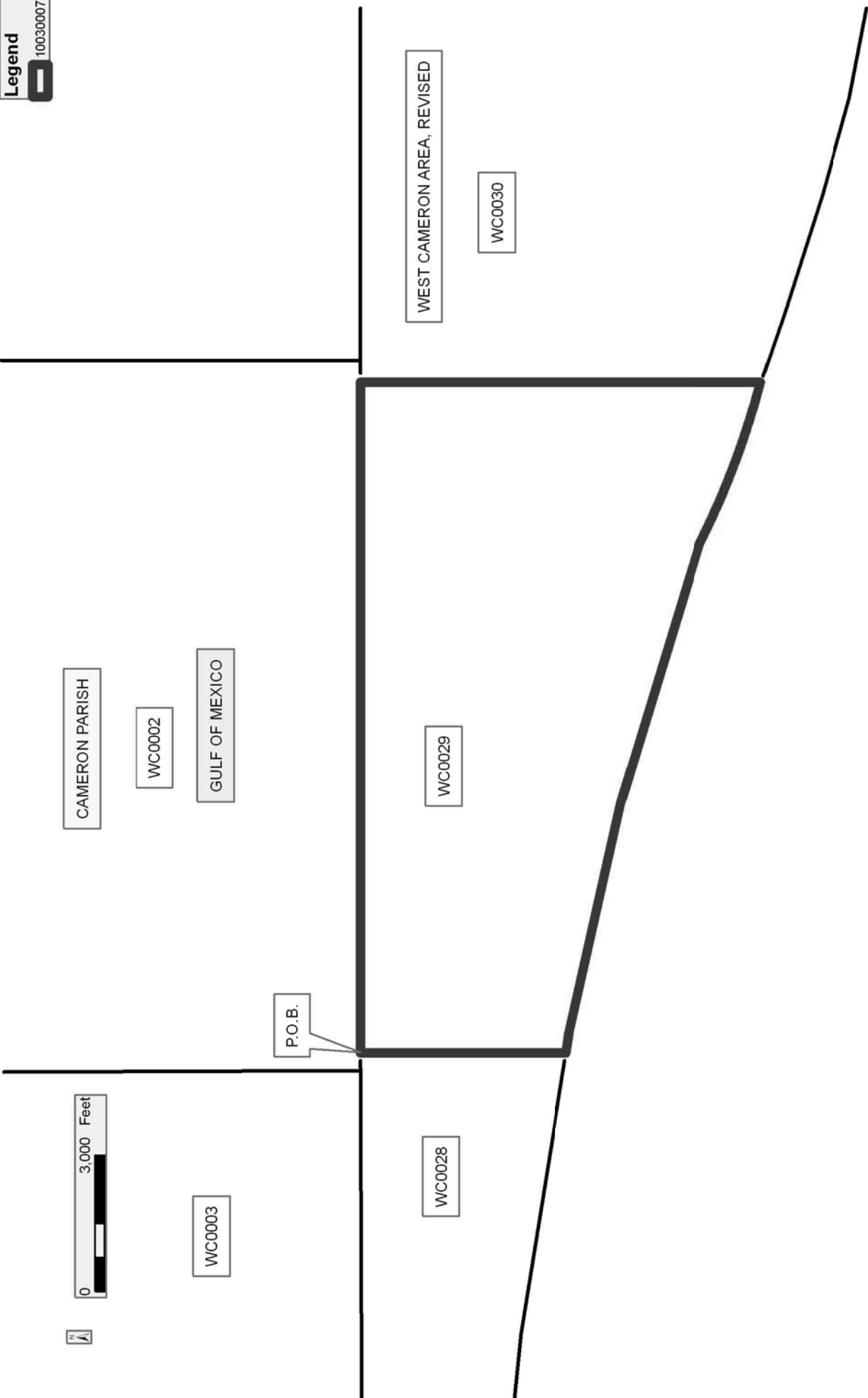
NOTE: The above description of the Tract nominated for lease has been provided and corrected, where required, exclusively by the nomination party. Any mineral lease selected from this Tract and awarded by the Louisiana State Mineral Board shall be without warranty of any kind, either express, implied, or statutory, including, but not limited to, the implied warranties of merchantability and fitness for a particular purpose. Should the mineral lease awarded by the Louisiana State Mineral Board be subsequently modified, cancelled or abrogated due to the existence of conflicting leases, operating agreements, private claims or other future obligations or conditions which may affect all or any portion of the leased Tract, it shall not relieve the Lessee of the obligation to pay any bonus due thereon to the Louisiana State Mineral Board, nor shall the Louisiana State Mineral Board be obligated to refund any consideration

paid by the Lessor prior to such modification, cancellation, or abrogation, including, but not limited to, bonuses, rentals and royalties.

NOTE: The State of Louisiana does hereby reserve, and this lease shall be subject to, the imprescriptible right of surface use in the nature of a servitude in favor of the Department of Natural Resources, including its Offices and Commissions, for the sole purpose of implementing, constructing, servicing and maintaining approved coastal zone management and/or restoration projects. Utilization of any and all rights derived under this lease by the mineral lessee, its agents, successors or assigns, shall not interfere with nor hinder the reasonable surface use by the Department of Natural Resources, its Offices or Commissions, as herein above reserved.

Applicant: AUDUBON OIL AND GAS CORPORATION

Bidder	Cash Payment	Price/Acre	Rental	Oil	Gas	Other



TRACT 41340 - Portion of Block 30, West Cameron Area, Revised, Cameron Parish, Louisiana

The beds and bottoms of all water bodies belonging to the State of Louisiana located in Block 30, West Cameron Area, Revised, together with any present lands formed by accretion to the shoreline or islands formed therein, located in Cameron Parish, Louisiana, owned by and not presently under mineral lease as of March 10, 2010, from the State of Louisiana, the geographical area of which is more fully described as follows: Beginning at a point on the East line of Block 30, West Cameron Area, Revised having Coordinates of X = 1,435,725.86 and Y = 391,948.00; thence South 5,915.82 feet along the said East line of Block 30, West Cameron Area, Revised to a point having Coordinates of X = 1,435,725.86 and Y = 386,032.19; thence West 9,000.00 feet to a point having Coordinates of X = 1,426,725.86 and Y = 386,032.19; thence South 2,906.88 feet to a point on the Three Mile Line, as decreed by the Supreme Court of the United States, as determined by a Special Master appointed therein, in litigation styled *United States v. State of Louisiana et al No. 9 Original*, in 1975, having Coordinates of X = 1,426,725.86 and Y = 383,125.31; thence along the said three mile line the following courses: Along on an arc having a radius of 18,240.60 feet and a center at X = 1,431,465 and Y = 400,740 to a point having Coordinates of X = 1,426,148 and Y = 383,291, Northwesterly on a straight line to a point having Coordinates of X = 1,423,703 and Y = 384,036, along on an arc having a radius of 18,240.60 feet and a center at X = 1,429,020 and Y = 401,485 to a point having Coordinates of X = 1,421,665 and Y = 384,793, Northwesterly on a straight line to a point having Coordinates of X = 1,421,218 and Y = 384,903, along on an arc having a radius of 18,240.60 feet and a center at X = 1,425,600 and Y = 402,610 to a point said point also being a point on the West line of said Block 30, West Cameron Area, Revised having Coordinates of X = 1,420,967.81 and Y = 384,966.81; thence North 6,981.19 feet along the said West line of Block 30, West Cameron Area, Revised to a point having Coordinates of X = 1,420,967.81 and Y = 391,948.00; thence East 14,758.05 feet to the point of beginning, containing approximately **2,269.93 acres, LESS AND EXCEPT** that portion thereof, if any, lying seaward of the line three nautical miles from the coast line of Louisiana, as said three mile line has been decreed by the Supreme Court of the United States, as determined by a Special Master appointed therein, in litigation styled **United States v. State of Louisiana et al No. 9 Original**, in 1975, all as more particularly outlined on a plat in the Office of Mineral Resources, Department of Natural Resources. All bearings, distances and coordinates are based on the Louisiana Coordinate System of 1927, (South Zone).

NOTE: The above description of the Tract nominated for lease has been provided and corrected, where required, exclusively by the nomination party. Any mineral lease selected from this Tract and awarded by the Louisiana State Mineral Board shall be without warranty of any kind, either express, implied, or statutory, including, but not limited to, the implied warranties of merchantability and fitness for a particular purpose. Should the mineral lease awarded by the Louisiana State Mineral

Board be subsequently modified, cancelled or abrogated due to the existence of conflicting leases, operating agreements, private claims or other future obligations or conditions which may affect all or any portion of the leased Tract, it shall not relieve the Lessee of the obligation to pay any bonus due thereon to the Louisiana State Mineral Board, nor shall the Louisiana State Mineral Board be obligated to refund any consideration paid by the Lessor prior to such modification, cancellation, or abrogation, including, but not limited to, bonuses, rentals and royalties.

NOTE: The State of Louisiana does hereby reserve, and this lease shall be subject to, the imprescriptible right of surface use in the nature of a servitude in favor of the Department of Natural Resources, including its Offices and Commissions, for the sole purpose of implementing, constructing, servicing and maintaining approved coastal zone management and/or restoration projects. Utilization of any and all rights derived under this lease by the mineral lessee, its agents, successors or assigns, shall not interfere with nor hinder the reasonable surface use by the Department of Natural Resources, its Offices or Commissions, as herein above reserved.

Applicant: AUDUBON OIL AND GAS CORPORATION

Bidder	Cash Payment	Price/Acre	Rental	Oil	Gas	Other

Legend
10030011

