

**TRACT 41399 - Vernon Parish, Louisiana**

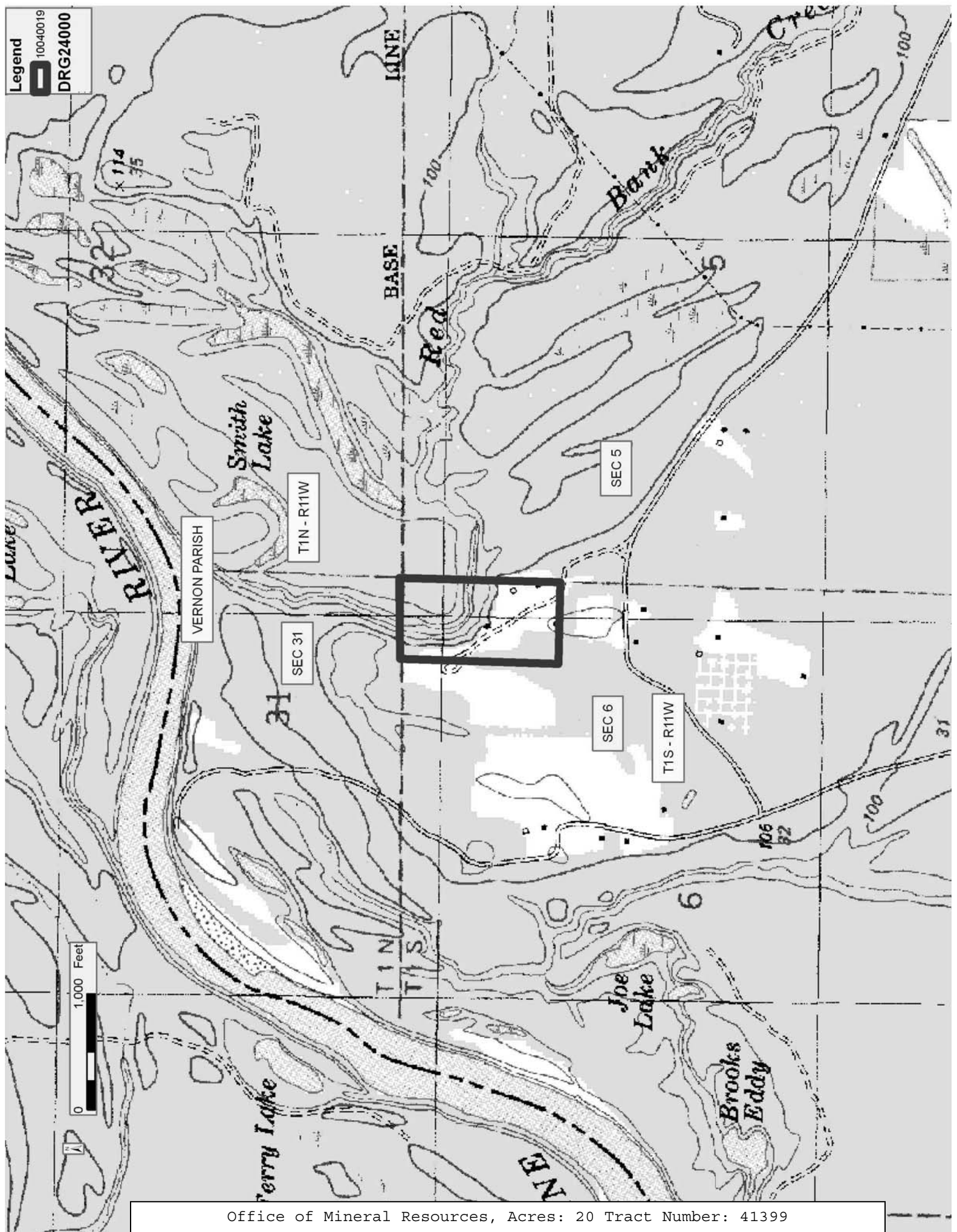
All of the mineral rights only under land adjudicated to and acquired by the State of Louisiana in and through a proper tax sale, and subsequently alienated by the State which retained the mineral rights thereto, and which is not under valid mineral lease from the State of Louisiana on April 14, 2010, situated in Vernon Parish, Louisiana, and being more fully described as follows: The East half (E/2) of the Northeast quarter (NE/4) of the Northeast quarter (NE/4) of Section 6, Township 1 South, Range 11 West, Vernon Parish, Louisiana, being the same land adjudicated to the State of Louisiana for unpaid taxes for the year 1930, in the name of A.L. Burleson Estate. Subsequently, the State of Louisiana granted Patent No. 13675, dated November 6, 1944 to Mark Jarrell, containing approximately **20 acres**, all as more particularly outlined on a plat on file in the Office of Mineral Resources, Department of Natural Resources. All bearings, distances and coordinates are based on Louisiana Coordinate System of 1927, (North or South Zone), where applicable.

NOTE: The above description of the Tract nominated for lease has been provided and corrected, where required, exclusively by the nomination party. Any mineral lease selected from this Tract and awarded by the Louisiana State Mineral Board shall be without warranty of any kind, either express, implied, or statutory, including, but not limited to, the implied warranties of merchantability and fitness for a particular purpose. Should the mineral lease awarded by the Louisiana State Mineral Board be subsequently modified, cancelled or abrogated due to the existence of conflicting leases, operating agreements, private claims or other future obligations or conditions which may affect all or any portion of the leased Tract, it shall not relieve the Lessee of the obligation to pay any bonus due thereon to the Louisiana State Mineral Board, nor shall the Louisiana State Mineral Board be obligated to refund any consideration paid by the Lessor prior to such modification, cancellation, or abrogation, including, but not limited to, bonuses, rentals and royalties.

NOTE: The State of Louisiana owns only the mineral rights on this tract; the surface and other rights of ownership have been sold or patented out by the State.

Applicant: HEMPCO ENERGY RESOURCES

Bidder	Cash Payment	Price/Acre	Rental	Oil	Gas	Other



**TRACT 41400 - Vernon Parish, Louisiana**

All of the mineral rights only under land adjudicated to and acquired by the State of Louisiana in and through a proper tax sale, and subsequently alienated by the State which retained the mineral rights thereto, and which is not under valid mineral lease from the State of Louisiana on April 14, 2010, situated in Vernon Parish, Louisiana, and being more fully described as follows: The Southeast quarter (SE/4) of the Northeast quarter (NE/4), and the Northeast quarter (NE/4) of the Southeast quarter (SE/4) of Section 7, Township 1 South, Range 11 West, Vernon Parish, Louisiana, being the same land adjudicated to the State of Louisiana for unpaid taxes for the year 1930, in the name of A.L. Burleson Estate. Subsequently, the State of Louisiana granted Patent No. 13570, dated July 5, 1944 to Lamar Evans, containing approximately **80 acres**, all as more particularly outlined on a plat on file in the Office of Mineral Resources, Department of Natural Resources. All bearings, distances and coordinates are based on Louisiana Coordinate System of 1927, (North or South Zone), where applicable.

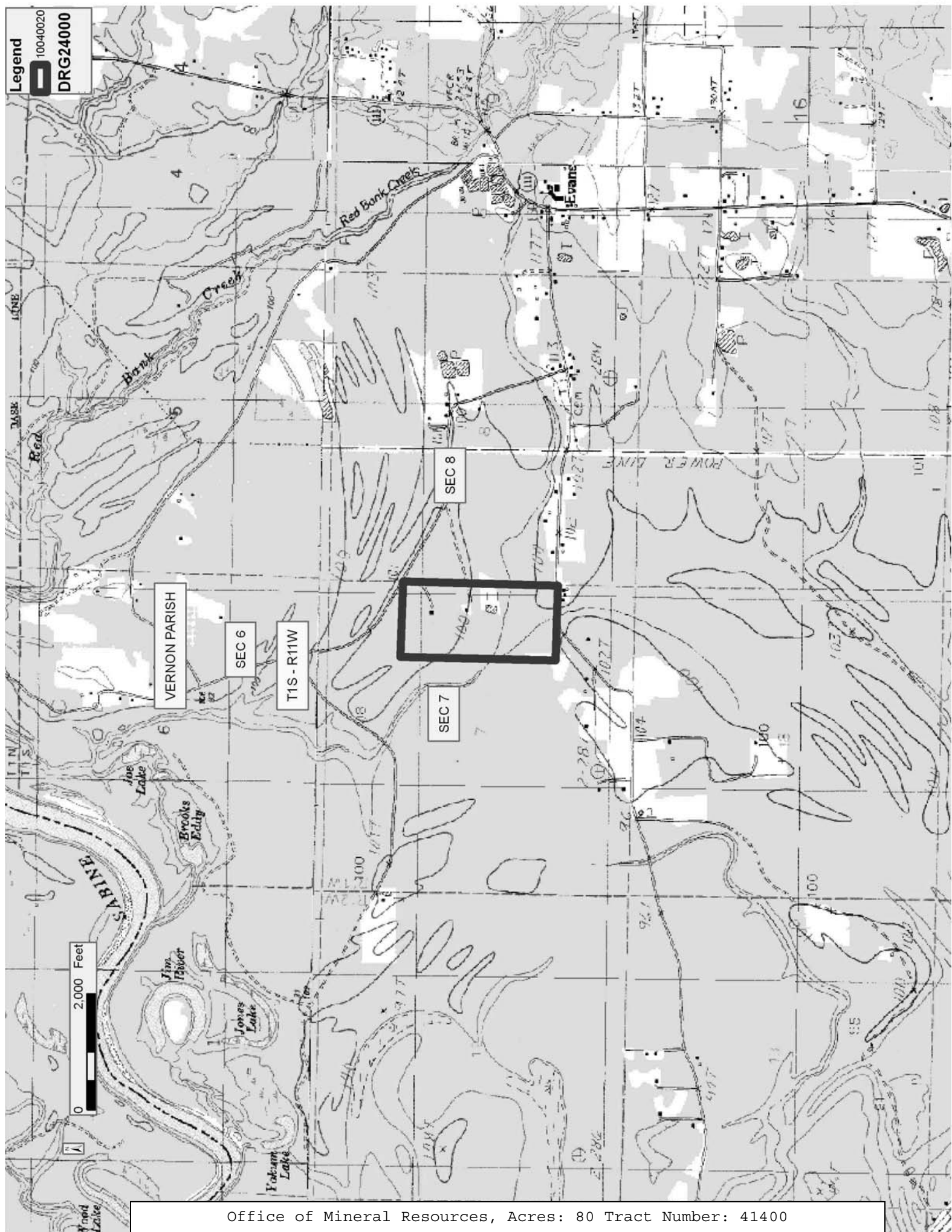
NOTE: The above description of the Tract nominated for lease has been provided and corrected, where required, exclusively by the nomination party. Any mineral lease selected from this Tract and awarded by the Louisiana State Mineral Board shall be without warranty of any kind, either express, implied, or statutory, including, but not limited to, the implied warranties of merchantability and fitness for a particular purpose. Should the mineral lease awarded by the Louisiana State Mineral Board be subsequently modified, cancelled or abrogated due to the existence of conflicting leases, operating agreements, private claims or other future obligations or conditions which may affect all or any portion of the leased Tract, it shall not relieve the Lessee of the obligation to pay any bonus due thereon to the Louisiana State Mineral Board, nor shall the Louisiana State Mineral Board be obligated to refund any consideration paid by the Lessor prior to such modification, cancellation, or abrogation, including, but not limited to, bonuses, rentals and royalties.

NOTE: The State of Louisiana owns only the mineral rights on this tract; the surface and other rights of ownership have been sold or patented out by the State.

Bidder	Cash Payment	Price/Acre	Rental	Oil	Gas	Other

Applicant: HEMPCO ENERGY RESOURCES

Legend  
10040020  
DRG24000



VERNON PARISH

SEC 6

T1S - R11W

SEC 7

SEC 8

**TRACT 41401 - Vernon Parish, Louisiana**

All of the mineral rights only under land adjudicated to and acquired by the State of Louisiana in and through a proper tax sale, and subsequently alienated by the State which retained the mineral rights thereto, and which is not under valid mineral lease from the State of Louisiana on April 14, 2010, situated in Vernon Parish, Louisiana, and being more fully described as follows: The West quarter (W/4) of the Southeast quarter (SE/4) of the Northwest quarter (NW/4) of Section 9, Township 1 South, Range 11 West, Vernon Parish, Louisiana, being the same land adjudicated to the State of Louisiana for unpaid taxes for the year 1931, in the name of Elmer Evans. Subsequently, the State of Louisiana granted Patent No. 14350, dated August 2, 1946 to Elmer Evans, containing approximately **10 acres**, all as more particularly outlined on a plat on file in the Office of Mineral Resources, Department of Natural Resources. All bearings, distances and coordinates are based on Louisiana Coordinate System of 1927, (North or South Zone), where applicable.

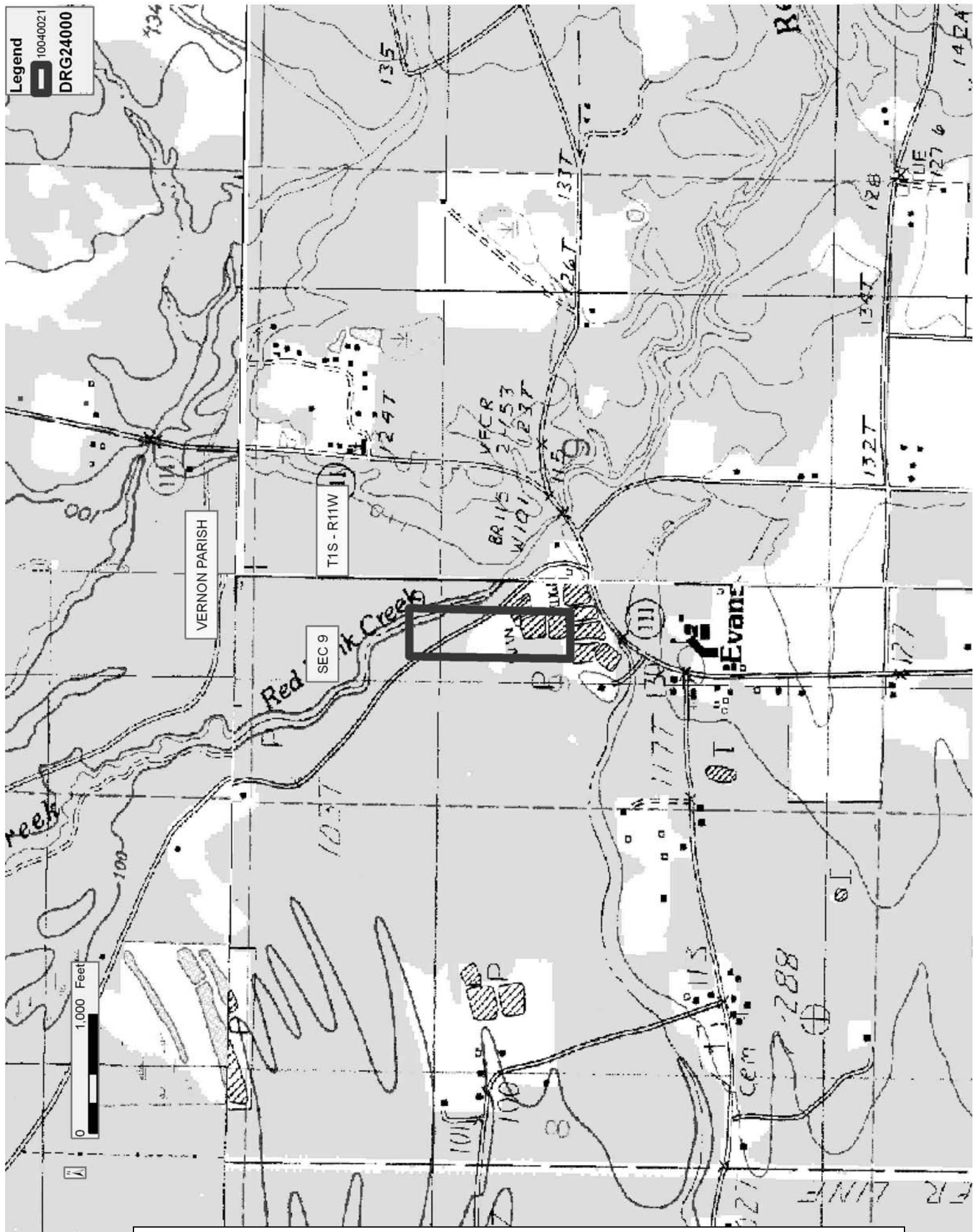
NOTE: The above description of the Tract nominated for lease has been provided and corrected, where required, exclusively by the nomination party. Any mineral lease selected from this Tract and awarded by the Louisiana State Mineral Board shall be without warranty of any kind, either express, implied, or statutory, including, but not limited to, the implied warranties of merchantability and fitness for a particular purpose. Should the mineral lease awarded by the Louisiana State Mineral Board be subsequently modified, cancelled or abrogated due to the existence of conflicting leases, operating agreements, private claims or other future obligations or conditions which may affect all or any portion of the leased Tract, it shall not relieve the Lessee of the obligation to pay any bonus due thereon to the Louisiana State Mineral Board, nor shall the Louisiana State Mineral Board be obligated to refund any consideration paid by the Lessor prior to such modification, cancellation, or abrogation, including, but not limited to, bonuses, rentals and royalties.

NOTE: The State of Louisiana owns only the mineral rights on this tract; the surface and other rights of ownership have been sold or patented out by the State.

Bidder	Cash Payment	Price/Acre	Rental	Oil	Gas	Other

Applicant: HEMPCO ENERGY RESOURCES

Legend  
10040021  
DRG24000





**TRACT 41402 - Vernon Parish, Louisiana**

All of the mineral rights only under land adjudicated to and acquired by the State of Louisiana in and through a proper tax sale, and subsequently alienated by the State which retained the mineral rights thereto, and which is not under valid mineral lease from the State of Louisiana on April 14, 2010, situated in Vernon Parish, Louisiana, and being more fully described as follows: Begin at the Southeast corner of the Southwest quarter (SW/4), Section 10, Township 1 South, Range 11 West, Vernon Parish, Louisiana, and run North 200 yards, West 290 yards, South 200 yards and East 290 yards to the point of beginning, being the same land adjudicated to the State of Louisiana for unpaid taxes for the year 1932, in the name of J.W. Jarrell. Subsequently, the State of Louisiana granted Patent No. 19025, dated August 26, 1959 to Mrs. Tabitha Jarrell Davis, containing approximately **12 acres**, all as more particularly outlined on a plat on file in the Office of Mineral Resources, Department of Natural Resources. All bearings, distances and coordinates are based on Louisiana Coordinate System of 1927, (North or South Zone), where applicable.

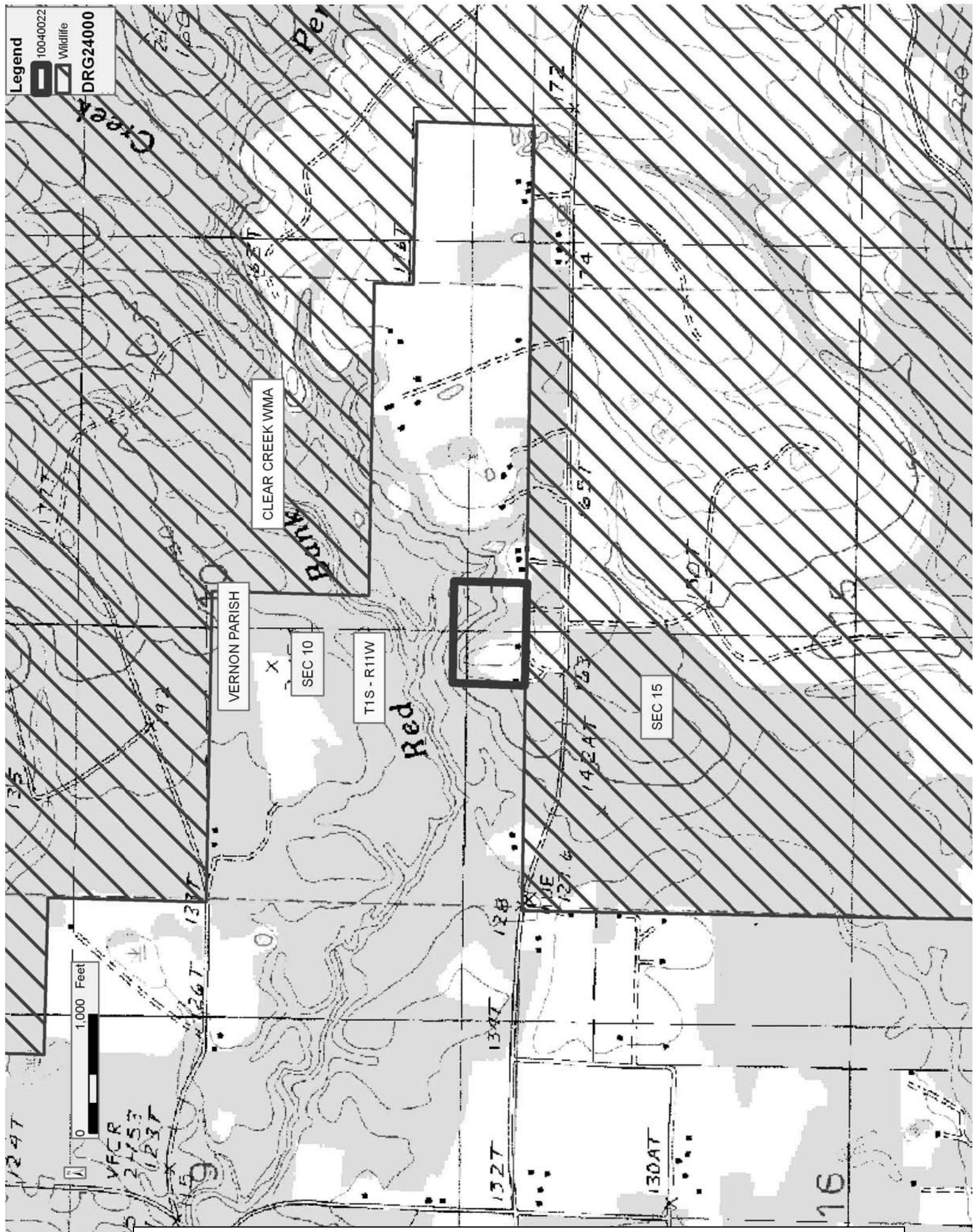
NOTE: The above description of the Tract nominated for lease has been provided and corrected, where required, exclusively by the nomination party. Any mineral lease selected from this Tract and awarded by the Louisiana State Mineral Board shall be without warranty of any kind, either express, implied, or statutory, including, but not limited to, the implied warranties of merchantability and fitness for a particular purpose. Should the mineral lease awarded by the Louisiana State Mineral Board be subsequently modified, cancelled or abrogated due to the existence of conflicting leases, operating agreements, private claims or other future obligations or conditions which may affect all or any portion of the leased Tract, it shall not relieve the Lessee of the obligation to pay any bonus due thereon to the Louisiana State Mineral Board, nor shall the Louisiana State Mineral Board be obligated to refund any consideration paid by the Lessor prior to such modification, cancellation, or abrogation, including, but not limited to, bonuses, rentals and royalties.

NOTE: The State of Louisiana owns only the mineral rights on this tract; the surface and other rights of ownership have been sold or patented out by the State.

Bidder	Cash Payment	Price/Acre	Rental	Oil	Gas	Other

Applicant: HEMPCO ENERGY RESOURCES

Legend  
 10040022  
 Wildlife  
 DRG24000



**TRACT 41403 - Vernon Parish, Louisiana**

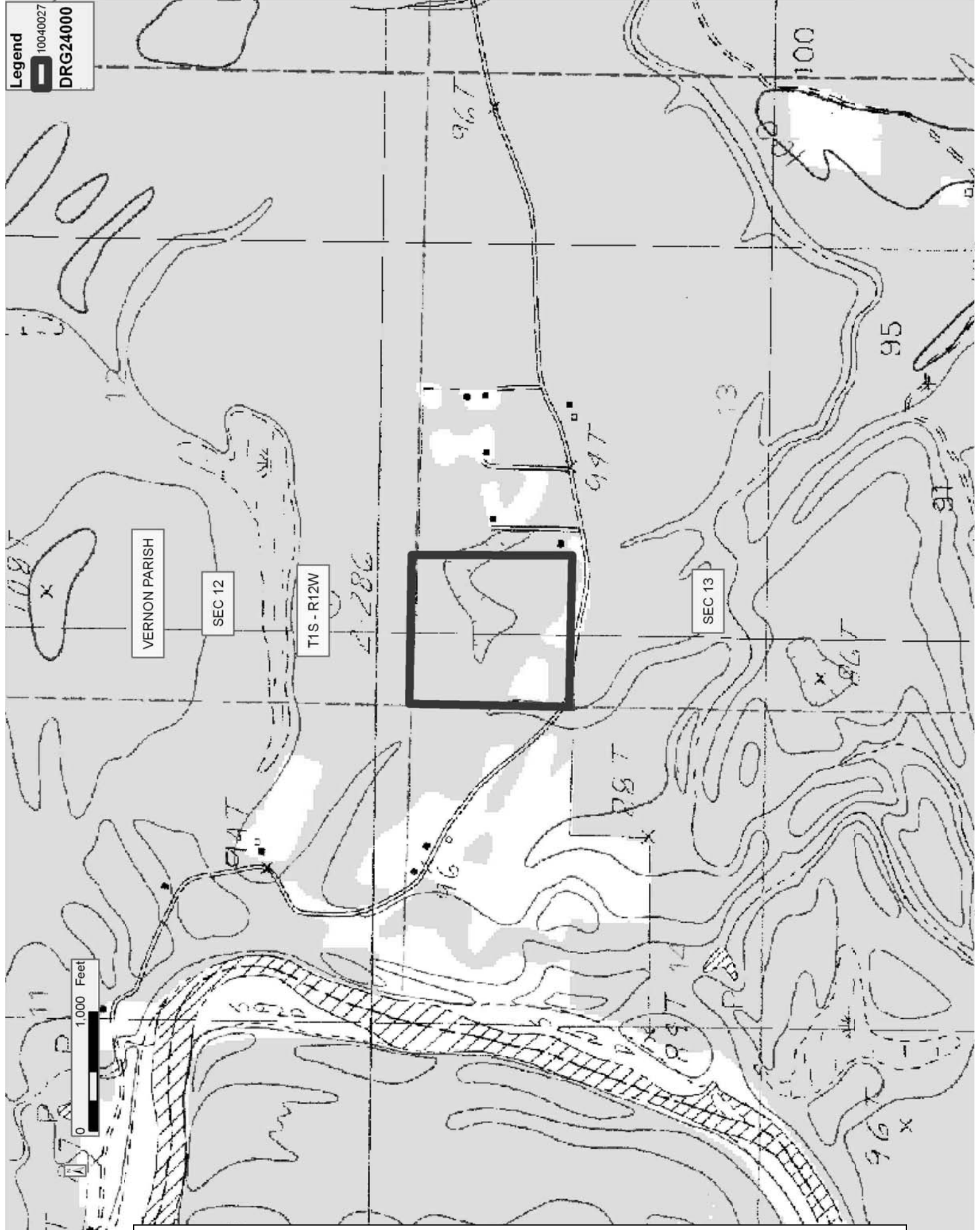
All of the mineral rights only under land adjudicated to and acquired by the State of Louisiana in and through a proper tax sale, and subsequently alienated by the State which retained the mineral rights thereto, and which is not under valid mineral lease from the State of Louisiana on April 14, 2010, situated in Vernon Parish, Louisiana, and being more fully described as follows: The Northwest quarter (NW/4) of the Northwest quarter (NW/4) of Section 13, Township 1 South, Range 12 West, Vernon Parish, Louisiana, being the same land adjudicated to the State of Louisiana for unpaid taxes for the year 1931, in the name of Mrs. J.E. Welch. Subsequently, the State of Louisiana granted Patent No. 15605, dated September 6, 1949 to L.N. Welch, containing approximately **40 acres**, all as more particularly outlined on a plat on file in the Office of Mineral Resources, Department of Natural Resources. All bearings, distances and coordinates are based on Louisiana Coordinate System of 1927, (North or South Zone), where applicable.

NOTE: The above description of the Tract nominated for lease has been provided and corrected, where required, exclusively by the nomination party. Any mineral lease selected from this Tract and awarded by the Louisiana State Mineral Board shall be without warranty of any kind, either express, implied, or statutory, including, but not limited to, the implied warranties of merchantability and fitness for a particular purpose. Should the mineral lease awarded by the Louisiana State Mineral Board be subsequently modified, cancelled or abrogated due to the existence of conflicting leases, operating agreements, private claims or other future obligations or conditions which may affect all or any portion of the leased Tract, it shall not relieve the Lessee of the obligation to pay any bonus due thereon to the Louisiana State Mineral Board, nor shall the Louisiana State Mineral Board be obligated to refund any consideration paid by the Lessor prior to such modification, cancellation, or abrogation, including, but not limited to, bonuses, rentals and royalties.

NOTE: The State of Louisiana owns only the mineral rights on this tract; the surface and other rights of ownership have been sold or patented out by the State.

Bidder	Cash Payment	Price/Acre	Rental	Oil	Gas	Other

Applicant: HEMPCO ENERGY RESOURCES



**TRACT 41404 - Vernon Parish, Louisiana**

All of the mineral rights only under land adjudicated to and acquired by the State of Louisiana in and through a proper tax sale, and subsequently alienated by the State which retained the mineral rights thereto, and which is not under valid mineral lease from the State of Louisiana on April 14, 2010, situated in Vernon Parish, Louisiana, and being more fully described as follows: The Southeast quarter (SE/4) of the Northwest quarter (NW/4) of the Southeast quarter (SE/4) of Section 14 in Township 1 South, Range 10 West, Vernon Parish, Louisiana, being the same land adjudicated to the State of Louisiana for unpaid taxes for the year 1931, in the name of Ponder L. Stevison. Subsequently, the State of Louisiana granted Patent No. 18816, dated February 27, 1958 to Ponder L. Stevison, containing approximately **10 acres**, all as more particularly outlined on a plat on file in the Office of Mineral Resources, Department of Natural Resources. All bearings, distances and coordinates are based on Louisiana Coordinate System of 1927, (North or South Zone), where applicable.

NOTE: The above description of the Tract nominated for lease has been provided and corrected, where required, exclusively by the nomination party. Any mineral lease selected from this Tract and awarded by the Louisiana State Mineral Board shall be without warranty of any kind, either express, implied, or statutory, including, but not limited to, the implied warranties of merchantability and fitness for a particular purpose. Should the mineral lease awarded by the Louisiana State Mineral Board be subsequently modified, cancelled or abrogated due to the existence of conflicting leases, operating agreements, private claims or other future obligations or conditions which may affect all or any portion of the leased Tract, it shall not relieve the Lessee of the obligation to pay any bonus due thereon to the Louisiana State Mineral Board, nor shall the Louisiana State Mineral Board be obligated to refund any consideration paid by the Lessor prior to such modification, cancellation, or abrogation, including, but not limited to, bonuses, rentals and royalties.

NOTE: The State of Louisiana owns only the mineral rights on this tract; the surface and other rights of ownership have been sold or patented out by the State.

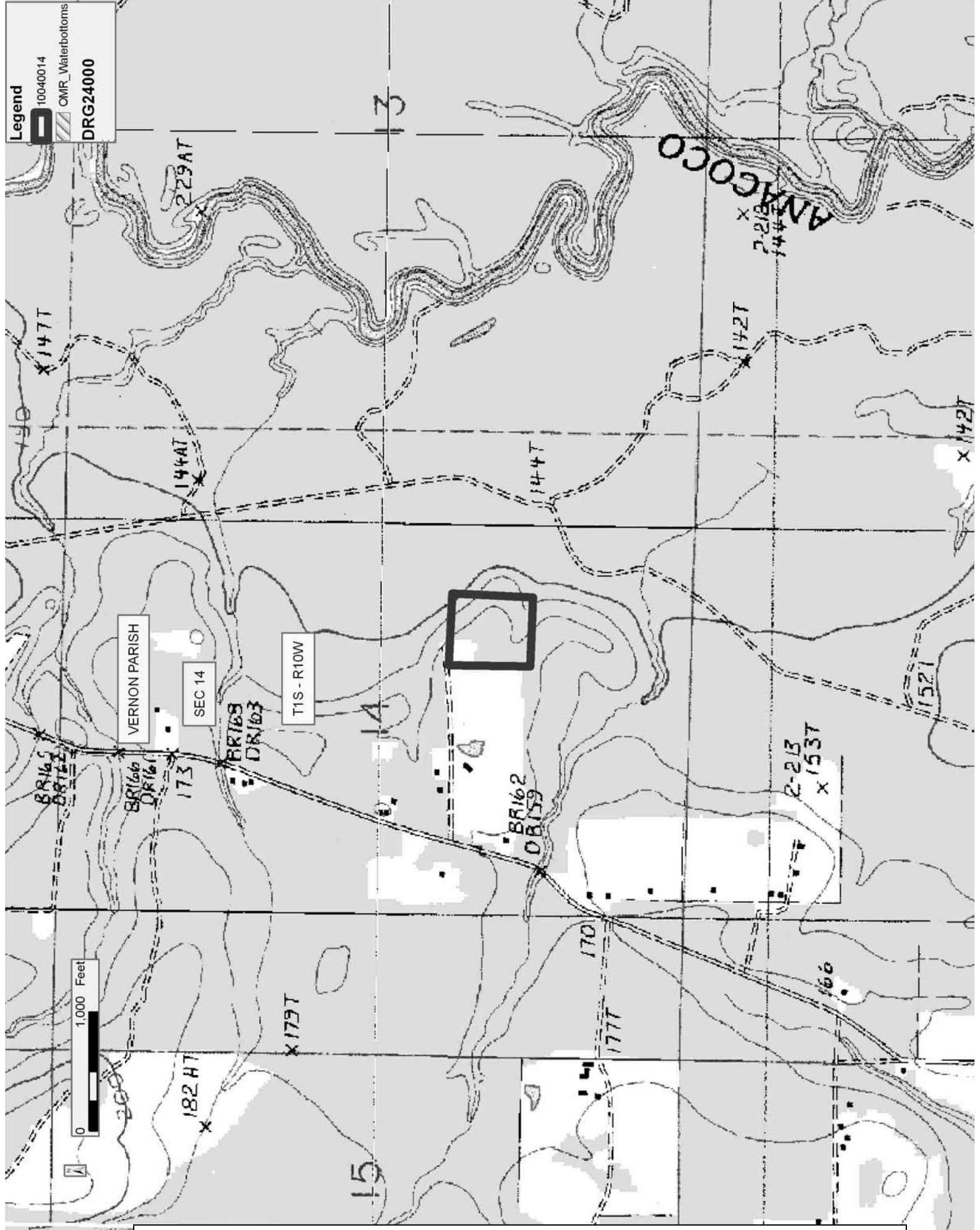
Bidder	Cash Payment	Price/Acre	Rental	Oil	Gas	Other

Applicant: HEMPCO ENERGY RESOURCES



**Legend**

- 10040014
- OMR\_Waterbottoms
- DRG24000



**TRACT 41405 - Vernon Parish, Louisiana**

All of the mineral rights only under land adjudicated to and acquired by the State of Louisiana in and through a proper tax sale, and subsequently alienated by the State which retained the mineral rights thereto, and which is not under valid mineral lease from the State of Louisiana on April 14, 2010, situated in Vernon Parish, Louisiana, and being more fully described as follows: The South half (S/2) of the Southwest quarter (SW/4) of the Southeast quarter (SE/4) of Section 16, Township 1 South, Range 11 West, Vernon Parish, Louisiana, being the same land adjudicated to the State of Louisiana for unpaid taxes for the year 1931, in the name of Mrs. W.L. Jones. Subsequently, the State of Louisiana granted Patent No. 14198, dated April 26, 1946 to Benjamin F. Simmons, containing approximately **20 acres**, all as more particularly outlined on a plat on file in the Office of Mineral Resources, Department of Natural Resources. All bearings, distances and coordinates are based on Louisiana Coordinate System of 1927, (North or South Zone), where applicable.

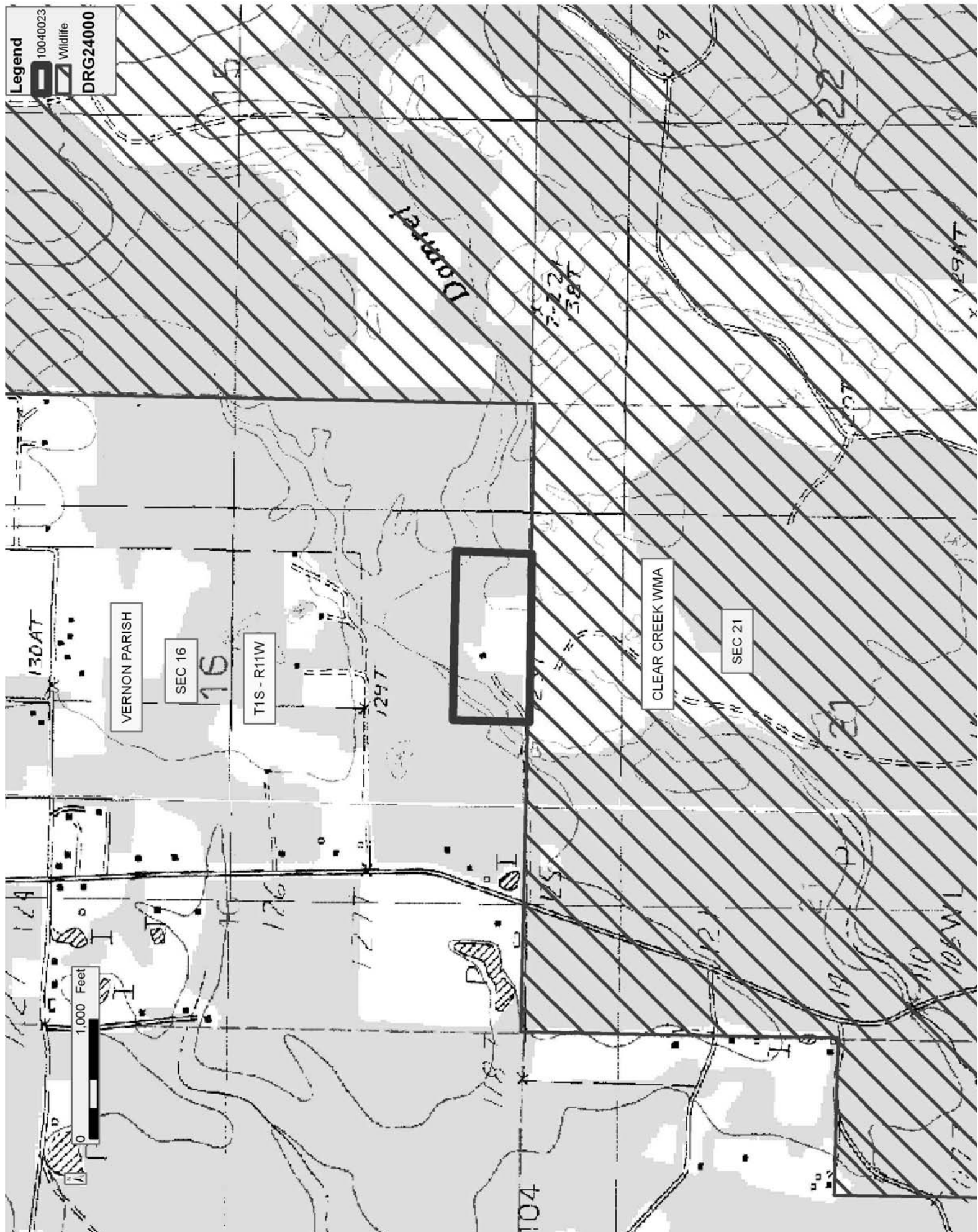
NOTE: The above description of the Tract nominated for lease has been provided and corrected, where required, exclusively by the nomination party. Any mineral lease selected from this Tract and awarded by the Louisiana State Mineral Board shall be without warranty of any kind, either express, implied, or statutory, including, but not limited to, the implied warranties of merchantability and fitness for a particular purpose. Should the mineral lease awarded by the Louisiana State Mineral Board be subsequently modified, cancelled or abrogated due to the existence of conflicting leases, operating agreements, private claims or other future obligations or conditions which may affect all or any portion of the leased Tract, it shall not relieve the Lessee of the obligation to pay any bonus due thereon to the Louisiana State Mineral Board, nor shall the Louisiana State Mineral Board be obligated to refund any consideration paid by the Lessor prior to such modification, cancellation, or abrogation, including, but not limited to, bonuses, rentals and royalties.

NOTE: The State of Louisiana owns only the mineral rights on this tract; the surface and other rights of ownership have been sold or patented out by the State.

Bidder	Cash Payment	Price/Acre	Rental	Oil	Gas	Other

Applicant: HEMPCO ENERGY RESOURCES

Legend  
10040023  
Wildlife  
DRG24000



**TRACT 41406 - Vernon Parish, Louisiana**

All of the mineral rights only under land adjudicated to and acquired by the State of Louisiana in and through a proper tax sale, and subsequently alienated by the State which retained the mineral rights thereto, and which is not under valid mineral lease from the State of Louisiana on April 14, 2010, situated in Vernon Parish, Louisiana, and being more fully described as follows: The West half (W/2) of the Northwest quarter (NW/4) of the Northeast quarter (NE/4) of Section 20, Township 1 South, Range 11 West, Vernon Parish, Louisiana, less 1 1/2 acre Right of Way, being the same land adjudicated to the State of Louisiana for unpaid taxes for the year 1930, in the name of W.J. Craft. Subsequently, the State of Louisiana granted Patent No. 13874, dated June 8, 1945 to T.K. Craft, containing approximately **18.5 acres**, all as more particularly outlined on a plat on file in the Office of Mineral Resources, Department of Natural Resources. All bearings, distances and coordinates are based on Louisiana Coordinate System of 1927, (North or South Zone), where applicable.

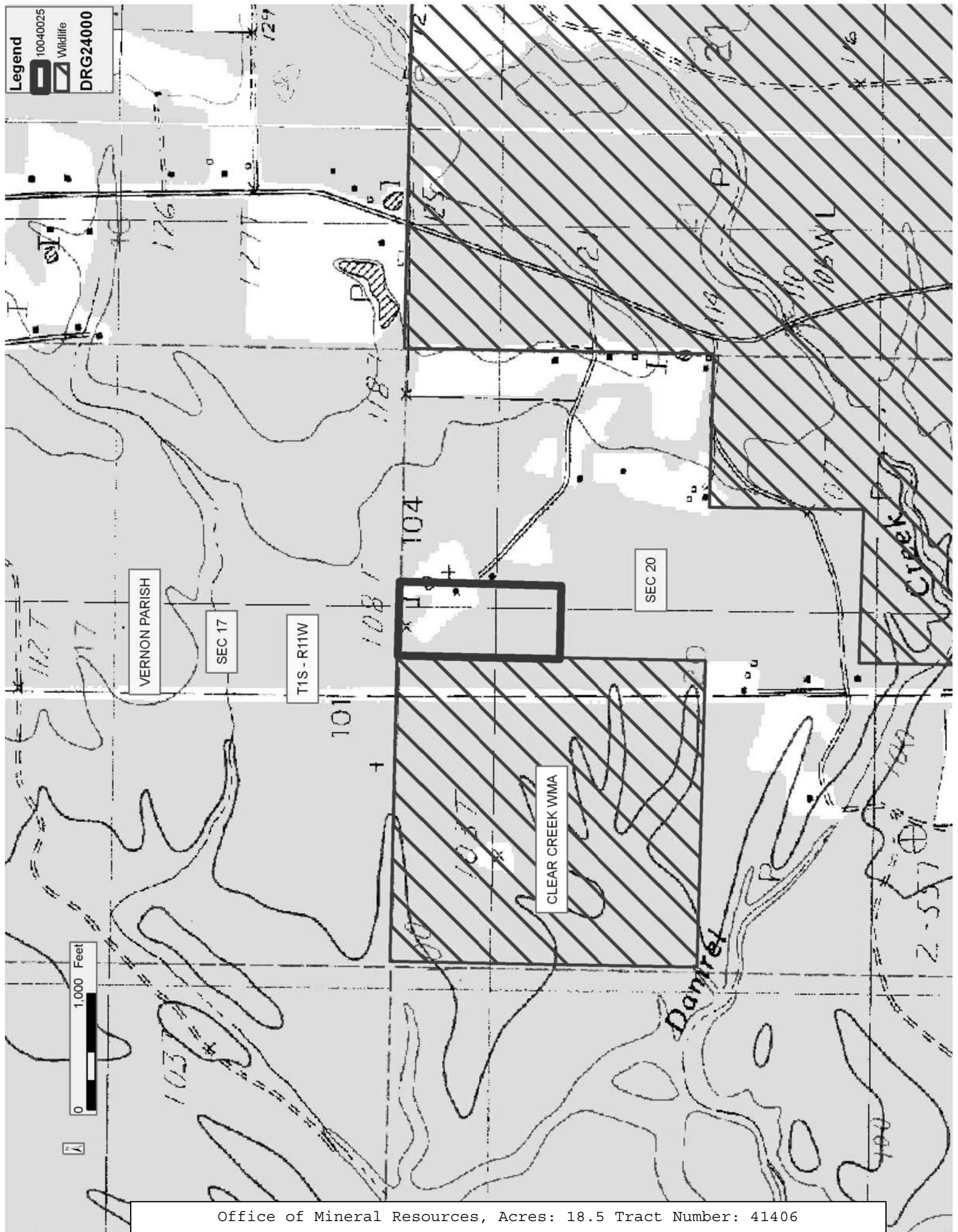
NOTE: The above description of the Tract nominated for lease has been provided and corrected, where required, exclusively by the nomination party. Any mineral lease selected from this Tract and awarded by the Louisiana State Mineral Board shall be without warranty of any kind, either express, implied, or statutory, including, but not limited to, the implied warranties of merchantability and fitness for a particular purpose. Should the mineral lease awarded by the Louisiana State Mineral Board be subsequently modified, cancelled or abrogated due to the existence of conflicting leases, operating agreements, private claims or other future obligations or conditions which may affect all or any portion of the leased Tract, it shall not relieve the Lessee of the obligation to pay any bonus due thereon to the Louisiana State Mineral Board, nor shall the Louisiana State Mineral Board be obligated to refund any consideration paid by the Lessor prior to such modification, cancellation, or abrogation, including, but not limited to, bonuses, rentals and royalties.

NOTE: The State of Louisiana owns only the mineral rights on this tract; the surface and other rights of ownership have been sold or patented out by the State.

Bidder	Cash Payment	Price/Acre	Rental	Oil	Gas	Other

Applicant: HEMPCO ENERGY RESOURCES

Legend  
 10040025  
 Wildlife  
 DRG24000



**TRACT 41407 - Vernon Parish, Louisiana**

All of the mineral rights only under land adjudicated to and acquired by the State of Louisiana in and through a proper tax sale, and subsequently alienated by the State which retained the mineral rights thereto, and which is not under valid mineral lease from the State of Louisiana on April 14, 2010, situated in Vernon Parish, Louisiana, and being more fully described as follows: The East half (E/2) of the Northeast quarter (NE/4) of the Southwest quarter (SW/4) of Section 19, Township 1 South, Range 11 West, Vernon Parish, Louisiana, being the same land adjudicated to the State of Louisiana for unpaid taxes for the year 1932, in the name of Copeland Chev. Co. Subsequently, the State of Louisiana granted Patent No. 14234, dated May 13, 1946 to W.M. Craft, containing approximately **20 acres**, all as more particularly outlined on a plat on file in the Office of Mineral Resources, Department of Natural Resources. All bearings, distances and coordinates are based on Louisiana Coordinate System of 1927, (North or South Zone), where applicable.

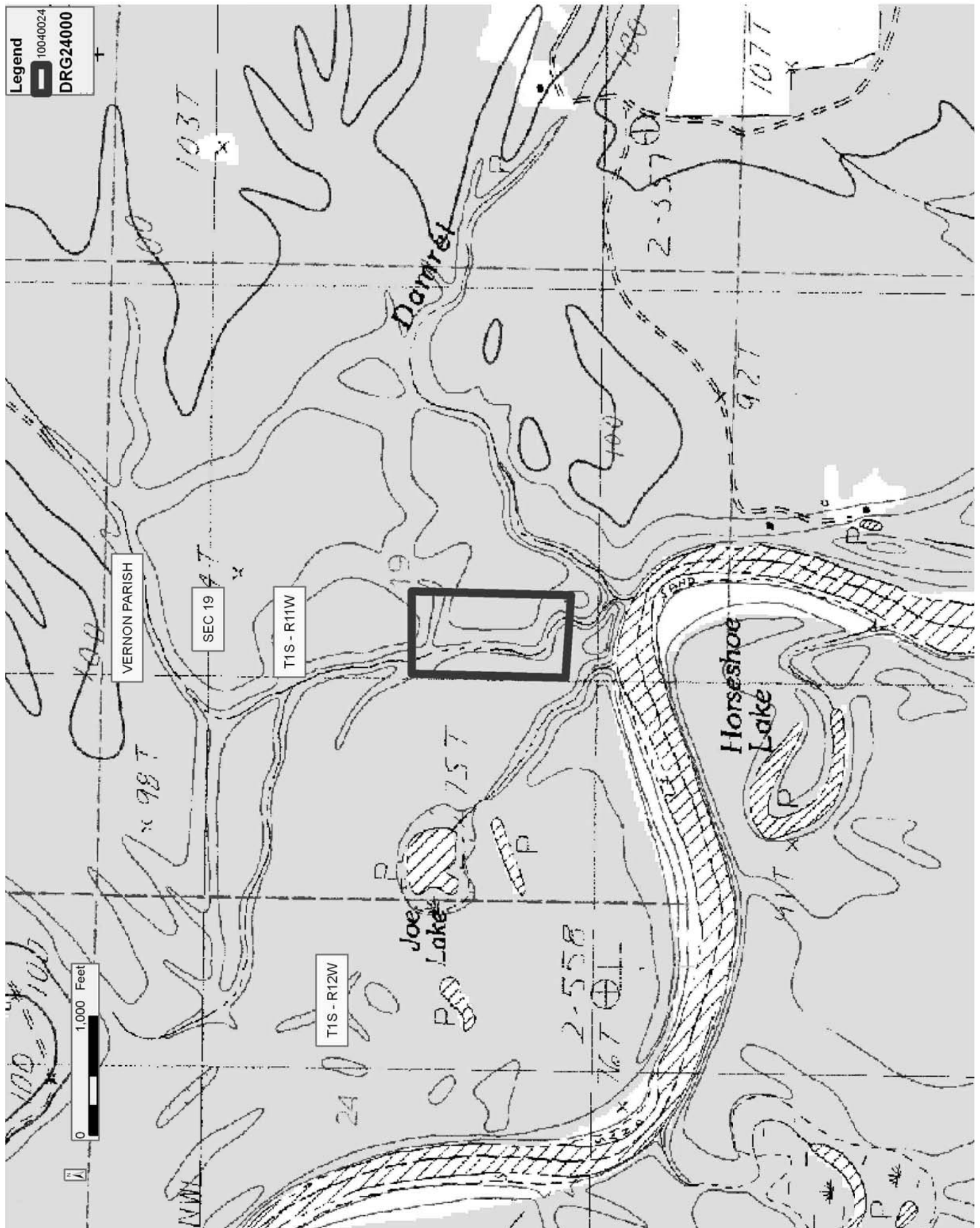
NOTE: The above description of the Tract nominated for lease has been provided and corrected, where required, exclusively by the nomination party. Any mineral lease selected from this Tract and awarded by the Louisiana State Mineral Board shall be without warranty of any kind, either express, implied, or statutory, including, but not limited to, the implied warranties of merchantability and fitness for a particular purpose. Should the mineral lease awarded by the Louisiana State Mineral Board be subsequently modified, cancelled or abrogated due to the existence of conflicting leases, operating agreements, private claims or other future obligations or conditions which may affect all or any portion of the leased Tract, it shall not relieve the Lessee of the obligation to pay any bonus due thereon to the Louisiana State Mineral Board, nor shall the Louisiana State Mineral Board be obligated to refund any consideration paid by the Lessor prior to such modification, cancellation, or abrogation, including, but not limited to, bonuses, rentals and royalties.

NOTE: The State of Louisiana owns only the mineral rights on this tract; the surface and other rights of ownership have been sold or patented out by the State.

Bidder	Cash Payment	Price/Acre	Rental	Oil	Gas	Other



Applicant: HEMPCO ENERGY RESOURCES



**TRACT 41408 - Vernon Parish, Louisiana**

All of the mineral rights only under land adjudicated to and acquired by the State of Louisiana in and through a proper tax sale, and subsequently alienated by the State which retained the mineral rights thereto, and which is not under valid mineral lease from the State of Louisiana on April 14, 2010, situated in Vernon Parish, Louisiana, and being more fully described as follows: The Southwest quarter (SW/4) of the Northwest quarter (NW/4) of Section 29, Township 1 South, Range 11 West, Vernon Parish, Louisiana, being the same land adjudicated to the State of Louisiana for unpaid taxes for the year 1923, in the name of M.E. Stark. Subsequently, the State of Louisiana granted Patent No. 13614, dated September 2, 1944 to Norris B. Craft, containing approximately **40 acres**, all as more particularly outlined on a plat on file in the Office of Mineral Resources, Department of Natural Resources. All bearings, distances and coordinates are based on Louisiana Coordinate System of 1927, (North or South Zone), where applicable.

NOTE: The above description of the Tract nominated for lease has been provided and corrected, where required, exclusively by the nomination party. Any mineral lease selected from this Tract and awarded by the Louisiana State Mineral Board shall be without warranty of any kind, either express, implied, or statutory, including, but not limited to, the implied warranties of merchantability and fitness for a particular purpose. Should the mineral lease awarded by the Louisiana State Mineral Board be subsequently modified, cancelled or abrogated due to the existence of conflicting leases, operating agreements, private claims or other future obligations or conditions which may affect all or any portion of the leased Tract, it shall not relieve the Lessee of the obligation to pay any bonus due thereon to the Louisiana State Mineral Board, nor shall the Louisiana State Mineral Board be obligated to refund any consideration paid by the Lessor prior to such modification, cancellation, or abrogation, including, but not limited to, bonuses, rentals and royalties.

NOTE: The State of Louisiana owns only the mineral rights on this tract; the surface and other rights of ownership have been sold or patented out by the State.

Bidder	Cash Payment	Price/Acre	Rental	Oil	Gas	Other

Applicant: HEMPCO ENERGY RESOURCES

