

TRACT 41421 - Bossier Parish, Louisiana

All of the lands now or formerly constituting the beds and bottoms of all water bodies of every nature and description the title of which vests in the State of Louisiana, together with all islands arising therein and other lands formed by accretion or by reliction, where allowed by law, excepting tax adjudicated lands, and not presently under mineral lease on May 12, 2010, situated in Bossier Parish, Louisiana, and more particularly described as follows: Beginning at the Northeast corner of State Lease No. 19349, also being the Southeast corner of State Lease No. 20030 having Coordinates of $X = 1,645,728.17$ and $Y = 652,364.67$; thence East approximately 16,246 feet to a point on the West boundary of State Lease No. 10415, as amended, having a Coordinate of $Y = 652,364.67$; thence Southerly approximately 640 feet along the West boundary of said State Lease No. 10415 to its Southernmost Southwest corner, also being the Northwest corner of State Lease No. 19756; thence Southerly approximately 5,125 feet along the West boundary of said State Lease No. 19756 to a point having a Coordinate of $Y = 646,600.00$; thence West approximately 5,580 feet to a point having Coordinates of $X = 1,656,396.70$ and $Y = 646,600.00$; thence Southerly approximately 10,518 feet to the Northwest corner of State Lease No. 16305, also being the Northeast corner of State Lease No. 19758; thence Westerly approximately 10,665 feet along the Northern boundary of said State Lease No. 19758 to its Northwest corner having Coordinates of $X = 1,645,728.17$ and $Y = 636,082.80$; thence North 2,717.20 feet to the Southeast corner of said State Lease No. 19349 having Coordinates of $X = 1,645,728.17$ and $Y = 638,800.00$; thence North 13,564.67 feet along the East boundary of said State Lease No. 19349 to the point of beginning, (This tract includes only waterbottoms claimed and owned by the state and specifically excludes any land which the state may claim or own and to which the mineral rights are vested in the state), containing approximately **85 acres**, all as more particularly outlined on a plat on file in the Office of Mineral Resources, Department of Natural Resources. All bearings, distances and coordinates are based on Louisiana Coordinate System of 1927, (North or South Zone), where applicable.

NOTE: The above description of the Tract nominated for lease has been provided and corrected, where required, exclusively by the nomination party. Any mineral lease selected from this Tract and awarded by the Louisiana State Mineral Board shall be without warranty of any kind, either express, implied, or statutory, including, but not limited to, the implied warranties of merchantability and fitness for a particular purpose. Should the mineral lease awarded by the Louisiana State Mineral Board be subsequently modified, cancelled or abrogated due to the existence of conflicting leases, operating agreements, private claims or other future obligations or conditions which may affect all or any portion of the leased Tract, it shall not relieve the Lessee of the obligation to pay any bonus due thereon to the Louisiana State Mineral Board, nor shall the Louisiana State Mineral Board be obligated to refund any consideration paid by the Lessor prior to such modification, cancellation, or abrogation, including, but not limited to, bonuses, rentals and royalties.

Applicant: THEOPHILUS OIL, GAS & LAND SERVICES, LLC

Bidder	Cash Payment	Price/Acre	Rental	Oil	Gas	Other

Legend

10050049

Active_Leases

IMAGERY.DOQQ_2004_1M

0 4,000 Feet

BOSSIER PARISH

SL 10415

T17N - R12W

SL 20030

T17N - R13W

P.O.B.

RED CHUTE BAYOU

SL 19349

SL 19756

FLAT RIVER

SL 19758

SL 16305

TRACT 41422 - Bienville and Bossier Parishes, Louisiana

All of the lands now or formerly constituting the beds and bottoms of all water bodies of every nature and description the title of which vests in the State of Louisiana, together with all islands arising therein and other lands formed by accretion or by reliction, where allowed by law, excepting tax adjudicated lands, and not presently under mineral lease on May 12, 2010, situated in Bienville and Bossier Parishes, Louisiana, and more particularly described as follows: Beginning at a point, said to be the Northeast Corner of Section 29, Township 16 North, Range 10 West, having Coordinates of X = 1,719,873.78 and Y = 614,172.76; thence South 00 degrees 14 minutes 09 seconds West 5,335.40 feet to a point having Coordinates of X = 1,719,851.82 and Y = 608,837.40; thence North 88 degrees 47 minutes 04 seconds West 2,632.45 feet to point having Coordinates of 1,717,219.96 and Y = 608,893.24; thence North 00 degrees 37 minutes 31 seconds East 5,295.62 feet to a point having Coordinates of X = 1,717,277.76 and Y = 614,188.54; thence South 89 degrees 39 minutes 06 seconds East 2,596.07 feet to the point of beginning, containing approximately **131 acres**, all as more particularly outlined on a plat on file in the Office of Mineral Resources, Department of Natural Resources. All bearings, distances and coordinates are based on Louisiana Coordinate System of 1927, (North or South Zone), where applicable.

NOTE: The above description of the Tract nominated for lease has been provided and corrected, where required, exclusively by the nomination party. Any mineral lease selected from this Tract and awarded by the Louisiana State Mineral Board shall be without warranty of any kind, either express, implied, or statutory, including, but not limited to, the implied warranties of merchantability and fitness for a particular purpose. Should the mineral lease awarded by the Louisiana State Mineral Board be subsequently modified, cancelled or abrogated due to the existence of conflicting leases, operating agreements, private claims or other future obligations or conditions which may affect all or any portion of the leased Tract, it shall not relieve the Lessee of the obligation to pay any bonus due thereon to the Louisiana State Mineral Board, nor shall the Louisiana State Mineral Board be obligated to refund any consideration paid by the Lessor prior to such modification, cancellation, or abrogation, including, but not limited to, bonuses, rentals and royalties.

NOTE: This tract encompasses an area beneath which is located on the Bistineau Gas Storage Pool in the Sligo formation of the Pettet Porosity. Accordingly, any mineral related activity, including, but not limited to, the exploration and drilling for, and the production and storage of oil, gas and other liquid or gaseous minerals, conducted under a valid mineral lease which may be obtained from the State, shall be subject to any statewide orders issued by the Louisiana Office of Conservation pertinent to conducting such operations in this area and upon this tract, including particularly, but not limited to, the following: Order Nos. 287, 287-A, 287-A-1, 287-B, Supplement to 287-B, 287-B-1, 287-B-2 and 287-B-3. The successful bidder on this tract shall contact the operator of the

Bistineau Gas Storage Pool and the Office of Conservation prior to initiating and conducting any of the aforementioned activity hereon.

NOTE: Bidders are hereby advised that certain areas in Lake Bistineau are the subject of litigation styled, Devon Energy Production Co., L.P. v. Gail Norton, Secretary, United States Department of the Interior, Docket No. 04-2093 (W.D. La.) wherein the Federal Government is claiming ownership or mineral rights to certain accreted lands, and, therefore, title to such accreted lands is in dispute. Any bids accepted by the State Mineral and Energy Board which result in a state mineral lease being given places the successful bidder on notice that, if the result of the above mentioned litigation is adverse to the State, the State's title to that adjudicated acreage, whether the whole or a part of the lease awarded, may be vitiated. Accordingly, all leases awarded by the State Mineral and Energy Board are without warranty of any kind, either express, implied, or statutory, including, but not limited to merchantability and fitness for a particular purpose. Should the awarded lease be subsequently modified, cancelled, or abrogated in any way as a result of the above mentioned or any other litigation, or conflicting private claims which affect or may affect all or any portion of the leased tract, the successful bidder/Lessee, their successors, or assigns shall not be relieved of the obligation to pay any monies due prior to the modification, cancellation, or abrogation, including, but not limited to, bonus, rental and royalty, nor shall the State be obligated to refund those monies paid.

Applicant: CLASSIC PETROLEUM, INC.

Bidder	Cash Payment	Price/Acre	Rental	Oil	Gas	Other

Legend

10050046

Counties

IMAGERY.DOQQ_2004_1M

0 2,000 Feet

BOSSIER PARISH

BIENVILLE PARISH

T16N - R10W

T16N - R10W

LAKE BISTINEAU

P.O.B.

TRACT 41423 - Calcasieu Parish, Louisiana

All of the lands now or formerly constituting the beds and bottoms of all water bodies of every nature and description the title of which vests in the State of Louisiana, together with all islands arising therein and other lands formed by accretion or by reliction, where allowed by law, excepting tax adjudicated lands, and not presently under mineral lease on May 12, 2010, situated in Calcasieu Parish, Louisiana, and more particularly described as follows: Beginning at a point having Coordinates of X = 1,430,245.95 and Y = 611,800.00; thence East 6,144.33 feet to a point having Coordinates of X = 1,436,390.28 and Y = 611,800.00; thence South 1,606.27 feet to a point having Coordinates of X = 1,436,390.28 and Y = 610,193.73; thence East 6,673.64 feet to a point having Coordinates of X = 1,443,063.92 and Y = 610,193.73; thence South 00 degrees 58 minutes 18 seconds West 4,194.33 feet to a point having Coordinates of X = 1,442,992.80 and Y = 606,000.00; thence East 2,707.20 feet to a point having Coordinates of X = 1,445,700.00 and Y = 606,000.00; thence South 6,059.45 feet to the Northeast corner of State Lease No. 20261 having Coordinates of X = 1,445,700.00 and Y = 599,940.55; thence West 5,932.01 feet along the North boundary of said State Lease No. 20261 to a point on the East boundary of Easternmost portion of State Lease No. 15691, as amended, having Coordinates of X = 1,439,767.99 and Y = 599,940.55; thence North 13 degrees 16 minutes 37 seconds East 111.45 feet along the East boundary of the Easternmost portion of said State Lease No. 15691 to its Northeast corner, also being the Southeast corner of State Lease No. 15690, as amended, having Coordinates of X = 1,439,793.59 and Y = 600,049.02; thence along the boundary of said State Lease No. 15690 the following courses: North 13 degrees 16 minutes 37 seconds East 1,038.56 feet to a corner having Coordinates of X = 1,440,032.10 and Y = 601,059.82; West 1,990.00 feet to a corner having Coordinates of X = 1,438,042.10 and Y = 601,059.82; South 13 degrees 16 minutes 37 seconds West 849.05 feet to a corner having Coordinates of X = 1,437,847.11 and Y = 600,233.46 and South 20 degrees 14 minutes 00 seconds East 163.91 feet to its Southwest corner, also being the Northwest corner of the Easternmost portion of said State Lease No. 15691 having Coordinates of X = 1,437,903.79 and Y = 600,079.67; thence South 20 degrees 14 minutes 02 seconds East 148.27 feet along the West boundary of the Easternmost portion of said State Lease No. 15691 to a corner of said State Lease No. 20261 having Coordinates of X = 1,437,955.07 and Y = 599,940.55; thence West 2,325.66 feet along the North boundary of said State Lease No. 20261 to the Northeast corner of the Westernmost portion of said State Lease No. 15691 having Coordinates of X = 1,435,629.41 and Y = 599,940.55; thence North 89 degrees 11 minutes 44 seconds West 1,450.00 feet along the North boundary of the Westernmost portion of said State Lease No. 15691 to its Northwest corner, also being a corner of said State Lease No. 20261 having Coordinates of X = 1,434,179.55 and Y = 599,960.91; thence West 3,933.60 feet along the North boundary of said State Lease No. 20261 to its Northwest corner having Coordinates of X = 1,430,245.95 and Y = 599,960.91; thence North 11,839.09 feet to the point of beginning, (This tract includes only waterbottoms claimed and owned by the state and

specifically excludes any land which the state may claim or own and to which the mineral rights are vested in the state), the above described tract containing approximately **143 acres**, all as more particularly outlined on a plat on file in the Office of Mineral Resources, Department of Natural Resources. All bearings, distances and coordinates are based on Louisiana Coordinate System of 1927, (North or South Zone), where applicable.

NOTE: The above description of the Tract nominated for lease has been provided and corrected, where required, exclusively by the nomination party. Any mineral lease selected from this Tract and awarded by the Louisiana State Mineral Board shall be without warranty of any kind, either express, implied, or statutory, including, but not limited to, the implied warranties of merchantability and fitness for a particular purpose. Should the mineral lease awarded by the Louisiana State Mineral Board be subsequently modified, cancelled or abrogated due to the existence of conflicting leases, operating agreements, private claims or other future obligations or conditions which may affect all or any portion of the leased Tract, it shall not relieve the Lessee of the obligation to pay any bonus due thereon to the Louisiana State Mineral Board, nor shall the Louisiana State Mineral Board be obligated to refund any consideration paid by the Lessor prior to such modification, cancellation, or abrogation, including, but not limited to, bonuses, rentals and royalties.

NOTE: The Office of Mineral Resources will require a minimum bonus of \$250 per acre and a minimum royalty of 23%.

NOTE: The above Tract is located upon a restricted scenic river and all operations in this area must be conducted in strict conformity with the regulations of the Corps of Engineers, U.S. Army.

Applicant: STAFF OFFICE OF MINERAL RESOURCES

Bidder	Cash Payment	Price/Acre	Rental	Oil	Gas	Other

Legend

10050018

Active Leases

IMAGERY.DOQQ_2008_1M_CIR

0 3,000 Feet



CALCASIEU PARISH

T8S - R7W

CALCASIEU RIVER

BAYOU SERPENT

P.O.B.

T9S - R8W

SL 15690

SL 15691

SL 15691

SL 20261

TRACT 41424 - Cameron Parish, Louisiana

All of the lands now or formerly constituting the beds and bottoms of all water bodies of every nature and description the title of which vests in the State of Louisiana, together with all islands arising therein and other lands formed by accretion or by reliction, where allowed by law, excepting tax adjudicated lands, and not presently under mineral lease on May 12, 2010, situated in Cameron Parish, Louisiana, and more particularly described as follows: Beginning at a point having Coordinates of X = 1,219,339.00 and Y = 481,853.00; thence South 5,800.00 feet to the Northeast corner of State Lease No. 20032 having Coordinates of X = 1,219,339.00 and Y = 476,053.00; thence West 2,950.33 feet along the boundary of said State Lease No. 20032 to its Northwest corner, also being a point on the Texas-Louisiana Boundary having Coordinates of X = 1,216,388.67 and Y = 476,053.00; thence along said Texas-Louisiana Boundary the following courses: North 08 degrees 18 minutes 12 seconds East 5,583.53 feet to a point having Coordinates of X = 1,217,195.00 and Y = 481,578.00 and North 20 degrees 16 minutes 30 seconds East 293.16 feet to a point having Coordinates of X = 1,217,296.59 and Y = 481,853.00; thence East 2,042.41 feet to the point of beginning, containing approximately **336.29 acres, LESS AND EXCEPT** that portion thereof, if any, located West of the boundary line between the States of Texas and Louisiana as determined by the report of the Special Master and adjudicated by the Supreme Court of the United States in litigation styled **Texas v. Louisiana, et al No. 36 Original**, or as otherwise approved by said court, all as more particularly outlined on a plat on file in the Office of Mineral Resources, Department of Natural Resources. All bearings, distances and coordinates are based on Louisiana Coordinate System of 1927, (North or South Zone), where applicable.

NOTE: The above description of the Tract nominated for lease has been provided and corrected, where required, exclusively by the nomination party. Any mineral lease selected from this Tract and awarded by the Louisiana State Mineral Board shall be without warranty of any kind, either express, implied, or statutory, including, but not limited to, the implied warranties of merchantability and fitness for a particular purpose. Should the mineral lease awarded by the Louisiana State Mineral Board be subsequently modified, cancelled or abrogated due to the existence of conflicting leases, operating agreements, private claims or other future obligations or conditions which may affect all or any portion of the leased Tract, it shall not relieve the Lessee of the obligation to pay any bonus due thereon to the Louisiana State Mineral Board, nor shall the Louisiana State Mineral Board be obligated to refund any consideration paid by the Lessor prior to such modification, cancellation, or abrogation, including, but not limited to, bonuses, rentals and royalties.

NOTE: The State of Louisiana does hereby reserve, and this lease shall be subject to, the imprescriptible right of surface use in the nature of a servitude in favor of the Department of Natural Resources, including its Offices and Commissions, for the sole purpose of implementing,

constructing, servicing and maintaining approved coastal zone management and/or restoration projects. Utilization of any and all rights derived under this lease by the mineral lessee, its agents, successors or assigns, shall not interfere with nor hinder the reasonable surface use by the Department of Natural Resources, its Offices or Commissions, as herein above reserved.

NOTE: The Department of Wildlife and Fisheries has designated certain areas in the coastal waters of the State of Louisiana as Oyster Seed Bed Areas. The exact location of those Seed Bed Areas must be obtained from the Department of Wildlife and Fisheries and any work done under a mineral lease from the State of Louisiana may necessarily be conducted in conformity with the rules and regulations promulgated by the said Department of Wildlife and Fisheries for Oyster Seed Bed Areas.

Applicant: SOUTH LOUISIANA MINERALS, INC.

Bidder	Cash Payment	Price/Acre	Rental	Oil	Gas	Other

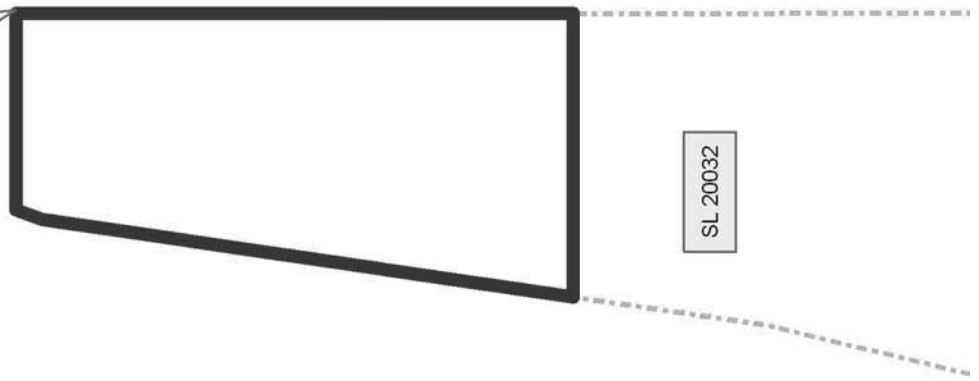
Legend
10050035
Active_Leases

CAMERON PARISH

SABINE LAKE

P.O.B.

SL 20032



TRACT 41425 - Cameron Parish, Louisiana

All of the lands now or formerly constituting the beds and bottoms of all water bodies of every nature and description the title of which vests in the State of Louisiana, together with all islands arising therein and other lands formed by accretion or by reliction, where allowed by law, excepting tax adjudicated lands, and not presently under mineral lease on May 12, 2010, situated in Cameron Parish, Louisiana, and more particularly described as follows: Beginning at a point having Coordinates X = 1,219,339.00 and Y = 481,853.00; thence East 5,800.00 feet to a point having Coordinates X = 1,225,139.00 and Y = 481,853.00; thence South 5,800.00 feet to a point having Coordinates X = 1,225,139.00 and Y = 476,053.00; thence West 5,800.00 feet to a point on the Northeast corner of State Lease No. 20032 having Coordinates X = 1,219,339.00 and Y = 476,053.00; thence North 5,800.00 feet to the point of beginning, containing approximately **772.27 acres, LESS AND EXCEPT** that portion thereof, if any, located West of the boundary line between the States of Texas and Louisiana as determined by the report of the Special Master and adjudicated by the Supreme Court of the United States in litigation styled **Texas v. Louisiana, et al No. 36 Original**, or as otherwise approved by said court, all as more particularly outlined on a plat on file in the Office of Mineral Resources, Department of Natural Resources. All bearings, distances and coordinates are based on Louisiana Coordinate System of 1927, (North or South Zone), where applicable.

NOTE: The above description of the Tract nominated for lease has been provided and corrected, where required, exclusively by the nomination party. Any mineral lease selected from this Tract and awarded by the Louisiana State Mineral Board shall be without warranty of any kind, either express, implied, or statutory, including, but not limited to, the implied warranties of merchantability and fitness for a particular purpose. Should the mineral lease awarded by the Louisiana State Mineral Board be subsequently modified, cancelled or abrogated due to the existence of conflicting leases, operating agreements, private claims or other future obligations or conditions which may affect all or any portion of the leased Tract, it shall not relieve the Lessee of the obligation to pay any bonus due thereon to the Louisiana State Mineral Board, nor shall the Louisiana State Mineral Board be obligated to refund any consideration paid by the Lessor prior to such modification, cancellation, or abrogation, including, but not limited to, bonuses, rentals and royalties.

NOTE: The State of Louisiana does hereby reserve, and this lease shall be subject to, the imprescriptible right of surface use in the nature of a servitude in favor of the Department of Natural Resources, including its Offices and Commissions, for the sole purpose of implementing, constructing, servicing and maintaining approved coastal zone management and/or restoration projects. Utilization of any and all rights derived under this lease by the mineral lessee, its agents, successors or assigns, shall not interfere with nor hinder the reasonable surface use by the

Department of Natural Resources, its Offices or Commissions, as herein above reserved.

NOTE: The Department of Wildlife and Fisheries has designated certain areas in the coastal waters of the State of Louisiana as Oyster Seed Bed Areas. The exact location of those Seed Bed Areas must be obtained from the Department of Wildlife and Fisheries and any work done under a mineral lease from the State of Louisiana may necessarily be conducted in conformity with the rules and regulations promulgated by the said Department of Wildlife and Fisheries for Oyster Seed Bed Areas.

Applicant: SOUTH LOUISIANA MINERALS, INC.

Bidder	Cash Payment	Price/Acre	Rental	Oil	Gas	Other

Legend
10050036
Active_Leases

CAMERON PARISH

SABINE LAKE

P.O.B.

SL 20032



TRACT 41426 - Cameron Parish, Louisiana

All of the lands now or formerly constituting the beds and bottoms of all water bodies of every nature and description the title of which vests in the State of Louisiana, together with all islands arising therein and other lands formed by accretion or by reliction, where allowed by law, excepting tax adjudicated lands, and not presently under mineral lease on May 12, 2010, situated in Cameron Parish, Louisiana, and more particularly described as follows: Beginning at a point having Coordinates of X = 1,225,139.00 and Y = 481,853.00; thence East 2,424.87 feet to a point on the Western boundary of State Lease No. 20235 having Coordinates of X = 1,227,563.87 and Y = 481,853.00; thence along the boundary of said State Lease No. 20235 the following courses: South 9,003.00 feet to a point having Coordinates of X = 1,227,563.87 and Y = 472,850.00 and East 5,800.00 feet to its Southeast corner to a point having Coordinates of X = 1,233,363.87 and Y = 472,850.00; thence South 2,550.00 feet to a point having Coordinates of X = 1,233,363.87 and Y = 470,300.00; thence West 8,224.87 feet to a point having Coordinates of X = 1,225,139.00 and Y = 470,300.00; thence North 11,553.00 feet to the point of beginning, containing approximately **855 acres**, all as more particularly outlined on a plat on file in the Office of Mineral Resources, Department of Natural Resources. All bearings, distances and coordinates are based on Louisiana Coordinate System of 1927, (North or South Zone), where applicable.

NOTE: The above description of the Tract nominated for lease has been provided and corrected, where required, exclusively by the nomination party. Any mineral lease selected from this Tract and awarded by the Louisiana State Mineral Board shall be without warranty of any kind, either express, implied, or statutory, including, but not limited to, the implied warranties of merchantability and fitness for a particular purpose. Should the mineral lease awarded by the Louisiana State Mineral Board be subsequently modified, cancelled or abrogated due to the existence of conflicting leases, operating agreements, private claims or other future obligations or conditions which may affect all or any portion of the leased Tract, it shall not relieve the Lessee of the obligation to pay any bonus due thereon to the Louisiana State Mineral Board, nor shall the Louisiana State Mineral Board be obligated to refund any consideration paid by the Lessor prior to such modification, cancellation, or abrogation, including, but not limited to, bonuses, rentals and royalties.

NOTE: The State of Louisiana does hereby reserve, and this lease shall be subject to, the imprescriptible right of surface use in the nature of a servitude in favor of the Department of Natural Resources, including its Offices and Commissions, for the sole purpose of implementing, constructing, servicing and maintaining approved coastal zone management and/or restoration projects. Utilization of any and all rights derived under this lease by the mineral lessee, its agents, successors or assigns, shall not interfere with nor hinder the reasonable surface use by the Department of Natural Resources, its Offices or Commissions, as herein above reserved.

NOTE: The Department of Wildlife and Fisheries has designated certain areas in the coastal waters of the State of Louisiana as Oyster Seed Bed Areas. The exact location of those Seed Bed Areas must be obtained from the Department of Wildlife and Fisheries and any work done under a mineral lease from the State of Louisiana may necessarily be conducted in conformity with the rules and regulations promulgated by the said Department of Wildlife and Fisheries for Oyster Seed Bed Areas.

Applicant: SOUTH LOUISIANA MINERALS, INC.

Bidder	Cash Payment	Price/Acre	Rental	Oil	Gas	Other

Legend

10050044

Active Leases

IMAGERY.DOQQ_2008_1M_CIR

CAMERON PARISH

T13S - R14W

SL 20235

P.O.B.

SABINE LAKE

0 3,000 Feet



TRACT 41427 - Assumption Parish, Louisiana

All of the lands now or formerly constituting the beds and bottoms of all water bodies of every nature and description the title of which vests in the State of Louisiana, together with all islands arising therein and other lands formed by accretion or by reliction, where allowed by law, excepting tax adjudicated lands, and not presently under mineral lease on May 12, 2010, situated in Assumption Parish, Louisiana, and more particularly described as follows: Beginning at a point having Coordinates of X = 2,051,035.44 and Y = 465,574.99; thence South 6,949.30 feet to a point being on the North boundary of State Lease No. 19940 having Coordinates of X = 2,051,035.44 and Y = 458,625.69; thence along the boundary of said State Lease No. 19940 the following courses: South 53 degrees 46 minutes 28 seconds West 4,610.48 feet to a point having Coordinates of X = 2,047,316.18 and Y = 455,901.06, South 2,281.06 feet to a point having Coordinates of X = 2,047,316.18 and Y = 453,620.00; thence West 3,550.00 feet leaving the boundary of said State Lease No. 19940 to a point having Coordinates of X = 2,043,766.18 and Y = 453,620.00; thence North 11,954.99 feet to a point having Coordinates of X = 2,043,766.18 and Y = 465,574.99; thence East 2,448.81 feet to a point on the boundary of State Lease No. 20142 having Coordinates of X = 2,046,214.99 and Y = 465,574.99; thence East 4,820.45 feet to the Point of Beginning, containing approximately **1,168.32 acres**, all as more particularly outlined on a plat on file in the Office of Mineral Resources, Department of Natural Resources. All bearings, distances and coordinates are based on Louisiana Coordinate System of 1927, (North or South Zone), where applicable.

NOTE: The above description of the Tract nominated for lease has been provided and corrected, where required, exclusively by the nomination party. Any mineral lease selected from this Tract and awarded by the Louisiana State Mineral Board shall be without warranty of any kind, either express, implied, or statutory, including, but not limited to, the implied warranties of merchantability and fitness for a particular purpose. Should the mineral lease awarded by the Louisiana State Mineral Board be subsequently modified, cancelled or abrogated due to the existence of conflicting leases, operating agreements, private claims or other future obligations or conditions which may affect all or any portion of the leased Tract, it shall not relieve the Lessee of the obligation to pay any bonus due thereon to the Louisiana State Mineral Board, nor shall the Louisiana State Mineral Board be obligated to refund any consideration paid by the Lessor prior to such modification, cancellation, or abrogation, including, but not limited to, bonuses, rentals and royalties.

Applicant: SUNCOAST LAND SERVICES, INC.

Bidder	Cash Payment	Price/Acre	Rental	Oil	Gas	Other

Legend

10050064

Active_Leases

IMAGERY.DOQQ_2008_1M_CIR

0 3,000 Feet



BAYOU PIERRE PART

SL 20142

GRAND BAYOU

P.O.B.

ASSUMPTION PARISH

T13S - R13E

LAKE VERRET

SL 19940

T13S - R12E

TRACT 41428 - Assumption Parish, Louisiana

All of the lands now or formerly constituting the beds and bottoms of all water bodies of every nature and description the title of which vests in the State of Louisiana, together with all islands arising therein and other lands formed by accretion or by reliction, where allowed by law, excepting tax adjudicated lands, and not presently under mineral lease on May 12, 2010, situated in Assumption Parish, Louisiana, and more particularly described as follows: Beginning at a point having Coordinates of X = 2,061,850.00 and Y = 465,574.99; thence South 11,954.99 feet to a point having Coordinates of X = 2,061,850.00 and Y = 453,620.00; thence West 6,750.00 feet to a point being the Southeast corner of State Lease No. 19940 having Coordinates of X = 2,055,100.00 and Y = 453,620.00; thence along the boundary of said State Lease No. 19940 the following courses: North 5,005.69 feet to a point having Coordinates of X = 2,055,100.00 and Y = 458,625.69, West 4,064.56 feet to a point having Coordinates of X = 2,051,035.44 and Y = 458,625.69; thence leaving the boundary of said State Lease No. 19940 North 6,949.30 feet to a point having Coordinates of X = 2,051,035.44 and Y = 465,574.99; thence East 10,814.56 feet to the point of beginning, (This lease includes only waterbottoms claimed and owned by the state and specifically excludes any land, including Elm Hall Wildlife Management Area, which the state may claim or own and to which the mineral rights are vested in the state), containing approximately **1,451.47 acres**, all as more particularly outlined on a plat on file in the Office of Mineral Resources, Department of Natural Resources. All bearings, distances and coordinates are based on Louisiana Coordinate System of 1927, (North or South Zone), where applicable.

NOTE: The above description of the Tract nominated for lease has been provided and corrected, where required, exclusively by the nomination party. Any mineral lease selected from this Tract and awarded by the Louisiana State Mineral Board shall be without warranty of any kind, either express, implied, or statutory, including, but not limited to, the implied warranties of merchantability and fitness for a particular purpose. Should the mineral lease awarded by the Louisiana State Mineral Board be subsequently modified, cancelled or abrogated due to the existence of conflicting leases, operating agreements, private claims or other future obligations or conditions which may affect all or any portion of the leased Tract, it shall not relieve the Lessee of the obligation to pay any bonus due thereon to the Louisiana State Mineral Board, nor shall the Louisiana State Mineral Board be obligated to refund any consideration paid by the Lessor prior to such modification, cancellation, or abrogation, including, but not limited to, bonuses, rentals and royalties.

Applicant: SUNCOAST LAND SERVICES, INC.

Bidder	Cash Payment	Price/Acre	Rental	Oil	Gas	Other

Legend

10050065

Wildlife

Active_Leases

IMAGERY.DOQQ_2008_1M_CIR

0 4,000 Feet

ASSUMPTION PARISH

T13S - R13E

P.O.B.

ELM HALL WMA

SL 19940

LAKE VERRET

T13S - R12E

TRACT 41429 - Cameron Parish, Louisiana

All of the lands now or formerly constituting the beds and bottoms of all water bodies of every nature and description the title of which vests in the State of Louisiana, together with all islands arising therein and other lands formed by accretion or by reliction, where allowed by law, excepting tax adjudicated lands, and not presently under mineral lease on May 12, 2010, situated in Cameron Parish, Louisiana, and more particularly described as follows: Beginning at the Northeast corner of State Lease No. 20032 having Coordinates of X = 1,219,339.00 and Y = 476,053.00; thence East 5,800.00 feet to a point having Coordinates of X = 1,225,139.00 and Y = 476,053.00; thence South 5,753.00 feet to a point having Coordinates of X = 1,225,139.00 and Y = 470,300.00; thence West 5,800.00 feet to the Southeast corner of said State Lease No. 20032 having Coordinates of X = 1,219,339.00 and Y = 470,300.00; thence North 5,753.00 feet along the boundary of said State Lease No. 20032 to the point of beginning, containing approximately **766.01 acres**, all as more particularly outlined on a plat on file in the Office of Mineral Resources, Department of Natural Resources. All bearings, distances and coordinates are based on Louisiana Coordinate System of 1927, (North or South Zone), where applicable.

NOTE: The above description of the Tract nominated for lease has been provided and corrected, where required, exclusively by the nomination party. Any mineral lease selected from this Tract and awarded by the Louisiana State Mineral Board shall be without warranty of any kind, either express, implied, or statutory, including, but not limited to, the implied warranties of merchantability and fitness for a particular purpose. Should the mineral lease awarded by the Louisiana State Mineral Board be subsequently modified, cancelled or abrogated due to the existence of conflicting leases, operating agreements, private claims or other future obligations or conditions which may affect all or any portion of the leased Tract, it shall not relieve the Lessee of the obligation to pay any bonus due thereon to the Louisiana State Mineral Board, nor shall the Louisiana State Mineral Board be obligated to refund any consideration paid by the Lessor prior to such modification, cancellation, or abrogation, including, but not limited to, bonuses, rentals and royalties.

NOTE: The State of Louisiana does hereby reserve, and this lease shall be subject to, the imprescriptible right of surface use in the nature of a servitude in favor of the Department of Natural Resources, including its Offices and Commissions, for the sole purpose of implementing, constructing, servicing and maintaining approved coastal zone management and/or restoration projects. Utilization of any and all rights derived under this lease by the mineral lessee, its agents, successors or assigns, shall not interfere with nor hinder the reasonable surface use by the Department of Natural Resources, its Offices or Commissions, as herein above reserved.

NOTE: The Department of Wildlife and Fisheries has designated certain areas in the coastal waters of the State of Louisiana as Oyster Seed Bed Areas. The exact location of those Seed Bed Areas must be obtained from the Department of Wildlife and Fisheries and any work done under a mineral lease from the State of Louisiana may necessarily be conducted in conformity with the rules and regulations promulgated by the said Department of Wildlife and Fisheries for Oyster Seed Bed Areas.

Applicant: SOUTH LOUISIANA MINERALS, INC.

Bidder	Cash Payment	Price/Acre	Rental	Oil	Gas	Other

Legend
10050042
Active_Leases

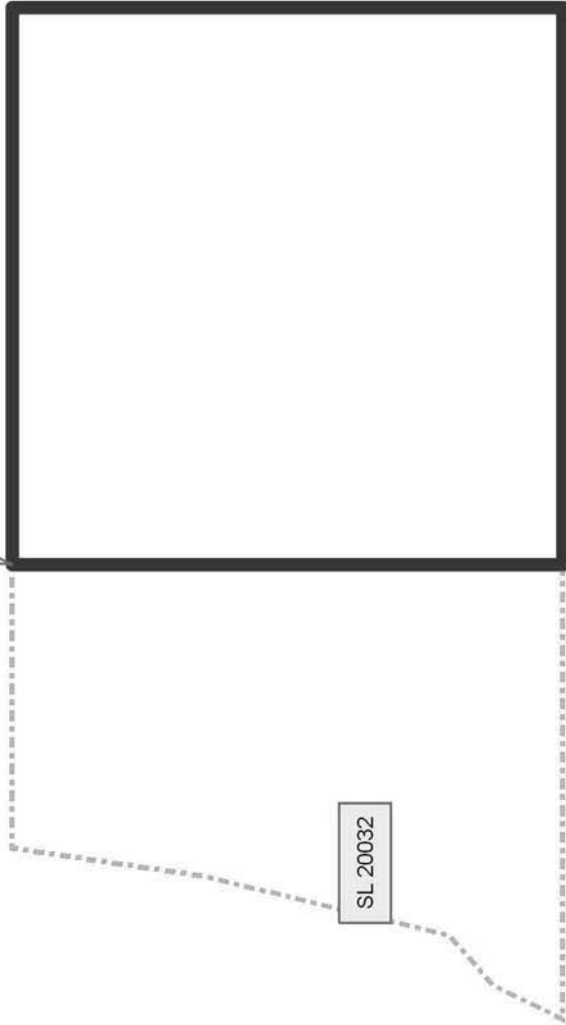


CAMERON PARISH

SABINE LAKE

P.O.B.

SL 20032



TRACT 41430 - Cameron Parish, Louisiana

All of the lands now or formerly constituting the beds and bottoms of all water bodies of every nature and description the title of which vests in the State of Louisiana, together with all islands arising therein and other lands formed by accretion or by reliction, where allowed by law, excepting tax adjudicated lands, and not presently under mineral lease on May 12, 2010, situated in Cameron Parish, Louisiana, and more particularly described as follows: Beginning at the Southeast corner of State Lease No. 20032 having Coordinates of X = 1,219,339.00 and Y = 470,300.00; thence South 5,800.00 feet to a point having Coordinates of X = 1,219,339.00 and Y = 464,500.00; thence West 6,155.84 feet to a point on the Texas-Louisiana Boundary having Coordinates of X = 1,213,183.16 and Y = 464,500.00; thence along said Texas-Louisiana Boundary the following courses: North 14 degrees 23 minutes 58 seconds East 4,491.08 feet to a point having Coordinates of X = 1,214,300.00 and Y = 468,850.00, and North 11 degrees 52 minutes 43 seconds East 1,481.73 feet to the Southwest corner of said State Lease No. 20032 having Coordinates of X = 1,214,605.00 and Y = 470,300.00; thence East 4,734.00 feet along the boundary of said State Lease No. 20032 to the point of beginning, containing approximately **721.63 acres, LESS AND EXCEPT** that portion thereof, if any, located West of the boundary line between the States of Texas and Louisiana as determined by the report of the Special Master and adjudicated by the Supreme Court of the United States in litigation styled **Texas v. Louisiana, et al No. 36 Original**, or as otherwise approved by said court, all as more particularly outlined on a plat on file in the Office of Mineral Resources, Department of Natural Resources. All bearings, distances and coordinates are based on Louisiana Coordinate System of 1927, (North or South Zone), where applicable.

NOTE: The above description of the Tract nominated for lease has been provided and corrected, where required, exclusively by the nomination party. Any mineral lease selected from this Tract and awarded by the Louisiana State Mineral Board shall be without warranty of any kind, either express, implied, or statutory, including, but not limited to, the implied warranties of merchantability and fitness for a particular purpose. Should the mineral lease awarded by the Louisiana State Mineral Board be subsequently modified, cancelled or abrogated due to the existence of conflicting leases, operating agreements, private claims or other future obligations or conditions which may affect all or any portion of the leased Tract, it shall not relieve the Lessee of the obligation to pay any bonus due thereon to the Louisiana State Mineral Board, nor shall the Louisiana State Mineral Board be obligated to refund any consideration paid by the Lessor prior to such modification, cancellation, or abrogation, including, but not limited to, bonuses, rentals and royalties.

NOTE: The State of Louisiana does hereby reserve, and this lease shall be subject to, the imprescriptible right of surface use in the nature of a servitude in favor of the Department of Natural Resources, including its Offices and Commissions, for the sole purpose of implementing,

constructing, servicing and maintaining approved coastal zone management and/or restoration projects. Utilization of any and all rights derived under this lease by the mineral lessee, its agents, successors or assigns, shall not interfere with nor hinder the reasonable surface use by the Department of Natural Resources, its Offices or Commissions, as herein above reserved.

NOTE: The Department of Wildlife and Fisheries has designated certain areas in the coastal waters of the State of Louisiana as Oyster Seed Bed Areas. The exact location of those Seed Bed Areas must be obtained from the Department of Wildlife and Fisheries and any work done under a mineral lease from the State of Louisiana may necessarily be conducted in conformity with the rules and regulations promulgated by the said Department of Wildlife and Fisheries for Oyster Seed Bed Areas.

Applicant: SOUTH LOUISIANA MINERALS, INC.

Bidder	Cash Payment	Price/Acre	Rental	Oil	Gas	Other

Legend
10050040
Active Leases

CAMERON PARISH

SABINE LAKE

SL 20032

P.O.B.

