

TRACT 41526 - Caddo Parish, Louisiana

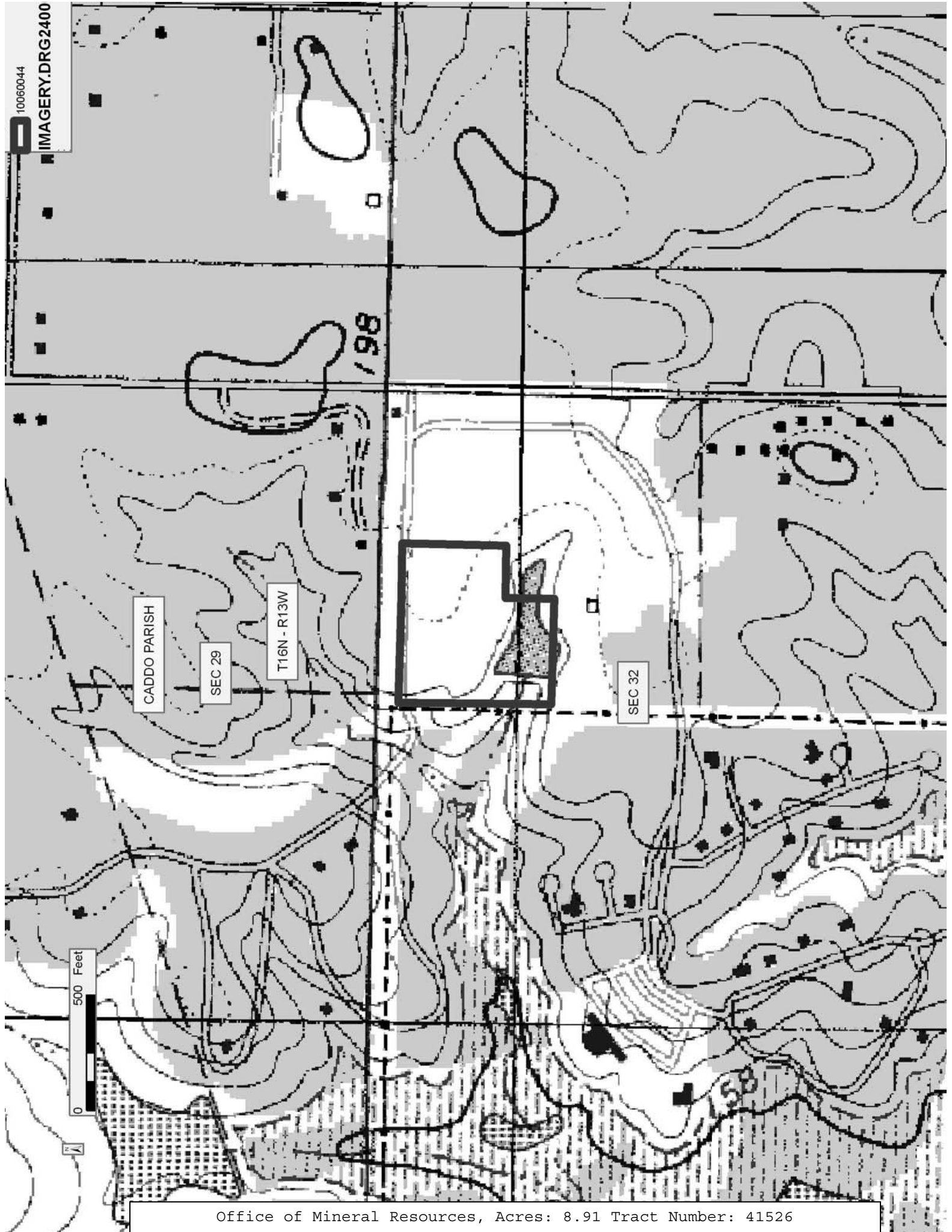
All of the mineral rights only under land adjudicated to and acquired by the State of Louisiana in and through a proper tax sale, and subsequently alienated by the State which retained the mineral rights thereto, and which is not under valid mineral lease from the State of Louisiana on June 9, 2010, situated in Caddo Parish, Louisiana, and being more fully described as follows: West 2 acres of the East 7 acres of that portion of Northeast Quarter of Northeast Quarter of Section 32, Township 16 North Range 13 West, less the South 924 feet, being 2 acres, more or less, Tract 2: West 6.91 acres of the North 13.91 acres of Northeast Quarter of Northeast Quarter of Section 32, Township 16 North Range 13 West, being 6.91 acres, more or less, All located in Caddo Parish, Louisiana and containing a total of **8.91 acres**, all as more particularly outlined on a plat on file in the Office of Mineral Resources, Department of Natural Resources. All bearings, distances and coordinates are based on Louisiana Coordinate System of 1927, (North or South Zone), where applicable.

NOTE: The above description of the Tract nominated for lease has been provided and corrected, where required, exclusively by the nomination party. Any mineral lease selected from this Tract and awarded by the Louisiana State Mineral Board shall be without warranty of any kind, either express, implied, or statutory, including, but not limited to, the implied warranties of merchantability and fitness for a particular purpose. Should the mineral lease awarded by the Louisiana State Mineral Board be subsequently modified, cancelled or abrogated due to the existence of conflicting leases, operating agreements, private claims or other future obligations or conditions which may affect all or any portion of the leased Tract, it shall not relieve the Lessee of the obligation to pay any bonus due thereon to the Louisiana State Mineral Board, nor shall the Louisiana State Mineral Board be obligated to refund any consideration paid by the Lessor prior to such modification, cancellation, or abrogation, including, but not limited to, bonuses, rentals and royalties.

NOTE: There shall be no surface operations conducted on this property without prior written consent.

Applicant: PROLAND, LLC

Bidder	Cash Payment	Price/Acre	Rental	Oil	Gas	Other



TRACT 41527 - Calcasieu Parish, Louisiana

All of the mineral rights only under land adjudicated to and acquired by the State of Louisiana in and through a proper tax sale, and subsequently alienated by the State which retained the mineral rights thereto, and which is not under valid mineral lease from the State of Louisiana on June 9, 2010, situated in Calcasieu Parish, Louisiana, and being more fully described as follows: Beginning at a point having Coordinates of X = 1,298,150.00 and Y = 572,150.00; thence East 2,400.00 feet to a point having Coordinates of X = 1,300,550.00 and Y = 572,150.00; thence South 3,700.00 feet to a point having Coordinates of X = 1,300,550.00 and Y = 568,450.00; thence West 2,400.00 feet to a point having Coordinates of X = 1,298,150.00 and Y = 568,450.00; thence North 3,700.00 feet to the point of beginning, more fully described as being all that portion of the East half of the Northwest Quarter of the Southwest Quarter (E/2 of NW/4 of SW/4) of Section 1, Township 10 South, Range 12 West containing approximately 20 acres and that portion of the South half of the Southwest Quarter of the Southwest Quarter (S/2 of SW/4 of SW/4) of Section 1, Township 10 South, Range 12 West containing approximately 19.73 acres containing a total of approximately **39.73 acres**, all as more particularly outlined on a plat on file in the Office of Mineral Resources, Department of Natural Resources. All bearings, distances and coordinates are based on Louisiana Coordinate System of 1927, (North or South Zone), where applicable.

NOTE: The above description of the Tract nominated for lease has been provided and corrected, where required, exclusively by the nomination party. Any mineral lease selected from this Tract and awarded by the Louisiana State Mineral Board shall be without warranty of any kind, either express, implied, or statutory, including, but not limited to, the implied warranties of merchantability and fitness for a particular purpose. Should the mineral lease awarded by the Louisiana State Mineral Board be subsequently modified, cancelled or abrogated due to the existence of conflicting leases, operating agreements, private claims or other future obligations or conditions which may affect all or any portion of the leased Tract, it shall not relieve the Lessee of the obligation to pay any bonus due thereon to the Louisiana State Mineral Board, nor shall the Louisiana State Mineral Board be obligated to refund any consideration paid by the Lessor prior to such modification, cancellation, or abrogation, including, but not limited to, bonuses, rentals and royalties.

NOTE: There shall be no surface operations conducted on this property without prior written consent.

Applicant: CHARLESTON ENERGY, INC.

Bidder	Cash Payment	Price/Acre	Rental	Oil	Gas	Other

Legend

10060025

IMAGERY.DRG24000

