

**TRACT 41557 - Portion of Blocks 3, and 4, Vermilion Area, Revised, Vermilion Parish, Louisiana**

The beds and bottoms of all water bodies belonging to the State of Louisiana located in Blocks 3, and 4, Vermilion Area, Revised, together with any present lands formed by accretion to the shoreline or islands formed therein, located in Vermilion Parish, Louisiana, owned by and not presently under mineral lease as of August 11, 2010, from the State of Louisiana, the geographical area of which is more fully described as follows: Beginning at a point on the South line of Block 3, Vermilion Area, Revised having Coordinates of X = 1,628,100.00 and Y = 317,582.82; thence North approximately 8,594 feet to a point on the boundary of the Rockefeller Wildlife Refuge and Game Preserve having a Coordinate of X = 1,628,100.00; thence along the boundary of said Rockefeller Wildlife Refuge and Game Preserve the following courses: Easterly approximately 275 feet and Northerly approximately 1,853 feet to a point on the Louisiana Coastline, as decreed by the Supreme Court of the United States, as determined by a Special Master appointed therein, in litigation styled *United States v. State of Louisiana et al No. 9 Original*, in 1975; thence along said Coastline the following courses: Southeasterly on a straight line to a point having Coordinates of X = 1,629,147 and Y = 327,939, and Southeasterly on a straight line to a point having Coordinates of X = 1,638,100.00 and Y = 326,766.41; thence South 9,183.59 feet to a point on the South line of Block 4, Vermilion Area, Revised having Coordinates of X = 1,638,100.00 and Y = 317,582.82; thence West 10,000.00 feet along the South lines of said Block 3 and Block 4 to the point of beginning, containing approximately **2,246 acres**, all as more particularly outlined on a plat on file in the Office of Mineral Resources, Department of Natural Resources. All bearings, distances and coordinates are based on Louisiana Coordinate System of 1927, (North or South Zone).

NOTE: The above description of the Tract nominated for lease has been provided and corrected, where required, exclusively by the nomination party. Any mineral lease selected from this Tract and awarded by the Louisiana State Mineral Board shall be without warranty of any kind, either express, implied, or statutory, including, but not limited to, the implied warranties of merchantability and fitness for a particular purpose. Should the mineral lease awarded by the Louisiana State Mineral Board be subsequently modified, cancelled or abrogated due to the existence of conflicting leases, operating agreements, private claims or other future obligations or conditions which may affect all or any portion of the leased Tract, it shall not relieve the Lessee of the obligation to pay any bonus due thereon to the Louisiana State Mineral Board, nor shall the Louisiana State Mineral Board be obligated to refund any consideration paid by the Lessor prior to such modification, cancellation, or abrogation, including, but not limited to, bonuses, rentals and royalties.

NOTE: The State of Louisiana does hereby reserve, and this lease shall be subject to, the imprescriptible right of surface use in the nature of a servitude in favor of the Department of Natural Resources, including its Offices and Commissions, for the sole purpose of implementing,

constructing, servicing and maintaining approved coastal zone management and/or restoration projects. Utilization of any and all rights derived under this lease by the mineral lessee, its agents, successors or assigns, shall not interfere with nor hinder the reasonable surface use by the Department of Natural Resources, its Offices or Commissions, as herein above reserved.

Applicant: PATRICK L. DONOHUE PETROLEUM PROPERTIES, INC.

Bidder	Cash Payment	Price/Acre	Rental	Oil	Gas	Other

**Legend**

- 10080038
- Wildlife
- Blocks

VERMILION PARISH

VR0004

VR0017

ROCKEFELLER WILDLIFE REFUGE

0 2,000 Feet

P.O.B.

VR0018

VR0003

GULF OF MEXICO

VERMILION AREA, REVISED

**Legend**

- 10080038
- Wildlife
- Blocks

VERMILION PARISH

VR0004

VR0017

ROCKEFELLER WILDLIFE REFUGE

0 2,000 Feet



VR0003

GULF OF MEXICO

VERMILION AREA, REVISED

P.O.B.

VR0018

**TRACT 41558 - Portion of Block 3, Vermilion Area, Revised, Vermilion Parish, Louisiana**

The beds and bottoms of all water bodies belonging to the State of Louisiana located in Block 3, Vermilion Area, Revised, together with any present lands formed by accretion to the shoreline or islands formed therein, located in Vermilion Parish, Louisiana, owned by and not presently under mineral lease as of August 11, 2010, from the State of Louisiana, the geographical area of which is more fully described as follows: Beginning at a point on the South line of Block 3, Vermilion Area, Revised having Coordinates of X = 1,618,600.00 and Y = 317,582.82; thence North approximately 9,517 feet to a point on the Southern boundary of the Rockefeller Wildlife Refuge and Game Preserve having a Coordinate of X = 1,618,600.00; thence Southeasterly approximately 9,547 feet along the boundary of said Rockefeller Wildlife Refuge and Game Preserve to the point of intersection with a North-South line having a Coordinate of X = 1,628,100.00; thence South approximately 8,594 feet to a point on the South line of said Block 3 having Coordinates of X = 1,628,100.00 and Y = 317,582.82; thence West 9,500.00 feet along the South line of said Block 3 to the point of beginning, containing approximately **1,963 acres**, all as more particularly outlined on a plat on file in the Office of Mineral Resources, Department of Natural Resources. All bearings, distances and coordinates are based on Louisiana Coordinate System of 1927, (North or South Zone).

NOTE: The above description of the Tract nominated for lease has been provided and corrected, where required, exclusively by the nomination party. Any mineral lease selected from this Tract and awarded by the Louisiana State Mineral Board shall be without warranty of any kind, either express, implied, or statutory, including, but not limited to, the implied warranties of merchantability and fitness for a particular purpose. Should the mineral lease awarded by the Louisiana State Mineral Board be subsequently modified, cancelled or abrogated due to the existence of conflicting leases, operating agreements, private claims or other future obligations or conditions which may affect all or any portion of the leased Tract, it shall not relieve the Lessee of the obligation to pay any bonus due thereon to the Louisiana State Mineral Board, nor shall the Louisiana State Mineral Board be obligated to refund any consideration paid by the Lessor prior to such modification, cancellation, or abrogation, including, but not limited to, bonuses, rentals and royalties.

NOTE: The State of Louisiana does hereby reserve, and this lease shall be subject to, the imprescriptible right of surface use in the nature of a servitude in favor of the Department of Natural Resources, including its Offices and Commissions, for the sole purpose of implementing, constructing, servicing and maintaining approved coastal zone management and/or restoration projects. Utilization of any and all rights derived under this lease by the mineral lessee, its agents, successors or assigns, shall not interfere with nor hinder the reasonable surface use by the

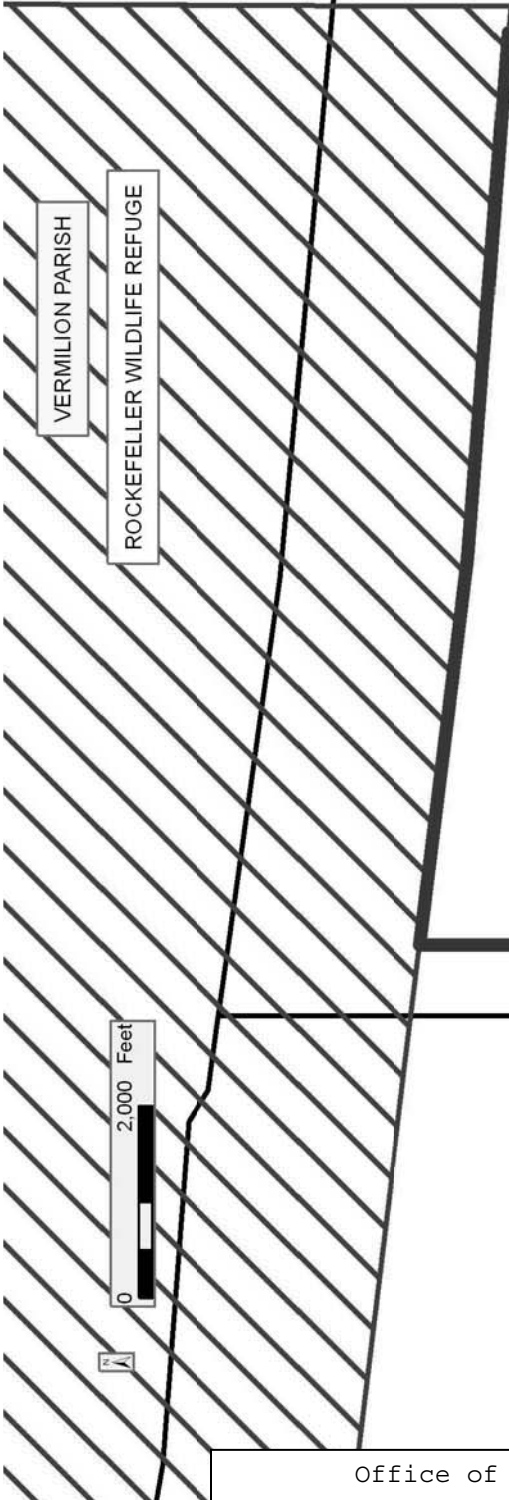
Department of Natural Resources, its Offices or Commissions, as herein above reserved.

Applicant: PATRICK L. DONOHUE PETROLEUM PROPERTIES, INC.

Bidder	Cash Payment	Price/Acre	Rental	Oil	Gas	Other

**Legend**

- 10080037
- Wildlife
- Blocks



VR0003

VR0002

GULF OF MEXICO

VR0018

VERMILION AREA, REVISED

P.O.B.

**TRACT 41559 - Portion of Block 4, Vermilion Area, Revised, Vermilion Parish, Louisiana**

The beds and bottoms of all water bodies belonging to the State of Louisiana located in Block 4, Vermilion Area, Revised, together with any present lands formed by accretion to the shoreline or islands formed therein, located in Vermilion Parish, Louisiana, owned by and not presently under mineral lease as of August 11, 2010, from the State of Louisiana, the geographical area of which is more fully described as follows: Beginning at a point on the South line of Block 4, Vermilion Area, Revised having Coordinates of X = 1,638,100.00 and Y = 317,582.82; thence North 9,183.59 feet to a point on the Louisiana Coastline, as decreed by the Supreme Court of the United States, as determined by a Special Master appointed therein, in litigation styled United States v. State of Louisiana et al No. 9 Original, in 1975, having Coordinates of X = 1,638,100.00 and Y = 326,766.41; thence Southeasterly on a straight line to a point having Coordinates of X = 1,639,027.00 and Y = 326,645.00; thence Southeasterly on a straight line to the Northeast corner of said Block 4 having Coordinates of X = 1,647,382.17 and Y = 325,204.61; thence South 4,604.61 feet along the East line of said Block 4 to the Northeast corner of State Lease No. 19995 having Coordinates of X = 1,647,382.17 and Y = 320,600.00; thence along the boundary of said State Lease No. 19995 the following courses: West 2,282.17 feet and South 3,017.18 feet to its Southwest corner, also being a point on the South line of said Block 4 having Coordinates of X = 1,645,100.00 and Y = 317,582.82; thence West 7,000.00 feet along the South line of said Block 4 to the point of beginning, containing approximately **1,636.13 acres**, all as more particularly outlined on a plat on file in the Office of Mineral Resources, Department of Natural Resources. All bearings, distances and coordinates are based on Louisiana Coordinate System of 1927, (North or South Zone).

NOTE: The above description of the Tract nominated for lease has been provided and corrected, where required, exclusively by the nomination party. Any mineral lease selected from this Tract and awarded by the Louisiana State Mineral Board shall be without warranty of any kind, either express, implied, or statutory, including, but not limited to, the implied warranties of merchantability and fitness for a particular purpose. Should the mineral lease awarded by the Louisiana State Mineral Board be subsequently modified, cancelled or abrogated due to the existence of conflicting leases, operating agreements, private claims or other future obligations or conditions which may affect all or any portion of the leased Tract, it shall not relieve the Lessee of the obligation to pay any bonus due thereon to the Louisiana State Mineral Board, nor shall the Louisiana State Mineral Board be obligated to refund any consideration paid by the Lessor prior to such modification, cancellation, or abrogation, including, but not limited to, bonuses, rentals and royalties.

NOTE: The State of Louisiana does hereby reserve, and this lease shall be subject to, the imprescriptible right of surface use in the nature of a



servitude in favor of the Department of Natural Resources, including its Offices and Commissions, for the sole purpose of implementing, constructing, servicing and maintaining approved coastal zone management and/or restoration projects. Utilization of any and all rights derived under this lease by the mineral lessee, its agents, successors or assigns, shall not interfere with nor hinder the reasonable surface use by the Department of Natural Resources, its Offices or Commissions, as herein above reserved.

Applicant: PATRICK L. DONOHUE PETROLEUM PROPERTIES, INC.

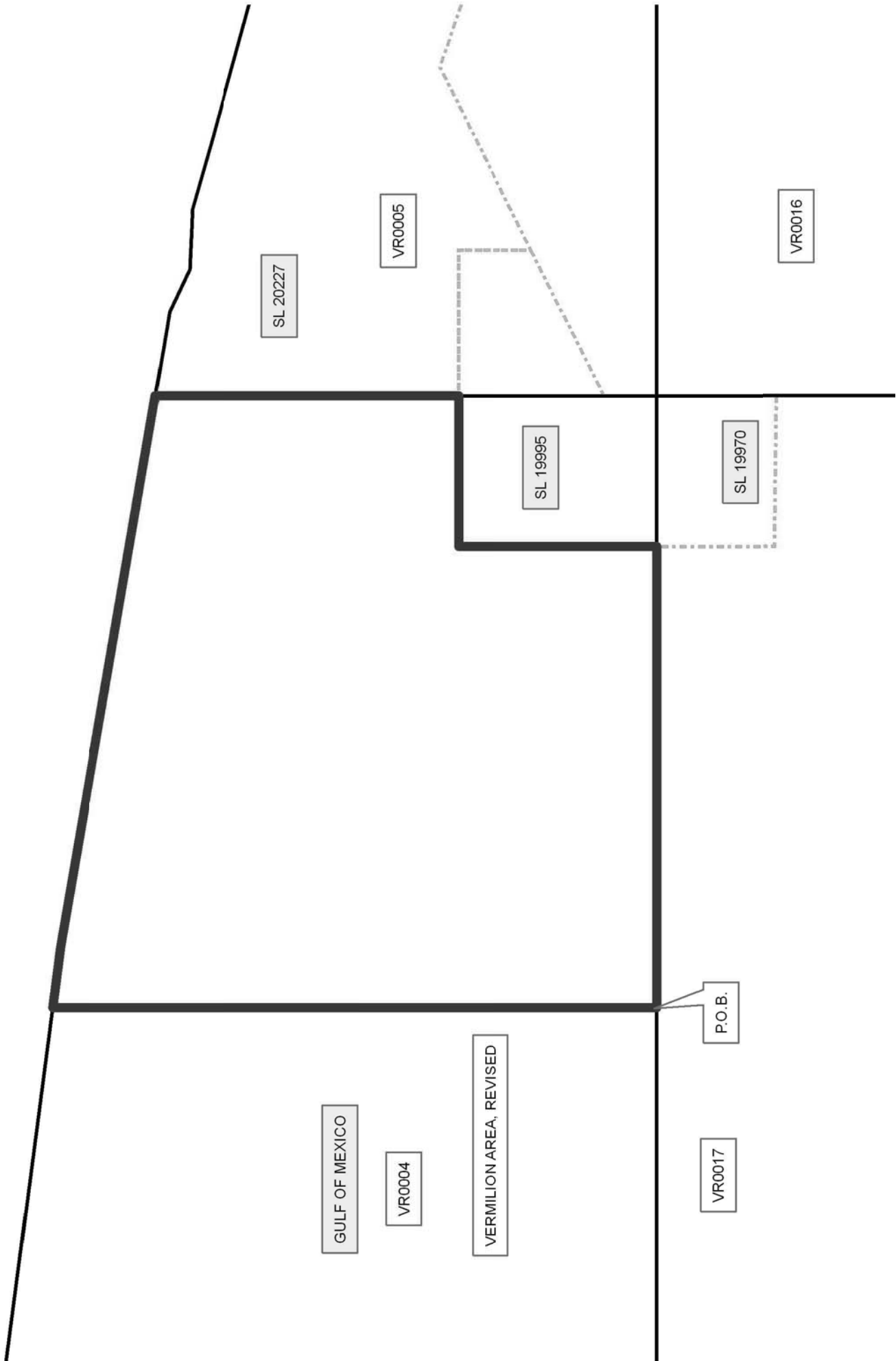
Bidder	Cash Payment	Price/Acre	Rental	Oil	Gas	Other

**Legend**

- 10080039
- Blocks
- Active Leases



VERMILION PARISH



**TRACT 41560 - Portion of Block 6, Vermilion Area, Revised, Vermilion Parish, Louisiana**

The beds and bottoms of all water bodies belonging to the State of Louisiana located in Block 6, Vermilion Area, Revised, together with any present lands formed by accretion to the shoreline or islands formed therein, located in Vermilion Parish, Louisiana, owned by and not presently under mineral lease as of August 11, 2010, from the State of Louisiana, the geographical area of which is more fully described as follows: Beginning at the Northeast corner of State Lease No. 20228, said point being a point on the Louisiana Coastline, as decreed by the Supreme Court of the United States, as determined by a Special Master appointed therein, in litigation styled *United States v. State of Louisiana et al No. 9 Original*, in 1975, and is located on the North line of Block 6, Vermilion Area, Revised having Coordinates of X = 1,669,519.25 and Y = 320,898.82; thence along said coastline and North line of said Block 6 the following courses: Southeasterly on a straight line to a point having Coordinates of X = 1,671,018 and Y = 320,396, Southeasterly on a straight line to a point having Coordinates of X = 1,675,346 and Y = 319,196 and Southeasterly on a straight line to the Northeast corner of said Block 6 having Coordinates of X = 1,676,898.27 and Y = 318,813.64; thence South 2,851.85 feet along the East line of said Block 6 to a point having Coordinates of X = 1,676,898.27 and Y = 315,961.79; thence West 7,379.02 feet to a point on the East boundary of State Lease No. 20230 having Coordinates of X = 1,669,519.25 and Y = 315,961.79; thence North 902.01 feet along the East boundary of said State Lease No. 20230 to its Northeast corner, said point also being the Southeast corner of said State Lease No. 20228 having Coordinates of X = 1,669,519.25 and Y = 316,863.80; thence North 4,035.02 feet along the East boundary of said State Lease No. 20228 to the point of beginning, containing approximately **650.61 acres**, all as more particularly outlined on a plat on file in the Office of Mineral Resources, Department of Natural Resources. All bearings, distances and coordinates are based on Louisiana Coordinate System of 1927, (North or South Zone).

NOTE: The above description of the Tract nominated for lease has been provided and corrected, where required, exclusively by the nomination party. Any mineral lease selected from this Tract and awarded by the Louisiana State Mineral Board shall be without warranty of any kind, either express, implied, or statutory, including, but not limited to, the implied warranties of merchantability and fitness for a particular purpose. Should the mineral lease awarded by the Louisiana State Mineral Board be subsequently modified, cancelled or abrogated due to the existence of conflicting leases, operating agreements, private claims or other future obligations or conditions which may affect all or any portion of the leased Tract, it shall not relieve the Lessee of the obligation to pay any bonus due thereon to the Louisiana State Mineral Board, nor shall the Louisiana State Mineral Board be obligated to refund any consideration paid by the Lessor prior to such modification, cancellation, or abrogation, including, but not limited to, bonuses, rentals and royalties.

NOTE: The State of Louisiana does hereby reserve, and this lease shall be subject to, the imprescriptible right of surface use in the nature of a servitude in favor of the Department of Natural Resources, including its Offices and Commissions, for the sole purpose of implementing, constructing, servicing and maintaining approved coastal zone management and/or restoration projects. Utilization of any and all rights derived under this lease by the mineral lessee, its agents, successors or assigns, shall not interfere with nor hinder the reasonable surface use by the Department of Natural Resources, its Offices or Commissions, as herein above reserved.

Applicant: THEOPHILUS OIL, GAS & LAND SERVICES, LLC

Bidder	Cash Payment	Price/Acre	Rental	Oil	Gas	Other

**Legend**

- 10080029
- Blocks
- Active Leases



VERMILION PARISH

T17S - R1E

P.O.B.

SL 20228

GULF OF MEXICO

VR0006

VERMILION AREA, REVISED

VR0007

SL 20230

**TRACT 41561 - Portion of Block 17, Vermilion Area, Revised, Vermilion Parish, Louisiana**

The beds and bottoms of all water bodies belonging to the State of Louisiana located in Block 17, Vermilion Area, Revised, together with any present lands formed by accretion to the shoreline or islands formed therein, located in Vermilion Parish, Louisiana, owned by and not presently under mineral lease as of August 11, 2010, from the State of Louisiana, the geographical area of which is more fully described as follows: Beginning at the Northwest corner of Block 17, Vermilion Area, Revised having Coordinates of X = 1,632,624.12 and Y = 317,582.82; thence East 12,475.88 feet along the North line of said Block 17 to the Northwest corner of State Lease No. 19970 having Coordinates of X = 1,645,100.00 and Y = 317,582.82; thence South 1,785.33 feet along the boundary of said State Lease No. 19970 to its Southwest corner, also being a point on the Northern boundary of State Lease No. 17156 having Coordinates of X = 1,645,100.00 and Y = 315,797.49; thence along the boundary of said State Lease No. 17156 the following courses: North 89 degrees 16 minutes 38 seconds West 4,628.69 feet, South 06 degrees 55 minutes 12 seconds West 303.86 feet, South 11 degrees 08 minutes 33 seconds West 369.26 feet, South 19 degrees 26 minutes 17 seconds West 413.81 feet, South 24 degrees 11 minutes 25 seconds West 173.66 feet, South 27 degrees 19 minutes 09 seconds West 398.94 feet and South 33 degrees 56 minutes 36 seconds West 463.79 feet to the Easternmost corner of State Lease No. 19969 having Coordinates of X = 1,639,712.78 and Y = 313,904.10; thence along the boundary of said State Lease No. 19969 the following courses: North 49 degrees 30 minutes 17 seconds West 1,788.79 feet and West 1,328.36 feet to its Northwest corner, also being the Northeast corner of State Lease No. 19971 having Coordinates of X = 1,637,024.12 and Y = 315,065.71; thence along the boundary of said State Lease No. 19971 the following courses: West 450.11 feet and South 65 degrees 55 minutes 50 seconds West 3,471.20 feet to its Southwest corner, also being a point on the boundary of said State Lease No. 17156 having Coordinates of X = 1,633,404.62 and Y = 313,650.01; thence West 780.50 feet along the boundary of said State Lease No. 17156 to its Westernmost Northwest corner, also being a point on the West line of said Block 17 having Coordinates of X = 1,632,624.12 and Y = 313,650.01; thence North 3,932.81 feet along the West line of said Block 17 to the point of beginning, containing approximately **743.09 acres**, all as more particularly outlined on a plat on file in the Office of Mineral Resources, Department of Natural Resources. All bearings, distances and coordinates are based on Louisiana Coordinate System of 1927, (North or South Zone).

NOTE: The above description of the Tract nominated for lease has been provided and corrected, where required, exclusively by the nomination party. Any mineral lease selected from this Tract and awarded by the Louisiana State Mineral Board shall be without warranty of any kind, either express, implied, or statutory, including, but not limited to, the implied warranties of merchantability and fitness for a particular purpose. Should the mineral lease awarded by the Louisiana State Mineral

Board be subsequently modified, cancelled or abrogated due to the existence of conflicting leases, operating agreements, private claims or other future obligations or conditions which may affect all or any portion of the leased Tract, it shall not relieve the Lessee of the obligation to pay any bonus due thereon to the Louisiana State Mineral Board, nor shall the Louisiana State Mineral Board be obligated to refund any consideration paid by the Lessor prior to such modification, cancellation, or abrogation, including, but not limited to, bonuses, rentals and royalties.

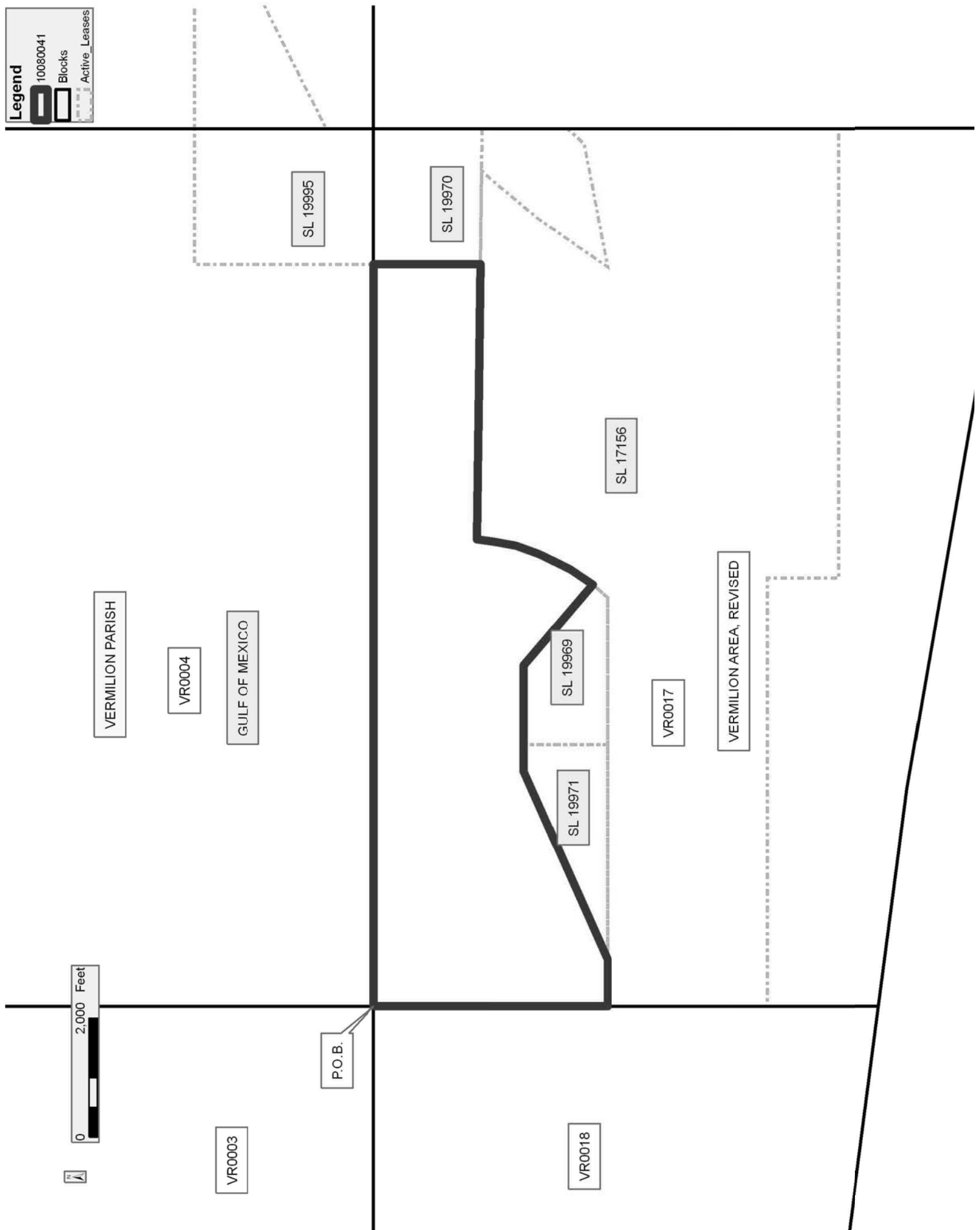
NOTE: The State of Louisiana does hereby reserve, and this lease shall be subject to, the imprescriptible right of surface use in the nature of a servitude in favor of the Department of Natural Resources, including its Offices and Commissions, for the sole purpose of implementing, constructing, servicing and maintaining approved coastal zone management and/or restoration projects. Utilization of any and all rights derived under this lease by the mineral lessee, its agents, successors or assigns, shall not interfere with nor hinder the reasonable surface use by the Department of Natural Resources, its Offices or Commissions, as herein above reserved.

Applicant: PATRICK L. DONOHUE PETROLEUM PROPERTIES, INC.

Bidder	Cash Payment	Price/Acre	Rental	Oil	Gas	Other

**Legend**

- 10080041
- Blocks
- Active Leases





**TRACT 41562 - Portion of Block 18, Vermilion Area, Revised, Vermilion Parish, Louisiana**

The beds and bottoms of all water bodies belonging to the State of Louisiana located in Block 18, Vermilion Area, Revised, together with any present lands formed by accretion to the shoreline or islands formed therein, located in Vermilion Parish, Louisiana, owned by and not presently under mineral lease as of August 11, 2010, from the State of Louisiana, the geographical area of which is more fully described as follows: Beginning at a point on the North line of Block 18, Vermilion Area, Revised having Coordinates of X = 1,618,600.00 and Y = 317,582.82; thence East 14,024.12 feet along the North line of said Block 18 to its Northeast corner having Coordinates of X = 1,632,624.12 and Y = 317,582.82; thence South 8,495.42 feet along the East line of said Block 18 to a point on the Three Mile Line, as decreed by the Supreme Court of the United States, as determined by a Special Master appointed therein, in litigation styled *United States v. State of Louisiana et al No. 9 Original*, in 1975, having Coordinates of X = 1,632,624.12 and Y = 309,087.40; thence Northwesterly on a straight line to a point having Coordinates of X = 1,627,130.00 and Y = 309,807.00; thence Northwesterly on a straight line to a point having Coordinates of X = 1,620,757.00 and Y = 310,390.00; thence Northwesterly on a curve having a radius of 18,240.60 and a center at X = 1,622,420.00 and Y = 328,555.00 to a point having Coordinates of X = 1,619,895.00 and Y = 310,490.00; thence Northwesterly on a straight line to a point having Coordinates of X = 1,618,600.00 and Y = 310,671.01; thence North 6,911.81 feet to the point of beginning, containing approximately **2,470.70 acres, LESS AND EXCEPT** that portion thereof, if any, lying seaward of the line three nautical miles from the coast line of Louisiana, as said three mile line has been decreed by the Supreme Court of the United States, as determined by a Special Master appointed therein, in litigation styled **United States v. State of Louisiana et al No. 9 Original**, in 1975, all as more particularly outlined on a plat in the Office of Mineral Resources, Department of Natural Resources. All bearings, distances and coordinates are based on the Louisiana Coordinate System of 1927, (South Zone).

NOTE: The above description of the Tract nominated for lease has been provided and corrected, where required, exclusively by the nomination party. Any mineral lease selected from this Tract and awarded by the Louisiana State Mineral Board shall be without warranty of any kind, either express, implied, or statutory, including, but not limited to, the implied warranties of merchantability and fitness for a particular purpose. Should the mineral lease awarded by the Louisiana State Mineral Board be subsequently modified, cancelled or abrogated due to the existence of conflicting leases, operating agreements, private claims or other future obligations or conditions which may affect all or any portion of the leased Tract, it shall not relieve the Lessee of the obligation to pay any bonus due thereon to the Louisiana State Mineral Board, nor shall the Louisiana State Mineral Board be obligated to refund any consideration

paid by the Lessor prior to such modification, cancellation, or abrogation, including, but not limited to, bonuses, rentals and royalties.

NOTE: The State of Louisiana does hereby reserve, and this lease shall be subject to, the imprescriptible right of surface use in the nature of a servitude in favor of the Department of Natural Resources, including its Offices and Commissions, for the sole purpose of implementing, constructing, servicing and maintaining approved coastal zone management and/or restoration projects. Utilization of any and all rights derived under this lease by the mineral lessee, its agents, successors or assigns, shall not interfere with nor hinder the reasonable surface use by the Department of Natural Resources, its Offices or Commissions, as herein above reserved.

Applicant: PATRICK L. DONOHUE PETROLEUM PROPERTIES, INC.

Bidder	Cash Payment	Price/Acre	Rental	Oil	Gas	Other

**Legend**

-  10080040
-  Blocks
-  Active Leases

VERMILION PARISH

VR0003

GULF OF MEXICO

VERMILION AREA, REVISED

VR0018

SL 17156

SL 20233

P.O.B.



**TRACT 41563 - Portion of Block 6, Vermilion Area, Revised, Vermilion Parish, Louisiana**

The beds and bottoms of all water bodies belonging to the State of Louisiana located in Block 6, Vermilion Area, Revised, together with any present lands formed by accretion to the shoreline or islands formed therein, located in Vermilion Parish, Louisiana, owned by and not presently under mineral lease as of August 11, 2010, from the State of Louisiana, the geographical area of which is more fully described as follows: Beginning at a point lying within Block 6, Vermilion Area, Revised, said point also located on the East boundary of State Lease No. 20230 having Coordinates of X = 1,669,519.25 and Y = 315,961.79; thence East 7,379.02 feet to a point on the East line of said Block 6 having Coordinates of X = 1,676,898.27 and Y = 315,961.79; thence South 4,937.02 feet along the East line of said Block 6 to its Southeast corner having Coordinates of X = 1,676,898.27 and Y = 311,024.77; thence West 7,379.02 feet along the South line of said Block 6 to the Southeast corner of said State Lease No. 20230 having Coordinates of X = 1,669,519.25 and Y = 311,024.77; thence North 4,937.02 feet along the East boundary of said State Lease No. 20230 to the point of beginning, containing approximately **836.33 acres**, all as more particularly outlined on a plat on file in the Office of Mineral Resources, Department of Natural Resources. All bearings, distances and coordinates are based on Louisiana Coordinate System of 1927, (North or South Zone).

NOTE: The above description of the Tract nominated for lease has been provided and corrected, where required, exclusively by the nomination party. Any mineral lease selected from this Tract and awarded by the Louisiana State Mineral Board shall be without warranty of any kind, either express, implied, or statutory, including, but not limited to, the implied warranties of merchantability and fitness for a particular purpose. Should the mineral lease awarded by the Louisiana State Mineral Board be subsequently modified, cancelled or abrogated due to the existence of conflicting leases, operating agreements, private claims or other future obligations or conditions which may affect all or any portion of the leased Tract, it shall not relieve the Lessee of the obligation to pay any bonus due thereon to the Louisiana State Mineral Board, nor shall the Louisiana State Mineral Board be obligated to refund any consideration paid by the Lessor prior to such modification, cancellation, or abrogation, including, but not limited to, bonuses, rentals and royalties.

NOTE: The State of Louisiana does hereby reserve, and this lease shall be subject to, the imprescriptible right of surface use in the nature of a servitude in favor of the Department of Natural Resources, including its Offices and Commissions, for the sole purpose of implementing, constructing, servicing and maintaining approved coastal zone management and/or restoration projects. Utilization of any and all rights derived under this lease by the mineral lessee, its agents, successors or assigns, shall not interfere with nor hinder the reasonable surface use by the

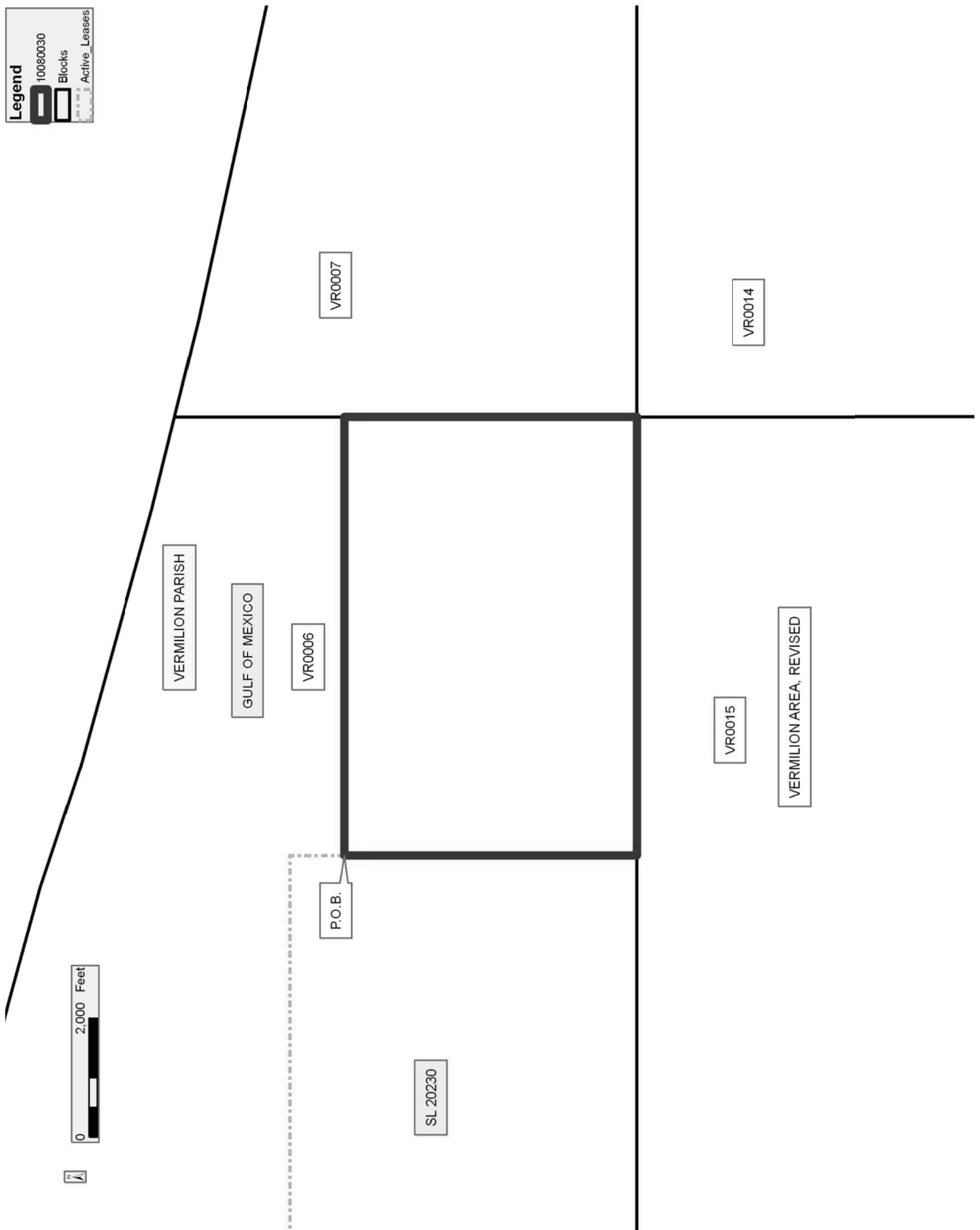
Department of Natural Resources, its Offices or Commissions, as herein above reserved.

Applicant: THEOPHILUS OIL, GAS & LAND SERVICES, LLC

Bidder	Cash Payment	Price/Acre	Rental	Oil	Gas	Other

**Legend**

- 10080030
- Blocks
- Active Leases



**TRACT 41564 - Portion of Block 56, West Delta Area, Plaquemines Parish, Louisiana**

The beds and bottoms of all water bodies belonging to the State of Louisiana located in Block 56, West Delta Area, together with any present lands formed by accretion to the shoreline or islands formed therein, located in Plaquemines Parish, Louisiana, owned by and not presently under mineral lease as of August 11, 2010, from the State of Louisiana, the geographical area of which is more fully described as follows: Beginning at the Southeast corner of State Lease No. 18448, also being a point on the East line of Block 56, West Delta Area, having Coordinates of X = 2,605,477.93 and Y = 136,764.86; thence South 4,589.89 feet along the East line of said Block 56 to a point having Coordinates of X = 2,605,477.93 and Y = 132,174.97; thence West 8,253.86 feet to a point on the Three Mile Line, as decreed by the Supreme Court of the United States, as determined by a Special Master appointed therein, in litigation styled *United States v. State of Louisiana et al No. 9 Original*, in 1975, having Coordinates of X = 2,597,224.07 and Y = 132,174.97; thence Northerly along said Three Mile Line to the Southwest corner of said State Lease No. 18448 having Coordinates of X = 2,597,221.35 and Y = 136,764.86; thence East 8,256.58 feet along the South boundary of said State Lease No. 18448 to the point of beginning, containing **869.85 acres, LESS AND EXCEPT** that portion thereof, if any, lying seaward of the line three nautical miles from the coast line of Louisiana, as said three mile line has been decreed by the Supreme Court of the United States, as determined by a Special Master appointed therein, in litigation styled **United States v. State of Louisiana et al No. 9 Original**, in 1975, all as more particularly outlined on a plat in the Office of Mineral Resources, Department of Natural Resources. All bearings, distances and coordinates are based on the Louisiana Coordinate System of 1927, (South Zone).

NOTE: The above description of the Tract nominated for lease has been provided and corrected, where required, exclusively by the nomination party. Any mineral lease selected from this Tract and awarded by the Louisiana State Mineral Board shall be without warranty of any kind, either express, implied, or statutory, including, but not limited to, the implied warranties of merchantability and fitness for a particular purpose. Should the mineral lease awarded by the Louisiana State Mineral Board be subsequently modified, cancelled or abrogated due to the existence of conflicting leases, operating agreements, private claims or other future obligations or conditions which may affect all or any portion of the leased Tract, it shall not relieve the Lessee of the obligation to pay any bonus due thereon to the Louisiana State Mineral Board, nor shall the Louisiana State Mineral Board be obligated to refund any consideration paid by the Lessor prior to such modification, cancellation, or abrogation, including, but not limited to, bonuses, rentals and royalties.

NOTE: The State of Louisiana does hereby reserve, and this lease shall be subject to, the imprescriptible right of surface use in the nature of a servitude in favor of the Department of Natural Resources, including its

Offices and Commissions, for the sole purpose of implementing, constructing, servicing and maintaining approved coastal zone management and/or restoration projects. Utilization of any and all rights derived under this lease by the mineral lessee, its agents, successors or assigns, shall not interfere with nor hinder the reasonable surface use by the Department of Natural Resources, its Offices or Commissions, as herein above reserved.

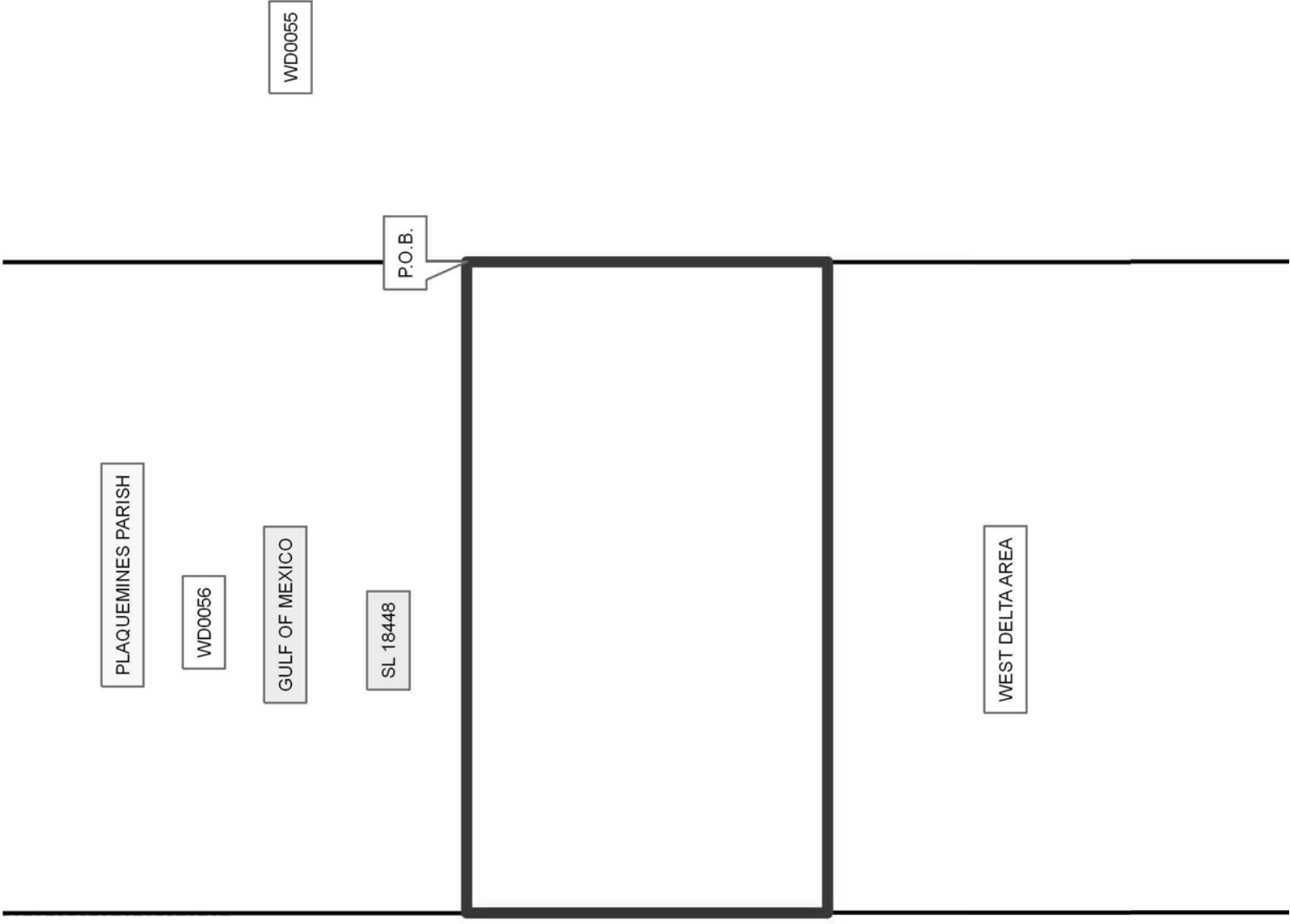
Applicant: ROBERT A. SCHROEDER, INC.

Bidder	Cash Payment	Price/Acre	Rental	Oil	Gas	Other



**Legend**

-  10080027
-  Blocks
-  Active Leases



**TRACT 41565 - Portion of Block 56, West Delta Area, Plaquemines Parish, Louisiana**

The beds and bottoms of all water bodies belonging to the State of Louisiana located in Block 56, West Delta Area, together with any present lands formed by accretion to the shoreline or islands formed therein, located in Plaquemines Parish, Louisiana, owned by and not presently under mineral lease as of August 11, 2010, from the State of Louisiana, the geographical area of which is more fully described as follows: Beginning at the Southeast corner of Block 56, West Delta Area, having Coordinates of X = 2,605,477.93 and Y = 123,834.20; thence West 8,248.91 feet along the South line of said Block 56 to a point on the Three Mile Line, as decreed by the Supreme Court of the United States, as determined by a Special Master appointed therein, in litigation styled *United States v. State of Louisiana et al No. 9 Original*, in 1975, having Coordinates of X = 2,597,229.02 and Y = 123,834.20; thence Northerly along said Three Mile Line to a point having Coordinates of X = 2,597,224.07 and Y = 132,174.97; thence East 8,253.86 feet to a point on the East line of said Block 56 having Coordinates of X = 2,605,477.93 and Y = 132,174.97; thence South 8,340.77 feet along the East line of said Block 56 to the point of beginning, containing **1,579.96 acres, LESS AND EXCEPT** that portion thereof, if any, lying seaward of the line three nautical miles from the coast line of Louisiana, as said three mile line has been decreed by the Supreme Court of the United States, as determined by a Special Master appointed therein, in litigation styled **United States v. State of Louisiana et al No. 9 Original**, in 1975, all as more particularly outlined on a plat in the Office of Mineral Resources, Department of Natural Resources. All bearings, distances and coordinates are based on the Louisiana Coordinate System of 1927, (South Zone).

NOTE: The above description of the Tract nominated for lease has been provided and corrected, where required, exclusively by the nomination party. Any mineral lease selected from this Tract and awarded by the Louisiana State Mineral Board shall be without warranty of any kind, either express, implied, or statutory, including, but not limited to, the implied warranties of merchantability and fitness for a particular purpose. Should the mineral lease awarded by the Louisiana State Mineral Board be subsequently modified, cancelled or abrogated due to the existence of conflicting leases, operating agreements, private claims or other future obligations or conditions which may affect all or any portion of the leased Tract, it shall not relieve the Lessee of the obligation to pay any bonus due thereon to the Louisiana State Mineral Board, nor shall the Louisiana State Mineral Board be obligated to refund any consideration paid by the Lessor prior to such modification, cancellation, or abrogation, including, but not limited to, bonuses, rentals and royalties.

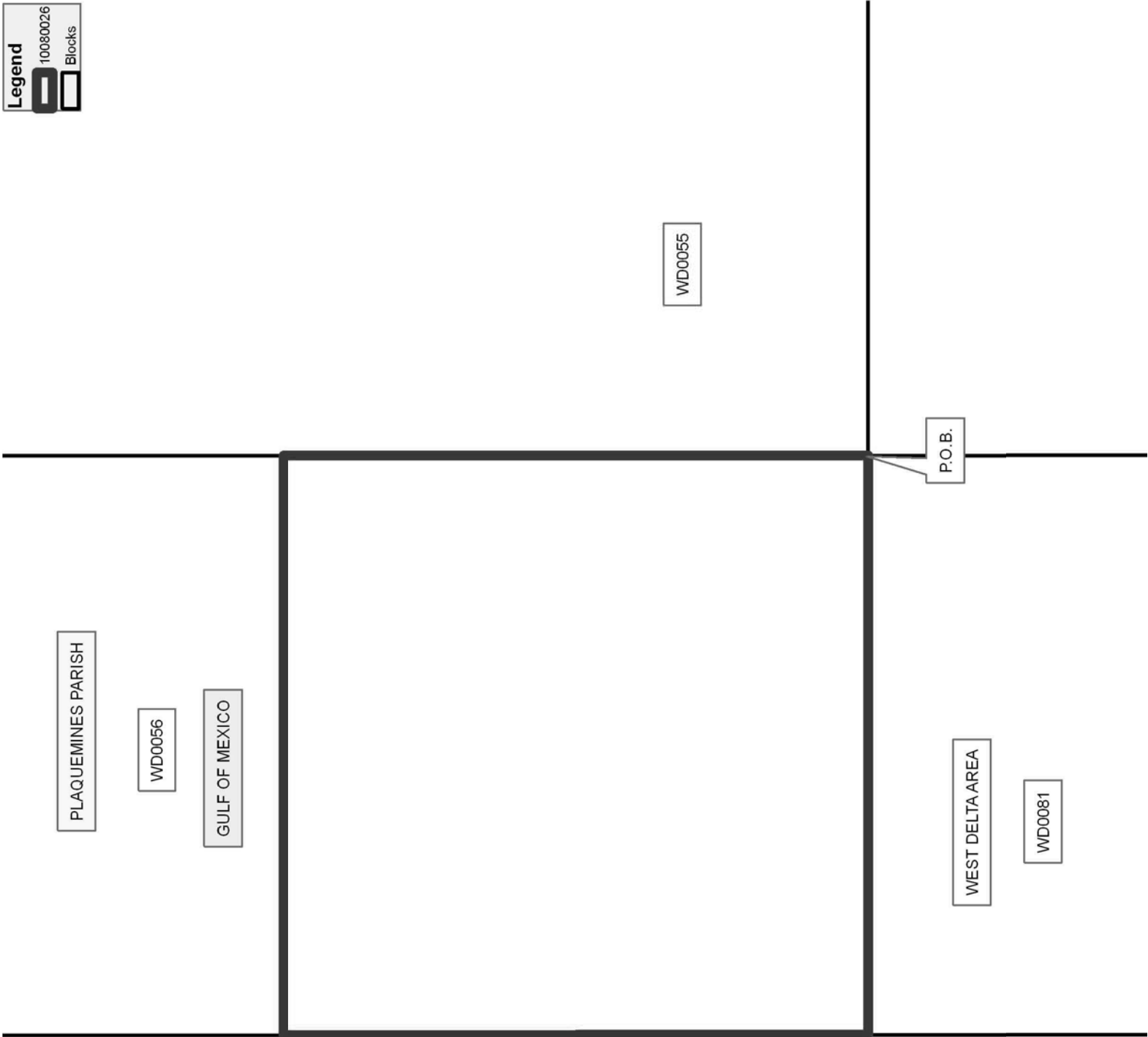
NOTE: The State of Louisiana does hereby reserve, and this lease shall be subject to, the imprescriptible right of surface use in the nature of a servitude in favor of the Department of Natural Resources, including its Offices and Commissions, for the sole purpose of implementing,

constructing, servicing and maintaining approved coastal zone management and/or restoration projects. Utilization of any and all rights derived under this lease by the mineral lessee, its agents, successors or assigns, shall not interfere with nor hinder the reasonable surface use by the Department of Natural Resources, its Offices or Commissions, as herein above reserved.

Applicant: ROBERT A. SCHROEDER, INC.

Bidder	Cash Payment	Price/Acre	Rental	Oil	Gas	Other

Legend  
10080026  
Blocks



0 2,000 Feet

**TRACT 41566 - Portion of Block 55, West Delta Area, Plaquemines Parish, Louisiana**

The beds and bottoms of all water bodies belonging to the State of Louisiana located in Block 55, West Delta Area, together with any present lands formed by accretion to the shoreline or islands formed therein, located in Plaquemines Parish, Louisiana, owned by and not presently under mineral lease as of August 11, 2010, from the State of Louisiana, the geographical area of which is more fully described as follows: Beginning at the Southwest corner of Block 55, West Delta Area, having Coordinates of X = 2,605,477.93 and Y = 123,834.20; thence North 8,340.77 feet along the West line of said Block 55 to a point having Coordinates of X = 2,605,477.93 and Y = 132,174.97; thence East 9,986.66 feet to a point on the Louisiana Coastline, as decreed by the Supreme Court of the United States, as determined by a Special Master appointed therein, in litigation styled *United States v. State of Louisiana et al No. 9 Original*, in 1975, having Coordinates of X = 2,615,464.59 and Y = 132,174.97; thence Southerly along said Louisiana Coastline to a point of intersection with the South line of said Block 55 having Coordinates of X = 2,615,469.34 and Y = 123,834.20; thence West 9,991.41 feet along the South line of said Block 55 to the point of beginning, containing **1,912.68 acres**, all as more particularly outlined on a plat on file in the Office of Mineral Resources, Department of Natural Resources. All bearings, distances and coordinates are based on Louisiana Coordinate System of 1927, (North or South Zone).

NOTE: The above description of the Tract nominated for lease has been provided and corrected, where required, exclusively by the nomination party. Any mineral lease selected from this Tract and awarded by the Louisiana State Mineral Board shall be without warranty of any kind, either express, implied, or statutory, including, but not limited to, the implied warranties of merchantability and fitness for a particular purpose. Should the mineral lease awarded by the Louisiana State Mineral Board be subsequently modified, cancelled or abrogated due to the existence of conflicting leases, operating agreements, private claims or other future obligations or conditions which may affect all or any portion of the leased Tract, it shall not relieve the Lessee of the obligation to pay any bonus due thereon to the Louisiana State Mineral Board, nor shall the Louisiana State Mineral Board be obligated to refund any consideration paid by the Lessor prior to such modification, cancellation, or abrogation, including, but not limited to, bonuses, rentals and royalties.

NOTE: The State of Louisiana does hereby reserve, and this lease shall be subject to, the imprescriptible right of surface use in the nature of a servitude in favor of the Department of Natural Resources, including its Offices and Commissions, for the sole purpose of implementing, constructing, servicing and maintaining approved coastal zone management and/or restoration projects. Utilization of any and all rights derived under this lease by the mineral lessee, its agents, successors or assigns, shall not interfere with nor hinder the reasonable surface use by the

Department of Natural Resources, its Offices or Commissions, as herein above reserved.

Applicant: ROBERT A. SCHROEDER, INC.

Bidder	Cash Payment	Price/Acre	Rental	Oil	Gas	Other

**Legend**  
10080025  
Blocks



PLAQUEMINES PARISH

GULF OF MEXICO

WD0055

WEST DELTA AREA

WD0082

P.O.B.