

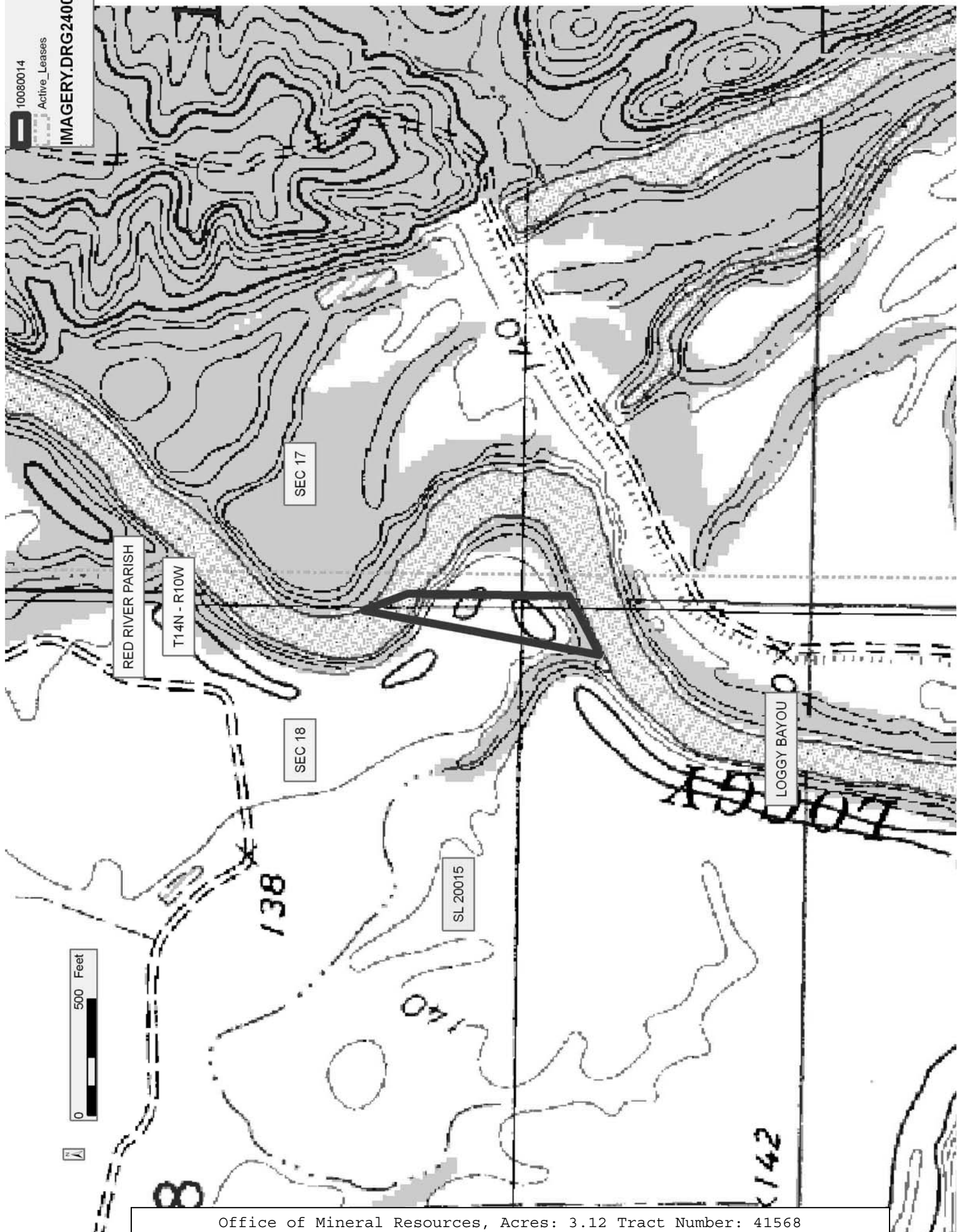
TRACT 41568 - Red River Parish, Louisiana

All lands, including lands now or formerly constituting the beds and bottoms of all water bodies of every nature and description, owned by and not presently under mineral lease as of August 11, 2010 from the State of Louisiana, situated in Red River Parish, Louisiana, and being more fully described as follows: Lot 13 of Section 18, Township 14 North, Range 10 West, Red River Parish, Louisiana, **LESS AND EXCEPT** that portion, if any, of the above described tract which may be claimed under State Lease No. 20015; the above described tract containing approximately **3.12 acres**, all as more particularly outlined on a plat on file in the Office of Mineral Resources, Department of Natural Resources. All bearings, distances and coordinates are based on Louisiana Coordinate System of 1927, (North or South Zone), where applicable.

NOTE: The above description of the Tract nominated for lease has been provided and corrected, where required, exclusively by the nomination party. Any mineral lease selected from this Tract and awarded by the Louisiana State Mineral Board shall be without warranty of any kind, either express, implied, or statutory, including, but not limited to, the implied warranties of merchantability and fitness for a particular purpose. Should the mineral lease awarded by the Louisiana State Mineral Board be subsequently modified, cancelled or abrogated due to the existence of conflicting leases, operating agreements, private claims or other future obligations or conditions which may affect all or any portion of the leased Tract, it shall not relieve the Lessee of the obligation to pay any bonus due thereon to the Louisiana State Mineral Board, nor shall the Louisiana State Mineral Board be obligated to refund any consideration paid by the Lessor prior to such modification, cancellation, or abrogation, including, but not limited to, bonuses, rentals and royalties.

Applicant: CHAPPELL OIL & GAS

| Bidder | Cash Payment | Price/Acre | Rental | Oil | Gas | Other |
|--------|--------------|------------|--------|-----|-----|-------|
| | | | | | | |
| | | | | | | |
| | | | | | | |
| | | | | | | |



TRACT 41569 - Natchitoches and Red River Parishes, Louisiana

All of the lands now or formerly constituting the beds and bottoms of all water bodies of every nature and description the title of which vests in the State of Louisiana, together with all islands arising therein and other lands formed by accretion or by reliction, where allowed by law, excepting tax adjudicated lands, and not presently under mineral lease on August 11, 2010, situated in Natchitoches and Red River Parishes, Louisiana, and more particularly described as follows: Beginning at a point having Coordinates of X = 1,757,200.00 and Y = 444,355.00; thence West 12,700.00 feet to a point having Coordinates of X = 1,744,500.00 and Y = 444,355.00; thence North approximately 15,255 feet to a point on the Southern boundary of State Lease No. 6003 having a Coordinate of X = 1,744,500.00; thence along the boundary of said State Lease No. 6003 the following courses: Southeasterly approximately 4,363 feet and Northeasterly approximately 603 feet; thence East approximately 8,322 feet to a point of intersection on a North-South line having Coordinates of X = 1,757,200.00 and Y = 460,110.00; thence South 15,755.00 feet to the Point of Beginning, **LESS AND EXCEPT** that portion, if any, of State Lease No. 6003 that may lie within the above described tract containing approximately **173 acres**, all as more particularly outlined on a plat on file in the Office of Mineral Resources, Department of Natural Resources. All bearings, distances and coordinates are based on Louisiana Coordinate System of 1927, (North or South Zone), where applicable.

NOTE: The above description of the Tract nominated for lease has been provided and corrected, where required, exclusively by the nomination party. Any mineral lease selected from this Tract and awarded by the Louisiana State Mineral Board shall be without warranty of any kind, either express, implied, or statutory, including, but not limited to, the implied warranties of merchantability and fitness for a particular purpose. Should the mineral lease awarded by the Louisiana State Mineral Board be subsequently modified, cancelled or abrogated due to the existence of conflicting leases, operating agreements, private claims or other future obligations or conditions which may affect all or any portion of the leased Tract, it shall not relieve the Lessee of the obligation to pay any bonus due thereon to the Louisiana State Mineral Board, nor shall the Louisiana State Mineral Board be obligated to refund any consideration paid by the Lessor prior to such modification, cancellation, or abrogation, including, but not limited to, bonuses, rentals and royalties.

Applicant: TATUM OIL & GAS

| Bidder | Cash Payment | Price/Acre | Rental | Oil | Gas | Other |
|--------|--------------|------------|--------|-----|-----|-------|
| | | | | | | |
| | | | | | | |
| | | | | | | |
| | | | | | | |

Legend

10080016

Active_Leases

Counties

IMAGERY.DOQQ_2004_1M

0 3,000 Feet



RED RIVER PARISH

SL 6003

RED RIVER

BAYOU PIERRE

NATCHITOCHE PARISH

P.O.B.

TRACT 41570 - Natchitoches and Red River Parishes, Louisiana

All of the lands now or formerly constituting the beds and bottoms of all water bodies of every nature and description the title of which vests in the State of Louisiana, together with all islands arising therein and other lands formed by accretion or by reliction, where allowed by law, excepting tax adjudicated lands, and not presently under mineral lease on August 11, 2010, situated in Natchitoches and Red River Parishes, Louisiana, and more particularly described as follows: Beginning at a point having Coordinates of X = 1,757,200.00 and Y = 444,355.00; thence North 15,755.00 feet to a point having Coordinates of X = 1,757,200.00 and Y = 460,110.00; thence East 13,430.00 feet to a point having Coordinates of X = 1,770,630.00 and Y = 460,110.00; thence South 15,755.00 feet to a point having Coordinates of X = 1,770,630.00 and Y = 444,355.00; thence West 13,430.00 feet to the Point of Beginning containing approximately **261 acres**, all as more particularly outlined on a plat on file in the Office of Mineral Resources, Department of Natural Resources. All bearings, distances and coordinates are based on Louisiana Coordinate System of 1927, (North or South Zone), where applicable.

NOTE: The above description of the Tract nominated for lease has been provided and corrected, where required, exclusively by the nomination party. Any mineral lease selected from this Tract and awarded by the Louisiana State Mineral Board shall be without warranty of any kind, either express, implied, or statutory, including, but not limited to, the implied warranties of merchantability and fitness for a particular purpose. Should the mineral lease awarded by the Louisiana State Mineral Board be subsequently modified, cancelled or abrogated due to the existence of conflicting leases, operating agreements, private claims or other future obligations or conditions which may affect all or any portion of the leased Tract, it shall not relieve the Lessee of the obligation to pay any bonus due thereon to the Louisiana State Mineral Board, nor shall the Louisiana State Mineral Board be obligated to refund any consideration paid by the Lessor prior to such modification, cancellation, or abrogation, including, but not limited to, bonuses, rentals and royalties.

Applicant: TATUM OIL & GAS

| Bidder | Cash Payment | Price/Acre | Rental | Oil | Gas | Other |
|--------|--------------|------------|--------|-----|-----|-------|
| | | | | | | |
| | | | | | | |
| | | | | | | |
| | | | | | | |

Legend

10080015

IMAGERY.DOQQ_2004_1M

RED RIVER PARISH

T11N - R9W

RED RIVER

T10N - R8W

NATCHITOCHE PARISH

P.O.B.

0 3,000 Feet

TRACT 41571 - Sabine Parish, Louisiana

All of the lands now or formerly constituting the beds and bottoms of all water bodies of every nature and description the title of which vests in the State of Louisiana, together with all islands arising therein and other lands formed by accretion or by reliction, where allowed by law, excepting tax adjudicated lands, and not presently under mineral lease on August 11, 2010, situated in Sabine Parish, Louisiana, and more particularly described as follows: Beginning at a point having Coordinates of X = 1,638,762.79 and Y = 362,182.02; thence South 84 degrees 26 minutes 17 seconds East 5,288.20 feet to a point having Coordinates of X = 1,644,026.09 and Y = 361,669.47; thence South 00 degrees 51 minutes 41 seconds West 5,376.92 feet to a point having Coordinates of X = 1,643,945.25 and Y = 356,293.16; thence North 87 degrees 12 minutes 48 seconds West 5,222.42 feet to a point having Coordinates of X = 1,638,729.00 and Y = 356,547.07; thence North 00 degrees 20 minutes 37 seconds East 5,635.05 feet to the point of beginning, containing approximately **15 acres**, all as more particularly outlined on a plat on file in the Office of Mineral Resources, Department of Natural Resources. All bearings, distances and coordinates are based on Louisiana Coordinate System of 1927, (North or South Zone), where applicable.

NOTE: The above description of the Tract nominated for lease has been provided and corrected, where required, exclusively by the nomination party. Any mineral lease selected from this Tract and awarded by the Louisiana State Mineral Board shall be without warranty of any kind, either express, implied, or statutory, including, but not limited to, the implied warranties of merchantability and fitness for a particular purpose. Should the mineral lease awarded by the Louisiana State Mineral Board be subsequently modified, cancelled or abrogated due to the existence of conflicting leases, operating agreements, private claims or other future obligations or conditions which may affect all or any portion of the leased Tract, it shall not relieve the Lessee of the obligation to pay any bonus due thereon to the Louisiana State Mineral Board, nor shall the Louisiana State Mineral Board be obligated to refund any consideration paid by the Lessor prior to such modification, cancellation, or abrogation, including, but not limited to, bonuses, rentals and royalties.

| Bidder | Cash Payment | Price/Acre | Rental | Oil | Gas | Other |
|--------|--------------|------------|--------|-----|-----|-------|
| | | | | | | |
| | | | | | | |
| | | | | | | |
| | | | | | | |

Applicant: JCS RESOURCES, L.L.C.

Legend

10080005

IMAGERY.DOQQ_2004_1M

0 2,000 Feet

SABINE PARISH

T8N - R13W

T8N - R12W

P.O.B.

BAYOU SAN MIGUEL

TRACT 41572 - Sabine Parish, Louisiana

All of the lands now or formerly constituting the beds and bottoms of all water bodies of every nature and description the title of which vests in the State of Louisiana, together with all islands arising therein and other lands formed by accretion or by reliction, where allowed by law, excepting tax adjudicated lands, and not presently under mineral lease on August 11, 2010, situated in Sabine Parish, Louisiana, and more particularly described as follows: Beginning at a point having Coordinates of X = 1,633,421.52 and Y = 356,702.16; thence South 88 degrees 19 minutes 34 seconds East 5,309.75 feet to a point having Coordinates of X = 1,638,729.00 and Y = 356,547.07; thence South 00 degrees 25 minutes 00 seconds West 5,517.70 feet to a point having Coordinates of X = 1,638,688.88 and Y = 351,029.51; thence North 88 degrees 35 minutes 44 seconds West 5,310.21 feet to a point having Coordinates of X = 1,633,380.26 and Y = 351,159.66; thence North 00 degrees 25 minutes 36 seconds East 5,542.65 feet to the point of beginning, containing approximately **10 acres**, all as more particularly outlined on a plat on file in the Office of Mineral Resources, Department of Natural Resources. All bearings, distances and coordinates are based on Louisiana Coordinate System of 1927, (North or South Zone), where applicable.

NOTE: The above description of the Tract nominated for lease has been provided and corrected, where required, exclusively by the nomination party. Any mineral lease selected from this Tract and awarded by the Louisiana State Mineral Board shall be without warranty of any kind, either express, implied, or statutory, including, but not limited to, the implied warranties of merchantability and fitness for a particular purpose. Should the mineral lease awarded by the Louisiana State Mineral Board be subsequently modified, cancelled or abrogated due to the existence of conflicting leases, operating agreements, private claims or other future obligations or conditions which may affect all or any portion of the leased Tract, it shall not relieve the Lessee of the obligation to pay any bonus due thereon to the Louisiana State Mineral Board, nor shall the Louisiana State Mineral Board be obligated to refund any consideration paid by the Lessor prior to such modification, cancellation, or abrogation, including, but not limited to, bonuses, rentals and royalties.

| Bidder | Cash Payment | Price/Acre | Rental | Oil | Gas | Other |
|--------|--------------|------------|--------|-----|-----|-------|
| | | | | | | |
| | | | | | | |
| | | | | | | |
| | | | | | | |

Applicant: JCS RESOURCES, L.L.C.

Legend

10080006

IMAGERY.DOQQ_2004_1M

SABINE PARISH

T8N - R13W

T7N - R13W

P.O.B.

0 2,000 Feet

TRACT 41573 - Sabine Parish, Louisiana

All of the lands now or formerly constituting the beds and bottoms of all water bodies of every nature and description the title of which vests in the State of Louisiana, together with all islands arising therein and other lands formed by accretion or by reliction, where allowed by law, excepting tax adjudicated lands, and not presently under mineral lease on August 11, 2010, situated in Sabine Parish, Louisiana, and more particularly described as follows: Beginning at a point having Coordinates of X = 1,638,729.00 and Y = 356,547.07; thence South 87 degrees 12 minutes 48 seconds East 5,222.42 feet to a point having Coordinates of X = 1,643,945.25 and Y = 356,293.16; thence South 01 degrees 18 minutes 40 seconds West 5,393.86 feet to a point having Coordinates of X = 1,643,821.83 and Y = 350,900.71; thence North 88 degrees 33 minutes 45 seconds West 5,134.56 feet to a point having Coordinates of X = 1,638,688.88 and Y = 351,029.51; thence North 00 degrees 25 minutes 00 seconds East 5,517.70 feet to the point of beginning, containing approximately **12 acres**, all as more particularly outlined on a plat on file in the Office of Mineral Resources, Department of Natural Resources. All bearings, distances and coordinates are based on Louisiana Coordinate System of 1927, (North or South Zone), where applicable.

NOTE: The above description of the Tract nominated for lease has been provided and corrected, where required, exclusively by the nomination party. Any mineral lease selected from this Tract and awarded by the Louisiana State Mineral Board shall be without warranty of any kind, either express, implied, or statutory, including, but not limited to, the implied warranties of merchantability and fitness for a particular purpose. Should the mineral lease awarded by the Louisiana State Mineral Board be subsequently modified, cancelled or abrogated due to the existence of conflicting leases, operating agreements, private claims or other future obligations or conditions which may affect all or any portion of the leased Tract, it shall not relieve the Lessee of the obligation to pay any bonus due thereon to the Louisiana State Mineral Board, nor shall the Louisiana State Mineral Board be obligated to refund any consideration paid by the Lessor prior to such modification, cancellation, or abrogation, including, but not limited to, bonuses, rentals and royalties.

| Bidder | Cash Payment | Price/Acre | Rental | Oil | Gas | Other |
|--------|--------------|------------|--------|-----|-----|-------|
| | | | | | | |
| | | | | | | |
| | | | | | | |
| | | | | | | |

Applicant: JCS RESOURCES, L.L.C.

Legend

10080007

IMAGERY.DOQQ_2004_1M

SABINE PARISH

T8N - R13W

BAYOU SAN MIGUEL

P.O.B.

T7N - R13W

0 2,000 Feet

TRACT 41574 - Lasalle Parish, Louisiana

All of the lands now or formerly constituting the beds and bottoms of all water bodies of every nature and description the title of which vests in the State of Louisiana, together with all islands arising therein and other lands formed by accretion or by reliction, where allowed by law, excepting tax adjudicated lands, and not presently under mineral lease on August 11, 2010, situated in Lasalle Parish, Louisiana, and more particularly described as follows: Beginning at an East corner of State Lease No. 19858 having Coordinates of X = 2,124,384.10 and Y = 307,834.83; thence along the boundary of said State Lease No. 19858 the following courses: North 1,097.13 feet to a point having Coordinates of X = 2,124,384.10 and Y = 308,931.95; East 1,349.10 feet to a point having Coordinates of X = 2,125,733.19 and Y = 308,931.95 and Northerly approximately 1,579 feet to the Southeast corner of a Northern retained portion of State Lease No. 1461, as amended; thence Easterly approximately 1,157 feet to a point having Coordinates of X = 2,126,890.25 and Y = 310,511.07; thence North 2,608.93 feet to a point having Coordinates of X = 2,126,890.25 and Y = 313,120.00; thence East 1,980.00 feet to the Southwest corner of State Lease No. 19853 having Coordinates of X = 2,128,870.25 and Y = 313,120.00; thence East 1,980.00 feet along the South boundary of said State Lease No. 19853 to its Southeast corner, also being a point on the West boundary of State Lease No. 19855 having Coordinates of X = 2,130,850.25 and Y = 313,120.00; thence along the boundary of said State Lease No. 19855 the following courses: South 2,640.00 feet to a point having Coordinates of X = 2,130,850.25 and Y = 310,480.00 and East 2,926.75 feet to a point having Coordinates of X = 2,133,777.00 and Y = 310,480.00; thence South 2,214.07 feet to a point having Coordinates of X = 2,133,777.00 and Y = 308,265.93; thence South 62 degrees 34 minutes 11 seconds West 2,191.88 feet to a point having Coordinates of X = 2,131,831.55 and Y = 307,256.20; thence Southwesterly, on a straight line, approximately 4,177 feet to the Southeast corner of a portion of State Lease No. 1462, as amended; thence along the boundary of said State Lease No. 1462 the following: Northerly and Westerly to its Northwest corner, also being a point on the East boundary of State Lease No. 19925; thence along the boundary of said State Lease No. 19925 the following courses: Northerly approximately 1,399 feet to a point having Coordinates of X = 2,126,890.25 and Y = 307,840.00 and South 45 degrees 10 minutes 27 seconds West 3,839.12 feet to its Southwest corner having Coordinates of X = 2,124,167.35 and Y = 305,133.60; thence North 2,701.22 feet to a point on the South boundary of said State Lease No. 19858 having Coordinates of X = 2,124,167.35 and Y = 307,834.83; thence East 216.75 feet along the South boundary of said State Lease No. 19858 to the point of beginning, **LESS AND EXCEPT** that portion, if any, State Lease No. 1462, as amended, that may lie within the above described tract, containing approximately **771 acres**, all as more particularly outlined on a plat on file in the Office of Mineral Resources, Department of Natural Resources. All bearings, distances and coordinates are based on Louisiana Coordinate System of 1927, (North or South Zone), where applicable.

NOTE: The above description of the Tract nominated for lease has been provided and corrected, where required, exclusively by the nomination party. Any mineral lease selected from this Tract and awarded by the Louisiana State Mineral Board shall be without warranty of any kind, either express, implied, or statutory, including, but not limited to, the implied warranties of merchantability and fitness for a particular purpose. Should the mineral lease awarded by the Louisiana State Mineral Board be subsequently modified, cancelled or abrogated due to the existence of conflicting leases, operating agreements, private claims or other future obligations or conditions which may affect all or any portion of the leased Tract, it shall not relieve the Lessee of the obligation to pay any bonus due thereon to the Louisiana State Mineral Board, nor shall the Louisiana State Mineral Board be obligated to refund any consideration paid by the Lessor prior to such modification, cancellation, or abrogation, including, but not limited to, bonuses, rentals and royalties.

Applicant: LESLIE M. COOPER

| Bidder | Cash Payment | Price/Acre | Rental | Oil | Gas | Other |
|--------|--------------|------------|--------|-----|-----|-------|
| | | | | | | |
| | | | | | | |
| | | | | | | |
| | | | | | | |

10080011

Active_Leases

IMAGERY.DOQQ_2004_11



0 2,000 Feet

LA SALLE PARISH

CATAHOULA LAKE

FRENCH FORK LITTLE RIVER

SL 19853

SL 19855

T6N - R4E

SL 1461

SL 1462

SL 19925

SL 19858

P.O.B.

TRACT 41575 - Calcasieu Parish, Louisiana

All of the lands now or formerly constituting the beds and bottoms of all water bodies of every nature and description the title of which vests in the State of Louisiana, together with all islands arising therein and other lands formed by accretion or by reliction, where allowed by law, excepting tax adjudicated lands, and not presently under mineral lease on August 11, 2010, situated in Calcasieu Parish, Louisiana, and more particularly described as follows: Beginning at a point having Coordinates of X = 1,428,522.93 and Y = 594,148.93; thence North 861.79 feet to the Southwest corner of State Lease No. 18560, as amended, having Coordinates of X = 1,428,522.93 and Y = 595,010.72; thence along the boundary of said State Lease No. 18560, as amended, the following courses: North 86 degrees 50 minutes 14 seconds East 40.44 feet to a point having Coordinates of X = 1,428,563.31 and Y = 595,012.96; Along a curve to the left having a chord bearing of North 73 degrees 01 minutes 45 seconds East 881.23 feet, having a radius of 1,714.35 feet and an arc length of 891.23 feet to a point having Coordinates of X = 1,429,406.16 and Y = 595,270.17; North 00 degrees 57 minutes 52 seconds East 412.14 feet to a point having Coordinates of X = 1,429,413.10 and Y = 595,682.25; North 76 degrees 16 minutes 52 seconds East 164.50 feet to a point having Coordinates of X = 1,429,572.91 and Y = 595,721.27, and North 33 degrees 22 minutes 49 seconds East 259.05 feet to a point having Coordinates of X = 1,429,715.43 and Y = 595,937.58; thence East 530.51 feet to a point the West line of State Lease No. 20261 having Coordinates of X = 1,430,245.95 and Y = 595,937.58; thence South 793.12 feet along the West line of said State Lease No. 20261 to the Northeast corner of said State Lease No. 18560, as amended, having Coordinates of X = 1,430,245.95 and Y = 595,144.47; thence along the boundary of said State Lease No. 18560, as amended, the following courses: South 83 degrees 45 minutes 55 seconds West 399.65 feet to a point having Coordinates of X = 1,429,848.66 and Y = 595,101.06; South 05 degrees 22 minutes 46 seconds West 113.75 feet to a point having Coordinates of X = 1,429,838.00 and Y = 594,987.82, and South 12 degrees 00 minutes 25 seconds East 218.26 feet to its Southwest corner, said corner also being a point on the North line of State Lease No. 18593, having Coordinates of X = 1,429,883.40 and Y = 594,774.33; thence along boundary of said State Lease No. 18593 the following courses: West 237.35 feet to a point having Coordinates of X = 1,429,646.05 and Y = 594,774.33 and South 625.40 feet to its Southwest corner having Coordinates of X = 1,429,646.05 and Y = 594,148.93; thence West 1,123.12 feet to the Point of Beginning, containing approximately **13 acres**, all as more particularly outlined on a plat on file in the Office of Mineral Resources, Department of Natural Resources. All bearings, distances and coordinates are based on Louisiana Coordinate System of 1927, (North or South Zone), where applicable.

NOTE: The above description of the Tract nominated for lease has been provided and corrected, where required, exclusively by the nomination party. Any mineral lease selected from this Tract and awarded by the Louisiana State Mineral Board shall be without warranty of any kind,

either express, implied, or statutory, including, but not limited to, the implied warranties of merchantability and fitness for a particular purpose. Should the mineral lease awarded by the Louisiana State Mineral Board be subsequently modified, cancelled or abrogated due to the existence of conflicting leases, operating agreements, private claims or other future obligations or conditions which may affect all or any portion of the leased Tract, it shall not relieve the Lessee of the obligation to pay any bonus due thereon to the Louisiana State Mineral Board, nor shall the Louisiana State Mineral Board be obligated to refund any consideration paid by the Lessor prior to such modification, cancellation, or abrogation, including, but not limited to, bonuses, rentals and royalties.

Applicant: TORO INVESTMENT COMPANY

| Bidder | Cash Payment | Price/Acre | Rental | Oil | Gas | Other |
|--------|--------------|------------|--------|-----|-----|-------|
| | | | | | | |
| | | | | | | |
| | | | | | | |
| | | | | | | |

Legend

10080017

Active Leases

IMAGERY.DOQQ_2008_1M_CIR

0 1,000 Feet

CALCASIEU PARISH

T9S - R8W

SL 20261

SL 18560

SL 18593

SL 18560

CALCASIEU RIVER

P.O.B.

TRACT 41576 - Calcasieu Parish, Louisiana

All of the lands now or formerly constituting the beds and bottoms of all water bodies of every nature and description the title of which vests in the State of Louisiana, together with all islands arising therein and other lands formed by accretion or by reliction, where allowed by law, excepting tax adjudicated lands, and not presently under mineral lease on August 11, 2010, situated in Calcasieu Parish, Louisiana, and more particularly described as follows: Beginning at a point having Coordinates of X = 1,428,522.93 and Y = 594,148.93; thence East 1,123.12 feet to the Southwest corner of State Lease No. 18593 having Coordinates of X = 1,429,646.05 and Y = 594,148.93; thence North 83 degrees 45 minutes 55 seconds East 2,214.39 feet along the South boundary of said State Lease No. 18593 to its Southeast corner having Coordinates of X = 1,431,847.34 and Y = 594,389.42; thence South 1,189.42 feet to a point having Coordinates of X = 1,431,847.34 and Y = 593,200.00; thence West 3,324.41 feet to a point having Coordinates of X = 1,428,522.93 and Y = 593,200.00; thence North 948.93 feet to the Point of Beginning, containing approximately **9 acres**, all as more particularly outlined on a plat on file in the Office of Mineral Resources, Department of Natural Resources. All bearings, distances and coordinates are based on Louisiana Coordinate System of 1927, (North or South Zone), where applicable.

NOTE: The above description of the Tract nominated for lease has been provided and corrected, where required, exclusively by the nomination party. Any mineral lease selected from this Tract and awarded by the Louisiana State Mineral Board shall be without warranty of any kind, either express, implied, or statutory, including, but not limited to, the implied warranties of merchantability and fitness for a particular purpose. Should the mineral lease awarded by the Louisiana State Mineral Board be subsequently modified, cancelled or abrogated due to the existence of conflicting leases, operating agreements, private claims or other future obligations or conditions which may affect all or any portion of the leased Tract, it shall not relieve the Lessee of the obligation to pay any bonus due thereon to the Louisiana State Mineral Board, nor shall the Louisiana State Mineral Board be obligated to refund any consideration paid by the Lessor prior to such modification, cancellation, or abrogation, including, but not limited to, bonuses, rentals and royalties.

| Bidder | Cash Payment | Price/Acre | Rental | Oil | Gas | Other |
|--------|--------------|------------|--------|-----|-----|-------|
| | | | | | | |
| | | | | | | |
| | | | | | | |
| | | | | | | |

Applicant: TORO INVESTMENT COMPANY

Legend

10080018

Active_Leases

IMAGERY.DOQQ_2008_1M_CIR

CALCASIEU PARISH

T9S - R8W

T9S - R7W

SL 18593

CALCASIEU RIVER

P.O.B.

0 1,000 Feet

TRACT 41577 - Iberville Parish, Louisiana

All of the lands now or formerly constituting the beds and bottoms of all water bodies of every nature and description the title of which vests in the State of Louisiana, together with all islands arising therein and other lands formed by accretion or by reliction, where allowed by law, excepting tax adjudicated lands, and not presently under mineral lease on August 11, 2010, situated in Iberville Parish, Louisiana, and more particularly described as follows: Beginning at a point having Coordinates of X = 2,062,500.00 and Y = 547,860.00; thence North 89 degrees 59 minutes 42 seconds West 8,039.67 feet to a point having Coordinates of X = 2,054,460.33 and Y = 547,860.71; thence North 2,752.37 feet to a point having Coordinates of X = 2,054,460.33 and Y = 550,613.08; thence Northeasterly, on a straight line, approximately 549 feet to the Southernmost point of State Lease No. 14721, as amended; thence North 40 degrees 22 minutes 11 seconds East approximately 2,231 feet along the Southeastern boundary of said State Lease No. 14721 to its Easternmost point, also being the Southernmost point of State Lease No. 14720, as amended; thence North 40 degrees 22 minutes 11 seconds East approximately 1,007 feet along the Southeastern boundary of said State Lease No. 14720 to its Easternmost point having Coordinates of X = 2,056,912.51 and Y = 553,497.48; thence North 40 degrees 22 minutes 11 seconds East 32.42 feet to a point having Coordinates of X = 2,056,933.52 and Y = 553,522.18; thence East 5,566.48 feet to a point having Coordinates of X = 2,062,500.00 and Y = 553,522.18; thence South 5,662.18 feet to the point of beginning, **LESS AND EXCEPT** that portion, if any, of State Lease 14720, as amended, and State Lease 14721, as amended, which may lie within the above described tract, (This tract includes only waterbottoms claimed and owned by the state and specifically excludes any land which the state may claim or own and to which the mineral rights are vested in the state), the above described tract containing approximately **421 acres**, all as more particularly outlined on a plat on file in the Office of Mineral Resources, Department of Natural Resources. All bearings, distances and coordinates are based on Louisiana Coordinate System of 1927, (North or South Zone), where applicable.

NOTE: The above description of the Tract nominated for lease has been provided and corrected, where required, exclusively by the nomination party. Any mineral lease selected from this Tract and awarded by the Louisiana State Mineral Board shall be without warranty of any kind, either express, implied, or statutory, including, but not limited to, the implied warranties of merchantability and fitness for a particular purpose. Should the mineral lease awarded by the Louisiana State Mineral Board be subsequently modified, cancelled or abrogated due to the existence of conflicting leases, operating agreements, private claims or other future obligations or conditions which may affect all or any portion of the leased Tract, it shall not relieve the Lessee of the obligation to pay any bonus due thereon to the Louisiana State Mineral Board, nor shall the Louisiana State Mineral Board be obligated to refund any consideration

paid by the Lessor prior to such modification, cancellation, or abrogation, including, but not limited to, bonuses, rentals and royalties.

Applicant: APPLE ENERGY CORPS, INC.

| Bidder | Cash Payment | Price/Acre | Rental | Oil | Gas | Other |
|--------|--------------|------------|--------|-----|-----|-------|
| | | | | | | |
| | | | | | | |
| | | | | | | |
| | | | | | | |

10080001

Active_Leases

IMAGERY.DOQQ_2008_1M_CII

IBERVILLE PARISH

MISSISSIPPI RIVER

P.O.B.

SL 14720

SL 14721

0 2,000 Feet

