

TRACT 41597 - De Soto and Red River Parishes, Louisiana

All of the lands now or formerly constituting the beds and bottoms of all water bodies of every nature and description as to which title is vested in the State of Louisiana, together with all islands arising therein and other lands formed by accretion or by reliction, where allowed by law, excepting tax adjudicated lands, and not presently under mineral lease on September 8, 2010, situated in De Soto and Red River Parishes, Louisiana, and more particularly described as follows: Beginning at a point having Coordinates of X = 1,729,000.00 and Y = 461,670.00; thence North 5,058.12 feet to a point having Coordinates of X = 1,729,000.00 and Y = 466,728.12; thence East 451.07 feet to the Southwest corner of Portion A of State Lease No. 19839, as amended, having Coordinates of X = 1,729,451.07 and Y = 466,728.12; thence South 89 degrees 13 minutes 43 seconds East 5,251.92 feet along the South boundary of Portion A of said State Lease No. 19839 to its Southeast corner, also being the Northwest corner of Portion B of said State Lease No. 19839 having Coordinates of X = 1,734,702.51 and Y = 466,657.42; thence South 00 degrees 37 minutes 43 seconds West 4,987.72 feet along the West boundary of Portion B of said State Lease No. 19839 to its Southwest corner having Coordinates of X = 1,734,647.79 and Y = 461,670.00; thence West 5,647.79 feet to the point of beginning, (This tract includes only waterbottoms claimed and owned by the state and specifically excludes any land which the state may claim or own and to which the mineral rights are vested in the state), containing approximately **20 acres**, all as more particularly outlined on a plat on file in the Office of Mineral Resources, Department of Natural Resources. All bearings, distances and coordinates are based on Louisiana Coordinate System of 1927, (North or South Zone), where applicable.

NOTE: The above description of the Tract nominated for lease has been provided and corrected, where required, exclusively by the nomination party. Any mineral lease selected from this Tract and awarded by the Louisiana State Mineral and Energy Board shall be without warranty of any kind, either express, implied, or statutory, including, but not limited to, the implied warranties of merchantability and fitness for a particular purpose. Should the mineral lease awarded by the Louisiana State Mineral and Energy Board be subsequently modified, cancelled or abrogated due to the existence of conflicting leases, operating agreements, private claims or other future obligations or conditions which may affect all or any portion of the leased Tract, it shall not relieve the Lessee of the obligation to pay any bonus due thereon to the Louisiana State Mineral and Energy Board, nor shall the Louisiana State Mineral and Energy Board be obligated to refund any consideration paid by the Lessor prior to such modification, cancellation, or abrogation, including, but not limited to, bonuses, rentals and royalties.

Bidder	Cash Payment	Price/ Acre	Rental	Oil	Gas	Other

Applicant: ECLIPSE OIL & GAS

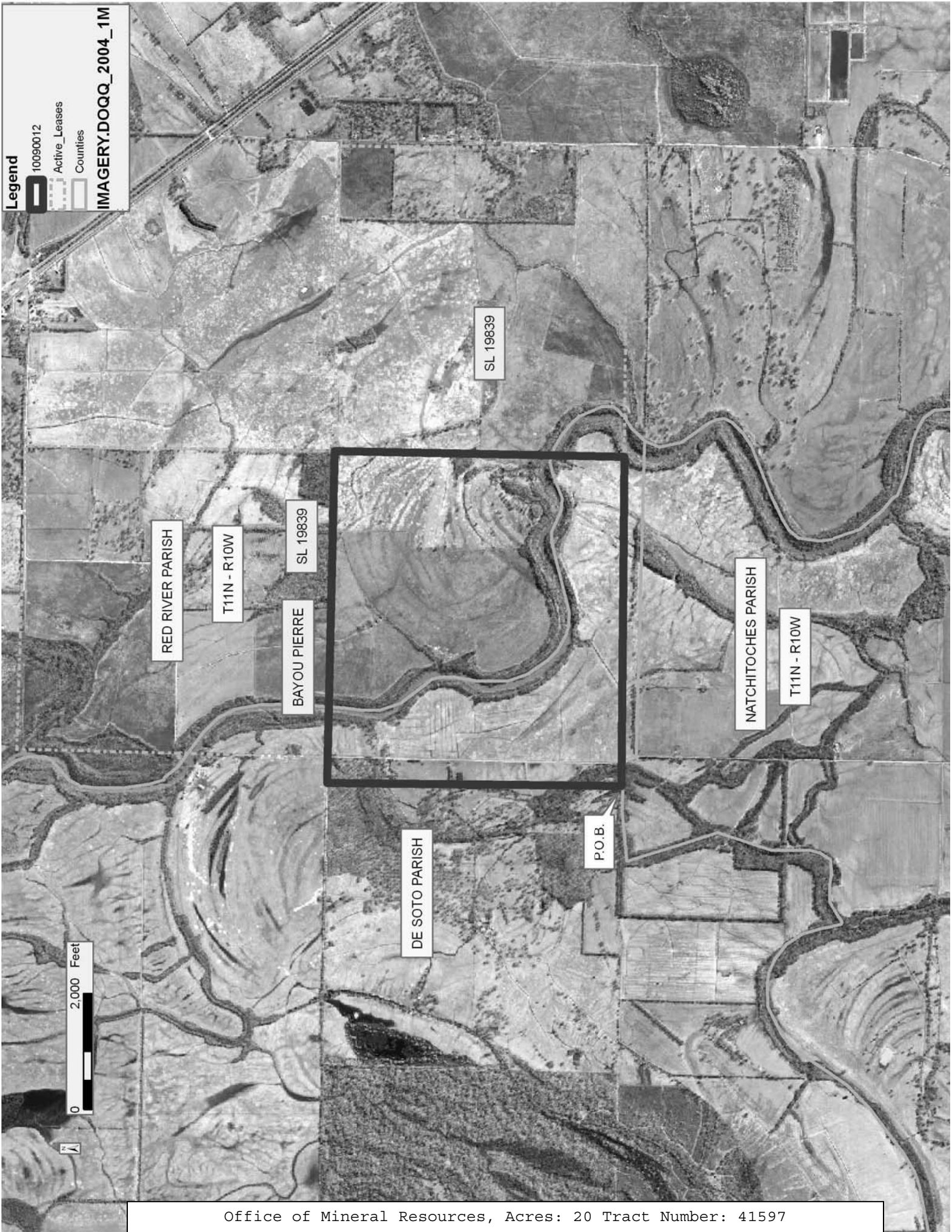
Legend

10090012

Active_Leases

Counties

IMAGERY.DOQQ_2004_1M



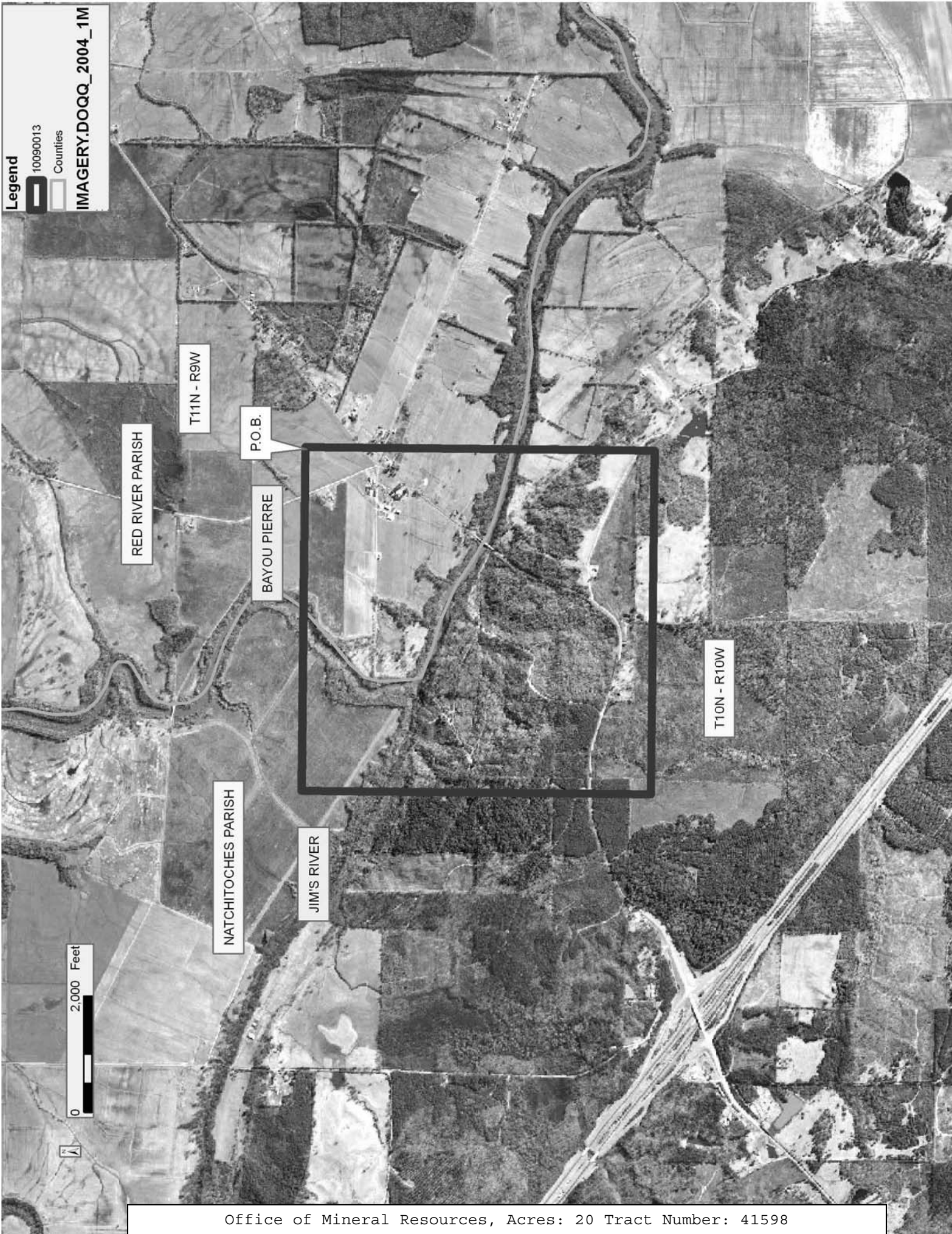
TRACT 41598 - Natchitoches and Red River Parishes, Louisiana

All of the lands now or formerly constituting the beds and bottoms of all water bodies of every nature and description as to which title is vested in the State of Louisiana, together with all islands arising therein and other lands formed by accretion or by reliction, where allowed by law, excepting tax adjudicated lands, and not presently under mineral lease on September 8, 2010, situated in Natchitoches and Red River Parishes, Louisiana, and more particularly described as follows: Beginning at a point having Coordinates of X = 1,740,040.00 and Y = 451,160.00; thence South 5,990.00 feet to a point having Coordinates of X = 1,740,040.00 and Y = 445,170.00; thence West 5,880.00 feet to a point having Coordinates of X = 1,734,160.00 and Y = 445,170.00; thence North 5,990.00 feet to a point having Coordinates of X = 1,734,160.00 and Y = 451,160.00; thence East 5,880.00 feet to the point of beginning, containing approximately **20 acres**, all as more particularly outlined on a plat on file in the Office of Mineral Resources, Department of Natural Resources. All bearings, distances and coordinates are based on Louisiana Coordinate System of 1927, (North or South Zone), where applicable.

NOTE: The above description of the Tract nominated for lease has been provided and corrected, where required, exclusively by the nomination party. Any mineral lease selected from this Tract and awarded by the Louisiana State Mineral and Energy Board shall be without warranty of any kind, either express, implied, or statutory, including, but not limited to, the implied warranties of merchantability and fitness for a particular purpose. Should the mineral lease awarded by the Louisiana State Mineral and Energy Board be subsequently modified, cancelled or abrogated due to the existence of conflicting leases, operating agreements, private claims or other future obligations or conditions which may affect all or any portion of the leased Tract, it shall not relieve the Lessee of the obligation to pay any bonus due thereon to the Louisiana State Mineral and Energy Board, nor shall the Louisiana State Mineral and Energy Board be obligated to refund any consideration paid by the Lessor prior to such modification, cancellation, or abrogation, including, but not limited to, bonuses, rentals and royalties.

Applicant: ECLIPSE OIL & GAS

Bidder	Cash Payment	Price/ Acre	Rental	Oil	Gas	Other



Legend

10090013

Counties

IMAGERY.DOQQ_2004_1M

0 2,000 Feet

TRACT 41599 - Catahoula and Concordia Parishes, Louisiana

All of the lands now or formerly constituting the beds and bottoms of all water bodies of every nature and description as to which title is vested in the State of Louisiana, together with all islands arising therein and other lands formed by accretion or by reliction, where allowed by law, excepting tax adjudicated lands, and not presently under mineral lease on September 8, 2010, situated in Catahoula and Concordia Parishes, Louisiana, and more particularly described as follows: Beginning at a point having Coordinates of X = 2,213,436.80 and Y = 259,317.90; thence East 1,500.00 feet to a point having Coordinates of X = 2,214,936.80 and Y = 259,317.90; thence South 1,500.00 feet to a point having Coordinates of X = 2,214,936.80 and Y = 257,817.90; thence West 1,500.00 feet to a point having Coordinates of X = 2,213,436.80 and Y = 257,817.90; thence North 1,500.00 feet to the point of beginning, containing approximately **3 acres**, all as more particularly outlined on a plat on file in the Office of Mineral Resources, Department of Natural Resources. All bearings, distances and coordinates are based on Louisiana Coordinate System of 1927, (North or South Zone), where applicable.

NOTE: The above description of the Tract nominated for lease has been provided and corrected, where required, exclusively by the nomination party. Any mineral lease selected from this Tract and awarded by the Louisiana State Mineral and Energy Board shall be without warranty of any kind, either express, implied, or statutory, including, but not limited to, the implied warranties of merchantability and fitness for a particular purpose. Should the mineral lease awarded by the Louisiana State Mineral and Energy Board be subsequently modified, cancelled or abrogated due to the existence of conflicting leases, operating agreements, private claims or other future obligations or conditions which may affect all or any portion of the leased Tract, it shall not relieve the Lessee of the obligation to pay any bonus due thereon to the Louisiana State Mineral and Energy Board, nor shall the Louisiana State Mineral and Energy Board be obligated to refund any consideration paid by the Lessor prior to such modification, cancellation, or abrogation, including, but not limited to, bonuses, rentals and royalties.

Applicant: THEOPHILUS OIL, GAS & LAND SERVICES, LLC

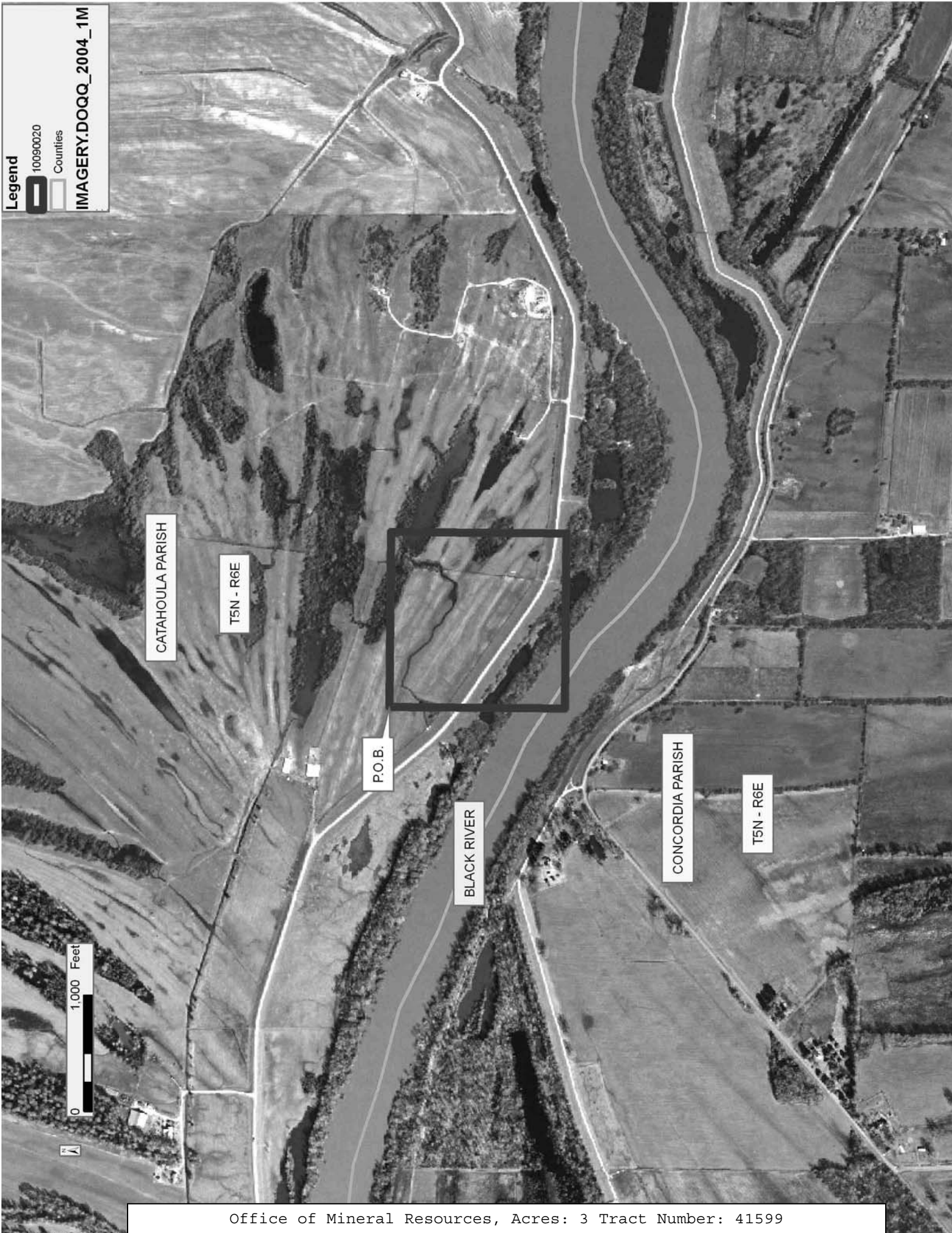
Bidder	Cash Payment	Price/Acre	Rental	Oil	Gas	Other

Legend

10090020

Counties

IMAGERY.DOQQ_2004_1M



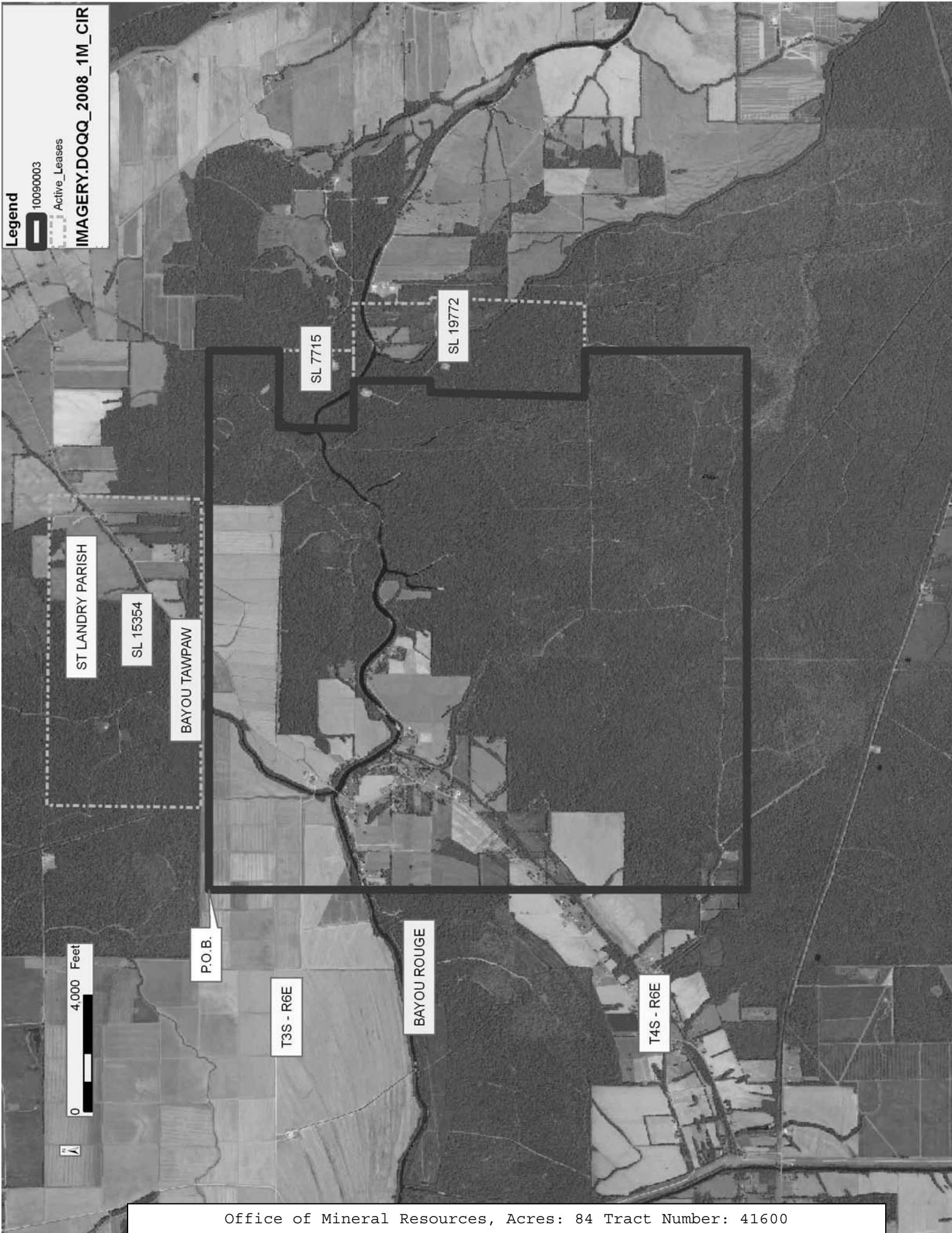
TRACT 41600 - St. Landry Parish, Louisiana

All of the lands now or formerly constituting the beds and bottoms of all water bodies of every nature and description as to which title is vested in the State of Louisiana, together with all islands arising therein and other lands formed by accretion or by reliction, where allowed by law, excepting tax adjudicated lands, and not presently under mineral lease on September 8, 2010, situated in St. Landry Parish, Louisiana, and more particularly described as follows: Beginning at a point having Coordinates of X = 1,834,068.00 and Y = 765,735.00; thence East 18,480.00 feet to a point having Coordinates of X = 1,852,548.00 and Y = 765,735.00; thence South 2,434.47 feet to a point on the North boundary of State Lease No. 7715, as amended having Coordinates of X = 1,852,548.00 and Y = 763,300.53; thence along the boundary of said State Lease No. 7715 the following courses: North 89 degrees 37 minutes 02 seconds West 2,630.25 feet, South 00 degrees 42 minutes 56 seconds West 2,557.88 feet, and North 89 degrees 58 minutes 29 seconds East approximately 1,629 feet to the Northwest corner of State Lease No. 19772; thence along the boundary of said State Lease No. 19772 the following courses: Southerly approximately 2,609 feet, Westerly approximately 399 feet, Southerly approximately 5,356 feet to its Southwest corner having Coordinates of X = 1,850,961.51 and Y = 752,840.90, and East 1,586.49 feet to a point having Coordinates of X = 1,852,548.00 and Y = 752,840.90; thence South 5,585.90 feet to a point having Coordinates of X = 1,852,548.00 and Y = 747,255.00; thence West 18,480.00 feet to a point having Coordinates of X = 1,834,068.00 and Y = 747,255.00; thence North 18,480.00 feet to the point of beginning, **LESS AND EXCEPT** that portion, if any, of State Lease No. 7715, as amended, and State Lease No. 19772 which may lie within the above described tract, containing approximately **84 acres**, all as more particularly outlined on a plat on file in the Office of Mineral Resources, Department of Natural Resources. All bearings, distances and coordinates are based on Louisiana Coordinate System of 1927, (North or South Zone), where applicable.

NOTE: The above description of the Tract nominated for lease has been provided and corrected, where required, exclusively by the nomination party. Any mineral lease selected from this Tract and awarded by the Louisiana State Mineral and Energy Board shall be without warranty of any kind, either express, implied, or statutory, including, but not limited to, the implied warranties of merchantability and fitness for a particular purpose. Should the mineral lease awarded by the Louisiana State Mineral and Energy Board be subsequently modified, cancelled or abrogated due to the existence of conflicting leases, operating agreements, private claims or other future obligations or conditions which may affect all or any portion of the leased Tract, it shall not relieve the Lessee of the obligation to pay any bonus due thereon to the Louisiana State Mineral and Energy Board, nor shall the Louisiana State Mineral and Energy Board be obligated to refund any consideration paid by the Lessor prior to such modification, cancellation, or abrogation, including, but not limited to, bonuses, rentals and royalties.

Applicant: SOUTH COAST PRODUCTION COMPANY, LTD.

Bidder	Cash Payment	Price/ Acre	Rental	Oil	Gas	Other



TRACT 41601 - Iberia Parish, Louisiana

All of the lands now or formerly constituting the beds and bottoms of all water bodies of every nature and description as to which title is vested in the State of Louisiana, together with all islands arising therein and other lands formed by accretion or by reliction, where allowed by law, excepting tax adjudicated lands, and not presently under mineral lease on September 8, 2010, situated in Iberia Parish, Louisiana, and more particularly described as follows: Beginning at a point having Coordinates of X = 1,828,148.00 and Y = 423,145.00; thence East 9,240.00 feet to a point having Coordinates of X = 1,837,388.00 and Y = 423,145.00; thence South 8,408.00 feet to a point having Coordinates of X = 1,837,388.00 and Y = 414,737.00; thence West 9,240.00 feet to a point having Coordinates of X = 1,828,148.00 and Y = 414,737.00; thence North 8,408.00 feet to the point of beginning, containing approximately **1,673 acres**, all as more particularly outlined on a plat on file in the Office of Mineral Resources, Department of Natural Resources. All bearings, distances and coordinates are based on Louisiana Coordinate System of 1927, (North or South Zone), where applicable.

NOTE: The above description of the Tract nominated for lease has been provided and corrected, where required, exclusively by the nomination party. Any mineral lease selected from this Tract and awarded by the Louisiana State Mineral and Energy Board shall be without warranty of any kind, either express, implied, or statutory, including, but not limited to, the implied warranties of merchantability and fitness for a particular purpose. Should the mineral lease awarded by the Louisiana State Mineral and Energy Board be subsequently modified, cancelled or abrogated due to the existence of conflicting leases, operating agreements, private claims or other future obligations or conditions which may affect all or any portion of the leased Tract, it shall not relieve the Lessee of the obligation to pay any bonus due thereon to the Louisiana State Mineral and Energy Board, nor shall the Louisiana State Mineral and Energy Board be obligated to refund any consideration paid by the Lessor prior to such modification, cancellation, or abrogation, including, but not limited to, bonuses, rentals and royalties.

NOTE: This tract is located in an area designated by the Louisiana Legislature or the Wildlife and Fisheries Commission as a public oyster seed ground or reservation, or area of Calcasieu or Sabine Lake. Proposed activities on this tract will be evaluated on a case by case basis. Modifications to proposed project features including, but not limited to, access routes, well sites, flowlines, and appurtenant structures may be required. In addition, compensatory mitigation will be required to offset unavoidable habitat impacts.

NOTE: The State of Louisiana does hereby reserve, and this lease shall be subject to, the imprescriptible right of surface use in the nature of a servitude in favor of the Department of Natural Resources, including its Offices and Commissions, for the sole purpose of implementing,

constructing, servicing and maintaining approved coastal zone management and/or restoration projects. Utilization of any and all rights derived under this lease by the mineral lessee, its agents, successors or assigns, shall not interfere with nor hinder the reasonable surface use by the Department of Natural Resources, its Offices or Commissions, as herein above reserved.

Applicant: KARE-SUE ENERGY, INC.

Bidder	Cash Payment	Price/ Acre	Rental	Oil	Gas	Other

IBERIA PARISH



P.O.B.

VERMILION BAY

TRACT 41602 - Iberia Parish, Louisiana

All of the lands now or formerly constituting the beds and bottoms of all water bodies of every nature and description as to which title is vested in the State of Louisiana, together with all islands arising therein and other lands formed by accretion or by reliction, where allowed by law, excepting tax adjudicated lands, and not presently under mineral lease on September 8, 2010, situated in Iberia Parish, Louisiana, and more particularly described as follows: Beginning at a point having Coordinates of X = 1,837,388.00 and Y = 423,145.00; thence East approximately 3,411 feet to a point on the boundary of State Lease No. 500, as amended, having a Coordinate of Y = 423,145.00; thence meander along the Western boundary of said State Lease No. 500 the following courses: Southerly, Easterly, Southwesterly, Northwesterly and Southerly to the point of intersection with an East-West line having a Coordinate of Y = 414,737.00; thence West approximately 807 feet to the Southeast corner of State Lease No. 19943 having Coordinates of X = 1,844,853.00 and Y = 414,737.00; thence along the boundary of said State Lease No. 19943 the following courses: North 3,405.49 feet, South 87 degrees 40 minutes 34 seconds West 1,029.88 feet, North 31 degrees 12 minutes 54 seconds West 168.53 feet and South 89 degrees 59 minutes 40 seconds West 52.32 feet to its Northwest corner, also being the Northeast corner of State Lease No. 15612, as amended, having Coordinates of X = 1,843,684.31 and Y = 418,244.86; thence along the boundary of said State Lease No. 15612 the following courses: North 27 degrees 34 minutes 43 seconds West 53.36 feet, South 17 degrees 31 minutes 32 seconds West 65.17 feet, South 13 degrees 37 minutes 37 seconds West 169.78 feet, South 07 degrees 51 minutes 12 seconds West 146.37 feet and North 60 degrees 15 minutes 18 seconds West 5.41 feet to its Westernmost corner and a point on the boundary of State Lease No. 743, as amended, having Coordinates of X = 1,843,575.29 and Y = 417,922.69; thence the following courses: North 45 degrees 00 minutes 00 seconds West 0.36 feet, North 37 degrees 55 minutes 35 seconds West 97.62 feet, North 26 degrees 57 minutes 08 seconds West 66.19 feet, North 55 degrees 00 minutes 29 seconds West 36.62 feet, North 32 degrees 41 minutes 31 seconds West 79.62 feet, North 01 degrees 19 minutes 56 seconds West 43.02 feet, North 24 degrees 34 minutes 02 seconds West 38.49 feet, North 55.00 feet, North 48 degrees 21 minutes 59 seconds West 60.21 feet, North 29 degrees 19 minutes 55 seconds West 120.45 feet, North 02 degrees 17 minutes 26 seconds West 100.08 feet, North 26 degrees 33 minutes 54 seconds West 38.02 feet, North 42 degrees 02 minutes 21 seconds West 82.14 feet, North 11 degrees 41 minutes 22 seconds West 59.23 feet, North 59 degrees 10 minutes 20 seconds West 72.21 feet, North 30 degrees 57 minutes 50 seconds West 122.45 feet, South 13 degrees 07 minutes 18 seconds West 2,344.23 feet and South 02 degrees 14 minutes 37 seconds East 1,801.36 feet to a point having Coordinates of X = 1,842,616.33 and Y = 414,737.00; thence West 5,228.33 feet to a point having Coordinates of X = 1,837,388.00 and Y = 414,737.00; thence North 8,408.00 feet to the point of beginning, **LESS AND EXCEPT** that portion, if any of State Lease No. 500, as amended, that lies within the above described tract, containing approximately **873 acres**, all as more particularly outlined on a plat on file in the Office of Mineral

Resources, Department of Natural Resources. All bearings, distances and coordinates are based on Louisiana Coordinate System of 1927, (North or South Zone), where applicable.

NOTE: The above description of the Tract nominated for lease has been provided and corrected, where required, exclusively by the nomination party. Any mineral lease selected from this Tract and awarded by the Louisiana State Mineral and Energy Board shall be without warranty of any kind, either express, implied, or statutory, including, but not limited to, the implied warranties of merchantability and fitness for a particular purpose. Should the mineral lease awarded by the Louisiana State Mineral and Energy Board be subsequently modified, cancelled or abrogated due to the existence of conflicting leases, operating agreements, private claims or other future obligations or conditions which may affect all or any portion of the leased Tract, it shall not relieve the Lessee of the obligation to pay any bonus due thereon to the Louisiana State Mineral and Energy Board, nor shall the Louisiana State Mineral and Energy Board be obligated to refund any consideration paid by the Lessor prior to such modification, cancellation, or abrogation, including, but not limited to, bonuses, rentals and royalties.

NOTE: This tract is located in an area designated by the Louisiana Legislature or the Wildlife and Fisheries Commission as a public oyster seed ground or reservation, or area of Calcasieu or Sabine Lake. Proposed activities on this tract will be evaluated on a case by case basis. Modifications to proposed project features including, but not limited to, access routes, well sites, flowlines, and appurtenant structures may be required. In addition, compensatory mitigation will be required to offset unavoidable habitat impacts.

NOTE: The State of Louisiana does hereby reserve, and this lease shall be subject to, the imprescriptible right of surface use in the nature of a servitude in favor of the Department of Natural Resources, including its Offices and Commissions, for the sole purpose of implementing, constructing, servicing and maintaining approved coastal zone management and/or restoration projects. Utilization of any and all rights derived under this lease by the mineral lessee, its agents, successors or assigns, shall not interfere with nor hinder the reasonable surface use by the Department of Natural Resources, its Offices or Commissions, as herein above reserved.

Applicant: KARE-SUE ENERGY, INC.

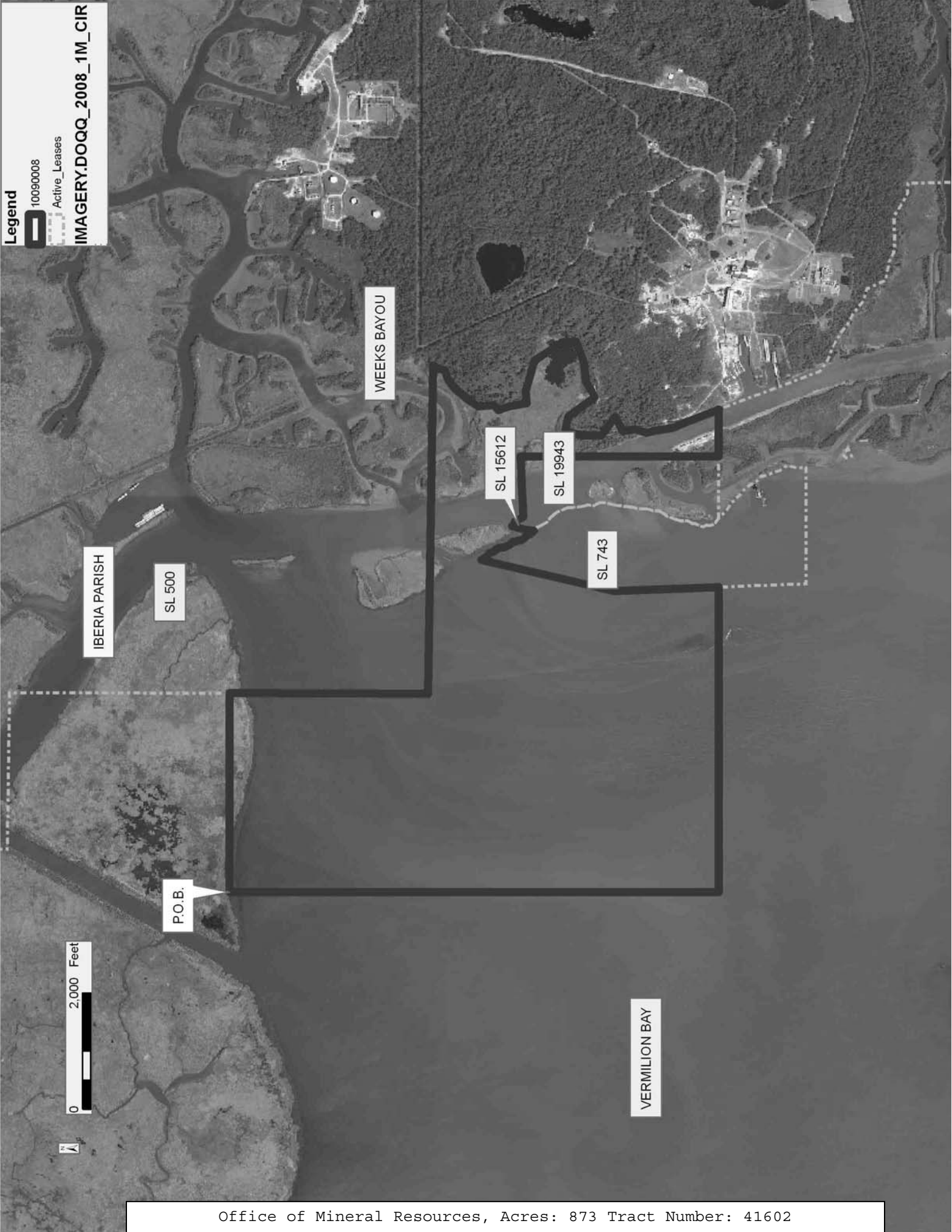
Bidder	Cash Payment	Price/ Acre	Rental	Oil	Gas	Other

Legend

10090008

Active Leases

IMAGERY.DOQQ_2008_1M_CIR



TRACT 41603 - Iberia Parish, Louisiana

All of the lands now or formerly constituting the beds and bottoms of all water bodies of every nature and description as to which title is vested in the State of Louisiana, together with all islands arising therein and other lands formed by accretion or by reliction, where allowed by law, excepting tax adjudicated lands, and not presently under mineral lease on September 8, 2010, situated in Iberia Parish, Louisiana, and more particularly described as follows: Beginning at a point having Coordinates of X = 1,828,148.00 and Y = 414,737.00; thence East 9,240.00 feet to a point having Coordinates of X = 1,837,388.00 and Y = 414,737.00; thence South 8,856.00 feet to a point having Coordinates of X = 1,837,388.00 and Y = 405,881.00; thence West 9,240.00 feet to a point having Coordinates of X = 1,828,148.00 and Y = 405,881.00; thence North 8,856.00 feet to the point of beginning, (This lease includes only waterbottoms claimed and owned by the state and specifically excludes any land which the state may claim or own and to which the mineral rights are vested in the state), containing approximately **1,763 acres**, all as more particularly outlined on a plat on file in the Office of Mineral Resources, Department of Natural Resources. All bearings, distances and coordinates are based on Louisiana Coordinate System of 1927, (North or South Zone), where applicable.

NOTE: The above description of the Tract nominated for lease has been provided and corrected, where required, exclusively by the nomination party. Any mineral lease selected from this Tract and awarded by the Louisiana State Mineral and Energy Board shall be without warranty of any kind, either express, implied, or statutory, including, but not limited to, the implied warranties of merchantability and fitness for a particular purpose. Should the mineral lease awarded by the Louisiana State Mineral and Energy Board be subsequently modified, cancelled or abrogated due to the existence of conflicting leases, operating agreements, private claims or other future obligations or conditions which may affect all or any portion of the leased Tract, it shall not relieve the Lessee of the obligation to pay any bonus due thereon to the Louisiana State Mineral and Energy Board, nor shall the Louisiana State Mineral and Energy Board be obligated to refund any consideration paid by the Lessor prior to such modification, cancellation, or abrogation, including, but not limited to, bonuses, rentals and royalties.

NOTE: This tract is located in an area designated by the Louisiana Legislature or the Wildlife and Fisheries Commission as a public oyster seed ground or reservation, or area of Calcasieu or Sabine Lake. Proposed activities on this tract will be evaluated on a case by case basis. Modifications to proposed project features including, but not limited to, access routes, well sites, flowlines, and appurtenant structures may be required. In addition, compensatory mitigation will be required to offset unavoidable habitat impacts.

NOTE: The State of Louisiana does hereby reserve, and this lease shall be subject to, the imprescriptible right of surface use in the nature of a

servitude in favor of the Department of Natural Resources, including its Offices and Commissions, for the sole purpose of implementing, constructing, servicing and maintaining approved coastal zone management and/or restoration projects. Utilization of any and all rights derived under this lease by the mineral lessee, its agents, successors or assigns, shall not interfere with nor hinder the reasonable surface use by the Department of Natural Resources, its Offices or Commissions, as herein above reserved.

Applicant: KARE-SUE ENERGY, INC.

Bidder	Cash Payment	Price/ Acre	Rental	Oil	Gas	Other

Legend

10090010

IMAGERY.DOQQ_2008_1M_CIR

IBERIA PARISH

VERMILION BAY

T14S - R6E

P.O.B.

0 2,000 Feet



TRACT 41604 - Iberia Parish, Louisiana

All of the lands now or formerly constituting the beds and bottoms of all water bodies of every nature and description as to which title is vested in the State of Louisiana, together with all islands arising therein and other lands formed by accretion or by reliction, where allowed by law, excepting tax adjudicated lands, and not presently under mineral lease on September 8, 2010, situated in Iberia Parish, Louisiana, and more particularly described as follows: Beginning at a point having Coordinates of X = 1,837,388.00 and Y = 414,737.00; thence East 5,228.33 feet to a point on the boundary of State Lease No. 743, as amended, having Coordinates of X = 1,842,616.33 and Y = 414,737.00; thence along the boundary of said State Lease No. 743 the following courses: South 02 degrees 14 minutes 37 seconds East 1,486.61 feet and East 1,995.47 feet to a point on the boundary of State Lease No. 19945 having Coordinates of X = 1,844,670.00 and Y = 413,251.53; thence along the boundary of said State Lease No. 19945 the following courses: South 67 degrees 20 minutes 48 seconds West 146.78 feet, South 18 degrees 55 minutes 00 seconds East 417.43 feet, North 65 degrees 05 minutes 44 seconds East 391.54 feet, North 22 degrees 43 minutes 45 seconds West 401.16 feet and South 67 degrees 20 minutes 48 seconds West 203.23 feet to a point on the boundary of said State Lease No. 743 having Coordinates of X = 1,844,682.45 and Y = 413,256.73; thence along the boundary of said State Lease No. 743 the following courses: North 36 degrees 19 minutes 37 seconds West 12.41 feet, North 12 degrees 26 minutes 22 seconds West 69.64 feet, North 02 degrees 25 minutes 35 seconds East 118.11 feet, North 14 degrees 44 minutes 37 seconds East 117.89 feet, North 14 degrees 44 minutes 37 seconds West 39.30 feet, North 44 degrees 12 minutes 55 seconds West 51.63 feet, North 30 degrees 12 minutes 12 seconds West 77.53 feet, North 11 degrees 42 minutes 45 seconds West 83.75 feet, North 26 degrees 44 minutes 43 seconds West 142.22 feet, North 14 degrees 49 minutes 35 seconds West 35.18 feet, North 03 degrees 52 minutes 43 seconds West 59.14 feet, North 49 degrees 11 minutes 06 seconds West 87.21 feet, North 37 degrees 43 minutes 59 seconds West 106.22 feet, North 03 degrees 48 minutes 51 seconds West 30.07 feet, North 37 degrees 31 minutes 09 seconds West 70.61 feet, North 50 degrees 11 minutes 40 seconds West 39.06 feet, North 32 degrees 52 minutes 07 seconds West 77.39 feet, North 58 degrees 54 minutes 45 seconds West 79.41 feet, North 42 degrees 52 minutes 44 seconds West 95.53 feet, North 64 degrees 58 minutes 59 seconds West 33.11 feet, North 27 degrees 33 minutes 10 seconds West 77.83 feet, North 60 degrees 37 minutes 27 seconds West 173.29 feet, North 39 degrees 19 minutes 09 seconds West 135.73 feet and North 53 degrees 32 minutes 34 seconds West 42.36 feet to the Southwest corner of State Lease No. 19943 having Coordinates of X = 1,843,797.97 and Y = 414,737.00; thence East 1,055.03 feet along the boundary of said State Lease No. 19943 to its Southeast corner having Coordinates of X = 1,844,853.00 and Y = 414,737.00; thence East approximately 807 feet to a point on the boundary of State Lease No. 500, as amended having a Coordinate of Y = 414,737.00; thence Southeasterly along the boundary of said State Lease No. 500 to the point of intersection with a North-South line having a Coordinate of X =

1,846,920.00; thence South 6,799.46 feet to a point having Coordinates of X = 1,846,920.00 and Y = 405,881.00; thence West 9,532.00 feet to a point having Coordinates of X = 1,837,388.00 and Y = 405,881.00; thence North 8,856.00 feet to the point of beginning, **LESS AND EXCEPT** that State Lease No. 743, as amended that lies within the above described tract, more particularly described as follows: Commencing at the point of beginning of the above Nominated Area having Coordinates of X = 1,837,388.00 and Y = 414,737.00; thence South 73 degrees 35 minutes 54 seconds East 7,746.36 feet to a point on the boundary of said State Lease No. 743 having Coordinates of X = 1,844,819.13 and Y = 412,549.67; thence along the boundary of said State Lease No. 743 the following courses: North 40 degrees 54 minutes 52 seconds East 59.55 feet, South 72 degrees 13 minutes 43 seconds East 81.91 feet, South 43 degrees 15 minutes 51 seconds East 61.59 feet, South 63 degrees 21 minutes 41 seconds West 139.91 feet and North 21 degrees 18 minutes 13 seconds West 94.00 feet to the point of beginning, (This lease includes only waterbottoms claimed and owned by the state and specifically excludes any land which the state may claim or own and to which the mineral rights are vested in the state), containing approximately **1,399 acres**, all as more particularly outlined on a plat on file in the Office of Mineral Resources, Department of Natural Resources. All bearings, distances and coordinates are based on Louisiana Coordinate System of 1927, (North or South Zone), where applicable.

NOTE: The above description of the Tract nominated for lease has been provided and corrected, where required, exclusively by the nomination party. Any mineral lease selected from this Tract and awarded by the Louisiana State Mineral and Energy Board shall be without warranty of any kind, either express, implied, or statutory, including, but not limited to, the implied warranties of merchantability and fitness for a particular purpose. Should the mineral lease awarded by the Louisiana State Mineral and Energy Board be subsequently modified, cancelled or abrogated due to the existence of conflicting leases, operating agreements, private claims or other future obligations or conditions which may affect all or any portion of the leased Tract, it shall not relieve the Lessee of the obligation to pay any bonus due thereon to the Louisiana State Mineral and Energy Board, nor shall the Louisiana State Mineral and Energy Board be obligated to refund any consideration paid by the Lessor prior to such modification, cancellation, or abrogation, including, but not limited to, bonuses, rentals and royalties.

NOTE: This tract is located in an area designated by the Louisiana Legislature or the Wildlife and Fisheries Commission as a public oyster seed ground or reservation, or area of Calcasieu or Sabine Lake. Proposed activities on this tract will be evaluated on a case by case basis. Modifications to proposed project features including, but not limited to, access routes, well sites, flowlines, and appurtenant structures may be required. In addition, compensatory mitigation will be required to offset unavoidable habitat impacts.

NOTE: The State of Louisiana does hereby reserve, and this lease shall be subject to, the imprescriptible right of surface use in the nature of a servitude in favor of the Department of Natural Resources, including its Offices and Commissions, for the sole purpose of implementing, constructing, servicing and maintaining approved coastal zone management and/or restoration projects. Utilization of any and all rights derived under this lease by the mineral lessee, its agents, successors or assigns, shall not interfere with nor hinder the reasonable surface use by the Department of Natural Resources, its Offices or Commissions, as herein above reserved.

Applicant: KARE-SUE ENERGY, INC.

Bidder	Cash Payment	Price/ Acre	Rental	Oil	Gas	Other

Legend

10090009

Active Leases

IMAGERY.DOQQ_2008_1M_CIR



TRACT 41605 - Terrebonne Parish, Louisiana

All of the lands now or formerly constituting the beds and bottoms of all water bodies of every nature and description as to which title is vested in the State of Louisiana, together with all islands arising therein and other lands formed by accretion or by reliction, where allowed by law, excepting tax adjudicated lands, and not presently under mineral lease on September 8, 2010, situated in Terrebonne Parish, Louisiana, and more particularly described as follows: Beginning at a point having Coordinates of X = 2,163,729.32 and Y = 403,154.61; thence East 1,074.26 feet to a point having Coordinates of X = 2,164,803.58 and Y = 403,154.61; thence South 1,700.00 feet to a point having Coordinates of X = 2,164,803.58 and Y = 401,454.61; thence West 1,074.26 feet to a point having Coordinates of X = 2,163,729.32 and Y = 401,454.61; thence North 1,700.00 feet to the point of beginning, containing approximately **1 acre**, all as more particularly outlined on a plat on file in the Office of Mineral Resources, Department of Natural Resources. All bearings, distances and coordinates are based on Louisiana Coordinate System of 1927, (North or South Zone), where applicable.

NOTE: The above description of the Tract nominated for lease has been provided and corrected, where required, exclusively by the nomination party. Any mineral lease selected from this Tract and awarded by the Louisiana State Mineral and Energy Board shall be without warranty of any kind, either express, implied, or statutory, including, but not limited to, the implied warranties of merchantability and fitness for a particular purpose. Should the mineral lease awarded by the Louisiana State Mineral and Energy Board be subsequently modified, cancelled or abrogated due to the existence of conflicting leases, operating agreements, private claims or other future obligations or conditions which may affect all or any portion of the leased Tract, it shall not relieve the Lessee of the obligation to pay any bonus due thereon to the Louisiana State Mineral and Energy Board, nor shall the Louisiana State Mineral and Energy Board be obligated to refund any consideration paid by the Lessor prior to such modification, cancellation, or abrogation, including, but not limited to, bonuses, rentals and royalties.

NOTE: This tract is located in Sections 77, 78, 79 and 141 of Township 15 South, Range 16 East, in the Terrebonne Oil & Gas Field, Terrebonne Parish, Louisiana. This acreage is included in "Tract 46" of the Office of Conservation unit RDGFLD RB SUA, Order 326-A-8. The Vicknair et al No. 1 well, SN 231428, serves as the designated unit well and has produced from October 2006 to present - 644 MMCF of gas and 36.8 MBBLs of oil.

Under the terms of the State mineral lease, the successful bidder shall be responsible for payment of any unpaid royalty attributed to production from this acreage within the unit from date of first unit production.

Applicant: STAFF, OFFICE OF MINERAL RESOURCES

Bidder	Cash Payment	Price/ Acre	Rental	Oil	Gas	Other

Legend

10090044

IMAGERY.DOQQ_2008_1M_CIR

0 1,000 Feet

SEC 141

SEC 79

BAYOU TERREBONNE

TERREBONNE PARISH

T15S - R16E

P.O.B.

SEC 78

SEC 77

TRACT 41606 - Jefferson Parish, Louisiana

All of the lands now or formerly constituting the beds and bottoms of all water bodies of every nature and description as to which title is vested in the State of Louisiana, together with all islands arising therein and other lands formed by accretion or by reliction, where allowed by law, excepting tax adjudicated lands, and not presently under mineral lease on September 8, 2010, situated in Jefferson Parish, Louisiana, and more particularly described as follows: Beginning at a point having Coordinates of X = 2,389,768.00 and Y = 397,146.00; thence South 18,480.00 feet to a point having Coordinates of X = 2,389,768.00 and Y = 378,666.00; thence West 18,480.00 feet to a point having Coordinates of X = 2,371,288.00 and Y = 378,666.00; thence North 9,534.00 feet to a point having Coordinates of X = 2,371,288.00 and Y = 388,200.00; thence East 5,312.00 feet to a point having Coordinates of X = 2,376,600.00 and Y = 388,200.00; thence North 8,946.00 feet to a point having Coordinates of X = 2,376,600.00 and Y = 397,146.00; thence East 13,168.00 feet to the point of beginning, **LESS AND EXCEPT** all that portion of Operating Agreement No. 0271 that lies within the above described tract and more particularly described as follows: Commencing at the point of beginning of the above described tract having Coordinates of X = 2,389,768.00 and Y = 397,146.00; thence South 15 degrees 13 minutes 41 seconds West 13,759.15 feet to the point of beginning of said Operating Agreement No. 0271 having Coordinates of X = 2,386,154.02 and Y = 383,869.95; thence along the boundary of said Operating Agreement No. 0271 the following courses: North 41 degrees 16 minutes 07 seconds West 101.06 feet; North 36 degrees 49 minutes 41 seconds West 966.66 feet; North 35 degrees 26 minutes 45 seconds West 234.47 feet; North 62 degrees 51 minutes 44 seconds East 150.74 feet; North 70 degrees 33 minutes 36 seconds East 135.44 feet; North 77 degrees 14 minutes 33 seconds East 204.14 feet; North 87 degrees 12 minutes 26 seconds East 137.12 feet; South 37 degrees 49 minutes 24 seconds West 20.64 feet; South 30 degrees 32 minutes 28 seconds East 66.72 feet; South 37 degrees 12 minutes 01 seconds East 154.68 feet; South 28 degrees 35 minutes 07 seconds East 29.34 feet; South 26 degrees 22 minutes 20 seconds East 130.25 feet; North 64 degrees 40 minutes 02 seconds East 19.11 feet; South 33 degrees 15 minutes 41 seconds East 297.45 feet; South 29 degrees 55 minutes 39 seconds East 27.17 feet; South 36 degrees 20 minutes 30 seconds East 99.95 feet; South 27 degrees 12 minutes 25 seconds East 65.89 feet; South 45 degrees 53 minutes 06 seconds East 79.23 feet; South 45 degrees 10 minutes 40 seconds East 83.23 feet; South 45 degrees 12 minutes 12 seconds East 73.13 feet; South 38 degrees 52 minutes 06 seconds East 100.37 feet; South 34 degrees 43 minutes 54 seconds East 41.77 feet; South 62 degrees 48 minutes 12 seconds West 40.15 feet and South 71 degrees 38 minutes 22 seconds West 531.80 feet to its point of beginning, the nominated tract containing approximately **277 acres**, all as more particularly outlined on a plat on file in the Office of Mineral Resources, Department of Natural Resources. All bearings, distances and coordinates are based on Louisiana Coordinate System of 1927, (North or South Zone), where applicable.

NOTE: The above description of the Tract nominated for lease has been provided and corrected, where required, exclusively by the nomination party. Any mineral lease selected from this Tract and awarded by the Louisiana State Mineral and Energy Board shall be without warranty of any kind, either express, implied, or statutory, including, but not limited to, the implied warranties of merchantability and fitness for a particular purpose. Should the mineral lease awarded by the Louisiana State Mineral and Energy Board be subsequently modified, cancelled or abrogated due to the existence of conflicting leases, operating agreements, private claims or other future obligations or conditions which may affect all or any portion of the leased Tract, it shall not relieve the Lessee of the obligation to pay any bonus due thereon to the Louisiana State Mineral and Energy Board, nor shall the Louisiana State Mineral and Energy Board be obligated to refund any consideration paid by the Lessor prior to such modification, cancellation, or abrogation, including, but not limited to, bonuses, rentals and royalties.

NOTE: The State of Louisiana does hereby reserve, and this lease shall be subject to, the imprescriptible right of surface use in the nature of a servitude in favor of the Department of Natural Resources, including its Offices and Commissions, for the sole purpose of implementing, constructing, servicing and maintaining approved coastal zone management and/or restoration projects. Utilization of any and all rights derived under this lease by the mineral lessee, its agents, successors or assigns, shall not interfere with nor hinder the reasonable surface use by the Department of Natural Resources, its Offices or Commissions, as herein above reserved.

Applicant: IHDW ENERGY COMPANY

Bidder	Cash Payment	Price/ Acre	Rental	Oil	Gas	Other

Legend
10090005
Active Leases
IMAGERY.DOQQ_2008_1M_CIR



JEFFERSON PARISH

T15S - R23E

P.O.B.

LAKE SALVADOR

AO 0271

BAYOU BARATARIA

T16S - R23E