

**TRACT 41617 - Terrebonne Parish, Louisiana**

All of the lands now or formerly constituting the beds and bottoms of all water bodies of every nature and description as to which title is vested in the State of Louisiana, together with all islands arising therein and other lands formed by accretion or by reliction, where allowed by law, excepting tax adjudicated lands, and not presently under mineral lease on September 8, 2010, situated in Terrebonne Parish, Louisiana, and more particularly described as follows: Beginning at a point having Coordinates of X = 2,070,872.44 and Y = 308,280.16; thence North 3,905.45 feet to the Southeast corner of State Lease No. 19642 having Coordinates of X = 2,070,872.44 and Y = 312,185.61; thence along the boundary of said State Lease No. 19642 the following courses: North 01 degrees 31 minutes 04 seconds West 5,297.05 feet to a point having Coordinates of X = 2,070,732.13 and Y = 317,480.80; South 89 degrees 32 minutes 44 seconds West 28.99 feet to a point having Coordinates of X = 2,070,703.14 and Y = 317,480.57 and North 01 degrees 00 minutes 00 seconds West 2,824.08 feet to a point having Coordinates of X = 2,070,653.85 and Y = 320,304.22; thence East 11,029.53 feet to a point having Coordinates of X = 2,081,683.38 and Y = 320,304.22; thence South 8,025.82 feet to the Easternmost Northeast corner of State Lease No. 16363, as amended, having Coordinates of X = 2,081,683.38 and Y = 312,278.40; thence along the boundary of said State Lease No. 16363 the following courses: South 89 degrees 30 minutes 11 seconds West 1,351.40 feet to a point having Coordinates of X = 2,080,332.03 and Y = 312,266.68; North 01 degrees 27 minutes 13 seconds West 2,647.70 feet to a point having Coordinates of X = 2,080,264.87 and Y = 314,913.53; South 89 degrees 30 minutes 43 seconds West 1,353.91 feet to a point having Coordinates of X = 2,078,911.01 and Y = 314,902.00; South 01 degrees 30 minutes 28 seconds East 2,648.38 feet to a point having Coordinates of X = 2,078,980.70 and Y = 312,254.54 and South 01 degrees 25 minutes 44 seconds East 3,975.62 feet to its Southwest corner having Coordinates of X = 2,079,079.84 and Y = 308,280.16; thence West 8,207.40 feet to the point of beginning, containing approximately **165 acres**, all as more particularly outlined on a plat on file in the Office of Mineral Resources, Department of Natural Resources. All bearings, distances and coordinates are based on Louisiana Coordinate System of 1927, (North or South Zone), where applicable.

NOTE: The above description of the Tract nominated for lease has been provided and corrected, where required, exclusively by the nomination party. Any mineral lease selected from this Tract and awarded by the Louisiana State Mineral and Energy Board shall be without warranty of any kind, either express, implied, or statutory, including, but not limited to, the implied warranties of merchantability and fitness for a particular purpose. Should the mineral lease awarded by the Louisiana State Mineral and Energy Board be subsequently modified, cancelled or abrogated due to the existence of conflicting leases, operating agreements, private claims or other future obligations or conditions which may affect all or any portion of the leased Tract, it shall not relieve the Lessee of the obligation to pay any bonus due thereon to the Louisiana State Mineral and Energy Board, nor shall the Louisiana State Mineral and Energy Board be

obligated to refund any consideration paid by the Lessor prior to such modification, cancellation, or abrogation, including, but not limited to, bonuses, rentals and royalties.

NOTE: The State of Louisiana does hereby reserve, and this lease shall be subject to, the imprescriptible right of surface use in the nature of a servitude in favor of the Department of Natural Resources, including its Offices and Commissions, for the sole purpose of implementing, constructing, servicing and maintaining approved coastal zone management and/or restoration projects. Utilization of any and all rights derived under this lease by the mineral lessee, its agents, successors or assigns, shall not interfere with nor hinder the reasonable surface use by the Department of Natural Resources, its Offices or Commissions, as herein above reserved.

Applicant: CONTENDER ENERGY

Bidder	Cash Payment	Price/Acre	Rental	Oil	Gas	Other

Legend

10090011

Active Leases

IMAGERY.DOQQ\_2008\_1M\_CIR

TERREBONNE PARISH

T17S - R13E

BAYOU PENCHANT

SL 16363

P.O.B.

T18S - R13E

SL 19642

0 2,000 Feet



**TRACT 41618 - Portion of Block 47, Breton Sound Area, Plaquemines Parish, Louisiana**

All of the lands now or formerly constituting the beds and bottoms of all water bodies of every nature and description as to which title is vested in the State of Louisiana, together with all islands arising therein and other lands formed by accretion or by reliction, where allowed by law, excepting tax adjudicated lands, and not presently under mineral lease on September 8, 2010, situated in Plaquemines Parish, Louisiana, and more particularly described as follows: Beginning at a point having Coordinates of X = 2,664,850.00 and Y = 292,830.00, said point being the southeast corner of Block 47, Breton Sound Area; thence West 14,750.00 feet along the south line of said Block 47, Breton Sound Area, to a point having Coordinates of X = 2,650,100.00 and Y = 292,830.00, said point being the southwest corner of said Block 47, Breton Sound Area; thence North 7,375.00 feet along the west line of said Block 47, Breton Sound Area, to a point having Coordinates of X = 2,650,100.00 and Y = 300,205.00; thence East 14,750.00 feet to a point having Coordinates of X = 2,664,850.00 and Y = 300,205.00, said point being on the east line of said Block 47, Breton Sound Area; thence South 925.00 feet along the said east line of said Block 47, Breton Sound Area, to a point having Coordinates of X = 2,664,850.00 and Y = 299,280.00, said point being the Northeasternmost corner of Louisiana State Lease No. 16569, as amended; thence the following courses and distances along the boundary of said Louisiana State Lease No. 16569, as amended: North 75 degrees 24 minutes 12 seconds West 1,560.09 feet to a point having Coordinates of X = 2,663,340.26 and Y = 299,673.16; South 50 degrees 54 minutes 23 seconds West 4,448.55 feet to a point having Coordinates of X = 2,659,887.66 and Y = 296,867.96; South 63 degrees 19 minutes 35 seconds East 3,203.23 feet to a point having Coordinates of X = 2,662,750.00 and Y = 295,430.00; East 1,040.01 feet to a point having Coordinates of X = 2,663,790.01 and Y = 295,430.00; and North 23 degrees 40 minutes 37 seconds East 2,639.56 feet to a point having Coordinates of X = 2,664,850.00 and Y = 297,847.38, said point being on the said east line of said Block 47, Breton Sound Area; thence South 5,017.38 feet along said east line of said Block 47, Breton Sound Area, to the point of beginning, containing approximately **2,208.53 acres**, all as more particularly outlined on a plat on file in the Office of Mineral Resources, Department of Natural Resources. All bearings, distances and coordinates are based on Louisiana Coordinate System of 1927, (North or South Zone), where applicable.

NOTE: The above description of the Tract nominated for lease has been provided and corrected, where required, exclusively by the nomination party. Any mineral lease selected from this Tract and awarded by the Louisiana State Mineral and Energy Board shall be without warranty of any kind, either express, implied, or statutory, including, but not limited to, the implied warranties of merchantability and fitness for a particular purpose. Should the mineral lease awarded by the Louisiana State Mineral and Energy Board be subsequently modified, cancelled or abrogated due to the existence of conflicting leases, operating agreements, private claims

or other future obligations or conditions which may affect all or any portion of the leased Tract, it shall not relieve the Lessee of the obligation to pay any bonus due thereon to the Louisiana State Mineral and Energy Board, nor shall the Louisiana State Mineral and Energy Board be obligated to refund any consideration paid by the Lessor prior to such modification, cancellation, or abrogation, including, but not limited to, bonuses, rentals and royalties.

NOTE: This tract is located in an area designated by the Louisiana Legislature or the Wildlife and Fisheries Commission as a public oyster seed ground or reservation, or area of Calcasieu or Sabine Lake. Proposed activities on this tract will be evaluated on a case by case basis. Modifications to proposed project features including, but not limited to, access routes, well sites, flowlines, and appurtenant structures may be required. In addition, compensatory mitigation will be required to offset unavoidable habitat impacts.

NOTE: The State of Louisiana does hereby reserve, and this lease shall be subject to, the imprescriptible right of surface use in the nature of a servitude in favor of the Department of Natural Resources, including its Offices and Commissions, for the sole purpose of implementing, constructing, servicing and maintaining approved coastal zone management and/or restoration projects. Utilization of any and all rights derived under this lease by the mineral lessee, its agents, successors or assigns, shall not interfere with nor hinder the reasonable surface use by the Department of Natural Resources, its Offices or Commissions, as herein above reserved.

Applicant: ROBERT A. SCHROEDER, INC.

Bidder	Cash Payment	Price/Acre	Rental	Oil	Gas	Other

**Legend**

- 10090022
- Blocks
- Active Leases

PLAQUEMINES PARISH

GULF OF MEXICO

BS0047

SL 16569

P.O.B.

BS0050

BRETON SOUND AREA



BS0048

BS0049

**TRACT 41619 - Portion of Block 46, Breton Sound Area, Plaquemines Parish, Louisiana**

All of the lands now or formerly constituting the beds and bottoms of all water bodies of every nature and description as to which title is vested in the State of Louisiana, together with all islands arising therein and other lands formed by accretion or by reliction, where allowed by law, excepting tax adjudicated lands, and not presently under mineral lease on September 8, 2010, situated in Plaquemines Parish, Louisiana, and more particularly described as follows: Beginning at a point having Coordinates of X = 2,664,850.00 and Y = 292,830.00, said point being the Southwest corner of Block 46, Breton Sound Area; thence North 7,375.00 feet along the West line of said Block 46, Breton Sound Area, to a point having Coordinates of X = 2,664,850.00 and Y = 300,205.00; thence East 10,050.00 feet to a point having Coordinates of X = 2,674,900.00 and Y = 300,205.00; thence South 3,475.00 feet to a point having Coordinates of X = 2,674,900.00 and Y = 296,730.00, said point being on the Western boundary of Louisiana State Lease No. 19079; thence South 3,900.00 feet to a point having Coordinates of X = 2,674,900.00 and Y = 292,830.00, said point being on the South line of said Block 46, Breton Sound Area; thence West 10,050.00 feet along the said south line of said Block 46, Breton Sound Area, to the point of beginning, containing approximately **1,701.53 acres**, all as more particularly outlined on a plat on file in the Office of Mineral Resources, Department of Natural Resources. All bearings, distances and coordinates are based on Louisiana Coordinate System of 1927, (North or South Zone), where applicable.

NOTE: The above description of the Tract nominated for lease has been provided and corrected, where required, exclusively by the nomination party. Any mineral lease selected from this Tract and awarded by the Louisiana State Mineral and Energy Board shall be without warranty of any kind, either express, implied, or statutory, including, but not limited to, the implied warranties of merchantability and fitness for a particular purpose. Should the mineral lease awarded by the Louisiana State Mineral and Energy Board be subsequently modified, cancelled or abrogated due to the existence of conflicting leases, operating agreements, private claims or other future obligations or conditions which may affect all or any portion of the leased Tract, it shall not relieve the Lessee of the obligation to pay any bonus due thereon to the Louisiana State Mineral and Energy Board, nor shall the Louisiana State Mineral and Energy Board be obligated to refund any consideration paid by the Lessor prior to such modification, cancellation, or abrogation, including, but not limited to, bonuses, rentals and royalties.

NOTE: The State of Louisiana does hereby reserve, and this lease shall be subject to, the imprescriptible right of surface use in the nature of a servitude in favor of the Department of Natural Resources, including its Offices and Commissions, for the sole purpose of implementing, constructing, servicing and maintaining approved coastal zone management and/or restoration projects. Utilization of any and all rights derived

under this lease by the mineral lessee, its agents, successors or assigns, shall not interfere with nor hinder the reasonable surface use by the Department of Natural Resources, its Offices or Commissions, as herein above reserved.

Applicant: ROBERT A. SCHROEDER, INC.

Bidder	Cash Payment	Price/Acre	Rental	Oil	Gas	Other



**Legend**

- 10090026
- Blocks
- Active Leases

PLAQUEMINES PARISH

BS0046

GULF OF MEXICO

SL 19079

BRETON SOUND AREA

BS0051



BS0047

SL 16569

P.O.B.

BS0050

**TRACT 41620 - Portion of Block 51, Breton Sound Area, Plaquemines Parish, Louisiana**

All of the lands now or formerly constituting the beds and bottoms of all water bodies of every nature and description as to which title is vested in the State of Louisiana, together with all islands arising therein and other lands formed by accretion or by reliction, where allowed by law, excepting tax adjudicated lands, and not presently under mineral lease on September 8, 2010, situated in Plaquemines Parish, Louisiana, and more particularly described as follows: Beginning at a point having Coordinates of X = 2,664,850.00 and Y = 292,830.00, said point being the Northwest corner of Block 51, Breton Sound Area; thence East 13,316.42 feet along the North line of said Block 51, Breton Sound Area, to a point having Coordinates of X = 2,678,166.42 and Y = 292,830.00, said point being on the Western boundary of Louisiana State Lease No. 19050; thence South 7,375.00 feet to a point having Coordinates of X = 2,678,166.42 and Y = 285,455.00; thence West 4,544.59 feet to a point having Coordinates of X = 2,673,621.83 and Y = 285,455.00, said point being on the Eastern boundary of Louisiana State Lease No. 16890; thence the following courses and distances along the boundary of said Louisiana State Lease No. 16890: North 31 degrees 53 minutes 54 seconds East 1,113.09 feet to a point having Coordinates of X = 2,674,210.00 and Y = 286,400.00; North 01 degrees 37 minutes 30 seconds West 1,730.70 feet to a point having Coordinates of X = 2,674,160.92 and Y = 288,130.00; West 1,289.48 feet to a point having Coordinates of X = 2,672,871.44 and Y = 288,130.00; South 73 degrees 14 minutes 31 seconds West 2,393.07 feet to a point having Coordinates of X = 2,670,580.00 and Y = 287,440.00; and South 05 degrees 15 minutes 21 seconds East 1,993.38 feet to a point having Coordinates of X = 2,670,762.60 and Y = 285,455.00; thence West 5,912.60 feet to a point having Coordinates of X = 2,664,850.00 and Y = 285,455.00, said point being on the West line of said Block 51, Breton Sound Area; thence North 7,375.00 feet along the said West line of said Block 51, Breton Sound Area, to the point of beginning, containing approximately **2,061.31 acres**, all as more particularly outlined on a plat on file in the Office of Mineral Resources, Department of Natural Resources. All bearings, distances and coordinates are based on Louisiana Coordinate System of 1927, (North or South Zone), where applicable.

NOTE: The above description of the Tract nominated for lease has been provided and corrected, where required, exclusively by the nomination party. Any mineral lease selected from this Tract and awarded by the Louisiana State Mineral and Energy Board shall be without warranty of any kind, either express, implied, or statutory, including, but not limited to, the implied warranties of merchantability and fitness for a particular purpose. Should the mineral lease awarded by the Louisiana State Mineral and Energy Board be subsequently modified, cancelled or abrogated due to the existence of conflicting leases, operating agreements, private claims or other future obligations or conditions which may affect all or any portion of the leased Tract, it shall not relieve the Lessee of the obligation to pay any bonus due thereon to the Louisiana State Mineral and

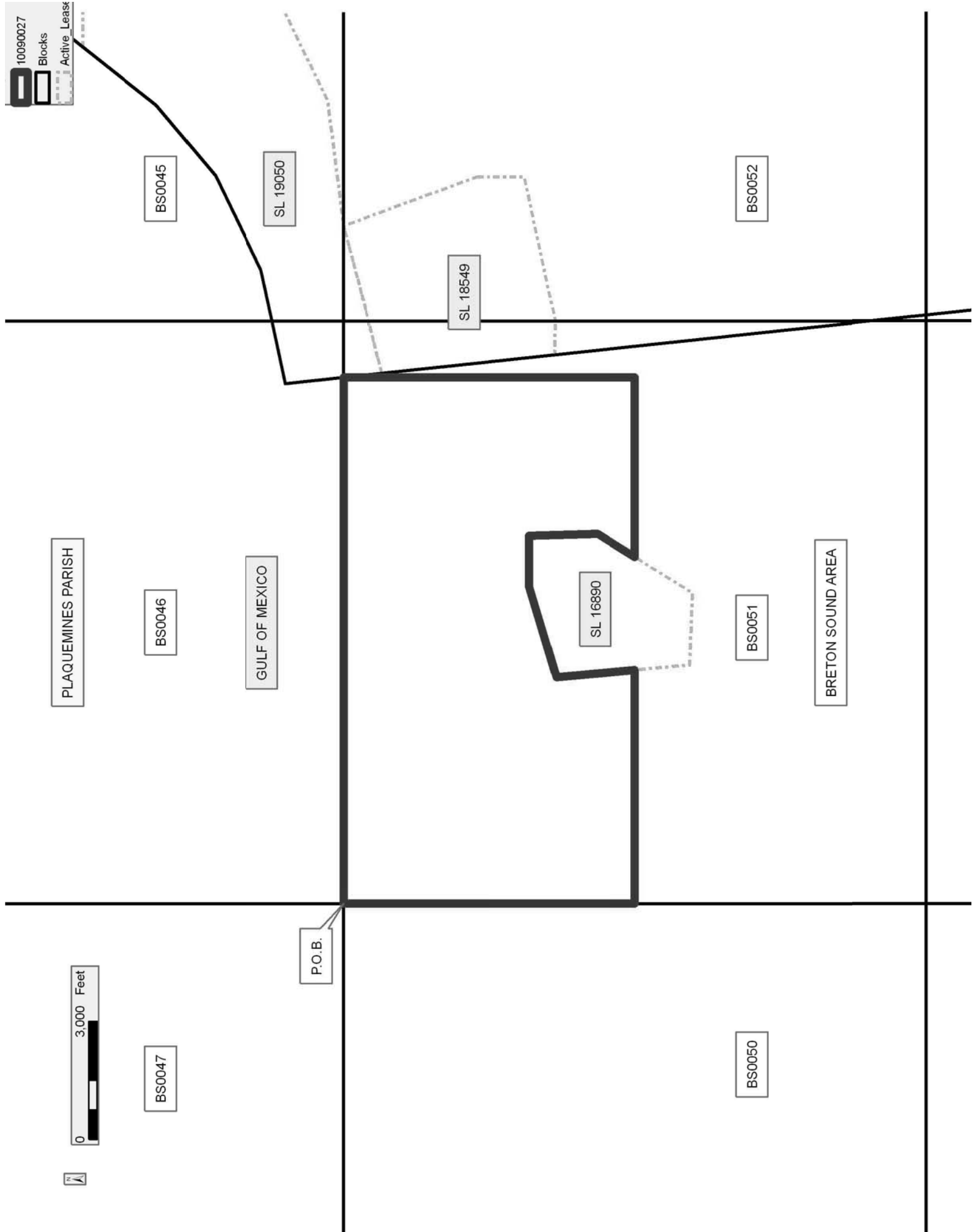
Energy Board, nor shall the Louisiana State Mineral and Energy Board be obligated to refund any consideration paid by the Lessor prior to such modification, cancellation, or abrogation, including, but not limited to, bonuses, rentals and royalties.

NOTE: The State of Louisiana does hereby reserve, and this lease shall be subject to, the imprescriptible right of surface use in the nature of a servitude in favor of the Department of Natural Resources, including its Offices and Commissions, for the sole purpose of implementing, constructing, servicing and maintaining approved coastal zone management and/or restoration projects. Utilization of any and all rights derived under this lease by the mineral lessee, its agents, successors or assigns, shall not interfere with nor hinder the reasonable surface use by the Department of Natural Resources, its Offices or Commissions, as herein above reserved.

Applicant: ROBERT A. SCHROEDER, INC.

Bidder	Cash Payment	Price/Acre	Rental	Oil	Gas	Other

10090027  
 Blocks  
 Active Lease



PLAQUEMINES PARISH

BS00045

SL 19050

BS00052

BS00046

GULF OF MEXICO

SL 18549

SL 16890

BS00051

BRETON SOUND AREA

BS00047

P.O.B.

BS00050

**TRACT 41621 - Portion of Block 50, Breton Sound Area, Plaquemines Parish, Louisiana**

All of the lands now or formerly constituting the beds and bottoms of all water bodies of every nature and description as to which title is vested in the State of Louisiana, together with all islands arising therein and other lands formed by accretion or by reliction, where allowed by law, excepting tax adjudicated lands, and not presently under mineral lease on September 8, 2010, situated in Plaquemines Parish, Louisiana, and more particularly described as follows: Beginning at a point having Coordinates of X = 2,664,850.00 and Y = 292,830.00, said point being the Northeast corner of Block 50, Breton Sound Area; thence South 7,375.00 feet along the East line of said Block 50, Breton Sound Area, to a point having Coordinates of X = 2,664,850.00 and Y = 285,455.00; thence West 14,750.00 feet to a point having Coordinates of X = 2,650,100.00 and Y = 285,455.00, said point being on the West line of said Block 50, Breton Sound Area; thence North 7,375.00 feet along said West line of said Block 50, Breton Sound Area, to a point having Coordinates of X = 2,650,100.00 and Y = 292,830.00, said point being the Northwest corner of Block 50, Breton Sound Area; thence East 14,750.00 feet along the north line of said Block 50, Breton Sound Area, to the point of beginning, containing approximately **2,497.27 acres**, all as more particularly outlined on a plat on file in the Office of Mineral Resources, Department of Natural Resources. All bearings, distances and coordinates are based on Louisiana Coordinate System of 1927, (North or South Zone), where applicable.

NOTE: The above description of the Tract nominated for lease has been provided and corrected, where required, exclusively by the nomination party. Any mineral lease selected from this Tract and awarded by the Louisiana State Mineral and Energy Board shall be without warranty of any kind, either express, implied, or statutory, including, but not limited to, the implied warranties of merchantability and fitness for a particular purpose. Should the mineral lease awarded by the Louisiana State Mineral and Energy Board be subsequently modified, cancelled or abrogated due to the existence of conflicting leases, operating agreements, private claims or other future obligations or conditions which may affect all or any portion of the leased Tract, it shall not relieve the Lessee of the obligation to pay any bonus due thereon to the Louisiana State Mineral and Energy Board, nor shall the Louisiana State Mineral and Energy Board be obligated to refund any consideration paid by the Lessor prior to such modification, cancellation, or abrogation, including, but not limited to, bonuses, rentals and royalties.

NOTE: This tract is located in an area designated by the Louisiana Legislature or the Wildlife and Fisheries Commission as a public oyster seed ground or reservation, or area of Calcasieu or Sabine Lake. Proposed activities on this tract will be evaluated on a case by case basis. Modifications to proposed project features including, but not limited to, access routes, well sites, flowlines, and appurtenant structures may be

required. In addition, compensatory mitigation will be required to offset unavoidable habitat impacts.

NOTE: The State of Louisiana does hereby reserve, and this lease shall be subject to, the imprescriptible right of surface use in the nature of a servitude in favor of the Department of Natural Resources, including its Offices and Commissions, for the sole purpose of implementing, constructing, servicing and maintaining approved coastal zone management and/or restoration projects. Utilization of any and all rights derived under this lease by the mineral lessee, its agents, successors or assigns, shall not interfere with nor hinder the reasonable surface use by the Department of Natural Resources, its Offices or Commissions, as herein above reserved.

Applicant: ROBERT A. SCHROEDER, INC.

Bidder	Cash Payment	Price/Acre	Rental	Oil	Gas	Other

**Legend**  
10090023  
Blocks

BS0046

P.O.B.

BS0051

PLAQUEMINES PARISH

GULF OF MEXICO

BS0047

BRETON SOUND AREA

BS0050



**TRACT 41622 - Portion of Block 51, Breton Sound Area, Plaquemines Parish, Louisiana**

All of the lands now or formerly constituting the beds and bottoms of all water bodies of every nature and description as to which title is vested in the State of Louisiana, together with all islands arising therein and other lands formed by accretion or by reliction, where allowed by law, excepting tax adjudicated lands, and not presently under mineral lease on September 8, 2010, situated in Plaquemines Parish, Louisiana, and more particularly described as follows: Beginning at a point having Coordinates of X = 2,664,850.00 and Y = 278,080.00, said point being the Southwest corner of Block 51, Breton Sound Area; thence North 7,375.00 feet along the West line of said Block 51, Breton Sound Area, to a point having Coordinates of X = 2,664,850.00 and Y = 285,455.00; thence East 5,912.60 feet to a point having Coordinates of X = 2,670,762.60 and Y = 285,455.00, said point being on the Western boundary of Louisiana State Lease No. 16890; thence the following courses and distances along the boundary of said Louisiana State Lease No. 16890: South 05 degrees 15 minutes 21 seconds East 1,390.85 feet to a point having Coordinates of X = 2,670,890.00 and Y = 284,070.00; South 87 degrees 28 minutes 59 seconds East 1,821.76 feet to a point having Coordinates of X = 2,672,710.00 and Y = 283,990.00; and North 31 degrees 53 minutes 54 seconds East 1,725.59 feet to a point having Coordinates of X = 2,673,621.83 and Y = 285,455.00; thence East 4,544.59 feet to a point having Coordinates of X = 2,678,166.42 and Y = 285,455.00; thence South 7,375.00 feet to a point having Coordinates of X = 2,678,166.42 and Y = 278,080.00, said point being on the South line of said Block 51, Breton Sound Area; thence West 13,316.42 feet along said South line of said Block 51, Breton Sound Area, to the point of beginning, containing approximately **2,177.66 acres**, all as more particularly outlined on a plat on file in the Office of Mineral Resources, Department of Natural Resources. All bearings, distances and coordinates are based on Louisiana Coordinate System of 1927, (North or South Zone), where applicable.

NOTE: The above description of the Tract nominated for lease has been provided and corrected, where required, exclusively by the nomination party. Any mineral lease selected from this Tract and awarded by the Louisiana State Mineral and Energy Board shall be without warranty of any kind, either express, implied, or statutory, including, but not limited to, the implied warranties of merchantability and fitness for a particular purpose. Should the mineral lease awarded by the Louisiana State Mineral and Energy Board be subsequently modified, cancelled or abrogated due to the existence of conflicting leases, operating agreements, private claims or other future obligations or conditions which may affect all or any portion of the leased Tract, it shall not relieve the Lessee of the obligation to pay any bonus due thereon to the Louisiana State Mineral and Energy Board, nor shall the Louisiana State Mineral and Energy Board be obligated to refund any consideration paid by the Lessor prior to such modification, cancellation, or abrogation, including, but not limited to, bonuses, rentals and royalties.



NOTE: This tract is located in an area designated by the Louisiana Legislature or the Wildlife and Fisheries Commission as a public oyster seed ground or reservation, or area of Calcasieu or Sabine Lake. Proposed activities on this tract will be evaluated on a case by case basis. Modifications to proposed project features including, but not limited to, access routes, well sites, flowlines, and appurtenant structures may be required. In addition, compensatory mitigation will be required to offset unavoidable habitat impacts.

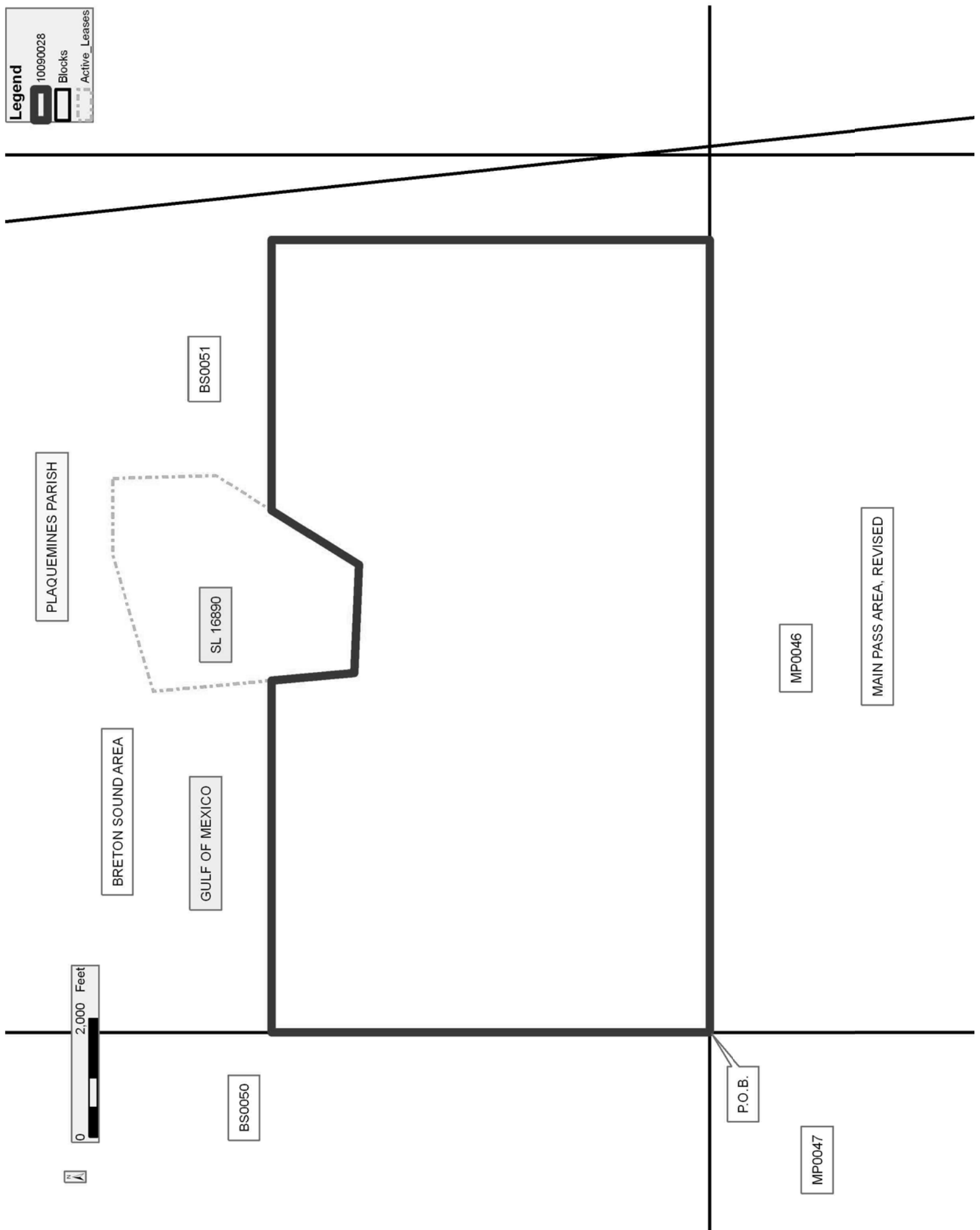
NOTE: The State of Louisiana does hereby reserve, and this lease shall be subject to, the imprescriptible right of surface use in the nature of a servitude in favor of the Department of Natural Resources, including its Offices and Commissions, for the sole purpose of implementing, constructing, servicing and maintaining approved coastal zone management and/or restoration projects. Utilization of any and all rights derived under this lease by the mineral lessee, its agents, successors or assigns, shall not interfere with nor hinder the reasonable surface use by the Department of Natural Resources, its Offices or Commissions, as herein above reserved.

Applicant: ROBERT A. SCHROEDER, INC.

Bidder	Cash Payment	Price/Acre	Rental	Oil	Gas	Other

**Legend**

- 10090028
- Blocks
- Active Leases



**TRACT 41623 - Portion of Block 50, Breton Sound Area, Plaquemines Parish, Louisiana**

All of the lands now or formerly constituting the beds and bottoms of all water bodies of every nature and description as to which title is vested in the State of Louisiana, together with all islands arising therein and other lands formed by accretion or by reliction, where allowed by law, excepting tax adjudicated lands, and not presently under mineral lease on September 8, 2010, situated in Plaquemines Parish, Louisiana, and more particularly described as follows: Beginning at a point having Coordinates of X = 2,664,850.00 and Y = 278,080.00, said point being the Southeast corner of Block 50, Breton Sound Area; thence West 10,500.00 feet along the South line of said Block 50, Breton Sound Area, to a point having Coordinates of X = 2,654,350.00 and Y = 278,080.00, said point being the Southeast corner of Louisiana State Lease No. 16393; thence the following courses and distances along the boundary of said Louisiana State Lease No. 16393: North 2,000.00 feet to a point having Coordinates of X = 2,654,350.00 and Y = 280,080.00; and West 3,800.00 feet to a point having Coordinates of X = 2,650,550.00 and Y = 280,080.00, said point being the Northwestern corner of said Louisiana State Lease No. 16393; thence West 450.00 feet to a point having Coordinates of X = 2,650,100.00 and Y = 280,080.00, said point being on the West line of said Block 50, Breton Sound Area; thence North 5,375.00 feet along said West line of said Block 50, Breton Sound Area, to a point having Coordinates of X = 2,650,100.00 and Y = 285,455.00; thence East 14,750.00 feet to a point having Coordinates of X = 2,664,850.00 and Y = 285,455.00, said point being on the East line of said Block 50, Breton Sound Area; thence South 7,375.00 feet along said East line of said Block 50, Breton Sound Area, to the point of beginning, containing approximately **2,302.14 acres**, all as more particularly outlined on a plat on file in the Office of Mineral Resources, Department of Natural Resources. All bearings, distances and coordinates are based on Louisiana Coordinate System of 1927, (North or South Zone), where applicable.

NOTE: The above description of the Tract nominated for lease has been provided and corrected, where required, exclusively by the nomination party. Any mineral lease selected from this Tract and awarded by the Louisiana State Mineral and Energy Board shall be without warranty of any kind, either express, implied, or statutory, including, but not limited to, the implied warranties of merchantability and fitness for a particular purpose. Should the mineral lease awarded by the Louisiana State Mineral and Energy Board be subsequently modified, cancelled or abrogated due to the existence of conflicting leases, operating agreements, private claims or other future obligations or conditions which may affect all or any portion of the leased Tract, it shall not relieve the Lessee of the obligation to pay any bonus due thereon to the Louisiana State Mineral and Energy Board, nor shall the Louisiana State Mineral and Energy Board be obligated to refund any consideration paid by the Lessor prior to such modification, cancellation, or abrogation, including, but not limited to, bonuses, rentals and royalties.

NOTE: This tract is located in an area designated by the Louisiana Legislature or the Wildlife and Fisheries Commission as a public oyster seed ground or reservation, or area of Calcasieu or Sabine Lake. Proposed activities on this tract will be evaluated on a case by case basis. Modifications to proposed project features including, but not limited to, access routes, well sites, flowlines, and appurtenant structures may be required. In addition, compensatory mitigation will be required to offset unavoidable habitat impacts.

NOTE: The State of Louisiana does hereby reserve, and this lease shall be subject to, the imprescriptible right of surface use in the nature of a servitude in favor of the Department of Natural Resources, including its Offices and Commissions, for the sole purpose of implementing, constructing, servicing and maintaining approved coastal zone management and/or restoration projects. Utilization of any and all rights derived under this lease by the mineral lessee, its agents, successors or assigns, shall not interfere with nor hinder the reasonable surface use by the Department of Natural Resources, its Offices or Commissions, as herein above reserved.

Applicant: ROBERT A. SCHROEDER, INC.

Bidder	Cash Payment	Price/Acre	Rental	Oil	Gas	Other

**Legend**

-  10090024
-  Blocks
-  Active Leases

PLAQUEMINES PARISH

GULF OF MEXICO

BRETON SOUND AREA

BS0050

MAIN PASS AREA, REVISED

MP0047

P.O.B.

SL 16393

SL 16392



**TRACT 41624 - Portion of Block 47, Main Pass Area, Revised, Plaquemines Parish, Louisiana**

All of the lands now or formerly constituting the beds and bottoms of all water bodies of every nature and description as to which title is vested in the State of Louisiana, together with all islands arising therein and other lands formed by accretion or by reliction, where allowed by law, excepting tax adjudicated lands, and not presently under mineral lease on September 8, 2010, situated in Plaquemines Parish, Louisiana, and more particularly described as follows: Beginning at a point having Coordinates of X = 2,664,850.00 and Y = 278,080.00, said point being the Northeast corner of Block 47, Main Pass Area Revised; thence South 6,600.00 feet along the East line of said Block 47, Main Pass Area Revised, to a point having Coordinates of X = 2,664,850.00 and Y = 271,480.00; thence West 4,500.00 feet to a point having Coordinates of X = 2,660,350.00 and Y = 271,480.00, said point being the Northeast corner of Louisiana State Lease No. 1268, as amended; thence West 4,300.00 feet along the Northern boundary of said Louisiana State Lease No. 1268, as amended, to a point having Coordinates of X = 2,656,050.00 and Y = 271,480.00; thence North 24 degrees 40 minutes 37 seconds West 1,771.85 feet to a point having Coordinates of X = 2,655,310.25 and Y = 273,090.04, said point being the Southeasternmost corner of Louisiana State Lease No. 16570, as amended; thence North 24 degrees 40 minutes 37 seconds West 2,330.00 feet along the Eastern boundary of said Louisiana State Lease No. 16570, as amended, to a point having Coordinates of X = 2,654,350.00 and Y = 275,180.00, said point being a Southeastern corner of Louisiana State Lease No. 16392; thence North 2,900.00 feet along the Eastern boundary of said Louisiana State Lease No. 16392 to a point having Coordinates of X = 2,654,350.00 and Y = 278,080.00, said point being on the North line of said Block 47, Main Pass Area Revised; thence East 10,500.00 feet along said North line of said Block 47, Main Pass Area Revised, to the point of beginning, containing approximately **1,518.71 acres**, all as more particularly outlined on a plat on file in the Office of Mineral Resources, Department of Natural Resources. All bearings, distances and coordinates are based on Louisiana Coordinate System of 1927, (North or South Zone), where applicable.

NOTE: The above description of the Tract nominated for lease has been provided and corrected, where required, exclusively by the nomination party. Any mineral lease selected from this Tract and awarded by the Louisiana State Mineral and Energy Board shall be without warranty of any kind, either express, implied, or statutory, including, but not limited to, the implied warranties of merchantability and fitness for a particular purpose. Should the mineral lease awarded by the Louisiana State Mineral and Energy Board be subsequently modified, cancelled or abrogated due to the existence of conflicting leases, operating agreements, private claims or other future obligations or conditions which may affect all or any portion of the leased Tract, it shall not relieve the Lessee of the obligation to pay any bonus due thereon to the Louisiana State Mineral and Energy Board, nor shall the Louisiana State Mineral and Energy Board be

obligated to refund any consideration paid by the Lessor prior to such modification, cancellation, or abrogation, including, but not limited to, bonuses, rentals and royalties.

NOTE: This tract is located in an area designated by the Louisiana Legislature or the Wildlife and Fisheries Commission as a public oyster seed ground or reservation, or area of Calcasieu or Sabine Lake. Proposed activities on this tract will be evaluated on a case by case basis. Modifications to proposed project features including, but not limited to, access routes, well sites, flowlines, and appurtenant structures may be required. In addition, compensatory mitigation will be required to offset unavoidable habitat impacts.

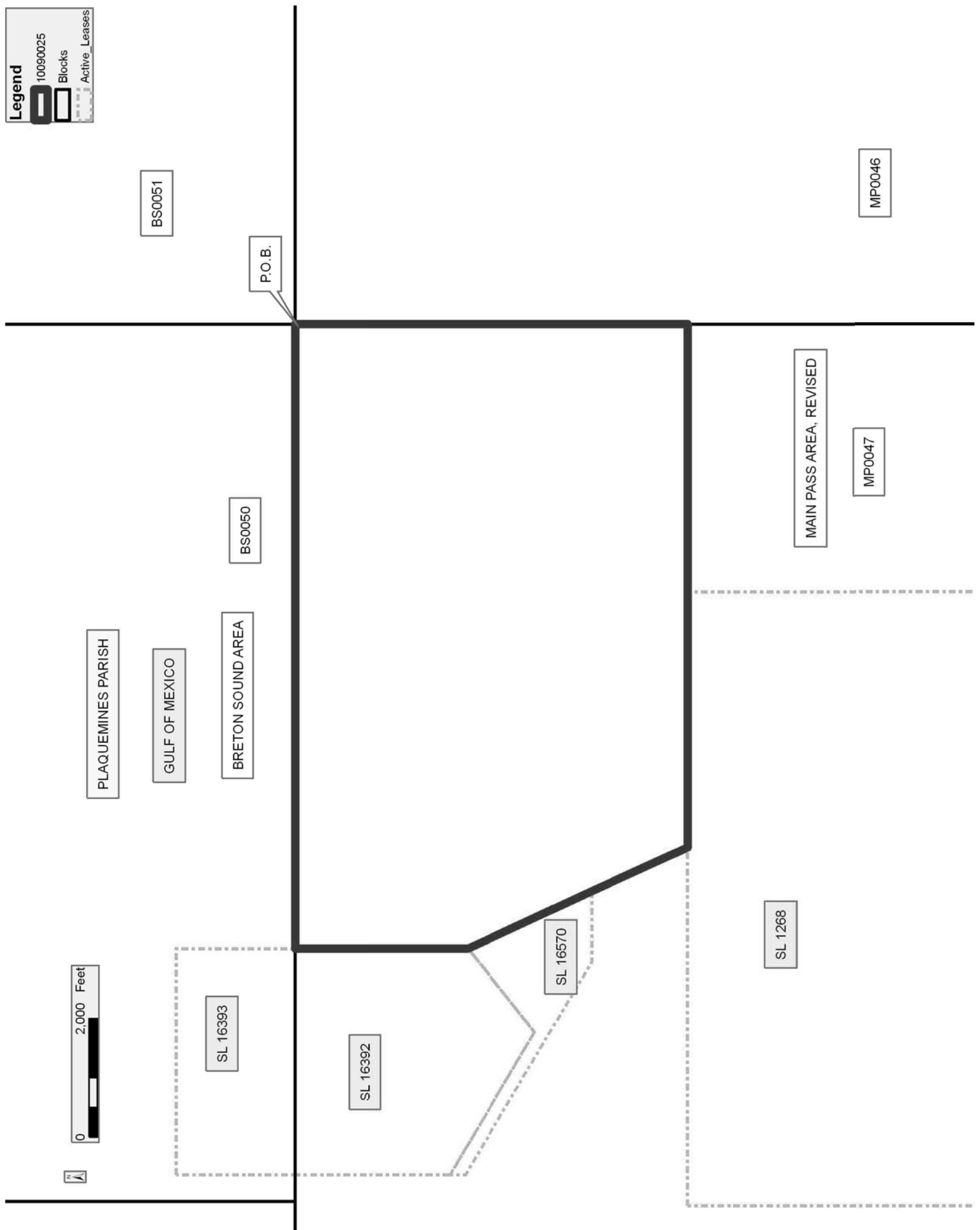
NOTE: The State of Louisiana does hereby reserve, and this lease shall be subject to, the imprescriptible right of surface use in the nature of a servitude in favor of the Department of Natural Resources, including its Offices and Commissions, for the sole purpose of implementing, constructing, servicing and maintaining approved coastal zone management and/or restoration projects. Utilization of any and all rights derived under this lease by the mineral lessee, its agents, successors or assigns, shall not interfere with nor hinder the reasonable surface use by the Department of Natural Resources, its Offices or Commissions, as herein above reserved.

Applicant: ROBERT A. SCHROEDER, INC.

Bidder	Cash Payment	Price/Acre	Rental	Oil	Gas	Other

**Legend**

-  10090025
-  Blocks
-  Active Leases



Office of Mineral Resources, Acres: 1518.71 Tract Number: 41624



**TRACT 41625 - Portion of Block 46, Main Pass Area, Revised, Plaquemines Parish, Louisiana**

All of the lands now or formerly constituting the beds and bottoms of all water bodies of every nature and description as to which title is vested in the State of Louisiana, together with all islands arising therein and other lands formed by accretion or by reliction, where allowed by law, excepting tax adjudicated lands, and not presently under mineral lease on September 8, 2010, situated in Plaquemines Parish, Louisiana, and more particularly described as follows: Beginning at a point having Coordinates of X = 2,664,850.00 and Y = 278,080.00, said point being the Northwest corner of Block 46, Main Pass Area Revised; thence East 13,316.42 feet along the North line of said Block 46, Main Pass Area Revised, to a point having Coordinates of X = 2,678,166.42 and Y = 278,080.00; thence South 6,600.00 feet to a point having Coordinates of X = 2,678,166.42 and Y = 271,480.00; thence West 13,316.42 feet to a point having Coordinates of X = 2,664,850.00 and Y = 271,480.00, said point being on the West line of said Block 46, Main Pass Area Revised; thence North 6,600.00 feet along said West line of said Block 46, Main Pass Area Revised, to the point of beginning, containing approximately **2,017.64 acres**, all as more particularly outlined on a plat on file in the Office of Mineral Resources, Department of Natural Resources. All bearings, distances and coordinates are based on Louisiana Coordinate System of 1927, (North or South Zone), where applicable.

NOTE: The above description of the Tract nominated for lease has been provided and corrected, where required, exclusively by the nomination party. Any mineral lease selected from this Tract and awarded by the Louisiana State Mineral and Energy Board shall be without warranty of any kind, either express, implied, or statutory, including, but not limited to, the implied warranties of merchantability and fitness for a particular purpose. Should the mineral lease awarded by the Louisiana State Mineral and Energy Board be subsequently modified, cancelled or abrogated due to the existence of conflicting leases, operating agreements, private claims or other future obligations or conditions which may affect all or any portion of the leased Tract, it shall not relieve the Lessee of the obligation to pay any bonus due thereon to the Louisiana State Mineral and Energy Board, nor shall the Louisiana State Mineral and Energy Board be obligated to refund any consideration paid by the Lessor prior to such modification, cancellation, or abrogation, including, but not limited to, bonuses, rentals and royalties.

NOTE: This tract is located in an area designated by the Louisiana Legislature or the Wildlife and Fisheries Commission as a public oyster seed ground or reservation, or area of Calcasieu or Sabine Lake. Proposed activities on this tract will be evaluated on a case by case basis. Modifications to proposed project features including, but not limited to, access routes, well sites, flowlines, and appurtenant structures may be required. In addition, compensatory mitigation will be required to offset unavoidable habitat impacts.

NOTE: The State of Louisiana does hereby reserve, and this lease shall be subject to, the imprescriptible right of surface use in the nature of a servitude in favor of the Department of Natural Resources, including its Offices and Commissions, for the sole purpose of implementing, constructing, servicing and maintaining approved coastal zone management and/or restoration projects. Utilization of any and all rights derived under this lease by the mineral lessee, its agents, successors or assigns, shall not interfere with nor hinder the reasonable surface use by the Department of Natural Resources, its Offices or Commissions, as herein above reserved.

Applicant: ROBERT A. SCHROEDER, INC.

Bidder	Cash Payment	Price/Acre	Rental	Oil	Gas	Other

**Legend**  
10090029  
Blocks

PLAQUEMINES PARISH

GULF OF MEXICO

BRETON SOUND AREA

BS0051

MP0046

MAIN PASS AREA, REVISED

P.O.B.



**TRACT 41626 - Portion of Blocks 36, 49, and 50, Main Pass Area, Revised, Plaquemines Parish, Louisiana**

All of the lands now or formerly constituting the beds and bottoms of all water bodies of every nature and description as to which title is vested in the State of Louisiana, together with all islands arising therein and other lands formed by accretion or by reliction, where allowed by law, excepting tax adjudicated lands, and not presently under mineral lease on September 8, 2010, situated in Plaquemines Parish, Louisiana, and more particularly described as follows: Beginning at a point within Block 35, Main Pass Area, Revised, having Coordinates of X = 2,620,595.75 and Y = 278,081.24; thence South 89 degrees 59 minutes 52 seconds East 9,907.25 feet to a point within Block 36, Main Pass Area, Revised, having Coordinates of X = 2,630,503.00 and Y = 278,080.88; thence South 41.88 feet to a point within Block 49, Main Pass Area, Revised, said point being the Northwest corner of State Lease No. 19445 having Coordinates of X = 2,630,503.00 and Y = 278,039.00; thence South 944.00 feet along the West boundary said State Lease No. 19445 to its Southwest corner, also being the Northwest corner of State Lease No. 20160 having Coordinates of X = 2,630,503.00 and Y = 277,095.00; thence South 951.00 feet along the West boundary of said State Lease No. 20160 to its Southwest corner having Coordinates of X = 2,630,503.00 and Y = 276,144.00; thence South 9,999.00 feet to a point having Coordinates of X = 2,630,503.00 and Y = 266,145.00; thence West 3,718.00 feet to a point on the East boundary of State Lease No. 20363 having Coordinates of X = 2,626,785.00 and Y = 266,145.00; thence along the boundary of said State Lease No. 20363 the following courses: North 11 degrees 32 minutes 36 seconds East 2,213.78 feet to a point having Coordinates of X = 2,627,228.00 and Y = 268,314.00; North 75 degrees 03 minutes 24 seconds West 3,094.66 feet to a point having Coordinates of X = 2,624,238.00 and Y = 269,112.00 and South 25 degrees 04 minutes 00 seconds West 87.12 feet to its Westernmost corner, also being a point on the North boundary of State Lease No. 19706 having Coordinates of X = 2,624,201.09 and Y = 269,033.09; thence along the boundary of said State Lease No. 19706 the following courses: North 70 degrees 51 minutes 15 seconds West 132.46 feet to a point having Coordinates of X = 2,624,075.96 and Y = 269,076.53; North 85 degrees 19 minutes 28 seconds West 914.09 feet to a point having Coordinates of X = 2,623,164.91 and Y = 269,151.04; South 15 degrees 03 minutes 09 seconds West 1,622.89 feet to a point having Coordinates of X = 2,622,743.44 and Y = 267,583.83; North 88 degrees 07 minutes 39 seconds West 439.79 feet to a point having Coordinates of X = 2,622,303.88 and Y = 267,598.20 and South 04 degrees 13 minutes 31 seconds West 1,703.64 feet to its Southwest corner, said to be a point on the Northern boundary of the Price Case (Tract A-1) having Coordinates of X = 2,622,178.36 and Y = 265,899.19; thence West 1,620.33 feet to a point within Block 50, Main Pass Area, Revised, having Coordinates of X = 2,620,558.03 and Y = 265,899.19; thence North 00 degrees 10 minutes 39 seconds East 12,182.11 feet to the point of beginning, **LESS AND EXCEPT** that portion, if any, of the Price Case that may lie within the above described tract, containing approximately **2,404 acres**, all as more particularly outlined on a plat on file in the Office

of Mineral Resources, Department of Natural Resources. All bearings, distances and coordinates are based on Louisiana Coordinate System of 1927, (North or South Zone), where applicable.

NOTE: The above description of the Tract nominated for lease has been provided and corrected, where required, exclusively by the nomination party. Any mineral lease selected from this Tract and awarded by the Louisiana State Mineral and Energy Board shall be without warranty of any kind, either express, implied, or statutory, including, but not limited to, the implied warranties of merchantability and fitness for a particular purpose. Should the mineral lease awarded by the Louisiana State Mineral and Energy Board be subsequently modified, cancelled or abrogated due to the existence of conflicting leases, operating agreements, private claims or other future obligations or conditions which may affect all or any portion of the leased Tract, it shall not relieve the Lessee of the obligation to pay any bonus due thereon to the Louisiana State Mineral and Energy Board, nor shall the Louisiana State Mineral and Energy Board be obligated to refund any consideration paid by the Lessor prior to such modification, cancellation, or abrogation, including, but not limited to, bonuses, rentals and royalties.

NOTE: This tract is located in an area designated by the Louisiana Legislature or the Wildlife and Fisheries Commission as a public oyster seed ground or reservation, or area of Calcasieu or Sabine Lake. Proposed activities on this tract will be evaluated on a case by case basis. Modifications to proposed project features including, but not limited to, access routes, well sites, flowlines, and appurtenant structures may be required. In addition, compensatory mitigation will be required to offset unavoidable habitat impacts.

NOTE: The State of Louisiana does hereby reserve, and this lease shall be subject to, the imprescriptible right of surface use in the nature of a servitude in favor of the Department of Natural Resources, including its Offices and Commissions, for the sole purpose of implementing, constructing, servicing and maintaining approved coastal zone management and/or restoration projects. Utilization of any and all rights derived under this lease by the mineral lessee, its agents, successors or assigns, shall not interfere with nor hinder the reasonable surface use by the Department of Natural Resources, its Offices or Commissions, as herein above reserved.

Applicant: CYPRESS ENERGY CORPORATION

Bidder	Cash Payment	Price/Acre	Rental	Oil	Gas	Other

10090015

Blocks

Active\_Leases

IMAGERY.DOQQ\_2008\_1M\_CII

PLAQUEMINES PARISH

MAIN PASS AREA, REVISED

GULF OF MEXICO

MP0036

P.O.B.

MP0035

MP0050

MP0049

SL 19445

SL 19446

SL 20160

SL 19706

SL 20363

0 3,000 Feet

