

TRACT 41649 - Lasalle and Rapides Parishes, Louisiana

All of the lands now or formerly constituting the beds and bottoms of all water bodies of every nature and description as to which title is vested in the State of Louisiana, together with all islands arising therein and other lands formed by accretion or by reliction, where allowed by law, excepting tax adjudicated lands, and not presently under mineral lease on October 13, 2010, situated in Lasalle and Rapides Parishes, Louisiana, and more particularly described as follows: Beginning at a point having Coordinates of X = 2,105,805.00 and Y = 267,920.00; thence East 10,720.00 feet to a point having Coordinates of X = 2,116,525.00 and Y = 267,920.00; thence South 5,520.00 feet to a point having Coordinates of X = 2,116,525.00 and Y = 262,400.00; thence West 10,720.00 feet to a point having Coordinates of X = 2,105,805.00 and Y = 262,400.00; thence North 5,520.00 feet to the point of beginning, **LESS AND EXCEPT** any portion of the above described tract that may lie within Section 16 Township 5 North Range 3 East, Rapides and LaSalle Parishes, and also **LESS AND EXCEPT** the Western half of Saline Bayou to its center line (This tract only contains the Eastern half of Saline Bayou to its center line which lies within the boundary of Dewey W. Wills Wildlife Management Area and does not contain any land within the boundary of this Wildlife Management Area), containing approximately **13.5 acres**, all as more particularly outlined on a plat on file in the Office of Mineral Resources, Department of Natural Resources. All bearings, distances and coordinates are based on Louisiana Coordinate System of 1927, (North or South Zone), where applicable.

NOTE: The above description of the Tract nominated for lease has been provided and corrected, where required, exclusively by the nomination party. Any mineral lease selected from this Tract and awarded by the Louisiana State Mineral and Energy Board shall be without warranty of any kind, either express, implied, or statutory, including, but not limited to, the implied warranties of merchantability and fitness for a particular purpose. Should the mineral lease awarded by the Louisiana State Mineral and Energy Board be subsequently modified, cancelled or abrogated due to the existence of conflicting leases, operating agreements, private claims or other future obligations or conditions which may affect all or any portion of the leased Tract, it shall not relieve the Lessee of the obligation to pay any bonus due thereon to the Louisiana State Mineral and Energy Board, nor shall the Louisiana State Mineral and Energy Board be obligated to refund any consideration paid by the Lessor prior to such modification, cancellation, or abrogation, including, but not limited to, bonuses, rentals and royalties.

NOTE: The mineral lease is located in the Dewey W. Wills WMA under the jurisdiction of the Louisiana Department of Wildlife and Fisheries which has promulgated rules and regulations for the protection of game and wildlife on the aforesaid Tract and, therefore, shall be subject to said rules and regulations, a copy of which shall be attached to the mineral lease. In addition to the specific rules and regulations applicable, the following shall apply regarding operations under this mineral lease:

NOTE: No activities will be allowed without written authorization from the Louisiana Department of Wildlife and Fisheries.

NOTE: Proposed projects will be evaluated on a case by case basis. Modifications to proposed project features including but not limited to access routes, spoil placement, well sites, flowlines and appurtenant structures may be required by the Department of Wildlife and Fisheries.

NOTE: Compliance with the said WMA regulations will be required unless otherwise specified by the Department of Wildlife and Fisheries.

NOTE: Compensatory mitigation will be required to offset unavoidable wetland impacts.

NOTE: Removal of all structures, facilities and equipment will be required within 120 days of abandonment unless otherwise agreed to in writing by the Louisiana Department of Wildlife and Fisheries.

NOTE: No activities will be allowed during the hunting season unless approved by the Department.

NOTE: Prior to submitting applications for wetland permits to Federal and State permitting agencies the leaseholder shall coordinate project details with the Department of Wildlife and Fisheries. Contact person for the Department will be Mike Windham at (504) 284-5268.

NOTE: There will be a minimum bonus of \$150.00 per acre and a minimum royalty of 25%.

Applicant: THEOPHILUS OIL, GAS & LAND SERVICES, LLC

Bidder	Cash Payment	Price/Acre	Rental	Oil	Gas	Other

Legend

10100037

Wildlife

Counties

IMAGERY.DOQQ_2004_1M

0 2,000 Feet

LA SALLE PARISH

T5N - R3E

DEWEY W WILLS WMA

BIG SALINE BAYOU

T5N - R3E

P.O.B.

TRACT 41650 - Lasalle and Rapides Parishes, Louisiana

All of the lands now or formerly constituting the beds and bottoms of all water bodies of every nature and description as to which title is vested in the State of Louisiana, together with all islands arising therein and other lands formed by accretion or by reliction, where allowed by law, excepting tax adjudicated lands, and not presently under mineral lease on October 13, 2010, situated in Lasalle and Rapides Parishes, Louisiana, and more particularly described as follows: Beginning at a point having Coordinates of X = 2,105,805.00 and Y = 267,920.00; thence East 10,720.00 feet to a point having Coordinates of X = 2,116,525.00 and Y = 267,920.00; thence South 5,520.00 feet to a point having Coordinates of X = 2,116,525.00 and Y = 262,400.00; thence West 10,720.00 feet to a point having Coordinates of X = 2,105,805.00 and Y = 262,400.00; thence North 5,520.00 feet to the point of beginning, **LESS AND EXCEPT** any portion of the above described tract that may lie within Section 16 Township 5 North Range 3 East, Rapides and LaSalle Parishes, also **LESS AND EXCEPT** the Eastern half of Saline Bayou to its center line and any land within the boundary of the Dewey W. Wills Wildlife Management Area, (This tract only contains the Western half of Saline Bayou to its center line), containing approximately **13.5 acres**, all as more particularly outlined on a plat on file in the Office of Mineral Resources, Department of Natural Resources. All bearings, distances and coordinates are based on Louisiana Coordinate System of 1927, (North or South Zone), where applicable.

NOTE: The above description of the Tract nominated for lease has been provided and corrected, where required, exclusively by the nomination party. Any mineral lease selected from this Tract and awarded by the Louisiana State Mineral and Energy Board shall be without warranty of any kind, either express, implied, or statutory, including, but not limited to, the implied warranties of merchantability and fitness for a particular purpose. Should the mineral lease awarded by the Louisiana State Mineral and Energy Board be subsequently modified, cancelled or abrogated due to the existence of conflicting leases, operating agreements, private claims or other future obligations or conditions which may affect all or any portion of the leased Tract, it shall not relieve the Lessee of the obligation to pay any bonus due thereon to the Louisiana State Mineral and Energy Board, nor shall the Louisiana State Mineral and Energy Board be obligated to refund any consideration paid by the Lessor prior to such modification, cancellation, or abrogation, including, but not limited to, bonuses, rentals and royalties.

Applicant: THEOPHILUS OIL, GAS & LAND SERVICES, LLC

Bidder	Cash Payment	Price/Acre	Rental	Oil	Gas	Other

Legend

10100038

Wildlife

Counties

Sections

IMAGERY.DOQQ_2004_1M

0 2,000 Feet



LA SALLE PARISH

T5N - R3E

SEC 16

P.O.B.

BIG SALINE BAYOU

DEWEY W WILLS WMA

TRACT 41651 - Acadia Parish, Louisiana

All of the lands now or formerly constituting the beds and bottoms of all water bodies of every nature and description as to which title is vested in the State of Louisiana, together with all islands arising therein and other lands formed by accretion or by reliction, where allowed by law, excepting tax adjudicated lands, and not presently under mineral lease on October 13, 2010, situated in Acadia Parish, Louisiana, and more particularly described as follows: Beginning at a point having Coordinates of X = 1,620,320.00 and Y = 645,640.00; thence East 9,520.00 feet to a point having Coordinates of X = 1,629,840.00 and Y = 645,640.00; thence South 13,500.00 feet to a point having Coordinates of X = 1,629,840.00 and Y = 632,140.00; thence West 9,520.00 feet to a point having Coordinates of X = 1,620,320.00 and Y = 632,140.00; thence North 13,500.00 feet to the Point of Beginning, containing approximately **41 acres**, all as more particularly outlined on a plat on file in the Office of Mineral Resources, Department of Natural Resources. All bearings, distances and coordinates are based on Louisiana Coordinate System of 1927, (North or South Zone), where applicable.

NOTE: The above description of the Tract nominated for lease has been provided and corrected, where required, exclusively by the nomination party. Any mineral lease selected from this Tract and awarded by the Louisiana State Mineral and Energy Board shall be without warranty of any kind, either express, implied, or statutory, including, but not limited to, the implied warranties of merchantability and fitness for a particular purpose. Should the mineral lease awarded by the Louisiana State Mineral and Energy Board be subsequently modified, cancelled or abrogated due to the existence of conflicting leases, operating agreements, private claims or other future obligations or conditions which may affect all or any portion of the leased Tract, it shall not relieve the Lessee of the obligation to pay any bonus due thereon to the Louisiana State Mineral and Energy Board, nor shall the Louisiana State Mineral and Energy Board be obligated to refund any consideration paid by the Lessor prior to such modification, cancellation, or abrogation, including, but not limited to, bonuses, rentals and royalties.

Applicant: ORBIT ENERGY, INC.

Bidder	Cash Payment	Price/Acre	Rental	Oil	Gas	Other

Legend

10100008

IMAGERY.DOQQ_2008_1M_CIR

0 3,000 Feet

ACADIA PARISH

T7S - R1W

T7S - R2W

P.O.B.

BAYOU DES CANNES

TRACT 41652 - Assumption Parish, Louisiana

All of the lands now or formerly constituting the beds and bottoms of all water bodies of every nature and description as to which title is vested in the State of Louisiana, together with all islands arising therein and other lands formed by accretion or by reliction, where allowed by law, excepting tax adjudicated lands, and not presently under mineral lease on October 13, 2010, situated in Assumption Parish, Louisiana, and more particularly described as follows: Beginning at a point having Coordinates of X = 2,061,452.23 and Y = 502,627.73; thence North 88 degrees 58 minutes 49 seconds East 5,233.65 feet to a point having Coordinates X = 2,066,685.05 and Y = 502,720.86; thence South 00 degrees 46 minutes 42 seconds East 15,881.93 feet to a point having Coordinates X = 2,066,900.80 and Y = 486,840.40; thence South 89 degrees 20 minutes 10 seconds West 5,187.83 feet to a point having Coordinates X = 2,061,713.31 and Y = 486,780.29; thence North 00 degrees 56 minutes 38 seconds West 15,849.59 feet to the point of beginning, **LESS AND EXCEPT** all of State Lease No. 14142, as amended, that lies within the above described tract, containing approximately **36 acres**, all as more particularly outlined on a plat on file in the Office of Mineral Resources, Department of Natural Resources. All bearings, distances and coordinates are based on Louisiana Coordinate System of 1927, (North or South Zone), where applicable.

NOTE: The above description of the Tract nominated for lease has been provided and corrected, where required, exclusively by the nomination party. Any mineral lease selected from this Tract and awarded by the Louisiana State Mineral and Energy Board shall be without warranty of any kind, either express, implied, or statutory, including, but not limited to, the implied warranties of merchantability and fitness for a particular purpose. Should the mineral lease awarded by the Louisiana State Mineral and Energy Board be subsequently modified, cancelled or abrogated due to the existence of conflicting leases, operating agreements, private claims or other future obligations or conditions which may affect all or any portion of the leased Tract, it shall not relieve the Lessee of the obligation to pay any bonus due thereon to the Louisiana State Mineral and Energy Board, nor shall the Louisiana State Mineral and Energy Board be obligated to refund any consideration paid by the Lessor prior to such modification, cancellation, or abrogation, including, but not limited to, bonuses, rentals and royalties.

Applicant: DELTA LANDS EXPLORATION, INC.

Bidder	Cash Payment	Price/Acre	Rental	Oil	Gas	Other

Legend

10100035

Active Leases

IMAGERY.DOQQ_2008_1M_CIR

ASSUMPTION PARISH

T12S - R13E

P.O.B.

SL 14142

GRAND BAYOU

0 3,000 Feet



TRACT 41653 - Iberia and Vermilion Parishes, Louisiana

All of the lands now or formerly constituting the beds and bottoms of all water bodies of every nature and description as to which title is vested in the State of Louisiana, together with all islands arising therein and other lands formed by accretion or by reliction, where allowed by law, excepting tax adjudicated lands, and not presently under mineral lease on October 13, 2010, situated in Iberia and Vermilion Parishes, Louisiana, and more particularly described as follows: Beginning at the Westernmost Southwest corner of State Lease No. 14807, as amended, having Coordinates of X = 1,790,000.00 and Y = 477,659.77; thence East 2,875.00 feet along the Southern boundary of said State Lease No. 14807 to a point having Coordinates of X = 1,792,875.00 and Y = 477,659.77; thence South 200.21 feet to a point having Coordinates of X = 1,792,875.00 and Y = 477,459.56; thence South 60 degrees 00 minutes 00 seconds East 2,979.13 feet to a point having Coordinates of X = 1,795,455.00 and Y = 475,970.00; thence East 1,128.62 feet to a point having Coordinates of X = 1,796,583.62 and Y = 475,970.00; thence South 3,530.00 feet to a point having Coordinates of X = 1,796,583.62 and Y = 472,440.00; thence West 6,583.62 feet to a point having Coordinates of X = 1,790,000.00 and Y = 472,440.00; thence North 5,219.77 feet to the point of beginning, containing approximately **258 acres**, all as more particularly outlined on a plat on file in the Office of Mineral Resources, Department of Natural Resources. All bearings, distances and coordinates are based on Louisiana Coordinate System of 1927, (North or South Zone), where applicable.

NOTE: The above description of the Tract nominated for lease has been provided and corrected, where required, exclusively by the nomination party. Any mineral lease selected from this Tract and awarded by the Louisiana State Mineral and Energy Board shall be without warranty of any kind, either express, implied, or statutory, including, but not limited to, the implied warranties of merchantability and fitness for a particular purpose. Should the mineral lease awarded by the Louisiana State Mineral and Energy Board be subsequently modified, cancelled or abrogated due to the existence of conflicting leases, operating agreements, private claims or other future obligations or conditions which may affect all or any portion of the leased Tract, it shall not relieve the Lessee of the obligation to pay any bonus due thereon to the Louisiana State Mineral and Energy Board, nor shall the Louisiana State Mineral and Energy Board be obligated to refund any consideration paid by the Lessor prior to such modification, cancellation, or abrogation, including, but not limited to, bonuses, rentals and royalties.

Applicant: FLEETWOOD RESOURCES, INC.

Bidder	Cash Payment	Price/Acre	Rental	Oil	Gas	Other

Legend

- 10100028
- Active_Leases
- Counties

IMAGERY.DOQQ_2008_1M_CIR

IBERIA PARISH

LAKE PEIGNEUR

SL 14807

VERMILION PARISH

P.O.B.

T12S - R4E



TRACT 41654 - Cameron Parish, Louisiana

All of the lands now or formerly constituting the beds and bottoms of all water bodies of every nature and description the title of which vests in the State of Louisiana, together with all islands arising therein and other lands formed by accretion or by reliction, where allowed by law, excepting tax adjudicated lands, and not presently under mineral lease on October 13, 2010, situated in Cameron Parish, Louisiana, and more particularly described as follows: Beginning at a point having Coordinates of X = 1,215,800.00 and Y = 438,900.00; thence West 8,920.00 feet to a point having Coordinates of X = 1,206,880.00 and Y = 438,900.00; thence North 686.00 feet to the Southeast corner of State Lease No. 19067 having Coordinates of X = 1,206,880.00 and Y = 439,586.00; thence North 3,354.00 feet along the Eastern boundary of said State Lease No. 19067 to the Southwest corner of State Lease No. 19068 having Coordinates of X = 1,206,880.00 and Y = 442,940.00; thence along the boundary of said State Lease No. 19068, the following courses: East 6,695.00 feet to a point having Coordinates of X = 1,213,575.00 and Y = 442,940.00; North 4,705.00 feet to a point having Coordinates of X = 1,213,575.00 and Y = 447,645.00; West 4,508.00 feet to a point having Coordinates of X = 1,209,067.00 and Y = 447,645.00; South 2,465.00 feet to a point having Coordinates of X = 1,209,067.00 and Y = 445,180.00; and West 2,187.00 feet to a point on the Eastern boundary of said State Lease No. 19067 having Coordinates of X = 1,206,880.00 and Y = 445,180.00; thence along the boundary of said State Lease No. 19067, the following courses: North 1,745.00 feet to a point having Coordinates of X = 1,206,880.00 and Y = 446,925.00 and West 3,292.00 feet to the Northeast corner of State Lease No. 20297 having Coordinates of X = 1,203,588.00 and Y = 446,925.00; thence West 3,165.65 feet along the Northern boundary of said State Lease No. 20297 to its Northwest corner also being a point on the Texas-Louisiana boundary having Coordinates of X = 1,200,422.34 and Y = 446,925.00; thence along the Texas-Louisiana boundary the following courses: North 56 degrees 32 minutes 34 seconds East 1,387.59 feet to a point having Coordinates of X = 1,201,580.00 and Y = 447,690.00, North 65 degrees 25 minutes 23 seconds East 3,390.13 feet to a point having Coordinates of X = 1,204,663.00 and Y = 449,100.00, North 35 degrees 51 minutes 28 seconds East 2,060.52 feet to a point having Coordinates of X = 1,205,870.00 and Y = 450,770.00, North 24 degrees 40 minutes 16 seconds East 2,013.83 feet to a point having Coordinates of X = 1,206,710.59 and Y = 452,600.00; thence East 4,199.65 feet to a point on the Western boundary of State Lease No. 18158 having Coordinates of X = 1,210,910.24 and Y = 452,600.00; thence along the boundary of said State Lease No. 18158, the following courses: South 52 degrees 46 minutes 36 seconds West 1,987.03 feet to a point having Coordinates of X = 1,209,328.00 and Y = 451,398.00; South 39 degrees 14 minutes 41 seconds East 994.25 feet to a point having Coordinates of X = 1,209,957.00 and Y = 450,628.00; East 1,837.00 feet to a point having Coordinates of X = 1,211,794.00 and Y = 450,628.00; North 38 degrees 44 minutes 15 seconds East 1,957.64 feet to a point having Coordinates of X = 1,213,019.00 and Y = 452,155.00; and North 445.00 feet to a point having Coordinates of X = 1,213,019.00 and Y = 452,600.00; thence East 2,781.00

feet to a point having Coordinates of X = 1,215,800.00 and Y = 452,600.00; thence South 13,700.00 feet to the Point of Beginning, containing **2,399.34 acres, LESS AND EXCEPT** that portion thereof, if any, located West of the boundary line between the States of Texas and Louisiana as determined by the report of the Special Master and adjudicated by the Supreme Court of the United States in litigation styled **Texas v. Louisiana, et al No. 36 Original**, or as otherwise approved by said court, all as more particularly outlined on a plat on file in the Office of Mineral Resources, Department of Natural Resources. All bearings, distances and coordinates are based on Louisiana Coordinate System of 1927, (North or South Zone), where applicable.

NOTE: The above description of the Tract nominated for lease has been provided and corrected, where required, exclusively by the nomination party. Any mineral lease selected from this Tract and awarded by the Louisiana State Mineral and Energy Board shall be without warranty of any kind, either express, implied, or statutory, including, but not limited to, the implied warranties of merchantability and fitness for a particular purpose. Should the mineral lease awarded by the Louisiana State Mineral and Energy Board be subsequently modified, cancelled or abrogated due to the existence of conflicting leases, operating agreements, private claims or other future obligations or conditions which may affect all or any portion of the leased Tract, it shall not relieve the Lessee of the obligation to pay any bonus due thereon to the Louisiana State Mineral and Energy Board, nor shall the Louisiana State Mineral and Energy Board be obligated to refund any consideration paid by the Lessor prior to such modification, cancellation, or abrogation, including, but not limited to, bonuses, rentals and royalties.

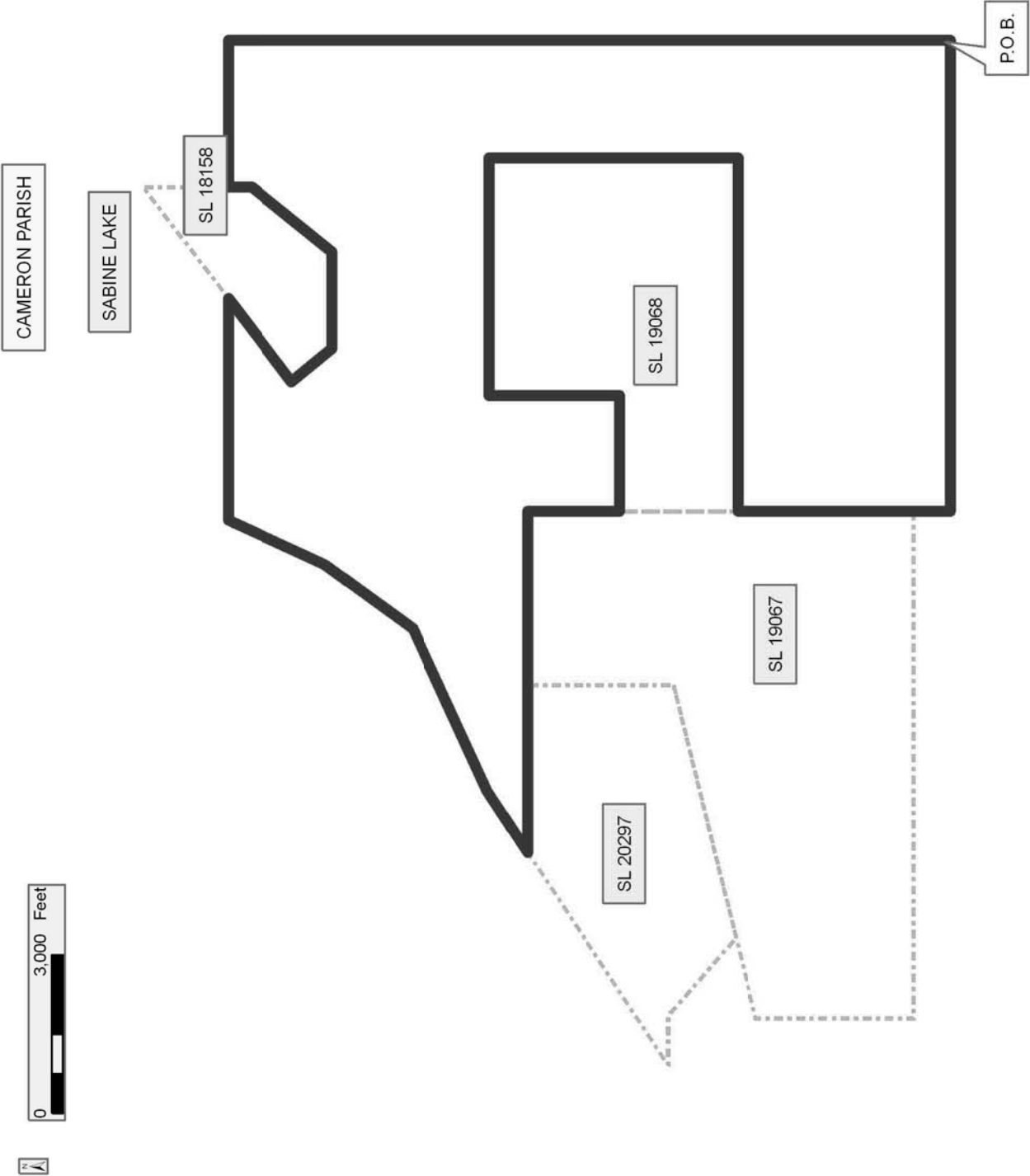
NOTE: The State of Louisiana does hereby reserve, and this lease shall be subject to, the imprescriptible right of surface use in the nature of a servitude in favor of the Department of Natural Resources, including its Offices and Commissions, for the sole purpose of implementing, constructing, servicing and maintaining approved coastal zone management and/or restoration projects. Utilization of any and all rights derived under this lease by the mineral lessee, its agents, successors or assigns, shall not interfere with nor hinder the reasonable surface use by the Department of Natural Resources, its Offices or Commissions, as herein above reserved.

NOTE: This tract is located in an area designated by the Louisiana Legislature or the Wildlife and Fisheries Commission as a Public Oyster Seed Ground, Reservation, or area of Calcasieu or Sabine Lake. Proposed projects occurring in these areas will be evaluated on a case by case basis by Louisiana Department of Wildlife & Fisheries. Modifications to proposed project features including, but not limited to, access routes, well sites, flowlines, and appurtenant structures maybe required by the Louisiana Department of Wildlife and Fisheries. In addition, compensatory mitigation will be required to offset unavoidable habitat impacts.

Applicant: SAUR MINERALS, LLC

Bidder	Cash Payment	Price/Acre	Rental	Oil	Gas	Other

Legend
10100032
Active_Leases



TRACT 41655 - Cameron Parish, Louisiana

All of the lands now or formerly constituting the beds and bottoms of all water bodies of every nature and description as to which title is vested in the State of Louisiana, together with all islands arising therein and other lands formed by accretion or by reliction, where allowed by law, excepting tax adjudicated lands, and not presently under mineral lease on October 13, 2010, situated in Cameron Parish, Louisiana, and more particularly described as follows: Beginning at a point having Coordinates of X = 1,215,800.00 and Y = 438,900.00; thence North 10,800.00 feet to a point having Coordinates of X = 1,215,800.00 and Y = 449,700.00; thence East 12,400.00 feet to a point having Coordinates of X = 1,228,200.00 and Y = 449,700.00; thence South 10,800.00 feet to a point having Coordinates of X = 1,228,200.00 and Y = 438,900.00; thence West 12,400.00 feet to the Point of Beginning, containing approximately **2,187 acres**, all as more particularly outlined on a plat on file in the Office of Mineral Resources, Department of Natural Resources. All bearings, distances and coordinates are based on Louisiana Coordinate System of 1927, (North or South Zone), where applicable.

NOTE: The above description of the Tract nominated for lease has been provided and corrected, where required, exclusively by the nomination party. Any mineral lease selected from this Tract and awarded by the Louisiana State Mineral and Energy Board shall be without warranty of any kind, either express, implied, or statutory, including, but not limited to, the implied warranties of merchantability and fitness for a particular purpose. Should the mineral lease awarded by the Louisiana State Mineral and Energy Board be subsequently modified, cancelled or abrogated due to the existence of conflicting leases, operating agreements, private claims or other future obligations or conditions which may affect all or any portion of the leased Tract, it shall not relieve the Lessee of the obligation to pay any bonus due thereon to the Louisiana State Mineral and Energy Board, nor shall the Louisiana State Mineral and Energy Board be obligated to refund any consideration paid by the Lessor prior to such modification, cancellation, or abrogation, including, but not limited to, bonuses, rentals and royalties.

NOTE: The State of Louisiana does hereby reserve, and this lease shall be subject to, the imprescriptible right of surface use in the nature of a servitude in favor of the Department of Natural Resources, including its Offices and Commissions, for the sole purpose of implementing, constructing, servicing and maintaining approved coastal zone management and/or restoration projects. Utilization of any and all rights derived under this lease by the mineral lessee, its agents, successors or assigns, shall not interfere with nor hinder the reasonable surface use by the Department of Natural Resources, its Offices or Commissions, as herein above reserved.

NOTE: This tract is located in an area designated by the Louisiana Legislature or the Wildlife and Fisheries Commission as a Public Oyster

Seed Ground, Reservation, or area of Calcasieu or Sabine Lake. Proposed projects occurring in these areas will be evaluated on a case by case basis by Louisiana Department of Wildlife & Fisheries. Modifications to proposed project features including, but not limited to, access routes, well sites, flowlines, and appurtenant structures maybe required by the Louisiana Department of Wildlife and Fisheries. In addition, compensatory mitigation will be required to offset unavoidable habitat impacts.

Applicant: SAUR MINERALS, LLC

Bidder	Cash Payment	Price/Acre	Rental	Oil	Gas	Other

Legend

10100029

IMAGERY.DOQQ_2008_1M_CIR

CAMERON PARISH

T14S - R14W

P.O.B.

SABINE LAKE

0 3,000 Feet



TRACT 41656 - Cameron Parish, Louisiana

All of the lands now or formerly constituting the beds and bottoms of all water bodies of every nature and description as to which title is vested in the State of Louisiana, together with all islands arising therein and other lands formed by accretion or by reliction, where allowed by law, excepting tax adjudicated lands, and not presently under mineral lease on October 13, 2010, situated in Cameron Parish, Louisiana, and more particularly described as follows: Beginning at a point having Coordinates of X = 1,500,966.67 and Y = 418,085.52; thence North 01 degrees 22 minutes 04 seconds East 5,278.22 feet to a point having Coordinates of X = 1,501,092.67 and Y = 423,362.24; thence North 01 degrees 22 minutes 43 seconds East 5,278.22 feet to a point having Coordinates of X = 1,501,219.66 and Y = 428,638.93; thence South 88 degrees 32 minutes 26 seconds East 13,403.67 feet to a point having Coordinates of X = 1,514,618.98 and Y = 428,297.55; thence South 01 degrees 26 minutes 53 seconds West 604.24 feet to a point on the North boundary of State Lease No. 16138 having Coordinates of X = 1,514,603.71 and Y = 427,693.50; thence along the boundary of said State Lease No. 16138 the following courses: North 88 degrees 33 minutes 21 seconds West 1,000.25 feet to a point having Coordinates of X = 1,513,603.78 and Y = 427,718.71; South 01 degrees 26 minutes 40 seconds West 2,275.31 feet to a point having Coordinates of X = 1,513,546.43 and Y = 425,444.12 and South 88 degrees 33 minutes 22 seconds East 1,000.11 feet to a point having Coordinates of X = 1,514,546.22 and Y = 425,418.92; thence South 01 degrees 26 minutes 53 seconds West 7,670.99 feet to a point having Coordinates of X = 1,514,352.37 and Y = 417,750.38; thence North 88 degrees 33 minutes 57 seconds West 13,389.89 feet to the point of beginning, containing approximately **274 acres**, all as more particularly outlined on a plat on file in the Office of Mineral Resources, Department of Natural Resources. All bearings, distances and coordinates are based on Louisiana Coordinate System of 1927, (North or South Zone), where applicable.

NOTE: The above description of the Tract nominated for lease has been provided and corrected, where required, exclusively by the nomination party. Any mineral lease selected from this Tract and awarded by the Louisiana State Mineral and Energy Board shall be without warranty of any kind, either express, implied, or statutory, including, but not limited to, the implied warranties of merchantability and fitness for a particular purpose. Should the mineral lease awarded by the Louisiana State Mineral and Energy Board be subsequently modified, cancelled or abrogated due to the existence of conflicting leases, operating agreements, private claims or other future obligations or conditions which may affect all or any portion of the leased Tract, it shall not relieve the Lessee of the obligation to pay any bonus due thereon to the Louisiana State Mineral and Energy Board, nor shall the Louisiana State Mineral and Energy Board be obligated to refund any consideration paid by the Lessor prior to such modification, cancellation, or abrogation, including, but not limited to, bonuses, rentals and royalties.

NOTE: The State of Louisiana does hereby reserve, and this lease shall be subject to, the imprescriptible right of surface use in the nature of a servitude in favor of the Department of Natural Resources, including its Offices and Commissions, for the sole purpose of implementing, constructing, servicing and maintaining approved coastal zone management and/or restoration projects. Utilization of any and all rights derived under this lease by the mineral lessee, its agents, successors or assigns, shall not interfere with nor hinder the reasonable surface use by the Department of Natural Resources, its Offices or Commissions, as herein above reserved.

Applicant: WAINWRIGHT & BOYER LAND SERVICES, LLC

Bidder	Cash Payment	Price/Acre	Rental	Oil	Gas	Other

Legend

10100033

Active Leases

IMAGERY.DOQQ_2008_1M_CIR

CAMERON PARISH

MERMENTAU RIVER

SL 16138

LITTLE CHENIER BAYOU

P.O.B.

0 3,000 Feet

TRACT 41657 - Cameron Parish, Louisiana

All of the lands now or formerly constituting the beds and bottoms of all water bodies of every nature and description as to which title is vested in the State of Louisiana, together with all islands arising therein and other lands formed by accretion or by reliction, where allowed by law, excepting tax adjudicated lands, and not presently under mineral lease on October 13, 2010, situated in Cameron Parish, Louisiana, and more particularly described as follows: Beginning at a point having Coordinates of X = 1,512,900.00 and Y = 407,696.00; thence West 14,928.00 feet to a point having Coordinates of X = 1,497,972.00 and Y = 407,696.00; thence North 10,464.50 feet to a point having Coordinates of X = 1,497,972.00 and Y = 418,160.50; thence South 88 degrees 33 minutes 57 seconds East 14,932.68 feet to a point having Coordinates of X = 1,512,900.00 and Y = 417,786.74; thence South 10,090.74 feet to the point of beginning, containing approximately **616 acres**, all as more particularly outlined on a plat on file in the Office of Mineral Resources, Department of Natural Resources. All bearings, distances and coordinates are based on Louisiana Coordinate System of 1927, (North or South Zone), where applicable.

NOTE: The above description of the Tract nominated for lease has been provided and corrected, where required, exclusively by the nomination party. Any mineral lease selected from this Tract and awarded by the Louisiana State Mineral and Energy Board shall be without warranty of any kind, either express, implied, or statutory, including, but not limited to, the implied warranties of merchantability and fitness for a particular purpose. Should the mineral lease awarded by the Louisiana State Mineral and Energy Board be subsequently modified, cancelled or abrogated due to the existence of conflicting leases, operating agreements, private claims or other future obligations or conditions which may affect all or any portion of the leased Tract, it shall not relieve the Lessee of the obligation to pay any bonus due thereon to the Louisiana State Mineral and Energy Board, nor shall the Louisiana State Mineral and Energy Board be obligated to refund any consideration paid by the Lessor prior to such modification, cancellation, or abrogation, including, but not limited to, bonuses, rentals and royalties.

NOTE: The State of Louisiana does hereby reserve, and this lease shall be subject to, the imprescriptible right of surface use in the nature of a servitude in favor of the Department of Natural Resources, including its Offices and Commissions, for the sole purpose of implementing, constructing, servicing and maintaining approved coastal zone management and/or restoration projects. Utilization of any and all rights derived under this lease by the mineral lessee, its agents, successors or assigns, shall not interfere with nor hinder the reasonable surface use by the Department of Natural Resources, its Offices or Commissions, as herein above reserved.

Applicant: WAINWRIGHT & BOYER LAND SERVICES, LLC

Bidder	Cash Payment	Price/Acre	Rental	Oil	Gas	Other

10100034

IMAGERY.DOQQ_2008_1M_CII

0 3,000 Feet



CAMERON PARISH

MERMENTAU RIVER

LITTLE PECAN LAKE

LITTLE PECAN BAYOU

P.O.B.

BIG MOUTH BAYOU

UPPER MUD LAKE



TRACT 41658 - Plaquemines Parish, Louisiana

All of the lands now or formerly constituting the beds and bottoms of all water bodies of every nature and description as to which title is vested in the State of Louisiana, together with all islands arising therein and other lands formed by accretion or by reliction, where allowed by law, excepting tax adjudicated lands, and not presently under mineral lease on October 13, 2010, situated in Plaquemines Parish, Louisiana, and more particularly described as follows: Beginning at a point having Coordinates of X = 2,517,450.20 and Y = 286,600.00; thence East 9,631.02 feet to a point having Coordinates of X = 2,527,081.22 and Y = 286,600.00; thence South 8,461.90 feet to the Northeast corner of State Lease No. 20008 having Coordinates of X = 2,527,081.22 and Y = 278,138.10; thence along the North boundary of said State Lease No. 20008 the following courses and distances: South 87 degrees 54 minutes 20 seconds West 4,851.87 feet to a corner having Coordinates of X = 2,522,232.59 and Y = 277,960.77, South 02 degrees 08 minutes 20 seconds East 1,304.95 feet to a corner having Coordinates of X = 2,522,281.29 and Y = 276,656.73 and South 87 degrees 52 minutes 21 seconds West 4,834.42 feet to its Northwest corner, also being the Northeast corner of State Lease No. 20007 having Coordinates of X = 2,517,450.20 and Y = 276,477.27; thence North 10,122.73 feet to the point of beginning, containing approximately **722 acres**, all as more particularly outlined on a plat on file in the Office of Mineral Resources, Department of Natural Resources. All bearings, distances and coordinates are based on Louisiana Coordinate System of 1927, (North or South Zone), where applicable.

NOTE: The above description of the Tract nominated for lease has been provided and corrected, where required, exclusively by the nomination party. Any mineral lease selected from this Tract and awarded by the Louisiana State Mineral and Energy Board shall be without warranty of any kind, either express, implied, or statutory, including, but not limited to, the implied warranties of merchantability and fitness for a particular purpose. Should the mineral lease awarded by the Louisiana State Mineral and Energy Board be subsequently modified, cancelled or abrogated due to the existence of conflicting leases, operating agreements, private claims or other future obligations or conditions which may affect all or any portion of the leased Tract, it shall not relieve the Lessee of the obligation to pay any bonus due thereon to the Louisiana State Mineral and Energy Board, nor shall the Louisiana State Mineral and Energy Board be obligated to refund any consideration paid by the Lessor prior to such modification, cancellation, or abrogation, including, but not limited to, bonuses, rentals and royalties.

NOTE: The State of Louisiana does hereby reserve, and this lease shall be subject to, the imprescriptible right of surface use in the nature of a servitude in favor of the Department of Natural Resources, including its Offices and Commissions, for the sole purpose of implementing, constructing, servicing and maintaining approved coastal zone management and/or restoration projects. Utilization of any and all rights derived

under this lease by the mineral lessee, its agents, successors or assigns, shall not interfere with nor hinder the reasonable surface use by the Department of Natural Resources, its Offices or Commissions, as herein above reserved.

Applicant: THEOPHILUS OIL, GAS & LAND SERVICES, LLC

Bidder	Cash Payment	Price/Acre	Rental	Oil	Gas	Other

Legend

10100039

Active_Leases

IMAGERY.DOQQ_2008_1M_CIR

PLAQUEMINES PARISH

BAY LANAUX

P.O.B.

T19S - R28E

BAY DE LA CHENIERE

GRAND BAYOU

SL 20008

SL 20007

