

**TRACT 41679 - Caddo Parish, Louisiana**

All of the mineral rights only under land adjudicated to and acquired by the State of Louisiana in and through a proper tax sale, and subsequently alienated by the State which retained the mineral rights thereto, and which is not under valid mineral lease from the State of Louisiana on October 13, 2010, situated in Caddo Parish, Louisiana, and being more fully described as follows: That certain tract or parcel of land being described as the North Half of the Northwest Quarter of the Southwest Quarter of the Northwest Quarter (N1/2 of NW1/4 of SW1/4 of NW1/4) of Section 34, Township 17 North, Range 15 West, less road reserved on West side; said tract or parcel being the same lands adjudicated to the State of Louisiana from Sarah Allen Rosenheim at Entry No. 13214, for unpaid taxes for the year 1932; and being the same lands acquired by Oscar K. Pickles from the State of Louisiana at Entry No. 65613, in the office of the Clerk of Court, Caddo Parish, Louisiana; this certain tract or parcel of land containing approximately **5 acres**, all as more particularly outlined on a plat on file in the Office of Mineral Resources, Department of Natural Resources. All bearings, distances and coordinates are based on Louisiana Coordinate System of 1927, (North or South Zone), where applicable.

NOTE: The above description of the Tract nominated for lease has been provided and corrected, where required, exclusively by the nomination party. Any mineral lease selected from this Tract and awarded by the Louisiana State Mineral and Energy Board shall be without warranty of any kind, either express, implied, or statutory, including, but not limited to, the implied warranties of merchantability and fitness for a particular purpose. Should the mineral lease awarded by the Louisiana State Mineral and Energy Board be subsequently modified, cancelled or abrogated due to the existence of conflicting leases, operating agreements, private claims or other future obligations or conditions which may affect all or any portion of the leased Tract, it shall not relieve the Lessee of the obligation to pay any bonus due thereon to the Louisiana State Mineral and Energy Board, nor shall the Louisiana State Mineral and Energy Board be obligated to refund any consideration paid by the Lessor prior to such modification, cancellation, or abrogation, including, but not limited to, bonuses, rentals and royalties.

NOTE: No surface activity on this tract undertaken in conjunction with any operations under any mineral lease given on this tract will be allowed without prior approval of the surface owner and further, no such right of surface use shall be deemed to have been given as part of any mineral lease by the State of Louisiana on this tract.

Applicant: CLASSIC PETROLEUM, INC.

Bidder	Cash Payment	Price/Acre	Rental	Oil	Gas	Other

Legend

10100046

IMAGERY.DRG24000

CADDO PARISH

SEC 34

T17N - R15W

SEC 33

500 Feet

34

213T

SAND FALLS

**TRACT 41680 - Caddo Parish, Louisiana**

All of the mineral rights only under land adjudicated to and acquired by the State of Louisiana in and through a proper tax sale, and subsequently alienated by the State which retained the mineral rights thereto, and which is not under valid mineral lease from the State of Louisiana on October 13, 2010, situated in Caddo Parish, Louisiana, and being more fully described as follows: That certain tract or parcel of land being described as the South Half of the Southwest Quarter of the Northwest Quarter (S1/2 of SW1/4 of NW1/4) of Section 34, Township 17 North, Range 15 West, Caddo Parish, Louisiana; being the same lands adjudicated to the State of Louisiana from Frank Q. Stuart at Entry No. 108486, for unpaid taxes for the year 1919; and being the same lands acquired by H. C. Metcalf from the State of Louisiana at Entry No. 43810, in the office of the Clerk of Court, Caddo Parish, Louisiana; this certain tract or parcel of land containing **20 acres**, all as more particularly outlined on a plat on file in the Office of Mineral Resources, Department of Natural Resources. All bearings, distances and coordinates are based on Louisiana Coordinate System of 1927, (North or South Zone), where applicable.

NOTE: The above description of the Tract nominated for lease has been provided and corrected, where required, exclusively by the nomination party. Any mineral lease selected from this Tract and awarded by the Louisiana State Mineral and Energy Board shall be without warranty of any kind, either express, implied, or statutory, including, but not limited to, the implied warranties of merchantability and fitness for a particular purpose. Should the mineral lease awarded by the Louisiana State Mineral and Energy Board be subsequently modified, cancelled or abrogated due to the existence of conflicting leases, operating agreements, private claims or other future obligations or conditions which may affect all or any portion of the leased Tract, it shall not relieve the Lessee of the obligation to pay any bonus due thereon to the Louisiana State Mineral and Energy Board, nor shall the Louisiana State Mineral and Energy Board be obligated to refund any consideration paid by the Lessor prior to such modification, cancellation, or abrogation, including, but not limited to, bonuses, rentals and royalties.

NOTE: No surface activity on this tract undertaken in conjunction with any operations under any mineral lease given on this tract will be allowed without prior approval of the surface owner and further, no such right of surface use shall be deemed to have been given as part of any mineral lease by the State of Louisiana on this tract.

Applicant: CLASSIC PETROLEUM, INC.

Bidder	Cash Payment	Price/Acre	Rental	Oil	Gas	Other

Legend

10100047

IMAGERY.DRG24000

CADDO PARISH

SEC 34

T17N - R15W

34

213T

SEC 33

0 500 Feet

**TRACT 41681 - Caddo Parish, Louisiana**

All of the mineral rights only under land adjudicated to and acquired by the State of Louisiana in and through a proper tax sale, and subsequently alienated by the State which retained the mineral rights thereto, and which is not under valid mineral lease from the State of Louisiana on October 13, 2010, situated in Caddo Parish, Louisiana, and being more fully described as follows: That certain tract or parcel of land situated in the North Half of the Northeast Quarter (N1/2 of NE1/4) of Section 2, Township 16 North, Range 14 West, Caddo Parish, Louisiana; being further described as Lot 169 of Suburban Acres as per plat recorded in September 1911, recorded at COB 50, Page 471, bearing Entry No. 28674 in the office of the Clerk of Court, Caddo Parish, Louisiana; being the same lands adjudicated to the State of Louisiana from Mrs. Lou Hyatt at Entry No. 17510, for unpaid taxes for the year 1920; and also being those same lands acquired by Z. R. Lawhon, et al from the State of Louisiana at Entry No. 31213, in the office of the Clerk of Court, Caddo Parish, Louisiana; this certain tract or parcel of land containing approximately **5 acres**, all as more particularly outlined on a plat on file in the Office of Mineral Resources, Department of Natural Resources. All bearings, distances and coordinates are based on Louisiana Coordinate System of 1927, (North or South Zone), where applicable.

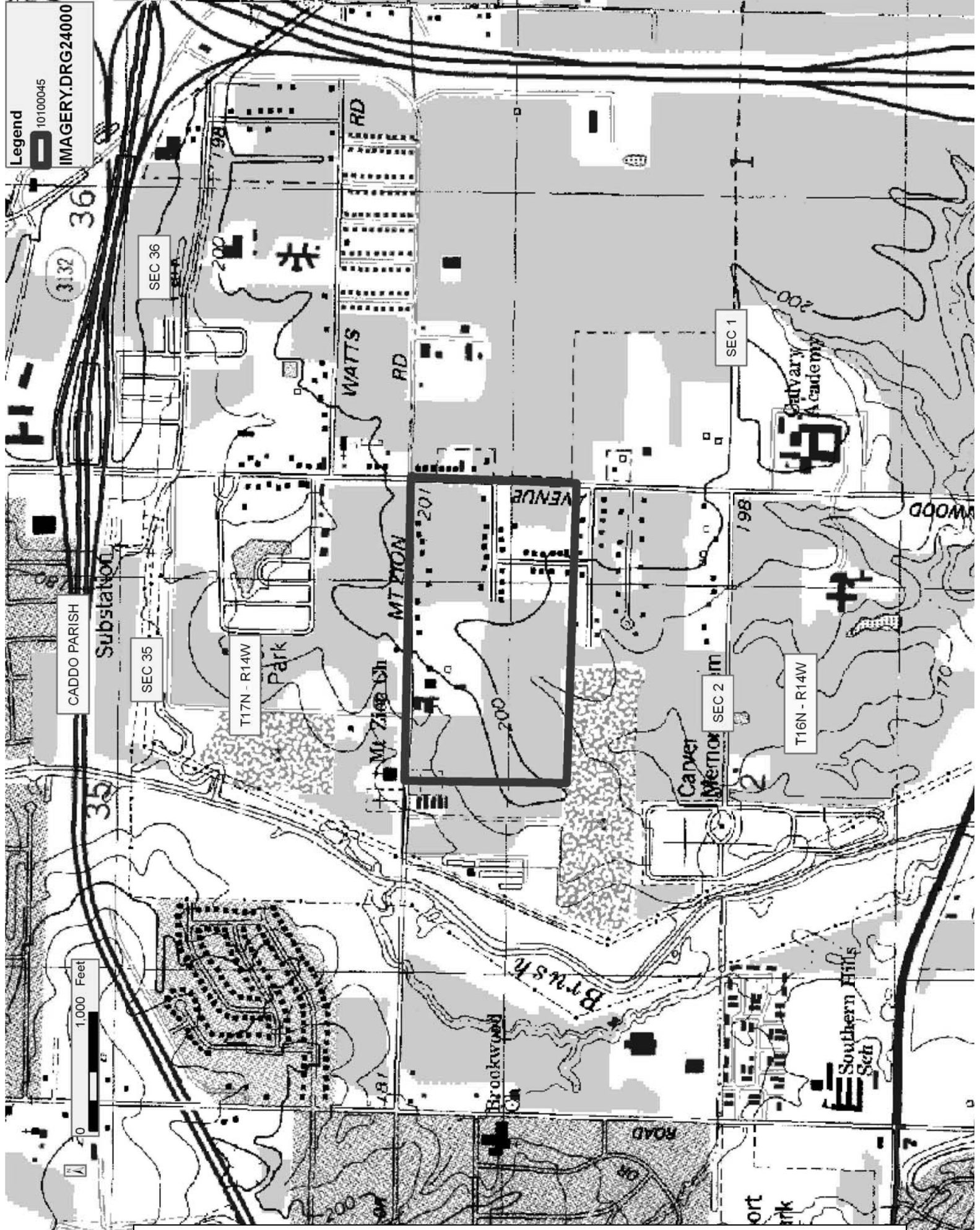
NOTE: The above description of the Tract nominated for lease has been provided and corrected, where required, exclusively by the nomination party. Any mineral lease selected from this Tract and awarded by the Louisiana State Mineral and Energy Board shall be without warranty of any kind, either express, implied, or statutory, including, but not limited to, the implied warranties of merchantability and fitness for a particular purpose. Should the mineral lease awarded by the Louisiana State Mineral and Energy Board be subsequently modified, cancelled or abrogated due to the existence of conflicting leases, operating agreements, private claims or other future obligations or conditions which may affect all or any portion of the leased Tract, it shall not relieve the Lessee of the obligation to pay any bonus due thereon to the Louisiana State Mineral and Energy Board, nor shall the Louisiana State Mineral and Energy Board be obligated to refund any consideration paid by the Lessor prior to such modification, cancellation, or abrogation, including, but not limited to, bonuses, rentals and royalties.

NOTE: No surface activity on this tract undertaken in conjunction with any operations under any mineral lease given on this tract will be allowed without prior approval of the surface owner and further, no such right of surface use shall be deemed to have been given as part of any mineral lease by the State of Louisiana on this tract.

Applicant: CLASSIC PETROLEUM, INC.

Bidder	Cash Payment	Price/Acre	Rental	Oil	Gas	Other





Office of Mineral Resources, Acres: 5 Tract Number: 41681

**TRACT 41682 - Sabine Parish, Louisiana**

All of the mineral rights only under land adjudicated to and acquired by the State of Louisiana in and through a proper tax sale, and subsequently alienated by the State which retained the mineral rights thereto, and which is not under valid mineral lease from the State of Louisiana on October 13, 2010, situated in Sabine Parish, Louisiana, and being more fully described as follows: The Northwest Quarter of the Northwest Quarter (NW/4 of NW/4) of Section 29, Township 9 North, Range 12 West and 1 acre out of the Southwest Quarter of the Southwest Quarter (1 acre of SW/4 of SW/4) of Section 20, Township 9 North, Range 12 West, Sabine Parish Louisiana, being the same lands adjudicated to the State in the name of Mrs. Nancy Litton for the nonpayment of taxes for the year 1931, and subsequently sold to J. E. Cates, under File COB 102 Page 283 Entry Number 118974, containing approximately **41 acres**, all as more particularly outlined on a plat on file in the Office of Mineral Resources, Department of Natural Resources. All bearings, distances and coordinates are based on Louisiana Coordinate System of 1927, (North or South Zone), where applicable.

NOTE: The above description of the Tract nominated for lease has been provided and corrected, where required, exclusively by the nomination party. Any mineral lease selected from this Tract and awarded by the Louisiana State Mineral and Energy Board shall be without warranty of any kind, either express, implied, or statutory, including, but not limited to, the implied warranties of merchantability and fitness for a particular purpose. Should the mineral lease awarded by the Louisiana State Mineral and Energy Board be subsequently modified, cancelled or abrogated due to the existence of conflicting leases, operating agreements, private claims or other future obligations or conditions which may affect all or any portion of the leased Tract, it shall not relieve the Lessee of the obligation to pay any bonus due thereon to the Louisiana State Mineral and Energy Board, nor shall the Louisiana State Mineral and Energy Board be obligated to refund any consideration paid by the Lessor prior to such modification, cancellation, or abrogation, including, but not limited to, bonuses, rentals and royalties.

NOTE: No surface activity on this tract undertaken in conjunction with any operations under any mineral lease given on this tract will be allowed without prior approval of the surface owner and further, no such right of surface use shall be deemed to have been given as part of any mineral lease by the State of Louisiana on this tract.

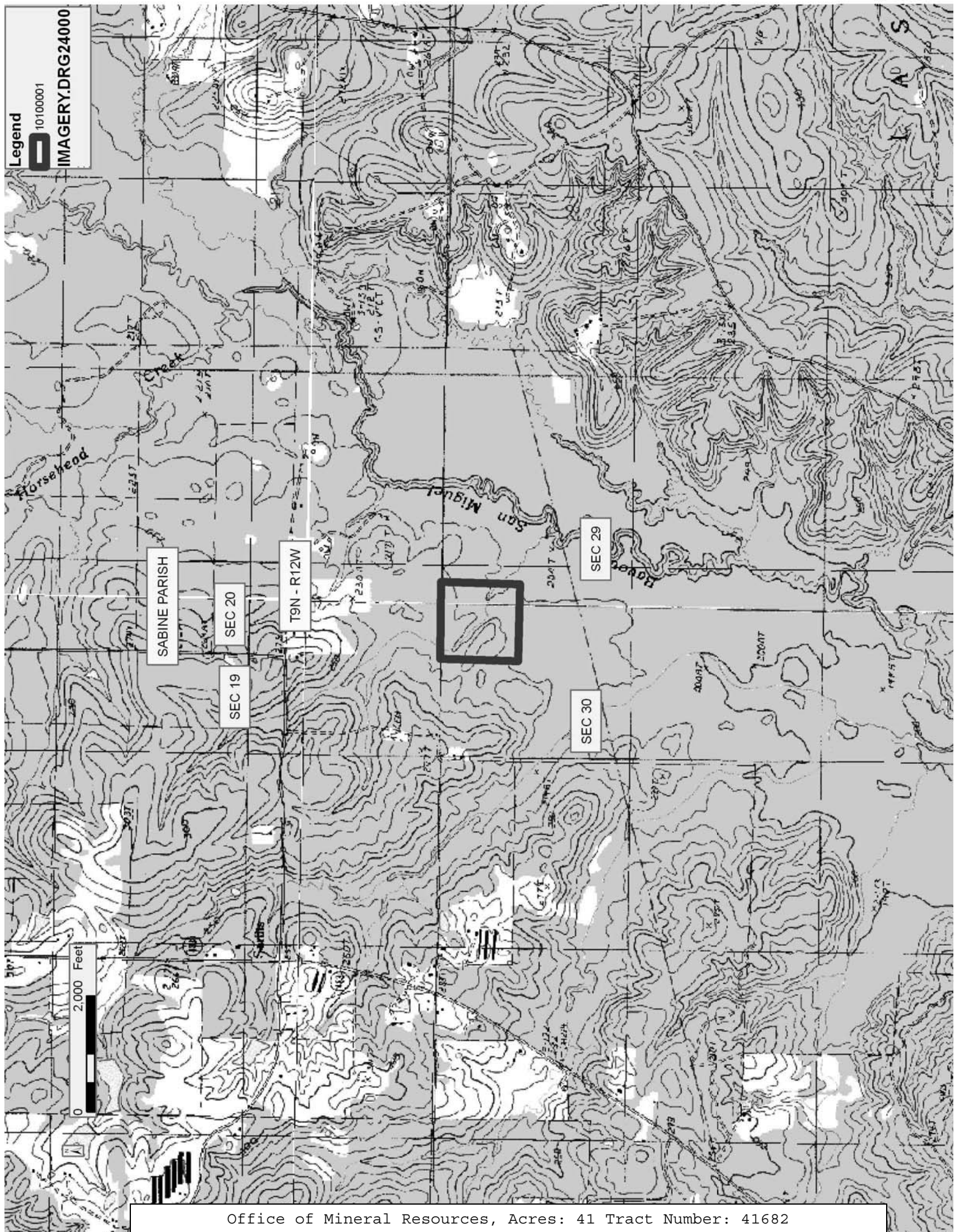
Applicant: AUDUBON OIL AND GAS CORPORATION

Bidder	Cash Payment	Price/Acre	Rental	Oil	Gas	Other

Legend

10100001

IMAGERY.DRG24000



**TRACT 41683 - Sabine Parish, Louisiana**

All of the mineral rights only under land adjudicated to and acquired by the State of Louisiana in and through a proper tax sale, and subsequently alienated by the State which retained the mineral rights thereto, and which is not under valid mineral lease from the State of Louisiana on October 13, 2010, situated in Sabine Parish, Louisiana, and being more fully described as follows: The Northwest Quarter of the Northwest Quarter (NW/4 of NW/4) and the North One Fifth of the Southwest Quarter of the Northwest Quarter (N 1/5 of SW/4 of NW/4) of Section 6, Township 8 North, Range 10 West, Sabine Parish Louisiana, being the same lands adjudicated to the State in the name of Mrs. Jane Kirkpatrick for the nonpayment of taxes for the year 1932, and subsequently sold to James J. Cobbs, under File No. 175605, containing approximately **48 acres**, all as more particularly outlined on a plat on file in the Office of Mineral Resources, Department of Natural Resources. All bearings, distances and coordinates are based on Louisiana Coordinate System of 1927, (North or South Zone), where applicable.

NOTE: The above description of the Tract nominated for lease has been provided and corrected, where required, exclusively by the nomination party. Any mineral lease selected from this Tract and awarded by the Louisiana State Mineral and Energy Board shall be without warranty of any kind, either express, implied, or statutory, including, but not limited to, the implied warranties of merchantability and fitness for a particular purpose. Should the mineral lease awarded by the Louisiana State Mineral and Energy Board be subsequently modified, cancelled or abrogated due to the existence of conflicting leases, operating agreements, private claims or other future obligations or conditions which may affect all or any portion of the leased Tract, it shall not relieve the Lessee of the obligation to pay any bonus due thereon to the Louisiana State Mineral and Energy Board, nor shall the Louisiana State Mineral and Energy Board be obligated to refund any consideration paid by the Lessor prior to such modification, cancellation, or abrogation, including, but not limited to, bonuses, rentals and royalties.

NOTE: No surface activity on this tract undertaken in conjunction with any operations under any mineral lease given on this tract will be allowed without prior approval of the surface owner and further, no such right of surface use shall be deemed to have been given as part of any mineral lease by the State of Louisiana on this tract.

Applicant: AUDUBON OIL AND GAS CORPORATION

Bidder	Cash Payment	Price/Acre	Rental	Oil	Gas	Other

Legend

10100002

IMAGERY.DRG24000

2,000 Feet

