

TRACT 41685 - Cameron Parish, Louisiana

All lands, including lands added by accretion and reliction and lands now or formerly constituting the beds and bottoms of all water bodies of every nature and description, owned by and not presently under mineral lease as of November 10, 2010 from the State of Louisiana, situated in Cameron Parish, Louisiana, and being more fully described as follows: Beginning at a point within Block 4, West Cameron Area, Revised, having Coordinates of X = 1,384,500.00 and Y = 398,175.00; thence North 10,976.42 feet to a point on the Coastline as per the Supreme Court Decree dated June 16, 1975, having Coordinates of X = 1,384,500.00 and Y = 409,151.42; thence along said Coastline the following courses: Northeasterly on a straight line to a point having Coordinates of X = 1,386,636 and Y = 409,216 and Northeasterly on a straight line to the Northeast corner of said Block 4, having Coordinates of X = 1,391,451.71 and Y = 409,240.45; thence South 11,065.45 feet along the East line of said Block 4 to a point having Coordinates of X = 1,391,451.71 and Y = 398,175.00; thence West 6,951.71 feet to the Point of Beginning, containing **1,761.79 acres**, all as more particularly outlined on a plat on file in the Office of Mineral Resources, Department of Natural Resources. All bearings, distances and coordinates are based on Louisiana Coordinate System of 1927, (North or South Zone), where applicable.

NOTE: The above description of the Tract nominated for lease has been provided and corrected, where required, exclusively by the nomination party. Any mineral lease selected from this Tract and awarded by the Louisiana State Mineral and Energy Board shall be without warranty of any kind, either express, implied, or statutory, including, but not limited to, the implied warranties of merchantability and fitness for a particular purpose. Should the mineral lease awarded by the Louisiana State Mineral and Energy Board be subsequently modified, cancelled or abrogated due to the existence of conflicting leases, operating agreements, private claims or other future obligations or conditions which may affect all or any portion of the leased Tract, it shall not relieve the Lessee of the obligation to pay any bonus due thereon to the Louisiana State Mineral and Energy Board, nor shall the Louisiana State Mineral and Energy Board be obligated to refund any consideration paid by the Lessor prior to such modification, cancellation, or abrogation, including, but not limited to, bonuses, rentals and royalties.

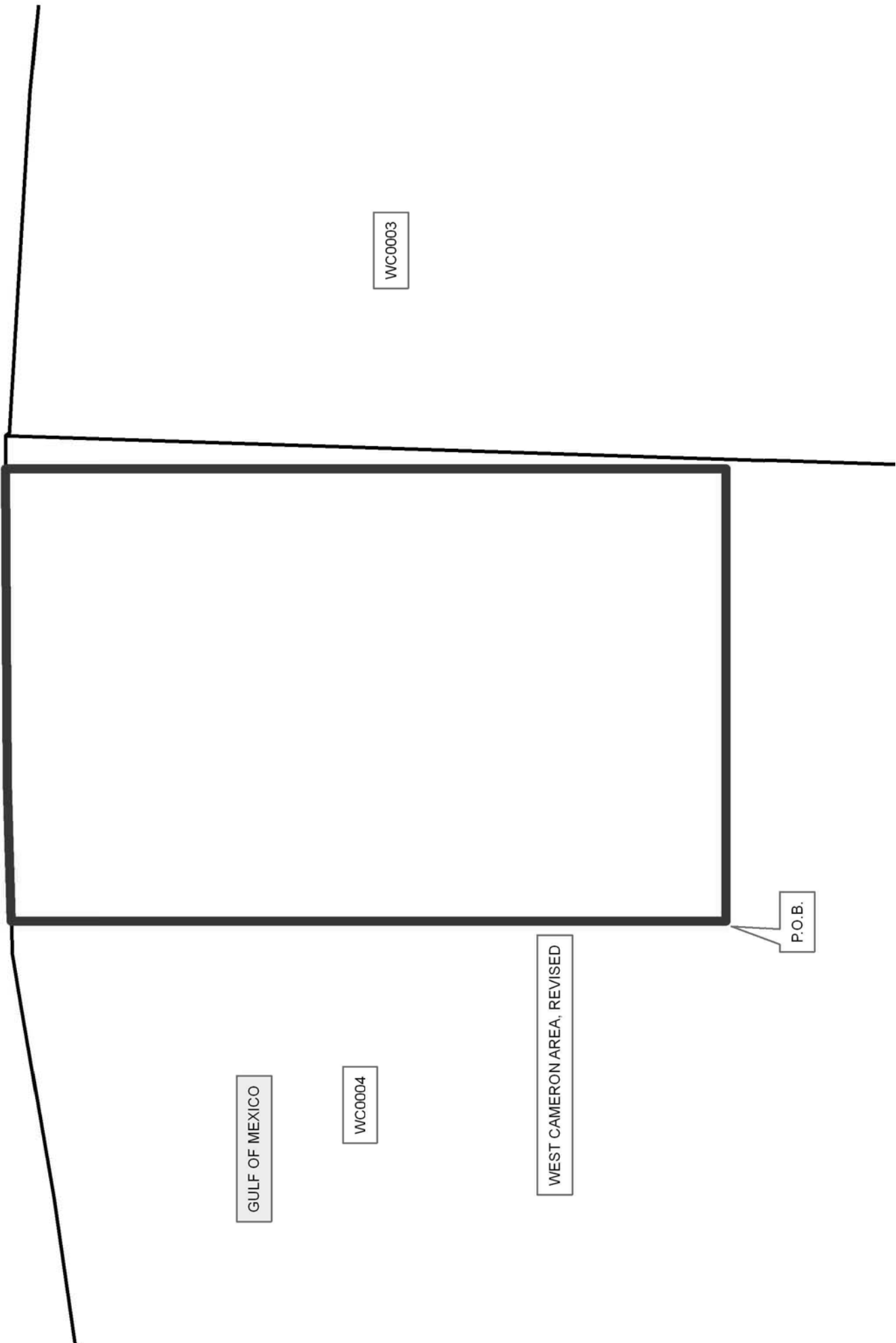
NOTE: The State of Louisiana does hereby reserve, and this lease shall be subject to, the imprescriptible right of surface use in the nature of a servitude in favor of the Department of Natural Resources, including its Offices and Commissions, for the sole purpose of implementing, constructing, servicing and maintaining approved coastal zone management and/or restoration projects. Utilization of any and all rights derived under this lease by the mineral lessee, its agents, successors or assigns, shall not interfere with nor hinder the reasonable surface use by the Department of Natural Resources, its Offices or Commissions, as herein above reserved.

Applicant: WAINWRIGHT & BOYER LAND SERVICES, LLC

Bidder	Cash Payment	Price/Acre	Rental	Oil	Gas	Other

Legend
10110005
Blocks

CAMERON PARISH



TRACT 41686 - Cameron Parish, Louisiana

All lands, including lands added by accretion and reliction and lands now or formerly constituting the beds and bottoms of all water bodies of every nature and description, owned by and not presently under mineral lease as of November 10, 2010 from the State of Louisiana, situated in Cameron Parish, Louisiana, and being more fully described as follows: Beginning at a point on the Coastline as per the Supreme Court Decree dated June 16, 1975, having Coordinates of X = 1,401,700.00 and Y = 408,443.53; thence South 5,183.53 feet to a point having Coordinates of X = 1,401,700.00 and Y = 403,260.00; thence West 10,248.29 feet to a point on the West line of Block 3, West Cameron Area, Revised, having Coordinates of X = 1,391,451.71 and Y = 403,260.00; thence North 5,980.45 feet along the West line of said Block 3 to its Northwest corner, said corner also being a point on said Coastline, having Coordinates of X = 1,391,451.71 and Y = 409,240.45; thence along the boundary of said Coastline the following courses: Northeasterly on a straight line to a point having Coordinates of X = 1,391,954 and Y = 409,243; Southeasterly on a straight line to a point having Coordinates of X = 1,392,000 and Y = 409,180; Southeasterly on a straight line to a point having Coordinates of X = 1,397,220 and Y = 408,870 and Southeasterly on a straight line to the Point of Beginning, containing **1,321.15 acres**, all as more particularly outlined on a plat on file in the Office of Mineral Resources, Department of Natural Resources. All bearings, distances and coordinates are based on Louisiana Coordinate System of 1927, (North or South Zone), where applicable.

NOTE: The above description of the Tract nominated for lease has been provided and corrected, where required, exclusively by the nomination party. Any mineral lease selected from this Tract and awarded by the Louisiana State Mineral and Energy Board shall be without warranty of any kind, either express, implied, or statutory, including, but not limited to, the implied warranties of merchantability and fitness for a particular purpose. Should the mineral lease awarded by the Louisiana State Mineral and Energy Board be subsequently modified, cancelled or abrogated due to the existence of conflicting leases, operating agreements, private claims or other future obligations or conditions which may affect all or any portion of the leased Tract, it shall not relieve the Lessee of the obligation to pay any bonus due thereon to the Louisiana State Mineral and Energy Board, nor shall the Louisiana State Mineral and Energy Board be obligated to refund any consideration paid by the Lessor prior to such modification, cancellation, or abrogation, including, but not limited to, bonuses, rentals and royalties.

NOTE: The State of Louisiana does hereby reserve, and this lease shall be subject to, the imprescriptible right of surface use in the nature of a servitude in favor of the Department of Natural Resources, including its Offices and Commissions, for the sole purpose of implementing, constructing, servicing and maintaining approved coastal zone management and/or restoration projects. Utilization of any and all rights derived under this lease by the mineral lessee, its agents, successors or assigns,

shall not interfere with nor hinder the reasonable surface use by the Department of Natural Resources, its Offices or Commissions, as herein above reserved.

Applicant: WAINWRIGHT & BOYER LAND SERVICES, LLC

Bidder	Cash Payment	Price/Acre	Rental	Oil	Gas	Other

Legend
10110007
Blocks

CAMERON PARISH

T15S - R9W

P.O.B.

WEST CAMERON AREA, REVISED

WC0003



GULF OF MEXICO

WC0004

Legend
10110007
Blocks

CAMERON PARISH

T15S - R9W

P.O.B.

WEST CAMERON AREA, REVISED

WC0003



GULF OF MEXICO

WC0004

TRACT 41687 - Cameron Parish, Louisiana

All lands, including lands added by accretion and reliction and lands now or formerly constituting the beds and bottoms of all water bodies of every nature and description, owned by and not presently under mineral lease as of November 10, 2010 from the State of Louisiana, situated in Cameron Parish, Louisiana, and being more fully described as follows: Beginning at a point within Block 3, West Cameron Area, Revised, having Coordinates of X = 1,401,700.00 and Y = 398,175.00; thence North 10,268.53 feet to a point on the Coastline as per the Supreme Court Decree dated June 16, 1975, having Coordinates of X = 1,401,700.00 and Y = 408,443.53; thence along said Coastline the following courses: Southeasterly on a straight line to a point having Coordinates of X = 1,402,525.00 and Y = 408,365.00; Southeasterly on a straight line to the Northeast corner of said Block 3, said corner also being the Northwest corner of Block 2, West Cameron Area, Revised, having Coordinates of X = 1,405,806.20 and Y = 407,818.13; Southeasterly on a straight line to a point having Coordinates of X = 1,410,175.00 and Y = 407,090.00; and Southeasterly on a straight line to a point on the North line of State Lease No. 18423 having Coordinates of X = 1,411,288.31 and Y = 406,840.00; thence along the boundary of said State Lease No. 18423 the following courses: West 2,720.31 feet to a point having Coordinates of X = 1,408,568.00 and Y = 406,840.00; South 1,130.00 feet to a point having a Coordinates of X = 1,408,568.00 and Y = 405,710.00; West 2,288.00 feet to a point having Coordinates of X = 1,406,280.00 and Y = 405,710.00; and South 3,010.00 feet to its Southwest corner, said corner also being the Northwest corner of State Lease No. 18521, having Coordinates of X = 1,406,280.00 and Y = 402,700.00; thence South 1,617.26 feet along the West line of said State Lease No. 18521 to its Southwest corner, said corner also being the Northwest corner of said State Lease No. 19031, as amended, having Coordinates of X = 1,406,280.00 and Y = 401,082.74; thence along the boundary of said State Lease No. 19031 the following courses: South 08 degrees 21 minutes 08 seconds East 738.45 feet to a point having Coordinates of X = 1,406,387.27 and Y = 400,352.12 and East 2,211.73 feet to its Southeast corner said, corner also being a point on the West line of State Lease No. 18524, having Coordinates of X = 1,408,599.00 and Y = 400,352.12; thence South 2,177.12 feet along the West line of said State Lease No. 18524 to its Southwest corner having Coordinates of X = 1,408,599.00 and Y = 398,175.00; thence West 2,792.80 feet to a point on the common boundary line between said Block 2 and said Block 3 having Coordinates of X = 1,405,806.20 and Y = 398,175.00; thence West 4,106.20 feet to the Point of Beginning, containing **1,275.90 acres**, all as more particularly outlined on a plat on file in the Office of Mineral Resources, Department of Natural Resources. All bearings, distances and coordinates are based on Louisiana Coordinate System of 1927, (North or South Zone), where applicable.

NOTE: The above description of the Tract nominated for lease has been provided and corrected, where required, exclusively by the nomination party. Any mineral lease selected from this Tract and awarded by the Louisiana State Mineral and Energy Board shall be without warranty of any

kind, either express, implied, or statutory, including, but not limited to, the implied warranties of merchantability and fitness for a particular purpose. Should the mineral lease awarded by the Louisiana State Mineral and Energy Board be subsequently modified, cancelled or abrogated due to the existence of conflicting leases, operating agreements, private claims or other future obligations or conditions which may affect all or any portion of the leased Tract, it shall not relieve the Lessee of the obligation to pay any bonus due thereon to the Louisiana State Mineral and Energy Board, nor shall the Louisiana State Mineral and Energy Board be obligated to refund any consideration paid by the Lessor prior to such modification, cancellation, or abrogation, including, but not limited to, bonuses, rentals and royalties.

NOTE: The State of Louisiana does hereby reserve, and this lease shall be subject to, the imprescriptible right of surface use in the nature of a servitude in favor of the Department of Natural Resources, including its Offices and Commissions, for the sole purpose of implementing, constructing, servicing and maintaining approved coastal zone management and/or restoration projects. Utilization of any and all rights derived under this lease by the mineral lessee, its agents, successors or assigns, shall not interfere with nor hinder the reasonable surface use by the Department of Natural Resources, its Offices or Commissions, as herein above reserved.

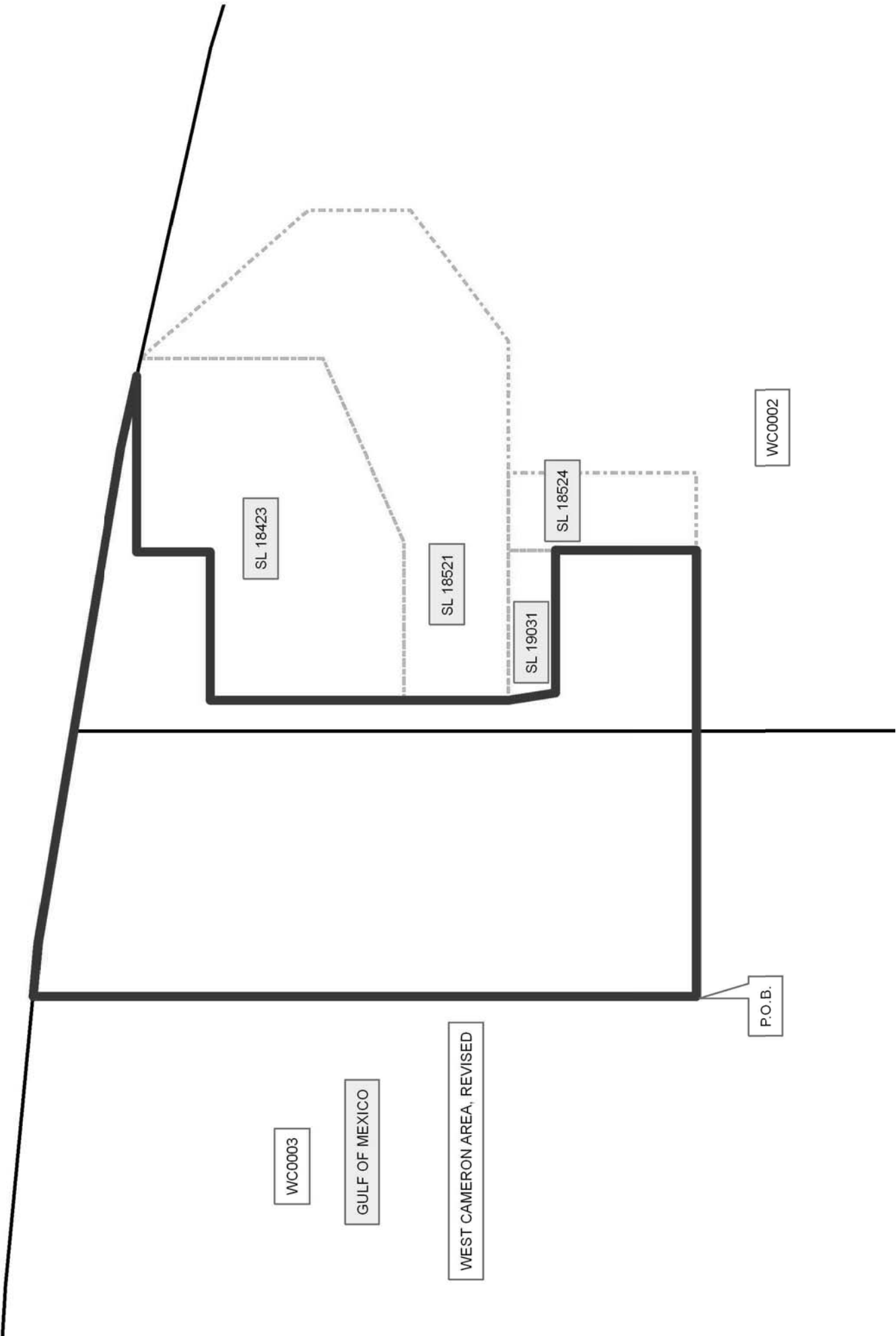
Applicant: WAINWRIGHT & BOYER LAND SERVICES, LLC

Bidder	Cash Payment	Price/Acre	Rental	Oil	Gas	Other

Legend

- 10110010
- Blocks
- Active Leases

CAMERON PARISH



TRACT 41688 - Cameron Parish, Louisiana

All lands, including lands added by accretion and reliction and lands now or formerly constituting the beds and bottoms of all water bodies of every nature and description, owned by and not presently under mineral lease as of November 10, 2010 from the State of Louisiana, situated in Cameron Parish, Louisiana, and being more fully described as follows: Beginning at a the Northeast corner of Block 2, West Cameron Area, Revised, said corner also being a point on the Coastline as per the Supreme Court Decree dated June 16, 1975, having Coordinates of X = 1,421,416.19 and Y = 404,156.83; thence South 10,366.59 feet along the East line of said Block 2 to its Southeast corner having Coordinates of X = 1,421,416.19 and Y = 393,790.24; thence West 1,651.19 feet along the South line of said Block 2 to the Northeast corner of State Lease No. 20286 having Coordinates of X = 1,419,765.00 and Y = 393,790.24; thence West 5,427.00 feet along the North line of said State Lease No. 20286 to its Northwest corner having Coordinates of X = 1,414,338.00 and Y = 393,790.24; thence West 482.00 feet along the South line of said Block 2 to a point having Coordinates of X = 1,413,856.00 and Y = 393,790.24; thence North 5,659.76 feet to a point on the East line of State Lease No. 19190 having Coordinates of X = 1,413,856.00 and Y = 399,450.00; thence North 3,156.00 feet along the East line of said State Lease No. 19190 to its Northeast corner, said corner also being the most Easterly Southeast corner of State Lease No. 18521, having Coordinates of X = 1,413,856.00 and Y = 402,606.00; thence along the boundary of said State Lease No. 18521 the following courses: North 1,576.00 feet to a point having Coordinates of X = 1,413,856.00 and Y = 404,182.00 and North 41 degrees 25 minutes 49 seconds West 3,462.25 feet to a point on the said Coastline having Coordinates of X = 1,411,565.00 and Y = 406,777.87; thence along said Coastline the following courses: Southeasterly on a straight line to a point having Coordinates of X = 1,416,365 and Y = 405,700 and Southeasterly on a straight line to the Point of Beginning, containing **2,048.52 acres**, all as more particularly outlined on a plat on file in the Office of Mineral Resources, Department of Natural Resources. All bearings, distances and coordinates are based on Louisiana Coordinate System of 1927, (North or South Zone), where applicable.

NOTE: The above description of the Tract nominated for lease has been provided and corrected, where required, exclusively by the nomination party. Any mineral lease selected from this Tract and awarded by the Louisiana State Mineral and Energy Board shall be without warranty of any kind, either express, implied, or statutory, including, but not limited to, the implied warranties of merchantability and fitness for a particular purpose. Should the mineral lease awarded by the Louisiana State Mineral and Energy Board be subsequently modified, cancelled or abrogated due to the existence of conflicting leases, operating agreements, private claims or other future obligations or conditions which may affect all or any portion of the leased Tract, it shall not relieve the Lessee of the obligation to pay any bonus due thereon to the Louisiana State Mineral and Energy Board, nor shall the Louisiana State Mineral and Energy Board be

obligated to refund any consideration paid by the Lessor prior to such modification, cancellation, or abrogation, including, but not limited to, bonuses, rentals and royalties.

NOTE: The State of Louisiana does hereby reserve, and this lease shall be subject to, the imprescriptible right of surface use in the nature of a servitude in favor of the Department of Natural Resources, including its Offices and Commissions, for the sole purpose of implementing, constructing, servicing and maintaining approved coastal zone management and/or restoration projects. Utilization of any and all rights derived under this lease by the mineral lessee, its agents, successors or assigns, shall not interfere with nor hinder the reasonable surface use by the Department of Natural Resources, its Offices or Commissions, as herein above reserved.

Applicant: WAINWRIGHT & BOYER LAND SERVICES, LLC

Bidder	Cash Payment	Price/Acre	Rental	Oil	Gas	Other

Legend

- 10110013
- Blocks
- Active Leases

CAMERON PARISH

GULF OF MEXICO

WEST CAMERON AREA, REVISED

WC0001

P.O.B.

SL 20286

WC0002

SL 18521

SL 19190

SL 18423

0 1,980 Feet



TRACT 41689 - Cameron Parish, Louisiana

All lands, including lands added by accretion and reliction and lands now or formerly constituting the beds and bottoms of all water bodies of every nature and description, owned by and not presently under mineral lease as of November 10, 2010 from the State of Louisiana, situated in Cameron Parish, Louisiana, and being more fully described as follows: Beginning at a point on the South line of Block 1, West Cameron Area, Revised, having Coordinates of X = 1,429,020.00 and Y = 393,790.24; thence West 7,603.81 feet along the South line of said Block 1 to its Southwest corner having Coordinates of X = 1,421,416.19 and Y = 393,790.24; thence North 10,366.59 feet along the West line of said Block 1 to its Northwest corner, said corner also being a point on the Coastline as per the Supreme Court Decree dated June 16, 1975, having Coordinates of X = 1,421,416.19 and Y = 404,156.83; thence along said Coastline the following courses: Southeasterly on a straight line to a point having Coordinates of X = 1,424,630 and Y = 403,175; Southeasterly on a straight line to a point having Coordinates of X = 1,425,600 and Y = 402,610; Southeasterly on a straight line to a point having Coordinates of X = 1,429,035 and Y = 401,760; and Southwesterly on a straight line to a point having Coordinates of X = 1,429,020 and Y = 401,485; thence South 7,694.76 feet to the Point of Beginning, containing **1,590.59 acres**, all as more particularly outlined on a plat on file in the Office of Mineral Resources, Department of Natural Resources. All bearings, distances and coordinates are based on Louisiana Coordinate System of 1927, (North or South Zone), where applicable.

NOTE: The above description of the Tract nominated for lease has been provided and corrected, where required, exclusively by the nomination party. Any mineral lease selected from this Tract and awarded by the Louisiana State Mineral and Energy Board shall be without warranty of any kind, either express, implied, or statutory, including, but not limited to, the implied warranties of merchantability and fitness for a particular purpose. Should the mineral lease awarded by the Louisiana State Mineral and Energy Board be subsequently modified, cancelled or abrogated due to the existence of conflicting leases, operating agreements, private claims or other future obligations or conditions which may affect all or any portion of the leased Tract, it shall not relieve the Lessee of the obligation to pay any bonus due thereon to the Louisiana State Mineral and Energy Board, nor shall the Louisiana State Mineral and Energy Board be obligated to refund any consideration paid by the Lessor prior to such modification, cancellation, or abrogation, including, but not limited to, bonuses, rentals and royalties.

NOTE: The State of Louisiana does hereby reserve, and this lease shall be subject to, the imprescriptible right of surface use in the nature of a servitude in favor of the Department of Natural Resources, including its Offices and Commissions, for the sole purpose of implementing, constructing, servicing and maintaining approved coastal zone management and/or restoration projects. Utilization of any and all rights derived

under this lease by the mineral lessee, its agents, successors or assigns, shall not interfere with nor hinder the reasonable surface use by the Department of Natural Resources, its Offices or Commissions, as herein above reserved.

Applicant: WAINWRIGHT & BOYER LAND SERVICES, LLC

Bidder	Cash Payment	Price/Acre	Rental	Oil	Gas	Other

Legend

10110014
Blocks

CAMERON PARISH

T15S - R8W



GULF OF MEXICO

WC0002

WEST CAMERON AREA, REVISED

WC0001

P.O.B.

WC0030

TRACT 41690 - Portion of Blocks 3, and 4, West Cameron Area, Revised, Cameron Parish, Louisiana

The beds and bottoms of all water bodies belonging to the State of Louisiana located in Blocks 3, and 4, West Cameron Area, Revised, together with any present lands formed by accretion to the shoreline or islands formed therein, located in Cameron Parish, Louisiana, owned by and not presently under mineral lease as of November 10, 2010, from the State of Louisiana, the geographical area of which is more fully described as follows: Beginning at a point within Block 3, West Cameron Area, Revised, having Coordinates of X = 1,401,700.00 and Y = 398,175.00; thence West 10,248.29 feet to a point on the West line of said Block 3 having Coordinates of X = 1,391,451.71 and Y = 398,175.00; thence North 5,085.00 feet along the West line of said Block 3 to a point having Coordinates of X = 1,391,451.71 and Y = 403,260.00; thence East 10,248.29 feet to a point having Coordinates of X = 1,401,700.00 and Y = 403,260.00; thence South 5,085.00 feet to the Point of Beginning, containing **1,196.34 acres**, all as more particularly outlined on a plat on file in the Office of Mineral Resources, Department of Natural Resources. All bearings, distances and coordinates are based on Louisiana Coordinate System of 1927, (North or South Zone).

NOTE: The above description of the Tract nominated for lease has been provided and corrected, where required, exclusively by the nomination party. Any mineral lease selected from this Tract and awarded by the Louisiana State Mineral and Energy Board shall be without warranty of any kind, either express, implied, or statutory, including, but not limited to, the implied warranties of merchantability and fitness for a particular purpose. Should the mineral lease awarded by the Louisiana State Mineral and Energy Board be subsequently modified, cancelled or abrogated due to the existence of conflicting leases, operating agreements, private claims or other future obligations or conditions which may affect all or any portion of the leased Tract, it shall not relieve the Lessee of the obligation to pay any bonus due thereon to the Louisiana State Mineral and Energy Board, nor shall the Louisiana State Mineral and Energy Board be obligated to refund any consideration paid by the Lessor prior to such modification, cancellation, or abrogation, including, but not limited to, bonuses, rentals and royalties.

NOTE: The State of Louisiana does hereby reserve, and this lease shall be subject to, the imprescriptible right of surface use in the nature of a servitude in favor of the Department of Natural Resources, including its Offices and Commissions, for the sole purpose of implementing, constructing, servicing and maintaining approved coastal zone management and/or restoration projects. Utilization of any and all rights derived under this lease by the mineral lessee, its agents, successors or assigns, shall not interfere with nor hinder the reasonable surface use by the Department of Natural Resources, its Offices or Commissions, as herein above reserved.

Applicant: WAINWRIGHT & BOYER LAND SERVICES, LLC

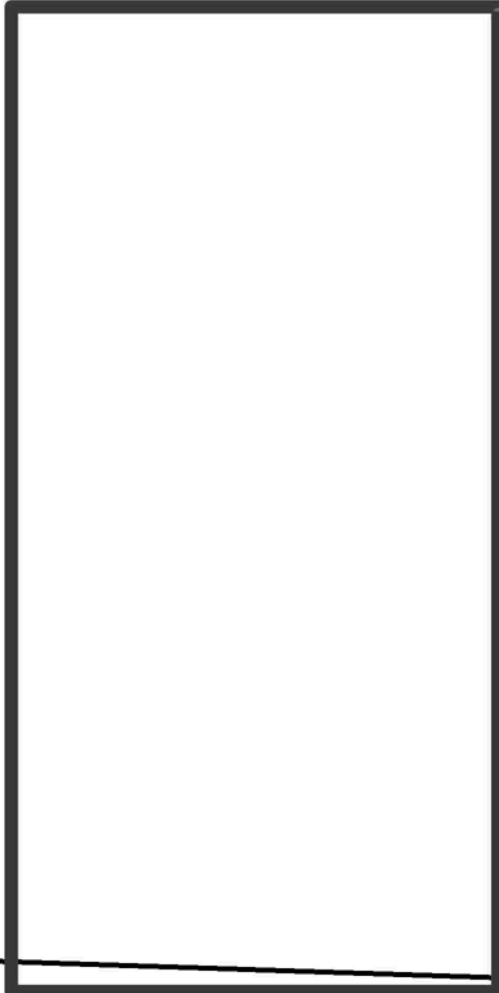
Bidder	Cash Payment	Price/Acre	Rental	Oil	Gas	Other

Legend
10110008
Blocks

CAMERON PARISH

GULF OF MEXICO

WC0003



P.O.B.

WEST CAMERON AREA, REVISED

WC0004



TRACT 41691 - Cameron Parish, Louisiana

All lands, including lands added by accretion and reliction and lands now or formerly constituting the beds and bottoms of all water bodies of every nature and description, owned by and not presently under mineral lease as of November 10, 2010 from the State of Louisiana, situated in Cameron Parish, Louisiana, and being more fully described as follows: Beginning at a point on the South line of Block 1, West Cameron Area, Revised, having Coordinates of X = 1,429,020.00 and Y = 393,790.24; thence North 7,694.76 feet to a point on the Coastline as per the Supreme Court Decree dated June 16, 1975, having Coordinates of X = 1,429,020 and Y = 401,485; thence along said Coastline the following courses: Southeasterly on a straight line to a point having Coordinates of X = 1,431,465 and Y = 400,740; Southeasterly on a straight line to a point having Coordinates of X = 1,436,899 and Y = 399,820; and Southeasterly on a straight line to the Northwest corner of State Lease No. 19098 having Coordinates of X = 1,437,438.02 and Y = 399,623.71; thence along the boundary of said State Lease No. 19098 the following courses: South 17 degrees 31 minutes 32 seconds West 93.03 feet to a point having Coordinates of X = 1,437,410.00 and Y = 399,535.00; South 390.00 feet to a point having Coordinates of X = 1,437,410.00 and Y = 399,145.00; and South 88 degrees 37 minutes 31 seconds East 368.73 feet to its Southeast corner, said corner also being a point on the Western boundary of State Lease No. 12725, as amended, having Coordinates of X = 1,437,778.63 and Y = 399,136.15; thence along the boundary of said State Lease No. 12725, as amended, the following courses: South 01 degrees 54 minutes 33 seconds East 41.18 feet to a point having Coordinates of X = 1,437,780.00 and Y = 399,095.00 and South 14 degrees 02 minutes 11 seconds East 175.23 feet to the most Northerly Northeast corner of State Lease No. 18949 having Coordinates of X = 1,437,822.50 and Y = 398,925.00; thence along the boundary of said State Lease No. 18949 the following courses: West 2,096.64 feet to a point having Coordinates of X = 1,435,725.86 and Y = 398,925.00 and South 5,134.76 feet to a point on the South line of said Block 1 having Coordinates of X = 1,435,725.86 and Y = 393,790.24; thence West 6,705.86 along the South line of said Block 1 to the Point of Beginning, containing **1,094.41 acres**, all as more particularly outlined on a plat on file in the Office of Mineral Resources, Department of Natural Resources. All bearings, distances and coordinates are based on Louisiana Coordinate System of 1927, (North or South Zone), where applicable.

NOTE: The above description of the Tract nominated for lease has been provided and corrected, where required, exclusively by the nomination party. Any mineral lease selected from this Tract and awarded by the Louisiana State Mineral and Energy Board shall be without warranty of any kind, either express, implied, or statutory, including, but not limited to, the implied warranties of merchantability and fitness for a particular purpose. Should the mineral lease awarded by the Louisiana State Mineral and Energy Board be subsequently modified, cancelled or abrogated due to the existence of conflicting leases, operating agreements, private claims or other future obligations or conditions which may affect all or any


portion of the leased Tract, it shall not relieve the Lessee of the obligation to pay any bonus due thereon to the Louisiana State Mineral and Energy Board, nor shall the Louisiana State Mineral and Energy Board be obligated to refund any consideration paid by the Lessor prior to such modification, cancellation, or abrogation, including, but not limited to, bonuses, rentals and royalties.

NOTE: The State of Louisiana does hereby reserve, and this lease shall be subject to, the imprescriptible right of surface use in the nature of a servitude in favor of the Department of Natural Resources, including its Offices and Commissions, for the sole purpose of implementing, constructing, servicing and maintaining approved coastal zone management and/or restoration projects. Utilization of any and all rights derived under this lease by the mineral lessee, its agents, successors or assigns, shall not interfere with nor hinder the reasonable surface use by the Department of Natural Resources, its Offices or Commissions, as herein above reserved.

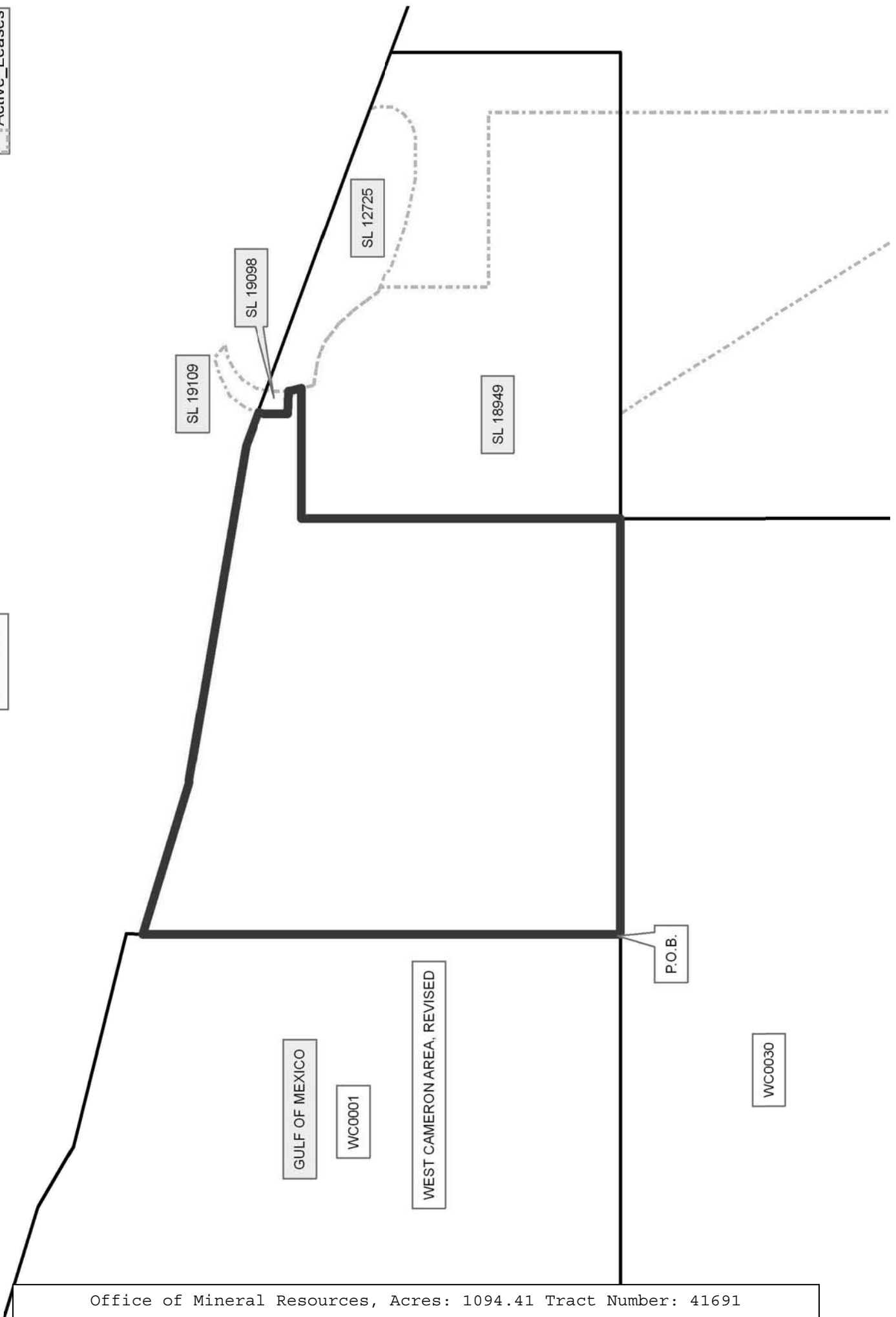
Applicant: WAINWRIGHT & BOYER LAND SERVICES, LLC

Bidder	Cash Payment	Price/Acre	Rental	Oil	Gas	Other

Legend

-  10110015
-  Blocks
-  Active_Leases

CAMERON PARISH
T15S - R7W



TRACT 41692 - Portion of Blocks 2, and 3, West Cameron Area, Revised, Cameron Parish, Louisiana

The beds and bottoms of all water bodies belonging to the State of Louisiana located in Blocks 2, and 3, West Cameron Area, Revised, together with any present lands formed by accretion to the shoreline or islands formed therein, located in Cameron Parish, Louisiana, owned by and not presently under mineral lease as of November 10, 2010, from the State of Louisiana, the geographical area of which is more fully described as follows: Beginning at a point within Block 3, West Cameron Area, Revised, having Coordinates of X = 1,401,700.00 and Y = 398,175.00; thence East 4,106.20 feet to a point on the common boundary line of said Block 3 and Block 2, West Cameron Area, Revised, having Coordinates of X = 1,405,806.20 and Y = 398,175.00; thence East 2,792.80 feet to the Southwest corner of State Lease No. 18524 having Coordinates of X = 1,408,599.00 and Y = 398,175.00; thence East 1,201.00 feet along the South line of said State Lease No. 18524 to its Southeast corner, said corner also being the Southwest corner of State Lease No. 19192, having Coordinates of X = 1,409,800.00 and Y = 398,175.00; thence along the boundary of said State Lease No. 19192 the following courses: South 63 degrees 26 minutes 06 seconds East 2,403.77 feet to a point having Coordinates of X = 1,411,950.00 and Y = 397,100.00 and North 39 degrees 02 minutes 39 seconds East 2,341.10 feet to its Northeast corner, said corner also being the Southeast corner of State Lease No. 19190, having Coordinates of X = 1,413,424.71 and Y = 398,918.24; thence North 39 degrees 02 minutes 39 seconds East 684.68 feet along the Southeastern boundary of said State Lease No. 19190 to its most Northern Southeast corner having Coordinates of X = 1,413,856.00 and Y = 399,450.00; thence South 5,659.76 feet to the South line of said Block 2 having Coordinates of X = 1,413,856.00 and Y = 393,790.24; thence West 8,049.80 feet along the South line of said Block 2 to its Southwest corner, said corner also being the Southeast corner of said Block 3, having Coordinates of X = 1,406,209.76 and Y = 393,790.24; thence West 4,106.20 feet along the South line of said Block 3, to a point having Coordinates of X = 1,401,700.00 and Y = 393,790.24; thence North 4,384.76 feet to the Point of Beginning, containing **1,201.47 acres**, all as more particularly outlined on a plat on file in the Office of Mineral Resources, Department of Natural Resources. All bearings, distances and coordinates are based on Louisiana Coordinate System of 1927, (North or South Zone).

NOTE: The above description of the Tract nominated for lease has been provided and corrected, where required, exclusively by the nomination party. Any mineral lease selected from this Tract and awarded by the Louisiana State Mineral and Energy Board shall be without warranty of any kind, either express, implied, or statutory, including, but not limited to, the implied warranties of merchantability and fitness for a particular purpose. Should the mineral lease awarded by the Louisiana State Mineral and Energy Board be subsequently modified, cancelled or abrogated due to the existence of conflicting leases, operating agreements, private claims or other future obligations or conditions which may affect all or any

portion of the leased Tract, it shall not relieve the Lessee of the obligation to pay any bonus due thereon to the Louisiana State Mineral and Energy Board, nor shall the Louisiana State Mineral and Energy Board be obligated to refund any consideration paid by the Lessor prior to such modification, cancellation, or abrogation, including, but not limited to, bonuses, rentals and royalties.

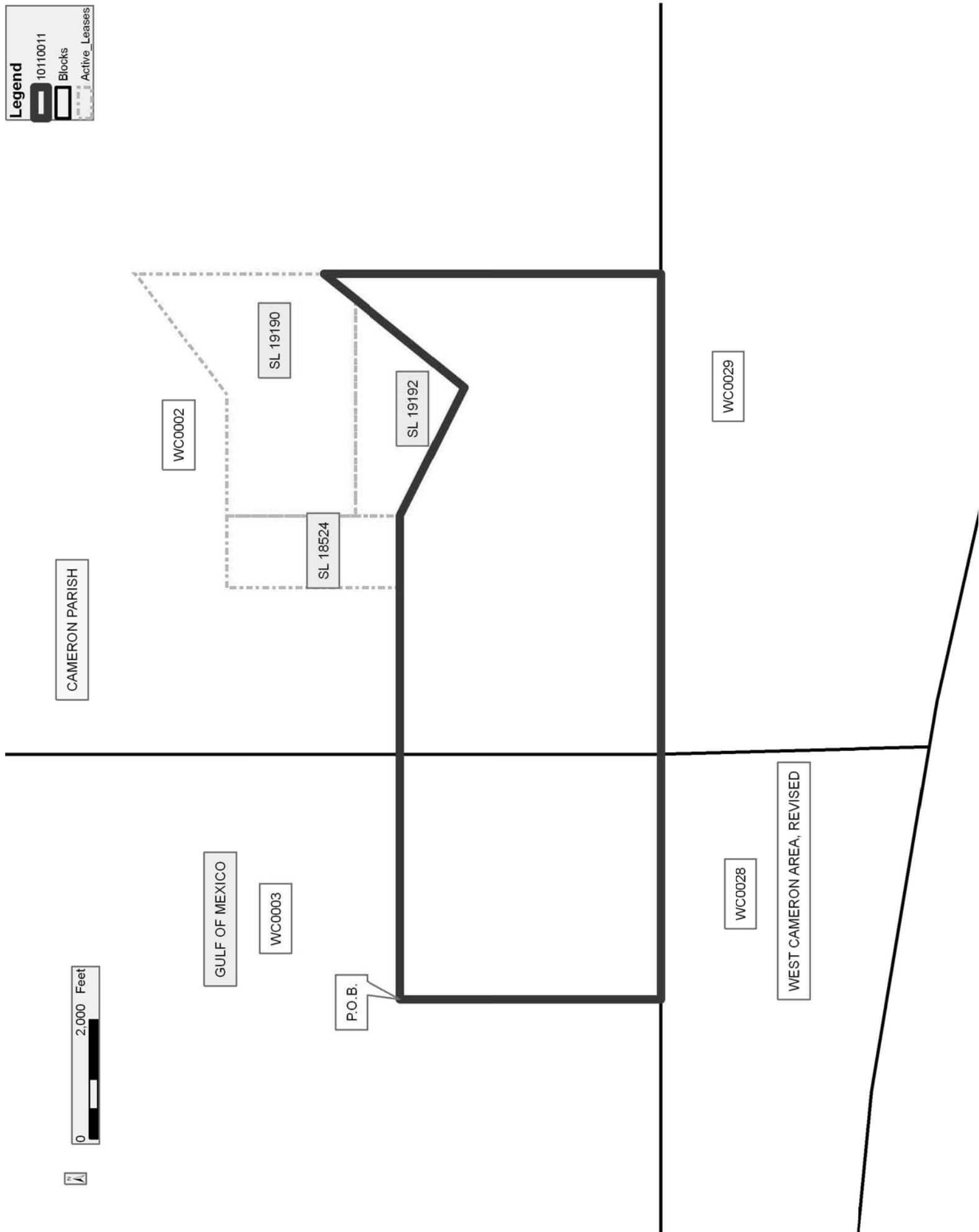
NOTE: The State of Louisiana does hereby reserve, and this lease shall be subject to, the imprescriptible right of surface use in the nature of a servitude in favor of the Department of Natural Resources, including its Offices and Commissions, for the sole purpose of implementing, constructing, servicing and maintaining approved coastal zone management and/or restoration projects. Utilization of any and all rights derived under this lease by the mineral lessee, its agents, successors or assigns, shall not interfere with nor hinder the reasonable surface use by the Department of Natural Resources, its Offices or Commissions, as herein above reserved.

Applicant: WAINWRIGHT & BOYER LAND SERVICES, LLC

Bidder	Cash Payment	Price/Acre	Rental	Oil	Gas	Other

Legend

- 10110011
- Blocks
- Active Leases



TRACT 41693 - Portion of Blocks 27, and 4, West Cameron Area, Revised, Cameron Parish, Louisiana

The beds and bottoms of all water bodies belonging to the State of Louisiana located in Blocks 27, and 4, West Cameron Area, Revised, together with any present lands formed by accretion to the shoreline or islands formed therein, located in Cameron Parish, Louisiana, owned by and not presently under mineral lease as of November 10, 2010, from the State of Louisiana, the geographical area of which is more fully described as follows: Beginning at a point within Block 4, West Cameron Area, Revised, having Coordinates of X = 1,384,500.00 and Y = 398,175.00; thence East 6,951.71 feet to a point on the East line of said Block 4 having Coordinates of X = 1,391,451.71 and Y = 398,175.00; thence South 4,384.76 feet along the East line of said Block 4 to its Southeast corner, said corner also being the Northeast corner of Block 27, West Cameron Area, Revised, having Coordinates of X = 1,391,451.71 and Y = 393,790.24; thence South 2,850.79 feet along the East line of said Block 27 to a point on the Three Mile Decree line derived from the June 16, 1975 Decree in the United States vs. Louisiana No. 9 Original, having Coordinates of X = 1,391,451.71 and Y = 390,939.45; thence along said Three Mile Decree line the following courses: Northwesterly on a straight line to a point having Coordinates of X = 1,390,919.00 and Y = 390,971.00; along an arc with a radius of 18,240.60 feet and a center of X = 1,392,016.46 and Y = 409,178.56 to a point having Coordinates of X = 1,390,575.00 and Y = 390,995.00; Southwesterly on a straight line to a point having Coordinates of X = 1,386,958.00 and Y = 390,977.00; Southwesterly on a straight line to a point having Coordinates of X = 1,385,797.00 and Y = 390,942.00; and Southwesterly on a straight line to a point having Coordinates of X = 1,384,500.00 and Y = 390,722.40; thence North 3,067.84 feet to a point on the Common boundary line between said Block 27 and said Block 4 having Coordinates of X = 1,384,500.00 and Y = 393,790.24; thence North 4,384.76 feet to the Point of Beginning, containing **1,152.98 acres, LESS AND EXCEPT** that portion thereof, if any, lying seaward of the line three nautical miles from the coast line of Louisiana, as said three mile line has been decreed by the Supreme Court of the United States, as determined by a Special Master appointed therein, in litigation styled **United States v. State of Louisiana et al No. 9 Original**, in 1975, all as more particularly outlined on a plat in the Office of Mineral Resources, Department of Natural Resources. All bearings, distances and coordinates are based on the Louisiana Coordinate System of 1927, (South Zone).

NOTE: The above description of the Tract nominated for lease has been provided and corrected, where required, exclusively by the nomination party. Any mineral lease selected from this Tract and awarded by the Louisiana State Mineral and Energy Board shall be without warranty of any kind, either express, implied, or statutory, including, but not limited to, the implied warranties of merchantability and fitness for a particular purpose. Should the mineral lease awarded by the Louisiana State Mineral and Energy Board be subsequently modified, cancelled or abrogated due to the existence of conflicting leases, operating agreements, private claims

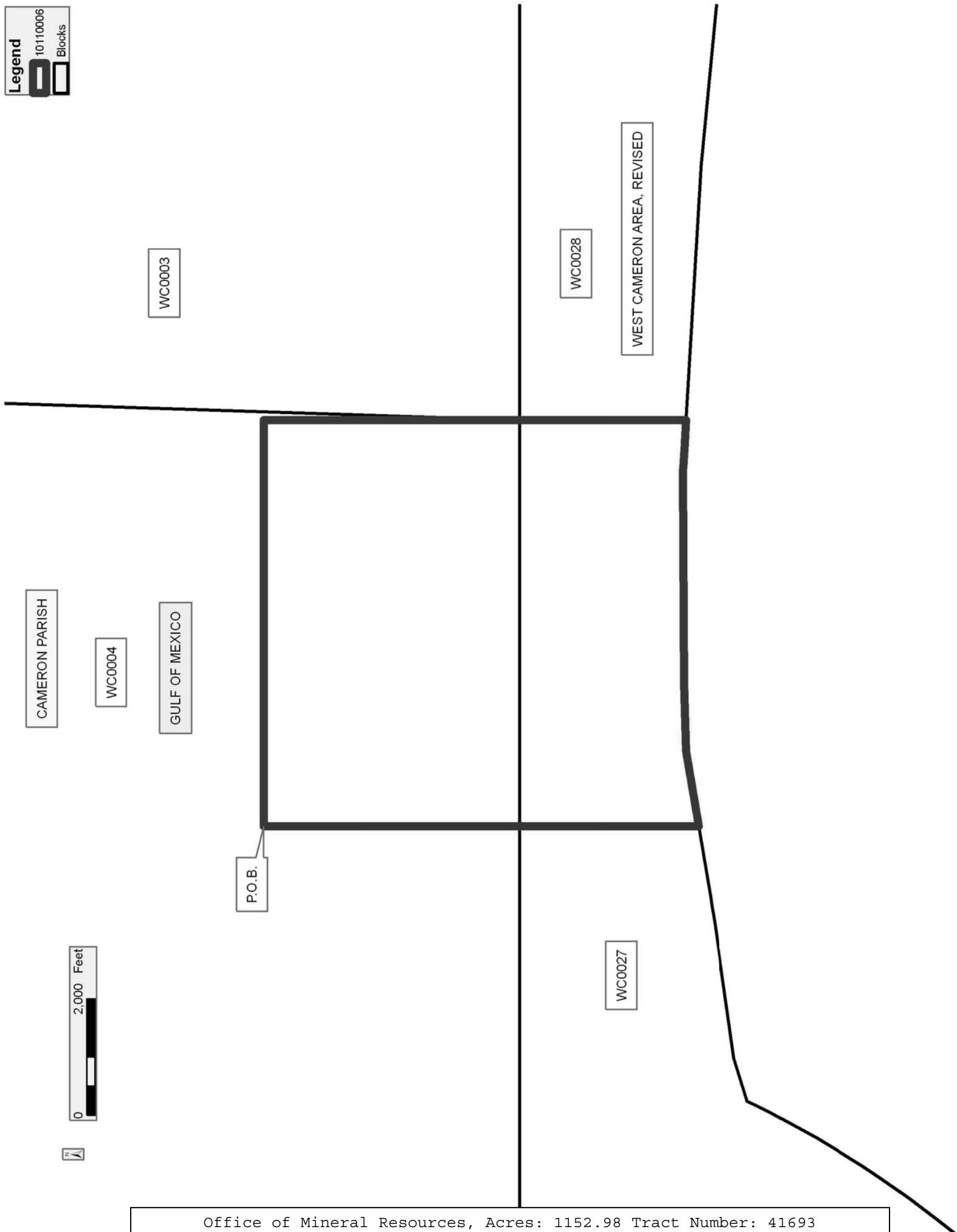
or other future obligations or conditions which may affect all or any portion of the leased Tract, it shall not relieve the Lessee of the obligation to pay any bonus due thereon to the Louisiana State Mineral and Energy Board, nor shall the Louisiana State Mineral and Energy Board be obligated to refund any consideration paid by the Lessor prior to such modification, cancellation, or abrogation, including, but not limited to, bonuses, rentals and royalties.

NOTE: The State of Louisiana does hereby reserve, and this lease shall be subject to, the imprescriptible right of surface use in the nature of a servitude in favor of the Department of Natural Resources, including its Offices and Commissions, for the sole purpose of implementing, constructing, servicing and maintaining approved coastal zone management and/or restoration projects. Utilization of any and all rights derived under this lease by the mineral lessee, its agents, successors or assigns, shall not interfere with nor hinder the reasonable surface use by the Department of Natural Resources, its Offices or Commissions, as herein above reserved.

Applicant: WAINWRIGHT & BOYER LAND SERVICES, LLC

Bidder	Cash Payment	Price/Acre	Rental	Oil	Gas	Other

Legend
10110006
Blocks



TRACT 41694 - Portion of Blocks 28, 3, and 4, West Cameron Area, Revised, Cameron Parish, Louisiana

The beds and bottoms of all water bodies belonging to the State of Louisiana located in Blocks 28, 3, and 4, West Cameron Area, Revised, together with any present lands formed by accretion to the shoreline or islands formed therein, located in Cameron Parish, Louisiana, owned by and not presently under mineral lease as of November 10, 2010, from the State of Louisiana, the geographical area of which is more fully described as follows: Beginning at a point within Block 3, West Cameron Area, Revised, having Coordinates of X = 1,401,700.00 and Y = 398,175.00; thence South 4,384.76 feet to a point on the common boundary line of said Block 3 and Block 28, West Cameron Area, Revised, having Coordinates of X = 1,401,700.00 and Y = 393,790.24; thence South 3,780.20 feet to a point on the Three Mile Decree line derived from the June 16, 1975 Decree in the United States vs. Louisiana No. 9 Original, having Coordinates of X = 1,401,700.00 and Y = 390,010.04; thence along the said Three Mile Decree the following courses: Northwesterly on a straight line to a point having Coordinates of X = 1,400,158 and Y = 390,267; Northwesterly on a straight line to a point having Coordinates of X = 1,395,815 and Y = 390,681; and Northwesterly on a straight line to a point on the West line of said Block 28 having Coordinates of X = 1,391,451.71 and Y = 390,939.45; thence North 2,850.79 feet to along the West line of said Block 28 to its Northwest corner, said corner also being the Southwest corner of said Block 3, having Coordinates of X = 1,391,451.71 and Y = 393,790.24; thence North 4,384.76 feet along the West line of said Block 3 to a point having Coordinates of X = 1,391,451.71 and Y = 398,175.00; thence East 10,248.29 feet to the Point of Beginning, containing **1,790.00 acres, LESS AND EXCEPT** that portion thereof, if any, lying seaward of the line three nautical miles from the coast line of Louisiana, as said three mile line has been decreed by the Supreme Court of the United States, as determined by a Special Master appointed therein, in litigation styled **United States v. State of Louisiana et al No. 9 Original**, in 1975, all as more particularly outlined on a plat in the Office of Mineral Resources, Department of Natural Resources. All bearings, distances and coordinates are based on the Louisiana Coordinate System of 1927, (South Zone).

NOTE: The above description of the Tract nominated for lease has been provided and corrected, where required, exclusively by the nomination party. Any mineral lease selected from this Tract and awarded by the Louisiana State Mineral and Energy Board shall be without warranty of any kind, either express, implied, or statutory, including, but not limited to, the implied warranties of merchantability and fitness for a particular purpose. Should the mineral lease awarded by the Louisiana State Mineral and Energy Board be subsequently modified, cancelled or abrogated due to the existence of conflicting leases, operating agreements, private claims or other future obligations or conditions which may affect all or any portion of the leased Tract, it shall not relieve the Lessee of the obligation to pay any bonus due thereon to the Louisiana State Mineral and Energy Board, nor shall the Louisiana State Mineral and Energy Board be

obligated to refund any consideration paid by the Lessor prior to such modification, cancellation, or abrogation, including, but not limited to, bonuses, rentals and royalties.

NOTE: The State of Louisiana does hereby reserve, and this lease shall be subject to, the imprescriptible right of surface use in the nature of a servitude in favor of the Department of Natural Resources, including its Offices and Commissions, for the sole purpose of implementing, constructing, servicing and maintaining approved coastal zone management and/or restoration projects. Utilization of any and all rights derived under this lease by the mineral lessee, its agents, successors or assigns, shall not interfere with nor hinder the reasonable surface use by the Department of Natural Resources, its Offices or Commissions, as herein above reserved.

Applicant: WAINWRIGHT & BOYER LAND SERVICES, LLC

Bidder	Cash Payment	Price/Acre	Rental	Oil	Gas	Other

Legend
10110009
Blocks

CAMERON PARISH

GULF OF MEXICO

WC0003

P.O.B.

WC0028



WC0004

WEST CAMERON AREA, REVISED

WC0027