

**TRACT 41695 - Portion of Blocks 29, and 30, West Cameron Area, Revised, Cameron Parish, Louisiana**

The beds and bottoms of all water bodies belonging to the State of Louisiana located in Blocks 29, and 30, West Cameron Area, Revised, together with any present lands formed by accretion to the shoreline or islands formed therein, located in Cameron Parish, Louisiana, owned by and not presently under mineral lease as of November 10, 2010, from the State of Louisiana, the geographical area of which is more fully described as follows: Beginning at a point on the East line of Block 30, West Cameron Area, Revised, having Coordinates of X = 1,435,725.86 and Y = 387,920.00; thence West 10,979.86 feet to a point on the East line of State Lease No. 20272 having Coordinates of X = 1,424,746.00 and Y = 387,920.00; thence along the boundary of said State Lease No. 20272 the following courses: North 2,235.00 feet to a point having Coordinates of X = 1,424,746.00 and Y = 390,155.00 and West 3,778.19 feet to a point on the East line of State Lease No. 20271 having Coordinates of X = 1,420,967.81 and Y = 390,155.00; thence along the boundary of said State Lease No. 20271 the following courses: North 772.00 feet to a point having Coordinates of X = 1,420,967.81 and Y = 390,927.00 and West 1,202.81 feet to the Southeast corner of State Lease No. 20286 having Coordinates of X = 1,419,765.00 and Y = 390,927.00; thence North 2,863.24 feet along the East line of said State Lease No. 20286 to its Northeast corner, said corner also being a point on the North line of Block 29, West Cameron Area, Revised, having Coordinates of X = 1,419,765.00 and Y = 393,790.24; thence East 1,202.81 feet along the North line of said Block 29 to its Northeast corner, said corner also being the Northwest corner of said Block 30, having Coordinates of X = 1,420,967.81 and Y = 393,790.24; thence along the boundary of said Block 30 the following courses: East 14,758.05 feet to a point having Coordinates of X = 1,435,725.86 and Y = 393,790.24 and South 5,870.24 feet to the Point of Beginning, containing **1,874.03 acres**, all as more particularly outlined on a plat on file in the Office of Mineral Resources, Department of Natural Resources. All bearings, distances and coordinates are based on Louisiana Coordinate System of 1927, (North or South Zone).

NOTE: The above description of the Tract nominated for lease has been provided and corrected, where required, exclusively by the nomination party. Any mineral lease selected from this Tract and awarded by the Louisiana State Mineral and Energy Board shall be without warranty of any kind, either express, implied, or statutory, including, but not limited to, the implied warranties of merchantability and fitness for a particular purpose. Should the mineral lease awarded by the Louisiana State Mineral and Energy Board be subsequently modified, cancelled or abrogated due to the existence of conflicting leases, operating agreements, private claims or other future obligations or conditions which may affect all or any portion of the leased Tract, it shall not relieve the Lessee of the obligation to pay any bonus due thereon to the Louisiana State Mineral and Energy Board, nor shall the Louisiana State Mineral and Energy Board be obligated to refund any consideration paid by the Lessor prior to such

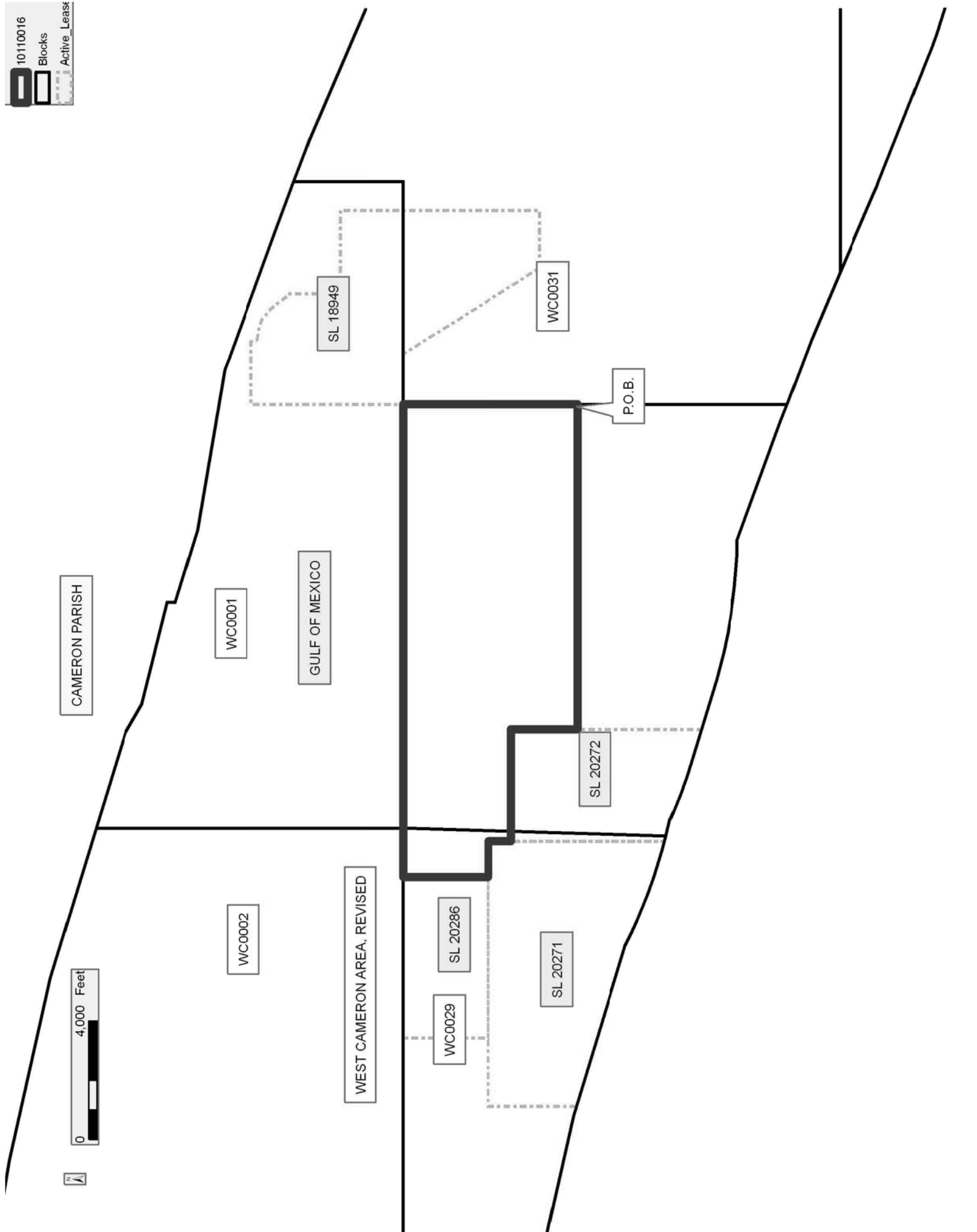
modification, cancellation, or abrogation, including, but not limited to, bonuses, rentals and royalties.

NOTE: The State of Louisiana does hereby reserve, and this lease shall be subject to, the imprescriptible right of surface use in the nature of a servitude in favor of the Department of Natural Resources, including its Offices and Commissions, for the sole purpose of implementing, constructing, servicing and maintaining approved coastal zone management and/or restoration projects. Utilization of any and all rights derived under this lease by the mineral lessee, its agents, successors or assigns, shall not interfere with nor hinder the reasonable surface use by the Department of Natural Resources, its Offices or Commissions, as herein above reserved.

Applicant: WAINWRIGHT & BOYER LAND SERVICES, LLC

Bidder	Cash Payment	Price/Acre	Rental	Oil	Gas	Other

10110016  
Blocks  
Active\_Lease



**TRACT 41696 - Portion of Blocks 28, and 29, West Cameron Area, Revised, Cameron Parish, Louisiana**

The beds and bottoms of all water bodies belonging to the State of Louisiana located in Blocks 28, and 29, West Cameron Area, Revised, together with any present lands formed by accretion to the shoreline or islands formed therein, located in Cameron Parish, Louisiana, owned by and not presently under mineral lease as of November 10, 2010, from the State of Louisiana, the geographical area of which is more fully described as follows: Beginning at a point on the North line of Block 28, West Cameron Area, Revised, having Coordinates of X = 1,401,700.00 and Y = 393,790.24; thence East 4,509.76 feet along the North line of said Block 28 to its Northeast corner, said corner also being the Northwest corner of Block 29, West Cameron Area, Revised, having Coordinates of X = 1,406,209.76 and Y = 393,790.24; thence East 8,128.24 feet along the North line of said Block 29 to the Northwest corner of said State Lease No. 20286 having Coordinates of X = 1,414,338.00 and Y = 393,790.24; thence South 2,863.24 feet along the West line of said State Lease No. 20286 to its Southwest corner, said corner also being a point on the North line of State Lease No. 20271, having Coordinates of X = 1,414,338.00 and Y = 390,927.00; thence along the boundary of said State Lease No. 20271 the following courses: West 2,312.00 feet to a point having Coordinates of X = 1,412,026.00 and Y = 390,927.00 and South 2,974.15 feet to its Southwest corner, said corner also being a point on the Three Mile Decree line derived from the June 16, 1975 Decree in the United States vs. Louisiana No. 9 Original, having Coordinates of X = 1,412,026.00 and Y = 387,952.85; thence along the Three Mile Decree line the following courses: Northwesterly on a straight line to a point having Coordinates of X = 1,411,695 and Y = 388,054; Northwesterly on a straight line to a point having Coordinates of X = 1,406,675 and Y = 389,181; Northwesterly on a straight line to a point on the common boundary line of said Block 29 and said Block 28 having Coordinates of X = 1,406,209.76 and Y = 389,258.53; Northwesterly on a straight line to a point having Coordinates of X = 1,401,700.00 and Y = 390,010.04; thence North 3,780.20 feet Point of Beginning, containing **1,271.15 acres, LESS AND EXCEPT** that portion thereof, if any, lying seaward of the line three nautical miles from the coast line of Louisiana, as said three mile line has been decreed by the Supreme Court of the United States, as determined by a Special Master appointed therein, in litigation styled **United States v. State of Louisiana et al No. 9 Original**, in 1975, all as more particularly outlined on a plat in the Office of Mineral Resources, Department of Natural Resources. All bearings, distances and coordinates are based on the Louisiana Coordinate System of 1927, (South Zone).

NOTE: The above description of the Tract nominated for lease has been provided and corrected, where required, exclusively by the nomination party. Any mineral lease selected from this Tract and awarded by the Louisiana State Mineral and Energy Board shall be without warranty of any kind, either express, implied, or statutory, including, but not limited to, the implied warranties of merchantability and fitness for a particular

purpose. Should the mineral lease awarded by the Louisiana State Mineral and Energy Board be subsequently modified, cancelled or abrogated due to the existence of conflicting leases, operating agreements, private claims or other future obligations or conditions which may affect all or any portion of the leased Tract, it shall not relieve the Lessee of the obligation to pay any bonus due thereon to the Louisiana State Mineral and Energy Board, nor shall the Louisiana State Mineral and Energy Board be obligated to refund any consideration paid by the Lessor prior to such modification, cancellation, or abrogation, including, but not limited to, bonuses, rentals and royalties.

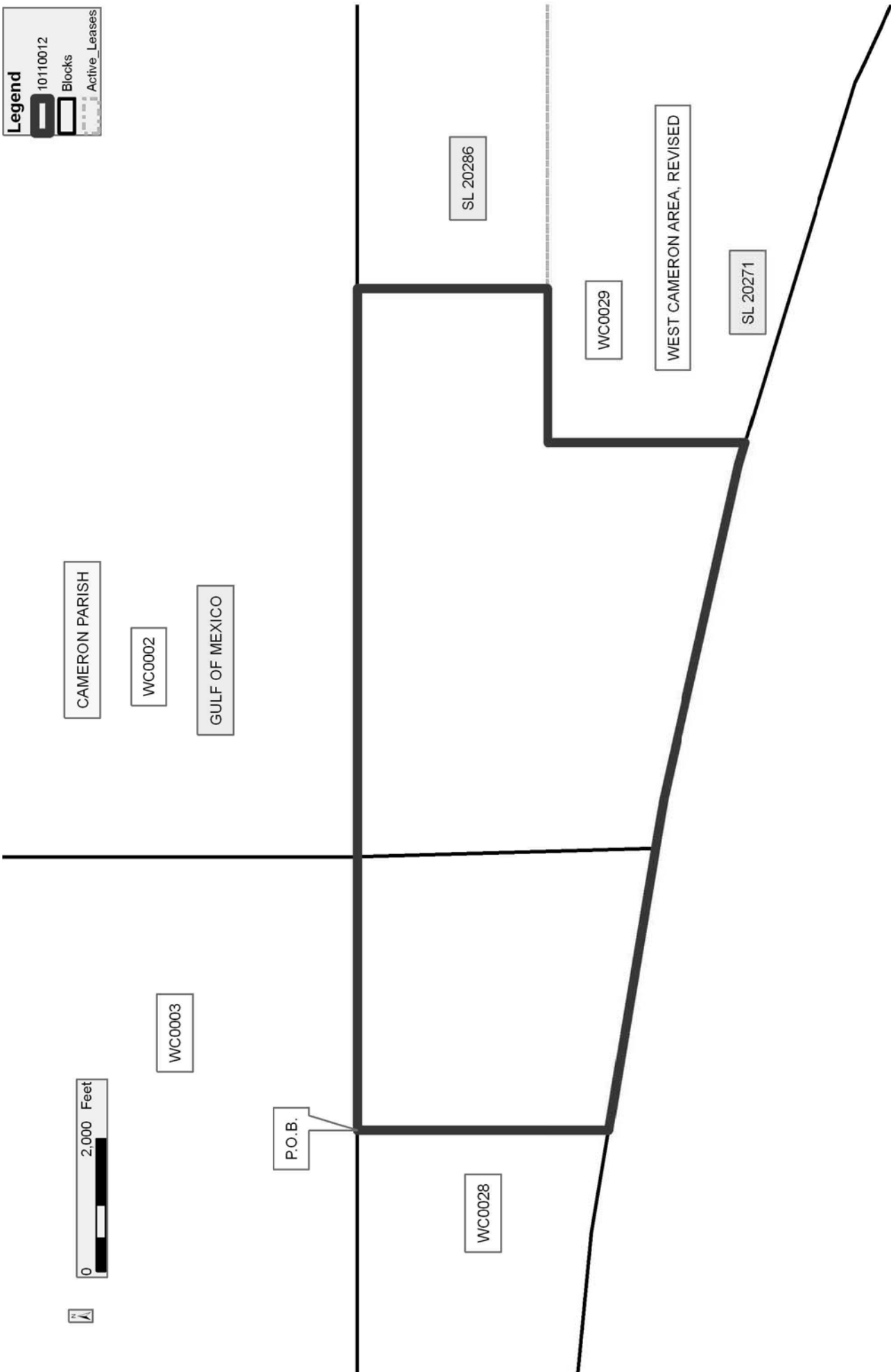
NOTE: The State of Louisiana does hereby reserve, and this lease shall be subject to, the imprescriptible right of surface use in the nature of a servitude in favor of the Department of Natural Resources, including its Offices and Commissions, for the sole purpose of implementing, constructing, servicing and maintaining approved coastal zone management and/or restoration projects. Utilization of any and all rights derived under this lease by the mineral lessee, its agents, successors or assigns, shall not interfere with nor hinder the reasonable surface use by the Department of Natural Resources, its Offices or Commissions, as herein above reserved.

Applicant: WAINWRIGHT & BOYER LAND SERVICES, LLC

Bidder	Cash Payment	Price/Acre	Rental	Oil	Gas	Other

**Legend**

- 10110012
- Blocks
- Active Leases



**TRACT 41697 - Portion of Block 30, West Cameron Area, Revised, Cameron Parish, Louisiana**

The beds and bottoms of all water bodies belonging to the State of Louisiana located in Block 30, West Cameron Area, Revised, together with any present lands formed by accretion to the shoreline or islands formed therein, located in Cameron Parish, Louisiana, owned by and not presently under mineral lease as of November 10, 2010, from the State of Louisiana, the geographical area of which is more fully described as follows: Beginning at a point on the East line of Block 30, West Cameron Area, Revised, having Coordinates of X = 1,435,725.86 and Y = 387,920.00; thence South 7,092.74 feet along the East line of said Block 30 to a point on the Three Mile Decree line derived from the June 16, 1975 Decree in the United States vs. Louisiana No. 9 Original having Coordinates of X = 1,435,725.86 and Y = 380,827.26; thence along the boundary of said Three Mile Decree the following courses: Northwesterly on a straight line to a point having Coordinates of X = 1,435,142.00 and Y = 381,048.00; Northwesterly on a straight line to a point having Coordinates of X = 1,431,147.00 and Y = 382,502.00; along an arc with a radius of 18,240.60 feet and a center of X = 1,431,465.00 and Y = 400,740.00 to a point having Coordinates of X = 1,426,148.00 and Y = 383,291.00; Northwesterly on a straight line to the Southeast corner of State Lease No. 20272 having Coordinates of X = 1,424,746.00 and Y = 383,718.19; thence North 4,201.81 feet along the East line of said State Lease No. 20272 to a point having Coordinates of X = 1,424,746.00 and Y = 387,920.00; thence East 10,979.86 feet to the Point of Beginning, containing **1,389.45 acres, LESS AND EXCEPT** that portion thereof, if any, lying seaward of the line three nautical miles from the coast line of Louisiana, as said three mile line has been decreed by the Supreme Court of the United States, as determined by a Special Master appointed therein, in litigation styled **United States v. State of Louisiana et al No. 9 Original**, in 1975, all as more particularly outlined on a plat in the Office of Mineral Resources, Department of Natural Resources. All bearings, distances and coordinates are based on the Louisiana Coordinate System of 1927, (South Zone).

NOTE: The above description of the Tract nominated for lease has been provided and corrected, where required, exclusively by the nomination party. Any mineral lease selected from this Tract and awarded by the Louisiana State Mineral and Energy Board shall be without warranty of any kind, either express, implied, or statutory, including, but not limited to, the implied warranties of merchantability and fitness for a particular purpose. Should the mineral lease awarded by the Louisiana State Mineral and Energy Board be subsequently modified, cancelled or abrogated due to the existence of conflicting leases, operating agreements, private claims or other future obligations or conditions which may affect all or any portion of the leased Tract, it shall not relieve the Lessee of the obligation to pay any bonus due thereon to the Louisiana State Mineral and Energy Board, nor shall the Louisiana State Mineral and Energy Board be obligated to refund any consideration paid by the Lessor prior to such

modification, cancellation, or abrogation, including, but not limited to, bonuses, rentals and royalties.

NOTE: The State of Louisiana does hereby reserve, and this lease shall be subject to, the imprescriptible right of surface use in the nature of a servitude in favor of the Department of Natural Resources, including its Offices and Commissions, for the sole purpose of implementing, constructing, servicing and maintaining approved coastal zone management and/or restoration projects. Utilization of any and all rights derived under this lease by the mineral lessee, its agents, successors or assigns, shall not interfere with nor hinder the reasonable surface use by the Department of Natural Resources, its Offices or Commissions, as herein above reserved.

Applicant: WAINWRIGHT & BOYER LAND SERVICES, LLC

Bidder	Cash Payment	Price/Acre	Rental	Oil	Gas	Other



**Legend**

- 10110017
- Blocks
- Active Leases

