

SPECIAL NOTICE

On Tuesday October 5, 2010 the Office of Mineral Resources on behalf of the State Mineral and Energy Board advertised in "The Notice of Publication", for receipt of sealed bids on or before **12:00 noon on Tuesday, November 9, 2010** for State Leases to be awarded upon **Tract Nos. 41685 through 41723, inclusive**, at its **November 10, 2010** Lease Sale. Within the said advertisement **Tract No. 41704**, was erroneously described as an Inland Tract. By virtue of this public notice, **Tract No. 41704, Sabine Parish** is hereby corrected to be a State Agency Tract and described as follows:

TRACT 41704 - - Sabine Parish, Louisiana

All of the mineral rights only reserved by the Sabine Parish School Board under land expropriated by the State of Louisiana, by virtue of a judgment rendered on July 6, 1966, by United States District Court, Western District of Louisiana, Shreveport Division, in Civil Action No. 11,882 entitled State of Louisiana, through The Sabine River Authority, State of Louisiana vs. Sabine Parish School Board, which is not under valid mineral lease from the Sabine Parish School Board, on November 10, 2010, more particularly described as follows: All lands, excluding the beds and bottoms of all navigable water bodies located East of the boundary line between the States of Texas and Louisiana as determined by the report of the Special master and adjudicated by the Supreme Court of the United States in litigation styled **Texas v. Louisiana, et al No. 36 Original**, or as otherwise approved by said court, and West of low mean water mark of the Sabine River, comprising all or a portion of State Lease 20373, within the following: All or a portion of Section 16, Township 08 North, Range 14 West in Sabine Parish, Louisiana, The North half (N/2) of fractional Section 16, Township 8 North, Range 14 West in Sabine Parish, Louisiana, containing approximately **193 acres**, all as more particularly outlined on a plat on file in the Office of Mineral Resources, Department of Natural Resources. All bearings, distances and coordinates are based on Louisiana Coordinate System of 1927, (North or South Zone).

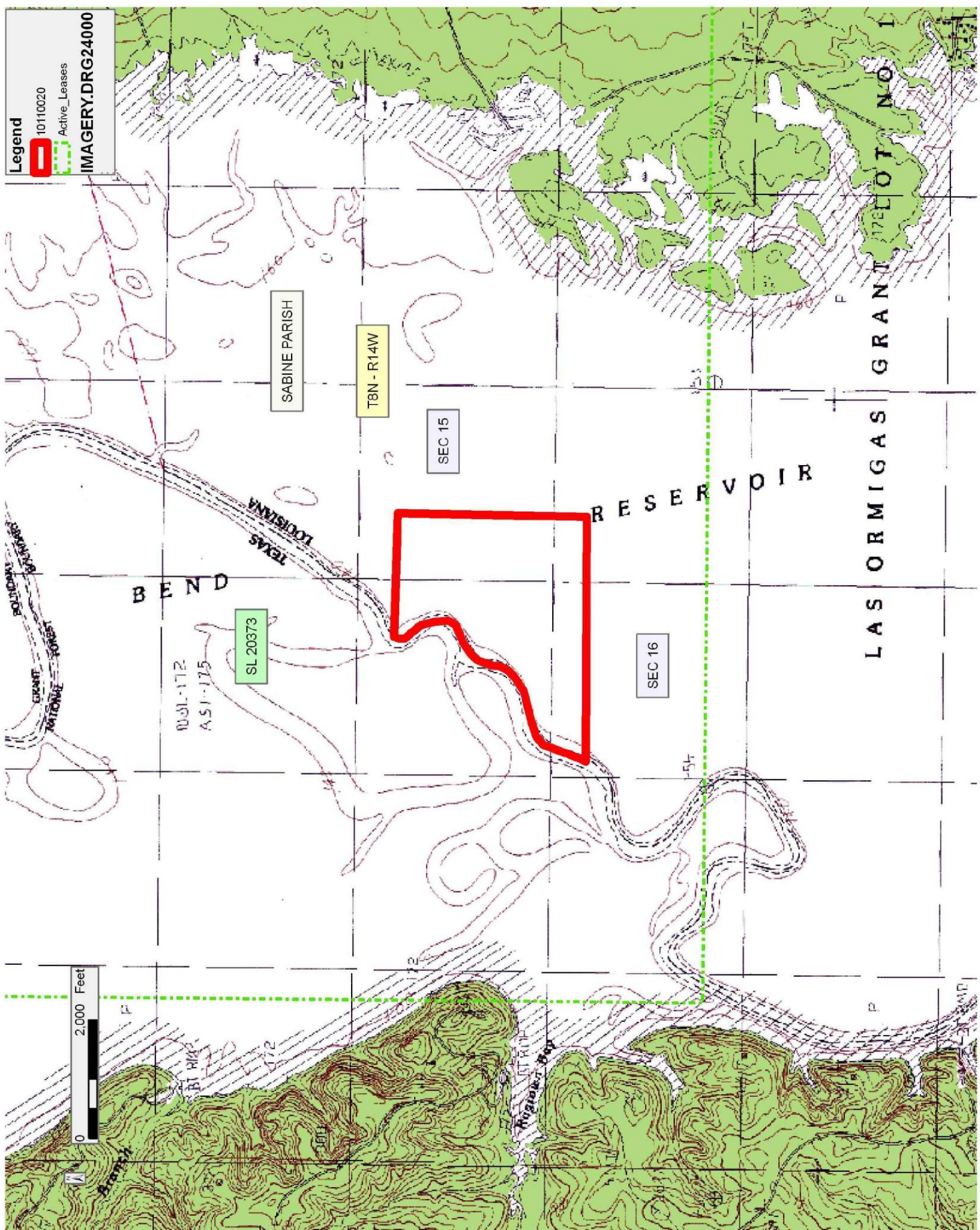
NOTE: The above description of the Tract nominated for lease has been provided and corrected, where required, exclusively by the nomination party. Any mineral lease selected from this Tract and awarded by the Louisiana State Mineral and Energy Board shall be without warranty of any kind, either express, implied, or statutory, including, but not limited to, the implied warranties of merchantability and fitness for a particular purpose. Should

the mineral lease awarded by the Louisiana State Mineral and Energy Board be subsequently modified, cancelled or abrogated due to the existence of conflicting leases, operating agreements, private claims or other future obligations or conditions which may affect all or any portion of the leased Tract, it shall not relieve the Lessee of the obligation to pay any bonus due thereon to the Louisiana State Mineral and Energy Board, nor shall the Louisiana State Mineral and Energy Board be obligated to refund any consideration paid by the Lessor prior to such modification, cancellation, or abrogation, including, but not limited to, bonuses, rentals and royalties.

The Sabine Parish School Board requests a minimum bonus of \$4,000.00 per acre and a minimum royalty of 25%

Applicant: SANDOZ & ASSOCIATES, INC.

Bidder	Cash Payment	Price/Acre	Rental	Oil	Gas	Other



Legend

10110020

Active_Leases

IMAGERY.DRG24000

0 2,000 Feet

SABINE PARISH

T8N - R14W

SEC 15

SEC 16

SL 20373

10-31-172
A.S. 1-175

BEND

RESERVOIR

GRANT PLOT NO. 1
LAS ORMIGAS

GRANT PLOT NO. 1
SABINE RIVER
BEND

GRANT PLOT NO. 1
SABINE RIVER
BEND