

TRACT 41724 - Cameron Parish, Louisiana

All lands, including lands added by accretion and reliction and lands now or formerly constituting the beds and bottoms of all water bodies of every nature and description, owned by and not presently under mineral lease as of December 8, 2010 from the State of Louisiana, situated in Cameron Parish, Louisiana, and being more fully described as follows: Beginning at the Southeast corner of State Lease No. 18690, said point located on the South line of Block 13, West Cameron Area, Revised, having Coordinates of X = 1,247,871.23 and Y = 393,790.24; thence North 2,500.00 feet along the East boundary of said State Lease No. 18690 to its Northeast corner having Coordinates of X = 1,247,871.23 and Y = 396,290.24; thence North 2,918.94 feet to a point on the Louisiana Coastline, as decreed by the Supreme Court of the United States, as determined by a Special Master appointed therein, in litigation styled *United States v. State of Louisiana et al No. 9 Original*, in 1975, having Coordinates of X = 1,247,871.23 and Y = 399,209.18; thence along the said Louisiana Coastline the following: Northeasterly along a straight line to a point having Coordinates of X = 1,248,971 and Y = 399,421; Northeasterly along a straight line to a point having Coordinates of X = 1,254,211 and Y = 400,226 and Northeasterly along a straight line to a point on the East line of said Block 13 having Coordinates of X = 1,258,629.28 and Y = 400,836.80; thence South 7,046.56 feet along the East line of said Block 13 to its Southeast corner having Coordinates of X = 1,258,629.28 and Y = 393,790.24; thence West 10,758.05 feet along the South line of said Block 13 to the point of beginning, containing approximately **1,549.01 acres**, all as more particularly outlined on a plat on file in the Office of Mineral Resources, Department of Natural Resources. All bearings, distances and coordinates are based on Louisiana Coordinate System of 1927, (North or South Zone), where applicable.

NOTE: The above description of the Tract nominated for lease has been provided and corrected, where required, exclusively by the nomination party. Any mineral lease selected from this Tract and awarded by the Louisiana State Mineral and Energy Board shall be without warranty of any kind, either express, implied, or statutory, including, but not limited to, the implied warranties of merchantability and fitness for a particular purpose. Should the mineral lease awarded by the Louisiana State Mineral and Energy Board be subsequently modified, cancelled or abrogated due to the existence of conflicting leases, operating agreements, private claims or other future obligations or conditions which may affect all or any portion of the leased Tract, it shall not relieve the Lessee of the obligation to pay any bonus due thereon to the Louisiana State Mineral and Energy Board, nor shall the Louisiana State Mineral and Energy Board be obligated to refund any consideration paid by the Lessor prior to such modification, cancellation, or abrogation, including, but not limited to, bonuses, rentals and royalties.

NOTE: The State of Louisiana does hereby reserve, and this lease shall be subject to, the imprescriptible right of surface use in the nature of a

servitude in favor of the Department of Natural Resources, including its Offices and Commissions, for the sole purpose of implementing, constructing, servicing and maintaining approved coastal zone management and/or restoration projects. Utilization of any and all rights derived under this lease by the mineral lessee, its agents, successors or assigns, shall not interfere with nor hinder the reasonable surface use by the Department of Natural Resources, its Offices or Commissions, as herein above reserved.

Applicant: THEOPHILUS OIL, GAS & LAND SERVICES, LLC

Bidder	Cash Payment	Price/Acre	Rental	Oil	Gas	Other

Legend

10120047

Blocks

Active_Leases

IMAGERY.DOQQ_2008_1M_CIR

0 2,000 Feet



CAMERON PARISH

T15S - R14W

WC0013

SL 18690

P.O.B.

SL 4418

GULF OF MEXICO

WC0018

WEST CAMERON AREA, REVISED

WC0012

WC0019

TRACT 41725 - Cameron Parish, Louisiana

All lands, including lands added by accretion and reliction and lands now or formerly constituting the beds and bottoms of all water bodies of every nature and description, owned by and not presently under mineral lease as of December 8, 2010 from the State of Louisiana, situated in Cameron Parish, Louisiana, and being more fully described as follows: Beginning at the Northeast corner of State Lease No. 18690, said corner lying within Block 13, West Cameron Area, Revised, having Coordinates of X = 1,247,871.23 and Y = 396,290.24; thence along the boundary of said State Lease No. 18690 the following courses: West 4,000.00 feet to its Northwest corner having Coordinates of X = 1,243,871.23 and Y = 396,290.24 and South 1,378.03 feet to the Easternmost Northeast corner of State Lease No. 19534, said corner lying on the East line of Block 14, West Cameron Area, Revised, having Coordinates of X = 1,243,871.23 and Y = 394,912.21; thence along the boundary of said State Lease No. 19534 the following courses: West 1,799.71 feet to a corner having Coordinates of X = 1,242,071.52 and Y = 394,912.21; North 2,004.23 feet to a corner having Coordinates of X = 1,242,071.52 and Y = 396,916.44 and North 39 degrees 34 minutes 36 seconds West 1,394.85 feet to a point on the Louisiana Coastline, as decreed by the Supreme Court of the United States, as determined by a Special Master appointed therein, in litigation styled *United States v. State of Louisiana et al No. 9 Original*, in 1975, having Coordinates of X = 1,241,182.85 and Y = 397,991.55; thence along the said Louisiana Coastline the following: Northeasterly along a straight line to a point having Coordinates of X = 1,243,670 and Y = 398,400; Northeasterly along a straight line to a point on the East line of said Block 14 also being the West line of said Block 13 having Coordinates of X = 1,243,871.23 and Y = 398,438.76 and Northeasterly along a straight line to a point having Coordinates of X = 1,247,871.23 and Y = 399,209.18; thence South 2,918.94 feet to the point of beginning, containing approximately **384.49 acres**, all as more particularly outlined on a plat on file in the Office of Mineral Resources, Department of Natural Resources. All bearings, distances and coordinates are based on Louisiana Coordinate System of 1927, (North or South Zone), where applicable.

NOTE: The above description of the Tract nominated for lease has been provided and corrected, where required, exclusively by the nomination party. Any mineral lease selected from this Tract and awarded by the Louisiana State Mineral and Energy Board shall be without warranty of any kind, either express, implied, or statutory, including, but not limited to, the implied warranties of merchantability and fitness for a particular purpose. Should the mineral lease awarded by the Louisiana State Mineral and Energy Board be subsequently modified, cancelled or abrogated due to the existence of conflicting leases, operating agreements, private claims or other future obligations or conditions which may affect all or any portion of the leased Tract, it shall not relieve the Lessee of the obligation to pay any bonus due thereon to the Louisiana State Mineral and Energy Board, nor shall the Louisiana State Mineral and Energy Board be obligated to refund any consideration paid by the Lessor prior to such

modification, cancellation, or abrogation, including, but not limited to, bonuses, rentals and royalties.

NOTE: The State of Louisiana does hereby reserve, and this lease shall be subject to, the imprescriptible right of surface use in the nature of a servitude in favor of the Department of Natural Resources, including its Offices and Commissions, for the sole purpose of implementing, constructing, servicing and maintaining approved coastal zone management and/or restoration projects. Utilization of any and all rights derived under this lease by the mineral lessee, its agents, successors or assigns, shall not interfere with nor hinder the reasonable surface use by the Department of Natural Resources, its Offices or Commissions, as herein above reserved.

Applicant: THEOPHILUS OIL, GAS & LAND SERVICES, LLC

Bidder	Cash Payment	Price/Acre	Rental	Oil	Gas	Other

Legend

10120046

Blocks

Active_Leases

IMAGERY.DOQQ_2008_1M_CIR

0 2,000 Feet

CAMERON PARISH

T15S - R14W

WC0013

P.O.B.

SL 18690

GULF OF MEXICO

WC0018

SL 19534

WEST CAMERON AREA, REVISED

WC0017

WC0014

TRACT 41726 - Portion of Block 18, West Cameron Area, Revised, Cameron Parish, Louisiana

The beds and bottoms of all water bodies belonging to the State of Louisiana located in Block 18, West Cameron Area, Revised, together with any present lands formed by accretion to the shoreline or islands formed therein, located in Cameron Parish, Louisiana, owned by and not presently under mineral lease as of December 8, 2010, from the State of Louisiana, the geographical area of which is more fully described as follows: Beginning at the Northernmost Northeast corner of State Lease No. 4418, as amended, said point located on the North line of Block 18, West Cameron Area, Revised, having Coordinates of X = 1,253,095.00 and Y = 393,790.24; thence East 5,534.28 feet along the North line of said Block 18 to its Northeast corner having Coordinates of X = 1,258,629.28 and Y = 393,790.24; thence South 4,422.60 feet along the East line of said Block 18 to the Easternmost Northeast corner of said State Lease No. 4418 having Coordinates of X = 1,258,629.28 and Y = 389,367.64; thence along the boundary of said State Lease No. 4418 the following courses: South 65 degrees 31 minutes 16 seconds West 6,080.86 feet to a corner having Coordinates of X = 1,253,095.00 and Y = 386,848.00 and North 6,942.24 feet to the point of beginning, containing approximately **721.95 acres**, all as more particularly outlined on a plat on file in the Office of Mineral Resources, Department of Natural Resources. All bearings, distances and coordinates are based on Louisiana Coordinate System of 1927, (North or South Zone).

NOTE: The above description of the Tract nominated for lease has been provided and corrected, where required, exclusively by the nomination party. Any mineral lease selected from this Tract and awarded by the Louisiana State Mineral and Energy Board shall be without warranty of any kind, either express, implied, or statutory, including, but not limited to, the implied warranties of merchantability and fitness for a particular purpose. Should the mineral lease awarded by the Louisiana State Mineral and Energy Board be subsequently modified, cancelled or abrogated due to the existence of conflicting leases, operating agreements, private claims or other future obligations or conditions which may affect all or any portion of the leased Tract, it shall not relieve the Lessee of the obligation to pay any bonus due thereon to the Louisiana State Mineral and Energy Board, nor shall the Louisiana State Mineral and Energy Board be obligated to refund any consideration paid by the Lessor prior to such modification, cancellation, or abrogation, including, but not limited to, bonuses, rentals and royalties.

NOTE: The State of Louisiana does hereby reserve, and this lease shall be subject to, the imprescriptible right of surface use in the nature of a servitude in favor of the Department of Natural Resources, including its Offices and Commissions, for the sole purpose of implementing, constructing, servicing and maintaining approved coastal zone management and/or restoration projects. Utilization of any and all rights derived under this lease by the mineral lessee, its agents, successors or assigns,

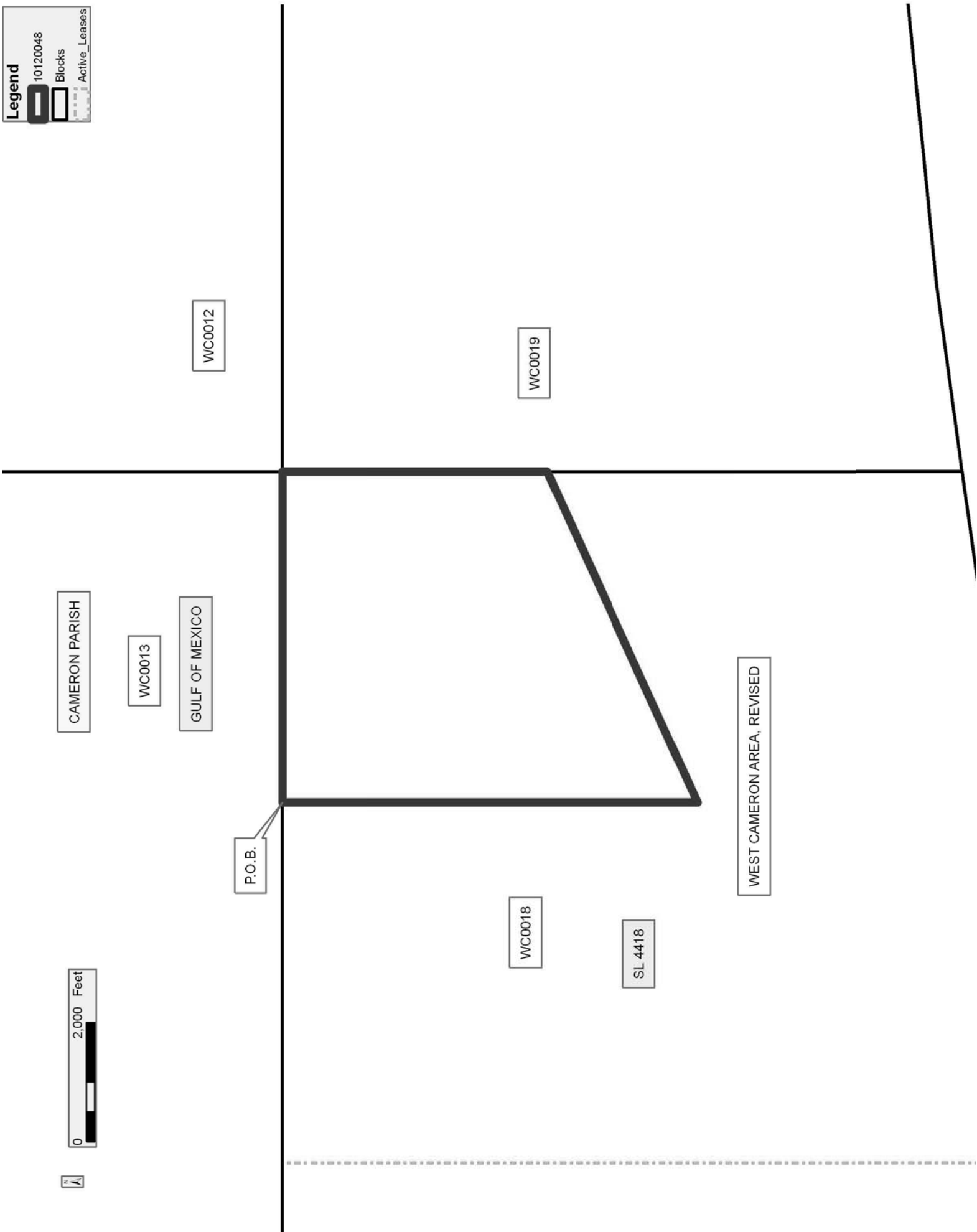
shall not interfere with nor hinder the reasonable surface use by the Department of Natural Resources, its Offices or Commissions, as herein above reserved.

Applicant: THEOPHILUS OIL, GAS & LAND SERVICES, LLC

Bidder	Cash Payment	Price/Acre	Rental	Oil	Gas	Other

Legend

- 10120048
- Blocks
- Active Leases



TRACT 41727 - Portion of Block 13, South Timbalier Area, Revised, Terrebonne Parish, Louisiana

The beds and bottoms of all water bodies belonging to the State of Louisiana located in Block 13, South Timbalier Area, Revised, together with any present lands formed by accretion to the shoreline or islands formed therein, located in Terrebonne Parish, Louisiana, owned by and not presently under mineral lease as of December 8, 2010, from the State of Louisiana, the geographical area of which is more fully described as follows: Beginning at the Southwest corner of State Lease No. 17729, also being a point on the South line of Block 13, South Timbalier Area, Revised, having Coordinates of X = 2,285,950.00 and Y = 134,330.00; thence West 3,500.00 feet along the South line of said Block 13 to a point having Coordinates of X = 2,282,450.00 and Y = 134,330.00; thence North 6,917.60 feet to a point on the Louisiana Coastline, as decreed by the Supreme Court of the United States, as determined by a Special Master appointed therein, in litigation styled *United States v. State of Louisiana et al No. 9 Original*, in 1975, having Coordinates of X = 2,282,450.00 and Y = 141,247.60; thence Southeasterly, on a straight line, along the said Louisiana Coastline to the Northwest corner of said State Lease No. 17729 having Coordinates of X = 2,285,950.00 and Y = 140,584.62; thence South 6,254.62 feet along the West boundary of said State Lease No. 17729 to the point of beginning, containing approximately **529.19 acres**, all as more particularly outlined on a plat on file in the Office of Mineral Resources, Department of Natural Resources. All bearings, distances and coordinates are based on Louisiana Coordinate System of 1927, (North or South Zone).

NOTE: The above description of the Tract nominated for lease has been provided and corrected, where required, exclusively by the nomination party. Any mineral lease selected from this Tract and awarded by the Louisiana State Mineral and Energy Board shall be without warranty of any kind, either express, implied, or statutory, including, but not limited to, the implied warranties of merchantability and fitness for a particular purpose. Should the mineral lease awarded by the Louisiana State Mineral and Energy Board be subsequently modified, cancelled or abrogated due to the existence of conflicting leases, operating agreements, private claims or other future obligations or conditions which may affect all or any portion of the leased Tract, it shall not relieve the Lessee of the obligation to pay any bonus due thereon to the Louisiana State Mineral and Energy Board, nor shall the Louisiana State Mineral and Energy Board be obligated to refund any consideration paid by the Lessor prior to such modification, cancellation, or abrogation, including, but not limited to, bonuses, rentals and royalties.

NOTE: The State of Louisiana does hereby reserve, and this lease shall be subject to, the imprescriptible right of surface use in the nature of a servitude in favor of the Department of Natural Resources, including its Offices and Commissions, for the sole purpose of implementing, constructing, servicing and maintaining approved coastal zone management

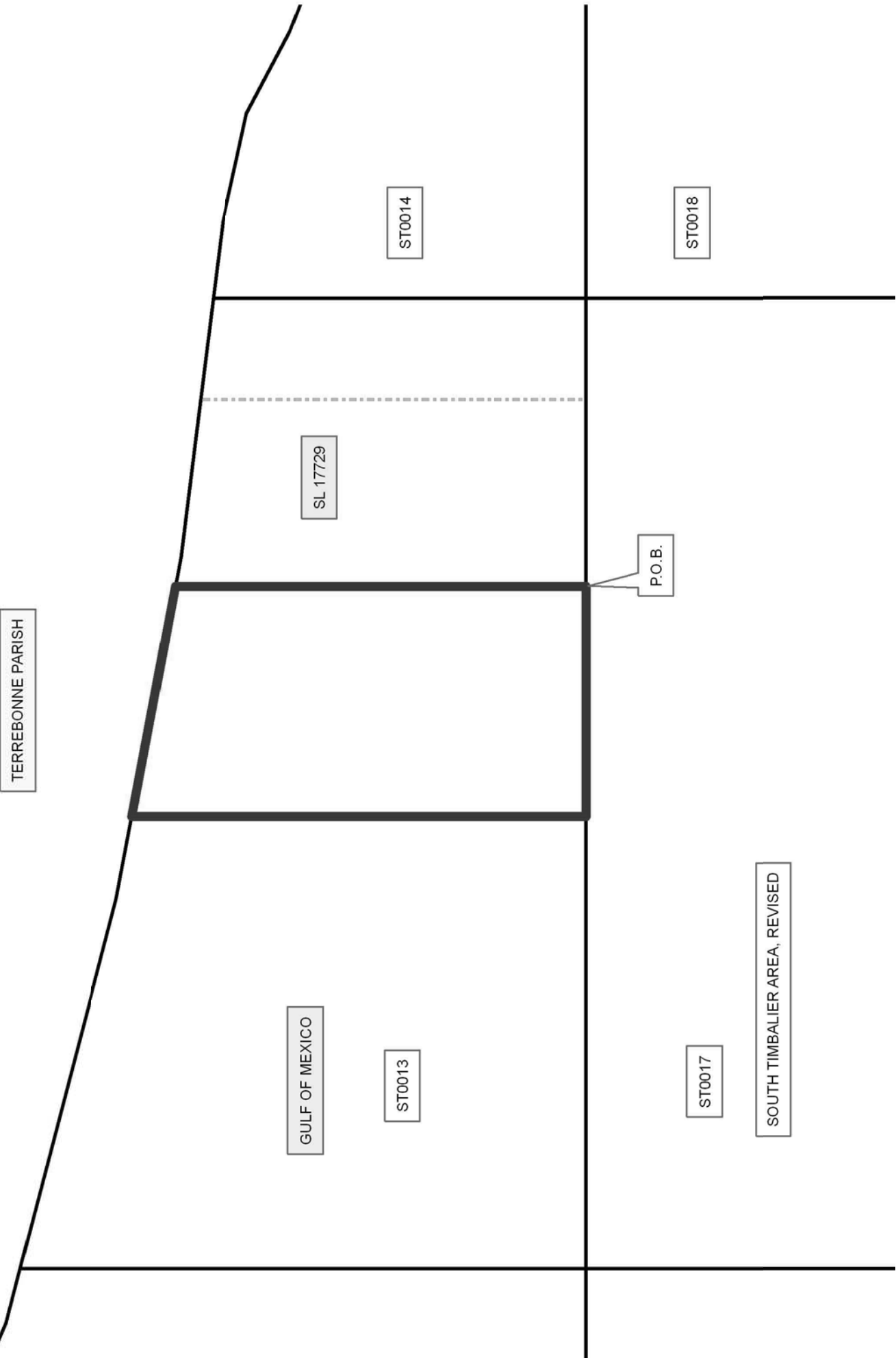
and/or restoration projects. Utilization of any and all rights derived under this lease by the mineral lessee, its agents, successors or assigns, shall not interfere with nor hinder the reasonable surface use by the Department of Natural Resources, its Offices or Commissions, as herein above reserved.

Applicant: LAND MANAGEMENT SERVICES, L.L.C.

Bidder	Cash Payment	Price/Acre	Rental	Oil	Gas	Other

Legend

- 10120037
- Blocks
- Active_Leases



TRACT 41728 - Portion of Blocks 13, 14, 17, and 18, South Timbalier Area, Revised, Terrebonne Parish, Louisiana

The beds and bottoms of all water bodies belonging to the State of Louisiana located in Blocks 13, 14, 17, and 18, South Timbalier Area, Revised, together with any present lands formed by accretion to the shoreline or islands formed therein, located in Terrebonne Parish, Louisiana, owned by and not presently under mineral lease as of December 8, 2010, from the State of Louisiana, the geographical area of which is more fully described as follows: Beginning at a point on the Louisiana Coastline, as decreed by the Supreme Court of the United States, as determined by a Special Master appointed therein, in litigation styled *United States v. State of Louisiana et al No. 9 Original*, in 1975, having Coordinates of X = 2,292,300.00 and Y = 139,685.13; thence South 5,355.13 feet to a point on the South line of Block 14, South Timbalier Area, Revised, also being a point on the North line of Block 18, South Timbalier Area, Revised, having Coordinates of X = 2,292,300.00 and Y = 134,330.00; thence South 3,500.00 feet to a point within said Block 18 having Coordinates of X = 2,292,300.00 and Y = 130,830.00; thence West 1,961.94 feet to a point on the West line of said Block 18, also being a point on the East line of Block 17, South Timbalier Area, Revised, having Coordinates of X = 2,290,338.06 and Y = 130,830.00; thence West 1,538.06 feet to a point within said Block 17 having Coordinates of X = 2,288,800.00 and Y = 130,830.00; thence North 3,500.00 feet to a point on the North line of said Block 17, also being a point the South line of Block 13, South Timbalier Area, Revised, and also being the Southeast corner of State Lease No. 17729 having Coordinates of X = 2,288,800.00 and Y = 134,330.00; thence North 5,869.07 feet along the East boundary of said State Lease No. 17729 to its Northeast corner, also being a point on the said Louisiana Coastline having Coordinates of X = 2,288,800.00 and Y = 140,199.07; thence along said Louisiana Coastline the following: Southeasterly on a straight line to a point having Coordinates of X = 2,290,338.06 and Y = 140,006.70; Southeasterly on a straight line to a point having Coordinates of X = 2,291,503 and Y = 139,861 and Southeasterly on a straight line to the point of beginning, containing approximately **734.51 acres**, all as more particularly outlined on a plat on file in the Office of Mineral Resources, Department of Natural Resources. All bearings, distances and coordinates are based on Louisiana Coordinate System of 1927, (North or South Zone).

NOTE: The above description of the Tract nominated for lease has been provided and corrected, where required, exclusively by the nomination party. Any mineral lease selected from this Tract and awarded by the Louisiana State Mineral and Energy Board shall be without warranty of any kind, either express, implied, or statutory, including, but not limited to, the implied warranties of merchantability and fitness for a particular purpose. Should the mineral lease awarded by the Louisiana State Mineral and Energy Board be subsequently modified, cancelled or abrogated due to the existence of conflicting leases, operating agreements, private claims or other future obligations or conditions which may affect all or any

portion of the leased Tract, it shall not relieve the Lessee of the obligation to pay any bonus due thereon to the Louisiana State Mineral and Energy Board, nor shall the Louisiana State Mineral and Energy Board be obligated to refund any consideration paid by the Lessor prior to such modification, cancellation, or abrogation, including, but not limited to, bonuses, rentals and royalties.

NOTE: The State of Louisiana does hereby reserve, and this lease shall be subject to, the imprescriptible right of surface use in the nature of a servitude in favor of the Department of Natural Resources, including its Offices and Commissions, for the sole purpose of implementing, constructing, servicing and maintaining approved coastal zone management and/or restoration projects. Utilization of any and all rights derived under this lease by the mineral lessee, its agents, successors or assigns, shall not interfere with nor hinder the reasonable surface use by the Department of Natural Resources, its Offices or Commissions, as herein above reserved.

Applicant: LAND MANAGEMENT SERVICES, L.L.C.

Bidder	Cash Payment	Price/Acre	Rental	Oil	Gas	Other

Legend

- 10120039
- Blocks
- Active Leases

TERREBONNE PARISH

LAFOURCHE PARISH

P.O.B.

ST0014

ST0018

SL 17729

SOUTH TIMBALIER AREA, REVISED

ST0017

ST0013

GULF OF MEXICO



TRACT 41729 - Portion of Block 17, South Timbalier Area, Revised, Terrebonne Parish, Louisiana

The beds and bottoms of all water bodies belonging to the State of Louisiana located in Block 17, South Timbalier Area, Revised, together with any present lands formed by accretion to the shoreline or islands formed therein, located in Terrebonne Parish, Louisiana, owned by and not presently under mineral lease as of December 8, 2010, from the State of Louisiana, the geographical area of which is more fully described as follows: Beginning at the Southeast corner of State Lease No. 17729, also being a point on the North line of Block 17, South Timbalier Area, Revised, having Coordinates of X = 2,288,800.00 and Y = 134,330.00; thence South 3,500.00 feet to a point within said Block 17 having Coordinates of X = 2,288,800.00 and Y = 130,830.00; thence West 6,350.00 feet to a point within said Block 17 having Coordinates of X = 2,282,450.00 and Y = 130,830.00; thence North 3,500.00 feet to a point on the North line of said Block 17 having Coordinates of X = 2,282,450.00 and Y = 134,330.00; thence East 3,500.00 feet along the North line of said Block 17 to the Southwest corner of said State Lease No. 17729 having Coordinates of X = 2,285,950.00 and Y = 134,330.00; thence East 2,850.00 feet along the South boundary of said State Lease No. 17729 to the point of beginning, containing approximately **510.22 acres**, all as more particularly outlined on a plat on file in the Office of Mineral Resources, Department of Natural Resources. All bearings, distances and coordinates are based on Louisiana Coordinate System of 1927, (North or South Zone).

NOTE: The above description of the Tract nominated for lease has been provided and corrected, where required, exclusively by the nomination party. Any mineral lease selected from this Tract and awarded by the Louisiana State Mineral and Energy Board shall be without warranty of any kind, either express, implied, or statutory, including, but not limited to, the implied warranties of merchantability and fitness for a particular purpose. Should the mineral lease awarded by the Louisiana State Mineral and Energy Board be subsequently modified, cancelled or abrogated due to the existence of conflicting leases, operating agreements, private claims or other future obligations or conditions which may affect all or any portion of the leased Tract, it shall not relieve the Lessee of the obligation to pay any bonus due thereon to the Louisiana State Mineral and Energy Board, nor shall the Louisiana State Mineral and Energy Board be obligated to refund any consideration paid by the Lessor prior to such modification, cancellation, or abrogation, including, but not limited to, bonuses, rentals and royalties.

NOTE: The State of Louisiana does hereby reserve, and this lease shall be subject to, the imprescriptible right of surface use in the nature of a servitude in favor of the Department of Natural Resources, including its Offices and Commissions, for the sole purpose of implementing, constructing, servicing and maintaining approved coastal zone management and/or restoration projects. Utilization of any and all rights derived under this lease by the mineral lessee, its agents, successors or assigns,

shall not interfere with nor hinder the reasonable surface use by the Department of Natural Resources, its Offices or Commissions, as herein above reserved.

Applicant: LAND MANAGEMENT SERVICES, L.L.C.

Bidder	Cash Payment	Price/Acre	Rental	Oil	Gas	Other

Legend

- 10120038
- Blocks
- Active_Leases

