

**TRACT 41730 - Caldwell Parish, Louisiana**

All of the lands now or formerly constituting the beds and bottoms of all water bodies of every nature and description as to which title is vested in the State of Louisiana, together with all islands arising therein and other lands formed by accretion or by reliction, where allowed by law, excepting tax adjudicated lands, and not presently under mineral lease on December 8, 2010, situated in Caldwell Parish, Louisiana, and more particularly described as follows: Beginning at a point having Coordinates of X = 2,137,794.00 and Y = 575,784.00; thence East 3,336.50 feet to the Southwest corner of State Lease No. 19560 having Coordinates of X = 2,141,130.50 and Y = 575,784.00; thence East 6,663.50 feet along the Southern boundary of said State Lease No. 19560 to its Southeast corner having Coordinates of X = 2,147,794.00 and Y = 575,784.00; thence East 602.00 feet to a point having Coordinates of X = 2,148,396.00 and Y = 575,784.00; thence South 5,772.00 feet to a point having Coordinates of X = 2,148,396.00 and Y = 570,012.00; thence West 10,602.00 feet to a point having Coordinates of X = 2,137,794.00 and Y = 570,012.00; thence North 5,772.00 feet to the point of beginning, containing approximately **37 acres**, all as more particularly outlined on a plat on file in the Office of Mineral Resources, Department of Natural Resources. All bearings, distances and coordinates are based on Louisiana Coordinate System of 1927, (North or South Zone), where applicable.

NOTE: The above description of the Tract nominated for lease has been provided and corrected, where required, exclusively by the nomination party. Any mineral lease selected from this Tract and awarded by the Louisiana State Mineral and Energy Board shall be without warranty of any kind, either express, implied, or statutory, including, but not limited to, the implied warranties of merchantability and fitness for a particular purpose. Should the mineral lease awarded by the Louisiana State Mineral and Energy Board be subsequently modified, cancelled or abrogated due to the existence of conflicting leases, operating agreements, private claims or other future obligations or conditions which may affect all or any portion of the leased Tract, it shall not relieve the Lessee of the obligation to pay any bonus due thereon to the Louisiana State Mineral and Energy Board, nor shall the Louisiana State Mineral and Energy Board be obligated to refund any consideration paid by the Lessor prior to such modification, cancellation, or abrogation, including, but not limited to, bonuses, rentals and royalties.

Bidder	Cash Payment	Price/Acre	Rental	Oil	Gas	Other

Applicant: GREEN LEAF RESOURCES

Legend

10120008

Active\_Leases

IMAGERY.DOQQ\_2004\_1M

CALDWELL PARISH

T15N - R4E

SL 19560

BAYOU LAFOURCHE

T14N - R4E

P.O.B.

0 2,000 Feet



**TRACT 41731 - Caldwell Parish, Louisiana**

All of the lands now or formerly constituting the beds and bottoms of all water bodies of every nature and description as to which title is vested in the State of Louisiana, together with all islands arising therein and other lands formed by accretion or by reliction, where allowed by law, excepting tax adjudicated lands, and not presently under mineral lease on December 8, 2010, situated in Caldwell Parish, Louisiana, and more particularly described as follows: Beginning at a point having Coordinates of X = 2,137,794.00 and Y = 570,012.00; thence East 10,602.00 feet to a point having Coordinates of X = 2,148,396.00 and Y = 570,012.00; thence South 07 degrees 03 minutes 39 seconds East 16,058.79 feet to a point having Coordinates of X = 2,150,370.00 and Y = 554,075.00; thence West 12,576.00 feet to a point having Coordinates of X = 2,137,794.00 and Y = 554,075.00; thence North 15,937.00 feet to the point of beginning, (This lease includes only waterbottoms claimed and owned by the state and specifically excludes any land), containing approximately **114 acres**, all as more particularly outlined on a plat on file in the Office of Mineral Resources, Department of Natural Resources. All bearings, distances and coordinates are based on Louisiana Coordinate System of 1927, (North or South Zone), where applicable.

NOTE: The above description of the Tract nominated for lease has been provided and corrected, where required, exclusively by the nomination party. Any mineral lease selected from this Tract and awarded by the Louisiana State Mineral and Energy Board shall be without warranty of any kind, either express, implied, or statutory, including, but not limited to, the implied warranties of merchantability and fitness for a particular purpose. Should the mineral lease awarded by the Louisiana State Mineral and Energy Board be subsequently modified, cancelled or abrogated due to the existence of conflicting leases, operating agreements, private claims or other future obligations or conditions which may affect all or any portion of the leased Tract, it shall not relieve the Lessee of the obligation to pay any bonus due thereon to the Louisiana State Mineral and Energy Board, nor shall the Louisiana State Mineral and Energy Board be obligated to refund any consideration paid by the Lessor prior to such modification, cancellation, or abrogation, including, but not limited to, bonuses, rentals and royalties.

Bidder	Cash Payment	Price/Acre	Rental	Oil	Gas	Other

Applicant: GREEN LEAF RESOURCES

Legend

10120009

Active\_Leases

IMAGERY.DOQQ\_2004\_1M

CALDWELL PARISH

T15N - R4E

BAYOU LAFOURCHE

SL 19623

P.O.B.

0 3,000 Feet

T14N - R4E

**TRACT 41732 - Caldwell Parish, Louisiana**

All of the lands now or formerly constituting the beds and bottoms of all water bodies of every nature and description as to which title is vested in the State of Louisiana, together with all islands arising therein and other lands formed by accretion or by reliction, where allowed by law, excepting tax adjudicated lands, and not presently under mineral lease on December 8, 2010, situated in Caldwell Parish, Louisiana, and more particularly described as follows: Beginning at a point having Coordinates of X = 2,137,794.00 and Y = 554,075.00; thence East 14,891.00 feet to a point having Coordinates of X = 2,152,685.00 and Y = 554,075.00; thence South 10,512.00 feet to a point having Coordinates of X = 2,152,685.00 and Y = 543,563.00; thence West 14,891.00 feet to a point having Coordinates of X = 2,137,794.00 and Y = 543,563.00; thence North 10,512.00 feet to the point of beginning, (This lease includes only waterbottoms claimed and owned by the state and specifically excludes any land), containing approximately **55 acres**, all as more particularly outlined on a plat on file in the Office of Mineral Resources, Department of Natural Resources. All bearings, distances and coordinates are based on Louisiana Coordinate System of 1927, (North or South Zone), where applicable.

NOTE: The above description of the Tract nominated for lease has been provided and corrected, where required, exclusively by the nomination party. Any mineral lease selected from this Tract and awarded by the Louisiana State Mineral and Energy Board shall be without warranty of any kind, either express, implied, or statutory, including, but not limited to, the implied warranties of merchantability and fitness for a particular purpose. Should the mineral lease awarded by the Louisiana State Mineral and Energy Board be subsequently modified, cancelled or abrogated due to the existence of conflicting leases, operating agreements, private claims or other future obligations or conditions which may affect all or any portion of the leased Tract, it shall not relieve the Lessee of the obligation to pay any bonus due thereon to the Louisiana State Mineral and Energy Board, nor shall the Louisiana State Mineral and Energy Board be obligated to refund any consideration paid by the Lessor prior to such modification, cancellation, or abrogation, including, but not limited to, bonuses, rentals and royalties.

Bidder	Cash Payment	Price/Acre	Rental	Oil	Gas	Other

Applicant: GREEN LEAF RESOURCES



Legend

10120010

Wildlife

IMAGERY.DOQQ\_2004\_1M

0 3,000 Feet



CALDWELL PARISH

T14N - R4E

P.O.B.

T14N - R5E

BOEUF WMA

BAYOU LAFOURCHE

**TRACT 41733 - Allen Parish, Louisiana**

All of the lands now or formerly constituting the beds and bottoms of all water bodies of every nature and description as to which title is vested in the State of Louisiana, together with all islands arising therein and other lands formed by accretion or by reliction, where allowed by law, excepting tax adjudicated lands, and not presently under mineral lease on December 8, 2010, situated in Allen Parish, Louisiana, and more particularly described as follows: Beginning at a point having Coordinates of X = 1,497,800.00 and Y = 689,850.00; thence East 6,000.00 feet to a point having Coordinates of X = 1,503,800.00 and Y = 689,850.00; thence South 16,300.00 feet to a point having Coordinates of X = 1,503,800.00 and Y = 673,550.00; thence West 6,000.00 feet to a point having Coordinates of X = 1,497,800.00 and Y = 673,550.00; thence North 16,300.00 feet to the point of beginning, containing approximately **83 acres**, all as more particularly outlined on a plat on file in the Office of Mineral Resources, Department of Natural Resources. All bearings, distances and coordinates are based on Louisiana Coordinate System of 1927, (North or South Zone), where applicable.

NOTE: The above description of the Tract nominated for lease has been provided and corrected, where required, exclusively by the nomination party. Any mineral lease selected from this Tract and awarded by the Louisiana State Mineral and Energy Board shall be without warranty of any kind, either express, implied, or statutory, including, but not limited to, the implied warranties of merchantability and fitness for a particular purpose. Should the mineral lease awarded by the Louisiana State Mineral and Energy Board be subsequently modified, cancelled or abrogated due to the existence of conflicting leases, operating agreements, private claims or other future obligations or conditions which may affect all or any portion of the leased Tract, it shall not relieve the Lessee of the obligation to pay any bonus due thereon to the Louisiana State Mineral and Energy Board, nor shall the Louisiana State Mineral and Energy Board be obligated to refund any consideration paid by the Lessor prior to such modification, cancellation, or abrogation, including, but not limited to, bonuses, rentals and royalties.

NOTE: The above Tract is located upon a restricted scenic river and all operations in this area must be conducted in strict conformity with the regulations of the Corps of Engineers, U.S. Army.

Applicant: THEOPHILUS OIL, GAS & LAND SERVICES, LLC

Bidder	Cash Payment	Price/Acre	Rental	Oil	Gas	Other

10120041

IMAGERY.DOQQ\_2008\_1M\_CII

ALLEN PARISH

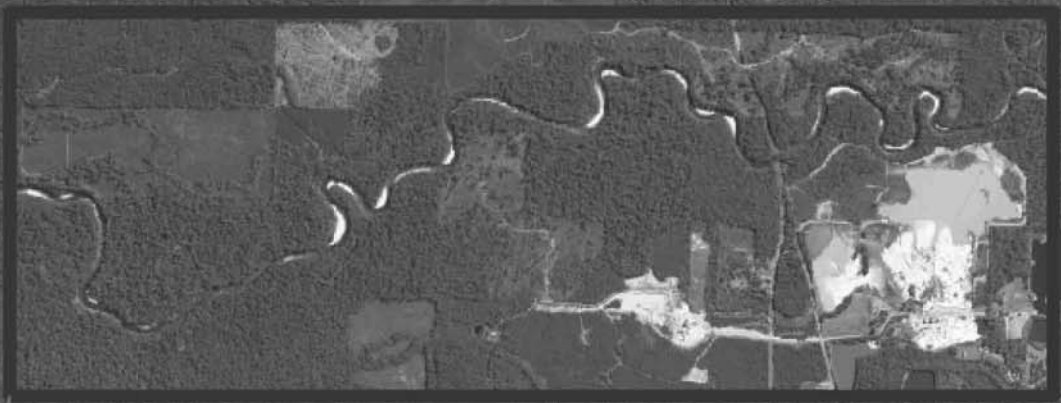
T6S - R5W

WHISKEY CHITTO CREEK

P.O.B.

CALCASIEU RIVER

T6S - R6W



**TRACT 41734 - Allen Parish, Louisiana**

All of the lands now or formerly constituting the beds and bottoms of all water bodies of every nature and description as to which title is vested in the State of Louisiana, together with all islands arising therein and other lands formed by accretion or by reliction, where allowed by law, excepting tax adjudicated lands, and not presently under mineral lease on December 8, 2010, situated in Allen Parish, Louisiana, and more particularly described as follows: Beginning at a point having Coordinates of X = 1,514,450.00 and Y = 689,250.00; thence East 11,000.00 feet to a point having Coordinates of X = 1,525,450.00 and Y = 689,250.00; thence South 11,000.00 feet to a point having Coordinates of X = 1,525,450.00 and Y = 678,250.00; thence West 11,000.00 feet to a point having Coordinates of X = 1,514,450.00 and Y = 678,250.00; thence North 11,000.00 feet to the point of beginning, containing approximately **50 acres**, all as more particularly outlined on a plat on file in the Office of Mineral Resources, Department of Natural Resources. All bearings, distances and coordinates are based on Louisiana Coordinate System of 1927, (North or South Zone), where applicable.

NOTE: The above description of the Tract nominated for lease has been provided and corrected, where required, exclusively by the nomination party. Any mineral lease selected from this Tract and awarded by the Louisiana State Mineral and Energy Board shall be without warranty of any kind, either express, implied, or statutory, including, but not limited to, the implied warranties of merchantability and fitness for a particular purpose. Should the mineral lease awarded by the Louisiana State Mineral and Energy Board be subsequently modified, cancelled or abrogated due to the existence of conflicting leases, operating agreements, private claims or other future obligations or conditions which may affect all or any portion of the leased Tract, it shall not relieve the Lessee of the obligation to pay any bonus due thereon to the Louisiana State Mineral and Energy Board, nor shall the Louisiana State Mineral and Energy Board be obligated to refund any consideration paid by the Lessor prior to such modification, cancellation, or abrogation, including, but not limited to, bonuses, rentals and royalties.

Applicant: THEOPHILUS OIL, GAS & LAND SERVICES, LLC

Bidder	Cash Payment	Price/Acre	Rental	Oil	Gas	Other

Legend

10120042

IMAGERY.DOQQ\_2008\_1M\_CIR

ALLEN PARISH

T6S - R5W

CALCASIEU RIVER

P.O.B.

0 3,000 Feet

**TRACT 41735 - Allen Parish, Louisiana**

All of the lands now or formerly constituting the beds and bottoms of all water bodies of every nature and description as to which title is vested in the State of Louisiana, together with all islands arising therein and other lands formed by accretion or by reliction, where allowed by law, excepting tax adjudicated lands, and not presently under mineral lease on December 8, 2010, situated in Allen Parish, Louisiana, and more particularly described as follows: Beginning at a point having Coordinates of X = 1,549,240.00 and Y = 683,300.00; thence East 5,500.00 feet to a point having Coordinates of X = 1,554,740.00 and Y = 683,300.00; thence South 5,500.00 feet to a point having Coordinates of X = 1,554,740.00 and Y = 677,800.00; thence West 5,500.00 feet to a point having Coordinates of X = 1,549,240.00 and Y = 677,800.00; thence North 5,500.00 feet to the point of beginning, containing approximately **10 acres**, all as more particularly outlined on a plat on file in the Office of Mineral Resources, Department of Natural Resources. All bearings, distances and coordinates are based on Louisiana Coordinate System of 1927, (North or South Zone), where applicable.

NOTE: The above description of the Tract nominated for lease has been provided and corrected, where required, exclusively by the nomination party. Any mineral lease selected from this Tract and awarded by the Louisiana State Mineral and Energy Board shall be without warranty of any kind, either express, implied, or statutory, including, but not limited to, the implied warranties of merchantability and fitness for a particular purpose. Should the mineral lease awarded by the Louisiana State Mineral and Energy Board be subsequently modified, cancelled or abrogated due to the existence of conflicting leases, operating agreements, private claims or other future obligations or conditions which may affect all or any portion of the leased Tract, it shall not relieve the Lessee of the obligation to pay any bonus due thereon to the Louisiana State Mineral and Energy Board, nor shall the Louisiana State Mineral and Energy Board be obligated to refund any consideration paid by the Lessor prior to such modification, cancellation, or abrogation, including, but not limited to, bonuses, rentals and royalties.

Applicant: THEOPHILUS OIL, GAS & LAND SERVICES, LLC

Bidder	Cash Payment	Price/Acre	Rental	Oil	Gas	Other

Legend

10120040

IMAGERY.DOQQ\_2008\_1M\_CIR

ALLEN PARISH

T6S - R4W

BAYOU BLUE

P.O.B.

0 2,000 Feet



**TRACT 41736 - Cameron Parish, Louisiana**

All of the lands now or formerly constituting the beds and bottoms of all water bodies of every nature and description as to which title is vested in the State of Louisiana, together with all islands arising therein and other lands formed by accretion or by reliction, where allowed by law, excepting tax adjudicated lands, and not presently under mineral lease on December 8, 2010, situated in Cameron Parish, Louisiana, and more particularly described as follows: Beginning at a point having Coordinates of X = 1,547,683.00 and Y = 467,557.00; thence East 3,500.00 feet to a point having Coordinates of X = 1,551,183.00 and Y = 467,557.00; thence South 6,465.00 feet to a point having Coordinates of X = 1,551,183.00 and Y = 461,092.00; thence West 3,500.00 feet to a point having Coordinates of X = 1,547,683.00 and Y = 461,092.00; thence North 6,465.00 feet to the point of beginning, **LESS AND EXCEPT** that portion, if any, of State Lease No. 344, as amended, which may lie within the above described tract, containing approximately **519.46 acres**, all as more particularly outlined on a plat on file in the Office of Mineral Resources, Department of Natural Resources. All bearings, distances and coordinates are based on Louisiana Coordinate System of 1927, (North or South Zone), where applicable.

NOTE: The above description of the Tract nominated for lease has been provided and corrected, where required, exclusively by the nomination party. Any mineral lease selected from this Tract and awarded by the Louisiana State Mineral and Energy Board shall be without warranty of any kind, either express, implied, or statutory, including, but not limited to, the implied warranties of merchantability and fitness for a particular purpose. Should the mineral lease awarded by the Louisiana State Mineral and Energy Board be subsequently modified, cancelled or abrogated due to the existence of conflicting leases, operating agreements, private claims or other future obligations or conditions which may affect all or any portion of the leased Tract, it shall not relieve the Lessee of the obligation to pay any bonus due thereon to the Louisiana State Mineral and Energy Board, nor shall the Louisiana State Mineral and Energy Board be obligated to refund any consideration paid by the Lessor prior to such modification, cancellation, or abrogation, including, but not limited to, bonuses, rentals and royalties.

NOTE: The State of Louisiana does hereby reserve, and this lease shall be subject to, the imprescriptible right of surface use in the nature of a servitude in favor of the Department of Natural Resources, including its Offices and Commissions, for the sole purpose of implementing, constructing, servicing and maintaining approved coastal zone management and/or restoration projects. Utilization of any and all rights derived under this lease by the mineral lessee, its agents, successors or assigns, shall not interfere with nor hinder the reasonable surface use by the Department of Natural Resources, its Offices or Commissions, as herein above reserved.

Applicant: MINERAL SERVICES, INC.

Bidder	Cash Payment	Price/Acre	Rental	Oil	Gas	Other

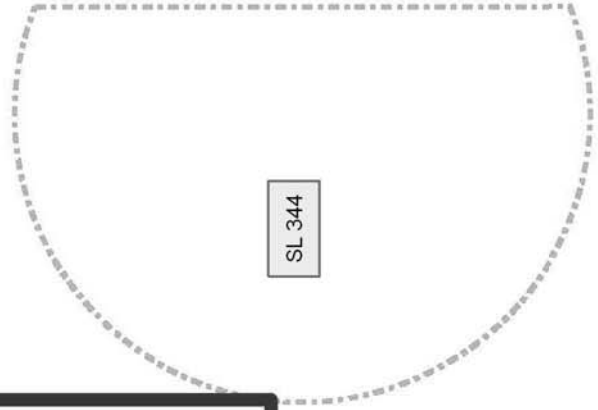
**Legend**  
10120034  
Active\_Leases



CAMERON PARISH

GRAND LAKE

P.O.B.



SL 344

**TRACT 41737 - Cameron Parish, Louisiana**

All of the lands now or formerly constituting the beds and bottoms of all water bodies of every nature and description as to which title is vested in the State of Louisiana, together with all islands arising therein and other lands formed by accretion or by reliction, where allowed by law, excepting tax adjudicated lands, and not presently under mineral lease on December 8, 2010, situated in Cameron Parish, Louisiana, and more particularly described as follows: Beginning at a point having Coordinates of X = 1,551,183.00 and Y = 467,557.00; thence East 4,859.82 feet to a point on the Western boundary of State Lease No. 19965 having Coordinates of X = 1,556,042.82 and Y = 467,557.00; thence South 24 degrees 42 minutes 35 seconds West 4,183.55 feet along the Western boundary of said State Lease No. 19965 to its Southwest corner, also being a point on the Northern boundary of State Lease No. 19938 having Coordinates of X = 1,554,294.01 and Y = 463,756.50; thence West approximately 84 feet along the Northern boundary of said State Lease No. 19938 to its Northwest corner, also being a point on the boundary of State Lease No. 344, as amended, having a Coordinate of Y = 463,756.50; thence Southwesterly along the boundary of said State Lease No. 344 along an arc to the left with a radius of 3,000.00 feet to a point of intersection with a North-South line having a Coordinate of X = 1,551,183.00; thence North approximately 6,524 feet to the point of beginning, **LESS AND EXCEPT** that portion, if any, of State Lease No. 344, as amended and State Lease No. 19938 which may lie within the above described tract, containing approximately **391 acres**, all as more particularly outlined on a plat on file in the Office of Mineral Resources, Department of Natural Resources. All bearings, distances and coordinates are based on Louisiana Coordinate System of 1927, (North or South Zone), where applicable.

NOTE: The above description of the Tract nominated for lease has been provided and corrected, where required, exclusively by the nomination party. Any mineral lease selected from this Tract and awarded by the Louisiana State Mineral and Energy Board shall be without warranty of any kind, either express, implied, or statutory, including, but not limited to, the implied warranties of merchantability and fitness for a particular purpose. Should the mineral lease awarded by the Louisiana State Mineral and Energy Board be subsequently modified, cancelled or abrogated due to the existence of conflicting leases, operating agreements, private claims or other future obligations or conditions which may affect all or any portion of the leased Tract, it shall not relieve the Lessee of the obligation to pay any bonus due thereon to the Louisiana State Mineral and Energy Board, nor shall the Louisiana State Mineral and Energy Board be obligated to refund any consideration paid by the Lessor prior to such modification, cancellation, or abrogation, including, but not limited to, bonuses, rentals and royalties.

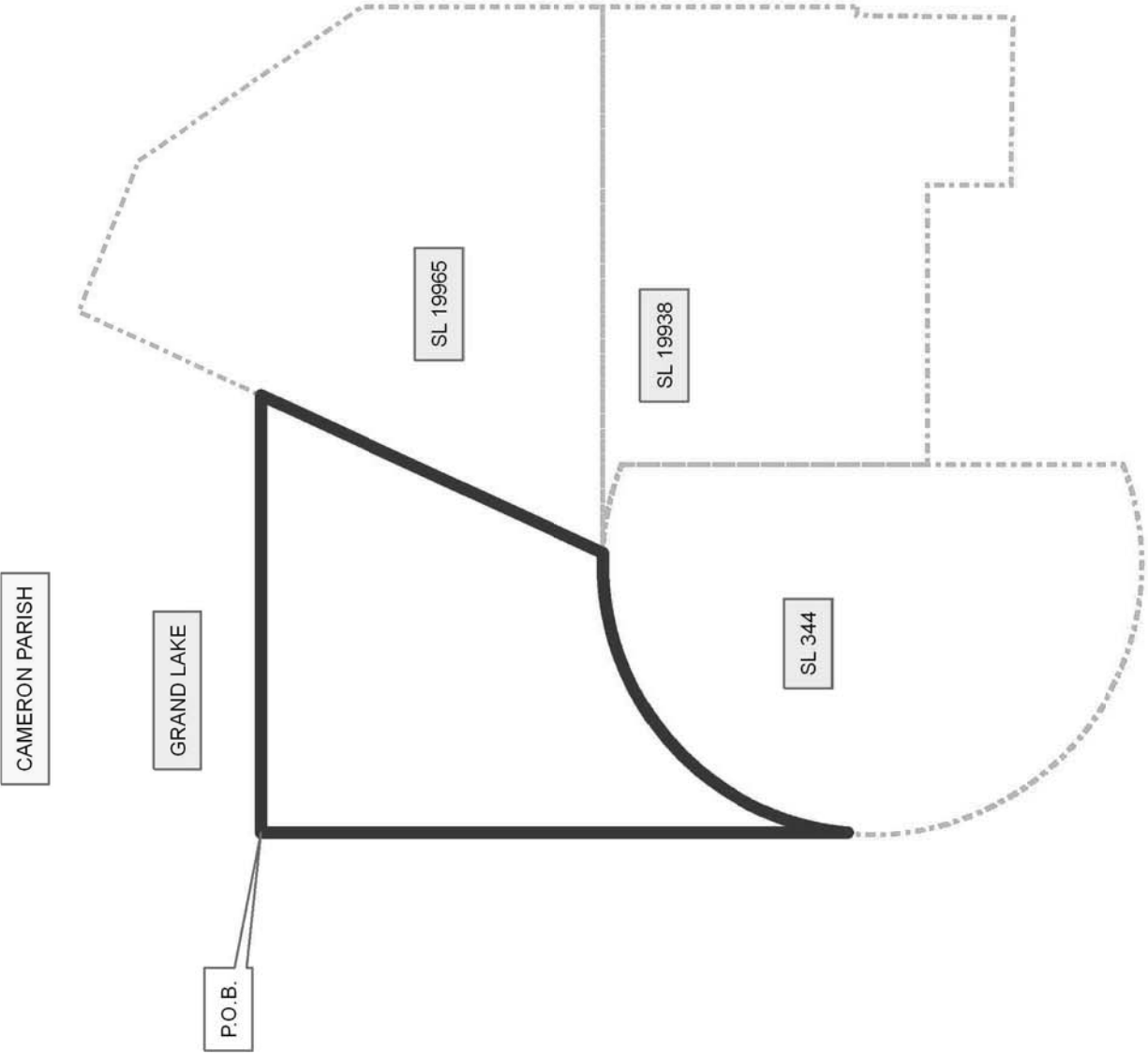
NOTE: The State of Louisiana does hereby reserve, and this lease shall be subject to, the imprescriptible right of surface use in the nature of a servitude in favor of the Department of Natural Resources, including its

Offices and Commissions, for the sole purpose of implementing, constructing, servicing and maintaining approved coastal zone management and/or restoration projects. Utilization of any and all rights derived under this lease by the mineral lessee, its agents, successors or assigns, shall not interfere with nor hinder the reasonable surface use by the Department of Natural Resources, its Offices or Commissions, as herein above reserved.

Applicant: MINERAL SERVICES, INC.

Bidder	Cash Payment	Price/Acre	Rental	Oil	Gas	Other

**Legend**  
10120032  
Active\_Leases



**TRACT 41738 - Cameron Parish, Louisiana**

All of the lands now or formerly constituting the beds and bottoms of all water bodies of every nature and description as to which title is vested in the State of Louisiana, together with all islands arising therein and other lands formed by accretion or by reliction, where allowed by law, excepting tax adjudicated lands, and not presently under mineral lease on December 8, 2010, situated in Cameron Parish, Louisiana, and more particularly described as follows: Beginning at a point having Coordinates of X = 1,547,683.00 and Y = 461,092.00; thence East 3,500.00 feet to a point having Coordinates of X = 1,551,183.00 and Y = 461,092.00; thence South approximately 59 feet to a point on the Western boundary of State Lease No. 344, as amended having a Coordinate of X = 1,551,183.00; thence Southerly along the boundary of said State Lease No. 344 along an arc to the left with a radius of 3,000.00 feet to a point of intersection with a North-South line having a Coordinate of X = 1,551,183.00; thence South approximately 4,852 feet to a point having Coordinates of X = 1,551,183.00 and Y = 455,628.00; thence West 3,500.00 feet to a point having Coordinates of X = 1,547,683.00 and Y = 455,628.00; thence North 5,464.00 feet to the point of beginning, **LESS AND EXCEPT** that portion, if any, of State Lease No. 344, as amended, which may lie within the above described tract, containing approximately **439 acres**, all as more particularly outlined on a plat on file in the Office of Mineral Resources, Department of Natural Resources. All bearings, distances and coordinates are based on Louisiana Coordinate System of 1927, (North or South Zone), where applicable.

NOTE: The above description of the Tract nominated for lease has been provided and corrected, where required, exclusively by the nomination party. Any mineral lease selected from this Tract and awarded by the Louisiana State Mineral and Energy Board shall be without warranty of any kind, either express, implied, or statutory, including, but not limited to, the implied warranties of merchantability and fitness for a particular purpose. Should the mineral lease awarded by the Louisiana State Mineral and Energy Board be subsequently modified, cancelled or abrogated due to the existence of conflicting leases, operating agreements, private claims or other future obligations or conditions which may affect all or any portion of the leased Tract, it shall not relieve the Lessee of the obligation to pay any bonus due thereon to the Louisiana State Mineral and Energy Board, nor shall the Louisiana State Mineral and Energy Board be obligated to refund any consideration paid by the Lessor prior to such modification, cancellation, or abrogation, including, but not limited to, bonuses, rentals and royalties.

NOTE: The State of Louisiana does hereby reserve, and this lease shall be subject to, the imprescriptible right of surface use in the nature of a servitude in favor of the Department of Natural Resources, including its Offices and Commissions, for the sole purpose of implementing, constructing, servicing and maintaining approved coastal zone management and/or restoration projects. Utilization of any and all rights derived

under this lease by the mineral lessee, its agents, successors or assigns, shall not interfere with nor hinder the reasonable surface use by the Department of Natural Resources, its Offices or Commissions, as herein above reserved.

Applicant: MINERAL SERVICES, INC.

Bidder	Cash Payment	Price/Acre	Rental	Oil	Gas	Other



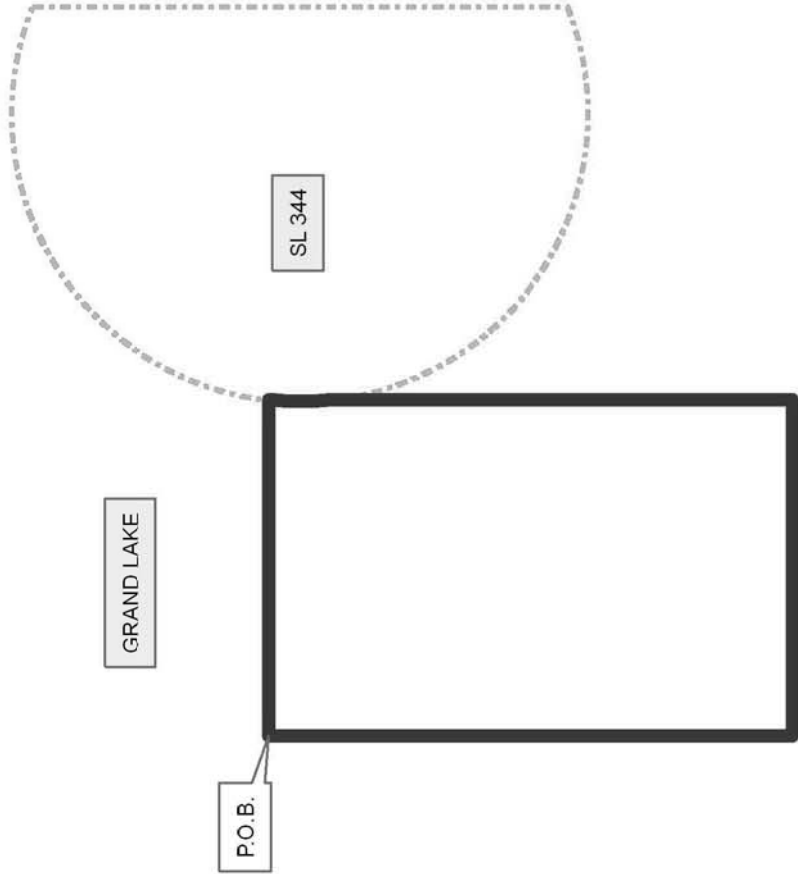
**Legend**  
10120033  
Active\_Leases

CAMERON PARISH

GRAND LAKE

SL 344

P.O.B.



**TRACT 41739 - Cameron Parish, Louisiana**

All of the lands now or formerly constituting the beds and bottoms of all water bodies of every nature and description as to which title is vested in the State of Louisiana, together with all islands arising therein and other lands formed by accretion or by reliction, where allowed by law, excepting tax adjudicated lands, and not presently under mineral lease on December 8, 2010, situated in Cameron Parish, Louisiana, and more particularly described as follows: Beginning at a point having Coordinates of X = 1,551,183.00 and Y = 455,628.00; thence North approximately 4,852 feet to a point on the Western boundary of State Lease No. 344, as amended having a Coordinate of X = 1,551,183.00; thence along the boundary of said State Lease No. 344 the following courses: Southeasterly along an arc to the left with a radius of 3,000.00 feet and Northerly approximately 2,166 feet to the Westernmost Southwest corner of State Lease No. 19938 having a Coordinate of Y = 460,136.00; thence East approximately 223 feet along the Southern boundary of said State Lease No. 19938 to the Northwest corner of State Lease No. 18809, as amended having Coordinates of X = 1,555,503.00 and Y = 460,136.00; thence along the boundary of State Lease No. 18809 the following courses: South 1,050.00 feet and South 39 degrees 11 minutes 19 seconds East 4,461.53 feet to a point having Coordinates of X = 1,558,322.14 and Y = 455,628.00; thence West 7,139.14 feet to the point of beginning, **LESS AND EXCEPT** that portion, if any, of State Lease No. 344, as amended and State Lease No. 19938 which may lie within the above described tract, containing approximately **380 acres**, all as more particularly outlined on a plat on file in the Office of Mineral Resources, Department of Natural Resources. All bearings, distances and coordinates are based on Louisiana Coordinate System of 1927, (North or South Zone), where applicable.

NOTE: The above description of the Tract nominated for lease has been provided and corrected, where required, exclusively by the nomination party. Any mineral lease selected from this Tract and awarded by the Louisiana State Mineral and Energy Board shall be without warranty of any kind, either express, implied, or statutory, including, but not limited to, the implied warranties of merchantability and fitness for a particular purpose. Should the mineral lease awarded by the Louisiana State Mineral and Energy Board be subsequently modified, cancelled or abrogated due to the existence of conflicting leases, operating agreements, private claims or other future obligations or conditions which may affect all or any portion of the leased Tract, it shall not relieve the Lessee of the obligation to pay any bonus due thereon to the Louisiana State Mineral and Energy Board, nor shall the Louisiana State Mineral and Energy Board be obligated to refund any consideration paid by the Lessor prior to such modification, cancellation, or abrogation, including, but not limited to, bonuses, rentals and royalties.

NOTE: The State of Louisiana does hereby reserve, and this lease shall be subject to, the imprescriptible right of surface use in the nature of a servitude in favor of the Department of Natural Resources, including its

Offices and Commissions, for the sole purpose of implementing, constructing, servicing and maintaining approved coastal zone management and/or restoration projects. Utilization of any and all rights derived under this lease by the mineral lessee, its agents, successors or assigns, shall not interfere with nor hinder the reasonable surface use by the Department of Natural Resources, its Offices or Commissions, as herein above reserved.

Applicant: MINERAL SERVICES, INC.

Bidder	Cash Payment	Price/Acre	Rental	Oil	Gas	Other

**Legend**  
10120035  
Active\_Leases

CAMERON PARISH

