

**TRACT 41759 - Caldwell Parish, Louisiana**

The following described property consisting of School Indemnity Lands, located in Caldwell Parish, Louisiana, not presently under mineral lease on December 8, 2010, and described as follows: That certain tract of land being the Northeast Quarter of the Southeast Quarter (NE/4 of SE/4), Section 10, Township 14 North, Range 4 East, Caldwell Parish, Louisiana, containing approximately **40.00 acres**, all as more particularly outlined on a plat on file in the Office of Mineral Resources, Department of Natural Resources. All bearings, distances and coordinates are based on the Louisiana Coordinate System of 1927 (North or South Zone) where applicable.

NOTE: The State Mineral and Energy Board is acting pursuant to La. R.S. 30:121-136 and pursuant to all other applicable statutes, and the proceeds derived from any lease that is awarded shall be paid to the Office of Mineral Resources and by it remitted to the State Treasurer for disposition in accordance with requirements of law relating to oil, gas and mineral leases of School Indemnity Lands.

NOTE: The above description of the Tract nominated for lease has been provided and corrected, where required, exclusively by the nomination party. Any mineral lease selected from this Tract and awarded by the Louisiana State Mineral and Energy Board shall be without warranty of any kind, either express, implied, or statutory, including, but not limited to, the implied warranties of merchantability and fitness for a particular purpose. Should the mineral lease awarded by the Louisiana State Mineral and Energy Board be subsequently modified, cancelled or abrogated due to the existence of conflicting leases, operating agreements, private claims or other future obligations or conditions which may affect all or any portion of the leased Tract, it shall not relieve the Lessee of the obligation to pay any bonus due thereon to the Louisiana State Mineral and Energy Board, nor shall the Louisiana State Mineral and Energy Board be obligated to refund any consideration paid by the Lessor prior to such modification, cancellation, or abrogation, including, but not limited to, bonuses, rentals and royalties.

NOTE: All monies paid to the Office of Mineral Resources and further remitted to the State Treasurer shall be disbursed to the following school boards in the stated proportions: 0.88% to Concordia Parish, 1.47% to Catahoula Parish, 29.08% to Franklin Parish, 0.29% to Richland Parish, 0.22% to Rapides Parish, 0.18% to Avoyelles Parish, 0.30% to Caldwell Parish, 6.50% to West Carroll Parish, 2.50% to East Carroll Parish, 0.53% to Tensas Parish, 9.32% to Pointe Coupee Parish, 16.95% to Orleans Parish, 1.49% to Livingston Parish, 0.01% to Tangipahoa Parish, 11.49% to DeSoto Parish, 10.75% to Natchitoches Parish, 7.07% to Red River Parish, and 0.97% to Union Parish.

Bidder	Cash Payment	Price/Acre	Rental	Oil	Gas	Other
--------	--------------	------------	--------	-----	-----	-------


Applicant: GREEN LEAF RESOURCES

Legend

10120015

IMAGERY.DRG24000

CALDWELL PARISH

53AT

SEC 10

T14N - R4E

TRAIL BANK

SEC 11

50 in SPoil

Wild Boar Lake

54AT

500 Feet

**TRACT 41760 - Caldwell Parish, Louisiana**

The following described property consisting of School Indemnity Lands, located in Caldwell Parish, Louisiana, not presently under mineral lease on December 8, 2010, and described as follows: That certain tract of land being the Northwest Quarter of the Southwest Quarter (NW/4 of SW/4), Section 11, Township 14 North, Range 4 East, Caldwell Parish, Louisiana, containing approximately **39.82 acres**, all as more particularly outlined on a plat on file in the Office of Mineral Resources, Department of Natural Resources. All bearings, distances and coordinates are based on the Louisiana Coordinate System of 1927 (North or South Zone) where applicable.

NOTE: The State Mineral and Energy Board is acting pursuant to La. R.S. 30:121-136 and pursuant to all other applicable statutes, and the proceeds derived from any lease that is awarded shall be paid to the Office of Mineral Resources and by it remitted to the State Treasurer for disposition in accordance with requirements of law relating to oil, gas and mineral leases of School Indemnity Lands.

NOTE: The above description of the Tract nominated for lease has been provided and corrected, where required, exclusively by the nomination party. Any mineral lease selected from this Tract and awarded by the Louisiana State Mineral and Energy Board shall be without warranty of any kind, either express, implied, or statutory, including, but not limited to, the implied warranties of merchantability and fitness for a particular purpose. Should the mineral lease awarded by the Louisiana State Mineral and Energy Board be subsequently modified, cancelled or abrogated due to the existence of conflicting leases, operating agreements, private claims or other future obligations or conditions which may affect all or any portion of the leased Tract, it shall not relieve the Lessee of the obligation to pay any bonus due thereon to the Louisiana State Mineral and Energy Board, nor shall the Louisiana State Mineral and Energy Board be obligated to refund any consideration paid by the Lessor prior to such modification, cancellation, or abrogation, including, but not limited to, bonuses, rentals and royalties.

NOTE: All monies paid to the Office of Mineral Resources and further remitted to the State Treasurer shall be disbursed to the following school boards in the stated proportions: 0.85% to Evangeline Parish, 87.38% to Natchitoches Parish, 7.01% to Rapides Parish, 2.32% to Avoyelles Parish, 0.89% to Grant Parish, 1.15% to Webster Parish, 0.05% to Caldwell Parish, and 0.35% to Beauregard Parish.

Applicant: GREEN LEAF RESOURCES

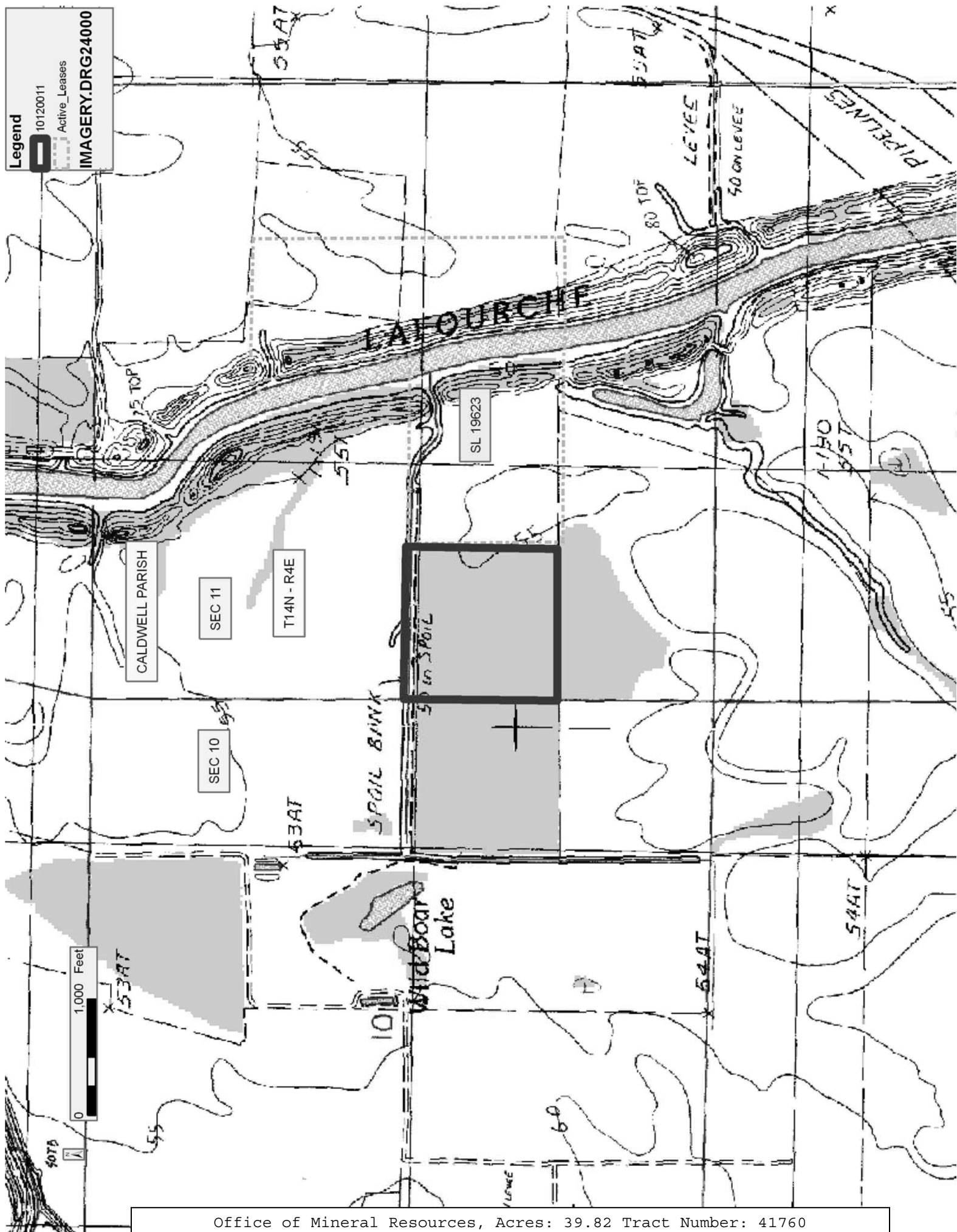
Bidder	Cash Payment	Price/Acre	Rental	Oil	Gas	Other

Legend

10120011

Active\_Leases

IMAGERY.DRG24000



**TRACT 41761 - Caldwell Parish, Louisiana**

The following described property consisting of School Indemnity Lands, located in Caldwell Parish, Louisiana, not presently under mineral lease on December 8, 2010, and described as follows: That certain tract of land being the Northeast Quarter of the Northeast Quarter (NE/4 of NE/4), Section 15, Township 14 North, Range 4 East, Caldwell Parish, Louisiana, containing approximately **40.04 acres**, all as more particularly outlined on a plat on file in the Office of Mineral Resources, Department of Natural Resources. All bearings, distances and coordinates are based on the Louisiana Coordinate System of 1927 (North or South Zone) where applicable.

NOTE: The State Mineral and Energy Board is acting pursuant to La. R.S. 30:121-136 and pursuant to all other applicable statutes, and the proceeds derived from any lease that is awarded shall be paid to the Office of Mineral Resources and by it remitted to the State Treasurer for disposition in accordance with requirements of law relating to oil, gas and mineral leases of School Indemnity Lands.

NOTE: The above description of the Tract nominated for lease has been provided and corrected, where required, exclusively by the nomination party. Any mineral lease selected from this Tract and awarded by the Louisiana State Mineral and Energy Board shall be without warranty of any kind, either express, implied, or statutory, including, but not limited to, the implied warranties of merchantability and fitness for a particular purpose. Should the mineral lease awarded by the Louisiana State Mineral and Energy Board be subsequently modified, cancelled or abrogated due to the existence of conflicting leases, operating agreements, private claims or other future obligations or conditions which may affect all or any portion of the leased Tract, it shall not relieve the Lessee of the obligation to pay any bonus due thereon to the Louisiana State Mineral and Energy Board, nor shall the Louisiana State Mineral and Energy Board be obligated to refund any consideration paid by the Lessor prior to such modification, cancellation, or abrogation, including, but not limited to, bonuses, rentals and royalties.

NOTE: All monies paid to the Office of Mineral Resources and further remitted to the State Treasurer shall be disbursed to the following school boards in the stated proportions: 6.29% to Webster Parish, 2.51% to Avoyelles Parish, 6.53% to Rapides Parish, 9.46% to Caldwell Parish, 0.03% to Franklin Parish, 1.41% to Ouachita Parish, 11.20% to Assumption Parish, 0.66% to Lafourche Parish, 34.50% to Evangeline Parish, 2.36% to Allen Parish, 1.67% to Union Parish, 2.27% to St. Martin Parish, 0.23% to Iberia Parish, 12.69% to Bienville Parish, and 8.19% to Natchitoches Parish.

Applicant: GREEN LEAF RESOURCES

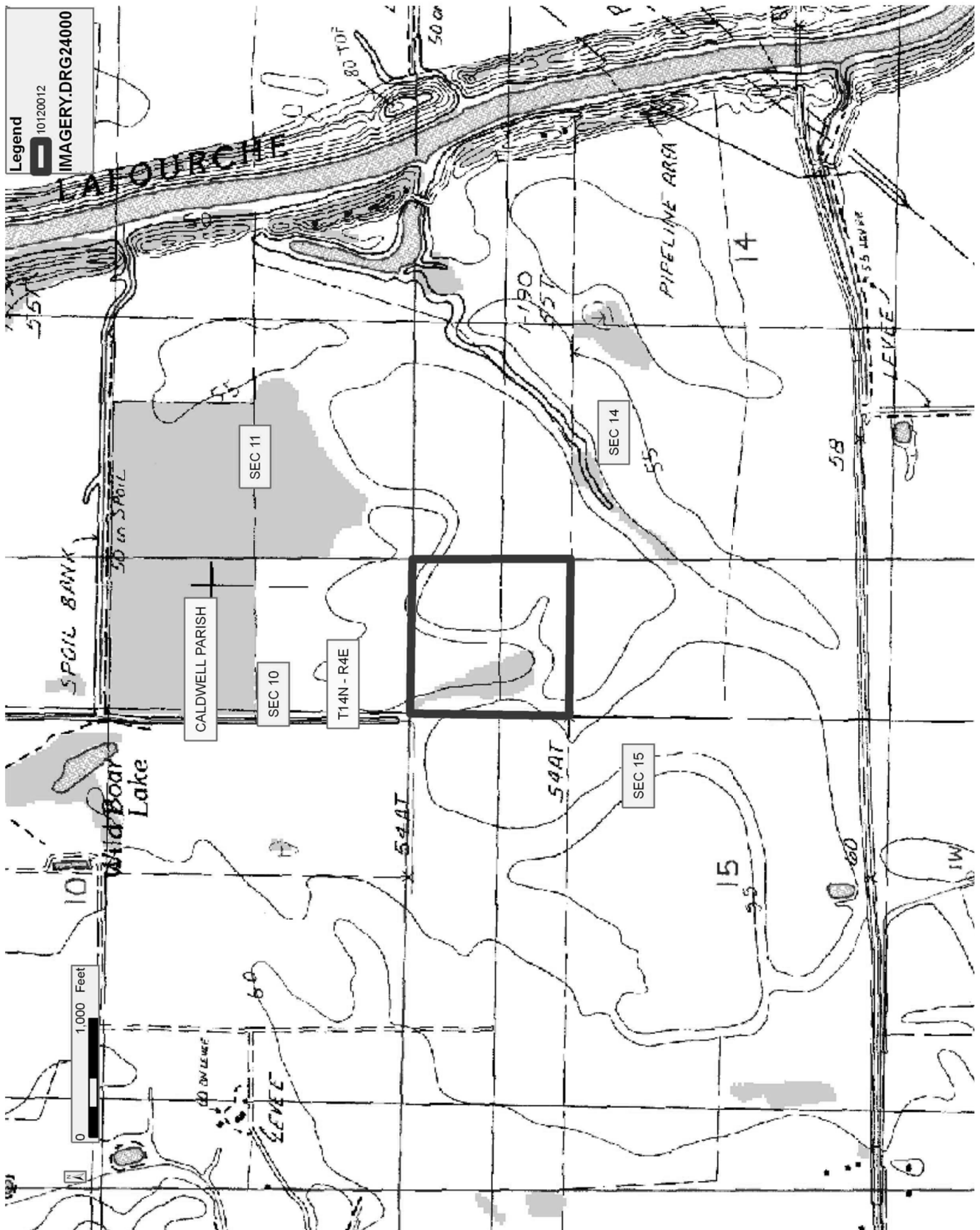
Bidder	Cash Payment	Price/Acre	Rental	Oil	Gas	Other



Legend

10120012

IMAGERY.DRG24000



Office of Mineral Resources, Acres: 40.04 Tract Number: 41761

**TRACT 41762 - Caldwell Parish, Louisiana**

The following described property consisting of School Indemnity Lands, located in Caldwell Parish, Louisiana, not presently under mineral lease on December 8, 2010, and described as follows: That certain tract of land being the North Half of the Southwest Quarter (N/2 of SW/4), Section 14, Township 14 North, Range 4 East, Caldwell Parish, Louisiana, containing approximately **79.76 acres**, all as more particularly outlined on a plat on file in the Office of Mineral Resources, Department of Natural Resources. All bearings, distances and coordinates are based on the Louisiana Coordinate System of 1927 (North or South Zone) where applicable.

NOTE: The State Mineral and Energy Board is acting pursuant to La. R.S. 30:121-136 and pursuant to all other applicable statutes, and the proceeds derived from any lease that is awarded shall be paid to the Office of Mineral Resources and by it remitted to the State Treasurer for disposition in accordance with requirements of law relating to oil, gas and mineral leases of School Indemnity Lands.

NOTE: The above description of the Tract nominated for lease has been provided and corrected, where required, exclusively by the nomination party. Any mineral lease selected from this Tract and awarded by the Louisiana State Mineral and Energy Board shall be without warranty of any kind, either express, implied, or statutory, including, but not limited to, the implied warranties of merchantability and fitness for a particular purpose. Should the mineral lease awarded by the Louisiana State Mineral and Energy Board be subsequently modified, cancelled or abrogated due to the existence of conflicting leases, operating agreements, private claims or other future obligations or conditions which may affect all or any portion of the leased Tract, it shall not relieve the Lessee of the obligation to pay any bonus due thereon to the Louisiana State Mineral and Energy Board, nor shall the Louisiana State Mineral and Energy Board be obligated to refund any consideration paid by the Lessor prior to such modification, cancellation, or abrogation, including, but not limited to, bonuses, rentals and royalties.

NOTE: All monies paid to the Office of Mineral Resources and further remitted to the State Treasurer shall be disbursed to the following school boards in the stated proportions: 10.18% to Avoyelles Parish, 35.36% to Evangeline Parish, 15.00% to Bienville Parish, 4.96% to Bossier Parish, 23.97% to Terrebonne Parish, 1.80% to Grant Parish, 7.29% to Red River Parish, and 1.44% to Natchitoches Parish.

NOTE: The interest being leased pertains to the mineral rights only.

Applicant: GREEN LEAF RESOURCES

Bidder	Cash Payment	Price/Acre	Rental	Oil	Gas	Other

Legend

10120016

IMAGERY.DRG24000

1,000 Feet

CALDWELL PARISH

X 52AT

SEC 14

T14N - R4E

15

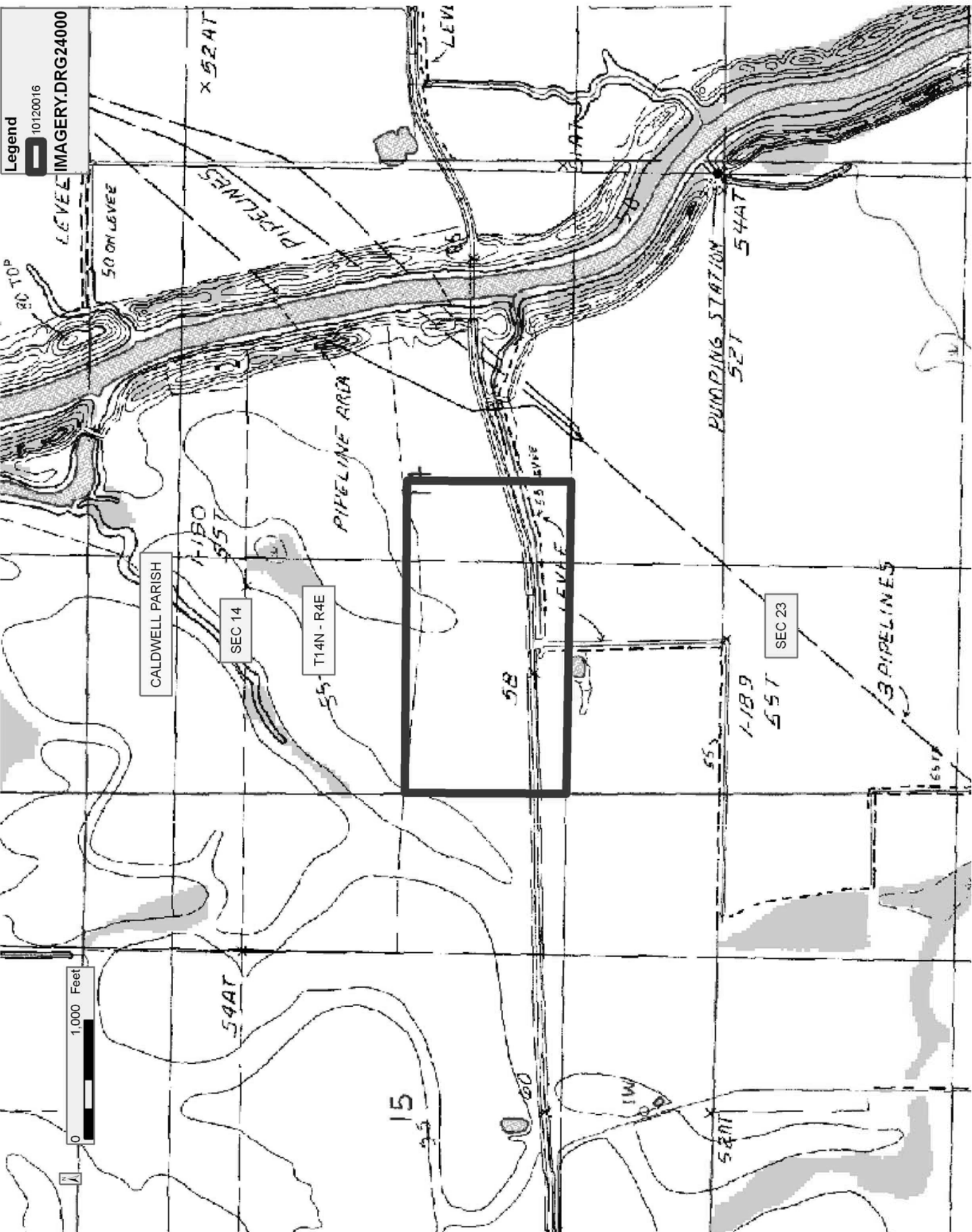
58

1-18.9

SEC 23

PUMPING STATION

54AT



**TRACT 41763 - Caldwell Parish, Louisiana**

The following described property consisting of School Indemnity Lands, located in Caldwell Parish, Louisiana, not presently under mineral lease on December 8, 2010, and described as follows: That certain tract of land being Lot 2, Section 24, Township 14 North, Range 4 East, Caldwell Parish, Louisiana, (This lease includes only school indemnity land and does not contain waterbottoms claimed and owned by the state), containing approximately **14.12 acres**, all as more particularly outlined on a plat on file in the Office of Mineral Resources, Department of Natural Resources. All bearings, distances and coordinates are based on the Louisiana Coordinate System of 1927 (North or South Zone) where applicable.

NOTE: The State Mineral and Energy Board is acting pursuant to La. R.S. 30:121-136 and pursuant to all other applicable statutes, and the proceeds derived from any lease that is awarded shall be paid to the Office of Mineral Resources and by it remitted to the State Treasurer for disposition in accordance with requirements of law relating to oil, gas and mineral leases of School Indemnity Lands.

NOTE: The above description of the Tract nominated for lease has been provided and corrected, where required, exclusively by the nomination party. Any mineral lease selected from this Tract and awarded by the Louisiana State Mineral and Energy Board shall be without warranty of any kind, either express, implied, or statutory, including, but not limited to, the implied warranties of merchantability and fitness for a particular purpose. Should the mineral lease awarded by the Louisiana State Mineral and Energy Board be subsequently modified, cancelled or abrogated due to the existence of conflicting leases, operating agreements, private claims or other future obligations or conditions which may affect all or any portion of the leased Tract, it shall not relieve the Lessee of the obligation to pay any bonus due thereon to the Louisiana State Mineral and Energy Board, nor shall the Louisiana State Mineral and Energy Board be obligated to refund any consideration paid by the Lessor prior to such modification, cancellation, or abrogation, including, but not limited to, bonuses, rentals and royalties.

NOTE: All monies paid to the Office of Mineral Resources and further remitted to the State Treasurer shall be disbursed to the following school boards in the stated proportions: 6.16% to Natchitoches Parish and 93.84% to East Baton Rouge Parish.

NOTE: The interest being leased pertains to the mineral rights only.

Applicant: GREEN LEAF RESOURCES

Bidder	Cash Payment	Price/Acre	Rental	Oil	Gas	Other

Legend

10120018

IMAGERY.DRG24000

CALDWELL PARISH

SEC 13

T14N - R4E

SEC 24

SEC 23

0 500 Feet

PUMPING STATION  
527 54AT

LEVEE

**TRACT 41764 - Caldwell Parish, Louisiana**

The following described property consisting of School Indemnity Lands, located in Caldwell Parish, Louisiana, not presently under mineral lease on December 8, 2010, and described as follows: That certain tract of land being the Southeast Quarter of the Northwest Quarter (SE/4 of NE/4), Section 23, Township 14 North, Range 4 East, Caldwell Parish, Louisiana, containing approximately **39.94 acres**, all as more particularly outlined on a plat on file in the Office of Mineral Resources, Department of Natural Resources. All bearings, distances and coordinates are based on the Louisiana Coordinate System of 1927 (North or South Zone) where applicable.

NOTE: The State Mineral and Energy Board is acting pursuant to La. R.S. 30:121-136 and pursuant to all other applicable statutes, and the proceeds derived from any lease that is awarded shall be paid to the Office of Mineral Resources and by it remitted to the State Treasurer for disposition in accordance with requirements of law relating to oil, gas and mineral leases of School Indemnity Lands.

NOTE: The above description of the Tract nominated for lease has been provided and corrected, where required, exclusively by the nomination party. Any mineral lease selected from this Tract and awarded by the Louisiana State Mineral and Energy Board shall be without warranty of any kind, either express, implied, or statutory, including, but not limited to, the implied warranties of merchantability and fitness for a particular purpose. Should the mineral lease awarded by the Louisiana State Mineral and Energy Board be subsequently modified, cancelled or abrogated due to the existence of conflicting leases, operating agreements, private claims or other future obligations or conditions which may affect all or any portion of the leased Tract, it shall not relieve the Lessee of the obligation to pay any bonus due thereon to the Louisiana State Mineral and Energy Board, nor shall the Louisiana State Mineral and Energy Board be obligated to refund any consideration paid by the Lessor prior to such modification, cancellation, or abrogation, including, but not limited to, bonuses, rentals and royalties.

NOTE: All monies paid to the Office of Mineral Resources and further remitted to the State Treasurer shall be disbursed to the following school boards in the stated proportions: 30.20% to Morehouse Parish, 4.09% to West Carroll Parish, 4.88% to Ouachita Parish, 3.77% to Caldwell Parish, 27.33% to LaSalle Parish, 21.68% to Catahoula Parish, 4.90% to Concordia Parish, 1.76% to Franklin Parish, 0.24% to Madison Parish, and 1.15% to Webster Parish.

NOTE: The interest being leased pertains to the mineral rights only.



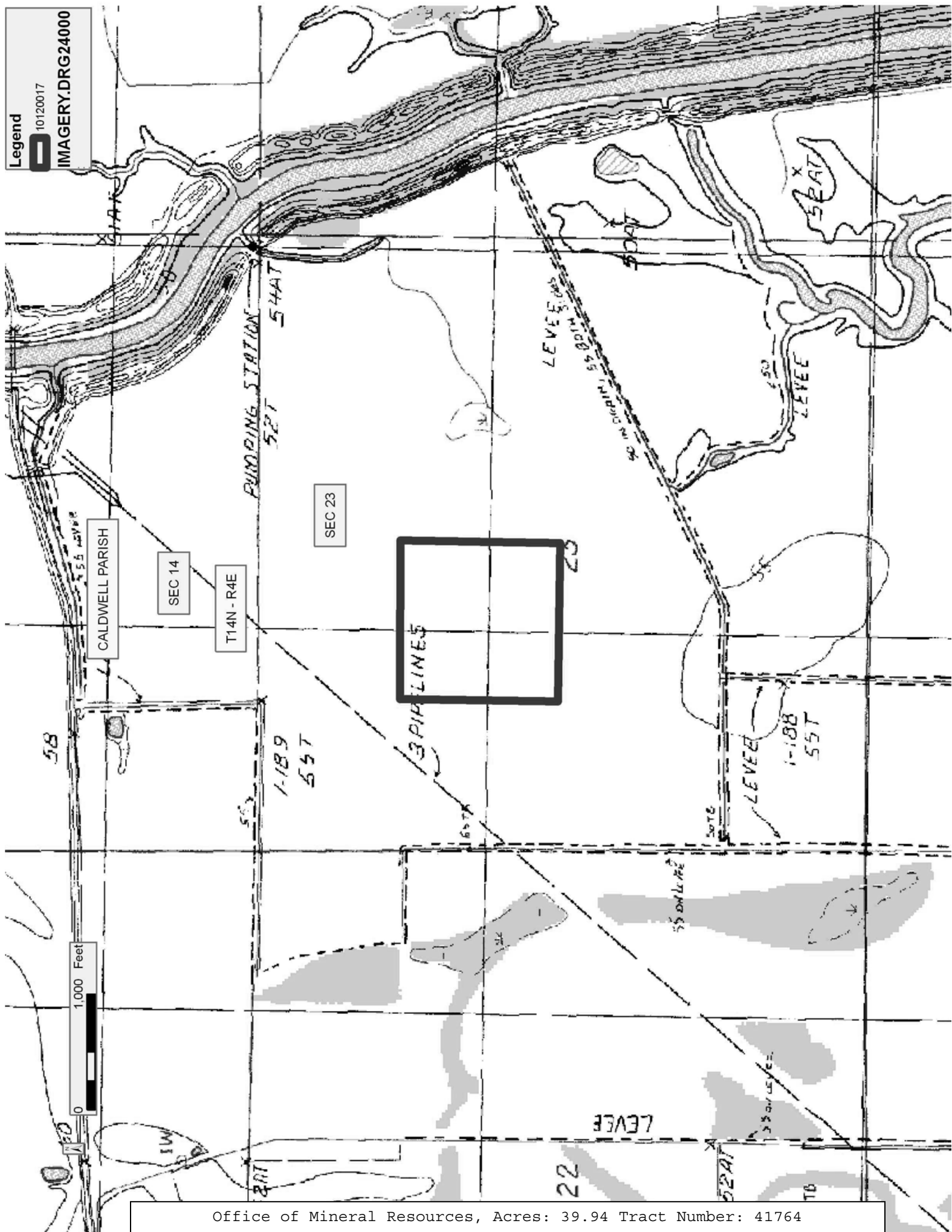
Applicant: GREEN LEAF RESOURCES

Bidder	Cash Payment	Price/Acre	Rental	Oil	Gas	Other

Legend

10120017

IMAGERY.DRG24000



**TRACT 41765 - Caldwell Parish, Louisiana**

The following described property consisting of School Indemnity Lands, located in Caldwell Parish, Louisiana, not presently under mineral lease on December 8, 2010, and described as follows: That certain tract of land being the South Half of the Northeast Quarter (S/2 of NE/4), Section 23, Township 14 North, Range 4 East, Caldwell Parish, Louisiana, containing approximately **79.92 acres**, all as more particularly outlined on a plat on file in the Office of Mineral Resources, Department of Natural Resources. All bearings, distances and coordinates are based on the Louisiana Coordinate System of 1927 (North or South Zone) where applicable.

NOTE: The State Mineral and Energy Board is acting pursuant to La. R.S. 30:121-136 and pursuant to all other applicable statutes, and the proceeds derived from any lease that is awarded shall be paid to the Office of Mineral Resources and by it remitted to the State Treasurer for disposition in accordance with requirements of law relating to oil, gas and mineral leases of School Indemnity Lands.

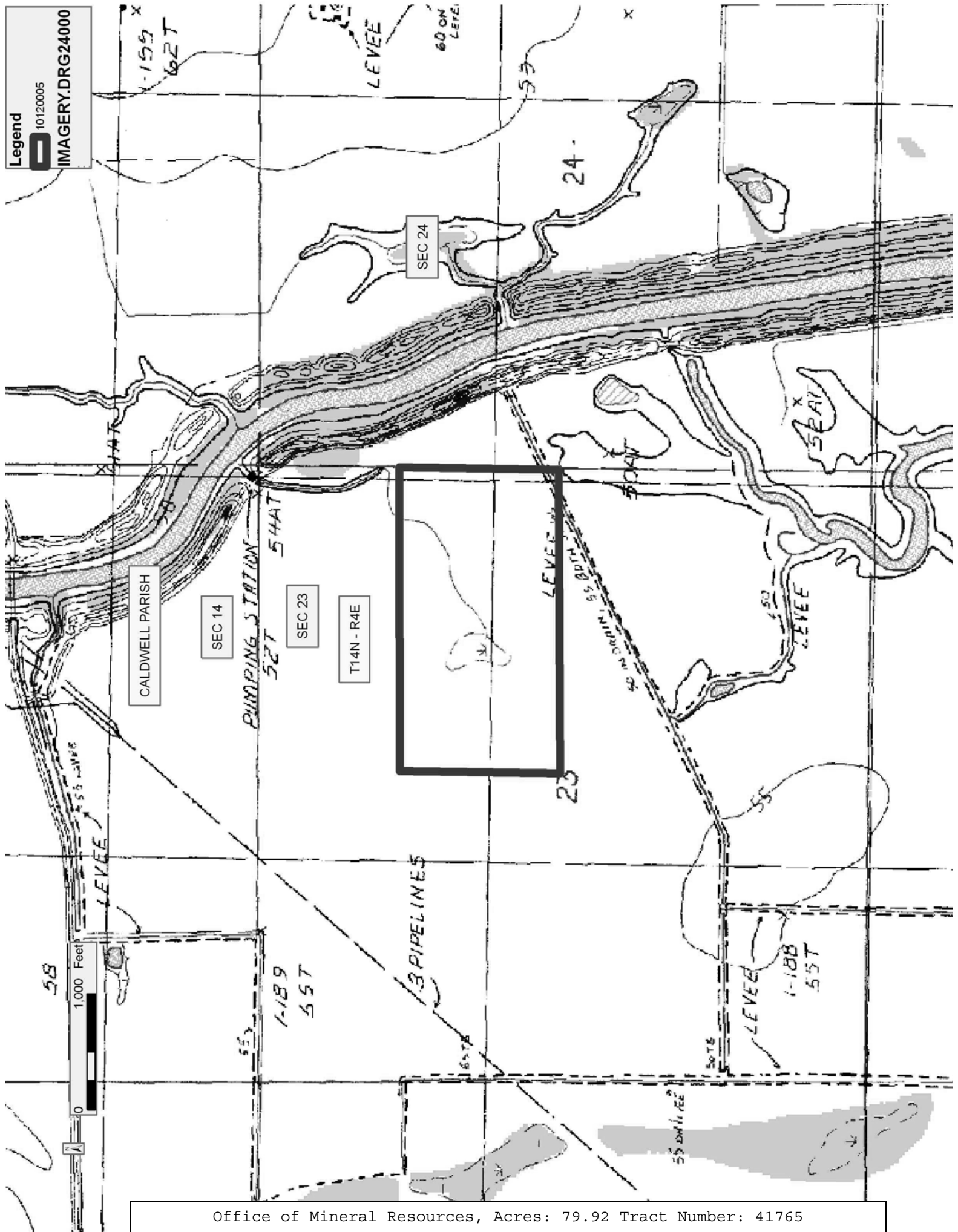
NOTE: The above description of the Tract nominated for lease has been provided and corrected, where required, exclusively by the nomination party. Any mineral lease selected from this Tract and awarded by the Louisiana State Mineral and Energy Board shall be without warranty of any kind, either express, implied, or statutory, including, but not limited to, the implied warranties of merchantability and fitness for a particular purpose. Should the mineral lease awarded by the Louisiana State Mineral and Energy Board be subsequently modified, cancelled or abrogated due to the existence of conflicting leases, operating agreements, private claims or other future obligations or conditions which may affect all or any portion of the leased Tract, it shall not relieve the Lessee of the obligation to pay any bonus due thereon to the Louisiana State Mineral and Energy Board, nor shall the Louisiana State Mineral and Energy Board be obligated to refund any consideration paid by the Lessor prior to such modification, cancellation, or abrogation, including, but not limited to, bonuses, rentals and royalties.

NOTE: All monies paid to the Office of Mineral Resources and further remitted to the State Treasurer shall be disbursed to the following school boards in the stated proportions: 50.41% to Bossier Parish, 27.84% to Caddo Parish, and 21.75% to Webster Parish.

NOTE: The interest being leased pertains to the mineral rights only.

Applicant: GREEN LEAF RESOURCES

Bidder	Cash Payment	Price/Acre	Rental	Oil	Gas	Other



**TRACT 41766 - Caldwell Parish, Louisiana**

The following described property consisting of School Indemnity Lands, located in Caldwell Parish, Louisiana, not presently under mineral lease on December 8, 2010, and described as follows: That certain tract of land being Lot 6, Section 24, Township 14 North, Range 4 East, Caldwell Parish, Louisiana, (This lease includes only school indemnity land and does not contain waterbottoms claimed and owned by the state), containing approximately **28.60 acres**, all as more particularly outlined on a plat on file in the Office of Mineral Resources, Department of Natural Resources. All bearings, distances and coordinates are based on the Louisiana Coordinate System of 1927 (North or South Zone) where applicable.

NOTE: The State Mineral and Energy Board is acting pursuant to La. R.S. 30:121-136 and pursuant to all other applicable statutes, and the proceeds derived from any lease that is awarded shall be paid to the Office of Mineral Resources and by it remitted to the State Treasurer for disposition in accordance with requirements of law relating to oil, gas and mineral leases of School Indemnity Lands.

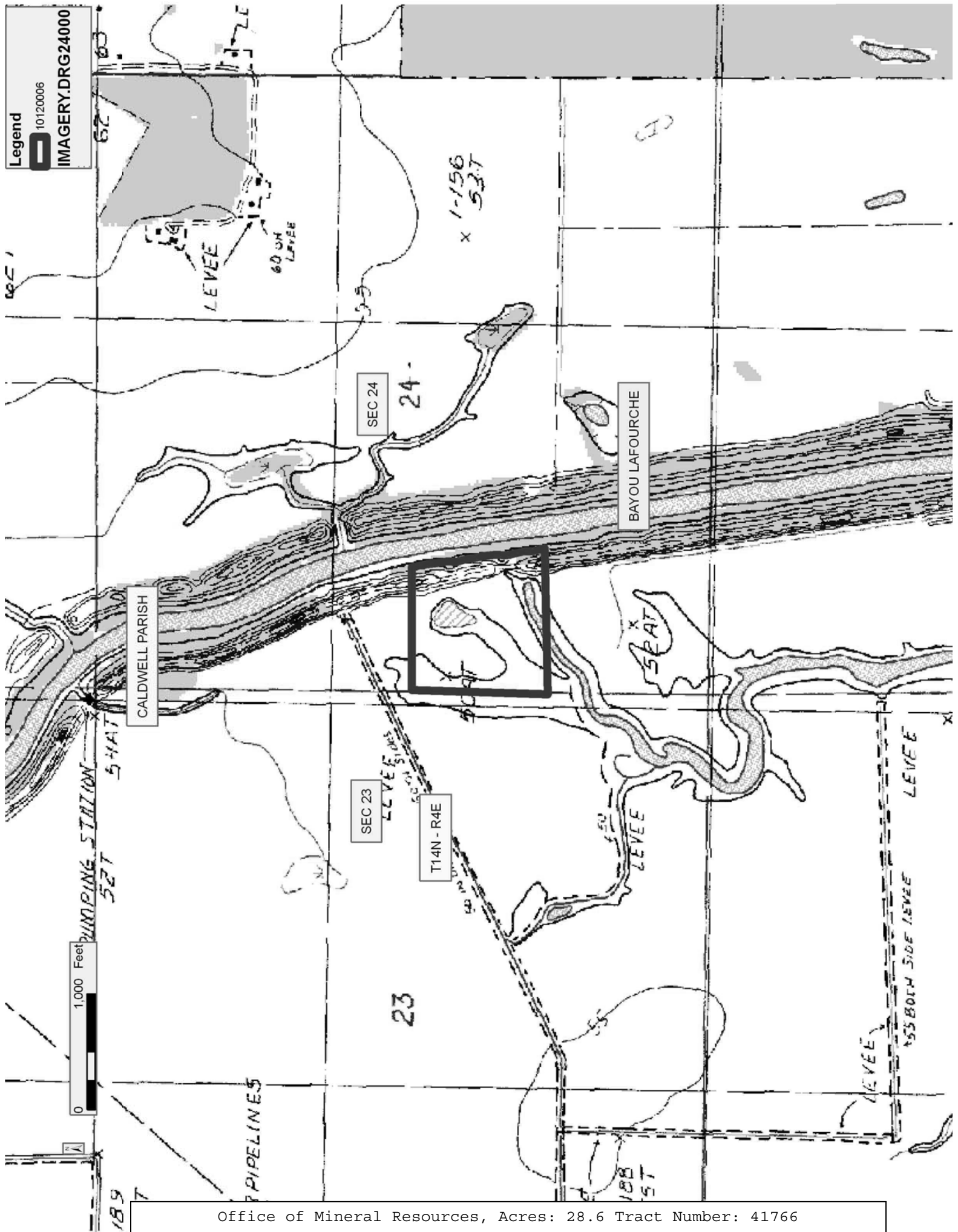
NOTE: The above description of the Tract nominated for lease has been provided and corrected, where required, exclusively by the nomination party. Any mineral lease selected from this Tract and awarded by the Louisiana State Mineral and Energy Board shall be without warranty of any kind, either express, implied, or statutory, including, but not limited to, the implied warranties of merchantability and fitness for a particular purpose. Should the mineral lease awarded by the Louisiana State Mineral and Energy Board be subsequently modified, cancelled or abrogated due to the existence of conflicting leases, operating agreements, private claims or other future obligations or conditions which may affect all or any portion of the leased Tract, it shall not relieve the Lessee of the obligation to pay any bonus due thereon to the Louisiana State Mineral and Energy Board, nor shall the Louisiana State Mineral and Energy Board be obligated to refund any consideration paid by the Lessor prior to such modification, cancellation, or abrogation, including, but not limited to, bonuses, rentals and royalties.

NOTE: All monies paid to the Office of Mineral Resources and further remitted to the State Treasurer shall be disbursed to the following school boards in the stated proportions: 72.16% to Bossier Parish and 27.84% to Vernon Parish.

NOTE: The interest being leased pertains to the mineral rights only.

Applicant: GREEN LEAF RESOURCES

Bidder	Cash Payment	Price/Acre	Rental	Oil	Gas	Other





**TRACT 41767 - Caldwell Parish, Louisiana**

The following described property consisting of School Indemnity Lands, located in Caldwell Parish, Louisiana, not presently under mineral lease on December 8, 2010, and described as follows: That certain tract of land being Northeast Quarter of the Southeast Quarter (NE/4 of SE/4), Section 24, Township 14 North, Range 4 East, Caldwell Parish, Louisiana, containing approximately **40.01 acres**, all as more particularly outlined on a plat on file in the Office of Mineral Resources, Department of Natural Resources. All bearings, distances and coordinates are based on the Louisiana Coordinate System of 1927 (North or South Zone) where applicable.

NOTE: The State Mineral and Energy Board is acting pursuant to La. R.S. 30:121-136 and pursuant to all other applicable statutes, and the proceeds derived from any lease that is awarded shall be paid to the Office of Mineral Resources and by it remitted to the State Treasurer for disposition in accordance with requirements of law relating to oil, gas and mineral leases of School Indemnity Lands.

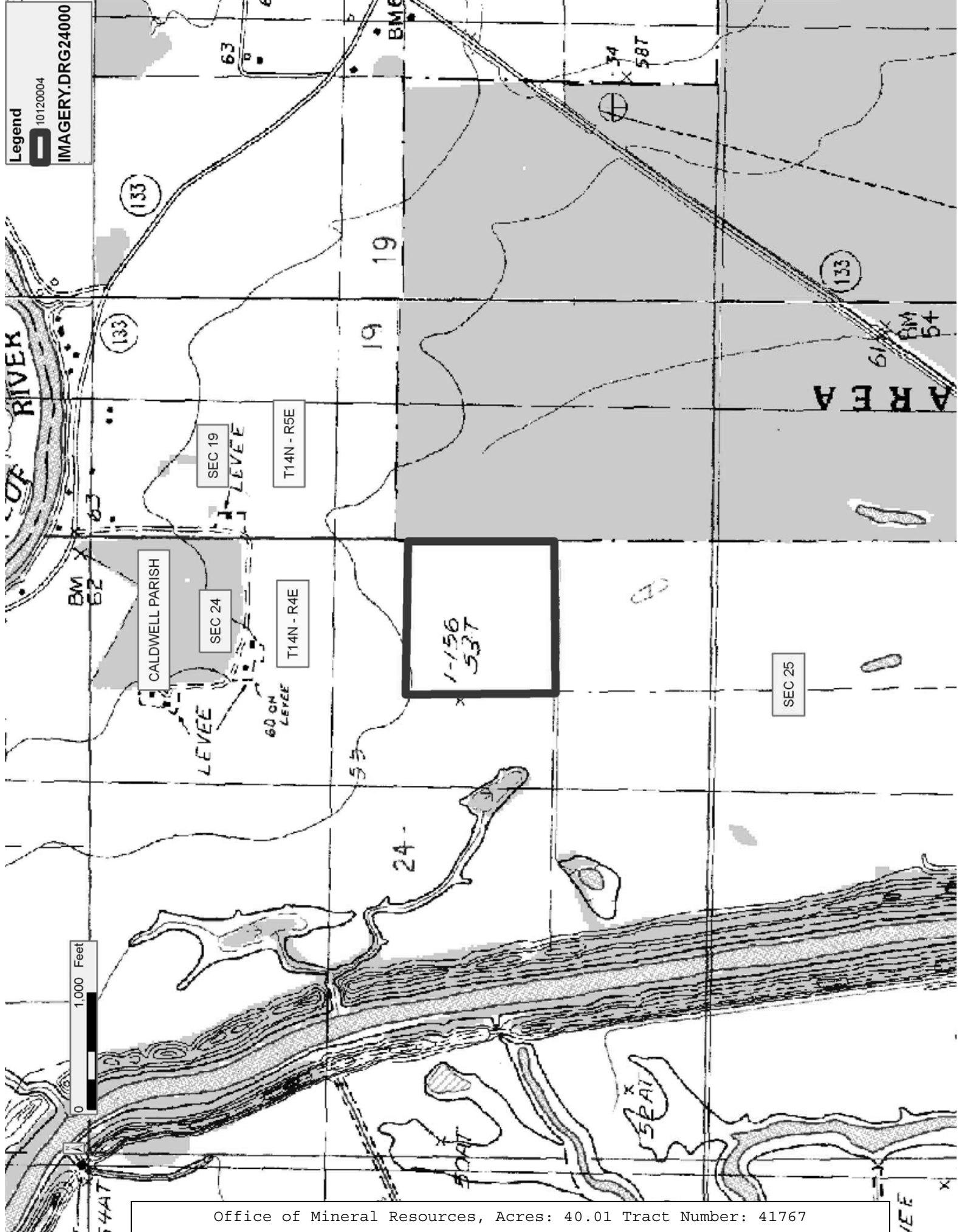
NOTE: The above description of the Tract nominated for lease has been provided and corrected, where required, exclusively by the nomination party. Any mineral lease selected from this Tract and awarded by the Louisiana State Mineral and Energy Board shall be without warranty of any kind, either express, implied, or statutory, including, but not limited to, the implied warranties of merchantability and fitness for a particular purpose. Should the mineral lease awarded by the Louisiana State Mineral and Energy Board be subsequently modified, cancelled or abrogated due to the existence of conflicting leases, operating agreements, private claims or other future obligations or conditions which may affect all or any portion of the leased Tract, it shall not relieve the Lessee of the obligation to pay any bonus due thereon to the Louisiana State Mineral and Energy Board, nor shall the Louisiana State Mineral and Energy Board be obligated to refund any consideration paid by the Lessor prior to such modification, cancellation, or abrogation, including, but not limited to, bonuses, rentals and royalties.

NOTE: All monies paid to the Office of Mineral Resources and further remitted to the State Treasurer shall be disbursed to the following school boards in the stated proportions: 0.06% to Caldwell Parish, 8.86% to Grant Parish, 6.29% to LaSalle Parish, 27.11% to Concordia Parish, 1.005% to DeSoto Parish, 1.005% to Sabine Parish, 50.86% to East Carroll Parish, and 4.81% to Franklin Parish.

NOTE: The interest being leased pertains to the mineral rights only.

Applicant: GREEN LEAF RESOURCES

Bidder	Cash Payment	Price/Acre	Rental	Oil	Gas	Other



**TRACT 41768 - Caldwell Parish, Louisiana**

The following described property consisting of School Indemnity Lands, located in Caldwell Parish, Louisiana, not presently under mineral lease on December 8, 2010, and described as follows: That certain tract of land being Lot 2, Section 25, Township 14 North, Range 4 East, Caldwell Parish, Louisiana, (This lease includes only school indemnity land and does not contain waterbottoms claimed and owned by the state), containing approximately **7.08 acres**, all as more particularly outlined on a plat on file in the Office of Mineral Resources, Department of Natural Resources. All bearings, distances and coordinates are based on the Louisiana Coordinate System of 1927 (North or South Zone) where applicable.

NOTE: The State Mineral and Energy Board is acting pursuant to La. R.S. 30:121-136 and pursuant to all other applicable statutes, and the proceeds derived from any lease that is awarded shall be paid to the Office of Mineral Resources and by it remitted to the State Treasurer for disposition in accordance with requirements of law relating to oil, gas and mineral leases of School Indemnity Lands.

NOTE: The above description of the Tract nominated for lease has been provided and corrected, where required, exclusively by the nomination party. Any mineral lease selected from this Tract and awarded by the Louisiana State Mineral and Energy Board shall be without warranty of any kind, either express, implied, or statutory, including, but not limited to, the implied warranties of merchantability and fitness for a particular purpose. Should the mineral lease awarded by the Louisiana State Mineral and Energy Board be subsequently modified, cancelled or abrogated due to the existence of conflicting leases, operating agreements, private claims or other future obligations or conditions which may affect all or any portion of the leased Tract, it shall not relieve the Lessee of the obligation to pay any bonus due thereon to the Louisiana State Mineral and Energy Board, nor shall the Louisiana State Mineral and Energy Board be obligated to refund any consideration paid by the Lessor prior to such modification, cancellation, or abrogation, including, but not limited to, bonuses, rentals and royalties.

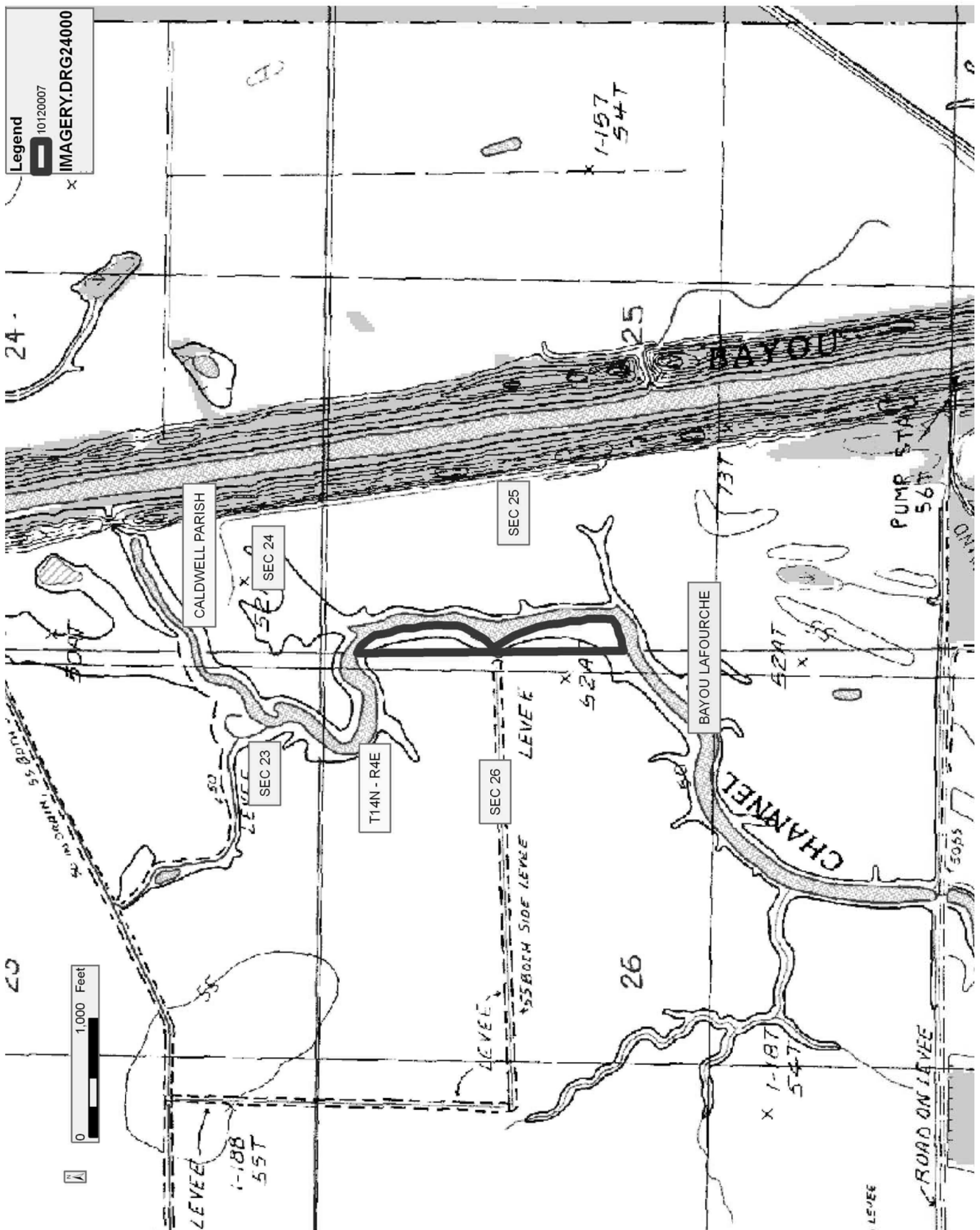
NOTE: All monies paid to the Office of Mineral Resources and further remitted to the State Treasurer shall be disbursed to the following school boards in the stated proportions: 91.02% to Caddo Parish and 8.98% to Bossier Parish.

NOTE: The interest being leased pertains to the mineral rights only.

Applicant: GREEN LEAF RESOURCES

Bidder	Cash Payment	Price/Acre	Rental	Oil	Gas	Other

Legend  
10120007  
IMAGERY.DRG24000



Office of Mineral Resources, Acres: 7.08 Tract Number: 41768