

**TRACT 41771 - Bienville Parish, Louisiana**

All of the mineral rights only under land adjudicated to and acquired by the State of Louisiana in and through a proper tax sale, and subsequently alienated by the State which retained the mineral rights thereto, and which is not under valid mineral lease from the State of Louisiana on December 8, 2010, situated in Bienville Parish, Louisiana, and being more fully described as follows: The Northeast Quarter (NE/4) of the Northwest Quarter (NW/4) of Section 30, Township 16 North, Range 8 West, in the Northwestern Land District, Bienville Parish, Louisiana, containing approximately **40.00 acres**, all as more particularly outlined on a plat on file in the Office of Mineral Resources, Department of Natural Resources. All bearings, distances and coordinates are based on Louisiana Coordinate System of 1927, (North or South Zone), where applicable.

NOTE: The above description of the Tract nominated for lease has been provided and corrected, where required, exclusively by the nomination party. Any mineral lease selected from this Tract and awarded by the Louisiana State Mineral and Energy Board shall be without warranty of any kind, either express, implied, or statutory, including, but not limited to, the implied warranties of merchantability and fitness for a particular purpose. Should the mineral lease awarded by the Louisiana State Mineral and Energy Board be subsequently modified, cancelled or abrogated due to the existence of conflicting leases, operating agreements, private claims or other future obligations or conditions which may affect all or any portion of the leased Tract, it shall not relieve the Lessee of the obligation to pay any bonus due thereon to the Louisiana State Mineral and Energy Board, nor shall the Louisiana State Mineral and Energy Board be obligated to refund any consideration paid by the Lessor prior to such modification, cancellation, or abrogation, including, but not limited to, bonuses, rentals and royalties.

NOTE: No surface activity on this tract undertaken in conjunction with any operations under any mineral lease given on this tract will be allowed without prior approval of the surface owner and further, no such right of surface use shall be deemed to have been given as part of any mineral lease by the State of Louisiana on this tract.

Applicant: HUNTER ENERGY CORPORATION

Bidder	Cash Payment	Price/Acre	Rental	Oil	Gas	Other

Legend

10120024

IMAGERY.DRG24000

BIENVILLE PARISH

SEC 19

T16N - R8W

SEC 30

30

0 500 Feet

**TRACT 41772 - Sabine Parish, Louisiana**

All of the mineral rights only under land adjudicated to and acquired by the State of Louisiana in and through a proper tax sale, and subsequently alienated by the State which retained the mineral rights thereto, and which is not under valid mineral lease from the State of Louisiana on December 8, 2010, situated in Sabine Parish, Louisiana, and being more fully described as follows: The Northeast Quarter of the Northeast Quarter (NE/4 of NE/4), Southeast Quarter of the Northwest Quarter of the Northeast Quarter (SE/4 of NW/4 of NE/4) of Section 25, Township 9 North, Range 11 West, Sabine Parish Louisiana, being the same lands adjudicated to the State in the name of Peggie Cranford Jackson for the nonpayment of taxes for the year 1937, and subsequently sold to L. B. Evitt, under Volume 42 Page 192, containing approximately **50 acres**, all as more particularly outlined on a plat on file in the Office of Mineral Resources, Department of Natural Resources. All bearings, distances and coordinates are based on Louisiana Coordinate System of 1927, (North or South Zone), where applicable.

NOTE: The above description of the Tract nominated for lease has been provided and corrected, where required, exclusively by the nomination party. Any mineral lease selected from this Tract and awarded by the Louisiana State Mineral and Energy Board shall be without warranty of any kind, either express, implied, or statutory, including, but not limited to, the implied warranties of merchantability and fitness for a particular purpose. Should the mineral lease awarded by the Louisiana State Mineral and Energy Board be subsequently modified, cancelled or abrogated due to the existence of conflicting leases, operating agreements, private claims or other future obligations or conditions which may affect all or any portion of the leased Tract, it shall not relieve the Lessee of the obligation to pay any bonus due thereon to the Louisiana State Mineral and Energy Board, nor shall the Louisiana State Mineral and Energy Board be obligated to refund any consideration paid by the Lessor prior to such modification, cancellation, or abrogation, including, but not limited to, bonuses, rentals and royalties.

NOTE: No surface activity on this tract undertaken in conjunction with any operations under any mineral lease given on this tract will be allowed without prior approval of the surface owner and further, no such right of surface use shall be deemed to have been given as part of any mineral lease by the State of Louisiana on this tract.

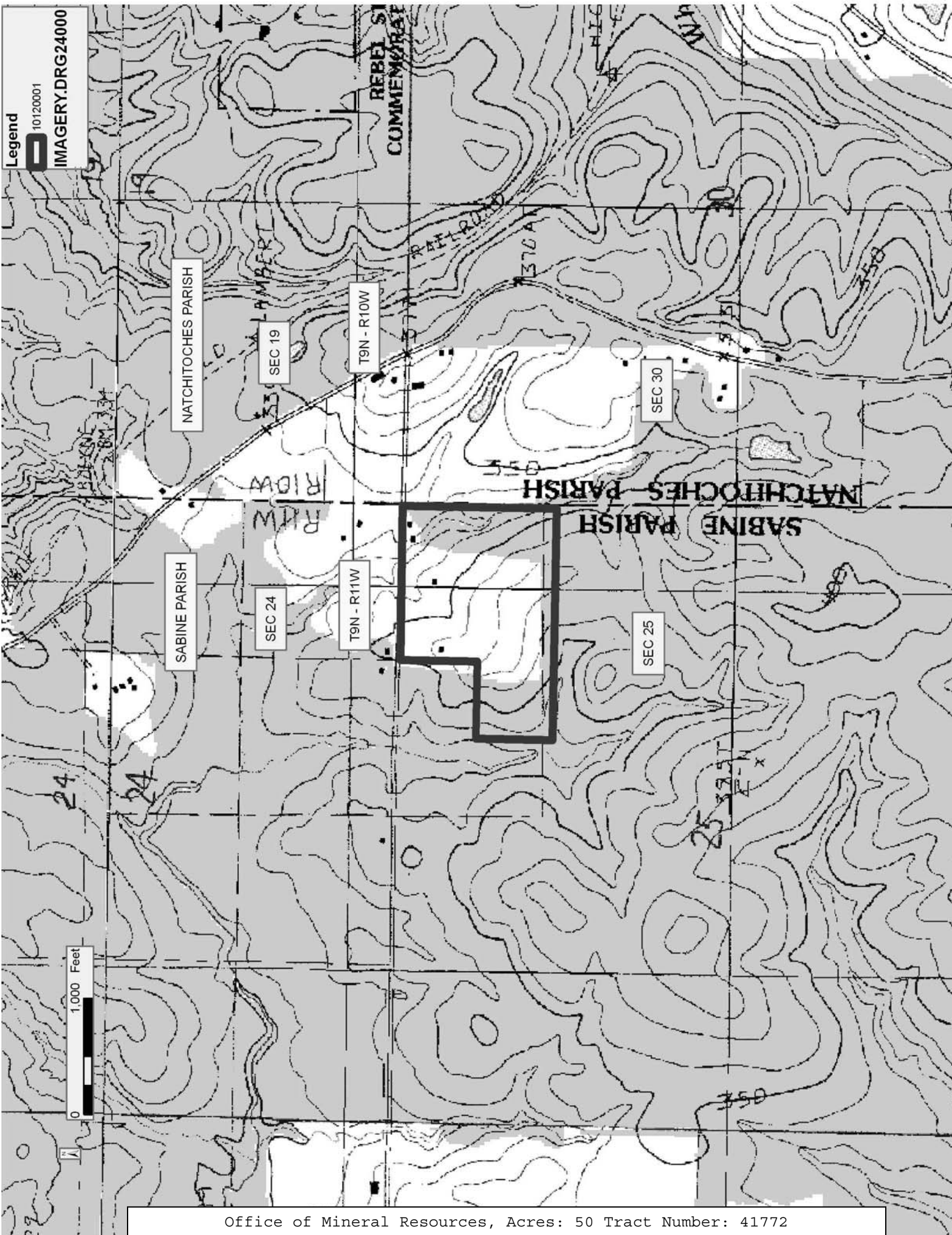
Applicant: AUDUBON OIL AND GAS CORPORATION

Bidder	Cash Payment	Price/Acre	Rental	Oil	Gas	Other

Legend

10120001

IMAGERY.DRG24000



**TRACT 41773 - Sabine Parish, Louisiana**

All of the mineral rights only under land adjudicated to and acquired by the State of Louisiana in and through a proper tax sale, and subsequently alienated by the State which retained the mineral rights thereto, and which is not under valid mineral lease from the State of Louisiana on December 8, 2010, situated in Sabine Parish, Louisiana, and being more fully described as follows: Beginning at a point 70 yards West of the Southeast Corner of the Northwest Quarter of the Southeast Quarter (NW/4 of the SE/4) Section 28, Township 9 North, Range 11 West, Sabine Parish Louisiana, thence Northerly for a distance of 420 yards, thence Easterly for a distance of 140 yards, thence Southerly for a distance of 420 yards, thence Westerly for a distance of 140 yards to the point of beginning, being the same mineral rights adjudicated to the State by way of said tax sale on April 18, 1959, and subsequently sold the surface rights to Joe Rains and C. A. Hoagland, containing approximately **12 acres**, all as more particularly outlined on a plat on file in the Office of Mineral Resources, Department of Natural Resources. All bearings, distances and coordinates are based on Louisiana Coordinate System of 1927, (North or South Zone), where applicable.

NOTE: The above description of the Tract nominated for lease has been provided and corrected, where required, exclusively by the nomination party. Any mineral lease selected from this Tract and awarded by the Louisiana State Mineral and Energy Board shall be without warranty of any kind, either express, implied, or statutory, including, but not limited to, the implied warranties of merchantability and fitness for a particular purpose. Should the mineral lease awarded by the Louisiana State Mineral and Energy Board be subsequently modified, cancelled or abrogated due to the existence of conflicting leases, operating agreements, private claims or other future obligations or conditions which may affect all or any portion of the leased Tract, it shall not relieve the Lessee of the obligation to pay any bonus due thereon to the Louisiana State Mineral and Energy Board, nor shall the Louisiana State Mineral and Energy Board be obligated to refund any consideration paid by the Lessor prior to such modification, cancellation, or abrogation, including, but not limited to, bonuses, rentals and royalties.

NOTE: No surface activity on this tract undertaken in conjunction with any operations under any mineral lease given on this tract will be allowed without prior approval of the surface owner and further, no such right of surface use shall be deemed to have been given as part of any mineral lease by the State of Louisiana on this tract.

Applicant: AUDUBON OIL AND GAS CORPORATION

Bidder	Cash Payment	Price/Acre	Rental	Oil	Gas	Other

Legend

10120002

IMAGERY.DRG24000

SABINE PARISH

SEC 28

T9N - R11W

Little

TRANSMISSION

SESTAT

28

28

300

0 500 Feet



**TRACT 41774 - Sabine Parish, Louisiana**

All of the mineral rights only under land adjudicated to and acquired by the State of Louisiana in and through a proper tax sale, and subsequently alienated by the State which retained the mineral rights thereto, and which is not under valid mineral lease from the State of Louisiana on December 8, 2010, situated in Sabine Parish, Louisiana, and being more fully described as follows: An undivided half interest in: 44 acres, SW 1/4 of SE 1/4, less 4 acres in SW corner to Mattie Ebarb in Section 36, Township 8 North Range 14 West; 8 more acres situated in SE 1/4 of SW 1/4 Section 36, Township 8 North Range 14 West, beginning at the NE corner of above described forty acres, thence West 320 yards, thence South 121 yards, thence East 320 yards, thence North 121 yards to place of beginning, being the same land adjudicated to the State of Louisiana for unpaid taxes for the year 1931, in the name of W.M. Ebarb. Subsequently, the State of Louisiana granted Patent No. 12817, dated August 27, 1937 to Mrs. Elvera M. Ebarb, containing approximately **44 gross acres (22 net acres)**, all as more particularly outlined on a plat on file in the Office of Mineral Resources, Department of Natural Resources. All bearings, distances and coordinates are based on Louisiana Coordinate System of 1927, (North or South Zone), where applicable.

NOTE: The above description of the Tract nominated for lease has been provided and corrected, where required, exclusively by the nomination party. Any mineral lease selected from this Tract and awarded by the Louisiana State Mineral and Energy Board shall be without warranty of any kind, either express, implied, or statutory, including, but not limited to, the implied warranties of merchantability and fitness for a particular purpose. Should the mineral lease awarded by the Louisiana State Mineral and Energy Board be subsequently modified, cancelled or abrogated due to the existence of conflicting leases, operating agreements, private claims or other future obligations or conditions which may affect all or any portion of the leased Tract, it shall not relieve the Lessee of the obligation to pay any bonus due thereon to the Louisiana State Mineral and Energy Board, nor shall the Louisiana State Mineral and Energy Board be obligated to refund any consideration paid by the Lessor prior to such modification, cancellation, or abrogation, including, but not limited to, bonuses, rentals and royalties.

NOTE: No surface activity on this tract undertaken in conjunction with any operations under any mineral lease given on this tract will be allowed without prior approval of the surface owner and further, no such right of surface use shall be deemed to have been given as part of any mineral lease by the State of Louisiana on this tract.

Applicant: JCS RESOURCES, L.L.C.

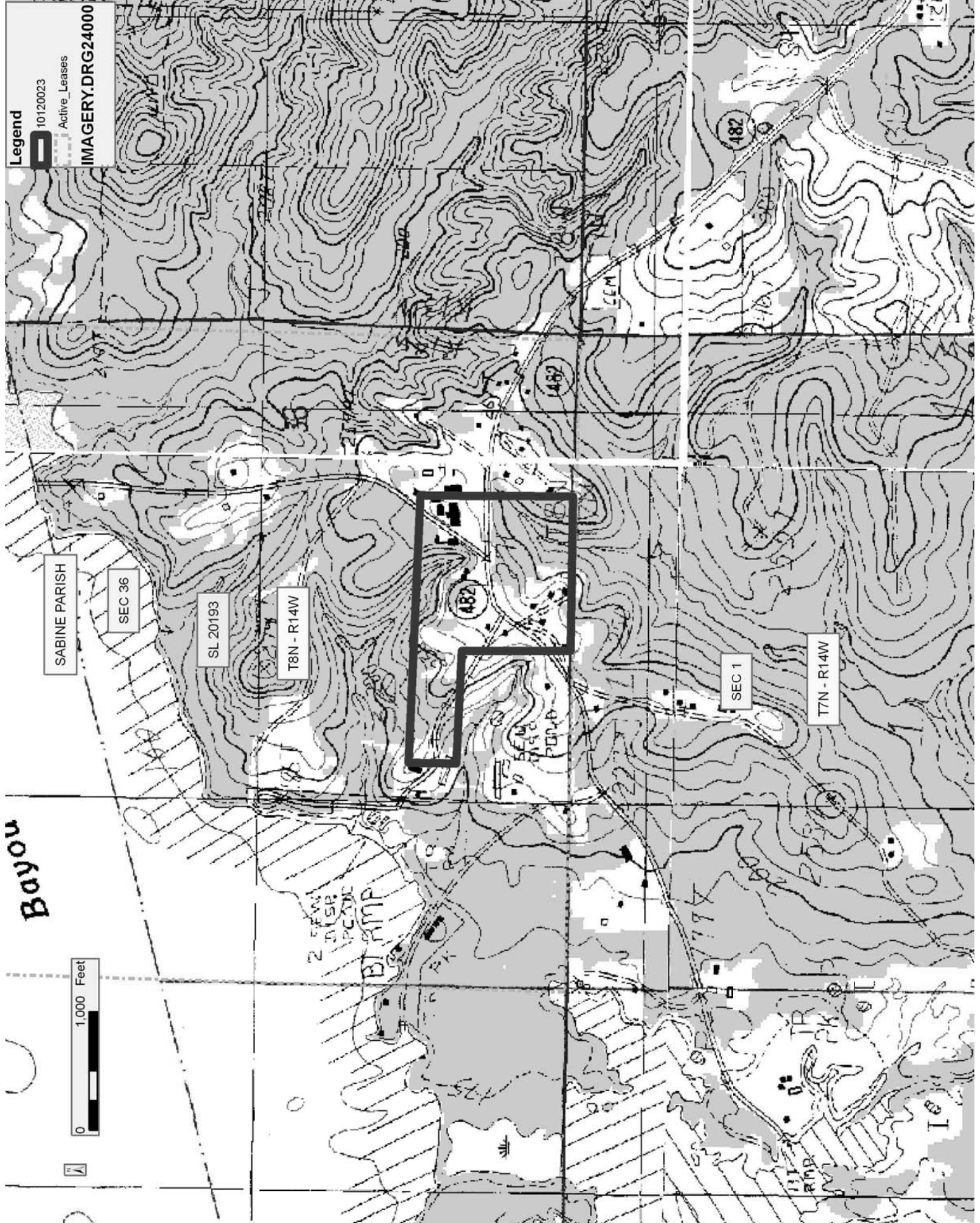
Bidder	Cash Payment	Price/Acre	Rental	Oil	Gas	Other

Legend

10120023

Active\_Leases

IMAGERY.DRG24000



Bayou

1,000 Feet