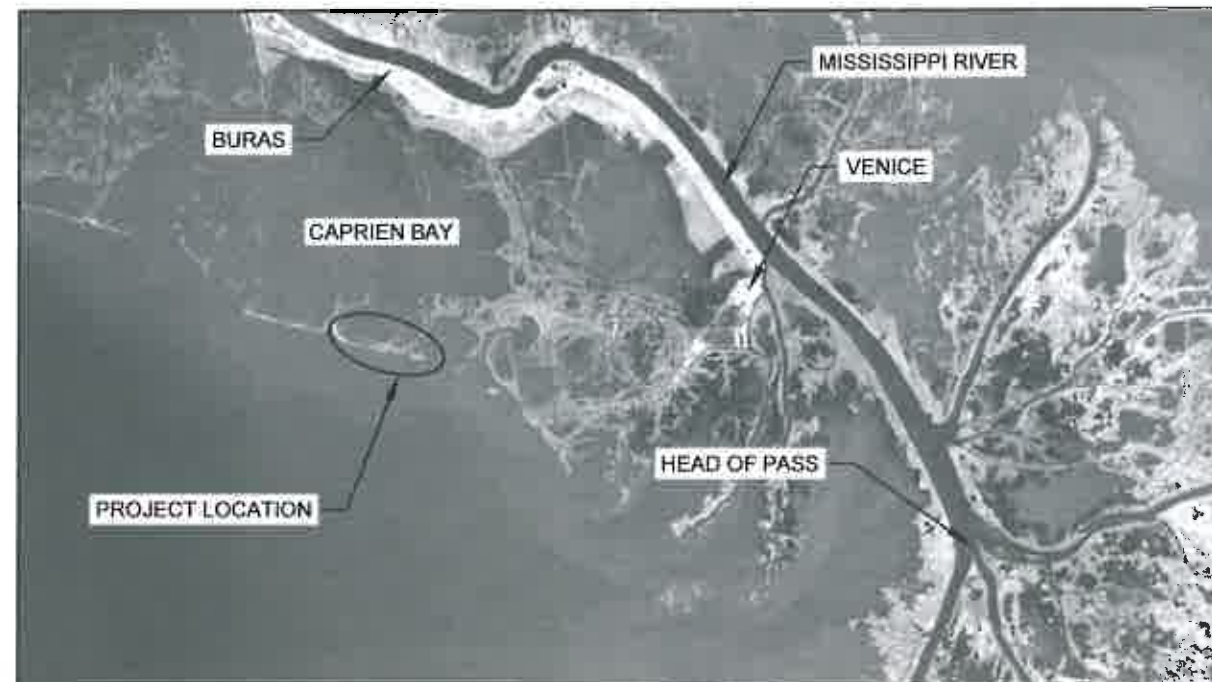


STATE OF LOUISIANA
COASTAL PROTECTION AND RESTORATION AUTHORITY

INDEX TO SHEETS

SHEET NO.	DESCRIPTION
1	TITLE SHEET
2	GENERAL NOTES
3	PROJECT LAYOUT
4	TYPICAL SECTION & DETAILS

SCOFIELD ISLAND RESTORATION
VEGETATIVE PLANTINGS PROJECT
BA-40
PLAQUEMINES PARISH, LOUISIANA



[Signature]
CHIEF, ENGINEERING DIVISION

[Signature]
ENGINEER MANAGER

[Signature]
ENGINEER SUPERVISOR

[Signature]
PROJECT DESIGNER

LICENSURE CLASSIFICATION REQUIREMENTS

MAJOR CATEGORY: HEAVY CONSTRUCTION

SUBCLASSIFICATION: LANDSCAPING, GRADING & BEAUTIFICATION

AND/OR

MAJOR CATEGORY: SPECIALITY

SUBCLASSIFICATION: COASTAL RESTORATION & HABITAT ENHANCEMENT AND/OR SEEDING, SODDING, LOAD & SOIL STABILIZATION, EROSION CONTROL, SHEET PILING

				COASTAL PROTECTION AND RESTORATION AUTHORITY 450 LAUREL STREET BATON ROUGE, LOUISIANA 70801		SCOFIELD ISLAND RESTORATION VEGETATIVE PLANTINGS PROJECT		TITLE SHEET	
				DRAWN BY: SHANE FAUST		DESIGNED BY: SHANE FAUST		STATE PROJECT NUMBER: BA-40	
						FEDERAL PROJECT NUMBER: N/A		DATE: AUGUST 2013	
				APPROVED BY: SHANNON HAYNES, P.E.				SHEET 1 OF 4	
REV.	DATE	DESCRIPTION	BY						

GENERAL NOTES

1. PLANS AND SPECIFICATIONS ARE COMPLEMENTARY; WHAT IS REQUIRED BY ONE IS BINDING AS IF REQUIRED BY ALL. CLARIFICATIONS AND INTERPRETATIONS OF, OR NOTIFICATIONS OF MINOR VARIATIONS AND DEVIATIONS IN THE CONTRACT DOCUMENTS, WILL BE ISSUED BY THE ENGINEER, IF NECESSARY.
2. EXACT LOCATION OF ALL PLANTS SHALL BE DETERMINED ON SITE BY THE ENGINEER DURING PRE-CONSTRUCTION LAYOUT.
3. ALL DISTANCE MEASUREMENTS SHOWN ON THE PLANS ARE APPROXIMATE.
4. NO EQUIPMENT MAY ALTER THE EXISTING CONDITIONS OF THE NEWLY CREATED MARSH OR DUNE PLATFORMS OR DISTURB EXISTING VEGETATION.
5. ANY DAMAGE TO EXISTING U.S. COAST GUARD NAVIGATION AIDS OR PRIVATE NAVIGATION AIDS SHALL BE REPAIRED BY THE CONTRACTOR TO U.S. COAST GUARD STANDARDS AT THE EXPENSE OF THE CONTRACTOR.
6. MEAN HIGH WATER (MHW) AND MEAN LOW WATER (MLW) ARE BASED ON THE CHEVRON STATION 289 AT PELICAN ISLAND, LA. ELEVATIONS ARE REFERENCED TO NAVD 88, US FEET.
7. ALL EQUIPMENT SHALL BE FLOATING AT ALL TIMES DURING TRANSIT TO AND FROM THE PROJECT SITE.

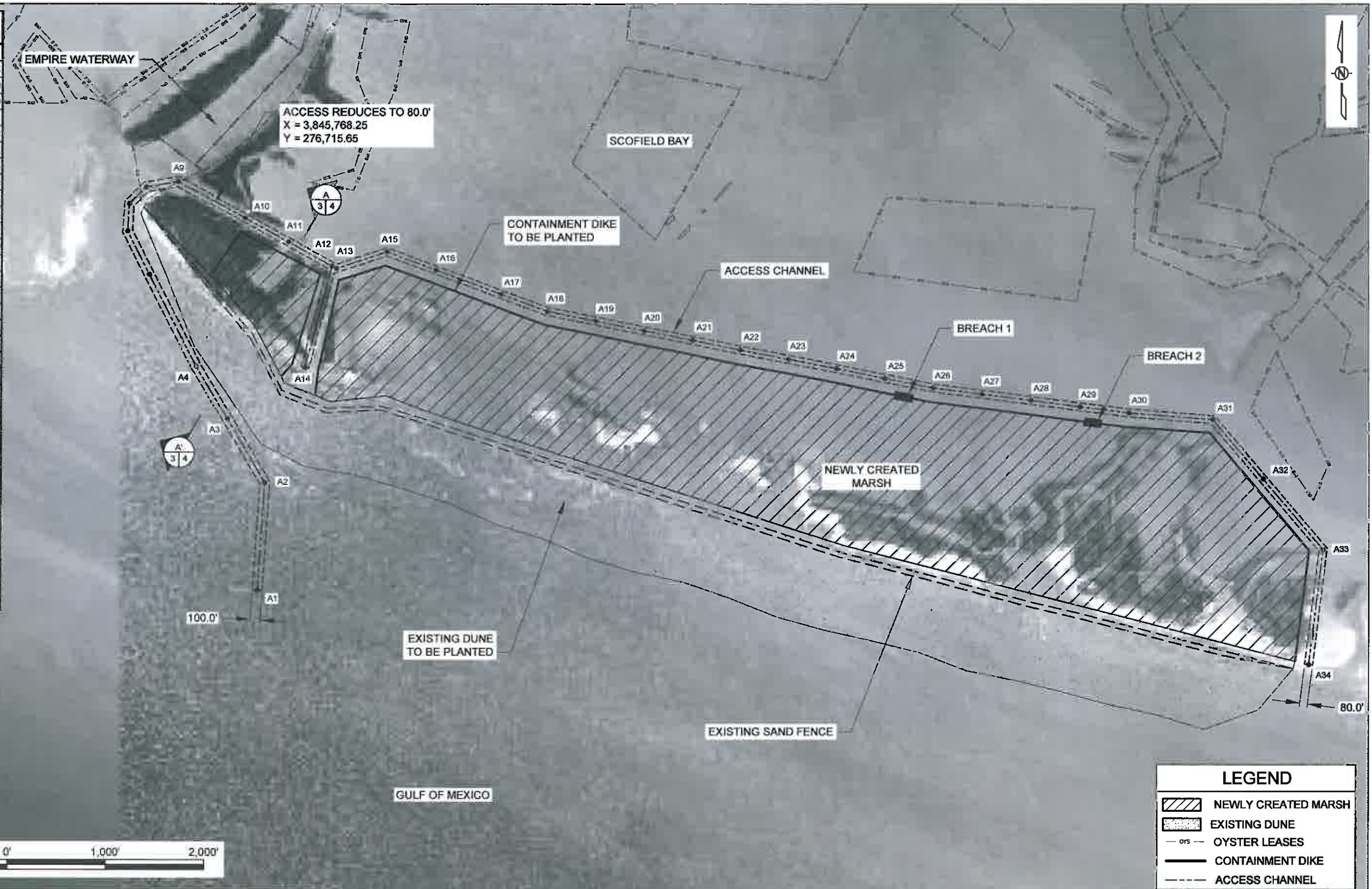
SUMMARY OF ESTIMATED QUANTITIES

ITEM NO.	DESCRIPTION	UNIT	ESTIMATED QUANTITY
1	SMOOTH CORDGRASS VEGETATION PLUG	EACH	10,000
2	BLACK MANGROVE FOUR-INCH CONTAINER	EACH	1,000
3	BITTER PANICUM FOUR-INCH CONTAINER	EACH	24,000
4	MARSHHAY GRASS FOUR-INCH CONTAINER	EACH	7,200
5	SEA OATS GALLON CONTAINER	EACH	7,200

QUANTITIES SHOWN ARE FOR BID PURPOSES ONLY AND WERE CALCULATED ACCORDING TO CONDITIONS SURVEYED IN OCTOBER 2010. THE OWNER RESERVES THE RIGHT TO ADJUST QUANTITIES HIGHER OR LOWER WITHOUT ADJUSTMENT OF THE UNIT PRICE.

				COASTAL PROTECTION AND RESTORATION AUTHORITY		SCOFIELD ISLAND RESTORATION VEGETATIVE PLANTINGS PROJECT		GENERAL NOTES	
				450 LAUREL STREET BATON ROUGE, LOUISIANA 70801					
						STATE PROJECT NUMBER: BA-40			
						FEDERAL PROJECT NUMBER: N/A		DATE: AUGUST 2013	
				DRAWN BY: SHANE FAUST		DESIGNED BY: SHANE FAUST		APPROVED BY: SHANNON HAYNES, P.E.	
REV.	DATE	DESCRIPTION	BY					SHEET 2 OF 4	

ACCESS CHANNEL CENTERLINE COORDINATES		
POINT	NORTHING	EASTING
A1	272,759.95	3,846,211.08
A2	273,857.47	3,846,282.70
A3	274,508.96	3,845,897.70
A4	275,042.48	3,845,582.41
A5	275,977.56	3,845,103.30
A6	276,418.37	3,844,882.12
A7	276,896.72	3,844,898.03
A8	276,863.74	3,845,065.15
A9	276,919.41	3,845,391.42
A10	276,550.75	3,846,073.22
A11	276,308.80	3,846,514.40
A12	276,062.00	3,846,957.09
A13	276,036.65	3,847,002.94
A14	275,028.46	3,846,686.92
A15	276,206.37	3,847,515.44
A16	276,021.56	3,848,014.74
A17	275,774.86	3,848,680.43
A18	275,600.97	3,849,152.98
A19	275,503.93	3,849,643.86
A20	275,405.04	3,850,134.30
A21	275,308.53	3,850,625.30
A22	275,210.21	3,851,115.88
A23	275,115.84	3,851,607.39
A24	275,019.46	3,852,098.43
A25	274,920.66	3,852,588.89
A26	274,823.41	3,853,079.72
A27	274,759.73	3,853,578.56
A28	274,695.40	3,854,077.24
A29	274,630.16	3,854,575.70
A30	274,566.13	3,855,074.45
A31	274,499.70	3,855,573.78
A32	273,891.79	3,859,455.70
A33	273,177.28	3,857,065.82
A34	272,005.90	3,856,920.66



LEGEND	
	NEWLY CREATED MARSH
	EXISTING DUNE
	OYSTER LEASES
	CONTAINMENT DIKE
	ACCESS CHANNEL

- NOTES:
- EXACT LOCATION OF ALL PLANTS SHALL BE DETERMINED ON SITE BY THE ENGINEER DURING PRE-CONSTRUCTION LAYOUT.
 - ALL DISTANCE MEASUREMENTS SHOWN ON THE PLANS ARE APPROXIMATE.
 - NO EQUIPMENT MAY ALTER THE EXISTING CONDITIONS OF THE NEWLY CREATED MARSH OR DUNE PLATFORMS OR DISTURB EXISTING VEGETATION.
 - CONTRACTOR MUST AVOID ALL OYSTER LEASES. ACCESS TO THE NORTH SIDE OF THE ISLAND IS LIMITED TO THE 80'-100' WIDE ACCESS CHANNEL AS SHOWN ON THE PLANS.

REV.	DATE	DESCRIPTION	BY

COASTAL PROTECTION AND RESTORATION AUTHORITY
 450 LAUREL STREET
 BATON ROUGE, LOUISIANA 70801

DRAWN BY: SHANE FAUST DESIGNED BY: SHANE FAUST

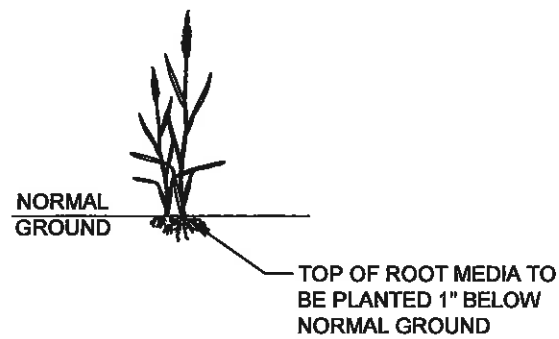
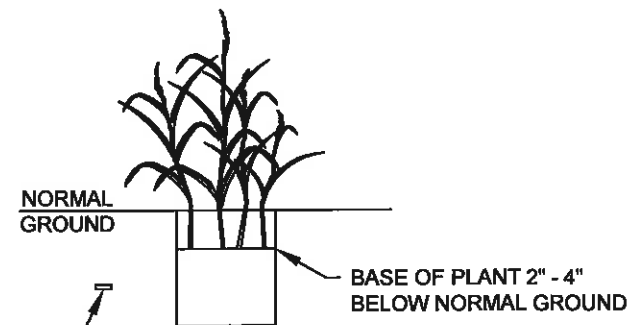
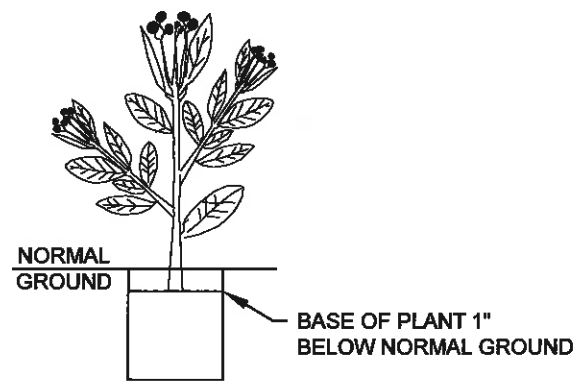
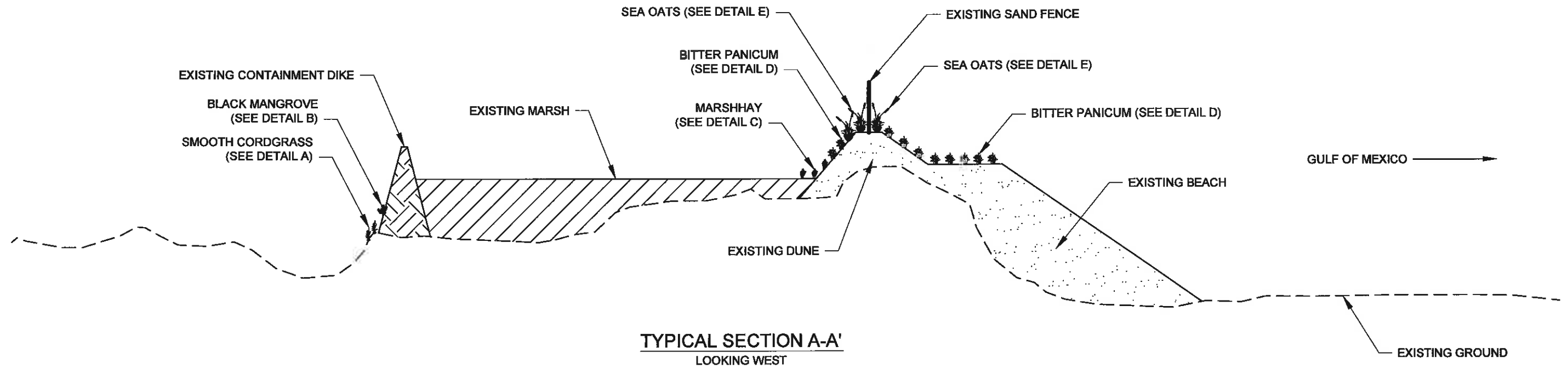
SCOFIELD ISLAND RESTORATION VEGETATIVE PLANTINGS PROJECT

STATE PROJECT NUMBER: BA-40
 FEDERAL PROJECT NUMBER: N/A

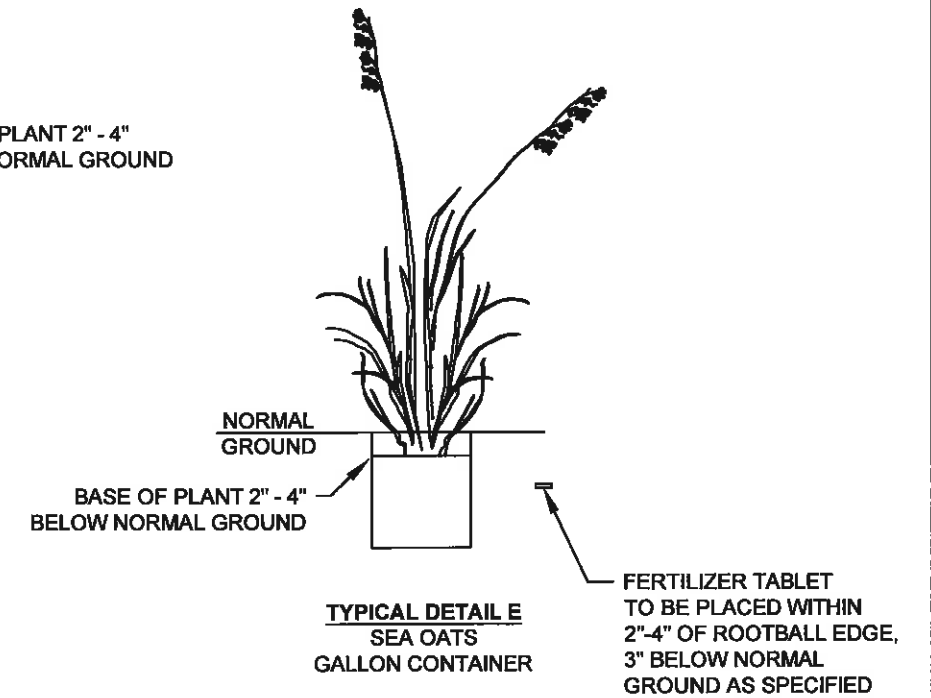
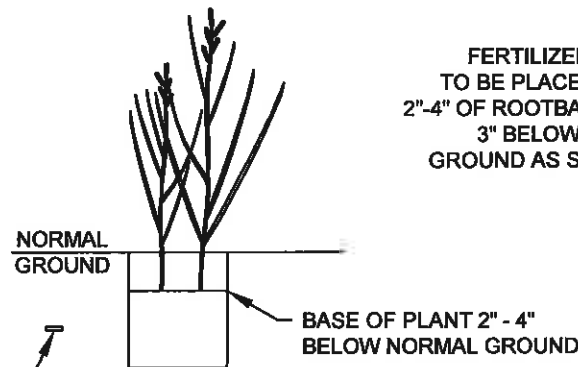
APPROVED BY: SHANNON HAYNES, P.E.

PROJECT LAYOUT

DATE: AUGUST 2013
 SHEET 3 OF 4



TYPICAL DETAIL B
BLACK MANGROVE
4" CONTAINER



- NOTES:**
1. BLACK MANGROVE, MARSHHAY CORDGRASS, BITTER PANICUM, AND SEA OAT PLANTS ON THE DUNE SHALL BE PLANTED ON FIVE (5) FOOT CENTERS WITH ROWS TEN (10) FOOT APART.
 2. SMOOTH CORDGRASS PLANTS ON THE CONTAINMENT DIKE SHALL BE PLANTED ON THREE (3) FOOT CENTERS WITH ROWS THREE (3) FOOT APART.
 3. LOCATIONS OF PLANT ROWS ARE APPROXIMATE. SPECIES LOCATIONS ARE SUBJECT TO CHANGE DUE TO SITE CONDITIONS AND/OR CONSTRUCTION VARIABLES.

REV.	DATE	DESCRIPTION	BY

COASTAL PROTECTION AND RESTORATION AUTHORITY

450 LAUREL STREET
BATON ROUGE, LOUISIANA 70801

DRAWN BY: SHANE FAUST

DESIGNED BY: SHANE FAUST

SCOFIELD ISLAND RESTORATION
VEGETATIVE PLANTINGS PROJECT

STATE PROJECT NUMBER: BA-40

FEDERAL PROJECT NUMBER: N/A

APPROVED BY: SHANNON HAYNES, P.E.

TYPICAL SECTION &
DETAILS

DATE: AUGUST 2013

SHEET 4 OF 4