

INCIDENT ACTION PLAN

Be brief and concise with your entries

Location	Control Level	Operational Period
Bayou Corne Sink Hole	Company Supervisory	8/23/12 From 07:00 To 18:00

1.0 SITUATION Disease, community, environment PROMPTS: Weather, disease trends, Resources, Hazards & safety REFERENCE: Maps, weather reports, Sitreps, appreciation, warnings, alerts	<p>CURRENT Sunny @ 08:00</p> <hr/> <p>PREDICTED Isolated thunderstorms</p>
2.0 OBJECTIVES (or MISSION) PROMPTS: Time & space REFERENCE: Appreciation – control options, courses open to disease	<p>CURRENT Objective 1 - Gas Monitoring:</p> <p>6 Gas Monitors have been set up in the field and are obtaining data on a continuous basis. (See Attached Map for Locations)</p> <p>The monitors are running on batteries which must be changed out every morning. Three monitors are located in the swamp and are required to be reached via airboats launched from TBC facilities.</p> <p>The continuous monitoring data is collected at an office trailer located at Texas Brine Grand Bayou Facility. Monitoring the information on a 24 hours basis.</p> <p>Monitoring is being recorded for LEL, VOC, H2S and O2.</p> <p>Sink hole observation map. See attached</p> <p>Elevation survey taking place Monday, Wednesday, and Friday.</p> <p>Objective 2- Installation of Tilt meters. See attached IAP</p> <p>Objective 3 – Surface water salinity Monitoring. See Attached IAP.</p>

	<div data-bbox="500 306 678 342" data-label="Text"> <p>ALTERNATE</p> </div>
<div data-bbox="175 506 797 548" data-label="Section-Header"> <h3>3.0 EXECUTION <small>add safety information as appropriate</small></h3> </div>	
<div data-bbox="175 594 461 630" data-label="Section-Header"> <h4>GENERAL OUTLINE</h4> </div> <div data-bbox="175 655 427 730" data-label="Text"> <p>PROMPTS: Strategies & tactics (current/proposed/alternate)</p> </div> <div data-bbox="175 745 440 798" data-label="Text"> <p>REFERENCE: Appreciation, Control Options</p> </div>	<div data-bbox="492 606 1435 886" data-label="Text"> <p>Safety Information: See Attached Safe Work Rules Reference IAP dated 8/9/12 Additional to our Safe Work Rules for this project we are adding the awareness of insects, reptiles and animals. Inspect location for flammability Daily Safety Meetings PPE Required on site: Respirator w/ VOC Cartridge, Gloves for sampling, eye protection, life preservers, hearing protection.</p> </div>
<div data-bbox="175 1108 357 1144" data-label="Section-Header"> <h4>GROUPINGS</h4> </div>	<div data-bbox="492 1123 532 1159" data-label="Text"> <p>NA</p> </div>
<div data-bbox="175 1331 363 1392" data-label="Text"> <p>TASKS Including PR & Media</p> </div>	<div data-bbox="492 1331 704 1367" data-label="Text"> <p>Same as above</p> </div>
<div data-bbox="175 1541 401 1610" data-label="Section-Header"> <h4>COORDINATING INSTRUCTIONS</h4> </div> <div data-bbox="175 1631 401 1707" data-label="Text"> <p>PROMPTS: Timings, routes, assembly areas, staging areas</p> </div>	<div data-bbox="492 1541 1377 1583" data-label="Text"> <p>Texas Brine Grand Bayou Facility will be used as staging area.</p> </div>
<div data-bbox="175 1787 782 1831" data-label="Section-Header"> <h3>4.0 ADMINISTRATION (Logistics support)</h3> </div> <div data-bbox="175 1860 1421 1913" data-label="Text"> <p>PROMPTS: Unit names, locations, contact names, phone no's, timings, duties/tasks, routes, suppliers, quantities, status (required, organised, stand by, enroute)</p> </div>	

SUPPLY WHO, WHAT, WHERE, WHEN of resources not readily available	NA
GROUND SUPPORT Transport of personnel, traffic mgt, refuelling, mechanical repair/maintenance	NA
COMMUNICATIONS Installation, maintenance, technical advice	Cell Phone & Landline Communications: Kenneth Blanchard – Area Manager – 985- () (985-) kblanchard@texasbrine.com Scott Borne – Facility Manager – 985- () (985-) sborne@texasbrine.com Joel Miller, PE – Consultant – 337- () (337-) joel.miller@cox- internet.com Bruce Martin – Operations/PR – 713- () (281-) bmartin@texasbrine.com Mark Cartwright – Technical/Engineering – 713- () (281-) mcartwright@unitedbrine.com Scott Whitelaw – Environmental/Safety – 713- () (713-) swhitelaw@tum.com
STAGING AREA/ FCP Setting up, communications, staffing	Texas Brine Grand Bayou Facility 1301 Hwy 70 South, Belle Rose, La 70341
5.0 ADMINISTRATION (Logistics services) PROMPTS: Unit names, locations, contact names, phone no's, timings, duties/tasks, routes, suppliers, quantities, status (required, organised, stand by, enroute)	
FACILITIES Security, waste, cleaning	NA
CATERING	NA
OH&S/MEDICAL Medical plan, first aid plan	Call 911
FINANCE	NA
TRAVEL	NA
INDUCTION/	NA

TRAINING	
ACCOMMODATION	NA
6.0 CONTROL, COORDINATION & COMMUNICATION	
CONTROL & COORDINATION STRUCTURE <small>REFERENCE Structural Chart</small>	Plant Management Supervision / Contractor Work
COORDINATION & LIAISON <small>Local knowledge, police, agency reps, emergency mgt reps</small>	NA
COMMUNICATIONS <small>PROMPTS Communications structure, operational comms plan, information mgt</small>	Plant Management – Contractor Communication via Cell Phone

EXTRAS	
Attachments <small>PROMPTS:: maps, weather, organisational charts, resources, comms diagram</small>	Site Map Current Weather Safe Work Rules Safety Training Log
Plan developers <small>PROMPTS PO, Logs Mgr, Controller</small>	NA
Approval <small>Controller, Ops Director</small>	TBC Company Rep: <i>Scott Borne</i> FOSC: SOSC: POSC:

INCIDENT BRIEFING

1. Incident Name

Grand Bayou Corne Sink Hole

2. Date

8/23/2012

3. Time

07:00-18:00

4. Map Sketch

5. Current Organization

Command

Bruce Martin

Safety Officer:

Liaison Officer or Agency Rep.

Information Officer:

Planning/Intelligence

Mark Cartwright

Operations

Ken Blanchard

Logistics

Scott Borne

Finance/Administration

Becky Ladet

Div.

Div. Environmental

Scott Whitelaw

Div. Safety

Scott Whitelaw

Div. Security

Mike Kleinpeter

Air

Air Operations

Air Support

Air Attack

Air Tanker Coord.

Helicopter Coord.

6. Resources Summary

Resources Ordered	Resource Identification	ETA	On Scene	Location/Assignment

7. Summary of Current Actions

Continuous air monitoring around the sink hole.
Installation of inclinometers.
Surface water slinity monitoring.

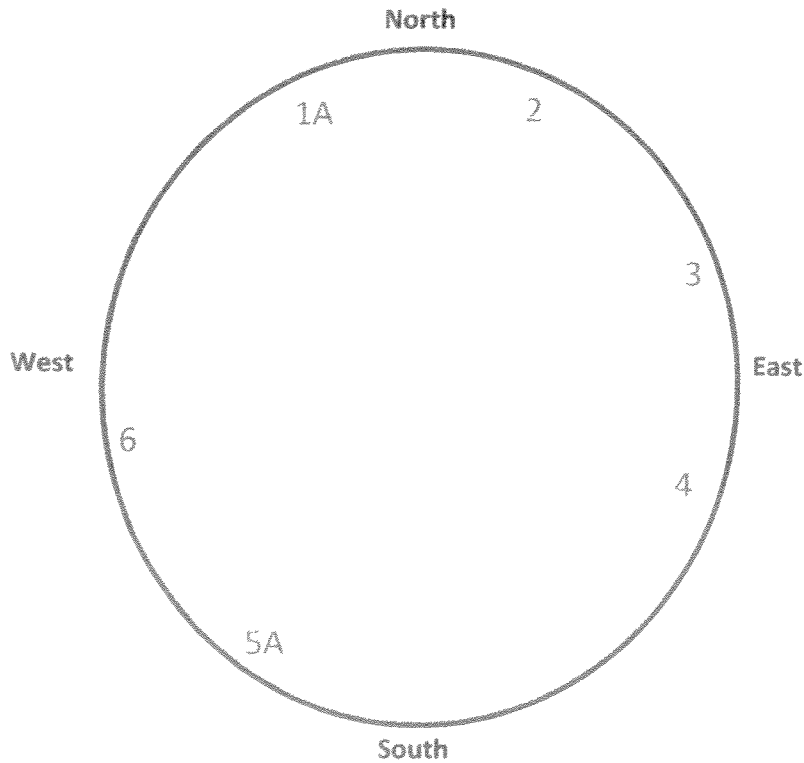
INCIDENT OBJECTIVES	1. Incident Name Bayou Corne Sink Hole	2. Date 8/23/12	3. Time 07:00
4. Operational Period 07:00 - 17:00 Every Day			
5. General Control Objectives for the Incident (include alternatives) Management Objectives Monitor air around sink hole for LEL, VOC, Oxygen, CO, and H2S Installation of inclinometers Surface water salinity monitoring Operational Objectives : Same as above			
6. Weather Forecast for Period			
7. General Safety Message			
8. Attachments (mark if attached)			
<input type="checkbox"/> Organization List - ICS 203 <input type="checkbox"/> Medical Plan - ICS 206 <input type="checkbox"/> (Other) <input type="checkbox"/> Div. Assignment Lists - ICS 204 <input type="checkbox"/> Incident Map <input type="checkbox"/> <input type="checkbox"/> Communications Plan - ICS 205 <input type="checkbox"/> Traffic Plan <input type="checkbox"/>			
9. Prepared by (Planning Section Chief)		10. Approved by (Incident Commander)	

ORGANIZATION ASSIGNMENT LIST					
1. Incident Name		4. S 203 Operations Section			
Bayou Corne Sink Hole		Op's Chief			
2. Date	3. Time	Deputy			
8/23/12	06:00 - 18:00	a. Branch I			
4. Operational Period		Branch Director			
Everyday		Deputy			
Position	Name		Division/Group		
5. Incident Commander and Command Staff		Division/Group			
Incident Commander	Mark Cartwright		Division/Group		
Deputy	Kenneth Blanchard		Division/Group		
Safety Officer	Scott Whitelaw		Division/Group		
Information Officer	Bruce Martin		Division/Group		
Liaison Officer	Scott Borne		Staging Area		
6. Agency Representative		b. Branch II			
Agency	Name		Branch Director		
			Deputy		
			Division/Group		
			Division/Group		
			Division/Group		
			Division/Group		
			Division/Group		
			Staging Area		
7. Planning/Intelligence Section		c. Branch III			
Plans/Intel Chief			Branch Director		
Deputy			Deputy		
Resources Unit			Division/Group		
Situation Unit			Division/Group		
Documentation Unit			Division/Group		
Demobilization Unit			Division/Group		
Technical Specialists			Division/Group		
Human Resources			Division/Group		
Training			d. Air Operations Branch		
GIS			Air Operations Branch Director		
			Air Tactical Supervisor		
			Air Support Supervisor		
			Helicopter Coordinator		
			Air Tanker Coordinator		
8. Logistics Section		10. Finance/Administration Section			
Logistics Chief			Finance/Admin. Chief		
Deputy			Deputy		
Supply Unit			Time Unit		
Facilities Unit			Procurement Unit		
Ground Support Unit			Compensation/Claims Unit		
Communications Unit			Cost Unit		
Medical Unit					
Food Unit					

Bayou Corne Sinkhole

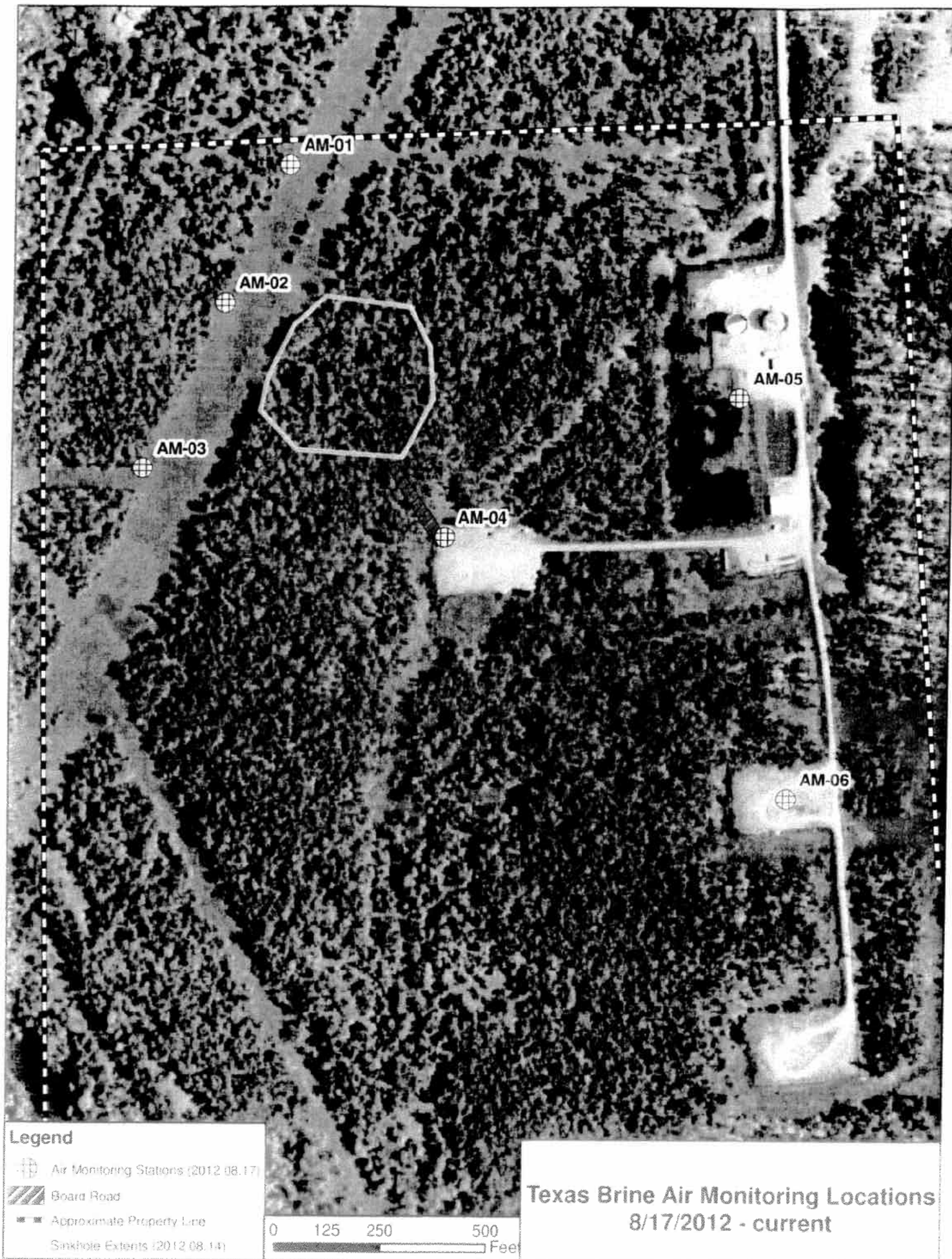
Date and Time: 8-22-12 / 8-23-12

	Time 7:00 p.m.	Time 10:00 p.m.	Time 1:00 a.m.	Time 4:00 a.m.
Tree 1	OK	OK	OK	OK
Tree 2	OK	OK	OK	OK
Tree 3	OK	OK	OK	OK
Tree 4	OK	OK	OK	OK
Tree 5	OK	OK	OK	OK
Tree 6	OK	OK	OK	OK



NOTE: Coordinates for each tree are forth coming.

By: Austin Burton
Austin Burton



MILLER ENGINEERS & ASSOCIATES, INC.
CONSULTING ENGINEERS & LAND SURVEYORS
FRANKLIN, CA.

OXY #5 MONUMENT

1" = 400'

NOTE:

PROPERTY & LEASE LINES ARE APPROXIMATE ONLY.
THIS SKETCH DOES NOT REPRESENT A PROPERTY
BOUNDARY SURVEY.

OXY #4 MONUMENT

T.B.M. 6

APPROX. EDGE
OF SLURRY PIT
8/4/12

T.B. WATER SAMPLES

WELL 1

TANK "W"

TANK "E"

T.B.M. 1

WATER WELL

T.B.M. 3A

T.B.M. 3C

WATER WELL 5

WATER WELL 2

T.B.M. 2

WELL 3

T.B.M. 3

WELL 2

T.B.M. 5

T.B.M. 3B

TBC LEASE LINE

WELL 9

GPS BASE

WELL 10

REFERENCE PT.

OXY GPS #4

T.B.M. 4

TEXAS BRINE COMPANY, LLC AND AFFILIATED COMPANIES

Safe Work Practices

UNDERGROUND

STORAGE, LLC



UNITEDBRINE
PIPELINE COMPANY

UNITEDBRINE
PIPELINE COMPANY

TEXAS BRINE COMPANY, LLC

UNDERGROUND

SERVICES MARKHAM, LP



RESPONSIBLE CARE

American
Chemistry
Council



68°F Napoleonville, Louisiana

Enter City, State, Country or U.S. Zip code or Airport Id

Local Weather

[Local](#) [National](#) [Global](#) [Storms](#) [Health](#) [Travel](#) [Community](#) [Forecast](#) [Current](#) [Radar](#) [Satellite](#) [wxMap](#) [iNav](#)

Weather Report

Home » Local » Weather Report

Napoleonville, Louisiana

[Weather Report](#) | [Interactive Weather Map](#) | [Extended Forecast](#) | [Hourly Forecast](#) | [Past Observations](#) | [Historic Averages](#) | [Related](#)

Current Conditions - °F | °C

As of 6:50 AM on Thursday 23 Aug 2012 (Local Time) from KHUM Reporting Station



Haze

68°F

Feels Like: 68°

Wind Chill: 68° Ceiling: Unl
 Heat Index: 68° Visibility: 6mi
 Dew Point: 68° Wind: 3mph
 Humidity: 100% Direction: 360° (N)
 Pressure: 30.06" Gusts: NA

Report Text: KHUM 231150Z 36003KT 6SM BR SCT060 20/20 A3006

Today's Forecast

8 AM
Sunny 75°

9 AM
Sunny 80°

10 AM
Sunny 84°

Local Information


No Weather Alerts
for this location

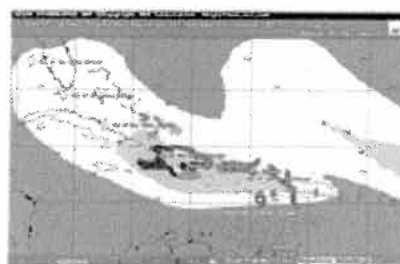
[View Detailed Observations for the last 48 Hours](#) · [14 Days](#)
[View Complete Hourly Forecast »](#)
[Radar](#) · [Satellite](#) · [Surface Analysis](#)

Tropical Storm Tracking

Tropical Depression Ten


[Current Track](#) | [Visible](#) | [Infrared](#)

Tropical Storm Isaac


[Current Track](#) | [Visible](#) | [Infrared](#)
[View Complete Tropical Storm Track List »](#)
New Forecast Map Updates
Plan your seasonal activities better
[Click here to learn more...](#)

10 Day Forecast - °F | °C

[View the Detailed Extended Forecast »](#)

thu	fri	sat	sun	mon	tue	wed	thu	fri	sat
aug 23	aug 24	aug 25	aug 26	aug 27	aug 28	aug 29	aug 30	aug 31	sep 01
Sunny	Iso T-Storms	Sct T-Storms	Iso T-Storms	Sunny	P Cloudy	Iso T-Storms	P Cloudy	Sct T-Storms	Sct T-Storms
89° 71°	85° 73°	87° 74°	88° 74°	92° 74°	93° 75°	90° 73°	88° 73°	88° 73°	90° 72°

Details for Thursday, August 23

Sunny. High 89F. Winds E at 5 to 10 mph.

Evening: A few passing clouds. Low 71F. Winds light and variable.

UV Index: 11 (Extreme)

Relative Humidity: 65%

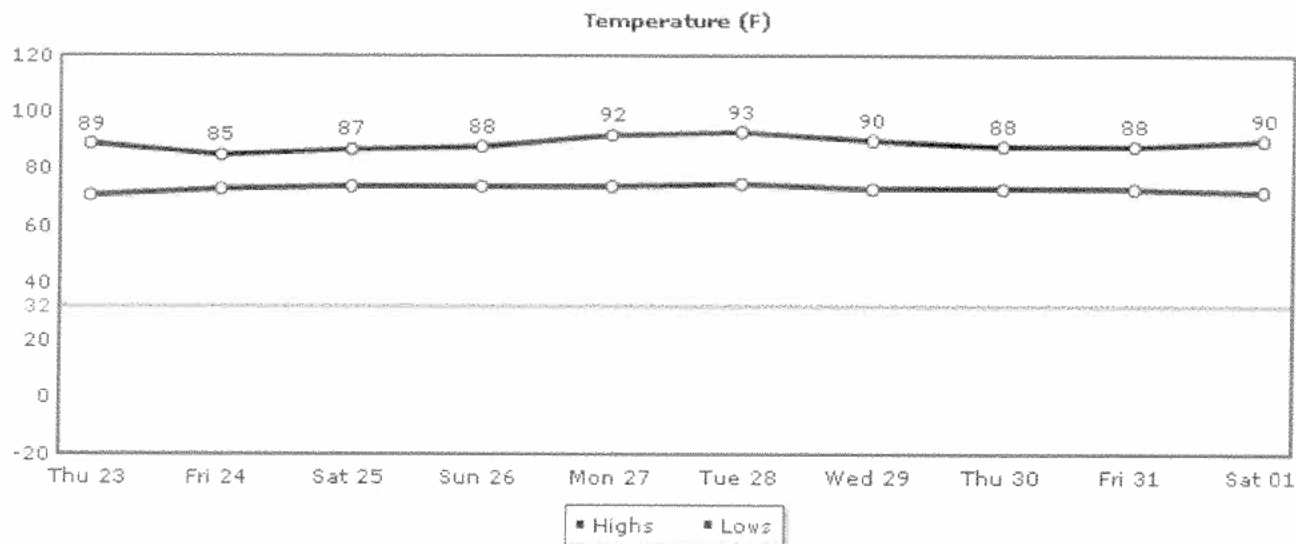
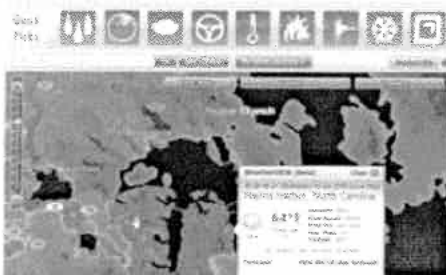
Precipitation: 10%

Snow: 0%

Cloud Coverage: 8%

Sunrise: 6:36 AM**Sunset:** 7:36 PM**Moonrise:** 12:49 PM**Moonset:** 11:40 PM**Moonphase:**

Waxing Crescent

**Direction:** E (101°)**Speed:** 8Mph(12Km, 6Kts)**Daily Forecast Chart****Chart Options:** Temperature ▾
[Temperature](#)
[UV Index](#)
[Relative Humidity](#)
[Precipitation](#)
[Snow](#)
[Clouds](#)
[Wind](#)
[Daily Forecast](#)
[Hourly Forecast](#)
[Past Observations](#)
[Historic Averages](#)
More from Intellicast

Check Out Our
Interactive Weather Map

Articles

- [Local Weather Maps](#)
- [US Weather Maps](#)
- [US Current Weather](#)
- [Global Weather Maps](#)
- [Weather Analysis Charts](#)
- [Active Storm Track](#)
- [Weather Tools](#)

Weather Center**Weather Alerts**

Current National Weather Service Watches and Warnings by type and state throughout the United States.

**Ski & Snow**

The Ski & Snow Section is where you can get the latest ski resort conditions and snow forecasts.