

INCIDENT ACTION PLAN

Be brief and concise with your entries

Location Bayou Corne Sink Hole	Control Level Company Supervisory	Operational Period 8/24/12 From 07:00 To 18:00
---	--	---

1.0 SITUATION Disease, community, environment PROMPTS: Weather, disease trends, Resources, Hazards & safety REFERENCE: Maps, weather reports, Sitreps, appreciation, warnings, alerts	CURRENT Sunny @ 08:00 PREDICTED Isolated thunderstorms
2.0 OBJECTIVES (or MISSION) PROMPTS: Time & space REFERENCE: Appreciation – control options, courses open to disease	CURRENT Objective 1 - Gas Monitoring: 6 Gas Monitors have been set up in the field and are obtaining data on a continuous basis. (See Attached Map for Locations) The monitors are running on batteries which must be changed out every morning. Three monitors are located in the swamp and are required to be reached via airboats launched from TBC facilities. The continuous monitoring data is collected at an office trailer located at Texas Brine Grand Bayou Facility. Monitoring the information on a 24 hours basis. Monitoring is being recorded for LEL, VOC, H2S and O2. Sink hole observation map. See attached Elevation survey taking place Monday, Wednesday, and Friday. Objective 2- Installation of inclinometer. See attached IAP Objective 3- Surface water salinity monitoring. See attached IAP

	ALTERNATE
3.0 EXECUTION add safety information as appropriate	
GENERAL OUTLINE PROMPTS: Strategies & tactics (current/proposed/alternate) REFERENCE: Appreciation, Control Options	Safety Information: See Attached Safe Work Rules Reference IAP dated 8/9/12 Additional to our Safe Work Rules for this project we are adding the awareness of insects, reptiles and animals. Inspect location for flammability Daily Safety Meetings PPE Required on site: Respirator w/ VOC Cartridge, Gloves for sampling, eye protection, life preservers, hearing protection.
GROUPINGS	NA
TASKS Including PR & Media	Same as above
COORDINATING INSTRUCTIONS PROMPTS: Timings, routes, assembly areas, staging areas	Texas Brine Grand Bayou Facility will be used as staging area.
4.0 ADMINISTRATION (Logistics support)	

PROMPTS: Unit names, locations, contact names, phone no's, timings, duties/tasks, routes, suppliers, quantities, status (required, organised, stand by, enroute)

SUPPLY WHO, WHAT, WHERE, WHEN of resources not readily available	NA
GROUND SUPPORT Transport of personnel, traffic mgt, refuelling, mechanical repair/maintenance	NA
COMMUNICATIONS Installation, maintenance, technical advice	Cell Phone & Landline Communications: Kenneth Blanchard – Area Manager – 985-██████ (985-██████) kblanchard@texasbrine.com Scott Borne – Facility Manager – 985-██████ (985-██████) sborne@texasbrine.com Joel Miller, PE – Consultant – 337-██████ (337-██████) joel.miller@cox- internet.com Bruce Martin – Operations/PR – 713-██████ (281-██████) bmartin@texasbrine.com Mark Cartwright – Technical/Engineering – 713-██████ (281-██████) mcartwright@unitedbrine.com Scott Whitelaw – Environmental/Safety – 713-██████ (713-██████) swhitelaw@tum.com
STAGING AREA/ FCP Setting up, communications, staffing	Texas Brine Grand Bayou Facility 1301 Hwy 70 South, Belle Rose, La 70341
5.0 ADMINISTRATION (Logistics services) PROMPTS: Unit names, locations, contact names, phone no's, timings, duties/tasks, routes, suppliers, quantities, status (required, organised, stand by, enroute)	
FACILITIES Security, waste, cleaning	NA
CATERING	NA
OH&S/MEDICAL Medical plan, first aid plan	Call 911
FINANCE	NA
TRAVEL	NA

INDUCTION/ TRAINING	NA
ACCOMMODATION	NA
6.0 CONTROL, COORDINATION & COMMUNICATION	
CONTROL & COORDINATION STRUCTURE REFERENCE Structural Chart	Plant Management Supervision / Contractor Work
COORDINATION & LIAISON Local knowledge, police, agency reps, emergency mgt reps	NA
COMMUNICATIONS PROMPTS Communications structure, operational comms plan, information mgt	Plant Management – Contractor Communication via Cell Phone

EXTRAS	
Attachments PROMPTS: maps, weather, organisational charts, resources, comms diagram	Site Map Current Weather Safe Work Rules Safety Training Log
Plan developers PROMPTS PO, Logs Mgr, Controller	NA
Approval Controller, Ops Director	TBC Company Rep: <i>Scott Byrne</i> FOSC: SOSC: POSC:

INCIDENT BRIEFING

1. Incident Name

Grand Bayou Corne Sink Hole

2. Date

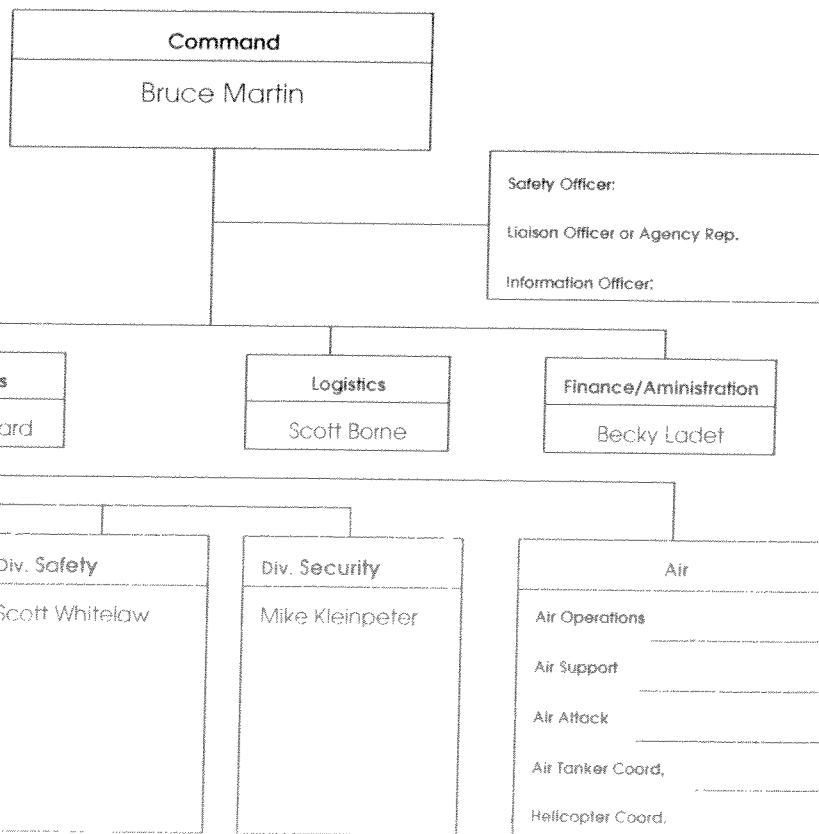
8/24/2012

3. Time

07:00-18:00

4. Map Sketch

5. Current Organization



6. Resources Summary

Resources Ordered	Resource Identification	ETA	On Scene	Location/Assignment

7. Summary of Current Actions

Continuous air monitoring around the sink hole.
Installation of inclinometer hardware.

ORGANIZATION ASSIGNMENT LIST			
1. Incident Name		4. S 203	
Bayou Corne Sink Hole		Operations Section	
2. Date		Op's Chief	
8/24/12		Deputy	
3. Time		a. Branch I	
06:00 - 18:00		Branch Director	
4. Operational Period		Deputy	
Everyday		Division/Group	
Position		Division/Group	
Name		Division/Group	
5. Incident Commander and Command Staff			
Incident Commander		Division/Group	
Mark Cartwright		Division/Group	
Deputy		Division/Group	
Kenneth Blanchard		Division/Group	
Safety Officer		Division/Group	
Scott Whitelaw		Division/Group	
Information Officer		Staging Area	
Bruce Martin			
Liaison Officer			
Scott Borne			
6. Agency Representative			
Agency		b. Branch II	
Name		Branch Director	
		Deputy	
		Division/Group	
		Division/Group	
		Division/Group	
		Division/Group	
		Division/Group	
		Division/Group	
		Staging Area	
7. Planning/Intelligence Section			
Plans/Intel Chief		c. Branch III	
Deputy		Branch Director	
Resources Unit		Deputy	
Situation Unit		Division/Group	
Documentation Unit		Division/Group	
Demobilization Unit		Division/Group	
Technical Specialists		Division/Group	
Human Resources		Division/Group	
Training		d. Air Operations Branch	
GIS		Air Operations Branch Director	
		Air Tactical Supervisor	
		Air Support Supervisor	
		Helicopter Coordinator	
		Air Tanker Coordinator	
8. Logistics Section			
Logistics Chief		10. Finance/Administration Section	
Deputy		Finance/Admin. Chief	
Supply Unit		Deputy	
Facilities Unit		Time Unit	
Ground Support Unit		Procurement Unit	
Communications Unit		Compensation/Claims Unit	
Medical Unit		Cost Unit	
Food Unit			

MILLER ENGINEERS & ASSOCIATES, INC.
CONSULTING ENGINEERS & LAND SURVEYORS
FRANKLIN, LA.

OXY #5 MONUMENT

1" = 400'

NOTE:

PROPERTY & LEASE LINES ARE APPROXIMATE ONLY.
THIS SKETCH DOES NOT REPRESENT A PROPERTY
BOUNDARY SURVEY.

OXY #4 MONUMENT

APPROX. EDGE
OF SLURRY PIT
8/4/12

TB
WATER SAMPLES

WELL 1

TANK "W"

TANK "E"

WATER WELL 1

T.B.M. 3A

WATER WELL 5

WATER WELL 2

T.B.M. 3C

WELL 3

T.B.M. 3

WELL 2

T.B.M. 2

T.B.M. 5

T.B.M. 3B

TBC LEASE LINE

WELL 9

GPS BASE

WELL 10

REFERENCE PT.

OXY GPS #4

T.B.M. 4

Bayou Corne Sinkhole

Date and Time:

8-23-13 / 8-24-13

Time

7:00 p.m.

Time

10:00 p.m.

Time

1:00 a.m.

Time

4:00 a.m.

Tree 1

OK

OK

OK

OK

Tree 2

OK

0A

OK

65

Tree 3

OK

OK

OK

25

Tree 4

OK

OK

13

Tree 5

51

OK

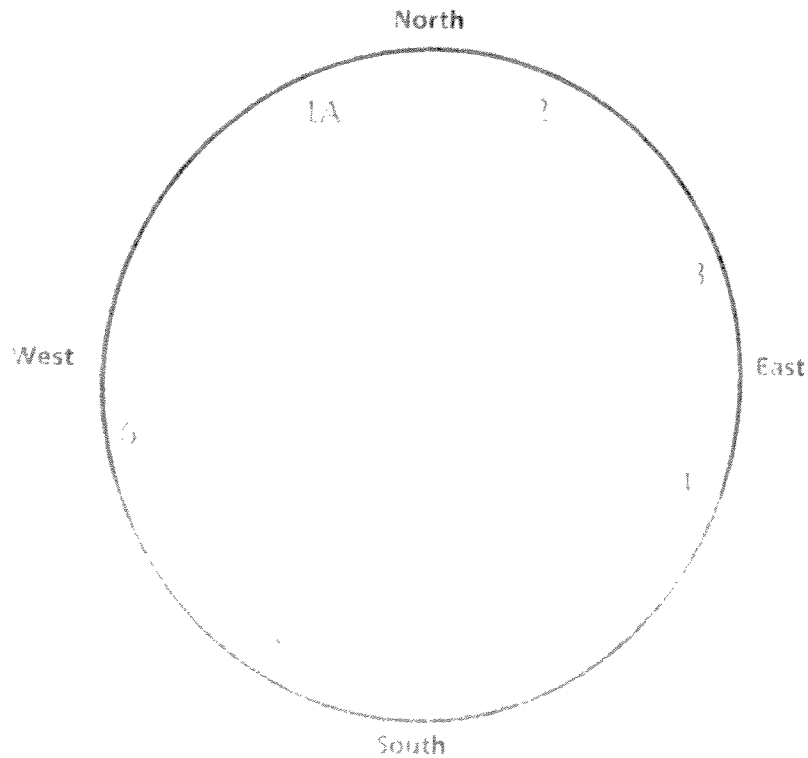
24

Tree 6

OK

65

六











TEXAS BRINE COMPANY, LLC AND AFFILIATED COMPANIES

Safe Work Practices

UNDERGROUND
STORAGE, LLC



UNITEDBRINE
PARTNERSHIP

UNITEDBRINE
PARTNERSHIP

TEXAS BRINE COMPANY, LLC

UNITEDBRINE
STORAGE, LLC



RESPONSIBLE CARE

American
Chemistry
Council

Universal Time: 09:55 18 Aug 2012 12:37

73°F

Belle Rose, Louisiana

Home Local Weather Map | Extended Forecast | Hourly Forecast | Local Observations | History | Register | Sign In | Help | National News

Local National Global Storms Health Travel Community Forecast Current Radar Satellite wxMap iNav

Sign In Help Hurricanes Alerts

Weather Report

Home > Local > Weather Report

Belle Rose, Louisiana

Weather Report | Interactive Weather Map | Extended Forecast | Hourly Forecast | Local Observations | History | Register | Sign In | Help | National News

Current Conditions - °F | °C

As of 8:01 AM on Friday, 24 Aug 2012 (Local Time) from NWS Reporting Station

Scattered Clouds

73°F
Feels Like: 73°F

Wind Chill: 73°F	Dew Point: 72°F	Wind: 10 mph
Heat Index: 73°F	Relative Humidity: 73%	Clouds: 70% (ENE)
Dew Point: 72°F	Pressure: 30.02"	Gusts: NA

Report Text: KRTR 111532 AUTO 0700 KT 100M SCT100
1102 43002 RPK A02 SUP1MS T0280222 19234 70218 53007
1560

View Detailed Observations for the last 48 hours - 14 days

Today's Forecast

8 AM	P Cloudy	77°
9 AM	P Cloudy	81°
10 AM	P Cloudy	84°

View Complete Hourly Forecast

Local Information



No Weather Alerts for this location

Radar | Satellite | Surface Analysis

Tropical Storm Tracking

Tropical Depression Joyce



Current Track | Visible | Infrared

Tropical Storm Isaac



Current Track | Visible | Infrared

View Complete Tropical Storm Track List

10 Day Forecast Map Updates

Plan your seasonal activities better

Weather.com



10 Day Forecast - °F | °C

View the Detailed Extended Forecast

Aug 24	Aug 25	Aug 26	Aug 27	Aug 28	Aug 29	Aug 30	Aug 31	Sep 01	Sep 02
85° / 72°	88° / 73°	90° / 73°	92° / 74°	91° / 76°	88° / 74°	90° / 74°	88° / 75°	89° / 75°	88° / 74°

Details for Friday, August 24

Some sunshine with a thunderstorm or two possible this afternoon. High around 85F. Winds SE at 5 to 10 mph. Chance of rain 10%.

Evening: Isolated thunderstorms early, then partly cloudy after midnight. Low 70F. Winds light and variable. Chance of rain 10%.

UV Index: 11 (Extreme)	Relative Humidity: 73%	Precipitation: 0%	Snow: 0%	Cloud Coverage: 73%
------------------------	------------------------	-------------------	----------	---------------------

Sunrise: 6:37 AM

Sunset: 7:34 PM

Moonrise: 1:53 PM

Moonset: 12:01 AM



Moonphase: First Quarter

Direction: SE (140°)

Speed: 34MPH (100, 100)

Only Forecast Chart

Chart Options: Temperature



