

INCIDENT ACTION PLAN

Be brief and concise with your entries

Location	Control Level	Operational Period
Bayou Corne Sink Hole	Company Supervisory	From 8/31/12 07:00 To 9/1/12 17:00

1.0 SITUATION Disease, community, environment PROMPTS: Weather, disease trends, Resources, Hazards & safety REFERENCE: Maps, weather reports, Sitreps, appreciation, warnings, alerts	CURRENT Overcast @ 08:00
	PREDICTED 50% chance of rain
2.0 OBJECTIVES (or MISSION) PROMPTS: Time & space REFERENCE: Appreciation – control options, courses open to disease	CURRENT Objective 1 - Gas Monitoring: 6 Gas Monitors have been set up in the field and are obtaining data on a continuous basis. (See Attached Map for Locations) The monitors are running on batteries which must be changed out every morning. Three monitors are located in the swamp and are required to be reached via airboats launched from TBC facilities. The continuous monitoring data is collected at an office trailer located at Texas Brine Grand Bayou Facility. Monitoring the information on a 24 hours basis. Monitoring is being recorded for LEL, VOC, H2S and O2. Objective 2 - Elevation survey taking place Monday, Wednesday, and Friday. Objective 3 – Tilt Meters. See attached IAP

	<p>ALTERNATE</p>
<p>3.0 EXECUTION add safety information as appropriate</p>	
<p>GENERAL OUTLINE</p> <p>PROMPTS: Strategies & tactics (current/proposed/alternate)</p> <p>REFERENCE: Appreciation, Control Options</p>	<p>Safety Information: See Attached Safe Work Rules Reference IAP dated 8/9/12 Additional to our Safe Work Rules for this project we are adding the awareness of insects, reptiles and animals. Inspect location for flammability Daily Safety Meetings PPE Required on site: Respirator w/ VOC Cartridge, Gloves for sampling, eye protection, life preservers, hearing protection.</p>
<p>GROUPINGS</p>	<p>NA</p>
<p>TASKS Including PR & Media</p>	<p>Same as above</p>
<p>COORDINATING INSTRUCTIONS</p> <p>PROMPTS: Timings, routes, assembly areas, staging areas</p>	<p>Texas Brine Grand Bayou Facility will be used as staging area.</p>
<p>4.0 ADMINISTRATION (Logistics support)</p> <p>PROMPTS: Unit names, locations, contact names, phone no's, timings, duties/tasks, routes, suppliers, quantities, status (required, organised, stand by, enroute)</p>	

SUPPLY WHO, WHAT, WHERE, WHEN of resources not readily available	NA
GROUND SUPPORT Transport of personnel, traffic mgt, refuelling, mechanical repair/maintenance	NA
COMMUNICATIONS Installation, maintenance, technical advice	Cell Phone & Landline Communications: Kenneth Blanchard – Area Manager – 985- (985-) kblanchard@texasbrine.com Scott Borne – Facility Manager – 985- (985-) sborne@texasbrine.com Joel Miller, PE – Consultant – 337- (337-) joel.miller@cox- internet.com Bruce Martin – Operations/PR – 713- (281-) bmartin@texasbrine.com Mark Cartwright – Technical/Engineering – 713- (281-) mcartwright@unitedbrine.com Scott Whitelaw – Environmental/Safety – 713- (713-) swhitelaw@tum.com
STAGING AREA/ FCP Setting up, communications, staffing	Texas Brine Grand Bayou Facility 1301 Hwy 70 South, Belle Rose, La 70341
5.0 ADMINISTRATION (Logistics services) PROMPTS: Unit names, locations, contact names, phone no's, timings, duties/tasks, routes, suppliers, quantities, status (required, organised, stand by, enroute)	
FACILITIES Security, waste, cleaning	NA
CATERING	NA
OH&S/MEDICAL Medical plan, first aid plan	Call 911
FINANCE	NA
TRAVEL	NA
INDUCTION/	NA

TRAINING	
ACCOMMODATION	NA
6.0 CONTROL, COORDINATION & COMMUNICATION	
CONTROL & COORDINATION STRUCTURE <small>REFERENCE Structural Chart</small>	Plant Management Supervision / Contractor Work
COORDINATION & LIAISON <small>Local knowledge, police, agency reps, emergency mgt reps</small>	NA
COMMUNICATIONS <small>PROMPTS Communications structure, operational comms plan, information mgt</small>	Plant Management – Contractor Communication via Cell Phone

EXTRAS	
Attachments <small>PROMPTS:: maps, weather, organisational charts, resources, comms diagram</small>	Site Map Current Weather Safe Work Rules Safety Training Log
Plan developers <small>PROMPTS PO, Logs Mgr, Controller</small>	NA
Approval <small>Controller, Ops Director</small>	TBC Company Rep: FOSC: SOSC: POSC:

MILLER ENGINEERS & ASSOCIATES, INC.
CONSULTING ENGINEERS & LAND SURVEYORS
FRANKLIN, LA

OXY #5 MONUMENT

1" = 400'

NOTE:

PROPERTY & LEASE LINES ARE APPROXIMATE ONLY.
THIS SKETCH DOES NOT REPRESENT A PROPERTY
BOUNDARY SURVEY.

OXY #4 MONUMENT

APPROX. EDGE
OF SLURRY PIT
8/4/12

T.B.M. 6

T.B. WATER SAMPLES

WELL 1

TANK "W"

TANK "E"

T.B.M. 1

WATER WELL

T.B.M. 3A

T.B.M. 3C

WATER WELL 5

WATER WELL 2

T.B.M. 2

WELL 3

T.B.M. 3

WELL 2

T.B.M. 5

T.B.M. 3B

TBC LEASE LINE

WELL 9

CPS BASE

WELL 10

REFERENCE PT.

OXY GPS #4

T.B.M. 4

TEXAS BRINE COMPANY, LLC AND AFFILIATED COMPANIES

Safe Work Practices

UNDERGROUND
STORAGE, LLC



UNITEDBRINE
PIPELINE COMPANY

UNITEDBRINE
PIPELINE COMPANY

TEXAS BRINE COMPANY, LLC

UNDERGROUND
SERVICES MARKHAM, LLC



RESPONSIBLE CARE
1995-2000

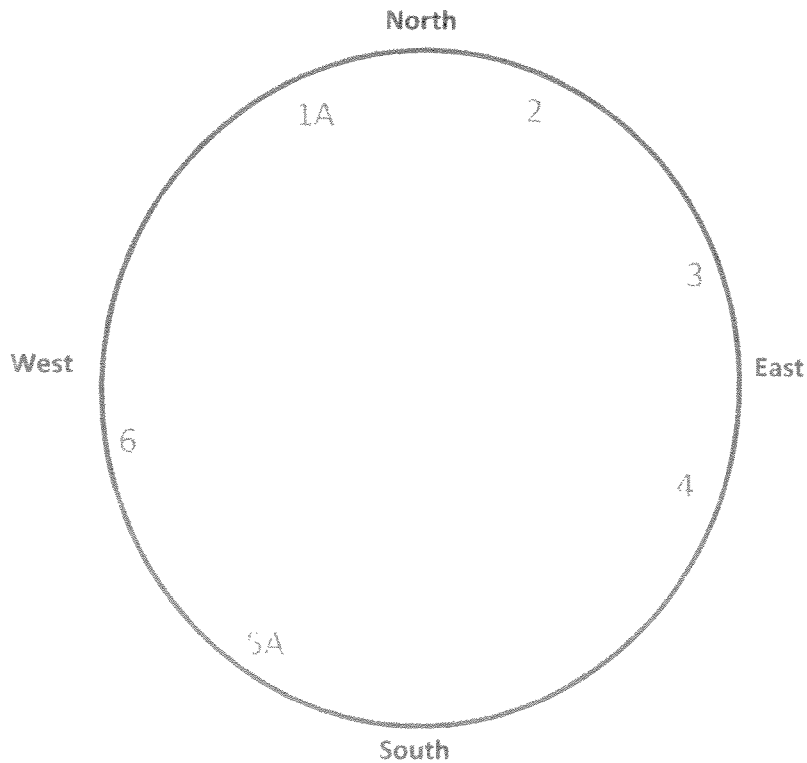
American
Chemistry
Council



Bayou Corne Sinkhole

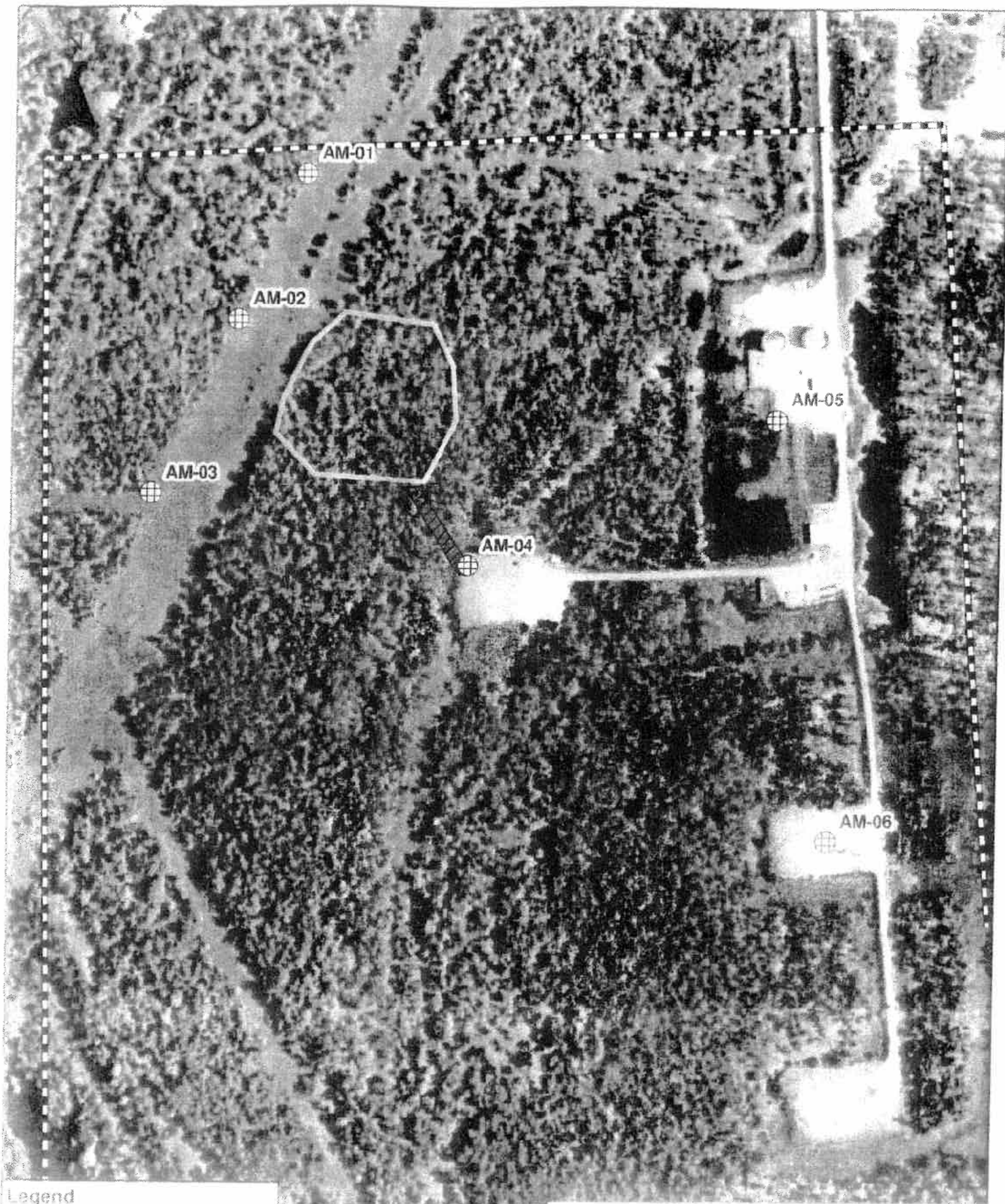
Date and Time: 8-30-12

	Time 7:00 p.m.	Time 10:00 p.m.	Time 1:00 a.m.	Time 4:00 a.m.
Tree 1		✓		
Tree 2		✓		
Tree 3		✓		
Tree 4		✓		
Tree 5		✓		
Tree 6		✓		



NOTE: Coordinates for each tree are forth coming.

By: Phil Blanchard



Legend

- Air Monitoring Location and Data
- ▭ Road of salt
- ▭ Salt flat
- ▭ Water

Scale: 0 125 250 500 Feet

Texas Brine Air Monitoring Locations
8/17/2012 - current

Universal Time: Friday, 31 Aug 2012 12:11

79°F Belle Rose, Louisiana

Like 35k National News

Local National Global Storms Health Travel Community Forecast Current Radar Satellite wxMap INav Sign-In Help Hurricanes Alerts

Weather Report

Belle Rose, Louisiana

Weather Report | Interactive Weather Map | Extended Forecast | Hourly Forecast | P-14 Observations | Historic Averages | Related

Current Conditions - °F | °C

As of 7:31 AM on Friday, 31 Aug 2012 (Local Time) from KBTR Reporting Station

Scattered Clouds

79°F

Feels Like: 83°

Wind (MPH): 79°
 Wind Index: 83°
 Dew Point: 77°
 Humidity: 94%
 Pressure: 30.01"

Clouding: Unf
 Visibility: 10mi
 Wind: 9mph
 Direction: 140° (SE)
 Gusts: NA

Report Text: KBTR 311231Z 1400KT 10SM SCT011 SCT018
 26/25 A3001 RMK AO2

View Detailed Observations for the last
 -48 Hours - 14 Days

Today's Forecast

8 AM
 Iso T-Storms **81°**

9 AM
 Iso T-Storms **84°**

10 AM
 Iso T-Storms **85°**

View Complete Hourly Forecast

Local Information



No Weather Alerts for this location

Radar Satellite Surface Analysis

Tropical Storm Tracking

Hurricane Ileana



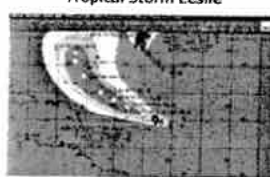
Current Track | Visible | Infrared

Hurricane Kirk



Current Track | Visible | Infrared

Tropical Storm Leslie



Current Track | Visible | Infrared

View Complete Tropical Storm Track List »

New Forecast Map Updates

Plan your seasonal activities better

View the Detailed Extended Forecast »



10 Day Forecast - °F | °C

View the Detailed Extended Forecast »

fri	sat	sun	mon	tue	wed	thu	fr	sat	sun
aug 31	sep 01	sep 02	sep 03	sep 04	sep 05	sep 06	sep 07	sep 08	sep 09
Sct T-Storms	PM T-Storms	P Cloudy	Iso T-Storms	Sct T-Storms	Iso T-Storms	Iso T-Storms	Sct T-Storms	Sct T-Storms	Sct T-Storms
88°	76° 89°	76° 89°	75° 89°	75° 91°	75° 91°	75° 90°	74° 87°	72° 85°	71° 83° 69°

Details for Friday, August 31

Partly to mostly cloudy with a chance of thunderstorms. Humid. High 88F. Winds S at 10 to 15 mph. Chance of rain 60%.

Evening: Partly to mostly cloudy skies with scattered thunderstorms mainly during the evening. Low 76F. Winds SSE at 5 to 10 mph. Chance of rain 60%.

UV Index: 7 (High)

Relative Humidity: 79%

Precipitation: 60%

Snow: 0%

Cloud Coverage: 79%

Sunrise: 6:41 AM

Sunset: 7:27 PM

Moonrise: 7:21 PM

Moonset: 6:42 AM



Moonphase: Full

Direction: S (169°)

Speed: 12Mph(19Kms, 10Kts)

Daily Forecast Chart

Chart Options: Temperature



SUPER FREAKONOMICS



Available on the Google Play Store

intellicast.com Local News

TOP STORIES NEAR YOU

[Here is the latest Louisiana sports news from The Associated Press](#)
 KWOC Local News

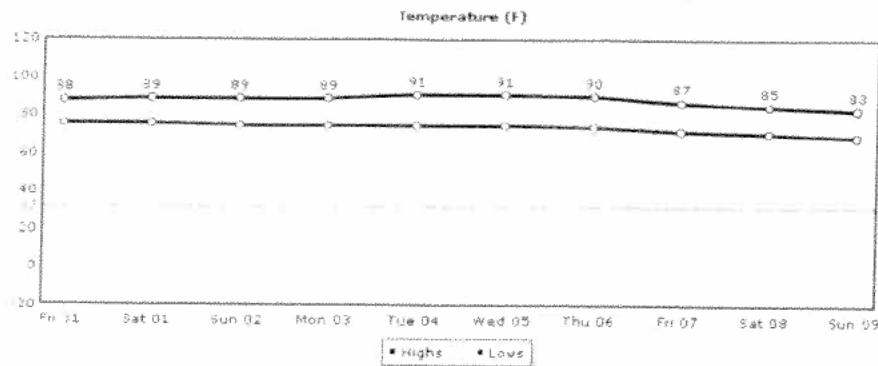
[Woman's death reveals problems at nursing homes - Shreveport Times](#)
 ShreveportGoogle News

[Fix It: Broken pipe leaves neighbor under water - Shreveport Times](#)
 ShreveportGoogle News

[Jack E. Ditt Jr. and William L. "Bill" McCollum: Governments gone wild - Shreveport Times](#)
 ShreveportGoogle News

[Shreveport-Bossier City area foreclosure rates decline - Shreveport Times](#)
 ShreveportGoogle News

Local news powered by Patch



Temperature UV Index Relative Humidity Precipitation Snow Clouds Wind

Daily Forecast Hourly Forecast Past Observations Historic Averages

Search the Web:

Search

Powered by Google

Local | National | Global | Storms | Health | Travel | Community

About Us | Weather on your Site | Advertise with Us | Contact Us | Members | Help | Site Map | News

Professional Weather Solutions: Aviation | Energy | Media

Intellicast.com: The Authority in Expert Weather

Your use of this site constitutes your acceptance of the Terms of Use and Privacy Policy

2012 WSI Corporation - v4.5.001:ICAST-WEB3

More from Intellicast



Check Out Our
Interactive Weather Map

Articles

- Local Weather Maps
- US Weather Maps
- US Current Weather
- Global Weather Maps
- Weather Analysis Charts
- Active Storm Track
- Weather Tools

Weather Center



Weather Alerts

Current National Weather Service Watches and Warnings by type and state throughout the United States.



Ski & Snow

The Ski & Snow Section is where you can get the latest ski resort conditions and snow forecasts.