

INCIDENT ACTION PLAN

Be brief and concise with your entries

Location Bayou Corne Sink Hole	Control Level Company Supervisory	Operational Period From 9/7/12 To 9/8/12
---	--	--

1.0 SITUATION Disease, community, environment PROMPTS: Weather, disease trends, Resources, Hazards & safety REFERENCE: Maps, weather reports, Sitreps, appreciation, warnings, alerts	CURRENT Sunny
	PREDICT Isolated Thunderstorms
2.0 OBJECTIVES (or MISSION) PROMPTS: Time & space REFERENCE: Appreciation – control options, courses open to disease	CURRENT Objective 1 - Gas Monitoring: 6 Gas Monitors have been set up in the field and are obtaining data on a continuous basis. (See Attached Map for Locations) The monitors are running on batteries which must be changed out every morning. Three monitors are located in the swamp and are required to be reached via airboats launched from TBC facilities. The continuous monitoring data is collected at an office trailer located at Texas Brine Grand Bayou Facility. Monitoring the information on a 24 hours basis. Monitoring is being recorded for LEL, VOC, H2S and O2. Objective 2 - Elevation survey taking place once a week. Objective 3- Sink hole observation map. See attached Objective 4 - Geo-Technical core sampling. Objective 5 – Surface water salinity monitoring. See Attached IAP
	ALTERNATE
3.0 EXECUTION add safety information as appropriate	
GENERAL OUTLINE PROMPTS: Strategies & tactics (current/proposed/alternate)	Safety Information: See Attached Safe Work Rules Reference IAP dated 8/9/12 Additional to our Safe Work Rules for this project we are adding the awareness of insects, reptiles and animals.

REFERENCE: Appreciation, Control Options	Inspect location for flammability Daily Safety Meetings PPE Required on site: Respirator w/ VOC Cartridge, Gloves for sampling, eye protection, life preservers, hearing protection.
GROUPINGS	NA
TASKS Including PR & Media	Same as above
COORDINATING INSTRUCTIONS PROMPTS: Timings, routes, assembly areas, staging areas	Texas Brine Grand Bayou Facility will be used as staging area.
4.0 ADMINISTRATION (Logistics support) PROMPTS: Unit names, locations, contact names, phone no's, timings, duties/tasks, routes, suppliers, quantities, status (required, organised, stand by, enroute)	
SUPPLY WHO, WHAT, WHERE, WHEN of resources not readily available	NA
GROUND SUPPORT Transport of personnel, traffic mgt, refuelling, mechanical repair/maintenance	NA
COMMUNICATIONS Installation, maintenance, technical advice	Cell Phone & Landline Communications: Kenneth Blanchard – Area Manager – 985- [REDACTED] (985- [REDACTED]) kblanchard@texasbrine.com Scott Borne – Facility Manager – 985- [REDACTED] (985- [REDACTED]) sborne@texasbrine.com Joel Miller, PE – Consultant – 337- [REDACTED] (337- [REDACTED]) joel.miller@cox-internet.com Bruce Martin – Operations/PR – 713- [REDACTED] (281- [REDACTED]) bmartin@texasbrine.com Mark Cartwright – Technical/Engineering – 713- [REDACTED] (281- [REDACTED])

	mcartwright@unitedbrine.com Scott Whitelaw – Environmental/Safety – 713- [REDACTED] (713- [REDACTED]) swhitelaw@tum.com
STAGING AREA/ FCP Setting up, communications, staffing	Texas Brine Grand Bayou Facility 1301 Hwy 70 South, Belle Rose, La 70341
5.0 ADMINISTRATION (Logistics services) PROMPTS: Unit names, locations, contact names, phone no's, timings, duties/tasks, routes, suppliers, quantities, status (required, organised, stand by, enroute)	
FACILITIES Security, waste, cleaning	NA
CATERING	NA
OH&S/MEDICAL Medical plan, first aid plan	Call 911
FINANCE	NA
TRAVEL	NA
INDUCTION/ TRAINING	NA
ACCOMMODATION	NA
6.0 CONTROL, COORDINATION & COMMUNICATION	
CONTROL & COORDINATION STRUCTURE REFERENCE Structural Chart	Plant Management Supervision / Contractor Work
COORDINATION &	NA

LIAISON Local knowledge, police, agency reps, emergency mgt reps	
COMMUNICATIONS PROMPTS Communications structure, operational comms plan, information mgt	Plant Management – Contractor Communication via Cell Phone

EXTRAS	
Attachments PROMPTS: maps, weather, organisational charts, resources, comms diagram	Site Map Current Weather Safe Work Rules
Plan developers PROMPTS PO, Logs Mgr, Controller	NA
Approval Controller, Ops Director	TBC Company Rep: <i>A. Cato Corne</i> FOSC: SOSC: POSC:

MILLER ENGINEERS & ASSOCIATES, INC.
CONSULTING ENGINEERS & LAND SURVEYORS
FRANKLIN, LA

OXY #5 MONUMENT

1" = 400'

NOTE:

PROPERTY & LEASE LINES ARE APPROXIMATE ONLY.
THIS SKETCH DOES NOT REPRESENT A PROPERTY
BOUNDARY SURVEY

OXY #4 MONUMENT

APPROX. EDGE
OF SLURRY PIT
8/4/12

T.B.M. 6
TB WATER SAMPLES

WELL 1

TANK "W"

TANK "E"

WATER WELL 1

T.B.M. 3A

T.B.M. 1

WATER WELL 5

WATER WELL 2

T.B.M. 3C

T.B.M. 2

WELL 3

T.B.M. 3

WELL 2

T.B.M. 5

T.B.M. 3B

TBC LEASE LINE

WELL 9

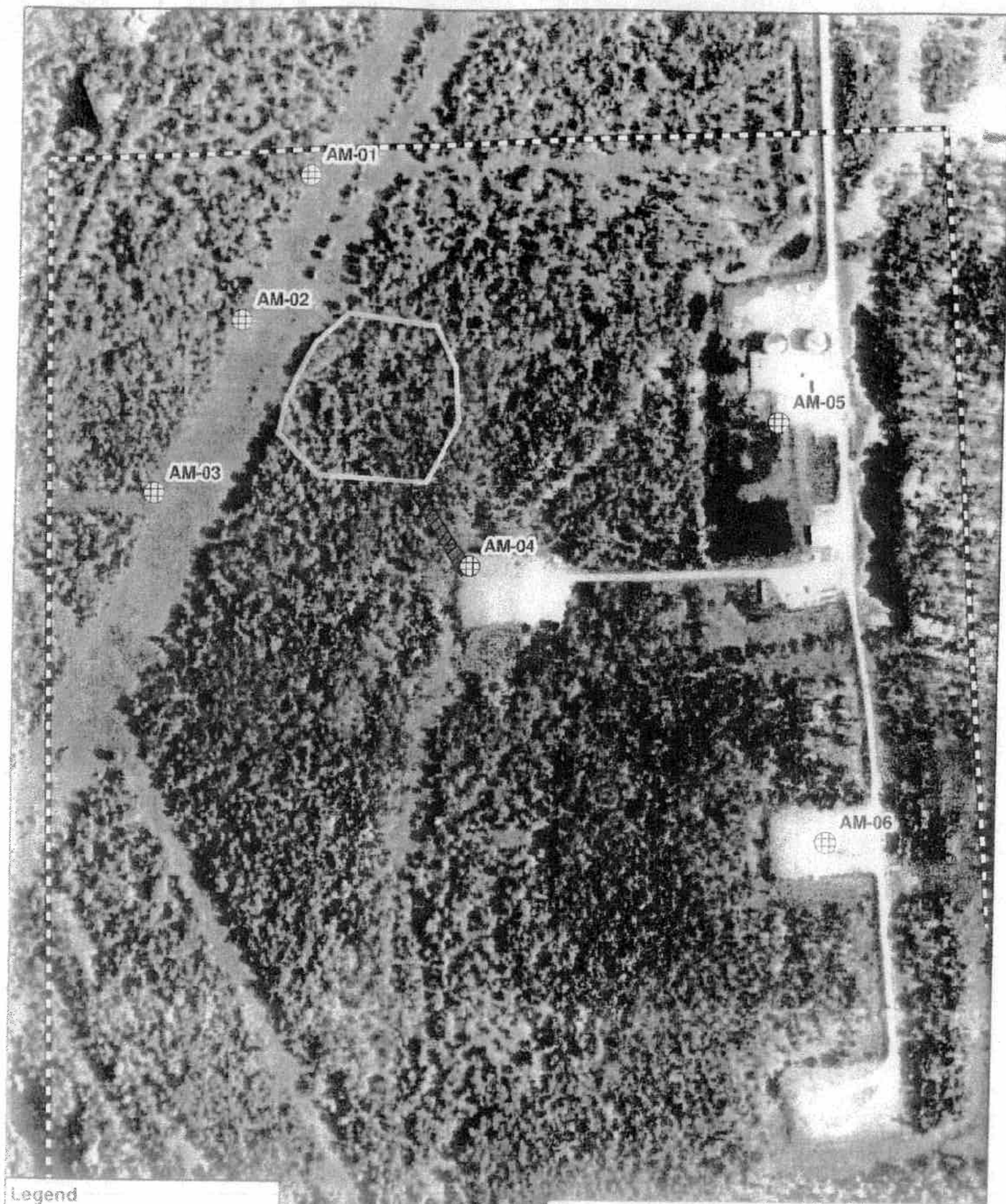
GPS BASE

WELL 10

REFERENCE PT

OXY GPS #4

T.B.M. 4



Legend

- Air Monitoring Station - 2012-08-17
- Road
- Scale bar - 0 to 500 Feet

Texas Brine Air Monitoring Locations
8/17/2012 - current

Bayou Corne Sinkhole

Date and Time:

9-6-12

Time

7:00 p.m.

Time

10:00 p.m.

Time

1:00 a.m.

Time

4:00 a.m.

Tree 1

Good

Tree 2

Good

Tree 3

Good

Tree 4

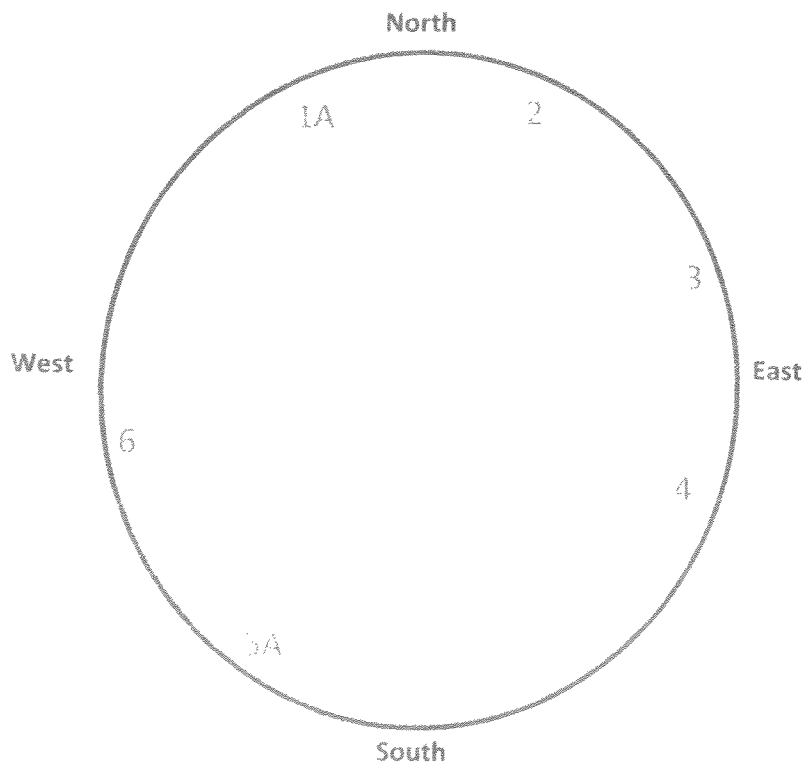
Good

Tree 5

Good

Tree 6

Good



NOTE: Coordinates for each tree are forth coming.

By: Luke [Signature]

TEXAS BRINE COMPANY, LLC AND AFFILIATED COMPANIES

Safe Work Practices

UNDERGROUND
STORAGE, LLC



UNITEDBRINE
PERFECT PERFORMANCE

UNITEDBRINE
PERFECT PERFORMANCE

TEXAS BRINE COMPANY, LLC

UNDERGROUND
SERVICE, LLC



RESPONSIBLE CARE

American
Chemistry
Council

81°F Belle Rose, Louisiana

Enter City, State, Country or U.S. Zip code or Airport Id

Local Weather

[Local](#) [National](#) [Global](#) [Storms](#) [Health](#) [Travel](#) [Community](#) [Forecast](#) [Current](#) [Radar](#) [Satellite](#) [wxMap](#) [iNav](#)

Weather Report





[Home](#) » [Local](#) » Weather Report

Belle Rose, Louisiana

[Weather Report](#) | [Interactive Weather Map](#) | [Extended Forecast](#) | [Hourly Forecast](#) | [Past Observations](#) | [Historic Averages](#) | [Related](#) ▾

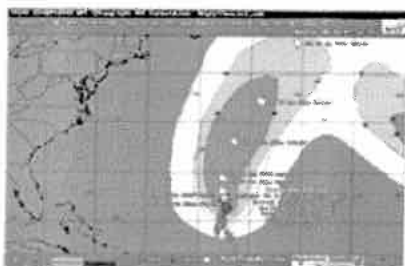
Current Conditions - °F | °C

As of 8:53 AM on Friday 07 Sep 2012 (Local Time) from KBTR Reporting Station

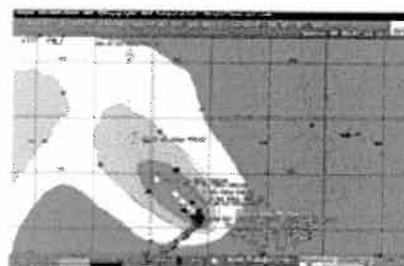
<div>Haze</div> <div>81°F</div> <div>Feels Like: 88°</div>		<div>Today's Forecast</div> <div><div><div>10 AM</div><div>P Cloudy</div><div></div><div>86°</div></div><div><div>11 AM</div><div>P Cloudy</div><div></div><div>89°</div></div><div><div>12 PM</div><div>P Cloudy</div><div></div><div>90°</div></div></div>		<div>Local Information</div> <div><div></div><div>No Weather Alerts for this location</div></div>	
<div>Wind Chill: 81°</div> <div>Heat Index: 88°</div> <div>Dew Point: 77°</div> <div>Humidity: 88%</div> <div>Pressure: 29.92"</div> <div>Ceiling: Unl</div> <div>Visibility: 10mi</div> <div>Wind: 3mph</div> <div>Direction: 60° (ENE)</div> <div>Gusts: NA</div>		<div>Report Text: KBTR 071353Z 06003KT 10SM HZ CLR 27/25 A2992 RMK AO2 SLP131 T02720250</div>			
<div>View Detailed Observations for the last 48 Hours · 14 Days</div>		<div>View Complete Hourly Forecast »</div>		<div>Radar · Satellite · Surface Analysis</div>	

Tropical Storm Tracking

Hurricane Leslie











[Current Track](#) | [Visible](#) | [Infrared](#)

Hurricane Michael

[Current Track](#) | [Visible](#) | [Infrared](#)[View Complete Tropical Storm Track List »](#)
New Forecast Map Updates
 Plan your seasonal activities better
[Click here to learn more...](#)

10 Day Forecast - °F | °C

[View the Detailed Extended Forecast »](#)

fri	sat	sun	mon	tue	wed	thu	fri	sat	sun
sep 07	sep 08	sep 09	sep 10	sep 11	sep 12	sep 13	sep 14	sep 15	sep 16
									
Iso T-Storms	Iso T-Storms	Sunny	Sunny	Sunny	P Cloudy	P Cloudy	P Cloudy	Sct T-Storms	Sct T-Storms
94° 75°	92° 66°	83° 64°	86° 66°	87° 72°	85° 71°	87° 72°	87° 73°	85° 72°	85° 72°

Details for Friday, September 07

Scattered clouds with the possibility of an isolated thunderstorm developing this afternoon. Humid. Heat index near 105F. High 94F. Winds light and variable. Chance of rain 30%.

Evening: A stray thunderstorm is possible through the evening. Some passing clouds. Low around 75F. Winds light and variable.

UV Index: 9 (Very High)

Relative Humidity: 68%

Precipitation: 30%

Snow: 0%

Cloud Coverage: 51%

Sunrise: 6:45 AM

Sunset: 7:19 PM

Moonrise: 11:46 PM

Moonset: 1:06 PM



Moonphase:

Waning Gibbous

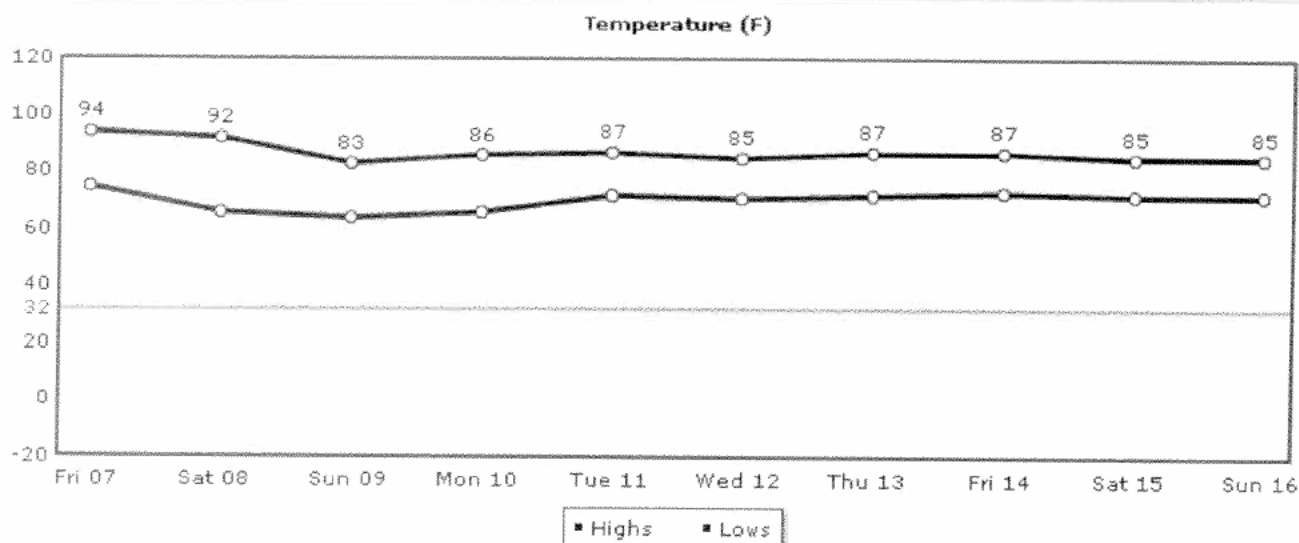


Direction: ENE (67°)

Speed: 5Mph(8Km, 4Kts)

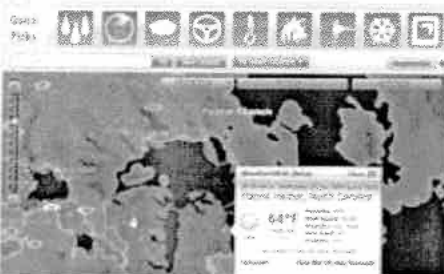
Daily Forecast Chart

Chart Options: Temperature ▾



Temperature UV Index Relative Humidity Precipitation Snow Clouds Wind

[Daily Forecast](#) [Hourly Forecast](#) [Past Observations](#) [Historic Averages](#)

More from Intellicast

Check Out Our
Interactive Weather Map

Articles

- [Local Weather Maps](#)
- [US Weather Maps](#)
- [US Current Weather](#)
- [Global Weather Maps](#)
- [Weather Analysis Charts](#)
- [Active Storm Track](#)
- [Weather Tools](#)

Weather Center**Weather Alerts**

Current National Weather Service Watches and Warnings by type and state throughout the United States.

**Ski & Snow**

The Ski & Snow Section is where you can get the latest ski resort conditions and snow forecasts.