

INCIDENT ACTION PLAN

Be brief and concise with your entries

Location Bayou Corne Sink Hole	Control Level Company Supervisory	Operational Period From 9/12/12 To 9/13/12
---	--	--

1.0 SITUATION Disease, community, environment PROMPTS: Weather, disease trends, Resources, Hazards & safety REFERENCE: Maps, weather reports, Sitreps, appreciation, warnings, alerts	CURRENT Sunny PREDICT Sunny
2.0 OBJECTIVES (or MISSION) PROMPTS: Time & space REFERENCE: Appreciation – control options, courses open to disease	CURRENT Objective 1 - Gas Monitoring: 6 Gas Monitors have been set up in the field and are obtaining data on a continuous basis. (See Attached Map for Locations) The monitors are running on batteries which must be changed out every morning. Three monitors are located in the swamp and are required to be reached via airboats launched from TBC facilities. The continuous monitoring data is collected at an office trailer located at Texas Brine Grand Bayou Facility. Monitoring the information on a 24 hours basis. Monitoring is being recorded for LEL, VOC, H2S and O2. Objective 2 - Elevation survey taking place once a week. Objective 3- Sink hole observation map. See attached Objective 4- Installation of the five inclinometers. See attached IAP ALTERNATE
3.0 EXECUTION add safety information as appropriate	
GENERAL OUTLINE PROMPTS: Strategies & tactics (current/proposed/alternate) REFERENCE: Appreciation, Control Options	Safety Information: See Attached Safe Work Rules Reference IAP dated 8/9/12 Additional to our Safe Work Rules for this project we are adding the awareness of insects, reptiles and animals. Inspect location for flammability Daily Safety Meetings

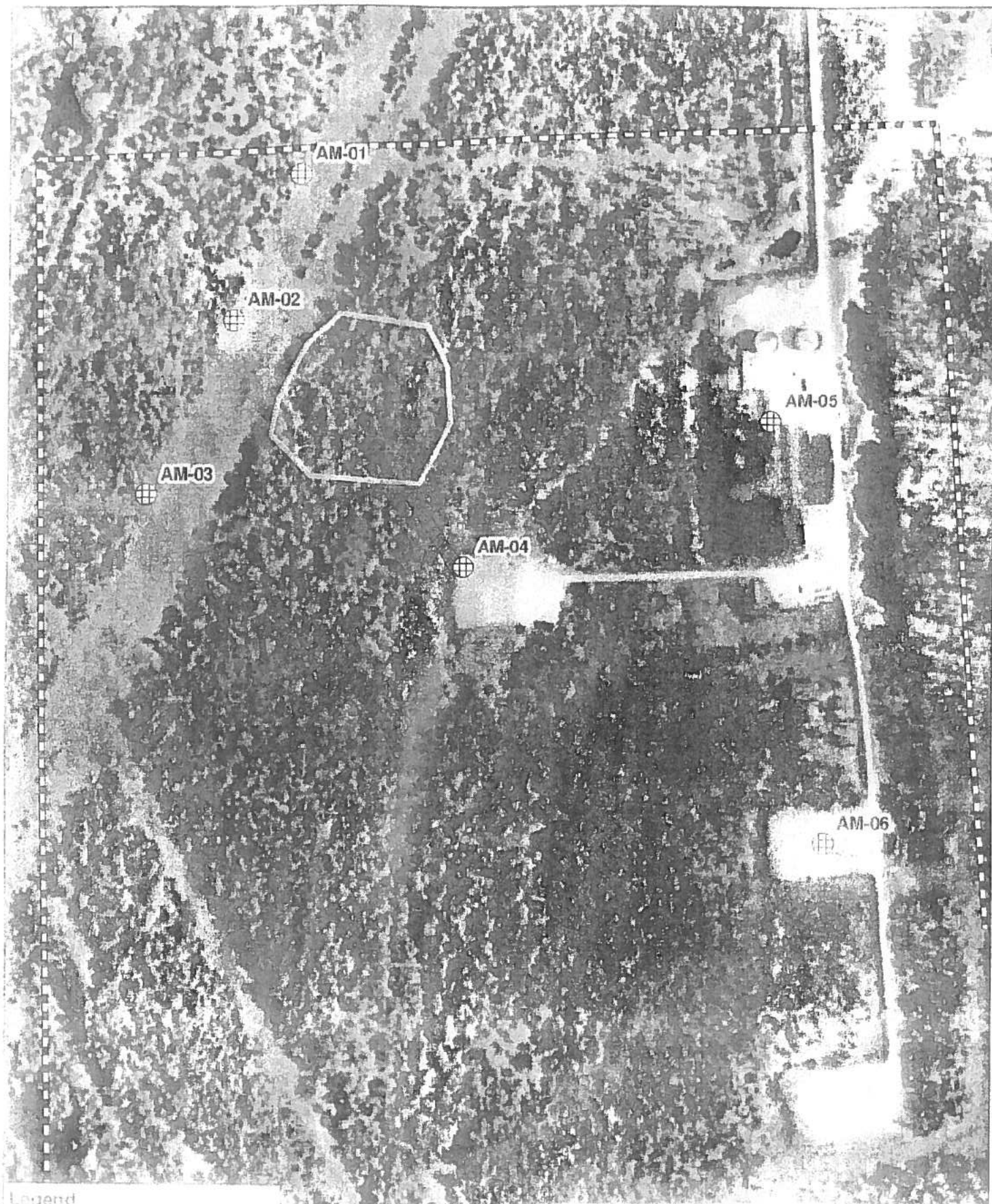
	PPE Required on site: Respirator w/ VOC Cartridge, Gloves for sampling, eye protection, life preservers, hearing protection.
GROUPINGS	NA
TASKS Including PR & Media	Same as above
COORDINATING INSTRUCTIONS PROMPTS: Timings, routes, assembly areas, staging areas	Texas Brine Grand Bayou Facility will be used as staging area.
4.0 ADMINISTRATION (Logistics support) PROMPTS: Unit names, locations, contact names, phone no's, timings, duties/tasks, routes, suppliers, quantities, status (required, organised, stand by, enroute)	
SUPPLY WHO, WHAT, WHERE, WHEN of resources not readily available	NA
GROUND SUPPORT Transport of personnel, traffic mgt, refuelling, mechanical repair/maintenance	NA
COMMUNICATIONS Installation, maintenance, technical advice	Cell Phone & Landline Communications: Kenneth Blanchard – Area Manager – 985- (985-) kblanchard@texasbrine.com Scott Borne – Facility Manager – 985- (985-) sborne@texasbrine.com Joel Miller, PE – Consultant – 337- (337-) joel.miller@cox-internet.com Bruce Martin – Operations/PR – 713- (281-) bmartin@texasbrine.com Mark Cartwright – Technical/Engineering – 713- (281-) mcartwright@unitedbrine.com Scott Whitelaw – Environmental/Safety – 713- (713-) swhitelaw@tum.com

STAGING AREA/ FCP Setting up, communications, staffing	Texas Brine Grand Bayou Facility 1301 Hwy 70 South, Belle Rose, La 70341
5.0 ADMINISTRATION (Logistics services) PROMPTS: Unit names, locations, contact names, phone no's, timings, duties/tasks, routes, suppliers, quantities, status (required, organised, stand by, enroute)	
FACILITIES Security, waste, cleaning	NA
CATERING	NA
OH&S/MEDICAL Medical plan, first aid plan	Call 911
FINANCE	NA
TRAVEL	NA
INDUCTION/ TRAINING	NA
ACCOMMODATION	NA
6.0 CONTROL, COORDINATION & COMMUNICATION	
CONTROL & COORDINATION STRUCTURE REFERENCE Structural Chart	Plant Management Supervision / Contractor Work
COORDINATION & LIAISON Local knowledge, police, agency	NA




reps, emergency mgt reps	
COMMUNICATIONS PROMPTS Communications structure, operational comms plan, information mgt	Plant Management – Contractor Communication via Cell Phone

EXTRAS	
Attachments PROMPTS: maps, weather, organisational charts, resources, comms diagram	Site Map Current Weather Safe Work Rules
Plan developers PROMPTS PO, Logs Mgr, Controller	NA
Approval Controller, Ops Director	TBC Company Rep: FOSC: SOSC: POSC:





Legend

 North arrow
 Monitoring location
 Boundary

0 125 250 500

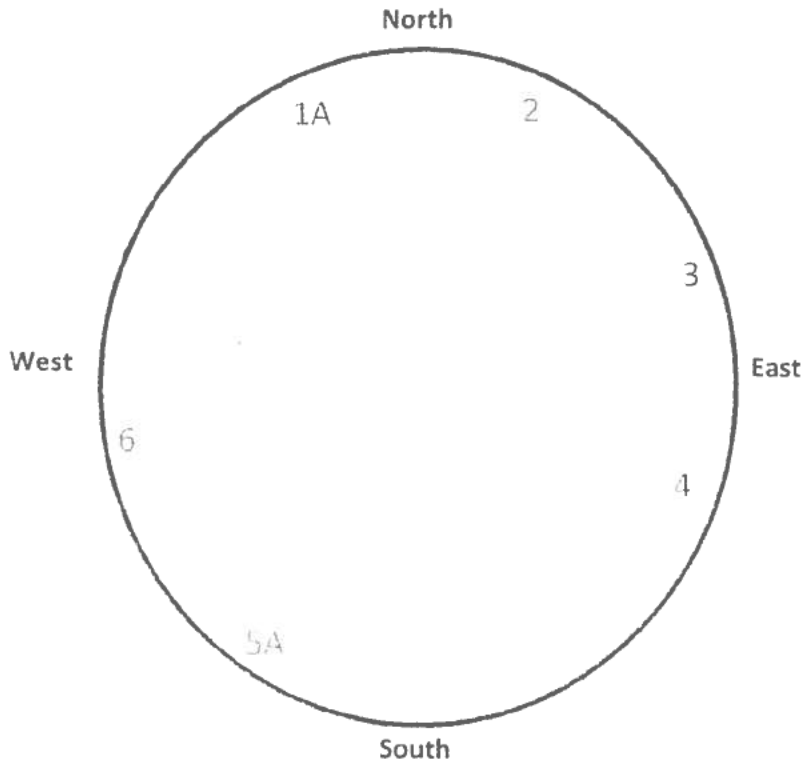
Feet

Figure 3-6: Monitoring Locations
3/27/12 - current

Bayou Corne Sinkhole

Date and Time: 9-11-12

	Time 7:00 p.m.	Time 10:00 p.m.	Time 1:00 a.m.	Time 4:00 a.m.
Tree 1		Good		
Tree 2		Good		
Tree 3		Good		
Tree 4		Good		
Tree 5		Good		
Tree 6		Good		



NOTE: Coordinates for each tree are forth coming.

By: L. K. [Signature]

Universal Time: Wednesday, 12 Sep 2012, 12:27

69°F Belle Rose, Louisiana

Like 35k National News

Local National Global Storms Health Travel Community Forecast Current Radar Satellite wxMap iNav

Weather Report

Belle Rose, Louisiana

Weather Report | Interactive Weather Map | E-tended Forecast | Hourly Forecast | Past Observations | Historic Averages | Related

Current Conditions - °F | °C

As of 6:53 AM on Wednesday 12 Sep 2012 (Local Time) from KBTR Reporting Station

Clear
69°F
 Feels Like: 69°
 Wind Chill: 69°
 Heat Index: 69°
 Dew Point: 66°
 Humidity: 90%
 Pressure: 30.1"

Ceiling: Unl
 Visibility: 10mi
 Wind: 3mph
 Direction: 80° (E)
 Gusts: NA

Report Text: KTR 121153Z 0800JKT 10SM CLR 21/19 A3010
RMK AO- SL 19 T02060.89 10222 20206 53012 5

View Detailed Observations for the last 48 hours - 14 days

Today's Forecast
 8 AM P Cloudy 74°
 9 AM P Cloudy 78°
 10 AM P Cloudy 82°

View Complete Hourly Forecast

Local Information

No Weather Alerts for this location

Radar - Satellite - Surface Analysis

Tropical Storm Tracking

Tropical Storm Nadine ATLANTIC TRACK



Maps:

- Current Track
- Visible Satellite
- Infrared Satellite

Bulletins:

- Advisory
- Storm Log

Additional Resources:

- Watches & Warnings
- Severe Outlook Today
- Severe Outlook Tomorrow
- Lightning Strikes
- Hurricane Season
- Summaries

New Forecast Map Updates

Plan your seasonal activities better

Click here to learn more



10 Day Forecast - °F | °C

View the Detailed Extended Forecast

wed	thu	fri	sat	sun	mon	tue	wed	thu	fri
sep 12	sep 13	sep 14	sep 15	sep 16	sep 17	sep 18	sep 19	sep 20	sep 21
Is T-Storms	Is T-Storms	P Cloudy	P Cloudy	Sct T-Storms	P Cloudy	P Cloudy	Sunny	Sunny	Sunny
88° 72°	80° 71°	89° 71°	88° 72°	82° 71°	84° 70°	86° 70°	85° 70°	85° 71°	84° 72°

Details for Wednesday, September 12

Some clouds and possibly an isolated thunderstorm this afternoon. High 88F Winds E at 5 to 10 mph. Chance of rain 30%.

Evening: A stray thunderstorm is possible through the evening. Some passing clouds. Low 72F Winds E at 5 to 10 mph.

UV Index: 10 (Very High) Relative Humidity: 71% Precipitation: 30% Snow: 0% Cloud Coverage: 44%

Sunrise: 6:47 AM
Sunset: 7:12 PM

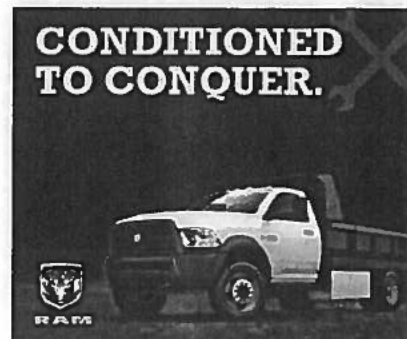
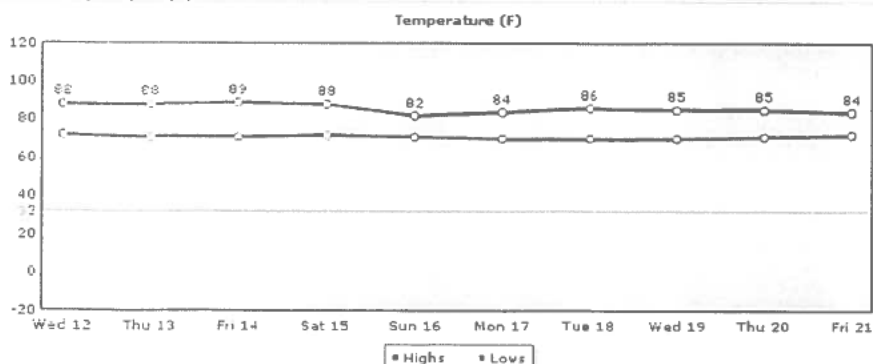
Moonrise: 3:18 AM
Moonset: 4:50 PM

Moonphase: Waning Crescent

Direction: E (91°)
Speed: 10Mph(16Km, 8Kts)

Daily Forecast Chart

Chart Options: Temperature



Trip Planner

Required

☒ Flights Only

☐ Flights & Hotels

Ticket type ☐ One Way ☒ Round Trip

Depart 09/26/2012 Anytime
 Return 10/03/2012 Anytime

From To
[List all departures](#) [List all destinations](#)

Adults 1 Children 0 Search

State Farm™

Your new car comes with GPS, heated seats and \$480 in savings.

A Good Credit Score Means Lower Rates on Houses

Tom Union

STEP BY STEP. CLICK CLICK.

Weight Watchers Online