

**INCIDENT ACTION PLAN**

Be brief and concise with your entries

Location	Control Level	Operational Period
Bayou Corne Sink Hole	Company Supervisory	From 9/28/12 To 9/29/12

<b>1.0 SITUATION</b> Disease, community, environment  PROMPTS: Weather, disease trends, Resources, Hazards & safety  REFERENCE: Maps, weather reports, Sitreps, appreciation, warnings, alerts	<b>CURRENT</b> Partly Cloudy  <b>PREDICT</b> Chance of Rain
<b>2.0 OBJECTIVES (or MISSION)</b>  PROMPTS: Time & space  REFERENCE: Appreciation – control options, courses open to disease	<b>CURRENT</b> <b>Objective 1 - Gas Monitoring:</b>  6 Gas Monitors have been set up in the field and are obtaining data on a continuous basis. (See Attached Map for Locations)  The monitors are running on batteries which must be changed out every morning. Three monitors are located in the swamp and are required to be reached via airboats launched from TBC facilities.  The continuous monitoring data is collected at an office trailer located at Texas Brine Grand Bayou Facility. Monitoring the information on a 24 hours basis. Monitoring is being recorded for LEL, VOC, H2S and O2.  <b>Objective 2 - Elevation survey taking place once a week.</b>  <b>Objective 3- Sink hole observation. See attached Map.</b>  <b>ALTERNATE</b>
<b>3.0 EXECUTION</b> add safety information as appropriate	
<b>GENERAL OUTLINE</b>  PROMPTS: Strategies & tactics (current/proposed/alternate)  REFERENCE: Appreciation, Control Options	<b>Safety Information: See Attached Safe Work Rules</b> <b>Reference IAP dated 8/9/12</b> <b>Additional to our Safe Work Rules for this project we are adding the awareness of insects, reptiles and animals.</b> <b>Inspect location for flammability</b> <b>Daily Safety Meetings</b> <b>PPE Required on site: Respirator w/ VOC Cartridge, Gloves for sampling, eye protection, life preservers, hearing protection.</b>

GROUPINGS	NA
TASKS Including PR & Media	Same as above
COORDINATING INSTRUCTIONS  PROMPTS: Timings, routes, assembly areas, staging areas	Texas Brine Grand Bayou Facility will be used as staging area.
<b>4.0 ADMINISTRATION</b> (Logistics support)	
PROMPTS: Unit names, locations, contact names, phone no's, timings, duties/tasks, routes, suppliers, quantities, status (required, organised, stand by, enroute)	
SUPPLY WHO, WHAT, WHERE, WHEN of resources not readily available	NA
GROUND SUPPORT Transport of personnel, traffic mgt, refuelling, mechanical repair/maintenance	NA
COMMUNICATIONS Installation, maintenance, technical advice	<b>Cell Phone &amp; Landline Communications:</b> Kenneth Blanchard – Area Manager – 985- ( ) (985- ) kblanchard@texasbrine.com Scott Borne – Facility Manager – 985- ( ) (985- ) sborne@texasbrine.com Joel Miller, PE – Consultant – 337- ( ) (337- ) joel.miller@cox-internet.com Bruce Martin – Operations/PR – 713- ( ) (281- ) bmartin@texasbrine.com Mark Cartwright – Technical/Engineering – 713- ( ) (281- ) mcartwright@unitedbrine.com Scott Whitelaw – Environmental/Safety – 713- ( ) (713- ) swhitelaw@tum.com
STAGING AREA/	Texas Brine Grand Bayou Facility

<b>FCP</b> Setting up, communications, staffing	<b>1301 Hwy 70 South, Belle Rose, La 70341</b>
<b>5.0 ADMINISTRATION</b> (Logistics services)  PROMPTS: Unit names, locations, contact names, phone no's, timings, duties/tasks, routes, suppliers, quantities, status (required, organised, stand by, enroute)	
<b>FACILITIES</b> Security, waste, cleaning	<b>NA</b>
<b>CATERING</b>	<b>NA</b>
<b>OH&amp;S/MEDICAL</b> Medical plan, first aid plan	<b>Call 911</b>
<b>FINANCE</b>	<b>NA</b>
<b>TRAVEL</b>	<b>NA</b>
<b>INDUCTION/ TRAINING</b>	<b>NA</b>
<b>ACCOMMODATION</b>	<b>NA</b>
<b>6.0 CONTROL, COORDINATION &amp; COMMUNICATION</b>	
<b>CONTROL &amp; COORDINATION STRUCTURE</b>  REFERENCE Structural Chart	<b>Plant Management Supervision / Contractor Work</b>
<b>COORDINATION &amp; LIAISON</b>  Local knowledge, police, agency reps, emergency mgt reps	<b>NA</b>

<b>COMMUNICATIONS</b>  PROMPTS Communications structure, operational comms plan, information mgt	<b>Plant Management – Contractor Communication via Cell Phone</b>
---	---

<b>EXTRAS</b>	
<b>Attachments</b> PROMPTS: maps, weather, organisational charts, resources, comms diagram	<b>Site Map</b> <b>Current Weather</b> <b>Safe Work Rules</b>
<b>Plan developers</b> PROMPTS PO, Logs Mgr, Controller	<b>NA</b>
<b>Approval</b> Controller, Ops Director	<b>TBC Company Rep:</b> <b>FOSC:</b> <b>SOSC:</b> <b>POSC:</b>

MILLER ENGINEERS & ASSOCIATES, INC.  
CONSULTING ENGINEERS & LAND SURVEYORS  
FRANKLIN, LA.

OXY #5 MONUMENT

1" = 400'

NOTE:

PROPERTY & LEASE LINES ARE APPROXIMATE ONLY  
THIS SKETCH DOES NOT REPRESENT A PROPERTY  
BOUNDARY SURVEY.

OXY #4 MONUMENT

APPROX. EDGE  
OF SLURRY PIT  
8/4/12

T.B.M. 6

TB  
WATER SAMPLES

WELL 1

TANK "W"

TANK "E"

T.B.M. 1

WATER WELL 1

T.B.M. 3A

T.B.M. 3C

WATER WELL 5

WATER WELL 2

T.B.M. 2

WELL 3

T.B.M. 3

WELL 2

T.B.M. 5

T.B.M. 3B

TBC LEASE LINE

WELL 9

GPS BASE

WELL 10

REFERENCE PT.

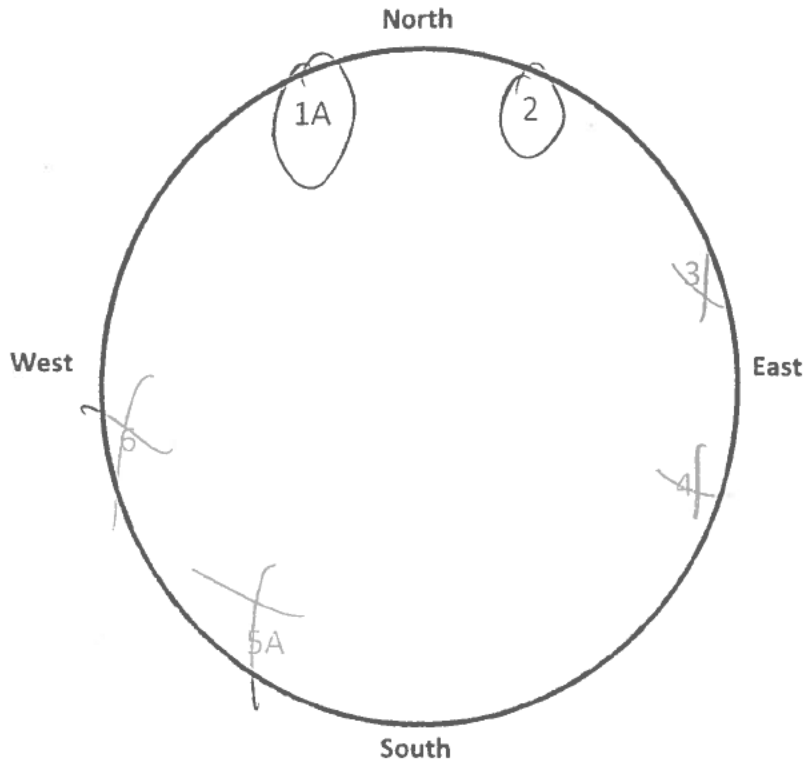
OXY GPS #4

T.B.M. 4

# Bayou Corne Sinkhole

Date and Time: 9-27-12

	Time 7:00 p.m.	Time 10:00 p.m.	Time 1:00 a.m.	Time 4:00 a.m.
Tree 1		Yes		
Tree 2		Yes		
Tree 3		No		
Tree 4		No		
Tree 5		No		
Tree 6		No		



NOTE: Coordinates for each tree are forth coming.

By: Butte-Right

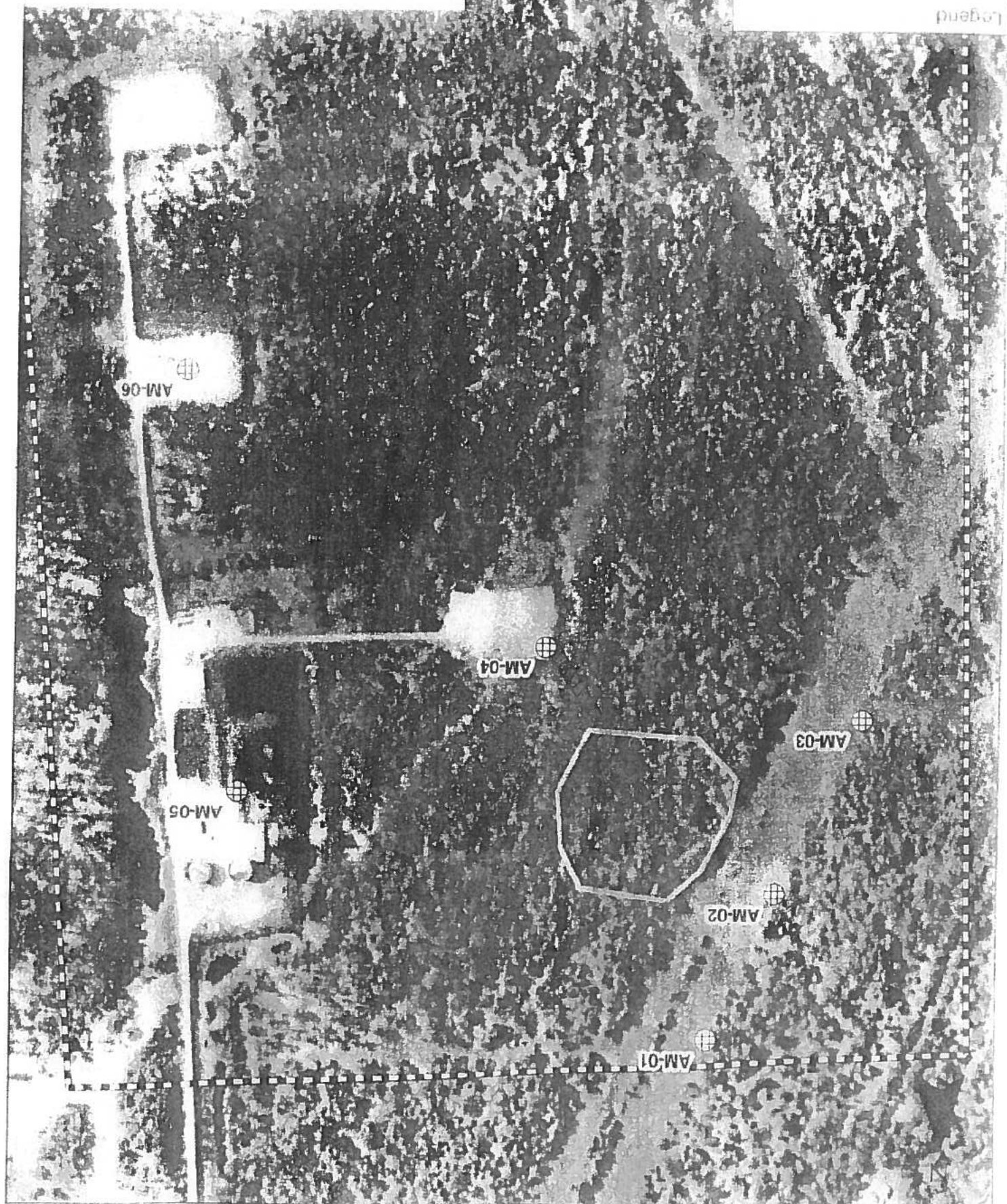


Figure 13 - Air Monitoring Locations  
3/1/2012 - current

0 125 250 500

Legend

Legend



# TEXAS BRINE COMPANY, LLC AND AFFILIATED COMPANIES

Safe Work Practices

UNDERGROUND  
STORAGE, LLC



UNITEDBRINE

UNITEDBRINE

TEXAS BRINE COMPANY, LLC

UNDERGROUND  
STORAGE, LLC



AMERICAN CHEMICAL SOCIETY

American  
Chemistry  
Council



Universal Time: Friday, 28 Sep 2012, 13:48

**73°F** Belle Rose, Louisiana ▾  [Local Weather](#) Like 36k [National News](#)

Local National Global Storms Health Travel Community [Forecast](#) [Current](#) [Radar](#) [Satellite](#) [wxMap](#) [iNav](#) [Sign-In](#) [Help](#) [Hurricanes](#) [Alerts](#)


## Weather Report

[Home](#) » [Local](#) » [Weather Report](#)


## Belle Rose, Louisiana

[Weather Report](#) | [Interactive Weather Map](#) | [Extended Forecast](#) | [Hourly Forecast](#) | [Past Observations](#) | [Historic Averages](#) | [Related](#) ▾

**Current Conditions** - °F | °C As of 8:24 AM on Friday 28 Sep 2012 (Local Time) from KBTR Reporting Station

 Haze  
**73°F**  
 Feels Like: 73°

**Today's Forecast**  
 9 AM M Cloudy 77°  
 10 AM M Cloudy 81°  
 11 AM P Cloudy 83°

**Local Information**  
 **No Weather Alerts for this location**

Wind Chill: 73°  
 Heat Index: 73°  
 Dew Point: 72°  
 Humidity: 94%  
 Pressure: 30.07"  
 Ceiling: Unl  
 Visibility: 5mi  
 Wind: 5mph  
 Direction: 80° (E)  
 Gusts: NA

**Report Text:** KBTR 281324Z 08004KT 5SM BR SCT015 23/22 A3007 RMK AO2

[View Detailed Observations for the last 48 Hours - 14 Days](#)

[View Complete Hourly Forecast](#) » [Radar](#) · [Satellite](#) · [Surface Analysis](#)

## Tropical Storm Tracking

Tropical Storm Nadine  
ATLANTIC TRACK

## Maps:

- Current Track
- Visible Satellite
- Infrared Satellite

## Bulletins:

- Advisory
- Storm Log











## Additional Resources:

- Watches & Warnings
- Severe Outlook Today
- Severe Outlook Tomorrow
- Lightning Strikes
- Hurricane Season Summaries

New Forecast Map Updates  
Plan your seasonal activities better[Click here to learn more...](#)

## 10 Day Forecast - °F | °C

[View the Detailed Extended Forecast](#) »

fri	sat	sun	mon	tue	wed	thu	fri	sat	sun
sep 28	sep 29	sep 30	oct 01	oct 02	oct 03	oct 04	oct 05	oct 06	oct 07
									
Iso T-Storms	T-Storms	Rain/Thunder	Iso T-Storms	Sunny	M Sunny	P Cloudy	Sunny	PM T-Storms	M Sunny
88° 72°	82° 70°	77° 69°	79° 62°	84° 66°	86° 66°	86° 66°	85° 66°	85° 66°	85° 66°

## Details for Friday, September 28

Areas of patchy fog early. Partly to mostly cloudy with a slight chance of showers and thunderstorms in the afternoon. High 88F. Winds light and variable. Chance of rain 30%.

**Evening:** Partly cloudy with a slight chance of thunderstorms. Humid. Low 72F. Winds light and variable. Chance of rain 30%.

UV Index: 7 (High)    Relative Humidity: 74%    Precipitation: 30%    Snow: 0%    Cloud Coverage: 66%

Sunrise: 6:56 AM

Sunset: 6:53 PM

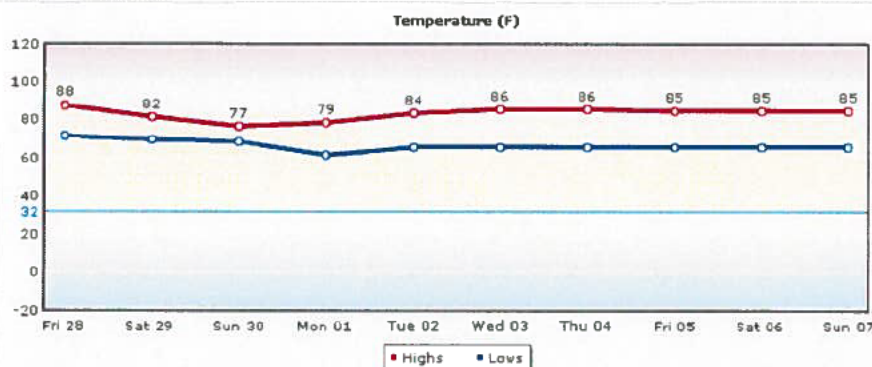
Moonrise: 5:54 PM

Moonset: 5:31 AM

 **Moonphase:**  
Waxing Gibbous

 **Direction:** ESE (120°)  
**Speed:** 5Mph(8Km, 4Kts)


## Daily Forecast Chart

Chart Options: [Temperature](#) ▾

[Temperature](#) [UV Index](#) [Relative Humidity](#) [Precipitation](#) [Snow](#) [Clouds](#) [Wind](#)

[Daily Forecast](#) [Hourly Forecast](#) [Past Observations](#) [Historic Averages](#)

**More from Intellicast**




Check Out Our  
Interactive Weather Map


**Articles**

- [Local Weather Maps](#)
- [US Weather Maps](#)
- [US Current Weather](#)
- [Global Weather Maps](#)
- [Weather Analysis Charts](#)
- [Active Storm Track](#)
- [Weather Tools](#)

**Weather Center**



**Weather Alerts**  
Current National Weather Service Watches and Warnings by type and state throughout the United States.



**Ski & Snow**  
The Ski & Snow Section is where you can get the latest ski resort conditions and snow forecasts.



This next monster penny stock pick could make you set for life...



If you are a smoker and live in [Texas] you need to read this...



(Texas): This 1 weird "loophole" has become the car insurance companies worst nightmare!

Search the Web:

Search

Powered by Google

[Local](#) | [National](#) | [Global](#) | [Storms](#) | [Health](#) | [Travel](#) | [Community](#)

[About Us](#) | [Weather on your Site](#) | [Advertise with Us](#) | [Contact Us](#) | [Members](#) | [Help](#) | [Site Map](#) | [News](#)

Professional Weather Solutions: [Aviation](#) | [Energy](#) | [Media](#)

Intellicast.com: The Authority in Expert Weather

Your use of this site constitutes your acceptance of the [Terms of Use](#) and [Privacy Policy](#)

2012 WSI Corporation - v4.5.001-ICAST-WEB3