

**INCIDENT ACTION PLAN**

Be brief and concise with your entries

Location	Control Level	Operational Period
Bayou Corne Sink Hole	Company Supervisory	From 10/2/12 To 10/3/12

<b>1.0 SITUATION</b> Disease, community, environment  PROMPTS: Weather, disease trends, Resources, Hazards & safety  REFERENCE: Maps, weather reports, Sitreps, appreciation, warnings, alerts	<b>CURRENT</b> Sunny
	<b>PREDICT</b> Sunny
<b>2.0 OBJECTIVES (or MISSION)</b>  PROMPTS: Time & space  REFERENCE: Appreciation – control options, courses open to disease	<b>CURRENT</b> <b>Objective 1 - Gas Monitoring:</b>  6 Gas Monitors have been set up in the field and are obtaining data on a continuous basis. (See Attached Map for Locations)  The monitors are running on batteries which must be changed out every morning. Three monitors are located in the swamp and are required to be reached via airboats launched from TBC facilities.  The continuous monitoring data is collected at an office trailer located at Texas Brine Grand Bayou Facility. Monitoring the information on a 24 hours basis. Monitoring is being recorded for LEL, VOC, H2S and O2.  <b>Objective 2 - Elevation survey taking place once a week.</b>  <b>Objective 3-</b> Sink hole observation. See attached Map. Remediation plan has begun 10/1/12 @ 7:00 am See Attached Plan.
	<b>ALTERNATE</b>
	<b>3.0 EXECUTION</b> add safety information as appropriate
<b>GENERAL OUTLINE</b>  PROMPTS: Strategies & tactics (current/proposed/alternate)  REFERENCE: Appreciation, Control Options	<b>Safety Information: See Attached Safe Work Rules</b> <b>Reference IAP dated 8/9/12</b> <b>Additional to our Safe Work Rules for this project we are adding the awareness of insects, reptiles and animals.</b> <b>Inspect location for flammability</b> <b>Daily Safety Meetings</b> <b>PPE Required on site: Respirator w/ VOC Cartridge, Gloves for sampling, eye protection, life preservers, hearing protection.</b>

GROUPINGS	NA
TASKS Including PR & Media	Same as above
COORDINATING INSTRUCTIONS  PROMPTS: Timings, routes, assembly areas, staging areas	Texas Brine Grand Bayou Facility will be used as staging area.
<b>4.0 ADMINISTRATION</b> (Logistics support)	
PROMPTS: Unit names, locations, contact names, phone no's, timings, duties/tasks, routes, suppliers, quantities, status (required, organised, stand by, enroute)	
SUPPLY WHO, WHAT, WHERE, WHEN of resources not readily available	NA
GROUND SUPPORT Transport of personnel, traffic mgt, refuelling, mechanical repair/maintenance	NA
COMMUNICATIONS Installation, maintenance, technical advice	<b>Cell Phone &amp; Landline Communications:</b> <b>Kenneth Blanchard – Area Manager – 985- ( ) (985- )</b> <b>kblanchard@texasbrine.com</b> <b>Scott Borne – Facility Manager – 985- ( ) (985- )</b> <b>sborne@texasbrine.com</b> <b>Joel Miller, PE – Consultant – 337- ( ) (337- ) joel.miller@cox-</b> <b>internet.com</b> <b>Bruce Martin – Operations/PR – 713- ( ) (281- )</b> <b>bmartin@texasbrine.com</b> <b>Mark Cartwright – Technical/Engineering – 713- ( ) (281- )</b> <b>mcartwright@unitedbrine.com</b> <b>Scott Whitelaw – Environmental/Safety – 713- ( ) (713- )</b> <b>swhitelaw@tum.com</b>
STAGING AREA/	Texas Brine Grand Bayou Facility

<b>FCP</b> Setting up, communications, staffing	<b>1301 Hwy 70 South, Belle Rose, La 70341</b>
<b>5.0 ADMINISTRATION</b> (Logistics services)	
PROMPTS: Unit names, locations, contact names, phone no's, timings, duties/tasks, routes, suppliers, quantities, status (required, organised, stand by, enroute)	
<b>FACILITIES</b> Security, waste, cleaning	<b>NA</b>
<b>CATERING</b>	<b>NA</b>
<b>OH&amp;S/MEDICAL</b> Medical plan, first aid plan	<b>Call 911</b>
<b>FINANCE</b>	<b>NA</b>
<b>TRAVEL</b>	<b>NA</b>
<b>INDUCTION/ TRAINING</b>	<b>NA</b>
<b>ACCOMMODATION</b>	<b>NA</b>
<b>6.0 CONTROL, COORDINATION &amp; COMMUNICATION</b>	
<b>CONTROL &amp; COORDINATION STRUCTURE</b>  REFERENCE Structural Chart	<b>Plant Management Supervision / Contractor Work</b>
<b>COORDINATION &amp; LIAISON</b>  Local knowledge, police, agency reps, emergency mgt reps	<b>NA</b>

<b>COMMUNICATIONS</b>  PROMPTS Communications structure, operational comms plan, information mgt	<b>Plant Management – Contractor Communication via Cell Phone</b>
---	---

<b>EXTRAS</b>	
<b>Attachments</b> PROMPTS: maps, weather, organisational charts, resources, comms diagram	<b>Site Map</b> <b>Current Weather</b> <b>Safe Work Rules</b>
<b>Plan developers</b> PROMPTS PO, Logs Mgr, Controller	<b>NA</b>
<b>Approval</b> Controller, Ops Director	<b>TBC Company Rep:</b> <b>FOSC:</b> <b>SOSC:</b> <b>POSC:</b>

MILLER ENGINEERS & ASSOCIATES, INC.  
CONSULTING ENGINEERS & LAND SURVEYORS  
FRANKLIN, LA.

OXY #5 MONUMENT

1" = 400'

NOTE:

PROPERTY & LEASE LINES ARE APPROXIMATE ONLY.  
THIS SKETCH DOES NOT REPRESENT A PROPERTY  
BOUNDARY SURVEY.

OXY #4 MONUMENT

APPROX. EDGE  
OF SLURRY PIT  
8/4/12

T.B.M. 6  
TB  
WATER SAMPLES

WELL 11

TANK "W"

TANK "E"

T.B.M. 1

WATER WELL 1

T.B.M. 3C

T.B.M. 3A

WATER WELL 5

WATER WELL 2

T.B.M. 2

WELL 3

T.B.M. 3

WELL 2

T.B.M. 5

T.B.M. 3B

TDC LEASE LINE

WELL 9

GPS BASE

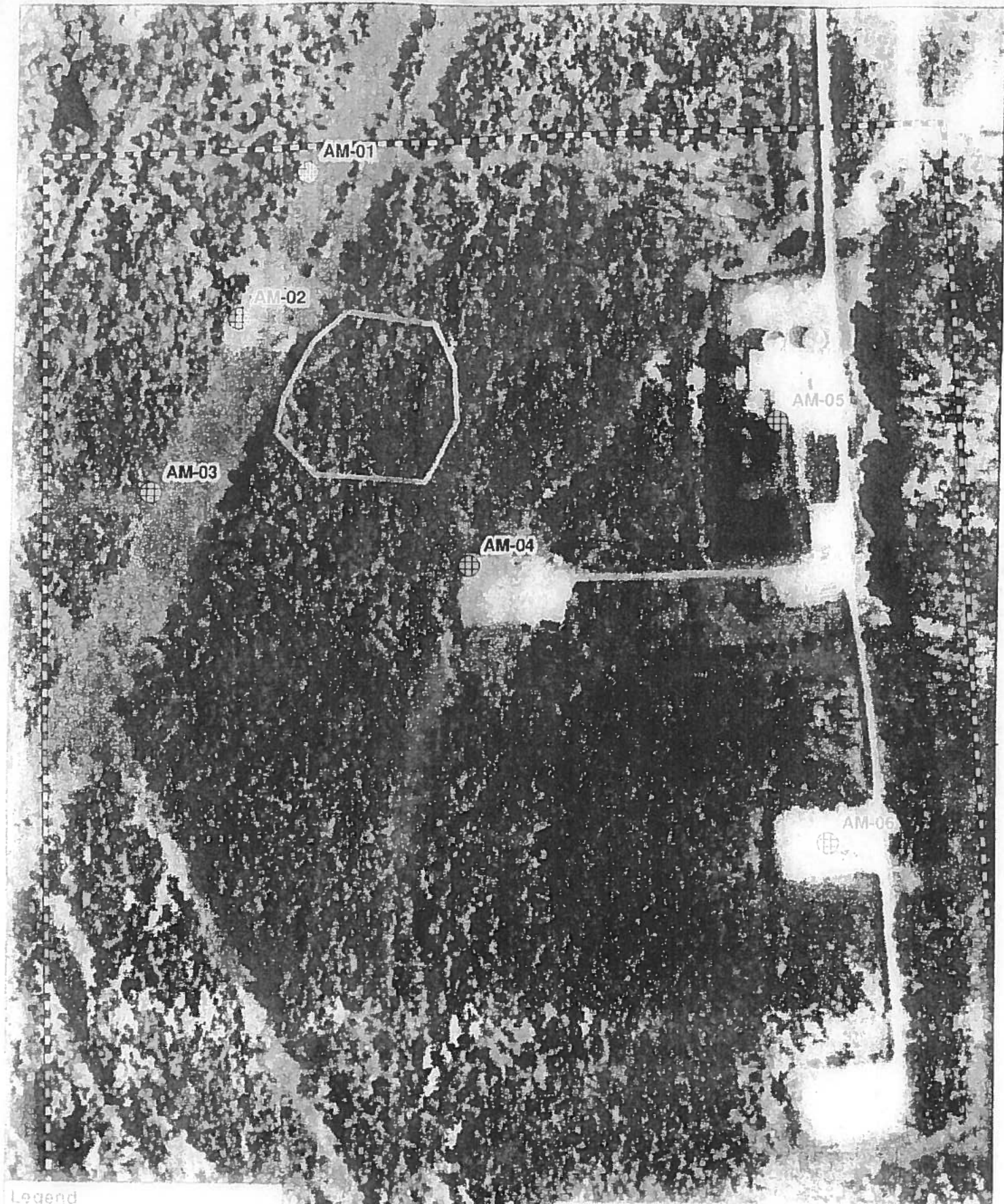
WELL 10

REFERENCE PT.

OXY GPS #4

T.B.M. 4





Legend

- Air Monitoring Location
- Boundary
- Study Area

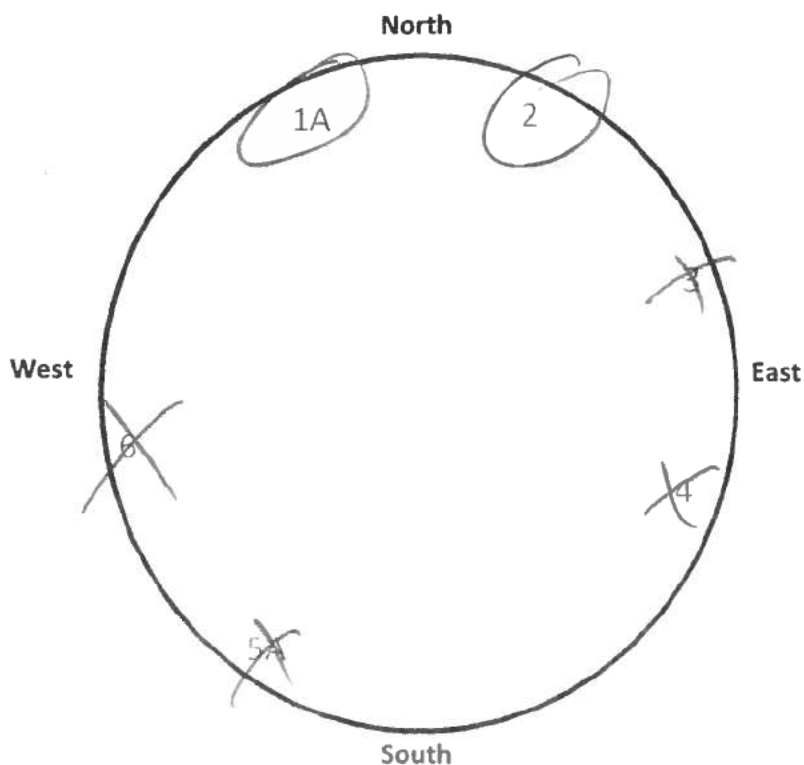
0 125 250 500

TEXAS Air Monitoring Locations  
3-17-2012 - current

# Bayou Corne Sinkhole

Date and Time: 10-1-12

	Time 7:00 p.m.	Time 10:00 p.m.	Time 1:00 a.m.	Time 4:00 a.m.
Tree 1		Good		
Tree 2		Good		
Tree 3		X		
Tree 4		X		
Tree 5		X		
Tree 6		X		



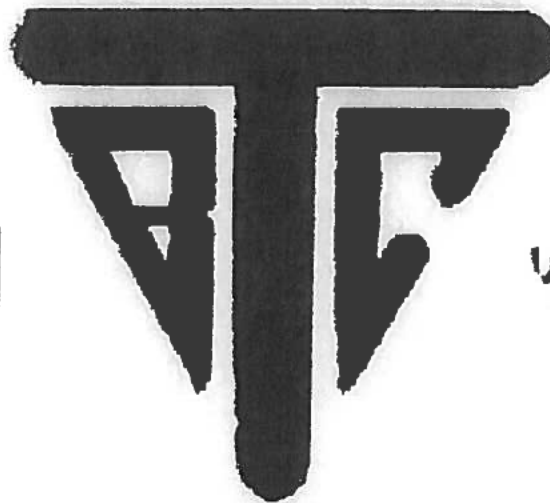
NOTE: Coordinates for each tree are forth coming.

By: Luke D. S.

# TEXAS BRINE COMPANY, LLC AND AFFILIATED COMPANIES

Safe Work Practices

UNDERGROUND  
STORAGE, LLC



UNITEDBRINE

UNITEDBRINE

TEXAS BRINE COMPANY, LLC

UNDERGROUND  
STORAGE, LLC



AMERICAN SOCIETY OF SAFETY

American  
Society of  
Safety



## **Site Specific Safety Plan for Remediation of the Bayou Corne Sink Hole**

The following plan is a site specific plan for the remediation of the Bayou Corne sink hole which will be achieved in two Phases. Phase one will include the construction of an access road to the sink hole which will allow the use of a long reach excavator. The excavator will be used to remove vegetation near the access road and place into roll off boxes. Phase two will consist of placing one or more airboats with attached rakes that will be used to push vegetation towards the access road where it will be removed and placed in roll off boxes. By removing the vegetation this allow us the use of skimmers and absorbent booms to aid in hydrocarbon removal.

### **Site Setting**

The Texas Brine facility is located at 1301 Hwy 70, Belle Rose, LA 70341. The facility is located South of 70. The site is located on raised pads and roads but the property is otherwise swamp. A site map is attached. The nearest hospital Our Lady of the Lake is located in Napoleonville, LA. which is a 15 minute trip.

### **Site Specific Hazards**

The site is located in a swamp setting and potential dangers may be present. Personnel should be aware of

Alligators

Wasps

Snakes

Spiders

### **Emergency Contact**

911 will used in any emergency.

Cell phones on site

### **Site Safety**

#### **Safety Meeting**

Held at the beginning of each shift.

#### **PPE Requirements**

Hard hat

Safety Glasses

Steel toe boots

#### **Air Monitoring**

A system of air monitoring devices have been placed across the property surrounding the sink hole. One air monitoring device is located next to the access road.

Airboats will have hand held monitors on there person at all times when on the sink hole

#### **Spotters and Warnings**

A person or persons armed with an air horn will be placed on site looking for safety issues such as

Leaning trees

Falling trees

Ground Movement

Driver of the truck attached to the roll off box will remain in the truck at all times and will be ready to vacate the access road on signal.

#### **Heavy Equipment**

Long reach excavator

#### **Environmental**

Vegetation will be placed in lined roll off boxes and disposed of.

Airboats will remain inside the containment boom once entered.

Decon of airboats will take place on location pad next to access road.

## SAFETY LOG SIGN-IN SHEET

COMPANY: Texas Brine

LOCATION: Grand Bayou

DATE: 10/2/12

HOURS: \_\_\_\_\_

TOPICS/PURPOSE: \_\_\_\_\_

CONDUCTED BY: Scott Borne

### PERSONS ATTENDING:

PRINT NAME	& SIGNATURE
<u>Dino Gault</u>	<u>[Signature]</u>
<u>Chase LeBlanc</u>	<u>[Signature]</u>
<u>Michael Stewart</u>	<u>[Signature]</u>
<u>Clint Theriot</u>	<u>[Signature]</u>
_____	_____
_____	_____
_____	_____
_____	_____
_____	_____
_____	_____
_____	_____
_____	_____
_____	_____
_____	_____

### PERSONS ATTENDING:

Document Retention Time: Current Year + 1 Preceding Year (if Training Log, 6 Years)  
Document Location: TBCEHS\Texas Brine\EHSS\EHS Manuals\Tbman-Affiliated Cos\Forms  
Document Name: Safety Log Sign-In Sheet.doc  
Revision Date: 10/2010

Universal Time: Tuesday, 02 Oct 2012, 12:28

58°F Belle Rose, Louisiana  Local Weather Like 36k National News

Local National Global Storms Health Travel Community Forecast Current Radar Satellite wxMap iNav Sign-In Help Hurricanes Alerts

## Weather Report

Home » Local » Weather Report

## Belle Rose, Louisiana

Weather Report | Interactive Weather Map | Extended Forecast | Hourly Forecast | Past Observations | Historic Averages | Related

## Current Conditions - °F | °C

As of 6:53 AM on Tuesday 02 Oct 2012 (Local Time) from KBTR Reporting Station



Clear

58°F

Feels Like: 58°

Wind Chill: 58°  
Heat Index: 58°  
Dew Point: 57°  
Humidity: 97%  
Pressure: 29.85"

Ceiling: Unl  
Visibility: 10mi  
Wind: 0mph  
Direction: NA NA  
Gusts: NA

Report Text: KBTR 021153Z AUTO 00000KT 10SM CLR 14/14  
A2985 RMK AO2 SLP106 70001 T01440139 10172 20139 53013  
TSNO 5

View Detailed Observations for the last  
48 Hours · 14 Days

## Today's Forecast

8 AM	M Sunny	64°
9 AM	M Sunny	69°
10 AM	M Sunny	72°

## Local Information

**No Weather Alerts**  
for this location

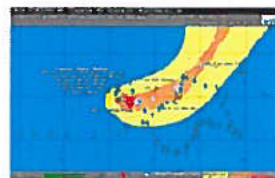
View Complete Hourly Forecast

Radar · Satellite · Surface Analysis

## Tropical Storm Tracking

## Tropical Storm Nadine

ATLANTIC TRACK



## Maps:

- » Current Track
- » Visible Satellite
- » Infrared Satellite

## Bulletins:

- » Advisory
- » Storm Log

## Additional Resources:

- » Watches & Warnings
- » Severe Outlook Today
- » Severe Outlook Tomorrow
- » Lightning Strikes
- » Hurricane Season Summaries

## New Forecast Map Updates

Plan your seasonal activities better

Click here to learn more...



## 10 Day Forecast - °F | °C

View the Detailed Extended Forecast

tue	wed	thu	fri	sat	sun	mon	tue	wed	thu
oct 02	oct 03	oct 04	oct 05	oct 06	oct 07	oct 08	oct 09	oct 10	oct 11
M Sunny	M Sunny	P Cloudy	P Cloudy	M Sunny	P Cloudy	P Cloudy	Sunny	Sunny	Sunny
82° 62°	86° 65°	87° 67°	88° 66°	87° 61°	76° 57°	76° 58°	81° 61°	83° 66°	83° 63°

## Details for Tuesday, October 02

Plenty of sunshine. High 82F. Winds light and variable.

Evening: Partly cloudy skies. Low 62F. Winds light and variable.

UV Index: 8 (Very High) Relative Humidity: 60% Precipitation: 10% Snow: 0% Cloud Coverage: 25%

Sunrise: 6:58 AM

Sunset: 6:48 PM

Moonrise: 8:16 PM

Moonset: 9:12 AM



Moonphase: Waning Gibbous

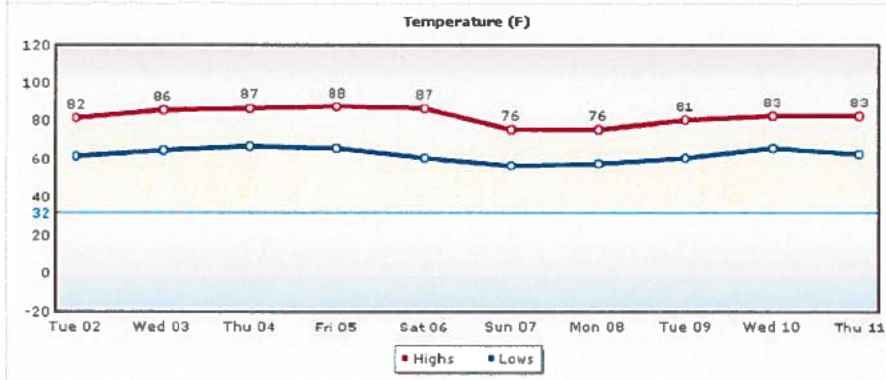


Direction: WSW (247°)

Speed: 5Mph(8Km, 4Kts)

## Daily Forecast Chart

Chart Options: Temperature



[Temperature](#) [UV Index](#) [Relative Humidity](#) [Precipitation](#) [Snow](#) [Clouds](#) [Wind](#)

[Daily Forecast](#) [Hourly Forecast](#) [Past Observations](#) [Historic Averages](#)

**More from Intellicast**



Check Out Our  
Interactive Weather Map

**Articles**

- [Local Weather Maps](#)
- [US Weather Maps](#)
- [US Current Weather](#)
- [Global Weather Maps](#)
- [Weather Analysis Charts](#)
- [Active Storm Track](#)
- [Weather Tools](#)

**Weather Center**



**Weather Alerts**  
Current National Weather Service Watches and Warnings by type and state throughout the United States.



**Ski & Snow**  
The Ski & Snow Section is where you can get the latest ski resort conditions and snow forecasts.

**Woman is 53 But Looks 27**

Mom publishes free facelift secret that has angered drs...

**Power Companies Fear This**

47 y/o Man Discovers Weird Trick To Cut Power Bill By 75%. Watch Video

**Weird Loophole in Texas:**

If You Pay For Car Insurance You Better Read This Now...

Search the Web:

Search

Powered by [Local](#) | [National](#) | [Global](#) | [Storms](#) | [Health](#) | [Travel](#) | [Community](#)[About Us](#) | [Weather on your Site](#) | [Advertise with Us](#) | [Contact Us](#) | [Members](#) | [Help](#) | [Site Map](#) | [News](#)Professional Weather Solutions: [Aviation](#) | [Energy](#) | [Media](#)

Intellicast.com: The Authority in Expert Weather

Your use of this site constitutes your acceptance of the [Terms of Use](#) and [Privacy Policy](#)  
2012 WSI Corporation - v4.5.001:ICAST-WEB1