

INCIDENT ACTION PLAN

Be brief and concise with your entries

Location Bayou Corne Sink Hole	Control Level Company Supervisory	Operational Period From 10/4/12 To 10/5/12
---	--	--

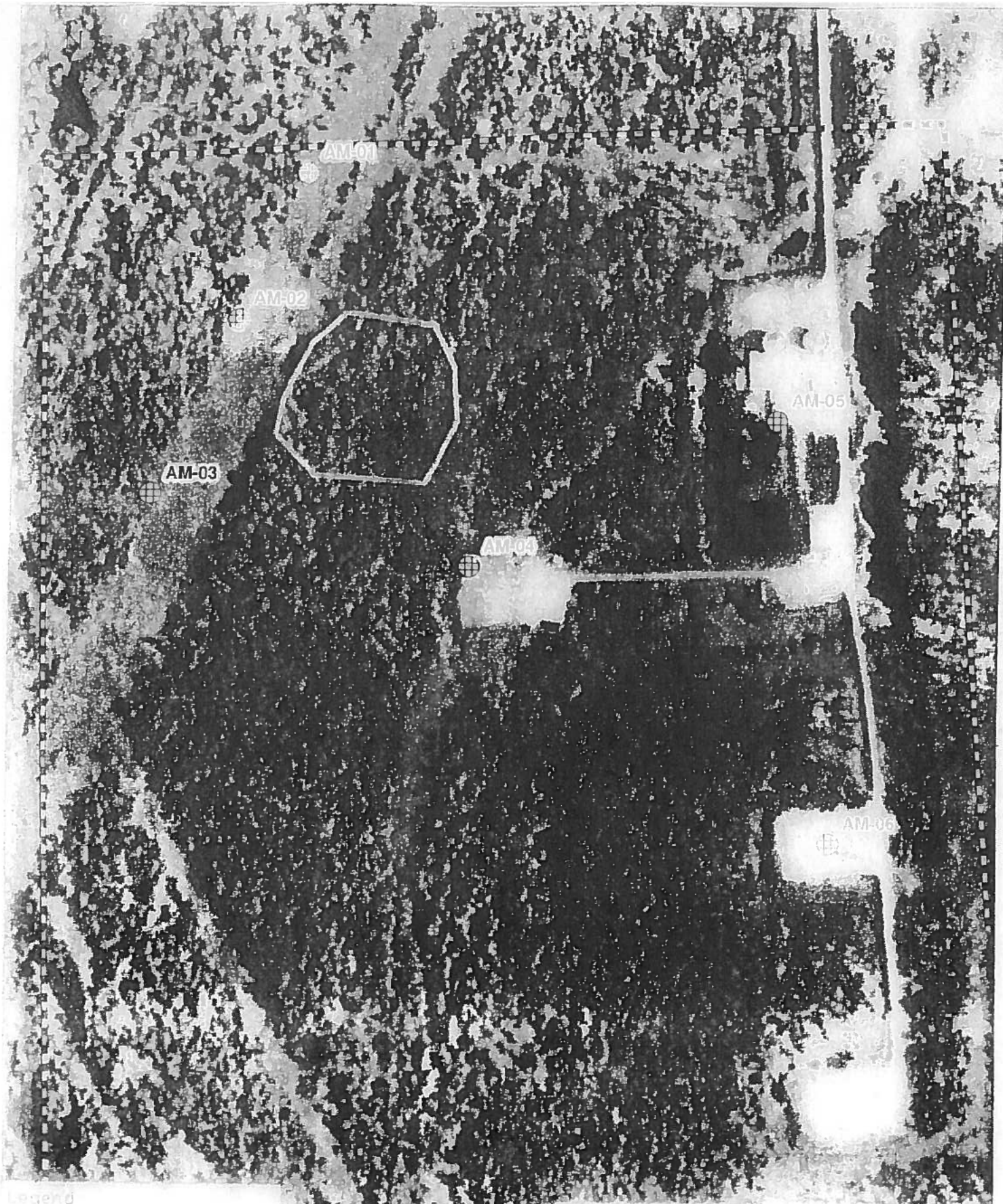
1.0 SITUATION Disease, community, environment PROMPTS: Weather, disease trends, Resources, Hazards & safety REFERENCE: Maps, weather reports, Sitreps, appreciation, warnings, alerts	CURRENT Sunny
	PREDICT Sunny
2.0 OBJECTIVES (or MISSION) PROMPTS: Time & space REFERENCE: Appreciation – control options, courses open to disease	CURRENT Objective 1 - Gas Monitoring: 6 Gas Monitors have been set up in the field and are obtaining data on a continuous basis. (See Attached Map for Locations) The monitors are running on batteries which must be changed out every morning. Three monitors are located in the swamp and are required to be reached via airboats launched from TBC facilities. The continuous monitoring data is collected at an office trailer located at Texas Brine Grand Bayou Facility. Monitoring the information on a 24 hours basis. Monitoring is being recorded for LEL, VOC, H2S and O2. Objective 2 - Elevation survey taking place once a week. Objective 3- Sink hole observation. See attached Map. Remediation plan has begun 10/1/12 @ 7:00 am See Attached Plan.
	ALTERNATE
3.0 EXECUTION add safety information as appropriate	
GENERAL OUTLINE PROMPTS: Strategies & tactics (current/proposed/alternate) REFERENCE: Appreciation, Control Options	Safety Information: See Attached Safe Work Rules Reference IAP dated 8/9/12 Additional to our Safe Work Rules for this project we are adding the awareness of insects, reptiles and animals. Inspect location for flammability Daily Safety Meetings PPE Required on site: Respirator w/ VOC Cartridge, Gloves for sampling, eye protection, life preservers, hearing protection.

GROUPINGS	NA
TASKS Including PR & Media	Same as above
COORDINATING INSTRUCTIONS PROMPTS: Timings, routes, assembly areas, staging areas	Texas Brine Grand Bayou Facility will be used as staging area.
4.0 ADMINISTRATION (Logistics support)	
PROMPTS: Unit names, locations, contact names, phone no's, timings, duties/tasks, routes, suppliers, quantities, status (required, organised, stand by, enroute)	
SUPPLY WHO, WHAT, WHERE, WHEN of resources not readily available	NA
GROUND SUPPORT Transport of personnel, traffic mgt, refuelling, mechanical repair/maintenance	NA
COMMUNICATIONS Installation, maintenance, technical advice	Cell Phone & Landline Communications: Kenneth Blanchard – Area Manager – 985- (985-) kblanchard@texasbrine.com Scott Borne – Facility Manager – 985- (985-) sborne@texasbrine.com Joel Miller, PE – Consultant – 337- (337-) joel.miller@cox-internet.com Bruce Martin – Operations/PR – 713- (281-) bmartin@texasbrine.com Mark Cartwright – Technical/Engineering – 713- (281-) mcartwright@unitedbrine.com Scott Whitelaw – Environmental/Safety – 713- (713-) swhitelaw@tum.com
STAGING AREA/	Texas Brine Grand Bayou Facility

FCP Setting up, communications, staffing	1301 Hwy 70 South, Belle Rose, La 70341
5.0 ADMINISTRATION (Logistics services)	
PROMPTS: Unit names, locations, contact names, phone no's, timings, duties/tasks, routes, suppliers, quantities, status (required, organised, stand by, enroute)	
FACILITIES Security, waste, cleaning	NA
CATERING	NA
OH&S/MEDICAL Medical plan, first aid plan	Call 911
FINANCE	NA
TRAVEL	NA
INDUCTION/ TRAINING	NA
ACCOMMODATION	NA
6.0 CONTROL, COORDINATION & COMMUNICATION	
CONTROL & COORDINATION STRUCTURE REFERENCE Structural Chart	Plant Management Supervision / Contractor Work
COORDINATION & LIAISON Local knowledge, police, agency reps, emergency mgt reps	NA

<p>COMMUNICATIONS</p> <p>PROMPTS Communications structure, operational comms plan, information mgt</p>	<p>Plant Management – Contractor Communication via Cell Phone</p>
---	--

EXTRAS	
<p>Attachments</p> <p>PROMPTS:: maps, weather, organisational charts, resources, comms diagram</p>	<p>Site Map Current Weather Safe Work Rules</p>
<p>Plan developers</p> <p>PROMPTS PO, Logs Mgr, Controller</p>	<p>NA</p>
<p>Approval</p> <p>Controller, Ops Director</p>	<p>TBC Company Rep: FOSC: SOSC: POSC:</p>



Legend

0 125 250 500 Feet

Table 3.1 - Air Monitoring Locations
3/17/2012 - current

MILLER ENGINEERS & ASSOCIATES, INC.
CONSULTING ENGINEERS & LAND SURVEYORS
FRANKLIN, LA.

OXY 5 MONUMENT

1" = 400'

NOTE:

PROPERTY & LEASE LINES ARE APPROXIMATE ONLY.
THIS SKETCH DOES NOT REPRESENT A PROPERTY
BOUNDARY SURVEY.

OXY #4 MONUMENT

APPROX. EDGE
OF SLURRY PIT
8/4/12

T.B. WATER SAMPLES

WELL 1

TANK "W"

TANK "E"

T.B.M. 1

WATER WELL

T.B.M. 3A

T.B.M. 3C

WATER WELL 5

WATER WELL 2

WELL 3

T.B.M. 3

WELL 4

T.B.M. 2

T.B.M. 5

T.B.M. 3B

TBC LEASE LINE

WELL 9

GPS BASE

WELL 10

REFERENCE PT

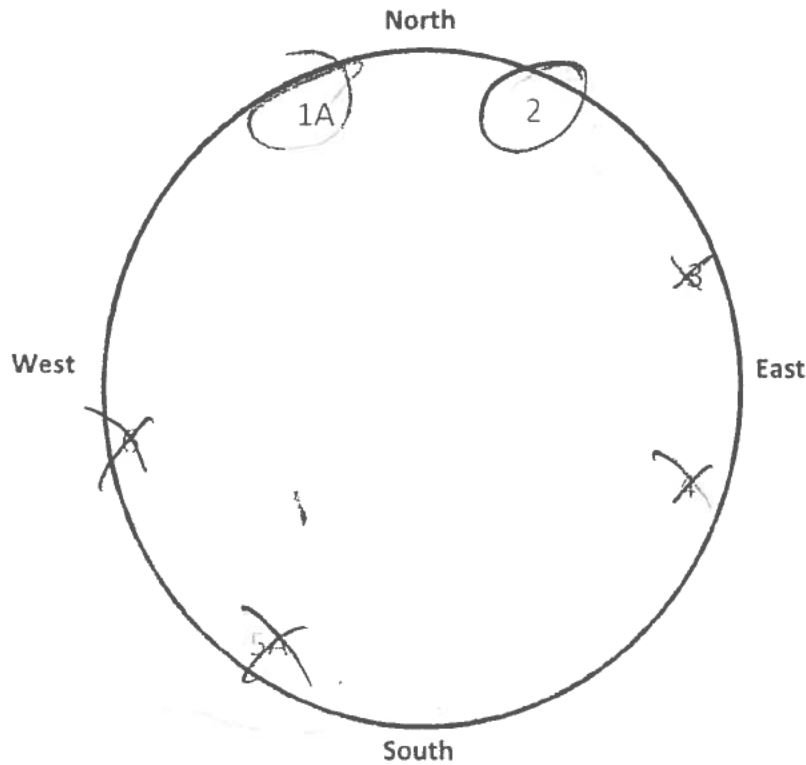
OXY GPS #4

T.B.M. 4

Bayou Corne Sinkhole

Date and Time: 10-3-12

	Time 7:00 p.m.	Time 10:00 p.m.	Time 1:00 a.m.	Time 4:00 a.m.
Tree 1	Good			
Tree 2	Good			
Tree 3	X			
Tree 4	X			
Tree 5	X			
Tree 6	X			



NOTE: Coordinates for each tree are forth coming.

By: Antoine Dijk

TEXAS BRINE COMPANY, LLC AND AFFILIATED COMPANIES

Safe Work Practices

UNDERGROUND
STORAGE, LLC



UNITEDBRINE

UNITEDBRINE

TEXAS BRINE COMPANY, LLC

THE SERVICE CENTER
SERVICE CENTER, LLC



AMERICAN BRINE ASSOCIATION

American
Brine
Association

Site Specific Safety Plan for Remediation of the Bayou Corne Sink Hole

The following plan is a site specific plan for the remediation of the Bayou Corne sink hole which will be achieved in two Phases. Phase one will include the construction of an access road to the sink hole which will allow the use of a long reach excavator. The excavator will be used to remove vegetation near the access road and place into roll off boxes. Phase two will consist of placing one or more airboats with attached rakes that will be used to push vegetation towards the access road where it will be removed and placed in roll off boxes. By removing the vegetation this allow us the use of skimmers and absorbent booms to aid in hydrocarbon removal.

Site Setting

The Texas Brine facility is located at 1301 Hwy 70, Belle Rose, LA 70341. The facility is located South of 70. The site is located on raised pads and roads but the property is otherwise swamp. A site map is attached. The nearest hospital Our Lady of the Lake is located in Napoleonville, LA. which is a 15 minute trip.

Site Specific Hazards

The site is located in a swamp setting and potential dangers may be present. Personnel should be aware of

Alligators

Wasps

Snakes

Spiders

Emergency Contact

911 will used in any emergency.

Cell phones on site

Site Safety

Safety Meeting

Held at the beginning of each shift.

PPE Requirements

Hard hat

Safety Glasses

Steel toe boots

Air Monitoring

A system of air monitoring devices have been placed across the property surrounding the sink hole. One air monitoring device is located next to the access road.

Airboats will have hand held monitors on there person at all times when on the sink hole

Spotters and Warnings

A person or persons armed with an air horn will be placed on site looking for safety issues such as

Leaning trees

Falling trees

Ground Movement

Driver of the truck attached to the roll off box will remain in the truck at all times and will be ready to vacate the access road on signal.

Heavy Equipment

Long reach excavator

Environmental

Vegetation will be placed in lined roll off boxes and disposed of.

Airboats will remain inside the containment boom once entered

Decon of airboats will take place on location pad next to access road.

SAFETY LOG SIGN-IN SHEET

COMPANY: Texas Brine

LOCATION: Grand Bayou

DATE: 10/4/12

HOURS: _____

TOPICS/PURPOSE: _____

CONDUCTED BY: Scott Borne

PERSONS ATTENDING:

PRINT NAME	& SIGNATURE
<u>Dino Granel</u>	<u>[Signature]</u>
<u>Michael Stewart</u>	<u>[Signature]</u>
<u>Kelvin Gray</u>	<u>[Signature]</u>
<u>Seth Jagle</u>	<u>[Signature]</u>
<u>Chase LePlanc</u>	<u>[Signature]</u>
<u>Mark Landos</u>	<u>[Signature]</u>
_____	_____
_____	_____
_____	_____
_____	_____
_____	_____
_____	_____
_____	_____
_____	_____

PERSONS ATTENDING:

Document Retention Time: Current Year + 1 Preceding Year (if Training Log, 6 Years)
Document Location: TBCEHS\Texas Brine\EHSS\EHS Manuals\Tbeman-Affiliated Cos\Forms
Document Name: Safety Log Sign-In Sheet.doc
Revision Date: 10/2010

Universal Time: Thursday, 04 Oct 2012, 12:51

63°F

Belle Rose, Louisiana ▾

70341

Local Weather

Like 36k

National News

Local National Global Storms Health Travel Community Forecast Current Radar Satellite wxMap iNav

Sign-In Help Hurricanes Alerts

Weather Report

Home » Local » Weather Report

Belle Rose, Louisiana

Weather Report | Interactive Weather Map | Extended Forecast | Hourly Forecast | Past Observations | Historic Averages | Related ▾

Current Conditions - °F | °C

As of 6:53 AM on Thursday 04 Oct 2012 (Local Time) from KBTR Reporting Station

Haze
63°F
 Feels Like: 63°
 Wind Chill: 63°
 Heat Index: 63°
 Dew Point: 62°
 Humidity: 97%
 Pressure: 30.17"
 Ceiling: Unl
 Visibility: 4mi
 Wind: 3mph
 Direction: 60° (ENE)
 Gusts: NA
 Report Text: KBTR 041153Z AUTO 06003KT 4SM BR CLR 17/17 A3017 RMK AO2 SLP217 T01720167 10189 20172 51013 TSHO \$

Today's Forecast
 8 AM Sunny 71°
 9 AM Sunny 75°
 10 AM Sunny 79°

Local Information
 No Weather Alerts for this location
 Radar · Satellite · Surface Analysis

View Detailed Observations for the last 48 Hours · 14 Days

View Complete Hourly Forecast »

Tropical Storm Nadine

Current Track | Visible | Infrared

Tropical Storm Oscar

Current Track | Visible | Infrared

View Complete Tropical Storm Track List »

New Forecast Map Updates

Plan your seasonal activities better

Click here to learn more...

10 Day Forecast - °F | °C

View the Detailed Extended Forecast »

thu	fri	sat	sun	mon	tue	wed	thu	fri	sat
oct 04	oct 05	oct 06	oct 07	oct 08	oct 09	oct 10	oct 11	oct 12	oct 13
88° 65°	89° 66°	88° 64°	76° 57°	77° 58°	84° 65°	86° 65°	84° 64°	84° 65°	84° 66°

Details for Thursday, October 04

Sunny. High 88F. Winds E at 5 to 10 mph.

Evening: Generally clear. Low near 65F. Winds light and variable.

UV Index: 8 (Very High)

Relative Humidity: 65%

Precipitation: 0%

Snow: 0%

Cloud Coverage: 5%

Sunrise: 7:00 AM

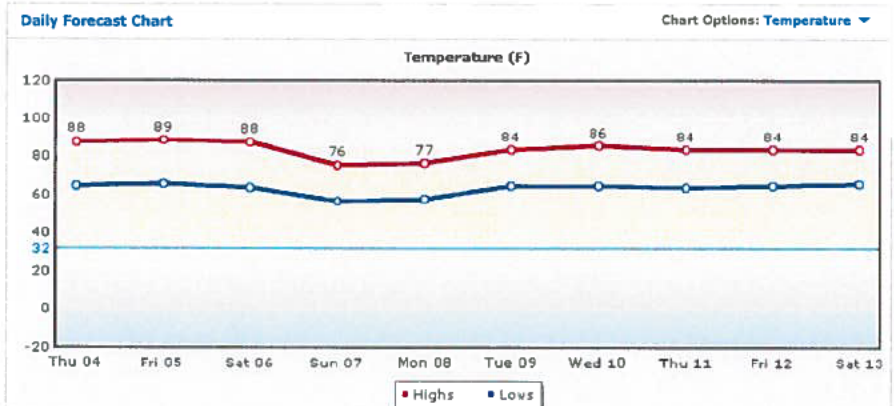
Sunset: 6:45 PM

Moonrise: 9:40 PM

Moonset: 10:58 AM

Moonphase: Waning Gibbous
 Direction: E (100°)


Speed: 6Mph(9km, 5Kts)



[Temperature](#)
[UV Index](#)
[Relative Humidity](#)
[Precipitation](#)
[Snow](#)
[Clouds](#)
[Wind](#)

[Daily Forecast](#)
[Hourly Forecast](#)
[Past Observations](#)
[Historic Averages](#)

More from Intellicast




Check Out Our Interactive Weather Map


Articles

- Local Weather Maps
- US Weather Maps
- US Current Weather
- Global Weather Maps
- Weather Analysis Charts
- Active Storm Track
- Weather Tools

Weather Center



Weather Alerts
Current National Weather Service Watches and Warnings by type and state throughout the United States.



Ski & Snow
The Ski & Snow Section is where you can get the latest ski resort conditions and snow forecasts.



Spring - New rule allows many Texas residents to get car insurance at half-price.



Nature's defense against unhappiness...



Stores across U.S. selling out of this new 'miracle' fat fighter.

Search the Web:

Search

Powered by Google

[Local](#) | [National](#) | [Global](#) | [Storms](#) | [Health](#) | [Travel](#) | [Community](#)
[About Us](#) | [Weather on your Site](#) | [Advertise with Us](#) | [Contact Us](#) | [Members](#) | [Help](#) | [Site Map](#) | [News](#)

Professional Weather Solutions: [Aviation](#) | [Energy](#) | [Media](#)

Intellicast.com: The Authority in Expert Weather

Your use of this site constitutes your acceptance of the [Terms of Use](#) and [Privacy Policy](#)
2012 WSI Corporation - v4.5.001:ICAST-WEB4