

**INCIDENT ACTION PLAN**

Be brief and concise with your entries

<b>Location</b> <b>Bayou Corne</b> <b>Sink Hole</b>	<b>Control Level</b> <b>Company Supervisory</b>	<b>Operational Period</b> <b>From 10/5/12</b> <b>To 10/6/12</b>
---	--	--

<b>1.0 SITUATION</b> Disease, community, environment  PROMPTS: Weather, disease trends, Resources, Hazards & safety  REFERENCE: Maps, weather reports, Sitreps, appreciation, warnings, alerts	<b>CURRENT</b> Sunny  <b>PREDICT</b> Sunny
<b>2.0 OBJECTIVES (or MISSION)</b>  PROMPTS: Time & space  REFERENCE: Appreciation – control options, courses open to disease	<b>CURRENT</b> <b>Objective 1 - Gas Monitoring:</b>  6 Gas Monitors have been set up in the field and are obtaining data on a continuous basis. (See Attached Map for Locations)  The monitors are running on batteries which must be changed out every morning. Three monitors are located in the swamp and are required to be reached via airboats launched from TBC facilities.  The continuous monitoring data is collected at an office trailer located at Texas Brine Grand Bayou Facility. Monitoring the information on a 24 hours basis. Monitoring is being recorded for LEL, VOC, H2S and O2.  <b>Objective 2 - Elevation survey</b> taking place once a week.  <b>Objective 3- Sink hole observation.</b> See attached Map. Remediation plan has begun 10/1/12 @ 7:00 am See Attached Plan. No work on the sink hole will take place this weekend 10/6/12 and 10/7/12  <b>ALTERNATE</b>
<b>3.0 EXECUTION</b> add safety information as appropriate	
<b>GENERAL OUTLINE</b>  PROMPTS: Strategies & tactics (current/proposed/alternate)  REFERENCE: Appreciation, Control Options	<b>Safety Information: See Attached Safe Work Rules</b> <b>Reference IAP dated 8/9/12</b> <b>Additional to our Safe Work Rules for this project we are adding the awareness of insects, reptiles and animals.</b> <b>Inspect location for flammability</b> <b>Daily Safety Meetings</b>

	<b>PPE Required on site: Respirator w/ VOC Cartridge, Gloves for sampling, eye protection, life preservers, hearing protection.</b>
<b>GROUPINGS</b>	<b>NA</b>
<b>TASKS</b> Including PR & Media	<b>Same as above</b>
<b>COORDINATING INSTRUCTIONS</b>  PROMPTS: Timings, routes, assembly areas, staging areas	<b>Texas Brine Grand Bayou Facility will be used as staging area.</b>
<b>4.0 ADMINISTRATION</b> (Logistics support)  PROMPTS: Unit names, locations, contact names, phone no's, timings, duties/tasks, routes, suppliers, quantities, status (required, organised, stand by, enroute)	
<b>SUPPLY</b> WHO, WHAT, WHERE, WHEN of resources not readily available	<b>NA</b>
<b>GROUND SUPPORT</b> Transport of personnel, traffic mgt, refuelling, mechanical repair/maintenance	<b>NA</b>
<b>COMMUNICATIONS</b> Installation, maintenance, technical advice	<b>Cell Phone &amp; Landline Communications:</b> <b>Kenneth Blanchard – Area Manager – 985- (985- )</b> <b>kblanchard@texasbrine.com</b> <b>Scott Borne – Facility Manager – 985- (985- )</b> <b>sborne@texasbrine.com</b> <b>Joel Miller, PE – Consultant – 337- (337- ) joel.miller@cox-internet.com</b> <b>Bruce Martin – Operations/PR – 713- (281- )</b> <b>bmartin@texasbrine.com</b> <b>Mark Cartwright – Technical/Engineering – 713- (281- )</b> <b>mcartwright@unitedbrine.com</b> <b>Scott Whitelaw – Environmental/Safety – 713- (713- )</b> <b>swhitelaw@tum.com</b>

<b>STAGING AREA/ FCP</b> Setting up, communications, staffing	<b>Texas Brine Grand Bayou Facility</b> <b>1301 Hwy 70 South, Belle Rose, La 70341</b>
<b>5.0 ADMINISTRATION</b> (Logistics services)	
PROMPTS: Unit names, locations, contact names, phone no's, timings, duties/tasks, routes, suppliers, quantities, status (required, organised, stand by, enroute)	
<b>FACILITIES</b> Security, waste, cleaning	<b>NA</b>
<b>CATERING</b>	<b>NA</b>
<b>OH&amp;S/MEDICAL</b> Medical plan, first aid plan	<b>Call 911</b>
<b>FINANCE</b>	<b>NA</b>
<b>TRAVEL</b>	<b>NA</b>
<b>INDUCTION/ TRAINING</b>	<b>NA</b>
<b>ACCOMMODATION</b>	<b>NA</b>
<b>6.0 CONTROL, COORDINATION &amp; COMMUNICATION</b>	
<b>CONTROL &amp; COORDINATION STRUCTURE</b>  REFERENCE Structural Chart	<b>Plant Management Supervision / Contractor Work</b>
<b>COORDINATION &amp; LIAISON</b>  Local knowledge, police, agency	<b>NA</b>

reps, emergency mgt reps	
<b>COMMUNICATIONS</b>  PROMPTS Communications structure, operational comms plan, information mgt	<b>Plant Management – Contractor Communication via Cell Phone</b>

<b>EXTRAS</b>	
<b>Attachments</b> PROMPTS: maps, weather, organisational charts, resources, comms diagram	<b>Site Map</b> <b>Current Weather</b> <b>Safe Work Rules</b>
<b>Plan developers</b> PROMPTS PO, Logs Mgr, Controller	<b>NA</b>
<b>Approval</b> Controller, Ops Director	<b>TBC Company Rep:</b> <i>David Corne</i> <b>FOSC:</b> <b>SOSC:</b> <b>POSC:</b>

MILLER ENGINEERS & ASSOCIATES, INC.  
CONSULTING ENGINEERS & LAND SURVEYORS  
FRANKLIN, LA.

OXY #5 MONUMENT

1" = 400'

NOTE:

PROPERTY & LEASE LINES ARE APPROXIMATE ONLY.  
THIS SKETCH DOES NOT REPRESENT A PROPERTY  
BOUNDARY SURVEY.

OXY #4 MONUMENT

APPROX. EDGE  
OF SLURRY PIT  
8/4/12

IB  
WATER SAMPLES

WELL 11

TANK "W"

TANK "E"

T.B.M. 1

WATER WELL

T.B.M. 3A

T.B.M. 3C

WATER WELL 5

WATER WELL 2

WELL 3

T.B.M. 3

WELL 1

T.B.M. 5

T.B.M. 3B

IBC LEASE LINE

WELL 9

GPS BASE

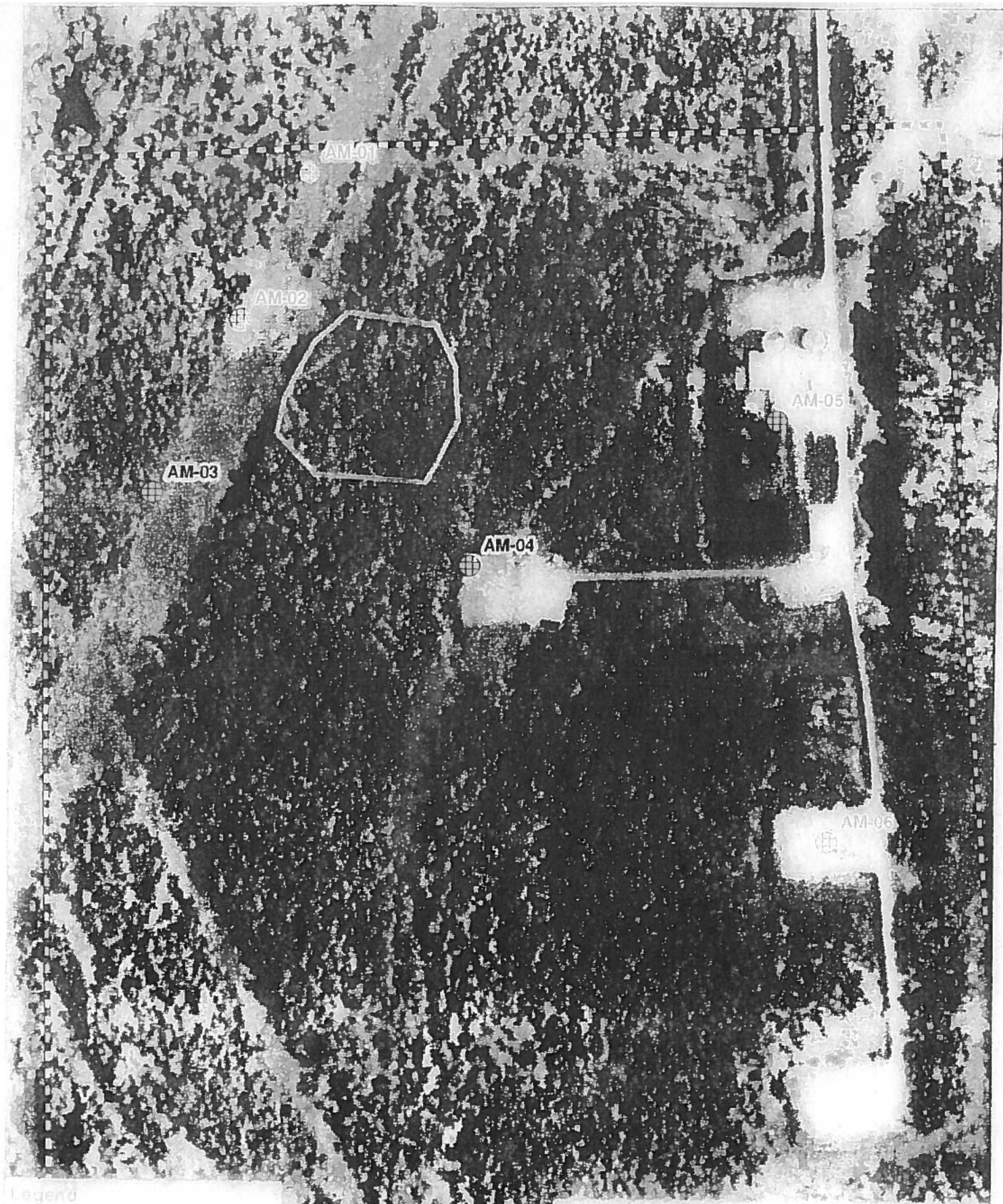
WELL 10

REFERENCE PT

OXY GPS #4

T.B.M. 4





Legend

0 125 250 500

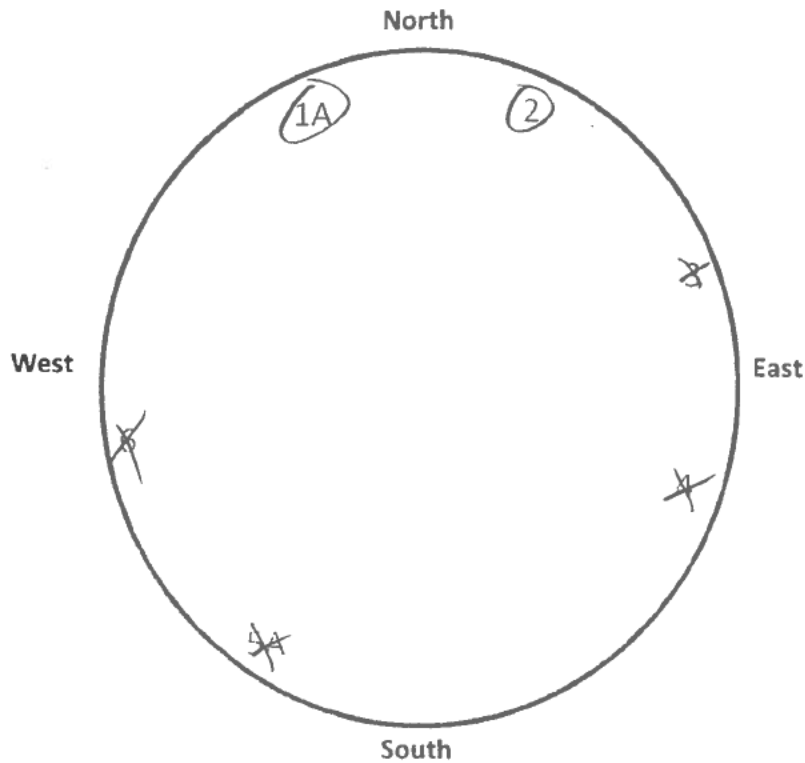
Top 13 Fine Air Monitoring Locations  
3/12/2012 - current

# Bayou Corne Sinkhole

Date and Time:

10/4/12

	Time 7:00 p.m.	Time 10:00 p.m.	Time 1:00 a.m.	Time 4:00 a.m.
Tree 1		OK		
Tree 2		OK		
Tree 3		X		
Tree 4		X		
Tree 5		X		
Tree 6		X		



NOTE: Coordinates for each tree are forth coming.

By: Adam Bertone

## **Site Specific Safety Plan for Remediation of the Bayou Corne Sink Hole**

The following plan is a site specific plan for the remediation of the Bayou Corne sink hole which will be achieved in two Phases. Phase one will include the construction of an access road to the sink hole which will allow the use of a long reach excavator. The excavator will be used to remove vegetation near the access road and place into roll off boxes. Phase two will consist of placing one or more airboats with attached rakes that will be used to push vegetation towards the access road where it will be removed and placed in roll off boxes. By removing the vegetation this allow us the use of skimmers and absorbent booms to aid in hydrocarbon removal.

### **Site Setting**

The Texas Brine facility is located at 1301 Hwy 70, Belle Rose, LA 70341. The facility is located South of 70. The site is located on raised pads and roads but the property is otherwise swamp. A site map is attached. The nearest hospital Our Lady of the Lake is located in Napoleonville, LA. which is a 15 minute trip.

### **Site Specific Hazards**

The site is located in a swamp setting and potential dangers may be present. Personnel should be aware of

Alligators

Wasps

Snakes

Spiders

### **Emergency Contact**

911 will used in any emergency.

Cell phones on site

### **Site Safety**

#### **Safety Meeting**

Held at the beginning of each shift.

#### **PPE Requirements**

Hard hat

Safety Glasses

Steel toe boots

#### **Air Monitoring**

A system of air monitoring devices have been placed across the property surrounding the sink hole. One air monitoring device is located next to the access road.

Airboats will have hand held monitors on there person at all times when on the sink hole

#### **Spotters and Warnings**

A person or persons armed with an air horn will be placed on site looking for safety issues such as

Leaning trees

Falling trees

Ground Movement

Driver of the truck attached to the roll off box will remain in the truck at all times and will be ready to vacate the access road on signal.

#### **Heavy Equipment**

Long reach excavator

#### **Environmental**

Vegetation will be placed in lined roll off boxes and disposed of.

Airboats will remain inside the containment boom once entered

Decon of airboats will take place on location pad next to access road.



## SAFETY LOG SIGN-IN SHEET

COMPANY: Texas Brine

LOCATION: Grand Bayou

DATE: 10/5/12

HOURS: \_\_\_\_\_

TOPICS/PURPOSE: \_\_\_\_\_

CONDUCTED BY: Scott Borne

### PERSONS ATTENDING:

PRINT NAME	& SIGNATURE
<u>Seth Doyle</u>	<u>[Signature]</u>
<u>Dino Gaudet</u>	<u>[Signature]</u>
<u>Michael Stewart</u>	<u>[Signature]</u>
<u>Mark Landos</u>	<u>Mark Landos</u>
<u>Steven Brasseur</u>	<u>[Signature]</u>
<u>Chase LeBlanc</u>	<u>Chase LeBlanc</u>
_____	_____
_____	_____
_____	_____
_____	_____
_____	_____
_____	_____
_____	_____

### PERSONS ATTENDING:

Document Retention Time: Current Year + 1 Preceding Year (if Training Log, 6 Years)  
Document Location: TBCEHS\Texas Brine\EHSS\EHS Manuals\Tbeman-Affiliated Cos\Forms  
Document Name: Safety Log Sign-In Sheet.doc  
Revision Date: 10/2010

# TEXAS BRINE COMPANY, LLC AND AFFILIATED COMPANIES

Safe Work Practices

UNDERGROUND  
STORAGE, LLC



UNITEDBRINE

UNITEDBRINE

TEXAS BRINE COMPANY, LLC

THE TEXAS BRINE COMPANY  
SERVICE MANAGEMENT, LLC



THE TEXAS BRINE COMPANY

America in  
a family  
of friends

Universal Time: Friday, 05 Oct 2012, 12:59

66°F Belle Rose, Louisiana

Enter City, State, Country or U.S. Zip code or Airport Id

Local Weather

Like 36k

National News

Local National Global Storms Health Travel Community Forecast Current Radar Satellite wxMap iNav

Sign-In

Help

Hurricanes

Alerts

## Weather Report

Home » Local » Weather Report

### Belle Rose, Louisiana

Weather Report | Interactive Weather Map | Extended Forecast | Hourly Forecast | Past Observations | Historic Averages | Related

#### Current Conditions - °F | °C

As of 7:53 AM on Friday 05 Oct 2012 (Local Time) from KBTR Reporting Station



Moderate Fog

66°F

Feels Like: 66°

Wind Chill: 65°  
Heat Index: 65°  
Dew Point: 65°  
Humidity: 100%  
Pressure: 30.15"

Ceiling: 100  
Visibility: 0mi  
Wind: 5mph  
Direction: 50° (NE)  
Gusts: NA

Report Text: KBTR 051253Z 05004KT M1/4SM FG VV001 19/19 A3015 RMK AO2 SLP208 T01890189 RVRN0

View Detailed Observations for the last  
48 Hours · 14 Days

#### Today's Forecast

8 AM Sunny 71°  
9 AM Sunny 74°  
10 AM Sunny 78°

View Complete Hourly Forecast »

#### Local Information



**Severe Weather Alert!**  
View current alerts »

Radar · Satellite · Surface Analysis

#### Tropical Storm Tracking

##### Tropical Storm Oscar ATLANTIC TRACK



#### Maps:

- » Current Track
- » Visible Satellite
- » Infrared Satellite

#### Bulletins:

- » Advisory
- » Storm Log

#### Additional Resources:

- » Watches & Warnings
- » Severe Outlook Today
- » Severe Outlook Tomorrow
- » Lightning Strikes
- » Hurricane Season Summaries

#### New Forecast Map Updates Plan your seasonal activities better

Click here to learn more...



#### 10 Day Forecast - °F | °C

View the Detailed Extended Forecast »

fr	sat	sun	mon	tue	wed	thu	fri	sat	sun
oct 05	oct 06	oct 07	oct 08	oct 09	oct 10	oct 11	oct 12	oct 13	oct 14
Sunny	M Sunny	P Cloudy	Sunny	M Sunny	P Cloudy	M Sunny	Sunny	P Cloudy	P Cloudy
89° 65°	88° 62°	75° 57°	77° 59°	83° 65°	86° 67°	86° 67°	85° 66°	83° 65°	84° 65°

#### Details for Friday, October 05

Sunny, High 89F. Winds light and variable.

Evening: Generally clear, Low around 65F. Winds light and variable.

UV Index: 8 (Very High) Relative Humidity: 62% Precipitation: 10% Snow: 0% Cloud Coverage: 0%

Sunrise: 7:00 AM  
Sunset: 6:44 PM

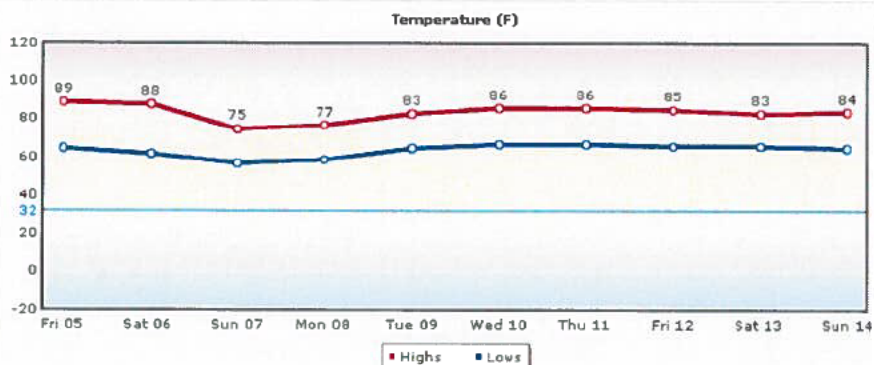
Moonrise: 10:27 PM  
Moonset: 11:48 AM

Moonphase:  
Waning Gibbous

Direction: E (90°)  
Speed: 5Mph(8Km, 4Kis)

#### Daily Forecast Chart

Chart Options: Temperature



[Temperature](#)
[UV Index](#)
[Relative Humidity](#)
[Precipitation](#)
[Snow](#)
[Clouds](#)
[Wind](#)

[Daily Forecast](#)
[Hourly Forecast](#)
[Past Observations](#)
[Historic Averages](#)

**More from Intellicast**



Check Out Our Interactive Weather Map

**Articles**

- Local Weather Maps
- US Weather Maps
- US Current Weather
- Global Weather Maps
- Weather Analysis Charts
- Active Storm Track
- Weather Tools

**Weather Center**



**Weather Alerts**  
Current National Weather Service Watches and Warnings by type and state throughout the United States.



**Ski & Snow**  
The Ski & Snow Section is where you can get the latest ski resort conditions and snow forecasts.



Spring - New rule allows many Texas residents to get car insurance at half-price.



How To Quickly Boost Testosterone So You Feel Great Again.



(Texas): This 1 weird "loophole" has become the car insurance companies worst nightmare!

Search the Web:

Powered by

[Local](#) | 
 [National](#) | 
 [Global](#) | 
 [Storms](#) | 
 [Health](#) | 
 [Travel](#) | 
 [Community](#)

[About Us](#) | 
 [Weather on your Site](#) | 
 [Advertise with Us](#) | 
 [Contact Us](#) | 
 [Members](#) | 
 [Help](#) | 
 [Site Map](#) | 
 [News](#)

Professional Weather Solutions: 
 [Aviation](#) | 
 [Energy](#) | 
 [Media](#)

Intellicast.com: The Authority in Expert Weather  
 Your use of this site constitutes your acceptance of the [Terms of Use](#) and [Privacy Policy](#)  
 2012 WSI Corporation - v4.5.001:ICAST-WEB4