

INCIDENT ACTION PLAN

Be brief and concise with your entries

Location Bayou Corne Sink Hole	Control Level Company Supervisory	Operational Period From 10/8/12 To 10/9/12
---	--	--

1.0 SITUATION Disease, community, environment PROMPTS: Weather, disease trends, Resources, Hazards & safety REFERENCE: Maps, weather reports, Sitreps, appreciation, warnings, alerts	CURRENT Sunny PREDICT Sunny
2.0 OBJECTIVES (or MISSION) PROMPTS: Time & space REFERENCE: Appreciation – control options, courses open to disease	CURRENT Objective 1 - Gas Monitoring: 6 Gas Monitors have been set up in the field and are obtaining data on a continuous basis. (See Attached Map for Locations) The monitors are running on batteries which must be changed out every morning. Three monitors are located in the swamp and are required to be reached via airboats launched from TBC facilities. The continuous monitoring data is collected at an office trailer located at Texas Brine Grand Bayou Facility. Monitoring the information on a 24 hours basis. Monitoring is being recorded for LEL, VOC, H2S and O2. Objective 2 - Elevation survey taking place once a week. Objective 3- Sink hole observation. See attached Map. Remediation plan continues with removal of vegetation also we will be using two drum skimmers and a vacuum truck. See Attached Plan. ALTERNATE
3.0 EXECUTION add safety information as appropriate	
GENERAL OUTLINE PROMPTS: Strategies & tactics (current/proposed/alternate) REFERENCE: Appreciation, Control Options	Safety Information: See Attached Safe Work Rules Reference IAP dated 8/9/12 Additional to our Safe Work Rules for this project we are adding the awareness of insects, reptiles and animals. Inspect location for flammability Daily Safety Meetings

	PPE Required on site: Respirator w/ VOC Cartridge, Gloves for sampling, eye protection, life preservers, hearing protection.
GROUPINGS	NA
TASKS Including PR & Media	Same as above
COORDINATING INSTRUCTIONS PROMPTS: Timings, routes, assembly areas, staging areas	Texas Brine Grand Bayou Facility will be used as staging area.
4.0 ADMINISTRATION (Logistics support)	
PROMPTS: Unit names, locations, contact names, phone no's, timings, duties/tasks, routes, suppliers, quantities, status (required, organised, stand by, enroute)	
SUPPLY WHO, WHAT, WHERE, WHEN of resources not readily available	NA
GROUND SUPPORT Transport of personnel, traffic mgt, refuelling, mechanical repair/maintenance	NA
COMMUNICATIONS Installation, maintenance, technical advice	Cell Phone & Landline Communications: Kenneth Blanchard – Area Manager – 985- () kblanchard@texasbrine.com Scott Borne – Facility Manager – 985- () sborne@texasbrine.com Joel Miller, PE – Consultant – 337- () (337-) joel.miller@cox-internet.com Bruce Martin – Operations/PR – 713- () (281-) bmartin@texasbrine.com Mark Cartwright – Technical/Engineering – 713- () (281-) mcartwright@unitedbrine.com Scott Whitelaw – Environmental/Safety – 713- () (713-) swhitelaw@tum.com

STAGING AREA/ FCP Setting up, communications, staffing	Texas Brine Grand Bayou Facility 1301 Hwy 70 South, Belle Rose, La 70341
5.0 ADMINISTRATION (Logistics services)	
PROMPTS: Unit names, locations, contact names, phone no's, timings, duties/tasks, routes, suppliers, quantities, status (required, organised, stand by, enroute)	
FACILITIES Security, waste, cleaning	NA
CATERING	NA
OH&S/MEDICAL Medical plan, first aid plan	Call 911
FINANCE	NA
TRAVEL	NA
INDUCTION/ TRAINING	NA
ACCOMMODATION	NA
6.0 CONTROL, COORDINATION & COMMUNICATION	
CONTROL & COORDINATION STRUCTURE REFERENCE Structural Chart	Plant Management Supervision / Contractor Work
COORDINATION & LIAISON Local knowledge, police, agency	NA

reps, emergency mgt reps	
COMMUNICATIONS PROMPTS Communications structure, operational comms plan, information mgt	Plant Management – Contractor Communication via Cell Phone

EXTRAS	
Attachments PROMPTS: maps, weather, organisational charts, resources, comms diagram	Site Map Current Weather Safe Work Rules
Plan developers PROMPTS PO, Logs Mgr, Controller	NA
Approval Controller, Ops Director	TBC Company Rep: FOSC: SOSC: POSC:

MILLER ENGINEERS & ASSOCIATES, INC.
CONSULTING ENGINEERS & LAND SURVEYORS
FRANKLIN, LA.

OXY #5 MONUMENT

1" = 400'

NOTE:

PROPERTY & LEASE LINES ARE APPROXIMATE ONLY.
THIS SKETCH DOES NOT REPRESENT A PROPERTY
BOUNDARY SURVEY.

OXY #4 MONUMENT

APPROX. EDGE
OF SLURRY PIT
8/4/12

T.B.M. 6

TB
WATER SAMPLES

WELL 21

TANK "W"

TANK "E"

T.B.M. 1

WATER WELL 1

T.B.M. 3A

T.B.M. 3C

WATER WELL 5

WATER WELL 2

T.B.M. 2

WELL 3

T.B.M. 3

WELL 4

T.B.M. 5

T.B.M. 3B

TBC LEASE LINE

WELL 9

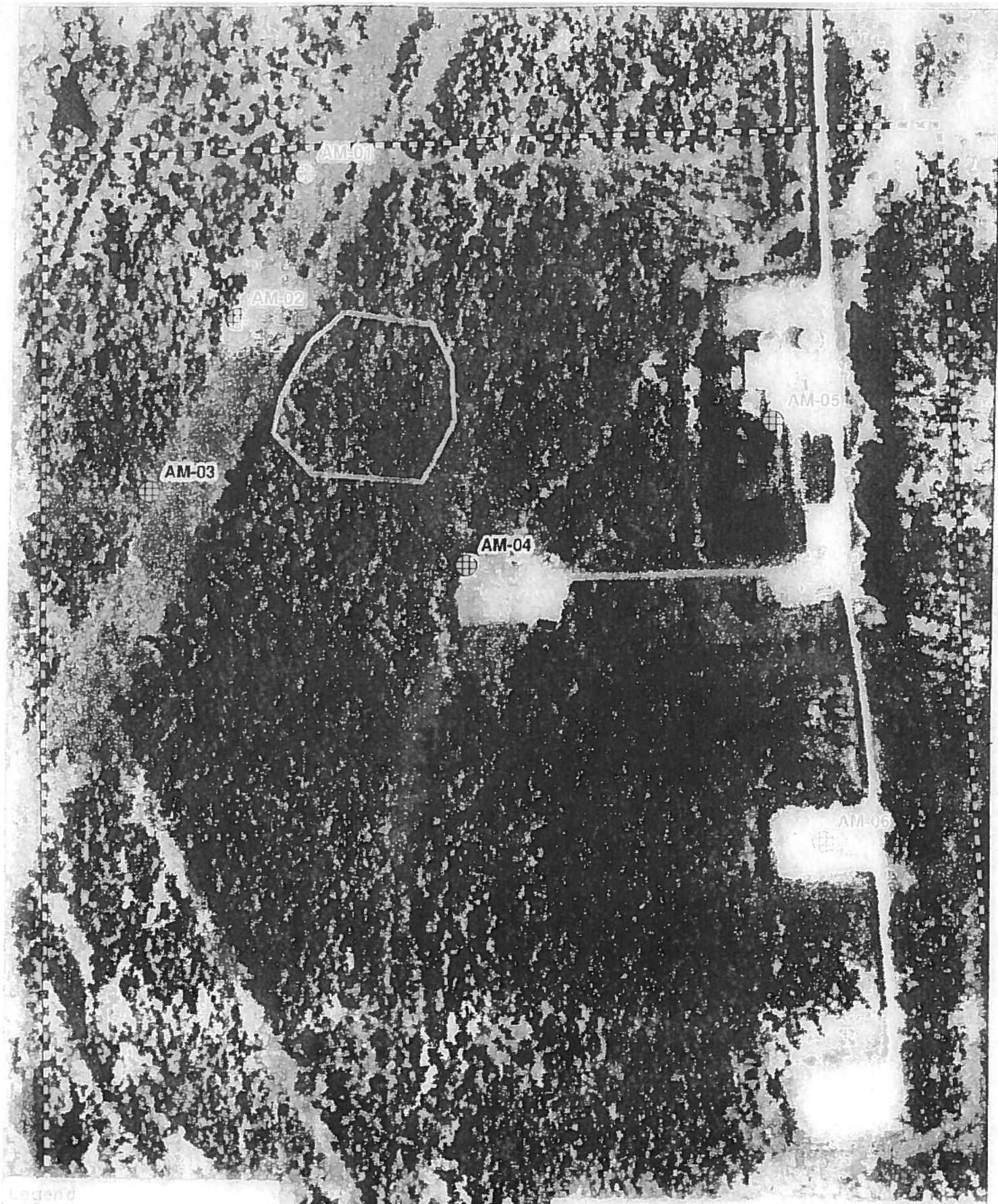
GPS BASE

WELL 40

REFERENCE PT

OXY GPS #4

T.B.M. 4



Legend

28 1981
1981-1984
1985-1989
1990-1994
1995-1999
2000-2004
2005-2009
2010-2014
2015-2019
2020-2024
2025-2029
2030-2034
2035-2039
2040-2044
2045-2049
2050-2054
2055-2059
2060-2064
2065-2069
2070-2074
2075-2079
2080-2084
2085-2089
2090-2094
2095-2099
2100-2104
2105-2109
2110-2114
2115-2119
2120-2124
2125-2129
2130-2134
2135-2139
2140-2144
2145-2149
2150-2154
2155-2159
2160-2164
2165-2169
2170-2174
2175-2179
2180-2184
2185-2189
2190-2194
2195-2199
2200-2204
2205-2209
2210-2214
2215-2219
2220-2224
2225-2229
2230-2234
2235-2239
2240-2244
2245-2249
2250-2254
2255-2259
2260-2264
2265-2269
2270-2274
2275-2279
2280-2284
2285-2289
2290-2294
2295-2299
2300-2304
2305-2309
2310-2314
2315-2319
2320-2324
2325-2329
2330-2334
2335-2339
2340-2344
2345-2349
2350-2354
2355-2359
2360-2364
2365-2369
2370-2374
2375-2379
2380-2384
2385-2389
2390-2394
2395-2399
2400-2404
2405-2409
2410-2414
2415-2419
2420-2424
2425-2429
2430-2434
2435-2439
2440-2444
2445-2449
2450-2454
2455-2459
2460-2464
2465-2469
2470-2474
2475-2479
2480-2484
2485-2489
2490-2494
2495-2499
2500-2504
2505-2509
2510-2514
2515-2519
2520-2524
2525-2529
2530-2534
2535-2539
2540-2544
2545-2549
2550-2554
2555-2559
2560-2564
2565-2569
2570-2574
2575-2579
2580-2584
2585-2589
2590-2594
2595-2599
2600-2604
2605-2609
2610-2614
2615-2619
2620-2624
2625-2629
2630-2634
2635-2639
2640-2644
2645-2649
2650-2654
2655-2659
2660-2664
2665-2669
2670-2674
2675-2679
2680-2684
2685-2689
2690-2694
2695-2699
2700-2704
2705-2709
2710-2714
2715-2719
2720-2724
2725-2729
2730-2734
2735-2739
2740-2744
2745-2749
2750-2754
2755-2759
2760-2764
2765-2769
2770-2774
2775-2779
2780-2784
2785-2789
2790-2794
2795-2799
2800-2804
2805-2809
2810-2814
2815-2819
2820-2824
2825-2829
2830-2834
2835-2839
2840-2844
2845-2849
2850-2854
2855-2859
2860-2864
2865-2869
2870-2874
2875-2879
2880-2884
2885-2889
2890-2894
2895-2899
2900-2904
2905-2909
2910-2914
2915-2919
2920-2924
2925-2929
2930-2934
2935-2939
2940-2944
2945-2949
2950-2954
2955-2959
2960-2964
2965-2969
2970-2974
2975-2979
2980-2984
2985-2989
2990-2994
2995-2999
3000-3004
3005-3009
3010-3014
3015-3019
3020-3024
3025-3029
3030-3034
3035-3039
3040-3044
3045-3049
3050-3054
3055-3059
3060-3064
3065-3069
3070-3074
3075-3079
3080-3084
3085-3089
3090-3094
3095-3099
3100-3104
3105-3109
3110-3114
3115-3119
3120-3124
3125-3129
3130-3134
3135-3139
3140-3144
3145-3149
3150-3154
3155-3159
3160-3164
3165-3169
3170-3174
3175-3179
3180-3184
3185-3189
3190-3194
3195-3199
3200-3204
3205-3209
3210-3214
3215-3219
3220-3224
3225-3229
3230-3234
3235-3239
3240-3244
3245-3249
3250-3254
3255-3259
3260-3264
3265-3269
3270-3274
3275-3279
3280-3284
3285-3289
3290-3294
3295-3299
3300-3304
3305-3309
3310-3314
3315-3319
3320-3324
3325-3329
3330-3334
3335-3339
3340-3344
3345-3349
3350-3354
3355-3359
3360-3364
3365-3369
3370-3374
3375-3379
3380-3384
3385-3389
3390-3394
3395-3399
3400-3404
3405-3409
3410-3414
3415-3419
3420-3424
3425-3429
3430-3434
3435-3439
3440-3444
3445-3449
3450-3454
3455-3459
3460-3464
3465-3469
3470-3474
3475-3479
3480-3484
3485-3489
3490-3494
3495-3499
3500-3504
3505-3509
3510-3514
3515-3519
3520-3524
3525-3529
3530-3534
3535-3539
3540-3544
3545-3549
3550-3554
3555-3559
3560-3564
3565-3569
3570-3574
3575-3579
3580-3584
3585-3589
3590-3594
3595-3599
3600-3604
3605-3609
3610-3614
3615-3619
3620-3624
3625-3629
3630-3634
3635-3639
3640-3644
3645-3649
3650-3654
3655-3659
3660-3664
3665-3669
3670-3674
3675-3679
3680-3684
3685-3689
3690-3694
3695-3699
3700-3704
3705-3709
3710-3714
3715-3719
3720-3724
3725-3729
3730-3734
3735-3739
3740-3744
3745-3749
3750-3754
3755-3759
3760-3764
3765-3769
3770-3774
3775-3779
3780-3784
3785-3789
3790-3794
3795-3799
3800-3804
3805-3809
3810-3814
3815-3819
3820-3824
3825-3829
3830-3834
3835-3839
3840-3844
3845-3849
3850-3854
3855-3859
3860-3864
3865-3869
3870-3874
3875-3879
3880-3884
3885-3889
3890-3894
3895-3899
3900-3904
3905-3909
3910-3914
3915-3919
3920-3924
3925-3929
3930-3934
3935-3939
3940-3944
3945-3949
3950-3954
3955-3959
3960-3964
3965-3969
3970-3974
3975-3979
3980-3984
3985-3989
3990-3994
3995-3999
4000-4004
4005-4009
4010-4014
4015-4019
4020-4024
4025-4029
4030-4034
4035-4039
4040-4044
4045-4049
4050-4054
4055-4059
4060-4064
4065-4069
4070-4074
4075-4079
4080-4084
4085-4089
4090-4094
4095-4099
4100-4104
4105-4109
4110-4114
4115-4119
4120-4124
4125-4129
4130-4134
4135-4139
4140-4144
4145-4149
4150-4154
4155-4159
4160-4164
4165-4169
4170-4174
4175-4179
4180-4184
4185-4189
4190-4194
4195-4199
4200-4204
4205-4209
4210-4214
4215-4219
4220-4224
4225-4229
4230-4234
4235-4239
4240-4244
4245-4249
4250-4254
4255-4259
4260-4264
4265-4269
4270-4274
4275-4279
4280-4284
4285-4289
4290-4294
4295-4299
4300-4304
4305-4309
4310-4314
4315-4319
4320-4324
4325-4329
4330-4334
4335-4339
4340-4344
4345-4349
4350-4354
4355-4359
4360-4364
4365-4369
4370-4374
4375-4379
4380-4384
4385-4389
4390-4394
4395-4399
4400-4404
4405-4409
4410-4414
4415-4419
4420-4424
4425-4429
4430-4434
4435-4439
4440-4444
4445-4449
4450-4454
4455-4459
4460-4464
4465-4469
4470-4474
4475-4479
4480-4484
4485-4489
4490-4494
4495-4499
4500-4504
4505-4509
4510-4514
4515-4519
4520-4524
4525-4529
4530-4534
4535-4539
4540-4544
4545-4549
4550-4554
4555-4559
4560-4564
4565-4569
4570-4574
4575-4579
4580-4584
4585-4589
4590-4594
4595-4599
4600-4604
4605-4609
4610-4614
4615-4619
4620-4624
4625-4629
4630-4634
4635-4639
4640-4644
4645-4649
4650-4654
4655-4659
4660-4664
4665-4669
4670-4674
4675-4679
4680-4684
4685-4689
4690-4694
4695-4699
4700-4704
4705-4709
4710-4714
4715-4719
4720-4724
4725-4729
4730-4734
4735-4739
4740-4744
4745-4749
4750-4754
4755-4759
4760-4764
4765-4769
4770-4774
4775-4779
4780-4784
4785-4789
4790-4794
4795-4799
4800-4804
4805-4809
4810-4814
4815-4819
4820-4824
4825-4829
4830-4834
4835-4839
4840-4844
4845-4849
4850-4854
4855-4859
4860-4864
4865-4869
4870-4874
4875-4879
4880-4884
4885-4889
4890-4894
4895-4899
4900-4904
4905-4909
4910-4914
4915-4919
4920-4924
4925-4929
4930-4934
4935-4939
4940-4944
4945-4949
4950-4954
4955-4959
4960-4964
4965-4969
4970-4974
4975-4979
4980-4984
4985-4989
4990-4994
4995-4999
5000-5004
5005-5009
5010-5014
5015-5019
5020-5024
5025-5029
5030-5034
5035-5039
5040-5044
5045-5049
5050-5054
5055-5059
5060-5064
5065-5069
5070-5074
5075-5079
5080-5084
5085-5089
5090-5094
5095-5099
5100-5104
5105-5109
5110-5114
5115-5119
5120-5124
5125-5129
5130-5134
5135-5139
5140-5144
5145-5149
5150-5154
5155-5159
5160-5164
5165-5169
5170-5174
5175-5179
5180-5184
5185-5189
5190-5194
5195-5199
5200-5204
5205-5209
5210-5214
5215-5219
5220-5224
5225-5229
5230-5234
5235-5239
5240-5244
5245-5249
5250-5254
5255-5259
5260-5264
5265-5269
5270-5274
5275-5279
5280-5284
5285-5289
5290-5294
5295-5299
5300-5304
5305-5309
5310-5314
5315-5319
5320-5324
5325-5329
5330-5334
5335-5339
5340-5344
5345-5349
5350-5354
5355-5359
5360-5364
5365-5369
5370-5374
5375-5379
5380-5384
5385-5389
5390-5394
5395-5399
5400-5404
5405-5409
5410-5414
5415-5419
5420-5424
5425-5429
5430-5434
5435-5439
5440-5444
5445-5449
5450-5454
5455-5459
5460-5464
5465-5469
5470-5474
5475-5479
5480-5484
5485-5489
5490-5494
5495-5499
5500-5504
5505-5509
5510-5514
5515-5519
5520-5524
5525-5529
5530-5534
5535-5539
5540-5544
5545-5549
5550-5554
5555-5559
5560-5564
5565-5569
5570-5574
5575-5579
5580-5584
5585-5589
5590-5594
5595-5599
5600-5604
5605-5609
5610-5614
5615-5619
5620-5624
5625-5629
5630-5634
5635-5639
5640-5644
5645-5649
5650-5654
5655-5659
5660-5664
5665-5669
5670-5674
5675-5679
5680-5684
5685-5689
5690-5694
5695-5699
5700-5704
5705-5709
5710-5714
5715-5719
5720-5724
5725-5729
5730-5734
5735-5739
5740-5744
5745-5749
5750-5754
5755-5759
5760-5764
5765-5769
5770-5774
5775-5779
5780-5784
5785-5789
5790-5794
5795-5799
5800-5804
5805-5809
5810-5814
5815-5819
5820-5824
5825-5829
5830-5834
5835-5839
5840-5844
5845-5849
5850-5854
5855-5859
5860-5864
5865-5869
5870-5874
5875-5879
5880-5884
5885-5889
5890-5894
5895-5899
5900-5904
5905-5909
5910-5914
5915-5919
5920-5924
5925-5929
5930-5934
5935-5939
5940-5944
5945-5949
5950-5954
5955-5959
5960-5964
5965-5969
5970-5974
5975-5979
5980-5984
5985-5989
5990-5994
5995-5999
6000-6004
6005-6009
6010-6014
6015-6019
6020-6024
6025-6029
6030-6034
6035-6039
6040-6044
6045-6049
6050-6054
6055-6059
6060-6064
6065-6069
6070-6074
6075-6079
6080-6084
6085-6089
6090-6094
6095-6099
6100-6104
6105-6109
6110-6114
6115-6119
6120-6124
6125-6129
6130-6134
6135-6139
6140-6144
6145-6149
6150-6154
6155-6159
6160-6164
6165-6169
6170-6174
6175-6179
6180-6184
6185-6189
6190-6194
6195-6199
6200-6204
6205-6209
6210-6214
6215-6219
6220-6224
6225-6229
6230-6234
6235-6239
6240-6244
6245-6249
6250-6254
6255-6259
6260-6264
6265-6269
6270-6274
6275-6279
6280-6284
6285-6289
6290-6294
6295-6299
6300-6304
6305-6309
6310-6314
6315-6319
6320-6324
6325-6329
6330-6334
6335-6339
6340-6344
6345-6349
6350-6354
6355-6359
6360-6364
6365-6369
6370-6374
6375-6379
6380-6384
6385-6389
6390-6394
6395-6399
6400-6404
6405-6409
6410-6414
6415-6419
6420-6424
6425-6429
6430-6434
6435-6439
6440-6444
6445-6449
6450-6454
6455-6459
6460-6464
6465-6469
6470-6474
6475-6479
6480-6484
6485-6489
6490-6494
6495-6499
6500-6504
6505-6509
6510-6514
6515-6519
6520-6524
6525-6529
6530-6534
6535-6539
6540-6544
6545-6549
6550-6554
6555-6559
6560-6564
6565-6569
6570-6574
6575-6579
6580-6584
6585-6589
6590-6594
6595-6599
6600-6604
6605-6609
6610-6614
6615-6619
6620-6624
6625-6629
6630-6634
6635-6639
6640-6644
6645-6649
6650-6654
6655-6659
6660-6664
6665-6669
6670-6674
6675-6679
6680-6684
6685-6689
6690-6694
6695-6699
6700-6704
6705-6709
6710-6714
6715-6719
6720-6724
6725-6729
6730-6734
6735-6739
6740-6744
6745-6749
6750-6754
6755-6759
6760-6764
6765-6769
6770-6774
6775-6779
6780-6784
6785-6789
6790-6794
6795-6799
6800-6804
6805-6809
6810-6814
6815-6819
6820-6824
6825-6829
6830-6834
6835-6839
6840-6844
6845-6849
6850-6854
6855-6859
6860-6864
6865-6869
6870-6874
6875-6879
6880-6884
6885-6889
6890-6894
6895-6899
6900-6904
6905-6909
6910-6914
6915-6919
6920-6924
6925-6929
6930-6934
6935-6939
6940-6944
6945-6949
6950-6954
6955-6959
6960-6964
6965-6969
6970-6974
6975-6979
6980-6984
6985-6989
6990-6994
6995-6999
7000-7004
7005-7009
7010-7014
7015-7019
7020-7024
7025-7029
7030-7034
7035-7039
7040-7044
7045-7049
7050-7054
7055-7059
7060-7064
7065-7069
7070-7074
7075-7079
7080-7084
7085-7089
7090-7094
7095-7099
7100-7104
7105-7109
7110-7114
7115-7119
7120-7124
7125-7129
7130-7134
7135-7139
7140-7144
7145-7149
7150-7154
7155-7159
7160-7164
7165-7169
7170-7174
7175-7179
7180-7184
7185-7189
7190-7194
7195-7199
7200-7204
7205-7209
7210-7214
7215-7219
7220-7224
7225-7229
7230-7234
7235-7239
7240-7244
7245-7249
7250-7254
7255-7259
7260-7264
7265-7269
7270-7274
7275-7279
7280-7284
7285-7289
7290-7294
7295-7299
7300-7304
7305-7309
7310-7314
7315-7319
7320-7324
7325-7329
7330-7334
7335-7339
7340-7344
7345-7349
7350-7354
7355-7359
7360-7364
7365-7369
7370-7374
7375-7379
7380-7384
7385-7389
7390-7394
7395-7399
7400-7404
7405-7409
7410-7414
7415-7419
7420-7424
7425-7429
7430-7434
7435-7439
7440-7444
7445-7449
7450-7454
7455-7459
7460-7464
7465-7469
7470-7474
7475-7479
7480-7484

TEXAS BRINE COMPANY, LLC AND AFFILIATED COMPANIES

Safe Work Practices

UNDERGROUND
STORAGE, LLC



UNITEDBRINE

UNITEDBRINE

TEXAS BRINE COMPANY, LLC

TEXAS BRINE COMPANY, LLC
SERVICES WARDEN, LLC



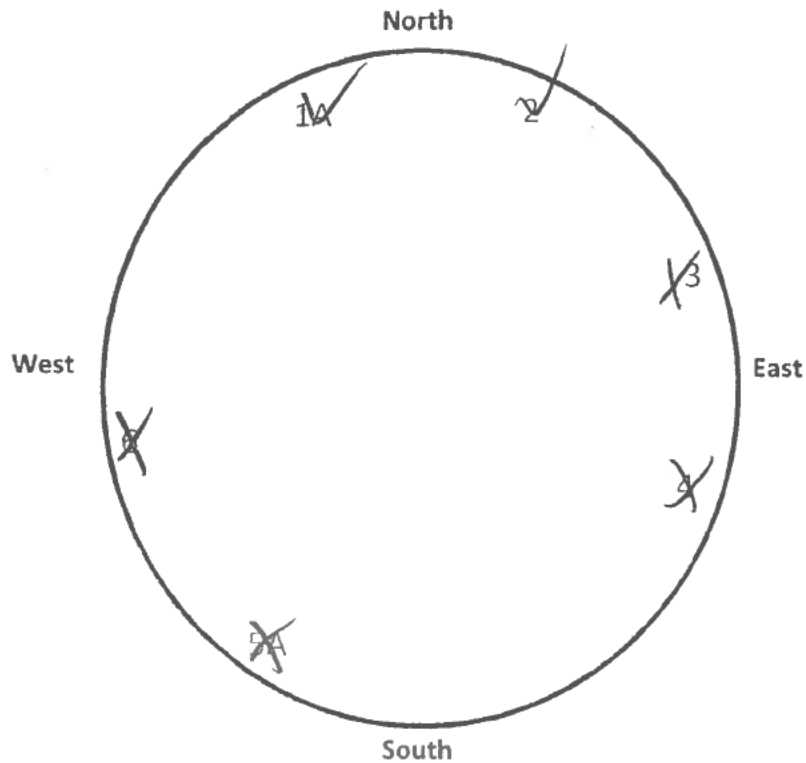
AMERICAN CHEMICAL SOCIETY

American
Chemical
Society

Bayou Corne Sinkhole

Date and Time: 10/7/12

	Time 7:00 p.m.	Time 10:00 p.m.	Time 1:00 a.m.	Time 4:00 a.m.
Tree 1		✓		
Tree 2		✓		
Tree 3		X		
Tree 4		X		
Tree 5		X		
Tree 6		X		



NOTE: Coordinates for each tree are forth coming.

By: Joshua Boudreau

Site Specific Safety Plan for Remediation of the Bayou Corne Sink Hole

The following plan is a site specific plan for the remediation of the Bayou Corne sink hole which will be achieved in two Phases. Phase one will include the construction of an access road to the sink hole which will allow the use of a long reach excavator. The excavator will be used to remove vegetation near the access road and place into roll off boxes. Phase two will consist of placing one or more airboats with attached rakes that will be used to push vegetation towards the access road where it will be removed and placed in roll off boxes. By removing the vegetation this allow us the use o skimmers and absorbent booms to aid in hydrocarbon removal.

Site Setting

The Texas Brine facility is located at 1301 Hwy 70, Belle Rose, LA 70341. The facility is located South of 70. The site is located on raised pads and roads but the property is otherwise swamp. A site map is attached. The nearest hospital Our Lady of the Lake is located in Napoleonville, LA. which is a 15 minute trip.

Site Specific Hazards

The site is located in a swamp setting and potential dangers may be present. Personnel should be aware of

Alligators

Wasps

Snakes

Spiders

Emergency Contact

911 will used in any emergency.

Cell phones on site

Site Safety

Safety Meeting

Held at the beginning of each shift.

PPE Requirements

Hard hat

Safety Glasses

Steel toe boots

Air Monitoring

A system of air monitoring devices have been placed across the property surrounding the sink hole. One air monitoring device is located next to the access road.

Airboats will have hand held monitors on there person at all times when on the sink hole

Spotters and Warnings

A person or persons armed with an air horn will be placed on site looking for safety issues such as

Leaning trees

Falling trees

Ground Movement

Driver of the truck attached to the roll off box will remain in the truck at all times and will be ready to vacate the access road on signal.

Heavy Equipment

Long reach excavator

Environmental

Vegetation will be placed in lined roll off boxes and disposed of

Airboats will remain inside the containment boom once entered

Decon of airboats will take place on location pad next to access road.

Universal Time: Monday, 08 Oct 2012, 12:42

52°F

Belle Rose, Louisiana ▾

Local Weather

Like 36k

National News

Local

National

Global

Storms

Health

Travel

Community

Forecast

Current

Radar

Satellite

wxMap

iNav

Sign-In

Help

Hurricanes

Alerts

Weather Report

Home » Local » Weather Report

Belle Rose, Louisiana

[Weather Report](#) |
 [Interactive Weather Map](#) |
 [Extended Forecast](#) |
 [Hourly Forecast](#) |
 [Past Observations](#) |
 [Historic Averages](#) |
 [Related](#) ▾

Current Conditions - °F | °C

As of 6:53 AM on Monday 08 Oct 2012 (Local Time) from KBTR Reporting Station

Overcast

52°F

Feels Like: 52°

Wind Chill: 52°

Heat Index: 52°

Dew Point: 46°

Humidity: 80%

Pressure: 30.16"

Ceiling: 3800

Visibility: 10mi

Wind: 6mph

Direction: 360° (N)

Gusts: NA

Report Text: KBTR 081153Z AUTO 3600SKT 105M OVC038 11/08 A3016 RH4K A02 SLP212 TD1110078 10117 20106 53015 TSWO

View Detailed Observations for the last 48 Hours · 14 Days

Today's Forecast

8 AM

M Sunny

56°

9 AM

M Sunny

60°

10 AM

M Sunny

64°

View Complete Hourly Forecast »

Local Information

No Weather Alerts for this location

Radar · Satellite · Surface Analysis

Tropical Storm Tracking

Tropical Storm Olivia

PACIFIC TRACK

Maps:

- Current Track
- Visible Satellite
- Infrared Satellite

Bulletins:

- Advisory

Additional Resources:

- Watches & Warnings
- Severe Outlook Today
- Severe Outlook Tomorrow
- Lightning Strikes
- Hurricane Season Summaries

New Forecast Map Updates

Plan your seasonal activities better

Click here to learn more...

10 Day Forecast - °F | °C

View the Detailed Extended Forecast »

mon	tue	wed	thu	fri	sat	sun	mon	tue	wed
oct 08	oct 09	oct 10	oct 11	oct 12	oct 13	oct 14	oct 15	oct 16	oct 17
M Sunny	Sunny	M Sunny	Sunny	Sunny	Sunny	P Cloudy	P Cloudy	P Cloudy	Sunny
75° 54°	81° 61°	85° 65°	86° 65°	86° 66°	87° 69°	87° 66°	84° 64°	83° 61°	82° 63°

Details for Monday, October 08

Sunny to partly cloudy. High near 75F. Winds N at 10 to 20 mph.

Evening: Generally clear. Low 54F. Winds light and variable.

UV Index: 8 (Very High)

Relative Humidity: 60%

Precipitation: 10%

Snow: 0%

Cloud Coverage: 36%

Sunrise: 7:02 AM

Sunset: 6:41 PM

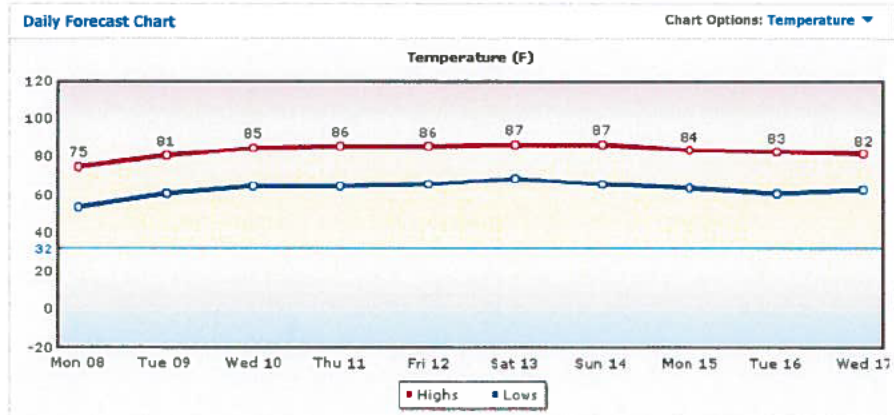
Moonrise: 12:10 AM

Moonset: 2:04 PM

Moonphase: Last Quarter

Direction: N (11°)

Speed: 13Mph(20Km, 11Kts)



[Temperature](#)
[UV Index](#)
[Relative Humidity](#)
[Precipitation](#)
[Snow](#)
[Clouds](#)
[Wind](#)

[Daily Forecast](#)
[Hourly Forecast](#)
[Past Observations](#)
[Historic Averages](#)

More from Intellicast



[Check Out Our Interactive Weather Map](#)

Articles

- Local Weather Maps
- US Weather Maps
- US Current Weather
- Global Weather Maps
- Weather Analysis Charts
- Active Storm Track
- Weather Tools

Weather Center



Weather Alerts
Current National Weather Service Watches and Warnings by type and state throughout the United States.



Ski & Snow
The Ski & Snow Section is where you can get the latest ski resort conditions and snow forecasts.



Texas: Frenzy Over New Diet Pill

Houston: Celebrity Doctor Exposes New 'Miracle' Diet Aid



"Shocking Muscle Growth"

Rare Plant Increases Muscle Growth 700% - But Should It Be Banned?



Houston Arrest Records

Who do you know in Houston that's been arrested? You? Your...

Search the Web: Powered by [Google](#)

[Local](#) | [National](#) | [Global](#) | [Storms](#) | [Health](#) | [Travel](#) | [Community](#)

[About Us](#) | [Weather on your Site](#) | [Advertise with Us](#) | [Contact Us](#) | [Members](#) | [Help](#) | [Site Map](#) | [News](#)

Professional Weather Solutions: [Aviation](#) | [Energy](#) | [Media](#)

Intellicast.com: The Authority in Expert Weather
Your use of this site constitutes your acceptance of the [Terms of Use](#) and [Privacy Policy](#)
2012 WSI Corporation - v4.5.001: ICAST-WEB2