

INCIDENT ACTION PLAN

Be brief and concise with your entries

Location Bayou Corne Sink Hole	Control Level Company Supervisory	Operational Period From 10/9/12 To 10/10/12
---	--	---

1.0 SITUATION Disease, community, environment PROMPTS: Weather, disease trends, Resources, Hazards & safety REFERENCE: Maps, weather reports, Sitreps, appreciation, warnings, alerts	CURRENT Sunny PREDICT Sunny
2.0 OBJECTIVES (or MISSION) PROMPTS: Time & space REFERENCE: Appreciation – control options, courses open to disease	CURRENT Objective 1 - Gas Monitoring: 6 Gas Monitors have been set up in the field and are obtaining data on a continuous basis. (See Attached Map for Locations) The monitors are running on batteries which must be changed out every morning. Three monitors are located in the swamp and are required to be reached via airboats launched from TBC facilities. The continuous monitoring data is collected at an office trailer located at Texas Brine Grand Bayou Facility. Monitoring the information on a 24 hours basis. Monitoring is being recorded for LEL, VOC, H2S and O2. Objective 2 - Elevation survey taking place once a week. Objective 3- Sink hole observation. See attached Map. Remediation plan continues with removal of vegetation also we will be using four drum skimmers and two vacuum trucks. See Attached Plan. Objective 4- Inclinometer Monitoring; See attached ALTERNATE
3.0 EXECUTION add safety information as appropriate	
GENERAL OUTLINE PROMPTS: Strategies & tactics (current/proposed/alternate) REFERENCE: Appreciation, Control Options	Safety Information: See Attached Safe Work Rules Reference IAP dated 8/9/12 Additional to our Safe Work Rules for this project we are adding the awareness of insects, reptiles and animals. Inspect location for flammability

	Daily Safety Meetings PPE Required on site: Respirator w/ VOC Cartridge, Gloves for sampling, eye protection, life preservers, hearing protection.
GROUPINGS	NA
TASKS Including PR & Media	Same as above
COORDINATING INSTRUCTIONS PROMPTS: Timings, routes, assembly areas, staging areas	Texas Brine Grand Bayou Facility will be used as staging area.
4.0 ADMINISTRATION (Logistics support) PROMPTS: Unit names, locations, contact names, phone no's, timings, duties/tasks, routes, suppliers, quantities, status (required, organised, stand by, enroute)	
SUPPLY WHO, WHAT, WHERE, WHEN of resources not readily available	NA
GROUND SUPPORT Transport of personnel, traffic mgt, refuelling, mechanical repair/maintenance	NA
COMMUNICATIONS Installation, maintenance, technical advice	Cell Phone & Landline Communications: Kenneth Blanchard – Area Manager – 985- (985-) kblanchard@texasbrine.com Scott Borne – Facility Manager – 985- (985-) sborne@texasbrine.com Joel Miller, PE – Consultant – 337- (337-) joel.miller@cox-internet.com Bruce Martin – Operations/PR – 713- (281-) bmartin@texasbrine.com Mark Cartwright – Technical/Engineering – 713- (281-) mcartwright@unitedbrine.com Scott Whitelaw – Environmental/Safety – 713- (713-)

	swhitelaw@tum.com
STAGING AREA/ FCP Setting up, communications, staffing	Texas Brine Grand Bayou Facility 1301 Hwy 70 South, Belle Rose, La 70341
5.0 ADMINISTRATION (Logistics services)	
PROMPTS: Unit names, locations, contact names, phone no's, timings, duties/tasks, routes, suppliers, quantities, status (required, organised, stand by, enroute)	
FACILITIES Security, waste, cleaning	NA
CATERING	NA
OH&S/MEDICAL Medical plan, first aid plan	Call 911
FINANCE	NA
TRAVEL	NA
INDUCTION/ TRAINING	NA
ACCOMMODATION	NA
6.0 CONTROL, COORDINATION & COMMUNICATION	
CONTROL & COORDINATION STRUCTURE REFERENCE Structural Chart	Plant Management Supervision / Contractor Work
COORDINATION & LIAISON	NA

Local knowledge, police, agency reps, emergency mgt reps	
COMMUNICATIONS PROMPTS Communications structure, operational comms plan, information mgt	Plant Management – Contractor Communication via Cell Phone

EXTRAS	
Attachments PROMPTS:: maps, weather, organisational charts, resources, comms diagram	Site Map Current Weather Safe Work Rules
Plan developers PROMPTS PO, Logs Mgr, Controller	NA
Approval Controller, Ops Director	TBC Company Rep: FOSC: SOSC: POSC:

MILLER ENGINEERS & ASSOCIATES, INC.
CONSULTING ENGINEERS & LAND SURVEYORS
FRANKLIN, LA.

OXY #5 MONUMENT

1" = 400'

NOTE:

PROPERTY & LEASE LINES ARE APPROXIMATE ONLY.
THIS SKETCH DOES NOT REPRESENT A PROPERTY
BOUNDARY SURVEY.

OXY #4 MONUMENT

APPROX. EDGE
OF SLURRY PIT
8/4/12

T.B.M. 6

TB
WATER SAMPLES

WELL 1

TANK "W"

TANK "E"

T.B.M. 1

WATER WELL

T.B.M. 3A

T.B.M. 3C

WATER WELL 5

WATER WELL 2

WELL 3

T.B.M. 3

WELL 2

T.B.M. 5

T.B.M. 3B

TBC LEASE LINE

WELL 9

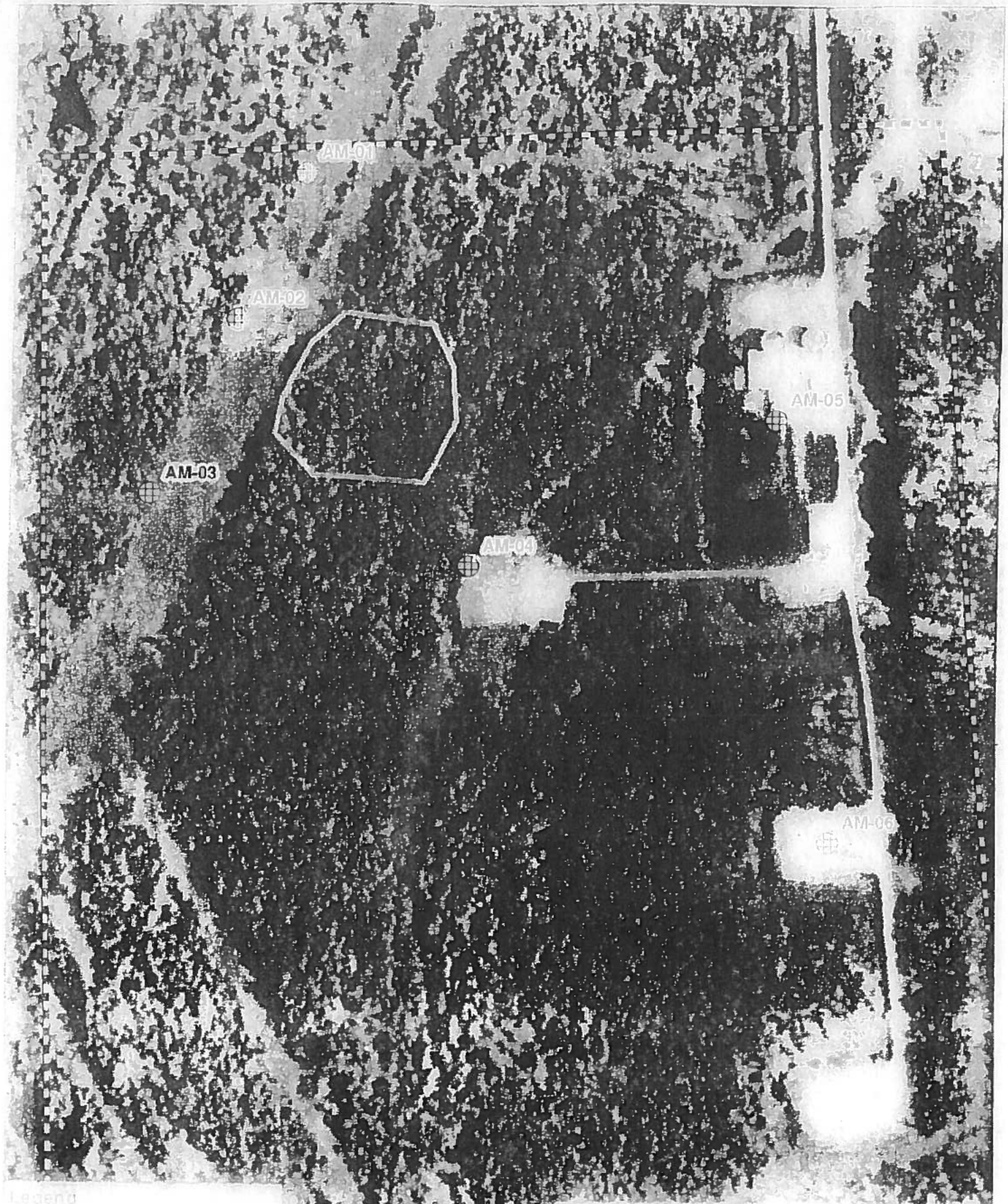
GPS BASE

WELL 10

REFERENCE PT

OXY GPS #4

T.B.M. 4



Legend

AM-01

AM-02

AM-03

AM-04

AM-05

AM-06

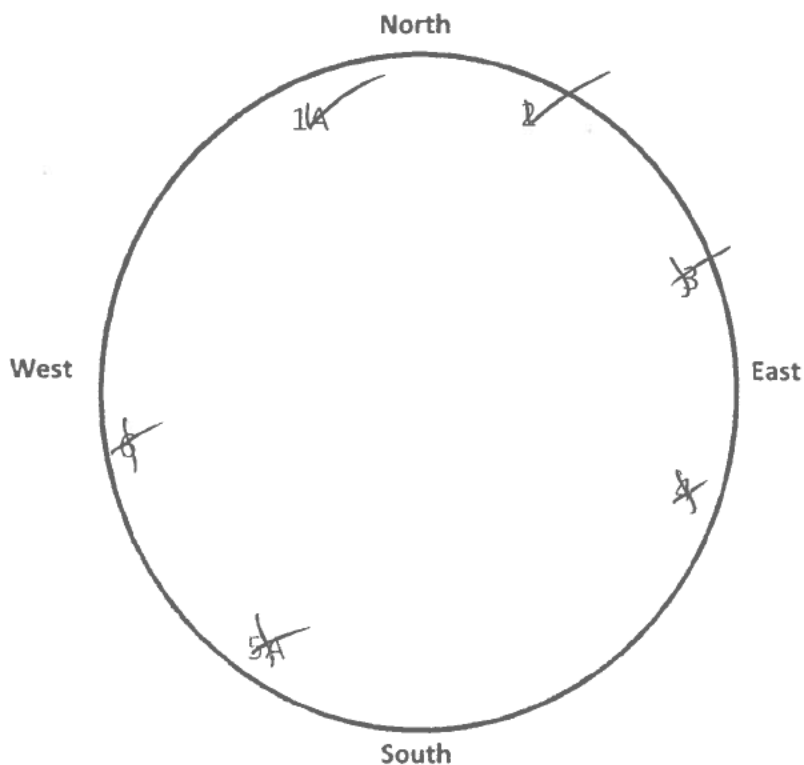


Tex 13 Bridge Air Monitoring Locations
4/7/2012 - current

Bayou Corne Sinkhole

Date and Time: 10/8/12

	Time 7:00 p.m.	Time 10:00 p.m.	Time 1:00 a.m.	Time 4:00 a.m.
Tree 1		✓		
Tree 2		✓		
Tree 3		X		
Tree 4		X		
Tree 5		X		
Tree 6		X		



NOTE: Coordinates for each tree are forth coming.

By: Joshua Boudreau

TEXAS BRINE COMPANY, LLC AND AFFILIATED COMPANIES

Safe Work Practices

UNDERGROUND
STORAGE, LLC



UNITEDBRINE

UNITEDBRINE

TEXAS BRINE COMPANY, LLC

UNITED BRINE COMPANY, LLC
SERVICES MANAGEMENT, LLC



AMERICAN BRINE ASSOCIATION

American
Brine
Association

Site Specific Safety Plan for Remediation of the Bayou Corne Sink Hole

The following plan is a site specific plan for the remediation of the Bayou Corne sink hole which will be achieved in two Phases. Phase one will include the construction of an access road to the sink hole which will allow the use of a long reach excavator. The excavator will be used to remove vegetation near the access road and place into roll off boxes. Phase two will consist of placing one or more airboats with attached rakes that will be used to push vegetation towards the access road where it will be removed and placed in roll off boxes. By removing the vegetation this allow us the use o skimmers and absorbent booms to aid in hydrocarbon removal.

Site Setting

The Texas Brine facility is located at 1301 Hwy 70, Belle Rose, LA 70341. The facility is located South of 70. The site is located on raised pads and roads but the property is otherwise swamp. A site map is attached. The nearest hospital Our Lady of the Lake is located in Napoleonville, LA. which is a 15 minute trip.

Site Specific Hazards

The site is located in a swamp setting and potential dangers may be present. Personnel should be aware of

Alligators

Wasps

Snakes

Spiders

Emergency Contact

911 will used in any emergency.

Cell phones on site

Site Safety

Safety Meeting

Held at the beginning of each shift.

PPE Requirements

Hard hat

Safety Glasses

Steel toe boots

Air Monitoring

A system of air monitoring devices have been placed across the property surrounding the sink hole. One air monitoring device is located next to the access road.

Airboats will have hand held monitors on there person at all times when on the sink hole

Spotters and Warnings

A person or persons armed with an air horn will be placed on site looking for safety issues such as

Leaning trees

Falling trees

Ground Movement

Driver of the truck attached to the roll off box will remain in the truck at all times and will be ready to vacate the access road on signal.

Heavy Equipment

Long reach excavator

Environmental

Vegetation will be placed in lined roll off boxes and disposed of

Airboats will remain inside the containment boom once entered

Decon of airboats will take place on location pad next to access road.

Universal Time: Tuesday, 09 Oct 2012, 12:08

48°F Belle Rose, Louisiana

Enter City, State, Country or U.S. Zip code or Airport Id

Local Weather

Like 36k

National News

Local National Global Storms Health Travel Community Forecast Current Radar Satellite wxMap iNav

Sign-In

Help

Hurricanes

Alerts

Weather Report

Home » Local » Weather Report

Belle Rose, Louisiana

Weather Report | Interactive Weather Map | Extended Forecast | Hourly Forecast | Past Observations | Historic Averages | Related

Current Conditions - °F | °C

As of 6:53 AM on Tuesday 09 Oct 2012 (Local Time) from KBTR Reporting Station



Clear

48°F

Feels Like: 48°

Wind Chill: 48°
Heat Index: 48°
Dew Point: 47°
Humidity: 96%
Pressure: 30.13"

Ceiling: Unl
Visibility: 10mi
Wind: 3mph
Direction: 50° (NE)
Gusts: NA

Report Text: KBTR 091153Z ALTO 05003KT 10SM CLR 09/08 A3013 RMK AO2 SLP203 T00890083 10111 20089 51010 TSNQ

View Detailed Observations for the last
48 Hours 14 Days

Today's Forecast

8 AM Sunny 58°
9 AM Sunny 62°
10 AM Sunny 66°

Local Information



No Weather Alerts for this location

View Complete Hourly Forecast

Radar Satellite Surface Analysis

Tropical Storm Tracking

Tropical Depression Olivia PACIFIC TRACK



Maps:

- Current Track
- Visible Satellite
- Infrared Satellite

Bulletins:

- Advisory

Additional Resources:

- Watches & Warnings
- Severe Outlook Today
- Severe Outlook Tomorrow
- Lightning Strikes
- Hurricane Season Summaries

New Forecast Map Updates Plan your seasonal activities better

Click here to learn more...



10 Day Forecast - °F | °C

View the Detailed Extended Forecast

tue	wed	thu	fri	sat	sun	mon	tue	wed	thu
oct 09	oct 10	oct 11	oct 12	oct 13	oct 14	oct 15	oct 16	oct 17	oct 18
Sunny	M Sunny	M Sunny	Sunny	Sunny	P Cloudy	M Cloudy	Sct Showers	Sct T-Storms	Sunny
79° 60°	85° 64°	85° 64°	86° 65°	86° 69°	87° 69°	85° 67°	84° 67°	83° 63°	83° 64°

Details for Tuesday, October 09

Sunny. High 79F. Winds light and variable.

Evening: Mainly clear. Low around 60F. Winds light and variable.

UV Index: 8 (Very High) Relative Humidity: 62% Precipitation: 0% Snow: 0% Cloud Coverage: 0%

Sunrise: 7:03 AM
Sunset: 6:39 PM

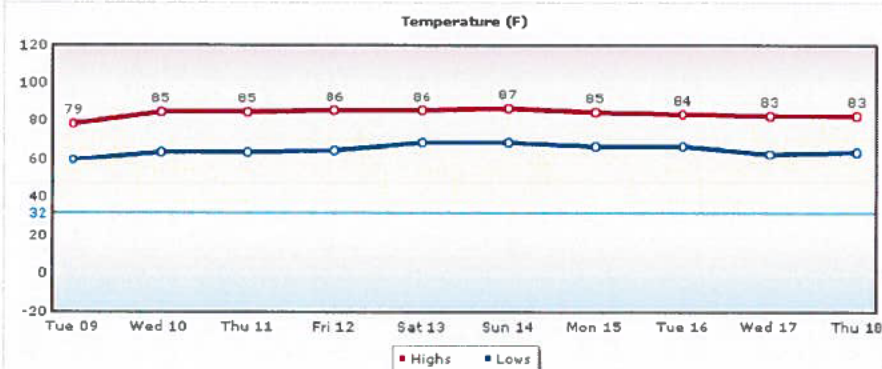
Moonrise: 1:05 AM
Moonset: 2:44 PM

Moonphase: Waning Crescent

Direction: NNE (31°)
Speed: 4Mph(6km, 3kts)

Daily Forecast Chart

Chart Options: Temperature



[Temperature](#)
[UV Index](#)
[Relative Humidity](#)
[Precipitation](#)
[Snow](#)
[Clouds](#)
[Wind](#)

[Daily Forecast](#)
[Hourly Forecast](#)
[Past Observations](#)
[Historic Averages](#)

More from Intellicast



Check Out Our Interactive Weather Map

Articles

- Local Weather Maps
- US Weather Maps
- US Current Weather
- Global Weather Maps
- Weather Analysis Charts
- Active Storm Track
- Weather Tools

Weather Center



Weather Alerts
Current National Weather Service Watches and Warnings by type and state throughout the United States.



Ski & Snow
The Ski & Snow Section is where you can get the latest ski resort conditions and snow forecasts.



Houston - New rule allows many Texas residents to get car insurance at half-price.



(Texas): This 1 weird "loophole" has become the car insurance companies worst nightmare!



If you are a smoker and live in [Texas] you need to read this...

Search the Web:

Powered by

[Local](#) |
 [National](#) |
 [Global](#) |
 [Storms](#) |
 [Health](#) |
 [Travel](#) |
 [Community](#)

[About Us](#) |
 [Weather on your Site](#) |
 [Advertise with Us](#) |
 [Contact Us](#) |
 [Members](#) |
 [Help](#) |
 [Site Map](#) |
 [News](#)

Professional Weather Solutions: [Aviation](#) | [Energy](#) | [Media](#)

Intellicast.com: The Authority in Expert Weather
 Your use of this site constitutes your acceptance of the [Terms of Use](#) and [Privacy Policy](#)
 2012 WSI Corporation - v4.5.001:ICAST-WEB2

October 8, 2012

Mr. Bruce Martin
Vice President of Operations
Texas Brine Company, LLC
4800 San Felipe
Houston, TX 77056

Dear Mr. Martin:

**RE: In-Place Inclinometer and Tiltmeter Monitoring System, Napoleonville Dome
Weekly Report: September 29 Through October 5, 2012**

RESPEC is pleased to submit this weekly report on the in-place inclinometer (IPI) and tiltmeter monitoring system installed around the sinkhole located near the western flank of the Napoleonville Dome, Assumption Parish, Louisiana. The locations of the IPIs and tiltmeters are shown in Figure 1. Graphs illustrating the data, as recorded by each IPI and tiltmeter, are provided in Figures 2–4. The IPI data for the *X*-directions and *Y*-directions are plotted separately in Figures 2 and 3, respectively. The tiltmeter data for both the *X*- and *Y*-directions are plotted in Figure 4. A normal condition that reflects no change in ground movement, plots as a horizontal line on these graphs. Note that the instruments installed are very sensitive; they can measure ground tilt to less than 1/100 of a degree. Alarm levels are set at ± 1.0 degree for all inclinometers and ± 0.5 degree for all tiltmeters.


Figure 5 shows water level in feet with respect to the bottom of the IPI-3 housing. A water level of 0 feet would indicate that the water is at the bottom of the IPI-3 housing; a positive value indicates the housing is submerged or partially submerged. Negative values, as shown in Figure 5, indicate that the water level remains below the bottom of the IPI-3 housing.

Cornerpost bracing that was installed by airboat crews was inspected on the morning of Tuesday, October 2. Data indicates that the airboat visits to site IPI-4 caused noise in the data. The post that holds the datalogger housing at IPI-3 was left tilted approximately 30 degrees; on Wednesday morning this was corrected by lashing it upright to another post at the site. This also caused noise in the data. With the additional shoring, however, data noise has been reduced. At 14:45 on Thursday, October 4, IPI-4 recorded approximately 0.01 degrees tilt toward the sinkhole. IPI-5 is recording tilt toward the sinkhole following a linear trend at a rate of approximately 0.0013 degrees/day. Strain left in the system from corner-post construction may cause the posts to tilt over time as they reach equilibrium. Other IPI and tiltmeter data have reflected stable conditions over the past week.

Communication problems have been greatly reduced, but have not been completely solved. Settings in the Atlas server caused issues with communication; but these have been corrected. Antenna were reconfigured to improve communication with site Tilt 8 (Oxy-Geismar 3 pad);

however, the site has currently been offline for 2 days because of unknown causes. Texas Brine Company, LLC will be notified as soon as the communication problem is corrected.

Sincerely,

A handwritten signature in black ink, appearing to read 'E. Krantz', with a stylized flourish at the end.

Eric L. Krantz
Engineer

ELK:llf

cc: Mr. Mark Cartwright, Texas Brine Company, LLC
Project Central File 2153 — Category A

RSI-2153-12-012

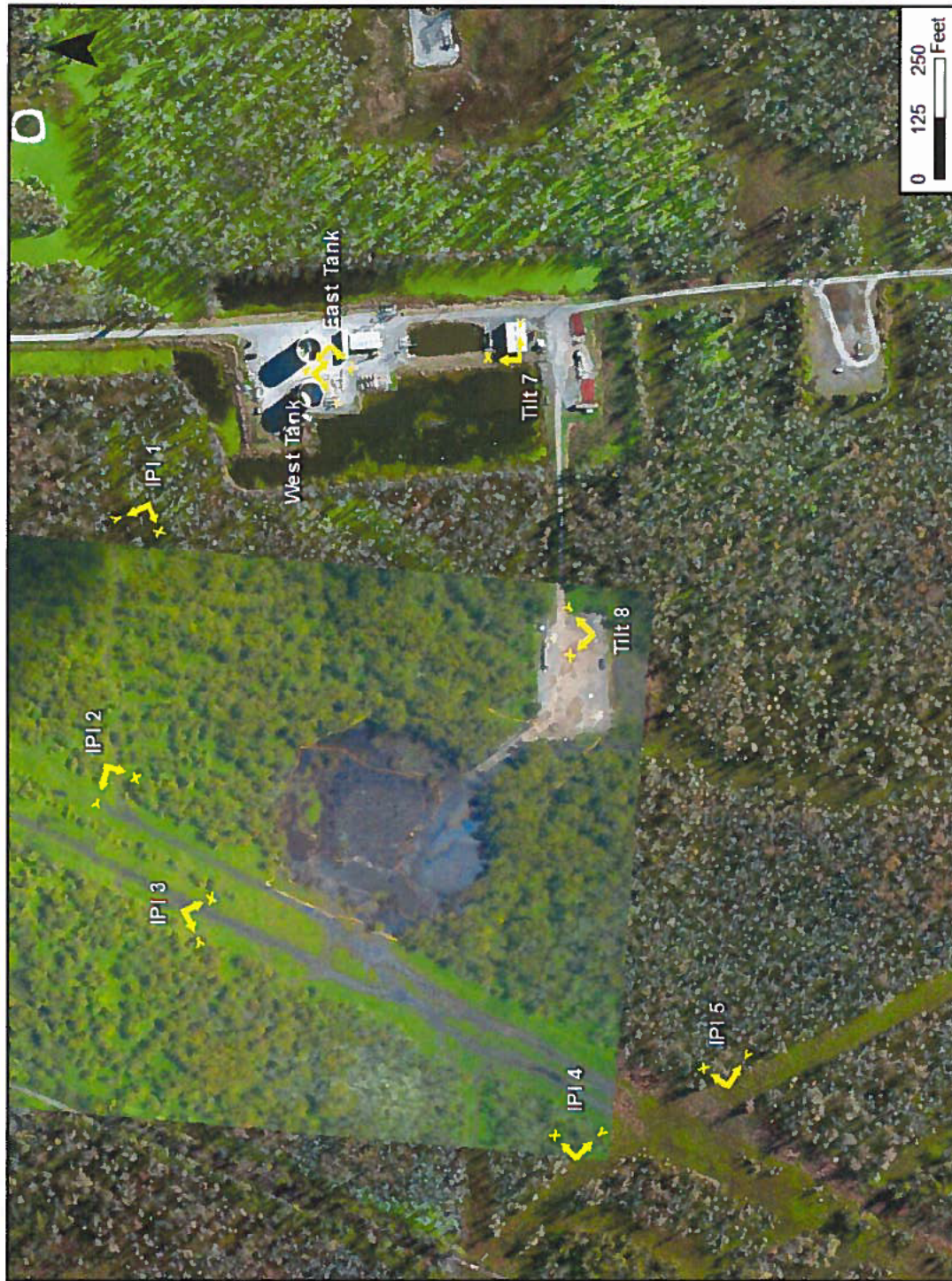


Figure 1. Inclinometer and Tiltmeter Locations.

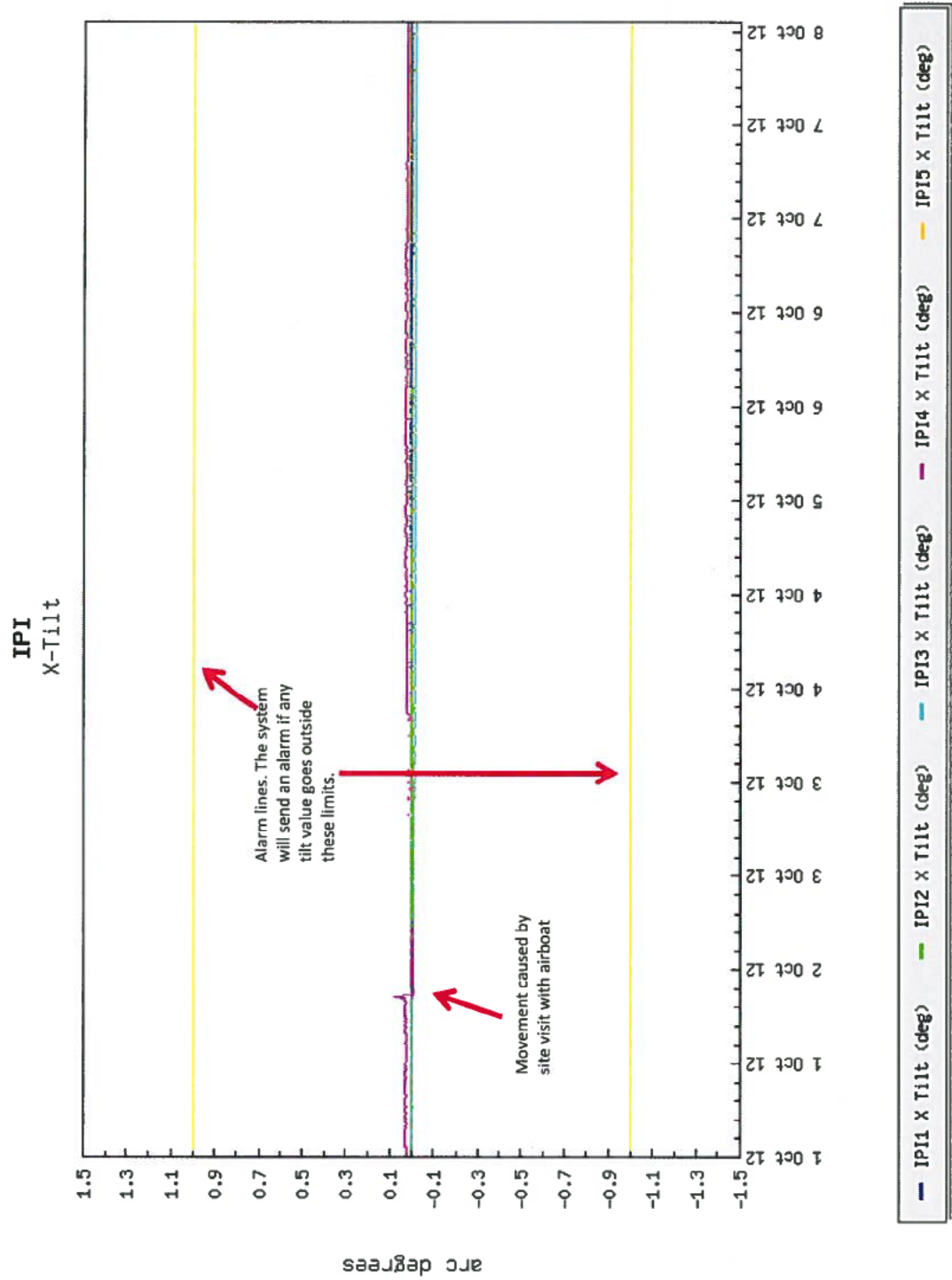


Figure 2. Inclinerometer X-Direction Temporal Trends.

RSI-2153-12-014

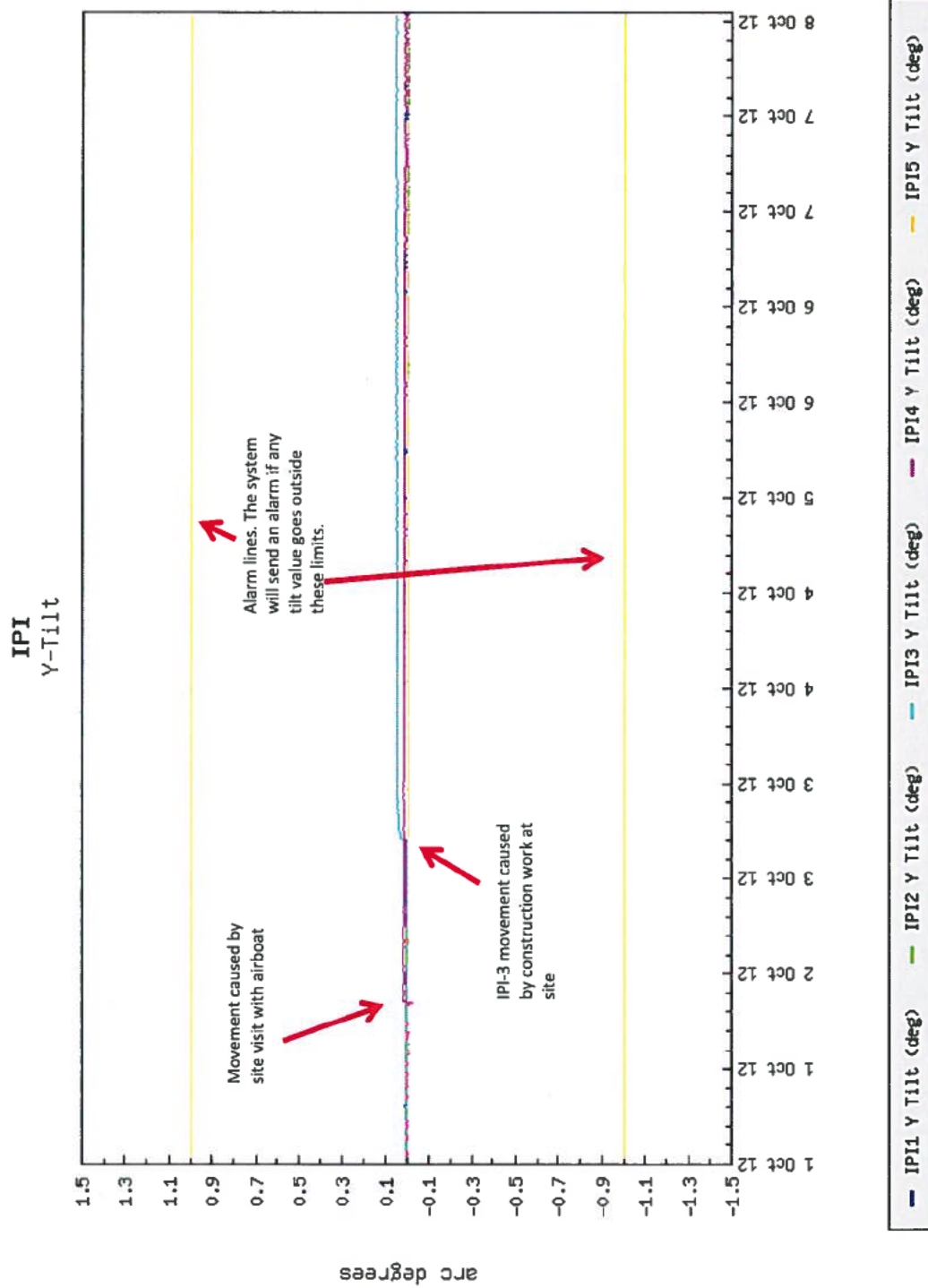
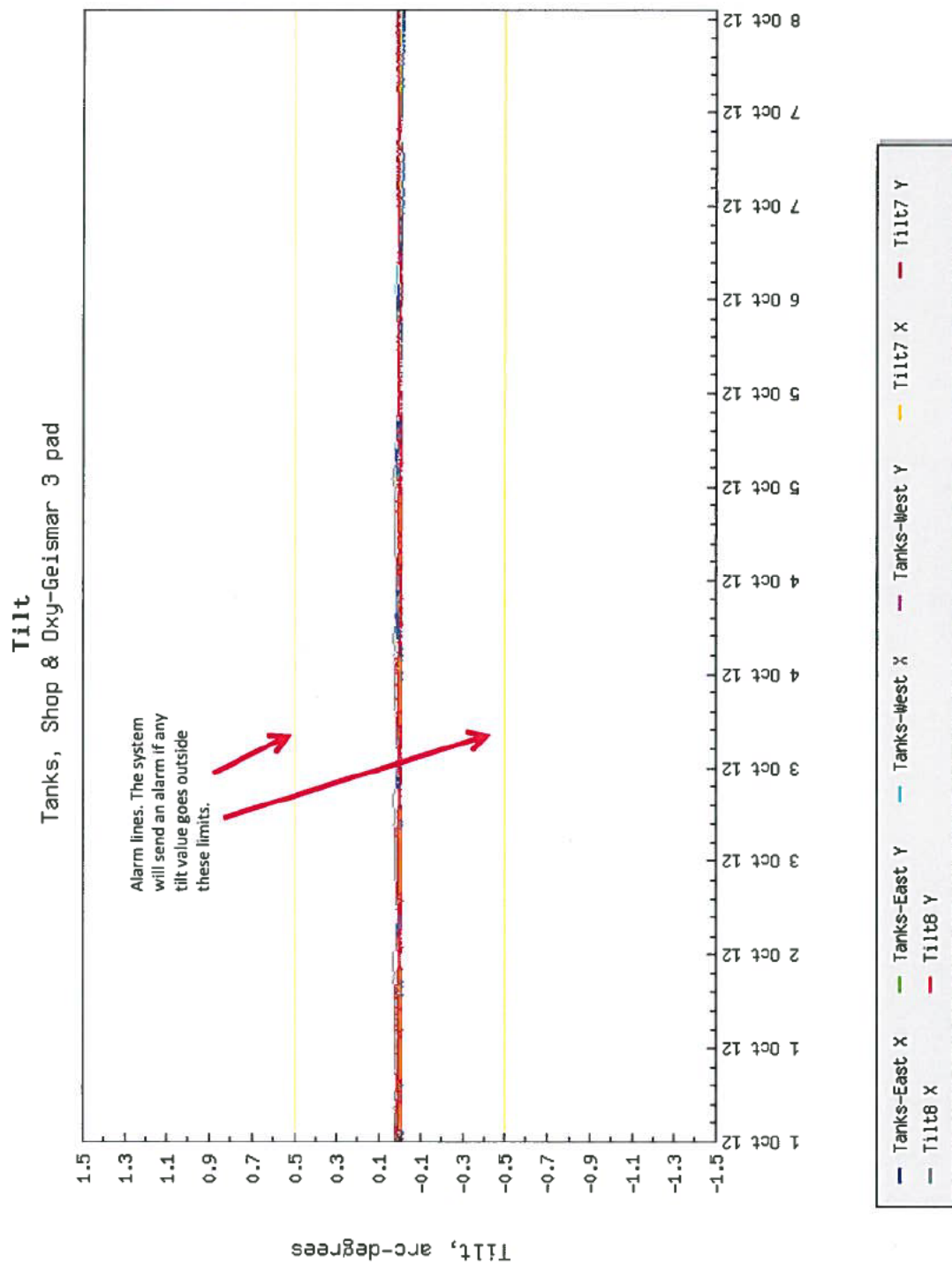


Figure 3. Inclinator Y-Direction Temporal Trends.

RSI-2153-12-015

**Figure 4.** Tiltmeter Temporal Trends.

RSI-2153-12-016

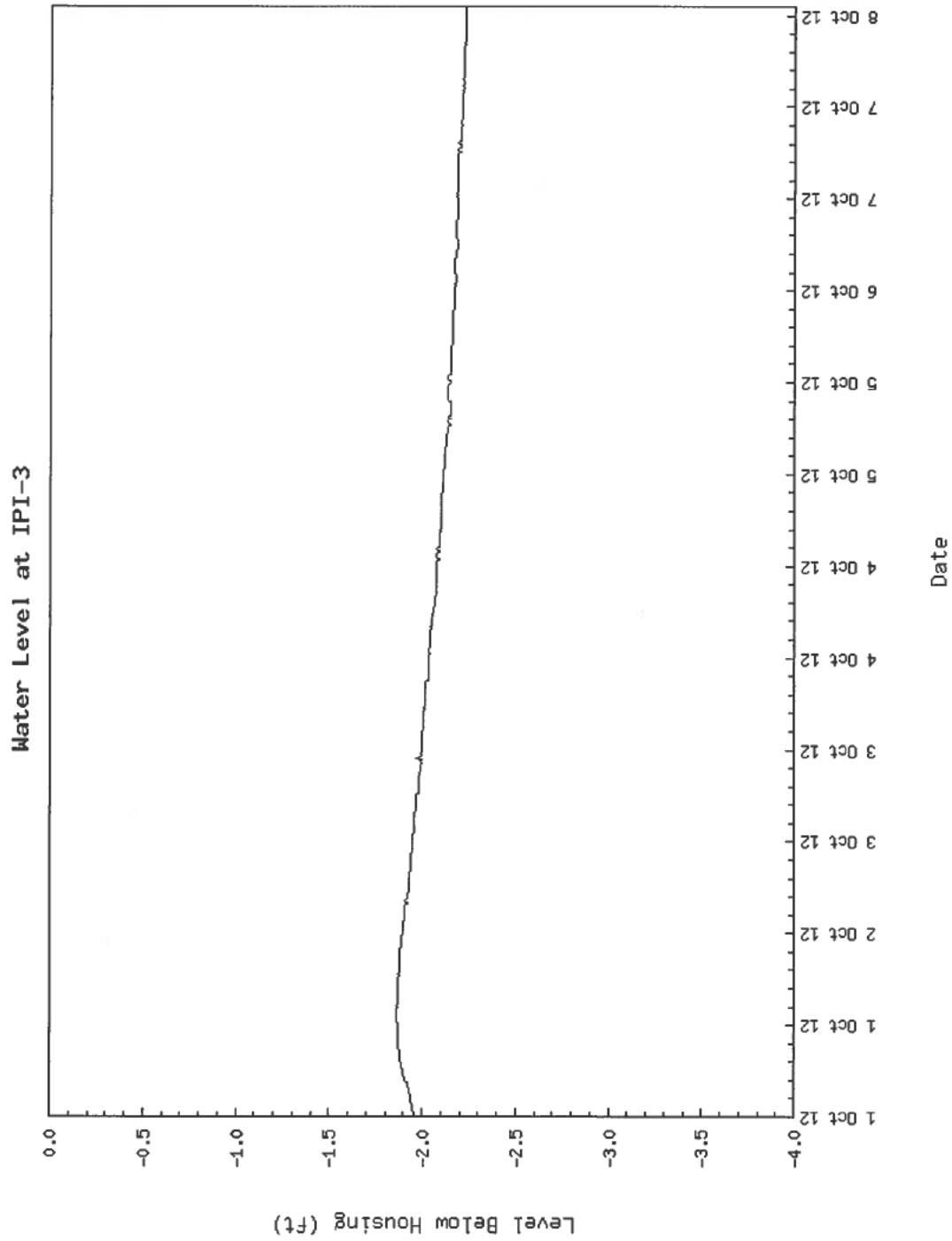


Figure 5. Water-Level Data: Water Level References for the Bottom of Housing of IPI-3.