

**INCIDENT ACTION PLAN**

Be brief and concise with your entries

<b>Location</b> <b>Bayou Corne</b> <b>Sink Hole</b>	<b>Control Level</b> <b>Company Supervisory</b>	<b>Operational Period</b> <b>From 9/11/12 To 9/11/12</b>
---	--	---

<b>1.0 SITUATION</b> Disease, community, environment  PROMPTS: Weather, disease trends, Resources, Hazards & safety  REFERENCE: Maps, weather reports, Sitreps, appreciation, warnings, alerts	<b>CURRENT</b>  Sunny  <b>PREDICTED</b>  Sunny
<b>2.0 OBJECTIVES (or MISSION)</b>  PROMPTS: Time & space  REFERENCE: Appreciation – control options, courses open to disease	<b>CURRENT WORK</b>  Monitor surface water quality around sinkhole to measure salinity levels around the sinkhole.  <b>Work Plan:</b> Personnel will access previously marked surface water sampling locations by airboat (location map attached). Water quality parameters in each location will be measured for electrical conductivity (EC), total dissolved solids (TDS), oxidation reduction potential (ORP), pH and temperature and recorded in a field log book. A table summarizing surface water quality data for 8/20/12 is attached. A photo will be taken at each location. Samples were collected on 8/20/12 and will be collected periodically as needed. Samples are collected by filling an unpreserved plastic jar at the surface of the water. The lid is secured and the sample is placed on ice for shipment to the lab. The samples are under chain of custody from collection until delivery to the lab. Samples will be analyzed for chlorides, TDS and EC. Final laboratory reports may take between 2 to 3 weeks for completion.
<b>3.0 EXECUTION</b> add safety information as appropriate	
<b>GENERAL OUTLINE</b>  PROMPTS: Strategies & tactics (current/proposed/alternate)  REFERENCE: Appreciation, Control Options	<b>Crew Safety:</b> To ensure the safety of the water sampling collection crew, samples will not be collected adjacent to the open sinkhole area or in areas with trees adjacent to the open sinkhole area.  One air monitoring device shall be operated on the boat. The device will monitor H <sub>2</sub> S, O, CO, VOC, and LEL. In addition, air monitor stations (recording the same parameters) will be monitored remotely. PPE will include hearing protection, non-steel toed boots (boating safety), life vests, safety glasses and gloves for collecting and handling samples.
<b>GROUPINGS</b>	<b>NA</b>

<b>TASKS</b> Including PR & Media	<b>Same as above</b>
<b>COORDINATING INSTRUCTIONS</b>  PROMPTS: Timings, routes, assembly areas, staging areas	<b>Texas Brine Grand Bayou Facility will be used as staging area.</b>
<b>4.0 ADMINISTRATION</b> (Logistics support)  PROMPTS: Unit names, locations, contact names, phone no's, timings, duties/tasks, routes, suppliers, quantities, status (required, organised, stand by, enroute)	
<b>SUPPLY</b> WHO, WHAT, WHERE, WHEN of resources not readily available	<b>NA</b>
<b>GROUND SUPPORT</b> Transport of personnel, traffic mgt, refuelling, mechanical repair/maintenance	<b>NA</b>
<b>COMMUNICATIONS</b> Installation, maintenance, technical advice	<b>Cell Phone &amp; Landline Communications:</b> <b>Kenneth Blanchard – Area Manager – 985- (985- )</b> <b>kblanchard@texasbrine.com</b> <b>Scott Borne – Facility Manager – 985- (985- )</b> <b>sborne@texasbrine.com</b> <b>Joel Miller, PE – Consultant – 337- (337- ) <a href="mailto:joel.miller@cox-internet.com">joel.miller@cox-internet.com</a></b> <b>Bruce Martin – Operations/PR – 713- (281- )</b> <b>bmartin@texasbrine.com</b> <b>Mark Cartwright – Technical/Engineering – 713- (281- )</b> <b>mcartwright@unitedbrine.com</b> <b>Scott Whitelaw – Environmental/Safety – 713- (713- )</b> <b><a href="mailto:swhitelaw@tum.com">swhitelaw@tum.com</a></b>
<b>STAGING AREA/ FCP</b> Setting up, communications, staffing	<b>Texas Brine Grand Bayou Facility</b> <b>1301 Hwy 70 South, Belle Rose, La 70341</b>
<b>5.0 ADMINISTRATION</b> (Logistics services)  PROMPTS: Unit names, locations, contact names, phone no's, timings, duties/tasks, routes, suppliers, quantities, status (required, organised, stand by, enroute)	
<b>FACILITIES</b> Security, waste, cleaning	<b>NA</b>

CATERING	NA
OH&S/MEDICAL Medical plan, first aid plan	Call 911
FINANCE	NA
TRAVEL	NA
INDUCTION/ TRAINING	NA
ACCOMMODATION	NA
<b>6.0 CONTROL, COORDINATION &amp; COMMUNICATION</b>	
CONTROL & COORDINATION STRUCTURE  REFERENCE Structural Chart	Plant Management Supervision / Contractor Work
COORDINATION & LIAISON  Local knowledge, police, agency reps, emergency mgt reps	NA
COMMUNICATIONS  PROMPTS Communications structure, operational comms plan, information mgt	Plant Management – Contractor Communication via Cell Phone

<b>EXTRAS</b>	
<b>Attachments</b> PROMPTS: maps, weather, organisational charts, resources, comms diagram	<b>Site Map</b> <b>Current Weather</b> <b>Safe Work Rules</b>

	<b>Safety Training Log</b>
<b>Plan developers</b> PROMPTS PO, Logs Mgr, Controller	NA
<b>Approval</b> Controller, Ops Director	TBC Company Rep: <i>Scott Corne</i> FOSC: SOSC: POSC:

FRANKLIN, LA.

$$12 = 400'$$

WATER SAMPLES

T.B.M. 6

WATER SAMPLES

19

WATER W

WATER WELL 5

3

100

TBC LEASE LINE

WHITE

OXY GPS #4

WEED 10 - REFERENCE PT.

GPS BASE

T.B.M. 4



# TEXAS BRINE COMPANY, LLC AND AFFILIATED COMPANIES

Safe Work Practices

UNDERGROUND  
STORAGE, LLC



UNITEDBRINE

PERFECT BLUE COMPANY, LLC

UNITEDBRINE

PERFECT BLUE COMPANY, LLC

TEXAS BRINE COMPANY, LLC

PERFECT BLUE COMPANY, LLC

PERFECT BLUE COMPANY, LLC



RESPONSIBLE CARE

American  
Chemistry  
Council

62°F

Belle Rose, Louisiana

Enter City, State, Country or U.S. Zip code or Airport Id

Local Weather

[Local](#) [National](#) [Global](#) [Storms](#) [Health](#) [Travel](#) [Community](#) [Forecast](#) [Current](#) [Radar](#) [Satellite](#) [wxMap](#) [iNav](#)

## Weather Report

[Home](#) » [Local](#) » [Weather Report](#) 

## Belle Rose, Louisiana

[Weather Report](#) | [Interactive Weather Map](#) | [Extended Forecast](#) | [Hourly Forecast](#) | [Past Observations](#) | [Historic Averages](#) | [Related](#) ▼   

Current Conditions - °F | °C

As of 6:53 AM on Tuesday 11 Sep 2012 (Local Time) from KBTR Reporting Station



Clear

62°F

Feels Like: 62°

Wind Chill: 62°    Ceiling: Unl  
Heat Index: 62°    Visibility: 10mi  
Dew Point: 59°    Wind: 3mph  
Humidity: 90%    Direction: 40° (NE)  
Pressure: 30.11"    Gusts: NA

**Report Text:** KBTR 111153Z 04003KT 10SM CLR 17/15 A3011  
RMK AO2 SLP194 T01670150 10178 20161 53011

## Today's Forecast

8 AM  
Sunny

68°

9 AM  
Sunny

74°

10 AM  
Sunny

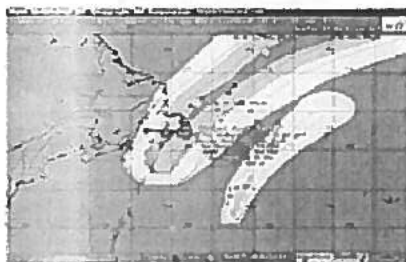
80°

## Local Information

No Weather Alerts  
for this location
[View Detailed Observations for the last  
48 Hours · 14 Days](#)
[View Complete Hourly Forecast »](#)[Radar](#) · [Satellite](#) · [Surface Analysis](#)

## Tropical Storm Tracking

## Tropical Storm Leslie

[Current Track](#) | [Visible](#) | [Infrared](#)

## Tropical Storm Michael

[Current Track](#) | [Visible](#) | [Infrared](#)[View Complete Tropical Storm Track List »](#)

## New Forecast Map Updates

Plan your seasonal activities better

[Click here to learn more...](#)

10 Day Forecast - °F | °C

[View the Detailed Extended Forecast »](#)

tue	wed	thu	fri	sat	sun	mon	tue	wed	thu
sep 11	sep 12	sep 13	sep 14	sep 15	sep 16	sep 17	sep 18	sep 19	sep 20
M Sunny	M Sunny	Iso T-Storms	M Sunny	Iso T-Storms	Sct T-Storms	Iso T-Storms	M Sunny	Sct Showers	Sct T-Storms
88° 70°	88° 72°	86° 72°	88° 71°	88° 72°	83° 72°	85° 71°	86° 72°	87° 72°	84° 73°

**Details for Tuesday, September 11**

Sunshine and a few afternoon clouds. High 88F. Winds ENE at 5 to 10 mph.

**Evening:** Partly cloudy skies. Low around 70F. Winds light and variable.

UV Index: 10 (Very High)

Relative Humidity: 61%

Precipitation: 10%

Snow: 0%

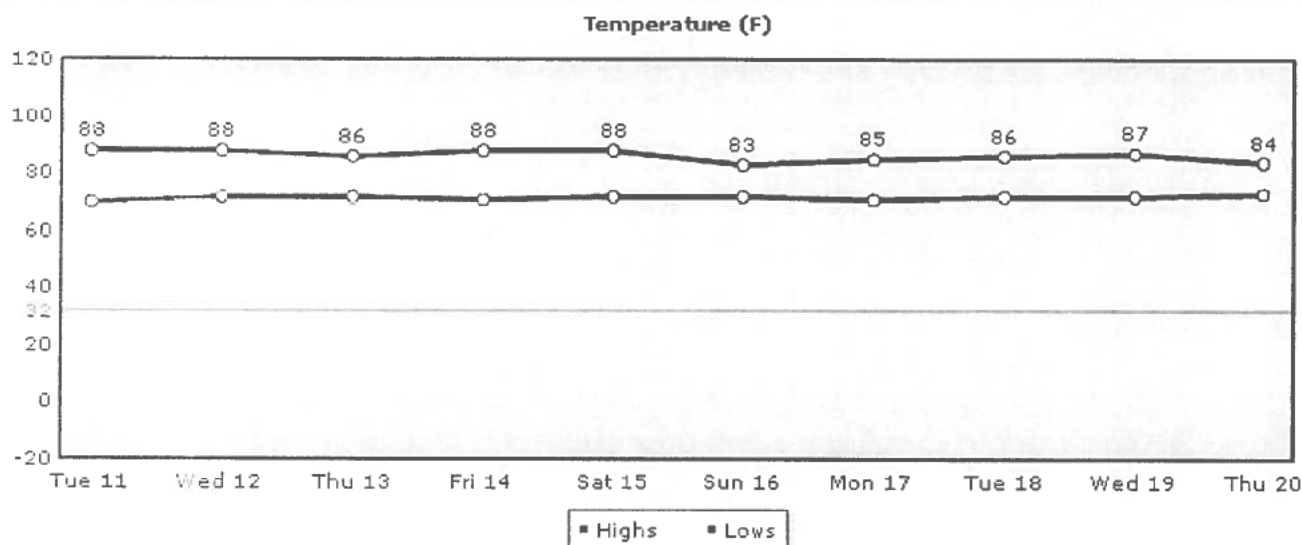
Cloud Coverage: 25%

**Sunrise:** 6:47 AM**Sunset:** 7:14 PM**Moonrise:** 2:21 AM**Moonset:** 4:10 PM**Moonphase:**

Waning Crescent

**Direction:** ENE (68°)**Speed:** 9Mph(14Km, 7Kts)**Daily Forecast Chart**

Chart Options: Temperature ▾


[Temperature](#)
[UV Index](#)
[Relative Humidity](#)
[Precipitation](#)
[Snow](#)
[Clouds](#)
[Wind](#)
[Daily Forecast](#)
[Hourly Forecast](#)
[Past Observations](#)
[Historic Averages](#)
**More from Intellicast**

Check Out Our  
**Interactive Weather Map**

**Articles**

- [Local Weather Maps](#)
- [US Weather Maps](#)
- [US Current Weather](#)
- [Global Weather Maps](#)
- [Weather Analysis Charts](#)
- [Active Storm Track](#)
- [Weather Tools](#)

**Weather Center****Weather Alerts**

Current National Weather Service Watches and Warnings by type and state throughout the United States.

**Ski & Snow**

The Ski & Snow Section is where you can get the latest ski resort conditions and snow forecasts.

Intellicast.com: The Authority in Expert Weather

Your use of this site constitutes your acceptance of the Terms of Use and Privacy Policy

2012 WSI Corporation - v4.5.001:ICAST-WEB4