

LUW Lookup – other info review prior to data entry – Unit Basis HC wells

Unit basis (; in well name) cross unit wells (wells with names that end in HC) have multiple LUWs assigned. The LUW information is included on the cross unit well worksheet with the amendment. There are different operations to key in unit basis cross unit wells LUW codes.

Example of unit basis (; in name) cross unit (ends in HC) well with LUWs:

OPERATOR: **BPX OPERATING COMPANY** CODE NO. **B6983**

ADDRESS: **15377 Memorial Dr, Houston, TX 77079**

WELL NAME: **HA RA SUZZ;ELSTON 21-28HC** No. **1-ALT** LUW: _____

LOCATION: Section: **16** Township: **16N** Range: **11W**

Surface Location: **348' FSL 1795' FEL of Sec 10-T16N-R11W Bossier Parish** *Same*

BHL 358' FSL 1590' FEL of Sec 28-T16N-R11W Bossier Parish *Well path*

HA RA SU104

Unit basis cross unit LUWs are assigned by:

- As-drilled location amendments
- Lease to unit amendments
- Operator change LUW consolidations

Confirm %s on worksheet match that depicted on the plat. Must add up to 100%. Limited to 2 decimal places.

Example of unit basis cross unit well worksheet:

SN 253218

Unit Order Information

Well orientation: North to south

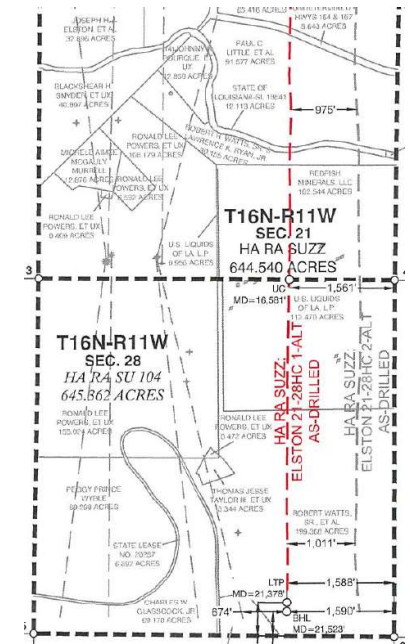
Top of Perfs Unit

Bottom Perfs Unit

Unit	HA RA SUZZ
Order No.	361-L-229
Effective	6/8/2021
Acreage	640
Product	Gas
Completion	7/6/2022
LUW	615541
Percentage	50.72%
Field	Elm Grove (3608)
Multi Parish Unit?	Bossier

Unit	HA RA SU104
Order No.	361-L-229
Effective	6/8/2021
Acreage	640
Product	Gas
Completion	7/6/2022
LUW	616197
Percentage	49.28%
Field	Elm Grove (3608)
Multi Parish Unit?	Bossier

If you receive a unit basis cross unit as-drilled amendment for a well that does not have LUWs yet has a completion date (ie, requires LUW assignment), contact engineer for worksheet.



PRODUCING LATERAL LENGTH SEC. 21 = 4,937' (50.72%)
PRODUCING LATERAL LENGTH SEC. 28 = 4,797' (49.28%)
TOTAL PRODUCING LATERAL LENGTH = 9,734' (100%)

LUW Lookup – other info review prior to data entry – Unit Basis HC wells

Conservation (E and G) > fields > Maintain LUW

Unit basis cross unit wells with LUW code assignment require the LUW history records to have the cross unit flag (v) selected in sequence to the earliest cross unit well associated with the LUW. In the depicted example, LUWs 615541 and 616197 must have cross unit flag selected since at least 7/6/2022 (m). Visit Maintain LUW and query each record to confirm cross unit flag selected.

Top of Perfs Unit		Bottom Perfs Unit		Note- LUW cross unit flag (v) effective date (m) is determined by arrow on cross unit worksheet. In all cases, the LUW cross unit effective date (m) cannot precede the cross unit Order effective date (s). Both LUWs will have same effective dates. If conflict, ask engineer.
Unit	d.i HA RA SUZZ	Unit	d.ii HA RA SU104	
Order No.	361-L-229	Order No.	361-L-229	
Effective	S 6/8/2021	Effective	S 6/8/2021	
Acreage	640	Acreage	640	
Product	Gas	Product	Gas	
Completion	m 7/6/2022	Completion	7/6/2022	
LUW	C.i 615541	LUW	C.ii 616197	
Percentage	50.72%	Percentage	49.28%	
Field	a.i Elm Grove (3608)	Field	a.ii Elm Grove (3608)	
Multi Parish Unit?	Bossier	Multi Parish Unit?	Bossier	

BPX OPERATING COMPANY	CODE NO. b B6983
15377 Memorial Dr, Houston, TX 77079	LUW 615541 → 50.72% LUW 616197 → 49.28%

SRCN2010 - Maintain LUW 01/25/2023 01:02 PM

Strategic Online Natural Resources Information System

LUW Code **615541 C.i.2** UNIT **HA RA SUZZ; d.i**

☒ Survey Plat ☐ LUW Checked
Survey Email Sent Reason for Email

Effective Date **m** 07/06/2022 End Date

Product Type 20 GAS

Field ID 3608 **a.i** ELM GROVE ☒ Competitive Unit ☒ Cross-Unit Flag **V**

LUW Status ACTIVE Organization B6983 **b** BPX OPERATING COMPANY 01 PRODUCER/OPERATOR

Sand HA Reservoir RA Order Num 361-L-229 Effective Date 06/08/2021 **S** Unit 640 Acreage

SRCN2010 - Maintain LUW 01/25/2023 01:02 PM

Strategic Online Natural Resources Information System

LUW Code **616197 C.ii** UNIT **HA RA SU104; d.ii**

☒ Survey Plat ☐ LUW Checked
Survey Email Sent Reason for Email

Effective Date **m** 07/06/2022 End Date

Product Type 20 GAS

Field ID 3608 **a.ii** ELM GROVE ☒ Competitive Unit ☒ Cross-Unit Flag **V**

LUW Status ACTIVE Organization B6983 **b** BPX OPERATING COMPANY 01 PRODUCER/OPERATOR

Sand HA Reservoir RA Order Num 361-L-229 Effective Date 06/08/2021 **S** Unit 640 Acreage

Effective Date 08/01/2019 End Date 07/05/2022 LUW Name HA RA SU104;

Product Type 20 GAS

Field ID 3608 ELM GROVE ☒ Competitive Unit ☐ Cross-Unit Flag

LUW Status ACTIVE Organization B6983 BPX OPERATING COMPANY 01 PRODUCER/OPERATOR

Sand HA Reservoir RA Order Num 361-L-110 Effective Date 10/18/2011 Unit 39640 Acreage

Both LUWs have necessary cross unit flag selected and LUW names (d.i, d.ii), operator (b), field (a.i, a.ii) match pink and worksheet. Ready for data entry. Proceed to LUW Assignment – HC Unit Wells.