

SNT Satellite Update
InSAR Subsidence
September 27, 2023

Longquist comment:

The PAZ satellite from the TSX/PAZ constellation (4 & 7-day revisit) passed by Sulphur on Wednesday September 27. We received the dataset Friday and noted that the newest datapoint is continuing in the direction of the “recent” trends across all AOI regions. The recent trends are currently being plotted on the data span of 3/24/2023 to present. The “historical” data trends continue to be calculated from a data span of 1/24/2023 - 8/3/2023, before trend departure was observed.

As with the prior update, we have appended a review of the distant “Additional” locations of interest to this report, where we are still seeing similar or greater acceleration increases.



TSX/PAZ Satellite Update

Continuous InSAR Monitoring of Ground Displacement Near Western Caverns and Dome Flank Sulphur Mines Salt Dome

Prepared for:
Westlake Chemical

Prepared by:
Lonquist & Co., LLC
8591 United Plaza Blvd.
Suite 280
Baton Rouge, LA 70809



Date Signed: October 2, 2023
Austin, Texas

Nathaniel L. Byars, P.E.
Principal Engineer
Louisiana License No. 40697

Dataset

Satellite Source

TerraSAR-X - PAZ Constellation

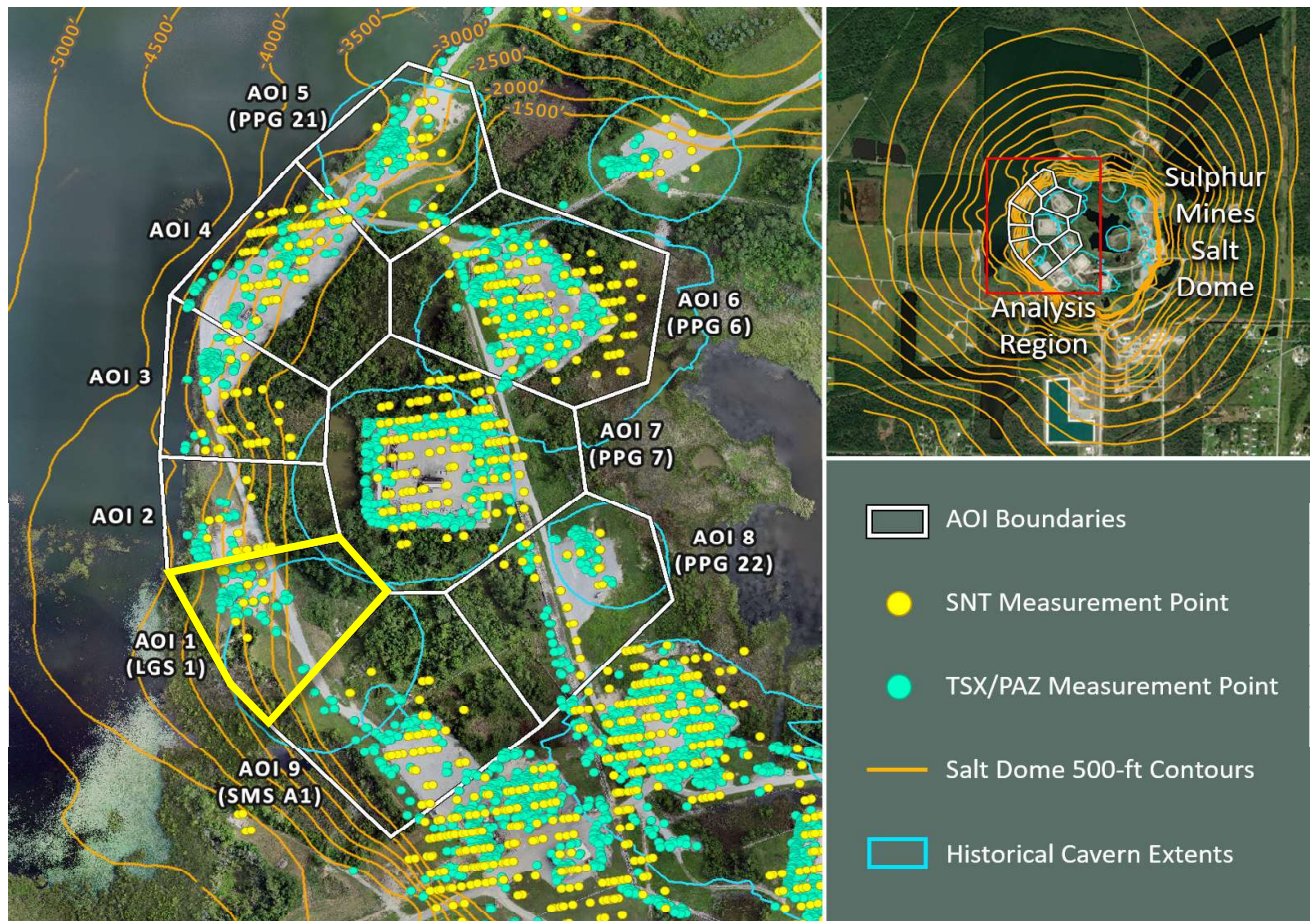
Most Recent Image Date

Wednesday, September 27, 2023

Analysis Report Date:

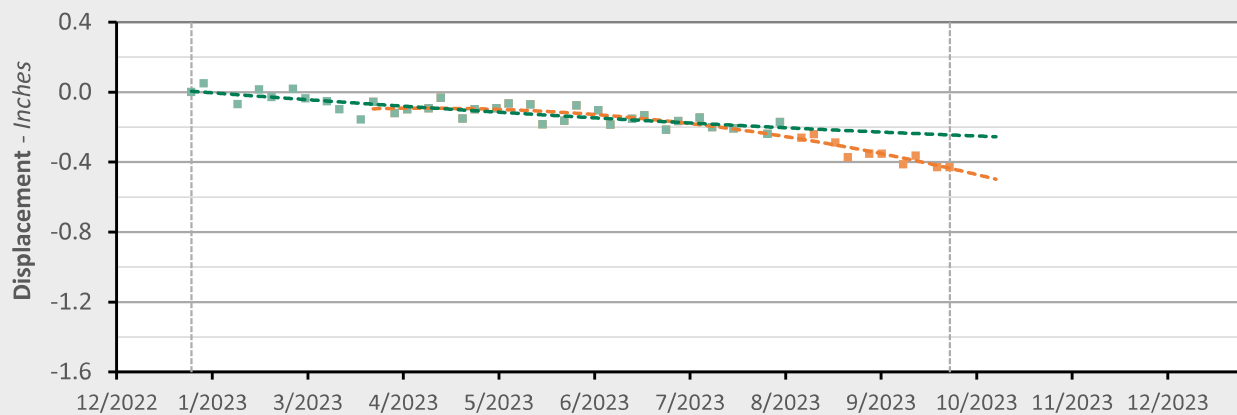
October 2, 2023

AOI 1 (LGS 1) - Location Map



AOI 1 (LGS 1) - Displacement Time Series

TSX/PAZ (9/27/2023) Point Count: **77**



	As of 8/3/23	3/24/2023 - 9/27/23	Trend Change
Velocity:	-0.31 in/yr	-1.47 in/yr	-1.16 in/yr
Acceleration:	+0.34 in/yr ²	-3.15 in/yr ²	-3.49 in/yr ²

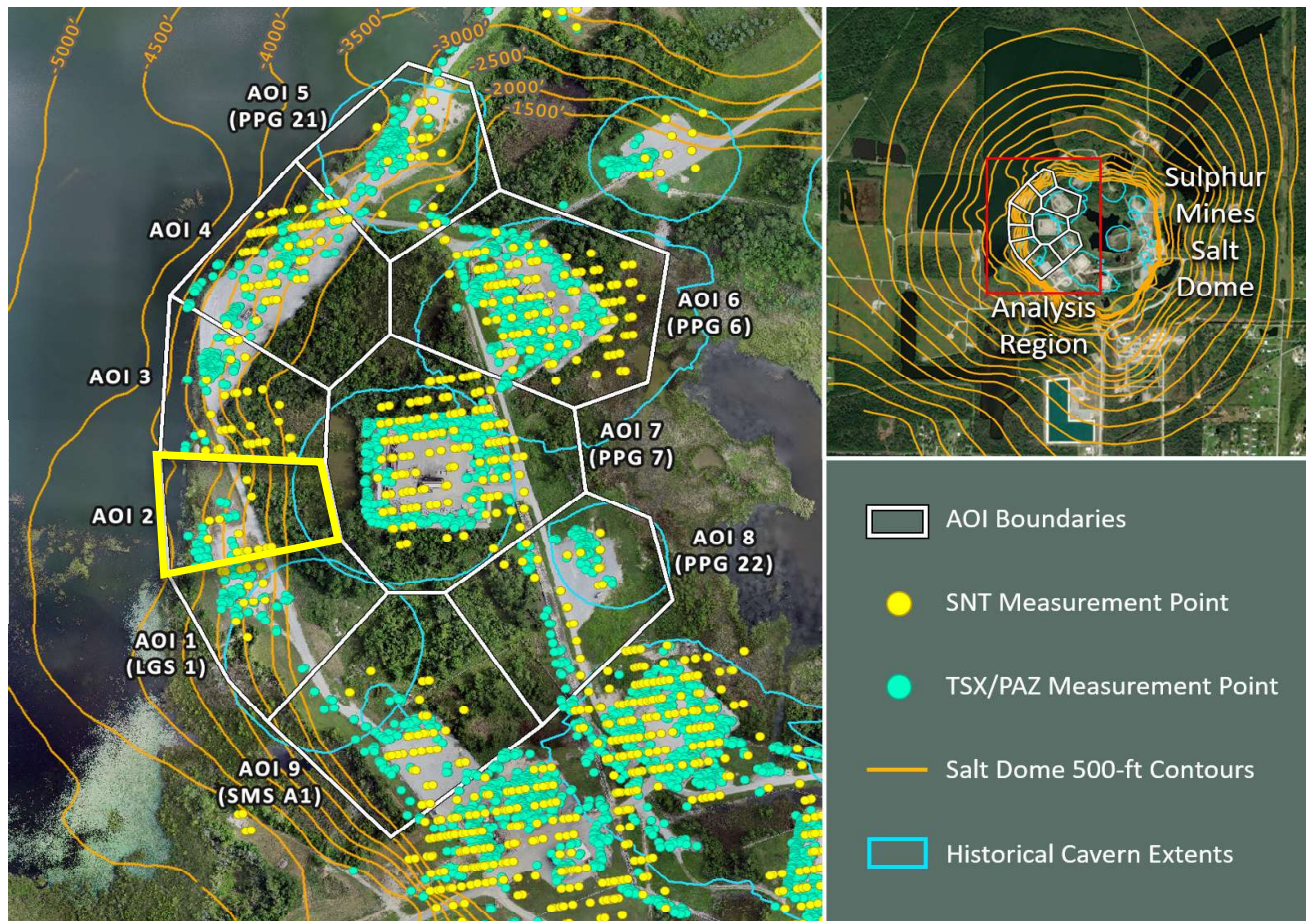
■ Historical LOS Displacement Measurement

--- Historical Trend Line (Quadratic Regression)

■ Recent LOS Displacement Measurement

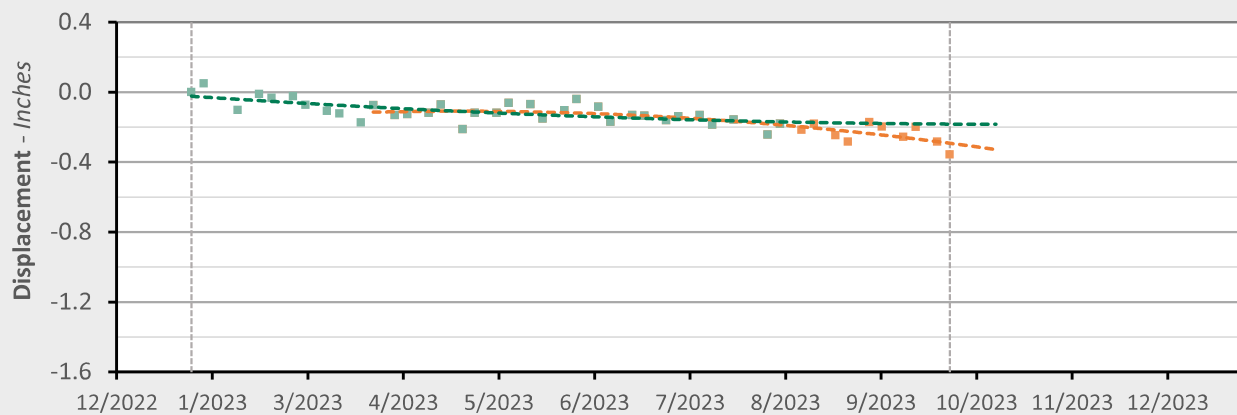
--- Recent Trend Line (Quadratic Regression)

AOI 2 - Location Map



AOI 2 - Displacement Time Series

TSX/PAZ (9/27/2023) Point Count: **42**



	As of 8/3/23	3/24/2023 - 9/27/23	Trend Change
Velocity:	-0.13 in/yr	-0.84 in/yr	-0.71 in/yr
Acceleration:	+0.58 in/yr ²	-1.94 in/yr ²	-2.52 in/yr ²

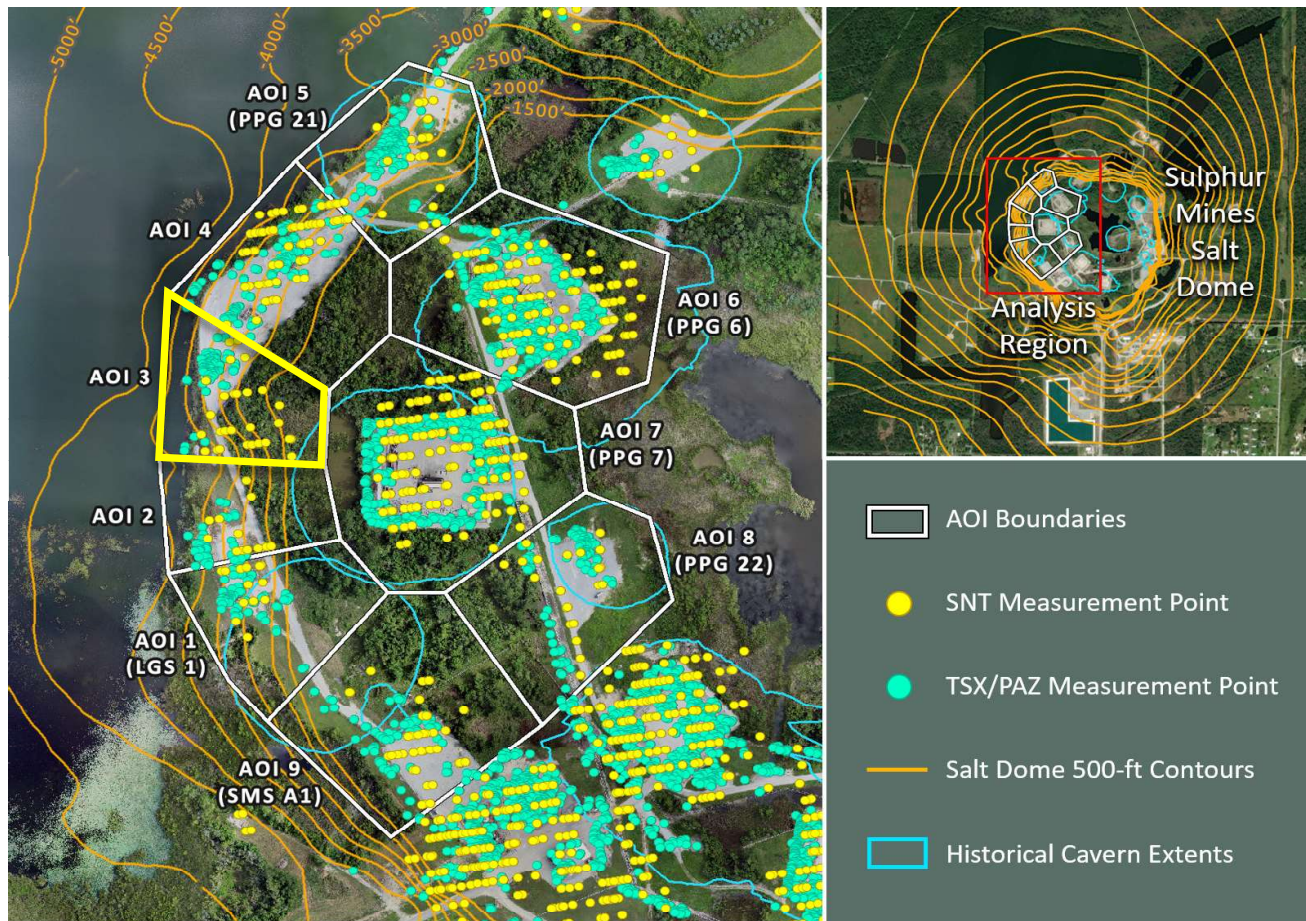
■ Historical LOS Displacement Measurement

--- Historical Trend Line (Quadratic Regression)

■ Recent LOS Displacement Measurement

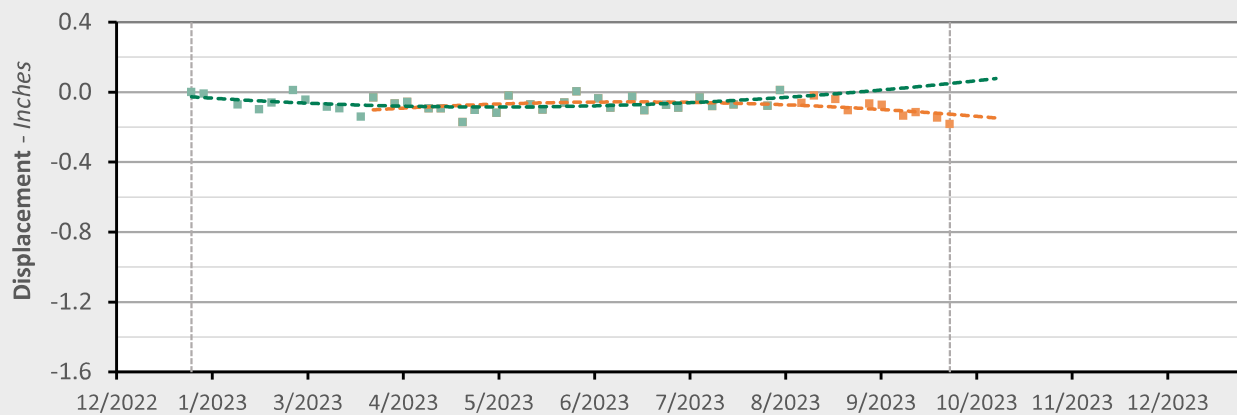
--- Recent Trend Line (Quadratic Regression)

AOI 3 - Location Map



AOI 3 - Displacement Time Series

TSX/PAZ (9/27/2023) Point Count: **81**



	As of 8/3/23	3/24/2023 - 9/27/23	Trend Change
Velocity:	+0.42 in/yr	-0.49 in/yr	-0.91 in/yr
Acceleration:	+1.63 in/yr ²	-1.74 in/yr ²	-3.37 in/yr ²

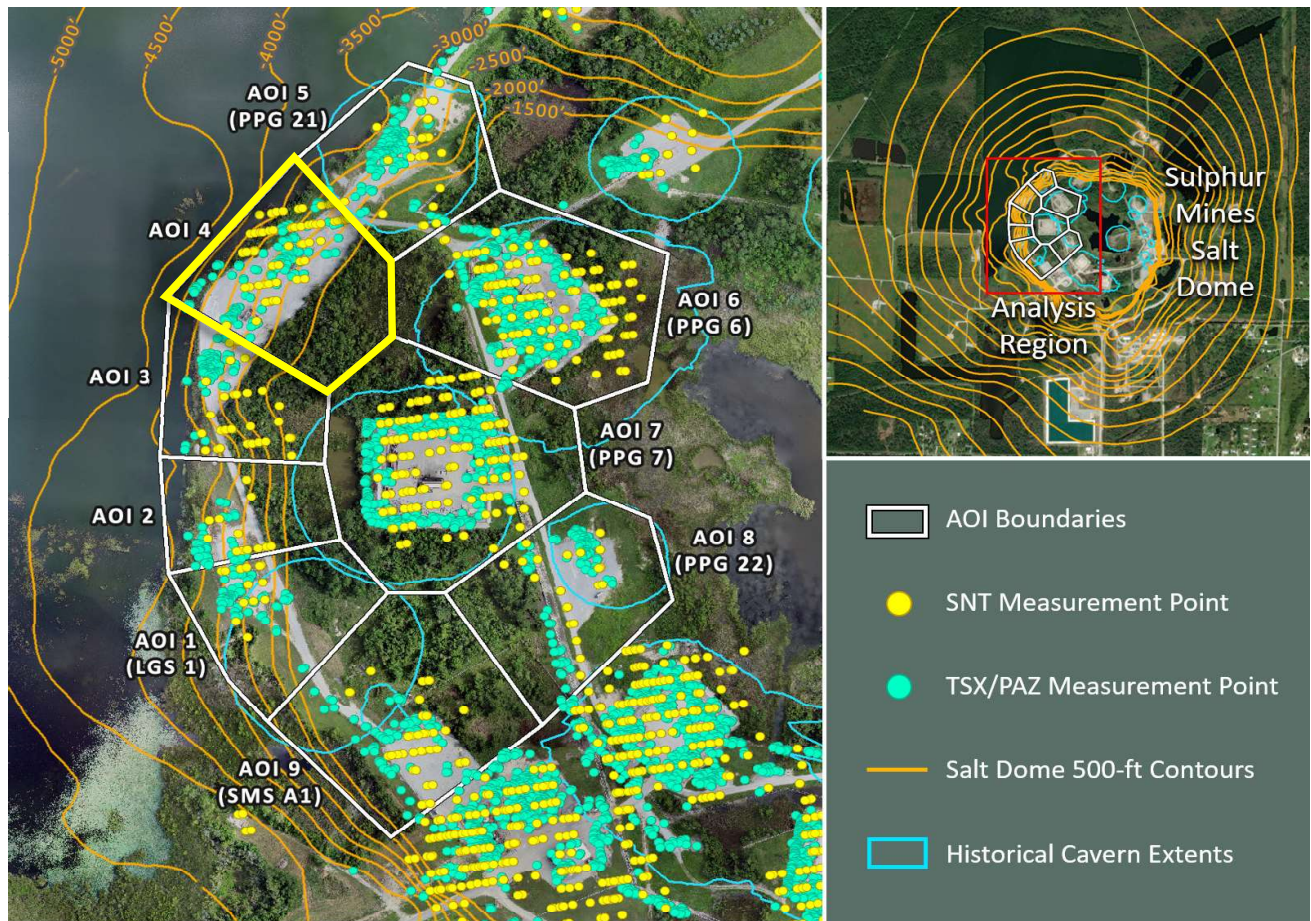
■ Historical LOS Displacement Measurement

--- Historical Trend Line (Quadratic Regression)

■ Recent LOS Displacement Measurement

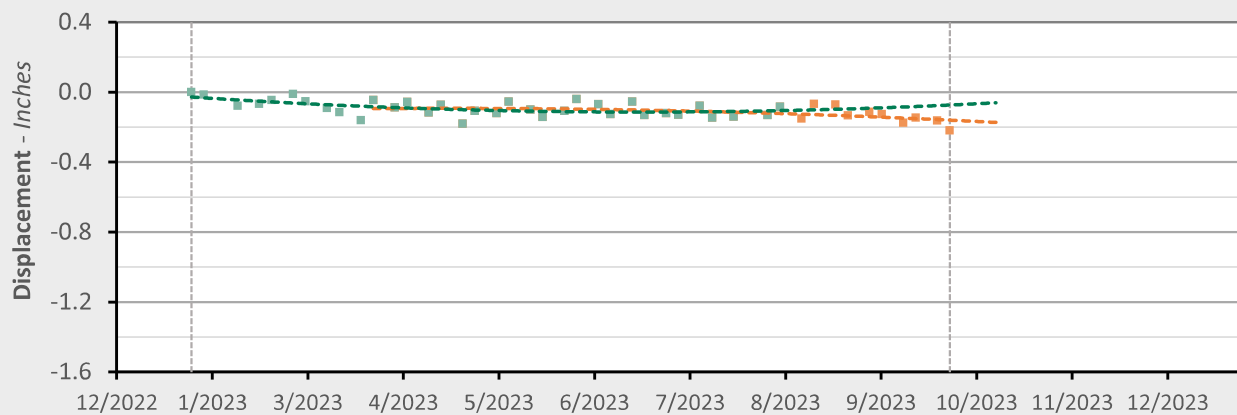
--- Recent Trend Line (Quadratic Regression)

AOI 4 - Location Map



AOI 4 - Displacement Time Series

TSX/PAZ (9/27/2023) Point Count: 140



	As of 8/3/23	3/24/2023 - 9/27/23	Trend Change
Velocity:	+0.13 in/yr	-0.30 in/yr	-0.44 in/yr
Acceleration:	+1.07 in/yr ²	-0.68 in/yr ²	-1.76 in/yr ²

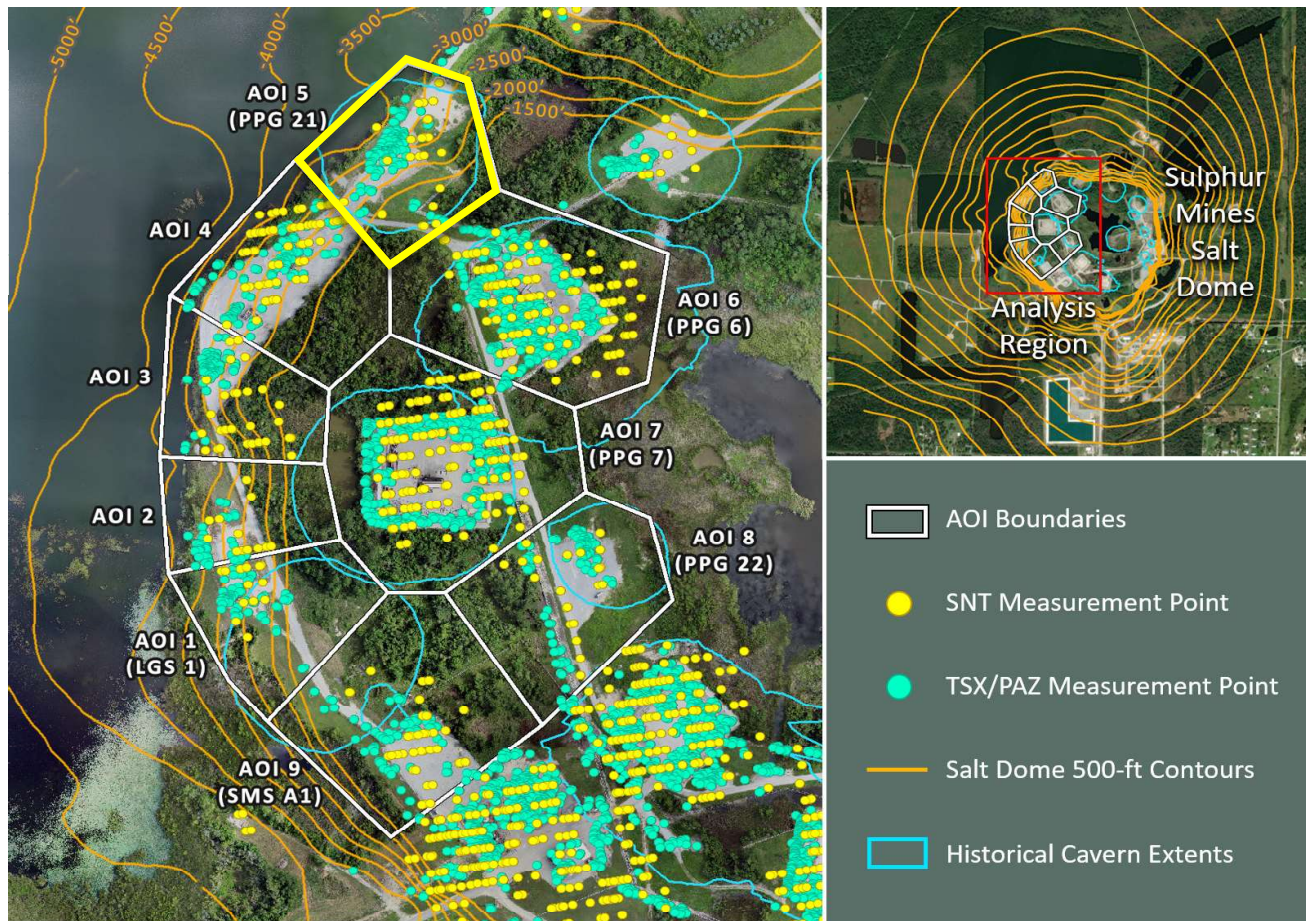
■ Historical LOS Displacement Measurement

--- Historical Trend Line (Quadratic Regression)

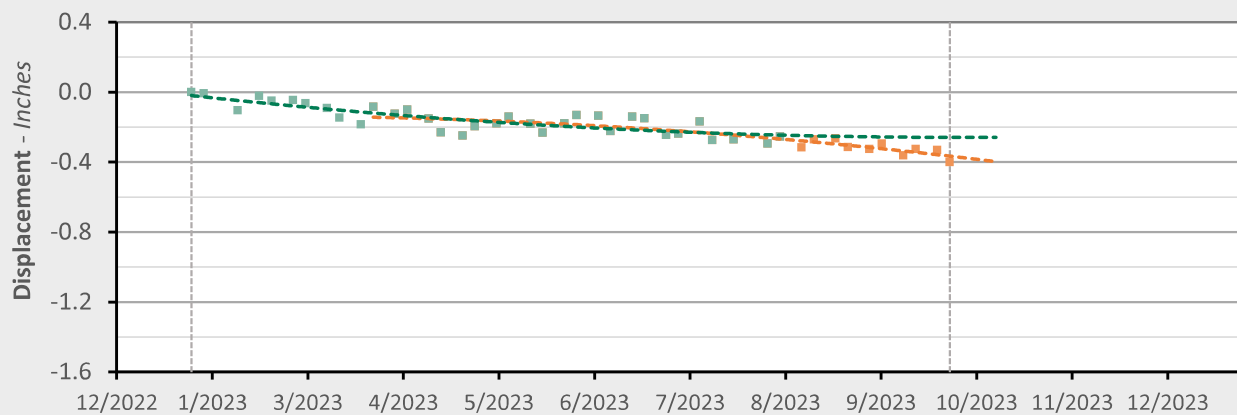
■ Recent LOS Displacement Measurement

--- Recent Trend Line (Quadratic Regression)

AOI 5 (PPG 21) - Location Map



AOI 5 (PPG 21) - Displacement Time Series TSX/PAZ (9/27/2023) Point Count: 136



	As of 8/3/23	3/24/2023 - 9/27/23	Trend Change
Velocity:	-0.16 in/yr	-0.74 in/yr	-0.58 in/yr
Acceleration:	+1.03 in/yr ²	-1.20 in/yr ²	-2.23 in/yr ²

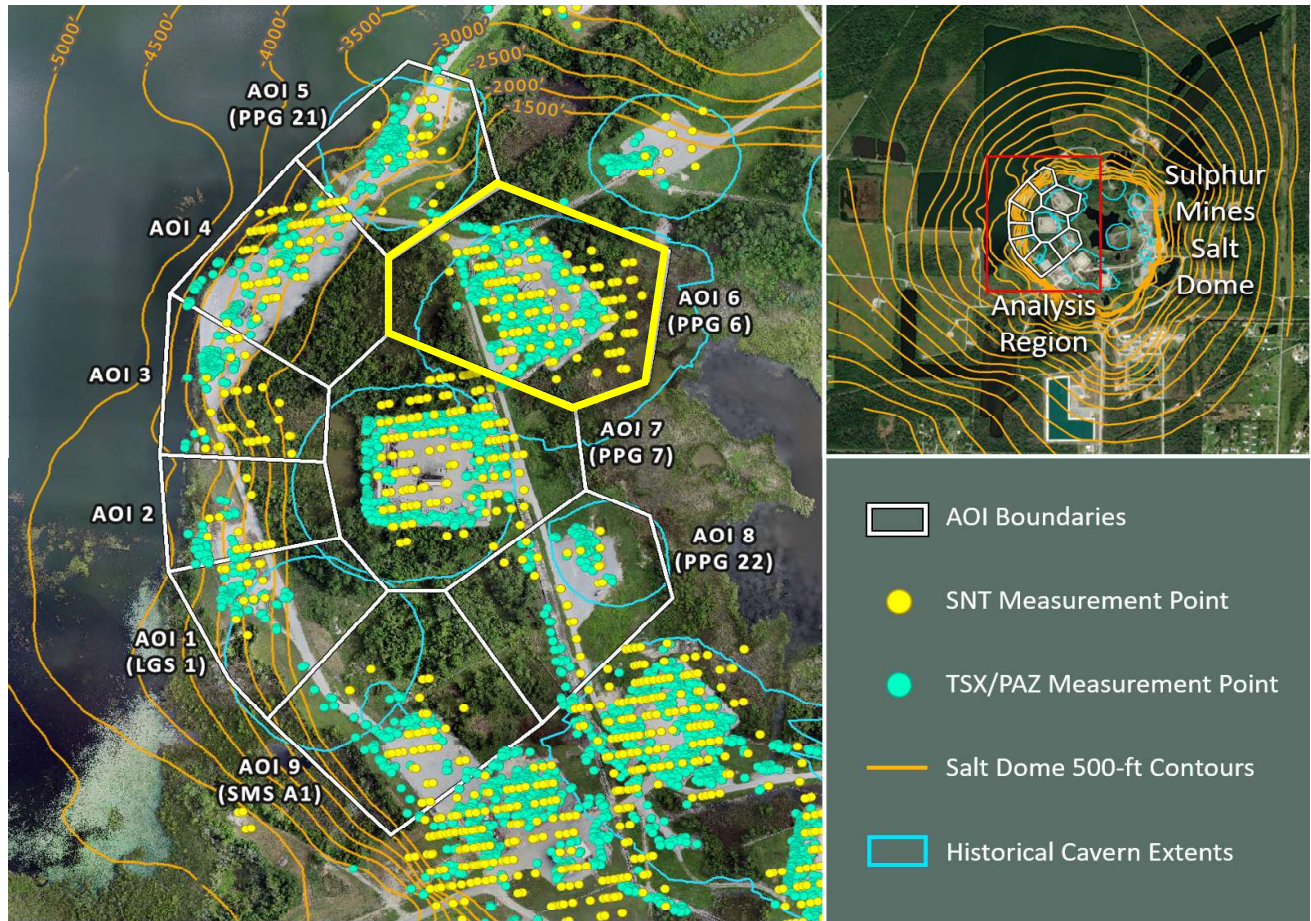
■ Historical LOS Displacement Measurement

--- Historical Trend Line (Quadratic Regression)

■ Recent LOS Displacement Measurement

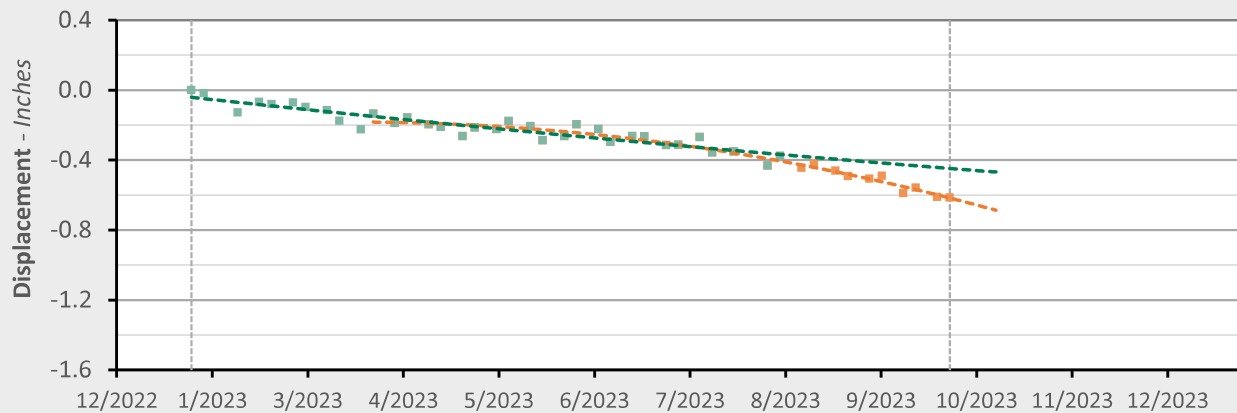
--- Recent Trend Line (Quadratic Regression)

AOI 6 (PPG 6) - Location Map



AOI 6 (PPG 6) - Displacement Time Series

TSX/PAZ (9/27/2023) Point Count: 428



	As of 8/3/23	3/24/2023 - 9/27/23	Trend Change
Velocity:	-0.55 in/yr	-1.64 in/yr	-1.09 in/yr
Acceleration:	+0.28 in/yr ²	-3.09 in/yr ²	-3.37 in/yr ²

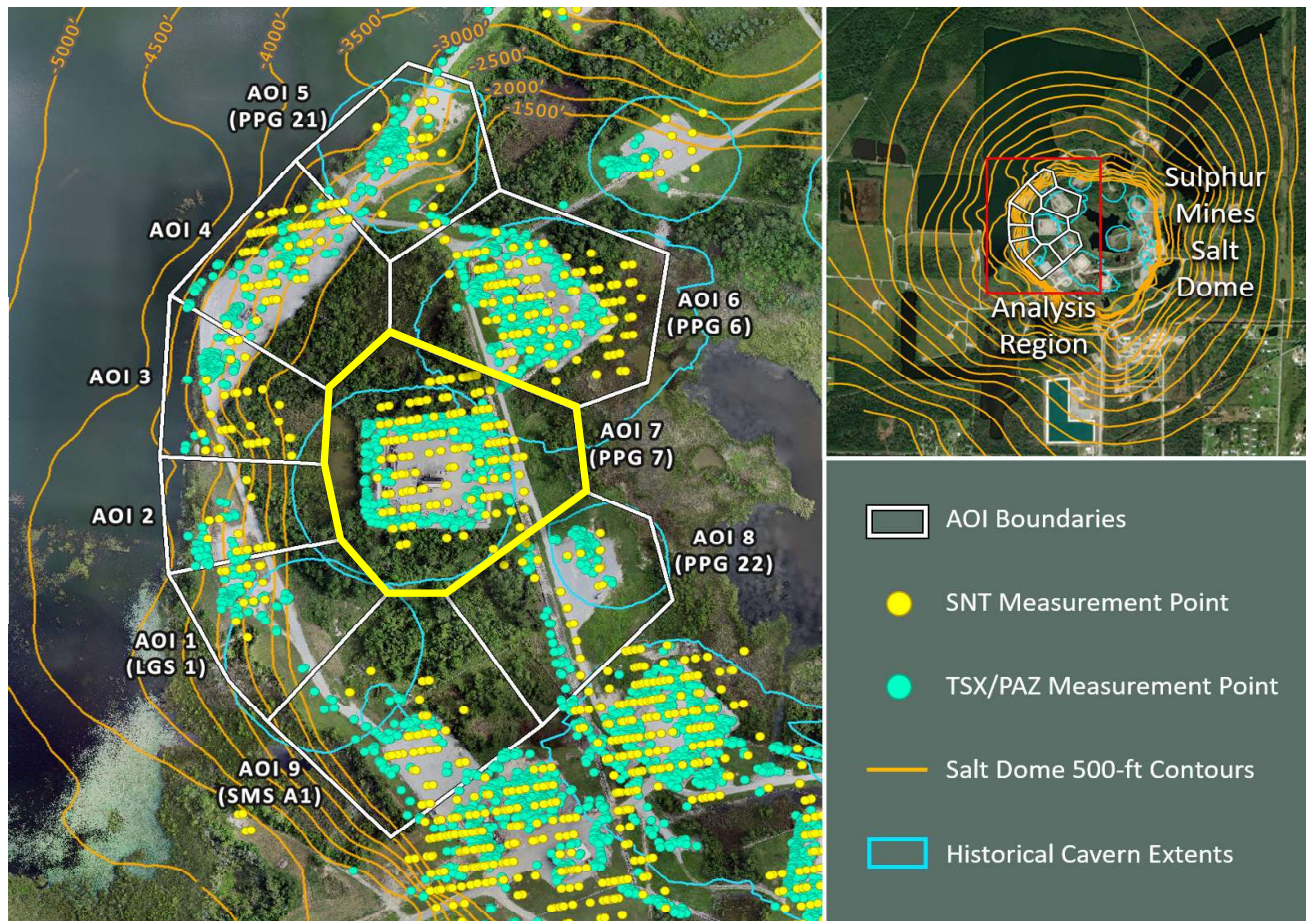
■ Historical LOS Displacement Measurement

--- Historical Trend Line (Quadratic Regression)

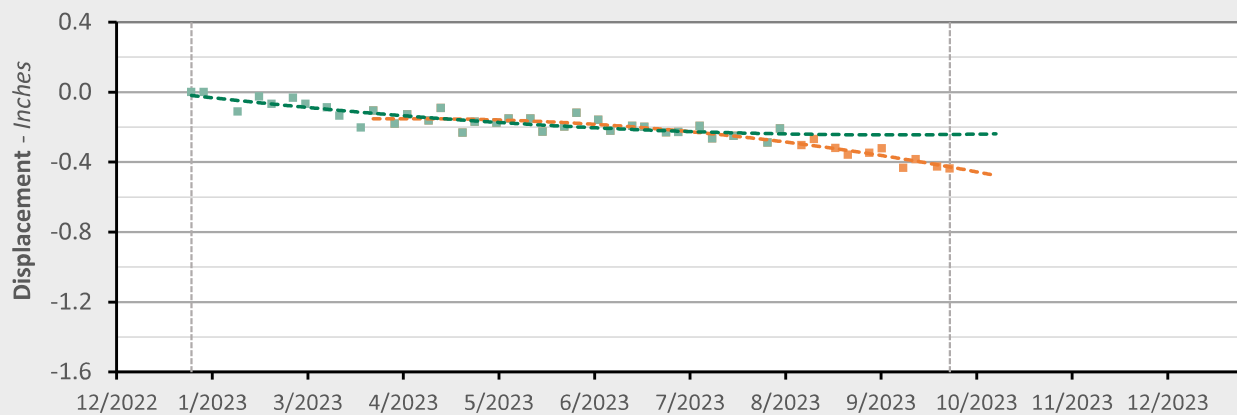
■ Recent LOS Displacement Measurement

--- Recent Trend Line (Quadratic Regression)

AOI 7 (PPG 7) - Location Map



AOI 7 (PPG 7) - Displacement Time Series

TSX/PAZ (9/27/2023) Point Count: **374**

	As of 8/3/23	3/24/2023 - 9/27/23	Trend Change
Velocity:	-0.11 in/yr	-1.15 in/yr	-1.04 in/yr
Acceleration:	+1.17 in/yr ²	-2.40 in/yr ²	-3.57 in/yr ²

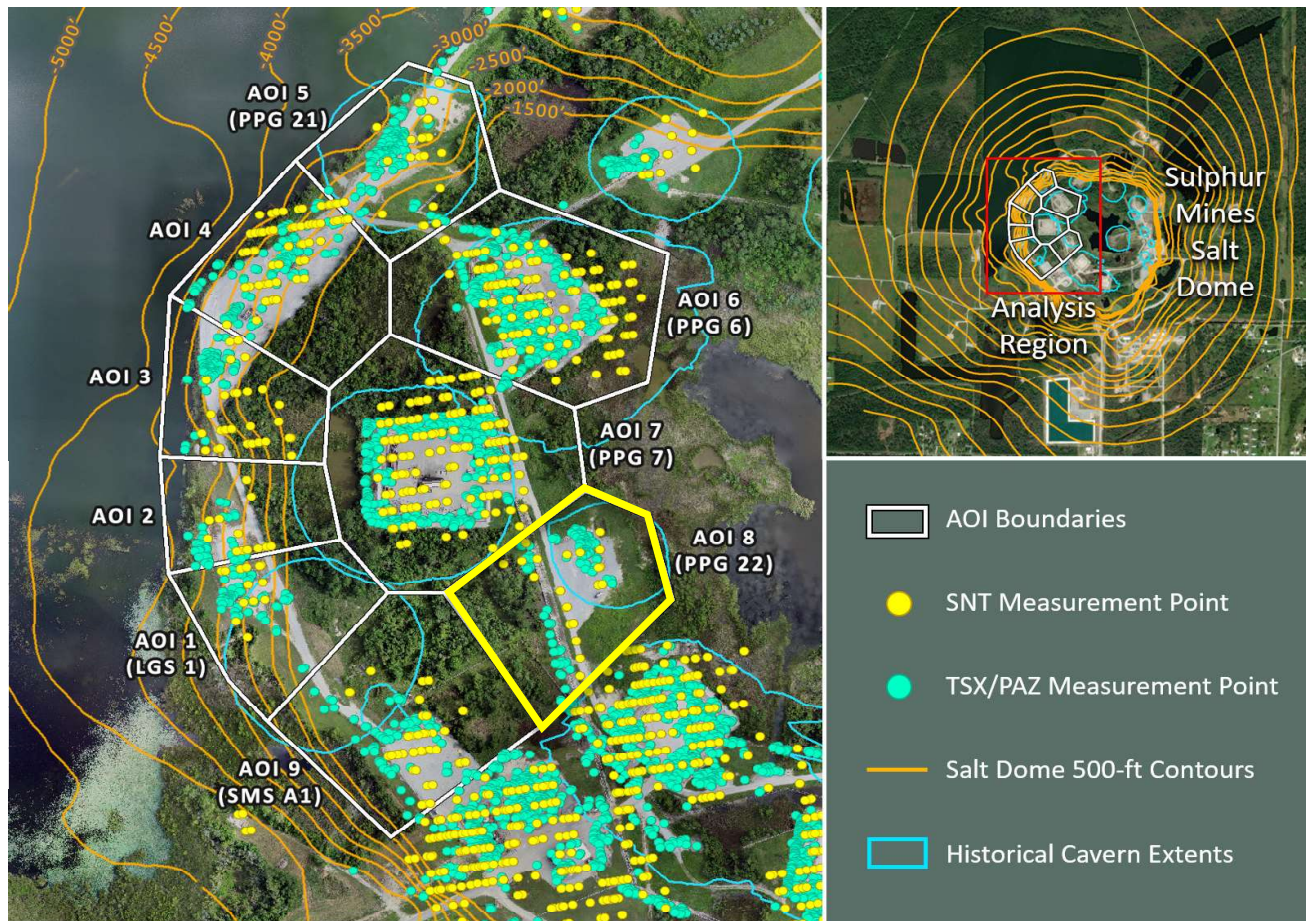
■ Historical LOS Displacement Measurement

--- Historical Trend Line (Quadratic Regression)

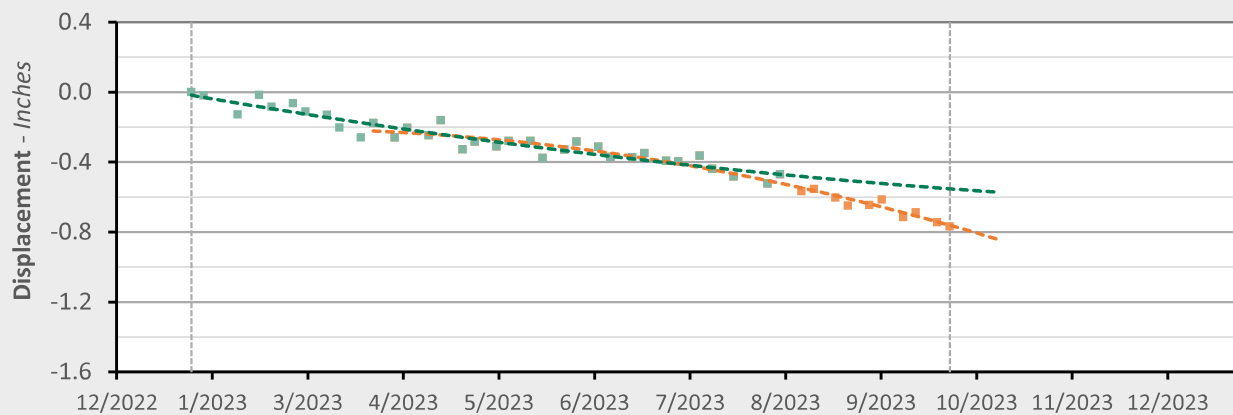
■ Recent LOS Displacement Measurement

--- Recent Trend Line (Quadratic Regression)

AOI 8 (PPG 22) - Location Map



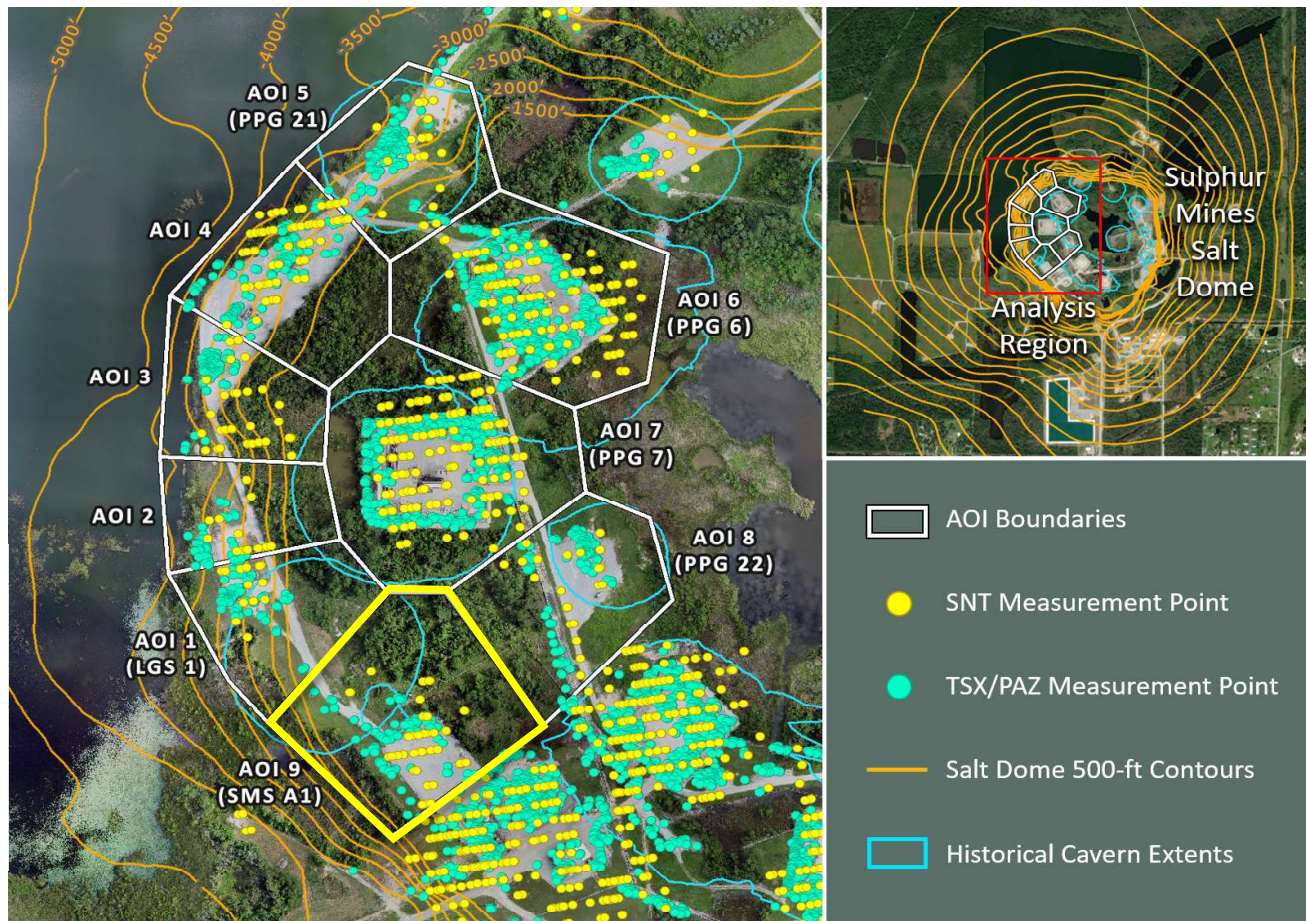
AOI 8 (PPG 22) - Displacement Time Series TSX/PAZ (9/27/2023) Point Count: 111



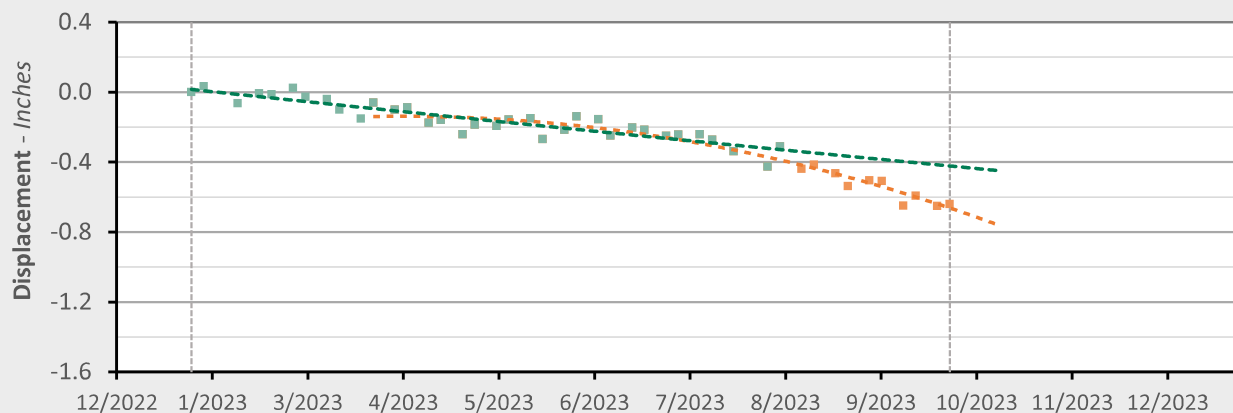
	As of 8/3/23	3/24/2023 - 9/27/23	Trend Change
Velocity:	-0.62 in/yr	-1.82 in/yr	-1.20 in/yr
Acceleration:	+0.94 in/yr ²	-3.01 in/yr ²	-3.95 in/yr ²

■ Historical LOS Displacement Measurement
 --- Historical Trend Line (Quadratic Regression)
 ■ Recent LOS Displacement Measurement
 --- Recent Trend Line (Quadratic Regression)

AOI 9 (PPG A1) - Location Map



AOI 9 (SMS A1) - Displacement Time Series TSX/PAZ (9/27/2023) Point Count: 85



	As of 8/3/23	3/24/2023 - 9/27/23	Trend Change
Velocity:	-0.63 in/yr	-2.15 in/yr	-1.53 in/yr
Acceleration:	+0.11 in/yr ²	-4.43 in/yr ²	-4.54 in/yr ²

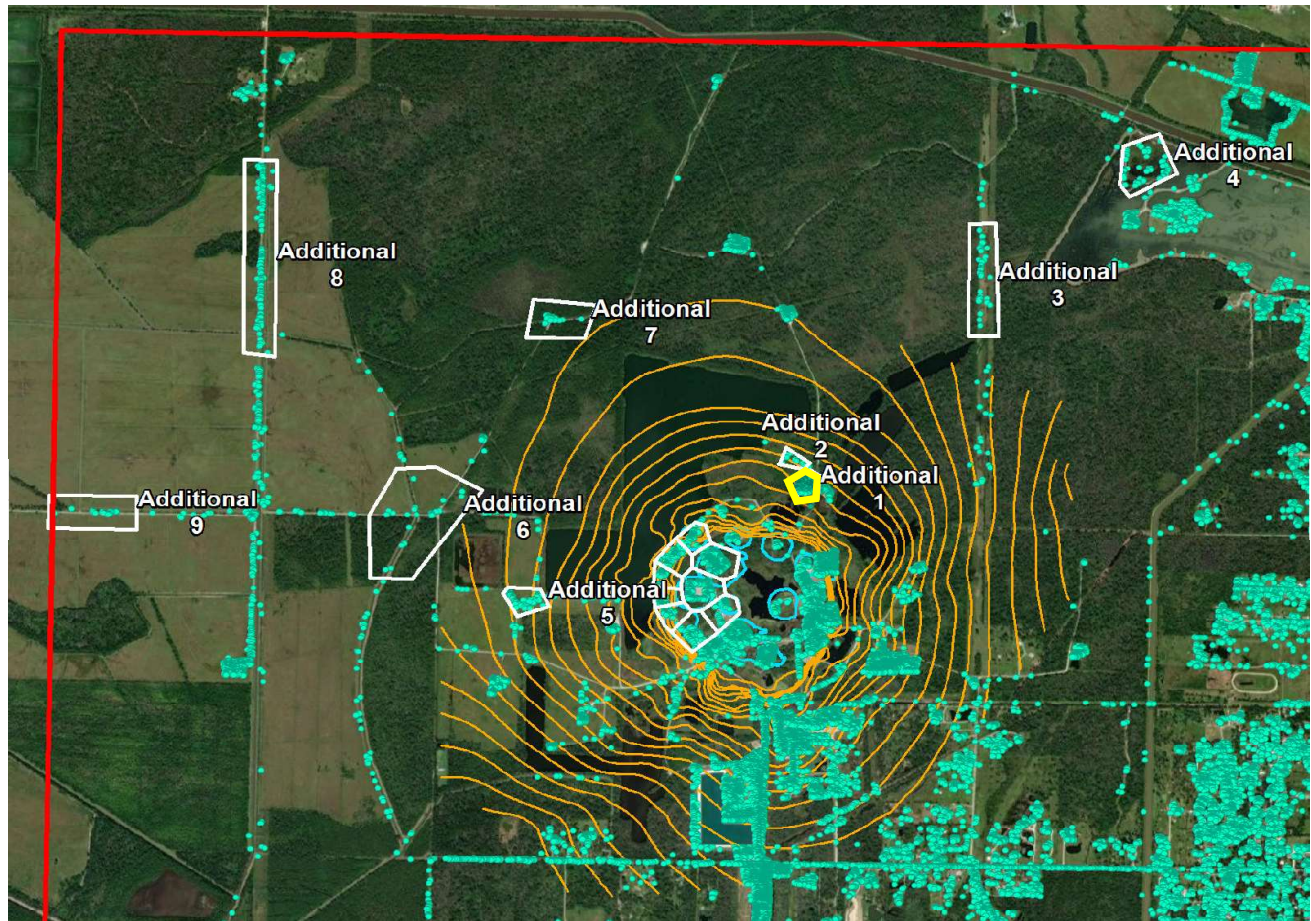
■ Historical LOS Displacement Measurement

--- Historical Trend Line (Quadratic Regression)

■ Recent LOS Displacement Measurement

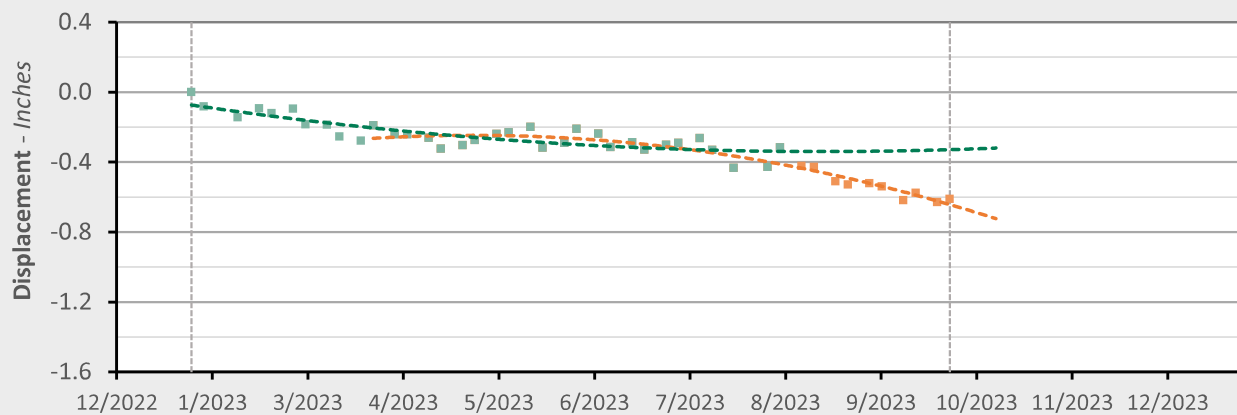
--- Recent Trend Line (Quadratic Regression)

Additional 1 - Location Map



Additional 1 - Displacement Time Series

TSX/PAZ (9/27/2023) Point Count: 135



	As of 8/3/23	3/24/2023 - 9/27/23	Trend Change
Velocity:	-0.06 in/yr	-1.87 in/yr	-1.81 in/yr
Acceleration:	+1.69 in/yr ²	-4.42 in/yr ²	-6.11 in/yr ²

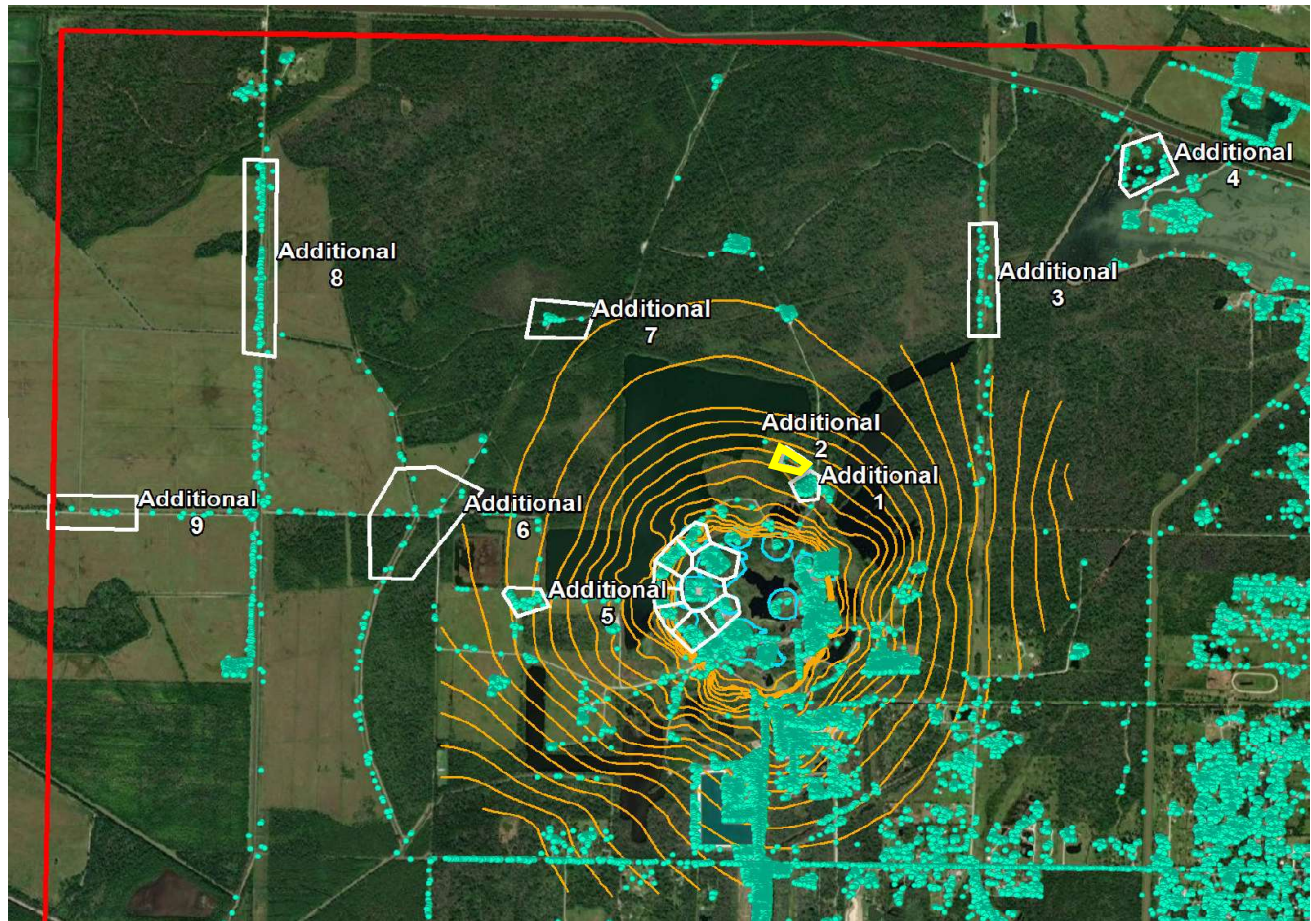
■ Historical LOS Displacement Measurement

--- Historical Trend Line (Quadratic Regression)

■ Recent LOS Displacement Measurement

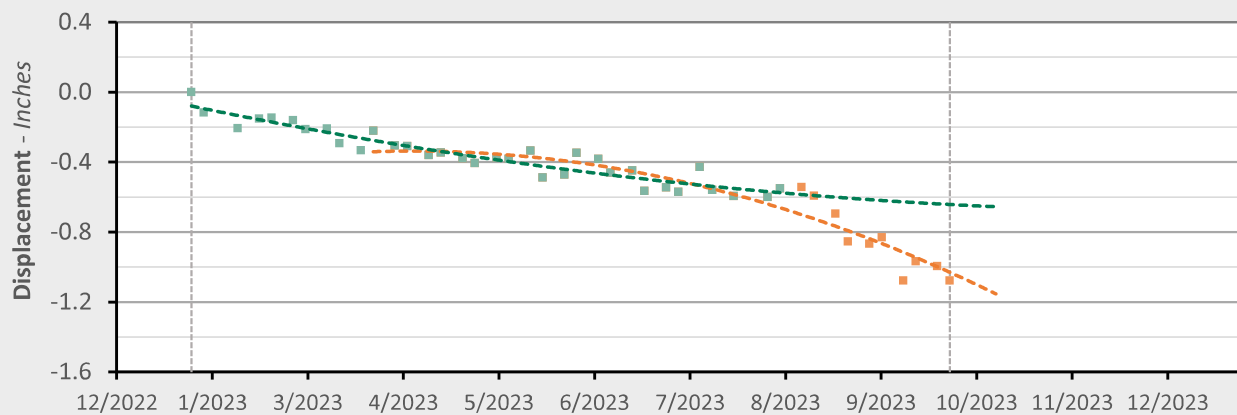
--- Recent Trend Line (Quadratic Regression)

Additional 2 - Location Map



Additional 2 - Displacement Time Series

TSX/PAZ (9/27/2023) Point Count: 18



	As of 8/3/23	3/24/2023 - 9/27/23	Trend Change
Velocity:	-0.56 in/yr	-2.90 in/yr	-2.34 in/yr
Acceleration:	+1.48 in/yr ²	-6.08 in/yr ²	-7.56 in/yr ²

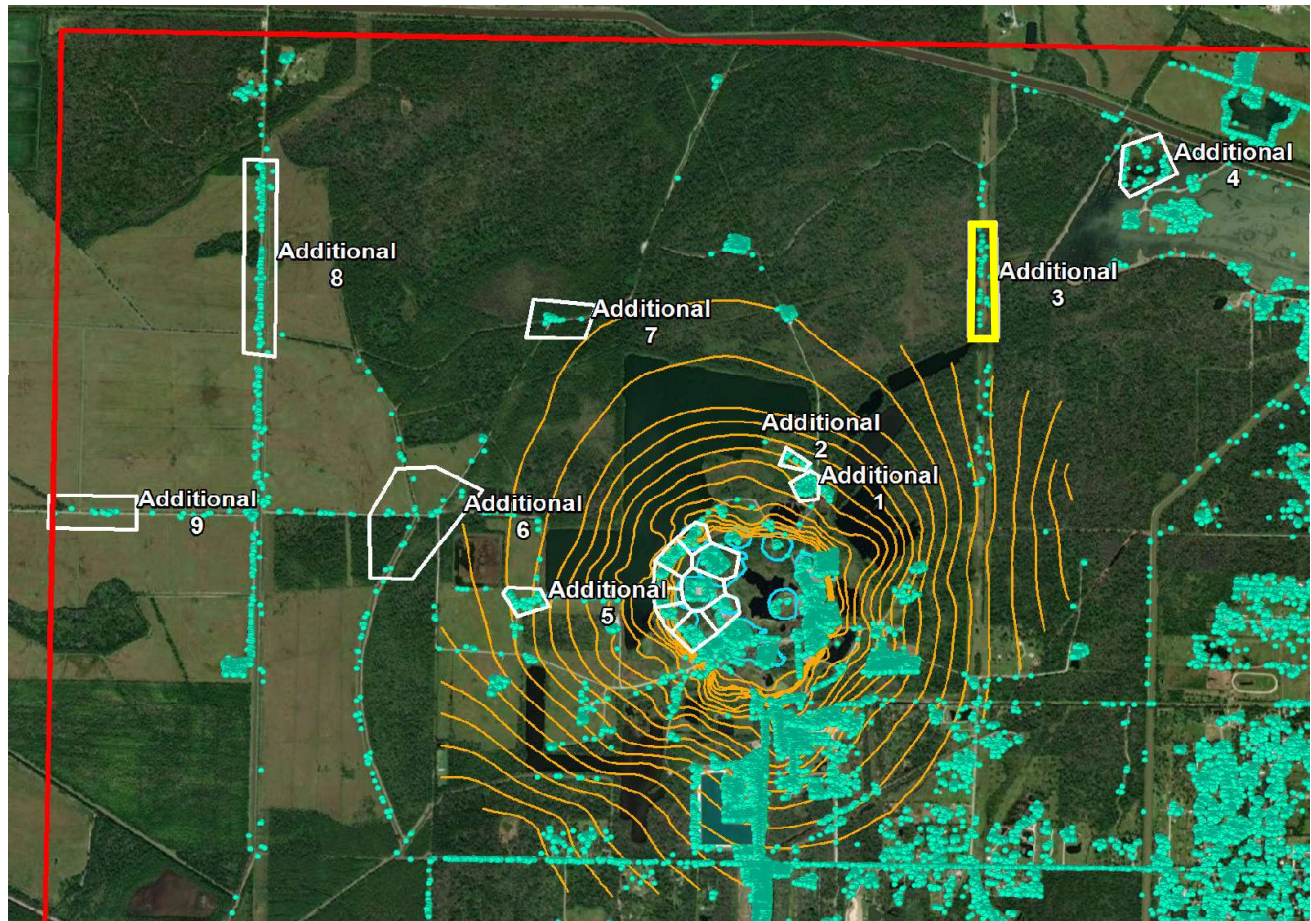
■ Historical LOS Displacement Measurement

--- Historical Trend Line (Quadratic Regression)

■ Recent LOS Displacement Measurement

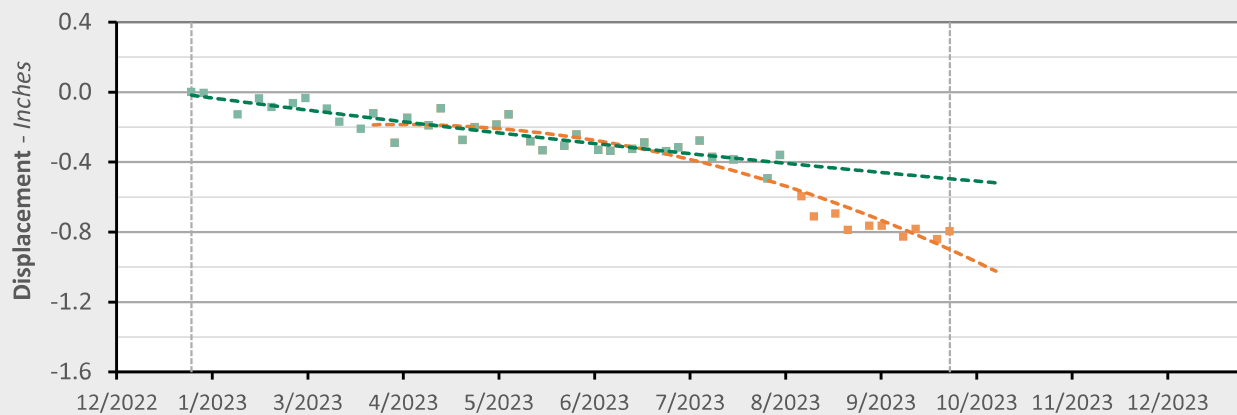
--- Recent Trend Line (Quadratic Regression)

Additional 3 - Location Map



Additional 3 - Displacement Time Series

TSX/PAZ (9/27/2023) Point Count: 40



	As of 8/3/23	3/24/2023 - 9/27/23	Trend Change
Velocity:	-0.63 in/yr	-2.92 in/yr	-2.28 in/yr
Acceleration:	+0.39 in/yr ²	-5.95 in/yr ²	-6.35 in/yr ²

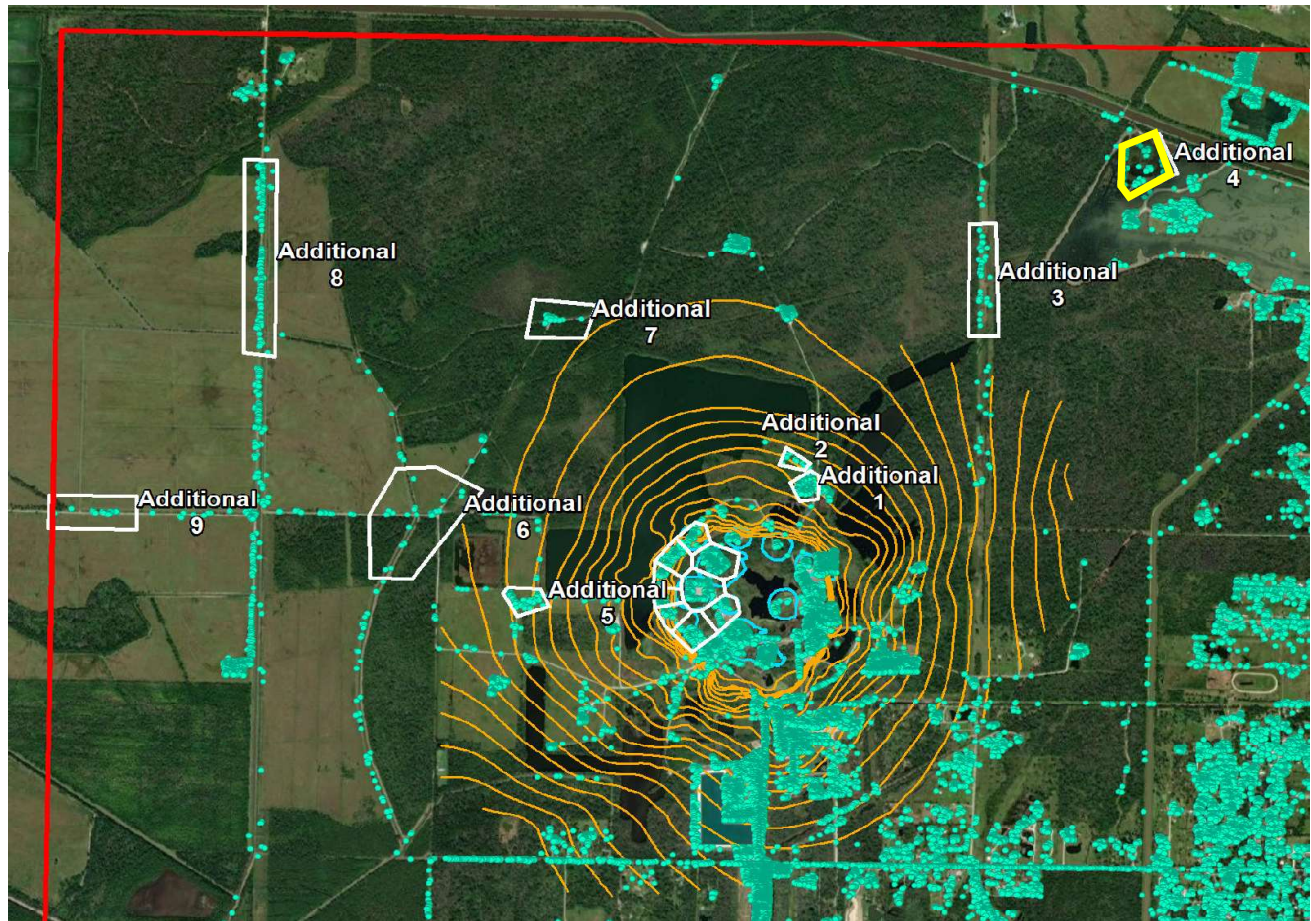
■ Historical LOS Displacement Measurement

--- Historical Trend Line (Quadratic Regression)

■ Recent LOS Displacement Measurement

--- Recent Trend Line (Quadratic Regression)

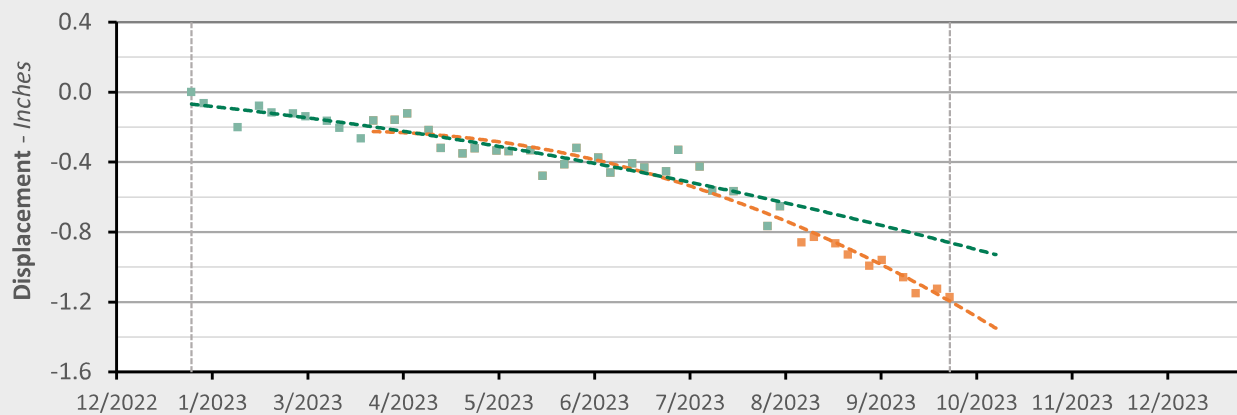
Additional 4 - Location Map



Additional 4 - Displacement Time Series

TSX/PAZ (9/27/2023) Point Count:

71



	As of 8/3/23	3/24/2023 - 9/27/23	Trend Change
Velocity:	-1.44 in/yr	-3.64 in/yr	-2.20 in/yr
Acceleration:	-1.45 in/yr ²	-6.83 in/yr ²	-5.38 in/yr ²

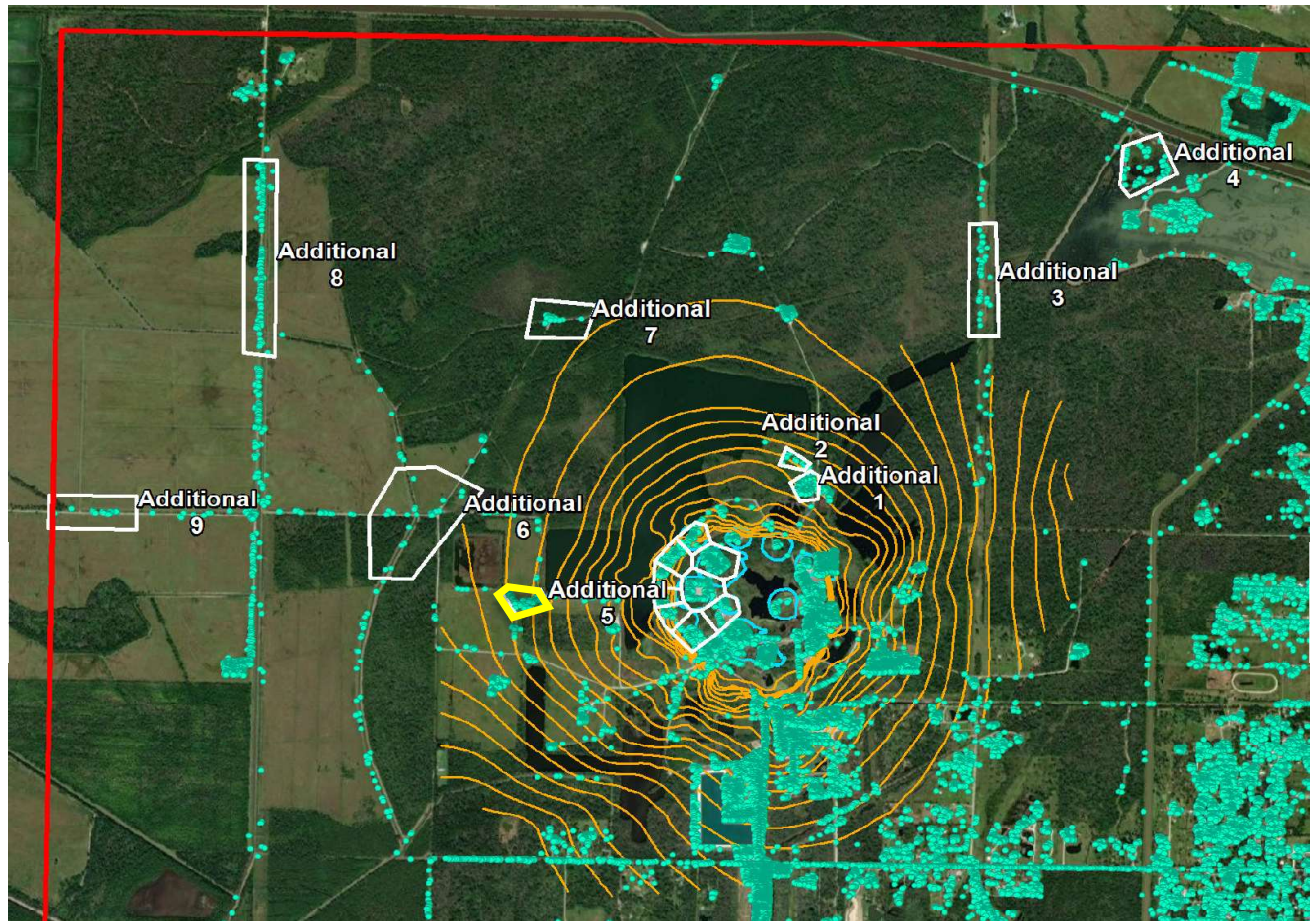
■ Historical LOS Displacement Measurement

--- Historical Trend Line (Quadratic Regression)

■ Recent LOS Displacement Measurement

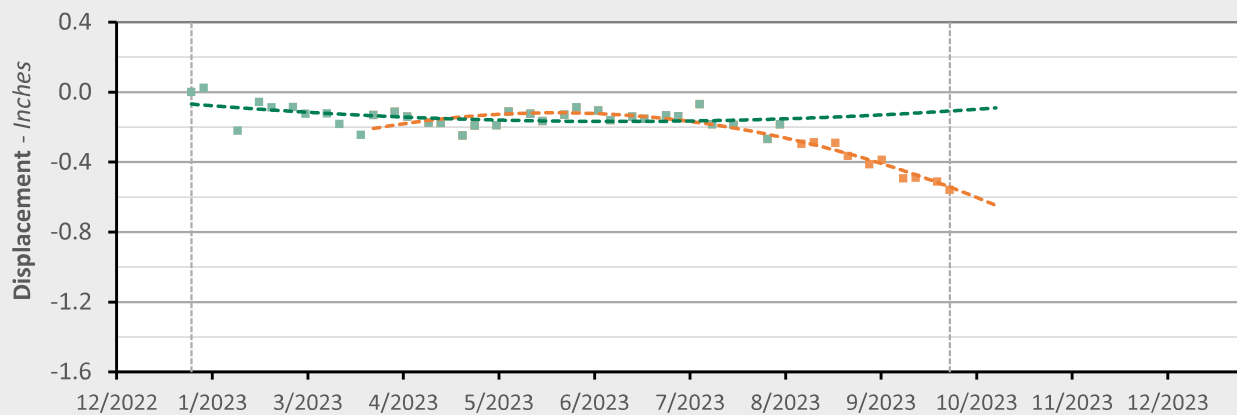
--- Recent Trend Line (Quadratic Regression)

Additional 5 - Location Map



Additional 5 - Displacement Time Series

TSX/PAZ (9/27/2023) Point Count: 76



	As of 8/3/23	3/24/2023 - 9/27/23	Trend Change
Velocity:	+0.20 in/yr	-2.42 in/yr	-2.62 in/yr
Acceleration:	+1.38 in/yr ²	-6.91 in/yr ²	-8.29 in/yr ²

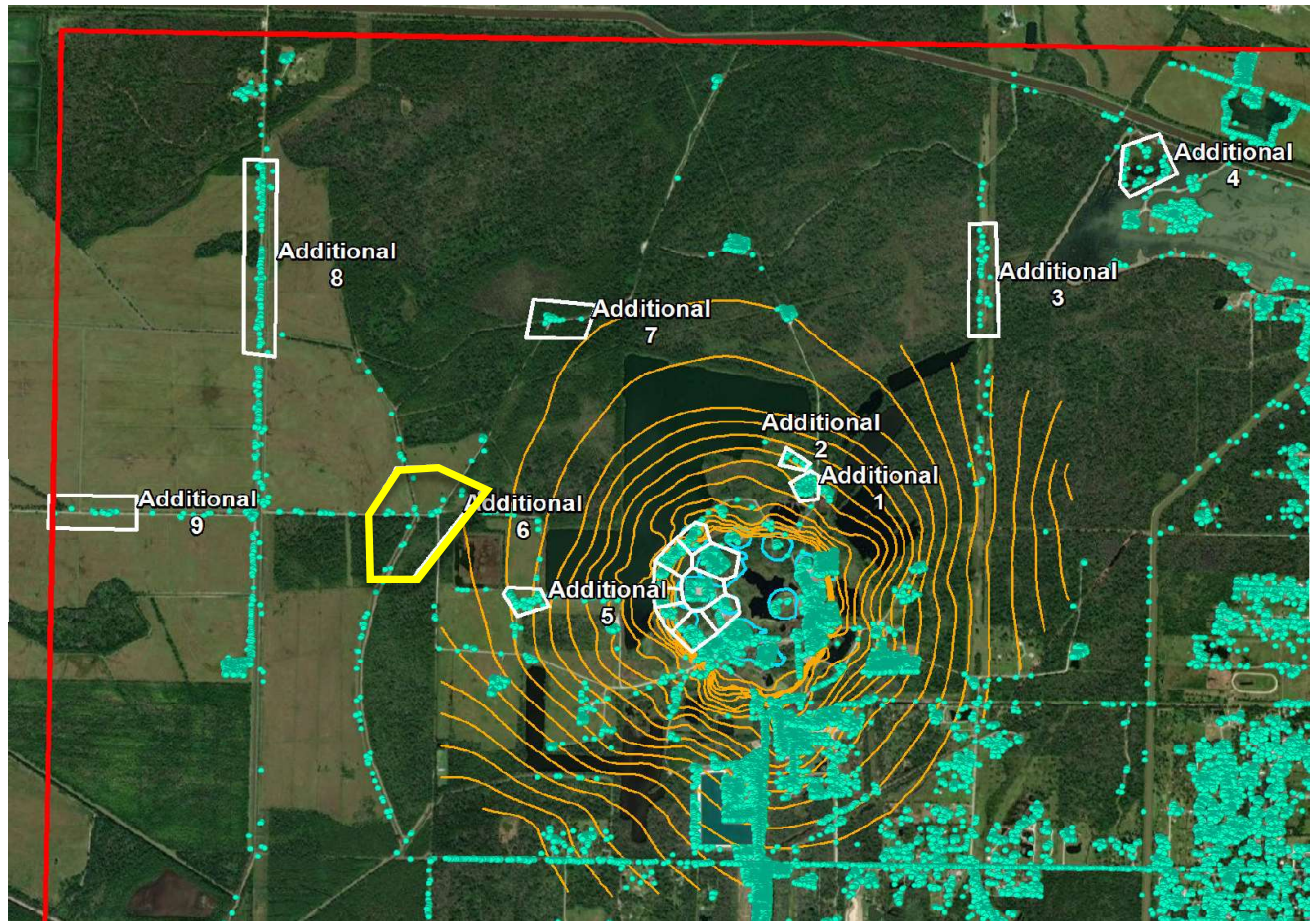
■ Historical LOS Displacement Measurement

--- Historical Trend Line (Quadratic Regression)

■ Recent LOS Displacement Measurement

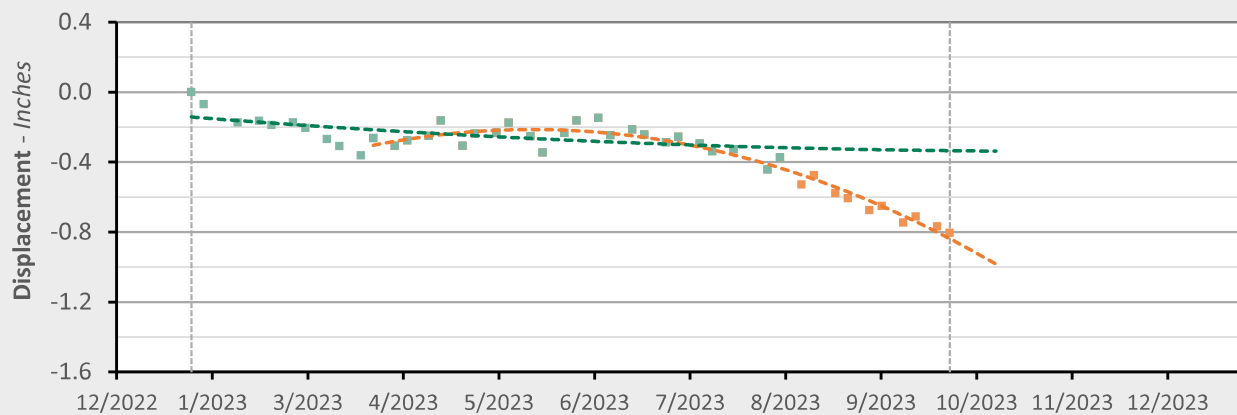
--- Recent Trend Line (Quadratic Regression)

Additional 6 - Location Map



Additional 6 - Displacement Time Series

TSX/PAZ (9/27/2023) Point Count: 24



	As of 8/3/23	3/24/2023 - 9/27/23	Trend Change
Velocity:	-0.17 in/yr	-3.36 in/yr	-3.20 in/yr
Acceleration:	+0.64 in/yr ²	-9.07 in/yr ²	-9.71 in/yr ²

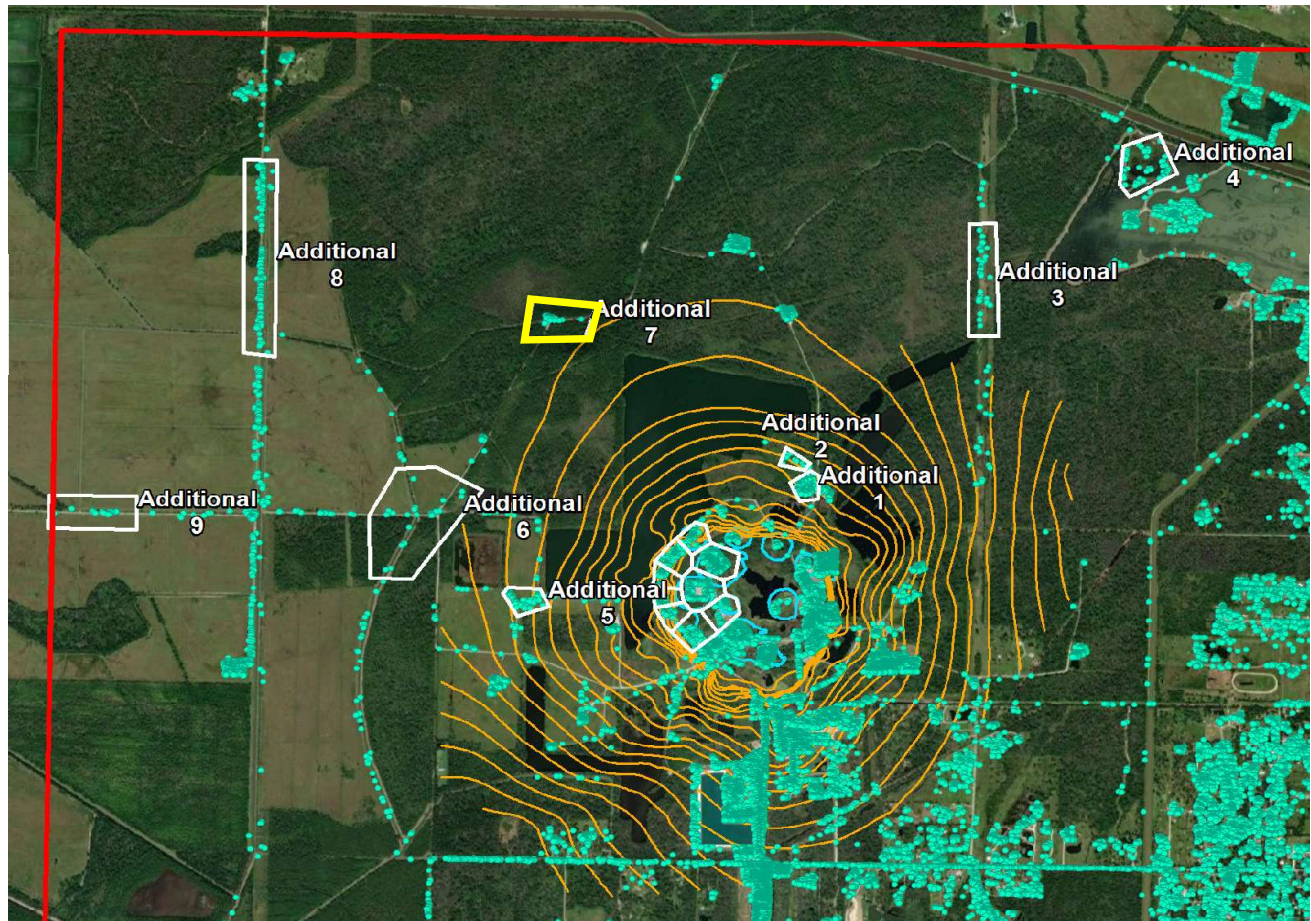
■ Historical LOS Displacement Measurement

--- Historical Trend Line (Quadratic Regression)

■ Recent LOS Displacement Measurement

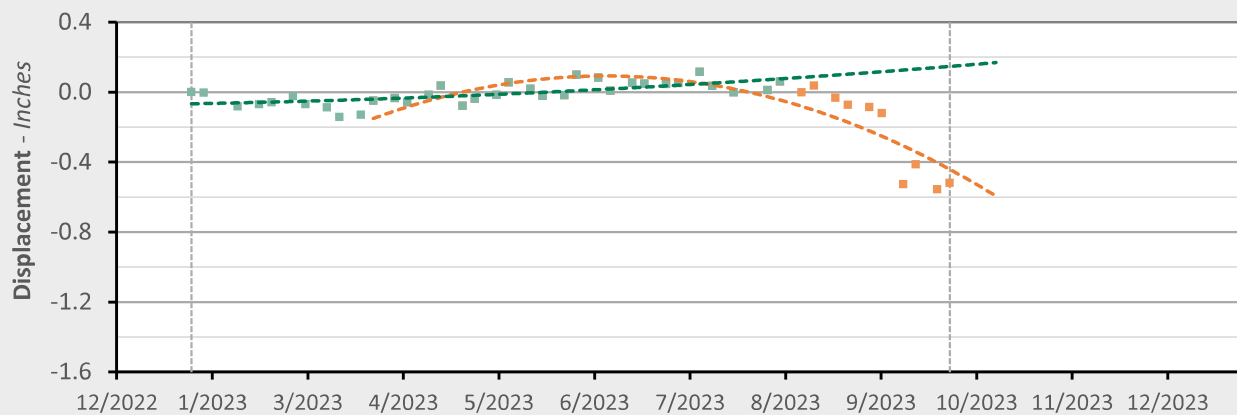
--- Recent Trend Line (Quadratic Regression)

Additional 7 - Location Map



Additional 7 - Displacement Time Series

TSX/PAZ (9/27/2023) Point Count: 26



	As of 8/3/23	3/24/2023 - 9/27/23	Trend Change
Velocity:	+0.43 in/yr	-3.49 in/yr	-3.92 in/yr
Acceleration:	+0.59 in/yr ²	-11.42 in/yr ²	-12.01 in/yr ²

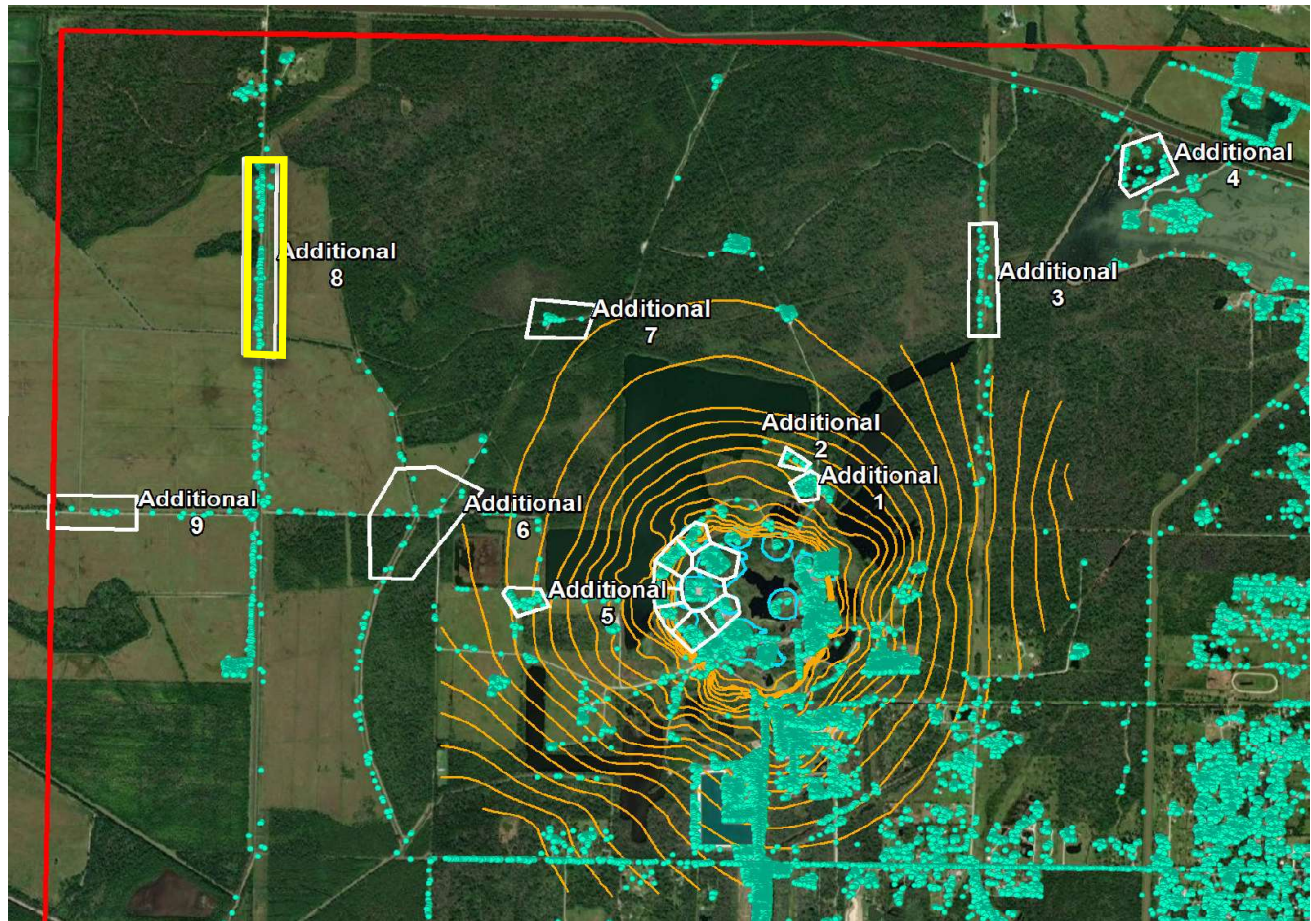
■ Historical LOS Displacement Measurement

--- Historical Trend Line (Quadratic Regression)

■ Recent LOS Displacement Measurement

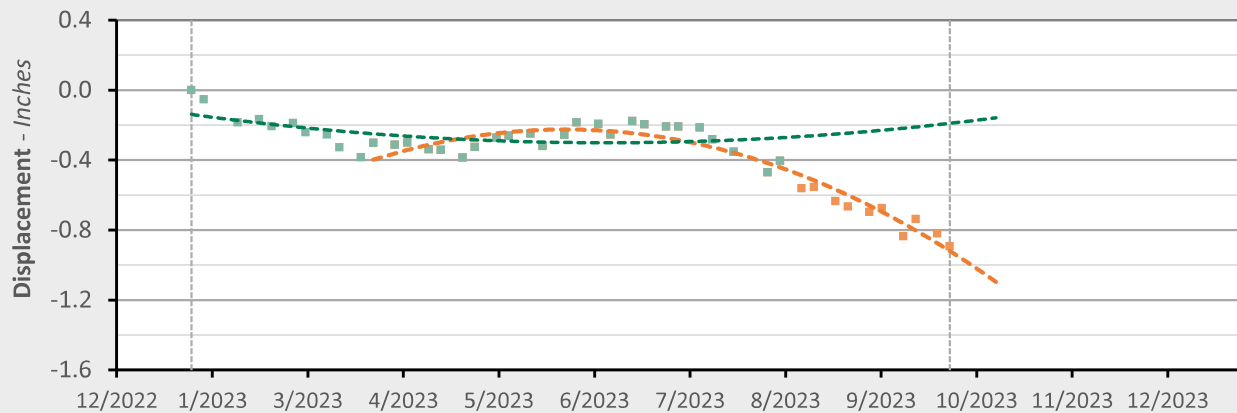
--- Recent Trend Line (Quadratic Regression)

Additional 8 - Location Map



Additional 8 - Displacement Time Series

TSX/PAZ (9/27/2023) Point Count: 203



	As of 8/3/23	3/24/2023 - 9/27/23	Trend Change
Velocity:	+0.37 in/yr	-4.07 in/yr	-4.43 in/yr
Acceleration:	+2.38 in/yr ²	-11.91 in/yr ²	-14.29 in/yr ²

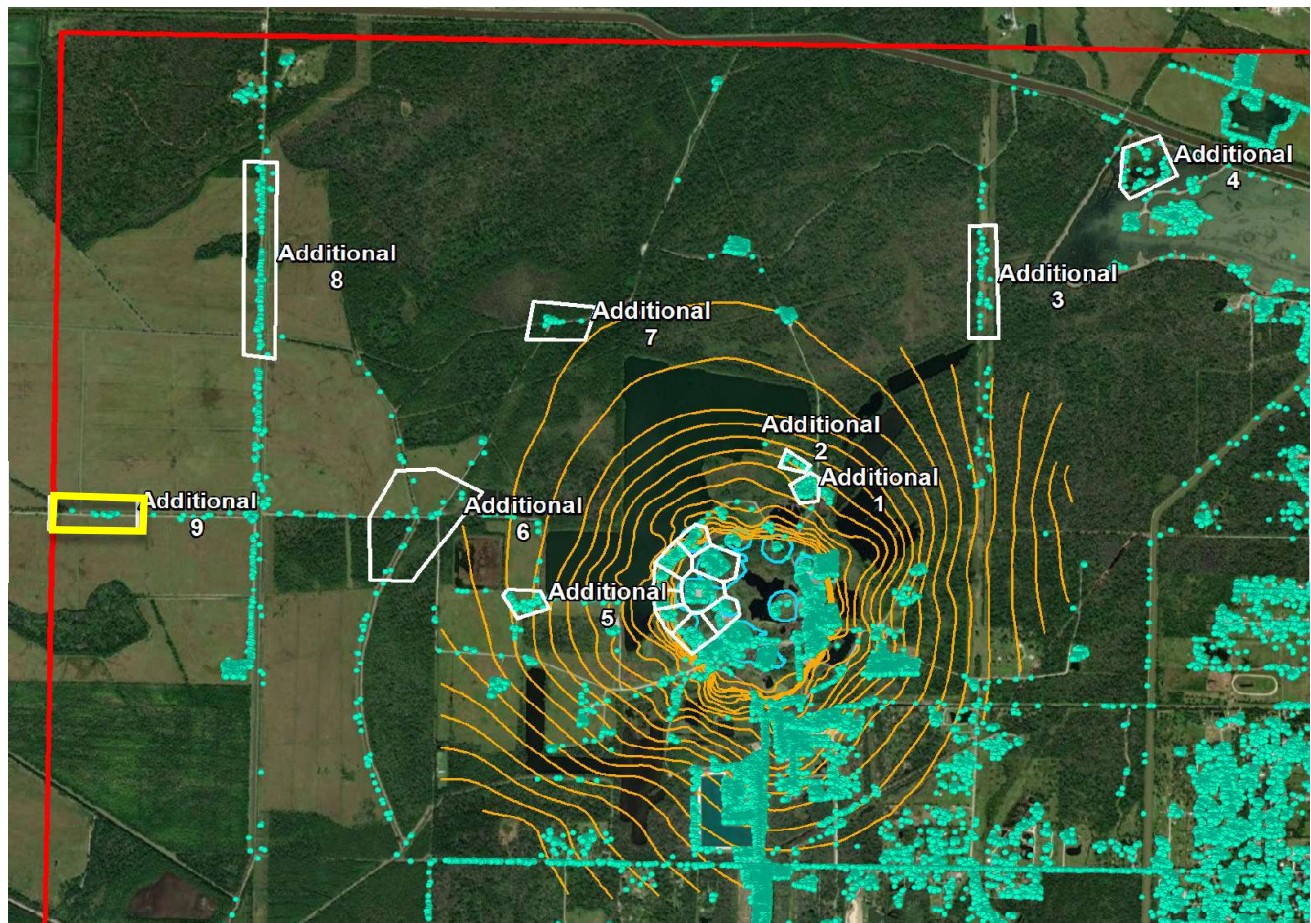
■ Historical LOS Displacement Measurement

--- Historical Trend Line (Quadratic Regression)

■ Recent LOS Displacement Measurement

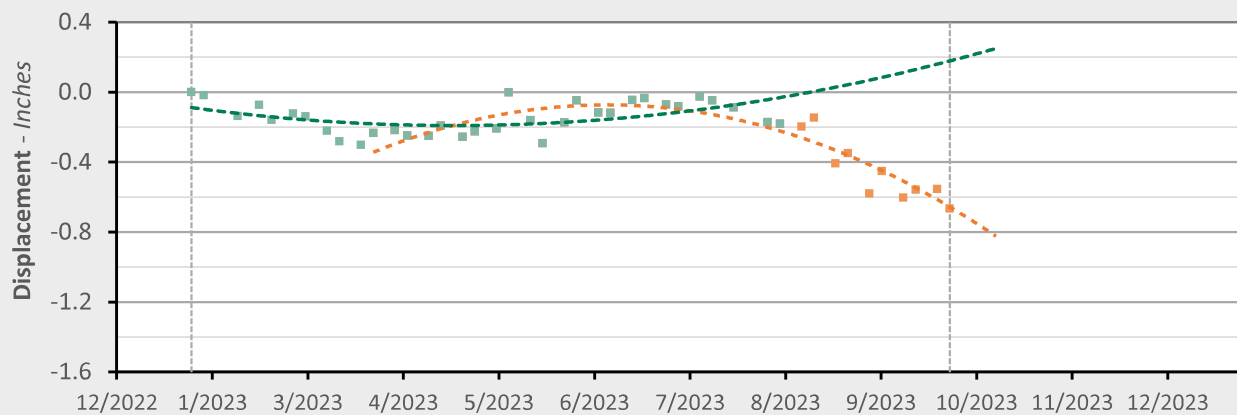
--- Recent Trend Line (Quadratic Regression)

Additional 9 - Location Map



Additional 9 - Displacement Time Series

TSX/PAZ (9/27/2023) Point Count: 21



	As of 8/3/23	3/24/2023 - 9/27/23	Trend Change
Velocity:	+1.10 in/yr	-3.83 in/yr	-4.93 in/yr
Acceleration:	+3.79 in/yr ²	-12.58 in/yr ²	-16.37 in/yr ²

■ Historical LOS Displacement Measurement

--- Historical Trend Line (Quadratic Regression)

■ Recent LOS Displacement Measurement

--- Recent Trend Line (Quadratic Regression)