

Westlake US 2
Received 11/23/2023

TSX/PAZ Satellite Update
InSAR Subsidence
November 17, 2023

Lonquist comment:

The TSX satellite from the TSX/PAZ constellation (4 & 7-day revisit) passed by Sulphur on Friday November 17. We received the dataset Sunday and verified that none of the datapoint areas around the dome and caverns near the western flank are showing deviation from their respective trends. The attached time series plots have been prepared for reference.

Submitted by: Nathaniel Byars (Lonquist)



TSX/PAZ Satellite Update

Continuous InSAR Monitoring of
Ground Displacement
Near Western Caverns and Dome Flank

Sulphur Mines Salt Dome

Prepared for:
Westlake Chemical

Prepared by:
Lonquist & Co., LLC
8591 United Plaza Blvd.
Suite 280
Baton Rouge, LA 70809



Date Signed: November 23, 2023
Austin, Texas

Nathaniel L. Byars, P.E.
Principal Engineer
Louisiana License No. 40697

Dataset

Satellite Source

TerraSAR-X - PAZ Constellation

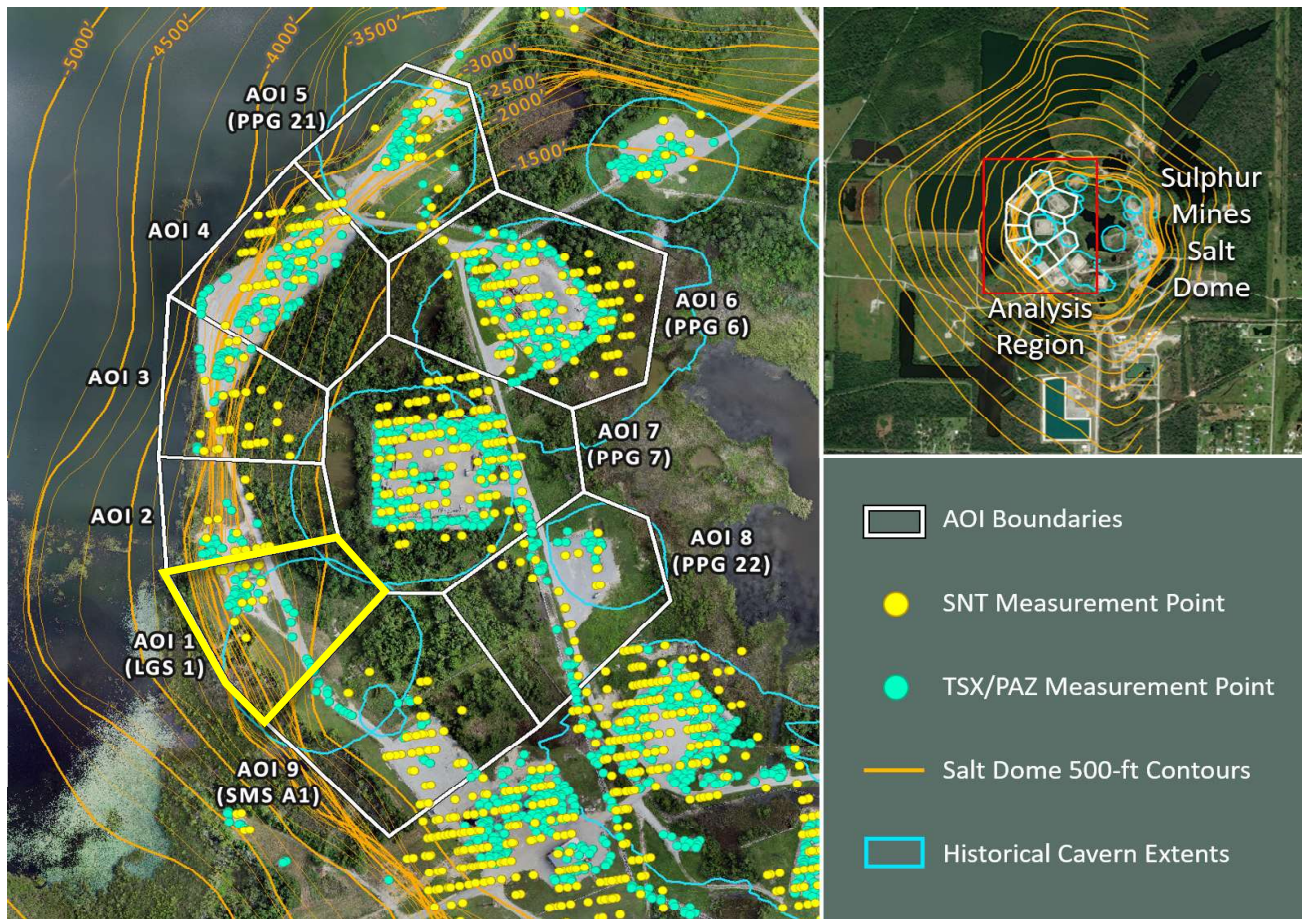
Most Recent Image Date

Friday, November 17, 2023

Analysis Report Date:

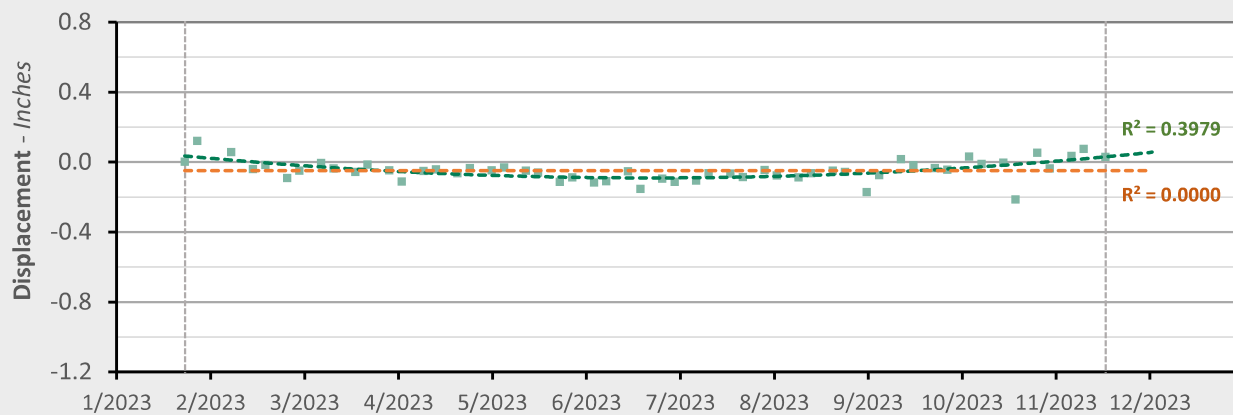
November 23, 2023

AOI 1 (LGS 1) - Location Map



AOI 1 (LGS 1) - Displacement Time Series

TSX/PAZ (11/17/2023) Point Count: 38



Nonlinear Trend

Linear Trend

Velocity: +0.60 in/yr

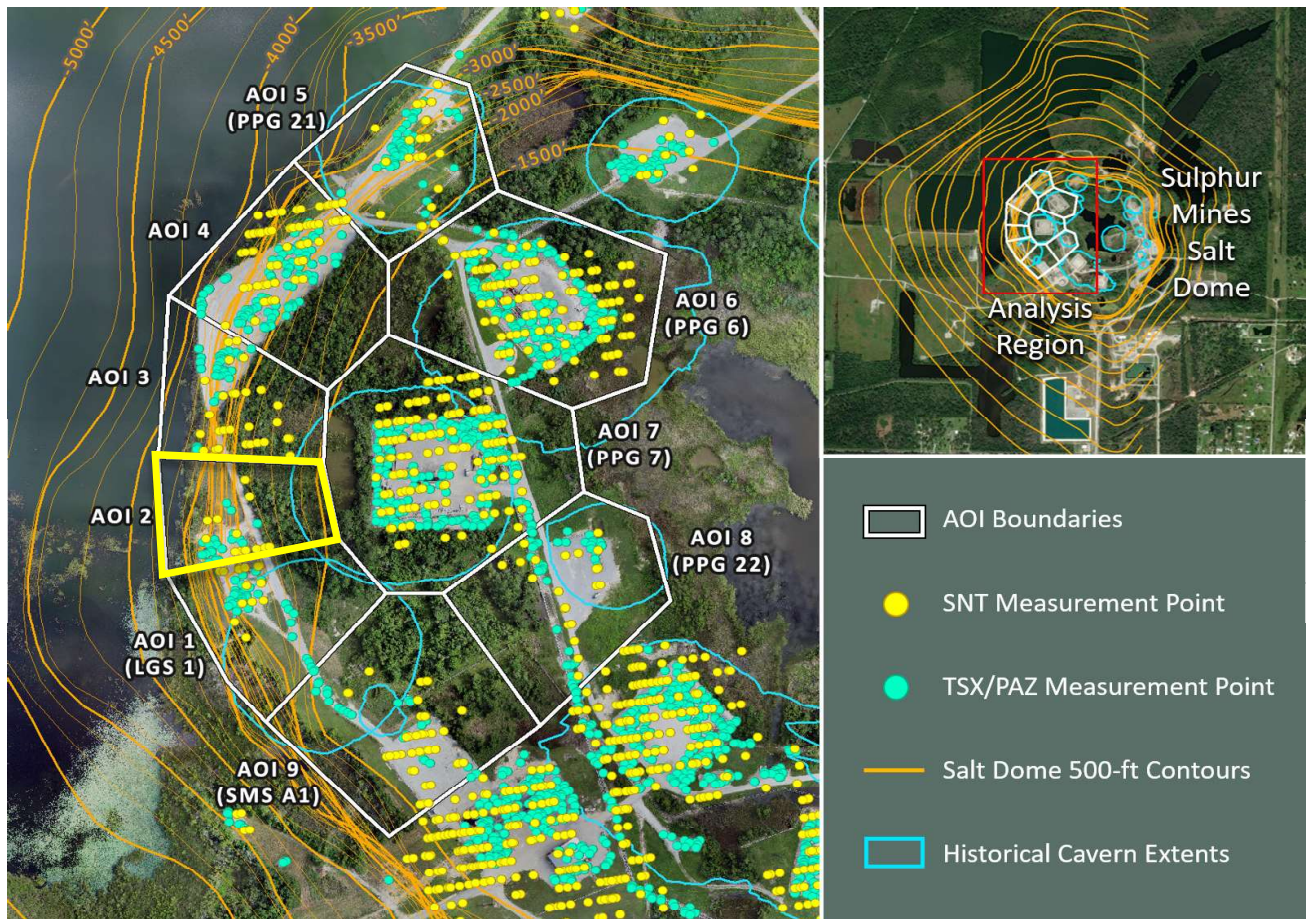
-0.00 in/yr

Acceleration: +1.49 in/yr²0.00 in/yr²

■ LOS Displacement Measurement

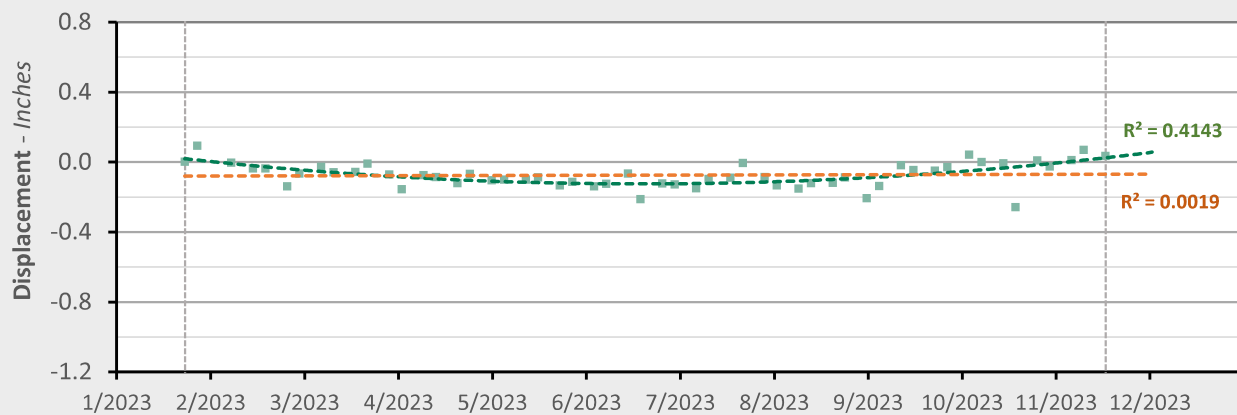
--- Nonlinear Trend Line
(Quadratic Regression)--- Linear Trend Line
(Linear Regression)

AOI 2 - Location Map



AOI 2 - Displacement Time Series

TSX/PAZ (11/17/2023) Point Count: 23



Nonlinear Trend

Linear Trend

Velocity: +0.73 in/yr

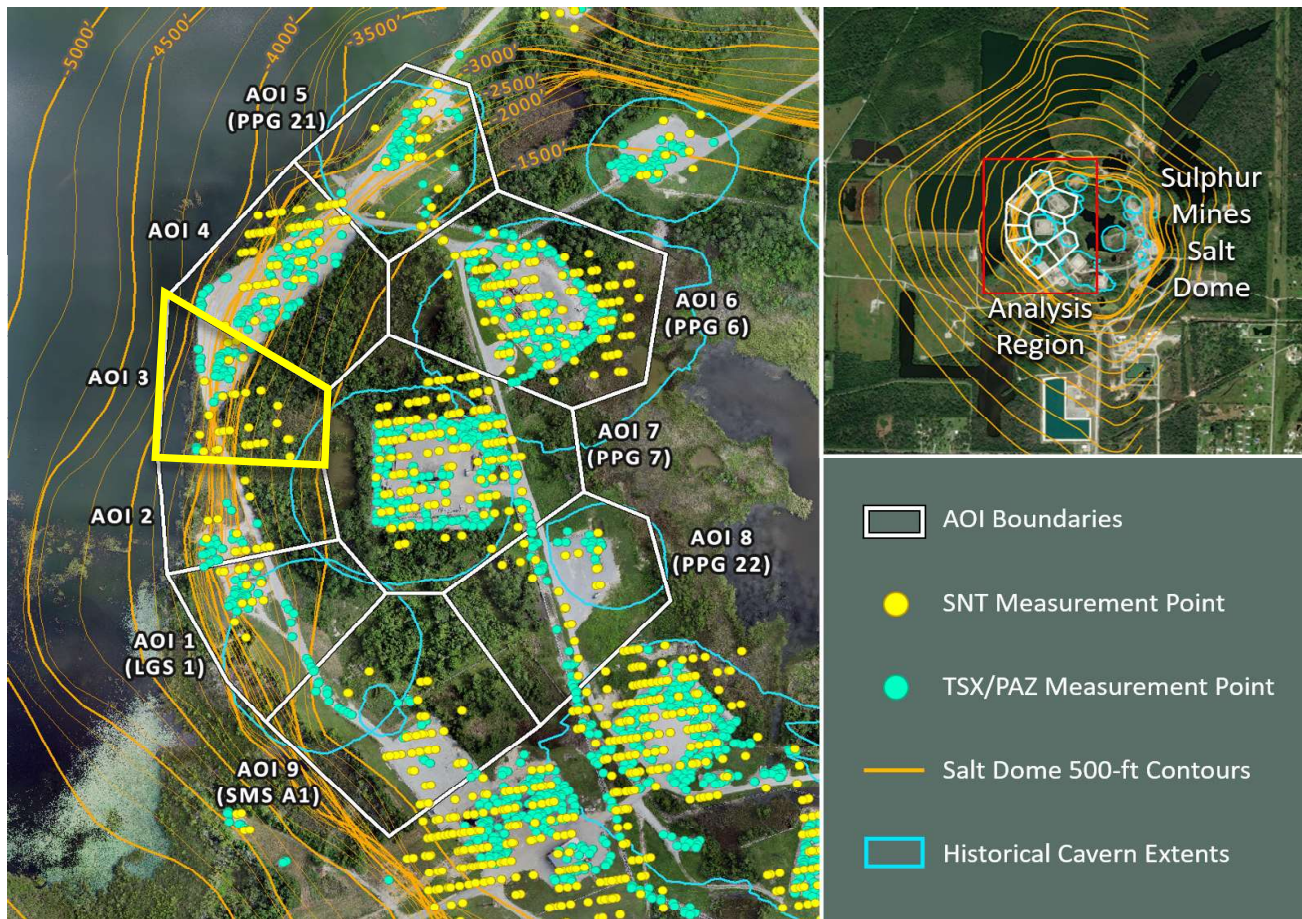
+0.01 in/yr

Acceleration: +1.77 in/yr²0.00 in/yr²

■ LOS Displacement Measurement

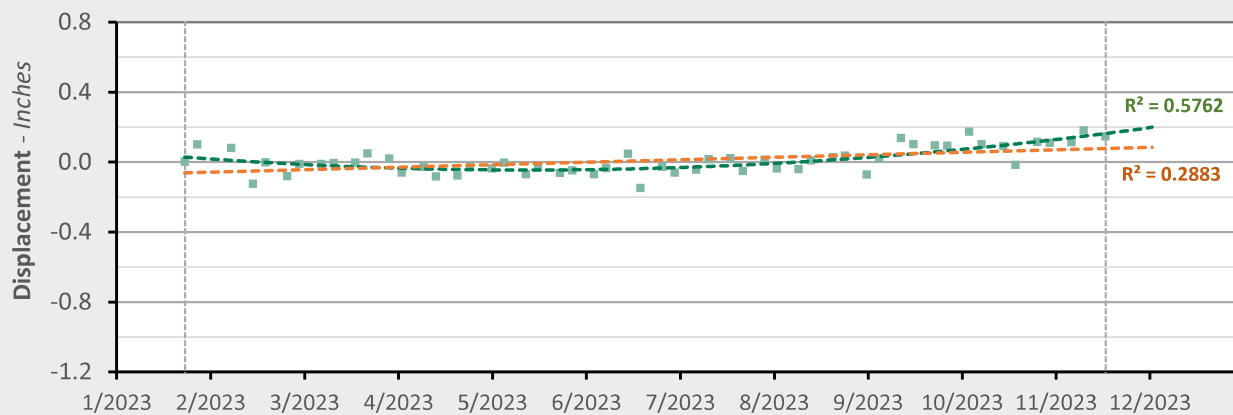
--- Nonlinear Trend Line
(Quadratic Regression)--- Linear Trend Line
(Linear Regression)

AOI 3 - Location Map



AOI 3 - Displacement Time Series

TSX/PAZ (11/17/2023) Point Count: 39



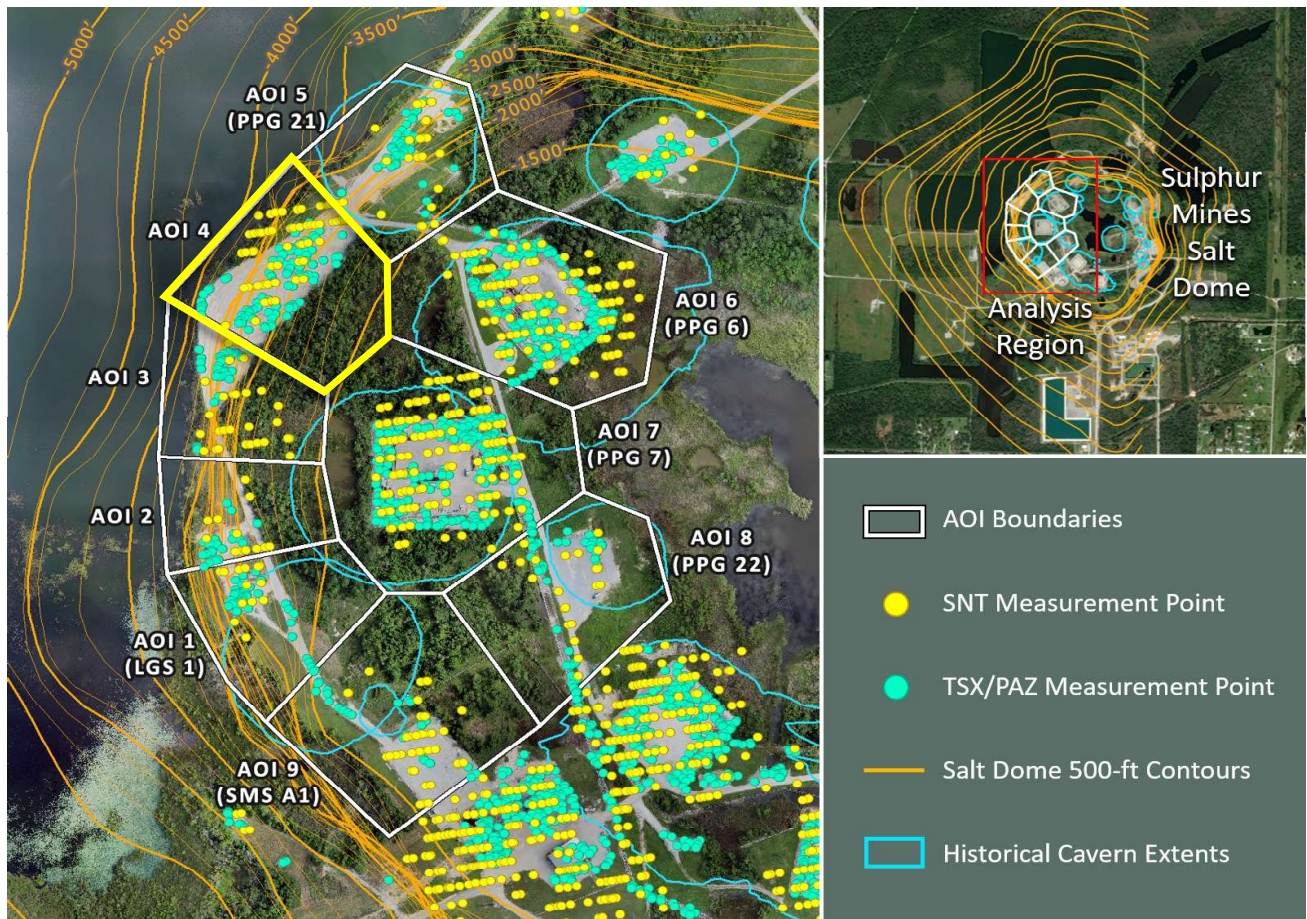
| | Nonlinear Trend | Linear Trend |
|---------------|--------------------------|-------------------------|
| Velocity: | +0.82 in/yr | +0.17 in/yr |
| Acceleration: | +1.61 in/yr ² | 0.00 in/yr ² |

■ LOS Displacement Measurement

--- Nonlinear Trend Line
(Quadratic Regression)

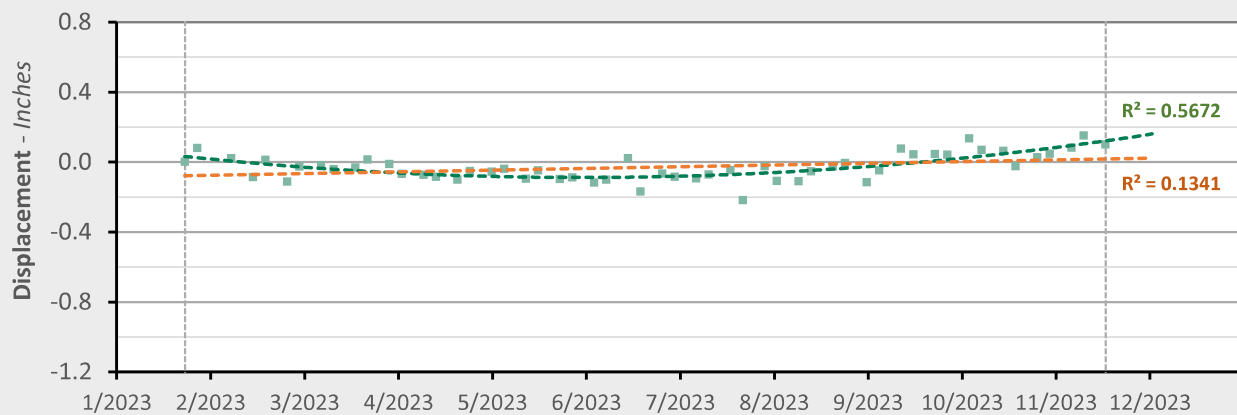
--- Linear Trend Line
(Linear Regression)

AOI 4 - Location Map



AOI 4 - Displacement Time Series

TSX/PAZ (11/17/2023) Point Count: 103

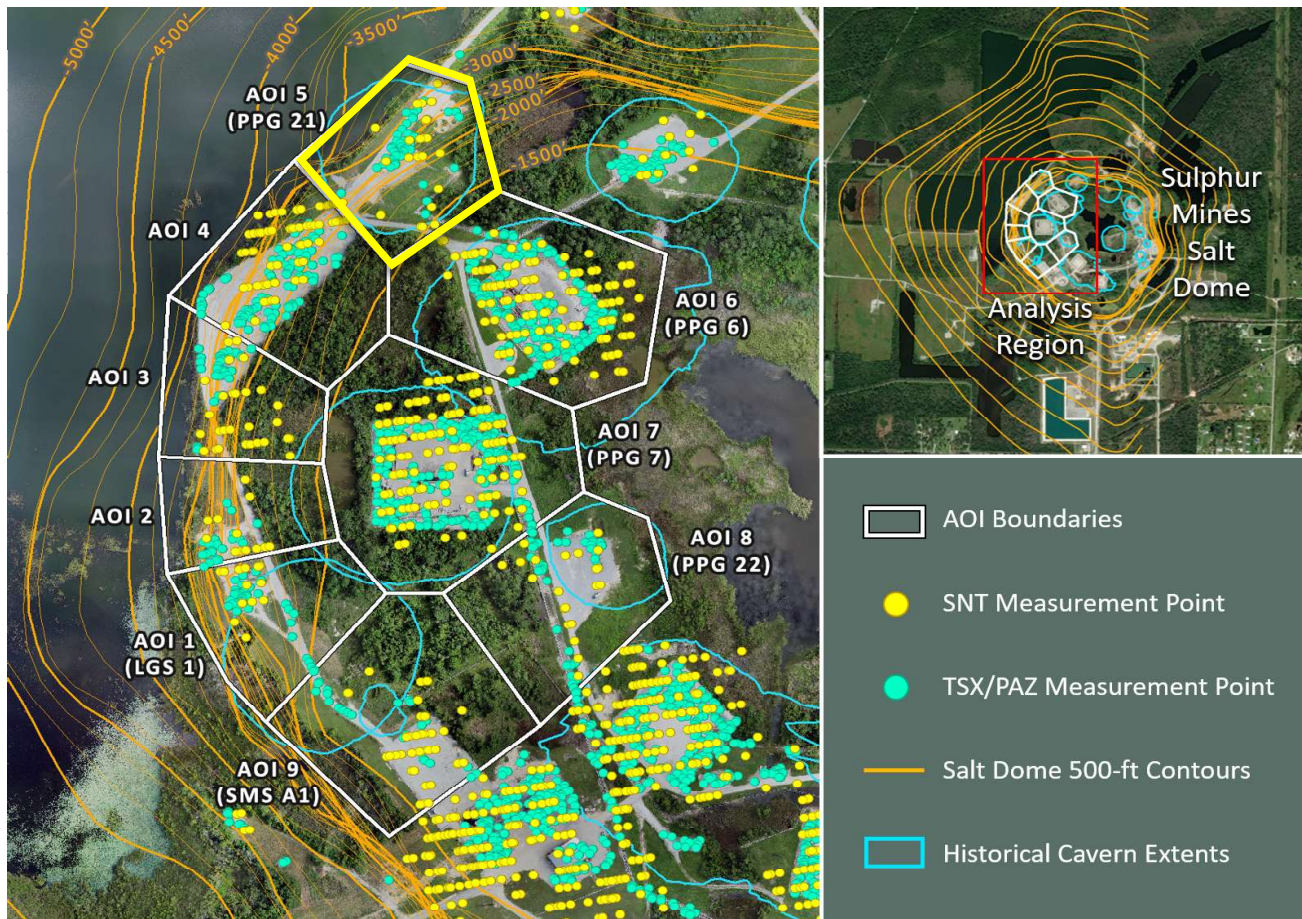


| | Nonlinear Trend | Linear Trend |
|---------------|--------------------------|-------------------------|
| Velocity: | +0.91 in/yr | +0.12 in/yr |
| Acceleration: | +1.96 in/yr ² | 0.00 in/yr ² |

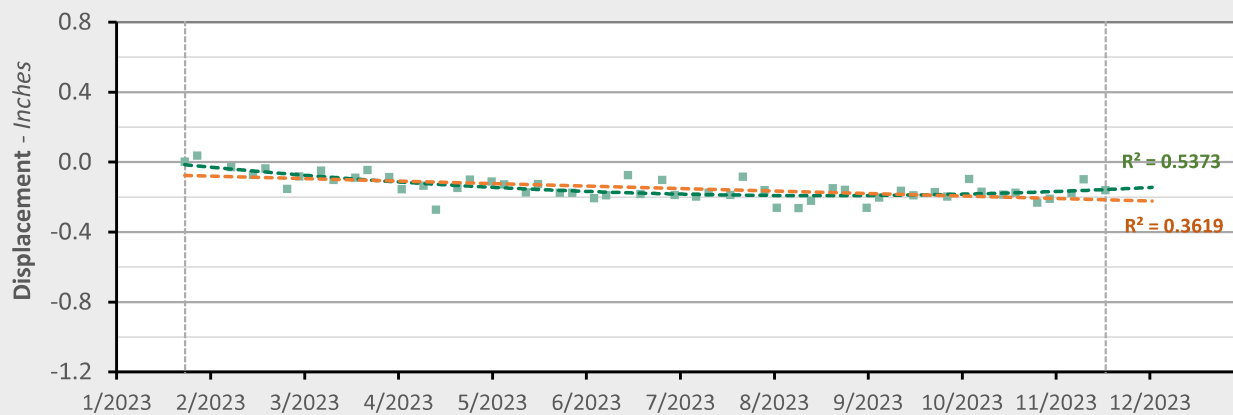
■ LOS Displacement Measurement

--- Nonlinear Trend Line
(Quadratic Regression)--- Linear Trend Line
(Linear Regression)

AOI 5 (PPG 21) - Location Map



AOI 5 (PPG 21) - Displacement Time Series TSX/PAZ (11/17/2023) Point Count: 46



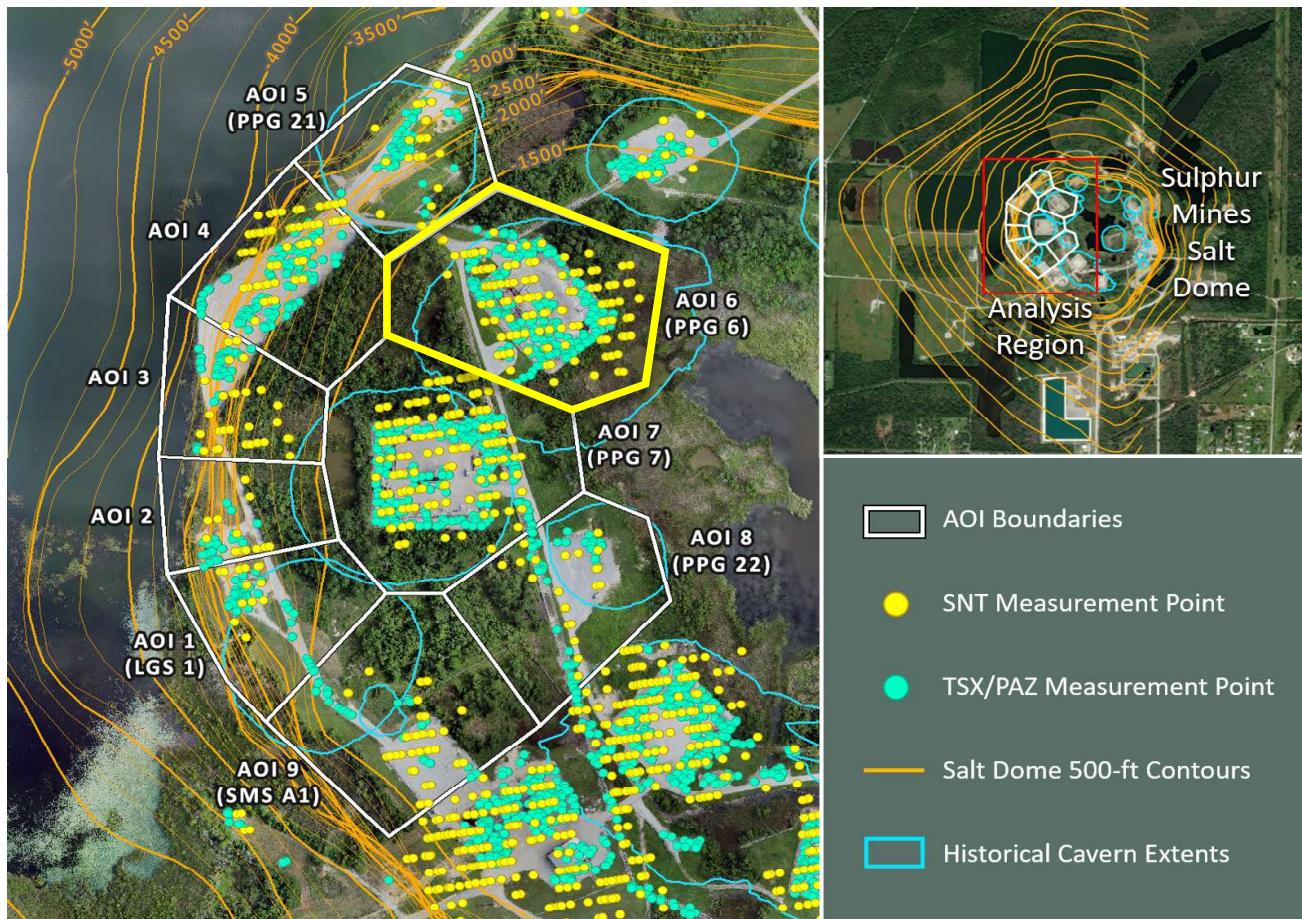
| | Nonlinear Trend | Linear Trend |
|---------------|--------------------------|-------------------------|
| Velocity: | +0.28 in/yr | -0.17 in/yr |
| Acceleration: | +1.12 in/yr ² | 0.00 in/yr ² |

■ LOS Displacement Measurement

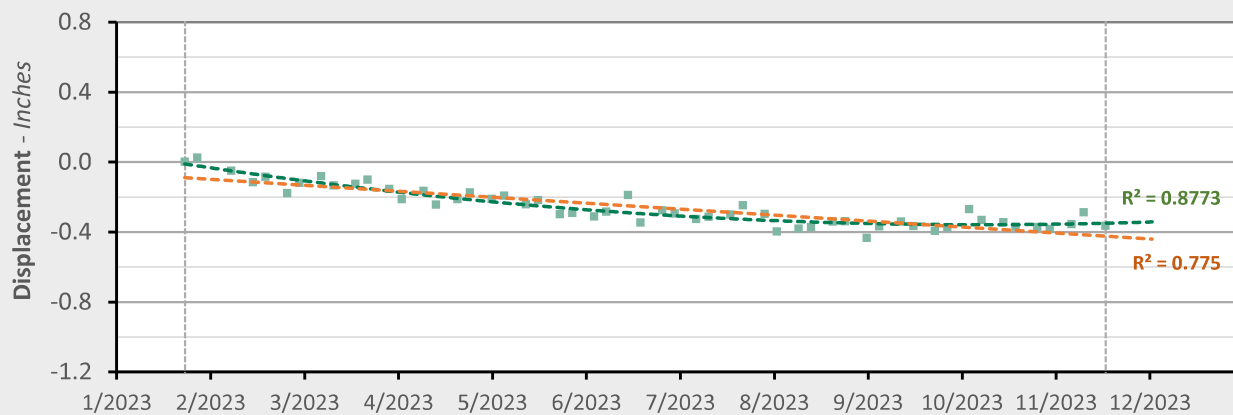
--- Nonlinear Trend Line
(Quadratic Regression)

--- Linear Trend Line
(Linear Regression)

AOI 6 (PPG 6) - Location Map



AOI 6 (PPG 6) - Displacement Time Series TSX/PAZ (11/17/2023) Point Count: 212



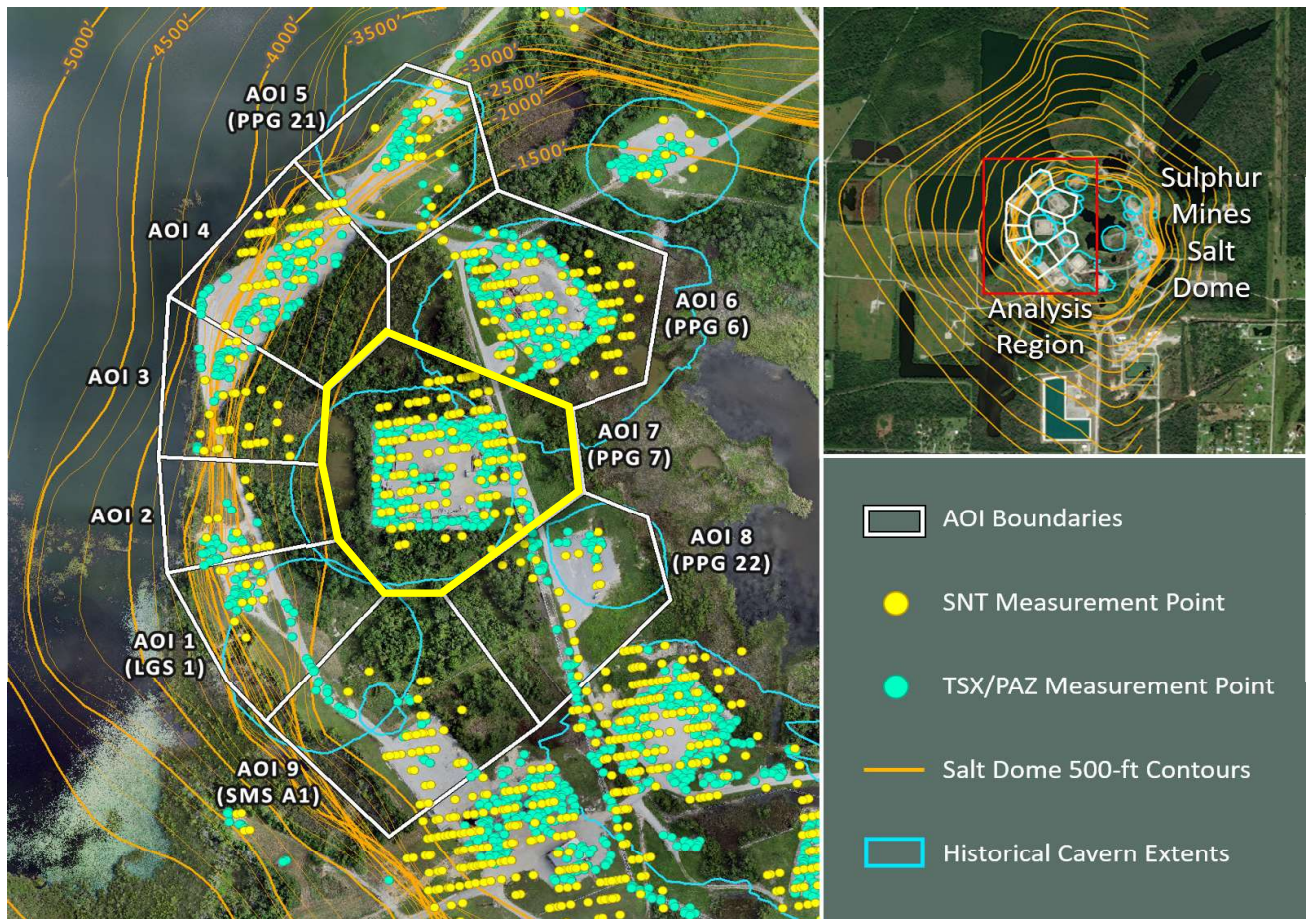
| | Nonlinear Trend | Linear Trend |
|---------------|--------------------------|-------------------------|
| Velocity: | +0.15 in/yr | -0.41 in/yr |
| Acceleration: | +1.40 in/yr ² | 0.00 in/yr ² |

■ LOS Displacement Measurement

--- Nonlinear Trend Line
(Quadratic Regression)

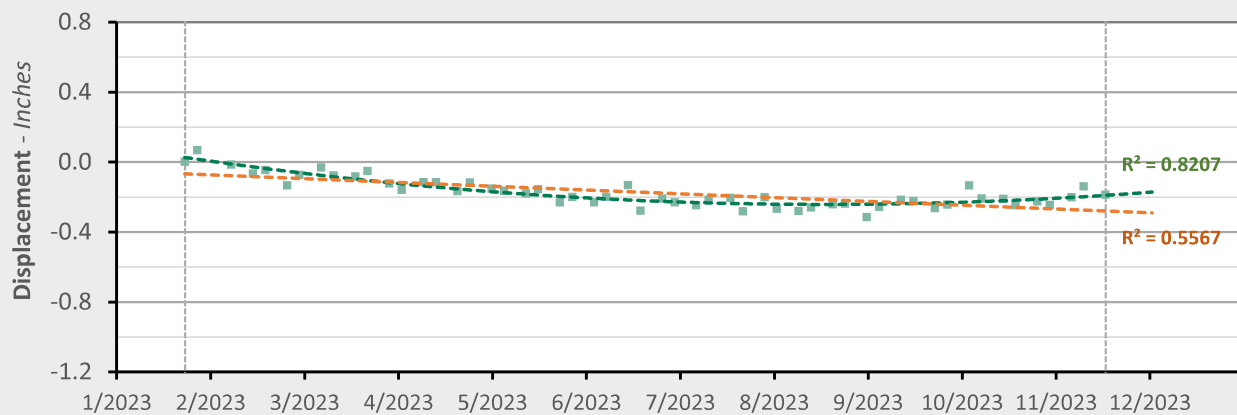
--- Linear Trend Line
(Linear Regression)

AOI 7 (PPG 7) - Location Map



AOI 7 (PPG 7) - Displacement Time Series

TSX/PAZ (11/17/2023) Point Count: 214



Nonlinear Trend

Linear Trend

Velocity: +0.42 in/yr

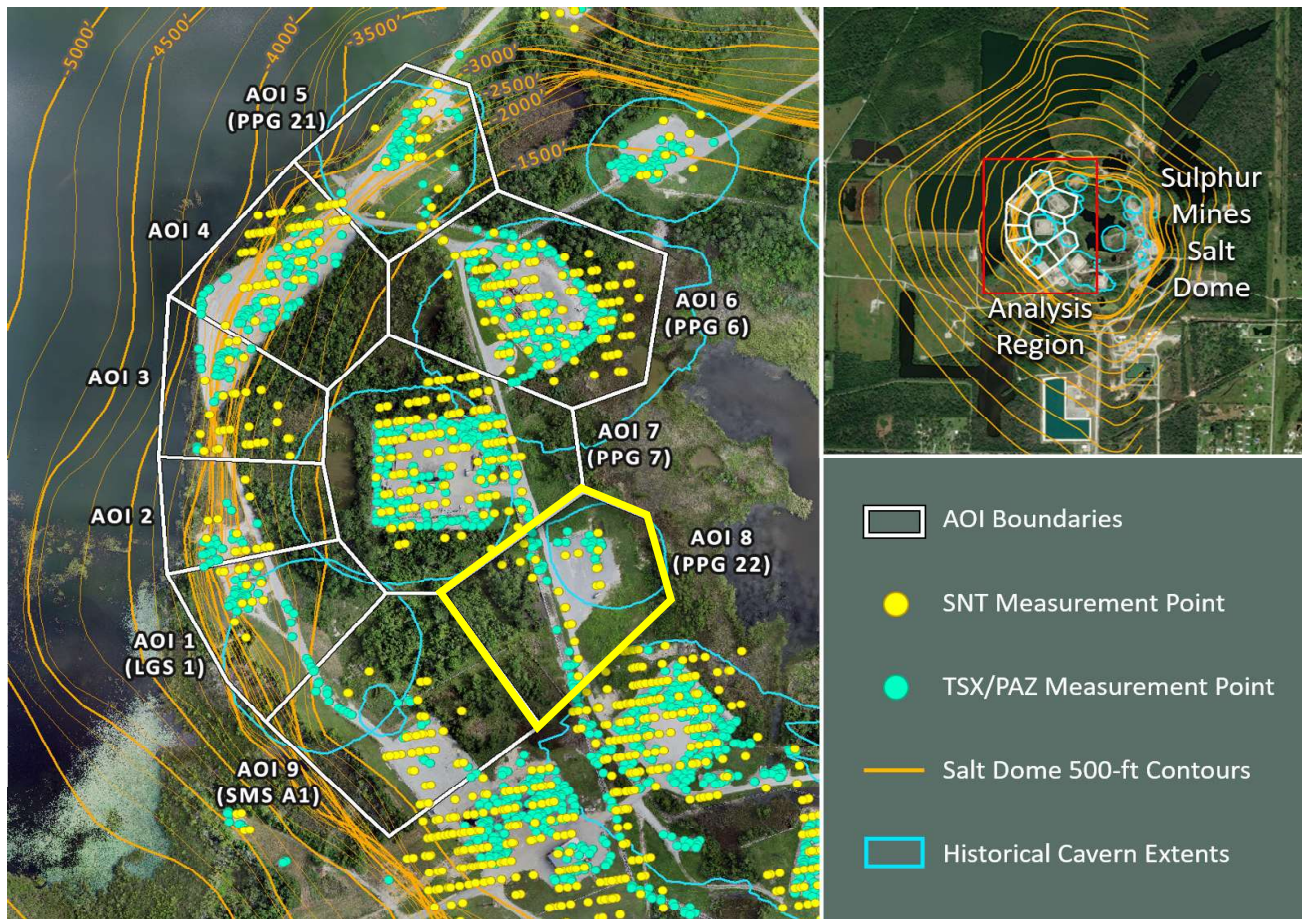
-0.26 in/yr

Acceleration: +1.68 in/yr²0.00 in/yr²

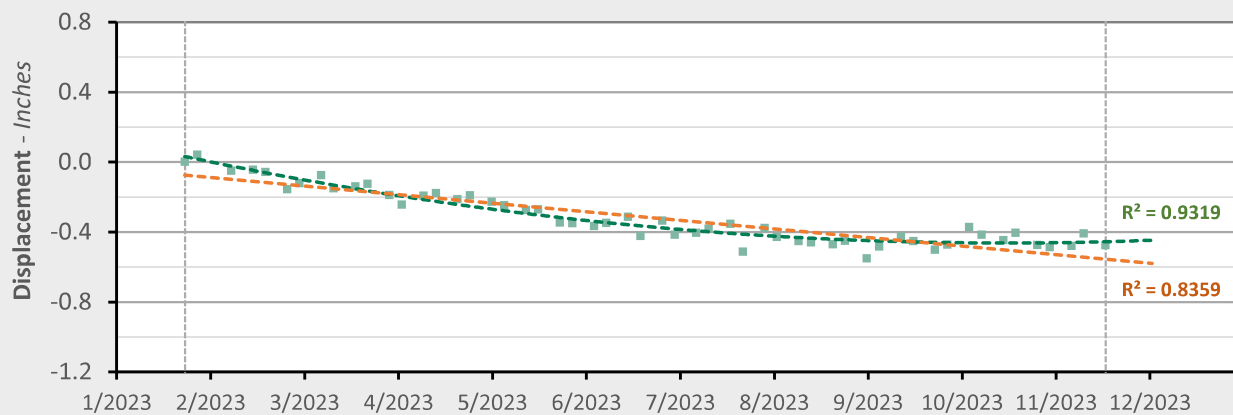
■ LOS Displacement Measurement

--- Nonlinear Trend Line
(Quadratic Regression)--- Linear Trend Line
(Linear Regression)

AOI 8 (PPG 22) - Location Map



AOI 8 (PPG 22) - Displacement Time Series TSX/PAZ (11/17/2023) Point Count: 40



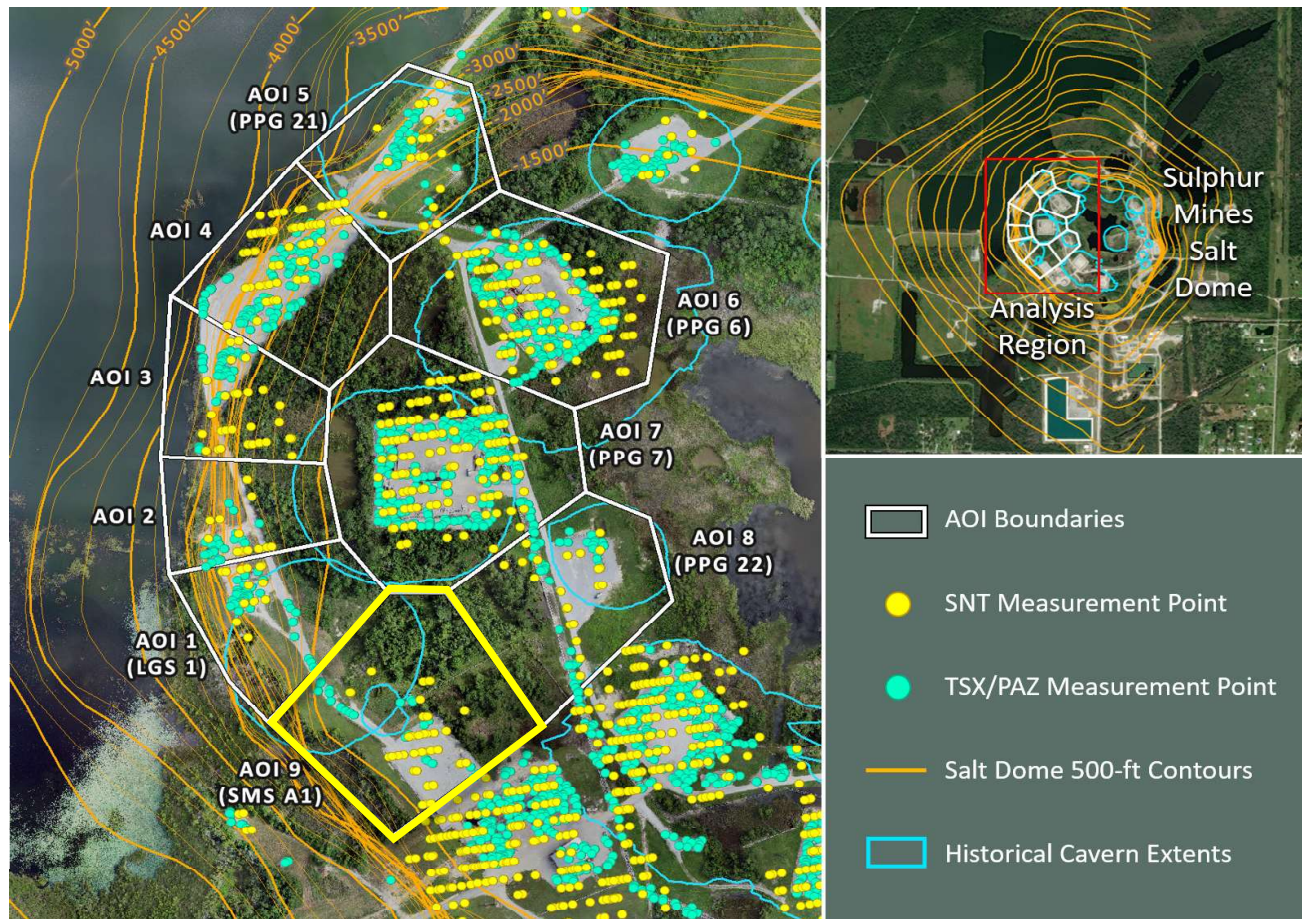
| | Nonlinear Trend | Linear Trend |
|---------------|--------------------------|-------------------------|
| Velocity: | +0.17 in/yr | -0.59 in/yr |
| Acceleration: | +1.88 in/yr ² | 0.00 in/yr ² |

■ LOS Displacement Measurement

--- Nonlinear Trend Line
(Quadratic Regression)

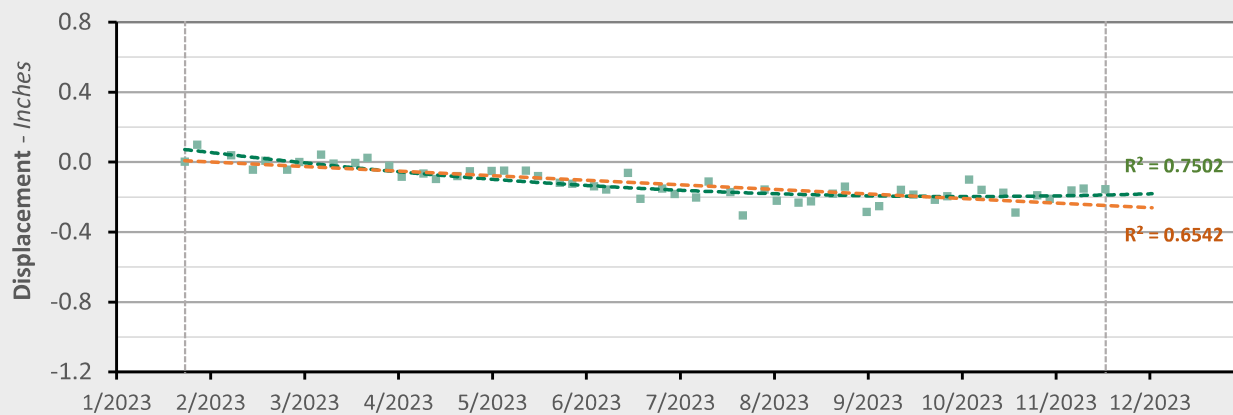
--- Linear Trend Line
(Linear Regression)

AOI 9 (PPG A1) - Location Map



AOI 9 (SMS A1) - Displacement Time Series

TSX/PAZ (11/17/2023) Point Count: 26



Nonlinear Trend

Linear Trend

Velocity: +0.14 in/yr

-0.32 in/yr

Acceleration: +1.14 in/yr²

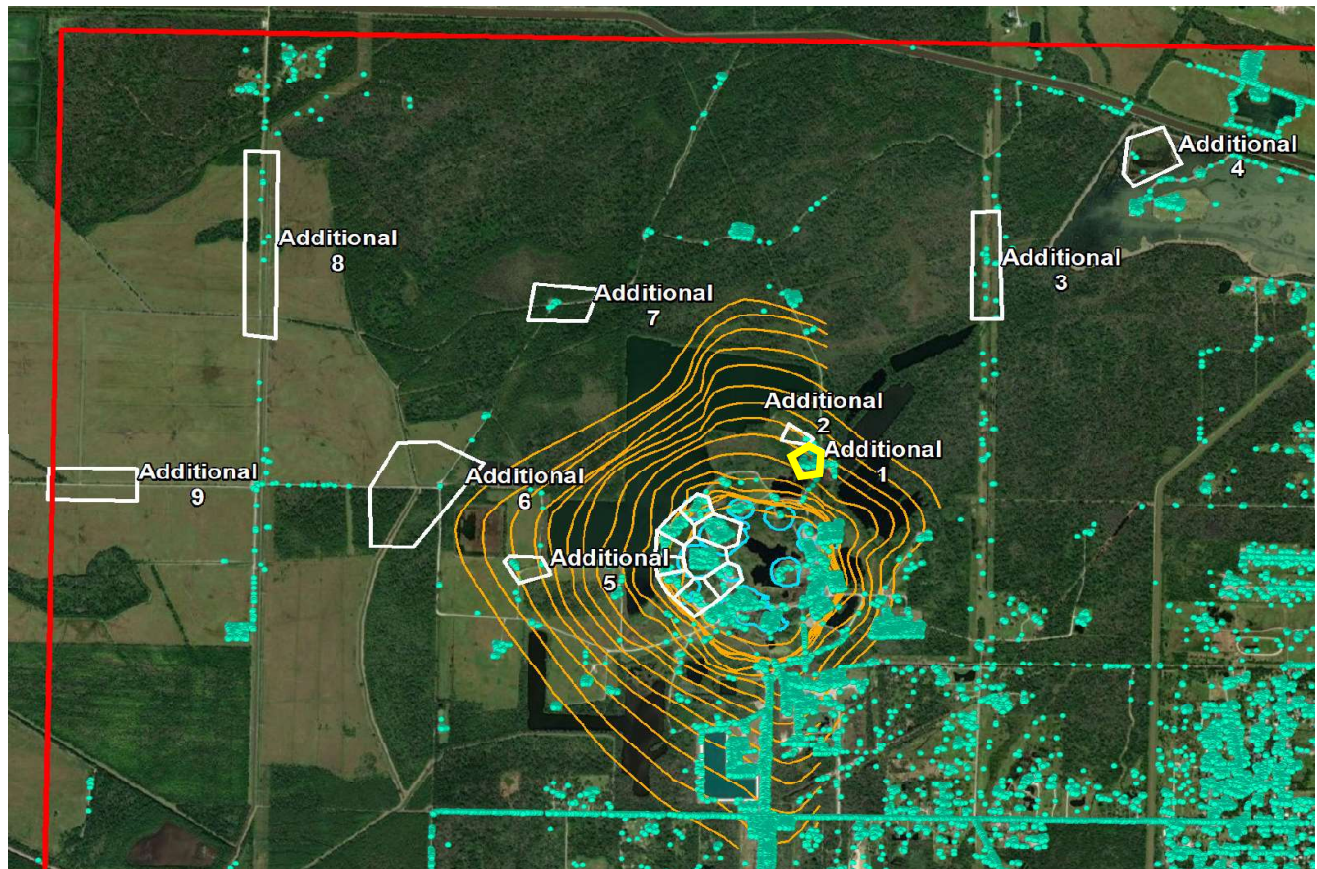
0.00 in/yr²

■ LOS Displacement Measurement

--- Nonlinear Trend Line
(Quadratic Regression)

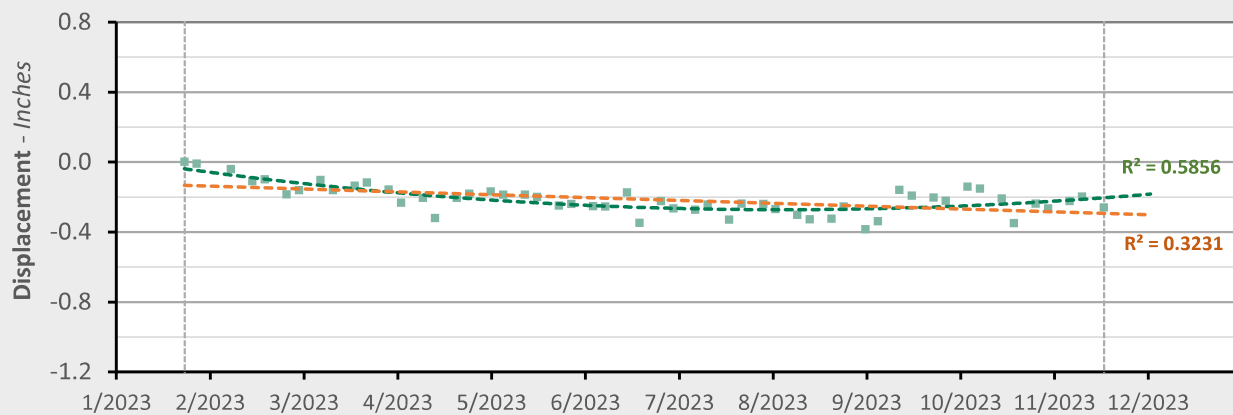
--- Linear Trend Line
(Linear Regression)

Additional 1 - Location Map



Additional 1 - Displacement Time Series

TSX/PAZ (11/17/2023) Point Count: 63

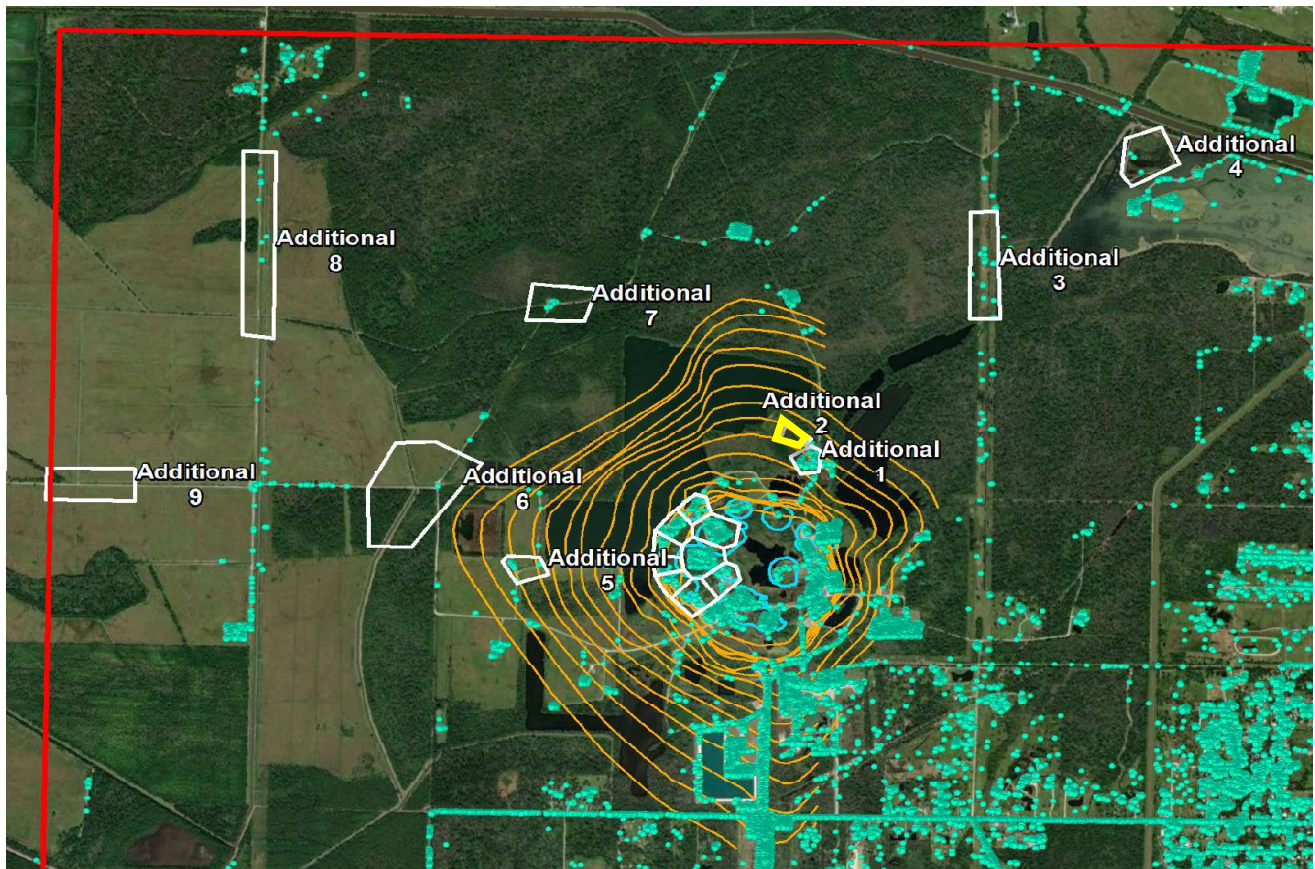


| | Nonlinear Trend | Linear Trend |
|---------------|--------------------------|-------------------------|
| Velocity: | +0.48 in/yr | -0.20 in/yr |
| Acceleration: | +1.67 in/yr ² | 0.00 in/yr ² |

■ LOS Displacement Measurement

--- Nonlinear Trend Line
(Quadratic Regression)--- Linear Trend Line
(Linear Regression)

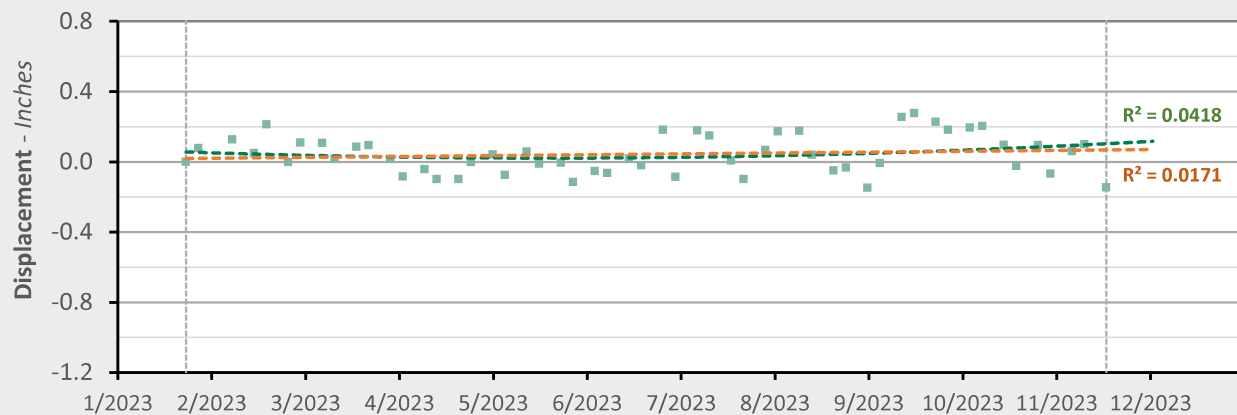
Additional 2 - Location Map



Additional 2 - Displacement Time Series

TSX/PAZ (11/17/2023) Point Count:

2

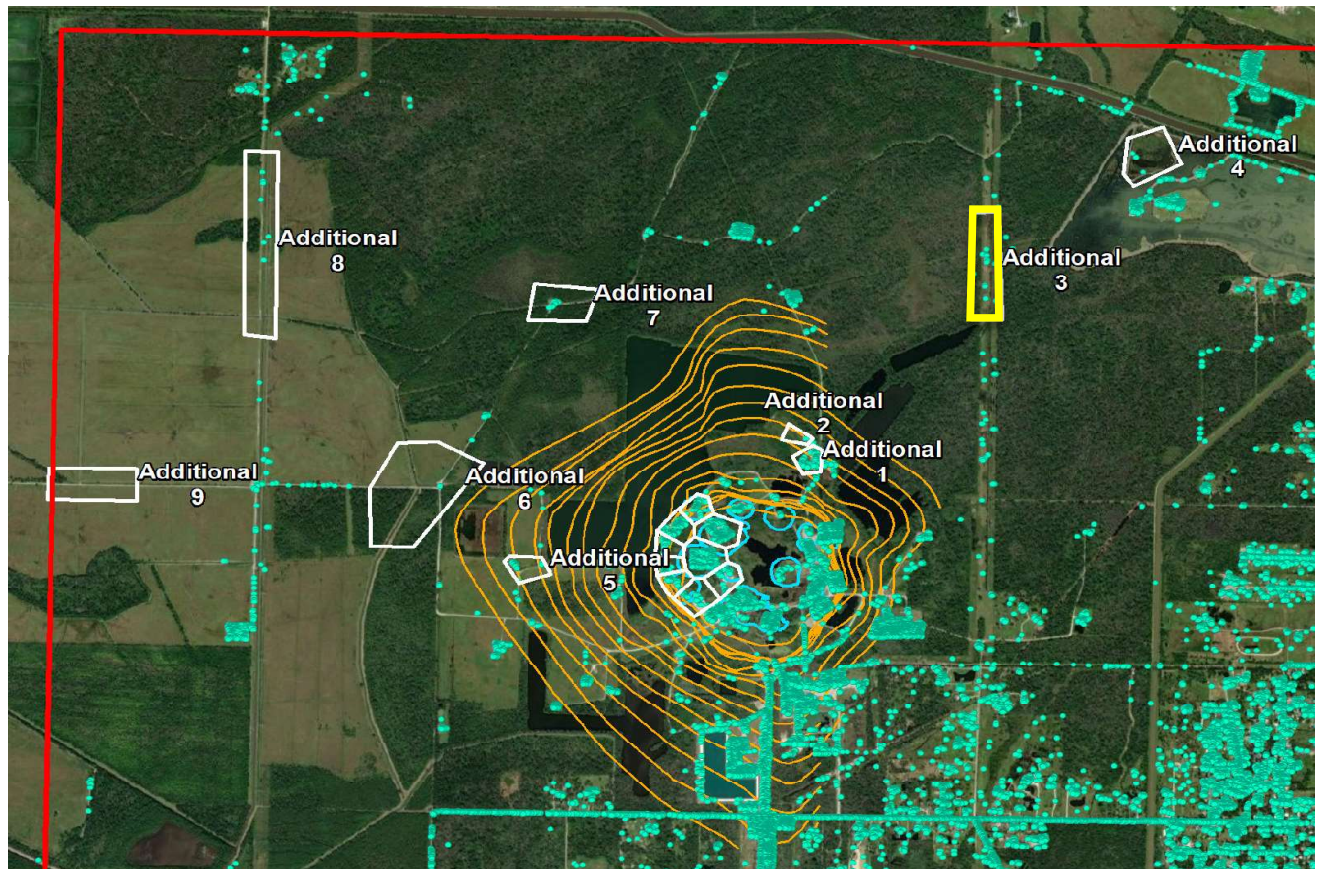


| | Nonlinear Trend | Linear Trend |
|---------------|--------------------------|-------------------------|
| Velocity: | +0.33 in/yr | +0.06 in/yr |
| Acceleration: | +0.67 in/yr ² | 0.00 in/yr ² |

■ LOS Displacement Measurement

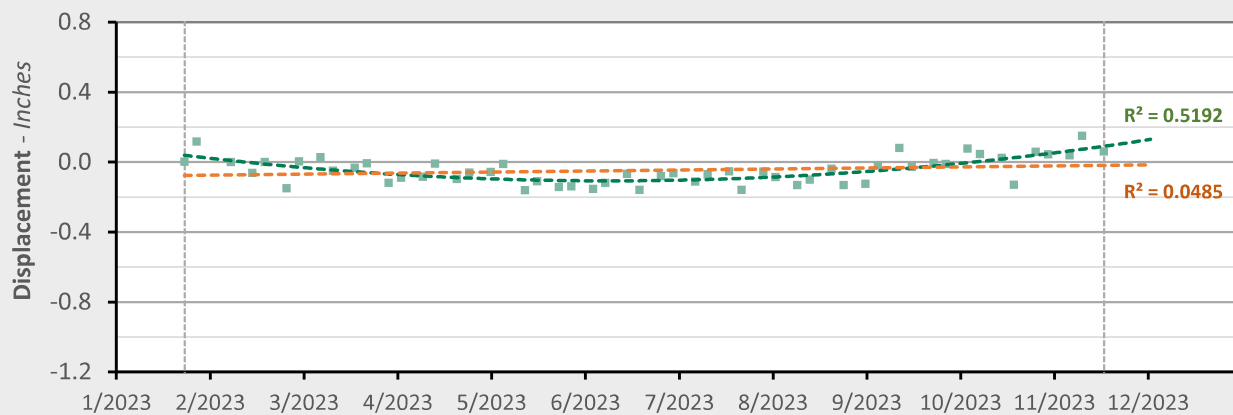
--- Nonlinear Trend Line
(Quadratic Regression)--- Linear Trend Line
(Linear Regression)

Additional 3 - Location Map



Additional 3 - Displacement Time Series

TSX/PAZ (11/17/2023) Point Count: 26

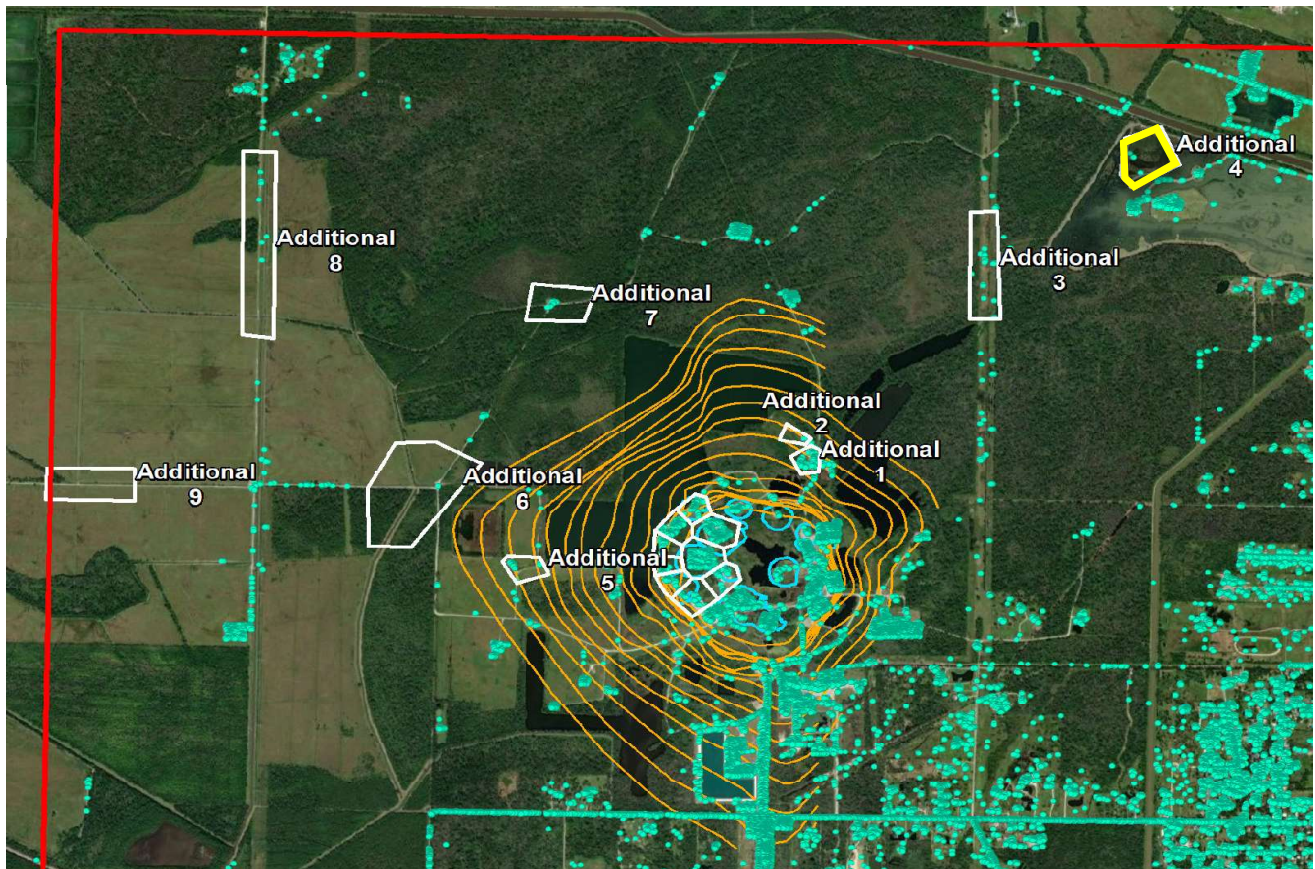


| | Nonlinear Trend | Linear Trend |
|---------------|--------------------------|-------------------------|
| Velocity: | +0.90 in/yr | +0.07 in/yr |
| Acceleration: | +2.07 in/yr ² | 0.00 in/yr ² |

■ LOS Displacement Measurement

--- Nonlinear Trend Line
(Quadratic Regression)--- Linear Trend Line
(Linear Regression)

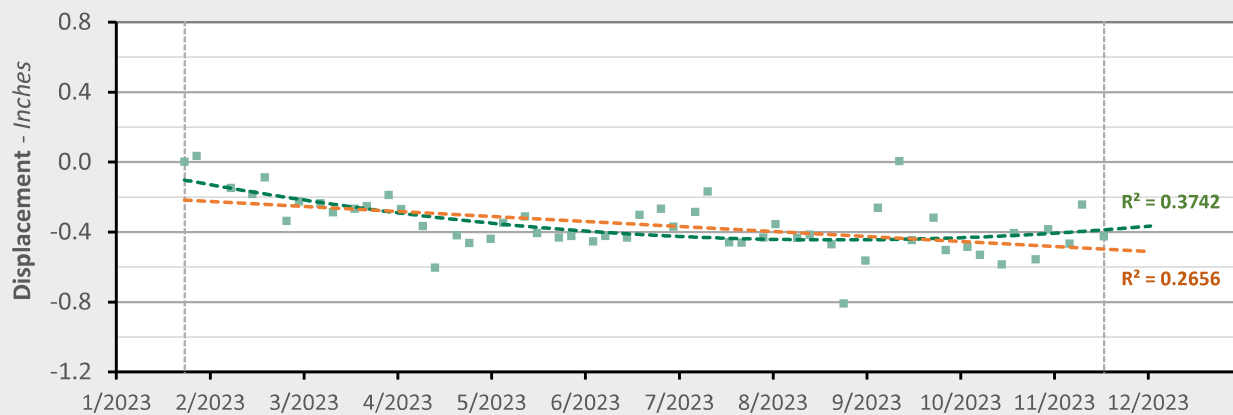
Additional 4 - Location Map



Additional 4 - Displacement Time Series

TSX/PAZ (11/17/2023) Point Count:

3

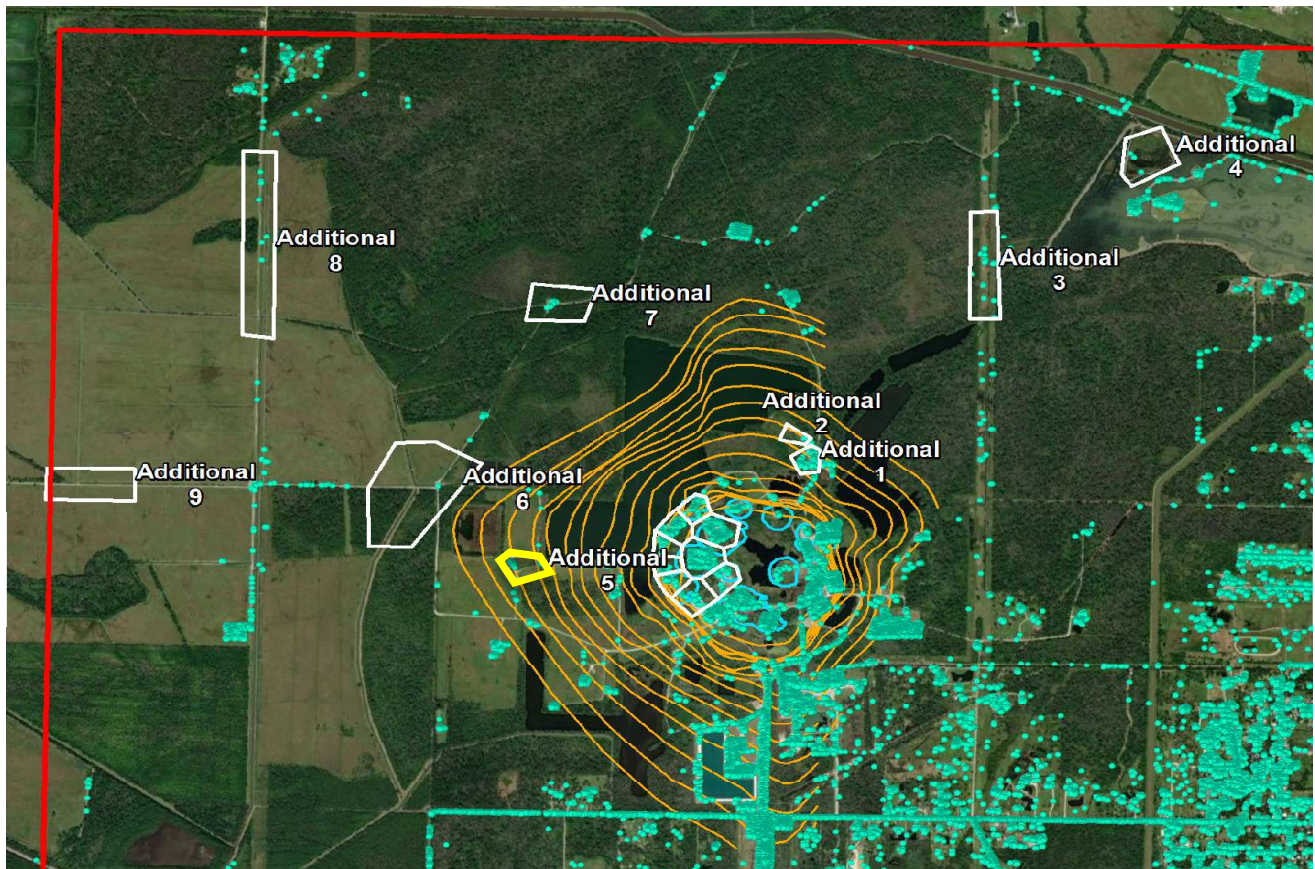


| | Nonlinear Trend | Linear Trend |
|---------------|--------------------------|-------------------------|
| Velocity: | +0.49 in/yr | -0.34 in/yr |
| Acceleration: | +2.06 in/yr ² | 0.00 in/yr ² |

■ LOS Displacement Measurement

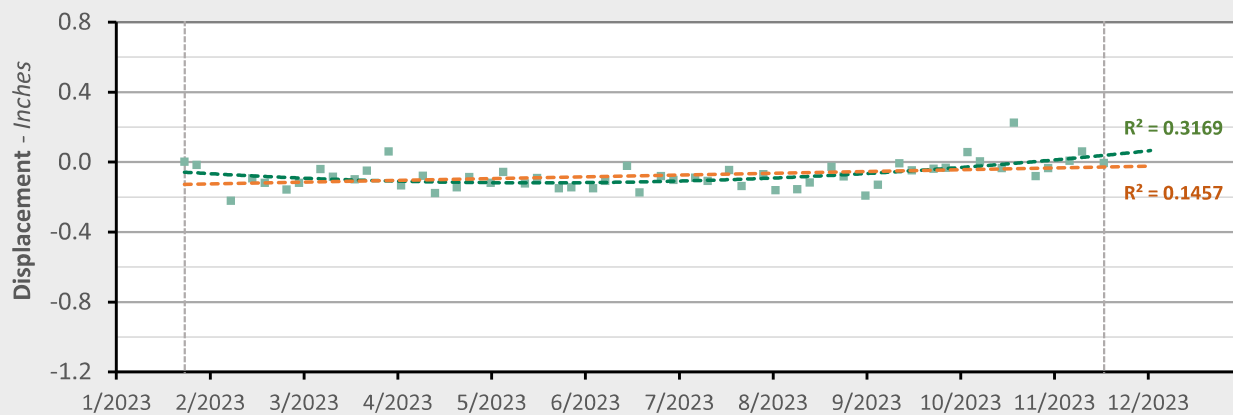
--- Nonlinear Trend Line
(Quadratic Regression)--- Linear Trend Line
(Linear Regression)

Additional 5 - Location Map



Additional 5 - Displacement Time Series

TSX/PAZ (11/17/2023) Point Count: 14

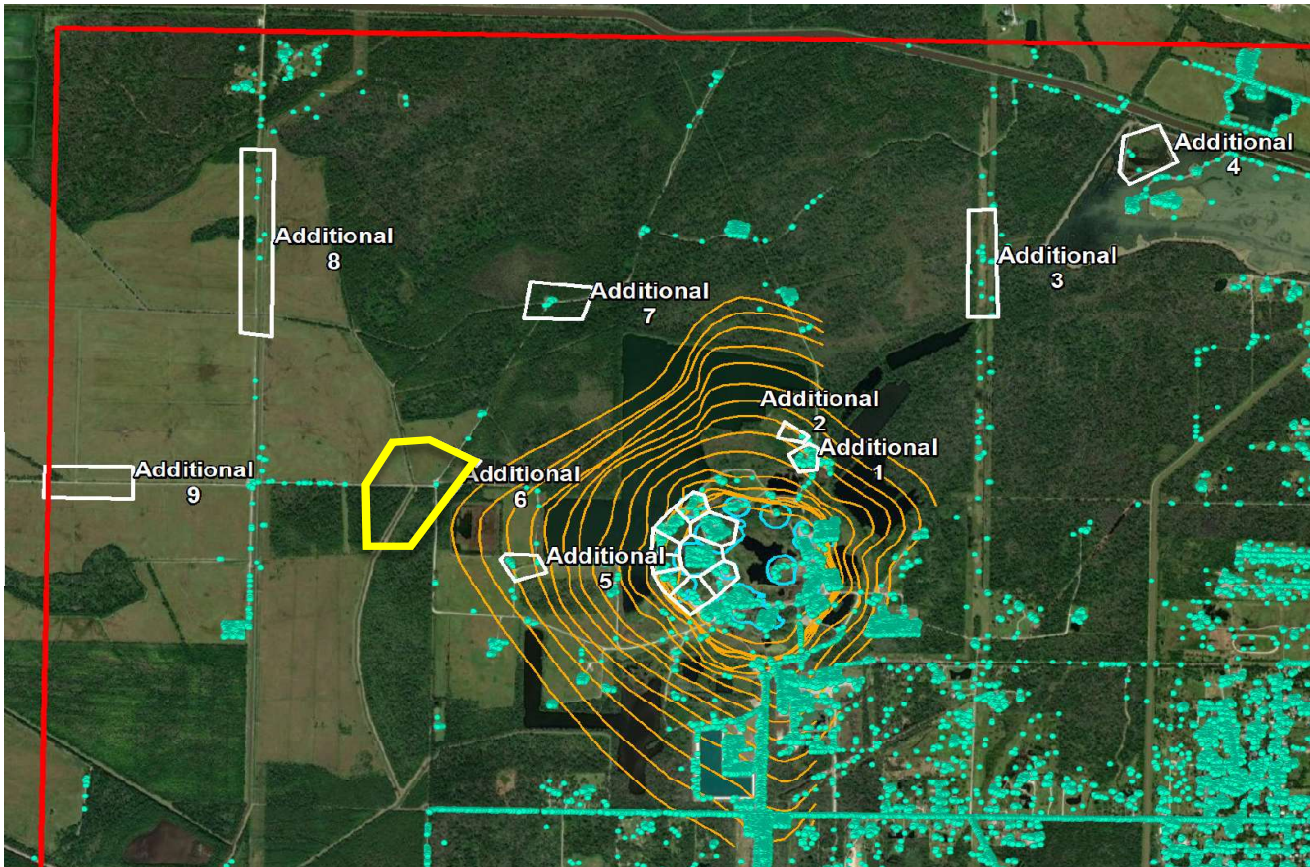


| | Nonlinear Trend | Linear Trend |
|---------------|--------------------------|-------------------------|
| Velocity: | +0.63 in/yr | +0.12 in/yr |
| Acceleration: | +1.25 in/yr ² | 0.00 in/yr ² |

■ LOS Displacement Measurement

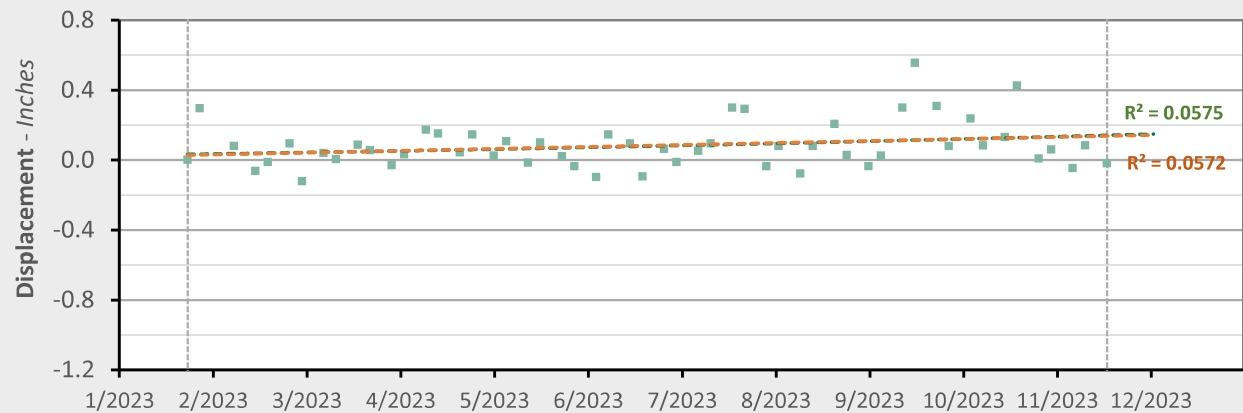
--- Nonlinear Trend Line
(Quadratic Regression)--- Linear Trend Line
(Linear Regression)

Additional 6 - Location Map



Additional 6 - Displacement Time Series

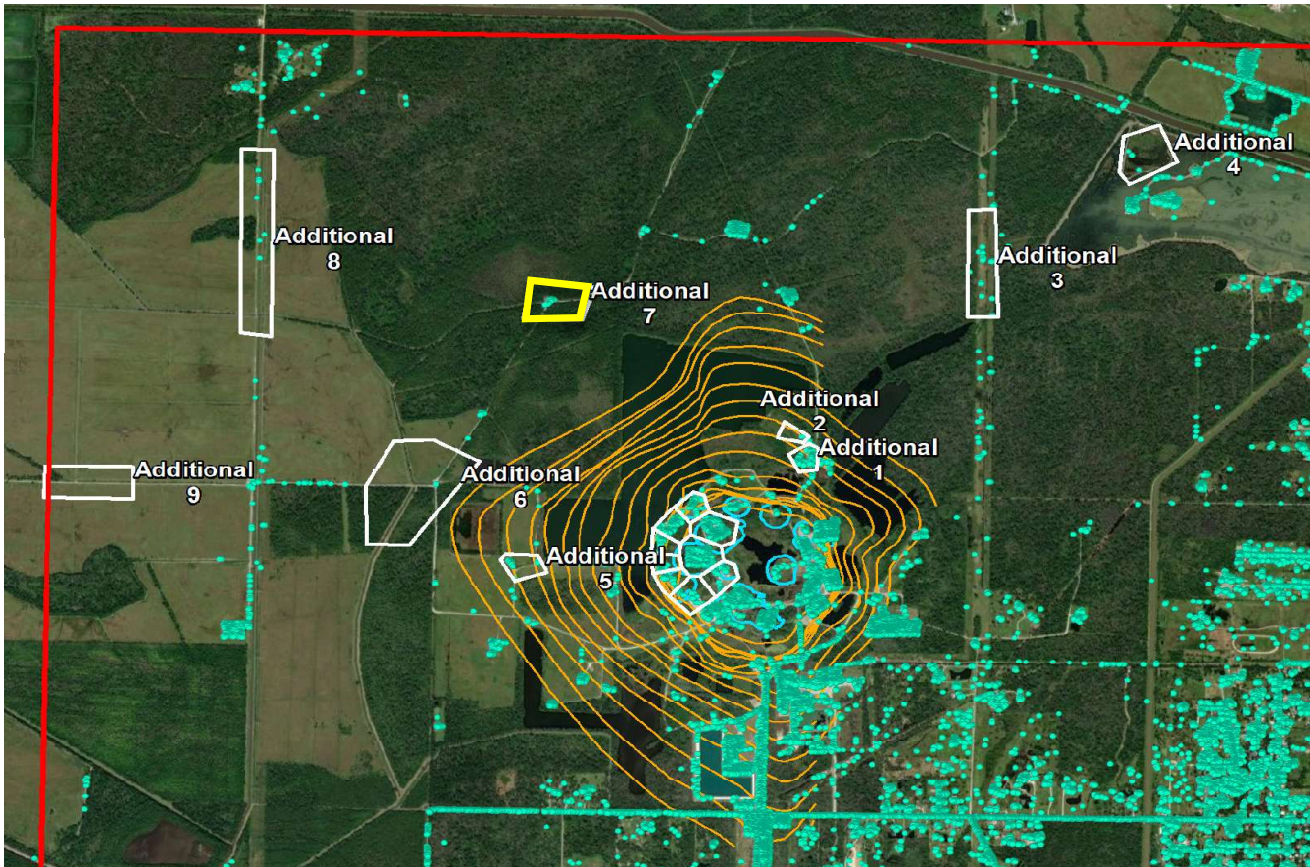
TSX/PAZ (11/17/2023) Point Count: 1



| | Nonlinear Trend | Linear Trend |
|---------------|--------------------------|-------------------------|
| Velocity: | +0.17 in/yr | +0.13 in/yr |
| Acceleration: | +0.09 in/yr ² | 0.00 in/yr ² |

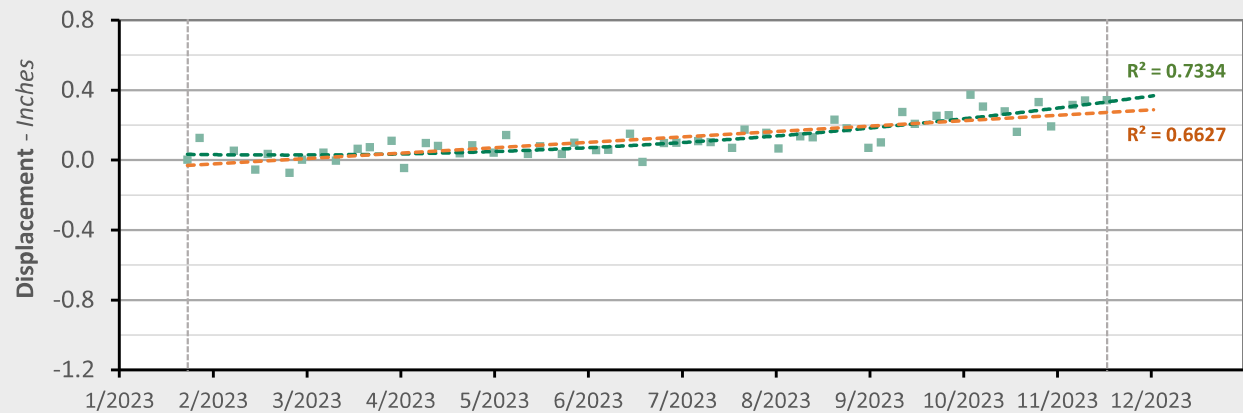
■ LOS Displacement Measurement - - - Nonlinear Trend Line (Quadratic Regression) - - - Linear Trend Line (Linear Regression)

Additional 7 - Location Map



Additional 7 - Displacement Time Series

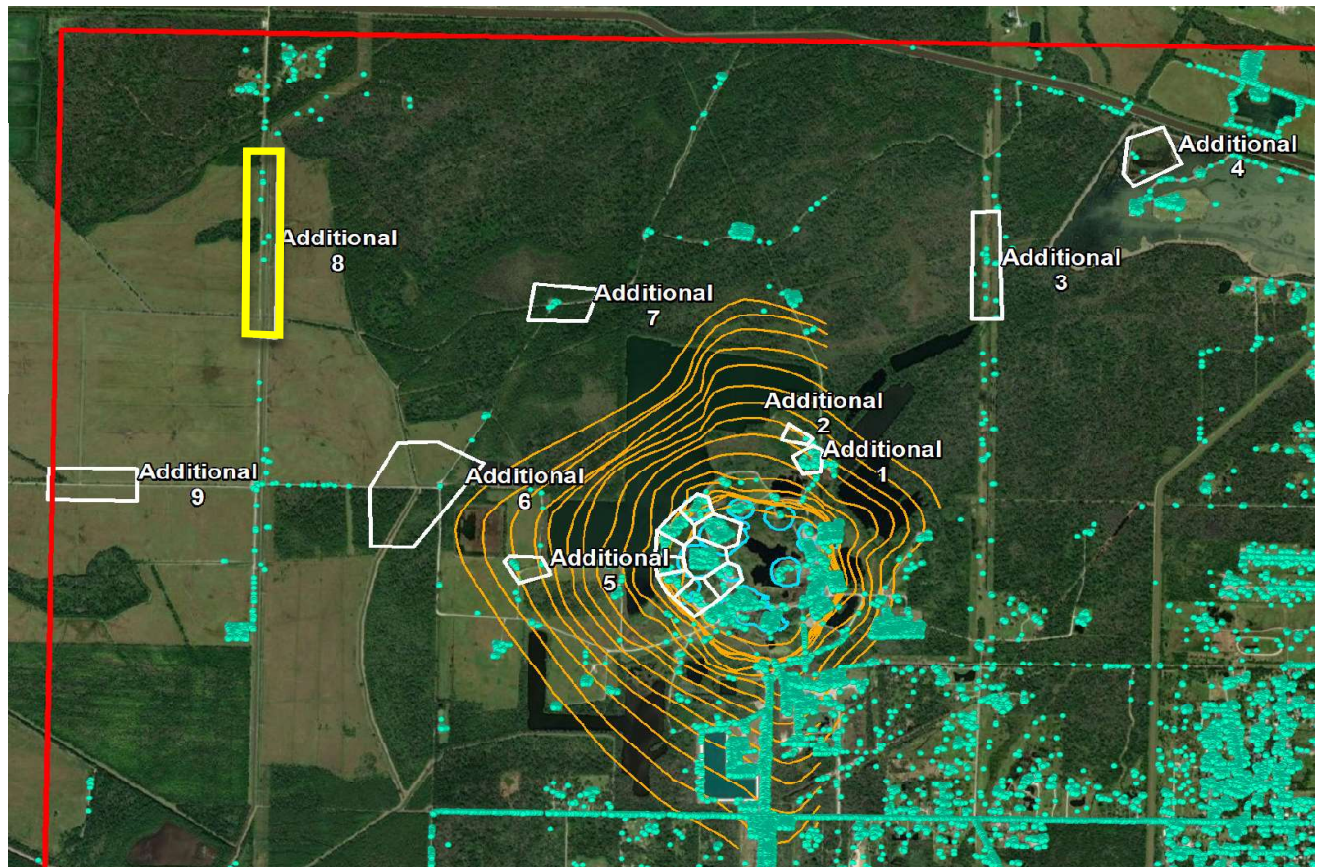
TSX/PAZ (11/17/2023) Point Count: 10



| | Nonlinear Trend | Linear Trend |
|---------------|--------------------------|-------------------------|
| Velocity: | +0.83 in/yr | +0.37 in/yr |
| Acceleration: | +1.14 in/yr ² | 0.00 in/yr ² |

■ LOS Displacement Measurement - - - Nonlinear Trend Line (Quadratic Regression) - - - Linear Trend Line (Linear Regression)

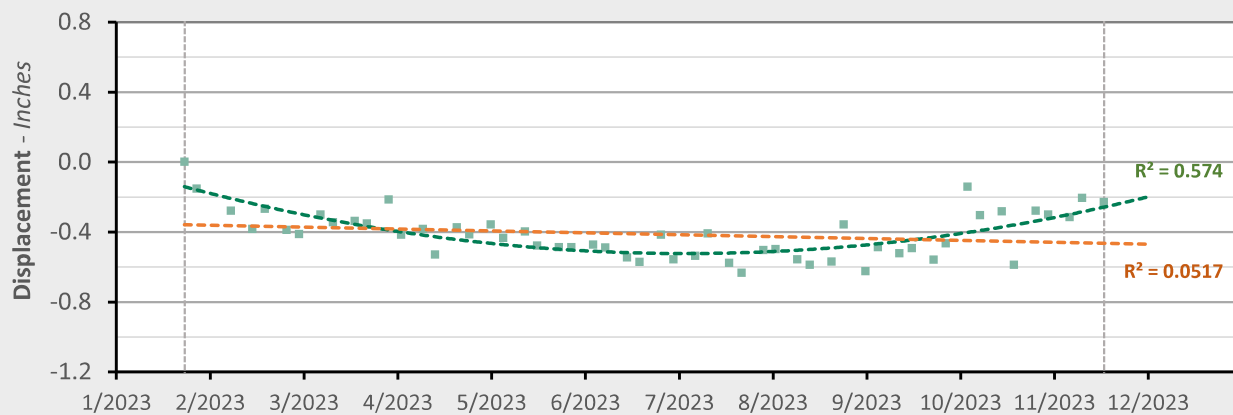
Additional 8 - Location Map



Additional 8 - Displacement Time Series

TSX/PAZ (11/17/2023) Point Count:

7



Nonlinear Trend

Linear Trend

Velocity: +1.44 in/yr

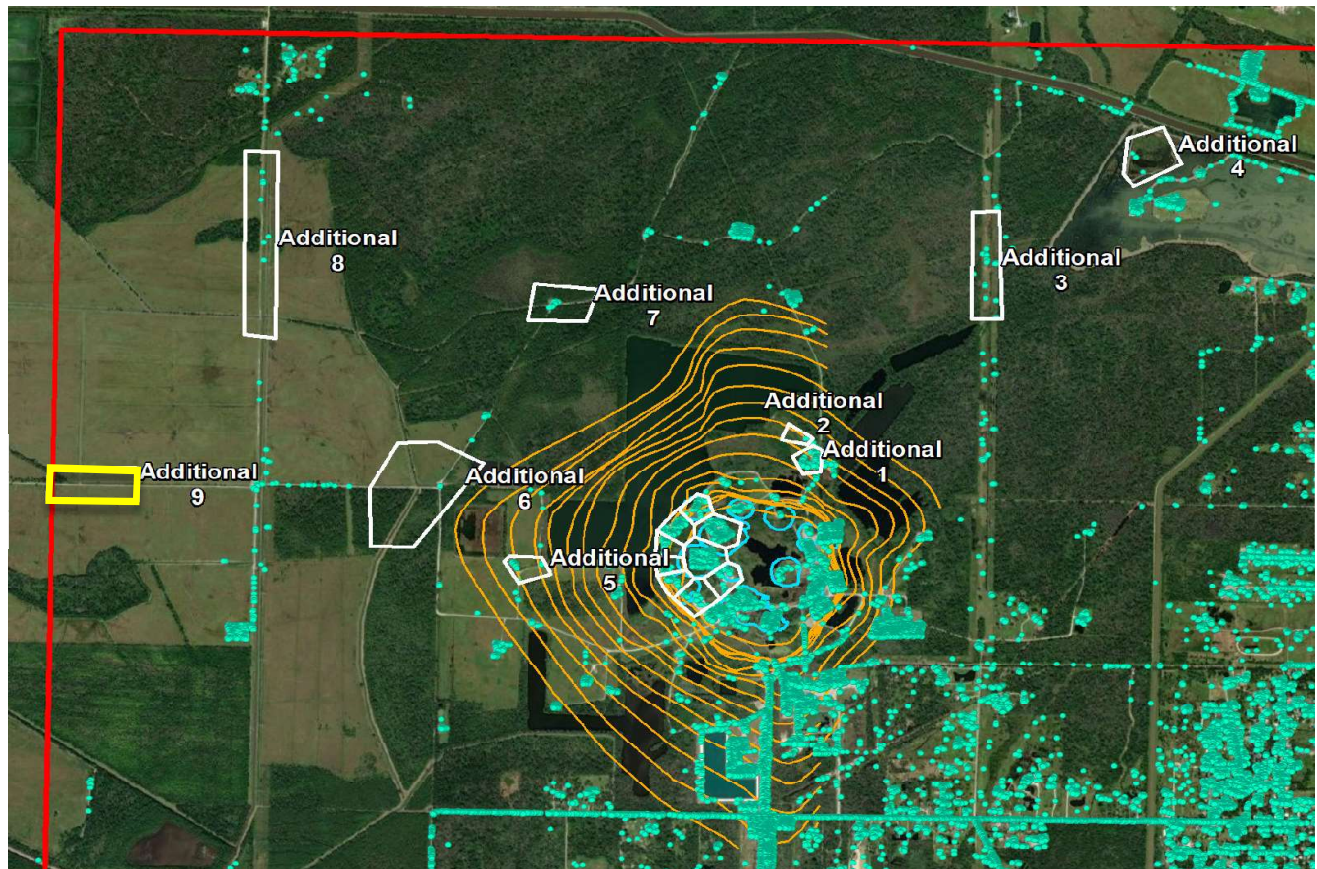
-0.13 in/yr

Acceleration: +3.88 in/yr²0.00 in/yr²

■ LOS Displacement Measurement

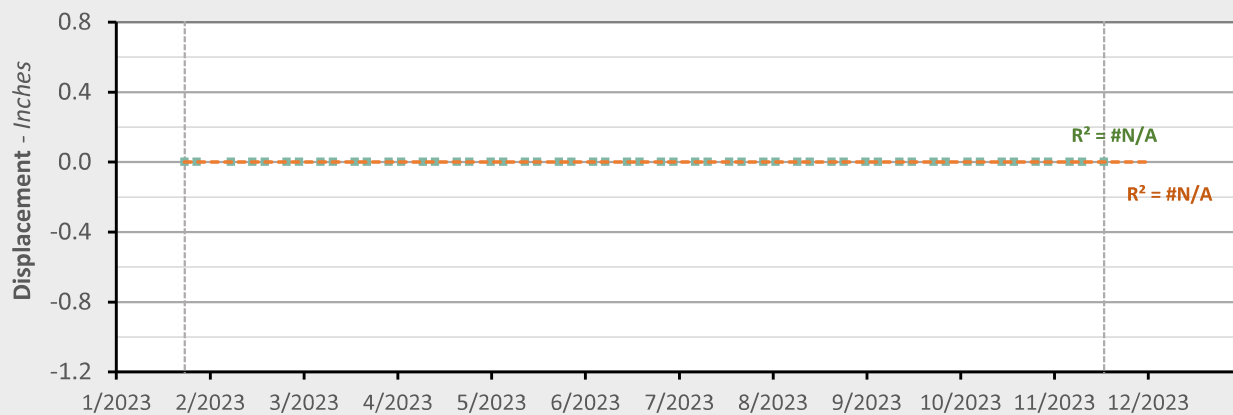
--- Nonlinear Trend Line
(Quadratic Regression)--- Linear Trend Line
(Linear Regression)

Additional 9 - Location Map



Additional 9 - Displacement Time Series

TSX/PAZ (11/17/2023) Point Count: 0



| | Nonlinear Trend | | Linear Trend | |
|---------------|-----------------|--------------------|--------------|--------------------|
| Velocity: | #VALUE! | in/yr | #VALUE! | in/yr |
| Acceleration: | #VALUE! | in/yr ² | 0.00 | in/yr ² |

■ LOS Displacement Measurement

--- Nonlinear Trend Line
(Quadratic Regression)--- Linear Trend Line
(Linear Regression)