

Westlake US 2  
Received 11/4/2024

**TSX/PAZ Satellite Update**  
**InSAR Subsidence**  
October 27, 2024

Lonquist comment:

The PAZ satellite from the TSX/PAZ constellation (4 & 7-day revisit) passed by Sulphur on Sunday October 27. We received the dataset Tuesday and verified that none of the point groups within the review area are showing deviation from their respective trends. The attached report has been prepared for reference.

# TSX/PAZ Satellite Update

Continuous InSAR Monitoring of  
Ground Displacement At Westlake  
Caverns and Western Dome Flank

## Sulphur Mines Salt Dome

Prepared for:  
**Westlake Chemical**

Prepared by:  
Lonquist & Co., LLC  
8591 United Plaza Blvd.  
Suite 280  
Baton Rouge, LA 70809

Dataset
Satellite Source
<b>TerraSAR-X - PAZ Constellation</b>
Most Recent Image Date
<b>Sunday, October 27, 2024</b>

Analysis Report Date:  
**October 31, 2024**

## Dataset Information

Satellite Source	TerraSAR-X - PAZ Constellation
Revisit Frequency	4 and 7 days
Most Recent Image Date	Sunday, October 27, 2024
Dataset Image Count	113
Dataset Time Range	January 24, 2023 - October 27, 2024
Dataset Length	1.76 Years
Satellite Line-of-Sight (LOS)	37° East of Vertical (Viewing site from the East)

## Analysis Methodology

### Time Series Charts

Trend lines were calculated for the averaged displacement values within each AOI. Both a nonlinear (quadratic) and linear regression were applied to each AOI point group to identify rates of change in LOS displacement. These trends are displayed in the Time Series section of this report.

### Contour Maps

A nonlinear (quadratic) and linear trend was also calculated for each individual measurement point across the analysis region. Nonlinear trend values for each point were used to generate Velocity and Acceleration contour maps to convey the spatial distribution of the calculated movement. The linear trend values for each point (which lack an acceleration component) were used to generate an additional Velocity contour map. Maps depicting the individual data points colored by these trend values are also included in the last section of the report.

Negative velocity values indicate subsidence or westward movement and positive velocity indicates uplift or eastward movement. Negative acceleration values indicate increasing rates of subsidence, increasing westward movement, or slowing eastward movement and positive acceleration values indicate slowing rates of subsidence, slowing westward movement, or increasing eastward movement.

## Observations

To-date there have been no acute deviations from established subsidence trends in the areas investigated.

The timeframe of the dataset does not allow for comparison of recent to long-term LOS displacement rates. This dataset is primarily used to monitor for acute trend deviations and benefits from a higher measurement precision in individual readings than the SNT data.

Recent data has begun to indicate a negative acceleration of varying magnitudes across most of the AOI point groups evaluated. This is most evident in the trend acceleration values in the westernmost AOIs and in the mapped contours on the western side of AOI 2, AOI 3 and AOI 4. This suggests that marginal increases in subsidence rates may be occurring in this area of the dome. Seasonal effects are believed to contribute to fluctuations above and below the trend lines for each AOI and may play a significant role in the gradual changes that are being observed.



Date Signed: October 31, 2024  
Austin, Texas

Nathaniel L. Byars, P.E.  
Principal Engineer  
Louisiana License No. 40697

## InSAR Data Sources

### InSAR Data

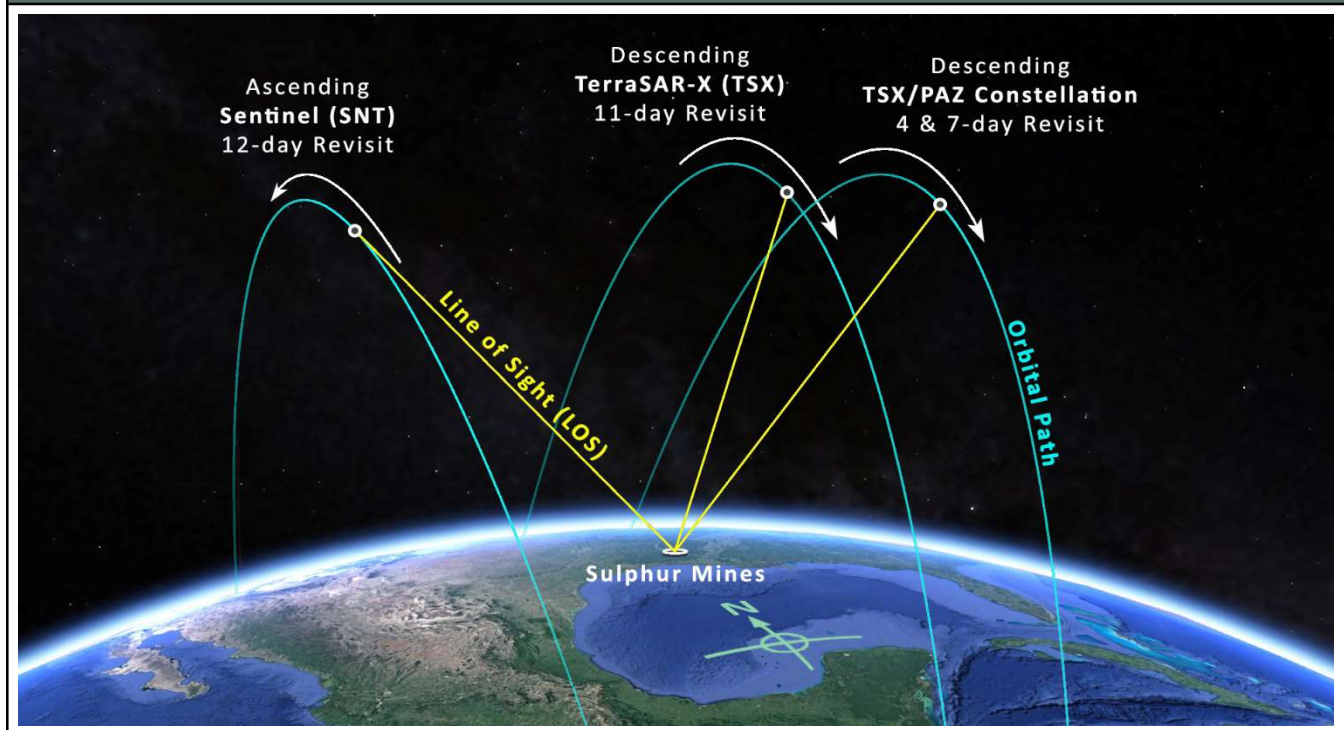
Interferometric Synthetic Aperture Radar (InSAR) is the most well established method to continually evaluate small, normally undetectable, ground movement over a large area. Radar imagery collected via satellites over successive orbital passes is used to identify and define measurement points on the ground. Objects or ground features providing a stable reflection of radar energy such as buildings, roads, and infrastructure produce the highest quality measurement points. InSAR analysis identifies the change in distance between the satellite and each measurement point over time relative to a stable reference point within the imaged area.

### Satellite Sources

Two InSAR datasets are being used to evaluate subsidence over the Sulphur Mines Salt Dome. These datasets provide Line-of-Sight (LOS) displacement measurements from both ascending and descending orbits. An ascending orbit denotes the satellite's longitudinal course from south to north as it passes over the site, while a descending orbit denotes the satellite is moving from north to south.

The first dataset comes from a low-resolution Sentinel-1 (SNT) satellite on an ascending orbit that captures data from the west of the site on a 12-day frequency. The second comes from a pair of high resolution satellites that share the same descending orbit and capture data from east of the site. These are a TSX satellite and the PAZ satellite (TSX/PAZ constellation), both with an 11-day revisit frequency. Their orbits are offset with the PAZ satellite passing over the site 4 days after the TSX satellite. Prior to May 2023, data was captured from a different high-resolution TerraSAR-X (TSX) satellite on a descending orbit that captured data from the east of the site on an 11-day frequency. The transition was made for the increased data frequency that resulted from a 4 and 7-day revisit period. The image below depicts the orbital paths of the satellites in relation to the Sulphur Mines Salt Dome.

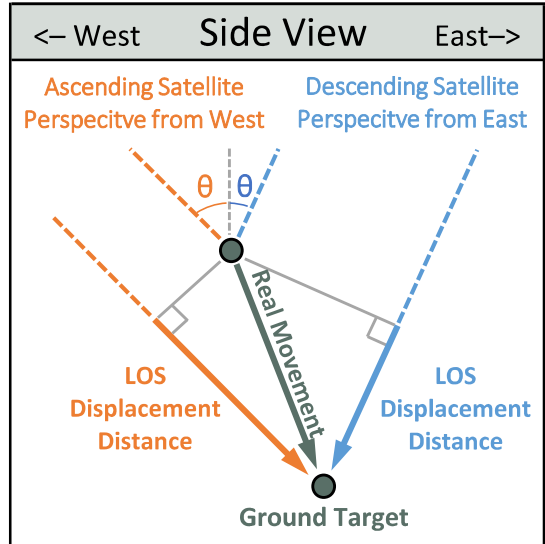
## Satellite Orbital Diagram





### InSAR Line-of-Site (LOS) Data

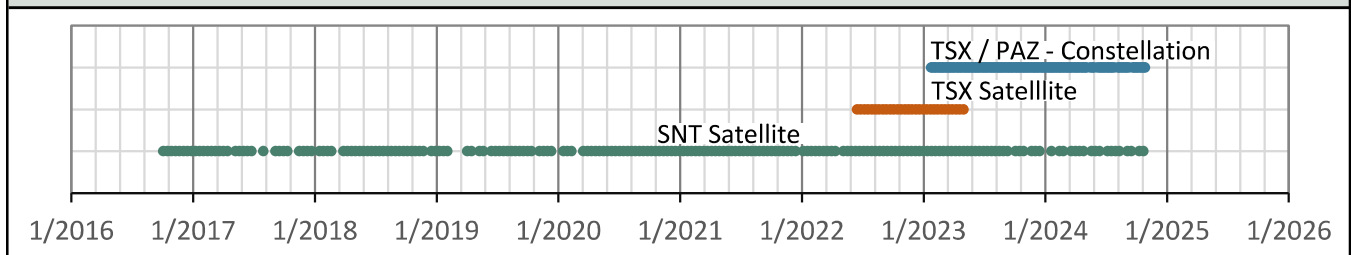
LOS displacement measurements refer to a change in distance between the satellite sensor and the ground target. Measurement positions on the west side of the Sulphur Dome are known to be experiencing some eastward movement toward the dome center due to the geometry of the subsidence basin. The InSAR satellites view the site from eastward and westward positions so LOS measurements are understood to convey a movement distance that is not purely vertical. The diagram to the right illustrates the geometric relationship between the theoretical Real movement of a ground target and LOS displacement measurements from two different satellite viewing directions.



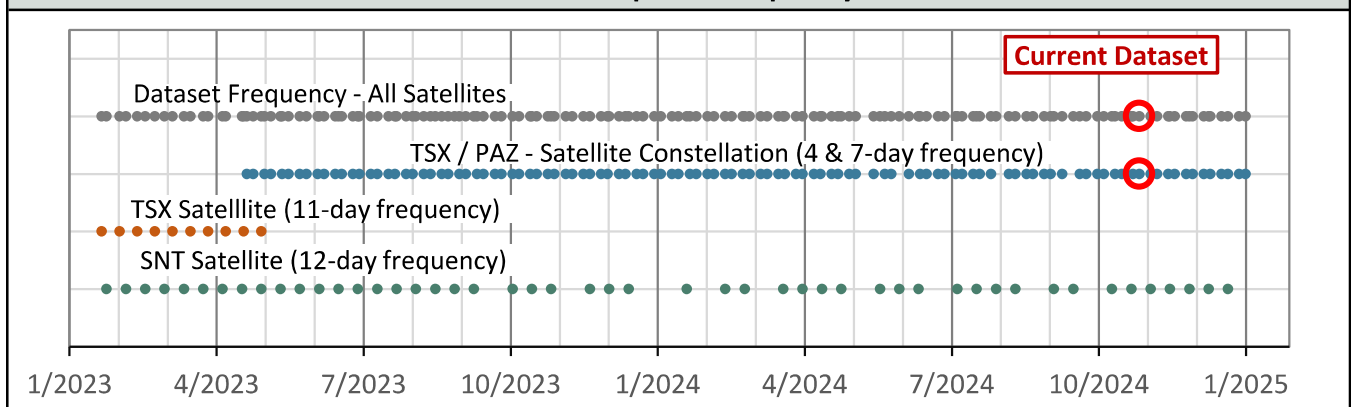
### Satellite Properties & Image Frequency

Satellite and Data Properties	SNT	TSX	TSX/PAZ Constellation
Band (Wavelength)	C-band (2.20 in)	X-band (1.22 in)	X-band (1.22 in)
Track	T136	T29	T67 & T120
Pixel resolution	65 x 16 ft	3 x 3 ft	3 x 3 ft
Revisit frequency	12 days	11 days	4 & 7 days
Orbit (LOS Angle, $\theta$ )	Ascending (43°)	Descending (17°)	Descending (37°)
Data Start Date	10/4/2016	6/16/2022	1/24/2023
Measurement error range	± 0.20 in	± 0.03 in	± 0.03 in

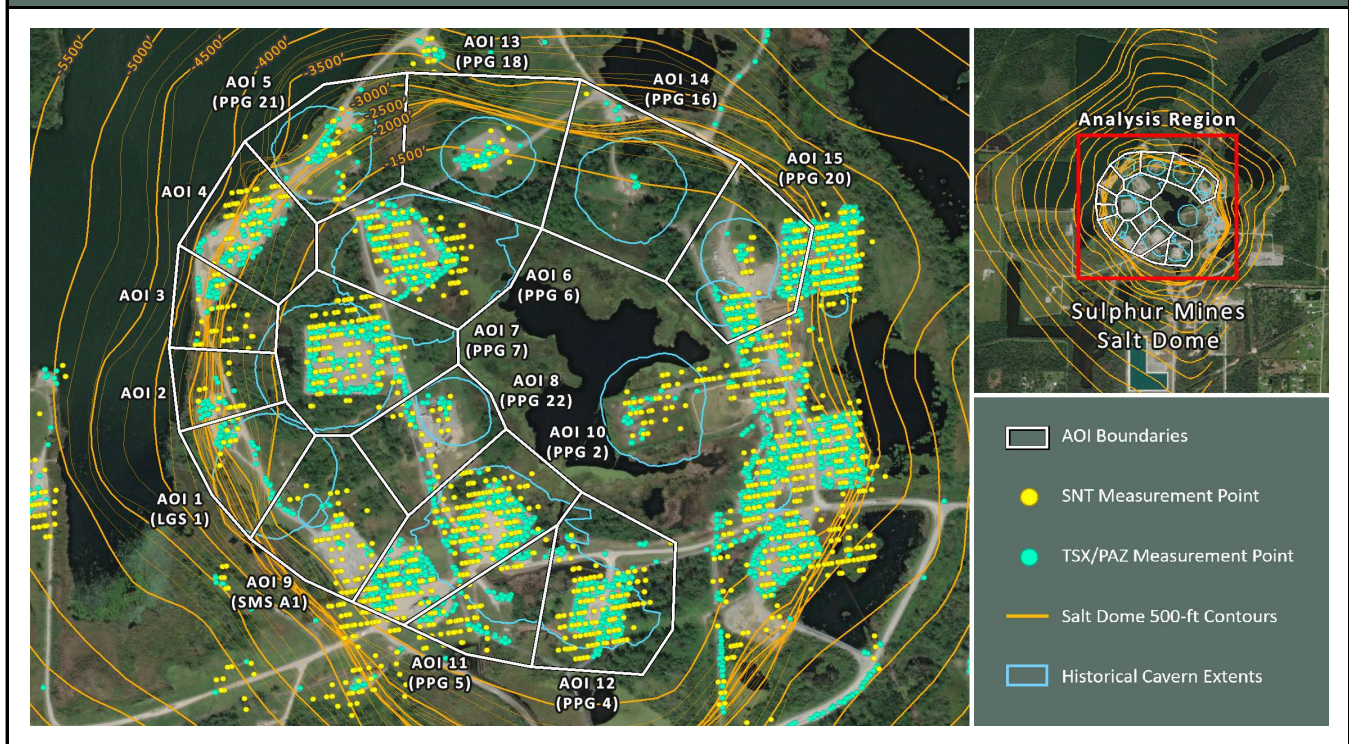
### Dataset Measurement History



### Dataset Update Frequency



## AOI Boundaries & InSAR Measurement Points



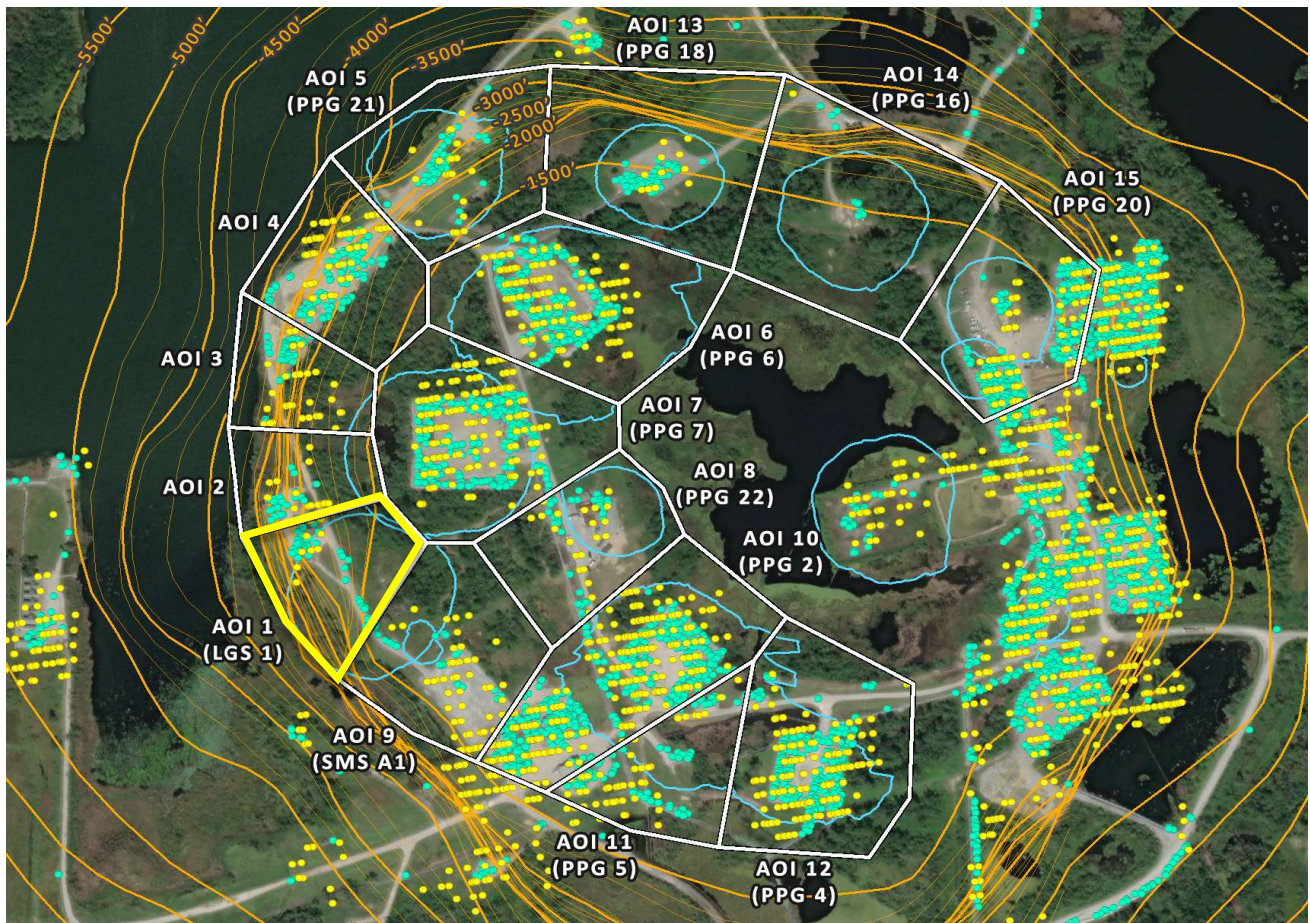
## Subsidence Monitoring Areas of Interest (AOIs)

To visually convey and evaluate trend consistency for the displacement time series of each ground target, measurement points were grouped and their displacement values were averaged. The point groups are referred to as Areas of Interest (AOIs) in this analysis and their boundaries are depicted on the above map. The below table lists the trend values calculated in each AOI for the dataset evaluated in this report.

AOI Name	TSX/PAZ (10/27/2024)	LOS Velocity (in/yr)		LOS Acceleration (in/yr <sup>2</sup> )	
	Point Count	Nonlinear	Linear	Nonlinear	Linear
AOI 1 (LGS 1)	42	-0.41	-0.10	-0.35	0.00
AOI 2	24	-0.52	-0.11	-0.47	0.00
AOI 3	40	-0.39	-0.06	-0.37	0.00
AOI 4	102	-0.35	-0.03	-0.36	0.00
AOI 5 (PPG 21)	47	-0.32	-0.19	-0.14	0.00
AOI 6 (PPG 6)	212	-0.76	-0.47	-0.33	0.00
AOI 7 (PPG 7)	216	-0.62	-0.33	-0.32	0.00
AOI 8 (PPG 22)	36	-0.83	-0.62	-0.24	0.00
AOI 9 (SMS A1)	23	-0.35	-0.28	-0.09	0.00
AOI 10 (PPG 2)	403	-0.81	-0.59	-0.26	0.00
AOI 11 (PPG 5)	85	-0.80	-0.52	-0.33	0.00
AOI 12 (PPG 4)	262	-1.10	-0.86	-0.27	0.00
AOI 13 (PPG 18)	52	-0.73	-0.48	-0.29	0.00
AOI 14 (PPG 16)	11	-0.63	-0.66	+0.04	0.00
AOI 15 (PPG 20)	224	-1.19	-1.00	-0.22	0.00

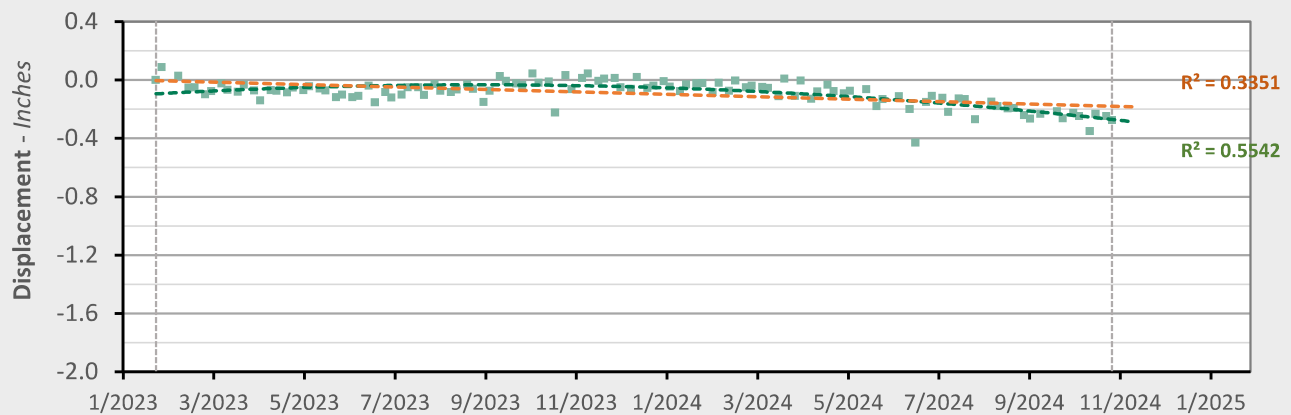


## AOI 1 (LGS 1) - Location Map



## AOI 1 (LGS 1) - Displacement Time Series

TSX/PAZ (10/27/2024) Point Count: 42



Nonlinear Trend

Linear Trend

Velocity: -0.41 in/yr  
Acceleration: -0.35 in/yr<sup>2</sup>

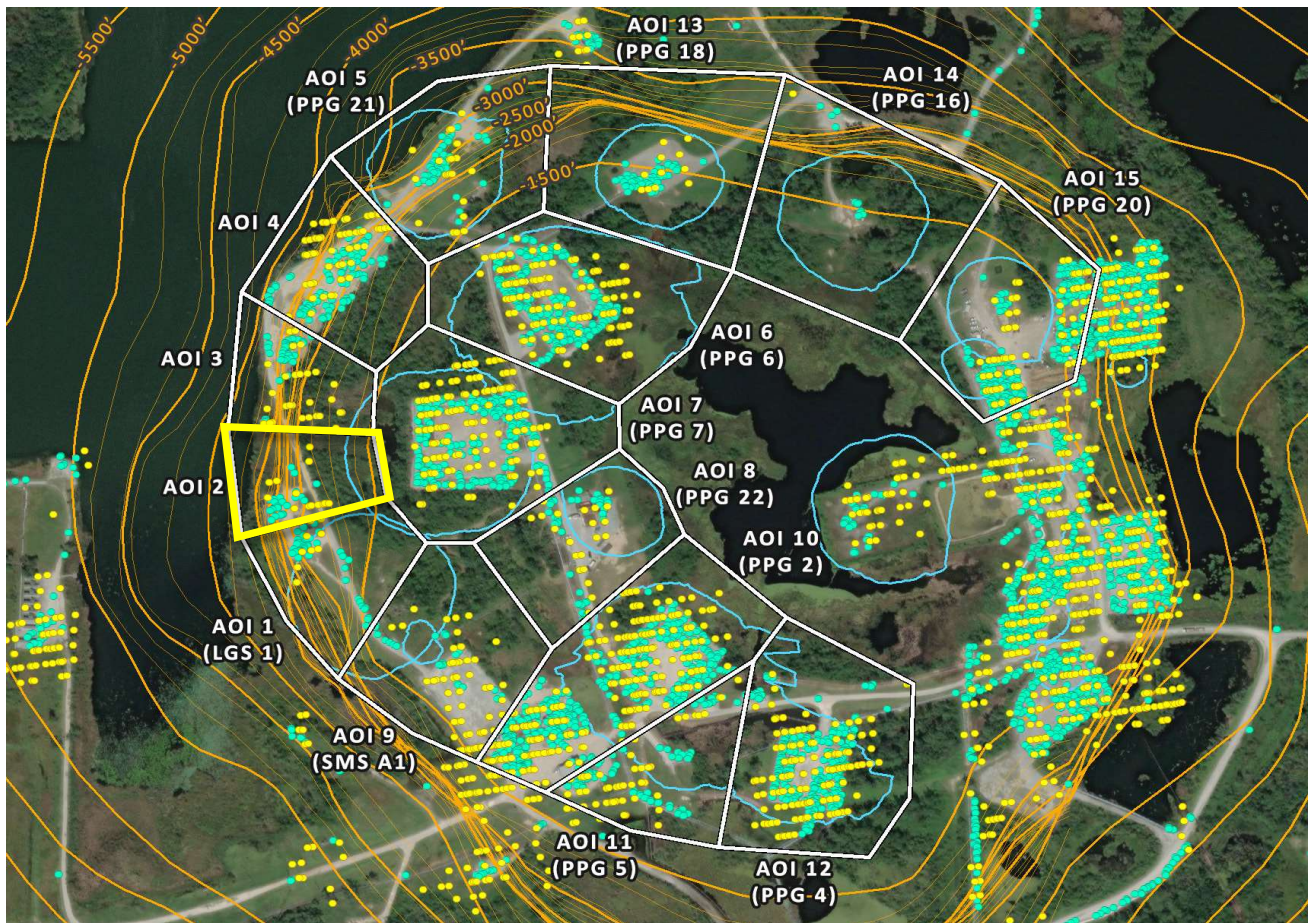
-0.10 in/yr  
0.00 in/yr<sup>2</sup>

■ LOS Displacement Measurement

--- Nonlinear Trend Line  
(Quadratic Regression)--- Linear Trend Line  
(Linear Regression)

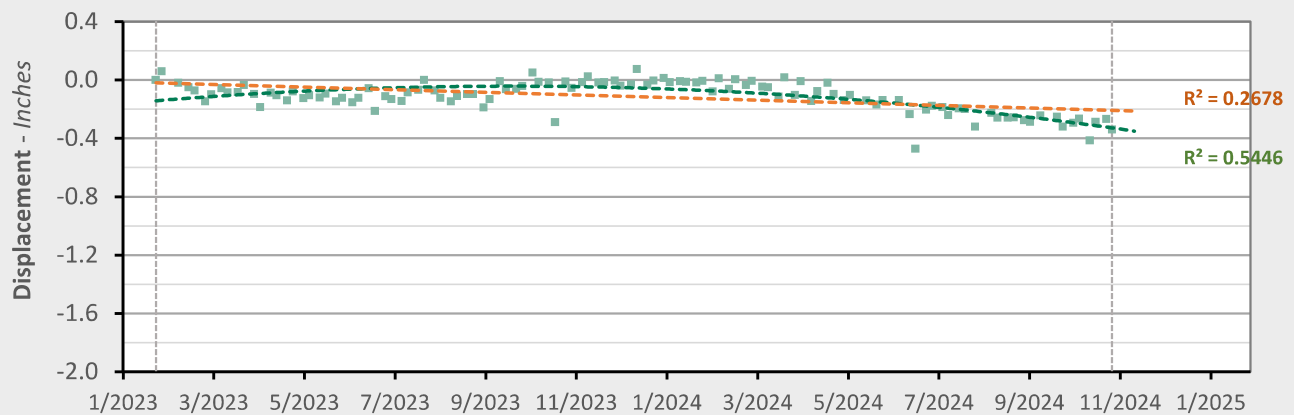


## AOI 2 - Location Map



## AOI 2 - Displacement Time Series

TSX/PAZ (10/27/2024) Point Count: 24



Nonlinear Trend

Linear Trend

Velocity: -0.52 in/yr  
Acceleration: -0.47 in/yr<sup>2</sup>

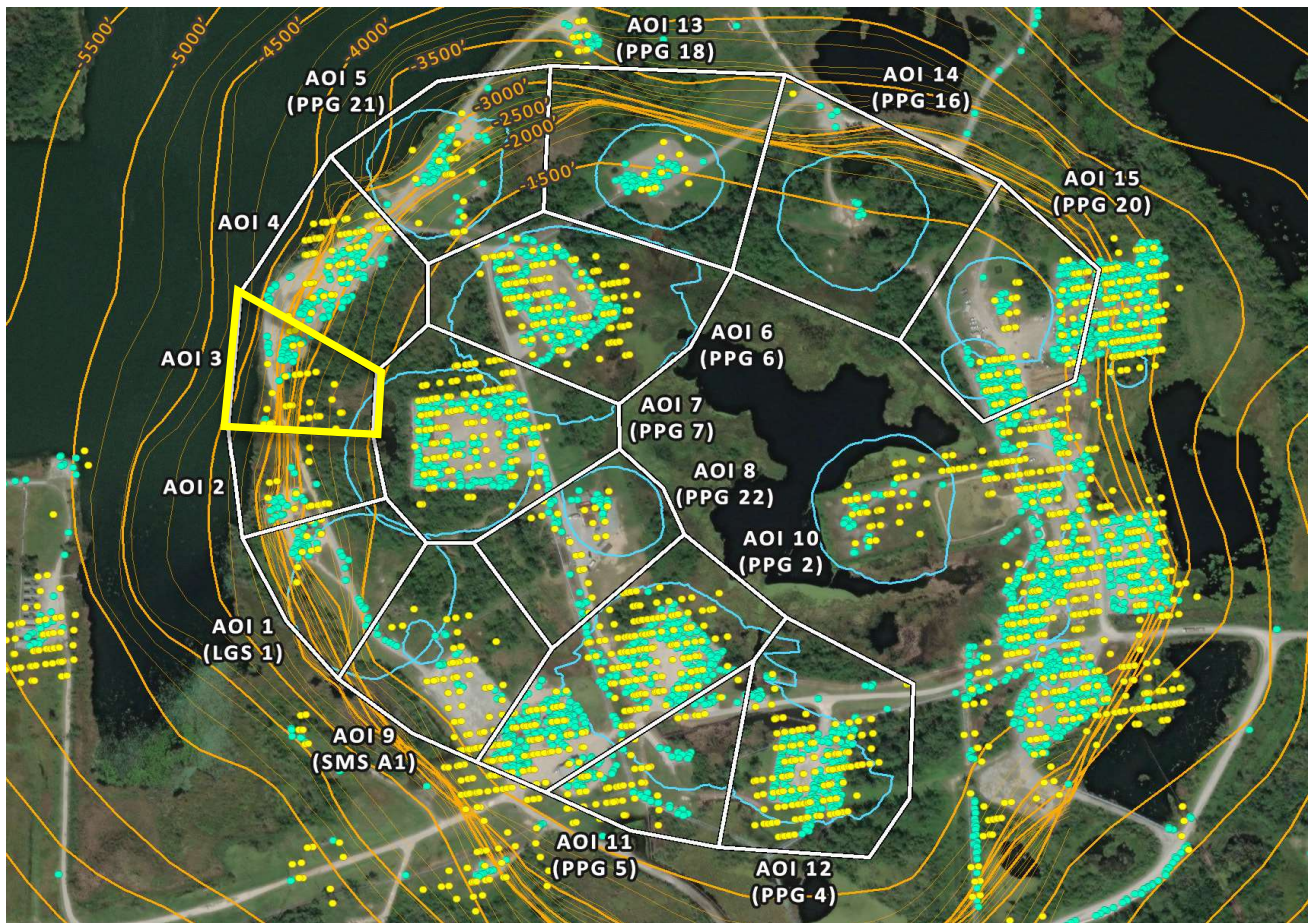
-0.11 in/yr  
0.00 in/yr<sup>2</sup>

■ LOS Displacement Measurement

--- Nonlinear Trend Line  
(Quadratic Regression)--- Linear Trend Line  
(Linear Regression)

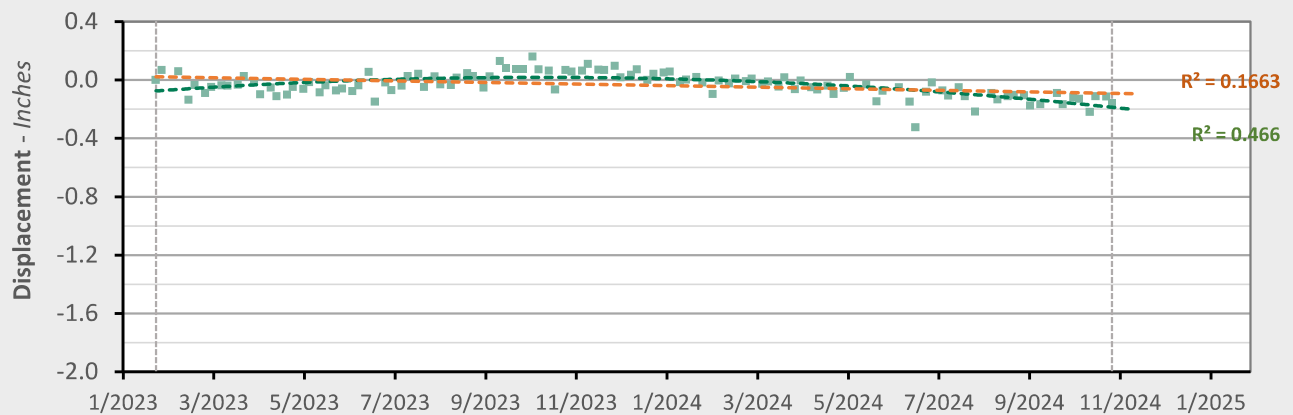


## AOI 3 - Location Map



## AOI 3 - Displacement Time Series

TSX/PAZ (10/27/2024) Point Count: 40



Nonlinear Trend

Linear Trend

Velocity: -0.39 in/yr  
Acceleration: -0.37 in/yr<sup>2</sup>

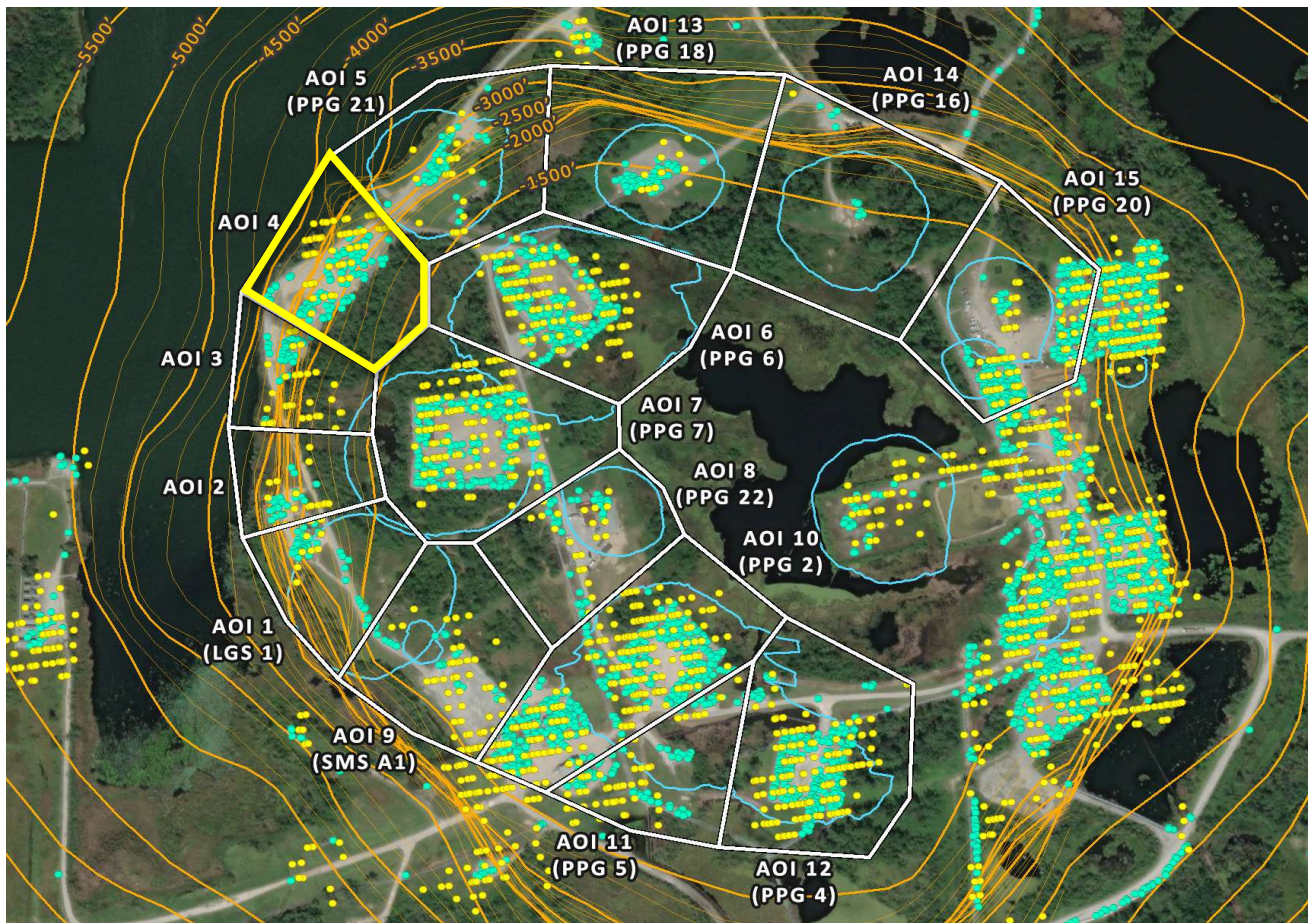
-0.06 in/yr  
0.00 in/yr<sup>2</sup>

■ LOS Displacement Measurement

--- Nonlinear Trend Line  
(Quadratic Regression)--- Linear Trend Line  
(Linear Regression)

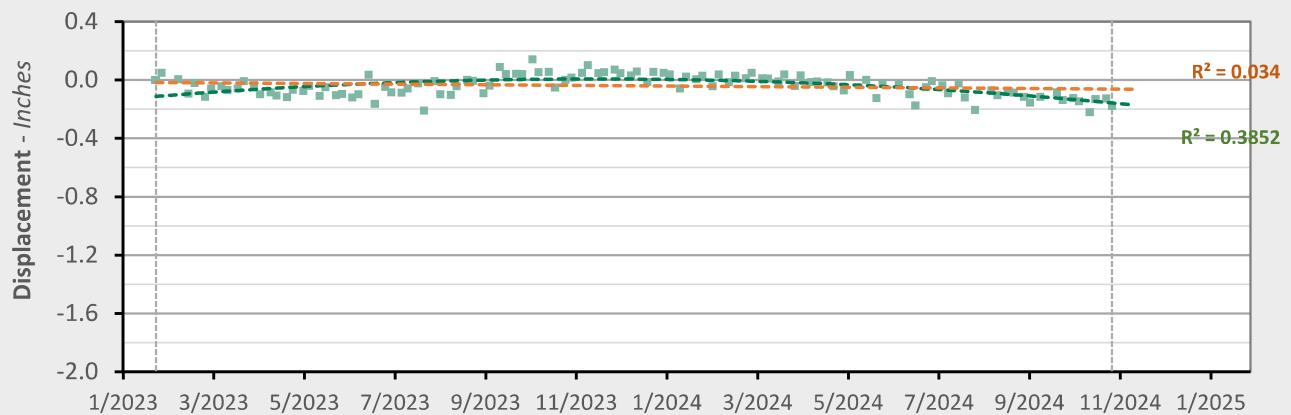


## AOI 4 - Location Map



## AOI 4 - Displacement Time Series

TSX/PAZ (10/27/2024) Point Count: 102



Nonlinear Trend

Linear Trend

Velocity: -0.35 in/yr  
Acceleration: -0.36 in/yr<sup>2</sup>

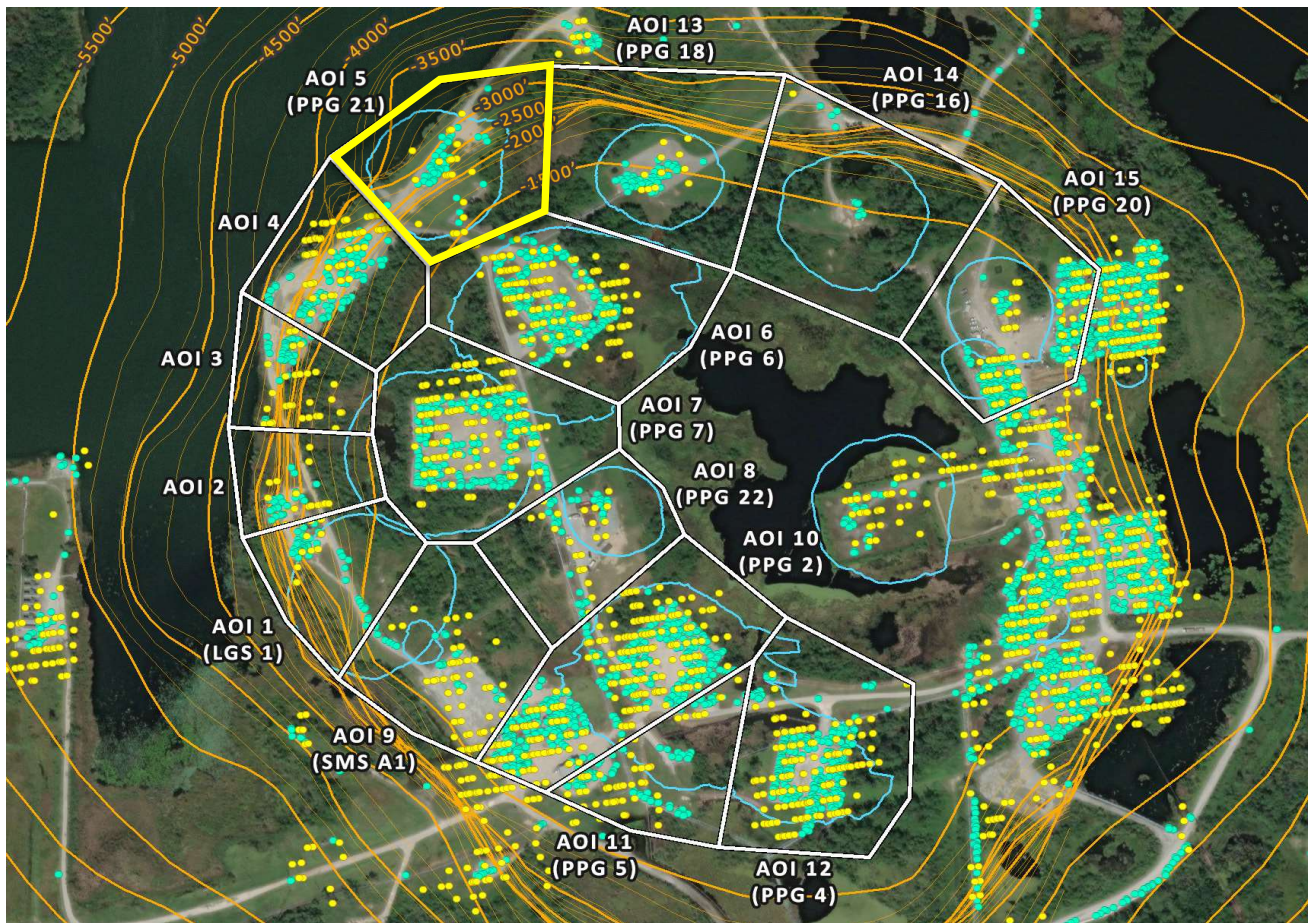
-0.03 in/yr  
0.00 in/yr<sup>2</sup>

■ LOS Displacement Measurement

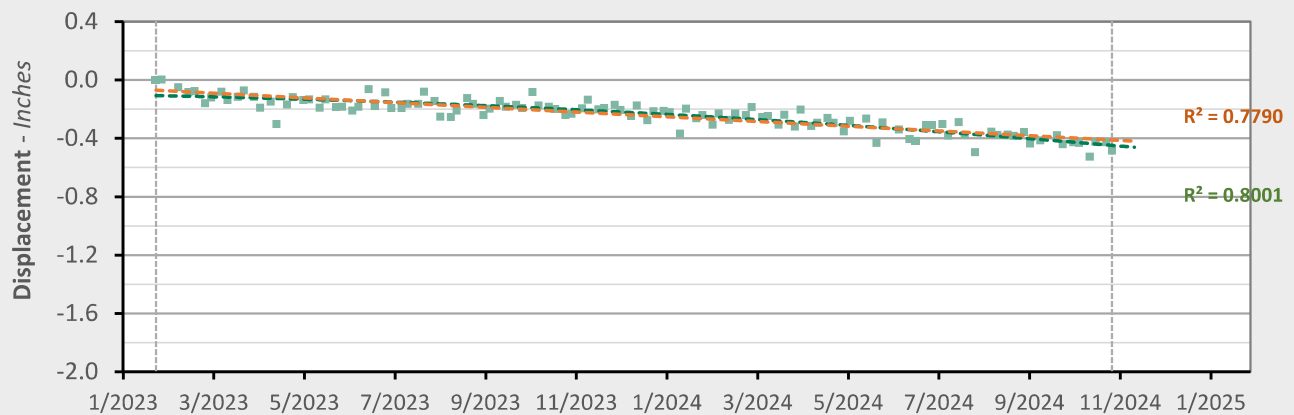
--- Nonlinear Trend Line  
(Quadratic Regression)--- Linear Trend Line  
(Linear Regression)



## AOI 5 (PPG 21) - Location Map



## AOI 5 (PPG 21) - Displacement Time Series TSX/PAZ (10/27/2024) Point Count: 47



	Nonlinear Trend	Linear Trend
Velocity:	-0.32 in/yr	-0.19 in/yr
Acceleration:	-0.14 in/yr <sup>2</sup>	0.00 in/yr <sup>2</sup>

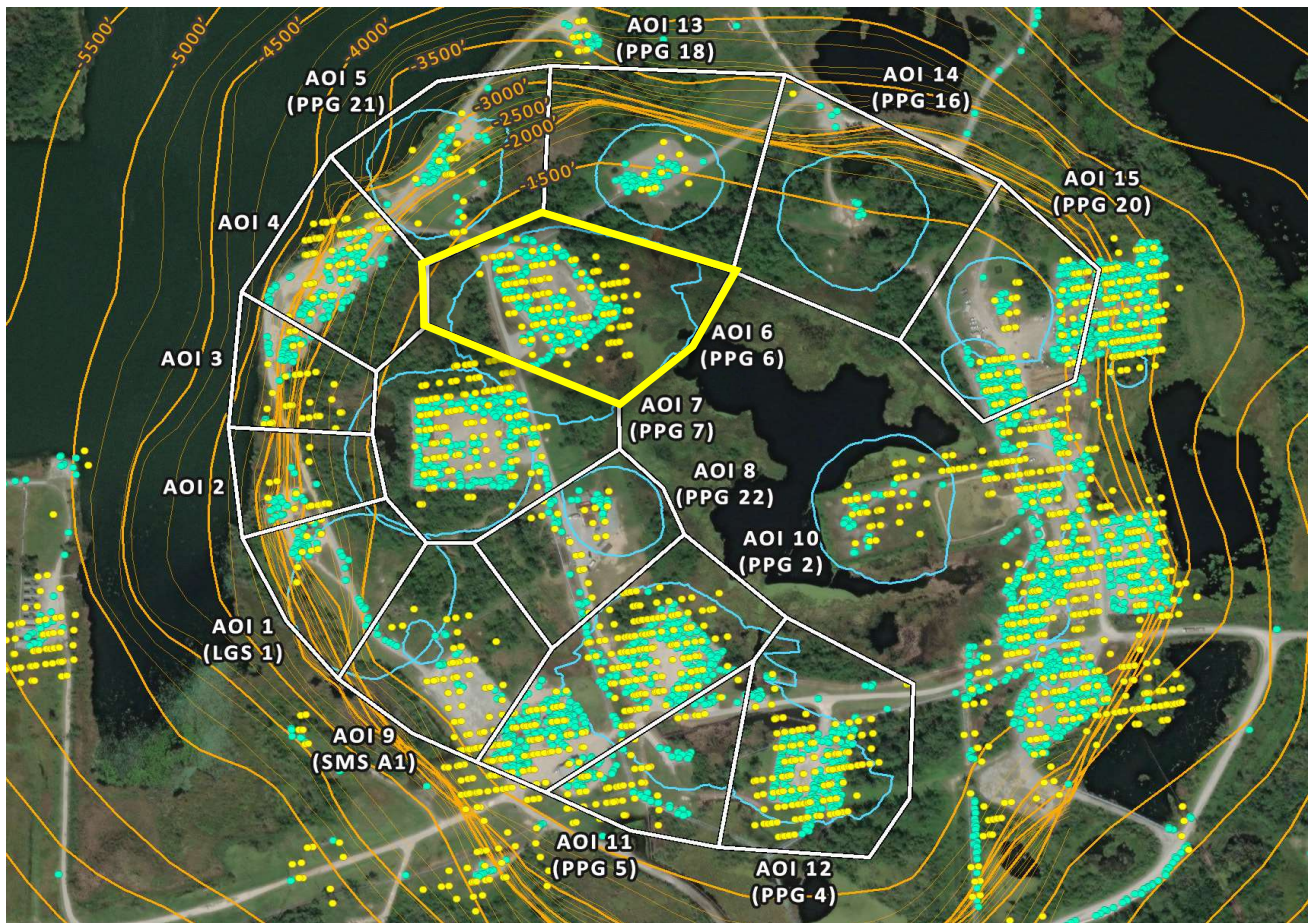
■ LOS Displacement Measurement

--- Nonlinear Trend Line  
(Quadratic Regression)

--- Linear Trend Line  
(Linear Regression)

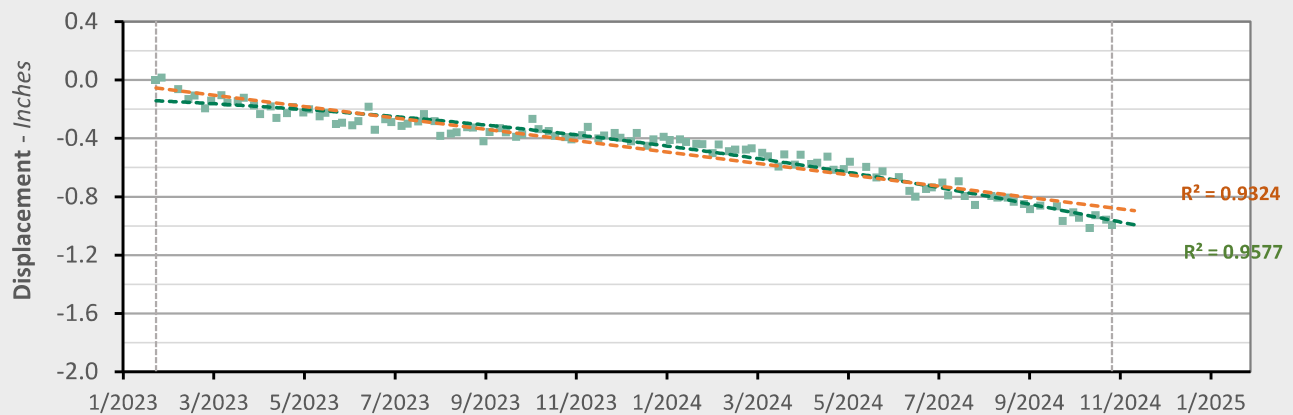


## AOI 6 (PPG 6) - Location Map



## AOI 6 (PPG 6) - Displacement Time Series

TSX/PAZ (10/27/2024) Point Count: 212



Nonlinear Trend

Linear Trend

Velocity: -0.76 in/yr  
Acceleration: -0.33 in/yr<sup>2</sup>

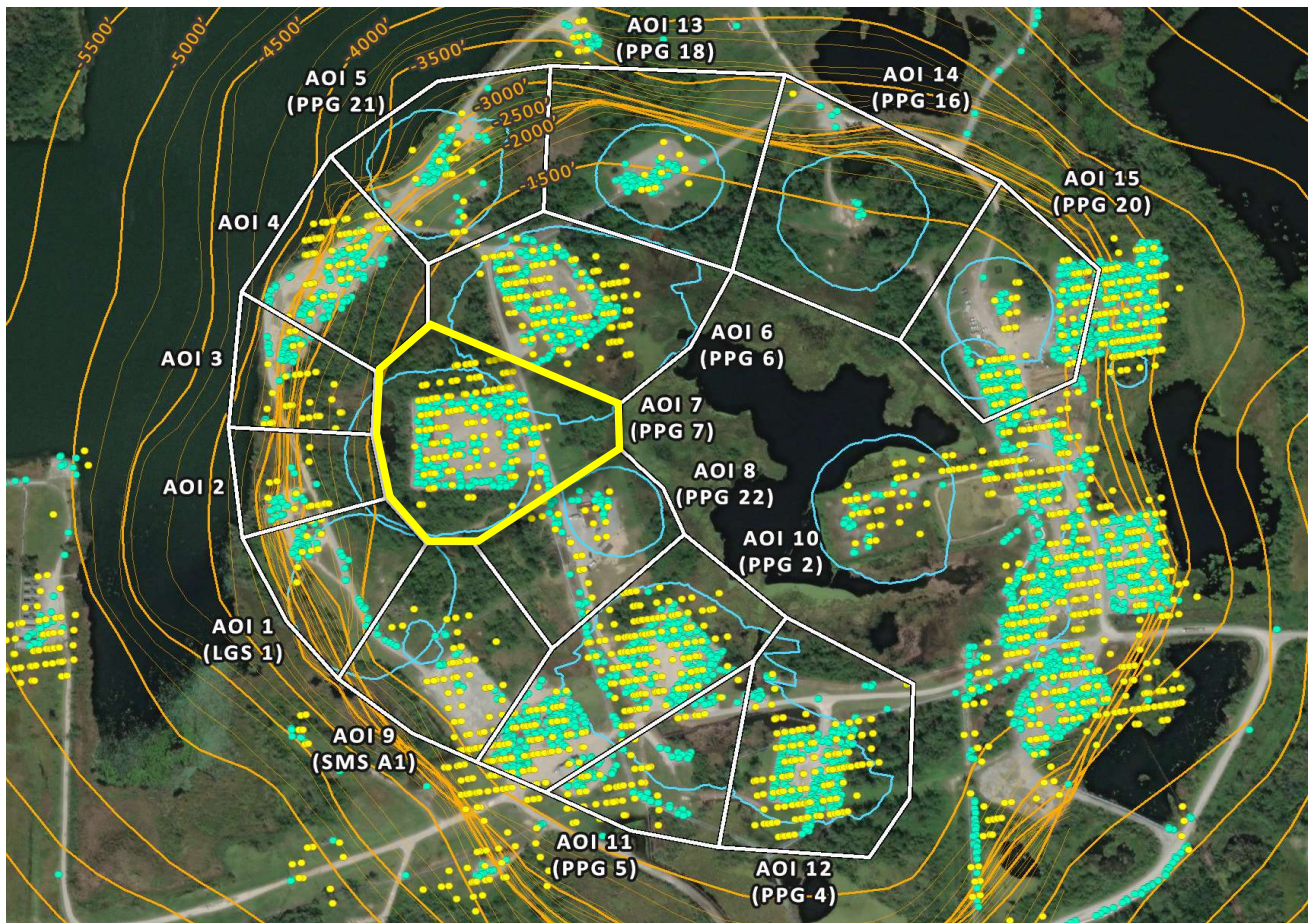
-0.47 in/yr  
0.00 in/yr<sup>2</sup>

■ LOS Displacement Measurement

--- Nonlinear Trend Line  
(Quadratic Regression)--- Linear Trend Line  
(Linear Regression)

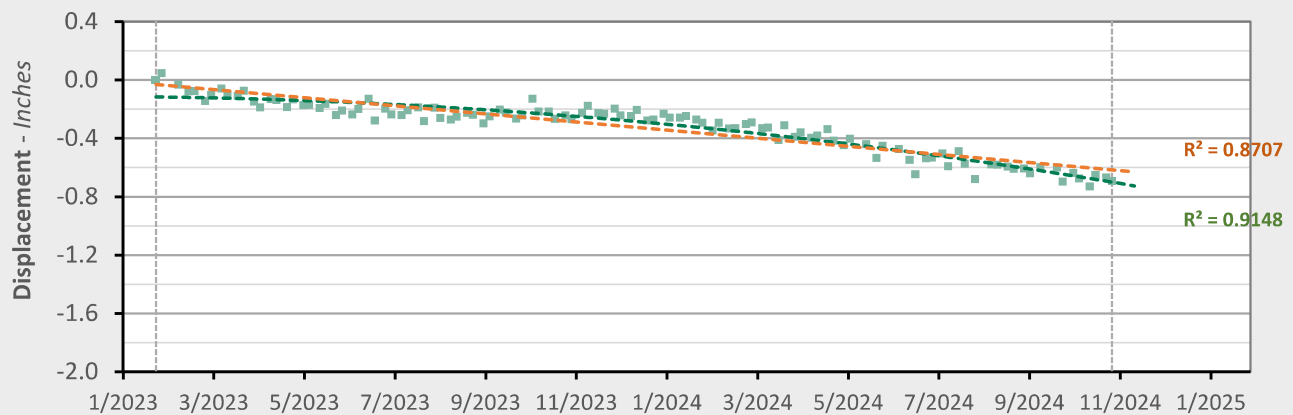


### AOI 7 (PPG 7) - Location Map



### AOI 7 (PPG 7) - Displacement Time Series

TSX/PAZ (10/27/2024) Point Count: 216



Nonlinear Trend

Linear Trend

Velocity: -0.62 in/yr  
Acceleration: -0.32 in/yr<sup>2</sup>

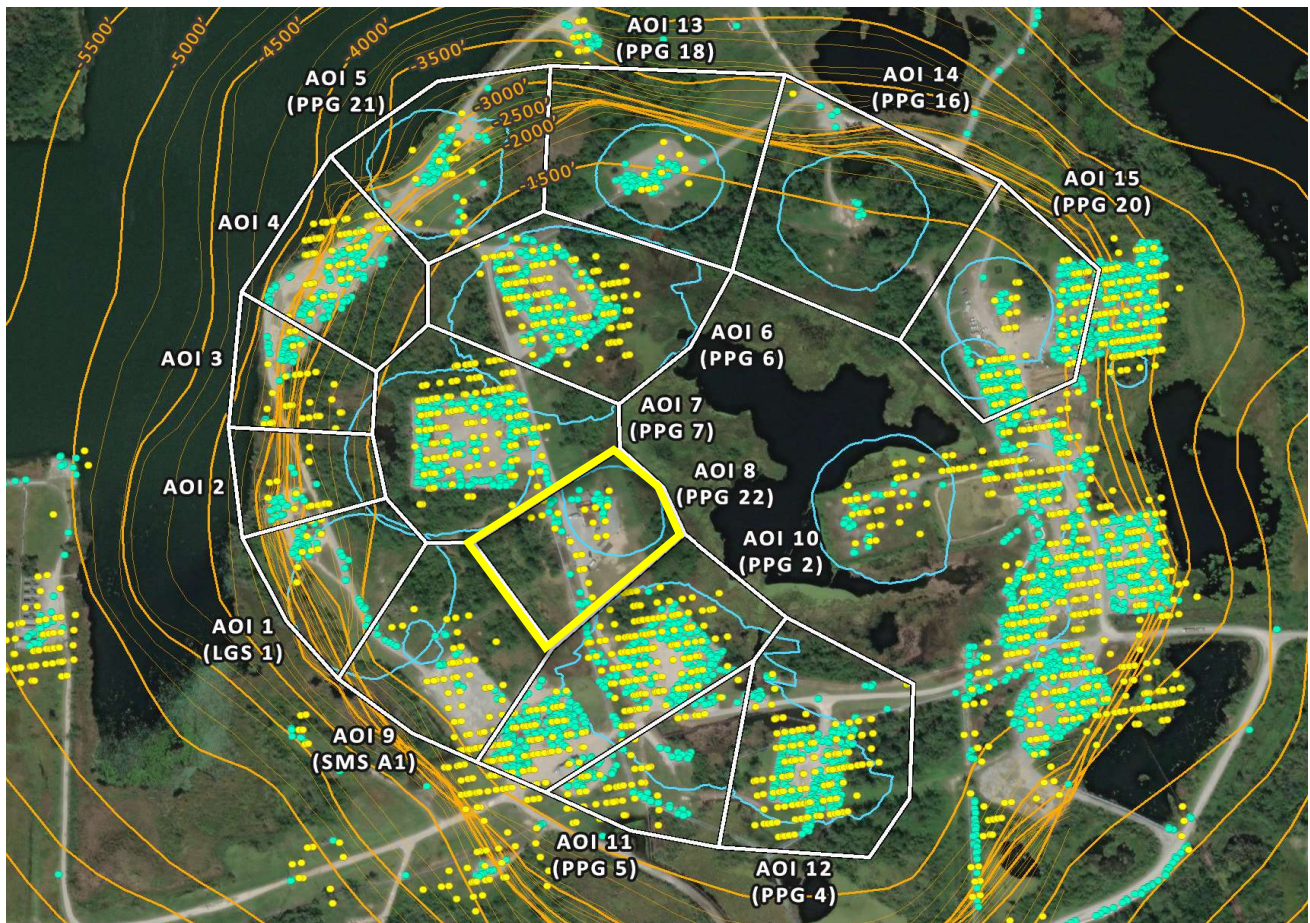
-0.33 in/yr  
0.00 in/yr<sup>2</sup>

■ LOS Displacement Measurement

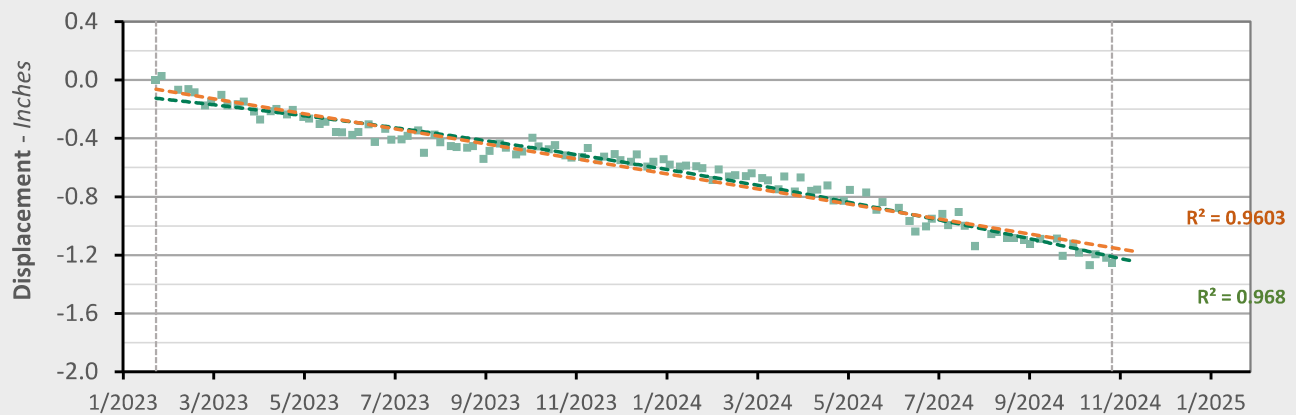
--- Nonlinear Trend Line  
(Quadratic Regression)--- Linear Trend Line  
(Linear Regression)



## AOI 8 (PPG 22) - Location Map



## AOI 8 (PPG 22) - Displacement Time Series TSX/PAZ (10/27/2024) Point Count: 36



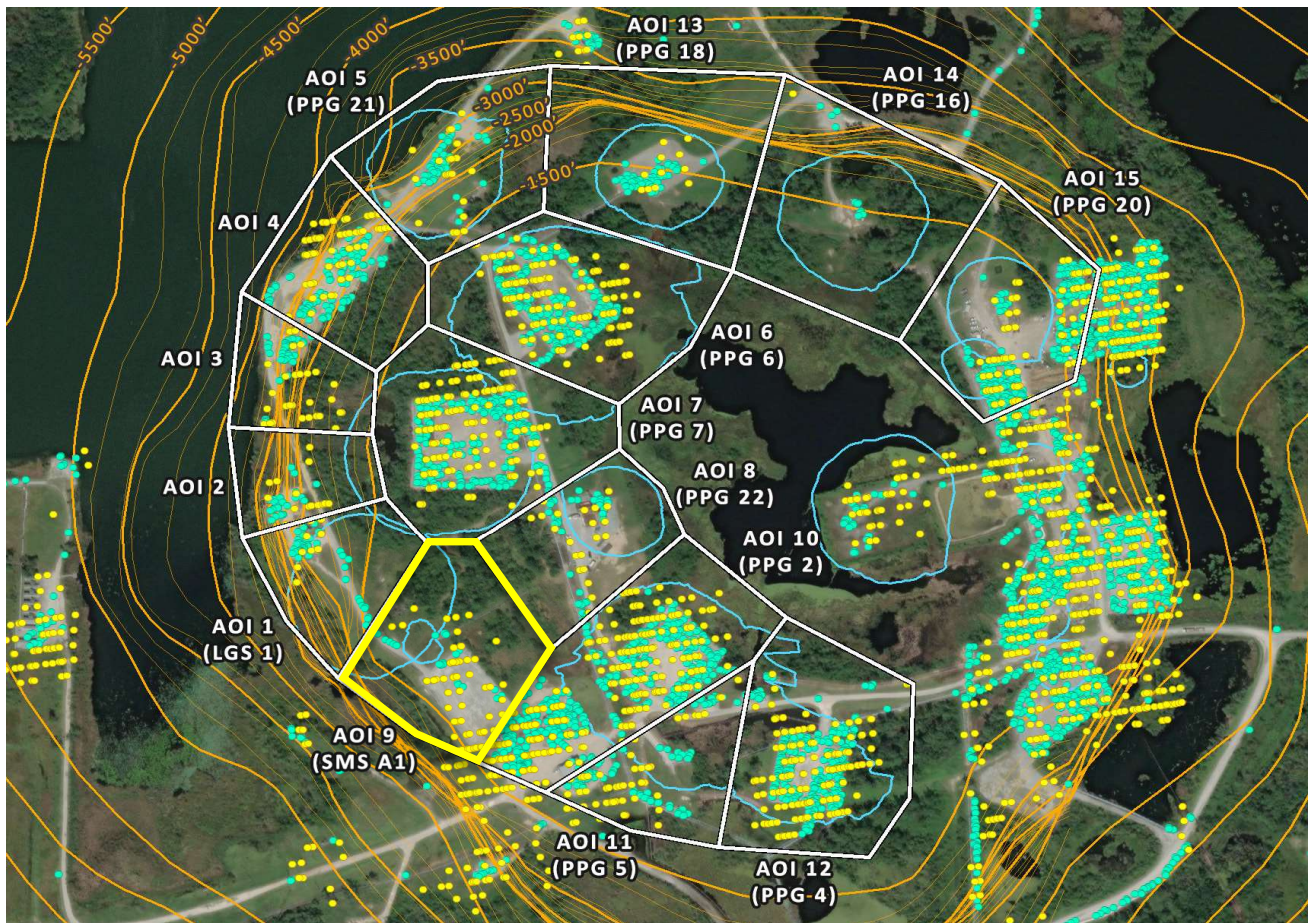
	Nonlinear Trend	Linear Trend
Velocity:	-0.83 in/yr	-0.62 in/yr
Acceleration:	-0.24 in/yr <sup>2</sup>	0.00 in/yr <sup>2</sup>

■ LOS Displacement Measurement

--- Nonlinear Trend Line  
(Quadratic Regression)--- Linear Trend Line  
(Linear Regression)

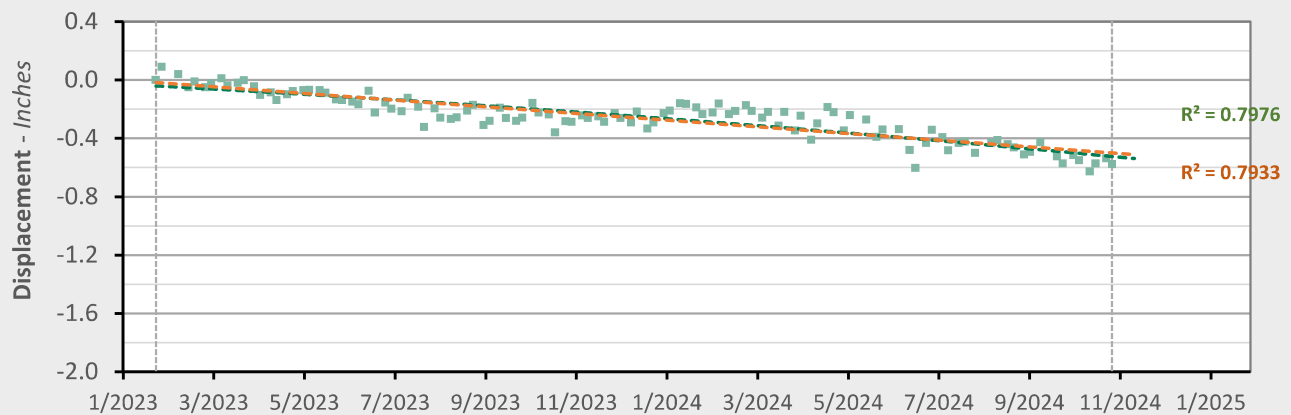


### AOI 9 (PPG A1) - Location Map



### AOI 9 (SMS A1) - Displacement Time Series

TSX/PAZ (10/27/2024) Point Count: 23



Nonlinear Trend

Linear Trend

Velocity: -0.35 in/yr

-0.28 in/yr

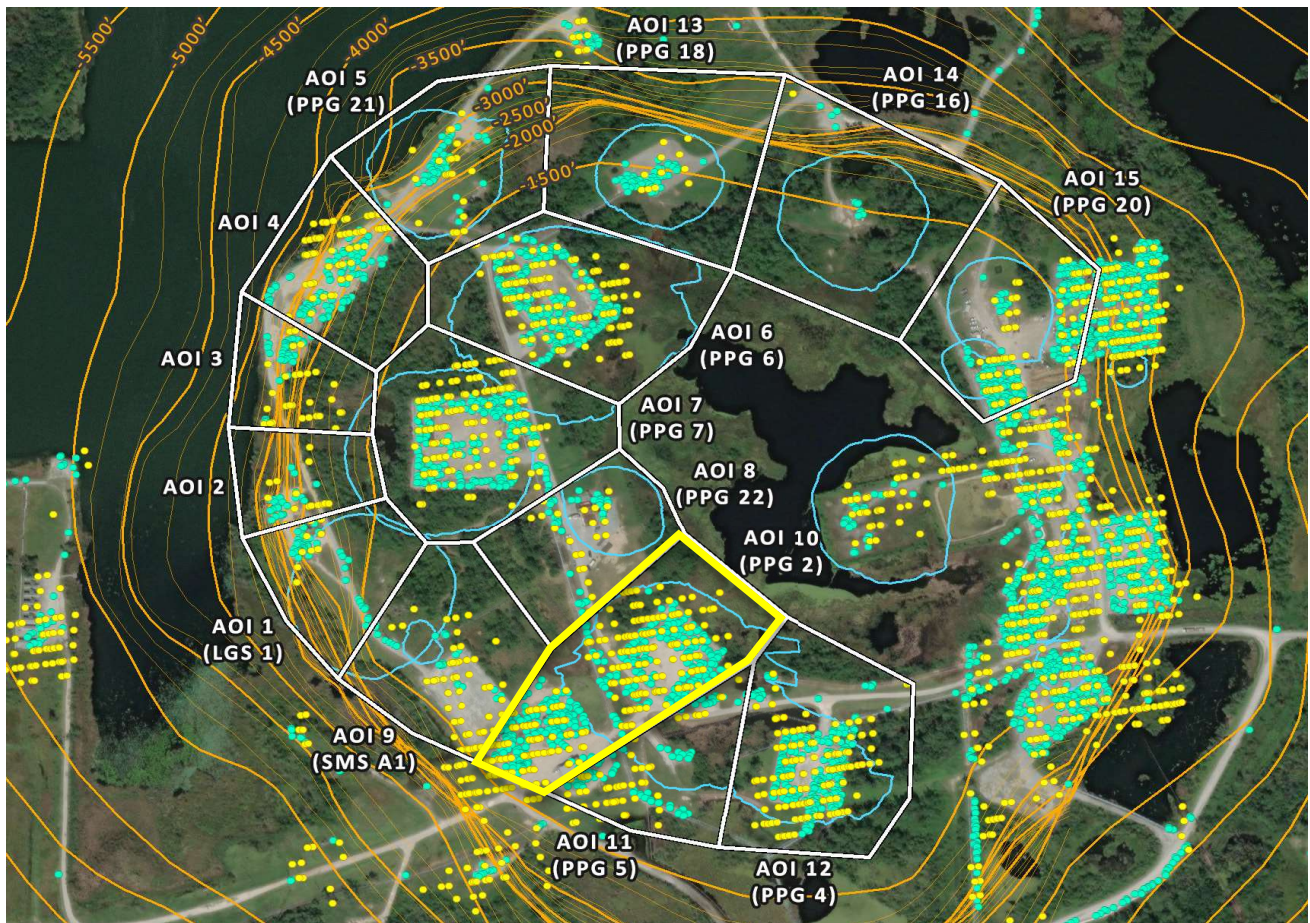
Acceleration: -0.09 in/yr<sup>2</sup>0.00 in/yr<sup>2</sup>

■ LOS Displacement Measurement

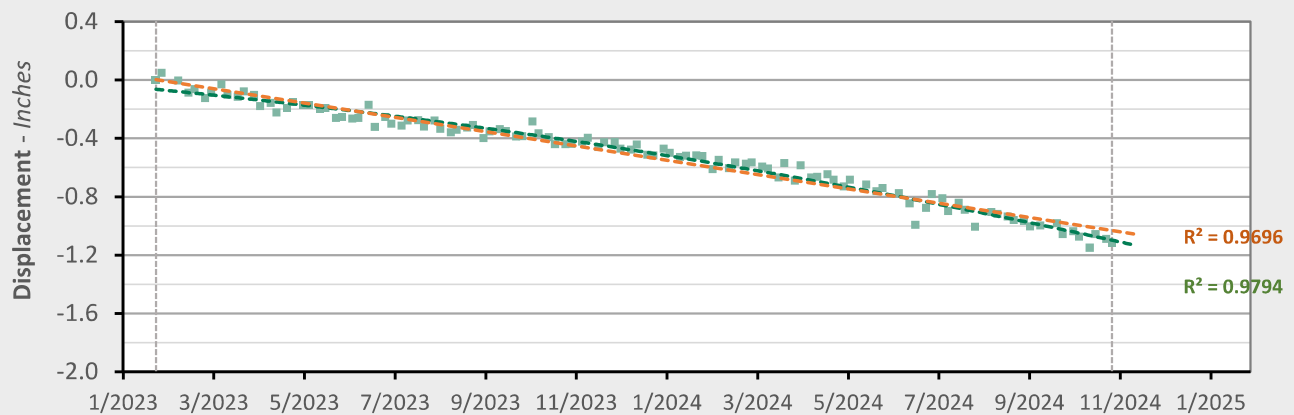
--- Nonlinear Trend Line  
(Quadratic Regression)--- Linear Trend Line  
(Linear Regression)



## AOI 10 (PPG 2) - Location Map



## AOI 10 (PPG 2) - Displacement Time Series TSX/PAZ (10/27/2024) Point Count: 403



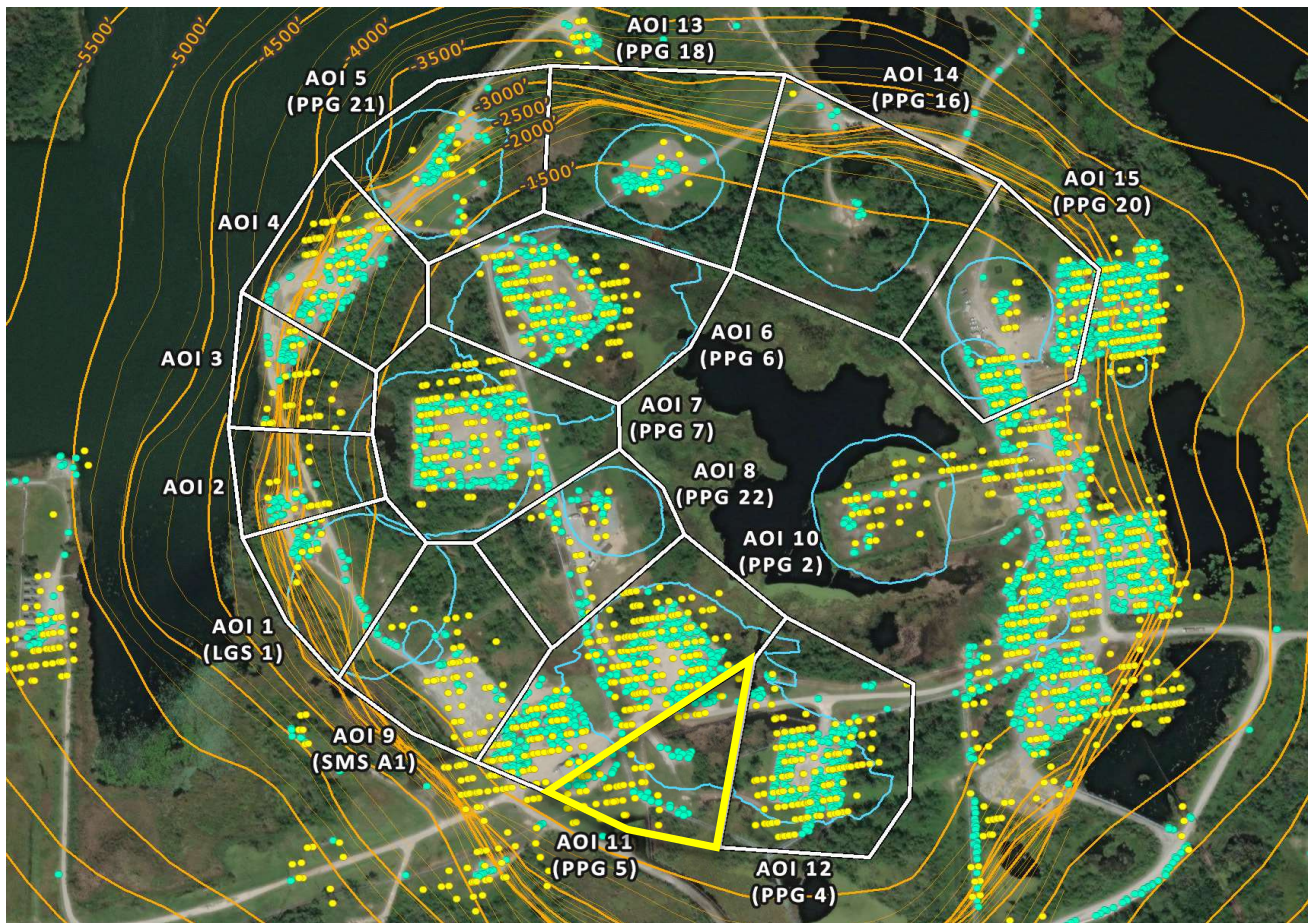
	Nonlinear Trend	Linear Trend
Velocity:	-0.81 in/yr	-0.59 in/yr
Acceleration:	-0.26 in/yr <sup>2</sup>	0.00 in/yr <sup>2</sup>

■ LOS Displacement Measurement

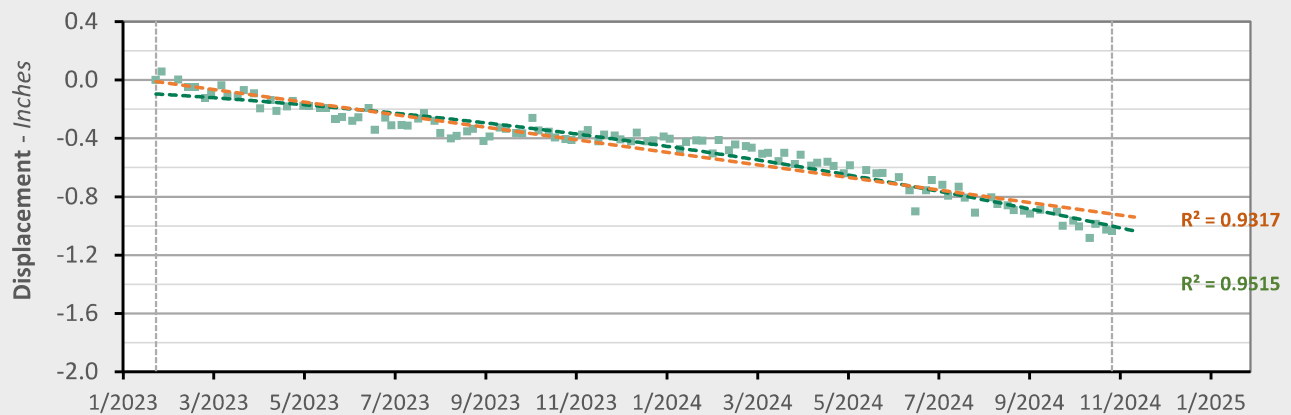
--- Nonlinear Trend Line  
(Quadratic Regression)--- Linear Trend Line  
(Linear Regression)



## AOI 11 (PPG 5) - Location Map



## AOI 11 (PPG 5) - Displacement Time Series TSX/PAZ (10/27/2024) Point Count: 85



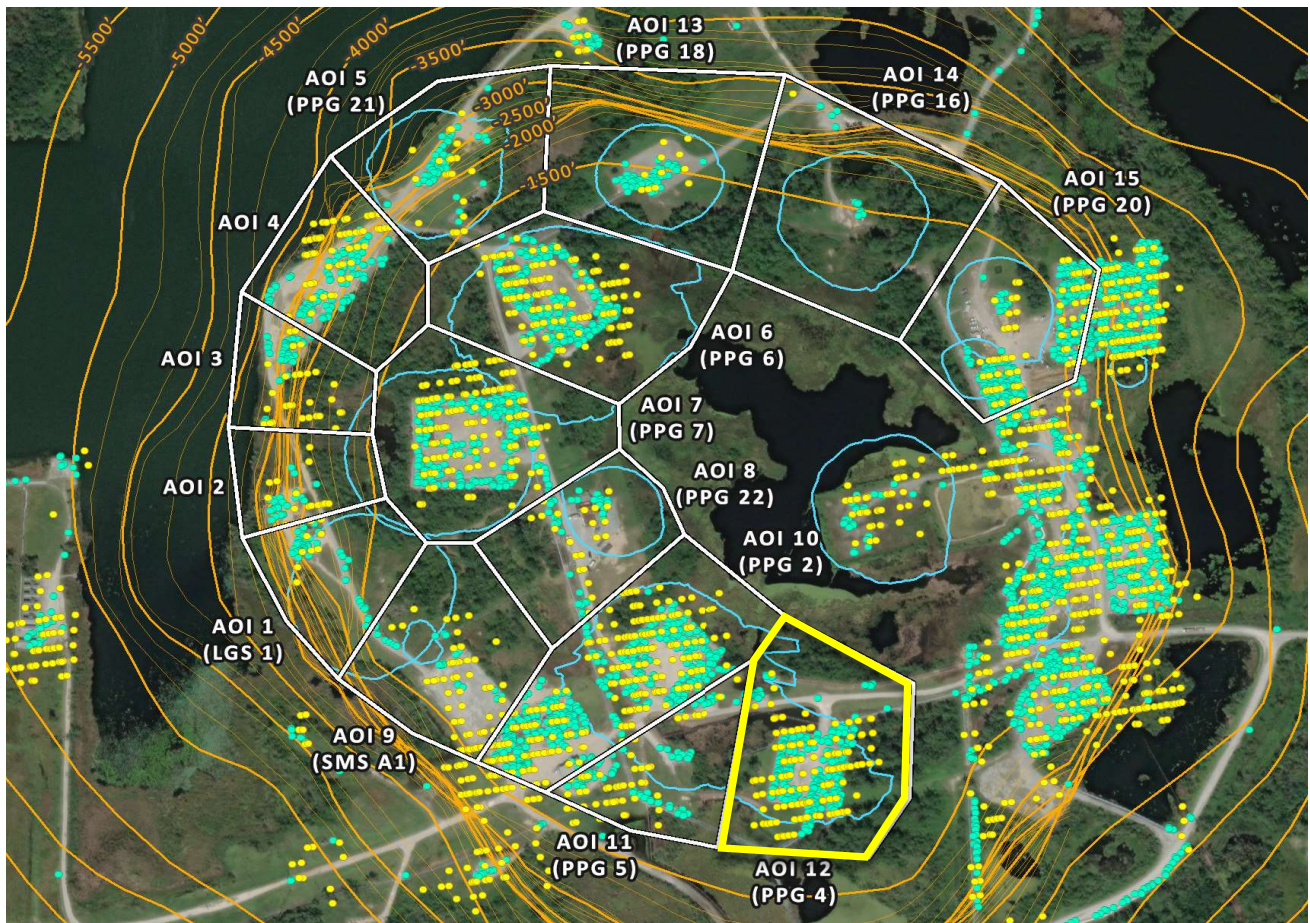
	Nonlinear Trend	Linear Trend
Velocity:	-0.80 in/yr	-0.52 in/yr
Acceleration:	-0.33 in/yr <sup>2</sup>	0.00 in/yr <sup>2</sup>

■ LOS Displacement Measurement

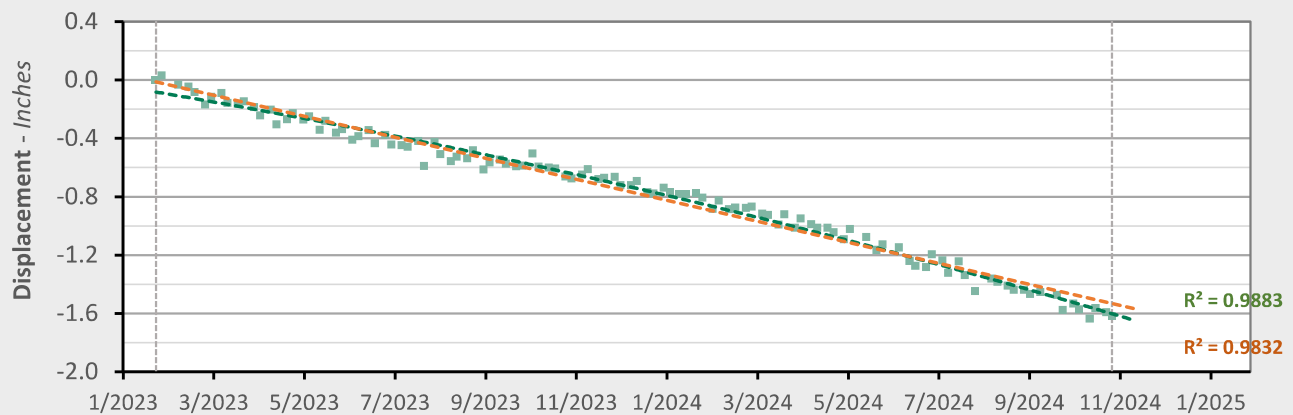
--- Nonlinear Trend Line  
(Quadratic Regression)--- Linear Trend Line  
(Linear Regression)



## AOI 12 (PPG 4) - Location Map



## AOI 12 (PPG 4) - Displacement Time Series TSX/PAZ (10/27/2024) Point Count: 262



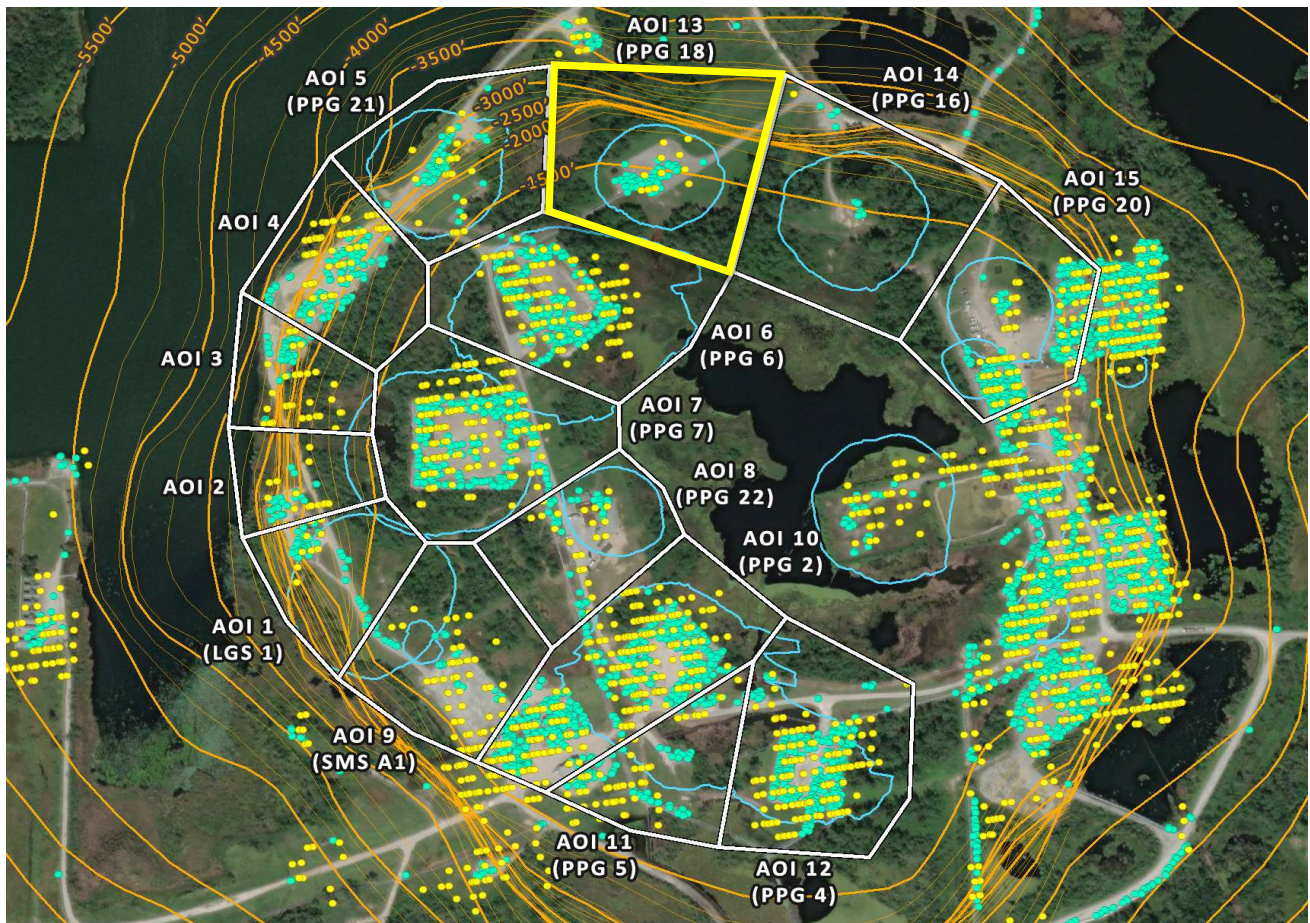
	Nonlinear Trend	Linear Trend
Velocity:	-1.10 in/yr	-0.86 in/yr
Acceleration:	-0.27 in/yr <sup>2</sup>	0.00 in/yr <sup>2</sup>

■ LOS Displacement Measurement

--- Nonlinear Trend Line  
(Quadratic Regression)--- Linear Trend Line  
(Linear Regression)



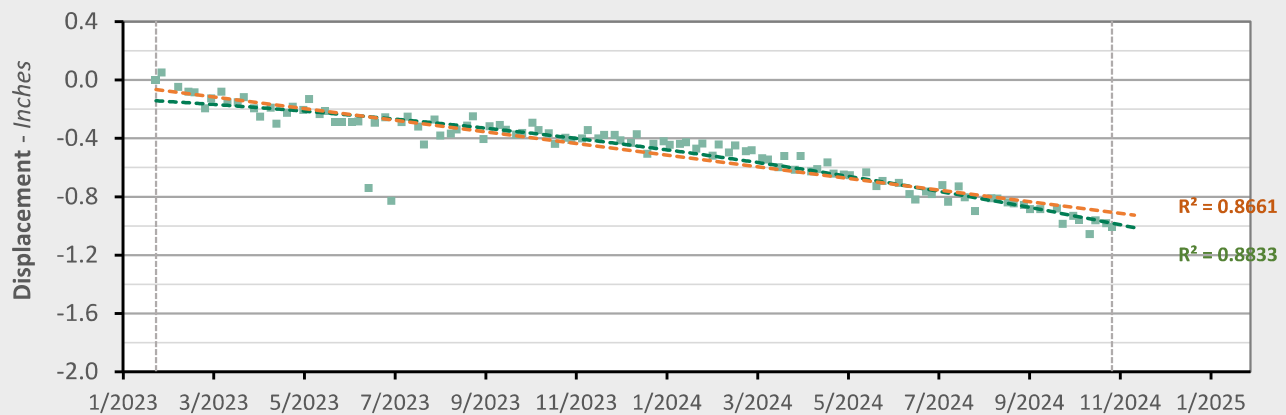
## AOI 13 (PPG 18) - Location Map



## AOI 13 (PPG 18) - Displacement Time Series

SX/PAZ (10/27/2024) Point Count:

52



Nonlinear Trend

Linear Trend

Velocity: -0.73 in/yr  
Acceleration: -0.29 in/yr<sup>2</sup>

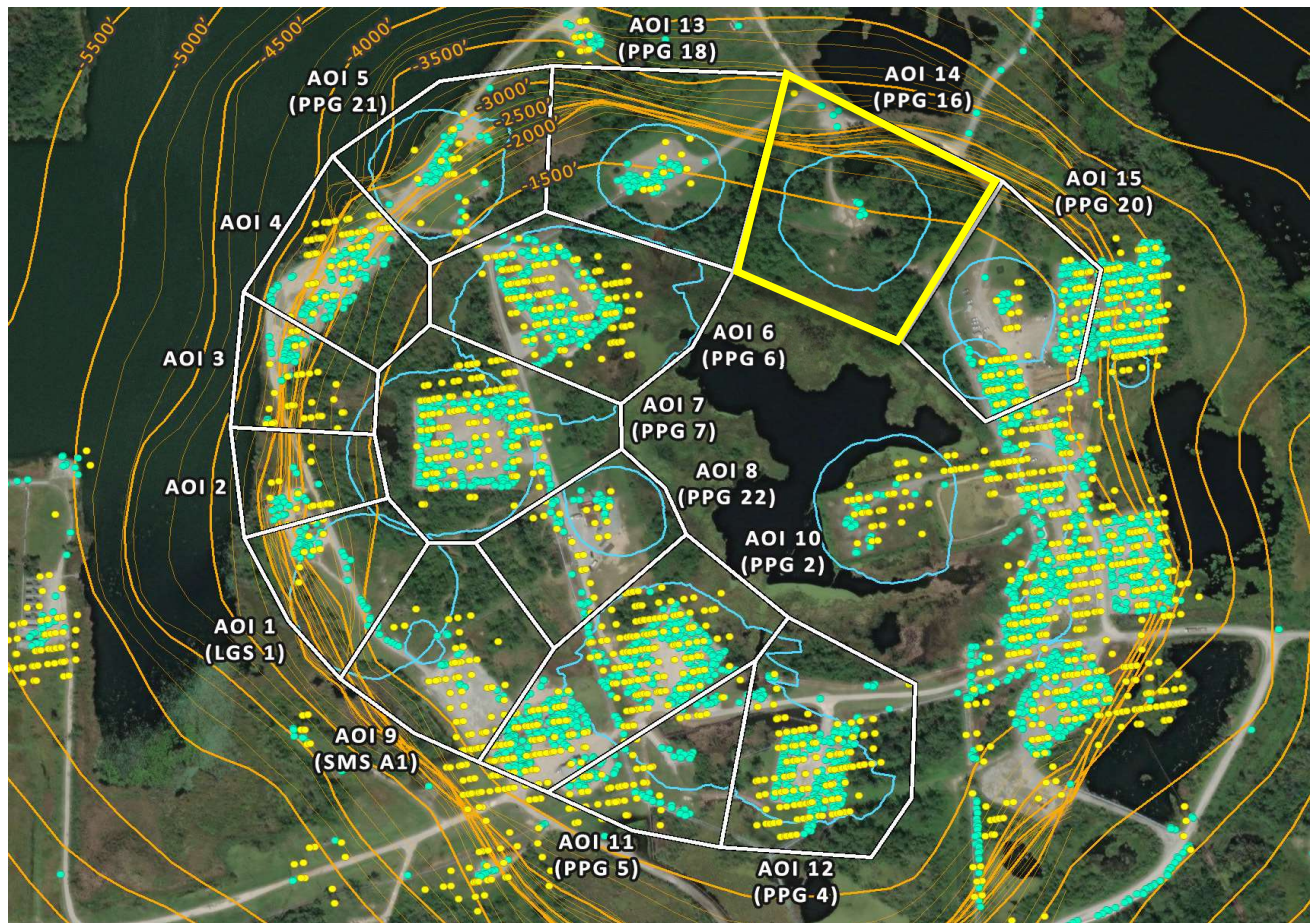
-0.48 in/yr  
0.00 in/yr<sup>2</sup>

■ LOS Displacement Measurement

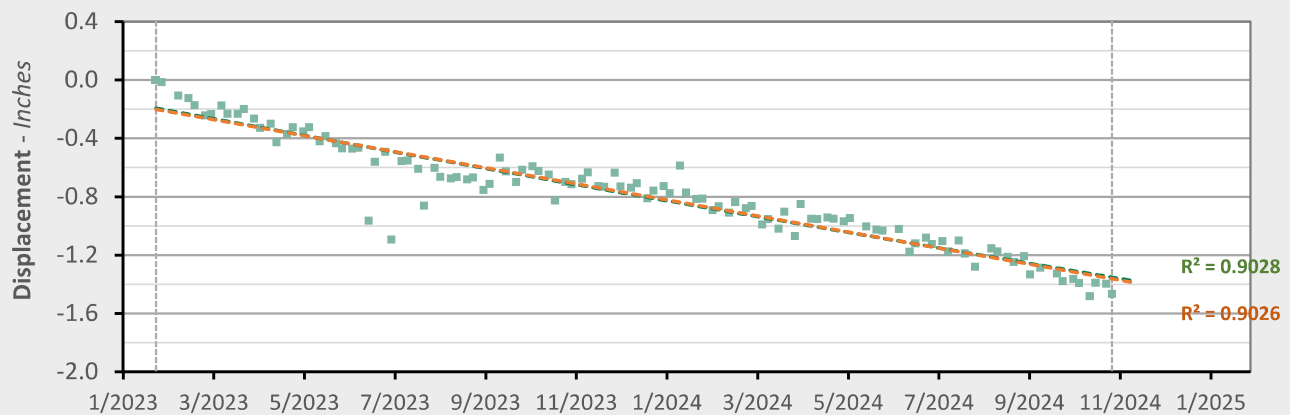
--- Nonlinear Trend Line  
(Quadratic Regression)--- Linear Trend Line  
(Linear Regression)



### AOI 14 (PPG 16) - Location Map



### AOI 14 (PPG 16) - Displacement Time Series TSX/PAZ (10/27/2024) Point Count: 11



	Nonlinear Trend	Linear Trend
Velocity:	-0.63 in/yr	-0.66 in/yr
Acceleration:	+0.04 in/yr <sup>2</sup>	0.00 in/yr <sup>2</sup>

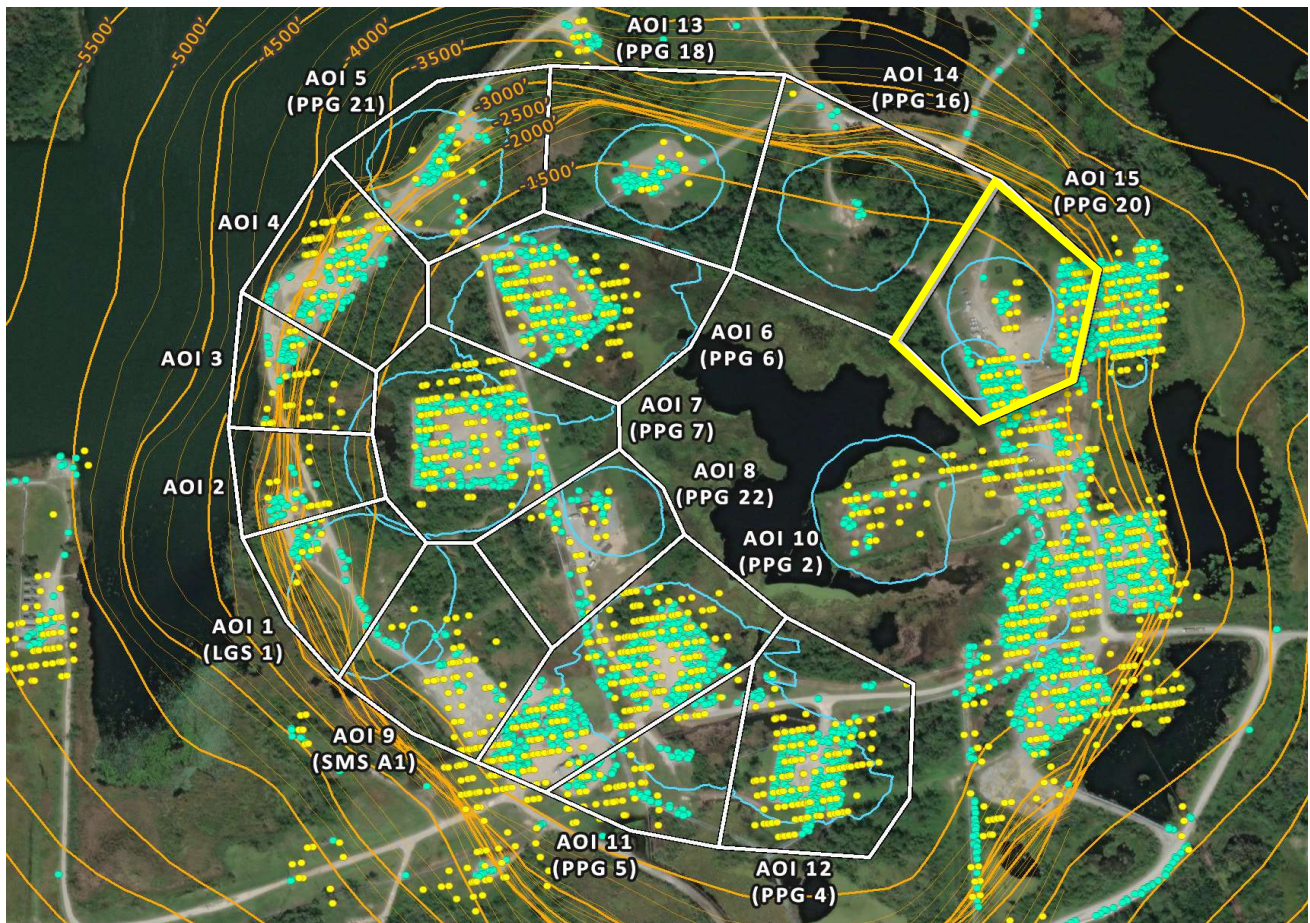
■ LOS Displacement Measurement

--- Nonlinear Trend Line  
(Quadratic Regression)

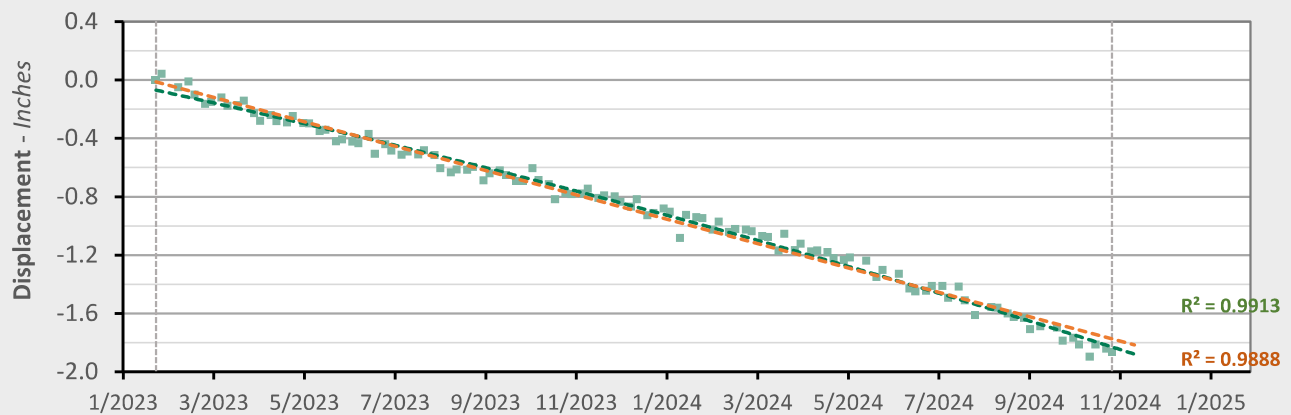
--- Linear Trend Line  
(Linear Regression)



## AOI 15 (PPG 20) - Location Map



## AOI 15 (PPG 20) - Displacement Time Series SX/PAZ (10/27/2024) Point Count: 224



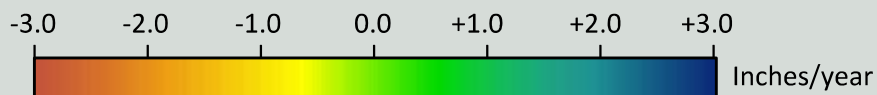
	Nonlinear Trend	Linear Trend
Velocity:	-1.19 in/yr	-1.00 in/yr
Acceleration:	-0.22 in/yr <sup>2</sup>	0.00 in/yr <sup>2</sup>

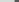
■ LOS Displacement Measurement

--- Nonlinear Trend Line  
(Quadratic Regression)--- Linear Trend Line  
(Linear Regression)



As of date: 10/27/2024



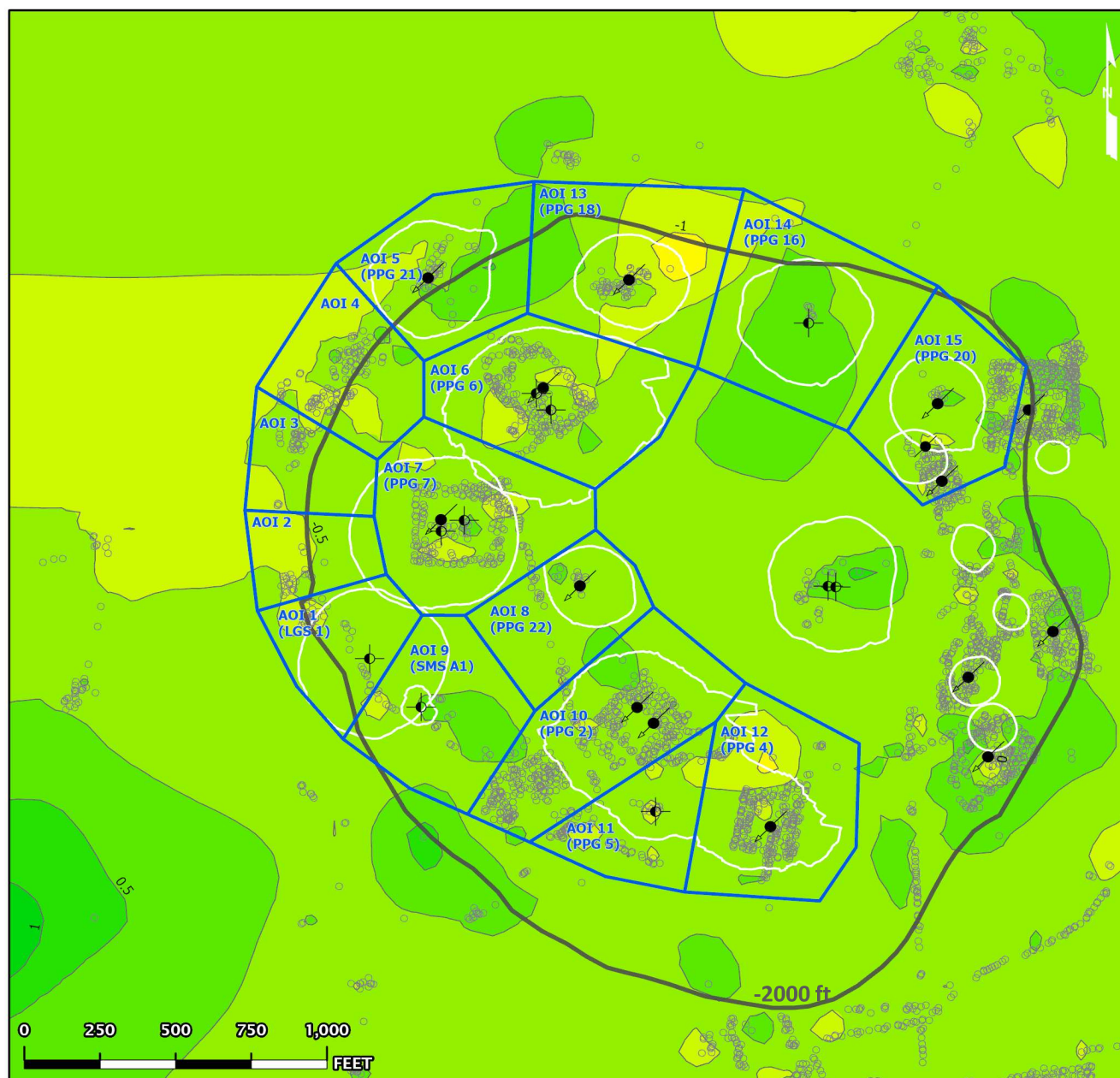
 Top of Dome (-2000 ft Contour)

09 - Active - Injection      29 - Dry and Plugged

## TSX/PAZ Data (01/24/2023 - 10/27/2024)

## Nonlinear Acceleration Contours

Date range: 01/24/2023 - 10/27/2024

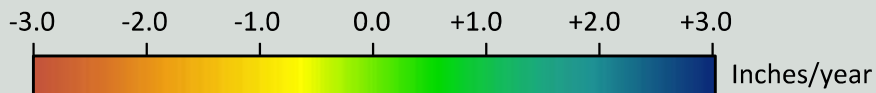
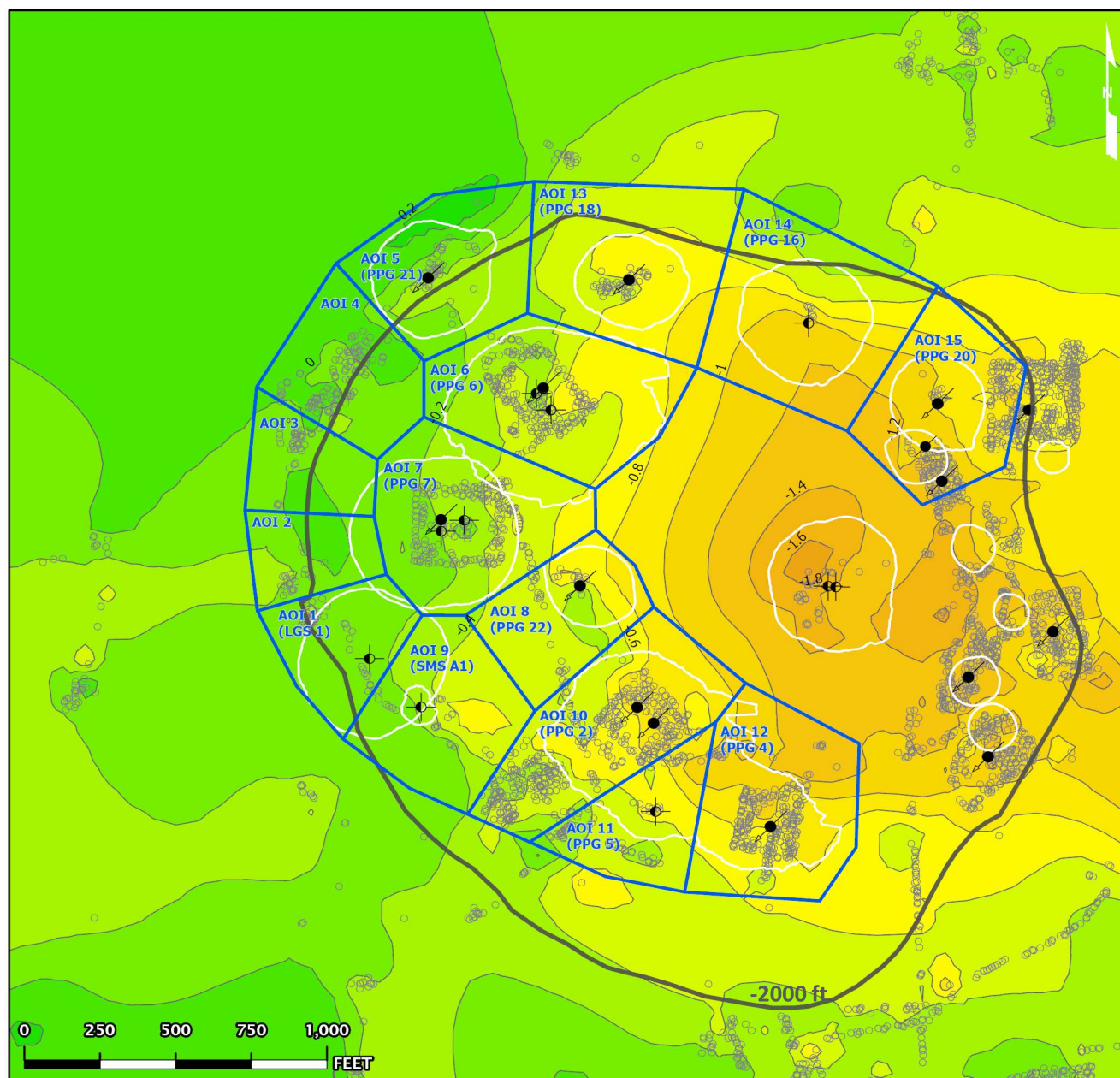




## TSX/PAZ Data (01/24/2023 - 10/27/2024)

## Linear Velocity Contours

Date range: 01/24/2023 - 10/27/2024



AOI Boundary    InSAR LOS Measurement Point    Contour (0.2)  
Historical Cavern Extent    Top of Dome (-2000 ft Contour)

## Cavern Well Surface Locations

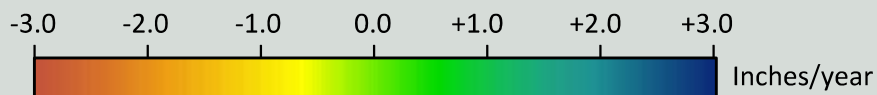
09 - Active - Injection    29 - Dry and Plugged



## TSX/PAZ Data (01/24/2023 - 10/27/2024)

## Nonlinear Velocity Data Points

As of date: 10/27/2024



- AOI Boundary
- InSAR LOS Measurement Point
- Historical Cavern Extent
- Top of Dome (-2000 ft Contour)

Cavern Well Surface Locations

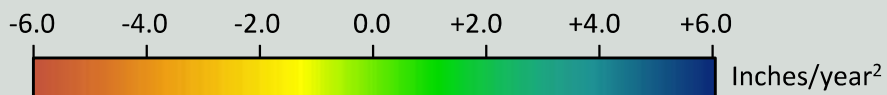
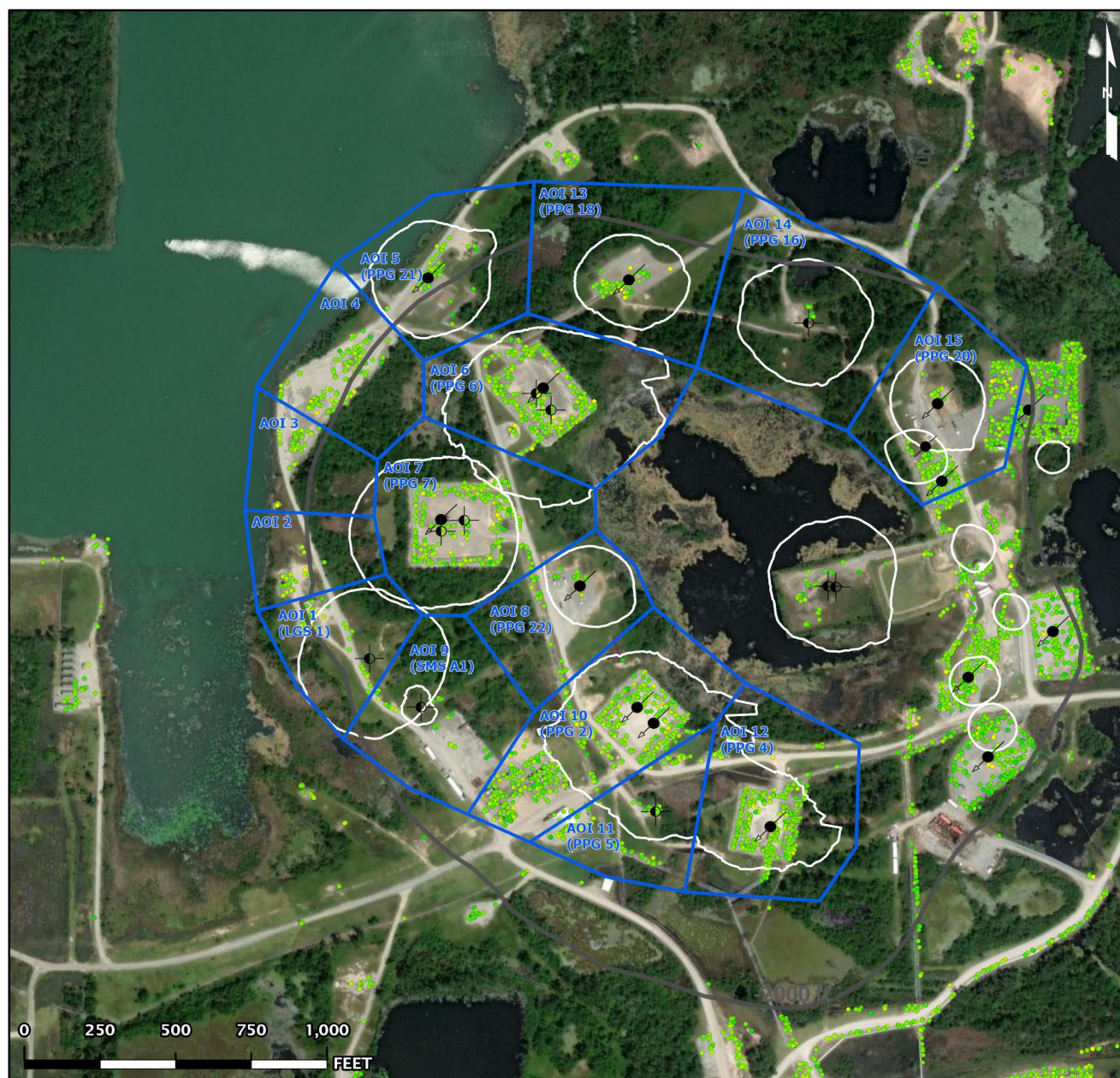
- 09 - Active - Injection
- 29 - Dry and Plugged



## TSX/PAZ Data (01/24/2023 - 10/27/2024)

## Nonlinear Acceleration Data Points

Date range: 01/24/2023 - 10/27/2024



- AOI Boundary
- Historical Cavern Extent
- Top of Dome (-2000 ft Contour)
- InSAR LOS Measurement Point
- Cavern Well Surface Locations
- 09 - Active - Injection
- 29 - Dry and Plugged



## TSX/PAZ Data (01/24/2023 - 10/27/2024)

## Linear Velocity Data Points

Date range: 01/24/2023 - 10/27/2024

