

Westlake US 2
Received 1/13/2025

TSX/PAZ Satellite Update
InSAR Subsidence
January 8, 2025

Lonquist comment:

The TSX satellite from the TSX/PAZ constellation (4 & 7-day revisit) passed by Sulphur on Wednesday January 8. We received the dataset Friday and verified that none of the point groups within the review area are showing deviation from their respective trends. The attached report has been prepared for reference.

TSX/PAZ Satellite Update

Continuous InSAR Monitoring of
Ground Displacement At Westlake
Caverns and Western Dome Flank

Sulphur Mines Salt Dome

Prepared for:
Westlake Chemical

Prepared by:
Lonquist & Co., LLC
8591 United Plaza Blvd.
Suite 280
Baton Rouge, LA 70809

Dataset
Satellite Source
TerraSAR-X - PAZ Constellation
Most Recent Image Date
Wednesday, January 8, 2025

Analysis Report Date:
January 13, 2025

Dataset Information

Satellite Source	TerraSAR-X - PAZ Constellation
Revisit Frequency	4 and 7 days
Most Recent Image Date	Wednesday, January 8, 2025
Dataset Image Count	125
Dataset Time Range	January 24, 2023 - January 8, 2025
Dataset Length	1.96 Years
Satellite Line-of-Sight (LOS)	37° East of Vertical (Viewing site from the East)

Analysis Methodology

Time Series Charts

Trend lines were calculated for the averaged displacement values within each AOI. Both a nonlinear (quadratic) and linear regression were applied to each AOI point group to identify rates of change in LOS displacement. These trends are displayed in the Time Series section of this report.

Contour Maps

A nonlinear (quadratic) and linear trend was also calculated for each individual measurement point across the analysis region. Nonlinear trend values for each point were used to generate Velocity and Acceleration contour maps to convey the spatial distribution of the calculated movement. The linear trend values for each point (which lack an acceleration component) were used to generate an additional Velocity contour map. Maps depicting the individual data points colored by these trend values are also included in the last section of the report.

Negative velocity values indicate subsidence or westward movement and positive velocity indicates uplift or eastward movement. Negative acceleration values indicate increasing rates of subsidence, increasing westward movement, or slowing eastward movement and positive acceleration values indicate slowing rates of subsidence, slowing westward movement, or increasing eastward movement.

Observations

To-date there have been no acute deviations from established subsidence trends in the areas investigated.

Per guidance from the InSAR data provider, a periodic reset of the TSX/PAZ analysis baseline is recommended every 12-24 months. This involves the reprocessing of the full historical image stack and the generation of a new point grid. The compounded effects of noise factors which have developed over time, relating to atmospheric moisture, soil water content, vegetation coverage, and various other surface changes, are minimized in this process. With one year having passed since the prior baseline reset, this was requested, and the current dataset (01-08-2025) is the third to utilize the new baseline.

The displacement trends appear mostly linear among the analysis AOIs. A slight seasonal fluctuation is evident in some of the charts. The moderate negative acceleration values noted in datasets prior to the baseline reset are no longer present.



Date Signed: January 13, 2025
Austin, Texas

Nathaniel L. Byars, P.E.
Principal Engineer
Louisiana License No. 40697

InSAR Data Sources

InSAR Data

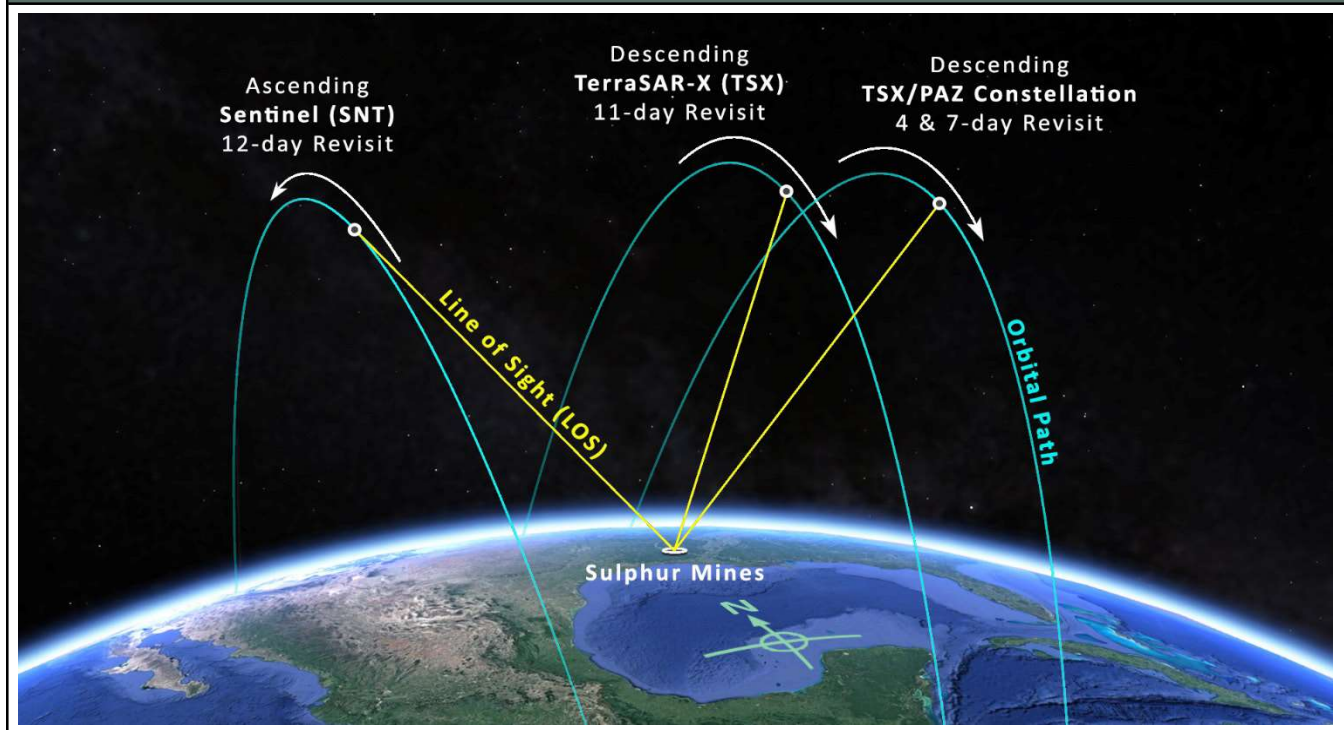
Interferometric Synthetic Aperture Radar (InSAR) is the most well established method to continually evaluate small, normally undetectable, ground movement over a large area. Radar imagery collected via satellites over successive orbital passes is used to identify and define measurement points on the ground. Objects or ground features providing a stable reflection of radar energy such as buildings, roads, and infrastructure produce the highest quality measurement points. InSAR analysis identifies the change in distance between the satellite and each measurement point over time relative to a stable reference point within the imaged area.

Satellite Sources

Two InSAR datasets are being used to evaluate subsidence over the Sulphur Mines Salt Dome. These datasets provide Line-of-Sight (LOS) displacement measurements from both ascending and descending orbits. An ascending orbit denotes the satellite's longitudinal course from south to north as it passes over the site, while a descending orbit denotes the satellite is moving from north to south.

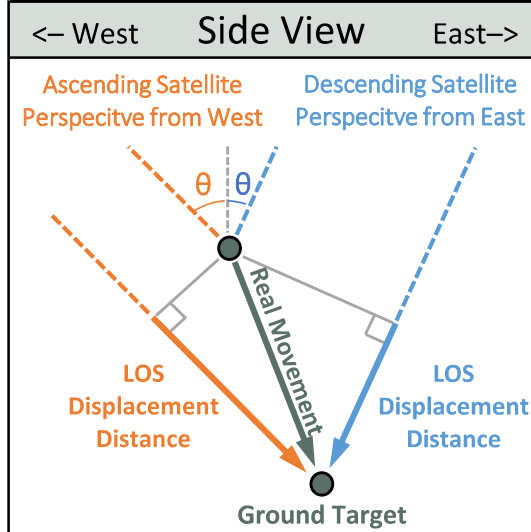
The first dataset comes from a low-resolution Sentinel-1 (SNT) satellite on an ascending orbit that captures data from the west of the site on a 12-day frequency. The second comes from a pair of high resolution satellites that share the same descending orbit and capture data from east of the site. These are a TSX satellite and the PAZ satellite (TSX/PAZ constellation), both with an 11-day revisit frequency. Their orbits are offset with the PAZ satellite passing over the site 4 days after the TSX satellite. Prior to May 2023, data was captured from a different high-resolution TerraSAR-X (TSX) satellite on a descending orbit that captured data from the east of the site on an 11-day frequency. The transition was made for the increased data frequency that resulted from a 4 and 7-day revisit period. The image below depicts the orbital paths of the satellites in relation to the Sulphur Mines Salt Dome.

Satellite Orbital Diagram



InSAR Line-of-Site (LOS) Data

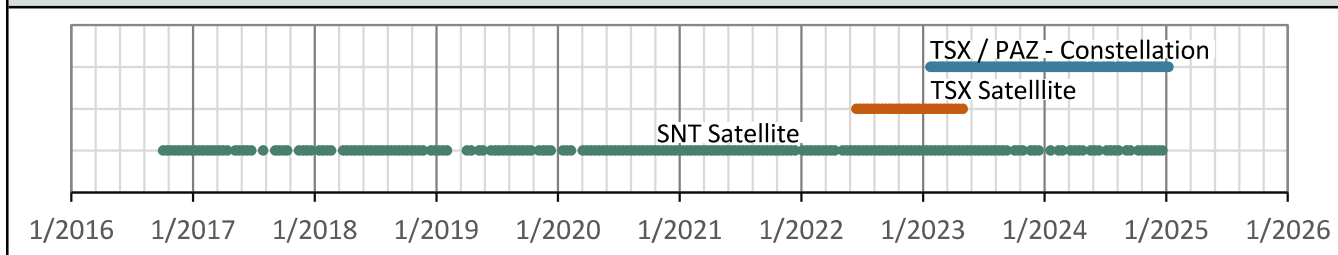
LOS displacement measurements refer to a change in distance between the satellite sensor and the ground target. Measurement positions on the west side of the Sulphur Dome are known to be experiencing some eastward movement toward the dome center due to the geometry of the subsidence basin. The InSAR satellites view the site from eastward and westward positions so LOS measurements are understood to convey a movement distance that is not purely vertical. The diagram to the right illustrates the geometric relationship between the theoretical Real movement of a ground target and LOS displacement measurements from two different satellite viewing directions.



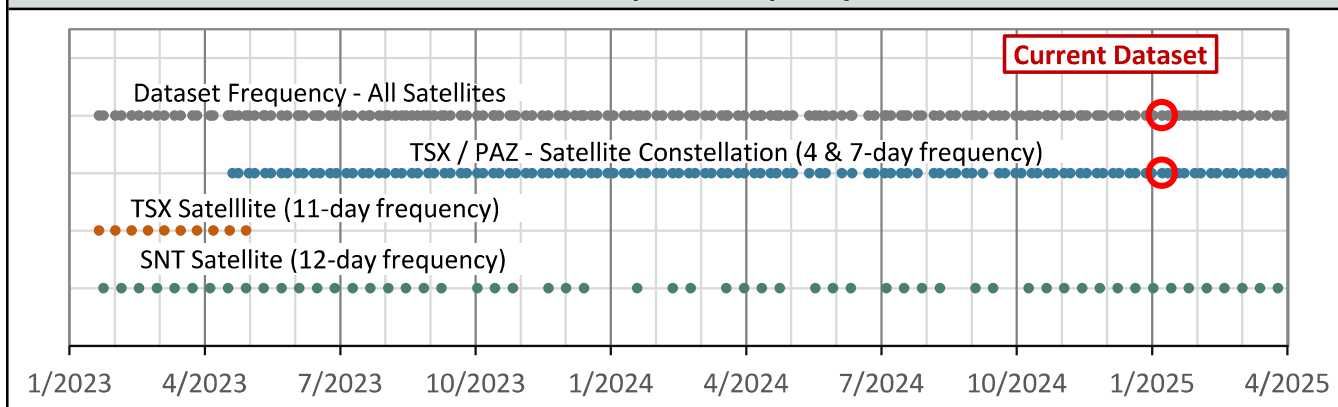
Satellite Properties & Image Frequency

Satellite and Data Properties	SNT	TSX	TSX/PAZ Constellation
Band (Wavelength)	C-band (2.20 in)	X-band (1.22 in)	X-band (1.22 in)
Track	T136	T29	T67 & T120
Pixel resolution	65 x 16 ft	3 x 3 ft	3 x 3 ft
Revisit frequency	12 days	11 days	4 & 7 days
Orbit (LOS Angle, θ)	Ascending (43°)	Descending (17°)	Descending (37°)
Data Start Date	10/4/2016	6/16/2022	1/24/2023
Measurement error range	± 0.20 in	± 0.03 in	± 0.03 in

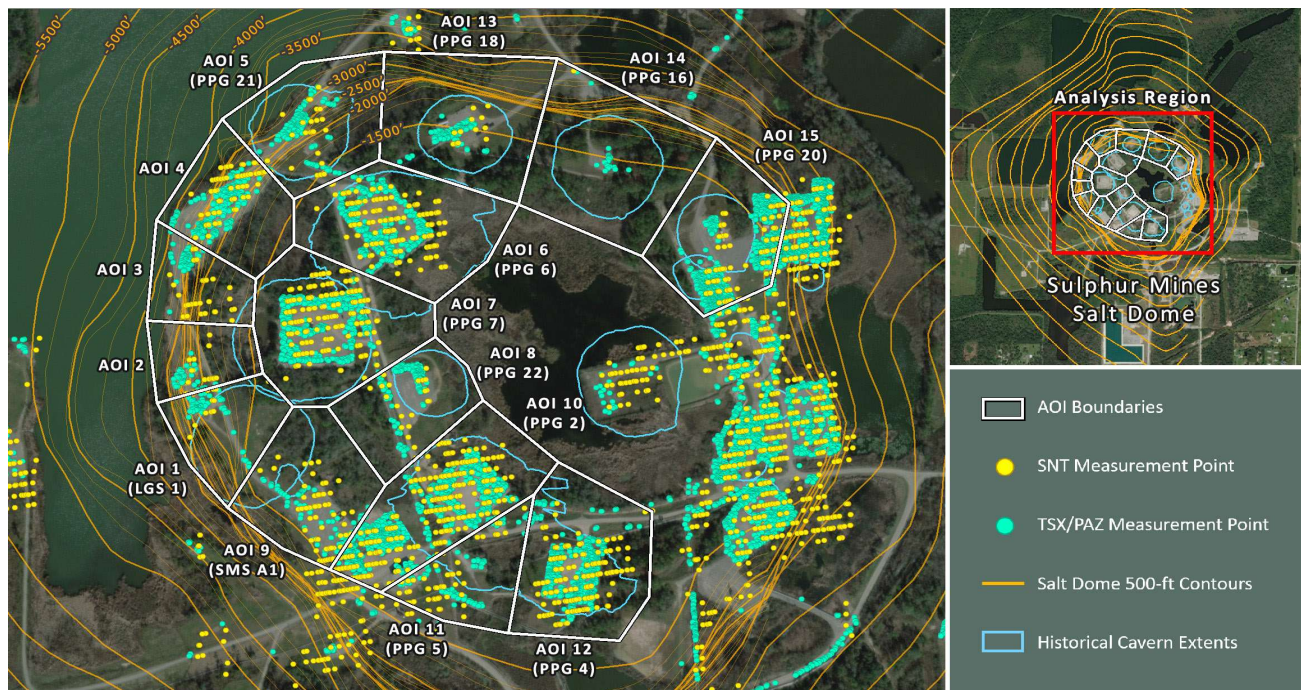
Dataset Measurement History



Dataset Update Frequency



AOI Boundaries & InSAR Measurement Points

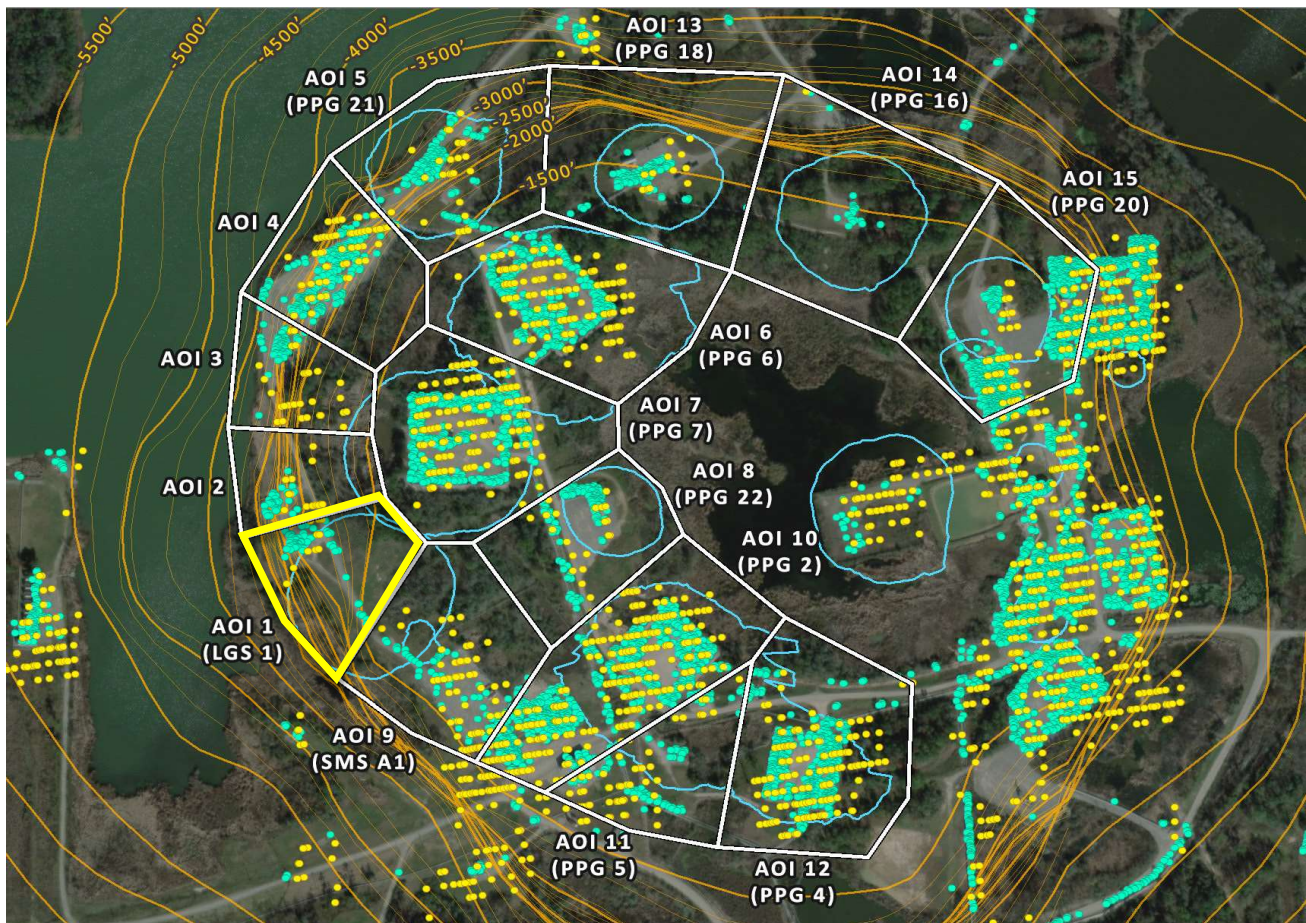


Subsidence Monitoring Areas of Interest (AOIs)

To visually convey and evaluate trend consistency for the displacement time series of each ground target, measurement points were grouped and their displacement values were averaged. The point groups are referred to as Areas of Interest (AOIs) in this analysis and their boundaries are depicted on the above map. The below table lists the trend values calculated in each AOI for the dataset evaluated in this report.

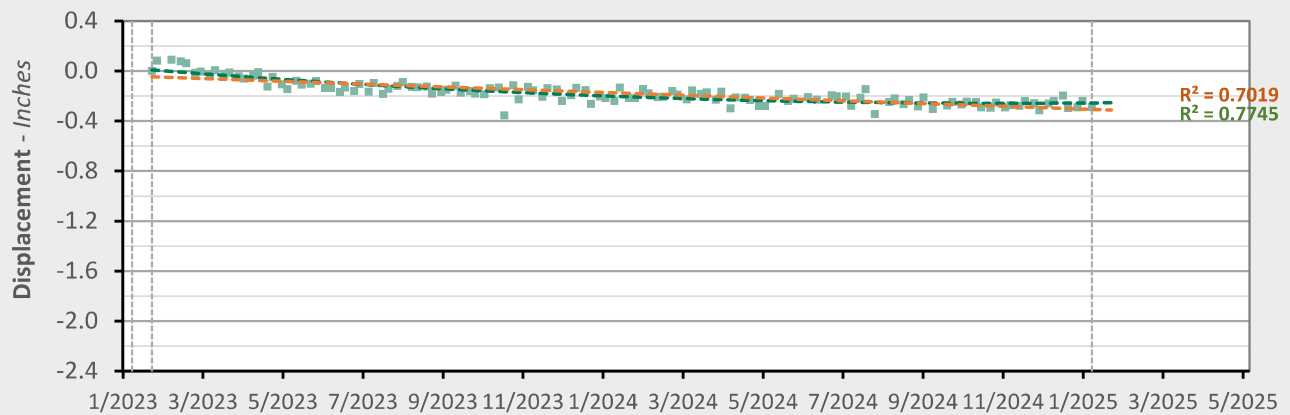
AOI Name	TSX/PAZ (1/8/2025)	LOS Velocity (in/yr)		LOS Acceleration (in/yr ²)	
		Point Count	Nonlinear	Linear	Nonlinear
AOI 1 (LGS 1)	77		+0.03	-0.13	+0.17
AOI 2	44		-0.08	-0.20	+0.13
AOI 3	70		-0.07	-0.14	+0.07
AOI 4	225		-0.09	-0.14	+0.05
AOI 5 (PPG 21)	139		-0.13	-0.21	+0.08
AOI 6 (PPG 6)	355		-0.42	-0.47	+0.05
AOI 7 (PPG 7)	396		-0.31	-0.37	+0.05
AOI 8 (PPG 22)	127		-0.57	-0.68	+0.12
AOI 9 (SMS A1)	67		-0.09	-0.29	+0.21
AOI 10 (PPG 2)	812		-0.49	-0.56	+0.07
AOI 11 (PPG 5)	128		-0.46	-0.54	+0.09
AOI 12 (PPG 4)	551		-0.79	-0.81	+0.02
AOI 13 (PPG 18)	107		-0.32	-0.43	+0.12
AOI 14 (PPG 16)	23		-0.57	-0.81	+0.25
AOI 15 (PPG 20)	743		-0.91	-0.94	+0.03

AOI 1 (LGS 1) - Location Map



AOI 1 (LGS 1) - Displacement Time Series

TSX/PAZ (1/8/2025) Point Count: **77**



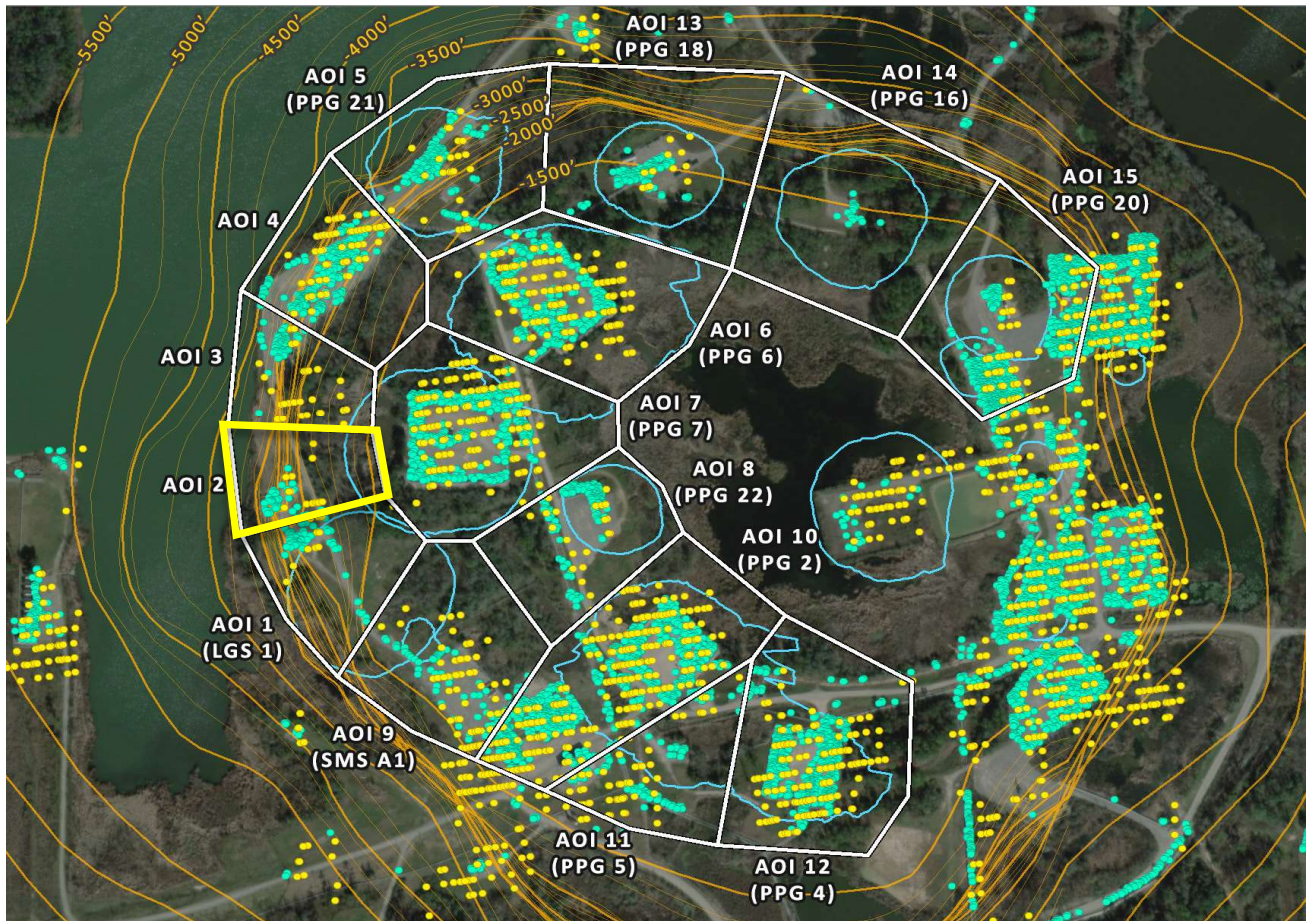
	Nonlinear Trend	Linear Trend
Velocity:	+0.03 in/yr	-0.13 in/yr
Acceleration:	+0.17 in/yr ²	0.00 in/yr ²

■ LOS Displacement Measurement

--- Nonlinear Trend Line
(Quadratic Regression)

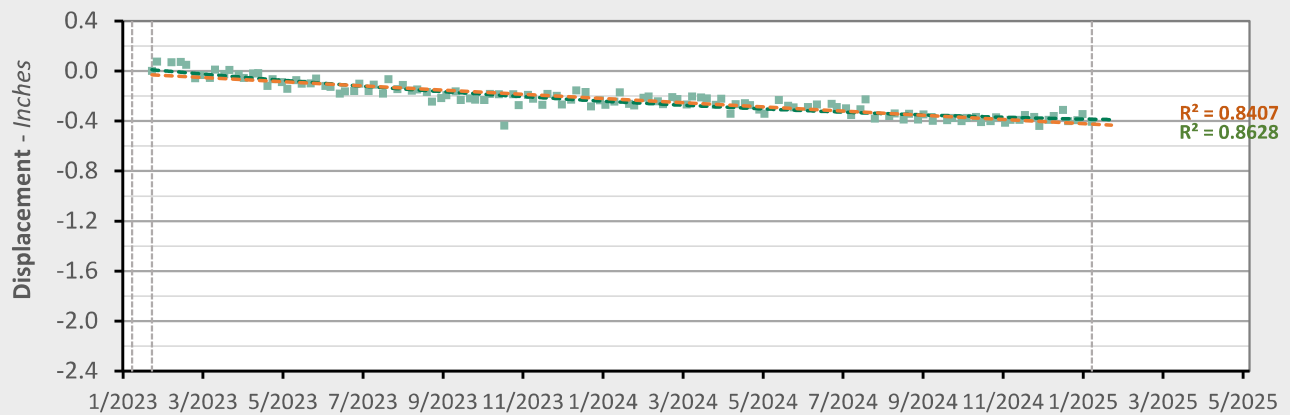
--- Linear Trend Line
(Linear Regression)

AOI 2 - Location Map



AOI 2 - Displacement Time Series

TSX/PAZ (1/8/2025) Point Count: **44**



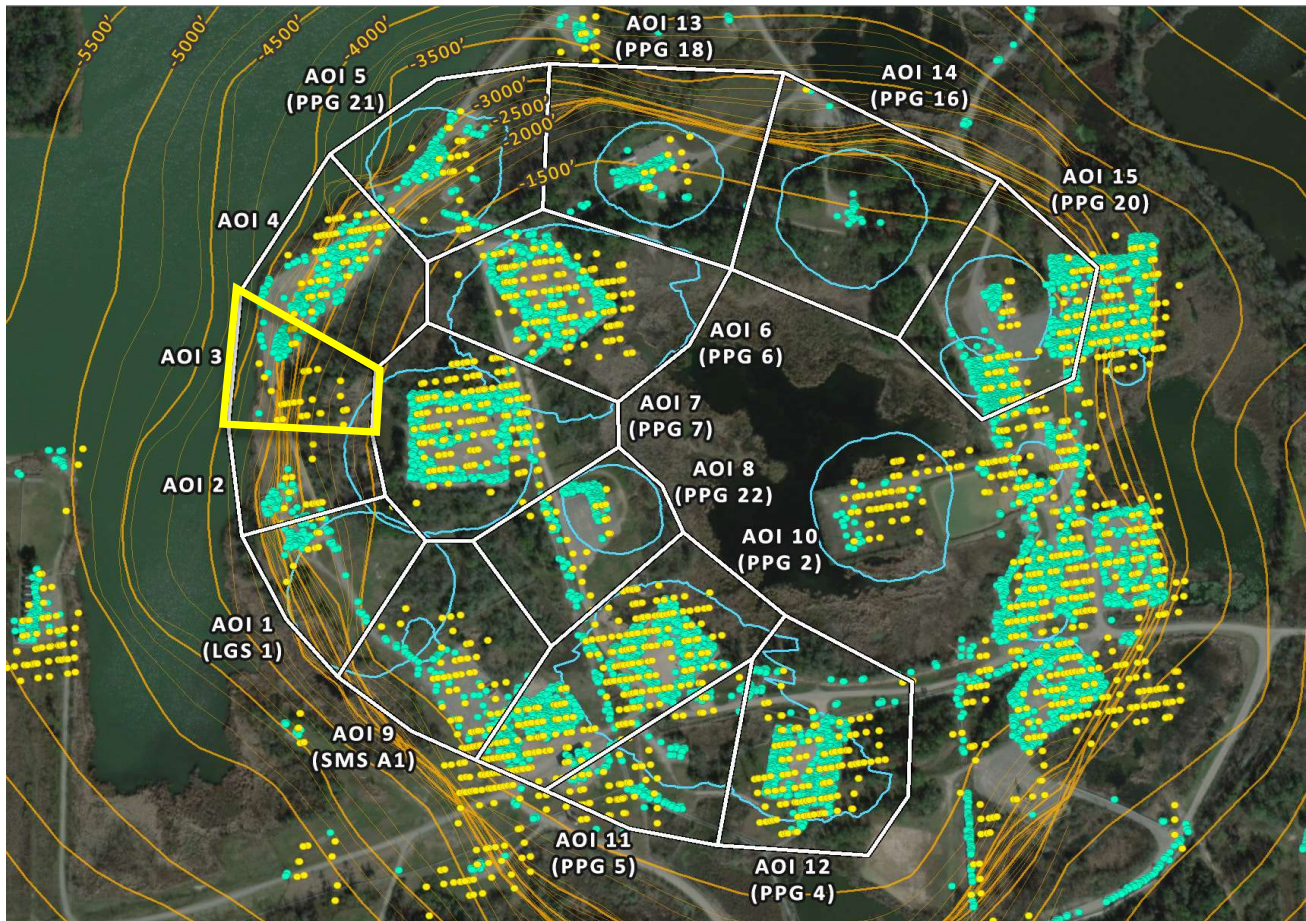
	Nonlinear Trend	Linear Trend
Velocity:	-0.08 in/yr	-0.20 in/yr
Acceleration:	+0.13 in/yr ²	0.00 in/yr ²

■ LOS Displacement Measurement

--- Nonlinear Trend Line
(Quadratic Regression)

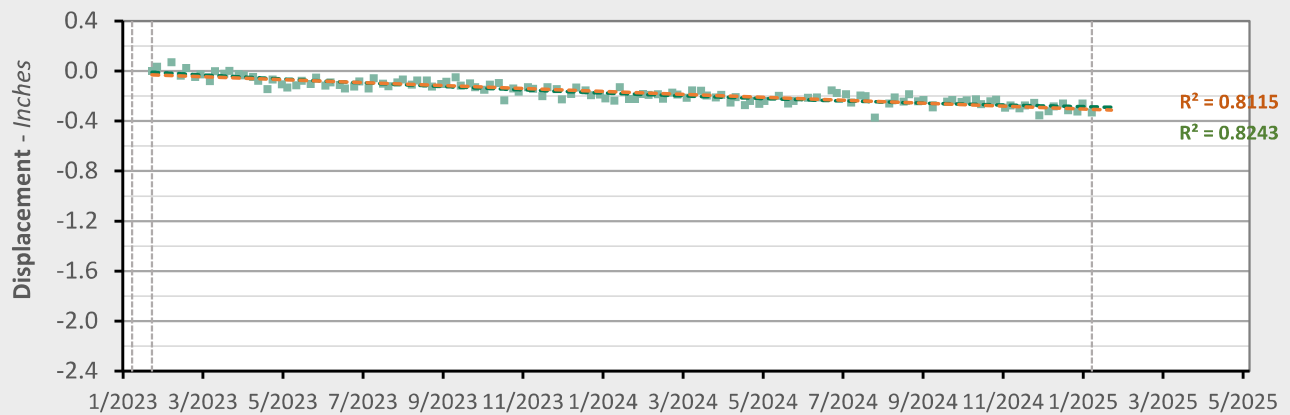
--- Linear Trend Line
(Linear Regression)

AOI 3 - Location Map



AOI 3 - Displacement Time Series

TSX/PAZ (1/8/2025) Point Count: 70



Nonlinear Trend

Linear Trend

Velocity: -0.07 in/yr

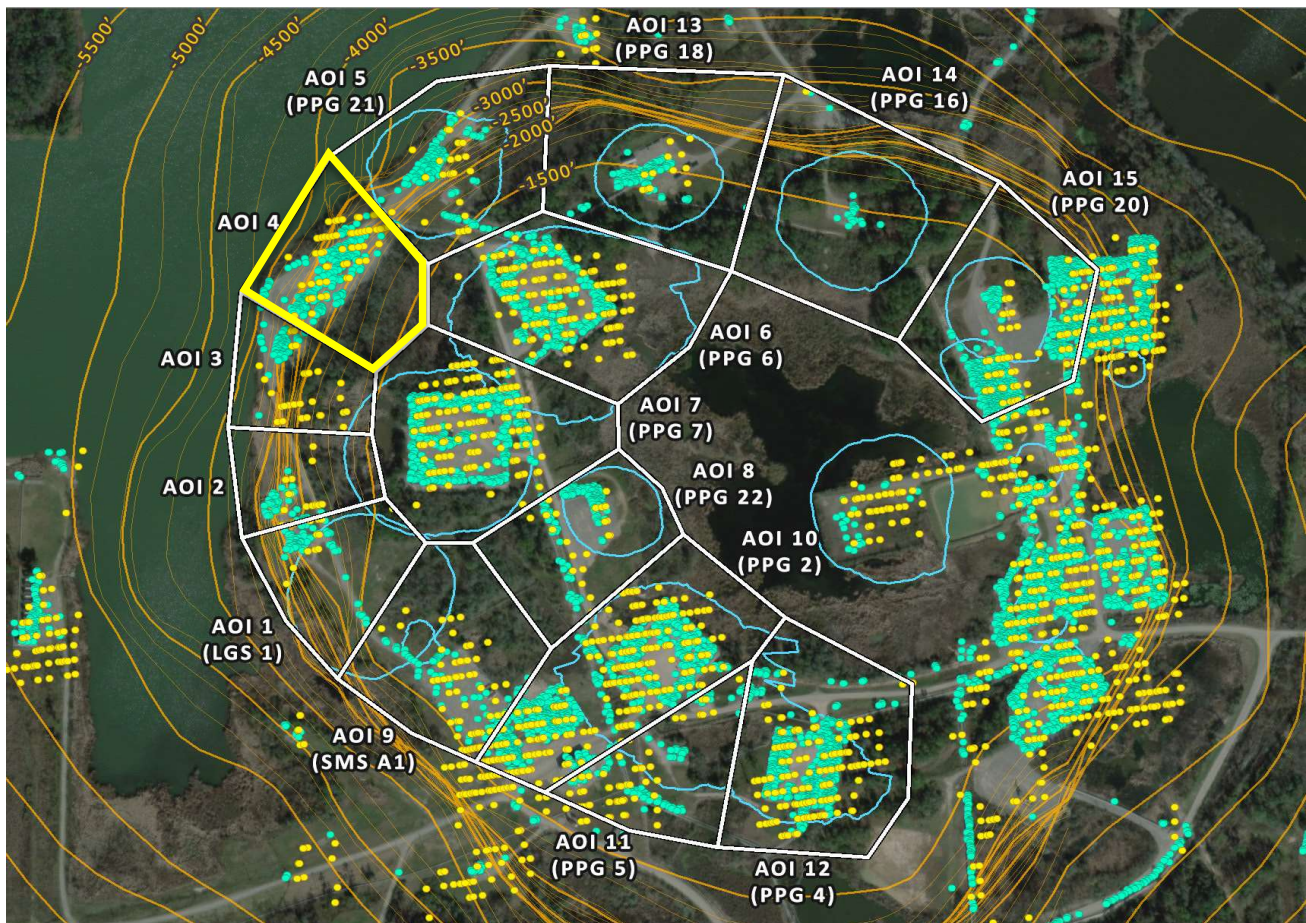
-0.14 in/yr

Acceleration: +0.07 in/yr²0.00 in/yr²

■ LOS Displacement Measurement

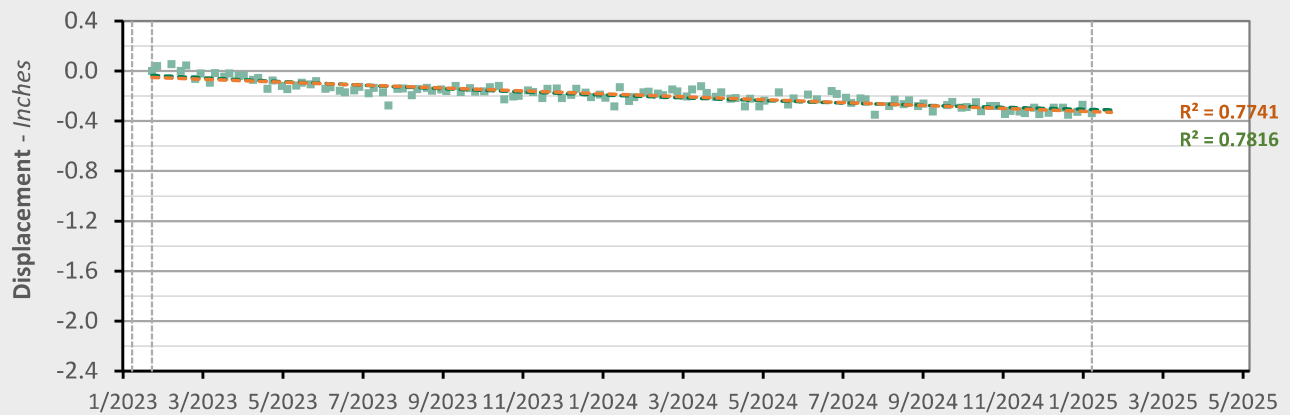
--- Nonlinear Trend Line
(Quadratic Regression)--- Linear Trend Line
(Linear Regression)

AOI 4 - Location Map



AOI 4 - Displacement Time Series

TSX/PAZ (1/8/2025) Point Count: 225



Nonlinear Trend

Linear Trend

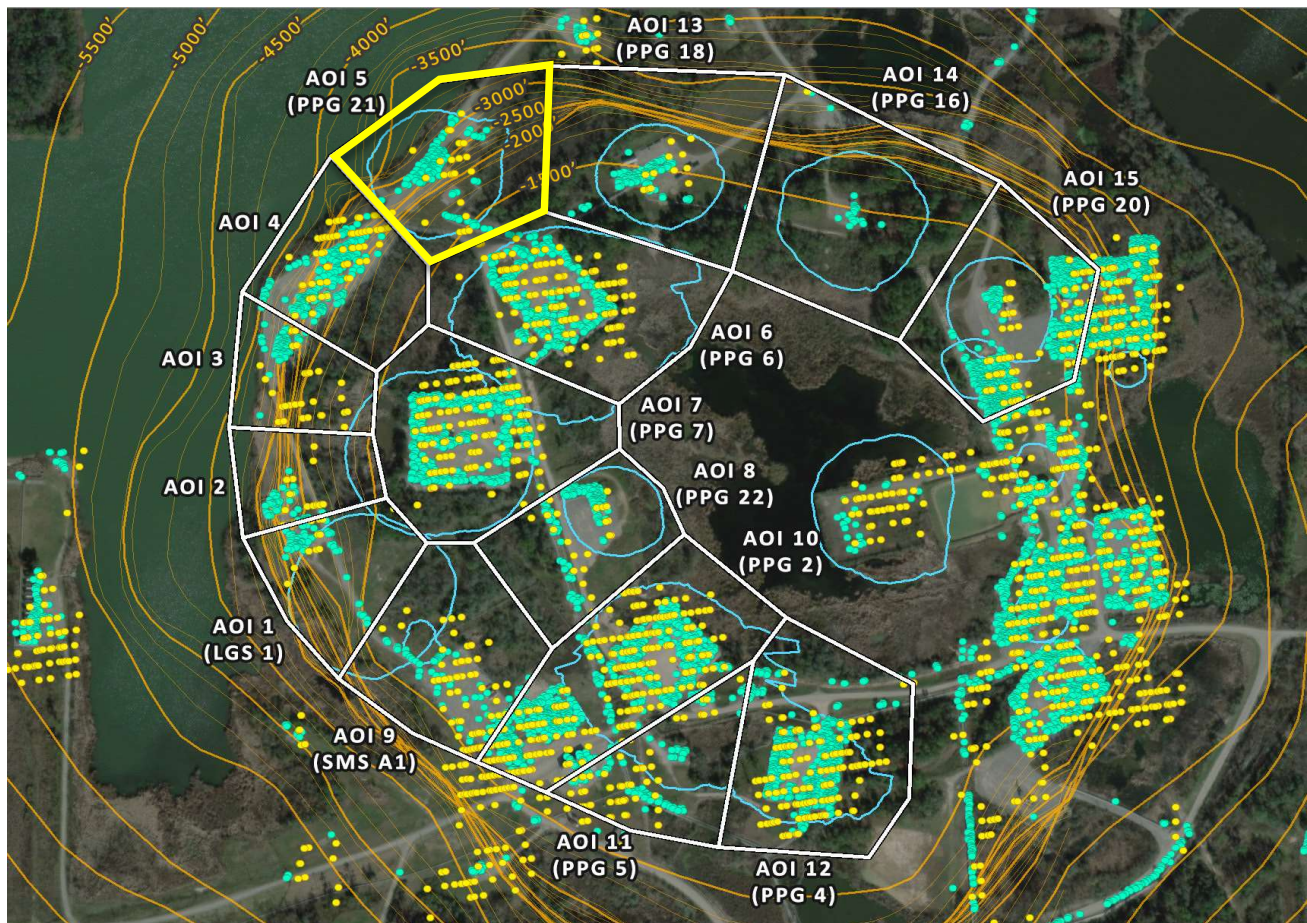
Velocity: -0.09 in/yr
 Acceleration: +0.05 in/yr²

-0.14 in/yr
 0.00 in/yr²

■ LOS Displacement Measurement

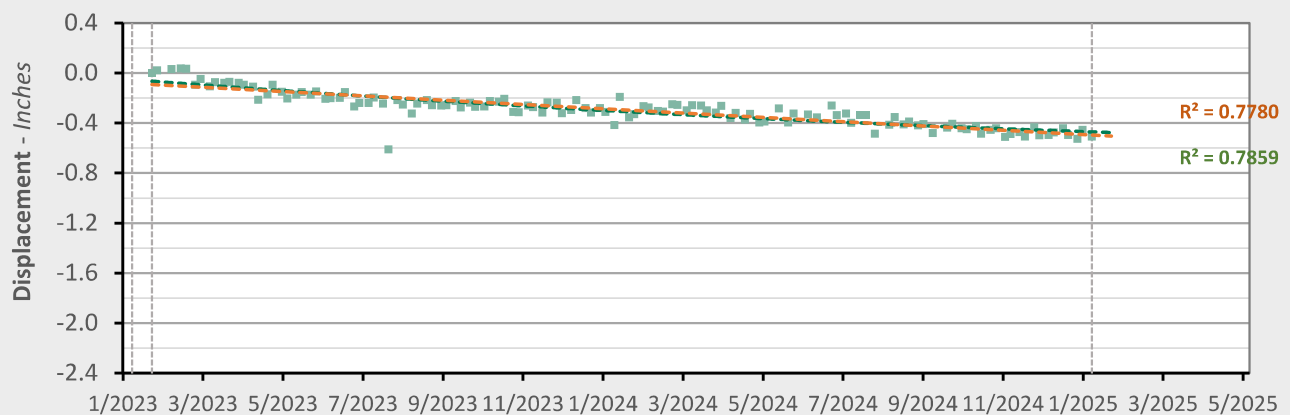
--- Nonlinear Trend Line
(Quadratic Regression)--- Linear Trend Line
(Linear Regression)

AOI 5 (PPG 21) - Location Map



AOI 5 (PPG 21) - Displacement Time Series

TSX/PAZ (1/8/2025) Point Count: 139



	Nonlinear Trend	Linear Trend
Velocity:	-0.13 in/yr	-0.21 in/yr
Acceleration:	+0.08 in/yr ²	0.00 in/yr ²

■ LOS Displacement Measurement

--- Nonlinear Trend Line
(Quadratic Regression)

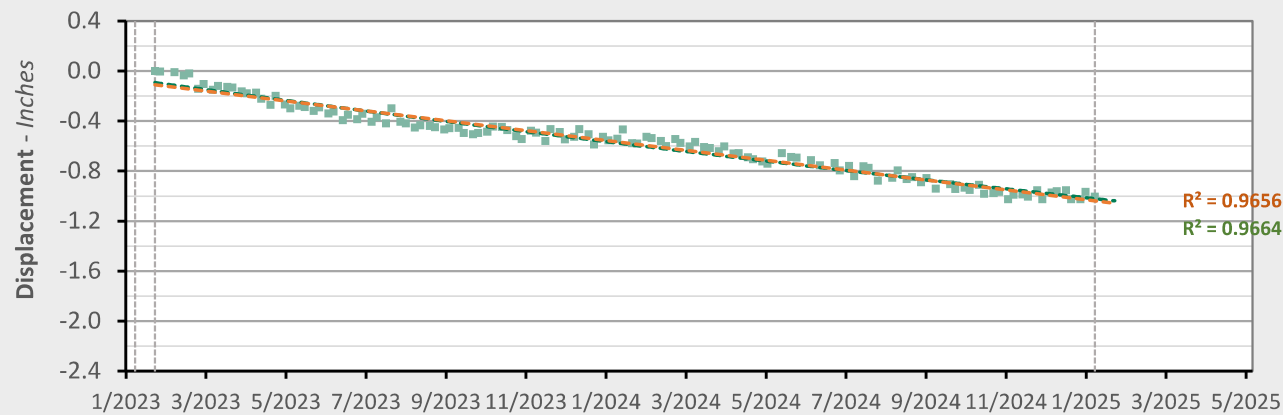
--- Linear Trend Line
(Linear Regression)

AOI 6 (PPG 6) - Location Map



AOI 6 (PPG 6) - Displacement Time Series

TSX/PAZ (1/8/2025) Point Count: 355



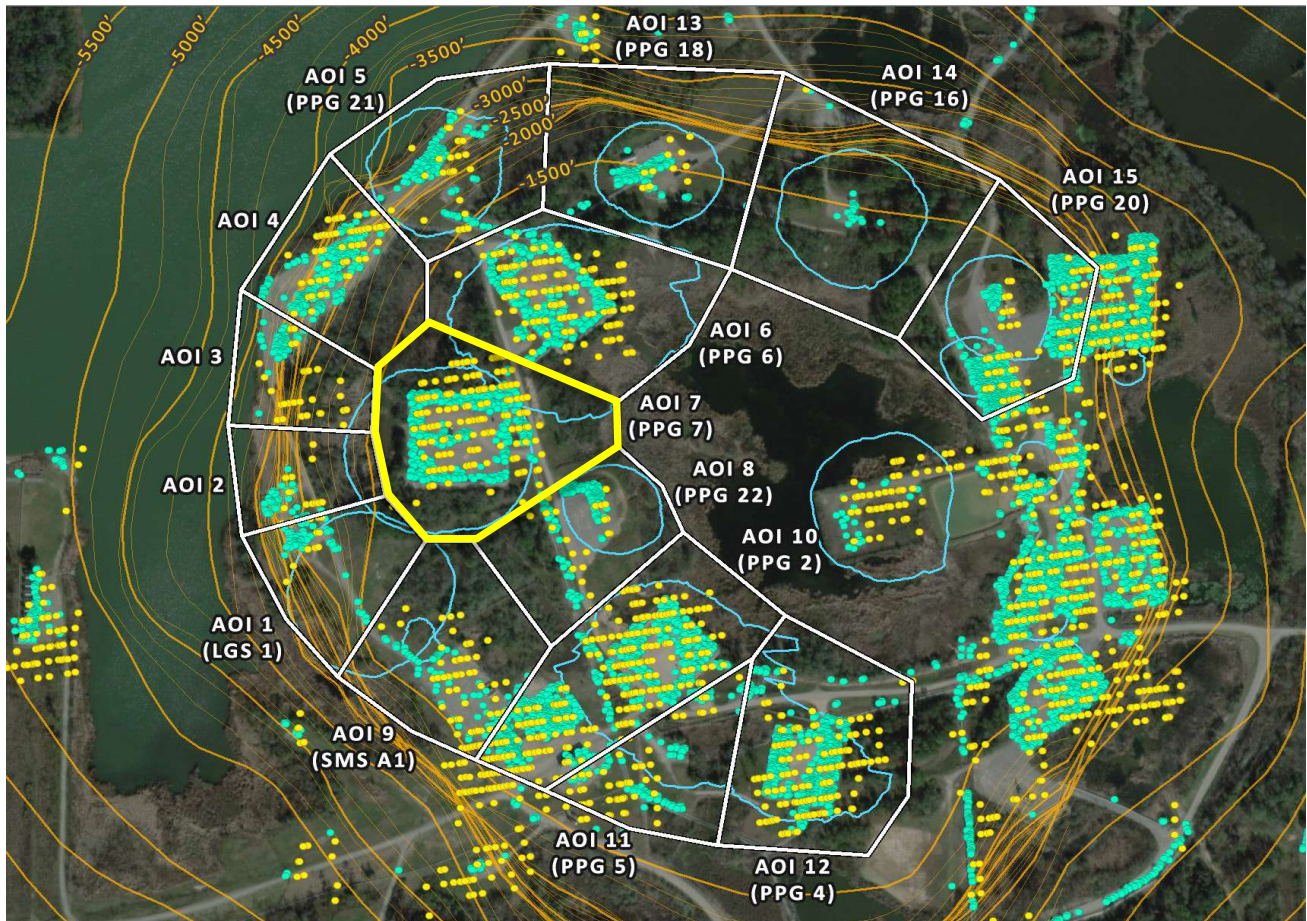
	Nonlinear Trend	Linear Trend
Velocity:	-0.42 in/yr	-0.47 in/yr
Acceleration:	+0.05 in/yr²	0.00 in/yr²

■ LOS Displacement Measurement

--- Nonlinear Trend Line
(Quadratic Regression)

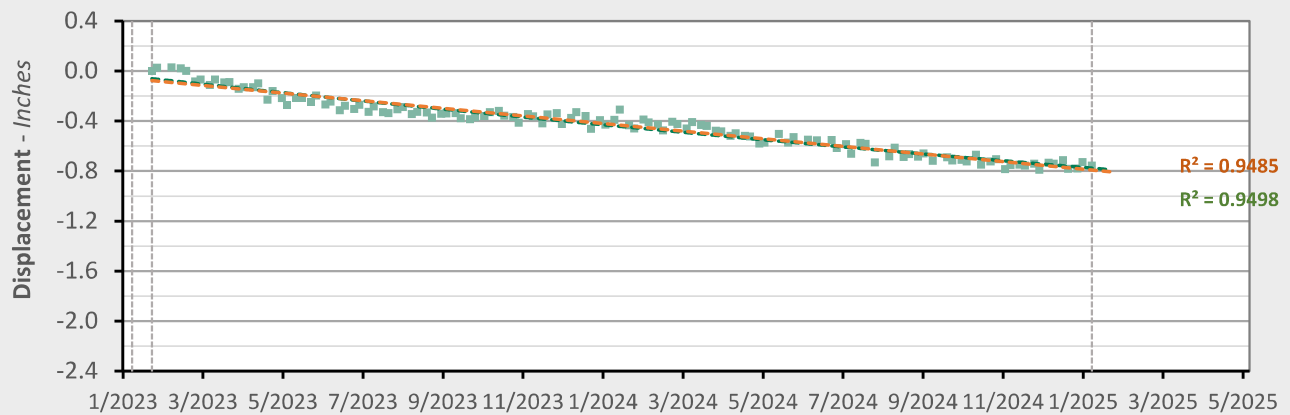
--- Linear Trend Line
(Linear Regression)

AOI 7 (PPG 7) - Location Map



AOI 7 (PPG 7) - Displacement Time Series

TSX/PAZ (1/8/2025) Point Count: 396

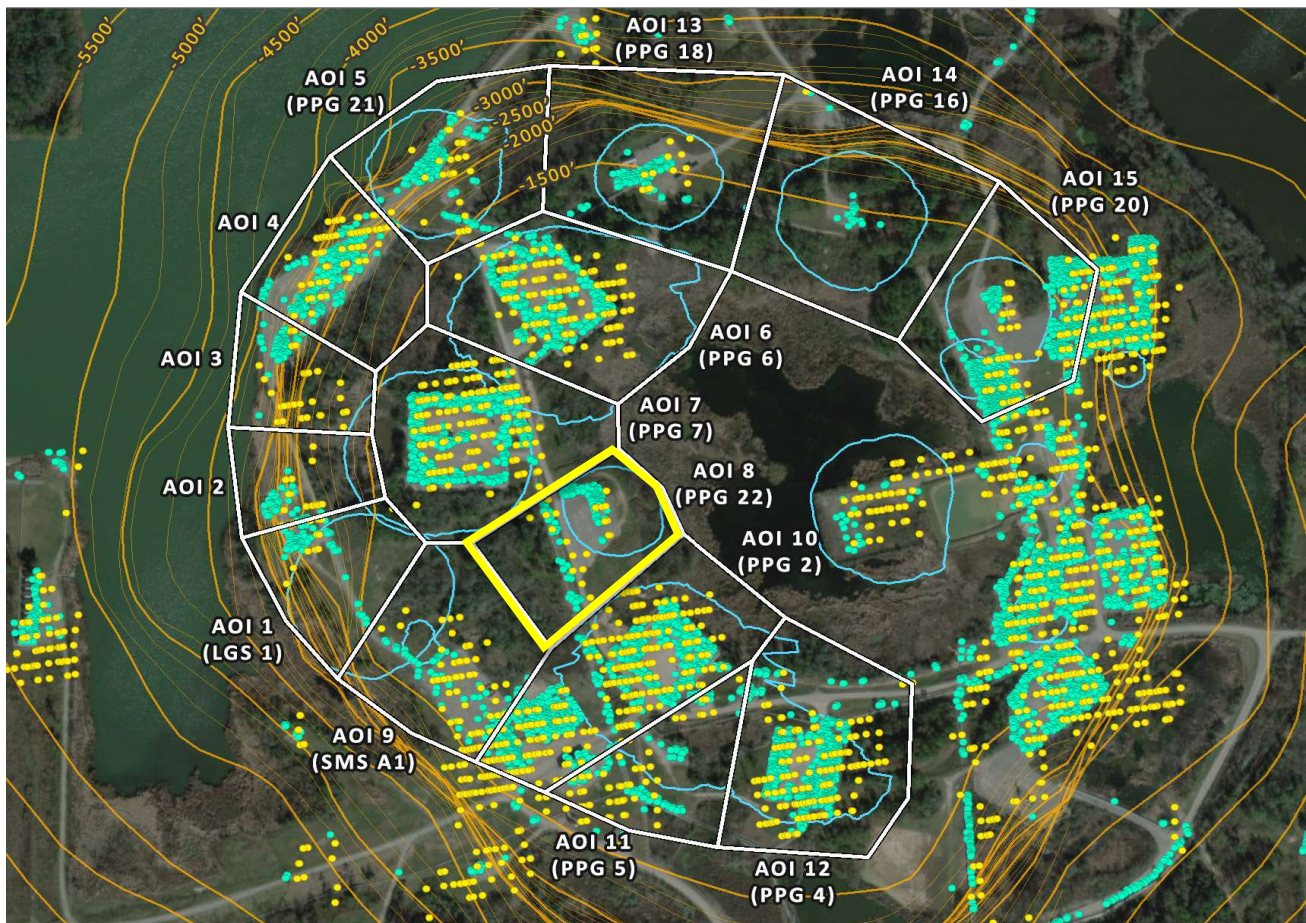


	Nonlinear Trend	Linear Trend
Velocity:	-0.31 in/yr	-0.37 in/yr
Acceleration:	+0.05 in/yr ²	0.00 in/yr ²

■ LOS Displacement Measurement

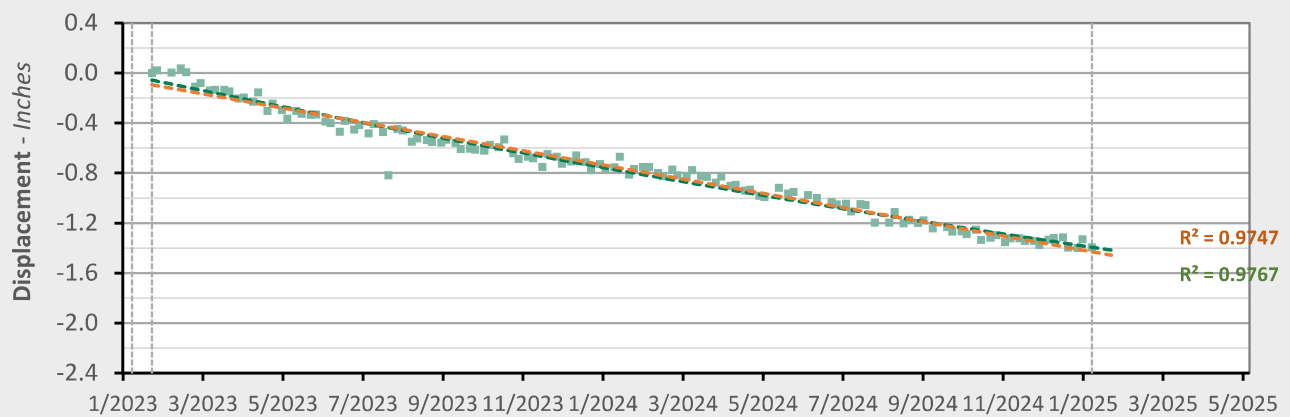
--- Nonlinear Trend Line
(Quadratic Regression)--- Linear Trend Line
(Linear Regression)

AOI 8 (PPG 22) - Location Map



AOI 8 (PPG 22) - Displacement Time Series

TSX/PAZ (1/8/2025) Point Count: 127

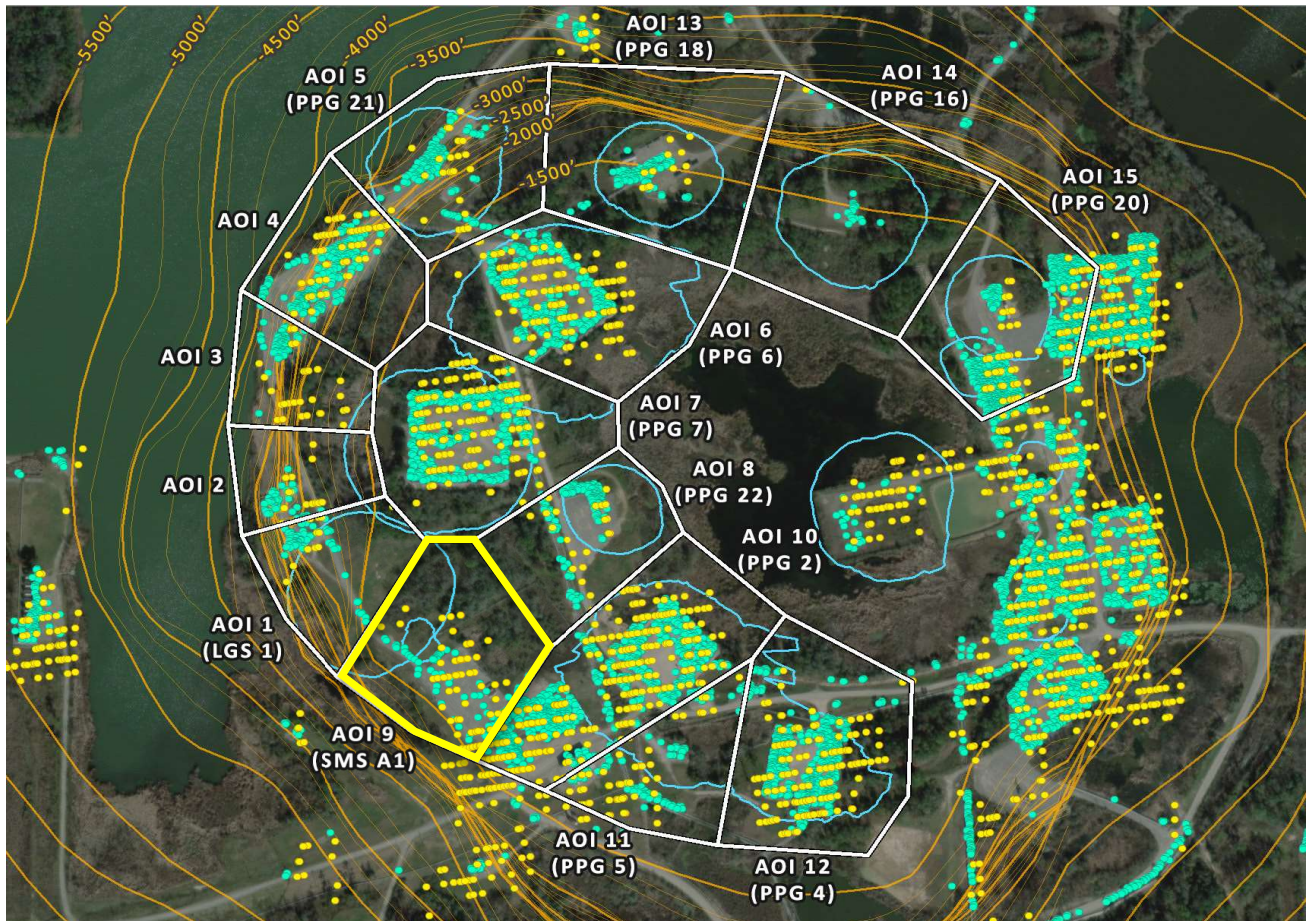


	Nonlinear Trend	Linear Trend
Velocity:	-0.57 in/yr	-0.68 in/yr
Acceleration:	+0.12 in/yr ²	0.00 in/yr ²

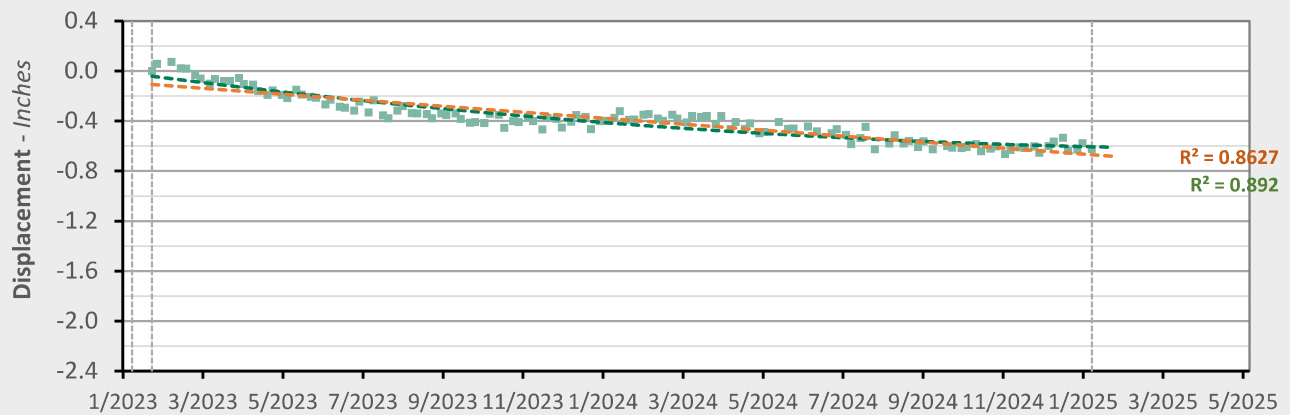
■ LOS Displacement Measurement

--- Nonlinear Trend Line
(Quadratic Regression)--- Linear Trend Line
(Linear Regression)

AOI 9 (PPG A1) - Location Map



AOI 9 (SMS A1) - Displacement Time Series TSX/PAZ (1/8/2025) Point Count: 67



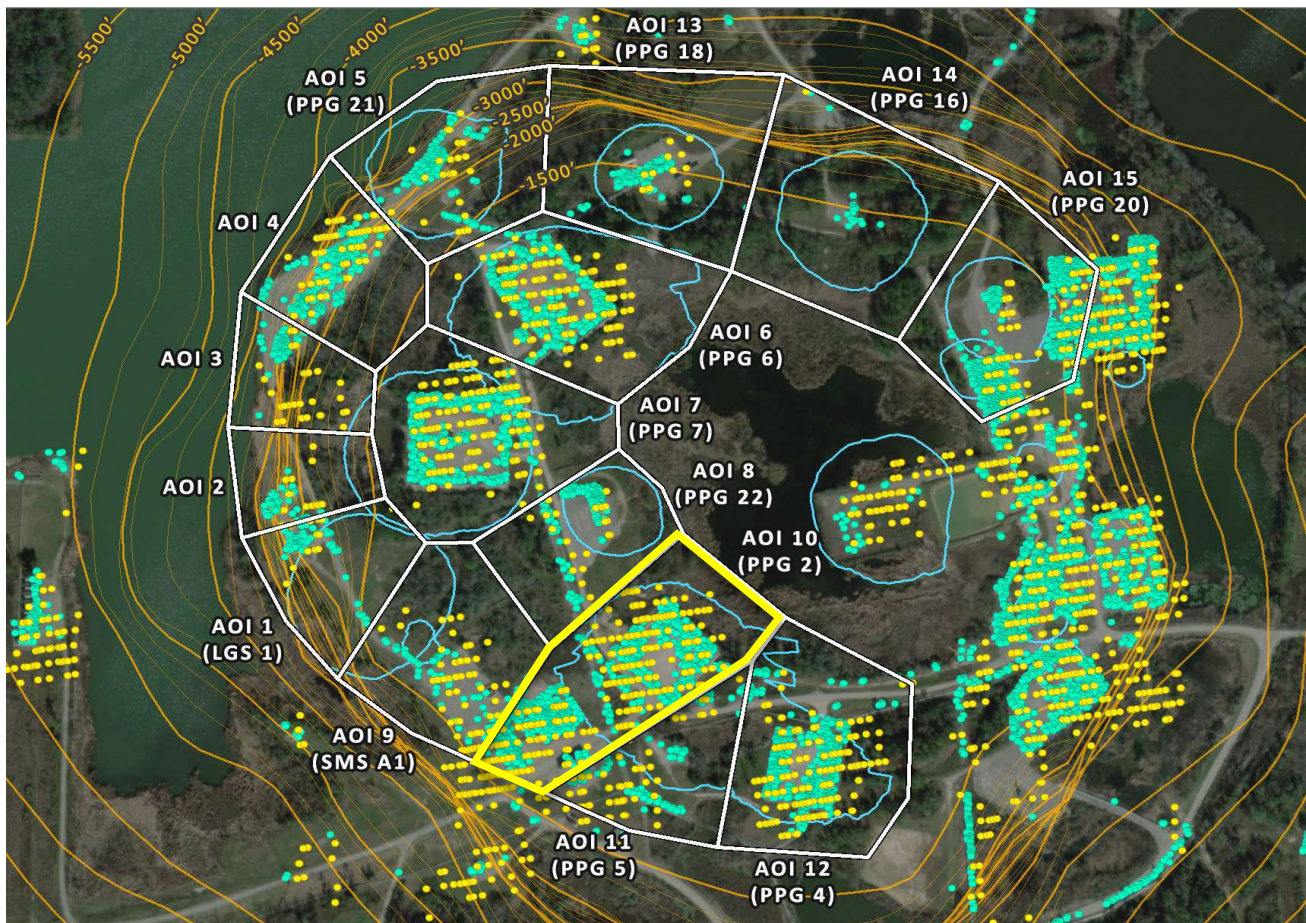
	Nonlinear Trend	Linear Trend
Velocity:	-0.09 in/yr	-0.29 in/yr
Acceleration:	+0.21 in/yr ²	0.00 in/yr ²

■ LOS Displacement Measurement

--- Nonlinear Trend Line
(Quadratic Regression)

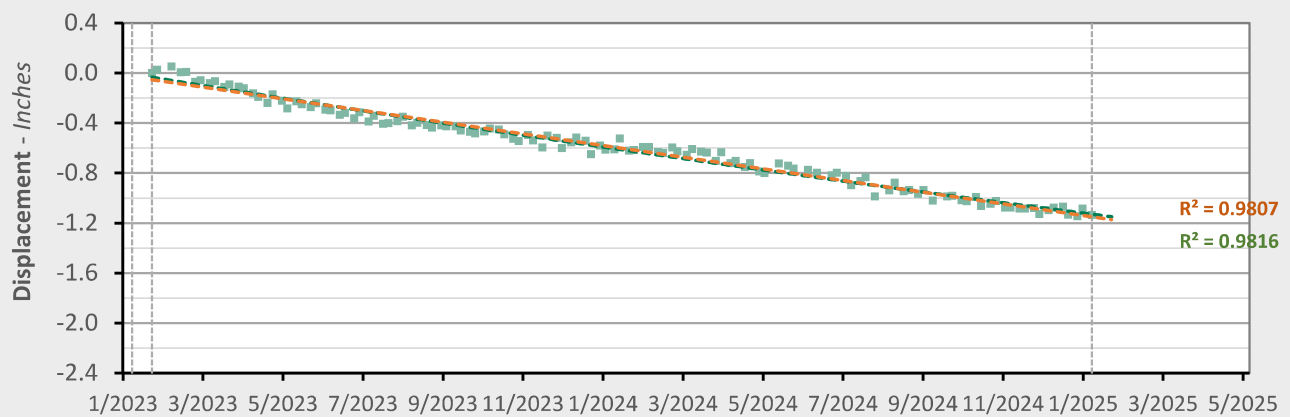
--- Linear Trend Line
(Linear Regression)

AOI 10 (PPG 2) - Location Map



AOI 10 (PPG 2) - Displacement Time Series

TSX/PAZ (1/8/2025) Point Count: 812

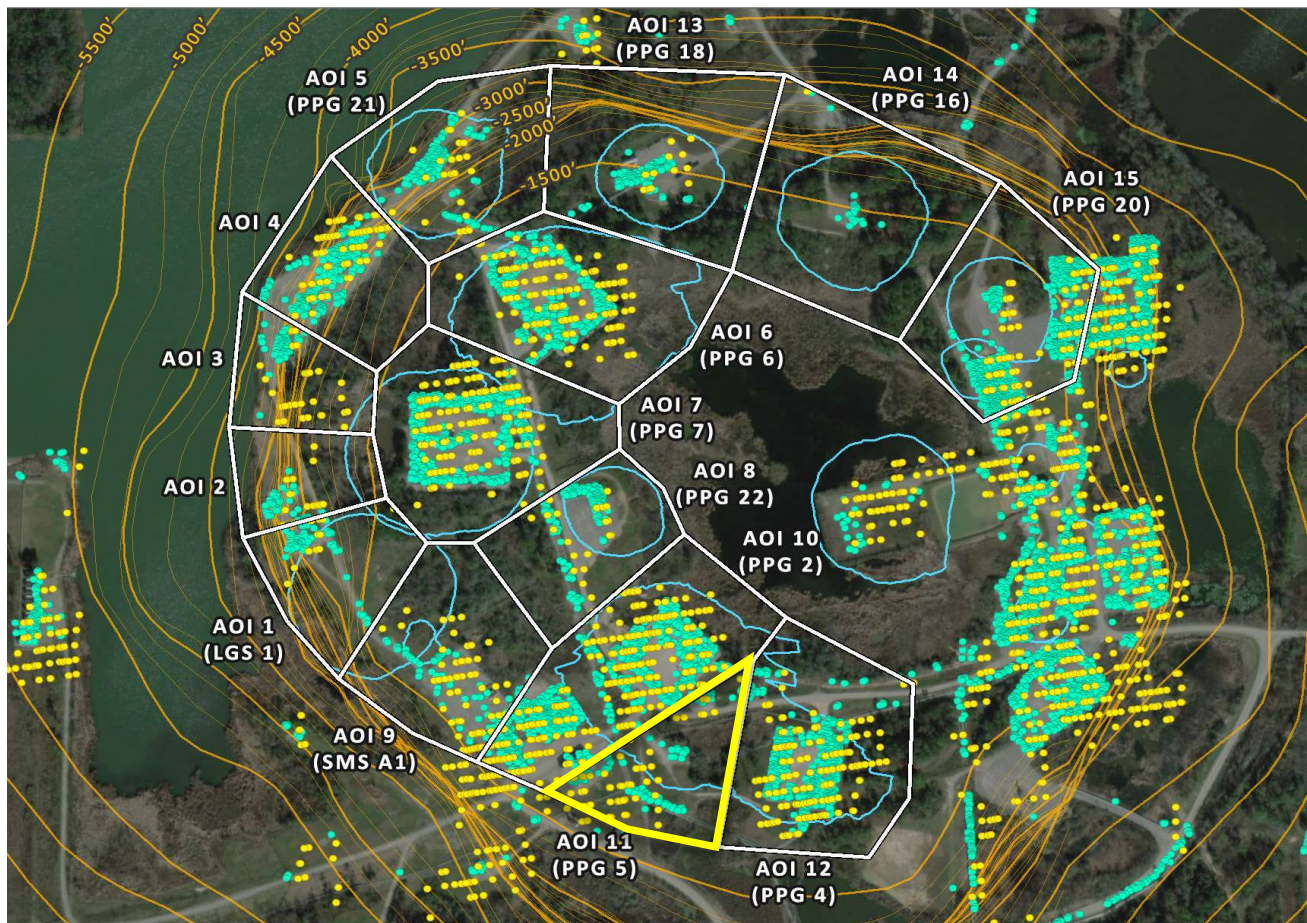


	Nonlinear Trend	Linear Trend
Velocity:	-0.49 in/yr	-0.56 in/yr
Acceleration:	+0.07 in/yr ²	0.00 in/yr ²

■ LOS Displacement Measurement

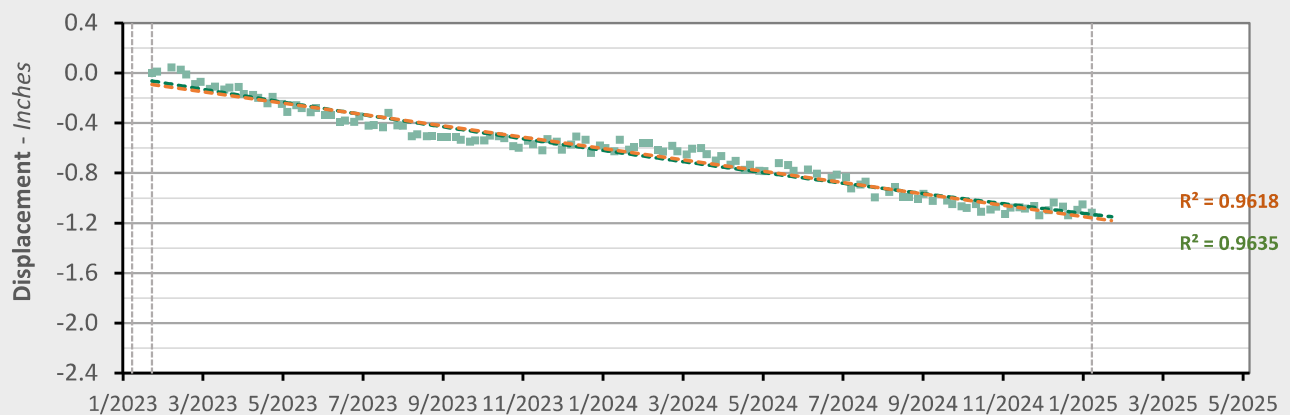
--- Nonlinear Trend Line
(Quadratic Regression)--- Linear Trend Line
(Linear Regression)

AOI 11 (PPG 5) - Location Map



AOI 11 (PPG 5) - Displacement Time Series

TSX/PAZ (1/8/2025) Point Count: 128

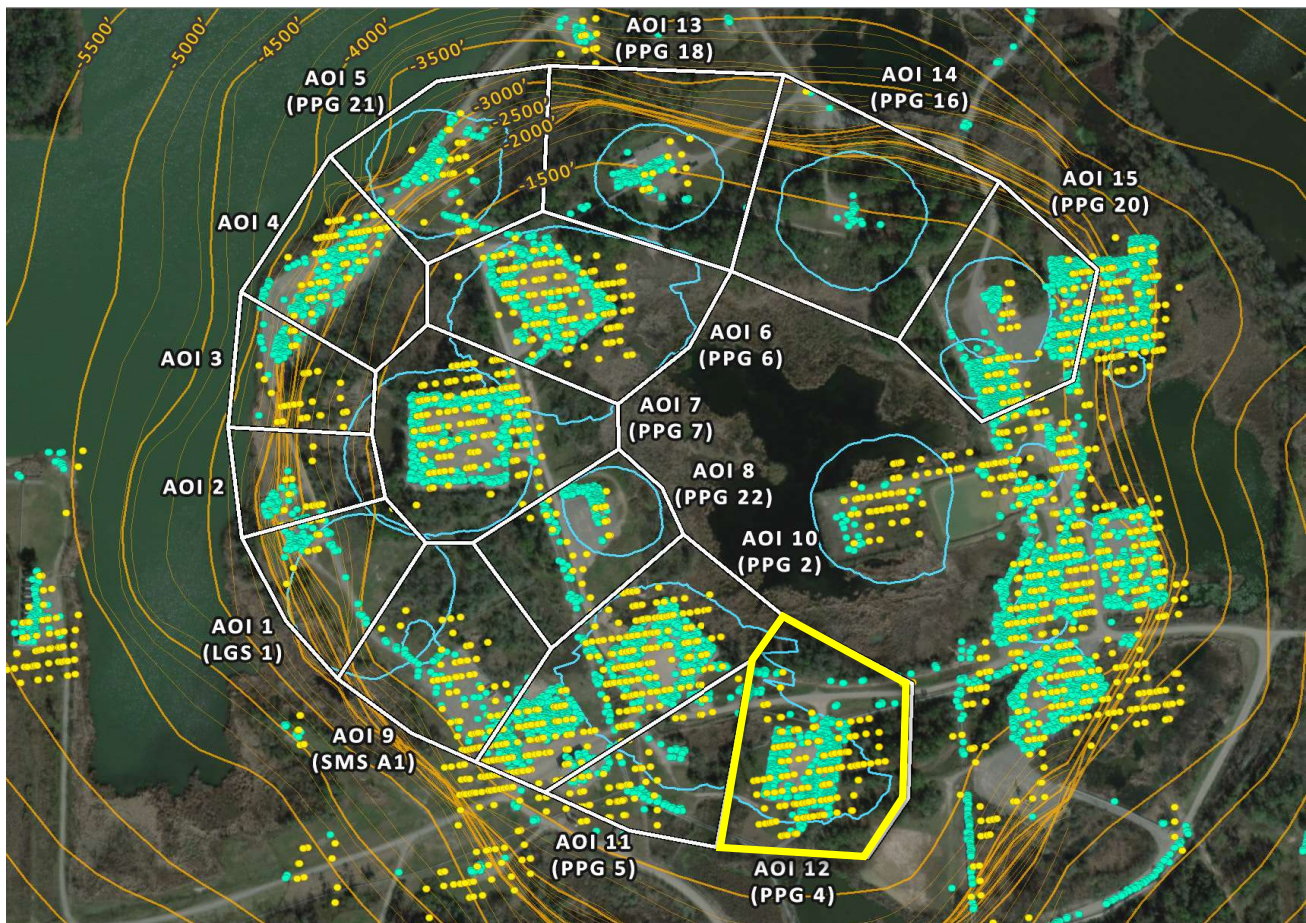


	Nonlinear Trend	Linear Trend
Velocity:	-0.46 in/yr	-0.54 in/yr
Acceleration:	+0.09 in/yr ²	0.00 in/yr ²

■ LOS Displacement Measurement

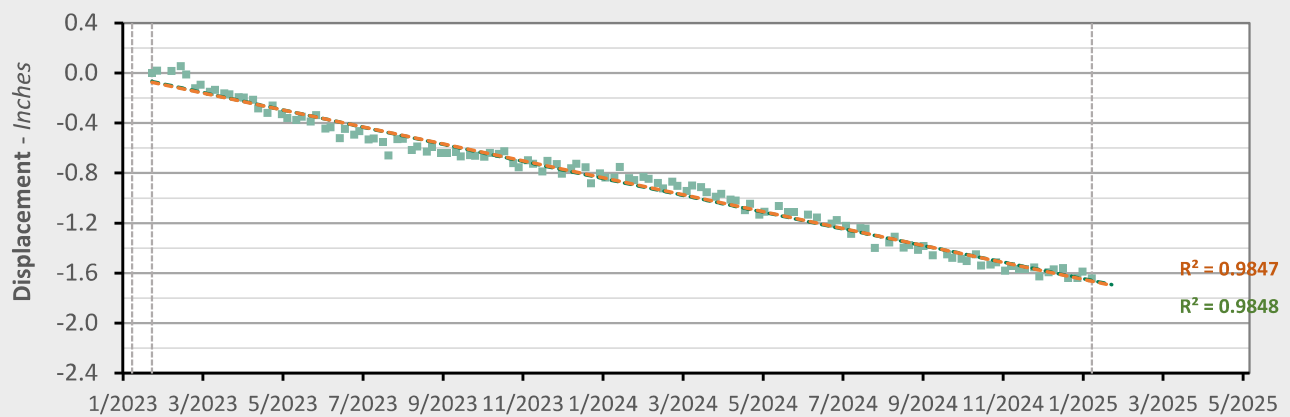
--- Nonlinear Trend Line
(Quadratic Regression)--- Linear Trend Line
(Linear Regression)

AOI 12 (PPG 4) - Location Map



AOI 12 (PPG 4) - Displacement Time Series

TSX/PAZ (1/8/2025) Point Count: 551



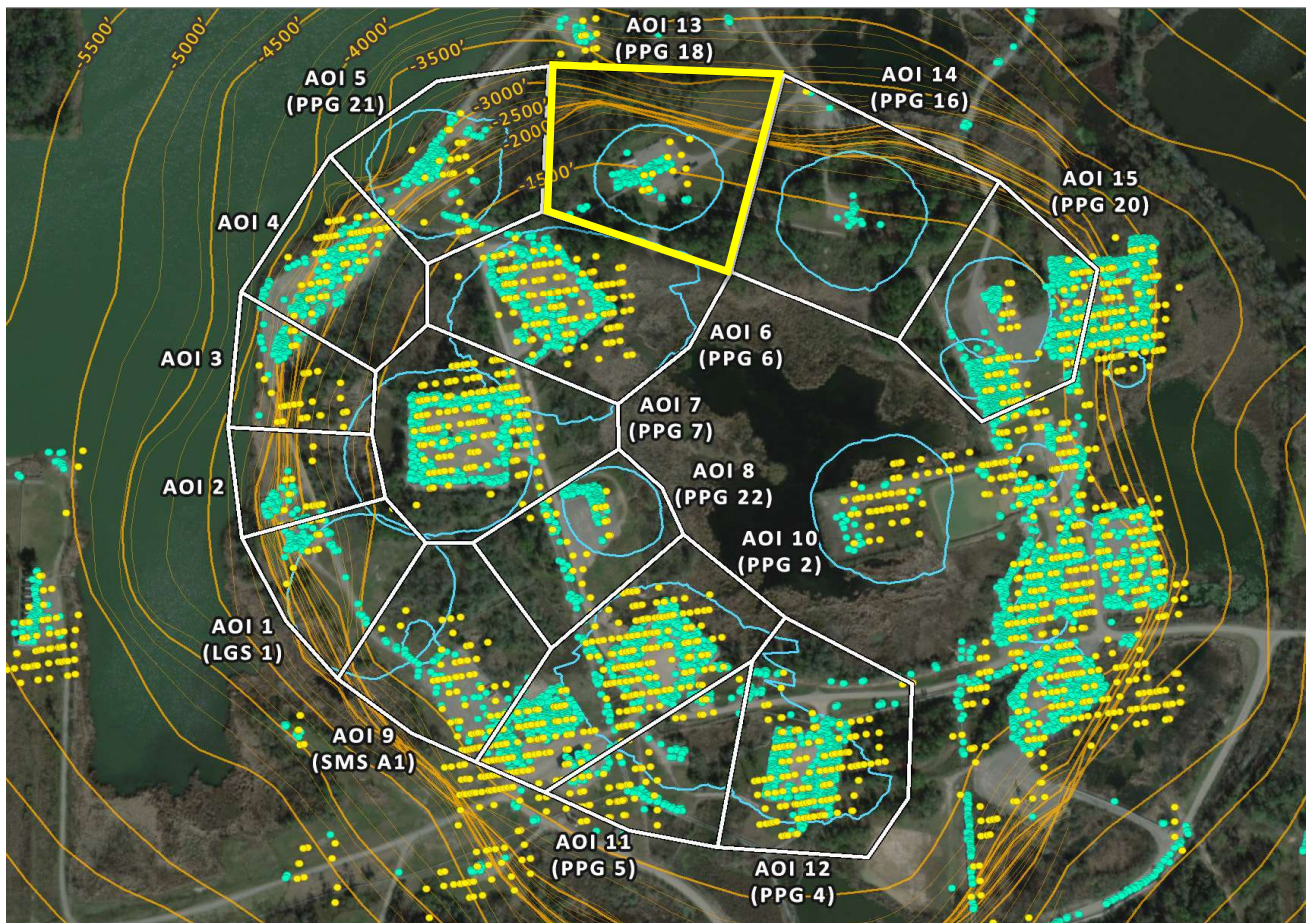
	Nonlinear Trend	Linear Trend
Velocity:	-0.79 in/yr	-0.81 in/yr
Acceleration:	+0.02 in/yr ²	0.00 in/yr ²

■ LOS Displacement Measurement

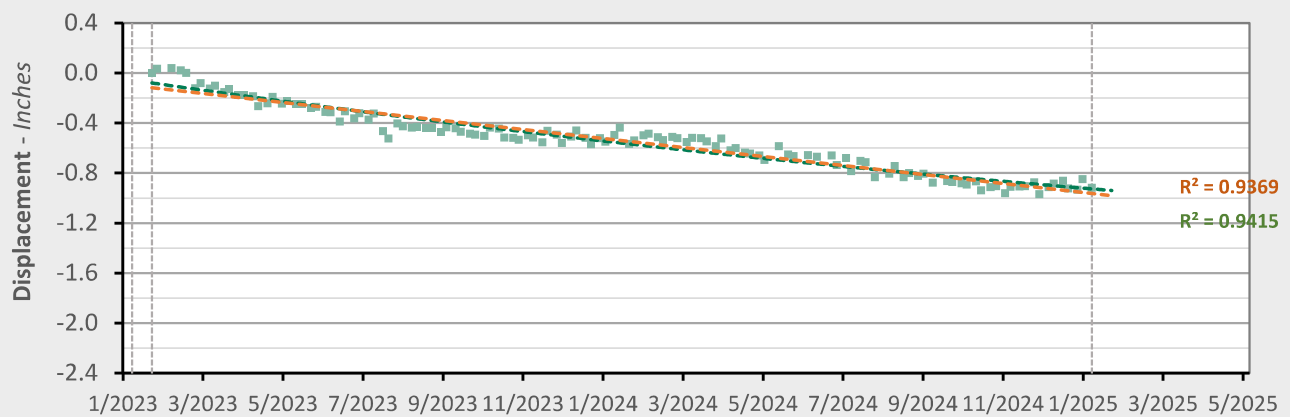
--- Nonlinear Trend Line
(Quadratic Regression)

--- Linear Trend Line
(Linear Regression)

AOI 13 (PPG 18) - Location Map



AOI 13 (PPG 18) - Displacement Time Series TSX/PAZ (1/8/2025) Point Count: 107

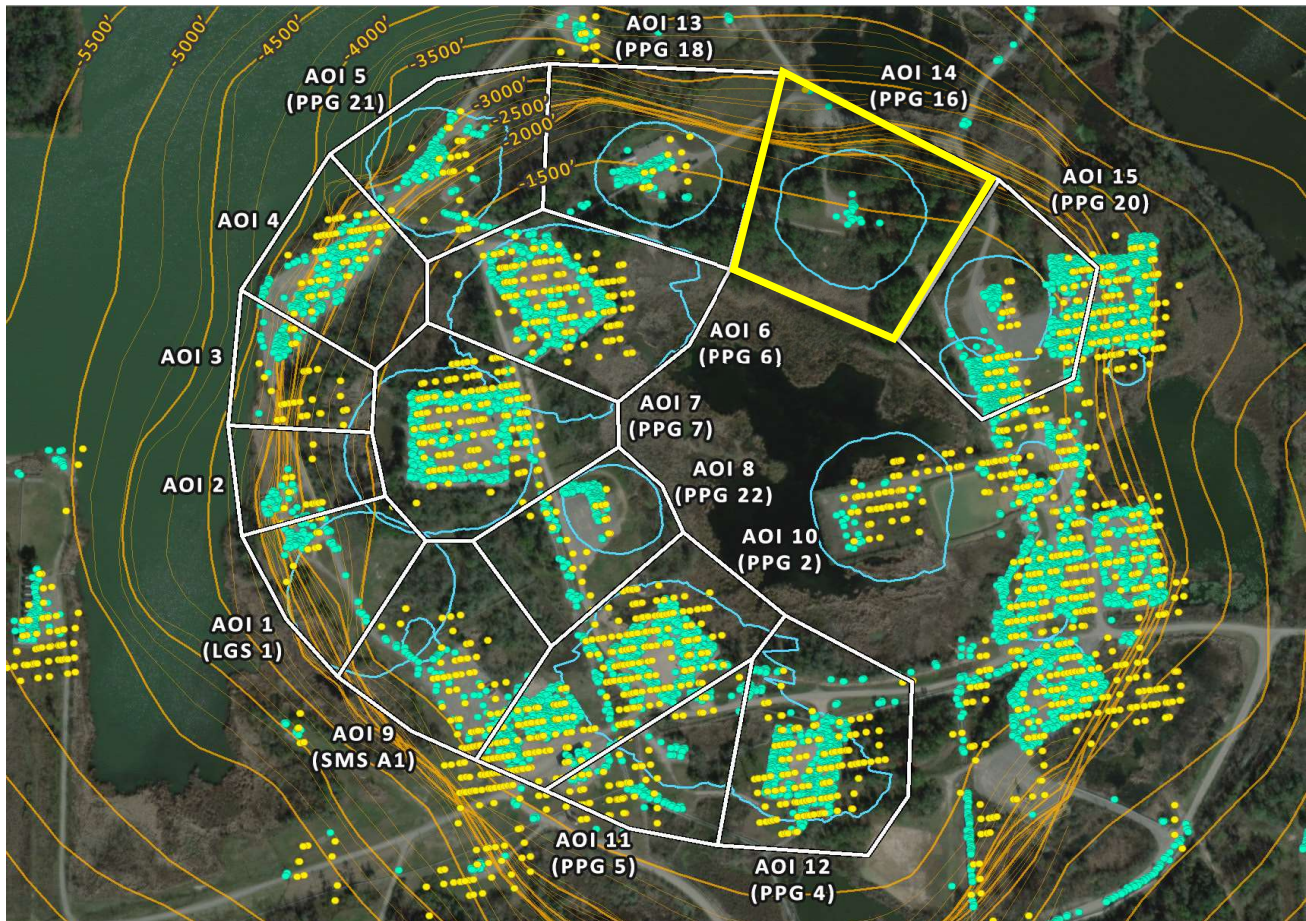


	Nonlinear Trend	Linear Trend
Velocity:	-0.32 in/yr	-0.43 in/yr
Acceleration:	+0.12 in/yr ²	0.00 in/yr ²

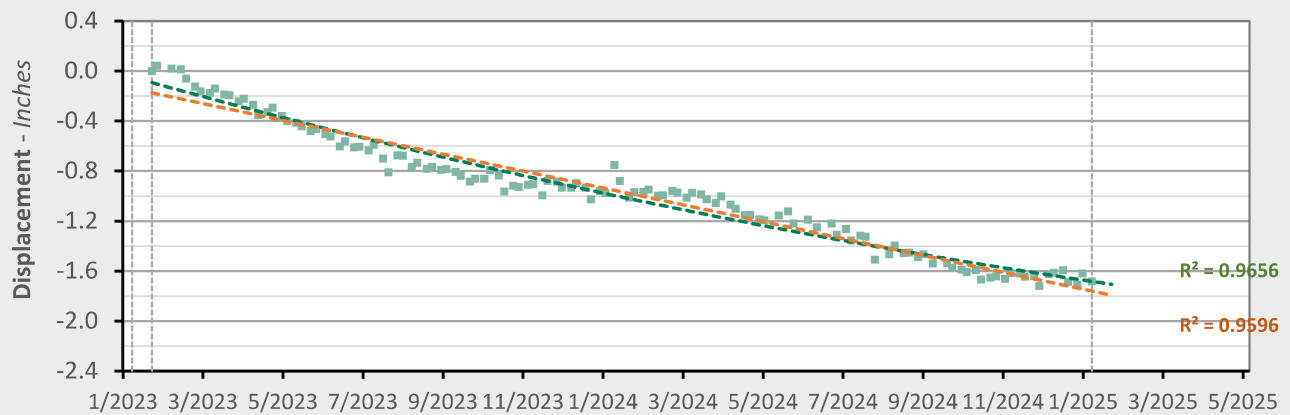
■ LOS Displacement Measurement

--- Nonlinear Trend Line
(Quadratic Regression)--- Linear Trend Line
(Linear Regression)

AOI 14 (PPG 16) - Location Map



AOI 14 (PPG 16) - Displacement Time Series TSX/PAZ (1/8/2025) Point Count: 23



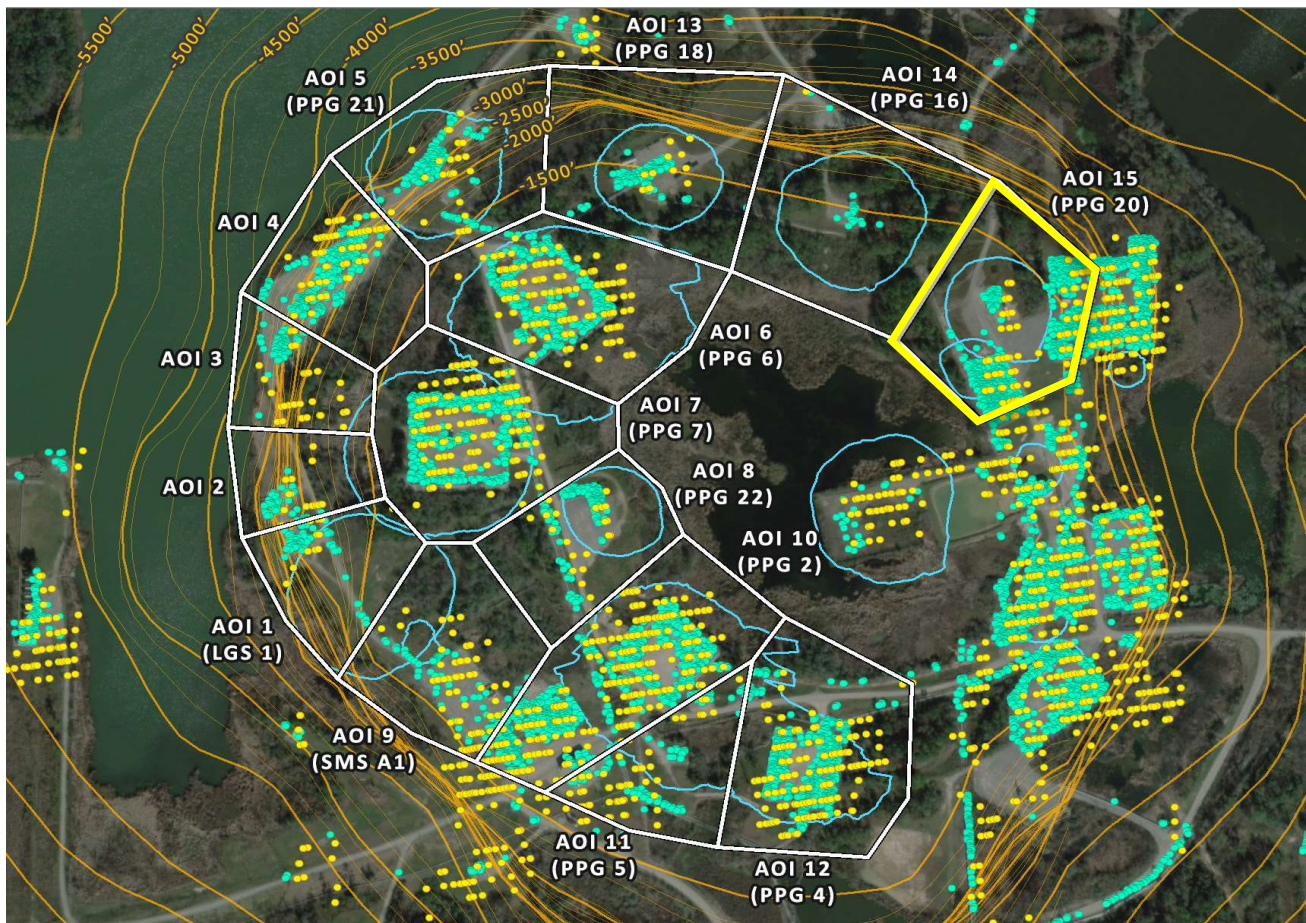
	Nonlinear Trend	Linear Trend
Velocity:	-0.57 in/yr	-0.81 in/yr
Acceleration:	+0.25 in/yr ²	0.00 in/yr ²

■ LOS Displacement Measurement

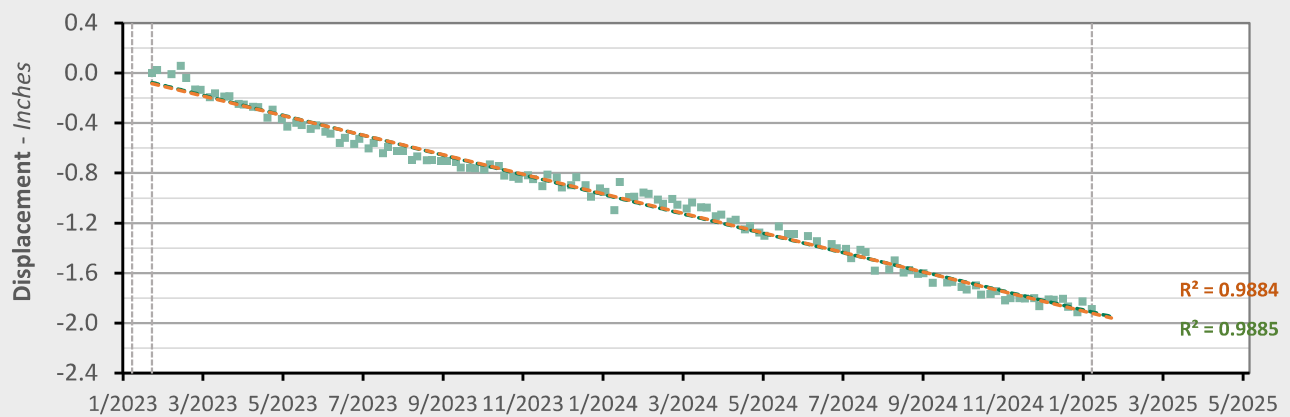
--- Nonlinear Trend Line
(Quadratic Regression)

--- Linear Trend Line
(Linear Regression)

AOI 15 (PPG 20) - Location Map



AOI 15 (PPG 20) - Displacement Time Series TSX/PAZ (1/8/2025) Point Count: 743



	Nonlinear Trend	Linear Trend
Velocity:	-0.91 in/yr	-0.94 in/yr
Acceleration:	+0.03 in/yr ²	0.00 in/yr ²

■ LOS Displacement Measurement

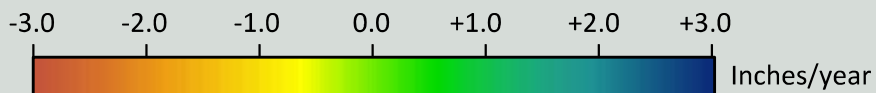
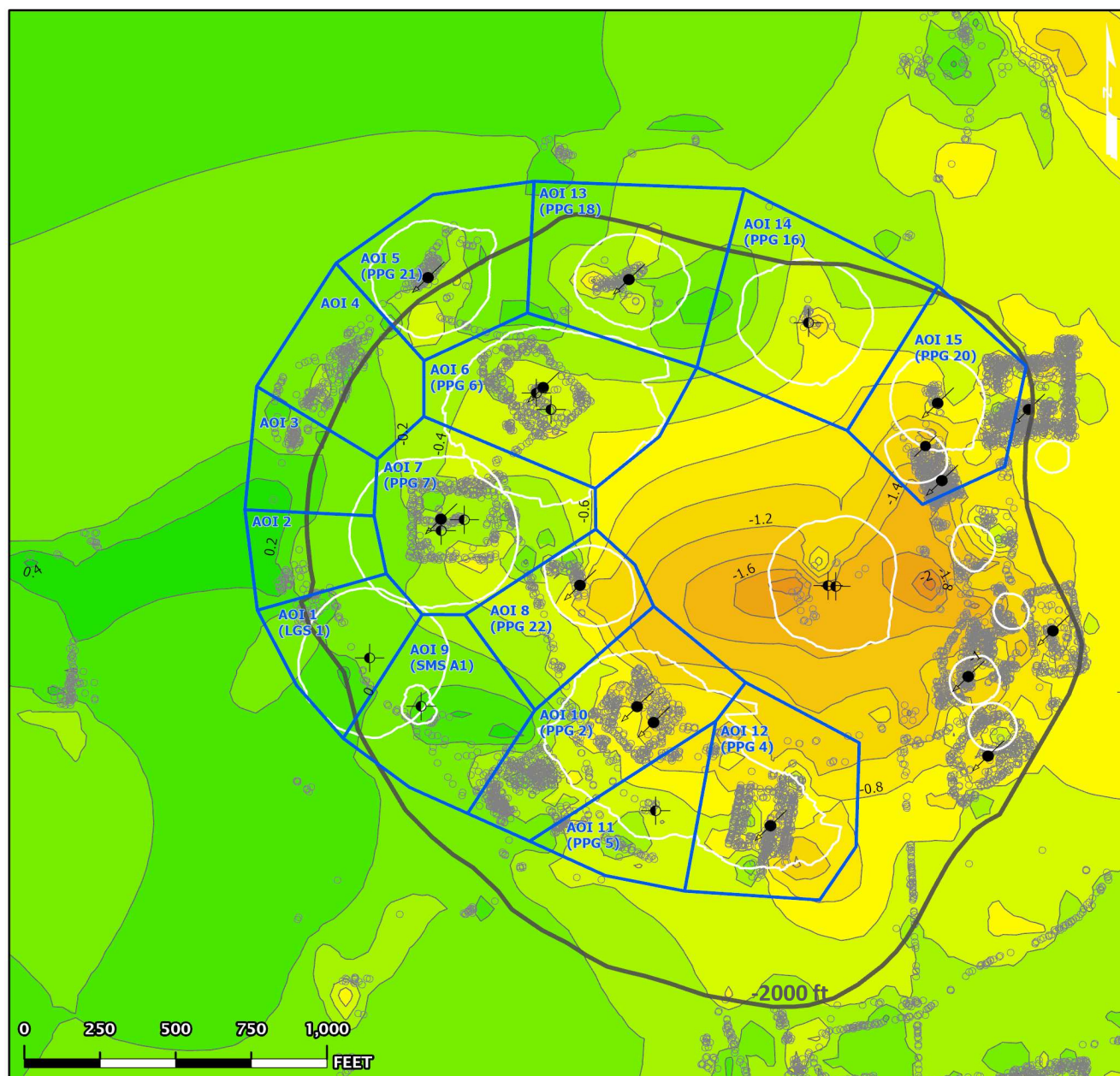
--- Nonlinear Trend Line
(Quadratic Regression)

--- Linear Trend Line
(Linear Regression)

TSX/PAZ Data (01/24/2023 - 01/08/2025)

Nonlinear Velocity Contours

As of date: 01/08/2025



- AOI Boundary InSAR LOS Measurement Point Contour (0.2)
Historical Cavern Extent Top of Dome (-2000 ft Contour)

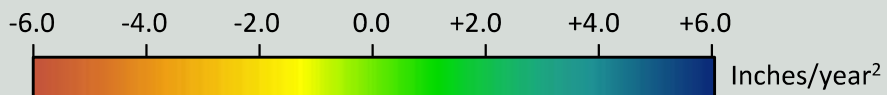
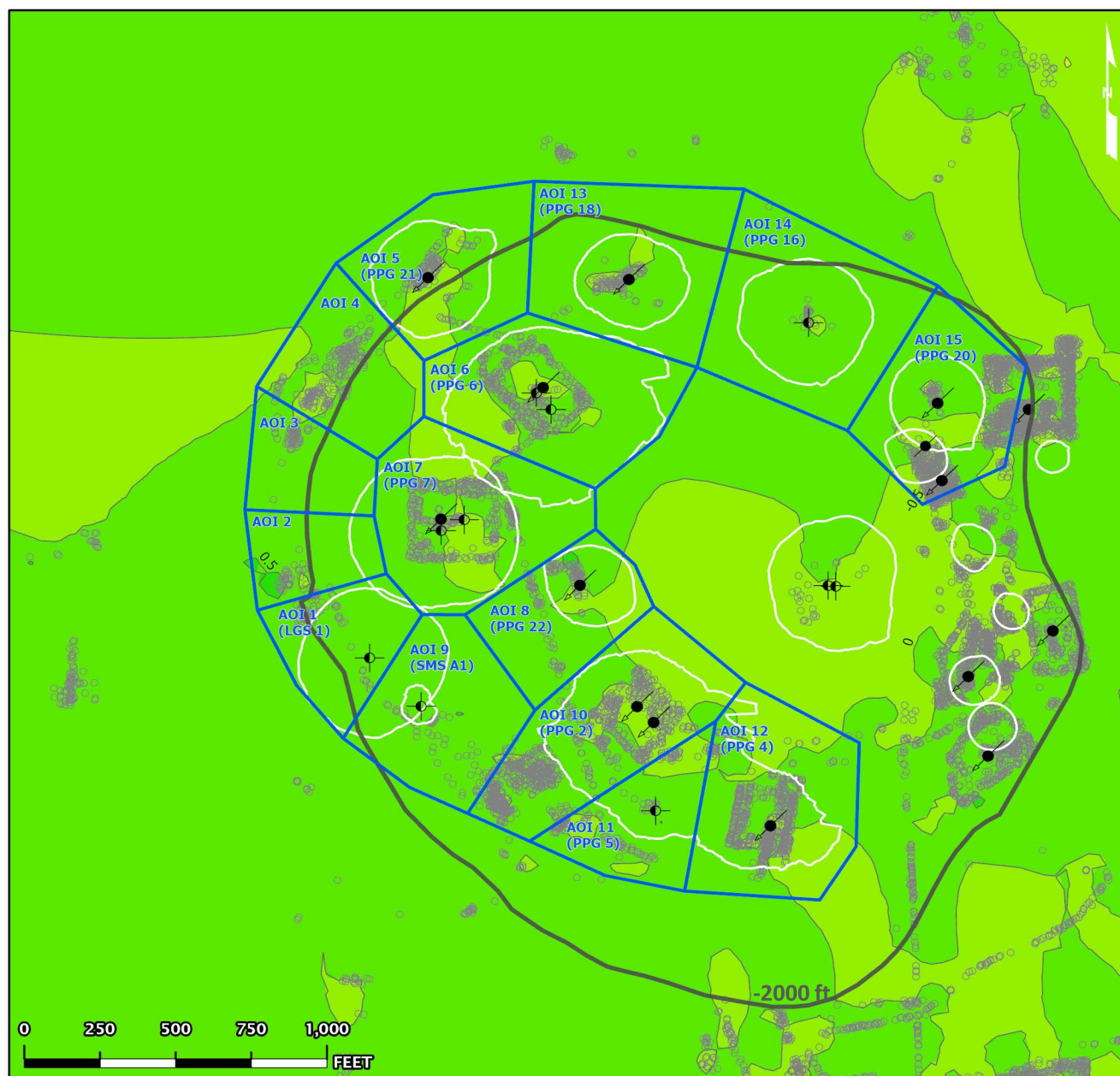
Cavern Well Surface Locations

- 09 - Active - Injection 29 - Dry and Plugged

TSX/PAZ Data (01/24/2023 - 01/08/2025)

Nonlinear Acceleration Contours

Date range: 01/24/2023 - 01/08/2025



Legend:

- AOI Boundary
- InSAR LOS Measurement Point
- Contour (0.5)
- Historical Cavern Extent
- Top of Dome (-2000 ft Contour)

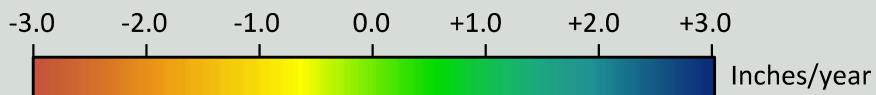
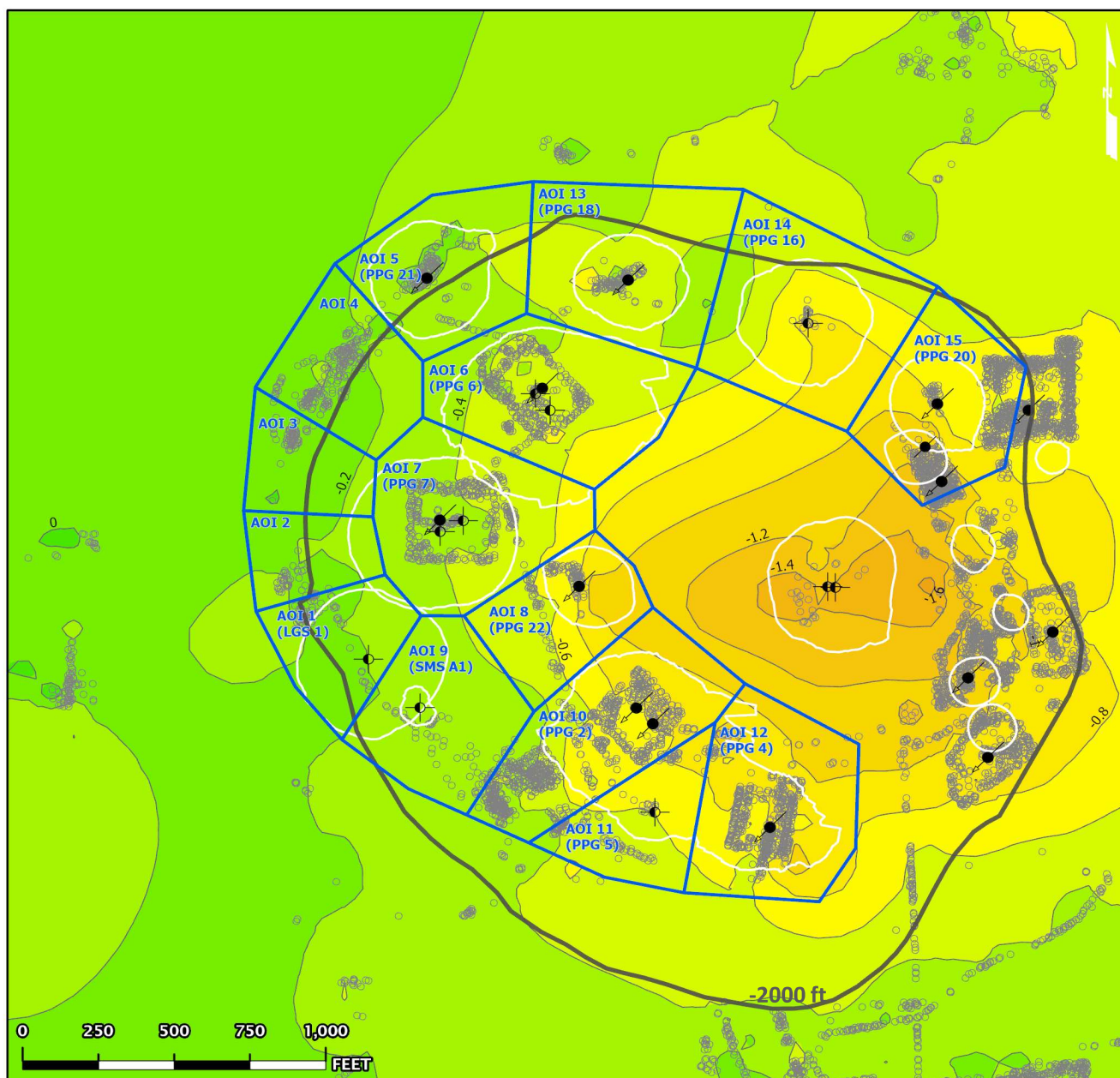
Cavern Well Surface Locations

09 - Active - Injection 29 - Dry and Plugged

TSX/PAZ Data (01/24/2023 - 01/08/2025)

Linear Velocity Contours

Date range: 01/24/2023 - 01/08/2025



 AOI Boundary ○ InSAR LOS Measurement Point — Contour (0.2)
 Historical Cavern Extent Top of Dome (-2000 ft Contour)

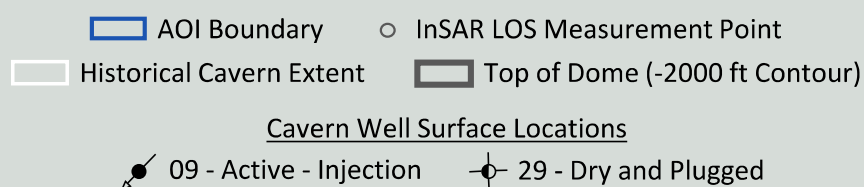
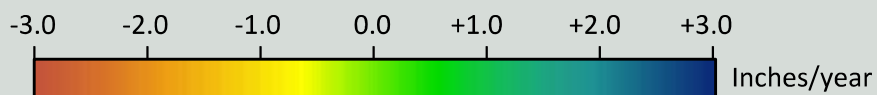
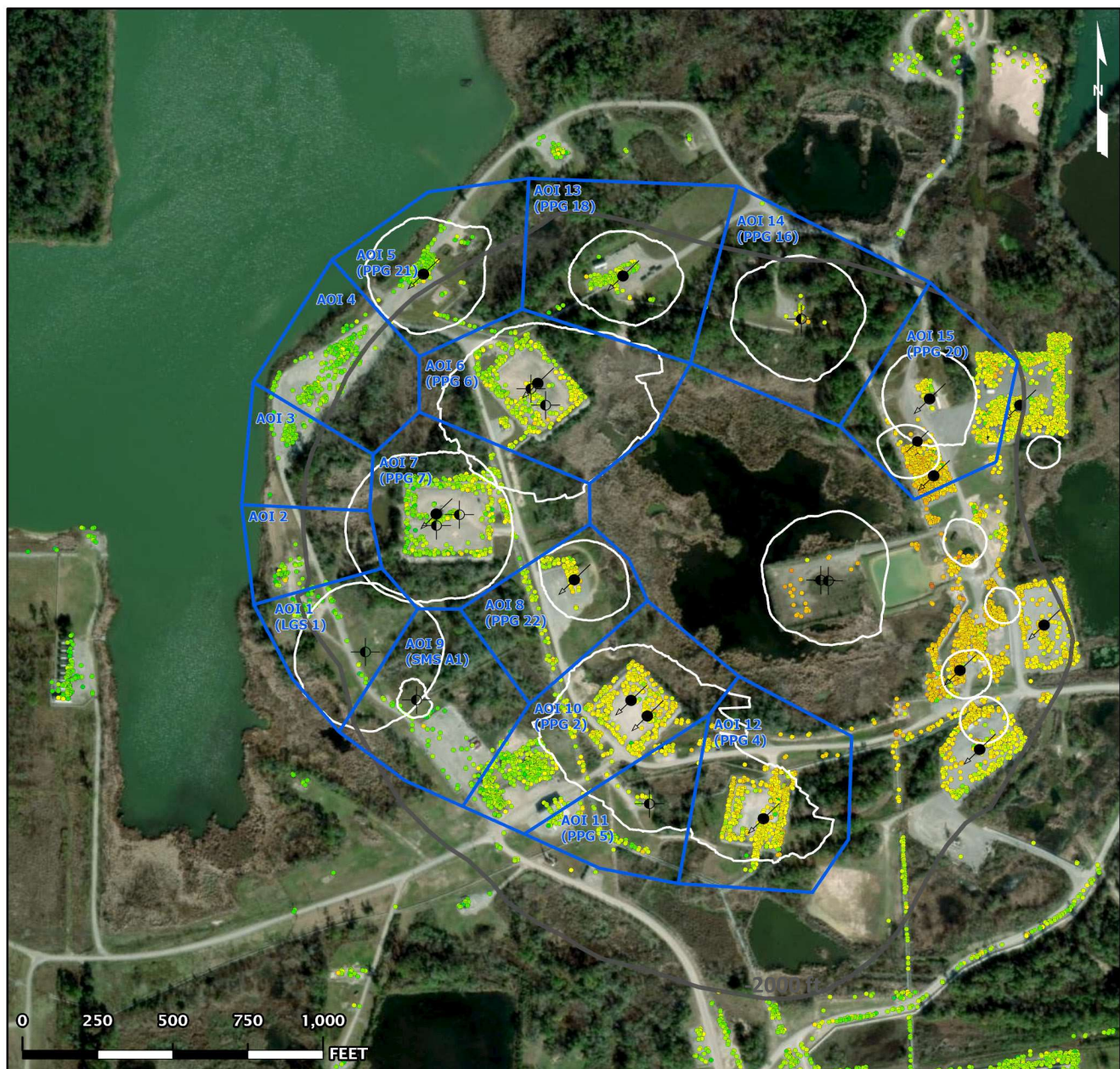
Cavern Well Surface Locations

● 09 - Active - Injection ● 29 - Dry and Plugged

TSX/PAZ Data (01/24/2023 - 01/08/2025)

Nonlinear Velocity Data Points

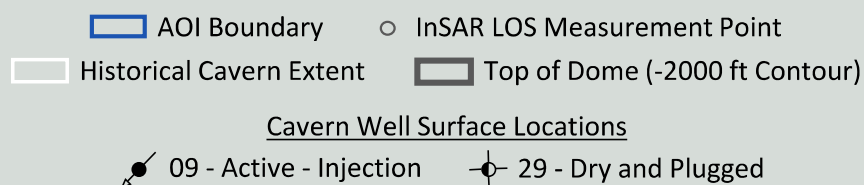
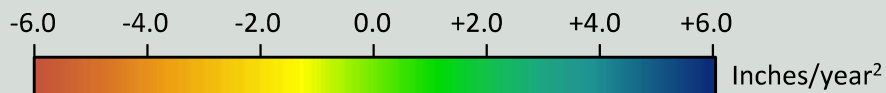
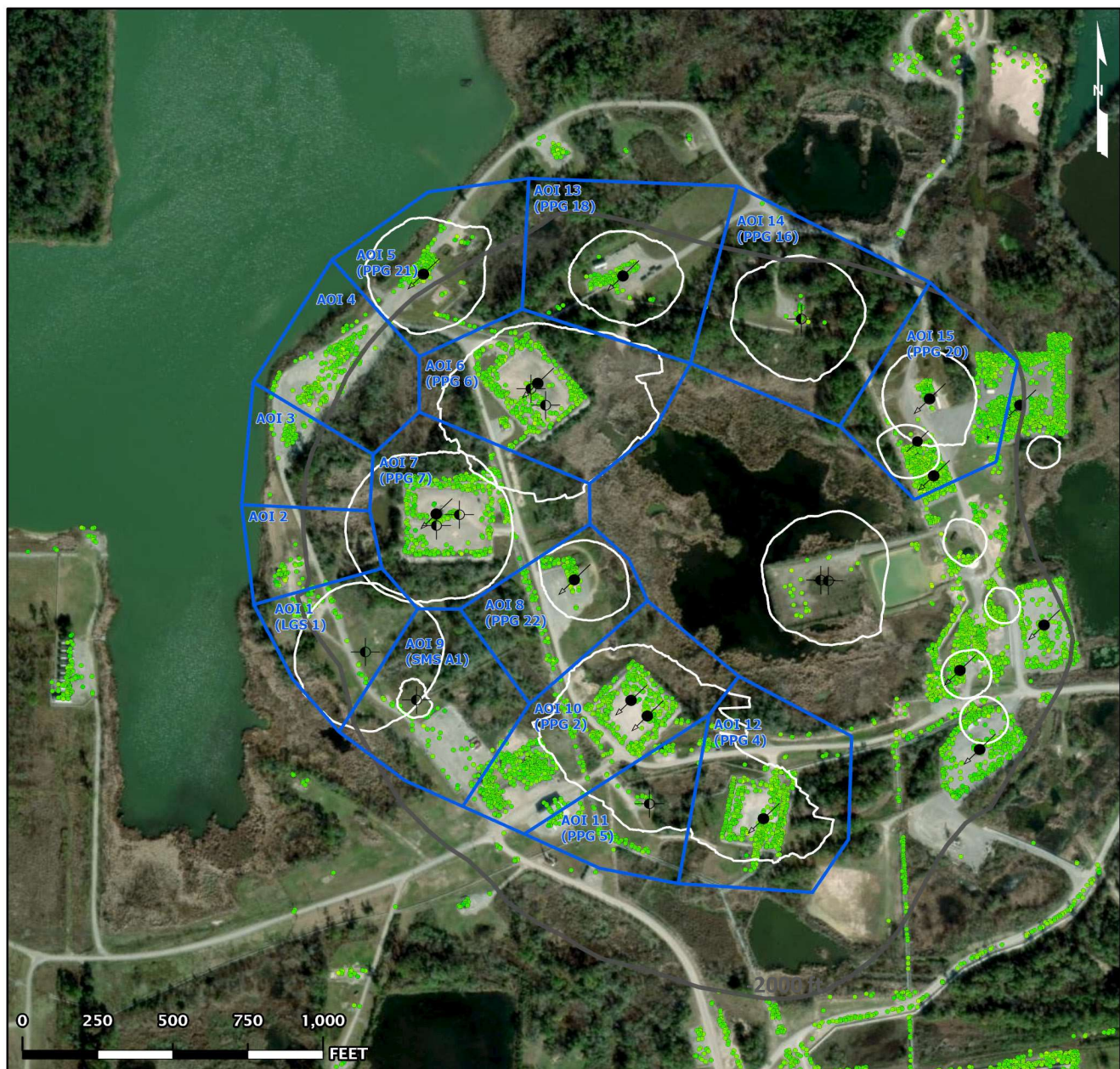
As of date: 01/08/2025



TSX/PAZ Data (01/24/2023 - 01/08/2025)

Nonlinear Acceleration Data Points

Date range: 01/24/2023 - 01/08/2025



TSX/PAZ Data (01/24/2023 - 01/08/2025)

Linear Velocity Data Points

Date range: 01/24/2023 - 01/08/2025

