

TSX/PAZ Satellite Update
InSAR Subsidence
October 26, 2023

Lonquist comment:

Attached is the most recent TSX/PAZ data update that was shown yesterday on our call. The TSX satellite passed by Sulphur on Thursday October 26. We received the data Saturday and noted that the latest data point had returned to trend in AOIs 1 & 2. No indication of trend deviation was noted in the new data point in the other AOIs.

As discussed yesterday, the calculation of both linear and quadratic trends for the TSX/PAZ dataset will be included in the revised report template that is being developed. R-squared values will also be labeled for each calculated trend.



TSX/PAZ Satellite Update

Continuous InSAR Monitoring of
Ground Displacement
Near Western Caverns and Dome Flank

Sulphur Mines Salt Dome

Prepared for:
Westlake Chemical

Prepared by:
Lonquist & Co., LLC
8591 United Plaza Blvd.
Suite 280
Baton Rouge, LA 70809



Date Signed: October 31, 2023
Austin, Texas

Nathaniel L. Byars, P.E. Principal
Engineer
Louisiana License No. 40697

Dataset

Satellite Source

TerraSAR-X - PAZ Constellation

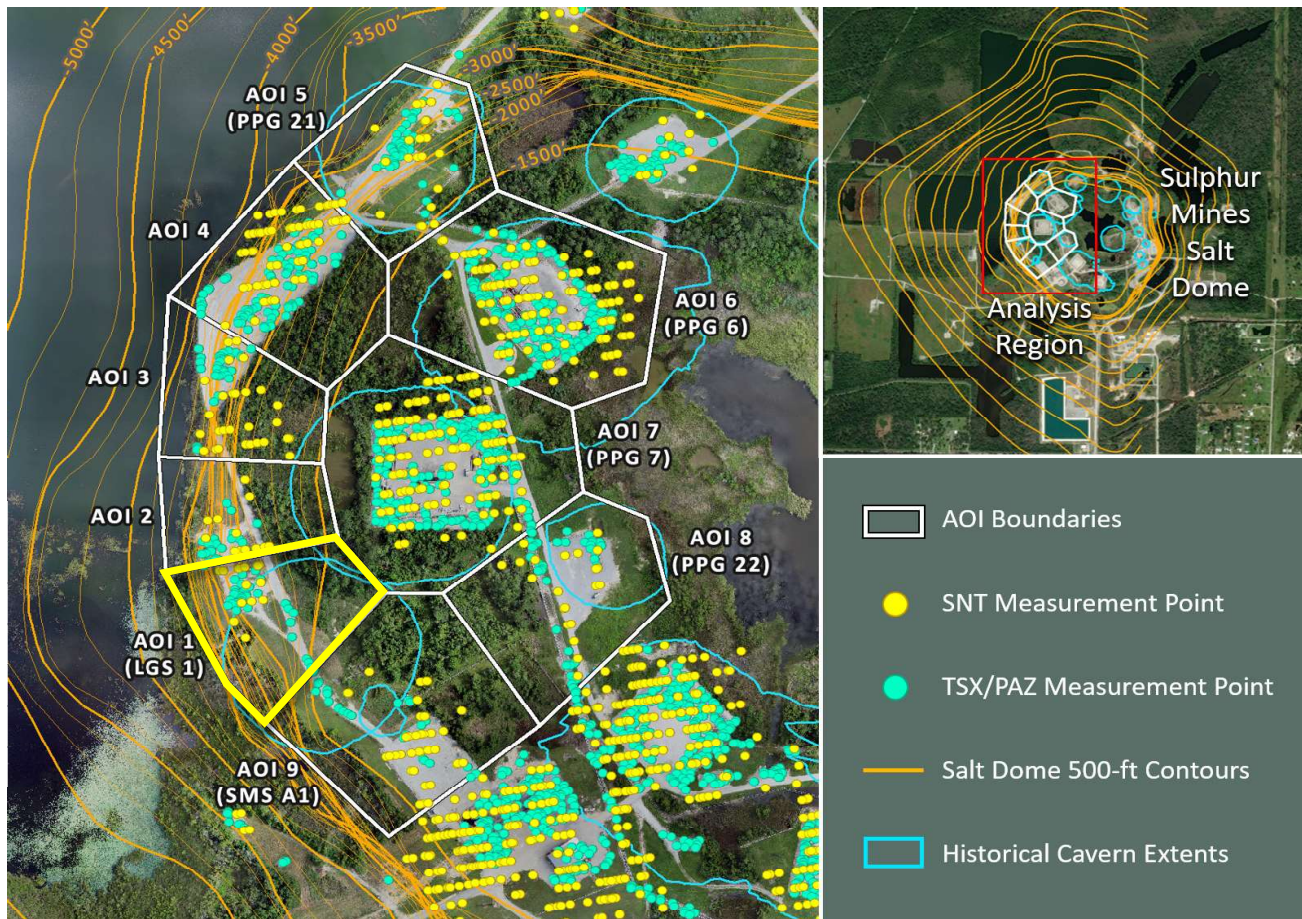
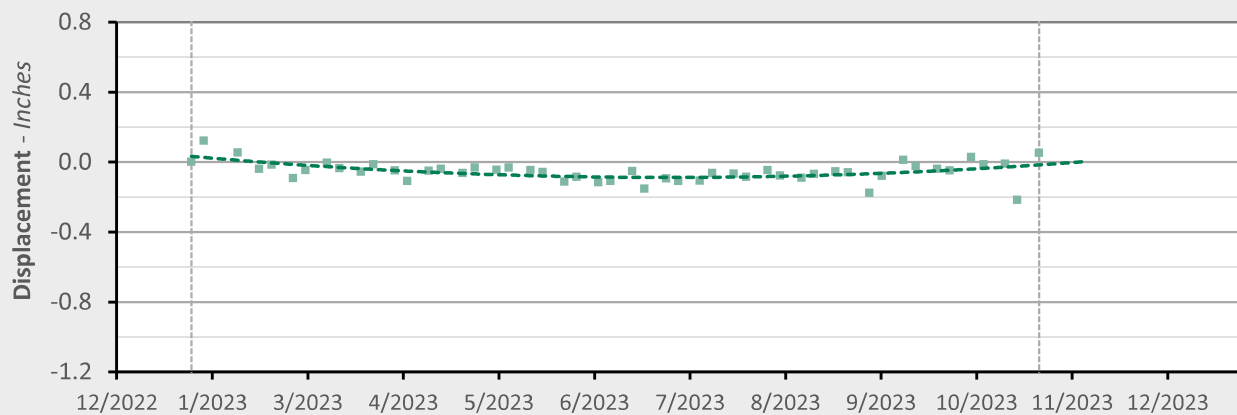
Most Recent Image Date

Thursday, October 26, 2023

Analysis Report Date:

October 31, 2023

AOI 1 (LGS 1) - Location Map

AOI 1 (LGS 1) - Displacement Time Series TSX/PAZ (10/26/2023) Point Count: 38

	As of 10/26/2023		Recent		Trend Change
Velocity:	+0.41 in/yr	N/A	in/yr	N/A	in/yr
Acceleration:	+1.33 in/yr ²	N/A	in/yr ²	N/A	in/yr ²

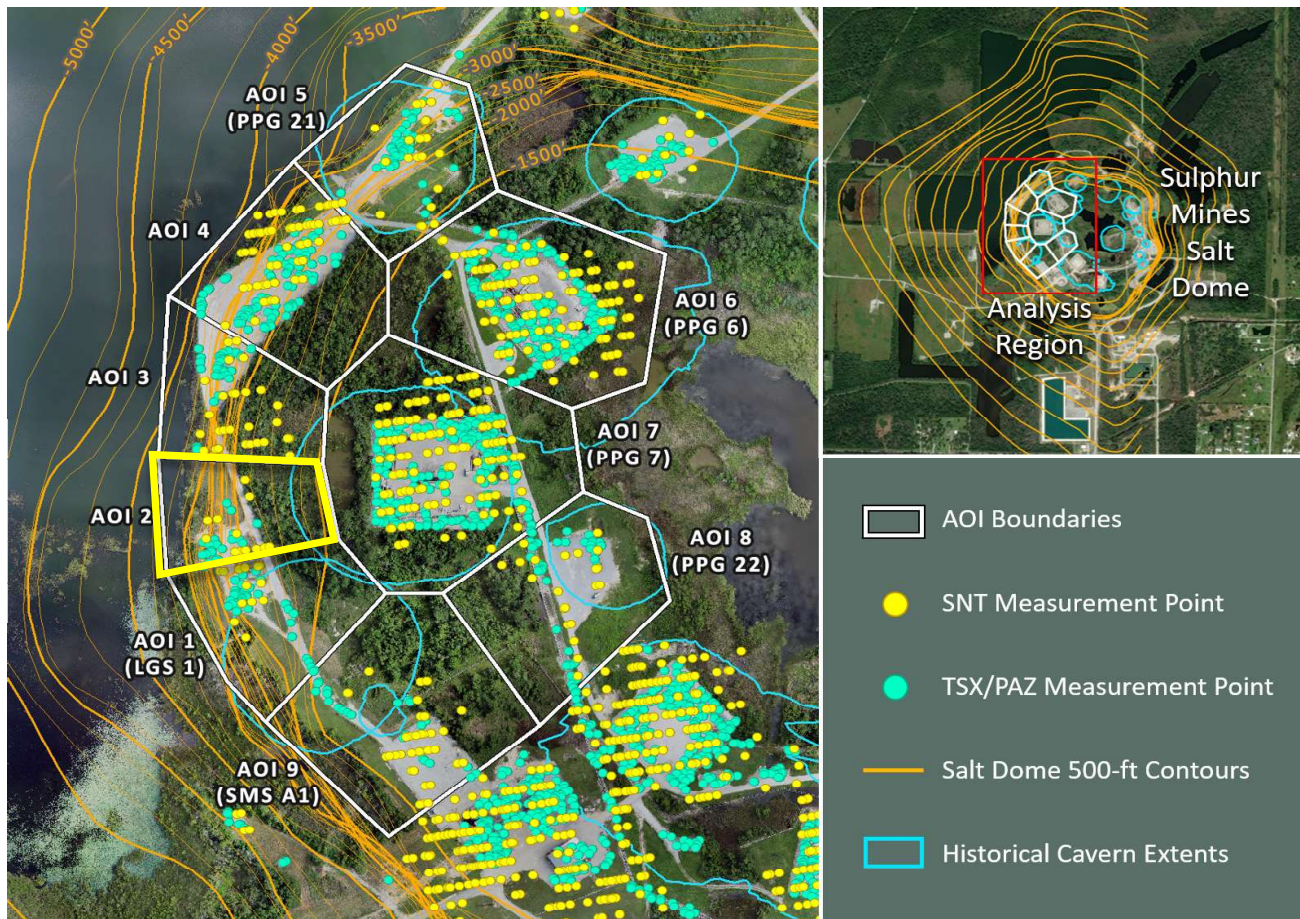
■ Historical LOS Displacement Measurement

--- Historical Trend Line (Quadratic Regression)

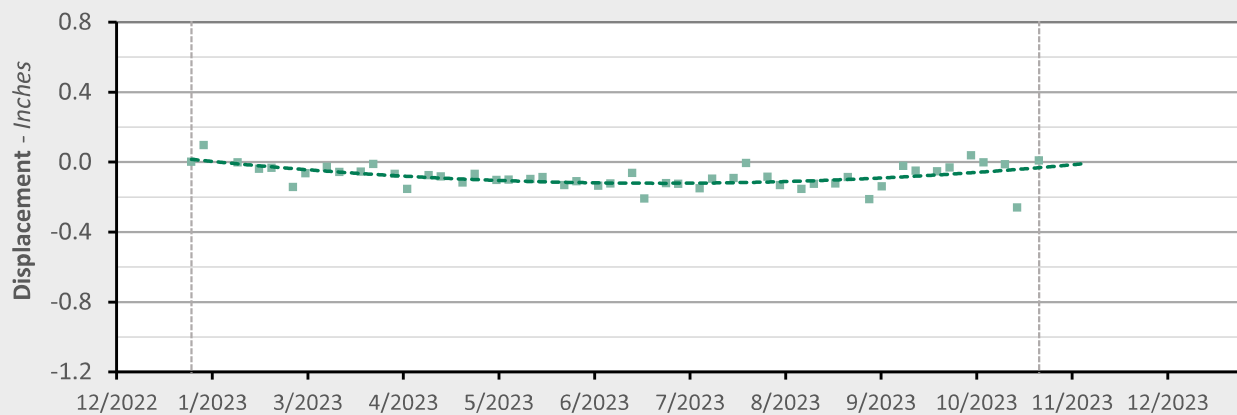
■ Recent LOS Displacement Measurement

--- Recent Trend Line (Quadratic Regression)

AOI 2 - Location Map



AOI 2 - Displacement Time Series

TSX/PAZ (10/26/2023) Point Count: **23**

	As of 10/26/2023		Recent		Trend Change
Velocity:	+0.50 in/yr	N/A	in/yr	N/A	in/yr
Acceleration:	+1.58 in/yr ²	N/A	in/yr ²	N/A	in/yr ²

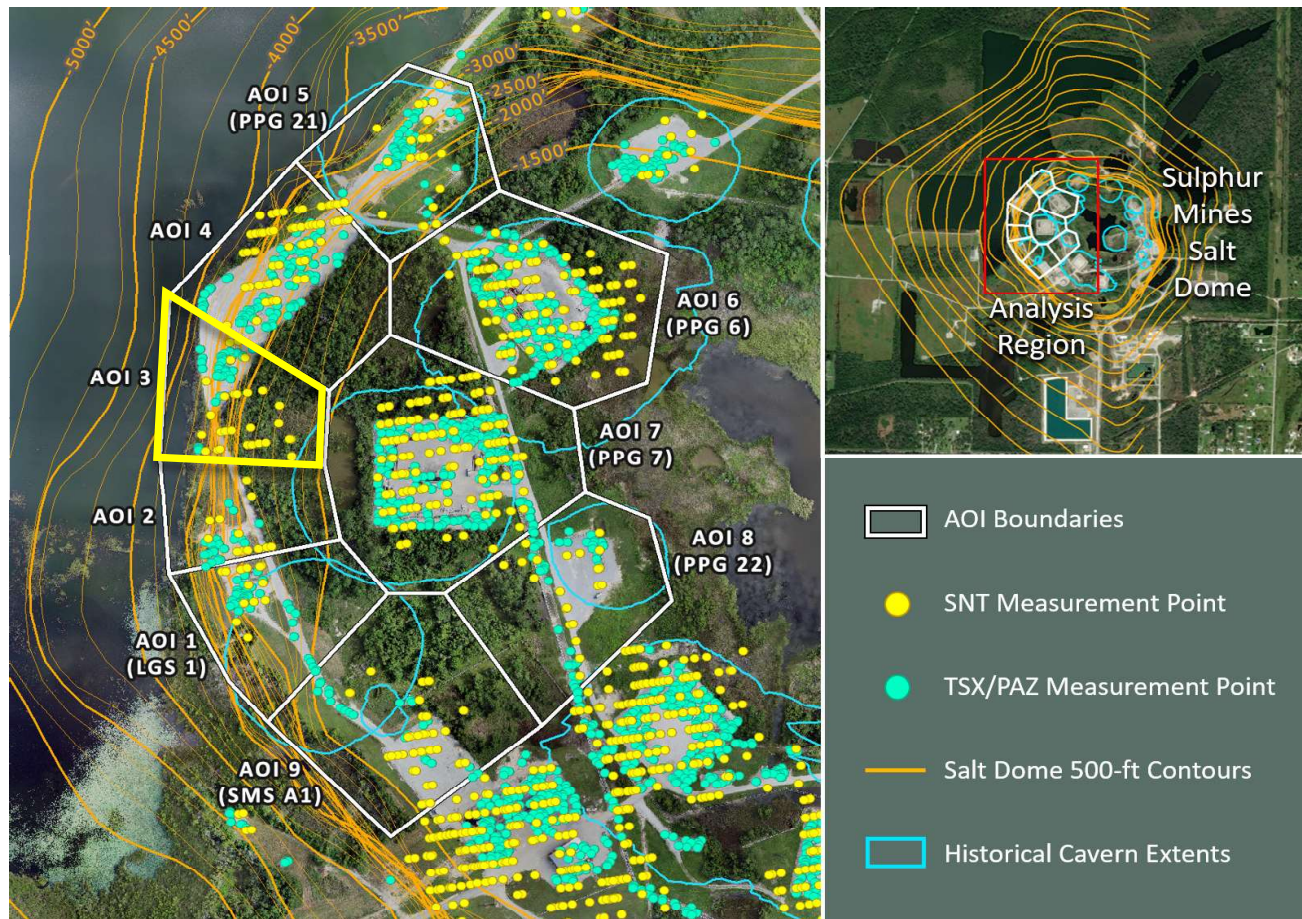
■ Historical LOS Displacement Measurement

--- Historical Trend Line (Quadratic Regression)

■ Recent LOS Displacement Measurement

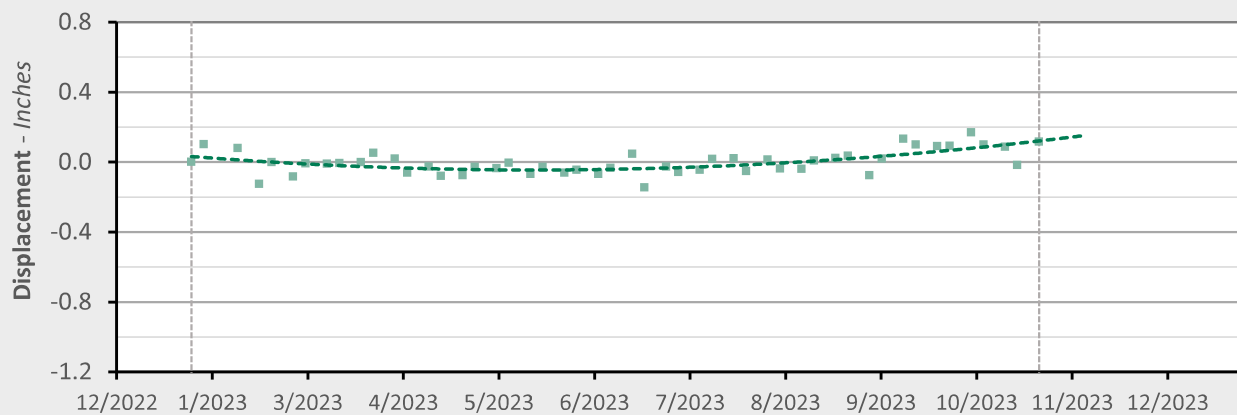
--- Recent Trend Line (Quadratic Regression)

AOI 3 - Location Map



AOI 3 - Displacement Time Series

TSX/PAZ (10/26/2023) Point Count: 39



	As of 10/26/2023		Recent		Trend Change
Velocity:	+0.71 in/yr	N/A	in/yr	N/A	in/yr
Acceleration:	+1.65 in/yr ²	N/A	in/yr ²	N/A	in/yr ²

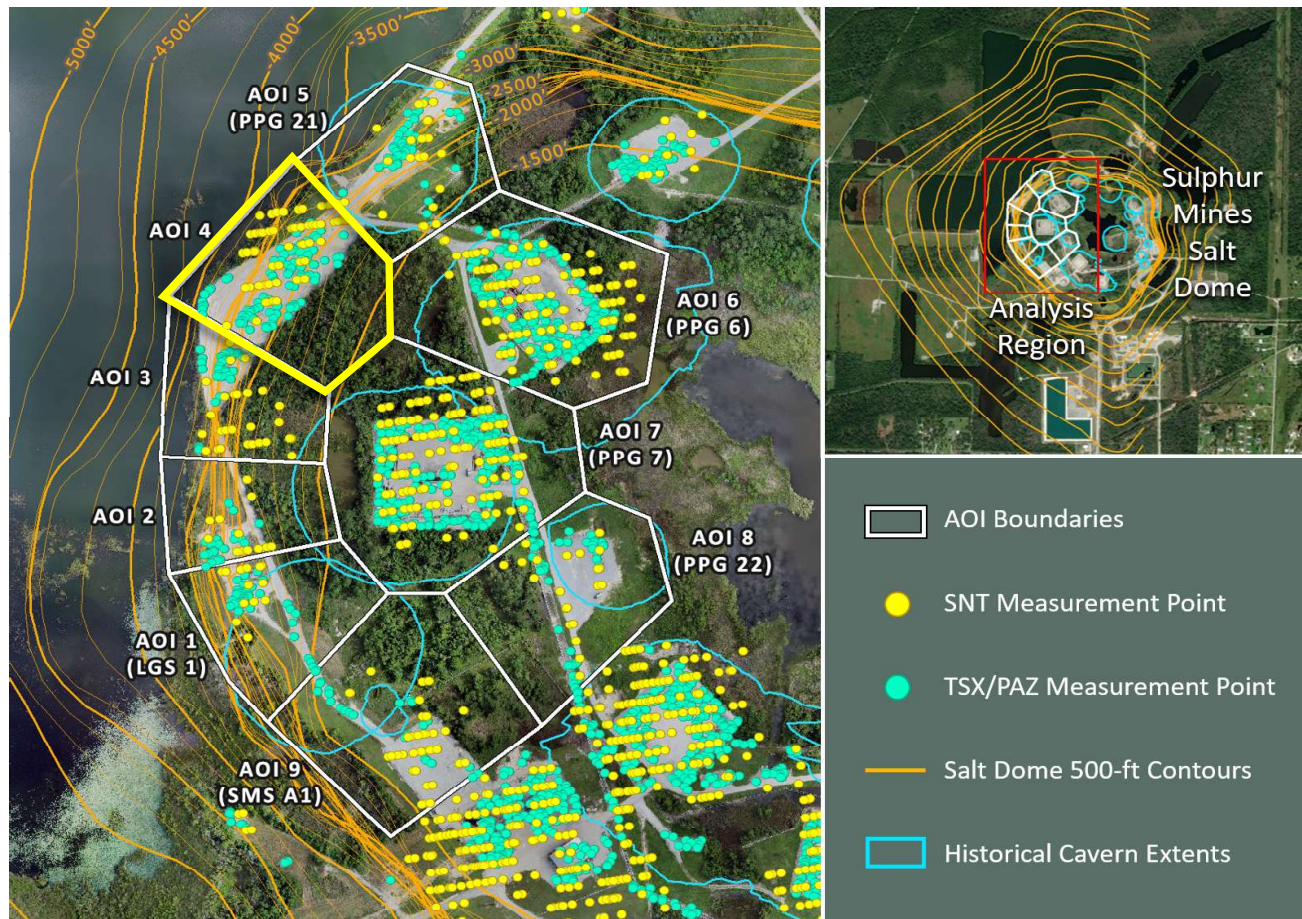
■ Historical LOS Displacement Measurement

--- Historical Trend Line (Quadratic Regression)

■ Recent LOS Displacement Measurement

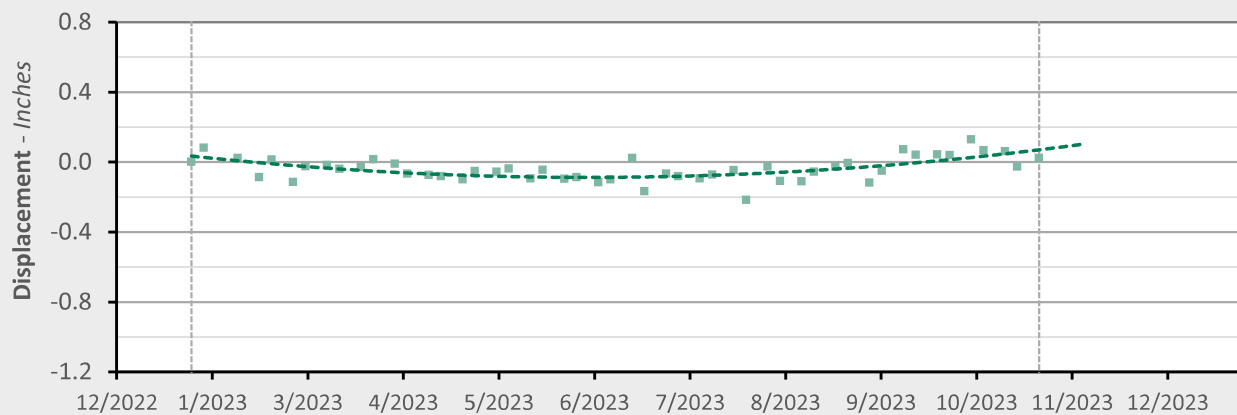
--- Recent Trend Line (Quadratic Regression)

AOI 4 - Location Map



AOI 4 - Displacement Time Series

TSX/PAZ (10/26/2023) Point Count: 103



	As of 10/26/2023		Recent		Trend Change
Velocity:	+0.75 in/yr	N/A	in/yr	N/A	in/yr
Acceleration:	+1.96 in/yr ²	N/A	in/yr ²	N/A	in/yr ²

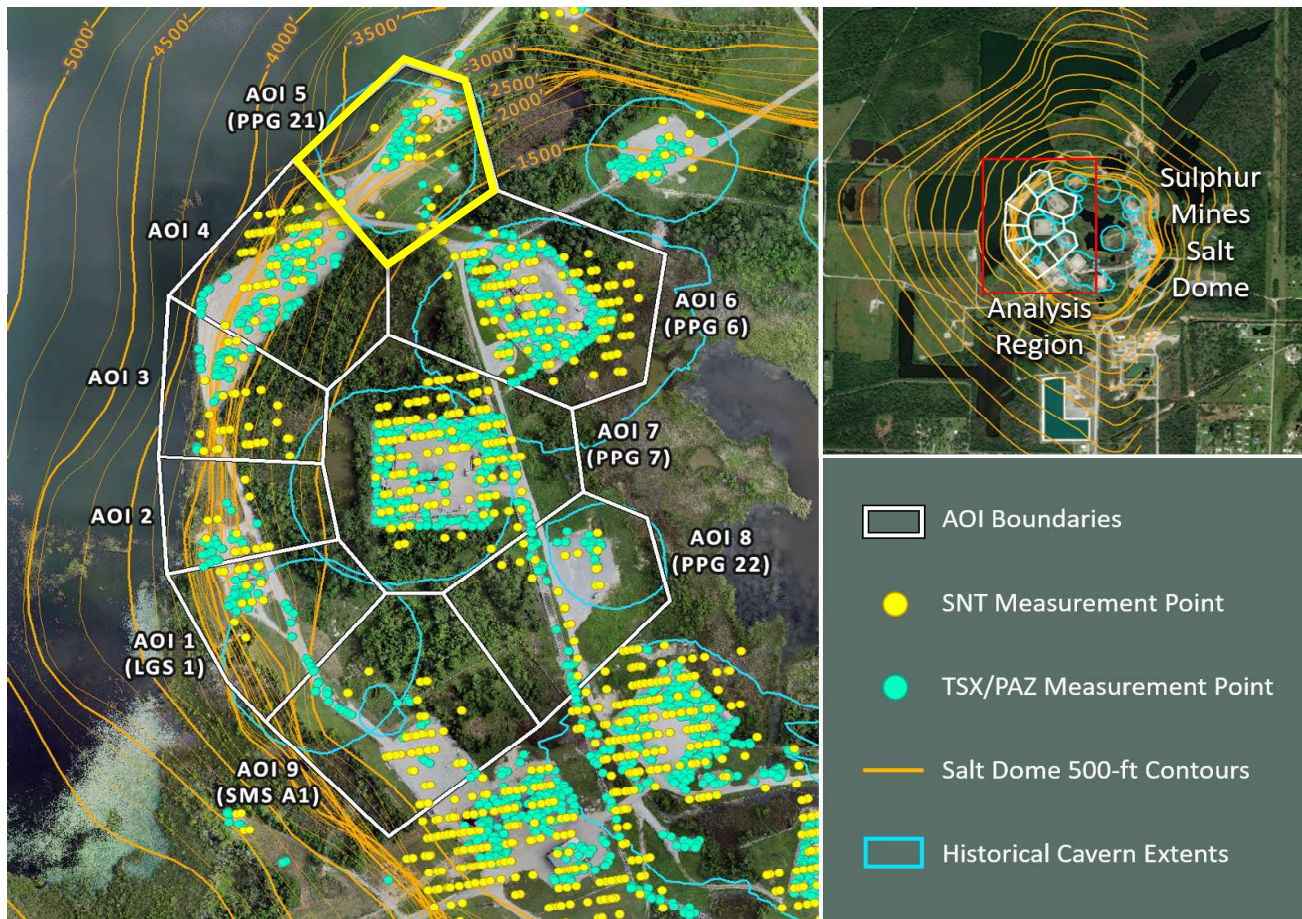
■ Historical LOS Displacement Measurement

--- Historical Trend Line (Quadratic Regression)

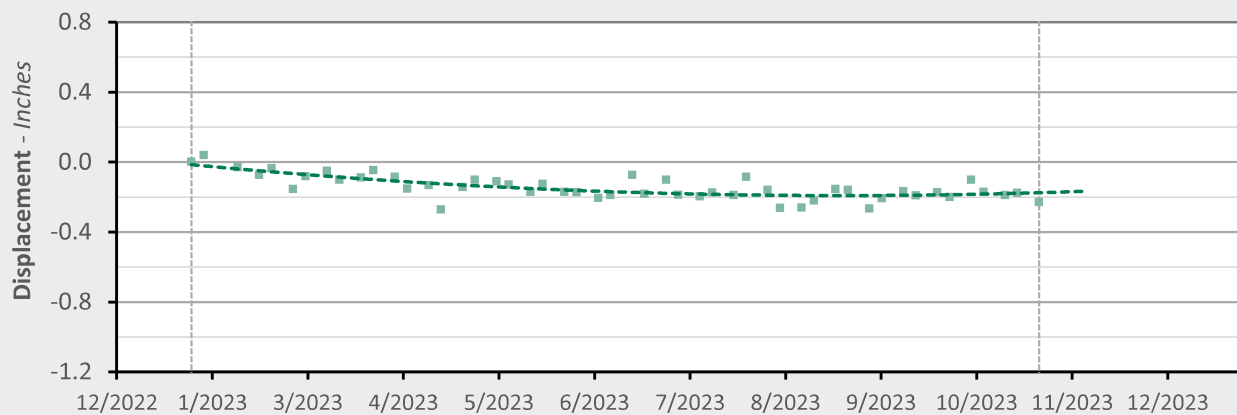
■ Recent LOS Displacement Measurement

--- Recent Trend Line (Quadratic Regression)

AOI 5 (PPG 21) - Location Map



AOI 5 (PPG 21) - Displacement Time Series TSX/PAZ (10/26/2023) Point Count: 46



	As of 10/26/2023		Recent		Trend Change
Velocity:	+0.16 in/yr	N/A	in/yr	N/A	in/yr
Acceleration:	+1.06 in/yr ²	N/A	in/yr ²	N/A	in/yr ²

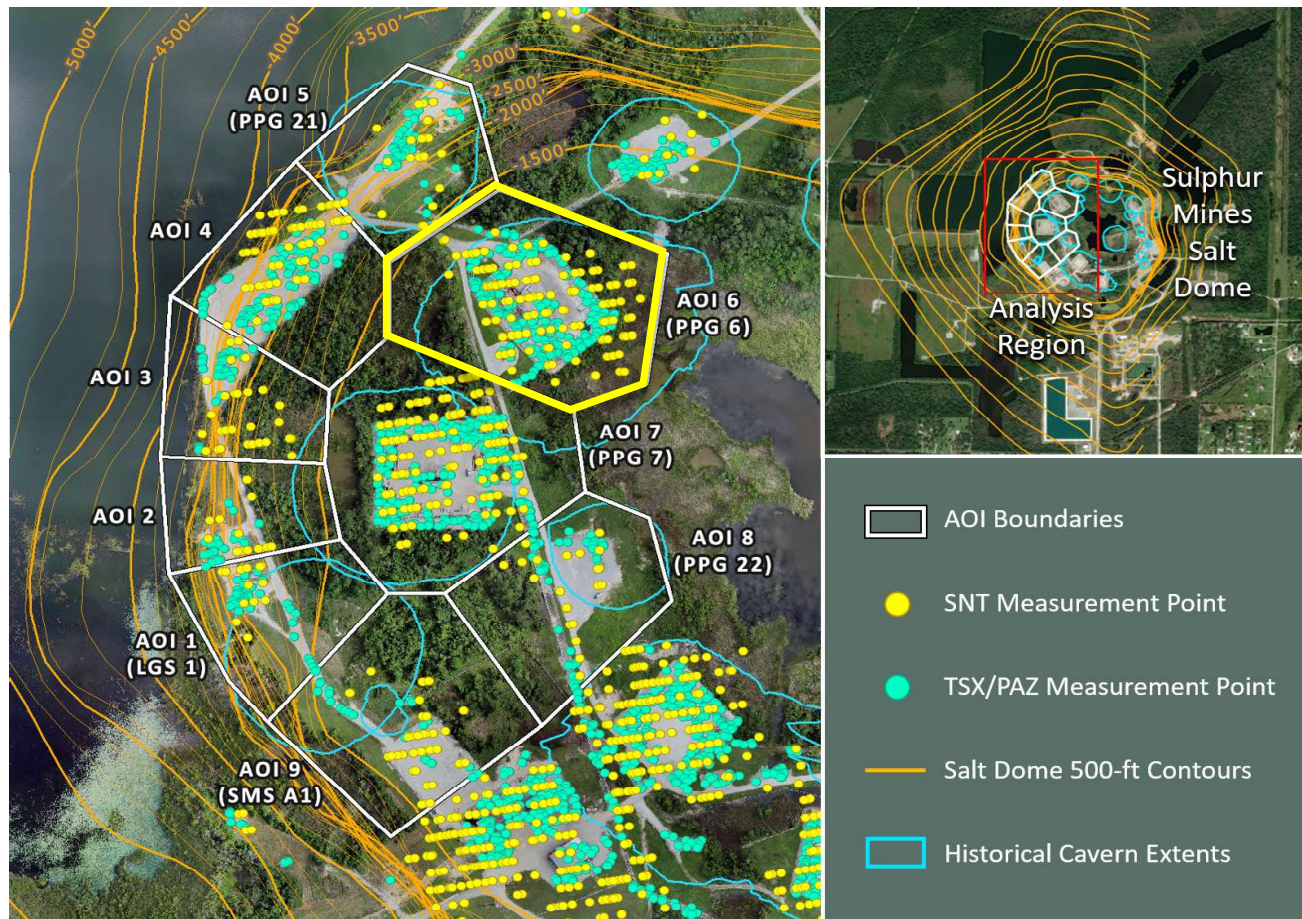
■ Historical LOS Displacement Measurement

--- Historical Trend Line (Quadratic Regression)

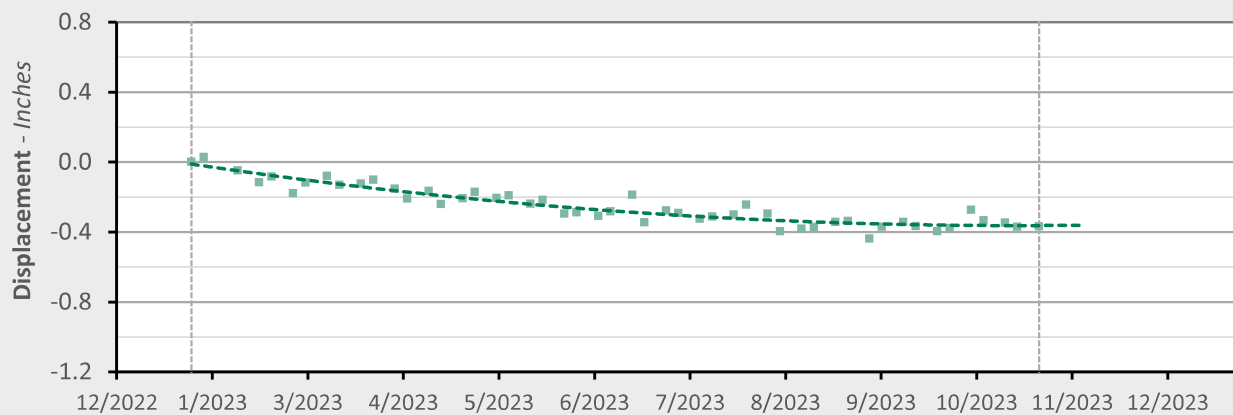
■ Recent LOS Displacement Measurement

--- Recent Trend Line (Quadratic Regression)

AOI 6 (PPG 6) - Location Map



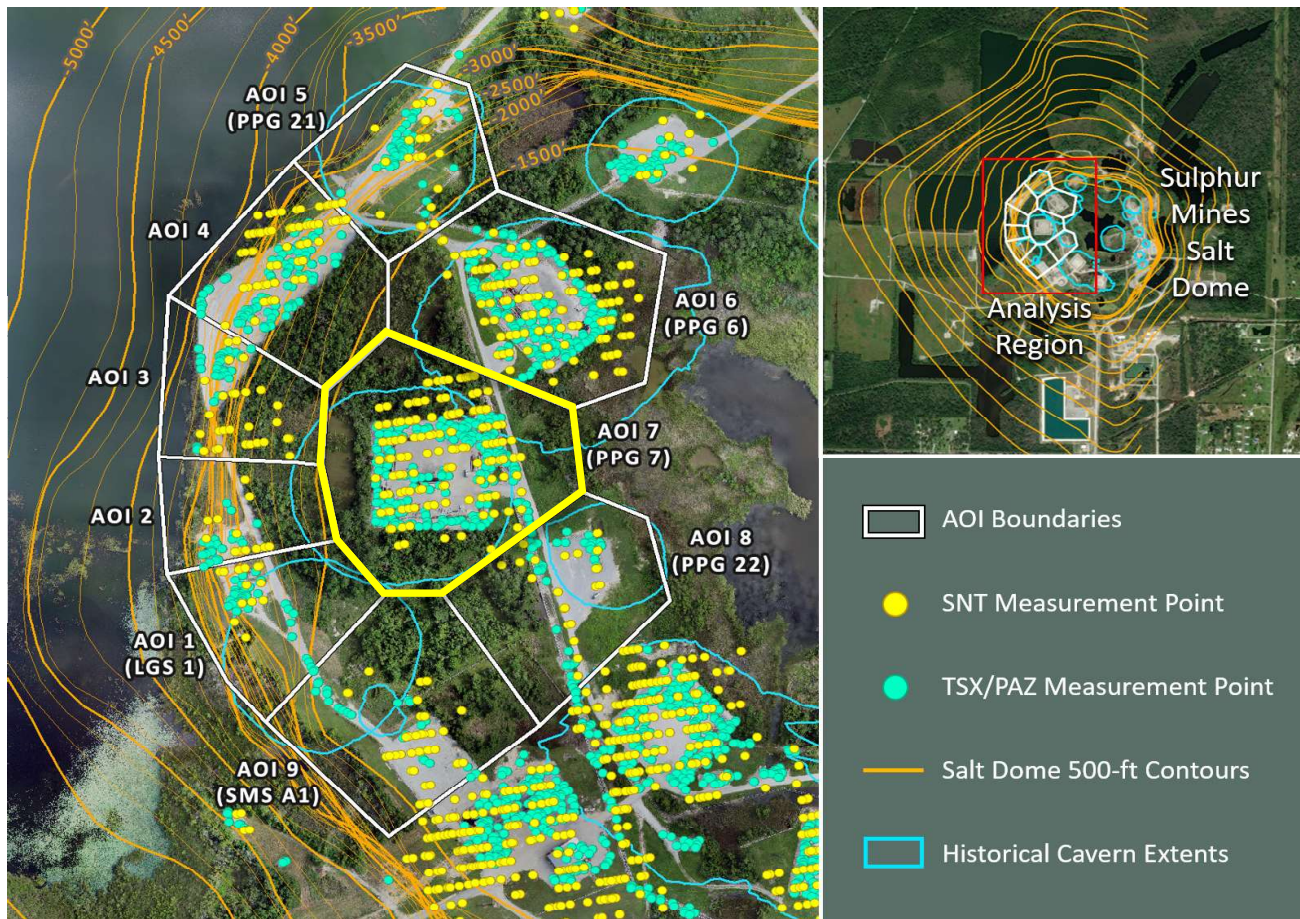
AOI 6 (PPG 6) - Displacement Time Series TSX/PAZ (10/26/2023) Point Count: 212



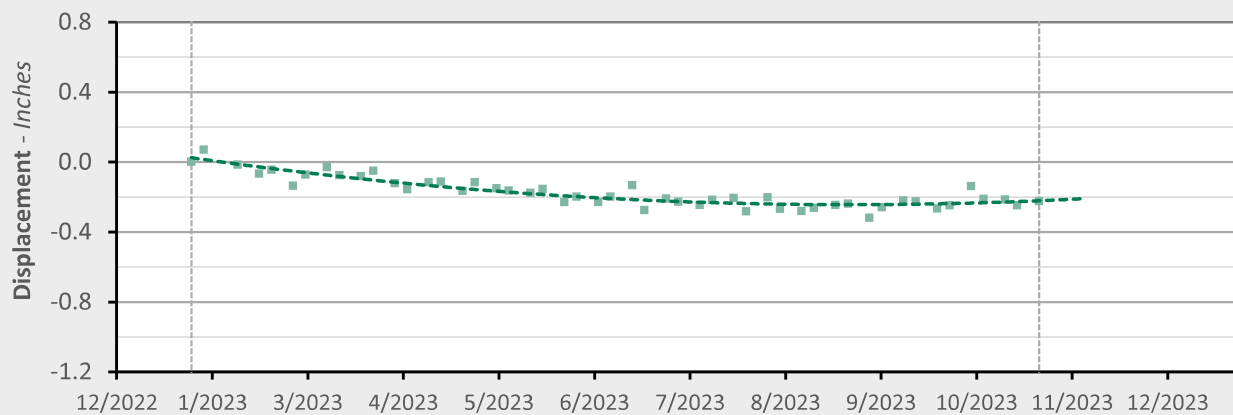
	As of 10/26/2023		Recent		Trend Change	
Velocity:	+0.00 in/yr	N/A	in/yr	N/A	in/yr	
Acceleration:	+1.31 in/yr ²	N/A	in/yr ²	N/A	in/yr ²	

■ Historical LOS Displacement Measurement
 --- Historical Trend Line (Quadratic Regression)
 ■ Recent LOS Displacement Measurement
 --- Recent Trend Line (Quadratic Regression)

AOI 7 (PPG 7) - Location Map



AOI 7 (PPG 7) - Displacement Time Series TSX/PAZ (10/26/2023) Point Count: 214



	As of 10/26/2023		Recent		Trend Change
Velocity:	+0.24 in/yr	N/A	in/yr	N/A	in/yr
Acceleration:	+1.57 in/yr ²	N/A	in/yr ²	N/A	in/yr ²

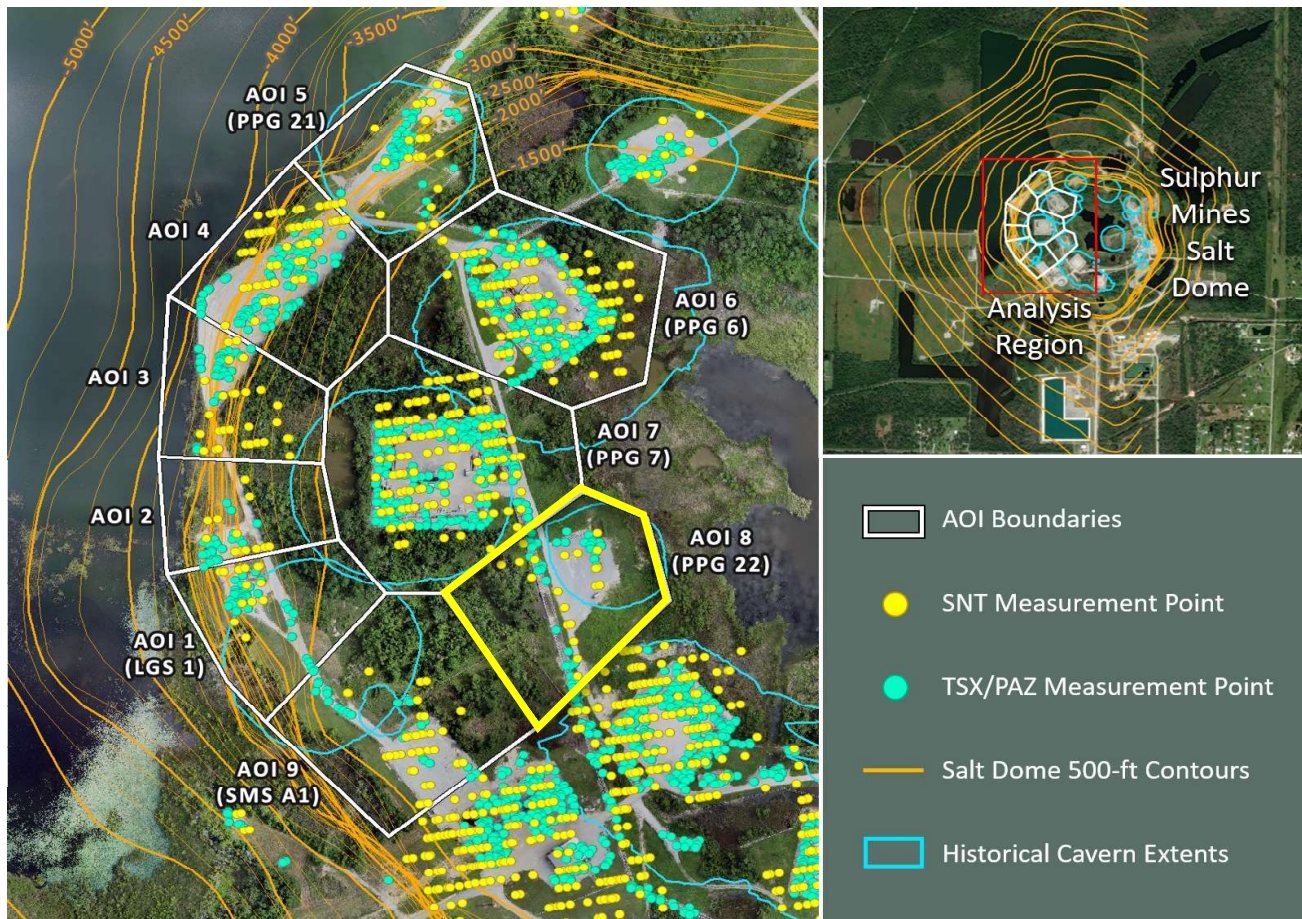
■ Historical LOS Displacement Measurement

--- Historical Trend Line (Quadratic Regression)

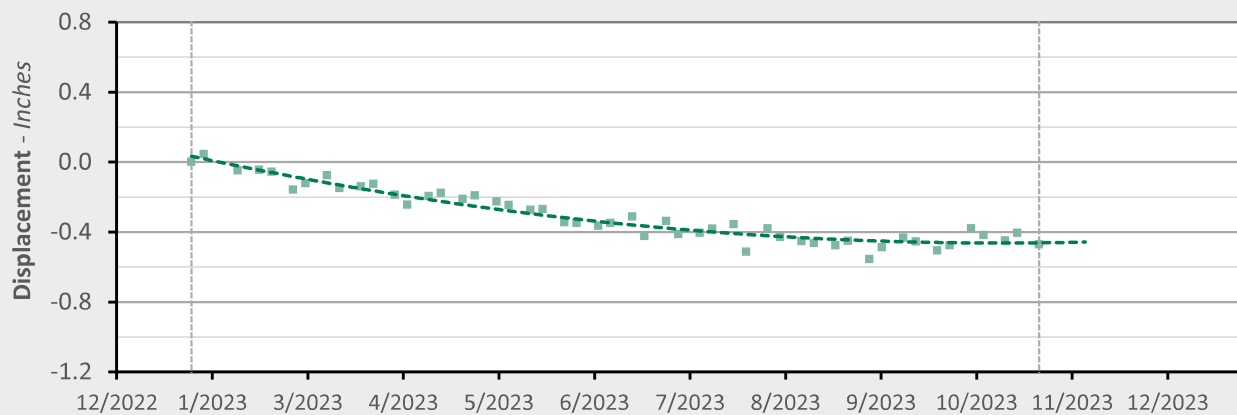
■ Recent LOS Displacement Measurement

--- Recent Trend Line (Quadratic Regression)

AOI 8 (PPG 22) - Location Map



AOI 8 (PPG 22) - Displacement Time Series TSX/PAZ (10/26/2023) Point Count: 40



	As of 10/26/2023	Recent	Trend Change
Velocity:	+0.03 in/yr	N/A	in/yr
Acceleration:	+1.91 in/yr ²	N/A	in/yr ²

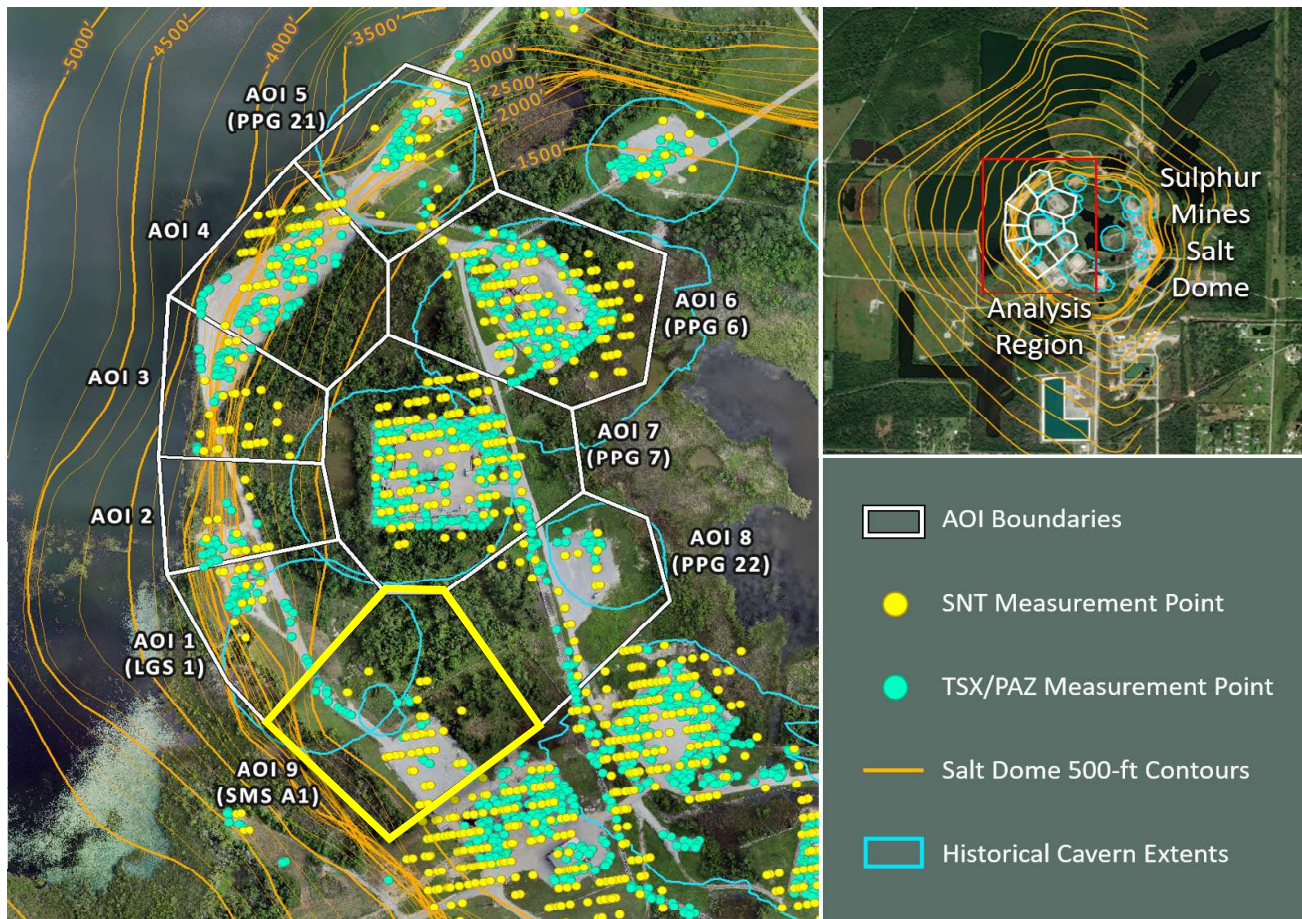
■ Historical LOS Displacement Measurement

--- Historical Trend Line (Quadratic Regression)

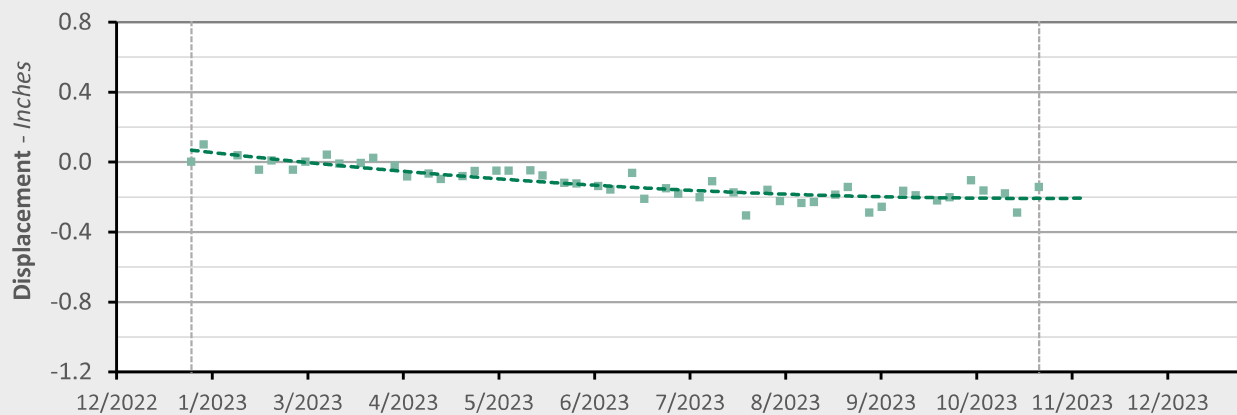
■ Recent LOS Displacement Measurement

--- Recent Trend Line (Quadratic Regression)

AOI 9 (PPG A1) - Location Map



AOI 9 (SMS A1) - Displacement Time Series TSX/PAZ (10/26/2023) Point Count: 26



	As of 10/26/2023		Recent		Trend Change
Velocity:	-0.02 in/yr	N/A	in/yr	N/A	in/yr
Acceleration:	+0.98 in/yr ²	N/A	in/yr ²	N/A	in/yr ²

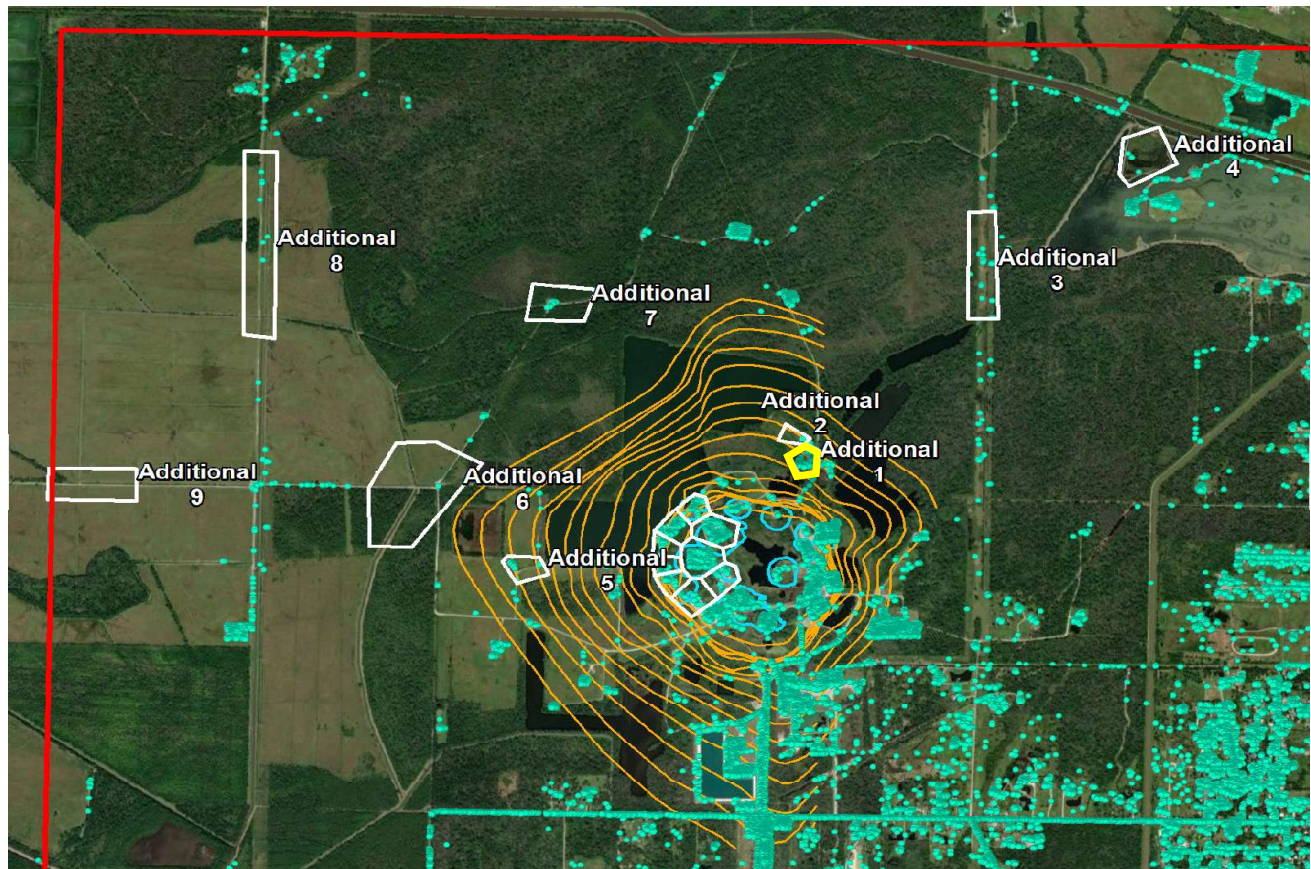
■ Historical LOS Displacement Measurement

--- Historical Trend Line (Quadratic Regression)

■ Recent LOS Displacement Measurement

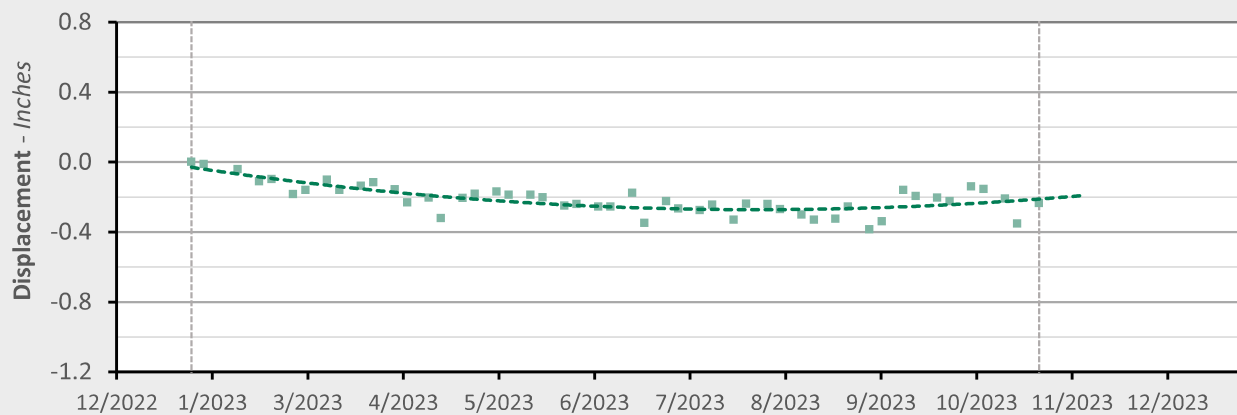
--- Recent Trend Line (Quadratic Regression)

Additional 1 - Location Map



Additional 1 - Displacement Time Series

TSX/PAZ (10/26/2023) Point Count: 63



	As of 10/26/2023		Recent		Trend Change
Velocity:	+0.45 in/yr	N/A	in/yr	N/A	in/yr
Acceleration:	+1.92 in/yr ²	N/A	in/yr ²	N/A	in/yr ²

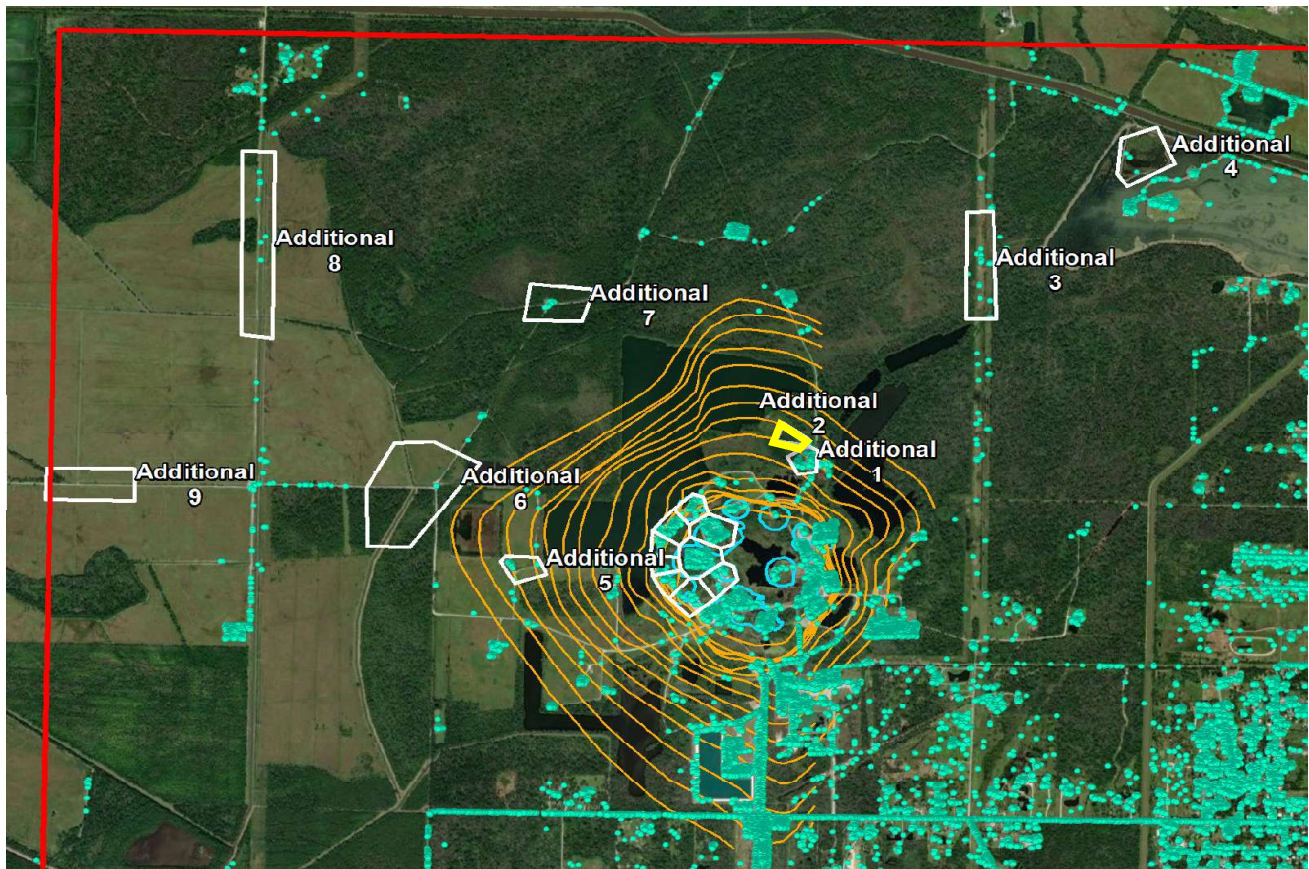
■ Historical LOS Displacement Measurement

--- Historical Trend Line (Quadratic Regression)

■ Recent LOS Displacement Measurement

--- Recent Trend Line (Quadratic Regression)

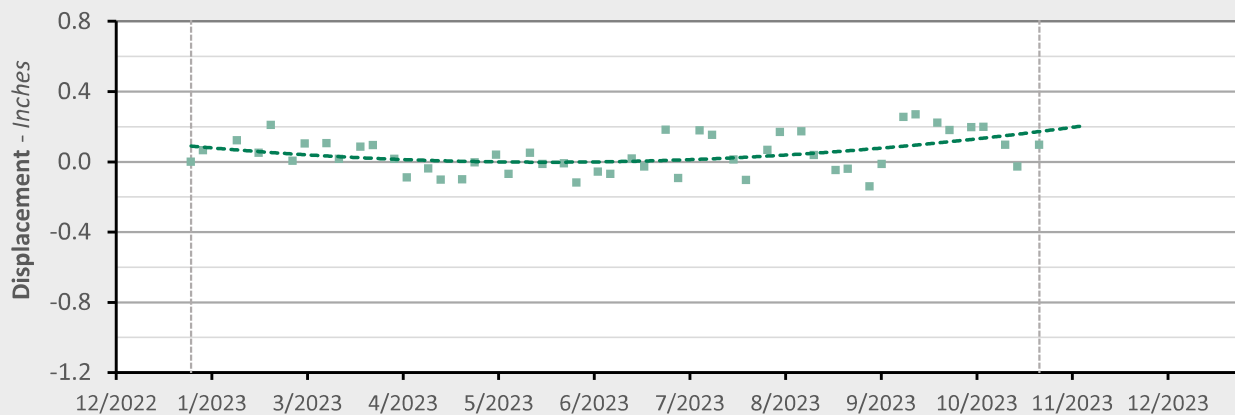
Additional 2 - Location Map



Additional 2 - Displacement Time Series

TSX/PAZ (10/26/2023) Point Count:

2



	As of 10/26/2023		Recent		Trend Change
Velocity:	+0.76 in/yr	N/A	in/yr	N/A	in/yr
Acceleration:	+1.83 in/yr ²	N/A	in/yr ²	N/A	in/yr ²

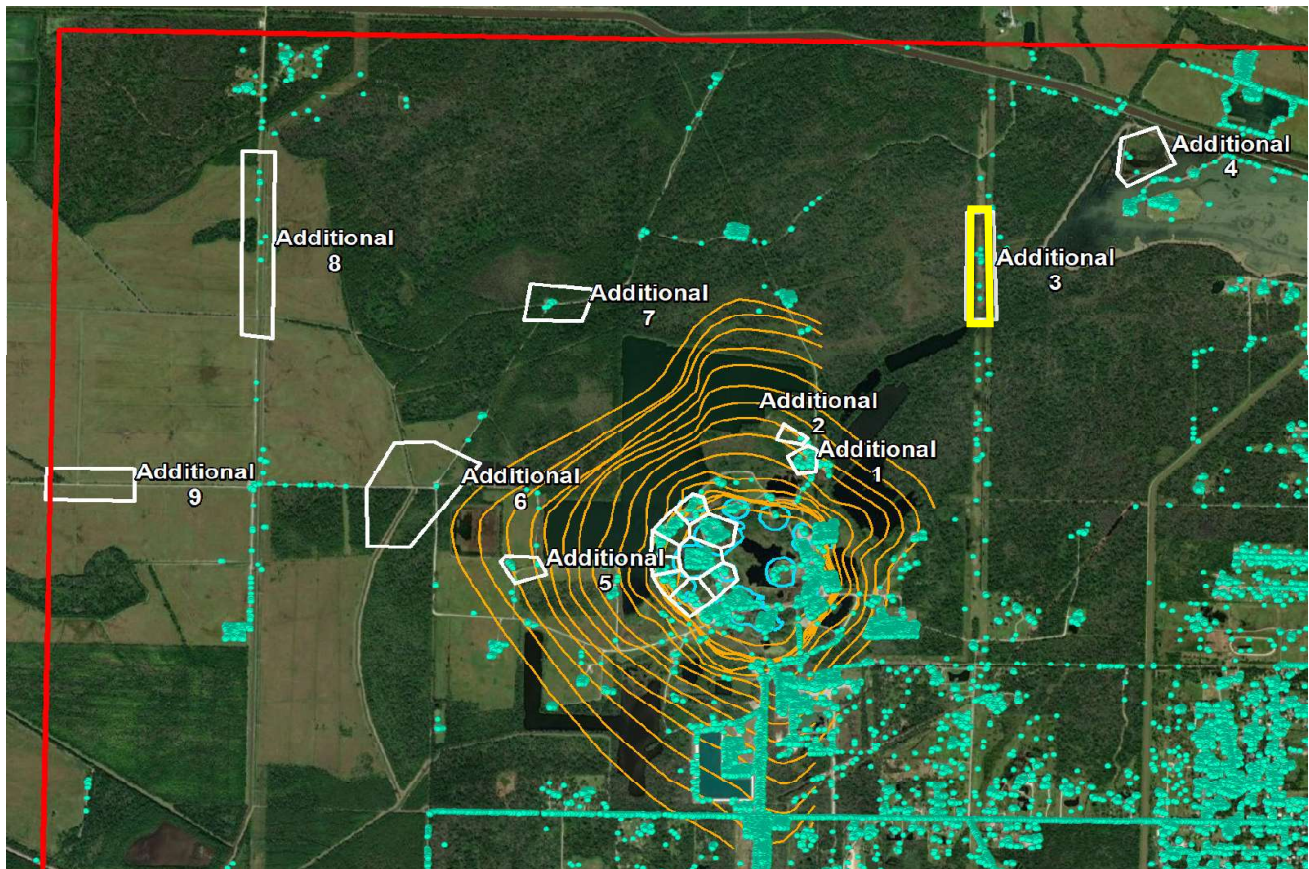
■ Historical LOS Displacement Measurement

--- Historical Trend Line (Quadratic Regression)

■ Recent LOS Displacement Measurement

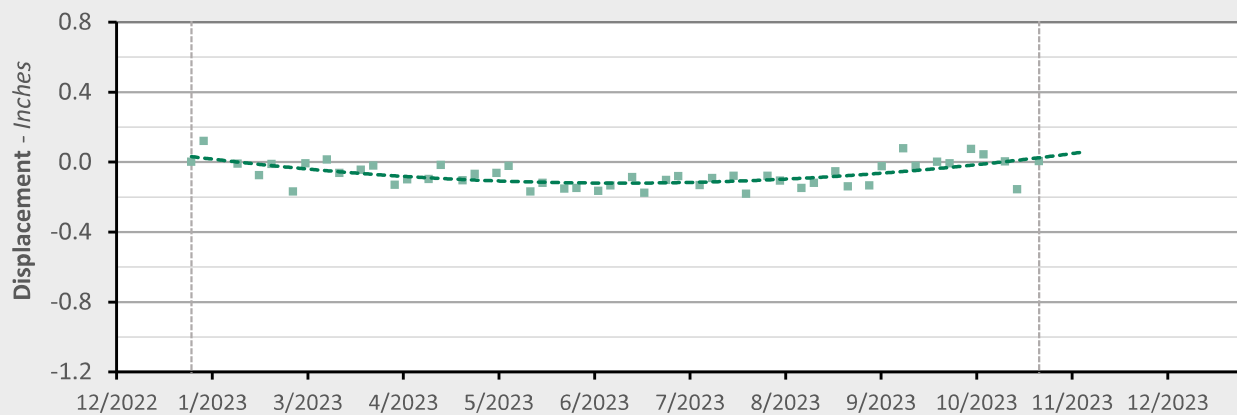
--- Recent Trend Line (Quadratic Regression)

Additional 3 - Location Map



Additional 3 - Displacement Time Series

TSX/PAZ (10/26/2023) Point Count: 26



	As of 10/26/2023		Recent		Trend Change
Velocity:	+0.74 in/yr	N/A	in/yr	N/A	in/yr
Acceleration:	+2.09 in/yr ²	N/A	in/yr ²	N/A	in/yr ²

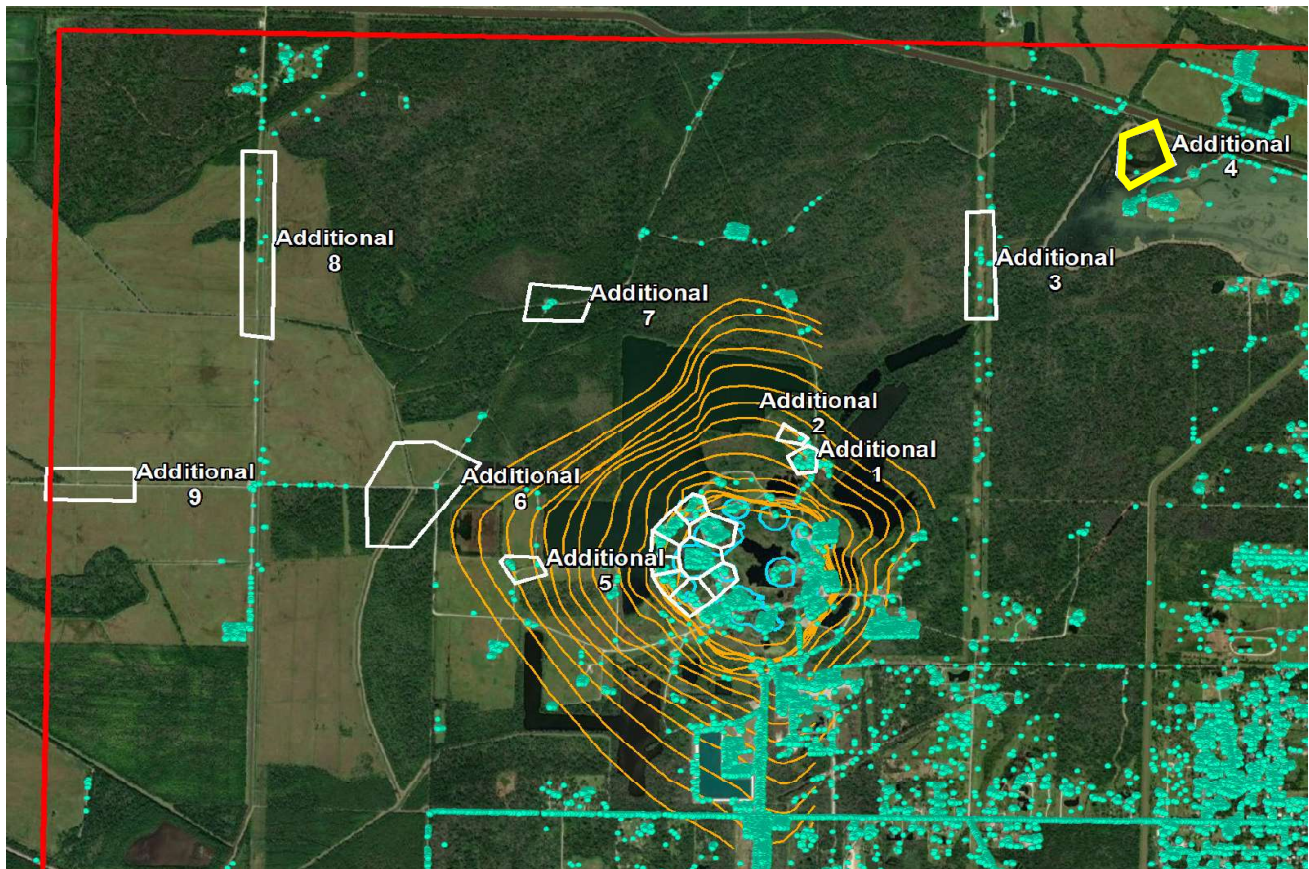
■ Historical LOS Displacement Measurement

--- Historical Trend Line (Quadratic Regression)

■ Recent LOS Displacement Measurement

--- Recent Trend Line (Quadratic Regression)

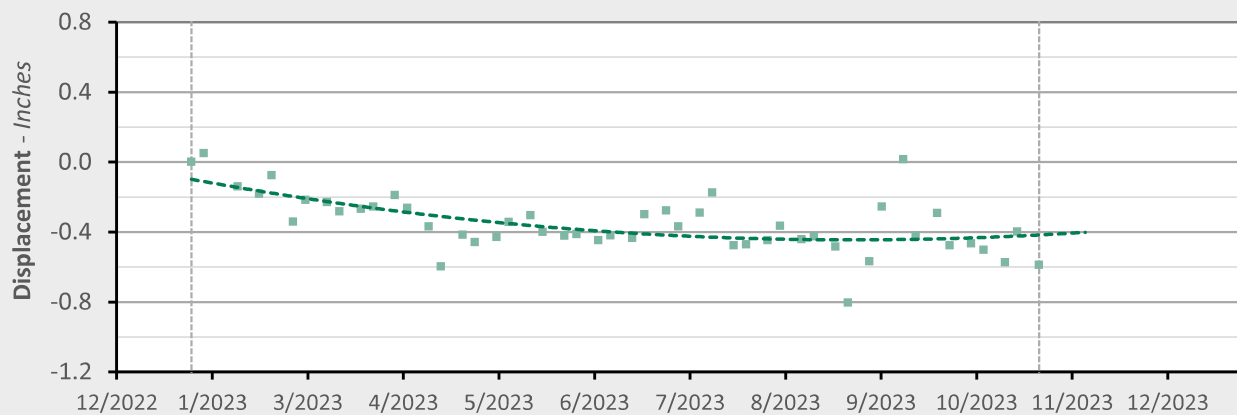
Additional 4 - Location Map



Additional 4 - Displacement Time Series

TSX/PAZ (10/26/2023) Point Count:

3



	As of 10/26/2023		Recent		Trend Change
Velocity:	+0.30 in/yr	N/A	in/yr	N/A	in/yr
Acceleration:	+2.02 in/yr ²	N/A	in/yr ²	N/A	in/yr ²

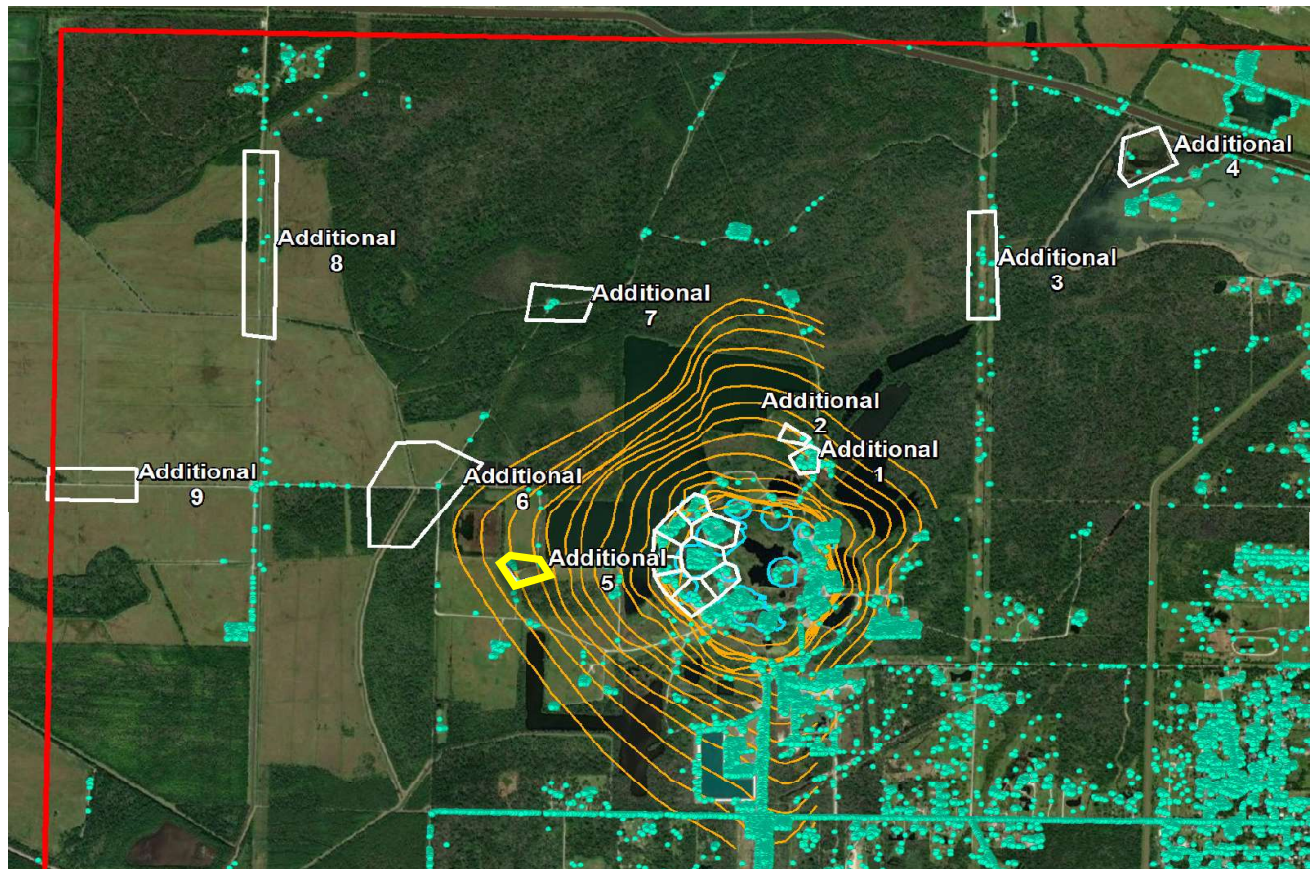
■ Historical LOS Displacement Measurement

--- Historical Trend Line (Quadratic Regression)

■ Recent LOS Displacement Measurement

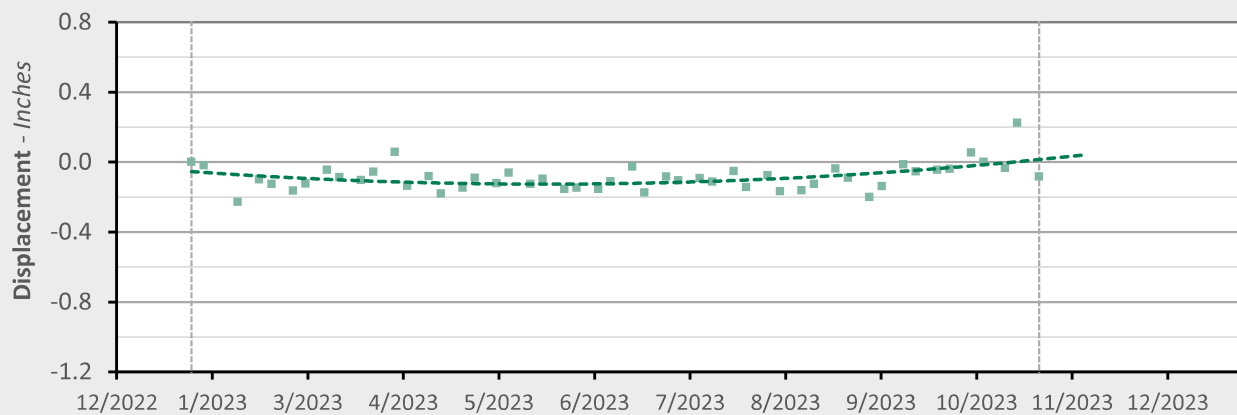
--- Recent Trend Line (Quadratic Regression)

Additional 5 - Location Map



Additional 5 - Displacement Time Series

TSX/PAZ (10/26/2023) Point Count: 14



	As of 10/26/2023		Recent		Trend Change
Velocity:	+0.61 in/yr	N/A	in/yr	N/A	in/yr
Acceleration:	+1.45 in/yr ²	N/A	in/yr ²	N/A	in/yr ²

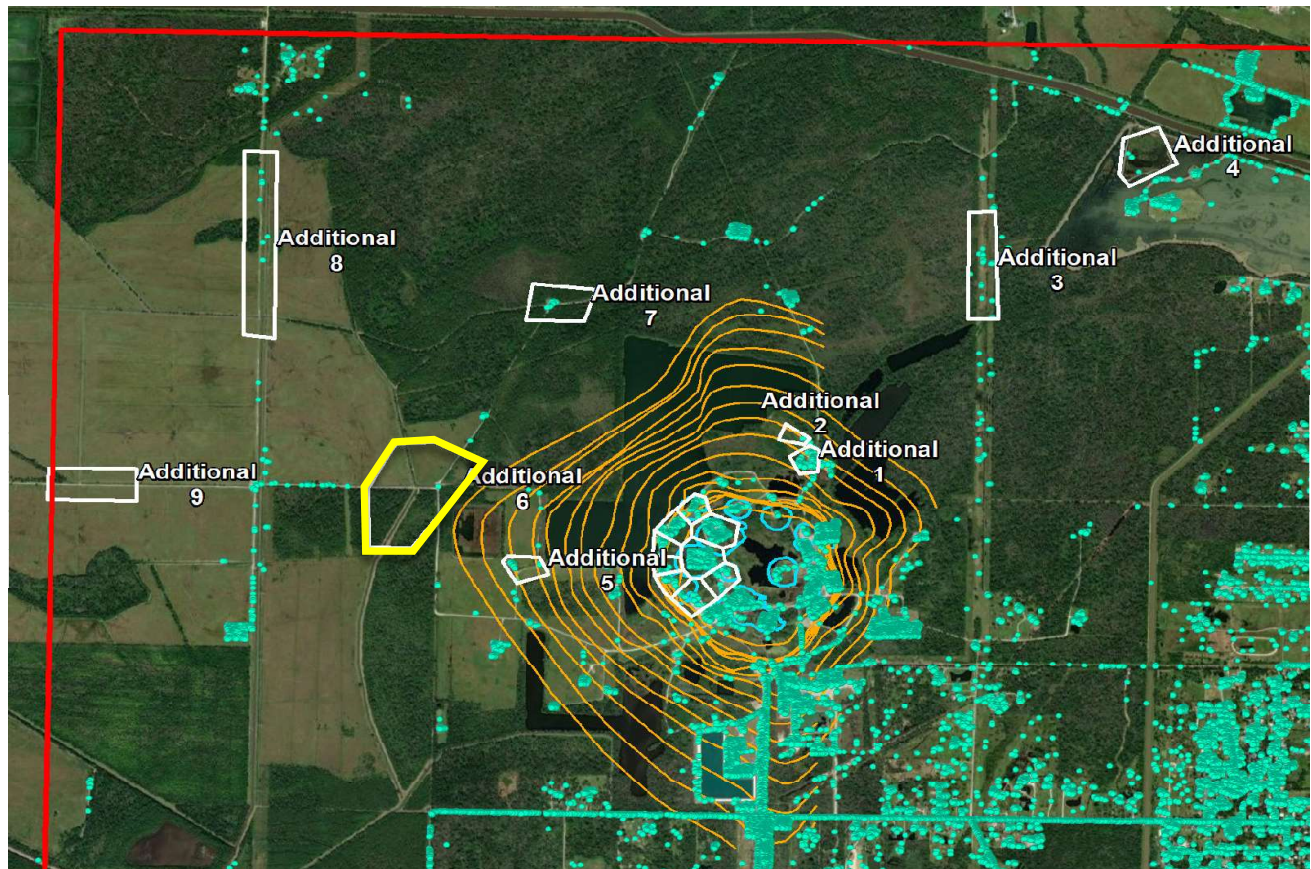
■ Historical LOS Displacement Measurement

--- Historical Trend Line (Quadratic Regression)

■ Recent LOS Displacement Measurement

--- Recent Trend Line (Quadratic Regression)

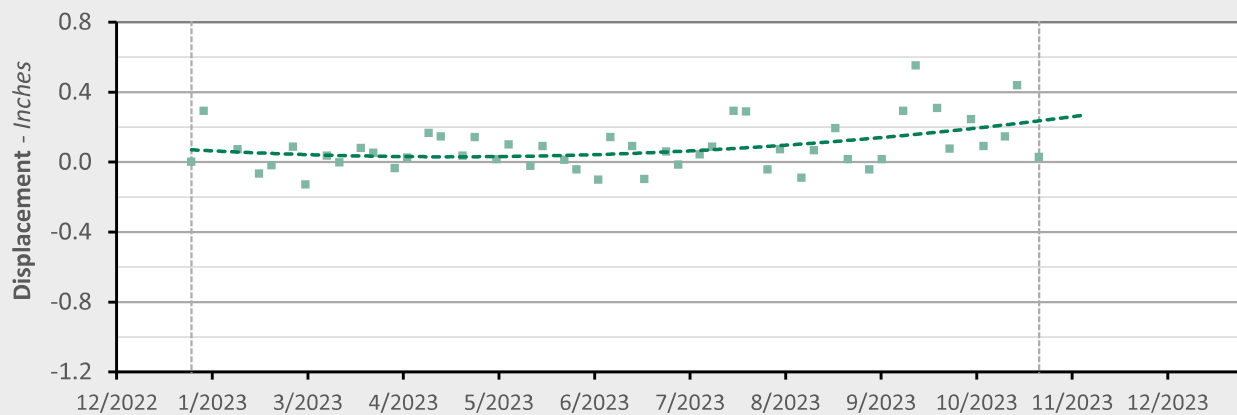
Additional 6 - Location Map



Additional 6 - Displacement Time Series

TSX/PAZ (10/26/2023) Point Count:

1



	As of 10/26/2023		Recent		Trend Change
Velocity:	+0.76 in/yr	N/A	in/yr	N/A	in/yr
Acceleration:	+1.51 in/yr ²	N/A	in/yr ²	N/A	in/yr ²

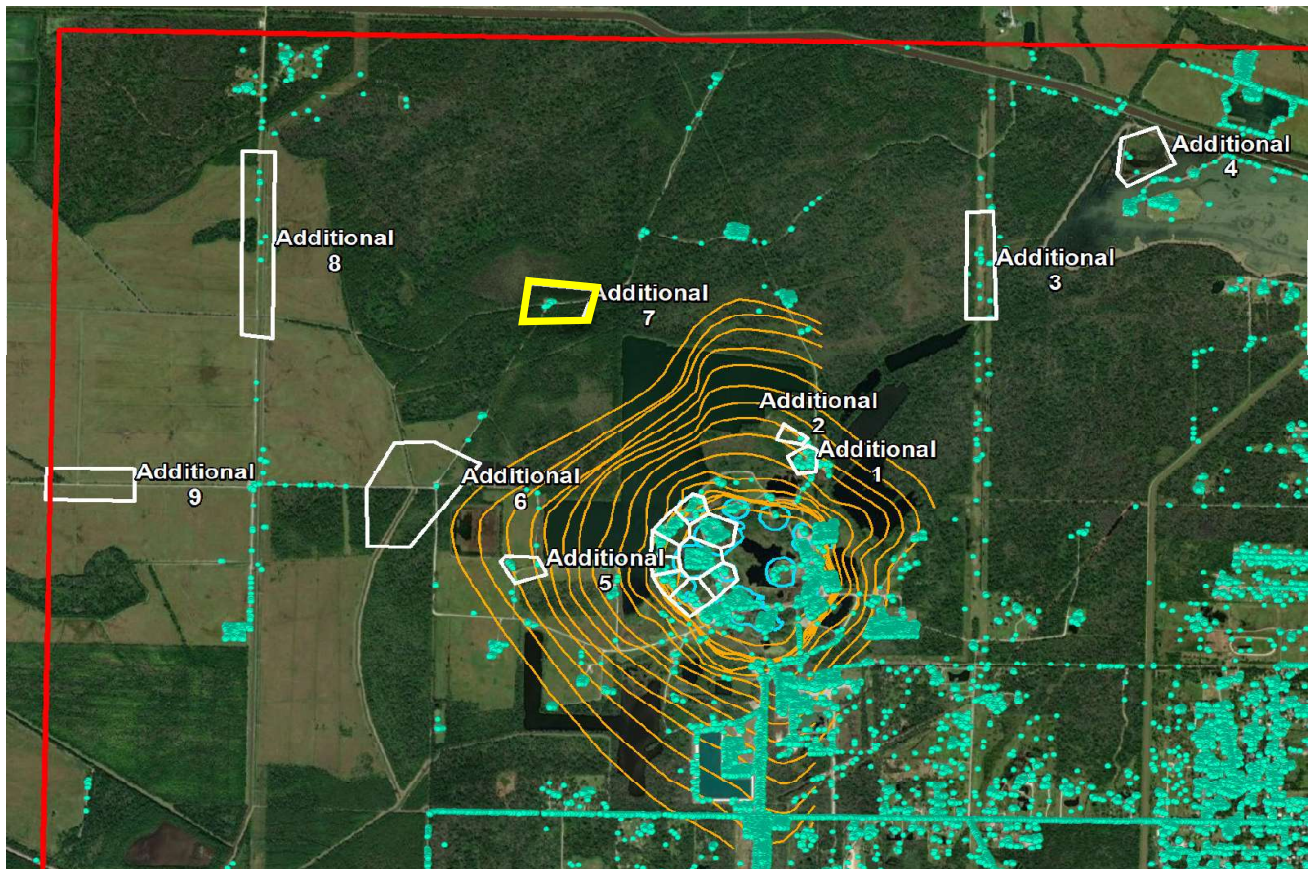
■ Historical LOS Displacement Measurement

--- Historical Trend Line (Quadratic Regression)

■ Recent LOS Displacement Measurement

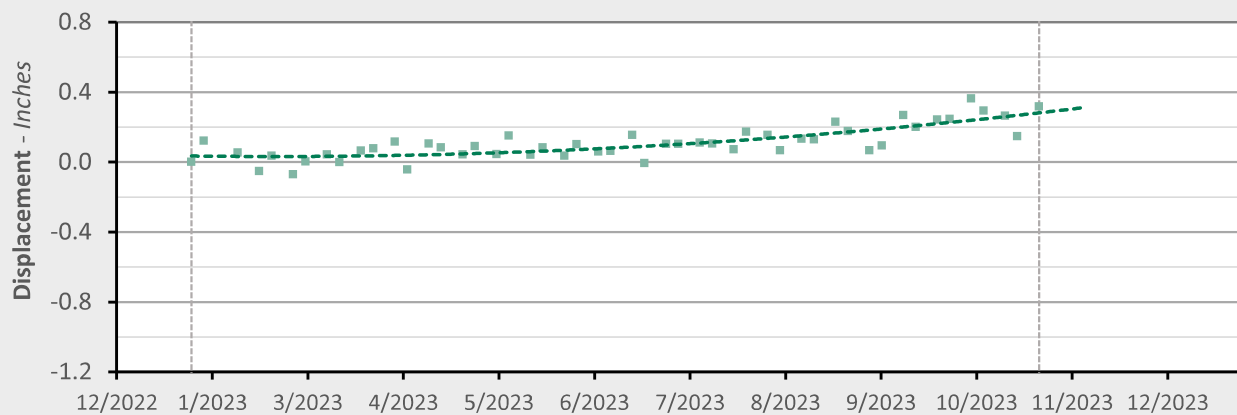
--- Recent Trend Line (Quadratic Regression)

Additional 7 - Location Map



Additional 7 - Displacement Time Series

TSX/PAZ (10/26/2023) Point Count: 10



	As of 10/26/2023		Recent		Trend Change
Velocity:	+0.71 in/yr	N/A	in/yr	N/A	in/yr
Acceleration:	+1.08 in/yr ²	N/A	in/yr ²	N/A	in/yr ²

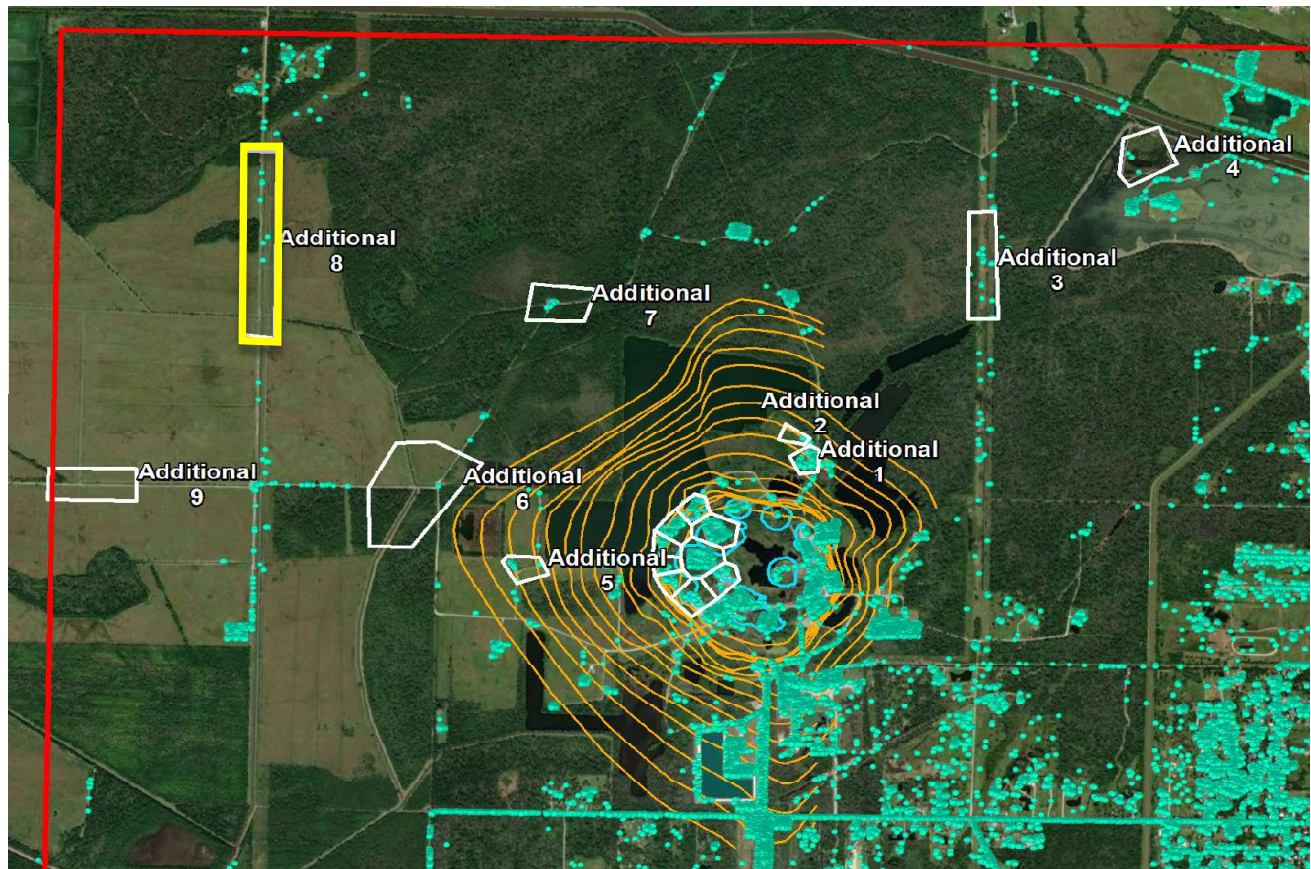
■ Historical LOS Displacement Measurement

--- Historical Trend Line (Quadratic Regression)

■ Recent LOS Displacement Measurement

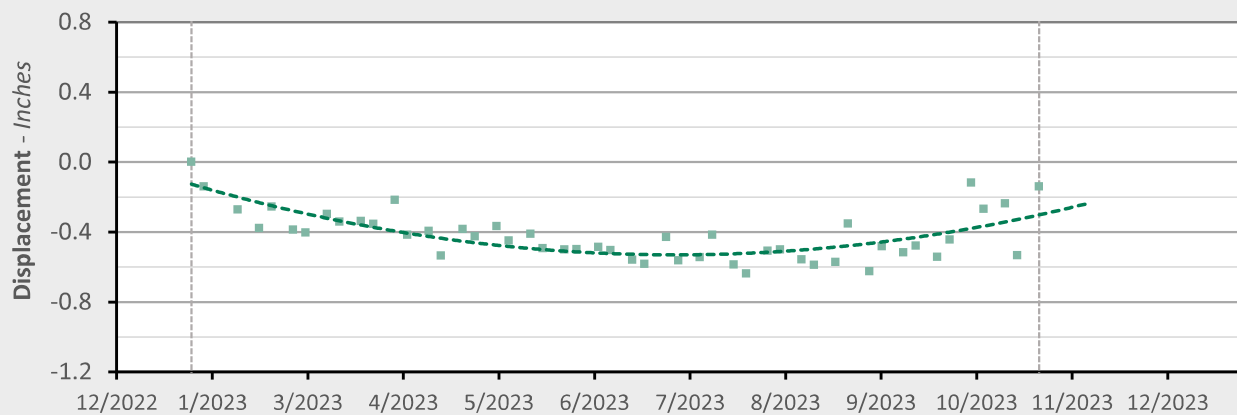
--- Recent Trend Line (Quadratic Regression)

Additional 8 - Location Map



Additional 8 - Displacement Time Series

TSX/PAZ (10/26/2023) Point Count: 7



	As of 10/26/2023		Recent		Trend Change
Velocity:	+1.33 in/yr	N/A	in/yr	N/A	in/yr
Acceleration:	+4.37 in/yr ²	N/A	in/yr ²	N/A	in/yr ²

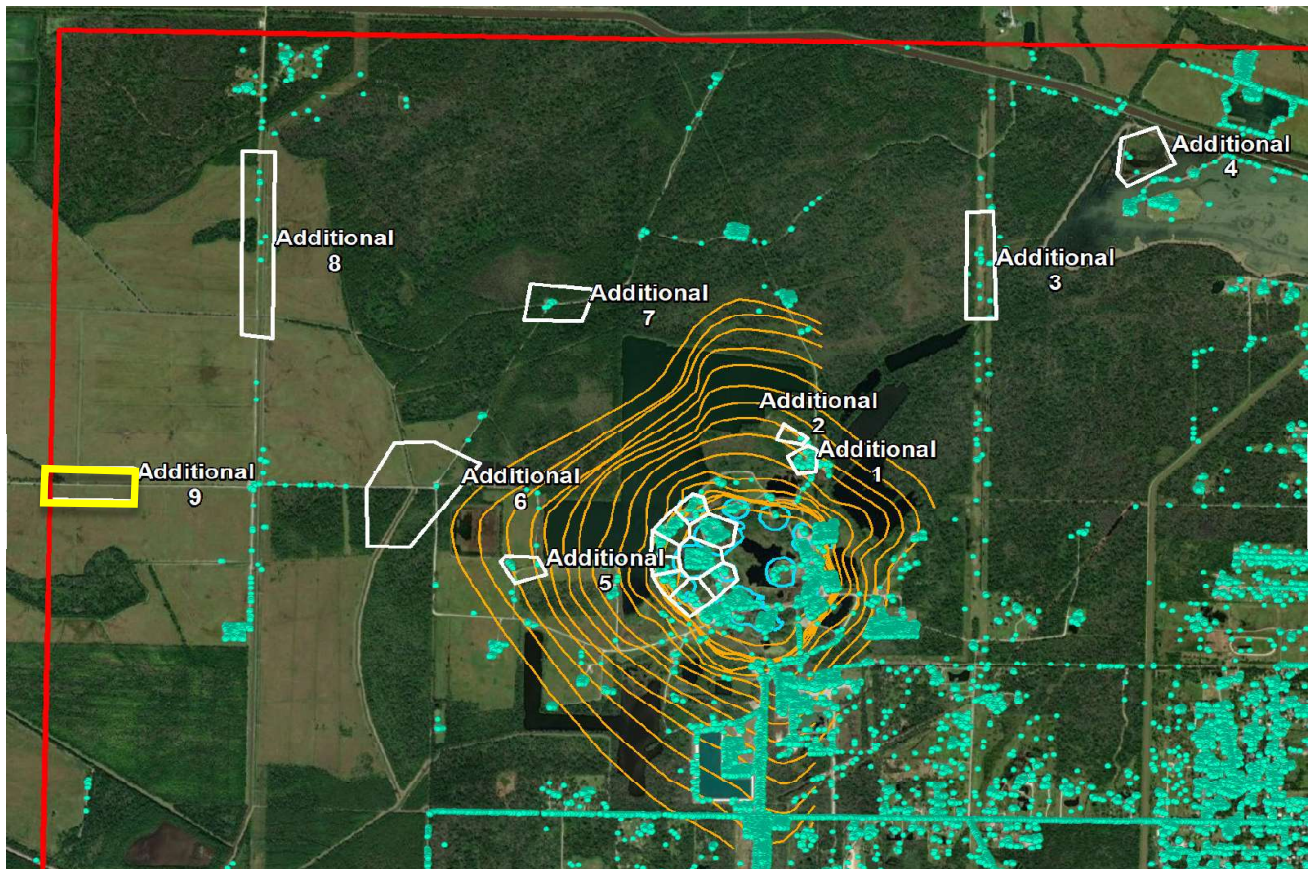
■ Historical LOS Displacement Measurement

--- Historical Trend Line (Quadratic Regression)

■ Recent LOS Displacement Measurement

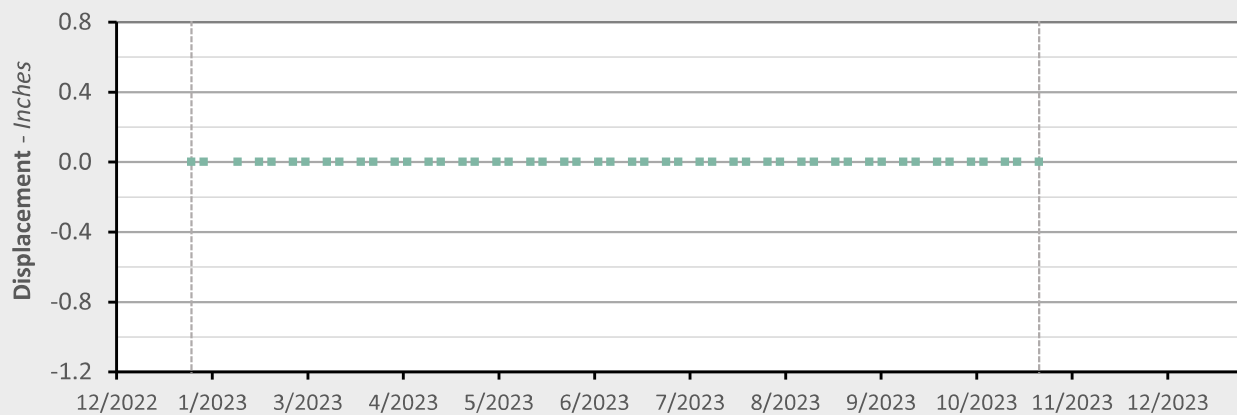
--- Recent Trend Line (Quadratic Regression)

Additional 9 - Location Map



Additional 9 - Displacement Time Series

TSX/PAZ (10/26/2023) Point Count: 0



	As of 10/26/2023			Recent		Trend Change
Velocity:	#VALUE!	in/yr	N/A	in/yr	N/A	in/yr
Acceleration:	#VALUE!	in/yr ²	N/A	in/yr ²	N/A	in/yr ²

■ Historical LOS Displacement Measurement

--- Historical Trend Line (Quadratic Regression)

■ Recent LOS Displacement Measurement

--- Recent Trend Line (Quadratic Regression)