

Westlake US 2
Received 12/6/2023

TSX/PAZ Satellite Update
InSAR Subsidence
December 2, 2023

Lonquist comment:

The PAZ satellite from the TSX/PAZ constellation (4 & 7-day revisit) passed by Sulphur on Saturday December 2. We received the dataset Monday and verified that none of the point groups within the review area are showing deviation from their respective trends. The attached report has been prepared for reference.

Submitted by: Nathaniel Byars (Lonquist)



TSX/PAZ Satellite Update

Continuous InSAR Monitoring of
Ground Displacement
Near Western Caverns and Dome Flank

Sulphur Mines Salt Dome

Prepared for:
Westlake Chemical

Prepared by:
Lonquist & Co., LLC
8591 United Plaza Blvd.
Suite 280
Baton Rouge, LA 70809

Dataset
Satellite Source
TerraSAR-X - PAZ Constellation
Most Recent Image Date
Saturday, December 2, 2023

Analysis Report Date:
December 6, 2023

Dataset Information

Satellite Source	TerraSAR-X - PAZ Constellation
Revisit Frequency	4 and 7 days
Most Recent Image Date	Saturday, December 2, 2023
Dataset Image Count	57
Dataset Time Range	January 24, 2023 - December 2, 2023
Dataset Length	0.85 Years
Satellite Line-of-Sight (LOS)	37° East of Vertical (Viewing site from the East)

Analysis Methodology

Time Series Charts

Trend lines were calculated for the averaged displacement values within each AOI. Both a nonlinear (quadratic) and linear regression were applied to each AOI point group to identify rates of change in LOS displacement. These trends are displayed in the Time Series section of this report.

Contour Maps

A nonlinear (quadratic) and linear trend was also calculated for each individual measurement point across the analysis region. Nonlinear trend values for each point were used to generate Velocity and Acceleration contour maps to convey the spatial distribution of the calculated movement. The linear trend values for each point (which lack an acceleration component) were used to generate an additional Velocity contour map. Negative velocity values indicate subsidence or westward movement and positive velocity indicates uplift or eastward movement. Negative acceleration values indicate increasing rates of subsidence, increasing westward movement, or slowing eastward movement and positive acceleration values indicate slowing rates of subsidence, slowing westward movement, or increasing eastward movement.

Observations

To-date there has been no material deviation from established subsidence trends in the areas investigated.

The timeframe of the dataset does not allow for comparison of recent to long-term LOS displacement rates. This dataset is primarily used to monitor for acute trend deviations and benefits from a higher measurement precision in individual readings than the SNT data.

The current timeframe appears to indicate a positive acceleration of varying magnitudes across all of the AOI point groups evaluated. Current nonlinear velocities are also calculated as positive in the majority of the point groups. Based on a separate review of 2D vertical and horizontal displacement data, this is caused by varying combinations of slowing vertical subsidence (likely seasonal in nature) and consistent eastward horizontal movement in the majority of the western AOIs



Date Signed: December 6, 2023
Austin, Texas

Nathaniel L. Byars, P.E.
Principal Engineer
Louisiana License No. 40697

InSAR Data Sources

InSAR Data

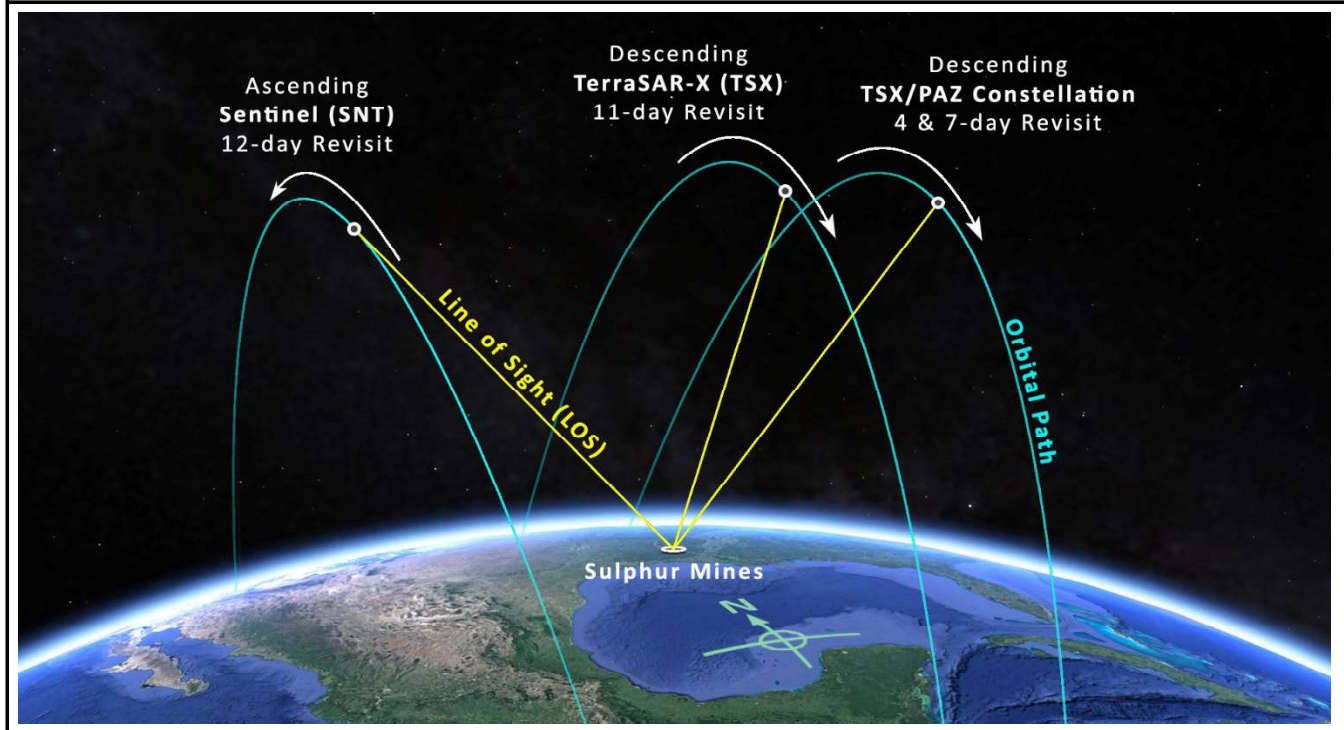
Interferometric Synthetic Aperture Radar (InSAR) is the most well established method to continually evaluate small, normally undetectable, ground movement over a large area. Radar imagery collected via satellites over successive orbital passes is used to identify and define measurement points on the ground. Objects or ground features providing a stable reflection of radar energy such as buildings, roads, and infrastructure produce the highest quality measurement points. InSAR analysis identifies the change in distance between the satellite and each measurement point over time relative to a stable reference point within the imaged area.

Satellite Sources

Two InSAR datasets are being used to evaluate subsidence over the Sulphur Mines Salt Dome. These datasets provide Line-of-Sight (LOS) displacement measurements from both ascending and descending orbits. An ascending orbit denotes the satellite's longitudinal course from south to north as it passes over the site, while a descending orbit denotes the satellite is moving from north to south.

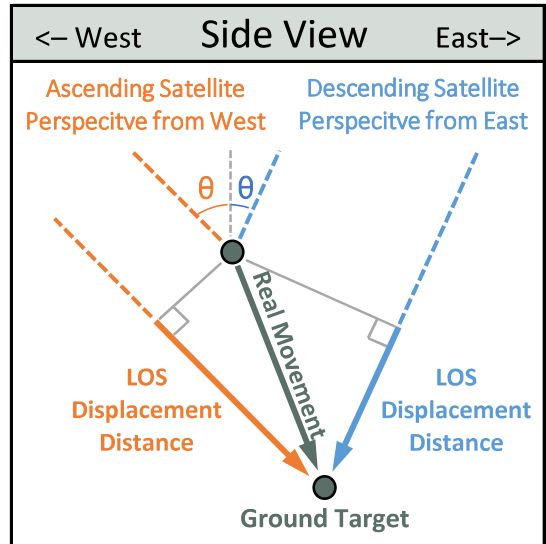
The first dataset comes from a low-resolution Sentinel-1 (SNT) satellite on an ascending orbit that captures data from the west of the site on a 12-day frequency. The second comes from a pair of high resolution satellites that share the same descending orbit and capture data from east of the site. These are a TSX satellite and the PAZ satellite (TSX/PAZ constellation), both with an 11-day revisit frequency. Their orbits are offset with the PAZ satellite passing over the site 4 days after the TSX satellite. Prior to May 2023, data was captured from a different high-resolution TerraSAR-X (TSX) satellite on a descending orbit that captured data from the east of the site on an 11-day frequency. The transition was made for the increased data frequency that resulted from a 4 and 7-day revisit period. The image below depicts the orbital paths of the satellites in relation to the Sulphur Mines Salt Dome.

Satellite Orbital Diagram

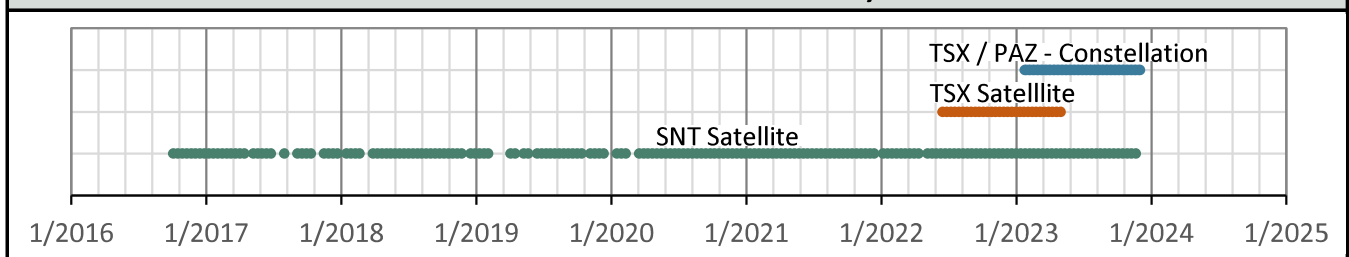
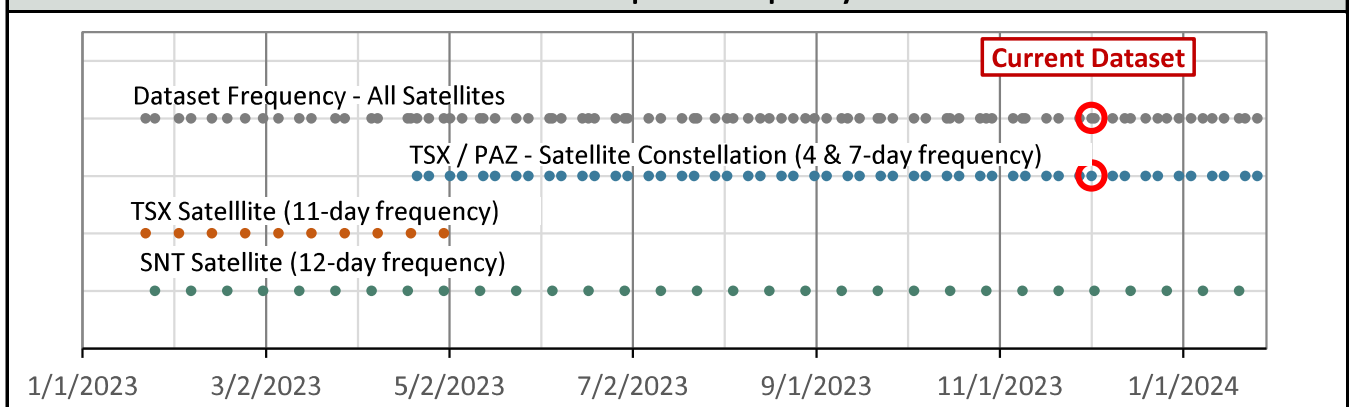


InSAR Line-of-Site (LOS) Data

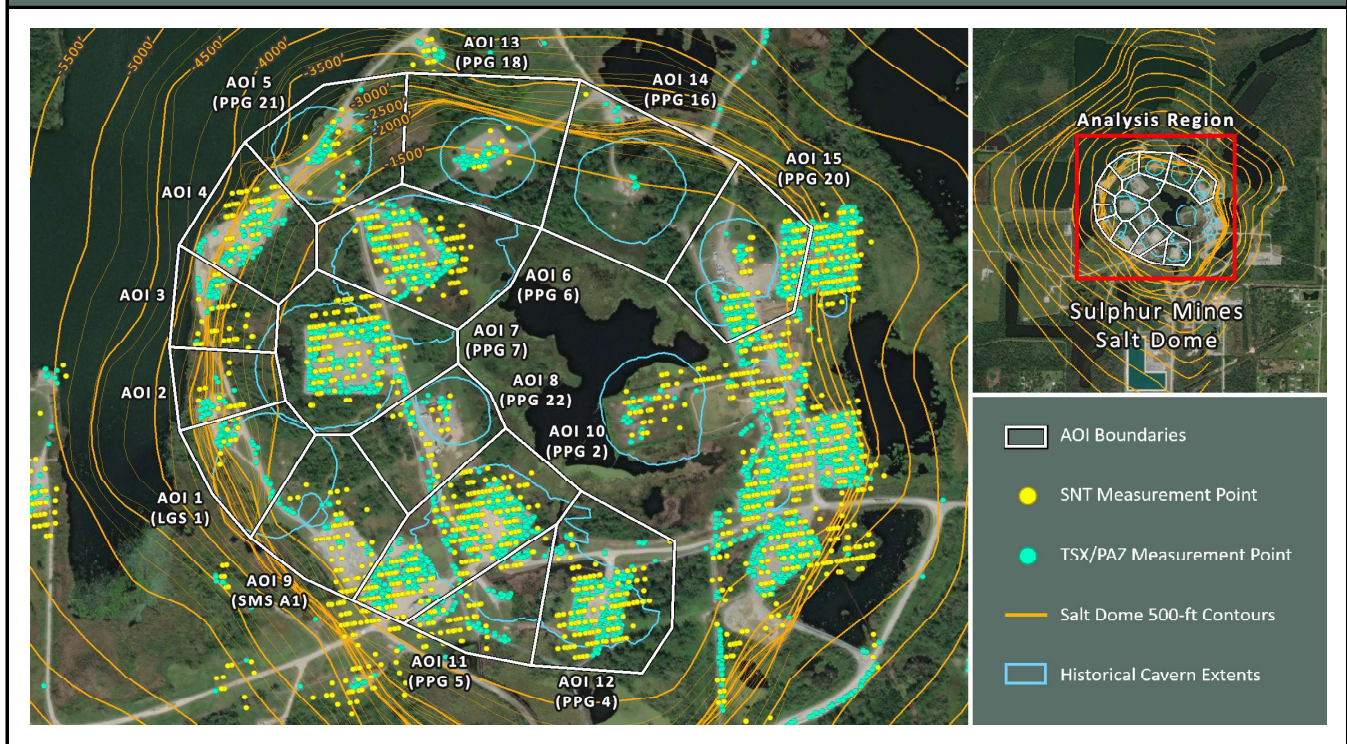
LOS displacement measurements refer to a change in distance between the satellite sensor and the ground target. Measurement positions on the west side of the Sulphur Dome are known to be experiencing some eastward movement toward the dome center due to the geometry of the subsidence basin. The InSAR satellites view the site from eastward and westward positions so LOS measurements are understood to convey a movement distance that is not purely vertical. The diagram to the right illustrates the geometric relationship between the theoretical Real movement of a ground target and LOS displacement measurements from two different satellite viewing directions.

**Satellite Properties & Image Frequency**

Satellite and Data Properties	SNT	TSX	TSX/PAZ Constellation
Band (Wavelength)	C-band (2.20 in)	X-band (1.22 in)	X-band (1.22 in)
Track	T136	T29	T67 & T120
Pixel resolution	65 x 16 ft	3 x 3 ft	3 x 3 ft
Revisit frequency	12 days	11 days	4 & 7 days
Orbit (LOS Angle, θ)	Ascending (43°)	Descending (17°)	Descending (37°)
Data Start Date	10/4/2016	6/16/2022	1/24/2023
Measurement error range	± 0.20 in	± 0.03 in	± 0.03 in

Dataset Measurement History**Dataset Update Frequency**

AOI Boundaries & InSAR Measurement Points



Subsidence Monitoring Areas of Interest (AOIs)

To visually convey and evaluate trend consistency for the displacement time series of each ground target, measurement points were grouped and their displacement values were averaged. The point groups are referred to as Areas of Interest (AOIs) in this analysis and their boundaries are depicted on the above map. The below table lists the trend values calculated in each AOI for the dataset evaluated in this report.

AOI Name	TSX/PAZ (12/2/2023)	LOS Velocity (in/yr)		LOS Acceleration (in/yr ²)	
		Point Count	Nonlinear	Linear	Nonlinear
AOI 1 (LGS 1)	42		+0.74	+0.05	+1.61
AOI 2	24		+0.83	+0.06	+1.83
AOI 3	39		+0.79	+0.19	+1.44
AOI 4	103		+1.03	+0.17	+2.03
AOI 5 (PPG 21)	47		+0.51	-0.10	+1.43
AOI 6 (PPG 6)	212		+0.32	-0.35	+1.61
AOI 7 (PPG 7)	216		+0.58	-0.20	+1.85
AOI 8 (PPG 22)	36		+0.20	-0.57	+1.82
AOI 9 (SMS A1)	23		+0.14	-0.37	+1.21
AOI 10 (PPG 2)	403		-0.10	-0.51	+0.97
AOI 11 (PPG 5)	84		+0.14	-0.46	+1.43
AOI 12 (PPG 4)	264		-0.30	-0.81	+1.19
AOI 13 (PPG 18)	52		+0.61	-0.37	+2.35
AOI 14 (PPG 16)	11		+0.59	-0.77	+3.22
AOI 15 (PPG 20)	224		-0.59	-0.96	+0.90

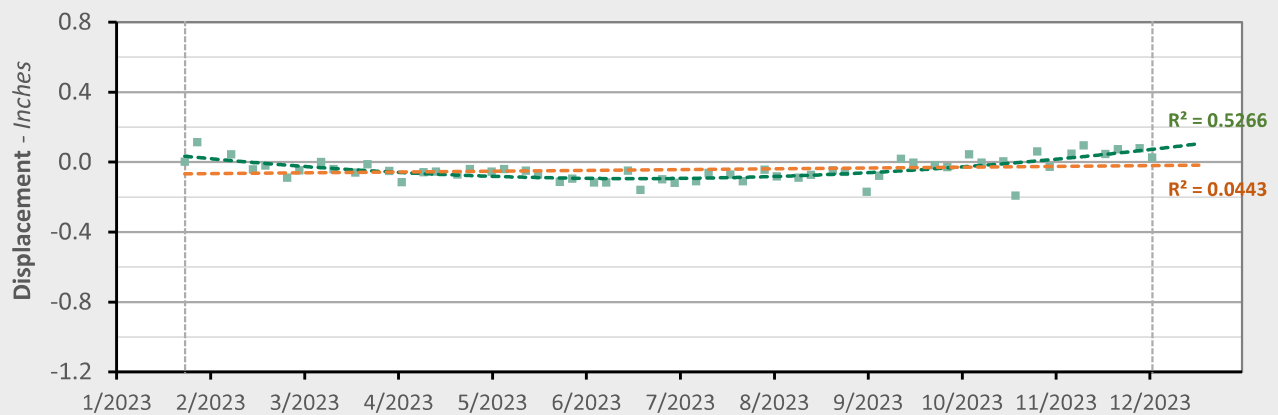
AOI 1 (LGS 1) - Location Map



AOI 1 (LGS 1) - Displacement Time Series

TSX/PAZ (12/2/2023) Point Count:

42

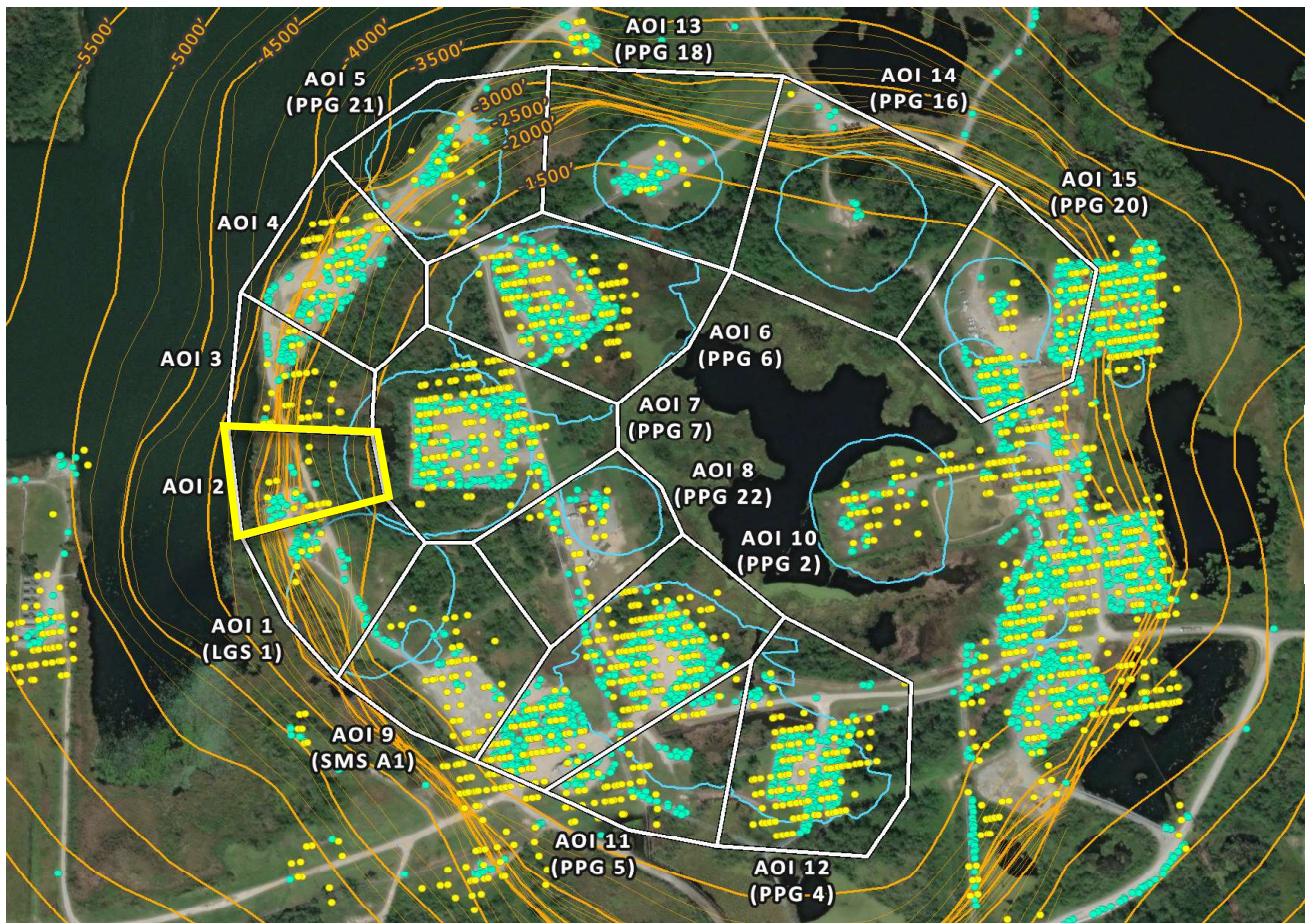


	Nonlinear Trend	Linear Trend
Velocity:	+0.74 in/yr	+0.05 in/yr
Acceleration:	+1.61 in/yr ²	0.00 in/yr ²

■ LOS Displacement Measurement

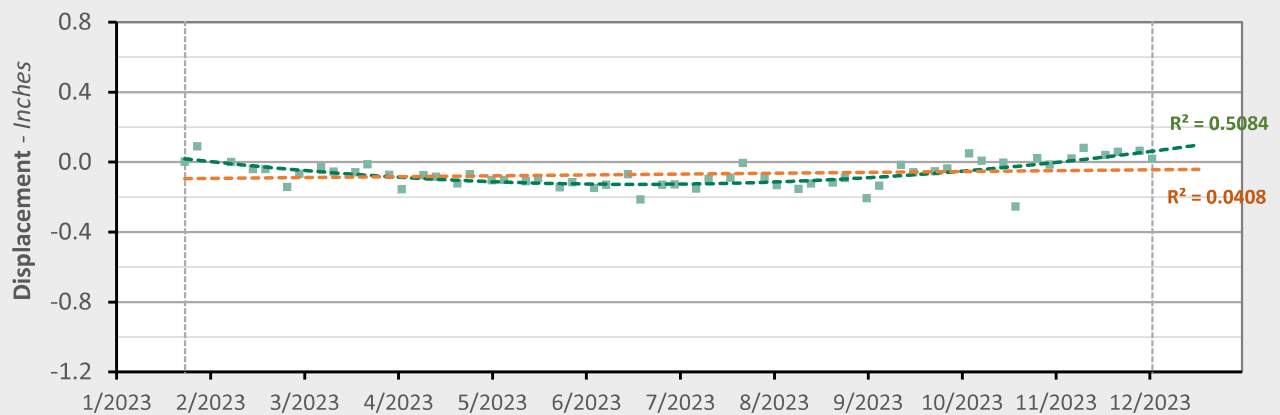
--- Nonlinear Trend Line
(Quadratic Regression)--- Linear Trend Line
(Linear Regression)

AOI 2 - Location Map



AOI 2 - Displacement Time Series

TSX/PAZ (12/2/2023) Point Count: 24



Nonlinear Trend

Linear Trend

Velocity: +0.83 in/yr

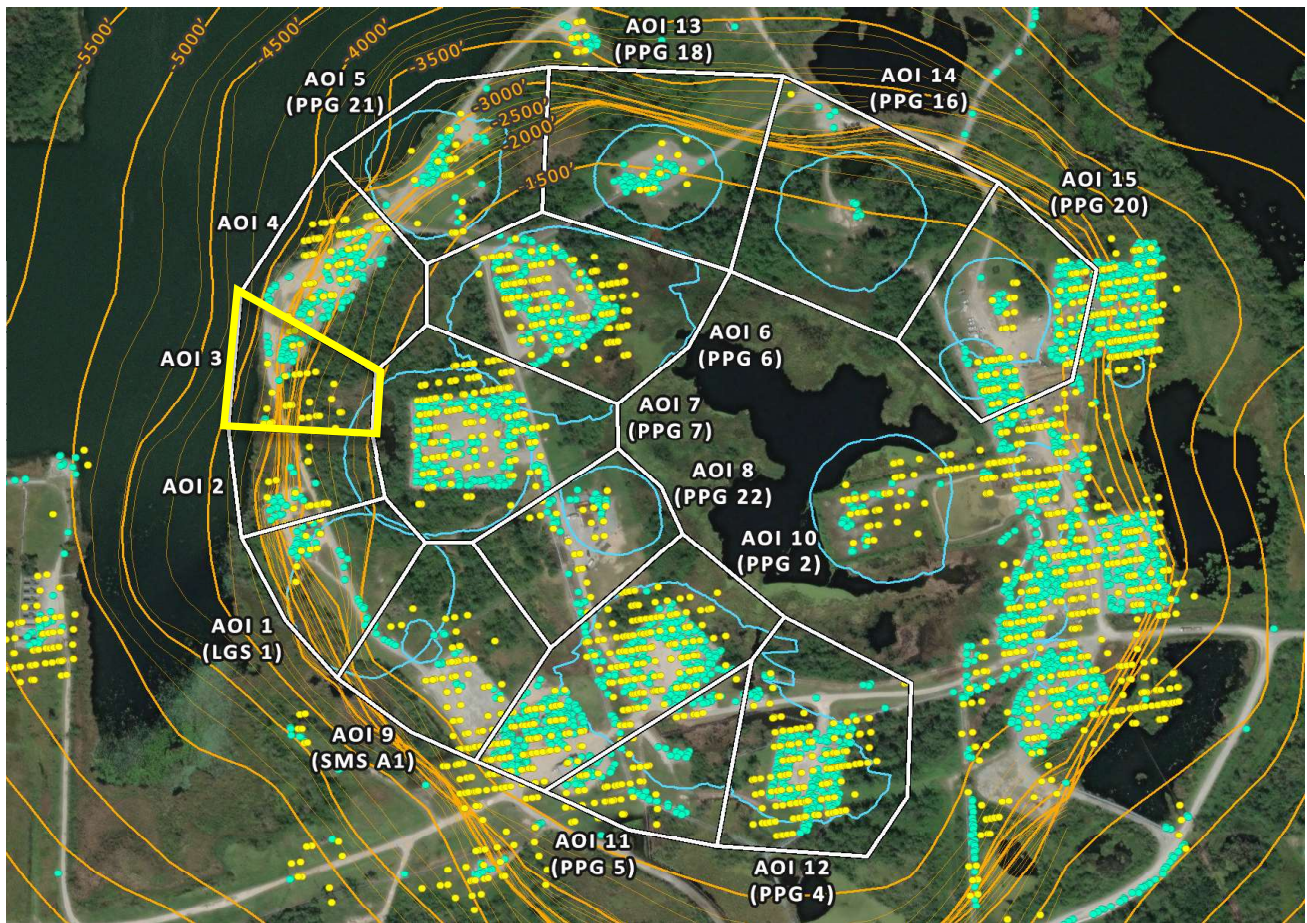
+0.06 in/yr

Acceleration: +1.83 in/yr²0.00 in/yr²

■ LOS Displacement Measurement

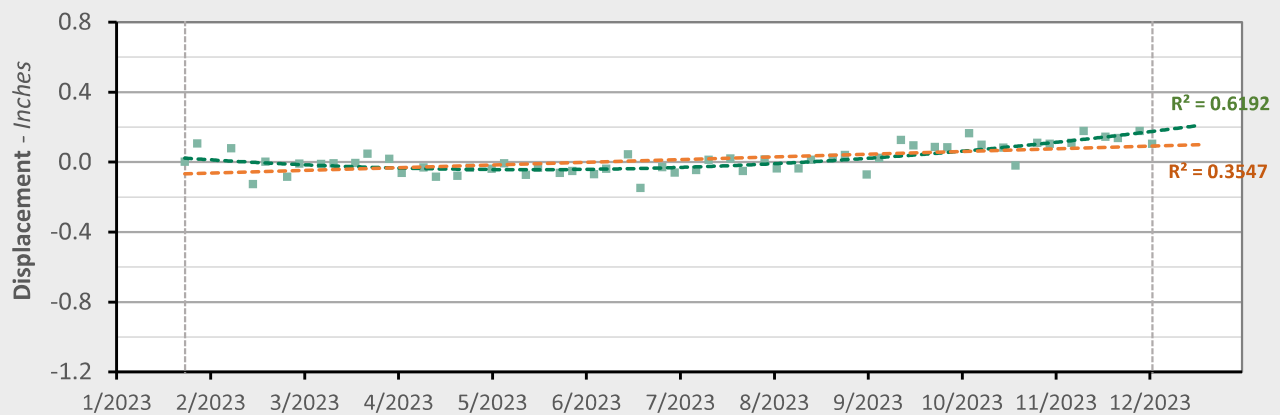
--- Nonlinear Trend Line
(Quadratic Regression)--- Linear Trend Line
(Linear Regression)

AOI 3 - Location Map



AOI 3 - Displacement Time Series

TSX/PAZ (12/2/2023) Point Count: 39

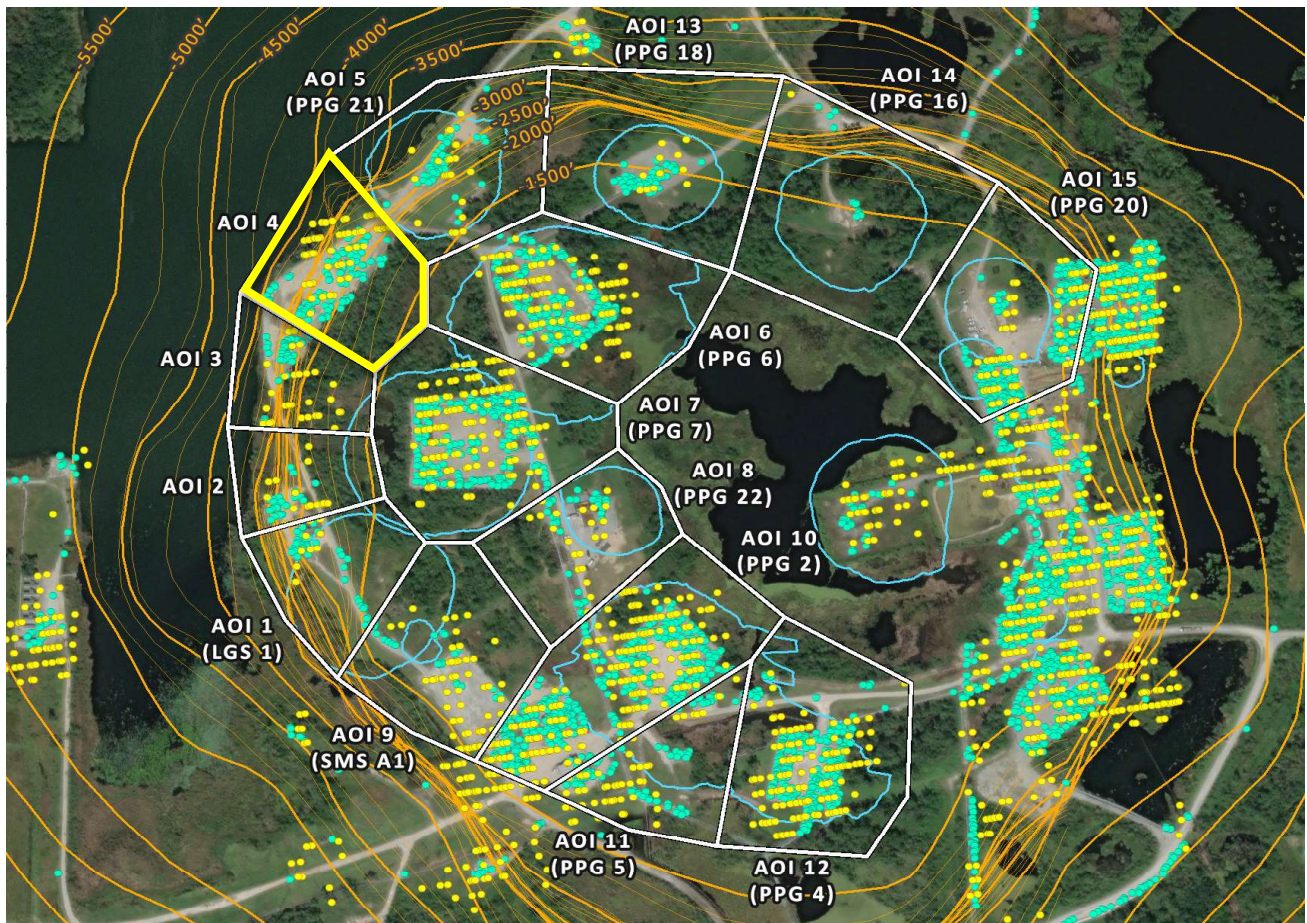


	Nonlinear Trend	Linear Trend
Velocity:	+0.79 in/yr	+0.19 in/yr
Acceleration:	+1.44 in/yr ²	0.00 in/yr ²

■ LOS Displacement Measurement

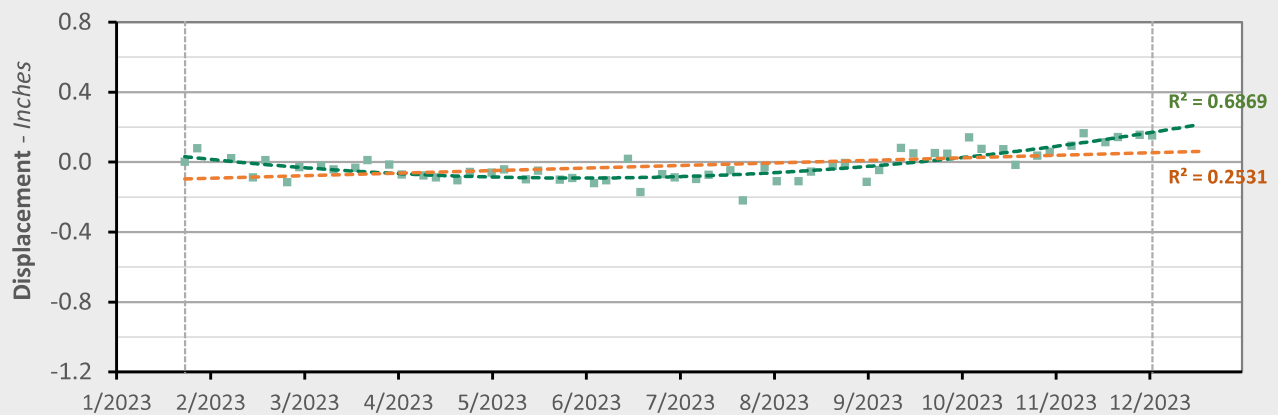
--- Nonlinear Trend Line
(Quadratic Regression)--- Linear Trend Line
(Linear Regression)

AOI 4 - Location Map



AOI 4 - Displacement Time Series

TSX/PAZ (12/2/2023) Point Count: 403



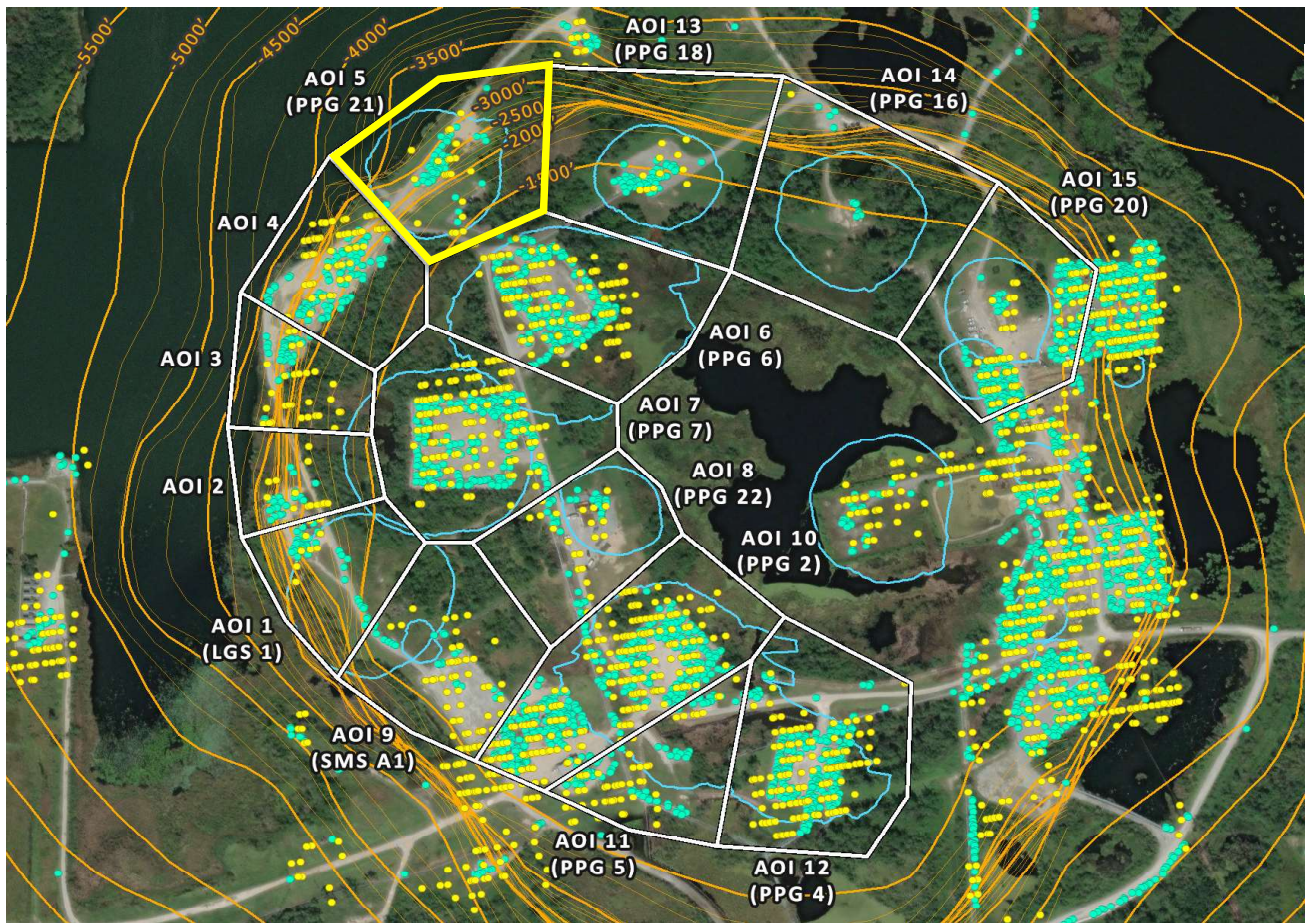
	Nonlinear Trend	Linear Trend
Velocity:	+1.03 in/yr	+0.17 in/yr
Acceleration:	+2.03 in/yr ²	0.00 in/yr ²

■ LOS Displacement Measurement

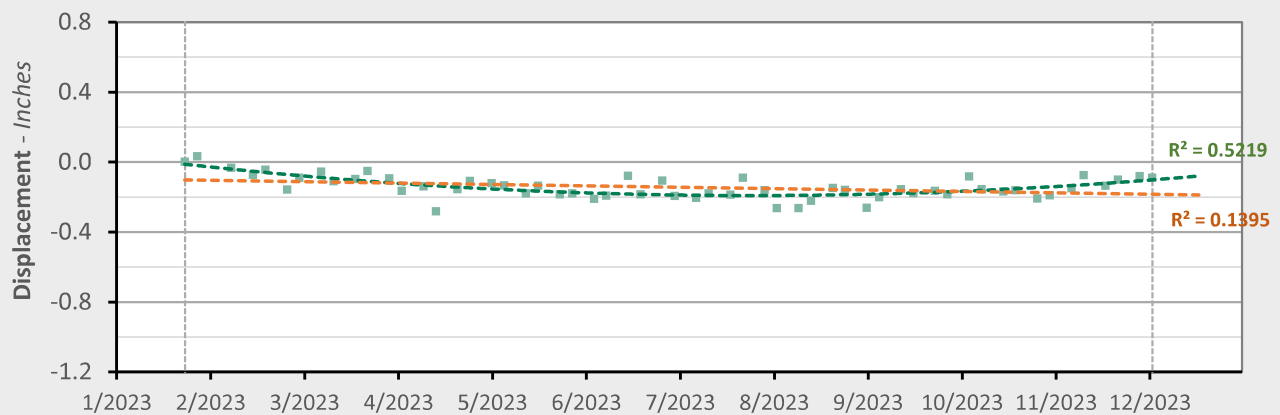
--- Nonlinear Trend Line
(Quadratic Regression)

--- Linear Trend Line
(Linear Regression)

AOI 5 (PPG 21) - Location Map



AOI 5 (PPG 21) - Displacement Time Series TSX/PAZ (12/2/2023) Point Count: 84



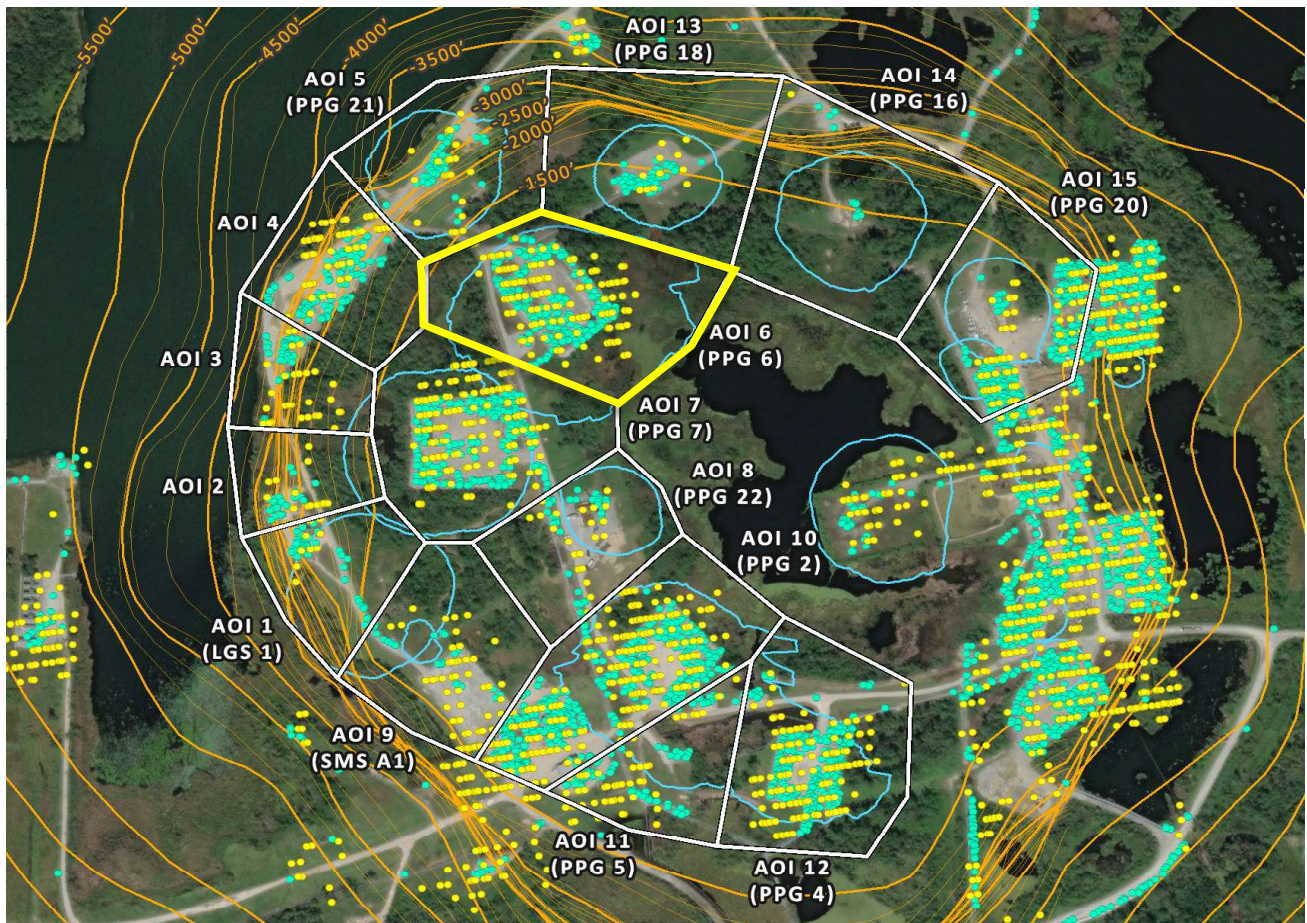
	Nonlinear Trend	Linear Trend
Velocity:	+0.51 in/yr	-0.10 in/yr
Acceleration:	+1.43 in/yr ²	0.00 in/yr ²

■ LOS Displacement Measurement

--- Nonlinear Trend Line
(Quadratic Regression)

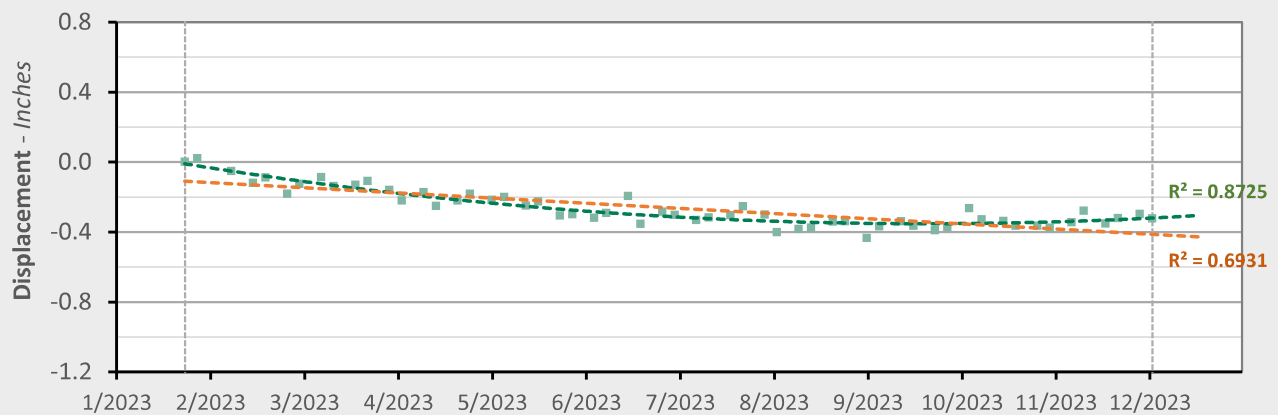
--- Linear Trend Line
(Linear Regression)

AOI 6 (PPG 6) - Location Map



AOI 6 (PPG 6) - Displacement Time Series

TSX/PAZ (12/2/2023) Point Count: 264

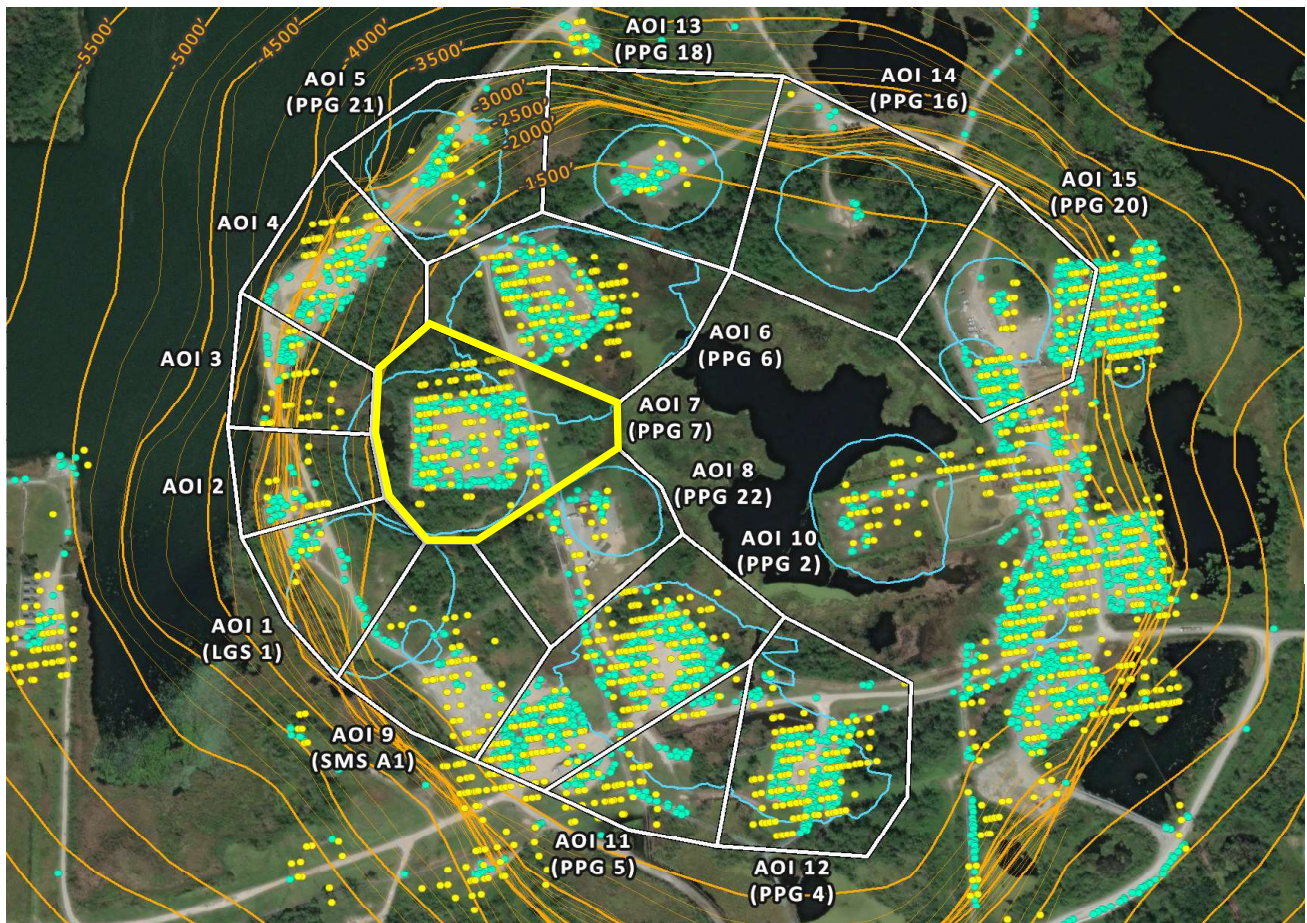


	Nonlinear Trend	Linear Trend
Velocity:	+0.32 in/yr	-0.35 in/yr
Acceleration:	+1.61 in/yr ²	0.00 in/yr ²

■ LOS Displacement Measurement

--- Nonlinear Trend Line
(Quadratic Regression)--- Linear Trend Line
(Linear Regression)

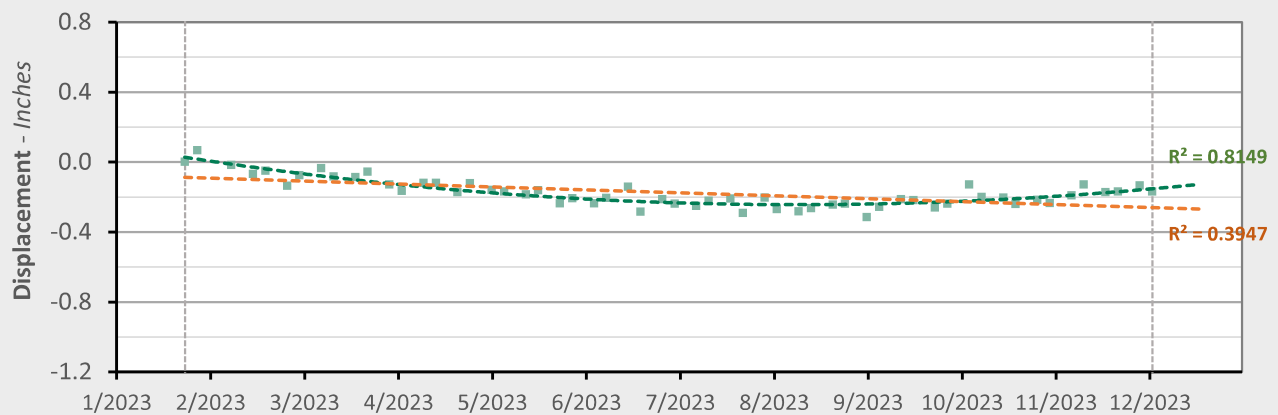
AOI 7 (PPG 7) - Location Map



AOI 7 (PPG 7) - Displacement Time Series

TSX/PAZ (12/2/2023) Point Count:

52

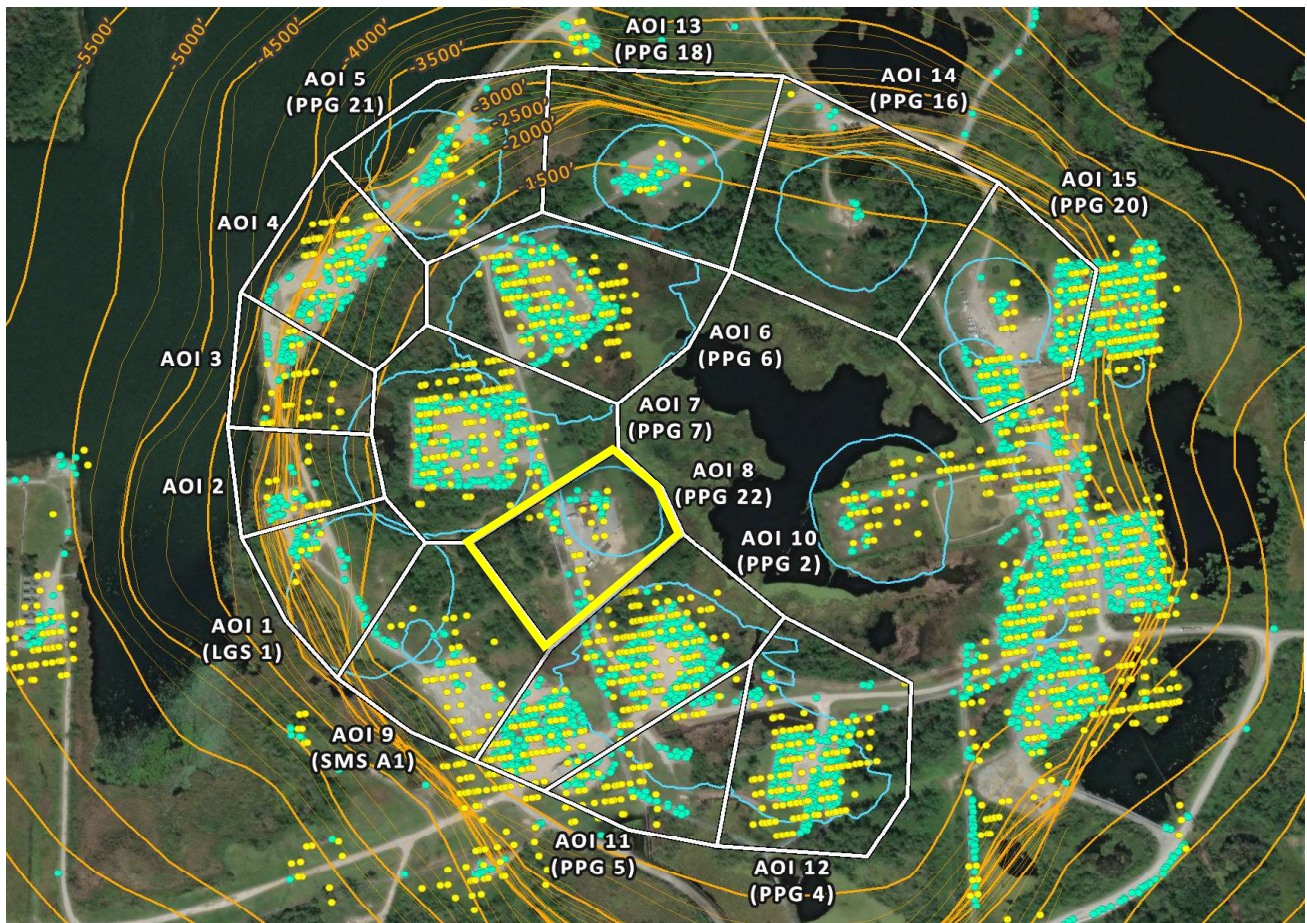


	Nonlinear Trend	Linear Trend
Velocity:	+0.58 in/yr	-0.20 in/yr
Acceleration:	+1.85 in/yr ²	0.00 in/yr ²

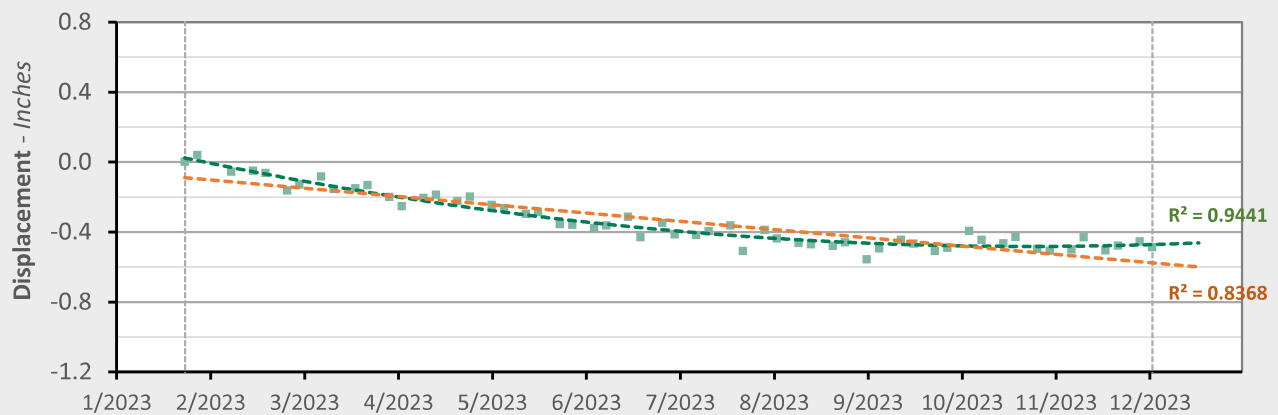
■ LOS Displacement Measurement

--- Nonlinear Trend Line
(Quadratic Regression)--- Linear Trend Line
(Linear Regression)

AOI 8 (PPG 22) - Location Map



AOI 8 (PPG 22) - Displacement Time Series TSX/PAZ (12/2/2023) Point Count: 11



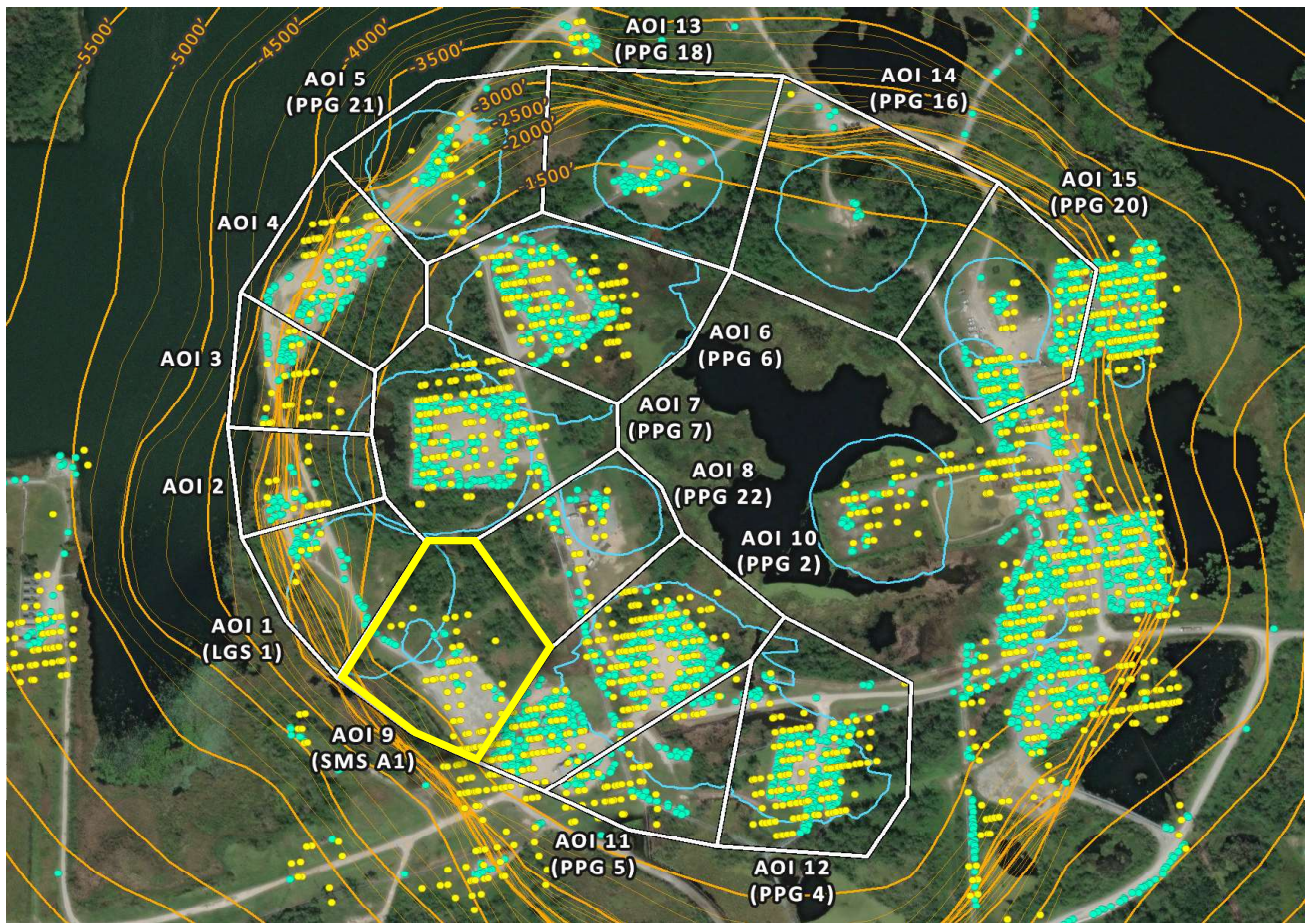
	Nonlinear Trend	Linear Trend
Velocity:	+0.20 in/yr	-0.57 in/yr
Acceleration:	+1.82 in/yr ²	0.00 in/yr ²

■ LOS Displacement Measurement

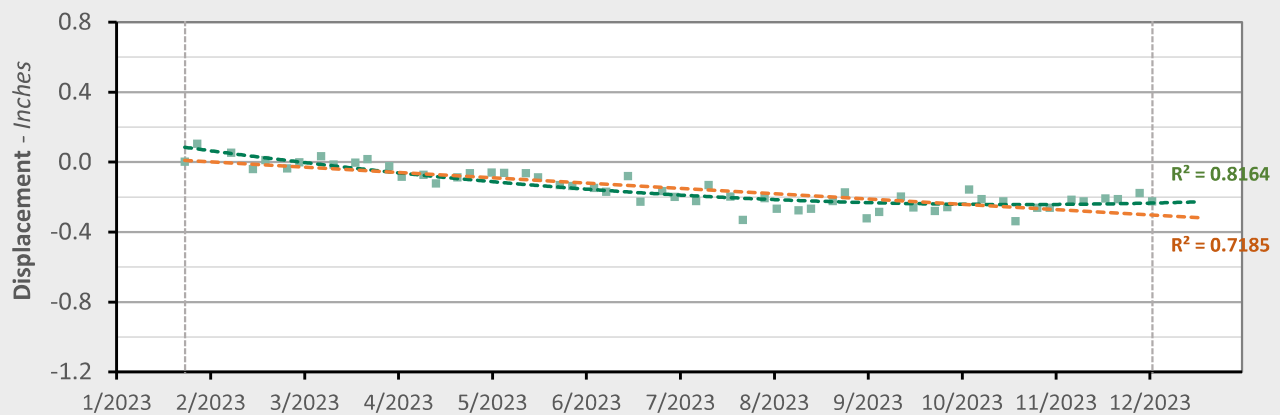
--- Nonlinear Trend Line
(Quadratic Regression)

--- Linear Trend Line
(Linear Regression)

AOI 9 (PPG A1) - Location Map



AOI 9 (SMS A1) - Displacement Time Series TSX/PAZ (12/2/2023) Point Count: 224



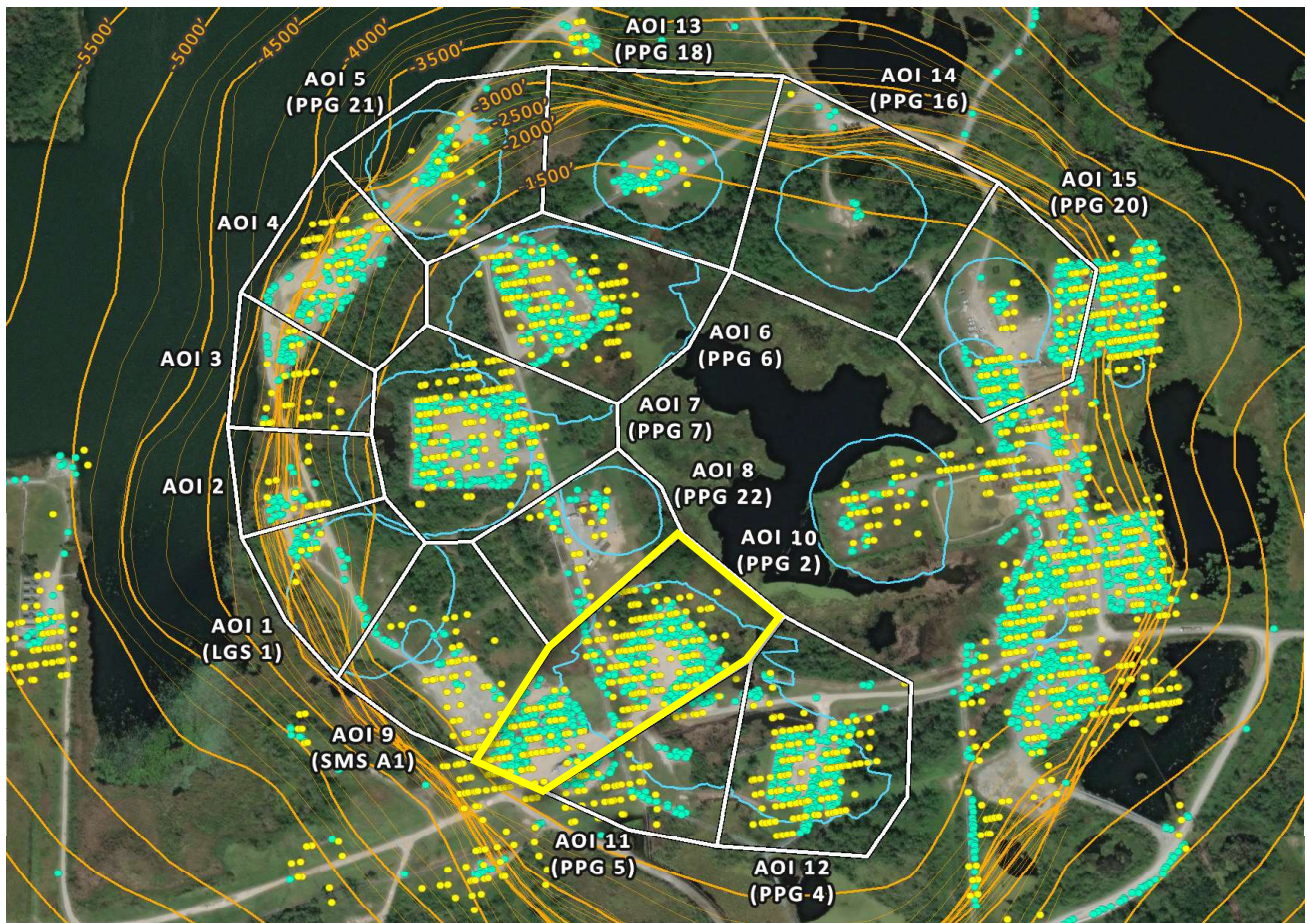
	Nonlinear Trend	Linear Trend
Velocity:	+0.14 in/yr	-0.37 in/yr
Acceleration:	+1.21 in/yr ²	0.00 in/yr ²

■ LOS Displacement Measurement

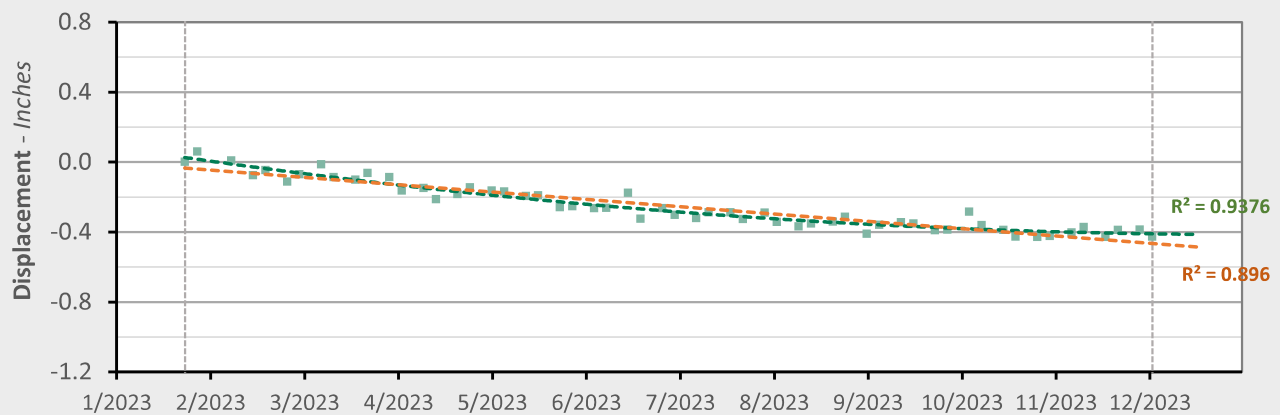
--- Nonlinear Trend Line
(Quadratic Regression)

--- Linear Trend Line
(Linear Regression)

AOI 10 (PPG 2) - Location Map



AOI 10 (PPG 2) - Displacement Time Series TSX/PAZ (12/2/2023) Point Count: 403



	Nonlinear Trend	Linear Trend
Velocity:	-0.10 in/yr	-0.51 in/yr
Acceleration:	+0.97 in/yr ²	0.00 in/yr ²

■ LOS Displacement Measurement

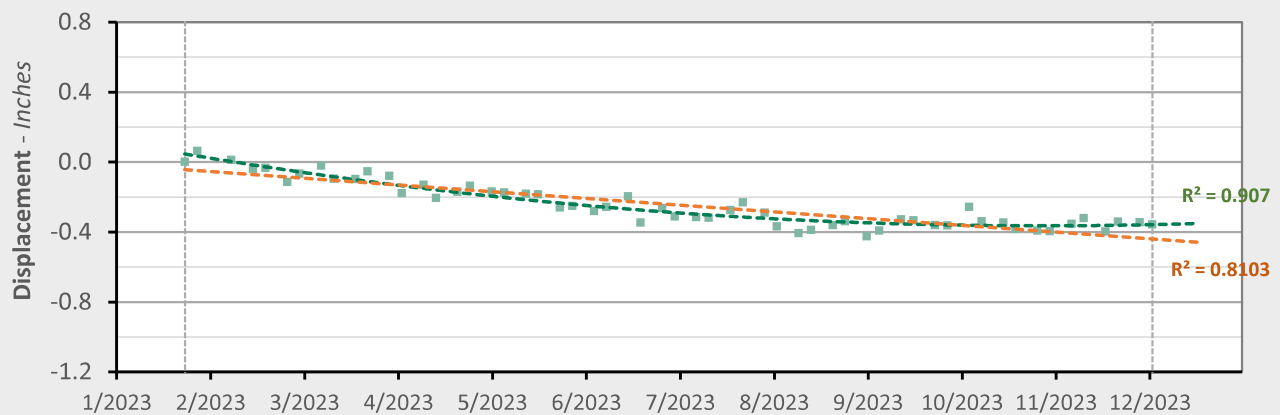
--- Nonlinear Trend Line
(Quadratic Regression)

--- Linear Trend Line
(Linear Regression)

AOI 11 (PPG 5) - Location Map



AOI 11 (PPG 5) - Displacement Time Series TSX/PAZ (12/2/2023) Point Count: 84

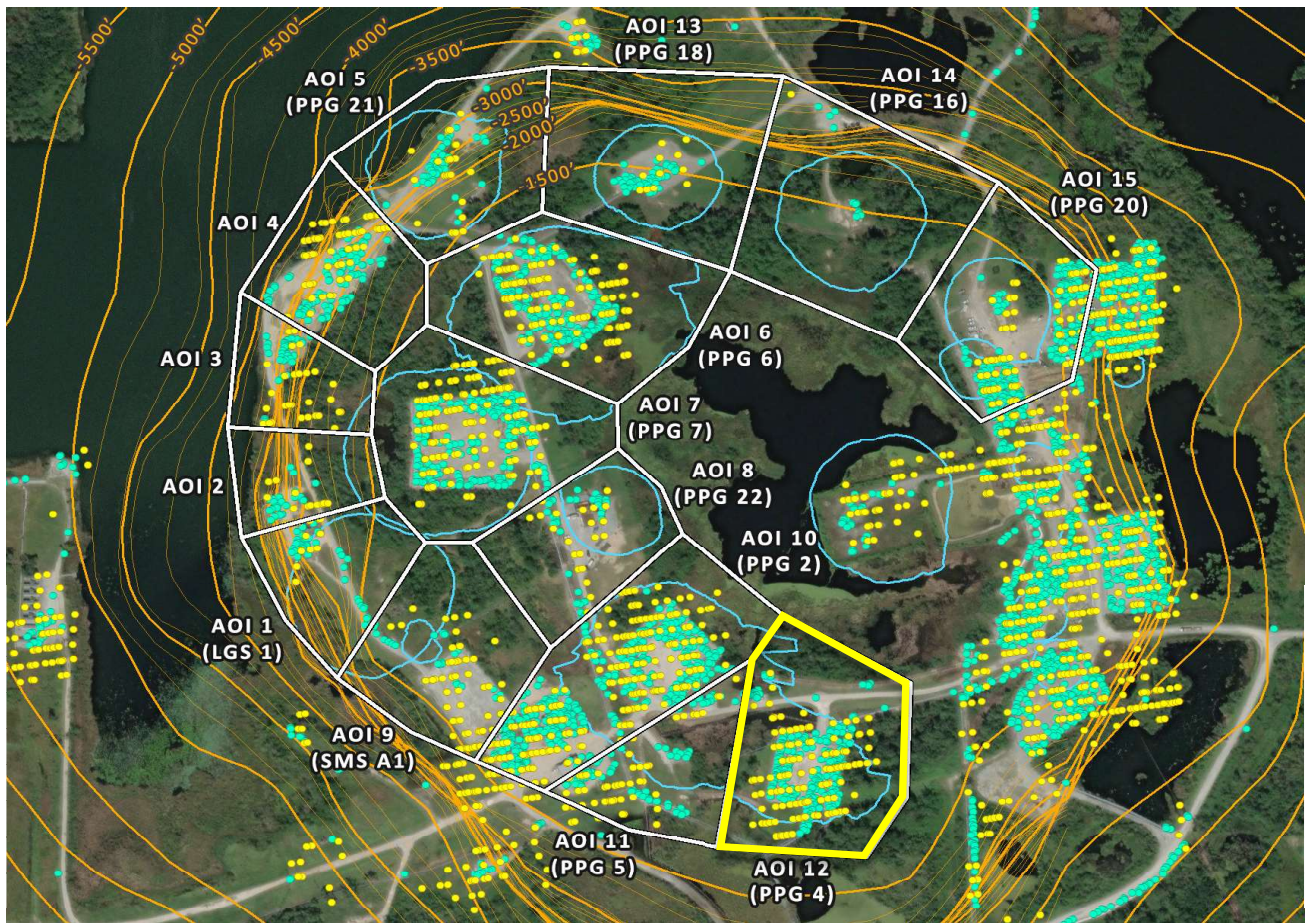


	Nonlinear Trend	Linear Trend
Velocity:	+0.14 in/yr	-0.46 in/yr
Acceleration:	+1.43 in/yr ²	0.00 in/yr ²

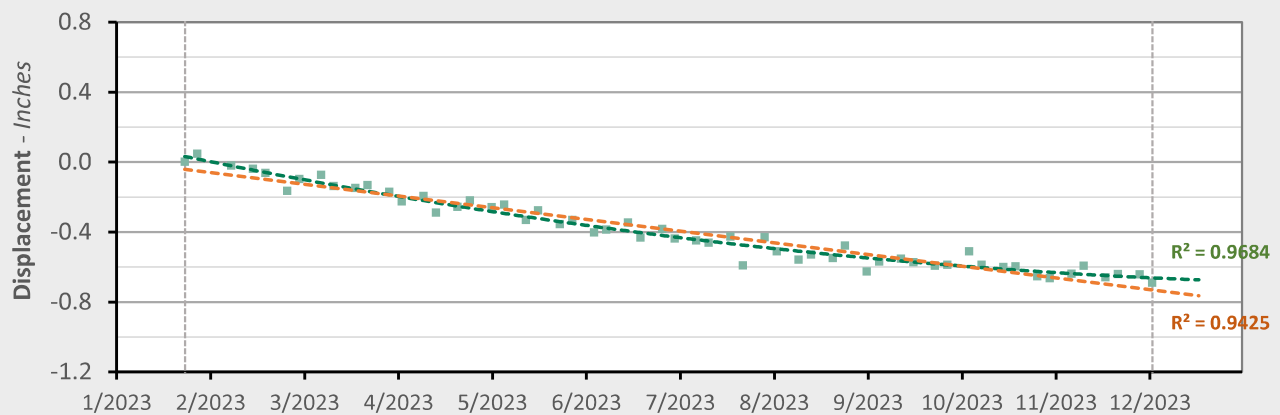
■ LOS Displacement Measurement

--- Nonlinear Trend Line
(Quadratic Regression)--- Linear Trend Line
(Linear Regression)

AOI 12 (PPG 4) - Location Map



AOI 12 (PPG 4) - Displacement Time Series TSX/PAZ (12/2/2023) Point Count: 264



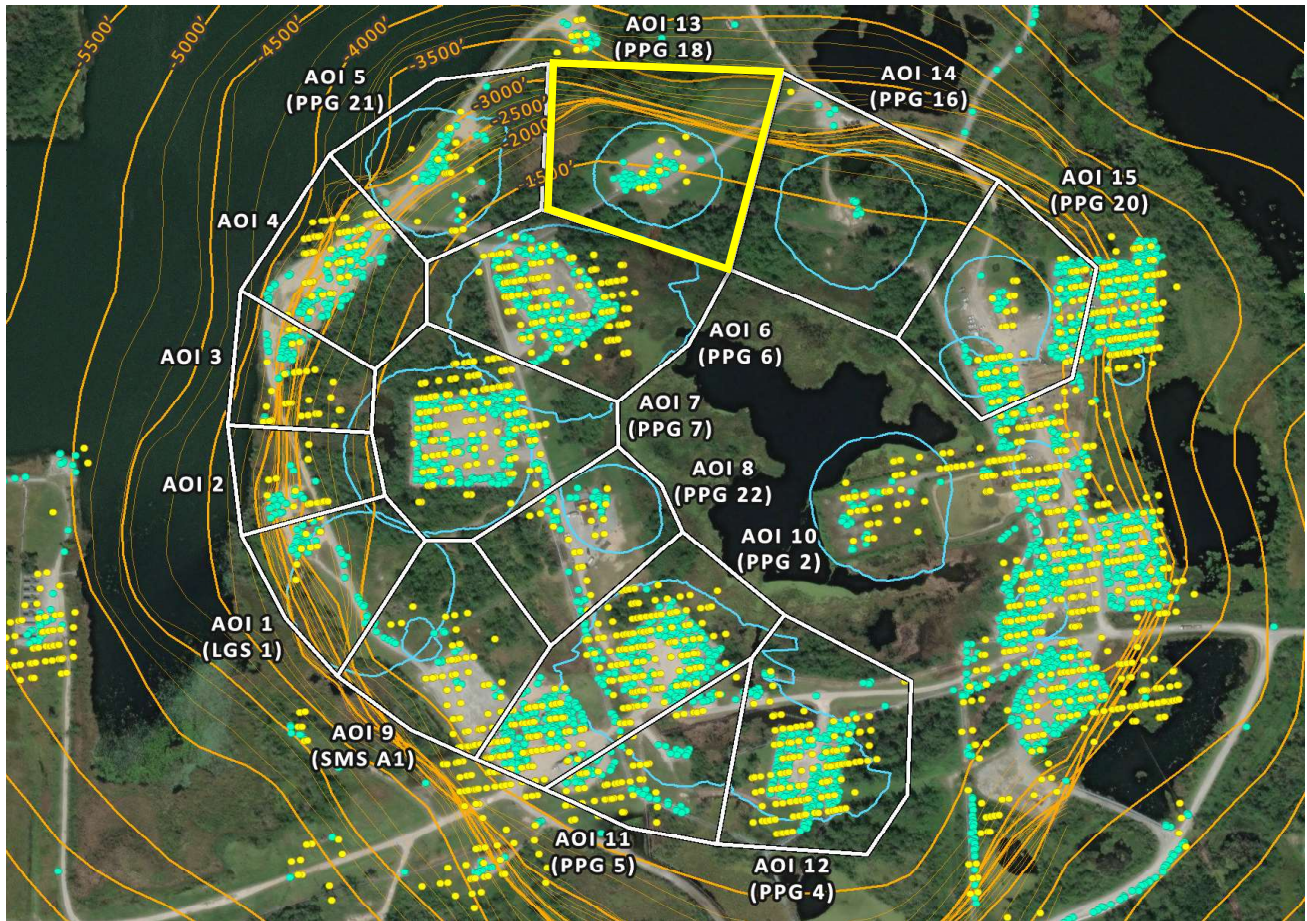
	Nonlinear Trend	Linear Trend
Velocity:	-0.30 in/yr	-0.81 in/yr
Acceleration:	+1.19 in/yr ²	0.00 in/yr ²

■ LOS Displacement Measurement

--- Nonlinear Trend Line
(Quadratic Regression)

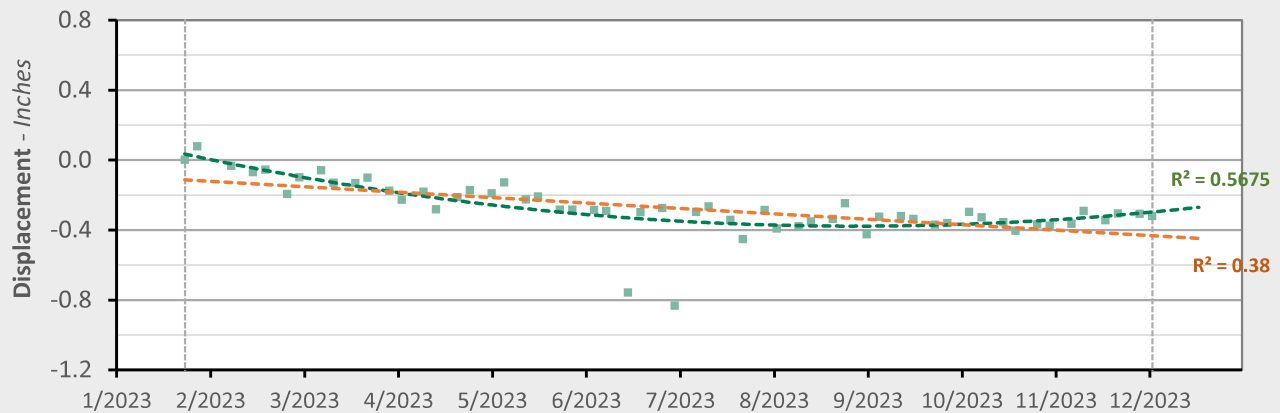
--- Linear Trend Line
(Linear Regression)

AOI 13 (PPG 18) - Location Map



AOI 13 (PPG 18) - Displacement Time Series

TSX/PAZ (12/2/2023) Point Count: 52



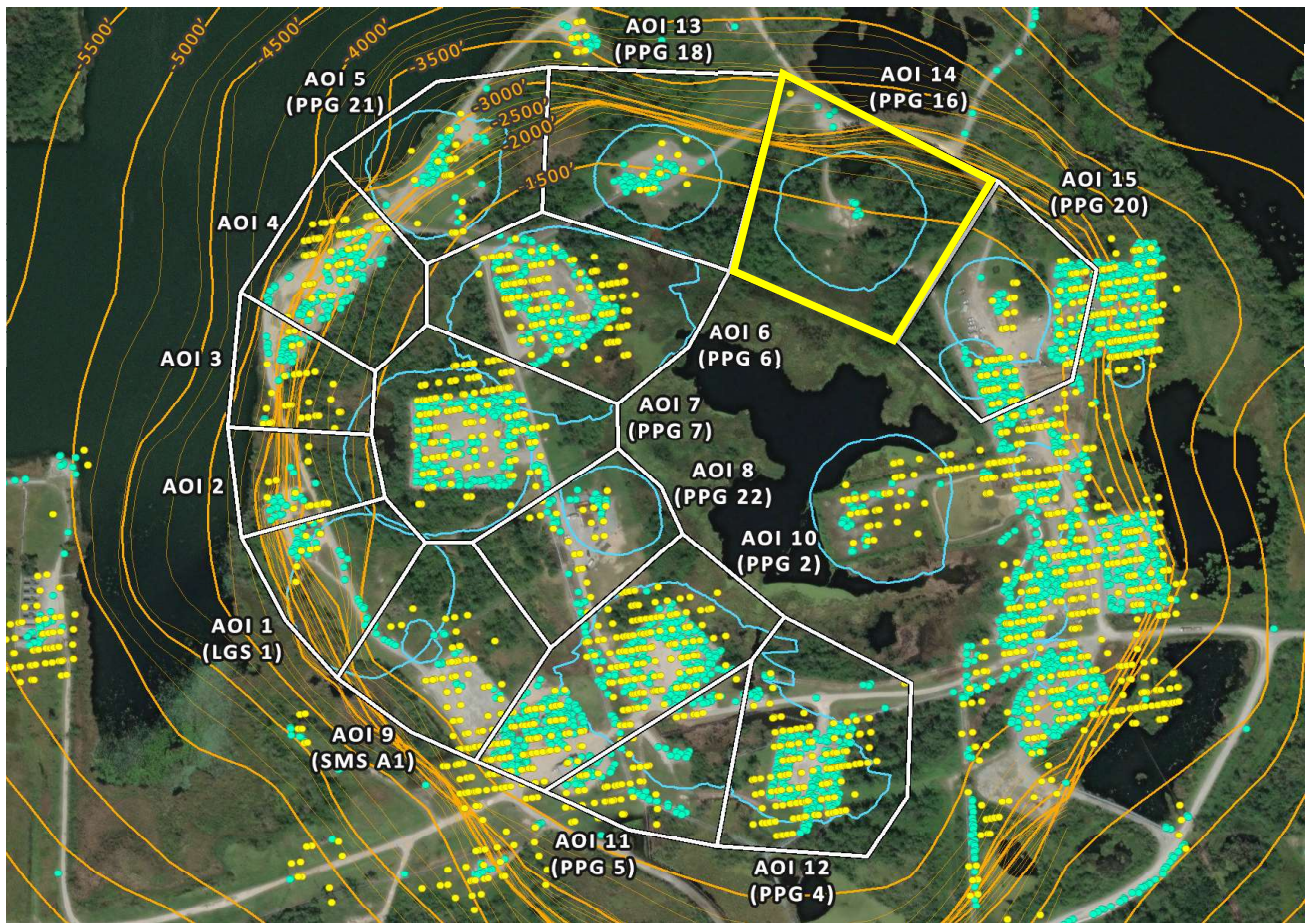
	Nonlinear Trend	Linear Trend
Velocity:	+0.61 in/yr	-0.37 in/yr
Acceleration:	+2.35 in/yr ²	0.00 in/yr ²

■ LOS Displacement Measurement

--- Nonlinear Trend Line
(Quadratic Regression)

--- Linear Trend Line
(Linear Regression)

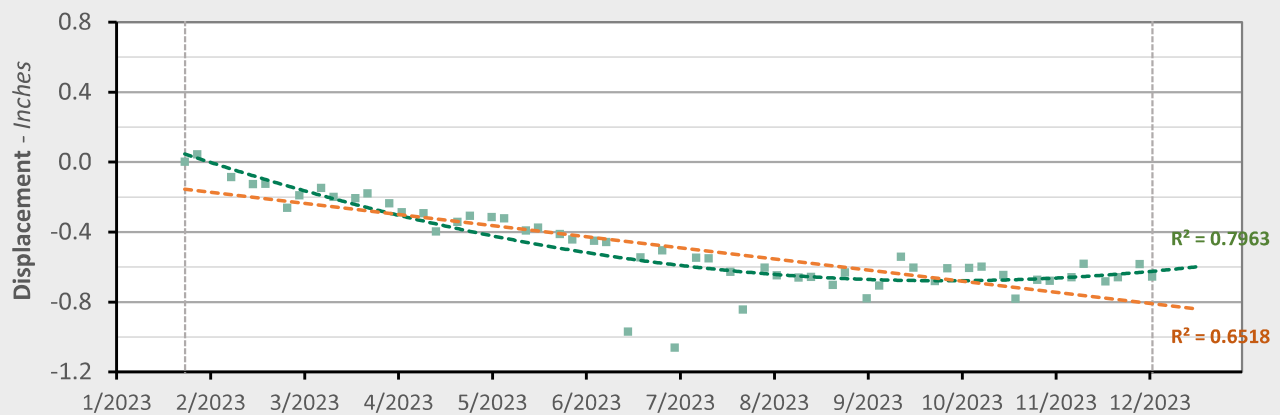
AOI 14 (PPG 16) - Location Map



AOI 14 (PPG 16) - Displacement Time Series

TSX/PAZ (12/2/2023) Point Count:

11



Nonlinear Trend

Linear Trend

Velocity: +0.59 in/yr

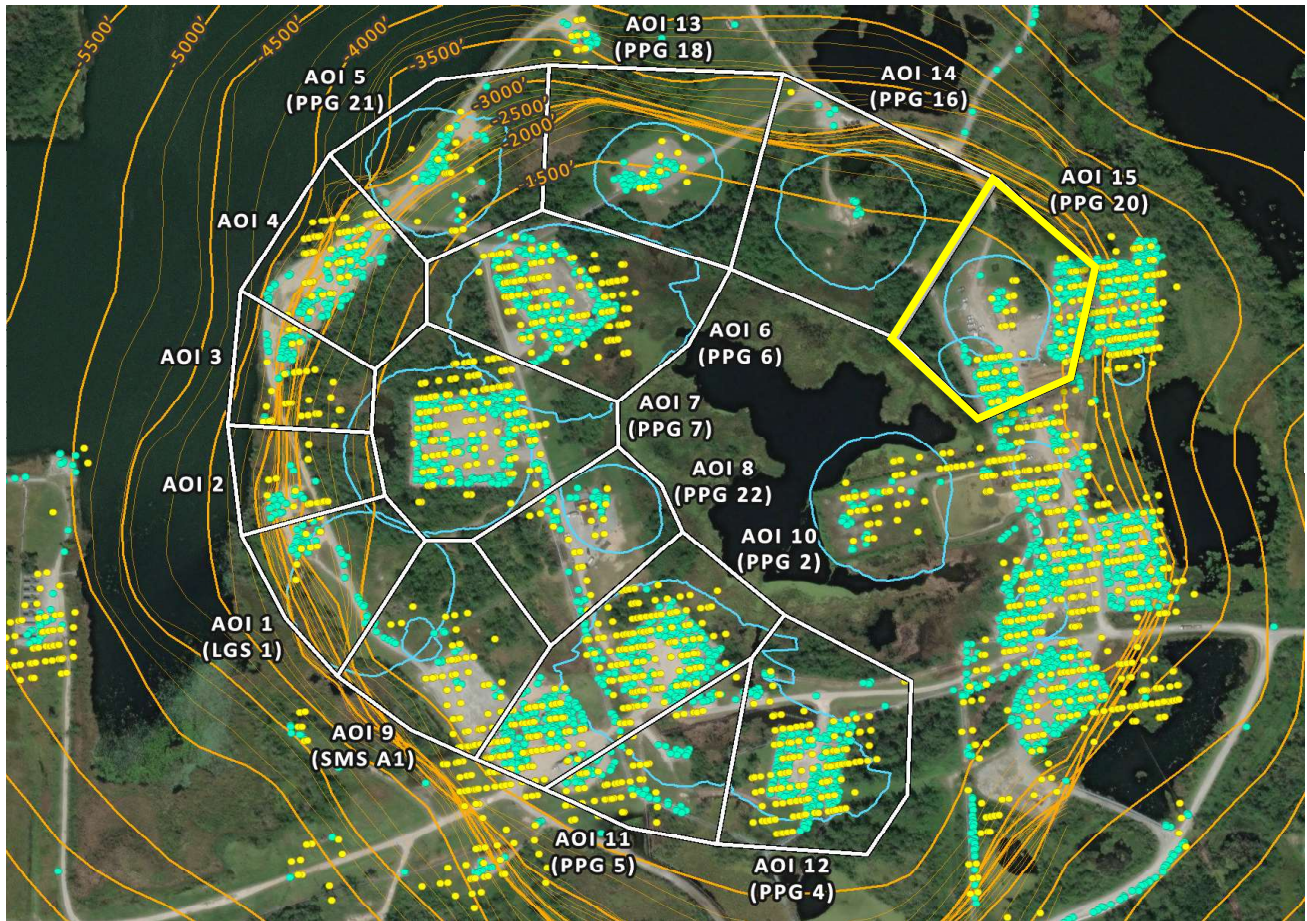
-0.77 in/yr

Acceleration: +3.22 in/yr²0.00 in/yr²

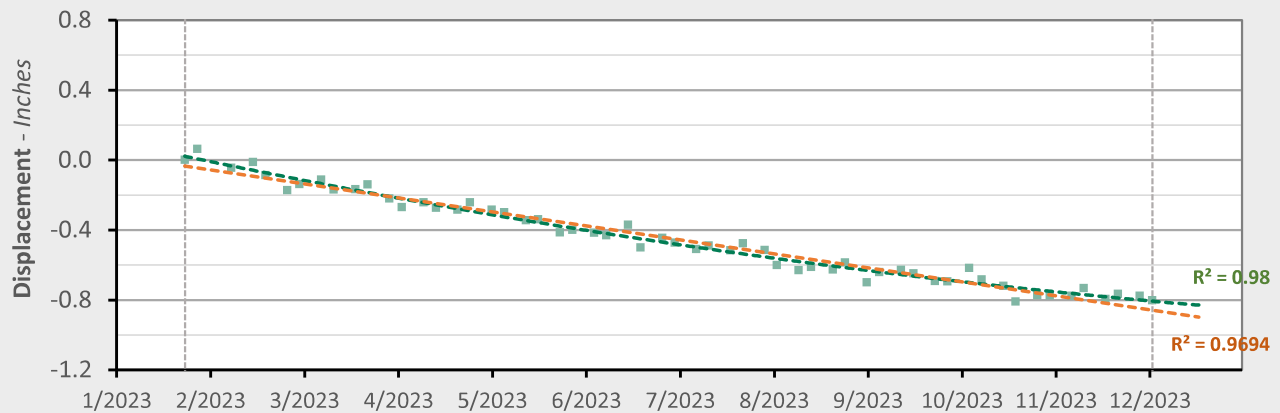
■ LOS Displacement Measurement

--- Nonlinear Trend Line
(Quadratic Regression)--- Linear Trend Line
(Linear Regression)

AOI 15 (PPG 20) - Location Map



AOI 15 (PPG 20) - Displacement Time Series TSX/PAZ (12/2/2023) Point Count: 224



	Nonlinear Trend	Linear Trend
Velocity:	-0.59 in/yr	-0.96 in/yr
Acceleration:	+0.90 in/yr ²	0.00 in/yr ²

■ LOS Displacement Measurement

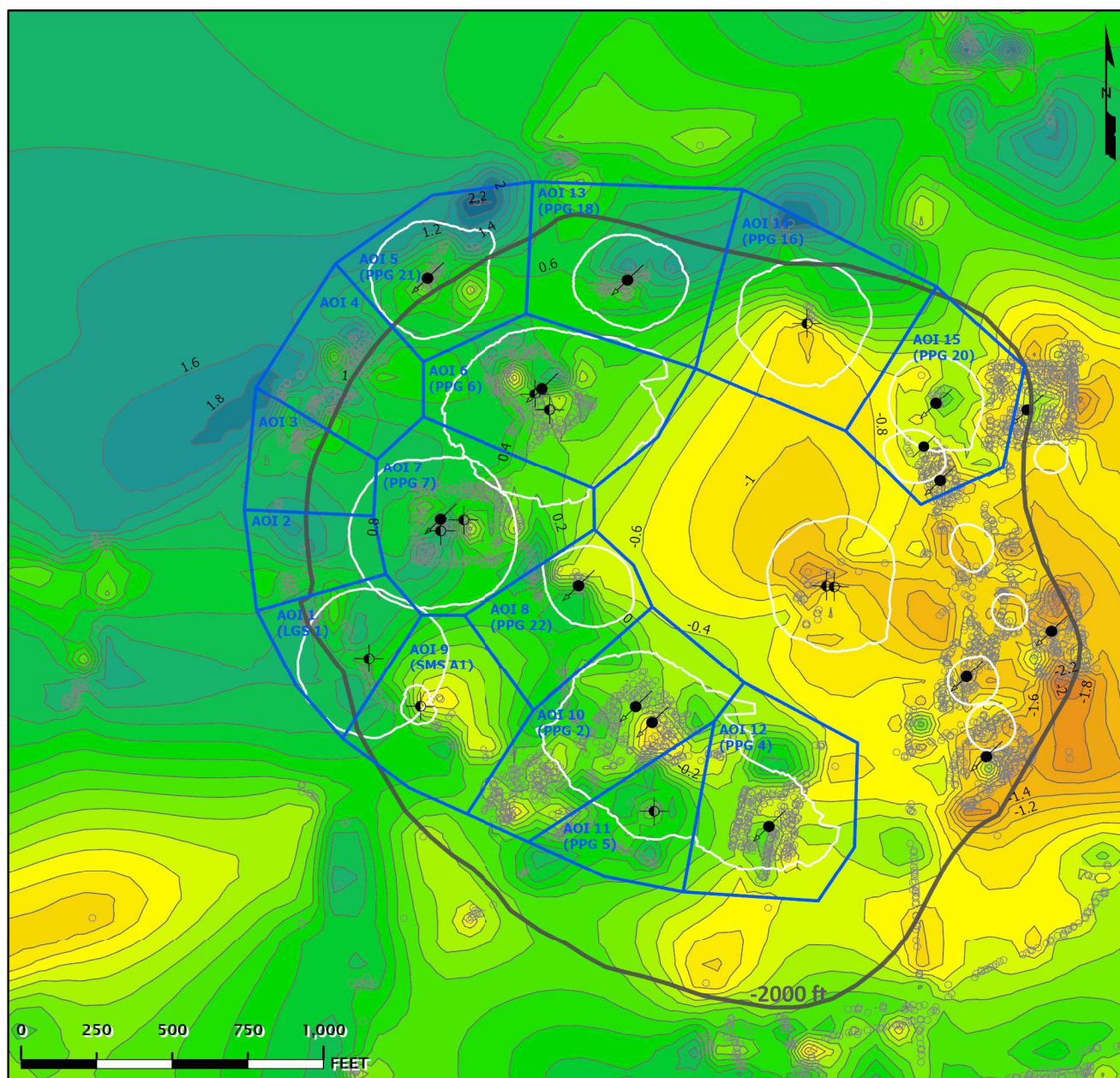
--- Nonlinear Trend Line
(Quadratic Regression)

--- Linear Trend Line
(Linear Regression)

TSX/PAZ Data (01/24/2023 - 12/02/2023)

Nonlinear Velocity Contours

As of date: 12/02/2023



- Legend:
- AOI Boundary (blue outline)
 - InSAR LOS Measurement Point (black dot)
 - Contour (0.2) (grey line)
 - Historical Cavern Extent (white outline)
 - Top of Dome (-2000 ft Contour) (grey line)

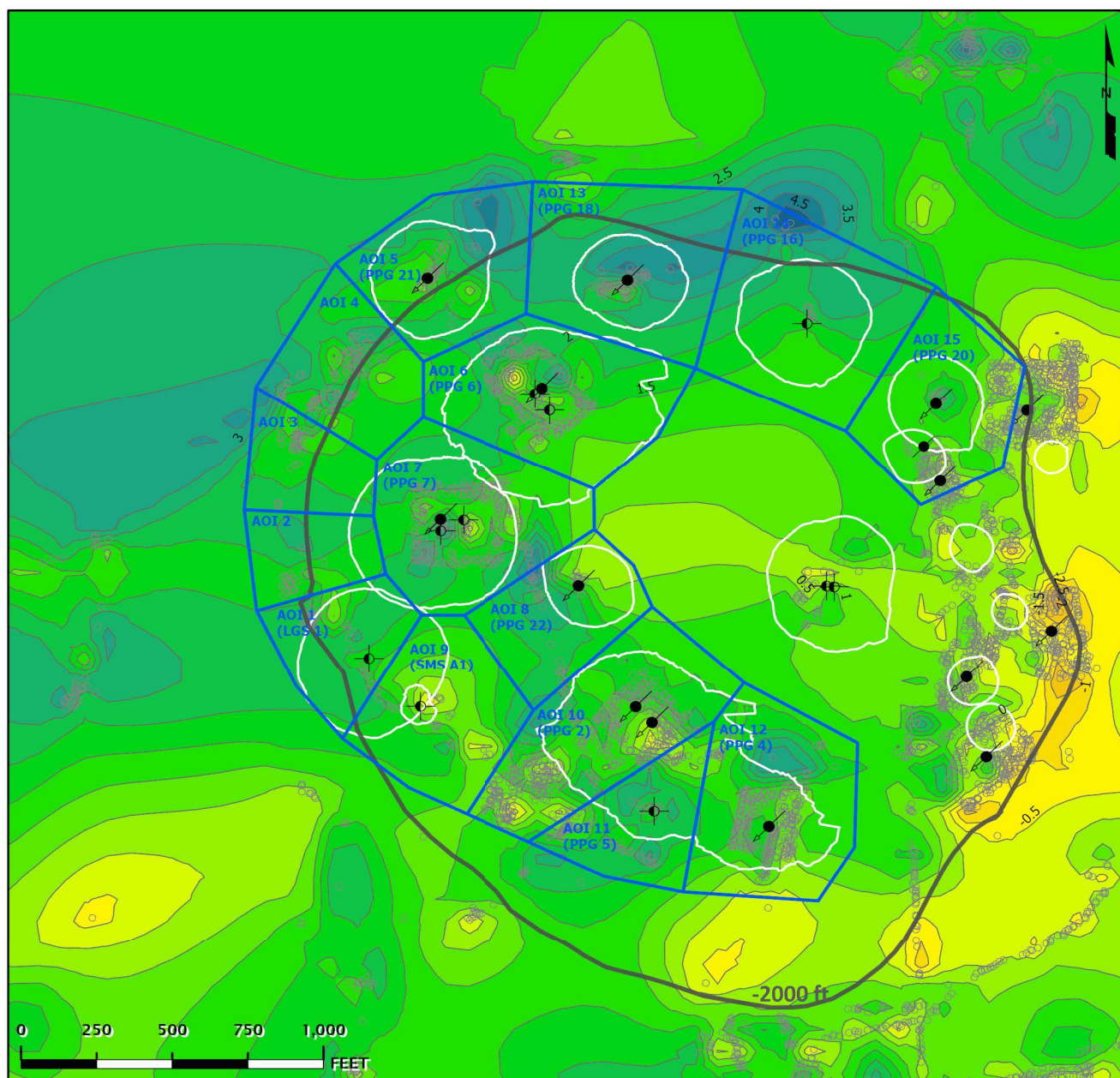
Cavern Well Surface Locations

- Legend:
- 09 - Active - Injection (black dot)
 - 29 - Dry and Plugged (black dot with cross)

TSX/PAZ Data (01/24/2023 - 12/02/2023)

Nonlinear Acceleration Contours

Date range: 01/24/2023 - 12/02/2023



- Legend:
- AOI Boundary
 - Historical Cavern Extent
 - InSAR LOS Measurement Point
 - Top of Dome (-2000 ft Contour)
 - Contour (0.5)

Cavern Well Surface Locations

- Legend:
- 09 - Active - Injection
 - 29 - Dry and Plugged

TSX/PAZ Data (01/24/2023 - 12/02/2023)

Linear Velocity Contours

Date range: 01/24/2023 - 12/02/2023

