

Surface Seismic Monitoring Report Sulphur Mines Salt Dome Broadband Seismic Array Event Location and Magnitude

Report Date: March 19, 2024

Author: Julie Shemeta, MEQGeo

Using results from Nanometrics



Julie Shemeta
3/18/2014

Summary Event Location and Magnitude

- Time: March 18, 2024 06:38:29 PM CST
- Location (ft) X 1345304, Y 579810 ; (NAD27 LA South St Pl) depth -4363 ft msl (± 2230 ft)
- Magnitude (Mw) -0.44

Comments: The event location is located ~2000 ft southeast edge of the Sulphur Mines salt dome (Figure 1). The depth is poorly constrained due to the location of the event with relation to the seismic stations.

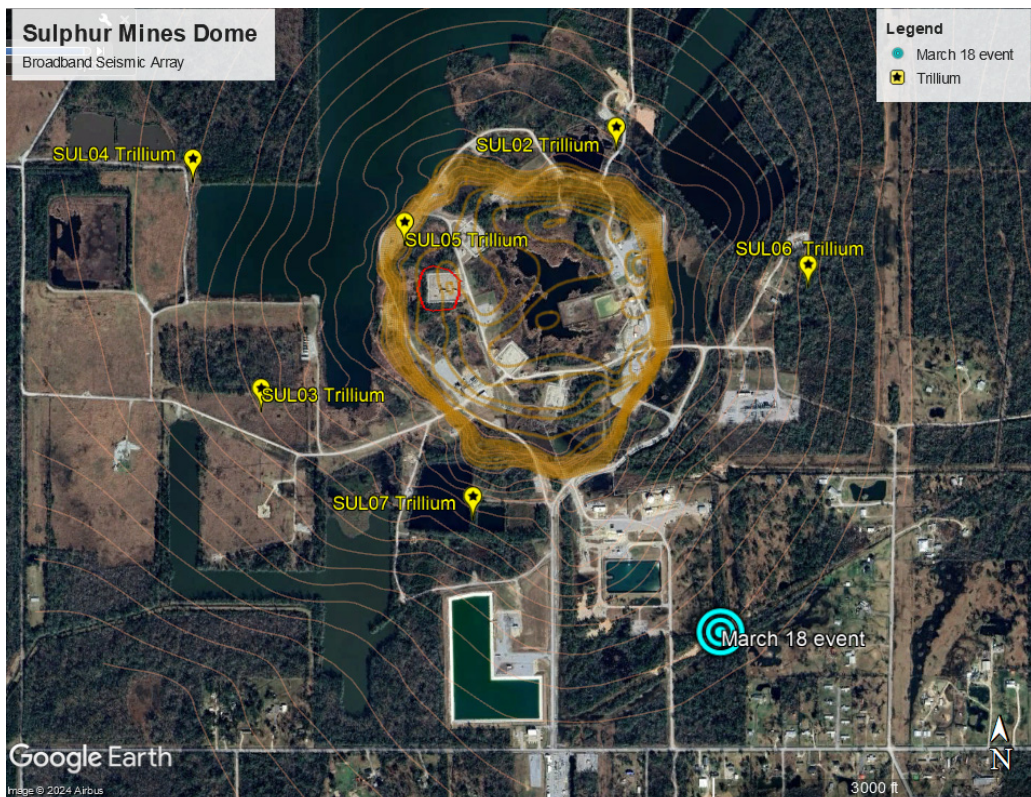


Figure 1. Aerial image of Sulphur Mines salt dome area. The March 18, 2024 event location is show by cyan dot. The Seismic station locations are show by yellow symbols