



nanometrics

Surface Seismic Monitoring Report Sulphur Mines Salt Dome Broadband Seismic Array Event Location and Magnitude

Report Date: March 27, 2024

Author: Julie Shemeta, MEQ Geo

Using results from Nanometrics



Julie Shemeta
March 27, 2024

Summary Event Locations and Magnitudes

- Date: March 27, 2024
 - Time 10:37:42 AM CST, Magnitude -0.10
 - Location (ft): X 1342423, Y 580770; (NAD27 LA South St Pl), Depth -4856 ft msl
 - Uncertainties: Horizontal ± 2289 ft, Vertical ± 1673 ft
- Time 10:38:05 AM CST, Magnitude -0.38
- Location (ft): X 1343169, Y 580267; (NAD27 LA South St Pl), Depth -4199 ft msl
- Uncertainties: Horizontal ± 1592 ft, Vertical ± 1739 ft

Comments: The events locate ~1000 ft southern edge of the Sulphur Mines salt dome (Figure 1).

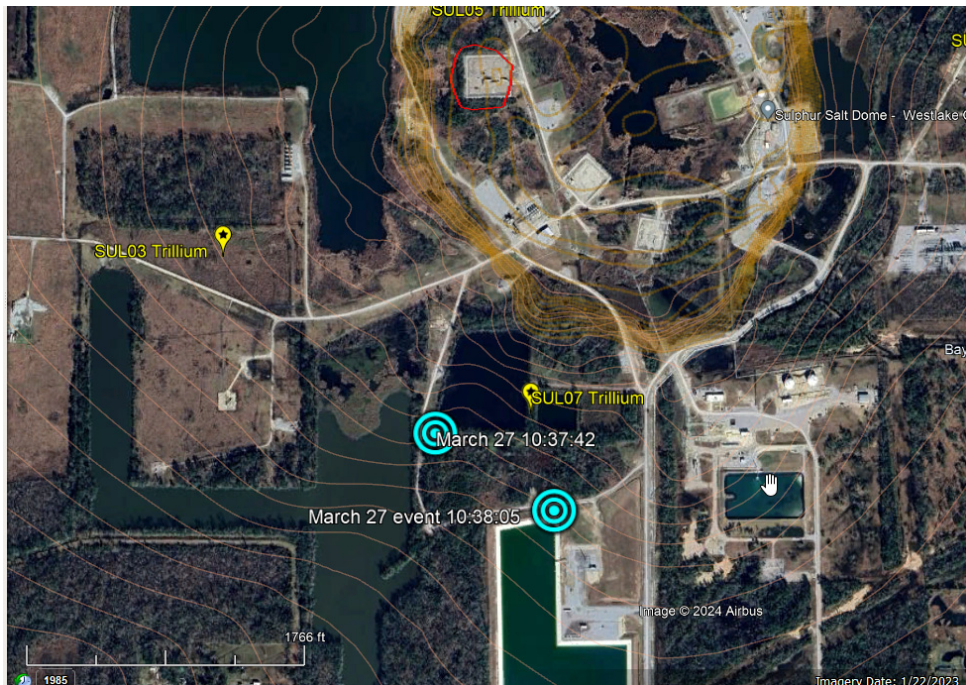


Figure 1. Aerial image of Sulphur Mines salt dome area. The March 27, 2024 event locations are show by cyan dots. The Seismic station locations are show by yellow symbol