



nanometrics

# Surface Seismic Monitoring Report Sulphur Mines Salt Dome Broadband Seismic Array Event Location and Magnitude

Report Date: April 1, 2024

Author: Julie Shemeta, MEQ Geo

Using results from Nanometrics



## Summary Event Location and Magnitude

- Date: March 30, 2024
  - Time 00:05:42 AM CDT, Magnitude -0.75
  - Location (ft): X 1345122, Y 579748; (NAD27 LA South St Pl), Depth -4204 ft msl
  - Uncertainties: Horizontal  $\pm 2703$  ft, Vertical  $\pm 2310$  ft

Comments: The event locates ~1900 ft southeast edge of the Sulphur Mines salt dome (Figure 1). The March 30 event location is in a similar location and depth for an event on March 18, 2024 06:38:29 PM CST (Figure 2).



Figure 1. Google Earth image of Sulphur Mines salt dome area. The March 30, 2024 event location is shown by a cyan dot. The seismic station locations are shown by yellow symbols.



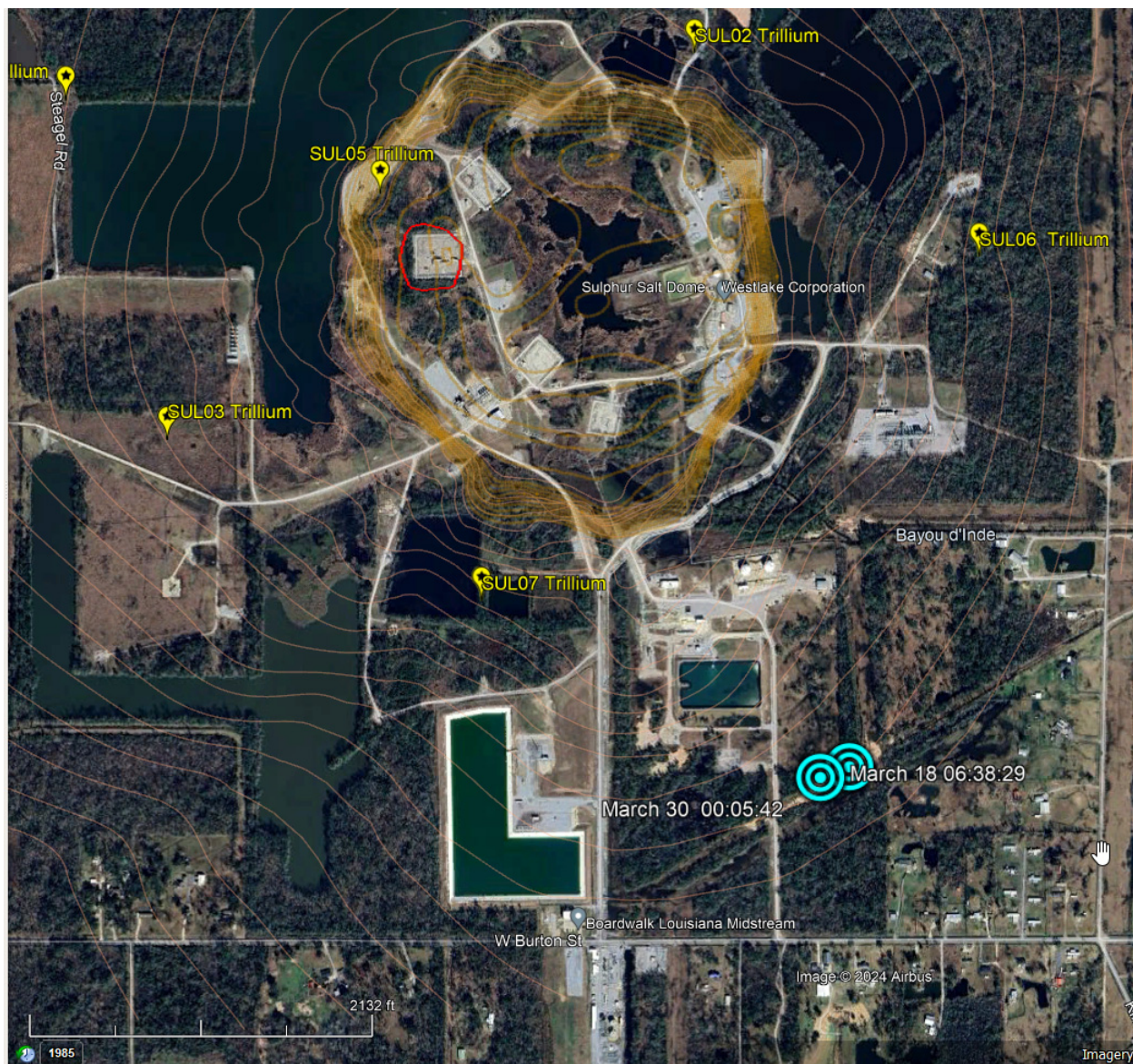


Figure 2. Google Earth image of Sulphur Mines salt dome area. The March 18 and 30, 2024 event locations are shown by cyan dots. The seismic station locations are shown by yellow symbols.