

# Surface Seismic Monitoring Report Sulphur Mines Salt Dome Broadband Seismic Array Event Location and Magnitude

Report Date: June 15, 2024

Author: Julie Shemeta, MEQ Geo

Using results from Nanometrics



## Summary Event Location and Magnitude

- Date: June 14, 2024
  - Time 05:25:21 CDT, Magnitude 0.13
  - Location (ft): X 1341102, Y 581182 ; (NAD27 LA South St Pl), Depth -5774 ft msl
  - Uncertainties: Horizontal  $\pm 2530$  ft, Vertical  $\pm 1706$  ft

Comments: The event locates ~1900' off the southwest flank of the Sulphur Mines salt dome (Figure 1), near FEE SWD 987 well. The event depth is similar to the perforation depths (upper perf 5620', lower perf 5690') listed on SONRIS (Serial No. 195916) for the SWD well.

Any information for this event on the borehole sensors will be updated on Monday.

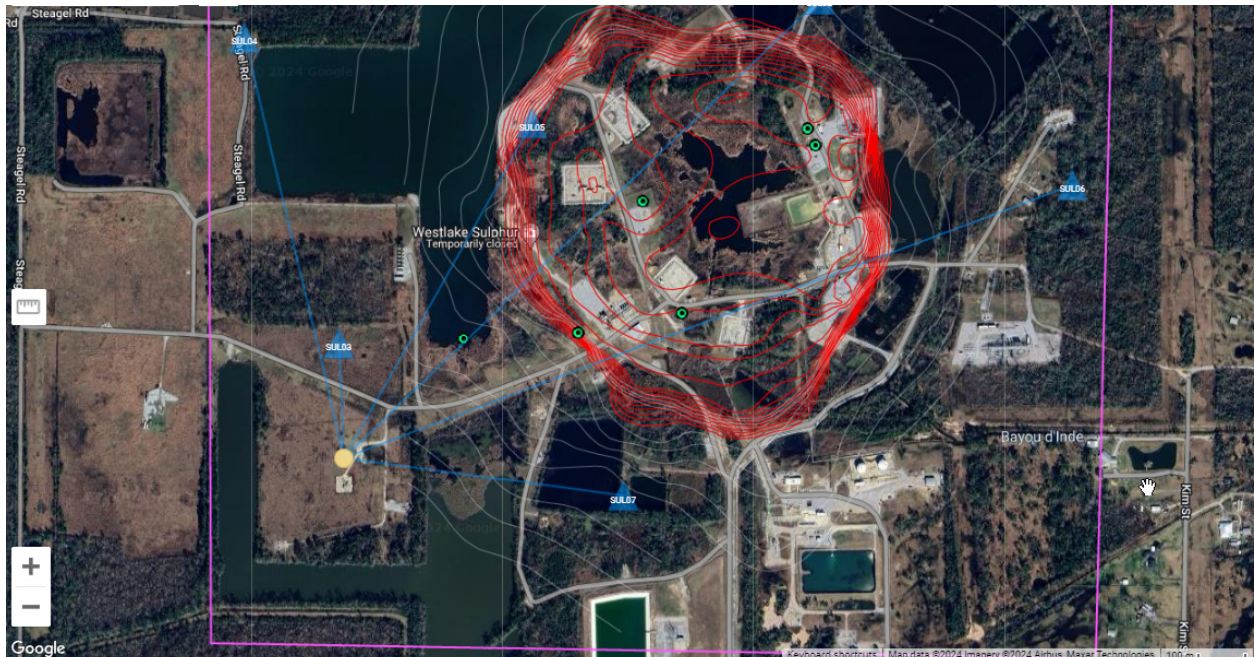


Figure 1. Google Earth image of Sulphur Mines salt dome area. The June 14, 2024 event location is show by the yellow dot. The Seismic station locations are show by blue symbols. Lines indicate salt (blue) and cap rock (red) contours.