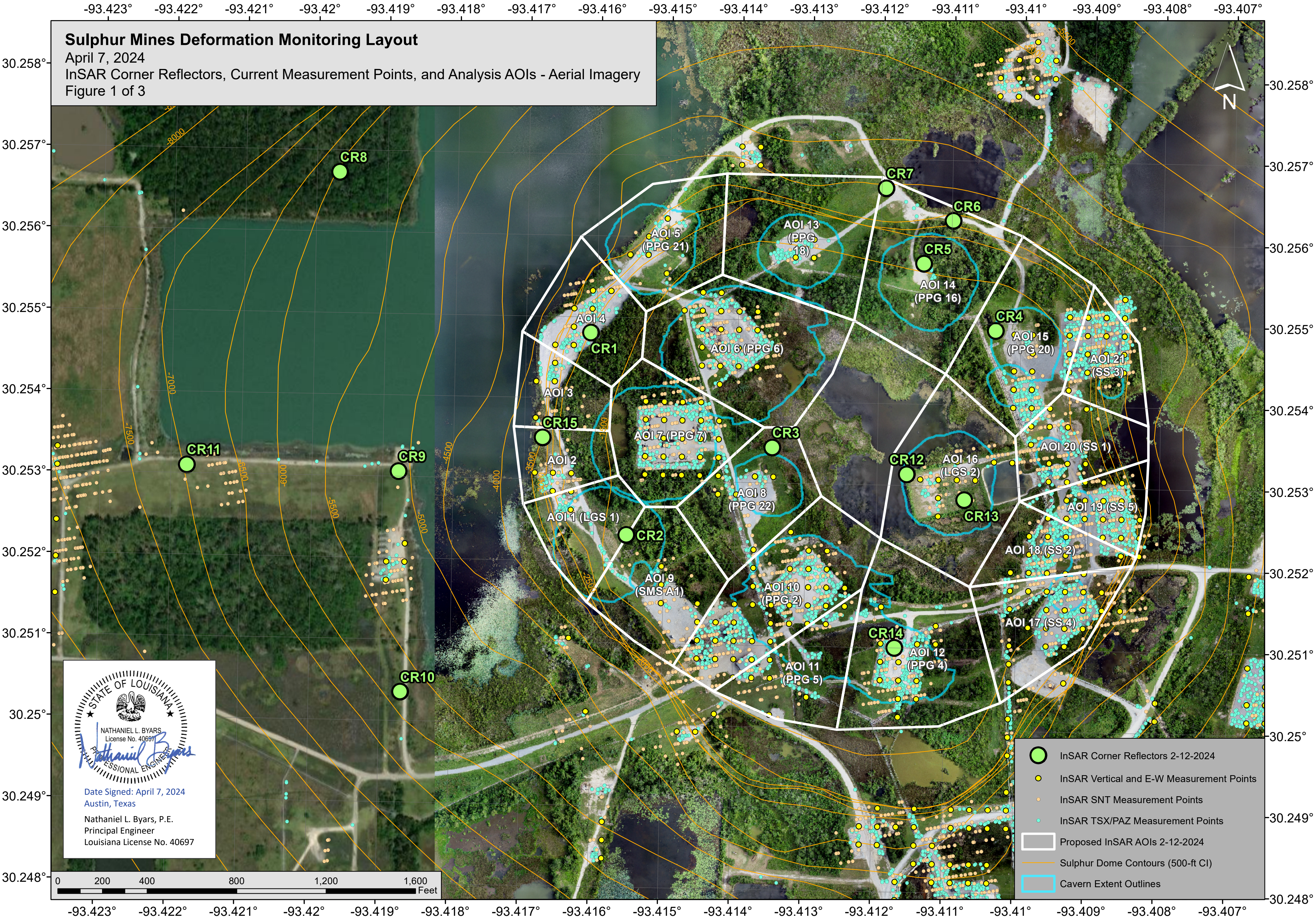


Sulphur Mines Deformation Monitoring Layout

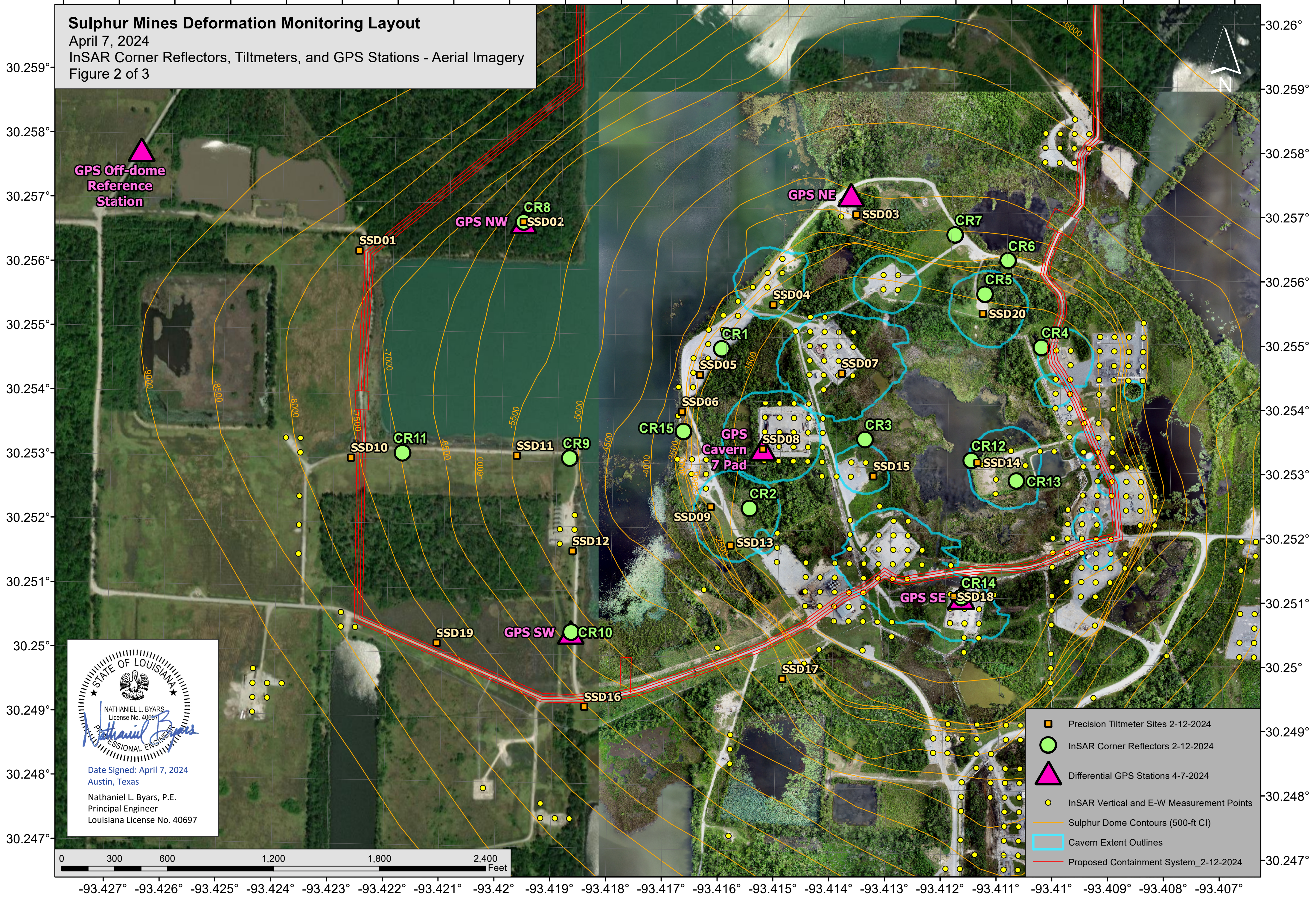
April 7, 2024
InSAR Corner Reflectors, Current Measurement Points, and Analysis AOIs - Aerial Imagery
Figure 1 of 3



- InSAR Corner Reflectors 2-12-2024
- InSAR Vertical and E-W Measurement Points
- InSAR SNT Measurement Points
- InSAR TSX/PAZ Measurement Points
- Proposed InSAR AOIs 2-12-2024
- Sulphur Dome Contours (500-ft CI)
- Cavern Extent Outlines

-93.428° -93.427° -93.426° -93.425° -93.424° -93.423° -93.422° -93.421° -93.42° -93.419° -93.418° -93.417° -93.416° -93.415° -93.414° -93.413° -93.412° -93.411° -93.41° -93.409° -93.408° -93.407°

Sulphur Mines Deformation Monitoring Layout
April 7, 2024
InSAR Corner Reflectors, Tiltmeters, and GPS Stations - Aerial Imagery
Figure 2 of 3



STATE OF LOUISIANA
NATHANIEL L. BYARS
License No. 40697
Professional Engineer
Date Signed: April 7, 2024
Austin, Texas
Nathaniel L. Byars, P.E.
Principal Engineer
Louisiana License No. 40697

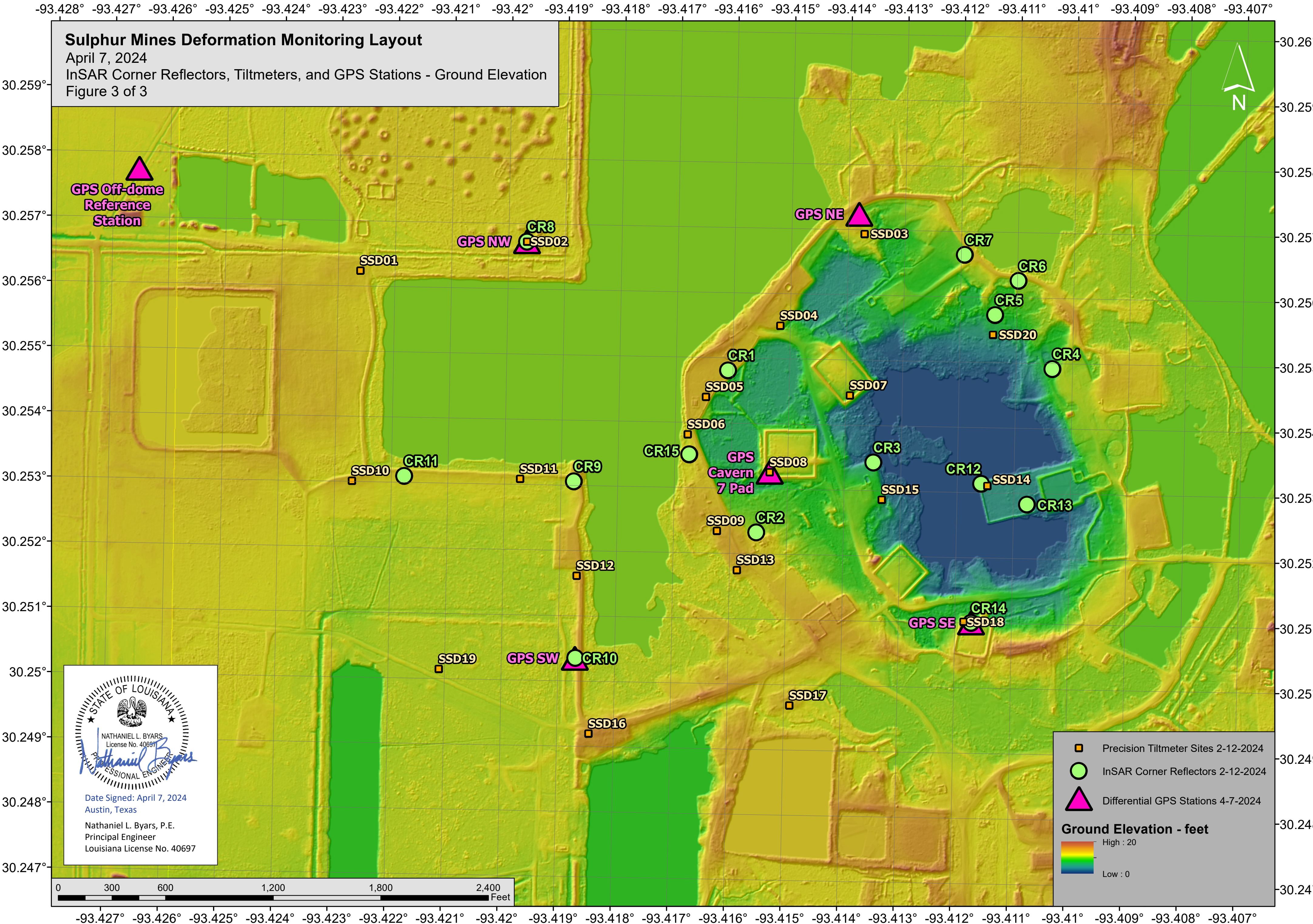
- Precision Tiltmeter Sites 2-12-2024
- InSAR Corner Reflectors 2-12-2024
- Differential GPS Stations 4-7-2024
- InSAR Vertical and E-W Measurement Points
- Sulphur Dome Contours (500-ft CI)
- Cavern Extent Outlines
- Proposed Containment System_2-12-2024

Sulphur Mines Deformation Monitoring Layout

April 7, 2024

InSAR Corner Reflectors, Tiltmeters, and GPS Stations - Ground Elevation

Figure 3 of 3



STATE OF LOUISIANA
NATHANIEL L. BYARS
License No. 40697
Nathaniel L. Byars
PROFESSIONAL ENGINEER
Date Signed: April 7, 2024
Austin, Texas
Nathaniel L. Byars, P.E.
Principal Engineer
Louisiana License No. 40697

Sulphur Mines Deformation Monitoring Layout

Coordinate Tables (WGS 84)

April 7, 2024

InSAR Corner Reflectors		
Name	Latitude	Longitude
CR1	30.254807	-93.416085
CR2	30.252330	-93.415535
CR3	30.253435	-93.413488
CR4	30.254918	-93.410354
CR5	30.255728	-93.411386
CR6	30.256259	-93.410980
CR7	30.256644	-93.411937
CR8	30.256725	-93.419677
CR9	30.253062	-93.418773
CR10	30.250354	-93.418694
CR11	30.253099	-93.421774
CR12	30.253136	-93.411577
CR13	30.252830	-93.410759
CR14	30.251001	-93.411711
CR15	30.253508	-93.416743

Precision Tiltmeter Sites		
Name	Latitude	Longitude
SSD01	30.256234	-93.422612
SSD02	30.256725	-93.419677
SSD03	30.256935	-93.413717
SSD04	30.255505	-93.415177
SSD05	30.254395	-93.416467
SSD06	30.253815	-93.416777
SSD07	30.254455	-93.413927
SSD08	30.253255	-93.415317
SSD09	30.252342	-93.416232
SSD10	30.253010	-93.422695
SSD11	30.253085	-93.419727
SSD12	30.251615	-93.418697
SSD13	30.251745	-93.415867
SSD14	30.253105	-93.411467
SSD15	30.252866	-93.413328
SSD16	30.249195	-93.418437
SSD17	30.249685	-93.414897
SSD18	30.251015	-93.411847
SSD19	30.250148	-93.421103
SSD20	30.255425	-93.411417

Differential GPS Stations		
Name	Latitude	Longitude
GPS NE	30.257237	-93.413814
GPS NW	30.256725	-93.419677
GPS Cavern 7 Pad	30.253255	-93.415317
GPS SE	30.251001	-93.411711
GPS SW	30.250349	-93.418699
GPS Off-dome Reference Station	30.257742	-93.426551



Date Signed: April 7, 2024
Austin, Texas

Nathaniel L. Byars, P.E.
Principal Engineer
Louisiana License No. 40697