

APPENDIX H
CONCENTRATION MAPS

Deponent
POOLER
Exh No. 10
Date 11/21/22
www.amersonwhite.com

August Levert_BP Plan_002007



Sample ID / Depth (feet)	Sample Date	Sampler	SAR	Oil & Grease	Total Barium	True Total Barium	TPH-DRO (C10-C28)	TPH-ORO (>C28)	VPH	C10-C12 Aliphatics	C10-C12 Aromatics	C12-C16 Aliphatics	C12-C16 Aromatics	C16-C21 Aromatics	C16-C35 Aliphatics	C21-C35 Aromatics
			N/A	%	mg/Kg	mg/Kg	mg/Kg	mg/Kg	mg/Kg	mg/Kg	mg/Kg	mg/Kg	mg/Kg	mg/Kg	mg/Kg	mg/Kg
HA-1 (0-2')	08/29/19	ICON	5.4	9.36	124	539	14000	16400	—	—	—	—	—	—	—	—
HA-1 (0-2')	08/29/19	HET	4.96	8.40	104	785	—	—	Below RECAP SS	<25.0	<25.0	54.4	60	159	449	875
HA-1 (2-4')	08/29/19	ICON	13.0	0.160	215	573	103	139	—	—	—	—	—	—	—	—
HA-1 (2-4')	08/29/19	HET	14.8	—	185	1170	—	—	Below RECAP SS	<25.0	<25.0	<25.0	<25.0	<25.0	<25.0	<25.0
HA-01R (2-4')	06/23/22	HET	9.32	—	—	—	—	—	—	—	—	—	—	—	—	—

Sample ID / Depth (feet)	Sample Date	Sampler	SAR	Oil & Grease	Total Barium	True Total Barium	VPH	EPH
			N/A	%	mg/Kg	mg/Kg	mg/Kg	mg/Kg
SB-23 (0-2')	06/23/22	HET	—	<0.10	—	—	Below RECAP SS	Below RECAP SS
SB-23 (0-2')	06/23/22	ICON	—	—	133	492	—	—

Sample ID / Depth (feet)	Sample Date	Sampler	SAR	Oil & Grease	Total Barium	True Total Barium	VPH	EPH
			N/A	%	mg/Kg	mg/Kg	mg/Kg	mg/Kg
LT-2 (0-4')	09/26/19	ICON	8.51	—	167	360	—	—
LT-2 (4-8')	09/26/19	ICON	11.1	—	158	365	—	—

Sample ID / Depth (feet)	Sample Date	Sampler	SAR	Oil & Grease	Total Barium	True Total Barium	TPH-DRO (C10-C28)	TPH-ORO (>C28)	VPH	EPH
			N/A	%	mg/Kg	mg/Kg	mg/Kg	mg/Kg	mg/Kg	mg/Kg
SB-17 (0-2')	06/23/22	HET	—	11.2	—	—	—	—	Below RECAP SS	Below RECAP SS
SB-17 (0-2')	06/23/22	ICON	—	2.20	—	—	5440	6290	—	—

Sample ID / Depth (feet)	Sample Date	Sampler	SAR	Oil & Grease	Total Barium	True Total Barium	VPH	EPH
			N/A	%	mg/Kg	mg/Kg	mg/Kg	mg/Kg
SB-24 (0-2')	06/23/22	HET	—	<0.10	—	—	Below RECAP SS	Below RECAP SS
SB-24 (0-2')	06/23/22	ICON	—	—	117	537	—	—

Sample ID / Depth (feet)	Sample Date	Sampler	SAR	Oil & Grease	Total Barium	True Total Barium	VPH	EPH
			N/A	%	mg/Kg	mg/Kg	mg/Kg	mg/Kg
SB-18 (0-2')	06/23/22	HET	—	2.05	—	—	Below RECAP SS	Below RECAP SS

Sample ID / Depth (feet)	Sample Date	Sampler	SAR	Oil & Grease	Total Barium	True Total Barium	VPH	EPH
			N/A	%	mg/Kg	mg/Kg	mg/Kg	mg/Kg
SB-21 (0-2')	06/23/22	HET	—	<0.10	—	—	Below RECAP SS	Below RECAP SS
SB-21 (0-2')	06/23/22	ICON	—	—	936	6910	—	—

Sample ID / Depth (feet)	Sample Date	Sampler	SAR	Oil & Grease	Total Barium	True Total Barium	VPH	EPH
			N/A	%	mg/Kg	mg/Kg	mg/Kg	mg/Kg
SB-22 (0-2')	06/23/22	HET	—	<0.10	—	—	Below RECAP SS	Below RECAP SS
SB-22 (0-2')	06/23/22	ICON	—	—	352	3150	—	—

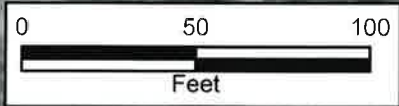
Sample ID / Depth (feet)	Sample Date	Sampler	SAR	Oil & Grease	Total Barium	True Total Barium	VPH	C12-C16 Aromatics	C16-C21 Aromatics	PAH
			N/A	%	mg/Kg	mg/Kg	mg/Kg	mg/Kg	mg/Kg	mg/Kg
SB-20 (0-2')	06/23/22	HET	—	2.92	—	—	Below RECAP SS	207	168	Below RECAP SS

Sample ID / Depth (feet)	Sample Date	Sampler	SAR	Oil & Grease	Total Barium	True Total Barium	VPH	EPH
			N/A	%	mg/Kg	mg/Kg	mg/Kg	mg/Kg
SB-19 (0-2')	06/23/22	HET	—	1.97	—	—	Below RECAP SS	Below RECAP SS

Explanation

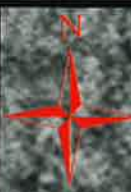
- ICON Boring Locations
- HET Boring Locations

TRW Drawn By	BTP Approved By	1009.A62 Project No.	11/03/2022 Date
-----------------	--------------------	-------------------------	--------------------



H-1. Soil concentration map of all constituents in exceedance of either 29-B Standards or RECAP Screening Standards near Limited Admission Area 2 on the Levert, August Levert, Jr., Family, LLC et al. property. Base Map: 1968 USGS Aerial

HYDRO-ENVIRONMENTAL TECHNOLOGY, INC.
 ENVIRONMENTAL CONSULTANTS
 620 Apollo Road
 Scott, LA 70583
 (337) 261-1963



Sample ID / Depth (feet)	Sample Date	Sampler	Oil & Grease %	TPH-DRO (C10-C28) mg/Kg	TPH-ORO (>C28) mg/Kg	VPH mg/Kg
SB-12 (0-2')	06/22/22	HET	<0.10	—	—	Below RECAP SS
SB-12 (0-2')	06/22/22	ICON	<0.05	29.2	85.3	—
SB-12 (2-4')	06/22/22	HET	0.24	—	—	Below RECAP SS
SB-12 (2-4')	06/22/22	ICON	0.21	4920	1440	—

Sample ID / Depth (feet)	Sample Date	Sampler	Oil & Grease %	TPH-DRO (C10-C28) mg/Kg	TPH-ORO (>C28) mg/Kg	VPH mg/Kg
SB-11 (0-2')	06/22/22	HET	0.2	—	—	Below RECAP SS
SB-11 (0-2')	06/22/22	ICON	<0.05	141	123	—
SB-11 (2-4')	06/22/22	HET	1.86	—	—	Below RECAP SS
SB-11 (2-4')	06/22/22	ICON	0.14	7870	4560	—
SB-11 (4-6')	07/28/22	HET	<0.10	—	—	—
SB-11 (6-8')	07/28/22	HET	<0.10	—	—	—

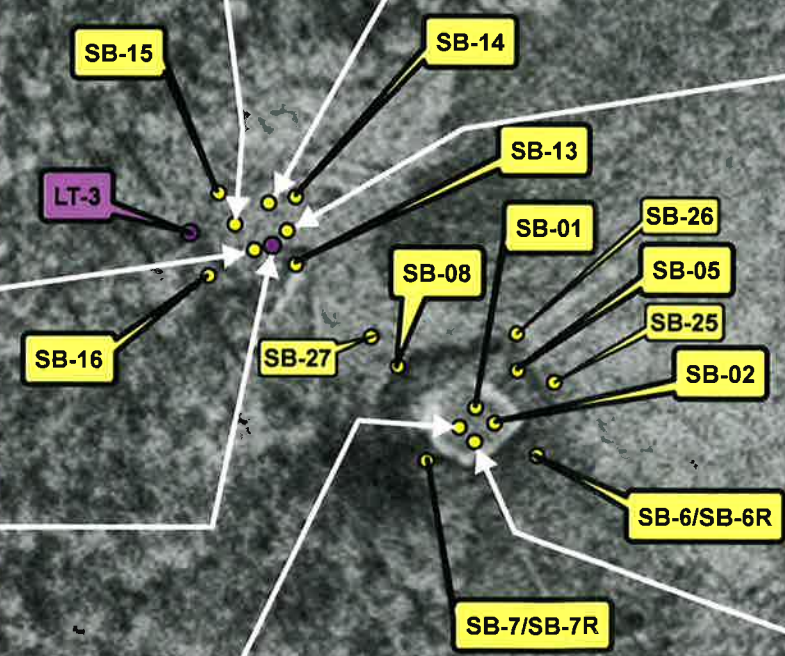
Sample ID / Depth (feet)	Sample Date	Sampler	Oil & Grease %	TPH-DRO (C10-C28) mg/Kg	TPH-ORO (>C28) mg/Kg	VPH mg/Kg
SB-10 (0-2')	06/22/22	HET	<0.10	—	—	Below RECAP SS
SB-10 (0-2')	06/22/22	ICON	—	142	157	—
SB-10 (2-4')	06/22/22	HET	3.64	—	—	Below RECAP SS
SB-10 (2-4')	06/22/22	ICON	—	4800	4800	—
SB-10 (4-6')	06/22/22	HET	0.31	—	—	Below RECAP SS
SB-10 (4-6')	06/22/22	ICON	—	149	149	—
SB-10 (6-8')	06/22/22	HET	0.57	—	—	Below RECAP SS

Sample ID / Depth (feet)	Sample Date	Sampler	Oil & Grease %	TPH-DRO (C10-C28) mg/Kg	TPH-ORO (>C28) mg/Kg	VPH mg/Kg
SB-09 (0-2')	06/22/22	HET	<0.10	—	—	Below RECAP SS
SB-09 (2-4')	06/22/22	HET	0.43	—	—	Below RECAP SS
SB-09 (2-4')	06/22/22	ICON	—	1210	632	—
SB-09 (4-6')	06/22/22	HET	0.45	—	—	Below RECAP SS
SB-09 (6-8')	06/22/22	HET	<0.10	—	—	Below RECAP SS

Sample ID / Depth (feet)	Sample Date	Sampler	Oil & Grease %	TPH-DRO (C10-C28) mg/Kg	TPH-ORO (>C28) mg/Kg	VPH mg/Kg
HA-2 (0-2')	08/29/19	ICON	12.40	13900	16600	—
HA-2 (0-2')	08/29/19	HET	1.20	—	—	Below RECAP SS
HA-2 (2-4')	08/29/19	ICON	2.13	1800	2330	—
HA-2 (2-4')	08/29/19	HET	0.20	—	—	Below RECAP SS

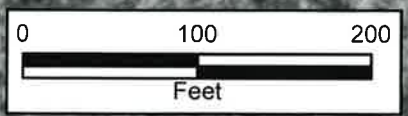
Sample ID / Depth (feet)	Sample Date	Sampler	Oil & Grease %	TPH-DRO (C10-C28) mg/Kg	TPH-ORO (>C28) mg/Kg	VPH mg/Kg	EPH mg/Kg
SB-03 (0-2')	06/21/22	HET	0.25	—	—	Below RECAP SS	Below RECAP SS
SB-03 (0-2')	06/21/22	ICON	—	1430	229	—	—
SB-03 (2-4')	06/21/22	HET	<0.10	—	—	Below RECAP SS	Below RECAP SS
SB-03 (2-4')	06/21/22	ICON	—	10.4	13.8	—	—

Sample ID / Depth (feet)	Sample Date	Sampler	Oil & Grease %	TPH-DRO (C10-C28) mg/Kg	TPH-ORO (>C28) mg/Kg	VPH mg/Kg	C12-C16 Aromatics mg/Kg	2-Methyl-naphthalene mg/Kg
SB-04 (0-2')	06/21/22	HET	<0.10	—	—	Below RECAP SS	208	4.01
SB-04 (0-2')	06/21/22	ICON	—	771	121	—	—	—
SB-04 (2-4')	06/21/22	HET	0.10	—	—	Below RECAP SS	<2.00	—
SB-04 (2-4')	06/21/22	ICON	—	1350	234	—	—	—
SB-04 (4-6')	06/21/22	HET	<0.10	—	—	Below RECAP SS	<2.00	—



Explanation

- HET Boring Locations
- ICON Boring Locations



H-2. Soil concentration map of hydrocarbon related constituents in exceedance of either 29-B Standards or RECAP Screening Standards near Limited Admission Area 3 on the Levert, August Levert, Jr., Family, LLC et al. property. Base Map: 1968 USGS Aerial

TRW Drawn By	BTP Approved By	1009.A62 Project No.	11/03/2022 Date
-----------------	--------------------	-------------------------	--------------------

HYDRO-ENVIRONMENTAL TECHNOLOGY, INC.
ENVIRONMENTAL CONSULTANTS
620 Apollo Road
Scott, LA 70583
(337) 261-1963

Sample ID /Depth (feet)	Sample Date	Sampler	Total Arsenic mg/Kg	Total Barium mg/Kg	True Total Barium mg/Kg	SPLP Barium mg/L	Total Cadmium mg/Kg	Chromium (Total/SPLP) mg/Kg / mg/L	Lead (Total/SPLP) mg/Kg / mg/L	Total Zinc mg/Kg
SB-12 (0-2')	06/22/22	HET	2.06	564	7510	—	0.319	10.8	13	50.9
SB-12 (0-2')	06/22/22	ICON	1.83	462	6510	—	0.289	7.63	7.93	37
SB-12 (2-4')	06/22/22	HET	23.3	336	307000	5.12	5.22	401 / 0.148	465 / 0.16	935
SB-12 (2-4')	06/22/22	ICON	47.3	1135	323000	—	9.96	133	818	1606

Sample ID /Depth (feet)	Sample Date	Sampler	Total Arsenic mg/Kg	SPLP Arsenic mg/L	Total Barium mg/Kg	True Total Barium mg/Kg	SPLP Barium mg/L	Total Cadmium mg/Kg / mg/L	Chromium (Total/SPLP) mg/Kg / mg/L	Lead (Total/SPLP) mg/Kg / mg/L	Total Zinc mg/Kg
SB-11 (0-2')	06/22/22	HET	2.48	—	120	14000	—	0.44	46.5	25	62.3
SB-11 (0-2')	06/22/22	ICON	3.23	—	1425	102000	—	0.629	74.7	46.5	104
SB-11 (2-4')	06/22/22	HET	16.7	<0.0277	174	239000	22	4.28	286 / 0.485	387 / 0.493	733
SB-11 (2-4')	06/22/22	ICON	16.7	—	1140	320000	—	5.02	183	435	777
SB-11 (4-8')	07/28/22	HET	2.72	—	125	463	—	0.299	15.9	8.9	45
SB-11 (8-8')	07/28/22	HET	2.89	—	120	491	—	0.249	14.8	8.73	43

Sample ID / Depth (feet)	Sample Date	Sampler	Total Barium mg/Kg	True Total Barium mg/Kg	Chromium (Total/SPLP) mg/Kg / mg/L	Lead (Total/SPLP) mg/Kg / mg/L
SB-09 (0-2')	06/22/22	HET	204	2130	7.36	7.76
SB-09 (2-4')	06/22/22	HET	325	84300	107	123
SB-9 (2-4')	06/22/22	ICON	2156	160000	—	—
SB-09 (4-8')	06/22/22	HET	66.7	1490	6.91	5.27
SB-09 (8-8')	06/22/22	HET	113	1600	6.68	7.24

Sample ID /Depth (feet)	Sample Date	Sampler	Total Barium mg/Kg	True Total Barium mg/Kg
SB-14 (0-2')	06/23/22	HET	175	<500
SB-14 (0-2')	06/23/22	ICON	150	4050
SB-14 (2-4')	06/23/22	HET	170	616
SB-14 (2-4')	06/23/22	ICON	588	6640
SB-14 (4-8')	06/23/22	HET	144	518
SB-14 (4-8')	06/23/22	HET	139	<500
SB-14 (8-8')	06/23/22	ICON	248	3360

Sample ID /Depth (feet)	Sample Date	Sampler	Total Barium mg/Kg	True Total Barium mg/Kg	Chromium (Total/SPLP) mg/Kg / mg/L	Lead (Total/SPLP) mg/Kg / mg/L
SB-10 (0-2')	06/22/22	HET	53.4	5750	10.8	10.1
SB-10 (0-2')	06/22/22	ICON	1355	21600	—	—
SB-10 (2-4')	06/22/22	HET	411	200000	155	192
SB-10 (2-4')	06/22/22	ICON	1299	64500	—	—
SB-10 (4-8')	06/22/22	HET	160	2900	5.67	6.74
SB-10 (4-8')	06/22/22	ICON	235	2620	—	—
SB-10 (8-8')	06/22/22	HET	58.7	1030	5.15	4.31

Sample ID /Depth (feet)	Sample Date	Sampler	Total Barium mg/Kg	True Total Barium mg/Kg
SB-16 (0-2')	06/23/22	HET	132	589
SB-16 (0-2')	06/23/22	ICON	608	4950
SB-16 (2-4')	06/23/22	HET	151	570
SB-16 (2-4')	06/23/22	ICON	221	723
SB-16 (4-8')	06/23/22	HET	135	<500
SB-16 (8-8')	06/23/22	HET	147	<500
SB-16 (8-8')	06/23/22	ICON	234	1170

Sample ID /Depth (feet)	Sample Date	Sampler	Total Barium mg/Kg	True Total Barium mg/Kg
SB-13 (0-2')	06/22/22	HET	866	9640
SB-13 (0-2')	06/22/22	ICON	235	3960
SB-13 (2-4')	06/22/22	HET	315	2840
SB-13 (2-4')	06/22/22	ICON	122	1300
SB-13 (4-8')	06/22/22	HET	157	810
SB-13 (8-8')	06/22/22	HET	233	795

Sample ID /Depth (feet)	Sample Date	Sampler	Total Arsenic mg/Kg	Total Barium mg/Kg	True Total Barium mg/Kg	SPLP Barium mg/L	Total Cadmium mg/Kg	Chromium (Total/SPLP) mg/Kg / mg/L	Lead (Total/SPLP) mg/Kg / mg/L	Total Zinc mg/Kg	
HA-2 (0-2')	08/29/19	ICON	13.4	—	2084	265000	—	4.32	250	406	775
HA-2 (0-2')	08/29/19	HET	<5.0	<0.10	5120	25700	2.7	<2.5	38 / <0.10	49.1 / <0.10	99.2
HA-2 (2-4')	08/29/19	ICON	3.91	—	531	3900	—	0.382	10.2	10.6	34.8
HA-2 (2-4')	08/29/19	HET	<5.0	—	560	1920	—	<2.5	15.3	13.9	51.9

Sample ID /Depth (feet)	Sample Date	Sampler	Total Barium mg/Kg	True Total Barium mg/Kg	Chromium (Total/SPLP) mg/Kg / mg/L
SB-05 (2-4')	06/21/22	HET	276	219	20.7
SB-05 (2-4')	06/21/22	HET	1830	90100	121
SB-5 (2-4')	06/21/22	ICON	2970	118000	—
SB-05 (4-8')	06/21/22	HET	1330	6060	20.2
SB-5 (4-8')	06/21/22	ICON	1692	16900	—
SB-05R (8-8')	09/27/22	HET	544	—	—

Sample ID / Depth (feet)	Sample Date	Sampler	Total Barium mg/Kg	True Total Barium mg/Kg
SB-08 (0-2')	06/21/22	HET	157	4750 (Waypoint) 415 / 253 (SGS)
SB-8 (0-2')	06/21/22	ICON	902	42200
SB-08 (2-4')	06/21/22	HET	140	<500
SB-8 (2-4')	06/21/22	ICON	162	1390

Sample ID / Depth (feet)	Sample Date	Sampler	Total Barium mg/Kg	True Total Barium mg/Kg	Chromium (Total/SPLP) mg/Kg / mg/L
SB-01 (0-2')	06/21/22	HET	1380	25800	176
SB-1 (0-2')	06/21/22	ICON	1793	51900	—
SB-01 (2-4')	06/21/22	HET	743	9570	30.3
SB-1 (2-4')	06/21/22	ICON	1451	33700	—

Sample ID /Depth (feet)	Sample Date	Sampler	Total Barium mg/Kg	True Total Barium mg/Kg
SB-02 (0-2')	06/21/22	HET	789	64400
SB-02 (2-4')	06/21/22	HET	1780	17900

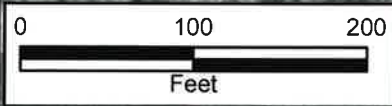
Sample ID /Depth (feet)	Sample Date	Sampler	Total Arsenic mg/Kg	Total Barium mg/Kg	SPLP Barium mg/L	True Total Barium mg/Kg	Chromium (Total/SPLP) mg/Kg / mg/L	Lead (Total/SPLP) mg/Kg / mg/L
SB-03 (0-2')	06/21/22	HET	7.47	442	5.06	207000	517 / 0.0522	186 / 0.0202
SB-3 (0-2')	06/21/22	ICON	7.96	2990	—	412000	319	200
SB-03 (2-4')	06/21/22	HET	2.02	1250	—	8300	17.1	12.1
SB-3 (2-4')	06/21/22	ICON	2.03	700	—	12100	11.2	9.34

Sample ID /Depth (feet)	Sample Date	Sampler	Total Arsenic mg/Kg	SPLP Arsenic mg/L	Total Barium mg/Kg	True Total Barium mg/Kg	SPLP Barium mg/L	Chromium (Total/SPLP) mg/Kg / mg/L	Lead (Total/SPLP) mg/Kg / mg/L
SB-04 (0-2')	06/21/22	HET	11.8	<0.0277	276	301000	3.63	413 / 0.118	209 / 0.086
SB-4 (0-2')	06/21/22	ICON	10.2	—	3236	439000	—	168	203
SB-04 (2-4')	06/21/22	HET	5.65	—	2470	43900	7.1	21.4	21.3
SB-4 (2-4')	06/21/22	ICON	6.45	—	2588	434000	—	48.3	105
SB-04 (4-8')	06/21/22	HET	<2.00	—	469	5370	—	10.4	10.1

Sample ID / Depth (feet)	Sample Date	Sampler	Total Barium mg/Kg	True Total Barium mg/Kg
SB-06R (0-2')	09/27/22	HET	117	394
SB-06 (2-4')	06/21/22	HET	154	772
SB-6 (2-4')	06/21/22	ICON	511	3770
SB-06 (4-6')	06/21/22	HET	173	566
SB-6 (4-6')	06/21/22	ICON	461	5430

Explanation

- HET Boring Locations
- ICON Boring Locations

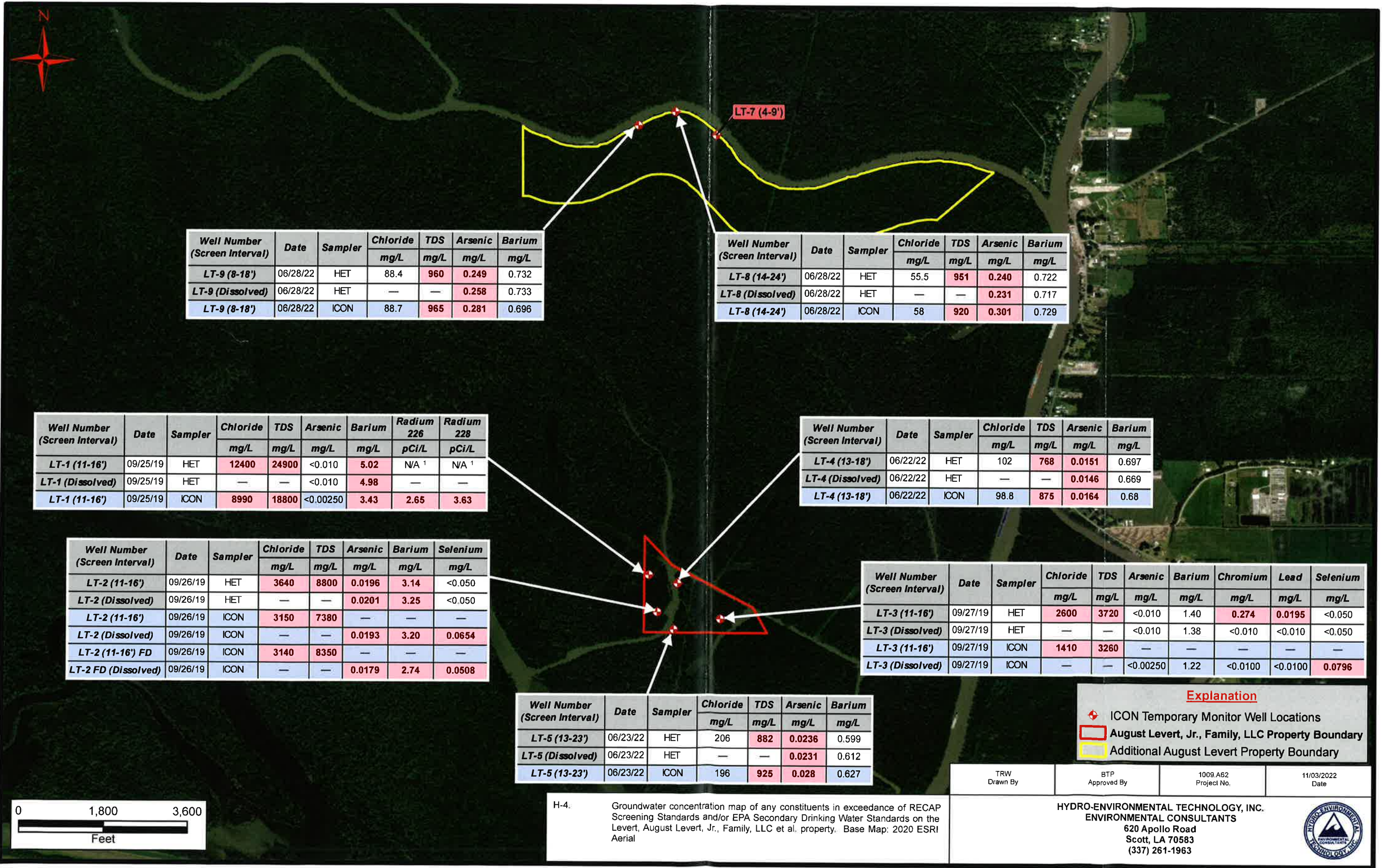


H-3. Soil concentration map of any metal constituents in exceedance of either 29-B Standards or RECAP Screening Standards near the Limited Admission Area 3 on the Levert, August Levert, Jr., Family, LLC et al. property. Base Map: 1968 USGS Aerial

TRW Drawn By	BTP Approved By	1009.A62 Project No.	11/03/2022 Date
-----------------	--------------------	-------------------------	--------------------

HYDRO-ENVIRONMENTAL TECHNOLOGY, INC.
ENVIRONMENTAL CONSULTANTS
620 Apollo Road
Scott, LA 70583
(337) 261-1963





Well Number (Screen Interval)	Date	Sampler	Chloride mg/L	TDS mg/L	Arsenic mg/L	Barium mg/L
LT-9 (8-18')	06/28/22	HET	88.4	960	0.249	0.732
LT-9 (Dissolved)	06/28/22	HET	—	—	0.258	0.733
LT-9 (8-18')	06/28/22	ICON	88.7	965	0.281	0.696

Well Number (Screen Interval)	Date	Sampler	Chloride mg/L	TDS mg/L	Arsenic mg/L	Barium mg/L
LT-8 (14-24')	06/28/22	HET	55.5	951	0.240	0.722
LT-8 (Dissolved)	06/28/22	HET	—	—	0.231	0.717
LT-8 (14-24')	06/28/22	ICON	58	920	0.301	0.729

Well Number (Screen Interval)	Date	Sampler	Chloride mg/L	TDS mg/L	Arsenic mg/L	Barium mg/L	Radium 226 pCi/L	Radium 228 pCi/L
LT-1 (11-16')	09/25/19	HET	12400	24900	<0.010	5.02	N/A ¹	N/A ¹
LT-1 (Dissolved)	09/25/19	HET	—	—	<0.010	4.98	—	—
LT-1 (11-16')	09/25/19	ICON	8990	18800	<0.00250	3.43	2.65	3.63

Well Number (Screen Interval)	Date	Sampler	Chloride mg/L	TDS mg/L	Arsenic mg/L	Barium mg/L
LT-4 (13-18')	06/22/22	HET	102	768	0.0151	0.697
LT-4 (Dissolved)	06/22/22	HET	—	—	0.0146	0.669
LT-4 (13-18')	06/22/22	ICON	98.8	875	0.0164	0.68

Well Number (Screen Interval)	Date	Sampler	Chloride mg/L	TDS mg/L	Arsenic mg/L	Barium mg/L	Selenium mg/L
LT-2 (11-16')	09/26/19	HET	3640	8800	0.0196	3.14	<0.050
LT-2 (Dissolved)	09/26/19	HET	—	—	0.0201	3.25	<0.050
LT-2 (11-16')	09/26/19	ICON	3150	7380	—	—	—
LT-2 (Dissolved)	09/26/19	ICON	—	—	0.0193	3.20	0.0654
LT-2 (11-16') FD	09/26/19	ICON	3140	8350	—	—	—
LT-2 FD (Dissolved)	09/26/19	ICON	—	—	0.0179	2.74	0.0508

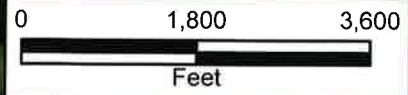
Well Number (Screen Interval)	Date	Sampler	Chloride mg/L	TDS mg/L	Arsenic mg/L	Barium mg/L	Chromium mg/L	Lead mg/L	Selenium mg/L
LT-3 (11-16')	09/27/19	HET	2600	3720	<0.010	1.40	0.274	0.0195	<0.050
LT-3 (Dissolved)	09/27/19	HET	—	—	<0.010	1.38	<0.010	<0.010	<0.050
LT-3 (11-16')	09/27/19	ICON	1410	3260	—	—	—	—	—
LT-3 (Dissolved)	09/27/19	ICON	—	—	<0.00250	1.22	<0.0100	<0.0100	0.0796

Well Number (Screen Interval)	Date	Sampler	Chloride mg/L	TDS mg/L	Arsenic mg/L	Barium mg/L
LT-5 (13-23')	06/23/22	HET	206	882	0.0236	0.599
LT-5 (Dissolved)	06/23/22	HET	—	—	0.0231	0.612
LT-5 (13-23')	06/23/22	ICON	196	925	0.028	0.627

Explanation

- ICON Temporary Monitor Well Locations
- August Levert, Jr., Family, LLC Property Boundary
- Additional August Levert Property Boundary

TRW Drawn By	BTP Approved By	1009 A62 Project No.	11/03/2022 Date
--------------	-----------------	----------------------	-----------------



H-4. Groundwater concentration map of any constituents in exceedance of RECAP Screening Standards and/or EPA Secondary Drinking Water Standards on the Levert, August Levert, Jr., Family, LLC et al. property. Base Map: 2020 ESRI Aerial

HYDRO-ENVIRONMENTAL TECHNOLOGY, INC.
 ENVIRONMENTAL CONSULTANTS
 620 Apollo Road
 Scott, LA 70583
 (337) 261-1963