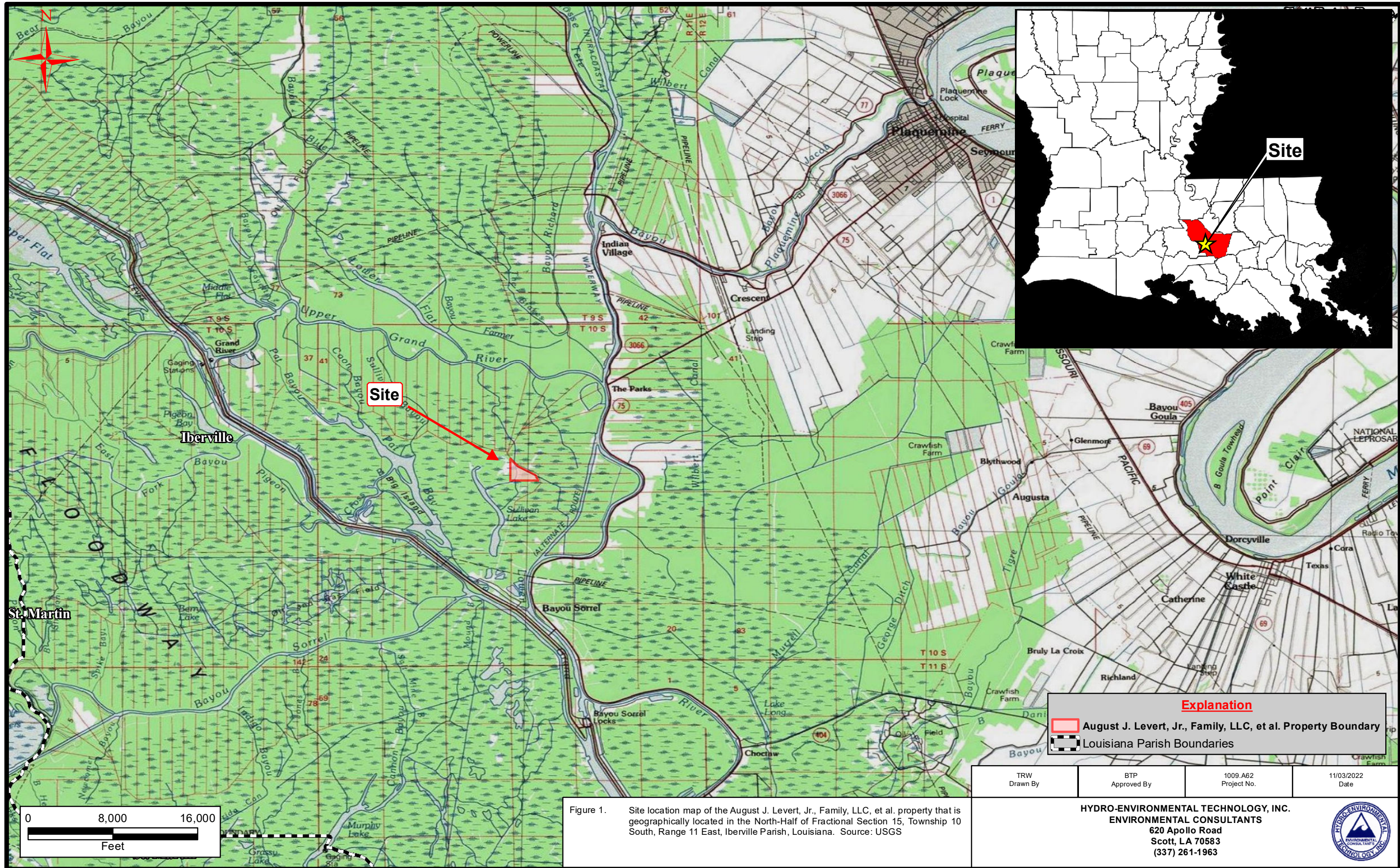


APPENDIX B
FIGURES





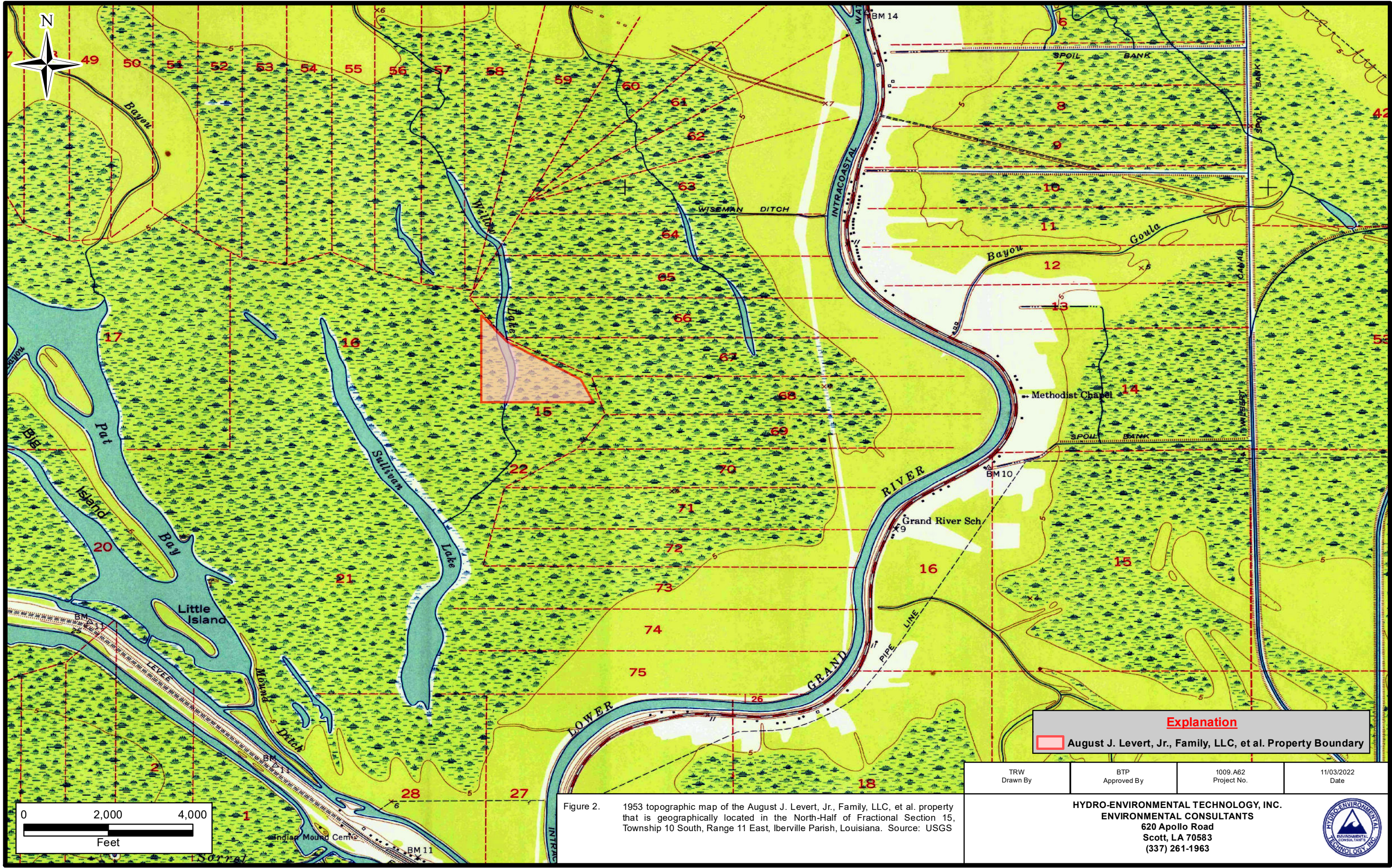


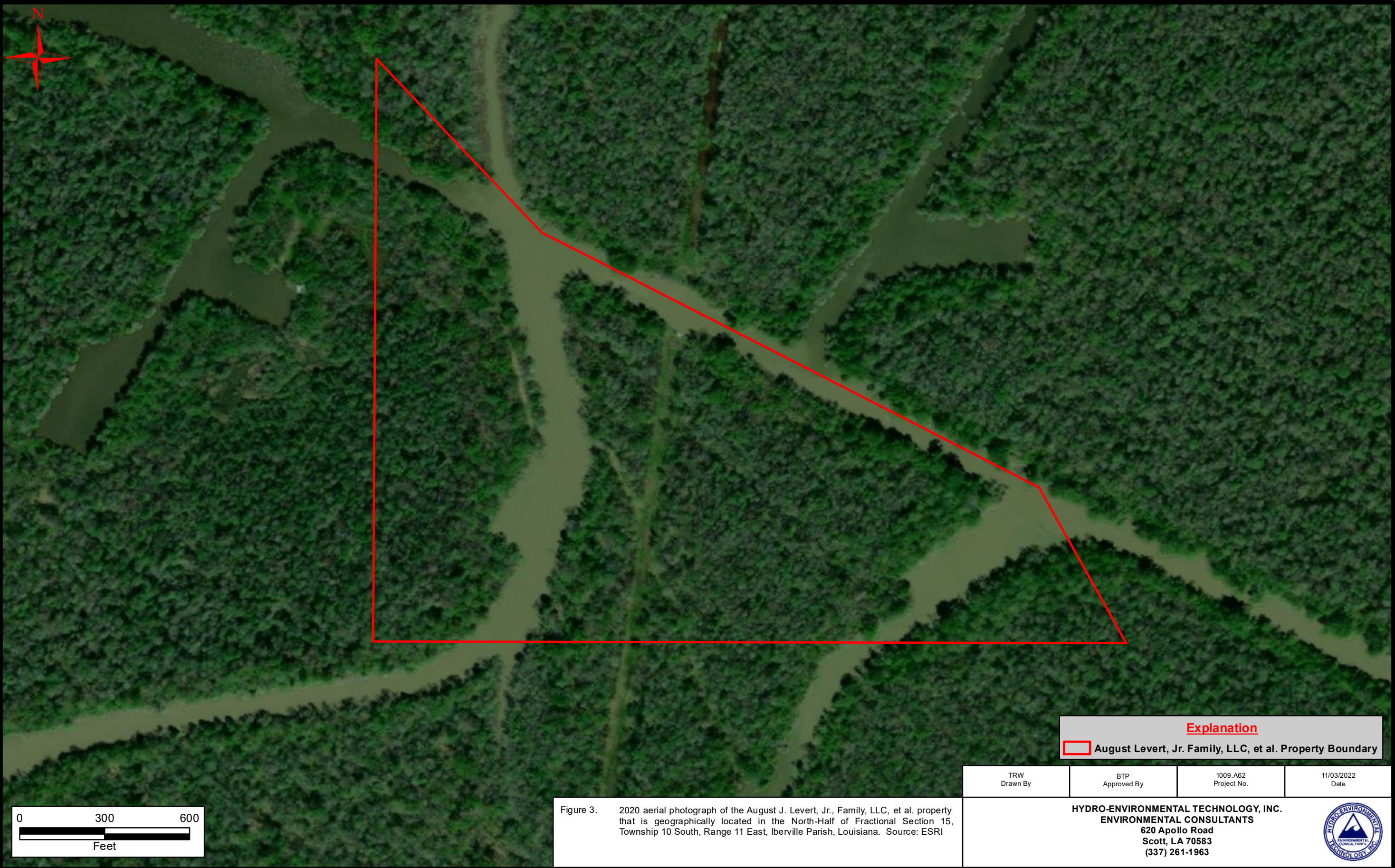
Figure 2. 1953 topographic map of the August J. Levert, Jr., Family, LLC, et al. property that is geographically located in the North-Half of Fractional Section 15, Township 10 South, Range 11 East, Iberville Parish, Louisiana. Source: USGS

Explanation			
	August J. Levert, Jr., Family, LLC, et al. Property Boundary		

TRW Drawn By	BTP Approved By	1009.A62 Project No.	11/03/2022 Date
-----------------	--------------------	-------------------------	--------------------

HYDRO-ENVIRONMENTAL TECHNOLOGY, INC.
 ENVIRONMENTAL CONSULTANTS
 620 Apollo Road
 Scott, LA 70583
 (337) 261-1963





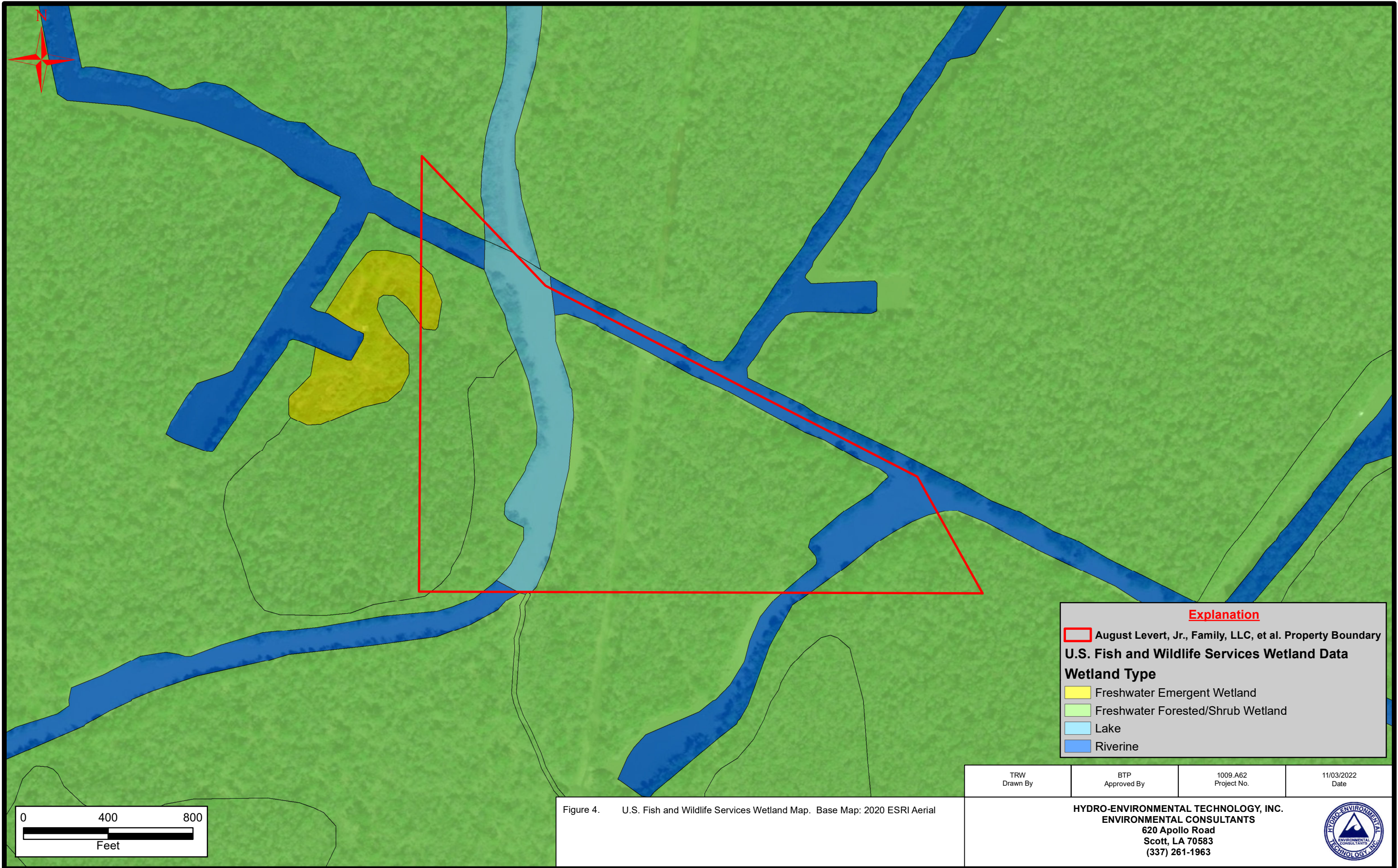
Explanation
 August Levert, Jr. Family, LLC, et al. Property Boundary

TRW Drawn By	BTP Approved By	1009_A62 Project No.	11/03/2022 Date
-----------------	--------------------	-------------------------	--------------------

Figure 3. 2020 aerial photograph of the August J. Levert, Jr., Family, LLC, et al. property that is geographically located in the North-Half of Fractional Section 15, Township 10 South, Range 11 East, Iberville Parish, Louisiana. Source: ESRI

HYDRO-ENVIRONMENTAL TECHNOLOGY, INC.
ENVIRONMENTAL CONSULTANTS
 620 Apollo Road
 Scott, LA 70583
 (337) 261-1963





Explanation

August Levert, Jr., Family, LLC, et al. Property Boundary

U.S. Fish and Wildlife Services Wetland Data

Wetland Type

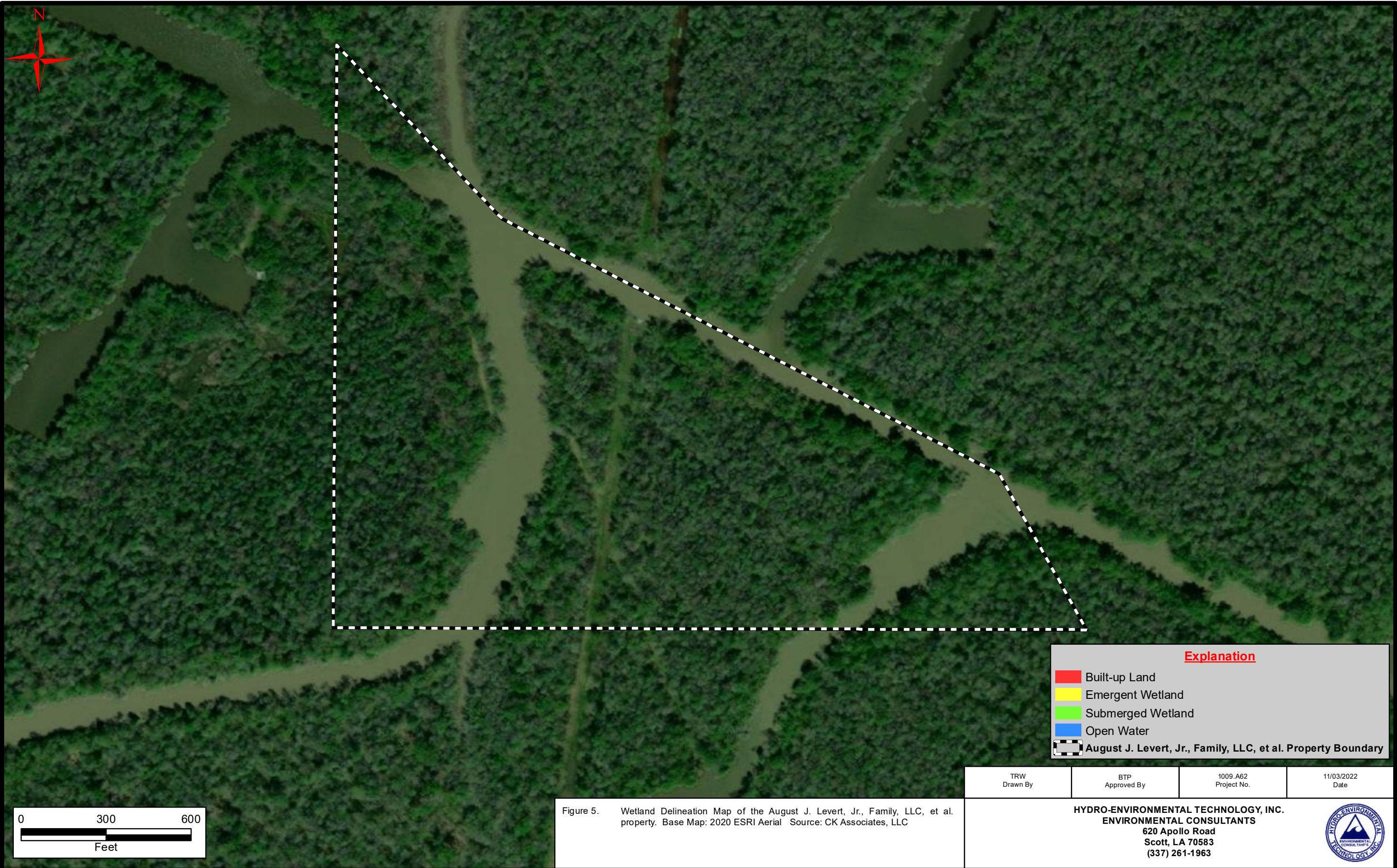
- Freshwater Emergent Wetland
- Freshwater Forested/Shrub Wetland
- Lake
- Riverine

TRW Drawn By	BTP Approved By	1009.A62 Project No.	11/03/2022 Date
-----------------	--------------------	-------------------------	--------------------

Figure 4. U.S. Fish and Wildlife Services Wetland Map. Base Map: 2020 ESRI Aerial

HYDRO-ENVIRONMENTAL TECHNOLOGY, INC.
ENVIRONMENTAL CONSULTANTS
 620 Apollo Road
 Scott, LA 70583
 (337) 261-1963





Explanation

- Built-up Land
- Emergent Wetland
- Submerged Wetland
- Open Water
- August J. Levert, Jr., Family, LLC, et al. Property Boundary

TRW Drawn By	BTP Approved By	1009_A62 Project No.	11/03/2022 Date
-----------------	--------------------	-------------------------	--------------------

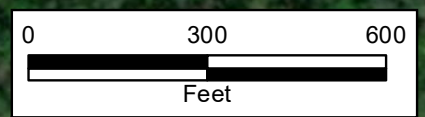


Figure 5. Wetland Delineation Map of the August J. Levert, Jr., Family, LLC, et al. property. Base Map: 2020 ESRI Aerial Source: CK Associates, LLC

HYDRO-ENVIRONMENTAL TECHNOLOGY, INC.
ENVIRONMENTAL CONSULTANTS
 620 Apollo Road
 Scott, LA 70583
 (337) 261-1963

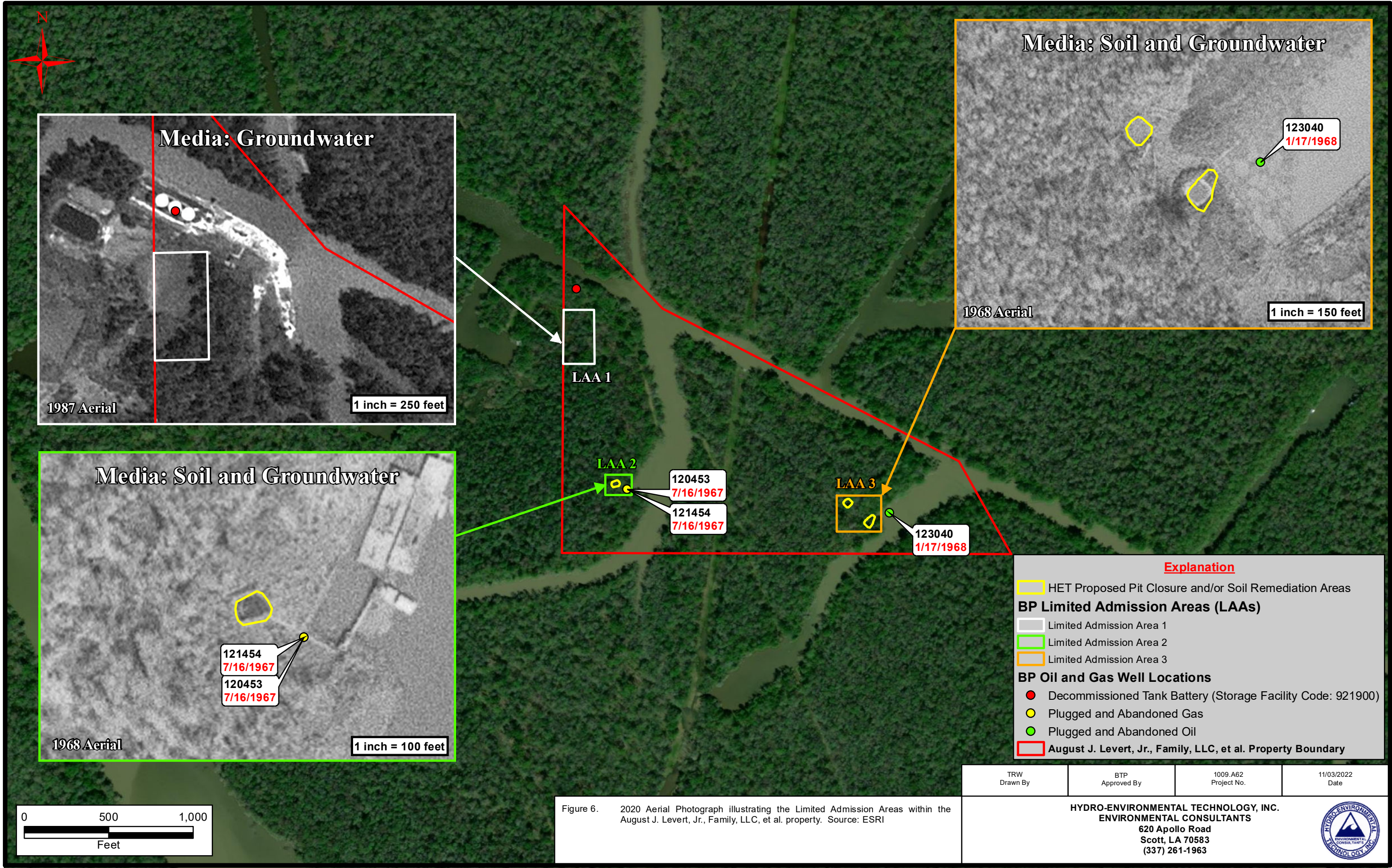


Figure 6. 2020 Aerial Photograph illustrating the Limited Admission Areas within the August J. Levert, Jr., Family, LLC, et al. property. Source: ESRI

TRW Drawn By	BTP Approved By	1009.A62 Project No.	11/03/2022 Date
-----------------	--------------------	-------------------------	--------------------

HYDRO-ENVIRONMENTAL TECHNOLOGY, INC.
ENVIRONMENTAL CONSULTANTS
 620 Apollo Road
 Scott, LA 70583
 (337) 261-1963



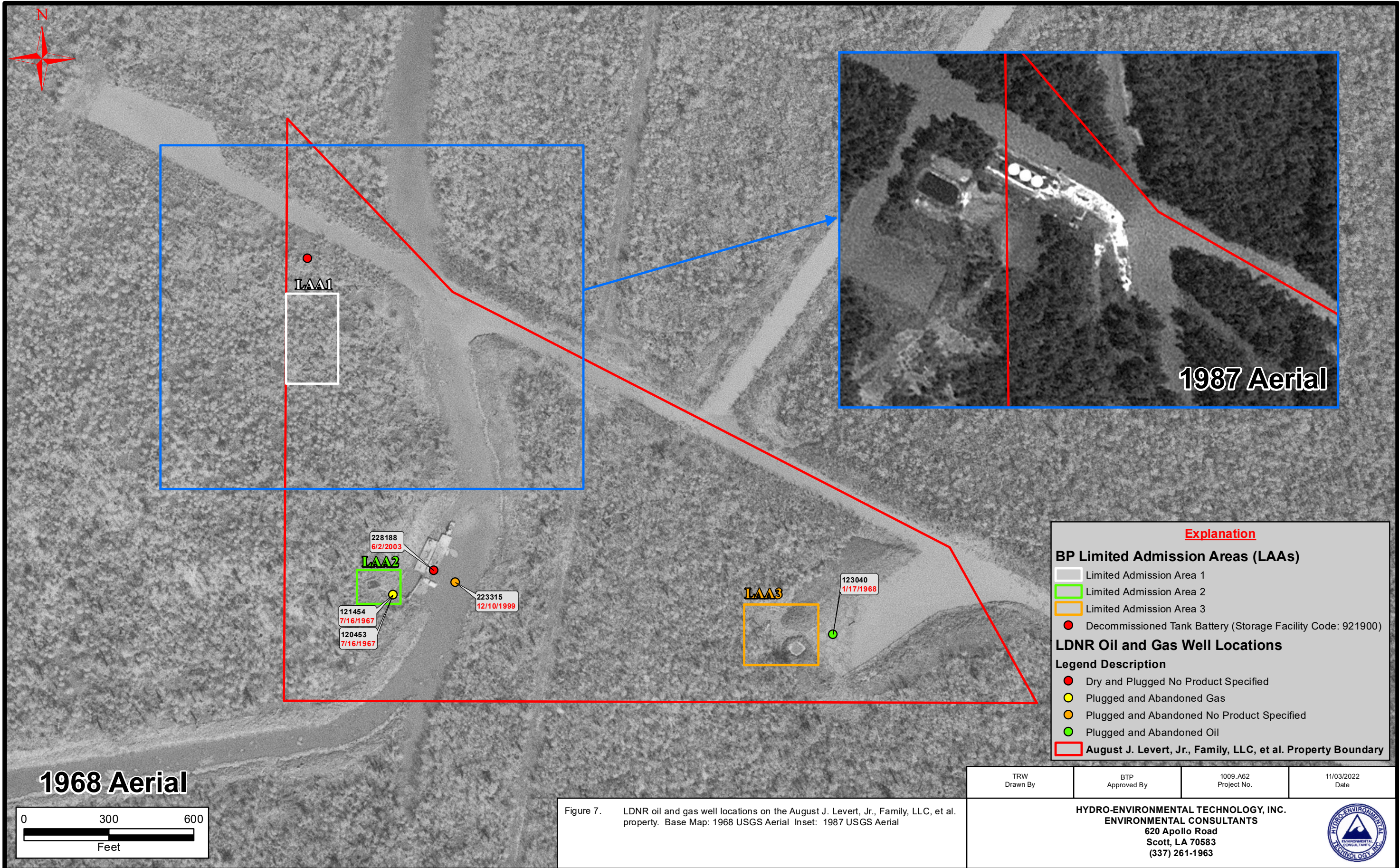


Figure 7. LDNR oil and gas well locations on the August J. Levert, Jr., Family, LLC, et al. property. Base Map: 1968 USGS Aerial Inset: 1987 USGS Aerial

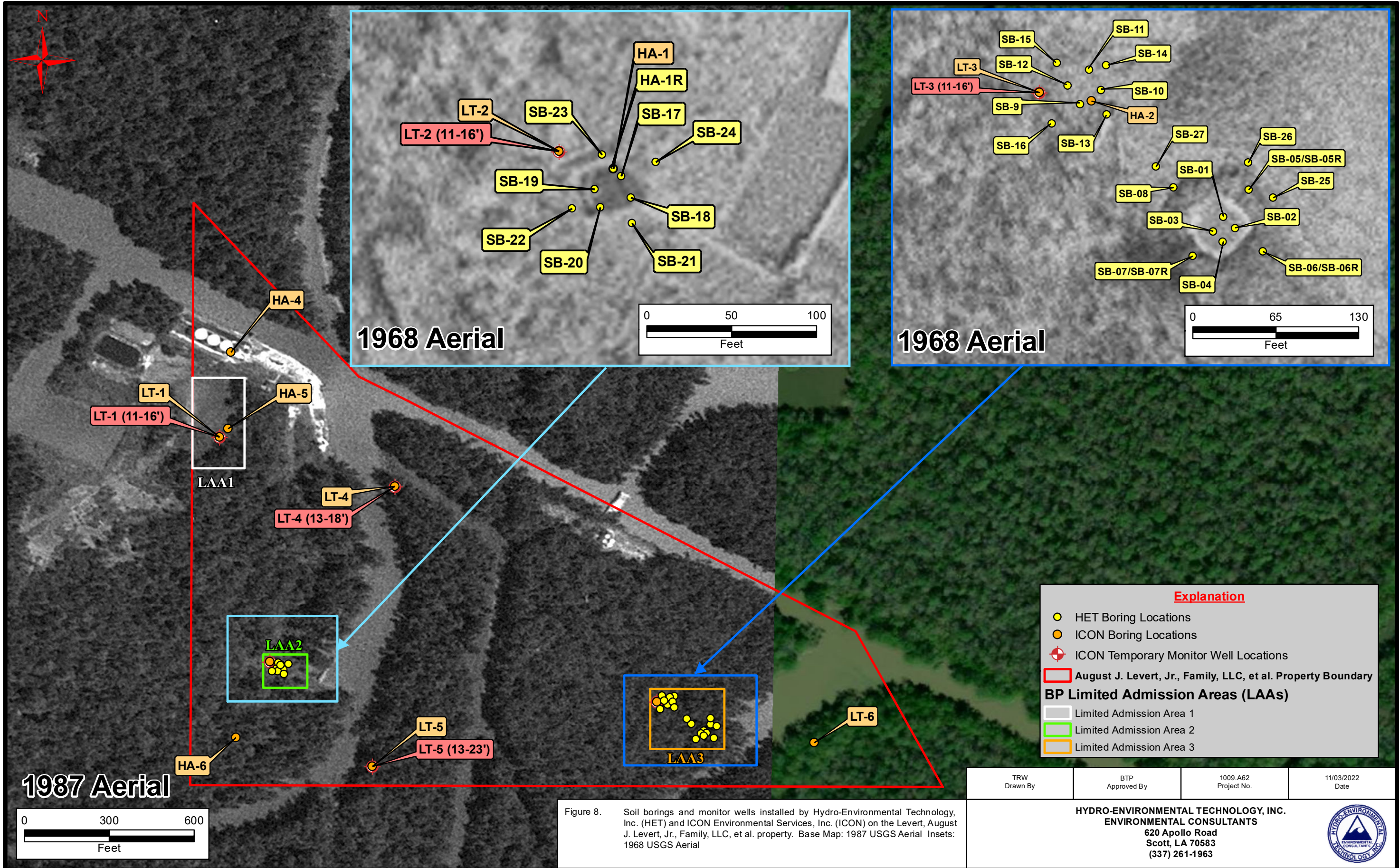


Figure 8. Soil borings and monitor wells installed by Hydro-Environmental Technology, Inc. (HET) and ICON Environmental Services, Inc. (ICON) on the Levert, August J. Levert, Jr., Family, LLC, et al. property. Base Map: 1987 USGS Aerial Insets: 1968 USGS Aerial

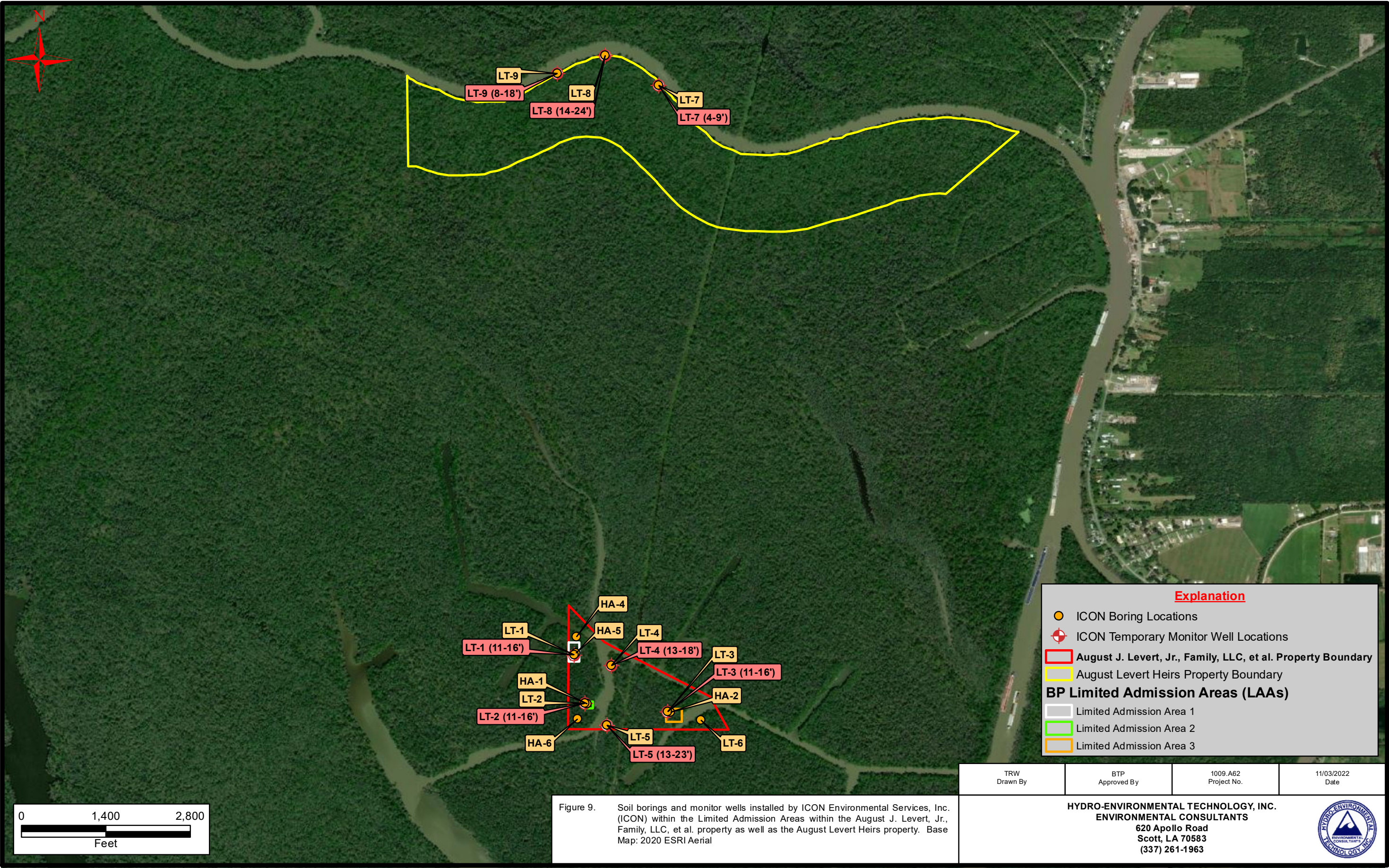
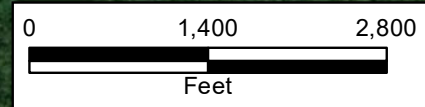


Figure 9. Soil borings and monitor wells installed by ICON Environmental Services, Inc. (ICON) within the Limited Admission Areas within the August J. Levert, Jr., Family, LLC, et al. property as well as the August Levert Heirs property. Base Map: 2020 ESRI Aerial

Explanation

- ICON Boring Locations
- ⊕ ICON Temporary Monitor Well Locations
- ▭ August J. Levert, Jr., Family, LLC, et al. Property Boundary
- ▭ August Levert Heirs Property Boundary
- BP Limited Admission Areas (LAAs)**
- ▭ Limited Admission Area 1
- ▭ Limited Admission Area 2
- ▭ Limited Admission Area 3



TRW Drawn By	BTP Approved By	1009.A62 Project No.	11/03/2022 Date
-----------------	--------------------	-------------------------	--------------------

HYDRO-ENVIRONMENTAL TECHNOLOGY, INC.
ENVIRONMENTAL CONSULTANTS
 620 Apollo Road
 Scott, LA 70583
 (337) 261-1963



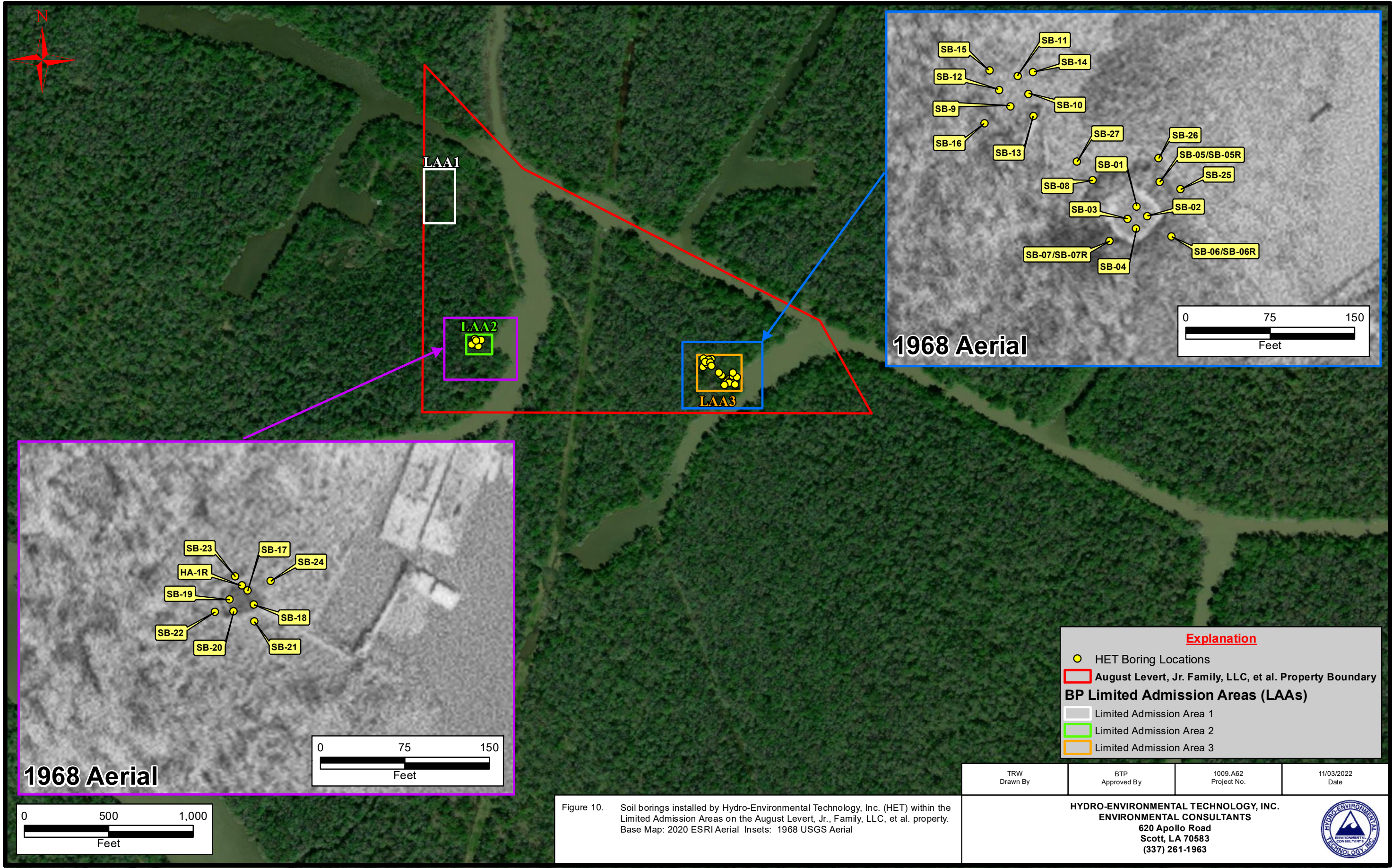
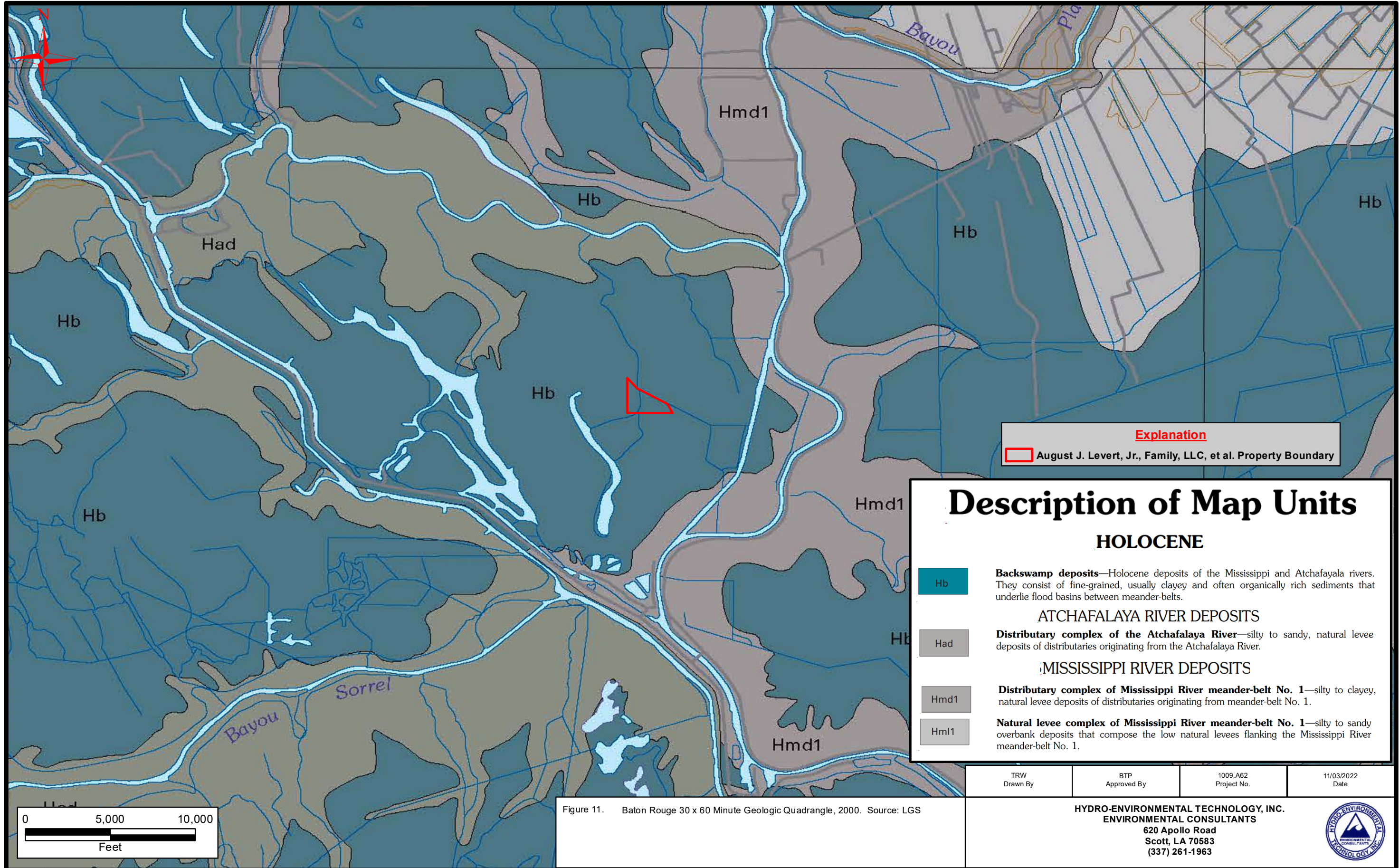


Figure 10. Soil borings installed by Hydro-Environmental Technology, Inc. (HET) within the Limited Admission Areas on the August Levert, Jr., Family, LLC, et al. property. Base Map: 2020 ESRI Aerial Insets: 1968 USGS Aerial



Explanation
 August J. Levert, Jr., Family, LLC, et al. Property Boundary

Description of Map Units

HOLOCENE

- Hb**
Backswamp deposits—Holocene deposits of the Mississippi and Atchafalaya rivers. They consist of fine-grained, usually clayey and often organically rich sediments that underlie flood basins between meander-belts.
- Had**
Distributary complex of the Atchafalaya River—silty to sandy, natural levee deposits of distributaries originating from the Atchafalaya River.
- Hmd1**
Distributary complex of Mississippi River meander-belt No. 1—silty to clayey, natural levee deposits of distributaries originating from meander-belt No. 1.
- Hm1**
Natural levee complex of Mississippi River meander-belt No. 1—silty to sandy overbank deposits that compose the low natural levees flanking the Mississippi River meander-belt No. 1.

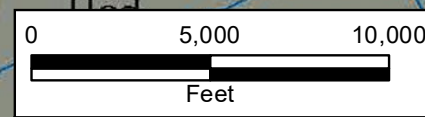
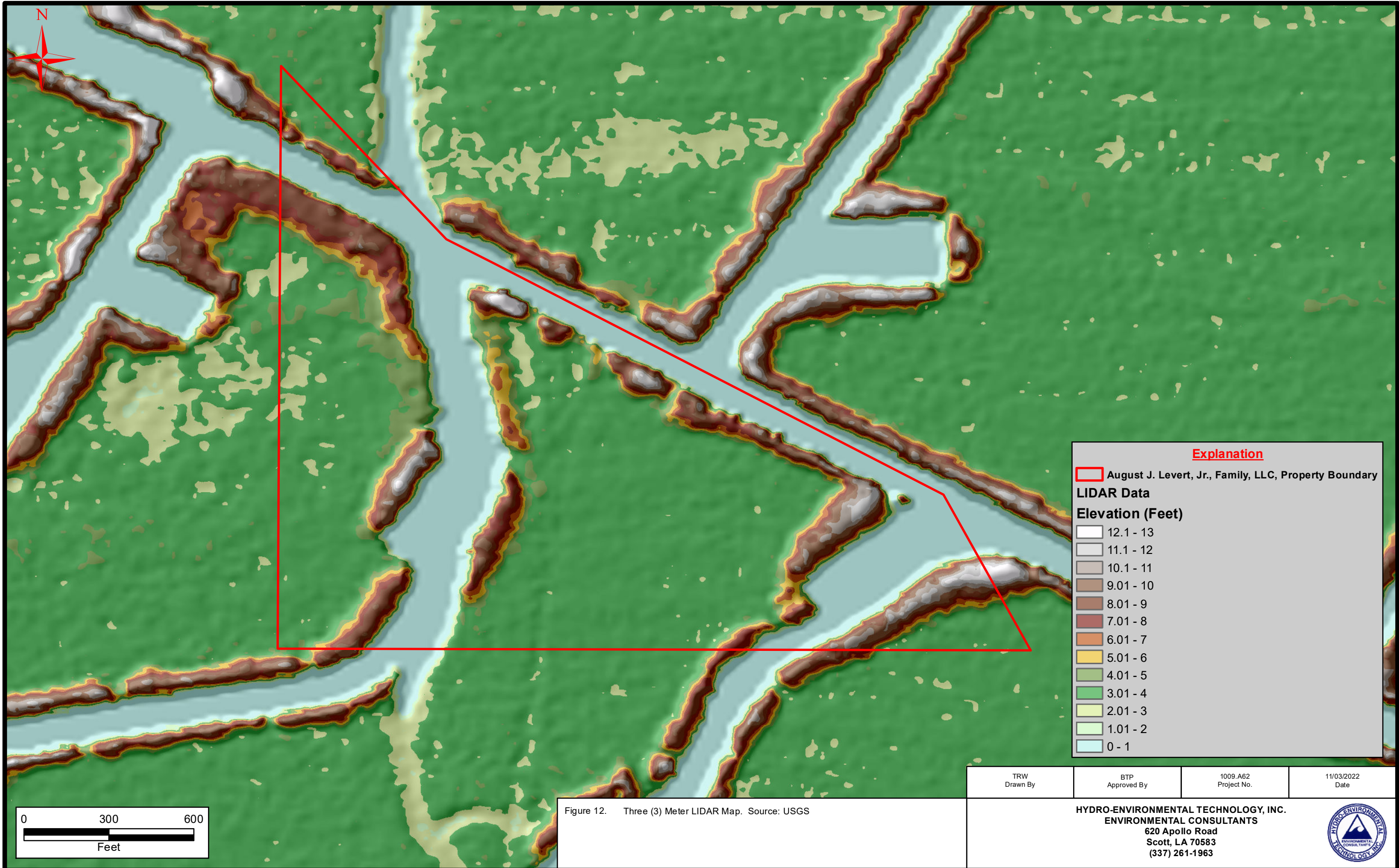


Figure 11. Baton Rouge 30 x 60 Minute Geologic Quadrangle, 2000. Source: LGS

TRW Drawn By	BTP Approved By	1009.A62 Project No.	11/03/2022 Date
-----------------	--------------------	-------------------------	--------------------

HYDRO-ENVIRONMENTAL TECHNOLOGY, INC.
 ENVIRONMENTAL CONSULTANTS
 620 Apollo Road
 Scott, LA 70583
 (337) 261-1963





Explanation

August J. Levert, Jr., Family, LLC, Property Boundary

LIDAR Data

Elevation (Feet)

	12.1 - 13
	11.1 - 12
	10.1 - 11
	9.01 - 10
	8.01 - 9
	7.01 - 8
	6.01 - 7
	5.01 - 6
	4.01 - 5
	3.01 - 4
	2.01 - 3
	1.01 - 2
	0 - 1

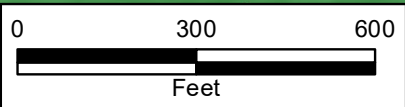


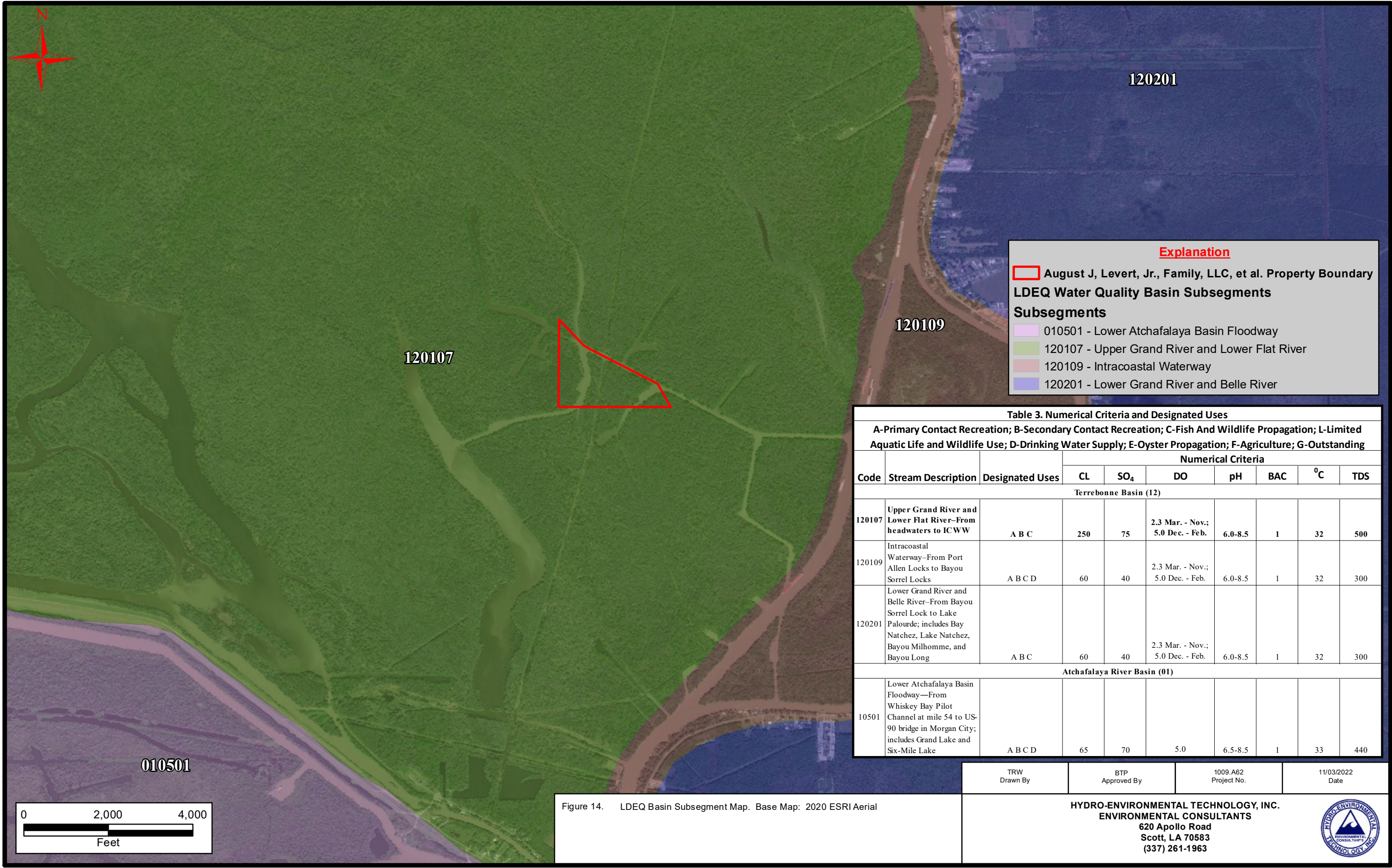
Figure 12. Three (3) Meter LIDAR Map. Source: USGS

TRW Drawn By	BTP Approved By	1009.A62 Project No.	11/03/2022 Date
-----------------	--------------------	-------------------------	--------------------

HYDRO-ENVIRONMENTAL TECHNOLOGY, INC.
ENVIRONMENTAL CONSULTANTS
 620 Apollo Road
 Scott, LA 70583
 (337) 261-1963







Explanation

August J, Levert, Jr., Family, LLC, et al. Property Boundary

LDEQ Water Quality Basin Subsegments

Subsegments

- 010501 - Lower Atchafalaya Basin Floodway
- 120107 - Upper Grand River and Lower Flat River
- 120109 - Intracoastal Waterway
- 120201 - Lower Grand River and Belle River

Table 3. Numerical Criteria and Designated Uses

A-Primary Contact Recreation; B-Secondary Contact Recreation; C-Fish And Wildlife Propagation; L-Limited Aquatic Life and Wildlife Use; D-Drinking Water Supply; E-Oyster Propagation; F-Agriculture; G-Outstanding

Code	Stream Description	Designated Uses	Numerical Criteria						
			CL	SO ₄	DO	pH	BAC	°C	TDS
Terrebonne Basin (12)									
120107	Upper Grand River and Lower Flat River—From headwaters to ICWW	A B C	250	75	2.3 Mar. - Nov.; 5.0 Dec. - Feb.	6.0-8.5	1	32	500
120109	Intracoastal Waterway—From Port Allen Locks to Bayou Sorrel Locks	A B C D	60	40	2.3 Mar. - Nov.; 5.0 Dec. - Feb.	6.0-8.5	1	32	300
120201	Lower Grand River and Belle River—From Bayou Sorrel Lock to Lake Palourde; includes Bay Natchez, Lake Natchez, Bayou Milhomme, and Bayou Long	A B C	60	40	2.3 Mar. - Nov.; 5.0 Dec. - Feb.	6.0-8.5	1	32	300
Atchafalaya River Basin (01)									
10501	Lower Atchafalaya Basin Floodway—From Whiskey Bay Pilot Channel at mile 54 to US-90 bridge in Morgan City; includes Grand Lake and Six-Mile Lake	A B C D	65	70	5.0	6.5-8.5	1	33	440

TRW Drawn By	BTP Approved By	1009.A62 Project No.	11/03/2022 Date
-----------------	--------------------	-------------------------	--------------------

Figure 14. LDEQ Basin Subsegment Map. Base Map: 2020 ESRI Aerial

HYDRO-ENVIRONMENTAL TECHNOLOGY, INC.
ENVIRONMENTAL CONSULTANTS
 620 Apollo Road
 Scott, LA 70583
 (337) 261-1963

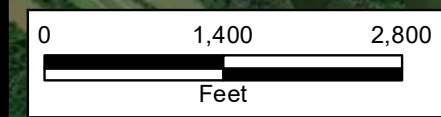
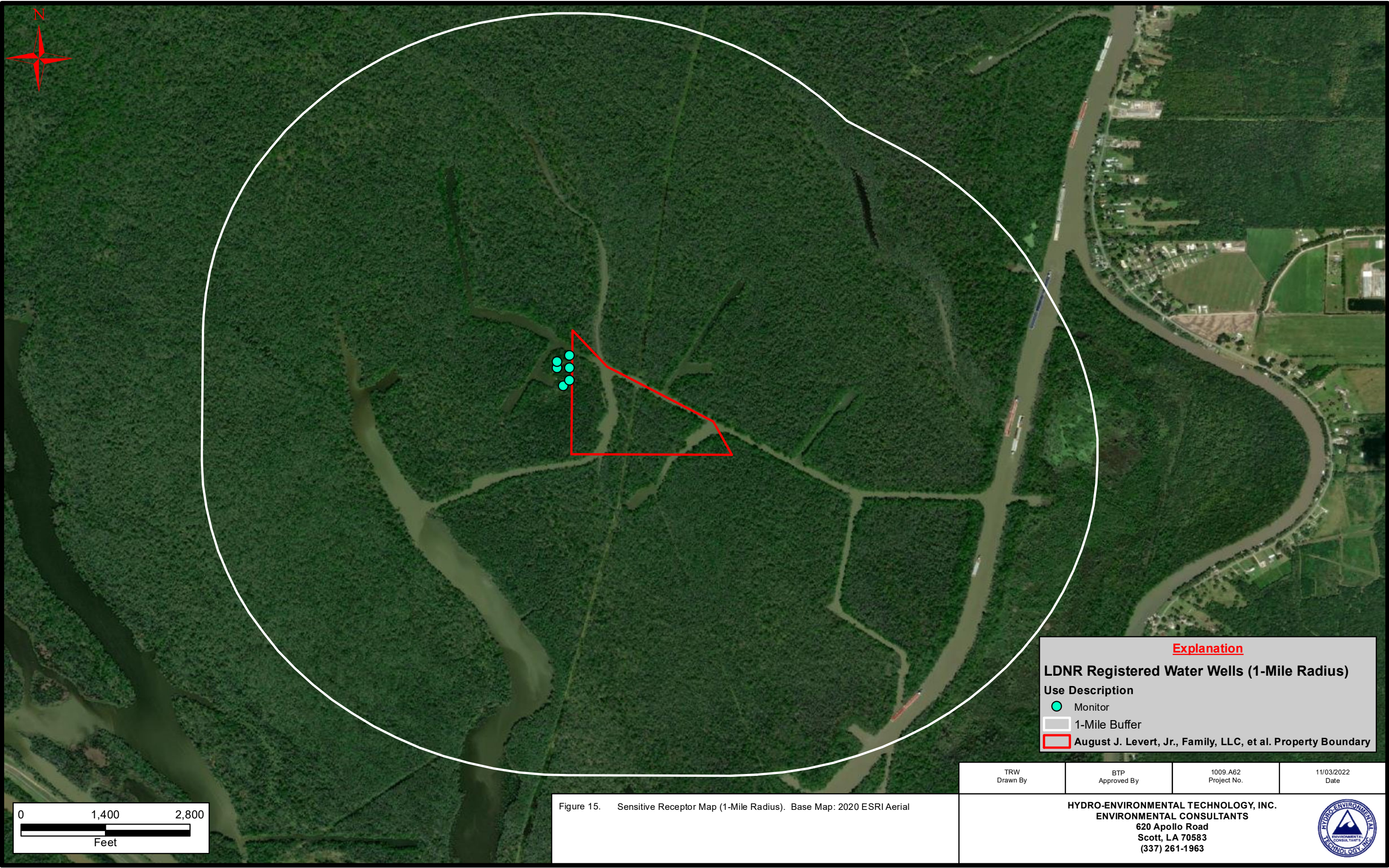


Figure 15. Sensitive Receptor Map (1-Mile Radius). Base Map: 2020 ESRI Aerial

Explanation

LDNR Registered Water Wells (1-Mile Radius)

Use Description

- Monitor
- 1-Mile Buffer
- August J. Levert, Jr., Family, LLC, et al. Property Boundary

TRW Drawn By	BTP Approved By	1009.A62 Project No.	11/03/2022 Date
-----------------	--------------------	-------------------------	--------------------

HYDRO-ENVIRONMENTAL TECHNOLOGY, INC.
ENVIRONMENTAL CONSULTANTS
 620 Apollo Road
 Scott, LA 70583
 (337) 261-1963

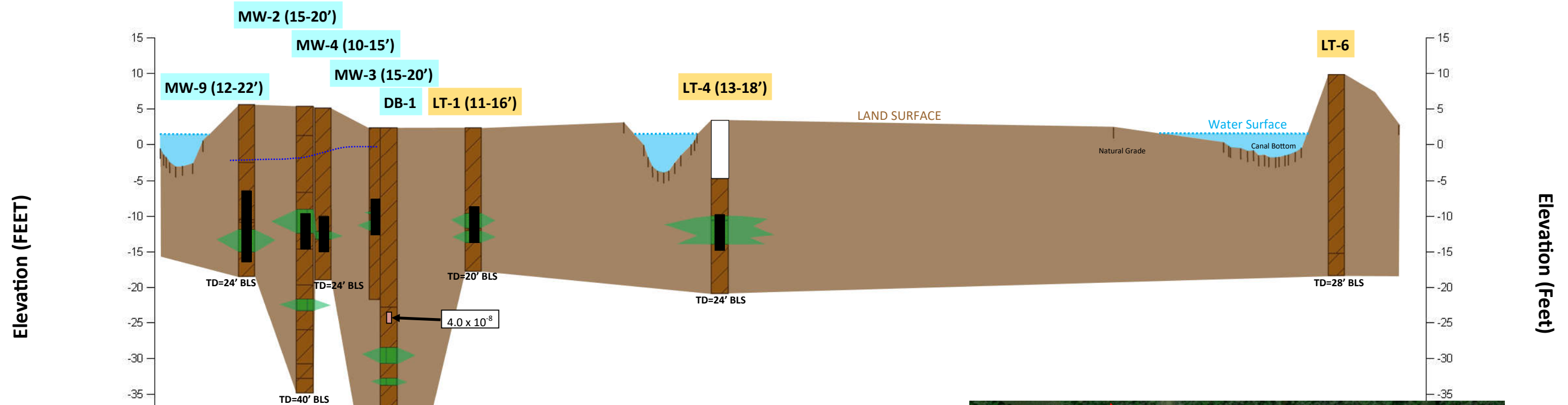


Northwest

A

Southeast

A'



EXPLANATION

	CLAY		CLAY DOMINANT
	SILT		SILT DOMINANT
	WATER		
	No Recovery		MW-2 HET Boring/Well (Screened Interval)
	Vertical Permeability		LT-6 ERM Boring/Well (Screened Interval)
	WELL SCREEN		Groundwater Elevation (07/28/2022)

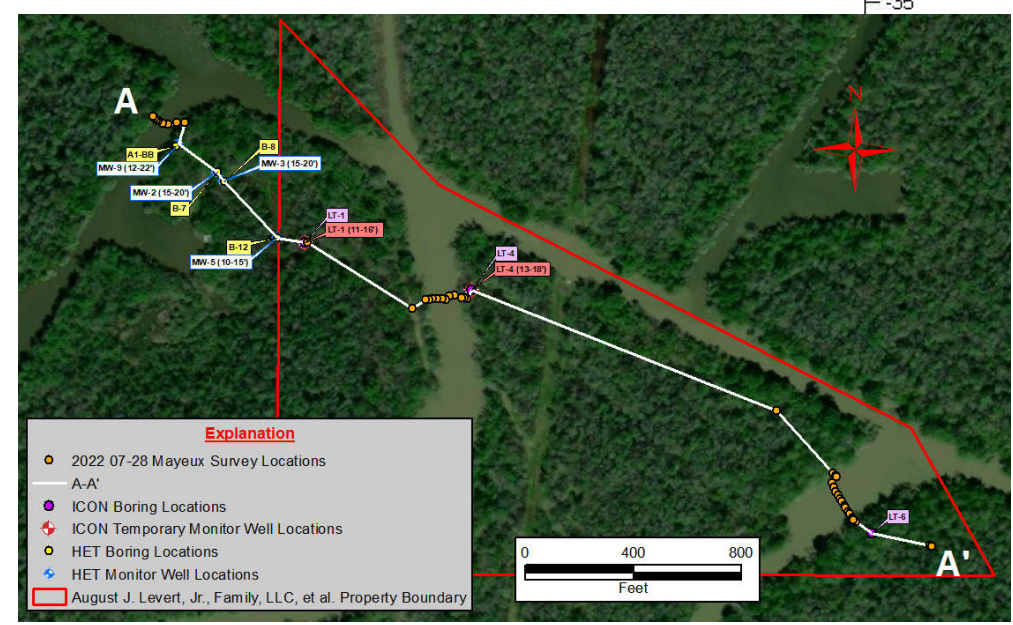
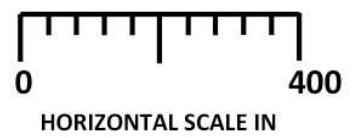


Figure 16. Lithologic Cross Section A-A'
 Note: Mayeux survey data utilized for canal bottoms and natural grade locations (LT-6 boring elevation data was obtained from LI-DAR Data).

TRW Drawn By	BTP Approved By	1009.A62 Project #	11/03/2022 Date
-----------------	--------------------	-----------------------	--------------------

HYDRO-ENVIRONMENTAL TECHNOLOGY, INC.
 ENVIRONMENTAL CONSULTANTS
 620 Apollo Road
 Scott, LA 70583
 (337) 261-1963

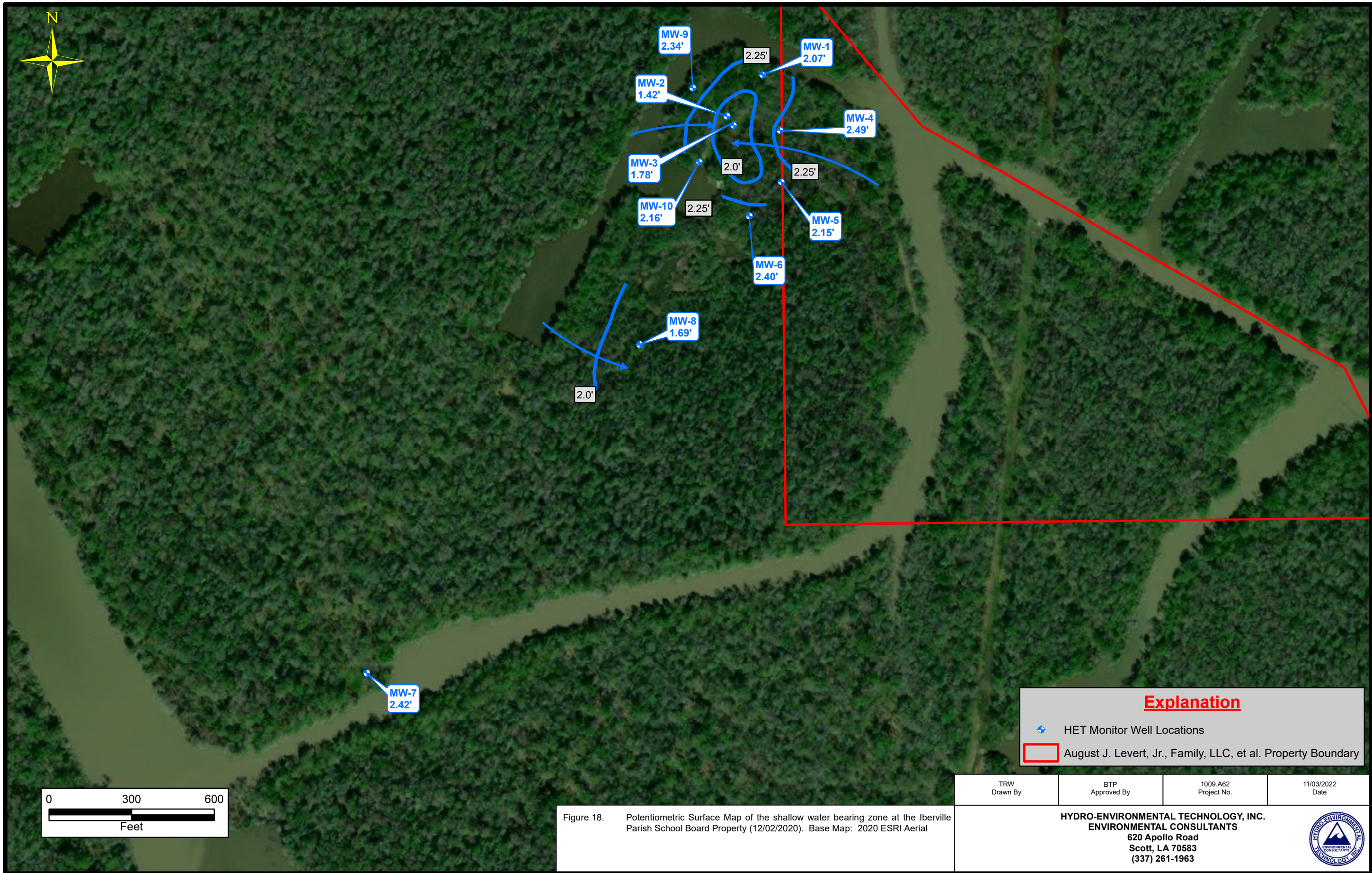


Explanation			
	HET Monitor Well Locations		
	Mayeux Survey Surface Water Locations (10/13/15)		
	August J. Levert, Jr., Family, LLC, et al. Property Boundary		

RJB Drawn By	BTP Approved By	1009.A62 Project No.	11/03/2022 Date
-----------------	--------------------	-------------------------	--------------------

Figure 17. Potentiometric Surface Map (10/13/15). Base Map: 2020 ESRI Aerial

HYDRO-ENVIRONMENTAL TECHNOLOGY, INC.
ENVIRONMENTAL CONSULTANTS
620 Apollo Road
Scott, LA 70583
(337) 261-1963



Explanation	
	HET Monitor Well Locations
	August J. Levert, Jr., Family, LLC, et al. Property Boundary

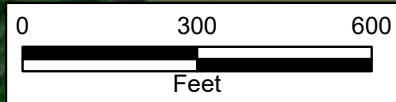


Figure 18. Potentiometric Surface Map of the shallow water bearing zone at the Iberville Parish School Board Property (12/02/2020). Base Map: 2020 ESRI Aerial

TRW Drawn By	BTP Approved By	1009.A62 Project No.	11/03/2022 Date
-----------------	--------------------	-------------------------	--------------------

HYDRO-ENVIRONMENTAL TECHNOLOGY, INC.
ENVIRONMENTAL CONSULTANTS
 620 Apollo Road
 Scott, LA 70583
 (337) 261-1963



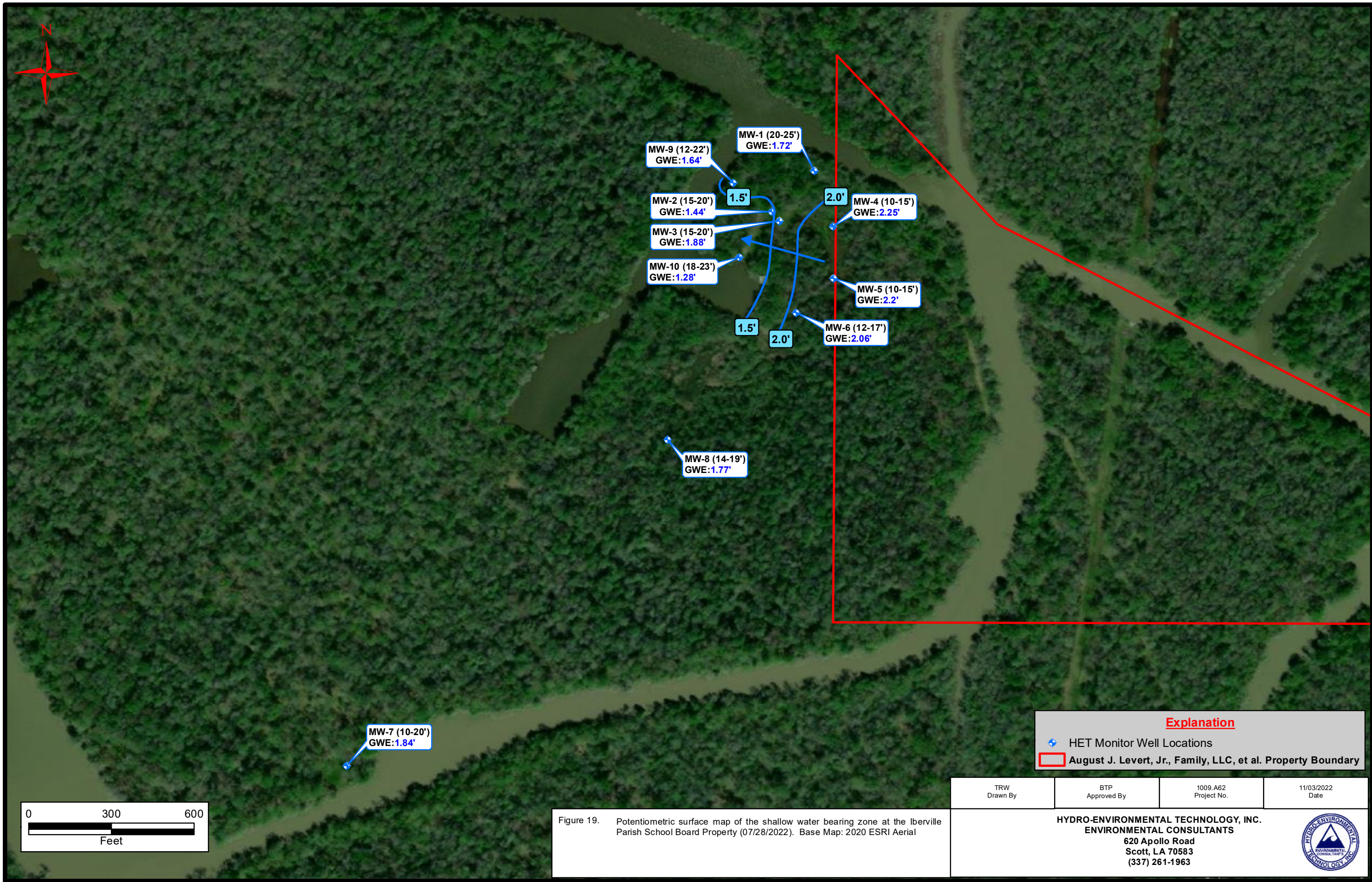


Figure 19. Potentiometric surface map of the shallow water bearing zone at the Iberville Parish School Board Property (07/28/2022). Base Map: 2020 ESRI Aerial

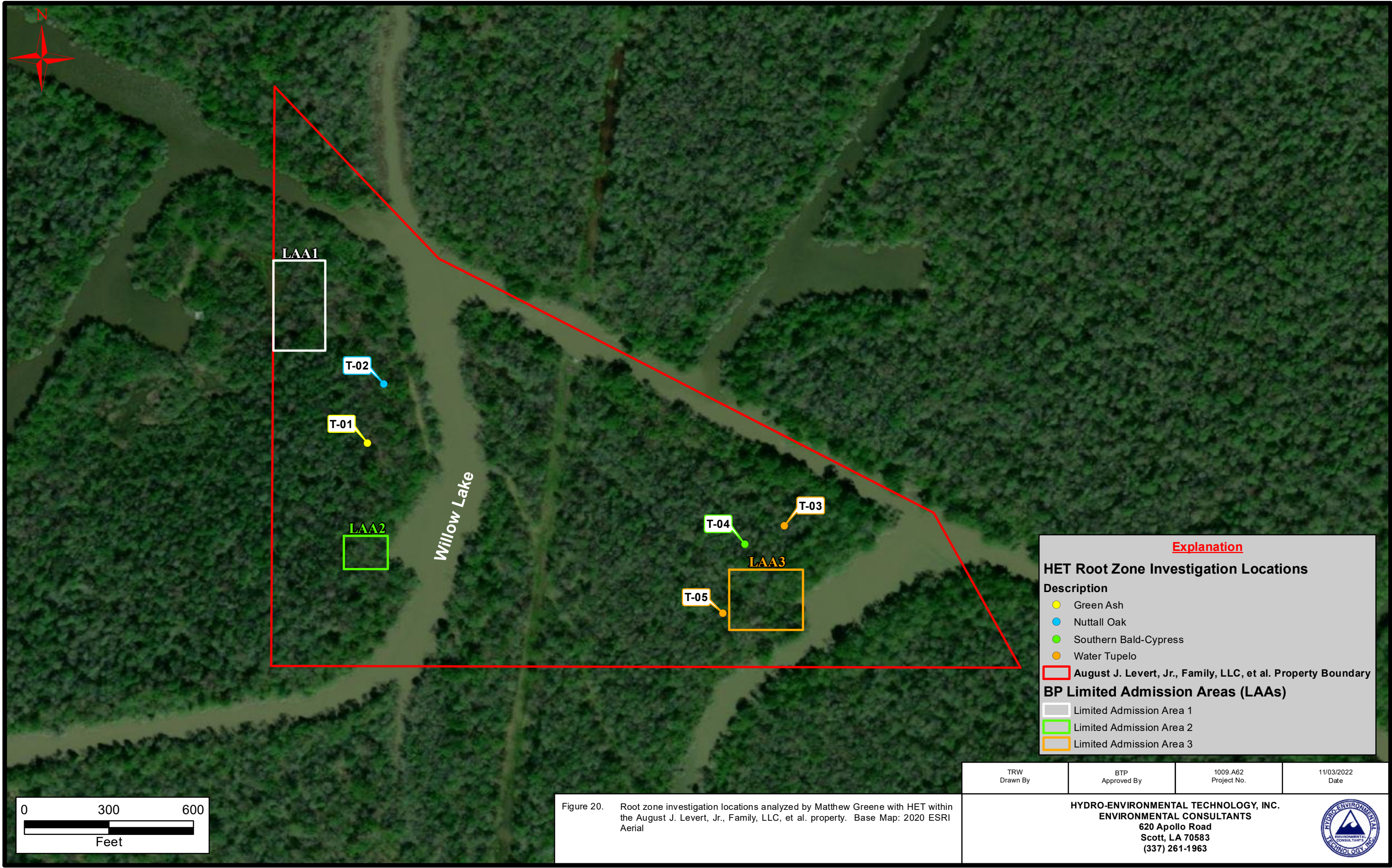
Explanation

- + HET Monitor Well Locations
- August J. Levert, Jr., Family, LLC, et al. Property Boundary

TRW Drawn By	BTP Approved By	1009.A62 Project No.	11/03/2022 Date
--------------	-----------------	----------------------	-----------------

HYDRO-ENVIRONMENTAL TECHNOLOGY, INC.
ENVIRONMENTAL CONSULTANTS
 620 Apollo Road
 Scott, LA 70583
 (337) 261-1963





Explanation

HET Root Zone Investigation Locations

Description

- Green Ash
- Nuttall Oak
- Southern Bald-Cypress
- Water Tupelo

August J. Levert, Jr., Family, LLC, et al. Property Boundary

BP Limited Admission Areas (LAAs)

- Limited Admission Area 1
- Limited Admission Area 2
- Limited Admission Area 3

TRW Drawn By	BTP Approved By	1009.A62 Project No.	11/03/2022 Date
-----------------	--------------------	-------------------------	--------------------

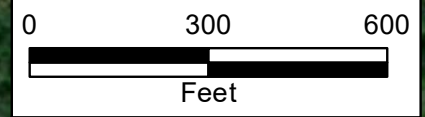
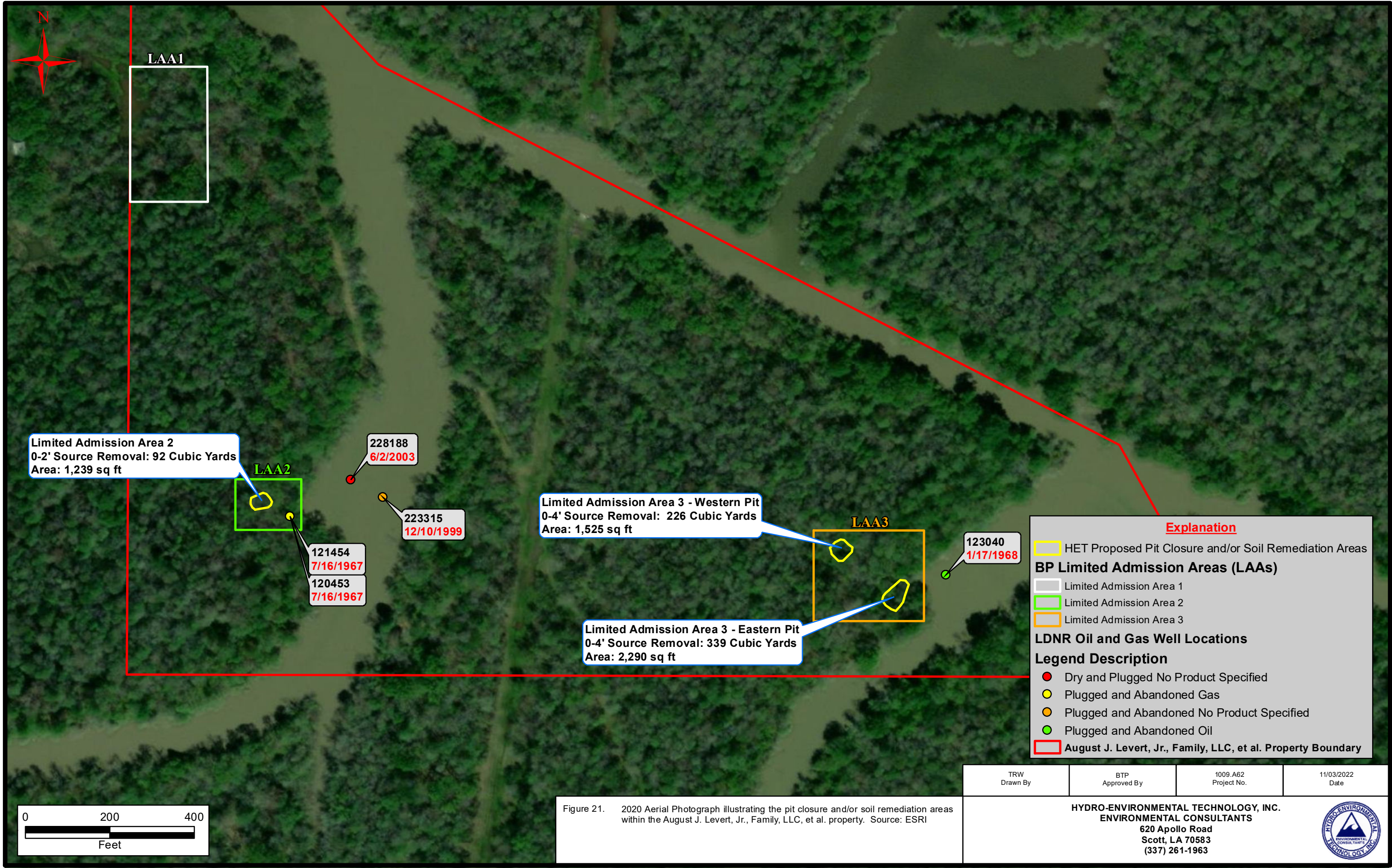


Figure 20. Root zone investigation locations analyzed by Matthew Greene with HET within the August J. Levert, Jr., Family, LLC, et al. property. Base Map: 2020 ESRI Aerial

HYDRO-ENVIRONMENTAL TECHNOLOGY, INC.
ENVIRONMENTAL CONSULTANTS
 620 Apollo Road
 Scott, LA 70583
 (337) 261-1963





Limited Admission Area 2
 0-2' Source Removal: 92 Cubic Yards
 Area: 1,239 sq ft

LAA2

228188
 6/2/2003

223315
 12/10/1999

121454
 7/16/1967

120453
 7/16/1967

Limited Admission Area 3 - Western Pit
 0-4' Source Removal: 226 Cubic Yards
 Area: 1,525 sq ft

LAA3

123040
 1/17/1968

Limited Admission Area 3 - Eastern Pit
 0-4' Source Removal: 339 Cubic Yards
 Area: 2,290 sq ft

Explanation

- HET Proposed Pit Closure and/or Soil Remediation Areas

BP Limited Admission Areas (LAAs)

- Limited Admission Area 1
- Limited Admission Area 2
- Limited Admission Area 3

LDNR Oil and Gas Well Locations

Legend Description

- Dry and Plugged No Product Specified
- Plugged and Abandoned Gas
- Plugged and Abandoned No Product Specified
- Plugged and Abandoned Oil
- August J. Levert, Jr., Family, LLC, et al. Property Boundary

TRW Drawn By	BTP Approved By	1009.A62 Project No.	11/03/2022 Date
-----------------	--------------------	-------------------------	--------------------

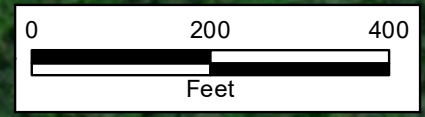


Figure 21. 2020 Aerial Photograph illustrating the pit closure and/or soil remediation areas within the August J. Levert, Jr., Family, LLC, et al. property. Source: ESRI

HYDRO-ENVIRONMENTAL TECHNOLOGY, INC.
 ENVIRONMENTAL CONSULTANTS
 620 Apollo Road
 Scott, LA 70583
 (337) 261-1963



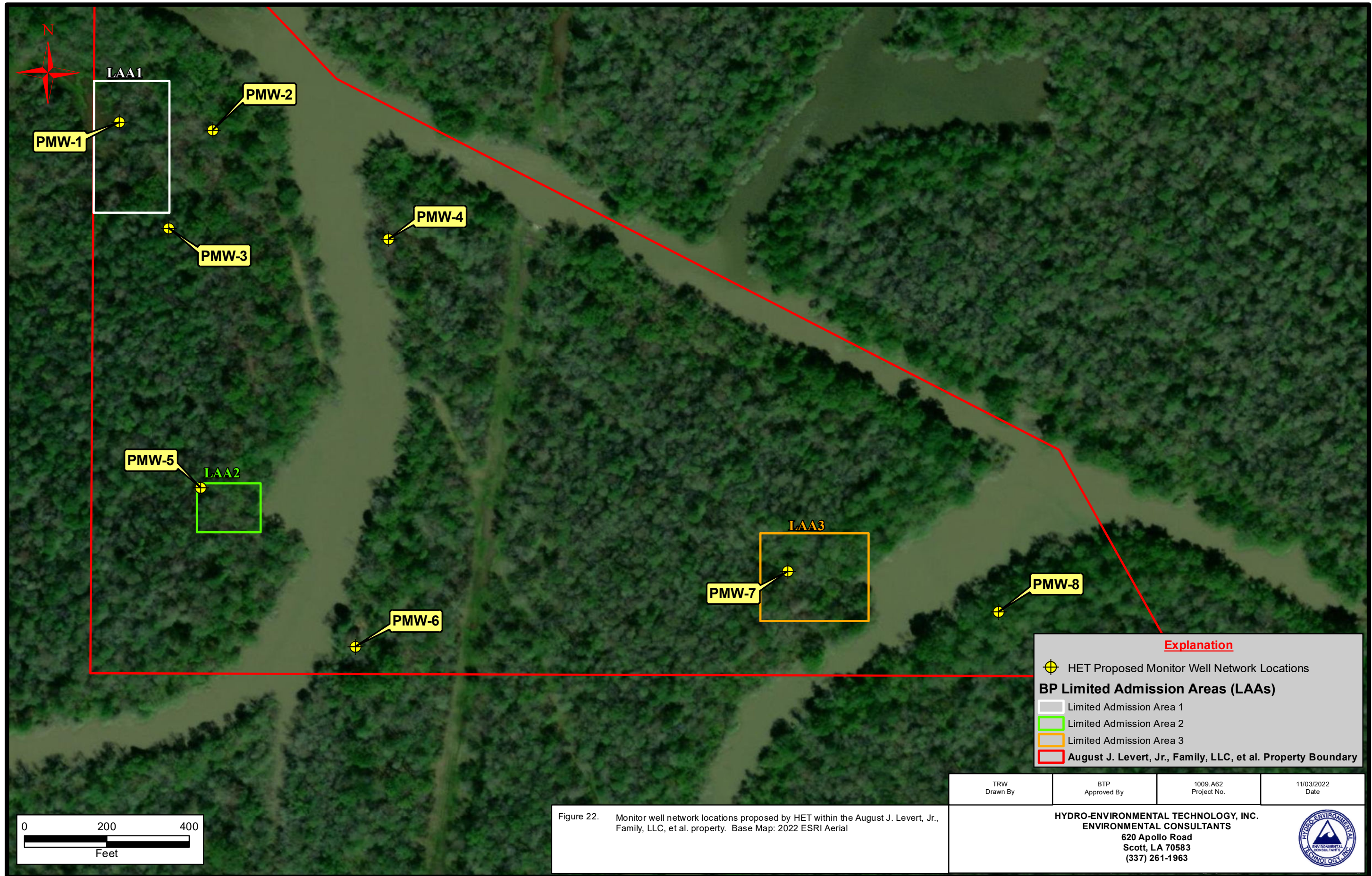


Figure 22. Monitor well network locations proposed by HET within the August J. Levert, Jr., Family, LLC, et al. property. Base Map: 2022 ESRI Aerial

TRW Drawn By	BTP Approved By	1009.A62 Project No.	11/03/2022 Date
HYDRO-ENVIRONMENTAL TECHNOLOGY, INC. ENVIRONMENTAL CONSULTANTS 620 Apollo Road Scott, LA 70583 (337) 261-1963			