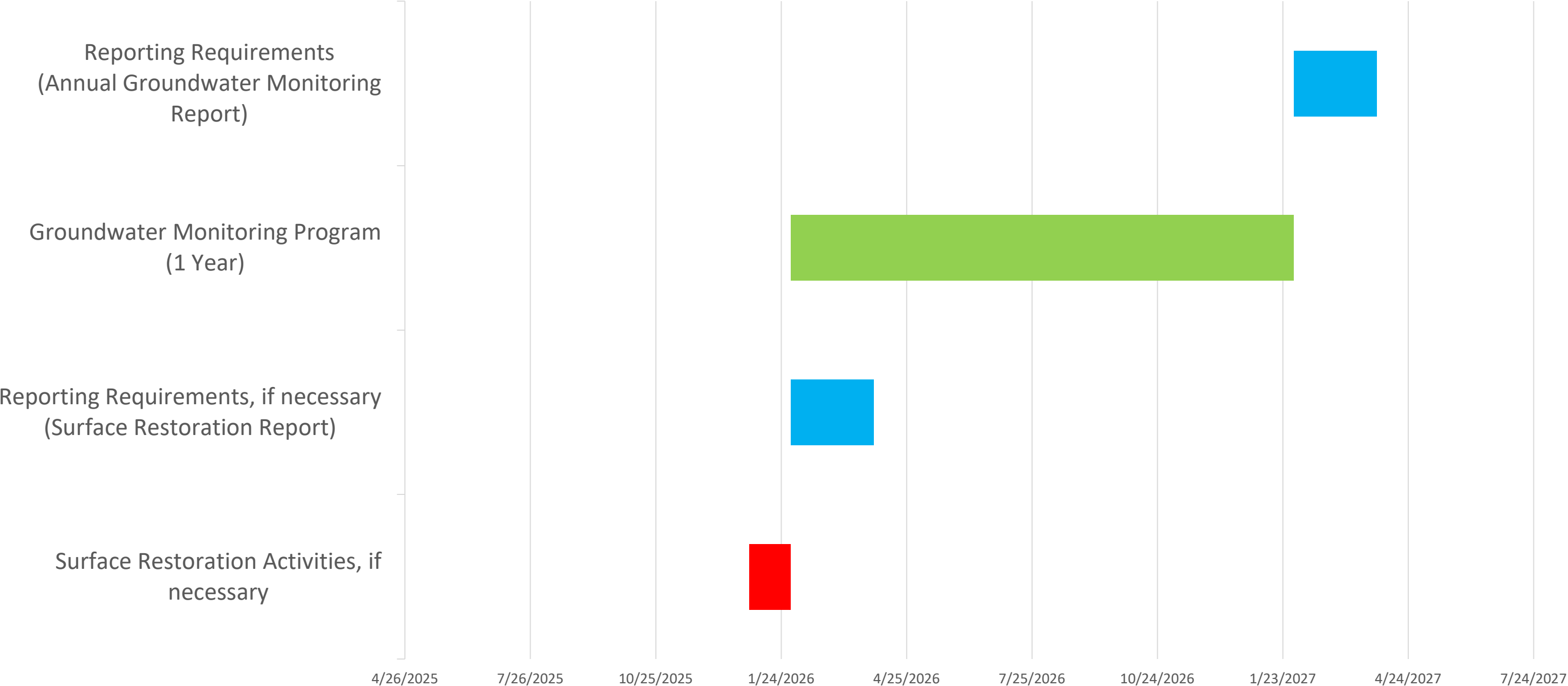



APPENDIX U
COST ESTIMATES

ESTIMATED TIMELINE: MOST FEASIBLE PLAN
Castex Development, LLC. Property
West Mermentau Oil and Gas Field
Jefferson Davis Parish, Louisiana



Estimated Capital Cost: Castex Development, LLC


I. Site Investigation Activities - Monitor Well Installation						
TIME FRAME: Four (4) Days - Installation of ten (10) monitor wells via Direct Push						
Installation of five (5) "A-Zone" Monitor Wells - Four (4) 8-hour work days						
Item	Description	Unit Cost	Quantity	Cost	Source	
Director of Field Operations	Installation of Monitor Wells	\$95.00	40	\$3,800.00	HET Hourly Rates	
Hydrogeologist III or IV	Installation of Monitor Wells	\$135.00	40	\$5,400.00	HET Hourly Rates	
Hydrogeologist III or Environmental Specialist III	Installation of Monitor Wells	\$95.00	40	\$3,800.00	HET Hourly Rates	
Mileage - 1/2 ton Truck	74 miles per trip for four (4) trips	\$1.00	296	\$296.00	Professional Judgement and Actual Costs	
Mileage - 3/4 ton Truck	74 miles per trip for four (4) trips	\$1.50	296	\$444.00	Professional Judgement and Actual Costs	
Geoprobe Rental	HET Geoprobe 7822DT @ \$2,500 per day	\$2,500.00	4	\$10,000.00	Professional Judgement and Actual Costs	
Mobilization Fee	Geoprobe mobe/demobe @ \$500	\$500.00	1	\$500.00	Professional Judgement and Actual Costs	
Monitor Well Installation and Surface Completion Supplies	Well screen, protective casings, sand pack, bentonite, cement, etc. @ \$460 per well	\$460.00	5	\$2,300.00	Professional Judgement and Actual Costs	
55-Gallon DOTD Drum	`	\$102.50	1	\$102.50	Professional Judgement and Actual Costs	
GPS Rental	Geode GPS @ \$75 per day	\$75.00	3	\$225.00	Professional Judgement and Actual Costs	
Mayeux Surveying	Monitor well survey @ \$2,500 per day	\$2,500.00	1	\$2,500.00	Professional Judgement and Actual Costs	
5% MARKUP - Subcontracted labor (Mayeux)	Standard Subcontracted labor markup (5%)	\$125.00	1	\$125.00	Professional Judgement and Actual Costs	
Subtotal:				\$29,492.50	Subtotal	
Installation of five (5) "B-Zone" Monitor Wells - Six (6) 8-hour work days						
Item	Description	Unit Cost	Quantity	Cost	Source	
Hydrogeologist III or IV	Oversight of Monitor Well Installation	\$135.00	48	\$6,480.00	HET Hourly Rates	
Hydrogeologist III or Environmental Specialist III	Oversight of Monitor Well Installation	\$95.00	48	\$4,560.00	HET Hourly Rates	
Mileage - 1/2 ton Truck	74 miles per trip for six (6) trips	\$1.00	444	\$444.00	Professional Judgement and Actual Costs	
GPS Rental	Geode GPS @ \$75 per day	\$75.00	5	\$375.00	Professional Judgement and Actual Costs	
Disposal Costs.	Soil profile and investigation derived waste (IDW) trucking and disposal.	\$2,000.00	1	\$2,000.00	Professional Judgement and Actual Costs	
Walker-Hill Environmental	Monitor well installation via Sonic Rig	\$62,000.00	1	\$62,000.00	Professional Judgement and Actual Costs	
5% MARKUP - Subcontracted labor (WHE)	Standard Subcontracted labor markup (5%)	\$3,100.00	1	\$3,100.00	Professional Judgement and Actual Costs	
Subtotal:				\$78,959.00	Subtotal	
Plugging and Abandonment of "A-Zone" and "B-Zone" Monitor Wells - Four(4) 8-hour work days						
Director of Field Operations	Plugging and Abandonment of Monitor Wells	\$95.00	40	\$3,800.00	HET Hourly Rates	
Environmental Specialist III	Plugging and Abandonment of Monitor Wells	\$95.00	40	\$3,800.00	HET Hourly Rates	
Mileage - 1/2 ton Truck	74 miles per trip for four (4) trips	\$1.00	296	\$296.00	Professional Judgement and Actual Costs	
Mileage - 3/4 ton Truck	74 miles per trip for four (4) trips	\$1.50	296	\$444.00	Professional Judgement and Actual Costs	
Geoprobe Rental	HET Geoprobe 7822DT @ \$2,500 per day	\$2,500.00	4	\$10,000.00	Professional Judgement and Actual Costs	
Mobilization Fee	Geoprobe mobe/demobe @ \$500	\$500.00	1	\$500.00	Professional Judgement and Actual Costs	
Subtotal:				\$18,840.00	Subtotal	
Total Capital Cost: Soil Boring and Monitor Well Installations:				\$127,291.50	Total Capital Cost	

Estimated Capital Cost: Castex Development, LLC

II. Site Investigation Activities - Groundwater Monitoring (Annual)					
TIME FRAME: One (1) to Three (3) Years - Annual Groundwater Monitoring for up to Three (3) Years					
Collection of groundwater samples - Three (3) 8-hour work days					
Item	Description	Unit Cost	Quantity	Cost	Source
Field Manager or Director of Field Operations	Collect groundwater and surface water samples	\$95.00	24	\$2,280.00	HET Hourly Rates
Hydrogeologist III	Collect groundwater and surface water samples	\$95.00	24	\$2,280.00	HET Hourly Rates
Mileage - 3/4 ton Truck	74 miles per trip for three (3) trips	\$1.50	222	\$333.00	Professional Judgement and Actual Costs
Sampling equipment	Generator, turbidity meter, YSI, pumps, and interface probe @ \$435 per day.	\$435.00	3	\$1,305.00	Professional Judgement and Actual Costs
Poly tubing	Poly tubing (5/16") @ \$0.18 per foot.	\$0.18	650	\$117.00	
Silicone Tubing	Silicone tubing @ \$5.20 per foot.	\$5.20	5	\$26.00	
Sample Kit	Sample containers, gloves, etc. @ \$25 per sample	\$25.00	14	\$350.00	Professional Judgement and Actual Costs
55-Gallon DOTD Drum	55-Gallon drum for disposal of waste	\$102.50	1	\$102.50	Professional Judgement and Actual Costs
Disposal Costs.	Soil profile and investigation derived waste (IDW) trucking and disposal.	\$1,200.00	1	\$1,200.00	Professional Judgement and Actual Costs
Subtotal:				\$7,993.50	Subtotal
Laboratory analyses					
Item	Description	Unit Cost	Quantity	Cost	Source
Chloride	Recommended groundwater parameters for laboratory analysis.	\$12.00	14	\$168.00	Professional Judgement and Actual Costs
TDS	Recommended groundwater parameters for laboratory analysis.	\$12.00	14	\$168.00	Professional Judgement and Actual Costs
Sulfate	Recommended groundwater parameters for laboratory analysis.	\$26.00	14	\$364.00	Professional Judgement and Actual Costs
Bromide	Recommended groundwater parameters for laboratory analysis.	\$22.00	14	\$308.00	Professional Judgement and Actual Costs
Total Alkalinity	Recommended groundwater parameters for laboratory analysis.	\$12.00	14	\$168.00	Professional Judgement and Actual Costs
5% MARKUP - Subcontracted labor (Waypoint)	Standard Subcontracted labor markup (5%)	\$58.80	1	\$58.80	Professional Judgement and Actual Costs
Subtotal:				\$1,234.80	Subtotal
Total Capital Cost: Groundwater Sampling:				\$9,228.30	Total Capital Cost



Estimated Capital Cost: Castex Development, LLC

III. HET Safety Management, Project Management, and Reporting Requirements						
TIME FRAME: Office Support Before and During Field Activities, and Reporting						
Pre-Field Work Planning and Office Support						
Item	Description	Unit Cost	Quantity	Cost	Source	
Senior Hydrogeologist	Project Management	\$160.00	4	\$640.00	HET Hourly Rates	
HSSE Director	Prepare and implement Safety Plans/Forms/Manuals/etc.	\$155.00	2	\$310.00	HET Hourly Rates	
Hydrogeologist III or Environmental Scientists III	Review Field Data, Tabulate Data, GIS Mapping	\$95.00	4	\$380.00	HET Hourly Rates	
Environmental Specialist I	Load equipment, prep for field work	\$75.00	8	\$600.00	HET Hourly Rates	
Subtotal:				\$1,930.00	Subtotal	
Report Preparation						
Item	Description	Unit Cost	Quantity	Cost	Source	
Principal Hydrogeologist	Project Overview and Management, Report Preparation	\$180.00	1	\$180.00	HET Hourly Rates	
Senior Hydrogeologist	Project Management, Report Preparation	\$165.00	4	\$660.00	HET Hourly Rates	
Hydrogeologist III	Project Management, Report Preparation	\$95.00	24	\$2,280.00	HET Hourly Rates	
GIS Cartographer II	GIS Mapping, Prepare Report Figures	\$85.00	4	\$340.00	HET Hourly Rates	
Hydrogeologist II or Environmental Scientists II	Review Field Data, Tabulate Data, GIS Mapping, Sample Protocol	\$85.00	4	\$340.00	HET Hourly Rates	
Environmental Scientist II	Review Lab Reports, Tabulate Data, Prepare Report Tables	\$85.00	4	\$340.00	HET Hourly Rates	
Technical Editor	Review and edits to Report	\$55.00	2	\$110.00	HET Hourly Rates	
Subtotal:				\$4,250.00	Subtotal	
Total Capital Cost: Safety Management, Project Management, and Reporting Requirements:				\$6,180.00	Total Capital Cost	
TOTAL CAPITAL COSTS SUMMARY						
Item	Description	Unit Cost	Quantity	Cost	Source	
I. Site Investigation Activities - Monitor Well Installation				\$127,291.50		
II. Site Investigation Activities - Groundwater Monitoring (Annual)				\$36,913.20		
III. HET Safety Management, Project Management, and Reporting Requirements				\$6,180.00		
TOTAL ESTIMATED CAPITAL COSTS				\$170,384.70	Total Capital Cost	

Remedial Cost Estimate



I. Remedial Activities: Soil Amendments

08/01/25

Permitting, Planning, Scheduling, Logistics, Safety Preparation

Item	Description	Unit Cost	Quantity	Cost	Source
Principal Environmental Scientist	Remedial Planning; Coordination/Planning/Scheduling with subcontractors	\$180.00	12	\$2,160.00	HET Hourly Rates
Environmental Scientist IV	Remedial Planning; Coordination/Planning/Scheduling with subcontractors	\$135.00	24	\$3,240.00	HET Hourly Rates
HSSE Director	Prepare and Implement Safety Plans/Forms/Manuals/etc.	\$155.00	8	\$1,240.00	HET Hourly Rates
EMC Third Party Line Locate	Subsurface survey @ \$3,500 per day	\$3,500.00	1	\$3,500.00	Subcontractor Rates
5% MARKUP - Subcontracted labor (EMC)	Standard Subcontracted labor markup (5%)	\$175.00	1	\$175.00	Standard Mark-Up
Subtotal:				\$10,315.00	Subtotal

Implementation of Remedial Activities

Item	Description	Unit Cost	Quantity	Cost	Source
Equipment	Tractors and implements required to prepare the site and apply soil amendments	\$12,000.00	1	\$12,000.00	HET Rates
Slurry and Irrigation Costs (if needed)	Equipment and Irrigation costs if slurring of the remedial area is warranted	\$15,000.00	1	\$15,000.00	HET Rates
Mobe/Demobe	Transportation of equipment	\$1,500.00	1	\$1,500.00	HET Rates
Soil Amendments	Appropriate soil amendments	\$6,500.00	1	\$6,500.00	Supplies Estimate
Principal Environmental Scientist	Conduct remedial activities (application of soil amendments)	\$180.00	15	\$2,700.00	HET Hourly Rates
Hydrogeologist IV or Environmental Scientist IV	Conduct remedial activities (application of soil amendments)	\$135.00	32	\$4,320.00	HET Hourly Rates
Environmental Specialist III	Conduct remedial activities (application of soil amendments)	\$75.00	32	\$2,400.00	HET Hourly Rates
Laboratory Analysis	Laboratory Analysis of Soil Samples	\$313.00	6	\$1,878.00	Subcontract Laboratory Estimate
5% MARKUP - Subcontracted Laboratory Analyses - Waypoint Analytical	Standard Subcontracted lab markup (5%)	\$93.90	1	\$93.90	Standard Mark-Up
Mileage - 1/2 ton Truck	Round trip of 80 miles for six (6) trips	\$1.00	480	\$480.00	HET Rates
Subtotal:				\$46,871.90	Subtotal

Office Support During Field Activities, Regulatory Correspondence, Reporting

Item	Description	Unit Cost	Quantity	Cost	Source
Principal Environmental Scientist	Project Overview and Management, Report Preparation, Communication with LDENR and Client	\$180.00	16	\$2,880.00	HET Hourly Rates
Hydrogeologist IV or Environmental Scientist IV	Project Management, Report Preparation, Review Field Data, Tabulate Data, GIS Mapping	\$135.00	16	\$2,160.00	HET Hourly Rates
Environmental Scientist II	Review Lab Reports, Tabulate Data, Prepare Report Tables	\$95.00	8	\$760.00	HET Hourly Rates
Technical Administrator	Field Document Organization, Report Review	\$55.00	6	\$330.00	HET Hourly Rates
Subtotal:				\$6,130.00	Subtotal
Total Cost: Soil Amendments				\$63,316.90	Total Cost

TOTAL ESTIMATED COSTS

Item	Cost	
I. Remedial Activities: Soil Amendments	\$63,316.90	
TOTAL ESTIMATED COSTS	\$63,316.90	TOTAL ESTIMATED COSTS



HYDRO-ENVIRONMENTAL TECHNOLOGY, INC.
Environmental Consultants
P.O. Box 60295
Lafayette, LA 70596-0295



620 Apollo Road
Scott, LA 70583
Phone (337) 261-1963

www.hydro-environmentaltechnology.com

August 04, 2025

BP America Production Company c/o
Mr. George Arceneaux III
Liskow & Lewis
1200 Camellia Blvd., Ste. 300
Lafayette, Louisiana 70508
(337) 232-7424

Re: **Alternate Plan Regarding the
Site Investigation Report and Proposed Remediation Plan**
Castex Development, LLC v. Anadarko Petroleum Corporation, et al.
31st Judicial District Court, Docket No. C-0502-20
Sections 13 and 39, Township 10 South, Range 03 West and
Sections 17 and 18, Township 10 South, Range 02 West
West Mermentau Oil and Gas Field
Jefferson Davis Parish, Louisiana
LDENR OC Legacy Project No. 031-027

Dear Mr. Arceneaux:

Hydro-Environmental Technology, Inc. (HET) has prepared this alternate plan as supplemental information to the Limited Admission Plan filed on behalf of bp on August 04, 2025, regarding the above referenced Castex Development, LLC property (the "Property"). This alternate plan is submitted at the request of Liskow and Lewis, APLC, for the purpose of the administrative hearing only should the Louisiana Department of Energy and Natural Resources Office of Conservation (LDENR) rule that such a supplemental plan is necessary to meet the requirements of 611.F.1 as supplemental information to the Site Investigation Report and Proposed Remediation Plan also dated August 01, 2025 (the "Plan") to address EC, SAR, and/or ESP concentrations at depths below the effective root zone and above the first encountered shallow water bearing zone (i.e., the vadose zone). This alternate plan is not required by Statewide Order 29-B, nor is the alternate plan endorsed, suggested to be the most feasible plan, or warranted or necessary for the protection of human health, the environment, or the reasonably intended uses of the Property.

The alternate plan, as referred to in Section 1.8 of the Plan, seeks to present alternate options to those presented in Section 8.0 of the Plan to address EC, SAR, and/or ESP concentrations within the vadose zone only via a combination of soil excavation and off-site disposal, as well as soil mixing and blending with potential addition of chemical amendments. This alternate plan is being submitted for administrative purposes only and in the event that the department finds that the Plan does not comply with Statewide Order 29-B, Sections 313.D, 313.E, and 611.F.1 despite the fact that the subsurface chloride concentration does not meet the definition of contamination under Statewide Order 29-B. Finally, this alternate plan is not required based on the overall regulatory framework established by the LDENR Office of Conservation, Environmental Division for the evaluation of sites pursuant to Statewide Order 29-B under LAC 43:XIX.313.D and 43:XIX.319, the second amended memorandum of understanding between the LDENR and the LDEQ dated February 23, 2023, and the provisions of Act 312 which include the use of all appropriate regulations.

BP/Castex-Ltd Adm Apx U-000007

The alternate plan offers two (2) options for soil remediation of EC, ESP, and/or SAR in the vadose zone as defined above. The difference is whether excavation or soil mixing and blending is chosen for soils between land surface and ten (10) feet below land surface (BLS) in the vicinity of soil boring HA-3 in the larger portion of the former pit associated with historical operations of LDENR Serial No. 76164 as defined in the Plan. Each option is consistent with excavation and off-site disposal for soil in the vicinity of boring HA-2 and mixing and blending only in the vicinity of borings SB-2 and DB-1. Again, this alternate plan is hypothetical in nature, unnecessary, and preliminary as additional assessment would be necessary to further define the extent of excavation and to confirm constituent concentrations, particularly EC, in the vicinity of borings SB-2 and DB-1, before proceeding with such an alternate plan. Figure 1 in Appendix A illustrates the general boundaries of the areas of soil remediation drawn to satisfy the potential requirements of the administrative hearing. Appendix B contains the supporting documentation for the costs associated with the unnecessary alternate soil remediation plan.

On behalf of Hydro-Environmental Technology, Inc. (HET), we appreciate the opportunity to provide these environmental services. Should you have any questions or need additional information, please feel free to contact us.

Sincerely,

HYDRO-ENVIRONMENTAL TECHNOLOGY, INC.

Matthew L. Greene

Matthew L. Greene (CPSS #495789)
Environmental Scientist

Craig E. Cormier

Craig E. Cormier, P.G. (LA #356)
Principal Environmental Scientist

Brent T. Pooler

Brent T. Pooler, P.G. (LA #274)
Principal Risk Analyst/Hydrogeologist

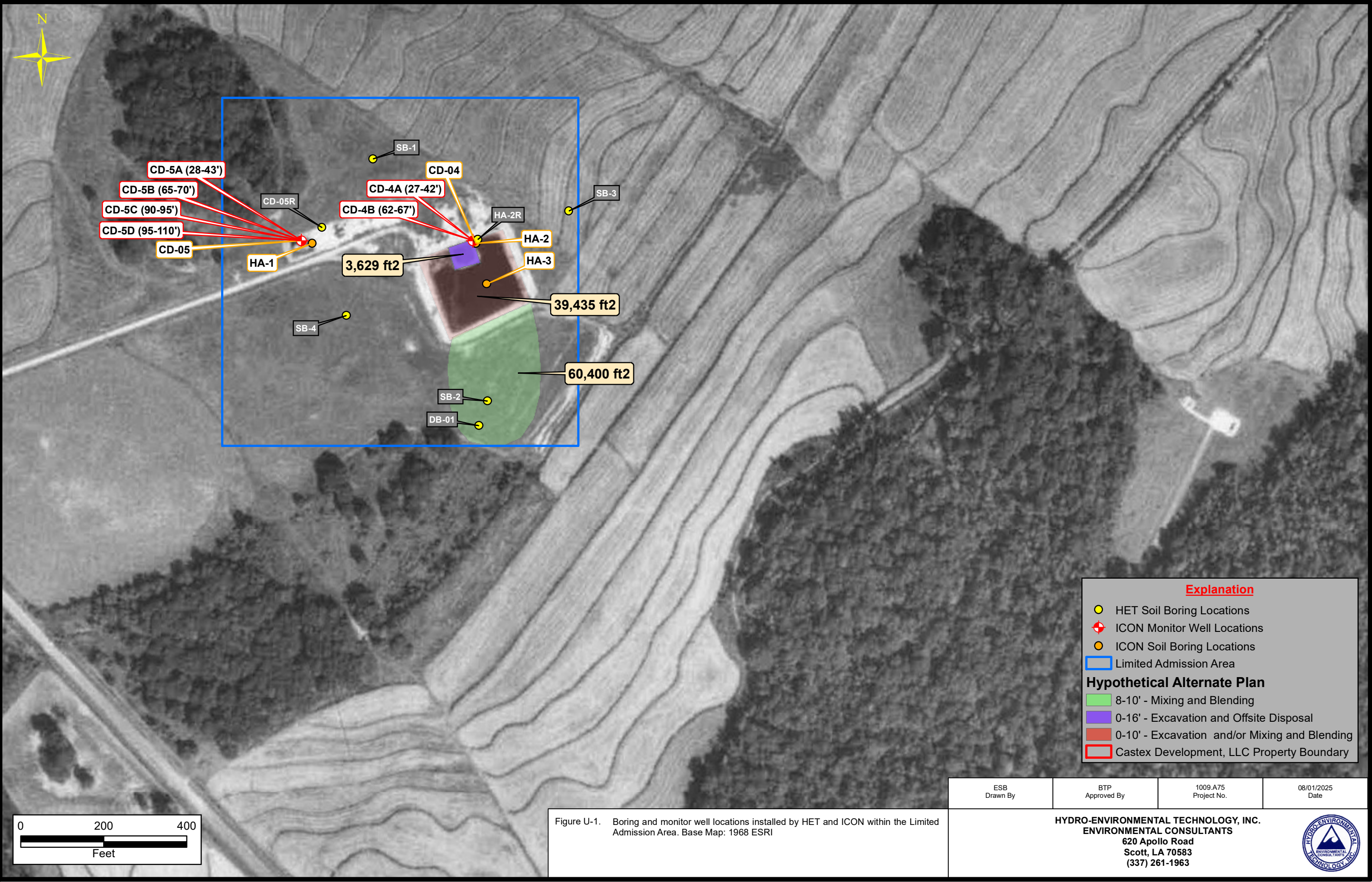
Stewart L. Stover, Jr.
Stewart L. Stover, Jr., P.G. (LA#440)
Director



MLG/CEC/BTP/SLS /eop

APPENDIX A

FIGURE



APPENDIX B
COST ESTIMATE

Alternate Plan Option 1 - Remedial Cost Estimate

I. Project Planning & Logistics



Planning, Scheduling, Logistics, Safety Preparation

Item	Description	Unit Cost	Quantity	Cost	Source
Principal Environmental Scientist	Remedial Planning; Coordination/Planning/Scheduling with subcontractors	\$180	30	\$5,400	HET Hourly Rates
Project Manager	Remedial Planning; Coordination/Planning/Scheduling with subcontractors	\$140	30	\$4,200	HET Hourly Rates
GIS Cartographer	Remedial Planning; Coordination/Planning/Scheduling with subcontractors	\$70	8	\$560	HET Hourly Rates
HSSE Director	Prepare and implement Safety Plans/Forms/Manuals/etc.	\$155	20	\$3,100	HET Hourly Rates
Subtotal:				\$13,260	Subtotal

Onsite Kickoff Meetings, Initial Site Setup, Line Locates

Item	Description	Unit Cost	Quantity	Cost	Source
Principal Environmental Scientist	Begin Remedial Activities, Initial Oversight, Observe Site Progress	\$180	12	\$2,160	HET Hourly Rates
Project Manager	Begin Remedial Activities, Initial Oversight, Observe Site Progress	\$140	12	\$1,680	HET Hourly Rates
Mileage, Per Diem, etc.	HET crew for one (1) day	\$216	1	\$216	HET Rates
Drone Rental, Pre-Remediation Photographs	\$125 per hour	\$125	1	\$125	HET Equipment Rates
EMC Third Party Line Locate	Subsurface survey @ \$3,500 per day	\$3,500	1	\$3,500	EMC - Subcontract Line Locate
5% MARKUP - Subcontracted labor (EMC)	Standard Subcontracted labor markup (5%)	\$175	1	\$175	Standard Mark-Up
Subtotal:				\$7,856	Subtotal

Item I Total:				\$21,116	Total Costs for Item I
---------------	--	--	--	----------	------------------------

II. Remedial Activities: Excavation

Implementation of Remedial Activities

Subcontractor Items	Description	Unit Cost	Quantity	Cost	Source
Mobilization/Demobilization	Transportation of equipment and personnel	\$6,000	1	\$6,000	Standard Industry Rates
Equipment and Manpower for Excavation	Heavy equipment and operators charged at day rate (Excavator, Dozer, etc.)	\$78,550	1	\$78,550	Standard Industry Rates
Transportation Impacted Materials	Dump trucks necessary for transportation of excavated materials charged by the load	\$750	130	\$97,500	Standard Industry Rates
Disposal Impacted Material	Disposal fees for off-site landfill and/or recycling charged by the ton	\$45	2580	\$116,100	Standard Industry Rates
Clean Backfill (including hauling)	Clean fill material obtained from offsite dirt pit charged by the cubic yard	\$18	1720	\$30,960	Standard Industry Rates
Clean Topsoil (including hauling)	Clean topsoil material obtained from offsite dirt pit charged by the cubic yard	\$27	780	\$21,060	Standard Industry Rates
Mats	Transportation, laying, rental, and removal of 15,000 square feet of wooden mats	\$30,000	1	\$30,000	Standard Industry Rates
Cooling Trailer	Equipment necessary for cooling of personnel	\$110	9	\$990	Standard Industry Rates
Subtotal:				\$381,160	Subtotal
5% MARKUP - Subcontracted Items				\$19,058	Mark-Up - Subcontracted Items

HET Supervision and Direction of Remedial Activities

Item	Description	Unit Cost	Quantity	Cost	Source
Principal Environmental Scientist	Conduct remedial oversight, coordination of subcontractors, implementation of remedial plan	\$180	20	\$3,600	HET Hourly Rates
Project Manager	Conduct remedial oversight, coordination of subcontractors, implementation of remedial plan	\$140	90	\$12,600	HET Hourly Rates
HSSE Coordinator	Safety Oversight, Control of Work	\$135	90	\$12,150	HET Hourly Rates
Environmental Scientist I	Conduct remedial manifesting	\$70	60	\$4,200	HET Hourly Rates
Mileage, Per Diem, etc.	HET personnel mileage and per diem	\$2,808	1	\$2,808	HET Rates
Drone Rental, Post Remediation Photographs	\$125 per hour for three (3), one (1) hour uses	\$125	3	\$375	HET Equipment Rates
Laboratory Analysis	Laboratory Analysis of Backfill Material Pit	\$522	1	\$522	Subcontract Laboratory Estimate
5% MARKUP - Subcontracted Laboratory Analyses - Waypoint Analytical	Standard Subcontracted lab markup (5%)	\$26	1	\$26	Standard Mark-Up
Portable Restroom and Hand Wash Station	Rental @ \$500 per month	\$500	1	\$500	Subcontractor Estimate
5% MARKUP - Subcontracted Materials (Event Solutions)	Standard Subcontracted Materials markup (5%)	\$25	1	\$25	Standard Mark-Up
Subtotal:				\$36,806	Subtotal
Item II Total:				\$437,024	Total Costs for Item II

Alternate Plan Option 1 - Remedial Cost Estimate

III. Remedial Activities: Land Treatment					
Implementation of Remedial Activities					
Subcontractor Items	Description	Unit Cost	Quantity	Cost	Source
Mobilization/Demobilization	Transportation of equipment and personnel	\$4,000	1	\$4,000	Standard Industry Rates
Equipment and Manpower for Land Treatment	Heavy equipment and operators charged at day rate (Excavator, Dozer, etc.)	\$195,800	1	\$195,800	Standard Industry Rates
Clean Topsoil (including hauling)	Clean topsoil material obtained from offsite dirt pit charged by the cubic yard	\$27	1730	\$46,710	Standard Industry Rates
Mats	Transportation, laying, rental, and removal of 15,000 square feet of wooden mats	\$15,000	1	\$15,000	Standard Industry Rates
Cooling Trailer	Equipment necessary for cooling of personnel	\$110	20	\$2,200	Standard Industry Rates
Subtotal:				\$263,710	Subtotal
5% MARKUP - Subcontracted Items				\$13,186	Mark-Up - Subcontracted Items
HET Supervision and Direction of Remedial Activities					
Item	Description	Unit Cost	Quantity	Cost	Source
Principal Environmental Scientist	Conduct remedial oversight, coordination of subcontractors, implementation of remedial plan	\$180	60	\$10,800	HET Hourly Rates
Project Manager	Conduct remedial oversight, coordination of subcontractors, implementation of remedial plan	\$140	240	\$33,600	HET Hourly Rates
HSSE Coordinator	Safety Oversight, Control of Work	\$135	240	\$32,400	HET Hourly Rates
Mileage, Per Diem, etc.	HET personnel mileage and per diem	\$5,832	1	\$5,832	HET Rates
Drone Rental, Post Remediation Photographs	\$125 per hour for eight (8), one (1) hour uses	\$125	8	\$1,000	HET Equipment Rates
Laboratory Analysis	Laboratory Analysis - Confirmation Samples	\$298	8	\$2,384	Subcontract Laboratory Estimate
5% MARKUP - Subcontracted Laboratory Analyses (Waypoint Analytical)	Standard Subcontracted lab markup (5%)	\$119	1	\$119	Standard Mark-Up
Subtotal:				\$86,135	Subtotal
Item III Total:				\$363,031	Total Cost for Item III
IV. Project Management, Regulatory Agency Negotiations, Site Closure Reporting					
Office Support During Field Activities, Regulatory Correspondence, Reporting					
Item	Description	Unit Cost	Quantity	Cost	Source
Principal Environmental Scientist	Project Overview and Management, Report Preparation	\$180	60	\$10,800	HET Hourly Rates
Principal Hydrogeologist	Project Management, Report Preparation	\$180	40	\$7,200	HET Hourly Rates
Hydrogeologist IV or Environmental Scientist IV	Project Management, Report Preparation	\$135	60	\$8,100	HET Hourly Rates
GIS Cartographer	GIS Mapping, Prepare Report Figures	\$70	60	\$4,200	HET Hourly Rates
Subtotal:				\$30,300	Subtotal
Item IV Total:				\$30,300	Total Costs for Item IV
TOTAL ESTIMATED COSTS					
Item				Cost	
I. Project Planning & Logistics				\$21,116.00	
II. Remedial Activities: Excavation				\$437,024.10	
III. Remedial Activities: Land Treatment				\$363,030.70	
IV. Project Management, Regulatory Agency Negotiations, Site Closure Reporting				\$30,300.00	
TOTAL ESTIMATED COSTS				\$851,470.80	TOTAL ESTIMATED COSTS

8/1/2025

Alternate Plan Option 2 - Remedial Cost Estimate

I. Project Planning & Logistics



Planning, Scheduling, Logistics, Safety Preparation

Item	Description	Unit Cost	Quantity	Cost	Source
Principal Environmental Scientist	Remedial Planning; Coordination/Planning/Scheduling with subcontractors	\$180	30	\$5,400	HET Hourly Rates
Project Manager	Remedial Planning; Coordination/Planning/Scheduling with subcontractors	\$140	30	\$4,200	HET Hourly Rates
GIS Cartographer	Remedial Planning; Coordination/Planning/Scheduling with subcontractors	\$70	8	\$560	HET Hourly Rates
HSSE Director	Prepare and implement Safety Plans/Forms/Manuals/etc.	\$155	20	\$3,100	HET Hourly Rates
Subtotal:				\$13,260	Subtotal

Onsite Kickoff Meetings, Initial Site Setup, Line Locates

Item	Description	Unit Cost	Quantity	Cost	Source
Principal Environmental Scientist	Begin Remedial Activities, Initial Oversight, Observe Site Progress	\$180	12	\$2,160	HET Hourly Rates
Project Manager	Begin Remedial Activities, Initial Oversight, Observe Site Progress	\$140	12	\$1,680	HET Hourly Rates
Mileage, Per Diem, etc.	HET crew for one (1) day	\$216	1	\$216	HET Rates
Drone Rental, Pre-Remediation Photographs	\$125 per hour	\$125	1	\$125	HET Equipment Rates
EMC Third Party Line Locate	Subsurface survey @ \$3,500 per day	\$3,500	1	\$3,500	EMC - Subcontract Line Locate
5% MARKUP - Subcontracted labor (EMC)	Standard Subcontracted labor markup (5%)	\$175	1	\$175	Standard Mark-Up
Subtotal:				\$7,856	Subtotal

Item I Total:				\$21,116	Total Costs for Item I
---------------	--	--	--	----------	------------------------

II. Remedial Activities: Excavation

Implementation of Remedial Activities

Subcontractor Items	Description	Unit Cost	Quantity	Cost	Source
Mobilization/Demobilization	Transportation of equipment and personnel	\$6,000	1	\$6,000	Standard Industry Rates
Equipment and Manpower for Excavation	Heavy equipment and operators charged at day rate (Excavator, Dozer, etc.)	\$508,150	1	\$508,150	Standard Industry Rates
Transportation Impacted Materials	Dump trucks necessary for transportation of excavated materials charged by the load	\$750	1006	\$754,500	Standard Industry Rates
Disposal Impacted Material	Disposal fees for off-site landfill and/or recycling charged by the ton	\$45	20105	\$904,725	Standard Industry Rates
Clean Backfill (including hauling)	Clean fill material obtained from offsite dirt pit charged by the cubic yard	\$18	13270	\$238,860	Standard Industry Rates
Clean Topsoil (including hauling)	Clean topsoil material obtained from offsite dirt pit charged by the cubic yard	\$27	6730	\$181,710	Standard Industry Rates
Mats	Transportation, laying, rental, and removal of 15,000 square feet of wooden mats	\$30,000	1	\$30,000	Standard Industry Rates
Cooling Trailer	Equipment necessary for cooling of personnel	\$110	73	\$8,030	Standard Industry Rates
Subtotal:				\$2,631,975	Subtotal
5% MARKUP - Subcontracted Items				\$131,599	Mark-Up - Subcontracted Items

HET Supervision and Direction of Remedial Activities

Item	Description	Unit Cost	Quantity	Cost	Source
Principal Environmental Scientist	Conduct remedial oversight, coordination of subcontractors, implementation of remedial plan	\$180	140	\$25,200	HET Hourly Rates
Project Manager	Conduct remedial oversight, coordination of subcontractors, implementation of remedial plan	\$140	730	\$102,200	HET Hourly Rates
HSSE Coordinator	Safety Oversight, Control of Work	\$135	730	\$98,550	HET Hourly Rates
Environmental Scientist I	Conduct remedial manifesting	\$70	510	\$35,700	HET Hourly Rates
Mileage, Per Diem, etc.	HET personnel mileage and per diem	\$22,788	1	\$22,788	HET Rates
Drone Rental, Post Remediation Photographs	\$125 per hour for fifteen (15), one (1) hour uses	\$125	15	\$1,875	HET Equipment Rates
Laboratory Analysis	Laboratory Analysis of Backfill Material Pit	\$522	1	\$522	Subcontract Laboratory Estimate
5% MARKUP - Subcontracted Laboratory Analyses - Waypoint Analytical	Standard Subcontracted lab markup (5%)	\$26	1	\$26	Standard Mark-Up
Portable Restroom and Hand Wash Station	Rental @ \$500 per month	\$500	3	\$1,500	Subcontractor Estimate
5% MARKUP - Subcontracted Materials (Event Solutions)	Standard Subcontracted Materials markup (5%)	\$75	1	\$75	Standard Mark-Up
Subtotal:				\$288,436	Subtotal
Item II Total:				\$3,052,010	Total Costs for Item II

Alternate Plan Option 2 - Remedial Cost Estimate

III. Remedial Activities: Land Treatment					
Implementation of Remedial Activities					
Subcontractor Items	Description	Unit Cost	Quantity	Cost	Source
Mobilization/Demobilization	Transportation of equipment and personnel	\$4,000	1	\$4,000	Standard Industry Rates
Equipment and Manpower for Land Treatment	Heavy equipment and operators charged at day rate (Excavator, Dozer, etc.)	\$122,250	1	\$122,250	Standard Industry Rates
Clean Topsoil (including hauling)	Clean topsoil material obtained from offsite dirt pit charged by the cubic yard	\$27	1000	\$27,000	Standard Industry Rates
Mats	Transportation, laying, rental, and removal of 15,000 square feet of wooden mats	\$15,000	1	\$15,000	Standard Industry Rates
Cooling Trailer	Equipment necessary for cooling of personnel	\$110	15	\$1,650	Standard Industry Rates
Subtotal:				\$169,900	Subtotal
5% MARKUP - Subcontracted Items				\$8,495	Mark-Up - Subcontracted Items
HET Supervision and Direction of Remedial Activities					
Item	Description	Unit Cost	Quantity	Cost	Source
Principal Environmental Scientist	Conduct remedial oversight, coordination of subcontractors, implementation of remedial plan	\$180	30	\$5,400	HET Hourly Rates
Project Manager	Conduct remedial oversight, coordination of subcontractors, implementation of remedial plan	\$140	150	\$21,000	HET Hourly Rates
HSSE Coordinator	Safety Oversight, Control of Work	\$135	150	\$20,250	HET Hourly Rates
Mileage, Per Diem, etc.	HET personnel mileage and per diem	\$3,564	1	\$3,564	HET Rates
Drone Rental, Post Remediation Photographs	\$125 per hour for five (5), one (1) hour uses	\$125	5	\$625	HET Equipment Rates
Laboratory Analysis	Laboratory Analysis - Confirmation Samples	\$298	5	\$1,490	Subcontract Laboratory Estimate
5% MARKUP - Subcontracted Laboratory Analyses (Waypoint Analytical)	Standard Subcontracted lab markup (5%)	\$75	1	\$75	Standard Mark-Up
Subtotal:				\$52,404	Subtotal
Item III Total:				\$230,799	Total Cost for Item III
IV. Project Management, Regulatory Agency Negotiations, Site Closure Reporting					
Office Support During Field Activities, Regulatory Correspondence, Reporting					
Item	Description	Unit Cost	Quantity	Cost	Source
Principal Environmental Scientist	Project Overview and Management, Report Preparation	\$180	60	\$10,800	HET Hourly Rates
Principal Hydrogeologist	Project Management, Report Preparation	\$180	40	\$7,200	HET Hourly Rates
Hydrogeologist IV or Environmental Scientist IV	Project Management, Report Preparation	\$135	60	\$8,100	HET Hourly Rates
GIS Cartographer	GIS Mapping, Prepare Report Figures	\$70	60	\$4,200	HET Hourly Rates
Subtotal:				\$30,300	Subtotal
Item IV Total:				\$30,300	Total Costs for Item IV
TOTAL ESTIMATED COSTS					
Item				Cost	
I. Project Planning & Logistics				\$21,116.00	
II. Remedial Activities: Excavation				\$3,052,009.85	
III. Remedial Activities: Land Treatment				\$230,798.50	
IV. Project Management, Regulatory Agency Negotiations, Site Closure Reporting				\$30,300.00	
TOTAL ESTIMATED COSTS				\$3,334,224.35	TOTAL ESTIMATED COSTS