

**From the La. Department of
Natural Resources (DNR)**



Contents

Greetings from DNR Assistant Secretary Keith Lovell	1
Implementation of Louisiana's Updated Coastal Zone Boundary	2
Updates from the Office of Coastal Management's Permits Section	4
Mitigation Section's Program Updates	5
OCM Announces Streamlined Procedures for the Review of Federal Financial Assistance Awards for Consistency with the Louisiana Coastal Resources Program	5
Calcasieu Parish Conducts Tour of the Clear Marais Bank Protection Project along the Gulf Intracoastal Waterway	6
Gulf Coast Resilient Communities Program Meeting in New Orleans in April 2013	7
Meet your New LCP Staff Members in St. Tammany and Lafourche Parishes	8
Free Handbook Shows Homeowners How to Prepare for Hazards	9

Louisiana Local Coastal Programs' Outlook

**From Assistant Secretary Keith Lovell
Office of Coastal Management**



Greetings - Local Coastal Management Program Managers and Coastal Management Stakeholders-

The Office of Coastal Management (OCM) continues to improve the state's coastal management program by actively addressing issues that are important to local coastal program managers. We truly appreciate the support we have received from our local program partners with these efforts.

The Louisiana coastal zone inland boundary was redefined in the 2012 Legislative Session based upon the recommendations of the science-based report that was requested by the Coastal Protection and Restoration Authority. With the assistance of the local coastal programs, OCM staff conducted numerous public meetings and performed outreach efforts to educate the public on the implication of the coastal zone boundary change. This edition of the Local Coastal Program (LCP) newsletter provides information on a new web-based tool to aid users of coastal resources in determining whether a proposed project might be exempt from the Louisiana Coastal Resources Program (LCRP).



OCM continues to streamline and improve our coastal use permitting process and is implementing mitigation program rule revisions. Updates on these changes are outlined in this newsletter. Links to some of the many guidance documents and support tools that OCM has available on our web site to assist LCPs in program operations are also included.

As you are aware, federal agencies are required to ensure that their activities are consistent with federally approved state coastal management programs. OCM reviews federal activities for consistency with the LCRP. OCM recently streamlined its federal financial assistance review process. Changes to the process are detailed in this edition.

Also included in this edition is news about current Calcasieu Parish coastal restoration efforts, as well as an update on OCM's coastal resiliency facilitation efforts in partnership with other local, state and national stakeholders.

I hope that you find the information in this newsletter useful to your program. Please send any questions, comments or other topics that you would like to see highlighted in future editions to our local coastal program staff. As always, know that the staff of OCM is ready to assist you with all of your coastal management needs. Sincerely,



*Keith Lovell, Assistant Secretary
Louisiana Department of Natural Resources*



Implementation of Louisiana's Updated Coastal Zone Boundary by Dave Frugé and Ed Britton, OCM

June 7, 2013 marked the first anniversary of Governor Jindal's signing of Act 588, which updated Louisiana's coastal zone boundary per the recommendations of a science-based study required by the Louisiana legislature. That boundary change increased Louisiana's coastal zone area by a net 1887 square miles, and helped ensure consistency of permitted activities with Louisiana's Comprehensive Master Plan for a Sustainable Coast. Act 588 did not establish new regulations or exemptions; it merely applied the pre-existing program to a shifted coastal area.

Act 588 increased the coastal zone area in 8 parishes (Cameron, Calcasieu, Iberia, St. Martin, St. Mary, Terrebonne, Lafourche, and Assumption), and reduced it in two parishes (Tangipahoa and Livingston); the boundary did not change in the remaining 10 coastal parishes.

OCM held four public outreach meetings to present these changes in and near the areas newly brought into the coastal zone. The meetings were held in June and July of 2012 in Thibodaux, Houma, Patterson, and Lake Charles. OCM staff also coordinated with Assumption Parish officials, and later made presentations to the Louisiana Floodplain Management Association, the Barataria-Terrebonne National Estuary Program Management Conference, and the Louisiana Transportation Conference. Coastal parish personnel were extremely helpful in outreach efforts related to the boundary changes.

OCM staff assisted the Calcasieu, Cameron, Lafourche and Terrebonne Parish governments with the Environmental Management Unit (EMU) revisions for those parishes' Local Coastal Management Programs related to the coastal zone boundary changes. OCM staff provided cartographic and GIS resources to the parishes regarding their existing EMU boundaries and fastlands, and continues to assist those parishes with incorporating these changes into their state and federally approved local coastal management programs.

(continued next page)

Implementation of Louisiana's Updated Coastal Zone Boundary (continued from page 2)

An electronic version of the new coastal zone boundary map was posted on OCM's website on September 12, 2012. Printed maps of the updated coastal zone were made available beginning in November 2012. Act 588 also required DNR to maintain maps showing those areas in the coastal zone determined by DNR to be a fastland or above the 5-foot contour. Those maps were to be made accessible to the public for comparison to proposed project footprints, thereby helping applicants to determine if their proposed activity is exempt from coastal use permitting.

DNR posted data layers for fastlands and lands above the 5-foot contour on its SONRIS website in September 2012. Areas shown as being above the 5-foot contour were based on USGS and other published map data which may contain a variety of margins of error. DNR only depicted those areas that are shown to be at least above 7 feet, to provide a conservative margin of error.

On May 1, 2013 DNR announced in a Coast-It Note that DNR's Information Technology Division (GIS Section) and OCM had developed a web-based tool to aid users of coastal resources in determining whether a proposed project might be exempt from the Louisiana Coastal Resources Program and would thus not require a Coastal Use Permit. This tool incorporates the same data that DNR uses to evaluate whether a project is within a fastland or above the 5-foot contour, as well as information on the location of special features such as salt domes and cheniers (impacts to special features require a Coastal Use Permit). By using this tool, members of the public can verify that their project is in an area that has been determined by OCM to be in a fastland or above the 5-foot contour.

The web-based tool and instructions are now available online on the DNR-OCM website at <http://sonris-www.dnr.state.la.us/gis/Permit/>. DNR has made every reasonable attempt to accurately portray fastland areas and areas above the 5-foot contour and to keep this information up to date; however, this tool and associated maps and data layers will be modified or otherwise updated as new information and data become available. We encourage users to utilize this tool to reduce the need for unnecessary permit applications, but also encourage any party that is not comfortable with making such self-determinations to submit an application through the online permit system.

More information on Louisiana's new coastal zone boundary is found on the OCM website at:

<http://dnr.louisiana.gov/index.cfm?md=pagebuilder&tmp=home&pid=928>



Updates from the Office of Coastal Management's Permits Section by Christine Charrier and Sara Krupa, OCM

The Permits Section has completed revising the process and documents related to request and review of needs, alternatives and justification (NAJ) for Coastal Use Permit applications. OCM replaced the subdivision and marina packets used as one-size-fits-all NAJ guides with tailored guides focused on many different types of coastal uses. The objective of modifying the NAJ process was to develop a tiered approach for the application's submission requirements and OCM's project analysis, such that small, relatively insignificant developments do not require the same level of alternatives and justification details that larger developments require.

The categories of uses for which guides have been written are:

- Residential Subdivisions
- Marinas
- Commercial Developments
- Industrial Developments
- Port Developments
- Utilities
- Levees
- Drainage Projects
- Transportation Projects
- Recreational Projects
- Oil and Gas Activities
- Pipelines

The guides were designed to be used by both OCM and LCP Permit Analysts when crafting information requests and by applicants when responding to those requests and will make the process more predictable and consistent. The new guides are being utilized and are proving to be quite effective in documenting and evaluating proposed coastal uses. During the initial usage phase, the documents are being reviewed for effectiveness and clarity, with needed changes being noted where necessary. After this initial adaptive management phase is complete the guides will be modified as needed. The guides can be found on our website:

<http://dnr.louisiana.gov/index.cfm?md=pagebuilder&tmp=home&pid=93>

Please feel free to use them during your review. If you have any comments or suggestions for improvement, please address them to Christine Charrier at christine.charrier@la.gov. OCM welcomes your input.

The Coastal User's Guide, which provides concise and up-to-date information on how to apply for a coastal use permit, has been updated and is now available on OCM's website: http://data.dnr.louisiana.gov/ABP-GIS/ABPstatusreport/FinalUsersGuide_2013.pdf

OCM has executed a new General Permit. General Permit 27 (GP-27) offers expedited review of routine port-related maintenance activities. This guide is updated periodically as legislation and regulations change, in an effort to provide essential information about the Louisiana Coastal Resources Program to the public:

<http://dnr.louisiana.gov/index.cfm?md=pagebuilder&tmp=home&pid=728>

DNR's Information Technology Division (GIS Section) and OCM have developed a web-based tool to aid users of coastal resources in determining whether a project might be exempt from the Louisiana Coastal Resources Program and would thus not require a Coastal Use Permit. This tool incorporates the same data that DNR uses to evaluate whether a project is within a fastland or above the 5-foot contour, as well as information on the location of special features such as salt domes and cheniers. Impacts to special features require a Coastal Use Permit. The tool allows coastal users to input location information and size of the project area for activities in the Coastal Zone, and determine if their project is located in an area that has been determined by OCM to be in a fastland or above the 5-foot contour or if a Coastal Use Permit is required. OCM would like to note that although a Coastal Use Permit may not be required, OCM advises users to contact the Regulatory Branch at the U.S. Army Corps of Engineers to ensure compliance with their program. The web-based tool along with detailed instructions is now available online on the OCM website at:

<http://sonris-www.dnr.state.la.us/gis/Permit/>.

State Mitigation Program Updates by Kelley Templet, OCM

In March of 2013, the OCM initiated rulemaking procedures to promulgate revised regulations that govern the compensatory mitigation options and the review of mitigation banks. In an effort to implement the codification of existing mitigation bank review practices and procedures, rule revisions are essential and will assist in: streamlining the present mitigation bank review process; making mitigation bank review more consistent with federal agencies' review process; making the state review process of mitigation bank proposals less burdensome on mitigation bank sponsors; and reducing the time required for mitigation bank proposal review. Once approved, the new regulations will go into effect on June 20, 2013, when they are published in the Louisiana Register. More of OCM's mitigation regulations will be forthcoming to the LCPs over the next few months.

OCM is also currently providing funding for three marsh creation projects: The Catfish Lake project, currently under construction, is being constructed in partnership with the South Lafourche Levee District in Lafourche Parish, and is funded with state beneficial use funds; the CWPPRA and NRDA early restoration Lake Hermitage project, currently under construction in Plaquemines Parish, will use state in-lieu fee funds to create approximately 19 additional acres of brackish/intermediate marsh; and the state surplus-funded Freshwater Bayou Marsh Creation project in Vermilion Parish will use state in-lieu fee and beneficial use funds to create approximately 15 additional acres of fresh/intermediate marsh.

OCM Announces Revised Procedures for the Review of Federal Financial Assistance Awards for Consistency with the Louisiana Coastal Resources Program by Jeff Harris, OCM

A number of federal and state agencies provide financial assistance to state and local governments, non-governmental organizations, businesses, and individuals in Louisiana. As part of the award process, many of these agencies require the applicant to coordinate with the Louisiana Coastal Zone Management program. The Office of Coastal Management (OCM) has streamlined its financial assistance review procedure to ensure response to all requests in a timely and appropriate manner. On October 1, 2012, the coordination of applications for federal financial assistance changed to follow the procedures outlined as follows:

Consistency review for Federal Assistance

Federal regulations at 15 CFR §930.90 et seq. require state and local government bodies applying for federal financial assistance (grants, loans, guarantees, insurance, contractual arrangements, or other form of financial aid) to submit a request for Consistency review of that assistance to OCM. Since the inception of the Louisiana Coastal Resources Program in 1980, OCM has never found that financial assistance for a proposed project would be inconsistent with the state Coastal Zone Management program. The Office of Coastal Management has therefore issued a letter of general consistency concurrence, which serves as formal notification that, as of October 1, 2012, the granting of any financial assistance as defined at 15 CFR §930.91, is fully consistent with the Louisiana Coastal Resources Program. Questions concerning these procedures should be addressed to Mr. Jeff Harris of the Consistency Section at (225) 342-7949 or via e-mail to Jeff.Harris@LA.gov.

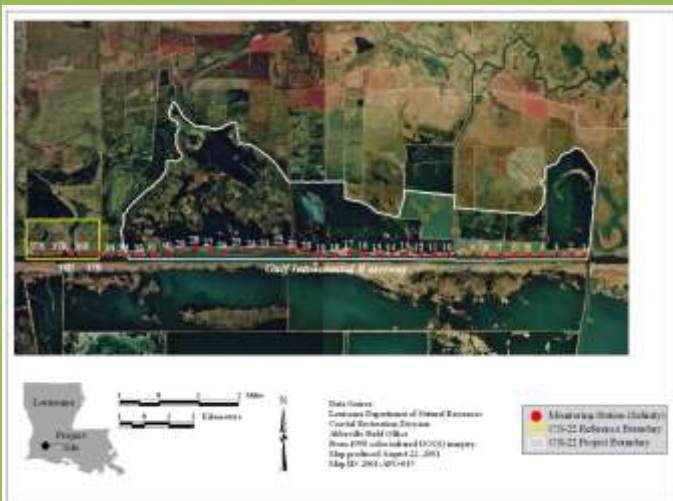


Calcasieu Parish Conducts Tour of the Clear Marais Bank Protection Project along the Gulf Intracoastal Waterway by Laurie Cormier, Calcasieu Parish

The Calcasieu Parish Police Jury hosted members of the media on a boat tour visiting the Clear Marais Bank along the Gulf Intracoastal Waterway on May 1, 2013. The Clear Marais wetlands provide important nursery habitat for estuarine-dependent fish and shellfish species, wintering habitat for migratory waterfowl, and foraging habitat for wading birds and other valuable wetland species. This area is vitally important to the wildlife and fisheries communities in the Calcasieu/Sabine Basin. The proposed project would be an extension to the Clear Marais Bank Protection Project; which was funded by the Coastal Wetlands Planning, Protection, and Restoration Act; and was completed in March of 1997.

The original project consisted of the construction of an approximate 35,000-foot limestone breakwater east of the current project enhancement which protects approximately 4,500 acres. The limestone breakwater was completed 50 feet from, and parallel to, the northern bank of the GIWW in 3-4 feet of water to prevent the continued erosion of the management levee and the encroachment of the GIWW into the adjacent marsh area to the north.

The goal of this project enhancement effort is to extend the riprap structure approximately 4,500 feet along the Clear Marais Bank of the GIWW. The shoreline erosion in this area has been documented to have damage rates as wide as 16 feet annually. As a result, erosion of the north bank of the GIWW threatens not only the water management levees to the north, but also the marshes protected by the levees. The water management area protected by this project includes 500 acres of fresh marsh and 25 acres of open water. Implementation of the project would prevent further erosion along the north bank of the GIWW. For additional information on this project and other Calcasieu Parish coastal issues please contact Laurie Cormier, Calcasieu Parish Coastal Management Program Administrator at 337-721-3645.



Gulf Coast Resilient Communities Program Meeting in New Orleans in April 2013 by Rebecca Webber, ISC

Teams from six Gulf Coastal Communities met in New Orleans April 15-17 for the first of two peer-learning workshops for the Gulf Coast Resilient Communities Program. This program was led by the Institute for Sustainable Communities (ISC), in partnership with the Mississippi-Alabama Sea Grant Consortium and is designed to aid Gulf Coast communities to develop and advance implementation of community resilience plans and initiatives.

The six teams: Pensacola, FL; Perdido Beach, AL; Biloxi, MS; Moss Point, MS; Iowa, LA; and the Chenier Plains Parishes, LA; spent three days sharing their existing resilience plans and their successes and challenges around community resilience with their peers, learning from one another and a resource team of experts in community resilience from across the Gulf Coast region. Resource team members came to this first workshop from the Southern Climate Impacts Planning Program, IMSG / NOAA Gulf Coast Services Center, the Louisiana Sea Grant Law & Policy Program, the Center for Planning Excellence, Louisiana State University's Coastal Sustainability Studio, the University of New Orleans, State of Louisiana Office of Community Development, and the Louisiana Audubon Society. The two Louisiana teams were assisted by Jon Truxillo, Coastal Scientist with the Louisiana Department of Natural Resources, as Science Advisor.

By the end of the April workshop, each team had developed a six-month action plan to implement new tools, strategies and approaches learned at the workshop and accelerate and improve existing practices. Selected teams will receive technical assistance throughout the summer, before all six communities reconvene for the second peer-learning workshop in September, where they will share lessons learned from their implementation activities. For additional information about this workshop please contact: Jon A. Truxillo, Coastal Resources Scientist, 225.342.3394, jon.truxillo@la.gov



Meet your New LCP Staff Members in St. Tammany and Lafourche Parishes by Jon Truxillo, OCM

Dan Bond was born in Hammond and grew up in St. Tammany Parish. He received a B.S. in Biology in 2001 from the University of Louisiana-Lafayette. Dan worked at UNO under Dr. Denise Reed in the Coastal Geomorphology Lab, then returned to UL-L and received a M.S. in Biology in 2006 under the direction of Dr. Robert Twilley. Next he worked at LSU's School of the Coast and Environment in the Wetland Biogeochemistry Institute as a research associate. In 2008, Dan was ready to move back to St. Tammany for a job with the Parish Government as an Environmental Specialist.

In his position with the Parish, he is involved in the review of residential and commercial building permits, floodplain management issues, complaint response, field investigations and site evaluations, code enforcement, and environmental permitting issues. Dan manages permit processing and the day to day operations of the Local Coastal Program. He is also involved in coastal/wetland restoration efforts throughout the parish. Dan enjoys working to restore and protect natural areas in St. Tammany Parish. In his spare time he is a local musician and enjoys playing the guitar around town. Dan and his wife, Jo, have a 17 month-old son, Alex, and are expecting their second child in June.

Amanda Penick is from Luling, Louisiana, and after graduating from Hahnville High School in 2005, she moved to Baton Rouge to attend LSU. While there, Amanda worked at the Southern Regional Climate Center and graduated with a B.S. in Physical Geography in 2009. She then pursued her Masters of Urban and Regional Planning with a focus in Hazard Mitigation at the University of New Orleans and focused her research on the historical review of the Community Rating System in Jefferson Parish. While at UNO, Amanda also worked as a graduate research assistant at the Center for Hazards Assessment, Response and Technology (CHART).

After surviving graduate school, Amanda found a job in Lafourche Parish as their Coastal Zone Management Permit Coordinator and is involved with reviewing Coastal Use Permits, as well as administering the Lafourche Local Coastal Program. When she is able, Amanda also involves herself with the coastal/wetland restoration efforts in the parish, and will also be involved in helping the Parish enter the Flood Insurance Community Rating System Program. After work, Amanda enjoys cooking, playing with her two dogs, and planning her upcoming wedding.



Dan Bond, Environmental Specialist
Department of Engineering, St. Tammany Parish Government



Amanda Penick, Permit Coordinator
Office of Coastal Zone Management, Lafourche Parish Government

Free Handbook Shows Homeowners How to Prepare for Hazards by Melisa Trosclair-Daigle, LSGP

With hurricane season underway, now is the time homeowners should start making necessary preparations to protect their homes and loved ones. Through the new Louisiana Homeowners Handbook to Prepare for Natural Hazards, residents of Louisiana have a useful resource at their fingertips as they begin readying their families for natural disasters.

There are tips and information specific to Louisiana residents for preparing evacuation plans and kits, construction practices, retrofitting, shutter styles, insurance information and emergency contact numbers. Basically everything a homeowner needs to know in coastal Louisiana to be best prepared for coastal hazards.

The handbook is available in PDF format at www.lsu.edu/sglegal/pubs/handbook.htm as a free download. Free hard copies will be available at various locations throughout coastal Louisiana, or the book can be ordered for \$5 – to cover postage and handling – by emailing Jessica Schexnayder at jsche15@lsu.edu.

Louisiana Sea Grant Law and Policy Program (LSGLPP) produced the handbook with the help of other state, regional and national organizations. The handbook was funded through a program of the Gulf of Mexico Alliance (GOMA) which aims to see each Gulf state prepare its own guidelines for coastal residents in their state.

Since its establishment in 1968, Louisiana Sea Grant has worked to promote stewardship of the state's coastal resources through a combination of research, education and outreach programs critical to the cultural, economic and environmental health of Louisiana's coastal zone. Louisiana Sea Grant, based at LSU, is part of the National Sea Grant College Program, a network of 33 university-based programs in each of the U.S. coastal and Great Lakes states and Puerto Rico.

News organizations wanting a copy of the video news release can contact Roy Kron at rkron@lsu.edu. www.youtube.com/watch?v=tII3J_vusOA&feature=youtu.be

Hurricane Season starts June 1st
GET A GAME PLAN

Step 1

Put Together an Emergency Kit

Essential Supplies
Important Papers

Step 2

Make Preparations

Personal Evacuation Plan
Protect Your Home
Protect Your Valuables
Prepare for Electrical Outages
Special Medical Needs
Sheltering Your Pets

Step 3

Stay Informed

Weather & Emergency Alerts Sign Up
Follow us on Twitter
Connect with us on Facebook
Subscribe to our YouTube channel

On the web:

<http://www.getagameplan.org/>

Louisiana Department of Natural Resources

Prepared by Office of Coastal Management
Interagency Affairs and Field Services Division
225.342.7591: 800.267.4019
617 North Third Street
LaSalle Building, Baton Rouge, Louisiana 70802

For additional information about this newsletter or for content submission please contact: Jon A. Truxillo, Coastal Resources Scientist, 225.342.3394, jon.truxillo@la.gov

Find us on the Web:
<http://dnr.louisiana.gov/>

