

TRACT 43316 - Portion of Blocks 16, 35, and 36, Eugene Island Area, Revised, St. Mary Parish, Louisiana

The beds and bottoms of all water bodies belonging to the State of Louisiana located in Blocks 16, 35, and 36, Eugene Island Area, Revised, together with any present lands formed by accretion to the shoreline or islands formed therein, located in St. Mary Parish, Louisiana, owned by and not presently under mineral lease as of July 10, 2013, from the State of Louisiana, the geographical area of which is more fully described as follows: Beginning at a point on the East boundary of State Lease No. 19924 and Southwest corner of State Lease No. 19720 having Coordinates of X = 1,974,974.00 and Y = 242,974.00; thence along the boundary of said State Lease No. 19720 the following courses: North 89 degrees 11 minutes 44 seconds East 3,276.32 feet to a point having Coordinates of X = 1,978,250.00 and Y = 243,020.00, North 03 degrees 26 minutes 33 seconds West 3,097.59 feet to a point having Coordinates of X = 1,978,064.00 and Y = 246,112.00, North 57 degrees 03 minutes 33 seconds West 3,350.68 feet to a point having Coordinates of X = 1,975,252.00 and Y = 247,934.00 and South 89 degrees 58 minutes 43 seconds West 5,296.32 feet to its Northwest corner having Coordinates of X = 1,969,955.68 and Y = 247,932.02; thence North 01 degrees 23 minutes 10 seconds West 2,211.46 feet to a point on the South boundary of the Atchafalaya Delta Wildlife Management Area having Coordinates of X = 1,969,902.19 and Y = 250,142.84; thence Southeasterly, on a straight line, approximately 17,822.86 feet along the South boundary of said Atchafalaya Delta Wildlife Management Area to a point having Coordinates of X = 1,986,728.66 and Y = 244,226.72; thence South 01 degrees 28 minutes 52 seconds East approximately 10,737.96 feet to a point having Coordinates of X = 1,987,006.20 and Y = 233,532.35; thence North 58 degrees 34 minutes 28 seconds West 14,121.97 feet to the Southeast corner of said State Lease No. 19924 having Coordinates of X = 1,974,955.68 and Y = 240,895.42; thence North 2,078.32 feet along the East boundary of said State Lease No. 19924 to a point having Coordinates of X = 1,974,955.68 and Y = 242,973.74; thence North 89 degrees 11 minutes 44 seconds East 18.32 feet along the boundary of said State Lease No. 19924 to the point of beginning, **LESS AND EXCEPT** that portion, if any, of the above described tract which may lie inside of the boundary of the Atchafalaya Delta Wildlife Management Area, containing approximately **2,324.96 acres**, all as more particularly outlined on a plat on file in the Office of Mineral Resources, Department of Natural Resources. All bearings, distances and coordinates are based on Louisiana Coordinate System of 1927, (North or South Zone).

NOTE: The above description of the Tract nominated for lease has been provided and corrected, where required, exclusively by the nomination party. Any mineral lease selected from this Tract and awarded by the Louisiana State Mineral and Energy Board shall be without warranty of any kind, either express, implied, or statutory, including, but not limited to, the implied warranties of merchantability and fitness for a particular purpose. Should the mineral lease awarded by the Louisiana State Mineral and Energy Board be subsequently modified, cancelled or abrogated due to the existence of conflicting leases, operating agreements, private claims

or other future obligations or conditions which may affect all or any portion of the leased Tract, it shall not relieve the Lessee of the obligation to pay any bonus due thereon to the Louisiana State Mineral and Energy Board, nor shall the Louisiana State Mineral and Energy Board be obligated to refund any consideration paid by the Lessor prior to such modification, cancellation, or abrogation, including, but not limited to, bonuses, rentals and royalties.

NOTE: The above described tract may be in the vicinity of existing shell reefs where drilling and dredging operations must be conducted in strict conformity with the regulations adopted by the Louisiana Department of Wildlife and Fisheries and/or the U.S. Corps of Engineers, U.S. Army.

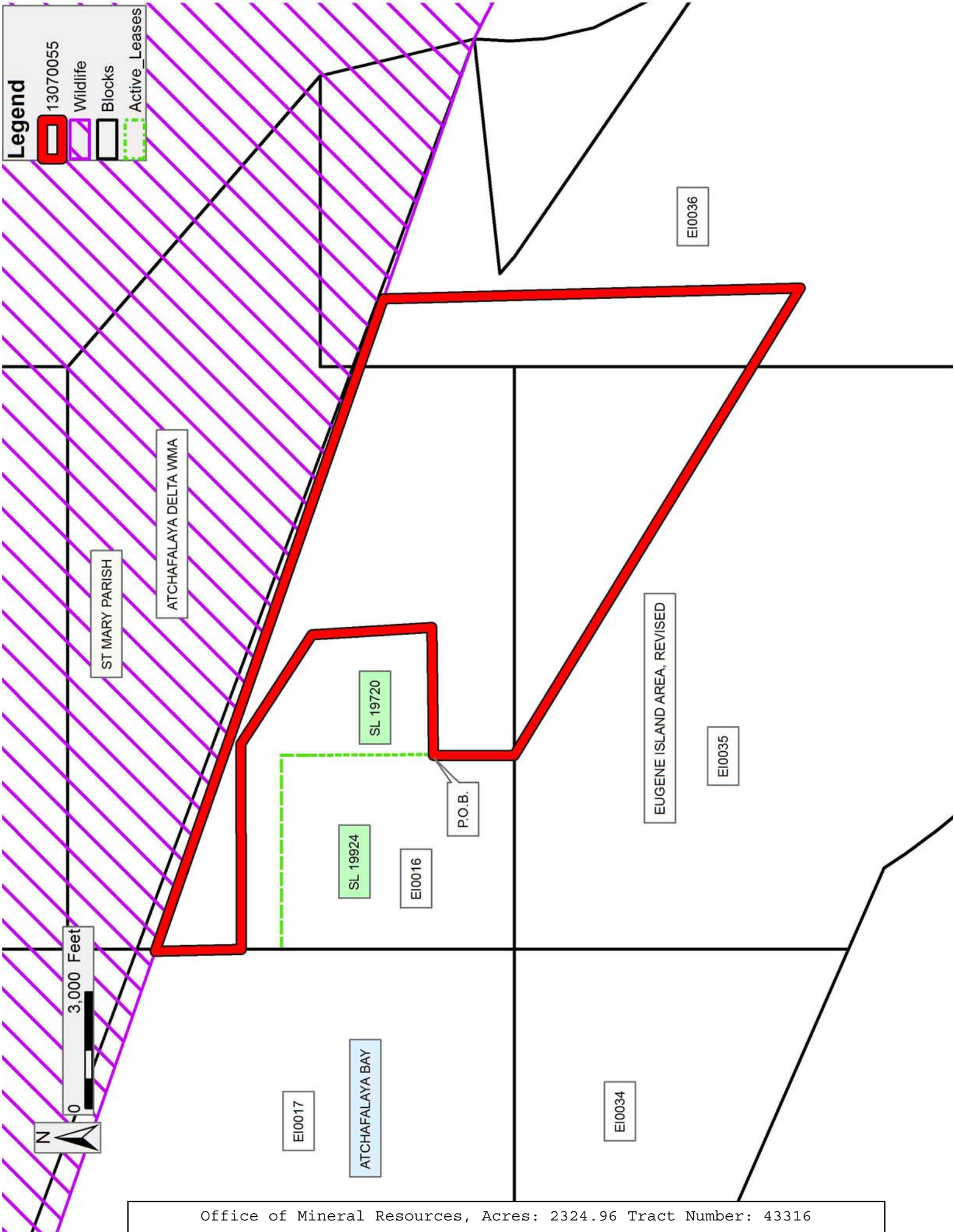
NOTE: The State of Louisiana does hereby reserve, and this lease shall be subject to, the imprescriptible right of surface use in the nature of a servitude in favor of the Department of Natural Resources, including its Offices and Commissions, for the sole purpose of implementing, constructing, servicing and maintaining approved coastal zone management and/or restoration projects. Utilization of any and all rights derived under this lease by the mineral lessee, its agents, successors or assigns, shall not interfere with nor hinder the reasonable surface use by the Department of Natural Resources, its Offices or Commissions, as herein above reserved.

NOTE: It appears, according to our records, that a portion of this Tract is located within the restrictive safety fairway area as set out by the Corps of Engineers, U.S. Army and/or the restrictive anchorage area as set out by the U.S. Coast Guard.

NOTE: This tract is located in an area designated by the Louisiana Legislature or the Wildlife and Fisheries Commission as a Public Oyster Seed Ground, Reservation, or area of Calcasieu or Sabine Lake. Proposed projects occurring in these areas will be evaluated on a case by case basis by Louisiana Department of Wildlife & Fisheries. Modifications to proposed project features including, but not limited to, access routes, well sites, flowlines, and appurtenant structures maybe required by the Louisiana Department of Wildlife and Fisheries. In addition, compensatory mitigation will be required to offset unavoidable habitat impacts.

Applicant: LESLIE M. COOPER

Bidder	Cash Payment	Price/ Acre	Rental	Oil	Gas	Other



TRACT 43317 - Portion of Blocks 17, 18, 33, and 34, Eugene Island Area, Revised, St. Mary Parish, Louisiana

The beds and bottoms of all water bodies belonging to the State of Louisiana located in Blocks 18, and 33, Eugene Island Area, Revised, together with any present lands formed by accretion to the shoreline or islands formed therein, located in St. Mary Parish, Louisiana, owned by and not presently under mineral lease as of July 10, 2013, from the State of Louisiana, the geographical area of which is more fully described as follows: Beginning at the Southwest corner of State Lease No. 1667, as amended, having Coordinates of X = 1,939,911.36 and Y = 247,079.31; thence East 7,511.08 feet and North 1,316.11 feet along the South and East boundaries of said State Lease No. 1667 to the Southwest corner of State Lease No. 1536, as amended, having Coordinates of X = 1,947,422.44 and Y = 248,395.42; thence along the boundaries of said State Lease No. 1536 the following courses: East 741.08 feet to a point having Coordinates of X = 1,948,163.52 and Y = 248,395.42, South 2,246.75 feet to a point having Coordinates of X = 1,948,163.52 and Y = 246,148.67, North 67 degrees 53 minutes 47 seconds East 481.90 feet to a point having Coordinates of X = 1,948,610.00 and Y = 246,330.00, South 67 degrees 45 minutes 04 seconds East 237.70 feet, North 87 degrees 03 minutes 52 seconds East 1,171.54 feet, North 84 degrees 52 minutes 19 seconds East 783.13 feet, North 79 degrees 06 minutes 52 seconds East 529.53 feet, North 72 degrees 28 minutes 28 seconds East 796.99 feet, North 67 degrees 53 minutes 26 seconds East 345.40 feet, North 64 degrees 29 minutes 10 seconds East 487.54 feet, North 51 degrees 54 minutes 40 seconds East 470.11 feet, North 43 degrees 21 minutes 48 seconds East 742.77 feet, North 34 degrees 17 minutes 13 seconds East 532.54 feet, and North 26 degrees 50 minutes 03 seconds East 952.58 feet to a point having Coordinates of X = 1,954,430.00 and Y = 249,170.00; thence East 1,586.07 feet to a point having Coordinates of X = 1,956,016.07 and Y = 249,170.00; thence South 10,787.79 feet to a point on the Three Mile Line, as decreed by the Supreme Court of the United States, as determined by a Special Master appointed therein, in litigation styled *United States v. State of Louisiana et al No. 9 Original*, in 1975, having Coordinates of X = 1,956,016.07 and Y = 238,382.20; thence Northwesterly on a straight line to a point having Coordinates of X = 1,939,911.36 and Y = 245,426.62; thence North 1,652.69 feet to the point of beginning, containing approximately **1,974.73 acres, LESS AND EXCEPT** that portion thereof, if any, lying seaward of the line three nautical miles from the coast line of Louisiana, as said three mile line has been decreed by the Supreme Court of the United States, as determined by a Special Master appointed therein, in litigation styled **United States v. State of Louisiana et al No. 9 Original**, in 1975, all as more particularly outlined on a plat in the Office of Mineral Resources, Department of Natural Resources. All bearings, distances and coordinates are based on the Louisiana Coordinate System of 1927, (South Zone).

NOTE: The above description of the Tract nominated for lease has been provided and corrected, where required, exclusively by the nomination party. Any mineral lease selected from this Tract and awarded by the

Louisiana State Mineral and Energy Board shall be without warranty of any kind, either express, implied, or statutory, including, but not limited to, the implied warranties of merchantability and fitness for a particular purpose. Should the mineral lease awarded by the Louisiana State Mineral and Energy Board be subsequently modified, cancelled or abrogated due to the existence of conflicting leases, operating agreements, private claims or other future obligations or conditions which may affect all or any portion of the leased Tract, it shall not relieve the Lessee of the obligation to pay any bonus due thereon to the Louisiana State Mineral and Energy Board, nor shall the Louisiana State Mineral and Energy Board be obligated to refund any consideration paid by the Lessor prior to such modification, cancellation, or abrogation, including, but not limited to, bonuses, rentals and royalties.

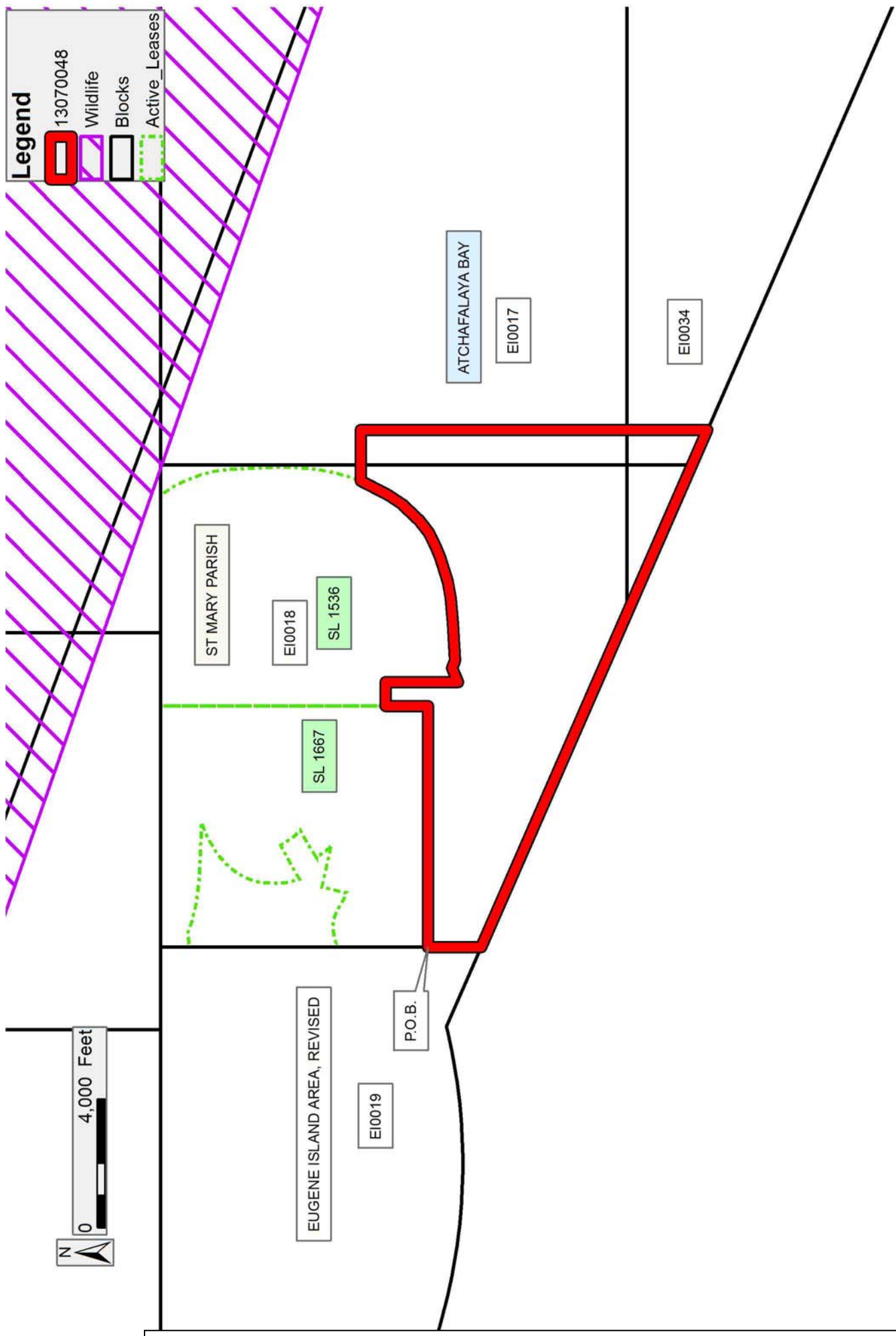
NOTE: The above described tract may be in the vicinity of existing shell reefs where drilling and dredging operations must be conducted in strict conformity with the regulations adopted by the Louisiana Department of Wildlife and Fisheries and/or the U.S. Corps of Engineers, U.S. Army.

NOTE: The State of Louisiana does hereby reserve, and this lease shall be subject to, the imprescriptible right of surface use in the nature of a servitude in favor of the Department of Natural Resources, including its Offices and Commissions, for the sole purpose of implementing, constructing, servicing and maintaining approved coastal zone management and/or restoration projects. Utilization of any and all rights derived under this lease by the mineral lessee, its agents, successors or assigns, shall not interfere with nor hinder the reasonable surface use by the Department of Natural Resources, its Offices or Commissions, as herein above reserved.

NOTE: This tract is located in an area designated by the Louisiana Legislature or the Wildlife and Fisheries Commission as a Public Oyster Seed Ground, Reservation, or area of Calcasieu or Sabine Lake. Proposed projects occurring in these areas will be evaluated on a case by case basis by Louisiana Department of Wildlife & Fisheries. Modifications to proposed project features including, but not limited to, access routes, well sites, flowlines, and appurtenant structures maybe required by the Louisiana Department of Wildlife and Fisheries. In addition, compensatory mitigation will be required to offset unavoidable habitat impacts.

Applicant: LESLIE M. COOPER

Bidder	Cash Payment	Price/ Acre	Rental	Oil	Gas	Other



Legend

13070048

Wildlife

Blocks

Active_Leases

0 4,000 Feet

TRACT 43318 - Portion of Blocks 17, and 34, Eugene Island Area, Revised, St. Mary Parish, Louisiana

The beds and bottoms of all water bodies belonging to the State of Louisiana located in Blocks 17, and 34, Eugene Island Area, Revised, together with any present lands formed by accretion to the shoreline or islands formed therein, located in St. Mary Parish, Louisiana, owned by and not presently under mineral lease as of July 10, 2013, from the State of Louisiana, the geographical area of which is more fully described as follows: Beginning at a point having Coordinates of X = 1,956,016.07 and Y = 246,619.90; thence South 89 degrees 45 minutes 40 seconds East 4,232.23 feet to a point having Coordinates of X = 1,960,248.27 and Y = 246,602.26; thence South 88 degrees 38 minutes 56 seconds East 3,986.36 feet to a point having Coordinates of X = 1,964,233.52 and Y = 246,508.26; thence South 3,712.84 feet to a point having Coordinates of X = 1,964,233.52 and Y = 242,795.42; thence South 71 degrees 37 minutes 54 seconds East 3,335.57 feet to a point having Coordinates of X = 1,967,399.14 and Y = 241,744.30; thence South 01 degrees 23 minutes 10 seconds East 8,432.89 feet to a point on the Three Mile Line, as decreed by the Supreme Court of the United States, as determined by a Special Master appointed therein, in litigation styled *United States v. State of Louisiana et al No. 9 Original*, in 1975, having Coordinates of X = 1,967,603.12 and Y = 233,313.87; thence Northwesterly on a straight line to a point having Coordinates of X = 1,956,016.07 and Y = 238,382.20; thence North 8,237.69 feet to the point of beginning, containing approximately **2,499.87 acres, LESS AND EXCEPT** that portion thereof, if any, lying seaward of the line three nautical miles from the coast line of Louisiana, as said three mile line has been decreed by the Supreme Court of the United States, as determined by a Special Master appointed therein, in litigation styled **United States v. State of Louisiana et al No. 9 Original**, in 1975, all as more particularly outlined on a plat in the Office of Mineral Resources, Department of Natural Resources. All bearings, distances and coordinates are based on the Louisiana Coordinate System of 1927, (South Zone).

NOTE: The above description of the Tract nominated for lease has been provided and corrected, where required, exclusively by the nomination party. Any mineral lease selected from this Tract and awarded by the Louisiana State Mineral and Energy Board shall be without warranty of any kind, either express, implied, or statutory, including, but not limited to, the implied warranties of merchantability and fitness for a particular purpose. Should the mineral lease awarded by the Louisiana State Mineral and Energy Board be subsequently modified, cancelled or abrogated due to the existence of conflicting leases, operating agreements, private claims or other future obligations or conditions which may affect all or any portion of the leased Tract, it shall not relieve the Lessee of the obligation to pay any bonus due thereon to the Louisiana State Mineral and Energy Board, nor shall the Louisiana State Mineral and Energy Board be obligated to refund any consideration paid by the Lessor prior to such modification, cancellation, or abrogation, including, but not limited to, bonuses, rentals and royalties.

NOTE: The above described tract may be in the vicinity of existing shell reefs where drilling and dredging operations must be conducted in strict conformity with the regulations adopted by the Louisiana Department of Wildlife and Fisheries and/or the U.S. Corps of Engineers, U.S. Army.

NOTE: The State of Louisiana does hereby reserve, and this lease shall be subject to, the imprescriptible right of surface use in the nature of a servitude in favor of the Department of Natural Resources, including its Offices and Commissions, for the sole purpose of implementing, constructing, servicing and maintaining approved coastal zone management and/or restoration projects. Utilization of any and all rights derived under this lease by the mineral lessee, its agents, successors or assigns, shall not interfere with nor hinder the reasonable surface use by the Department of Natural Resources, its Offices or Commissions, as herein above reserved.

NOTE: It appears, according to our records, that a portion of this Tract is located within the restrictive safety fairway area as set out by the Corps of Engineers, U.S. Army and/or the restrictive anchorage area as set out by the U.S. Coast Guard.

NOTE: This tract is located in an area designated by the Louisiana Legislature or the Wildlife and Fisheries Commission as a Public Oyster Seed Ground, Reservation, or area of Calcasieu or Sabine Lake. Proposed projects occurring in these areas will be evaluated on a case by case basis by Louisiana Department of Wildlife & Fisheries. Modifications to proposed project features including, but not limited to, access routes, well sites, flowlines, and appurtenant structures maybe required by the Louisiana Department of Wildlife and Fisheries. In addition, compensatory mitigation will be required to offset unavoidable habitat impacts.

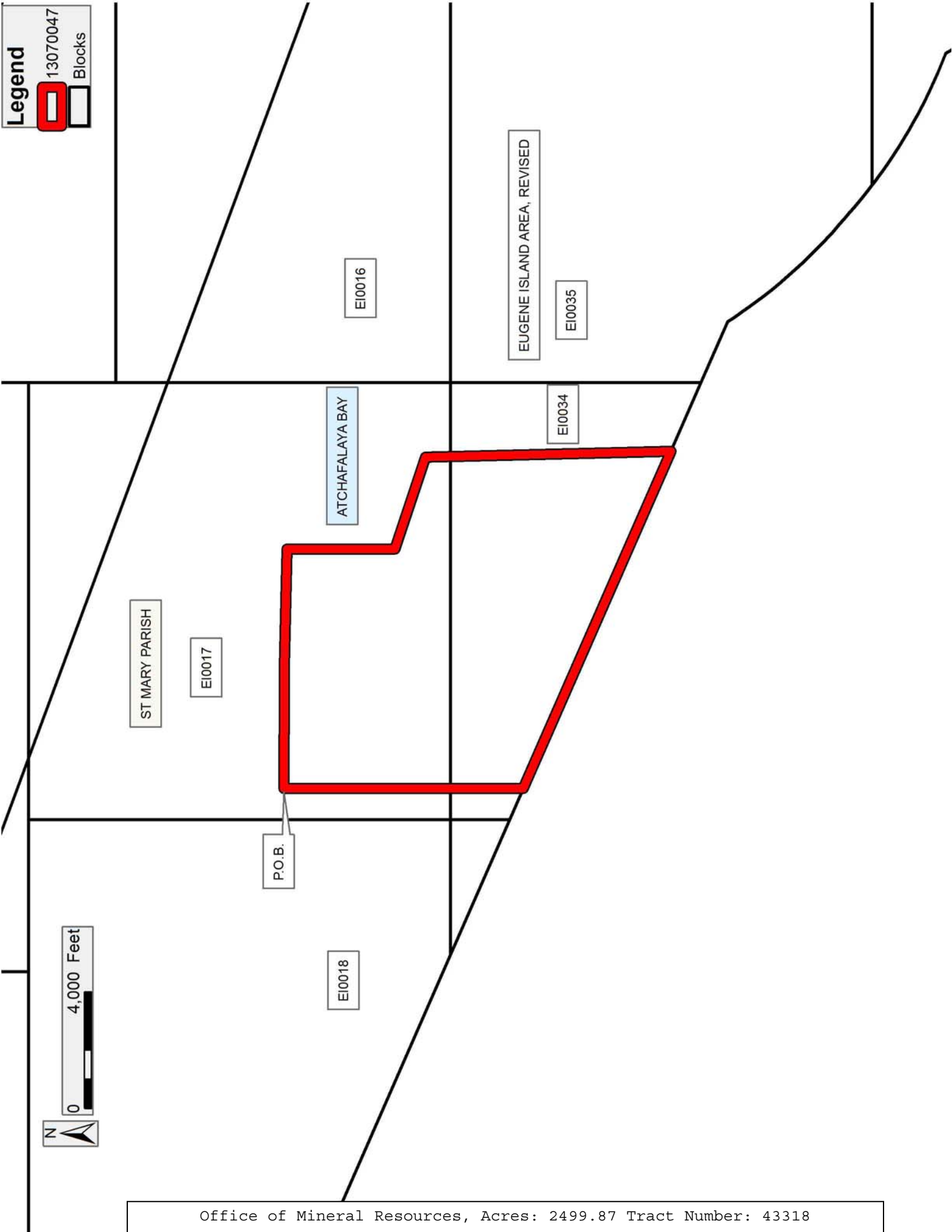
Applicant: LESLIE M. COOPER

Bidder	Cash Payment	Price/ Acre	Rental	Oil	Gas	Other

Legend

 13070047

 Blocks



TRACT 43319 - Portion of Blocks 17, 34, 35, and 38, Eugene Island Area, Revised, St. Mary Parish, Louisiana

The beds and bottoms of all water bodies belonging to the State of Louisiana located in Blocks 17, 34, 35, and 38, Eugene Island Area, Revised, together with any present lands formed by accretion to the shoreline or islands formed therein, located in St. Mary Parish, Louisiana, owned by and not presently under mineral lease as of July 10, 2013, from the State of Louisiana, the geographical area of which is more fully described as follows: Beginning at a point having Coordinates of X = 1,967,399.14 and Y = 241,744.30; thence South 71 degrees 37 minutes 54 seconds East 2,693.79 feet to the Southwest corner of State Lease No. 19924 having Coordinates of X = 1,969,955.68 and Y = 240,895.42; thence East 5,000 feet along the South boundary of said State Lease No. 19924 to its Southeast corner having Coordinates of X = 1,974,955.68 and Y = 240,895.42; thence South 58 degrees 34 minutes 28 seconds East 2,851.53 feet to a point having Coordinates of X = 1,977,388.94 and Y = 239,408.66; thence South 02 degrees 14 minutes 08 seconds East 13,854.81 feet to a point on the Three Mile Line, as decreed by the Supreme Court of the United States, as determined by a Special Master appointed therein, in litigation styled *United States v. State of Louisiana et al No. 9 Original*, in 1975, having Coordinates of X = 1,977,929.41 and Y = 225,564.39; thence Northwesterly along an arc having a radius of 18,240.60 feet and a center located at X = 1,987,818 and Y = 240,892 to a point having Coordinates of X = 1,975,782 and Y = 227,186; thence Northwesterly along an arc having a radius of 18,240.60 feet and a center located at X = 1,987,371 and Y = 241,272 to a point having Coordinates of X = 1,972,054 and Y = 231,367; thence Northwesterly on a straight line to a point having Coordinates of X = 1,967,603.12 and Y = 233,313.87; thence North 01 degrees 23 minutes 10 seconds West 8,432.89 feet to the point of beginning, containing approximately **2,499.28 acres, LESS AND EXCEPT** that portion thereof, if any, lying seaward of the line three nautical miles from the coast line of Louisiana, as said three mile line has been decreed by the Supreme Court of the United States, as determined by a Special Master appointed therein, in litigation styled **United States v. State of Louisiana et al No. 9 Original**, in 1975, all as more particularly outlined on a plat in the Office of Mineral Resources, Department of Natural Resources. All bearings, distances and coordinates are based on the Louisiana Coordinate System of 1927, (South Zone).

NOTE: The above description of the Tract nominated for lease has been provided and corrected, where required, exclusively by the nomination party. Any mineral lease selected from this Tract and awarded by the Louisiana State Mineral and Energy Board shall be without warranty of any kind, either express, implied, or statutory, including, but not limited to, the implied warranties of merchantability and fitness for a particular purpose. Should the mineral lease awarded by the Louisiana State Mineral and Energy Board be subsequently modified, cancelled or abrogated due to the existence of conflicting leases, operating agreements, private claims or other future obligations or conditions which may affect all or any

portion of the leased Tract, it shall not relieve the Lessee of the obligation to pay any bonus due thereon to the Louisiana State Mineral and Energy Board, nor shall the Louisiana State Mineral and Energy Board be obligated to refund any consideration paid by the Lessor prior to such modification, cancellation, or abrogation, including, but not limited to, bonuses, rentals and royalties.

NOTE: The above described tract may be in the vicinity of existing shell reefs where drilling and dredging operations must be conducted in strict conformity with the regulations adopted by the Louisiana Department of Wildlife and Fisheries and/or the U.S. Corps of Engineers, U.S. Army.

NOTE: The State of Louisiana does hereby reserve, and this lease shall be subject to, the imprescriptible right of surface use in the nature of a servitude in favor of the Department of Natural Resources, including its Offices and Commissions, for the sole purpose of implementing, constructing, servicing and maintaining approved coastal zone management and/or restoration projects. Utilization of any and all rights derived under this lease by the mineral lessee, its agents, successors or assigns, shall not interfere with nor hinder the reasonable surface use by the Department of Natural Resources, its Offices or Commissions, as herein above reserved.


NOTE: It appears, according to our records, that a portion of this Tract is located within the restrictive safety fairway area as set out by the Corps of Engineers, U.S. Army and/or the restrictive anchorage area as set out by the U.S. Coast Guard.

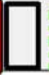
NOTE: This tract is located in an area designated by the Louisiana Legislature or the Wildlife and Fisheries Commission as a Public Oyster Seed Ground, Reservation, or area of Calcasieu or Sabine Lake. Proposed projects occurring in these areas will be evaluated on a case by case basis by Louisiana Department of Wildlife & Fisheries. Modifications to proposed project features including, but not limited to, access routes, well sites, flowlines, and appurtenant structures maybe required by the Louisiana Department of Wildlife and Fisheries. In addition, compensatory mitigation will be required to offset unavoidable habitat impacts.


Bidder	Cash Payment	Price/ Acre	Rental	Oil	Gas	Other

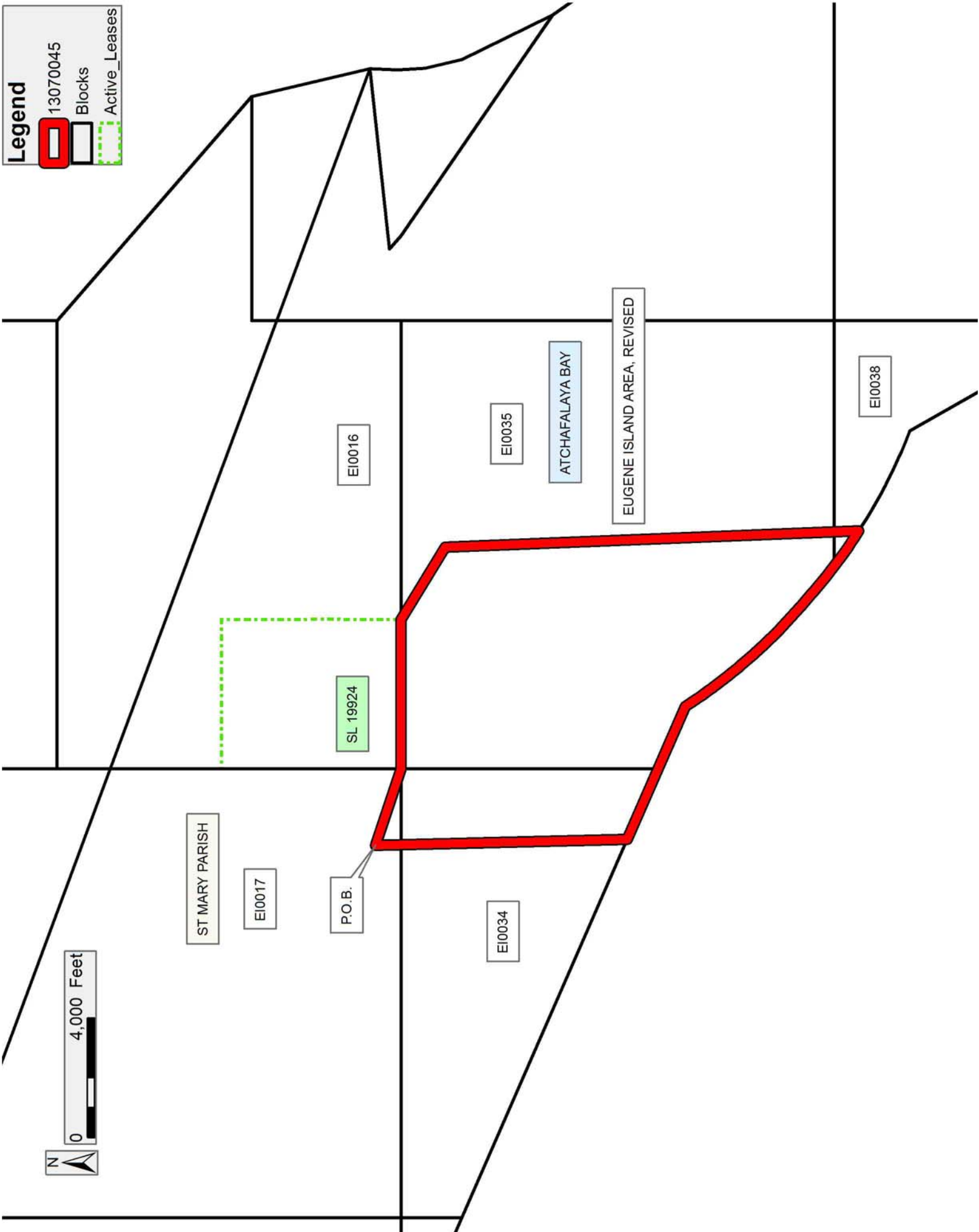
Applicant: LESLIE M. COOPER

Legend


13070045


Blocks


Active_Leases



TRACT 43320 - Portion of Blocks 35, 36, 37, and 38, Eugene Island Area, Revised, St. Mary Parish, Louisiana

The beds and bottoms of all water bodies belonging to the State of Louisiana located in Blocks 35, 36, 37, and 38, Eugene Island Area, Revised, together with any present lands formed by accretion to the shoreline or islands formed therein, located in St. Mary Parish, Louisiana, owned by and not presently under mineral lease as of July 10, 2013, from the State of Louisiana, the geographical area of which is more fully described as follows: Beginning at a point having Coordinates of X = 1,977,388.94 and Y = 239,408.66; thence South 58 degrees 34 minutes 28 seconds East 8,615.60 feet to a point having Coordinates of X = 1,984,740.78 and Y = 234,916.56; thence South 02 degrees 14 minutes 08 seconds East 17,296.41 feet to a point on the Three Mile Line, as decreed by the Supreme Court of the United States, as determined by a Special Master appointed therein, in litigation styled *United States v. State of Louisiana et al No. 9 Original*, in 1975, having Coordinates of X = 1,985,415.51 and Y = 217,633.31; thence Northwesterly on a straight line to a point having Coordinates of X = 1,984,419 and Y = 218,858; thence Northwesterly along an arc having a radius of 18,240.60 feet and a center located at X = 1,998,568 and Y = 230,370 to a point having Coordinates of X = 1,982,726 and Y = 221,329; thence Northwesterly on a straight line to a point having Coordinates of X = 1,981,279 and Y = 223,864; thence Northwesterly along an arc having a radius of 18,240.60 feet and a center located at X = 1,987,818 and Y = 240,892 to a point having Coordinates of X = 1,977,929.41 and Y = 225,564.39; thence North 02 degrees 14 minutes 08 seconds West 13,854.81 feet to the point of beginning, containing approximately **2,435.03 acres, LESS AND EXCEPT** that portion thereof, if any, lying seaward of the line three nautical miles from the coast line of Louisiana, as said three mile line has been decreed by the Supreme Court of the United States, as determined by a Special Master appointed therein, in litigation styled **United States v. State of Louisiana et al No. 9 Original**, in 1975, all as more particularly outlined on a plat in the Office of Mineral Resources, Department of Natural Resources. All bearings, distances and coordinates are based on the Louisiana Coordinate System of 1927, (South Zone).

NOTE: The above description of the Tract nominated for lease has been provided and corrected, where required, exclusively by the nomination party. Any mineral lease selected from this Tract and awarded by the Louisiana State Mineral and Energy Board shall be without warranty of any kind, either express, implied, or statutory, including, but not limited to, the implied warranties of merchantability and fitness for a particular purpose. Should the mineral lease awarded by the Louisiana State Mineral and Energy Board be subsequently modified, cancelled or abrogated due to the existence of conflicting leases, operating agreements, private claims or other future obligations or conditions which may affect all or any portion of the leased Tract, it shall not relieve the Lessee of the obligation to pay any bonus due thereon to the Louisiana State Mineral and Energy Board, nor shall the Louisiana State Mineral and Energy Board be

obligated to refund any consideration paid by the Lessor prior to such modification, cancellation, or abrogation, including, but not limited to, bonuses, rentals and royalties.

NOTE: The above described tract may be in the vicinity of existing shell reefs where drilling and dredging operations must be conducted in strict conformity with the regulations adopted by the Louisiana Department of Wildlife and Fisheries and/or the U.S. Corps of Engineers, U.S. Army.

NOTE: The State of Louisiana does hereby reserve, and this lease shall be subject to, the imprescriptible right of surface use in the nature of a servitude in favor of the Department of Natural Resources, including its Offices and Commissions, for the sole purpose of implementing, constructing, servicing and maintaining approved coastal zone management and/or restoration projects. Utilization of any and all rights derived under this lease by the mineral lessee, its agents, successors or assigns, shall not interfere with nor hinder the reasonable surface use by the Department of Natural Resources, its Offices or Commissions, as herein above reserved.

NOTE: This tract is located in an area designated by the Louisiana Legislature or the Wildlife and Fisheries Commission as a Public Oyster Seed Ground, Reservation, or area of Calcasieu or Sabine Lake. Proposed projects occurring in these areas will be evaluated on a case by case basis by Louisiana Department of Wildlife & Fisheries. Modifications to proposed project features including, but not limited to, access routes, well sites, flowlines, and appurtenant structures maybe required by the Louisiana Department of Wildlife and Fisheries. In addition, compensatory mitigation will be required to offset unavoidable habitat impacts.

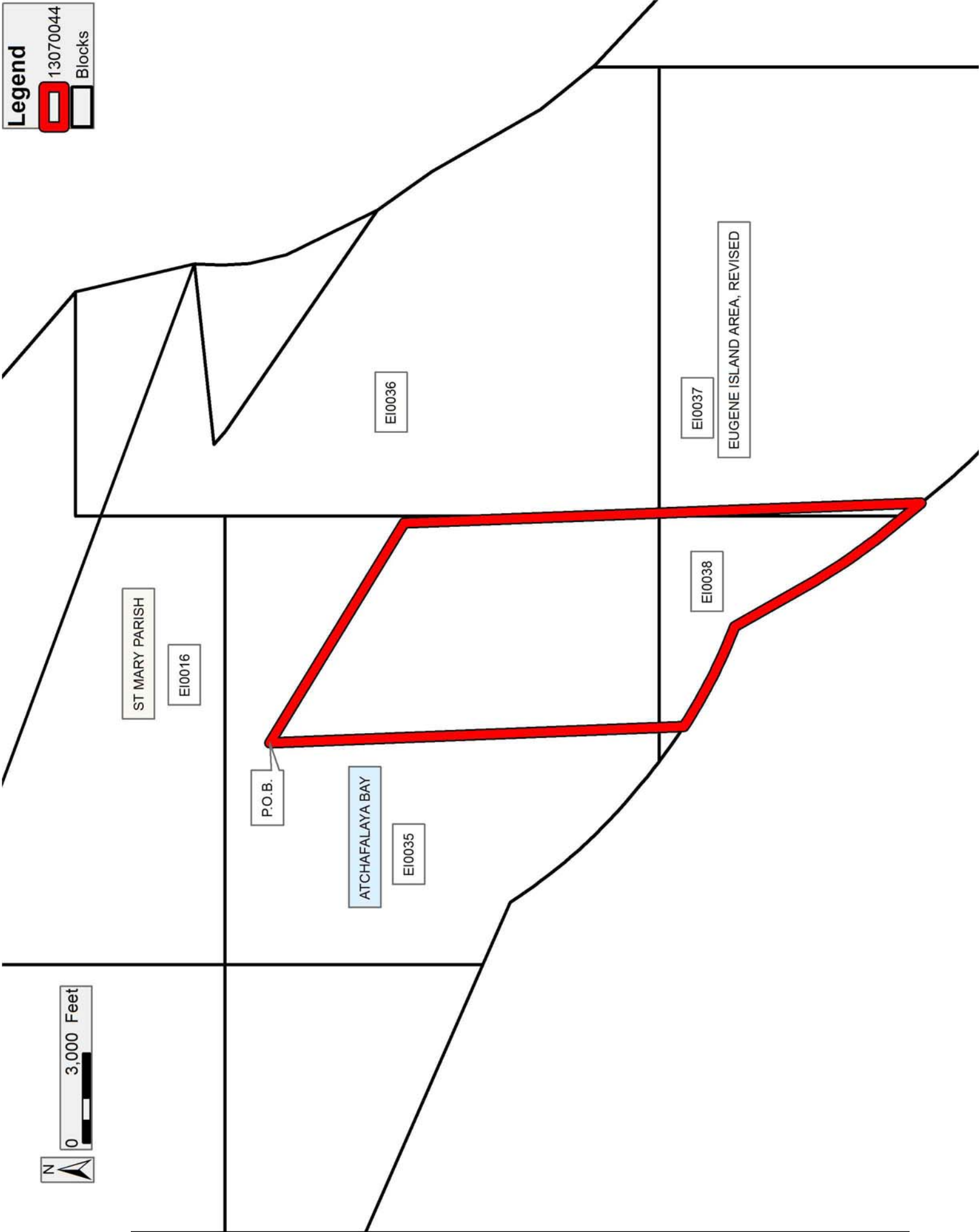
Applicant: LESLIE M. COOPER

Bidder	Cash Payment	Price/ Acre	Rental	Oil	Gas	Other

Legend

13070044

Blocks



TRACT 43321 - Portion of Blocks 121, and 122, South Timbalier Area, Revised, Terrebonne Parish, Louisiana

The beds and bottoms of all water bodies belonging to the State of Louisiana located in Blocks 121, and 122, South Timbalier Area, Revised, together with any present lands formed by accretion to the shoreline or islands formed therein, located in Terrebonne Parish, Louisiana, owned by and not presently under mineral lease as of July 10, 2013, from the State of Louisiana, the geographical area of which is more fully described as follows: Beginning at a point within Block 121, South Timbalier Area, Revised, also being a point on the Louisiana Coastline, as decreed by the Supreme Court of the United States, as determined by a Special Master appointed therein, in litigation styled *United States v. State of Louisiana et al* No. 9 Original, in 1975, having Coordinates of X = 2,245,721.53 and Y = 152,250.93; thence along the said Coastline the following: Northeasterly on a straight line to a point having Coordinates of X = 2,253,306 and Y = 154,102 and Southeasterly on a straight line to a point on the West boundary of State Lease No. 1249, as amended having Coordinates of X = 2,253,964.83 and Y = 153,239.62; thence along the boundaries of said State Lease No. 1249 the following courses: South 09 degrees 41 minutes 15 seconds East 268.45 feet to a point having Coordinates of X = 2,254,010.00 and Y = 152,975.00, South 16 degrees 17 minutes 29 seconds East 3,297.96 feet to a point having Coordinates of X = 2,254,935.16 and Y = 149,809.46 and North 74 degrees 44 minutes 42 seconds East 199.93 feet to a point having Coordinates of X = 2,255,128.04 and Y = 149,862.07; thence South 5,668.54 feet to a point on the West boundary of said State Lease No. 1249 having Coordinates of X = 2,255,128.04 and Y = 144,193.53; thence along the boundaries of said State Lease No. 1249 the following courses: continue South 1,485.00 feet to a point having Coordinates of X = 2,255,128.04 and Y = 142,708.53 and West 1,320.00 feet to a point on the East boundary of State Lease No. 21137 having Coordinates of X = 2,253,808.04 and Y = 142,708.53; thence along the boundary of said State Lease No. 21137 the following: North 01 degrees 33 minutes 37 minutes West 1,314.32 feet to a point having Coordinates of X = 2,253,772.25 and Y = 144,022.36, West 1,133.75 feet to a point having Coordinates of X = 2,252,638.50 and Y = 144,022.36, North 00 degrees 02 minutes 47 seconds East 1,761.04 feet to a point having Coordinates of X = 2,252,639.93 and Y = 145,783.40 and South 85 degrees 48 minutes 49 seconds West 641.64 feet to a point on the East boundary of State Lease No. 21138 having Coordinates of X = 2,252,000.00 and Y = 145,736.56; thence along the boundaries of said State Lease No. 21138 the following courses: North 640.16 feet to a point having Coordinates of X = 2,252,000.00 and Y = 146,376.72, South 89 degrees 38 minutes 43 seconds West 2,728.55 feet to a point having Coordinates of X = 2,249,271.50 and Y = 146,359.83, South 1,875.19 feet to a point having Coordinates of X = 2,249,271.50 and Y = 144,484.64 and East 1,695.15 feet to a point on the West boundary of said State Lease No. 21137 having Coordinates of X = 2,250,966.65 and Y = 144,484.64; thence South 00 degrees 05 minutes 42 seconds East 2,922.30 feet to a point

being the Southwest corner of said State Lease No. 21137 having Coordinates of X = 2,250,971.50 and Y = 141,562.34; thence South 8.81 feet to a point having Coordinates of X = 2,250,971.50 and Y = 141,553.53; thence West 5,249.97 feet to a point having Coordinates of X = 2,245,721.53 and Y = 141,553.53; thence North 10,697.40 feet to the point of beginning, containing approximately **2,114.83 acres**, all as more particularly outlined on a plat on file in the Office of Mineral Resources, Department of Natural Resources. All bearings, distances and coordinates are based on Louisiana Coordinate System of 1927, (North or South Zone).

NOTE: The above description of the Tract nominated for lease has been provided and corrected, where required, exclusively by the nomination party. Any mineral lease selected from this Tract and awarded by the Louisiana State Mineral and Energy Board shall be without warranty of any kind, either express, implied, or statutory, including, but not limited to, the implied warranties of merchantability and fitness for a particular purpose. Should the mineral lease awarded by the Louisiana State Mineral and Energy Board be subsequently modified, cancelled or abrogated due to the existence of conflicting leases, operating agreements, private claims or other future obligations or conditions which may affect all or any portion of the leased Tract, it shall not relieve the Lessee of the obligation to pay any bonus due thereon to the Louisiana State Mineral and Energy Board, nor shall the Louisiana State Mineral and Energy Board be obligated to refund any consideration paid by the Lessor prior to such modification, cancellation, or abrogation, including, but not limited to, bonuses, rentals and royalties.

NOTE: The State of Louisiana does hereby reserve, and this lease shall be subject to, the imprescriptible right of surface use in the nature of a servitude in favor of the Department of Natural Resources, including its Offices and Commissions, for the sole purpose of implementing, constructing, servicing and maintaining approved coastal zone management and/or restoration projects. Utilization of any and all rights derived under this lease by the mineral lessee, its agents, successors or assigns, shall not interfere with nor hinder the reasonable surface use by the Department of Natural Resources, its Offices or Commissions, as herein above reserved.

NOTE: It appears, according to our records, that a portion of this Tract is located within the restrictive safety fairway area as set out by the Corps of Engineers, U.S. Army and/or the restrictive anchorage area as set out by the U.S. Coast Guard.

Applicant: CYPRESS ENERGY CORPORATION

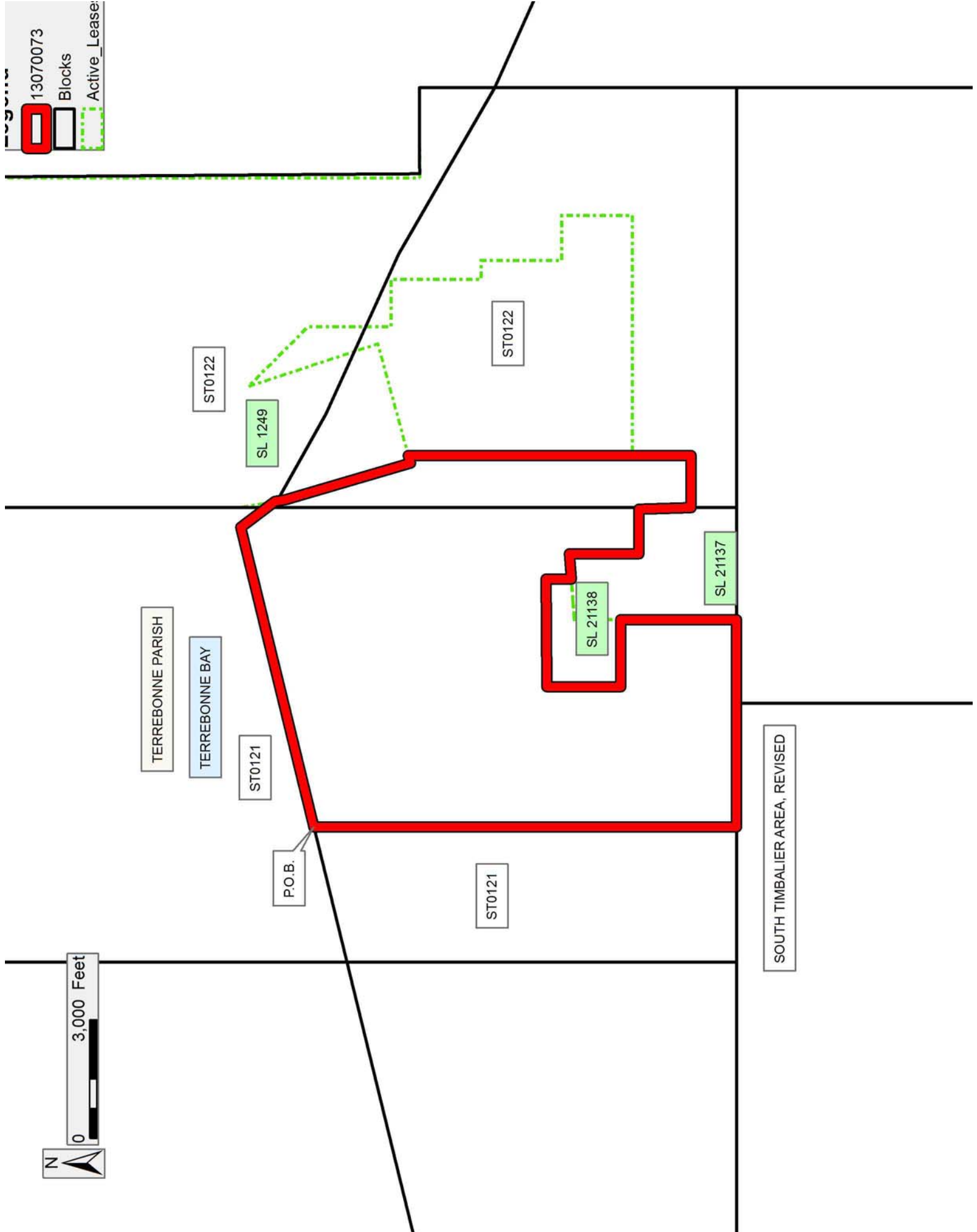
Bidder	Cash Payment	Price/ Acre	Rental	Oil	Gas	Other

Legend

13070073

Blocks

Active_Lease



TRACT 43322 - Portion of Block 120, South Timbalier Area, Revised, Terrebonne Parish, Louisiana

The beds and bottoms of all water bodies belonging to the State of Louisiana located in Block 120, South Timbalier Area, Revised, together with any present lands formed by accretion to the shoreline or islands formed therein, located in Terrebonne Parish, Louisiana, owned by and not presently under mineral lease as of July 10, 2013, from the State of Louisiana, the geographical area of which is more fully described as follows: Beginning at a point within Block 120, South Timbalier Area, Revised also being a point on the Louisiana Coastline, as decreed by the Supreme Court of the United States, as determined by a Special Master appointed therein, in litigation styled *United States v. State of Louisiana et al No. 9 Original*, in 1975, having Coordinates of X = 2,236,721.53 and Y = 150,054.38; thence Northeasterly on a straight line along said Coastline to a point having Coordinates of X = 2,245,721.53 and Y = 152,250.93; thence South 10,697.40 feet to a point having Coordinates of X = 2,245,721.53 and Y = 141,553.53; thence West 9,000.00 feet to a point having Coordinates of X = 2,236,721.53 and Y = 141,553.53; thence North 8,500.85 feet to the point of beginning, containing approximately **1,983.29 acres**, all as more particularly outlined on a plat on file in the Office of Mineral Resources, Department of Natural Resources. All bearings, distances and coordinates are based on Louisiana Coordinate System of 1927, (North or South Zone).

NOTE: The above description of the Tract nominated for lease has been provided and corrected, where required, exclusively by the nomination party. Any mineral lease selected from this Tract and awarded by the Louisiana State Mineral and Energy Board shall be without warranty of any kind, either express, implied, or statutory, including, but not limited to, the implied warranties of merchantability and fitness for a particular purpose. Should the mineral lease awarded by the Louisiana State Mineral and Energy Board be subsequently modified, cancelled or abrogated due to the existence of conflicting leases, operating agreements, private claims or other future obligations or conditions which may affect all or any portion of the leased Tract, it shall not relieve the Lessee of the obligation to pay any bonus due thereon to the Louisiana State Mineral and Energy Board, nor shall the Louisiana State Mineral and Energy Board be obligated to refund any consideration paid by the Lessor prior to such modification, cancellation, or abrogation, including, but not limited to, bonuses, rentals and royalties.

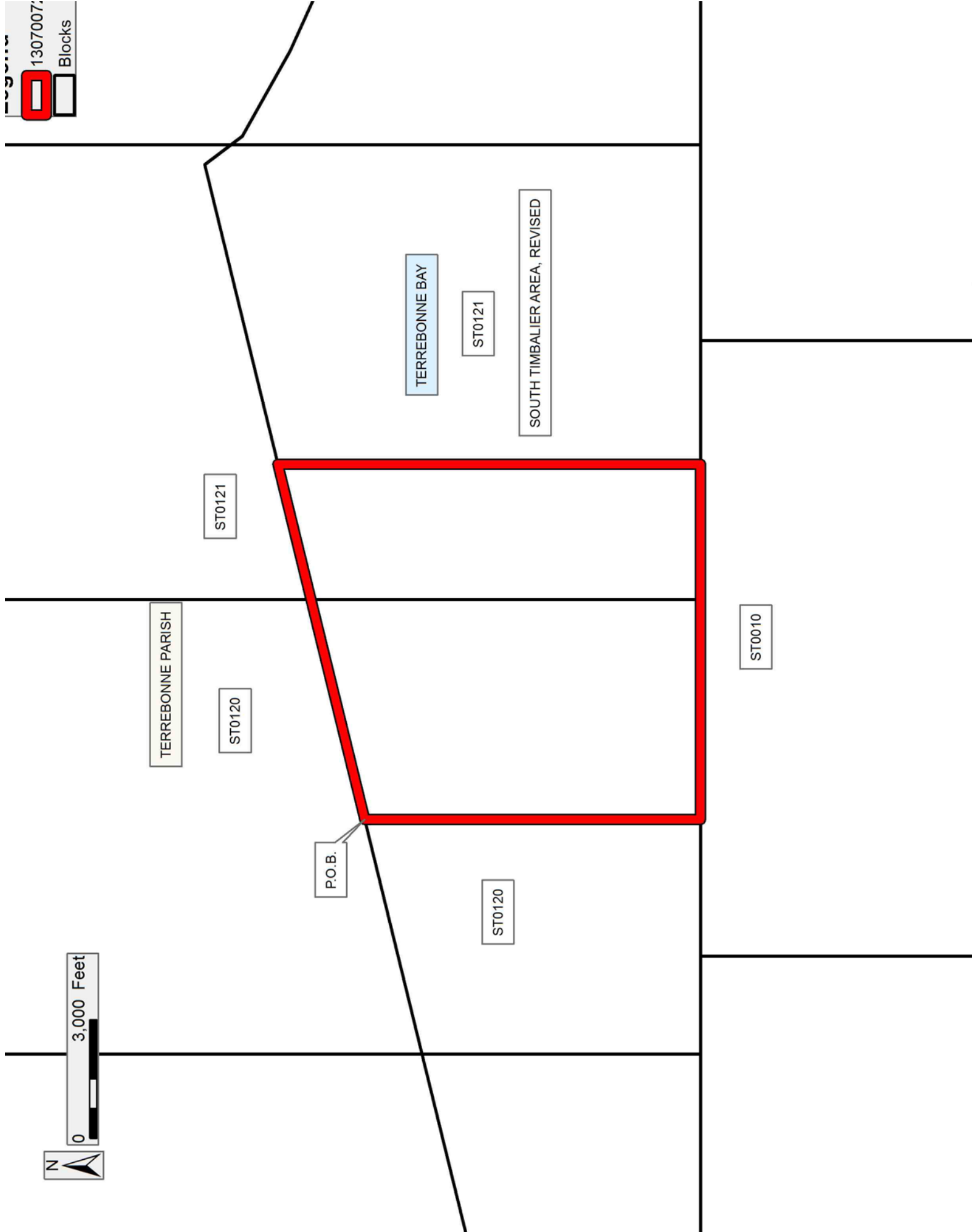
NOTE: The State of Louisiana does hereby reserve, and this lease shall be subject to, the imprescriptible right of surface use in the nature of a servitude in favor of the Department of Natural Resources, including its Offices and Commissions, for the sole purpose of implementing, constructing, servicing and maintaining approved coastal zone management and/or restoration projects. Utilization of any and all rights derived under this lease by the mineral lessee, its agents, successors or assigns, shall not interfere with nor hinder the reasonable surface use by the

Department of Natural Resources, its Offices or Commissions, as herein above reserved.

NOTE: It appears, according to our records, that a portion of this Tract is located within the restrictive safety fairway area as set out by the Corps of Engineers, U.S. Army and/or the restrictive anchorage area as set out by the U.S. Coast Guard.

Applicant: CYPRESS ENERGY CORPORATION

Bidder	Cash Payment	Price/ Acre	Rental	Oil	Gas	Other



TRACT 43323 - Portion of Block 122, South Timbalier Area, Revised, Terrebonne Parish, Louisiana

The beds and bottoms of all water bodies belonging to the State of Louisiana located in Block 122, South Timbalier Area, Revised, together with any present lands formed by accretion to the shoreline or islands formed therein, located in Terrebonne Parish, Louisiana, owned by and not presently under mineral lease as of July 10, 2013, from the State of Louisiana, the geographical area of which is more fully described as follows: Beginning at a point within Block 122, South Timbalier Area, Revised, also being a point on the West boundary of State Lease No. 1249, as amended having Coordinates of X = 2,255,128.04 and Y = 149,862.07; thence along the boundaries of said State Lease No. 1249 the following courses: North 74 degrees 44 minutes 41 seconds East 799.88 feet to a point having Coordinates of X = 2,255,899.74 and Y = 150,072.53, North 74 degrees 44 minutes 41 seconds East 2,135.69 feet to a point having Coordinates of X = 2,257,960.18 and Y = 150,634.47 and North 18 degrees 14 minutes 36 seconds West 627.22 feet to a point on the Louisiana Coastline, as decreed by the Supreme Court of the United States, as determined by a Special Master appointed therein, in litigation styled *United States v. State of Louisiana et al No. 9 Original*, in 1975, having Coordinates of X = 2,257,763.82 and Y = 151,230.16; thence Southeasterly on a straight line to point having Coordinates of X = 2,258,386.02 and Y = 150,946.98, also being a point on the West boundary of said State Lease No. 1249; thence along the boundaries of said State Lease No. 1249 the following courses: South 641.98 feet to a point having Coordinates of X = 2,258,386.02 and Y = 150,305.00, East 1,200.00 feet to a point having Coordinates of X = 2,259,586.02 and Y = 150,305.00, South 2,280.00 feet to a point having Coordinates of X = 2,259,586.02 and Y = 148,025.00, East 480.00 feet to a point having Coordinates of X = 2,260,066.02 and Y = 145,025.00, South 2,040.00 feet to a point having Coordinates of X = 2,260,066.02 and Y = 145,985.00, East 1,140.00 feet to a point having Coordinates of X = 2,261,206.02 and Y = 145,985.00, South 1,791.47 feet to a point having Coordinates of X = 2,261,206.02 and Y = 144,193.53 and West 6,077.98 feet to a point having Coordinates of X = 2,255,128.04 and Y = 144,193.53; thence North 5,668.54 feet to the point of beginning, containing approximately **719.24 acres**, all as more particularly outlined on a plat on file in the Office of Mineral Resources, Department of Natural Resources. All bearings, distances and coordinates are based on Louisiana Coordinate System of 1927, (North or South Zone).

NOTE: The above description of the Tract nominated for lease has been provided and corrected, where required, exclusively by the nomination party. Any mineral lease selected from this Tract and awarded by the Louisiana State Mineral and Energy Board shall be without warranty of any kind, either express, implied, or statutory, including, but not limited to, the implied warranties of merchantability and fitness for a particular purpose. Should the mineral lease awarded by the Louisiana State Mineral and Energy Board be subsequently modified, cancelled or abrogated due to the existence of conflicting leases, operating agreements, private claims

or other future obligations or conditions which may affect all or any portion of the leased Tract, it shall not relieve the Lessee of the obligation to pay any bonus due thereon to the Louisiana State Mineral and Energy Board, nor shall the Louisiana State Mineral and Energy Board be obligated to refund any consideration paid by the Lessor prior to such modification, cancellation, or abrogation, including, but not limited to, bonuses, rentals and royalties.

NOTE: The State of Louisiana does hereby reserve, and this lease shall be subject to, the imprescriptible right of surface use in the nature of a servitude in favor of the Department of Natural Resources, including its Offices and Commissions, for the sole purpose of implementing, constructing, servicing and maintaining approved coastal zone management and/or restoration projects. Utilization of any and all rights derived under this lease by the mineral lessee, its agents, successors or assigns, shall not interfere with nor hinder the reasonable surface use by the Department of Natural Resources, its Offices or Commissions, as herein above reserved.

NOTE: It appears, according to our records, that a portion of this Tract is located within the restrictive safety fairway area as set out by the Corps of Engineers, U.S. Army and/or the restrictive anchorage area as set out by the U.S. Coast Guard.

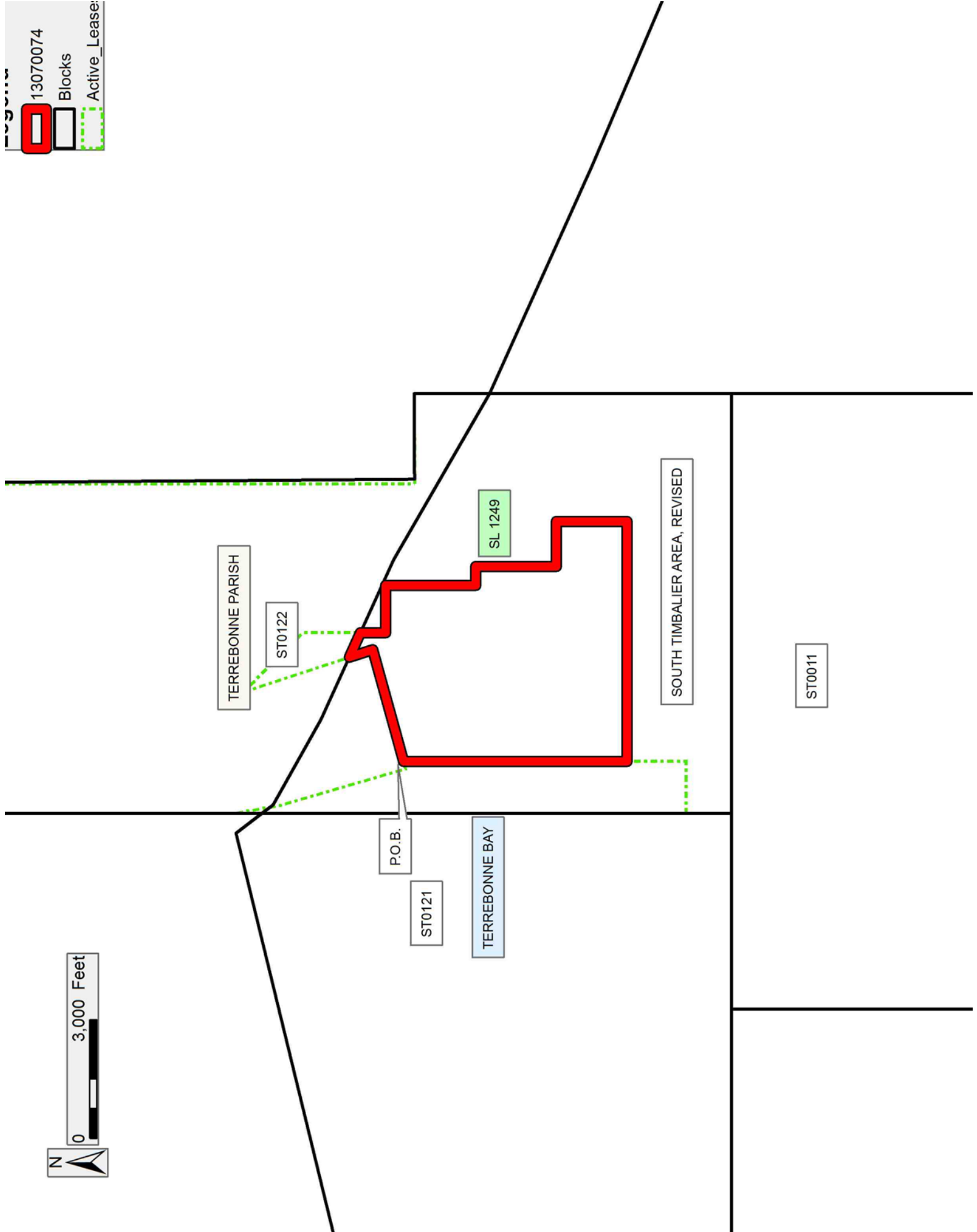
Applicant: CYPRESS ENERGY CORPORATION

Bidder	Cash Payment	Price/ Acre	Rental	Oil	Gas	Other

13070074

Blocks

Active_Lease:



TRACT 43324 - Portion of Blocks 11, and 12, South Timbalier Area, Revised, Terrebonne Parish, Louisiana

The beds and bottoms of all water bodies belonging to the State of Louisiana located in Blocks 11, and 12, South Timbalier Area, Revised, together with any present lands formed by accretion to the shoreline or islands formed therein, located in Terrebonne Parish, Louisiana, owned by and not presently under mineral lease as of July 10, 2013, from the State of Louisiana, the geographical area of which is more fully described as follows: Beginning at a point being the Northwest corner of Block 12, South Timbalier Area, Revised, also being the Northeast corner of State Lease No. 1249, as amended and a point on the Louisiana Coastline, as decreed by the Supreme Court of the United States, as determined by a Special Master appointed therein, in litigation styled *United States v. State of Louisiana et al No. 9 Original*, in 1975, having Coordinates of X = 2,264,446.02 and Y = 147,676.30; thence along said Coastline the following: Southeasterly on a straight line to a point having Coordinates of X = 2,264,450 and Y = 147,674 and Southeasterly on a straight line to point having Coordinates of X = 2,268,798.26 and Y = 145,722.38; thence South 10,875.11 feet to a point having Coordinates of X = 2,268,798.26 and Y = 134,847.28; thence West 9,552.24 feet to a point having Coordinates of X = 2,259,246.02 and Y = 134,847.28; thence North 5,416.25 feet to the Southeast corner of said State Lease No. 2986, as amended having Coordinates of X = 2,259,246.02 and Y = 140,263.53; thence continue North 1,290.00 feet along the East boundary of said State Lease No. 2986 to its Northeast corner and a point on the South boundary of said State Lease No. 1249 having Coordinates of X = 2,259,246.02 and Y = 141,553.53; thence East 3,878.61 feet along the South boundary of said State Lease No. 1249 to the Western tip of State Lease No. 15108, as amended having Coordinates of X = 2,263,124.63 and Y = 141,553.53; thence along the boundaries of said State Lease No. 1249 the following courses: South 64 degrees 12 minutes 06 seconds East 500.00 feet to a point having Coordinates of X = 2,263,574.79 and Y = 141,335.93, South 66 degrees 02 minutes 24 seconds East 301.90 feet to a point having Coordinates of X = 2,263,850.68 and Y = 141,213.33, South 69 degrees 40 minutes 04 seconds East 537.53 feet to a point having Coordinates of X = 2,264,354.72 and Y = 141,026.56 and North 47 degrees 15 minutes 46 seconds East 124.31 feet to its Southeast corner and the Southern tip of State Lease No. 15108 having Coordinates of X = 2,264,446.02 and Y = 141,110.92; thence along the boundaries of said State Lease No. 15110 the following courses: North 47 degrees 15 minutes 46 seconds East 1,061.94 feet to a point having Coordinates of X = 2,265,226.00 and Y = 141,831.58, North 73 degrees 59 minutes 53 seconds West 393.90 feet to a point having Coordinates of X = 2,264,847.36 and Y = 141,940.17 and North 69 degrees 57 minutes 29 seconds West 427.21 feet to its Northern tip and a point on the East boundary of said State Lease No. 1249 having Coordinates of X = 2,264,446.02 and Y = 142,086.58; thence North 5,589.72 feet to the point of beginning, containing approximately **1967.20 acres**, all as more particularly outlined on a plat on file in the Office of Mineral Resources, Department of Natural Resources. All bearings, distances and

coordinates are based on Louisiana Coordinate System of 1927, (North or South Zone).

NOTE: The above description of the Tract nominated for lease has been provided and corrected, where required, exclusively by the nomination party. Any mineral lease selected from this Tract and awarded by the Louisiana State Mineral and Energy Board shall be without warranty of any kind, either express, implied, or statutory, including, but not limited to, the implied warranties of merchantability and fitness for a particular purpose. Should the mineral lease awarded by the Louisiana State Mineral and Energy Board be subsequently modified, cancelled or abrogated due to the existence of conflicting leases, operating agreements, private claims or other future obligations or conditions which may affect all or any portion of the leased Tract, it shall not relieve the Lessee of the obligation to pay any bonus due thereon to the Louisiana State Mineral and Energy Board, nor shall the Louisiana State Mineral and Energy Board be obligated to refund any consideration paid by the Lessor prior to such modification, cancellation, or abrogation, including, but not limited to, bonuses, rentals and royalties.

NOTE: The State of Louisiana does hereby reserve, and this lease shall be subject to, the imprescriptible right of surface use in the nature of a servitude in favor of the Department of Natural Resources, including its Offices and Commissions, for the sole purpose of implementing, constructing, servicing and maintaining approved coastal zone management and/or restoration projects. Utilization of any and all rights derived under this lease by the mineral lessee, its agents, successors or assigns, shall not interfere with nor hinder the reasonable surface use by the Department of Natural Resources, its Offices or Commissions, as herein above reserved.

NOTE: It appears, according to our records, that a portion of this Tract is located within the restrictive safety fairway area as set out by the Corps of Engineers, U.S. Army and/or the restrictive anchorage area as set out by the U.S. Coast Guard.

Applicant: CYPRESS ENERGY CORPORATION

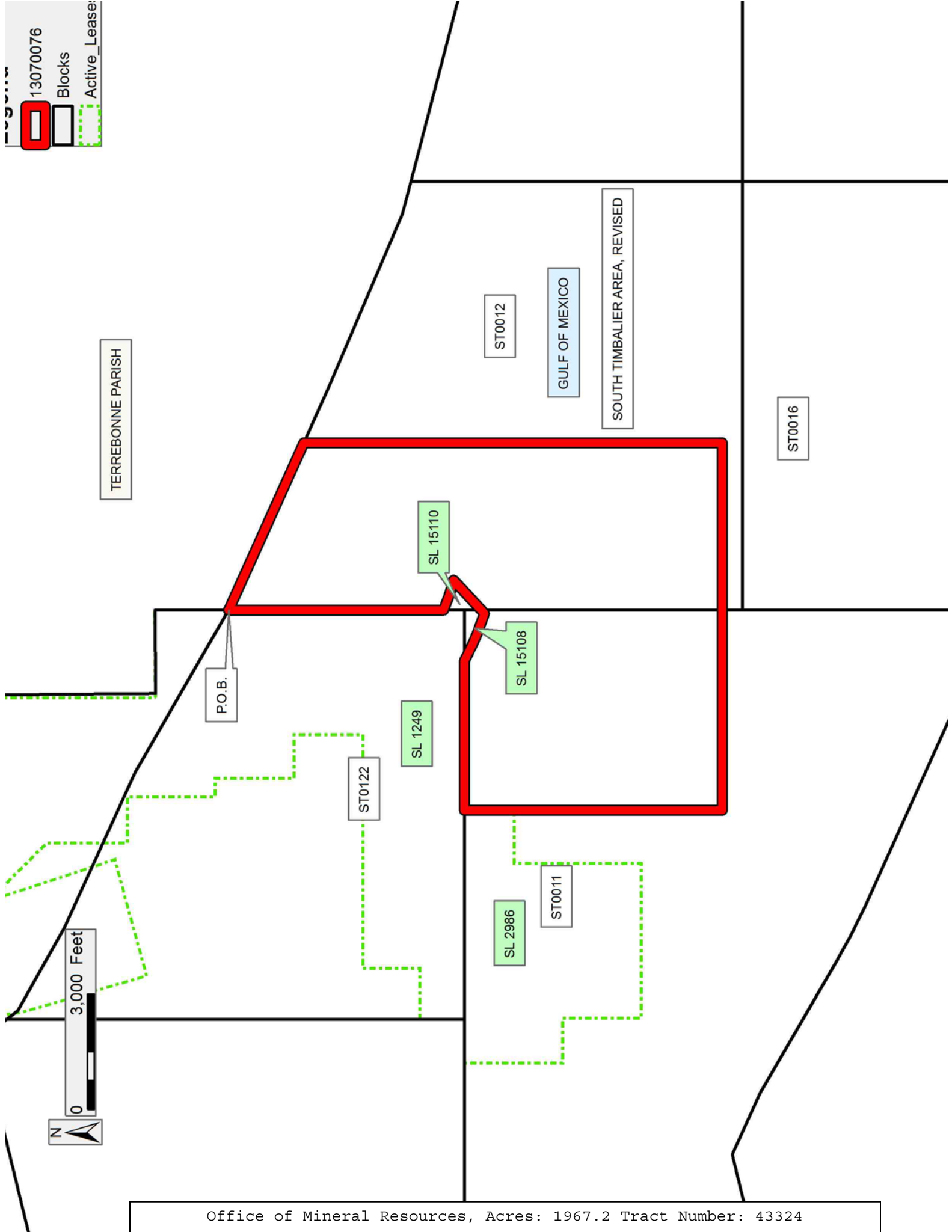
Bidder	Cash Payment	Price/ Acre	Rental	Oil	Gas	Other

Legend

13070076

Blocks

Active_Lease



TRACT 43325 - Portion of Blocks 12, and 13, South Timbalier Area, Revised, Terrebonne Parish, Louisiana

The beds and bottoms of all water bodies belonging to the State of Louisiana located in Blocks 12, and 13, South Timbalier Area, Revised, together with any present lands formed by accretion to the shoreline or islands formed therein, located in Terrebonne Parish, Louisiana, owned by and not presently under mineral lease as of July 10, 2013, from the State of Louisiana, the geographical area of which is more fully described as follows: Beginning at a point within Block 12, South Timbalier Area, Revised also being a point on the Louisiana Coastline, as decreed by the Supreme Court of the United States, as determined by a Special Master appointed therein, in litigation styled *United States v. State of Louisiana et al No. 9 Original*, in 1975, having Coordinates of X = 2,268,798.26 and Y = 145,722.38; thence along said Coastline the following courses: Southeasterly on a straight line to point having Coordinates of X = 2,270,205 and Y = 145,091, Southeasterly on a straight line to point having Coordinates of X = 2,274,749 and Y = 143,161 and Southeasterly on a straight line to point having Coordinates of X = 2,277,605.50 and Y = 142,418.65; thence South 7,571.38 feet to a point having Coordinates of X = 2,277,605.50 and Y = 134,847.28; thence West 8,807.24 feet to a point having Coordinates of X = 2,268,798.26 and Y = 134,847.28; thence North 10,875.11 feet to the point of beginning, containing approximately **1829.77 acres**, all as more particularly outlined on a plat on file in the Office of Mineral Resources, Department of Natural Resources. All bearings, distances and coordinates are based on Louisiana Coordinate System of 1927, (North or South Zone).

NOTE: The above description of the Tract nominated for lease has been provided and corrected, where required, exclusively by the nomination party. Any mineral lease selected from this Tract and awarded by the Louisiana State Mineral and Energy Board shall be without warranty of any kind, either express, implied, or statutory, including, but not limited to, the implied warranties of merchantability and fitness for a particular purpose. Should the mineral lease awarded by the Louisiana State Mineral and Energy Board be subsequently modified, cancelled or abrogated due to the existence of conflicting leases, operating agreements, private claims or other future obligations or conditions which may affect all or any portion of the leased Tract, it shall not relieve the Lessee of the obligation to pay any bonus due thereon to the Louisiana State Mineral and Energy Board, nor shall the Louisiana State Mineral and Energy Board be obligated to refund any consideration paid by the Lessor prior to such modification, cancellation, or abrogation, including, but not limited to, bonuses, rentals and royalties.

NOTE: The State of Louisiana does hereby reserve, and this lease shall be subject to, the imprescriptible right of surface use in the nature of a servitude in favor of the Department of Natural Resources, including its Offices and Commissions, for the sole purpose of implementing, constructing, servicing and maintaining approved coastal zone management

and/or restoration projects. Utilization of any and all rights derived under this lease by the mineral lessee, its agents, successors or assigns, shall not interfere with nor hinder the reasonable surface use by the Department of Natural Resources, its Offices or Commissions, as herein above reserved.

Applicant: CYPRESS ENERGY CORPORATION

Bidder	Cash Payment	Price/ Acre	Rental	Oil	Gas	Other

