

TRACT 43346 - St. Mary Parish, Louisiana

A portion of all lands located above the mean high water mark, together with lands now or formerly constituting the beds and bottoms of any water body of whatever description or nature belonging to the State of Louisiana which is now located within the boundaries of the Atchafalaya Delta Wildlife Management Area and not presently under mineral lease by the State of Louisiana on July 10, 2013, and more particularly located as follows: Beginning at a point within the Atchafalaya Delta Wildlife Management having Coordinates of X = 1,951,728.00 and Y = 290,548.00; thence South 4,001.00 feet to a point having Coordinates of X = 1,951,728.00 and Y = 286,547.00; thence West 4,966.00 feet to a point having Coordinates of X = 1,946,762.00 and Y = 286,547.00; thence South 1,417.15 feet to a point having Coordinates of X = 1,946,762.00 and Y = 285,129.85; thence West 13,514.00 feet to a point on the East boundary of said State Lease No. 340 having Coordinates of X = 1,933,248.00 and Y = 285,129.85; thence along the boundaries of said State Lease No. 340 the following courses: North 5,418.15 feet to a point having Coordinates of X = 1,933,248.00 and Y = 290,548.00 and East 4,057.29 feet to a point having Coordinates of X = 1,937,305.29 and Y = 290,548.00; thence continue East 14,422.71 feet to the point of beginning, containing approximately **2,137.05 acres**, all as more particularly outlined on a plat on file in the Office of Mineral Resources, Department of Natural Resources. All bearings, distances and coordinates are based on Louisiana Coordinate System of 1927, (South Zone).

NOTE: The above description of the Tract nominated for lease has been provided and corrected, where required, exclusively by the nomination party. Any mineral lease selected from this Tract and awarded by the Louisiana State Mineral and Energy Board shall be without warranty of any kind, either express, implied, or statutory, including, but not limited to, the implied warranties of merchantability and fitness for a particular purpose. Should the mineral lease awarded by the Louisiana State Mineral and Energy Board be subsequently modified, cancelled or abrogated due to the existence of conflicting leases, operating agreements, private claims or other future obligations or conditions which may affect all or any portion of the leased Tract, it shall not relieve the Lessee of the obligation to pay any bonus due thereon to the Louisiana State Mineral and Energy Board, nor shall the Louisiana State Mineral and Energy Board be obligated to refund any consideration paid by the Lessor prior to such modification, cancellation, or abrogation, including, but not limited to, bonuses, rentals and royalties.

NOTE: The mineral lease is located in the Atchafalaya Delta WMA under the jurisdiction of the Louisiana Department of Wildlife and Fisheries which has promulgated rules and regulations for the protection of game and wildlife on the aforesaid Tract and, therefore, shall be subject to said rules and regulations, a copy of which shall be attached to the mineral leases. In addition to the specific rules and regulations applicable, the following shall apply regarding operations under this mineral lease:

- No activities will be allowed without written authorization of the Louisiana Department of Wildlife and Fisheries.
- Proposed projects will be evaluated on a case by case basis. Modifications to proposed project features including but not limited to access routes, spoil placement, well sites, flowlines and appurtenant structures may be required by the Department of Wildlife and Fisheries.
- Compliance with the Atchafalaya Delta WMA regulations will be required unless otherwise specified by the Department of Wildlife and Fisheries.
- Compensatory mitigation will be required to offset unavoidable wetland impacts.
- Compensation and/or oyster seed ground surveys may be required by the Department for potential impacts to productive oyster seed grounds located within the management area.
- Removal of all structures, facilities and equipment will be required within 120 days of abandonment unless otherwise agreed to in writing by the Louisiana Department of Wildlife and Fisheries.
- No activities will be allowed during the hunting season unless approved by the Department.
- This tract is located within the emerging Atchafalaya Delta. No activities will be allowed on emergent islands, sub aerial mudflats or vegetated wetlands. Drilling will be restricted to passes and open water bays. The Louisiana Department of Wildlife and Fisheries (LDWF) shall have discretion to determine access routes. In the event that LDWF approves of dredging for access LDWF shall have discretion to require hydraulic or spray dredging.
- Prior to submitting application for wetland permits to Federal and State permitting agencies the leaseholder shall coordinate project details with the Department of Wildlife and Fisheries. Contact person for the Department will be Mike Windham at (504)284-5268.

Additionally, the Department will require a minimum bonus of \$350.00 per acre and a minimum royalty of 25%.

NOTE: The above described tract may be in the vicinity of existing shell reefs where drilling and dredging operations must be conducted in strict conformity with the regulations adopted by the Louisiana Department of Wildlife and Fisheries and/or the U.S. Corps of Engineers, U.S. Army.

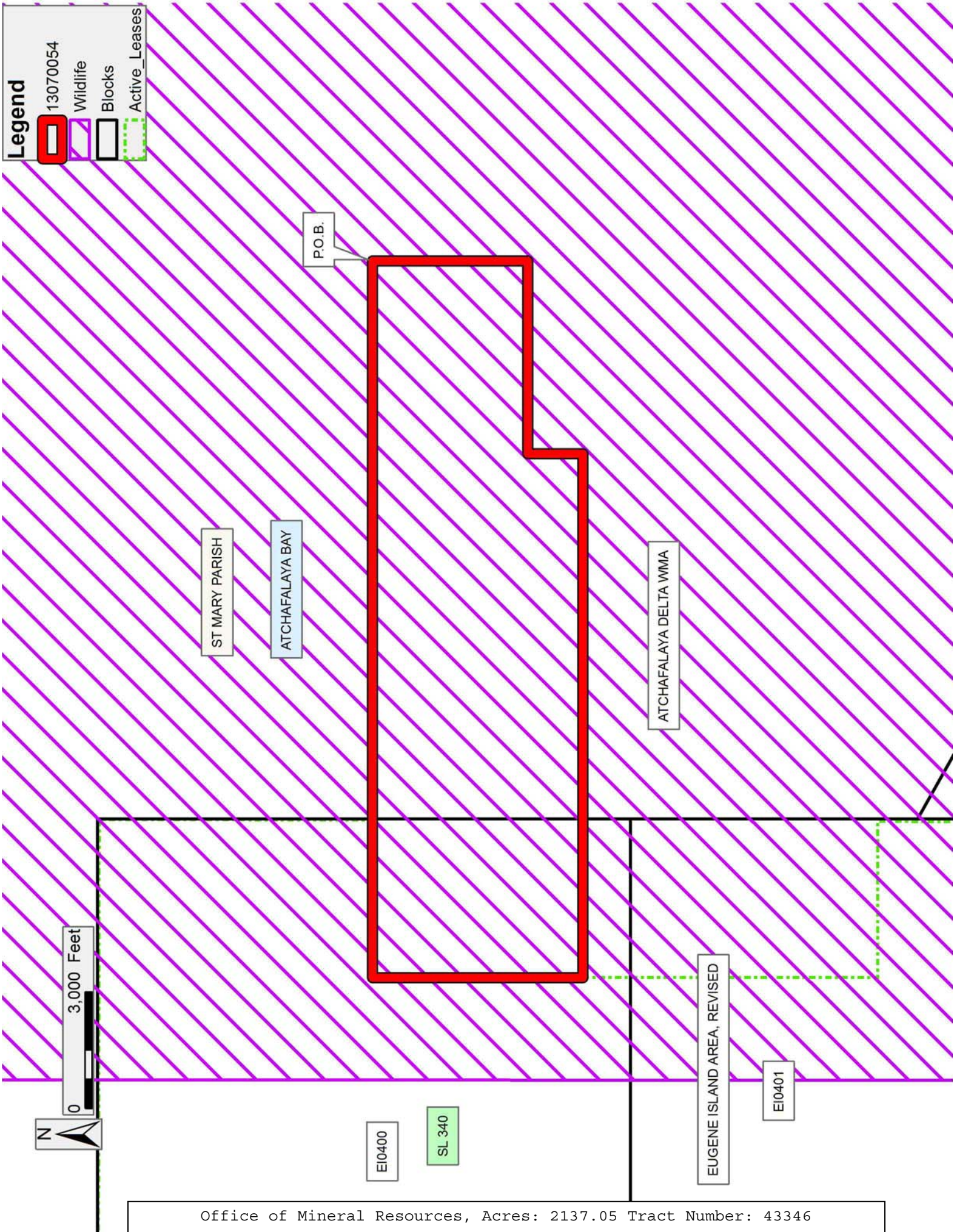
NOTE: The State of Louisiana does hereby reserve, and this lease shall be subject to, the imprescriptible right of surface use in the nature of a servitude in favor of the Department of Natural Resources, including its Offices and Commissions, for the sole purpose of implementing, constructing, servicing and maintaining approved coastal zone management and/or restoration projects. Utilization of any and all rights derived

under this lease by the mineral lessee, its agents, successors or assigns, shall not interfere with nor hinder the reasonable surface use by the Department of Natural Resources, its Offices or Commissions, as herein above reserved.

NOTE: This tract is located in an area designated by the Louisiana Legislature or the Wildlife and Fisheries Commission as a Public Oyster Seed Ground, Reservation, or area of Calcasieu or Sabine Lake. Proposed projects occurring in these areas will be evaluated on a case by case basis by Louisiana Department of Wildlife & Fisheries. Modifications to proposed project features including, but not limited to, access routes, well sites, flowlines, and appurtenant structures maybe required by the Louisiana Department of Wildlife and Fisheries. In addition, compensatory mitigation will be required to offset unavoidable habitat impacts.

Applicant: LESLIE M. COOPER

Bidder	Cash Payment	Price/ Acre	Rental	Oil	Gas	Other



TRACT 43347 - St. Mary Parish, Louisiana

A portion of all lands located above the mean high water mark, together with lands now or formerly constituting the beds and bottoms of any water body of whatever description or nature belonging to the State of Louisiana which is now located within the boundaries of the Atchafalaya Delta Wildlife Management Area and not presently under mineral lease by the State of Louisiana on July 10, 2013, and more particularly located as follows: Beginning at a point within the Atchafalaya Delta Wildlife Management Area having Coordinates of X = 1,951,728.00 and Y = 290,548.00; thence East 16,045.63 feet to a point having Coordinates of X = 1,967,773.63 and Y = 290,548.00; thence South 78 degrees 40 minutes 33 seconds East 1,931.50 feet to a point having Coordinates of X = 1,969,667.52 and Y = 290,168.73; thence South 7,053.77 feet to a point on the north boundary of State Lease No. 20219 having Coordinates of X = 1,969,667.52 and Y = 283,114.96; thence along the Northern boundary of said State Lease No. 20219 the following courses: North 26 degrees 33 minutes 54 seconds West 821.80 feet to a point having Coordinates of X = 1,969,300.00 and Y = 283,850.00; North 72 degrees 36 minutes 09 seconds West 1,571.91 feet to a point having Coordinates of X = 1,967,800.00 and Y = 284,320.00; thence West 3,800.00 feet to a corner having Coordinates of X = 1,964,000.00 and Y = 284,320.00; thence North 2,227.00 feet to a point having Coordinates of X = 1,964,000.00 and Y = 286,547.00; thence West 12,272.00 feet to a point having Coordinates of X = 1,951,728.00 and Y = 286,547.00; thence North 4,001.00 feet to the point of beginning, containing approximately **1,944.42 acres**, all as more particularly outlined on a plat on file in the Office of Mineral Resources, Department of Natural Resources. All bearings, distances and coordinates are based on Louisiana Coordinate System of 1927, (South Zone).

NOTE: The above description of the Tract nominated for lease has been provided and corrected, where required, exclusively by the nomination party. Any mineral lease selected from this Tract and awarded by the Louisiana State Mineral and Energy Board shall be without warranty of any kind, either express, implied, or statutory, including, but not limited to, the implied warranties of merchantability and fitness for a particular purpose. Should the mineral lease awarded by the Louisiana State Mineral and Energy Board be subsequently modified, cancelled or abrogated due to the existence of conflicting leases, operating agreements, private claims or other future obligations or conditions which may affect all or any portion of the leased Tract, it shall not relieve the Lessee of the obligation to pay any bonus due thereon to the Louisiana State Mineral and Energy Board, nor shall the Louisiana State Mineral and Energy Board be obligated to refund any consideration paid by the Lessor prior to such modification, cancellation, or abrogation, including, but not limited to, bonuses, rentals and royalties.

NOTE: The mineral lease is located in the Atchafalaya Delta WMA under the jurisdiction of the Louisiana Department of Wildlife and Fisheries which has promulgated rules and regulations for the protection of game and

wildlife on the aforesaid Tract and, therefore, shall be subject to said rules and regulations, a copy of which shall be attached to the mineral leases. In addition to the specific rules and regulations applicable, the following shall apply regarding operations under this mineral lease:

- No activities will be allowed without written authorization of the Louisiana Department of Wildlife and Fisheries.
- Proposed projects will be evaluated on a case by case basis. Modifications to proposed project features including but not limited to access routes, spoil placement, well sites, flowlines and appurtenant structures may be required by the Department of Wildlife and Fisheries.
- Compliance with the Atchafalaya Delta WMA regulations will be required unless otherwise specified by the Department of Wildlife and Fisheries.
- Compensatory mitigation will be required to offset unavoidable wetland impacts.
- Compensation and/or oyster seed ground surveys may be required by the Department for potential impacts to productive oyster seed grounds located within the management area.
- Removal of all structures, facilities and equipment will be required within 120 days of abandonment unless otherwise agreed to in writing by the Louisiana Department of Wildlife and Fisheries.
- No activities will be allowed during the hunting season unless approved by the Department.
- This tract is located within the emerging Atchafalaya Delta. No activities will be allowed on emergent islands, sub aerial mudflats or vegetated wetlands. Drilling will be restricted to passes and open water bays. The Louisiana Department of Wildlife and Fisheries (LDWF) shall have discretion to determine access routes. In the event that LDWF approves of dredging for access LDWF shall have discretion to require hydraulic or spray dredging.
- Prior to submitting application for wetland permits to Federal and State permitting agencies the leaseholder shall coordinate project details with the Department of Wildlife and Fisheries. Contact person for the Department will be Mike Windham at (504)284-5268.

Additionally, the Department will require a minimum bonus of \$350.00 per acre and a minimum royalty of 25%.

NOTE: The above described tract may be in the vicinity of existing shell reefs where drilling and dredging operations must be conducted in strict conformity with the regulations adopted by the Louisiana Department of Wildlife and Fisheries and/or the U.S. Corps of Engineers, U.S. Army.

NOTE: The State of Louisiana does hereby reserve, and this lease shall be subject to, the imprescriptible right of surface use in the nature of a servitude in favor of the Department of Natural Resources, including its Offices and Commissions, for the sole purpose of implementing, constructing, servicing and maintaining approved coastal zone management and/or restoration projects. Utilization of any and all rights derived under this lease by the mineral lessee, its agents, successors or assigns, shall not interfere with nor hinder the reasonable surface use by the Department of Natural Resources, its Offices or Commissions, as herein above reserved.

NOTE: This tract is located in an area designated by the Louisiana Legislature or the Wildlife and Fisheries Commission as a Public Oyster Seed Ground, Reservation, or area of Calcasieu or Sabine Lake. Proposed projects occurring in these areas will be evaluated on a case by case basis by Louisiana Department of Wildlife & Fisheries. Modifications to proposed project features including, but not limited to, access routes, well sites, flowlines, and appurtenant structures maybe required by the Louisiana Department of Wildlife and Fisheries. In addition, compensatory mitigation will be required to offset unavoidable habitat impacts.

Applicant: LESLIE M. COOPER

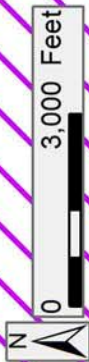
Bidder	Cash Payment	Price/ Acre	Rental	Oil	Gas	Other

Legend

13070052

Wildlife

Active_Leases



ST MARY PARISH

ATCHAFALAYA DELTA WMA

ATCHAFALAYA BAY

P.O.B.

SL 20219

TRACT 43348 - St. Mary Parish, Louisiana

A portion of all lands located above the mean high water mark, together with lands now or formerly constituting the beds and bottoms of any water body of whatever description or nature belonging to the State of Louisiana which is now located within the boundaries of the Atchafalaya Delta Wildlife Management Area and not presently under mineral lease by the State of Louisiana on July 10, 2013, and more particularly located as follows: Beginning at a point within the Atchafalaya Delta Wildlife Management Area being a point having Coordinates of X = 1,969,667.52 and Y = 290,168.73; thence South 78 degrees 40 minutes 33 seconds East 7,235.34 feet to a point having Coordinates of X = 1,976,762.00 and Y = 288,748.00; thence South 2,992.00 feet to the Northeast corner of State Lease No. 20687 having Coordinates of X = 1,976,762.00 and Y = 285,756.00; thence along the boundaries of said State Lease No. 20687 the following courses: West 2,971.00 feet to a point having Coordinates of X = 1,973,791.00 and Y = 285,756.00 and South 4,003.00 feet to its Southwest corner and a point on the North boundary of State Lease No. 20688 having Coordinates of X = 1,973,791.00 and Y = 281,753.00; thence along the boundaries of said State Lease No. 20688 the following courses: West 1,540.00 feet to a point having Coordinates of X = 1,972,251.00 and Y = 281,753.00, South 2,452.00 feet to a point having Coordinates of X = 1,972,251.00 and Y = 279,301.00 and East 4,511.00 feet to a point having Coordinates of X = 1,976,762.00 and Y = 279,301.00; thence South 2,101.00 feet to a point having Coordinates of X = 1,976,762.00 and Y = 277,200.00; thence West 11,236.27 feet to a point on the East boundary of State Lease No. 20527 having Coordinates of X = 1,965,525.73 and Y = 277,200.00; thence North 47 degrees 13 minutes 37 seconds East 1,684.17 feet along the East boundary of said State Lease No. 20527 to its Southeast corner and the Southwest corner of State Lease No. 20526 having Coordinates of X = 1,966,762.00 and Y = 278,343.72; thence North 47 degrees 13 minutes 37 seconds East 5,309.65 feet to a point having Coordinates of X = 1,970,659.54 and Y = 281,949.48 and North 47 degrees 18 minutes 53 seconds West 1,033.27 feet to its Northwest corner and the Northeast corner of State Lease No. 20219 having Coordinates of X = 1,969,900.00 and Y = 282,650.00; thence North 26 degrees 33 minutes 54 seconds West 519.84 feet along the North boundary of said State Lease No. 20219 to a point having Coordinates of X = 1,969,667.52 and Y = 283,114.96; thence North 7,053.77 feet to the point of beginning, containing approximately **1,630.16 acres**, all as more particularly outlined on a plat on file in the Office of Mineral Resources, Department of Natural Resources. All bearings, distances and coordinates are based on Louisiana Coordinate System of 1927, (South Zone).

NOTE: The above description of the Tract nominated for lease has been provided and corrected, where required, exclusively by the nomination party. Any mineral lease selected from this Tract and awarded by the Louisiana State Mineral and Energy Board shall be without warranty of any kind, either express, implied, or statutory, including, but not limited to, the implied warranties of merchantability and fitness for a particular

purpose. Should the mineral lease awarded by the Louisiana State Mineral and Energy Board be subsequently modified, cancelled or abrogated due to the existence of conflicting leases, operating agreements, private claims or other future obligations or conditions which may affect all or any portion of the leased Tract, it shall not relieve the Lessee of the obligation to pay any bonus due thereon to the Louisiana State Mineral and Energy Board, nor shall the Louisiana State Mineral and Energy Board be obligated to refund any consideration paid by the Lessor prior to such modification, cancellation, or abrogation, including, but not limited to, bonuses, rentals and royalties.

NOTE: The mineral lease is located in the Atchafalaya Delta WMA under the jurisdiction of the Louisiana Department of Wildlife and Fisheries which has promulgated rules and regulations for the protection of game and wildlife on the aforesaid Tract and, therefore, shall be subject to said rules and regulations, a copy of which shall be attached to the mineral leases. In addition to the specific rules and regulations applicable, the following shall apply regarding operations under this mineral lease:

- No activities will be allowed without written authorization of the Louisiana Department of Wildlife and Fisheries.
- Proposed projects will be evaluated on a case by case basis. Modifications to proposed project features including but not limited to access routes, spoil placement, well sites, flowlines and appurtenant structures may be required by the Department of Wildlife and Fisheries.
- Compliance with the Atchafalaya Delta WMA regulations will be required unless otherwise specified by the Department of Wildlife and Fisheries.
- Compensatory mitigation will be required to offset unavoidable wetland impacts.
- Compensation and/or oyster seed ground surveys may be required by the Department for potential impacts to productive oyster seed grounds located within the management area.
- Removal of all structures, facilities and equipment will be required within 120 days of abandonment unless otherwise agreed to in writing by the Louisiana Department of Wildlife and Fisheries.
- No activities will be allowed during the hunting season unless approved by the Department.
- This tract is located within the emerging Atchafalaya Delta. No activities will be allowed on emergent islands, sub aerial mudflats or vegetated wetlands. Drilling will be restricted to passes and open water bays. The Louisiana Department of Wildlife and Fisheries (LDWF) shall have discretion to determine access routes. In the event that LDWF approves of dredging for access LDWF shall have discretion to require hydraulic or spray dredging.

- Prior to submitting application for wetland permits to Federal and State permitting agencies the leaseholder shall coordinate project details with the Department of Wildlife and Fisheries. Contact person for the Department will be Mike Windham at (504)284-5268.

Additionally, the Department will require a minimum bonus of \$350.00 per acre and a minimum royalty of 25%.

NOTE: The above described tract may be in the vicinity of existing shell reefs where drilling and dredging operations must be conducted in strict conformity with the regulations adopted by the Louisiana Department of Wildlife and Fisheries and/or the U.S. Corps of Engineers, U.S. Army.

NOTE: The State of Louisiana does hereby reserve, and this lease shall be subject to, the imprescriptible right of surface use in the nature of a servitude in favor of the Department of Natural Resources, including its Offices and Commissions, for the sole purpose of implementing, constructing, servicing and maintaining approved coastal zone management and/or restoration projects. Utilization of any and all rights derived under this lease by the mineral lessee, its agents, successors or assigns, shall not interfere with nor hinder the reasonable surface use by the Department of Natural Resources, its Offices or Commissions, as herein above reserved.

NOTE: This tract is located in an area designated by the Louisiana Legislature or the Wildlife and Fisheries Commission as a Public Oyster Seed Ground, Reservation, or area of Calcasieu or Sabine Lake. Proposed projects occurring in these areas will be evaluated on a case by case basis by Louisiana Department of Wildlife & Fisheries. Modifications to proposed project features including, but not limited to, access routes, well sites, flowlines, and appurtenant structures maybe required by the Louisiana Department of Wildlife and Fisheries. In addition, compensatory mitigation will be required to offset unavoidable habitat impacts.

Applicant: LESLIE M. COOPER

Bidder	Cash Payment	Price/Acre	Rental	Oil	Gas	Other

Legend

13070014

Wildlife

Active_Leases

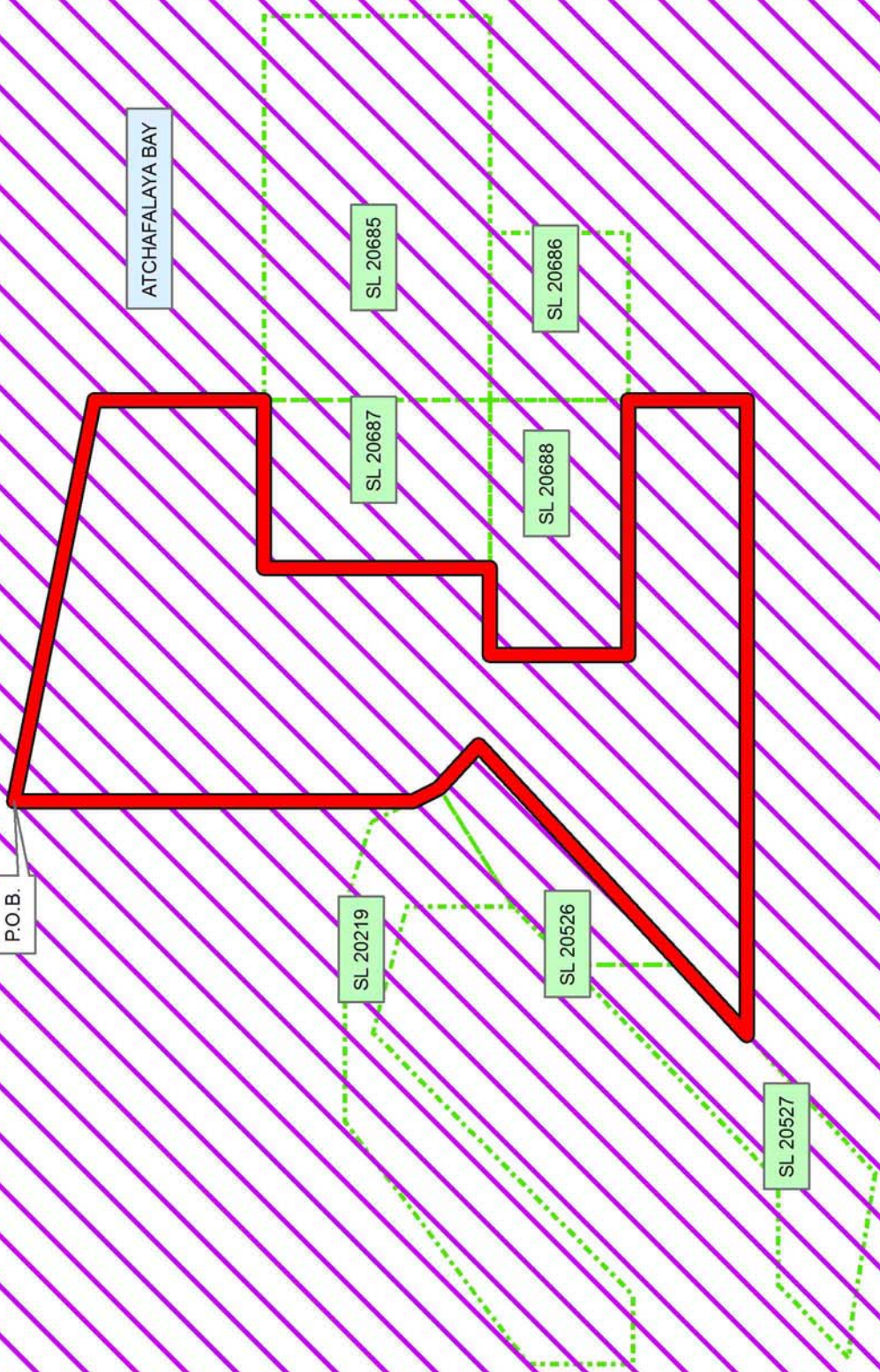


ST MARY PARISH

ATCHAFALAYA DELTA WMA

P.O.B.

ATCHAFALAYA BAY



TRACT 43349 - St. Mary Parish, Louisiana

A portion of all lands located above the mean high water mark, together with lands now or formerly constituting the beds and bottoms of any water body of whatever description or nature belonging to the State of Louisiana which is now located within the boundaries of the Atchafalaya Delta Wildlife Management Area and not presently under mineral lease by the State of Louisiana on July 10, 2013, and more particularly located as follows: Beginning at a point within the Atchafalaya Delta Wildlife Management Area, having Coordinates of X = 2,002,820.00 and Y = 288,748.00; thence East 7,750.00 feet to a point having Coordinates of X = 2,010,570.00 and Y = 288,748.00; thence South 14,048.00 feet to a point having Coordinates of X = 2,010,570.00 and Y = 274,700.00; thence West 7,750.00 feet to a point having Coordinates of X = 2,002,820.00 and Y = 274,700.00; thence North 14,048.00 feet to the point of beginning, containing approximately **2,499.36 acres**, all as more particularly outlined on a plat on file in the Office of Mineral Resources, Department of Natural Resources. All bearings, distances and coordinates are based on Louisiana Coordinate System of 1927, (South Zone).

NOTE: The above description of the Tract nominated for lease has been provided and corrected, where required, exclusively by the nomination party. Any mineral lease selected from this Tract and awarded by the Louisiana State Mineral and Energy Board shall be without warranty of any kind, either express, implied, or statutory, including, but not limited to, the implied warranties of merchantability and fitness for a particular purpose. Should the mineral lease awarded by the Louisiana State Mineral and Energy Board be subsequently modified, cancelled or abrogated due to the existence of conflicting leases, operating agreements, private claims or other future obligations or conditions which may affect all or any portion of the leased Tract, it shall not relieve the Lessee of the obligation to pay any bonus due thereon to the Louisiana State Mineral and Energy Board, nor shall the Louisiana State Mineral and Energy Board be obligated to refund any consideration paid by the Lessor prior to such modification, cancellation, or abrogation, including, but not limited to, bonuses, rentals and royalties.

NOTE: The mineral lease is located in the Atchafalaya Delta WMA under the jurisdiction of the Louisiana Department of Wildlife and Fisheries which has promulgated rules and regulations for the protection of game and wildlife on the aforesaid Tract and, therefore, shall be subject to said rules and regulations, a copy of which shall be attached to the mineral leases. In addition to the specific rules and regulations applicable, the following shall apply regarding operations under this mineral lease:

- No activities will be allowed without written authorization of the Louisiana Department of Wildlife and Fisheries.
- Proposed projects will be evaluated on a case by case basis. Modifications to proposed project features including but not limited to access routes, spoil placement, well sites, flowlines and

appurtenant structures may be required by the Department of Wildlife and Fisheries.

- Compliance with the Atchafalaya Delta WMA regulations will be required unless otherwise specified by the Department of Wildlife and Fisheries.
- Compensatory mitigation will be required to offset unavoidable wetland impacts.
- Compensation and/or oyster seed ground surveys may be required by the Department for potential impacts to productive oyster seed grounds located within the management area.
- Removal of all structures, facilities and equipment will be required within 120 days of abandonment unless otherwise agreed to in writing by the Louisiana Department of Wildlife and Fisheries.
- No activities will be allowed during the hunting season unless approved by the Department.
- This tract is located within the emerging Atchafalaya Delta. No activities will be allowed on emergent islands, sub aerial mudflats or vegetated wetlands. Drilling will be restricted to passes and open water bays. The Louisiana Department of Wildlife and Fisheries (LDWF) shall have discretion to determine access routes. In the event that LDWF approves of dredging for access LDWF shall have discretion to require hydraulic or spray dredging.
- Prior to submitting application for wetland permits to Federal and State permitting agencies the leaseholder shall coordinate project details with the Department of Wildlife and Fisheries. Contact person for the Department will be Mike Windham at (504)284-5268.

Additionally, the Department will require a minimum bonus of \$350.00 per acre and a minimum royalty of 25%.

NOTE: The State of Louisiana does hereby reserve, and this lease shall be subject to, the imprescriptible right of surface use in the nature of a servitude in favor of the Department of Natural Resources, including its Offices and Commissions, for the sole purpose of implementing, constructing, servicing and maintaining approved coastal zone management and/or restoration projects. Utilization of any and all rights derived under this lease by the mineral lessee, its agents, successors or assigns, shall not interfere with nor hinder the reasonable surface use by the Department of Natural Resources, its Offices or Commissions, as herein above reserved.

NOTE: This tract is located in an area designated by the Louisiana Legislature or the Wildlife and Fisheries Commission as a Public Oyster Seed Ground, Reservation, or area of Calcasieu or Sabine Lake. Proposed projects occurring in these areas will be evaluated on a case by case basis by Louisiana Department of Wildlife & Fisheries. Modifications to proposed project features including, but not limited to, access routes,

well sites, flowlines, and appurtenant structures maybe required by the Louisiana Department of Wildlife and Fisheries. In addition, compensatory mitigation will be required to offset unavoidable habitat impacts.

Applicant: LESLIE M. COOPER

Bidder	Cash Payment	Price/ Acre	Rental	Oil	Gas	Other

Legend

13070019

Wildlife



N



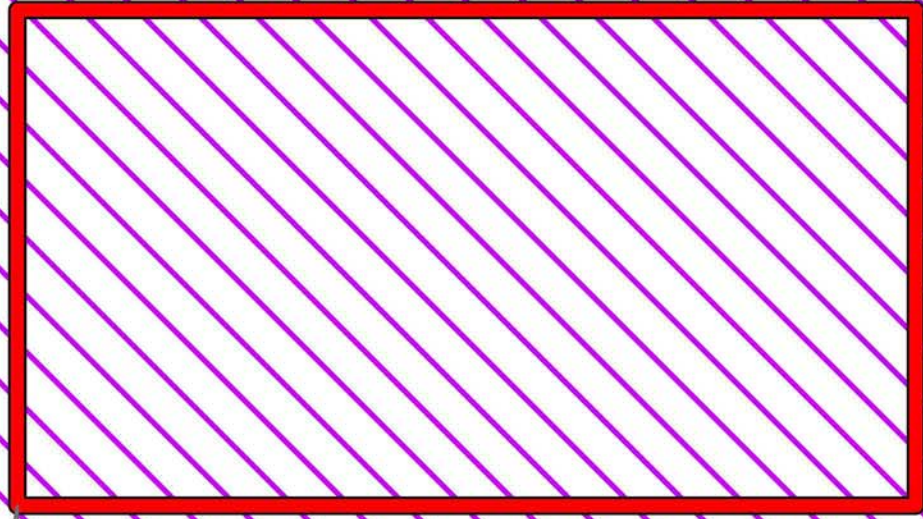
0 3,000 Feet

ST MARY PARISH

ATCHAFALAYA DELTA WMA

P.O.B.

ATCHAFALAYA BAY



TRACT 43350 - St. Mary Parish, Louisiana

A portion of all lands located above the mean high water mark, together with lands now or formerly constituting the beds and bottoms of any water body of whatever description or nature belonging to the State of Louisiana which is now located within the boundaries of the Atchafalaya Delta Wildlife Management Area and not presently under mineral lease by the State of Louisiana on July 10, 2013, and more particularly located as follows: Beginning at a point within the Atchafalaya Delta Wildlife Management Area, having Coordinates of X = 2,010,570.00 and Y = 288,748.00; thence East 7,750.00 feet to a point having Coordinates of X = 2,018,320.00 and Y = 288,748.00; thence South 14,048.00 feet to a point having Coordinates of X = 2,018,320.00 and Y = 274,700.00; thence West 7,750.00 feet to a point having Coordinates of X = 2,010,570.00 and Y = 274,700.00; thence North 14,048.00 feet to the point of beginning, containing approximately **2,499.36 acres**, all as more particularly outlined on a plat on file in the Office of Mineral Resources, Department of Natural Resources. All bearings, distances and coordinates are based on Louisiana Coordinate System of 1927, (South Zone).

NOTE: The above description of the Tract nominated for lease has been provided and corrected, where required, exclusively by the nomination party. Any mineral lease selected from this Tract and awarded by the Louisiana State Mineral and Energy Board shall be without warranty of any kind, either express, implied, or statutory, including, but not limited to, the implied warranties of merchantability and fitness for a particular purpose. Should the mineral lease awarded by the Louisiana State Mineral and Energy Board be subsequently modified, cancelled or abrogated due to the existence of conflicting leases, operating agreements, private claims or other future obligations or conditions which may affect all or any portion of the leased Tract, it shall not relieve the Lessee of the obligation to pay any bonus due thereon to the Louisiana State Mineral and Energy Board, nor shall the Louisiana State Mineral and Energy Board be obligated to refund any consideration paid by the Lessor prior to such modification, cancellation, or abrogation, including, but not limited to, bonuses, rentals and royalties.

NOTE: The mineral lease is located in the Atchafalaya Delta WMA under the jurisdiction of the Louisiana Department of Wildlife and Fisheries which has promulgated rules and regulations for the protection of game and wildlife on the aforesaid Tract and, therefore, shall be subject to said rules and regulations, a copy of which shall be attached to the mineral leases. In addition to the specific rules and regulations applicable, the following shall apply regarding operations under this mineral lease:

- No activities will be allowed without written authorization of the Louisiana Department of Wildlife and Fisheries.
- Proposed projects will be evaluated on a case by case basis. Modifications to proposed project features including but not limited to access routes, spoil placement, well sites, flowlines and

appurtenant structures may be required by the Department of Wildlife and Fisheries.

- Compliance with the Atchafalaya Delta WMA regulations will be required unless otherwise specified by the Department of Wildlife and Fisheries.
- Compensatory mitigation will be required to offset unavoidable wetland impacts.
- Compensation and/or oyster seed ground surveys may be required by the Department for potential impacts to productive oyster seed grounds located within the management area.
- Removal of all structures, facilities and equipment will be required within 120 days of abandonment unless otherwise agreed to in writing by the Louisiana Department of Wildlife and Fisheries.
- No activities will be allowed during the hunting season unless approved by the Department.
- This tract is located within the emerging Atchafalaya Delta. No activities will be allowed on emergent islands, sub aerial mudflats or vegetated wetlands. Drilling will be restricted to passes and open water bays. The Louisiana Department of Wildlife and Fisheries (LDWF) shall have discretion to determine access routes. In the event that LDWF approves of dredging for access LDWF shall have discretion to require hydraulic or spray dredging.
- Prior to submitting application for wetland permits to Federal and State permitting agencies the leaseholder shall coordinate project details with the Department of Wildlife and Fisheries. Contact person for the Department will be Mike Windham at (504)284-5268.

Additionally, the Department will require a minimum bonus of \$350.00 per acre and a minimum royalty of 25%.

NOTE: The State of Louisiana does hereby reserve, and this lease shall be subject to, the imprescriptible right of surface use in the nature of a servitude in favor of the Department of Natural Resources, including its Offices and Commissions, for the sole purpose of implementing, constructing, servicing and maintaining approved coastal zone management and/or restoration projects. Utilization of any and all rights derived under this lease by the mineral lessee, its agents, successors or assigns, shall not interfere with nor hinder the reasonable surface use by the Department of Natural Resources, its Offices or Commissions, as herein above reserved.

NOTE: This tract is located in an area designated by the Louisiana Legislature or the Wildlife and Fisheries Commission as a Public Oyster Seed Ground, Reservation, or area of Calcasieu or Sabine Lake. Proposed projects occurring in these areas will be evaluated on a case by case basis by Louisiana Department of Wildlife & Fisheries. Modifications to proposed project features including, but not limited to, access routes,

well sites, flowlines, and appurtenant structures maybe required by the Louisiana Department of Wildlife and Fisheries. In addition, compensatory mitigation will be required to offset unavoidable habitat impacts.

Applicant: LESLIE M. COOPER

Bidder	Cash Payment	Price/ Acre	Rental	Oil	Gas	Other

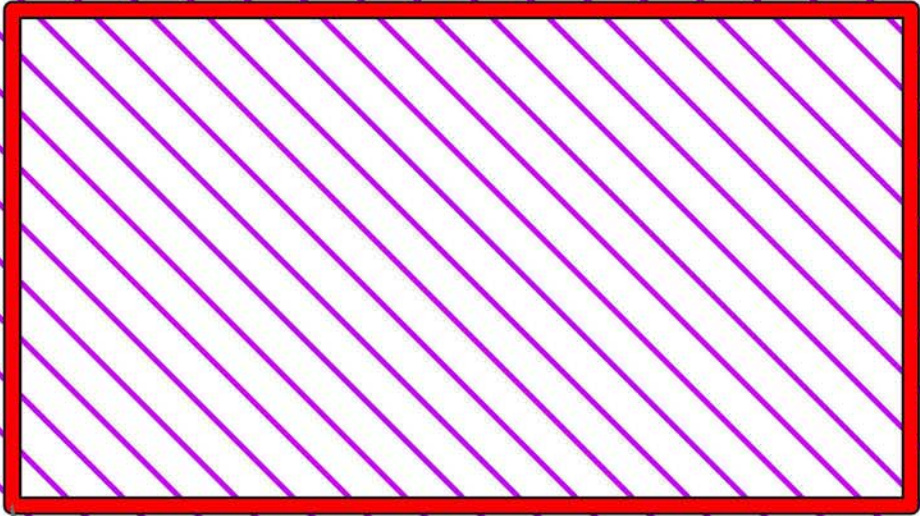
Legend

13070015

Wildlife

ST MARY PARISH

P.O.B.



ATCHAFALAYA DELTA WMA

ATCHAFALAYA BAY

N

0

3,000 Feet

TRACT 43351 - St. Mary and Terrebonne Parishes, Louisiana

A portion of all lands located above the mean high water mark, together with lands now or formerly constituting the beds and bottoms of any water body of whatever description or nature belonging to the State of Louisiana which is now located within the boundaries of the Atchafalaya Delta Wildlife Management Area and not presently under mineral lease by the State of Louisiana on July 10, 2013, and more particularly located as follows: Beginning at a point having Coordinates of X = 2,018,320.00 and Y = 288,748.00; thence East approximately 5,552 feet to a point of intersection with the Eastern boundary of the Atchafalaya Delta Wildlife Management Area having a Coordinate of Y = 288,748.00; thence Southerly and Easterly along the meanders of the boundary of said Atchafalaya Delta Wildlife Management Area to a point of intersection with a North-South line having a Coordinate of X = 2,027,128.00; thence South approximately 7,884 feet to a point having Coordinates of X = 2,027,128.00 and Y = 274,700.00; thence West 8,808.00 feet to a point having Coordinates of X = 2,018,320.00 and Y = 274,700.00; thence North 14,048.00 feet to the point of beginning, containing approximately **2,443 acres**, all as more particularly outlined on a plat on file in the Office of Mineral Resources, Department of Natural Resources. All bearings, distances and coordinates are based on Louisiana Coordinate System of 1927, (South Zone).

NOTE: The above description of the Tract nominated for lease has been provided and corrected, where required, exclusively by the nomination party. Any mineral lease selected from this Tract and awarded by the Louisiana State Mineral and Energy Board shall be without warranty of any kind, either express, implied, or statutory, including, but not limited to, the implied warranties of merchantability and fitness for a particular purpose. Should the mineral lease awarded by the Louisiana State Mineral and Energy Board be subsequently modified, cancelled or abrogated due to the existence of conflicting leases, operating agreements, private claims or other future obligations or conditions which may affect all or any portion of the leased Tract, it shall not relieve the Lessee of the obligation to pay any bonus due thereon to the Louisiana State Mineral and Energy Board, nor shall the Louisiana State Mineral and Energy Board be obligated to refund any consideration paid by the Lessor prior to such modification, cancellation, or abrogation, including, but not limited to, bonuses, rentals and royalties.

NOTE: The mineral lease is located in the Atchafalaya Delta WMA under the jurisdiction of the Louisiana Department of Wildlife and Fisheries which has promulgated rules and regulations for the protection of game and wildlife on the aforesaid Tract and, therefore, shall be subject to said rules and regulations, a copy of which shall be attached to the mineral leases. In addition to the specific rules and regulations applicable, the following shall apply regarding operations under this mineral lease:

- No activities will be allowed without written authorization of the Louisiana Department of Wildlife and Fisheries.
- Proposed projects will be evaluated on a case by case basis. Modifications to proposed project features including but not limited to access routes, spoil placement, well sites, flowlines and appurtenant structures may be required by the Department of Wildlife and Fisheries.
- Compliance with the Atchafalaya Delta WMA regulations will be required unless otherwise specified by the Department of Wildlife and Fisheries.
- Compensatory mitigation will be required to offset unavoidable wetland impacts.
- Compensation and/or oyster seed ground surveys may be required by the Department for potential impacts to productive oyster seed grounds located within the management area.
- Removal of all structures, facilities and equipment will be required within 120 days of abandonment unless otherwise agreed to in writing by the Louisiana Department of Wildlife and Fisheries.
- No activities will be allowed during the hunting season unless approved by the Department.
- This tract is located within the emerging Atchafalaya Delta. No activities will be allowed on emergent islands, sub aerial mudflats or vegetated wetlands. Drilling will be restricted to passes and open water bays. The Louisiana Department of Wildlife and Fisheries (LDWF) shall have discretion to determine access routes. In the event that LDWF approves of dredging for access LDWF shall have discretion to require hydraulic or spray dredging.
- Prior to submitting application for wetland permits to Federal and State permitting agencies the leaseholder shall coordinate project details with the Department of Wildlife and Fisheries. Contact person for the Department will be Mike Windham at (504)284-5268.

Additionally, the Department will require a minimum bonus of \$350.00 per acre and a minimum royalty of 25%.

NOTE: The State of Louisiana does hereby reserve, and this lease shall be subject to, the imprescriptible right of surface use in the nature of a servitude in favor of the Department of Natural Resources, including its Offices and Commissions, for the sole purpose of implementing, constructing, servicing and maintaining approved coastal zone management and/or restoration projects. Utilization of any and all rights derived under this lease by the mineral lessee, its agents, successors or assigns, shall not interfere with nor hinder the reasonable surface use by the Department of Natural Resources, its Offices or Commissions, as herein above reserved.

NOTE: This tract is located in an area designated by the Louisiana Legislature or the Wildlife and Fisheries Commission as a Public Oyster Seed Ground, Reservation, or area of Calcasieu or Sabine Lake. Proposed projects occurring in these areas will be evaluated on a case by case basis by Louisiana Department of Wildlife & Fisheries. Modifications to proposed project features including, but not limited to, access routes, well sites, flowlines, and appurtenant structures maybe required by the Louisiana Department of Wildlife and Fisheries. In addition, compensatory mitigation will be required to offset unavoidable habitat impacts.

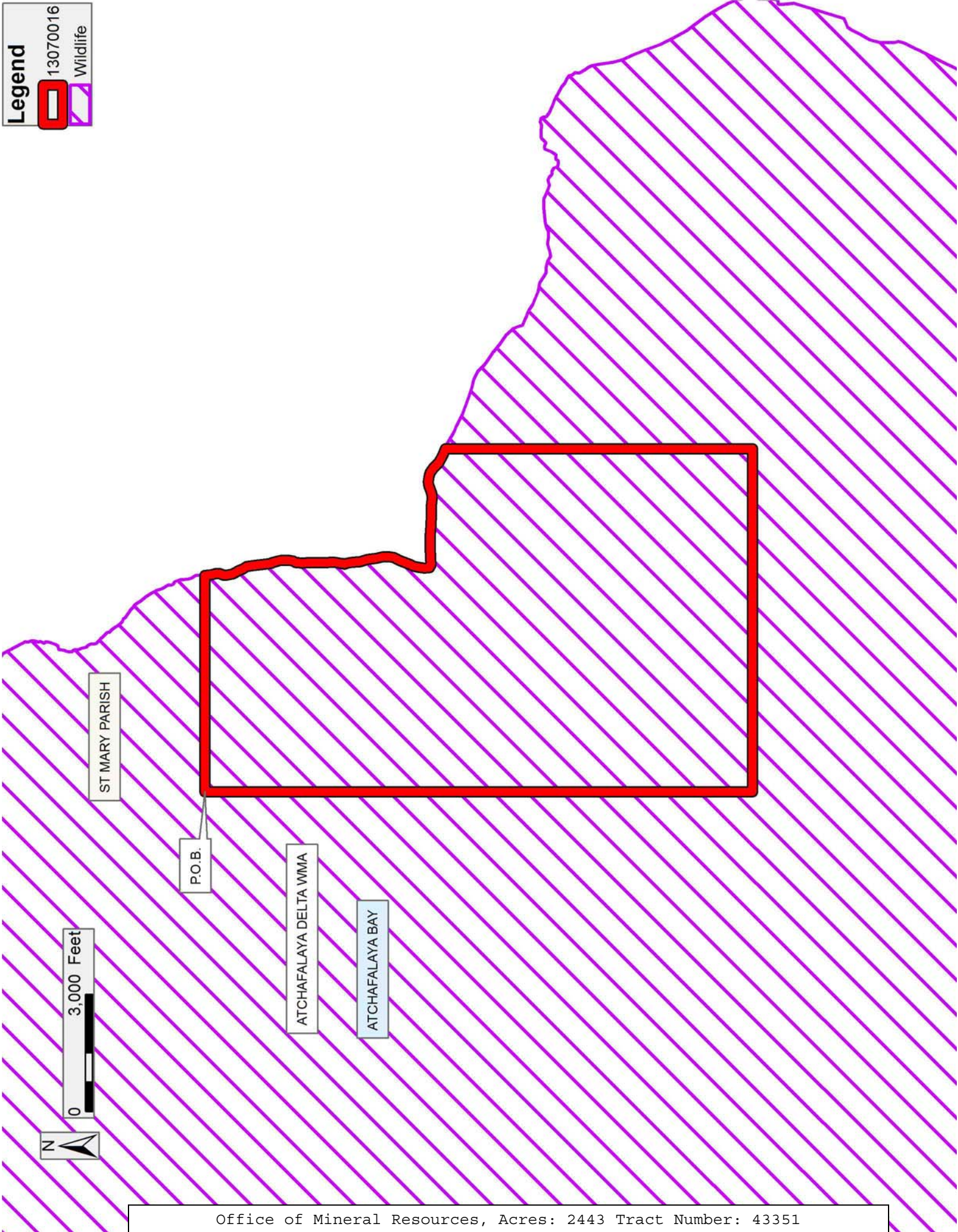
Applicant: LESLIE M. COOPER

Bidder	Cash Payment	Price/ Acre	Rental	Oil	Gas	Other

Legend

13070016

Wildlife



TRACT 43352 - St. Mary Parish, Louisiana

A portion of all lands located above the mean high water mark, together with lands now or formerly constituting the beds and bottoms of any water body of whatever description or nature belonging to the State of Louisiana which is now located within the boundaries of the Atchafalaya Delta Wildlife Management Area and not presently under mineral lease by the State of Louisiana on July 10, 2013, and more particularly located as follows: Beginning at a point within the Atchafalaya Delta Wildlife Management Area having Coordinates of X = 1,976,762.00 and Y = 288,748.00; thence East 10,000.00 feet to a point having Coordinates of X = 1,986,762.00 and Y = 288,748.00; thence South 16,248.00 feet to a point being the Northeast corner of State Lease No. 20255 having Coordinates of X = 1,986,762.00 and Y = 272,500.00; thence West 1,068.76 feet along the North boundary of said State Lease No. 20255 to the Northeast corner of State Lease No. 19957 having Coordinates of X = 1,985,693.24 and Y = 272,500.00; thence West 497.24 feet along the North boundary of said State Lease No. 19957 to the Southeast corner of State Lease No. 20689 having Coordinates of X = 1,985,196.00 and Y = 272,500.00; thence along the East and North boundary of said State Lease No. 20689 the following courses and distances: North 00 degrees 10 minutes 31 seconds West 1,308.01 feet to a corner having Coordinates of X = 1,985,192.00 and Y = 273,808.00, North 1,196.00 feet to a corner having Coordinates of X = 1,985,192.00 and Y = 275,004.00 and North 89 degrees 23 minutes 00 seconds West 2,416.14 feet to the Southeast corner of State Lease No. 20691 having Coordinates of X = 1,982,776.00 and Y = 275,030.00; thence along the East, North and West boundary of said State Lease No. 20691 the following courses and distances: North 196.00 feet to a corner having Coordinates of X = 1,982,776.00 and Y = 275,226.00, South 89 degrees 34 minutes 08 seconds West 3,722.11 feet to a corner having Coordinates of X = 1,979,054.00 and Y = 275,198.00; thence West 254.00 feet to a point having Coordinates of X = 1,978,800.00 and Y = 275,198.00; thence North 2,002.00 feet to a point having Coordinates of X = 1,978,800.00 and Y = 277,200.00; thence West 2,038.00 feet to a point having Coordinates of X = 1,976,762.00 and Y = 277,200.00; thence North 2,101.00 feet to the Southwest corner of State Lease No. 20686 having Coordinates of X = 1,976,762.00 and Y = 279,301.00; thence along the boundaries of said State Lease No. 20686 the following courses: East 2,964.00 feet to a point having Coordinates of X = 1,979,726.00 and Y = 279,301.00 and North 2,452.00 feet to its Northeast corner and a point on the South boundary of State Lease No. 20685 having Coordinates of X = 1,979,726.00 and Y = 281,753.00; thence along the boundaries of said State Lease No. 20685 the following courses: East 3,841.00 feet to a point having Coordinates of X = 1,983,567.00 and Y = 281,753.00, North 4,003.00 feet to a point having Coordinates of X = 1,983,567.00 and Y = 285,756.00 and West 6,805.00 feet to its Northwest corner having Coordinates of X = 1,976,762.00 and Y = 285,756.00; thence North 2,992.00 feet to the point of beginning, containing approximately **2,330.81 acres**, all as more particularly outlined on a plat on file in the Office of Mineral Resources, Department of Natural Resources. All

bearings, distances and coordinates are based on Louisiana Coordinate System of 1927, (South Zone).

NOTE: The above description of the Tract nominated for lease has been provided and corrected, where required, exclusively by the nomination party. Any mineral lease selected from this Tract and awarded by the Louisiana State Mineral and Energy Board shall be without warranty of any kind, either express, implied, or statutory, including, but not limited to, the implied warranties of merchantability and fitness for a particular purpose. Should the mineral lease awarded by the Louisiana State Mineral and Energy Board be subsequently modified, cancelled or abrogated due to the existence of conflicting leases, operating agreements, private claims or other future obligations or conditions which may affect all or any portion of the leased Tract, it shall not relieve the Lessee of the obligation to pay any bonus due thereon to the Louisiana State Mineral and Energy Board, nor shall the Louisiana State Mineral and Energy Board be obligated to refund any consideration paid by the Lessor prior to such modification, cancellation, or abrogation, including, but not limited to, bonuses, rentals and royalties.

NOTE: The mineral lease is located in the Atchafalaya Delta WMA under the jurisdiction of the Louisiana Department of Wildlife and Fisheries which has promulgated rules and regulations for the protection of game and wildlife on the aforesaid Tract and, therefore, shall be subject to said rules and regulations, a copy of which shall be attached to the mineral leases. In addition to the specific rules and regulations applicable, the following shall apply regarding operations under this mineral lease:

- No activities will be allowed without written authorization of the Louisiana Department of Wildlife and Fisheries.
- Proposed projects will be evaluated on a case by case basis. Modifications to proposed project features including but not limited to access routes, spoil placement, well sites, flowlines and appurtenant structures may be required by the Department of Wildlife and Fisheries.
- Compliance with the Atchafalaya Delta WMA regulations will be required unless otherwise specified by the Department of Wildlife and Fisheries.
- Compensatory mitigation will be required to offset unavoidable wetland impacts.
- Compensation and/or oyster seed ground surveys may be required by the Department for potential impacts to productive oyster seed grounds located within the management area.
- Removal of all structures, facilities and equipment will be required within 120 days of abandonment unless otherwise agreed to in writing by the Louisiana Department of Wildlife and Fisheries.
- No activities will be allowed during the hunting season unless approved by the Department.

- This tract is located within the emerging Atchafalaya Delta. No activities will be allowed on emergent islands, sub aerial mudflats or vegetated wetlands. Drilling will be restricted to passes and open water bays. The Louisiana Department of Wildlife and Fisheries (LDWF) shall have discretion to determine access routes. In the event that LDWF approves of dredging for access LDWF shall have discretion to require hydraulic or spray dredging.
- Prior to submitting application for wetland permits to Federal and State permitting agencies the leaseholder shall coordinate project details with the Department of Wildlife and Fisheries. Contact person for the Department will be Mike Windham at (504)284-5268.

Additionally, the Department will require a minimum bonus of \$350.00 per acre and a minimum royalty of 25%.

NOTE: The State of Louisiana does hereby reserve, and this lease shall be subject to, the imprescriptible right of surface use in the nature of a servitude in favor of the Department of Natural Resources, including its Offices and Commissions, for the sole purpose of implementing, constructing, servicing and maintaining approved coastal zone management and/or restoration projects. Utilization of any and all rights derived under this lease by the mineral lessee, its agents, successors or assigns, shall not interfere with nor hinder the reasonable surface use by the Department of Natural Resources, its Offices or Commissions, as herein above reserved.

NOTE: This tract is located in an area designated by the Louisiana Legislature or the Wildlife and Fisheries Commission as a Public Oyster Seed Ground, Reservation, or area of Calcasieu or Sabine Lake. Proposed projects occurring in these areas will be evaluated on a case by case basis by Louisiana Department of Wildlife & Fisheries. Modifications to proposed project features including, but not limited to, access routes, well sites, flowlines, and appurtenant structures maybe required by the Louisiana Department of Wildlife and Fisheries. In addition, compensatory mitigation will be required to offset unavoidable habitat impacts.

Bidder	Cash Payment	Price/Acre	Rental	Oil	Gas	Other

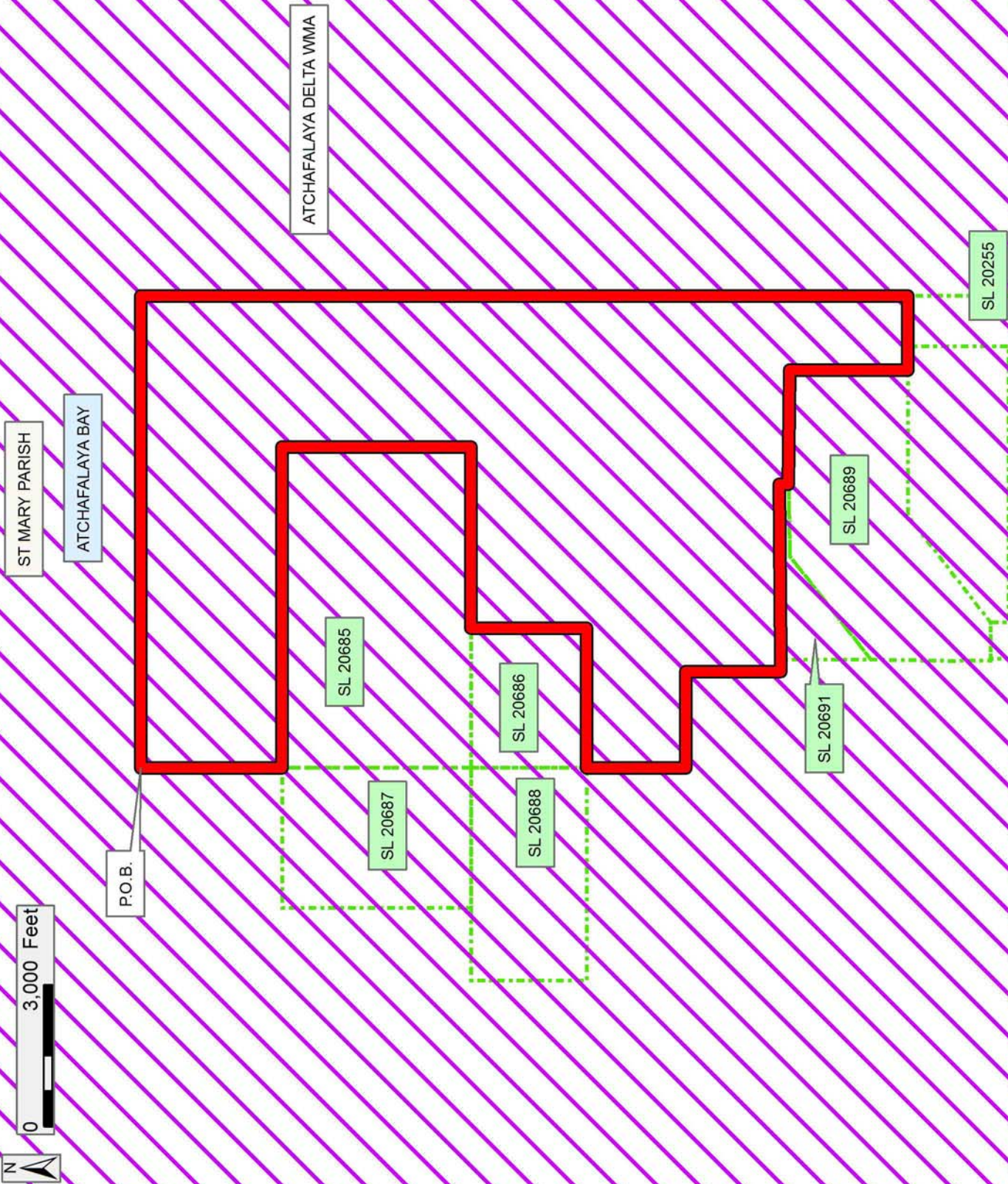
Applicant: LESLIE M. COOPER

Legend

13070020

Wildlife

Active_Leases



TRACT 43353 - St. Mary Parish, Louisiana

A portion of all lands located above the mean high water mark, together with lands now or formerly constituting the beds and bottoms of any water body of whatever description or nature belonging to the State of Louisiana which is now located within the boundaries of the Atchafalaya Delta Wildlife Management Area and not presently under mineral lease by the State of Louisiana on July 10, 2013, and more particularly located as follows: Beginning at a point within the Atchafalaya Delta Wildlife Management Area, having Coordinates of X = 1,986,762.00 and Y = 288,748.00; thence East 7,677.00 feet to a point having Coordinates of X = 1,994,439.00 and Y = 288,748.00; thence South 14,048.00 feet to a point having Coordinates of X = 1,994,439.00 and Y = 274,700.00; thence West 7,677.00 feet to a point having Coordinates of X = 1,986,762.00 and Y = 274,700.00; thence North 14,048.00 feet to the point of beginning, containing approximately **2,475.81 acres**, all as more particularly outlined on a plat on file in the Office of Mineral Resources, Department of Natural Resources. All bearings, distances and coordinates are based on Louisiana Coordinate System of 1927, (South Zone).

NOTE: The above description of the Tract nominated for lease has been provided and corrected, where required, exclusively by the nomination party. Any mineral lease selected from this Tract and awarded by the Louisiana State Mineral and Energy Board shall be without warranty of any kind, either express, implied, or statutory, including, but not limited to, the implied warranties of merchantability and fitness for a particular purpose. Should the mineral lease awarded by the Louisiana State Mineral and Energy Board be subsequently modified, cancelled or abrogated due to the existence of conflicting leases, operating agreements, private claims or other future obligations or conditions which may affect all or any portion of the leased Tract, it shall not relieve the Lessee of the obligation to pay any bonus due thereon to the Louisiana State Mineral and Energy Board, nor shall the Louisiana State Mineral and Energy Board be obligated to refund any consideration paid by the Lessor prior to such modification, cancellation, or abrogation, including, but not limited to, bonuses, rentals and royalties.

NOTE: The mineral lease is located in the Atchafalaya Delta WMA under the jurisdiction of the Louisiana Department of Wildlife and Fisheries which has promulgated rules and regulations for the protection of game and wildlife on the aforesaid Tract and, therefore, shall be subject to said rules and regulations, a copy of which shall be attached to the mineral leases. In addition to the specific rules and regulations applicable, the following shall apply regarding operations under this mineral lease:

- No activities will be allowed without written authorization of the Louisiana Department of Wildlife and Fisheries.
- Proposed projects will be evaluated on a case by case basis. Modifications to proposed project features including but not limited to access routes, spoil placement, well sites, flowlines and

appurtenant structures may be required by the Department of Wildlife and Fisheries.

- Compliance with the Atchafalaya Delta WMA regulations will be required unless otherwise specified by the Department of Wildlife and Fisheries.
- Compensatory mitigation will be required to offset unavoidable wetland impacts.
- Compensation and/or oyster seed ground surveys may be required by the Department for potential impacts to productive oyster seed grounds located within the management area.
- Removal of all structures, facilities and equipment will be required within 120 days of abandonment unless otherwise agreed to in writing by the Louisiana Department of Wildlife and Fisheries.
- No activities will be allowed during the hunting season unless approved by the Department.
- This tract is located within the emerging Atchafalaya Delta. No activities will be allowed on emergent islands, sub aerial mudflats or vegetated wetlands. Drilling will be restricted to passes and open water bays. The Louisiana Department of Wildlife and Fisheries (LDWF) shall have discretion to determine access routes. In the event that LDWF approves of dredging for access LDWF shall have discretion to require hydraulic or spray dredging.
- Prior to submitting application for wetland permits to Federal and State permitting agencies the leaseholder shall coordinate project details with the Department of Wildlife and Fisheries. Contact person for the Department will be Mike Windham at (504)284-5268.

Additionally, the Department will require a minimum bonus of \$350.00 per acre and a minimum royalty of 25%.

NOTE: The State of Louisiana does hereby reserve, and this lease shall be subject to, the imprescriptible right of surface use in the nature of a servitude in favor of the Department of Natural Resources, including its Offices and Commissions, for the sole purpose of implementing, constructing, servicing and maintaining approved coastal zone management and/or restoration projects. Utilization of any and all rights derived under this lease by the mineral lessee, its agents, successors or assigns, shall not interfere with nor hinder the reasonable surface use by the Department of Natural Resources, its Offices or Commissions, as herein above reserved.

NOTE: This tract is located in an area designated by the Louisiana Legislature or the Wildlife and Fisheries Commission as a Public Oyster Seed Ground, Reservation, or area of Calcasieu or Sabine Lake. Proposed projects occurring in these areas will be evaluated on a case by case basis by Louisiana Department of Wildlife & Fisheries. Modifications to proposed project features including, but not limited to, access routes,

well sites, flowlines, and appurtenant structures maybe required by the Louisiana Department of Wildlife and Fisheries. In addition, compensatory mitigation will be required to offset unavoidable habitat impacts.

Applicant: LESLIE M. COOPER

Bidder	Cash Payment	Price/ Acre	Rental	Oil	Gas	Other

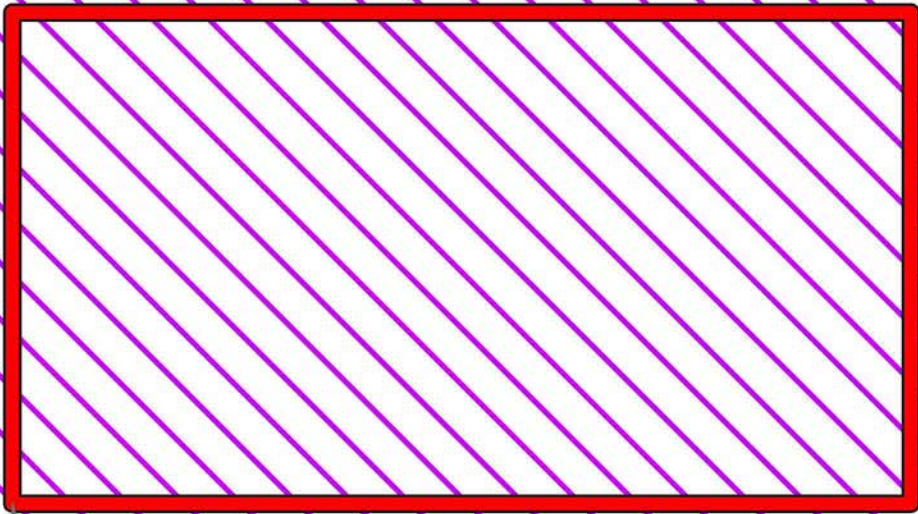
Legend

13070017

Wildlife


ST MARY PARISH

ATCHAFALAYA DELTA WMA




P.O.B.

ATCHAFALAYA BAY



N



0 3,000 Feet

TRACT 43354 - St. Mary Parish, Louisiana

A portion of all lands located above the mean high water mark, together with lands now or formerly constituting the beds and bottoms of any water body of whatever description or nature belonging to the State of Louisiana which is now located within the boundaries of the Atchafalaya Delta Wildlife Management Area and not presently under mineral lease by the State of Louisiana on July 10, 2013, and more particularly located as follows: Beginning at a point within the Atchafalaya Delta Wildlife Management Area, having Coordinates of X = 1,994,439.00 and Y = 288,748.00; thence East 1,000.00 feet to a point being the Northwest corner of Operating Agreement 0311 having Coordinates of X = 1,995,439.00 and Y = 288,748.00; thence along the boundary of said Operating Agreement 0311 the following courses: South 2,568.00 feet, East 4,353.00 feet and North 2,568.00 feet to a point being its Northeast corner having Coordinates of X = 1,999,792.00 and Y = 288,748.00; thence East 3,028.00 feet to a point having Coordinates of X = 2,002,820.00 and Y = 288,748.00; thence South 14,048.00 feet to a point having Coordinates of X = 2,002,820.00 and Y = 274,700.00; thence West 8,381.00 feet to a point having Coordinates of X = 1,994,439.00 and Y = 274,700.00; thence North 14,048.00 feet to the point of beginning, containing approximately **2,446.23 acres**, all as more particularly outlined on a plat on file in the Office of Mineral Resources, Department of Natural Resources. All bearings, distances and coordinates are based on Louisiana Coordinate System of 1927, (South Zone).

NOTE: The above description of the Tract nominated for lease has been provided and corrected, where required, exclusively by the nomination party. Any mineral lease selected from this Tract and awarded by the Louisiana State Mineral and Energy Board shall be without warranty of any kind, either express, implied, or statutory, including, but not limited to, the implied warranties of merchantability and fitness for a particular purpose. Should the mineral lease awarded by the Louisiana State Mineral and Energy Board be subsequently modified, cancelled or abrogated due to the existence of conflicting leases, operating agreements, private claims or other future obligations or conditions which may affect all or any portion of the leased Tract, it shall not relieve the Lessee of the obligation to pay any bonus due thereon to the Louisiana State Mineral and Energy Board, nor shall the Louisiana State Mineral and Energy Board be obligated to refund any consideration paid by the Lessor prior to such modification, cancellation, or abrogation, including, but not limited to, bonuses, rentals and royalties.

NOTE: The mineral lease is located in the Atchafalaya Delta WMA under the jurisdiction of the Louisiana Department of Wildlife and Fisheries which has promulgated rules and regulations for the protection of game and wildlife on the aforesaid Tract and, therefore, shall be subject to said rules and regulations, a copy of which shall be attached to the mineral leases. In addition to the specific rules and regulations applicable, the following shall apply regarding operations under this mineral lease:

- No activities will be allowed without written authorization of the Louisiana Department of Wildlife and Fisheries.
- Proposed projects will be evaluated on a case by case basis. Modifications to proposed project features including but not limited to access routes, spoil placement, well sites, flowlines and appurtenant structures may be required by the Department of Wildlife and Fisheries.
- Compliance with the Atchafalaya Delta WMA regulations will be required unless otherwise specified by the Department of Wildlife and Fisheries.
- Compensatory mitigation will be required to offset unavoidable wetland impacts.
- Compensation and/or oyster seed ground surveys may be required by the Department for potential impacts to productive oyster seed grounds located within the management area.
- Removal of all structures, facilities and equipment will be required within 120 days of abandonment unless otherwise agreed to in writing by the Louisiana Department of Wildlife and Fisheries.
- No activities will be allowed during the hunting season unless approved by the Department.
- This tract is located within the emerging Atchafalaya Delta. No activities will be allowed on emergent islands, sub aerial mudflats or vegetated wetlands. Drilling will be restricted to passes and open water bays. The Louisiana Department of Wildlife and Fisheries (LDWF) shall have discretion to determine access routes. In the event that LDWF approves of dredging for access LDWF shall have discretion to require hydraulic or spray dredging.
- Prior to submitting application for wetland permits to Federal and State permitting agencies the leaseholder shall coordinate project details with the Department of Wildlife and Fisheries. Contact person for the Department will be Mike Windham at (504)284-5268.

Additionally, the Department will require a minimum bonus of \$350.00 per acre and a minimum royalty of 25%.

NOTE: The State of Louisiana does hereby reserve, and this lease shall be subject to, the imprescriptible right of surface use in the nature of a servitude in favor of the Department of Natural Resources, including its Offices and Commissions, for the sole purpose of implementing, constructing, servicing and maintaining approved coastal zone management and/or restoration projects. Utilization of any and all rights derived under this lease by the mineral lessee, its agents, successors or assigns, shall not interfere with nor hinder the reasonable surface use by the Department of Natural Resources, its Offices or Commissions, as herein above reserved.

NOTE: This tract is located in an area designated by the Louisiana Legislature or the Wildlife and Fisheries Commission as a Public Oyster Seed Ground, Reservation, or area of Calcasieu or Sabine Lake. Proposed projects occurring in these areas will be evaluated on a case by case basis by Louisiana Department of Wildlife & Fisheries. Modifications to proposed project features including, but not limited to, access routes, well sites, flowlines, and appurtenant structures maybe required by the Louisiana Department of Wildlife and Fisheries. In addition, compensatory mitigation will be required to offset unavoidable habitat impacts.

Applicant: LESLIE M. COOPER

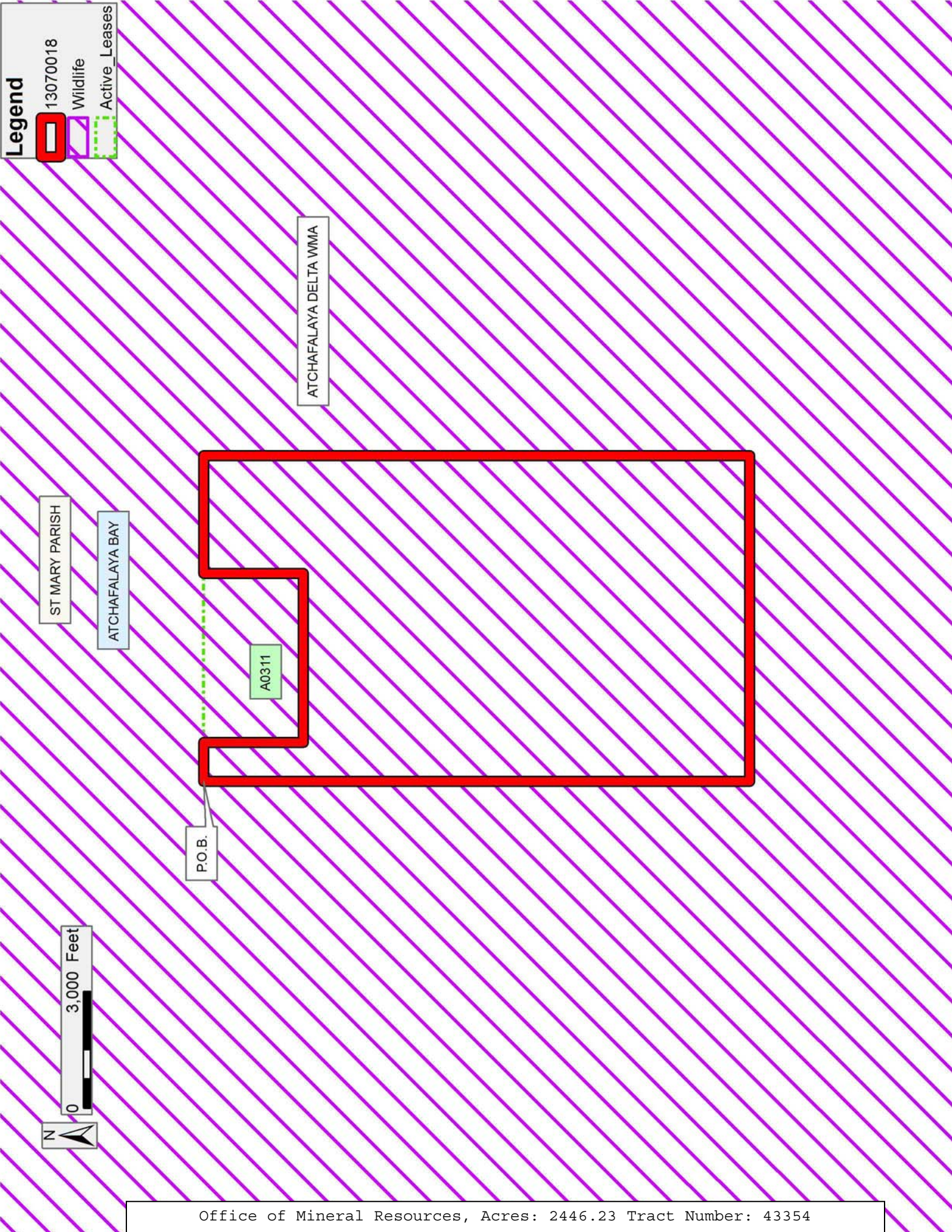
Bidder	Cash Payment	Price/ Acre	Rental	Oil	Gas	Other

Legend

13070018

Wildlife

Active_Leases



TRACT 43355 - St. Mary Parish, Louisiana

A portion of all lands located above the mean high water mark, together with lands now or formerly constituting the beds and bottoms of any water body of whatever description or nature belonging to the State of Louisiana which is now located within the boundaries of the Atchafalaya Delta Wildlife Management Area and not presently under mineral lease by the State of Louisiana on July 10, 2013, and more particularly located as follows: Beginning at a point within the Atchafalaya Delta Wildlife Management Area having Coordinates of X = 1,946,762.00 and Y = 286,547.00; thence East 17,238.00 feet to a point having Coordinates of X = 1,964,000.00 and Y = 286,547.00; thence South 2,227.00 feet to the Northernmost Northwest corner of State Lease No. 20219 having Coordinates of X = 1,964,000.00 and Y = 284,320.00; thence South 52 degrees 56 minutes 24 seconds West 2,369.55 feet along the boundary of said State Lease No. 20219 to a point being the Northeast corner of State Lease No. 21052 having Coordinates of X = 1,962,109.09 and Y = 282,891.99; thence along the boundary of said State Lease No. 21052 the following courses: North 77 degrees 09 minutes 37 seconds West 2,182.79 feet to a point having Coordinates of X = 1,959,980.88 and Y = 283,377.06, South 56 degrees 37 minutes 05 seconds West 2,370.60 feet to a point having Coordinates of X = 1,958,001.38 and Y = 282,072.72, South 77 degrees 54 minutes 20 seconds West 1,977.39 feet to a point having Coordinates of X = 1,956,067.88 and Y = 281,658.41, South 41 degrees 39 minutes 41 seconds West 2,608.60 feet to a point having Coordinates of X = 1,954,333.88 and Y = 279,709.56, and South 31 degrees 08 minutes 18 seconds East 2,580.70 feet to a point on the Northern boundary of State Lease No. 20367 having Coordinates of X = 1,955,668.38 and Y = 277,500.68; thence South 59 degrees 51 minutes 40 seconds West 4,150.70 feet along the boundary of said State Lease No. 20367 to a point having Coordinates of X = 1,952,078.80 and Y = 275,416.63; thence North 1,241.18 feet to the Southeast corner of State Lease No. 20525 having Coordinates of X = 1,952,078.80 and Y = 276,657.81; thence along the boundary of said State Lease No. 20525 the following courses: North 4,905.21 feet and West 5,316.80 feet to its Northwest corner having Coordinates of X = 1,946,762.00 and Y = 281,563.02; thence North 4,983.98 feet to the point of beginning, containing approximately **2,105.62 acres**, all as more particularly outlined on a plat on file in the Office of Mineral Resources, Department of Natural Resources. All bearings, distances and coordinates are based on Louisiana Coordinate System of 1927, (South Zone).

NOTE: The above description of the Tract nominated for lease has been provided and corrected, where required, exclusively by the nomination party. Any mineral lease selected from this Tract and awarded by the Louisiana State Mineral and Energy Board shall be without warranty of any kind, either express, implied, or statutory, including, but not limited to, the implied warranties of merchantability and fitness for a particular purpose. Should the mineral lease awarded by the Louisiana State Mineral and Energy Board be subsequently modified, cancelled or abrogated due to the existence of conflicting leases, operating agreements, private claims

or other future obligations or conditions which may affect all or any portion of the leased Tract, it shall not relieve the Lessee of the obligation to pay any bonus due thereon to the Louisiana State Mineral and Energy Board, nor shall the Louisiana State Mineral and Energy Board be obligated to refund any consideration paid by the Lessor prior to such modification, cancellation, or abrogation, including, but not limited to, bonuses, rentals and royalties.

NOTE: The mineral lease is located in the Atchafalaya Delta WMA under the jurisdiction of the Louisiana Department of Wildlife and Fisheries which has promulgated rules and regulations for the protection of game and wildlife on the aforesaid Tract and, therefore, shall be subject to said rules and regulations, a copy of which shall be attached to the mineral leases. In addition to the specific rules and regulations applicable, the following shall apply regarding operations under this mineral lease:

- No activities will be allowed without written authorization of the Louisiana Department of Wildlife and Fisheries.
- Proposed projects will be evaluated on a case by case basis. Modifications to proposed project features including but not limited to access routes, spoil placement, well sites, flowlines and appurtenant structures may be required by the Department of Wildlife and Fisheries.
- Compliance with the Atchafalaya Delta WMA regulations will be required unless otherwise specified by the Department of Wildlife and Fisheries.
- Compensatory mitigation will be required to offset unavoidable wetland impacts.
- Compensation and/or oyster seed ground surveys may be required by the Department for potential impacts to productive oyster seed grounds located within the management area.
- Removal of all structures, facilities and equipment will be required within 120 days of abandonment unless otherwise agreed to in writing by the Louisiana Department of Wildlife and Fisheries.
- No activities will be allowed during the hunting season unless approved by the Department.
- This tract is located within the emerging Atchafalaya Delta. No activities will be allowed on emergent islands, sub aerial mudflats or vegetated wetlands. Drilling will be restricted to passes and open water bays. The Louisiana Department of Wildlife and Fisheries (LDWF) shall have discretion to determine access routes. In the event that LDWF approves of dredging for access LDWF shall have discretion to require hydraulic or spray dredging.
- Prior to submitting application for wetland permits to Federal and State permitting agencies the leaseholder shall coordinate project details with the Department of Wildlife and Fisheries. Contact person for the Department will be Mike Windham at (504)284-5268.

Additionally, the Department will require a minimum bonus of \$350.00 per acre and a minimum royalty of 25%.

NOTE: The above described tract may be in the vicinity of existing shell reefs where drilling and dredging operations must be conducted in strict conformity with the regulations adopted by the Louisiana Department of Wildlife and Fisheries and/or the U.S. Corps of Engineers, U.S. Army.

NOTE: The State of Louisiana does hereby reserve, and this lease shall be subject to, the imprescriptible right of surface use in the nature of a servitude in favor of the Department of Natural Resources, including its Offices and Commissions, for the sole purpose of implementing, constructing, servicing and maintaining approved coastal zone management and/or restoration projects. Utilization of any and all rights derived under this lease by the mineral lessee, its agents, successors or assigns, shall not interfere with nor hinder the reasonable surface use by the Department of Natural Resources, its Offices or Commissions, as herein above reserved.

NOTE: This tract is located in an area designated by the Louisiana Legislature or the Wildlife and Fisheries Commission as a Public Oyster Seed Ground, Reservation, or area of Calcasieu or Sabine Lake. Proposed projects occurring in these areas will be evaluated on a case by case basis by Louisiana Department of Wildlife & Fisheries. Modifications to proposed project features including, but not limited to, access routes, well sites, flowlines, and appurtenant structures maybe required by the Louisiana Department of Wildlife and Fisheries. In addition, compensatory mitigation will be required to offset unavoidable habitat impacts.

Applicant: LESLIE M. COOPER

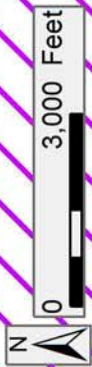
Bidder	Cash Payment	Price/ Acre	Rental	Oil	Gas	Other

Legend

13070043

Wildlife

Active_Leases



ST MARY PARISH

ATCHAFALAYA BAY

ATCHAFALAYA DELTA WMA

P.O.B.

SL 20219

SL 21052

SL 20367

SL 20525