

TRACT 43732 - Caddo Parish, Louisiana

A certain Tract of land, excluding the beds and bottoms of all navigable waters, belonging to and not presently under mineral lease from Caddo Parish Commission on January 8, 2014, being more fully described as follows: Certain Road dedications in the Cottonwood Farms Subdivision located in Section 29, Township 20 North, Range 14 West, known as Crane Road, **limited to the depths below 3,000 feet below the surface**, containing **.96 acres**, all as more particularly outlined on a plat on file in the Office of Mineral Resources, Department of Natural Resources. The description is based on information provided by the State Agency regarding location and ownership of surface and mineral rights. All bearings, distances and coordinates, if applicable, are based on Louisiana Coordinate System of 1927, (North or South Zone).

NOTE: The above description of the Tract nominated for lease has been provided and corrected, where required, exclusively by the nomination party. Any mineral lease selected from this Tract and awarded by the Louisiana State Mineral and Energy Board shall be without warranty of any kind, either express, implied, or statutory, including, but not limited to, the implied warranties of merchantability and fitness for a particular purpose. Should the mineral lease awarded by the Louisiana State Mineral and Energy Board be subsequently modified, cancelled or abrogated due to the existence of conflicting leases, operating agreements, private claims or other future obligations or conditions which may affect all or any portion of the leased Tract, it shall not relieve the Lessee of the obligation to pay any bonus due thereon to the Louisiana State Mineral and Energy Board, nor shall the Louisiana State Mineral and Energy Board be obligated to refund any consideration paid by the Lessor prior to such modification, cancellation, or abrogation, including, but not limited to, bonuses, rentals and royalties.

NOTE: Lessee, its successors or assigns, may produce oil, gas and other minerals from the leased premises by drilling from a surface location on other lands, but notwithstanding any other provision of this lease, Lessee, its successors or assigns, shall not use the surface location of the Lessor's property for drilling or any other operations without prior written permission of Lessor, which permission may be withheld at Lessor's discretion.

NOTE: Notwithstanding anything to the contrary herein contained, at the end of the primary term or any extension thereof by operations, if the Commissioner of Conservation of the State of Louisiana establishes a drilling unit which includes a part of the land herein leased, the production of oil, gas and other minerals from such unit shall maintain this lease in full force and effect only as to such portions of the leased land embraced in said pooled unit; and this lease shall expire as to that part of the land herein leased not included in such unit; and Lessee, its successors and assigns agrees to relinquish by formal instrument any

portion of the leased land not included in a unit created by the Commissioner of Conservation while this lease is in effect.

NOTE: Upon the expiration of the primary term hereof or any extension thereof by operations, this lease shall automatically terminate and be of no further force or effect except as to all that part of the leased premises then included within the geographical boundaries of a producing unit duly established by governmental agency or authority having jurisdiction, from the surface of the earth to a depth of 100 feet below the deepest depth from which any well commenced during the primary term hereof on the leased premises or on lands pooled therewith is completed and from which there is production in paying quantities, such depth determination to be made on a unit by unit basis. In the absence of units so established, this lease shall terminate except as to 40 acres around each producing oil well and 160 acres around each producing or shut-in gas well located on the leased premises, in as near the form of a square as is practicable, from the surface of the earth down to a depth of 100 feet below the deepest depth from which said well or wells are completed and from which there is production in paying quantities, such depth determination to be made on a well by well basis.

NOTE: The Caddo Parish Commission will require a minimum royalty of 25%.

NOTE: The Caddo Parish Commission will require a minimum bonus provision of \$500.00 per acre.

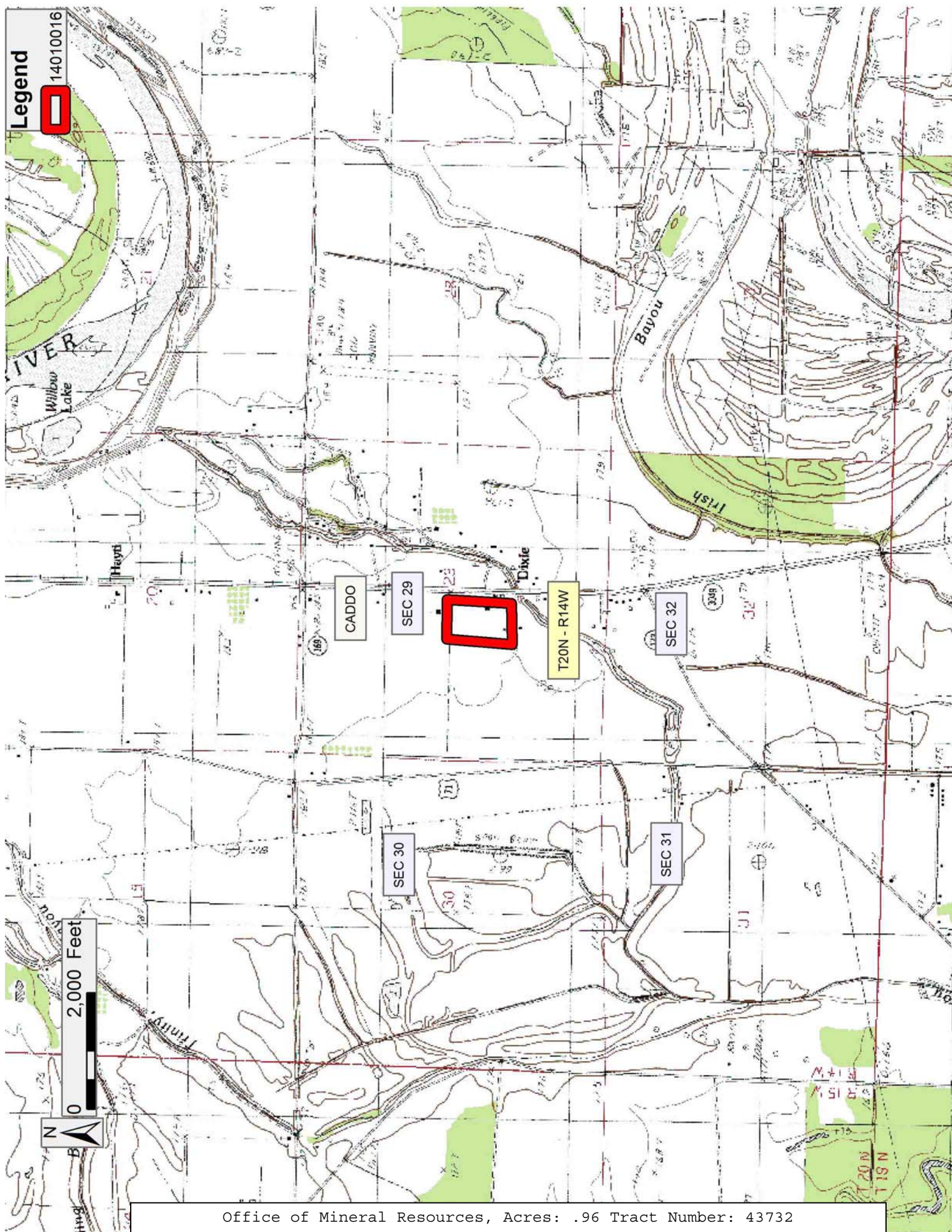
NOTE: Caddo Parish Commission hereby reserves until itself and excludes from any such lease all mineral rights from the surface down to a depth of 3,000 feet subsurface.

NOTE: Lessee agrees that all production royalties due and payable under this oil, gas and mineral lease shall be due and payable and calculated from the date that the production of oil, gas and other hydrocarbons first occurs from any unit, whether voluntary or established by the Commissioner of Conservation, in which all or any part of the property herein described is included, even if said production occurs prior to the effective date of this lease.

NOTE: Primary term of lease shall not exceed three (3) years.

Applicant: TACOMA ENERGY CORPORATION to Agency and by Resolution from the Caddo Parish Commission authorizing the Mineral Board to act in its behalf

Bidder	Cash Payment	Price/ Acre	Rental	Oil	Gas	Other



TRACT 43733 - Caddo Parish, Louisiana

A certain Tract of land, excluding the beds and bottoms of all navigable waters, belonging to and not presently under mineral lease from Caddo Parish Commission on January 8, 2014, being more fully described as follows: Certain Adjudicated property described as a tract in the South Half (S/2) of Section 29, Township 20 North, Range 14 West with a Geo. #201429 001 0023, **limited to the depths below 3,000 feet below the surface**, containing **.14 acres**, all as more particularly outlined on a plat on file in the Office of Mineral Resources, Department of Natural Resources. The description is based on information provided by the State Agency regarding location and ownership of surface and mineral rights. All bearings, distances and coordinates, if applicable, are based on Louisiana Coordinate System of 1927, (North or South Zone).

NOTE: The above description of the Tract nominated for lease has been provided and corrected, where required, exclusively by the nomination party. Any mineral lease selected from this Tract and awarded by the Louisiana State Mineral and Energy Board shall be without warranty of any kind, either express, implied, or statutory, including, but not limited to, the implied warranties of merchantability and fitness for a particular purpose. Should the mineral lease awarded by the Louisiana State Mineral and Energy Board be subsequently modified, cancelled or abrogated due to the existence of conflicting leases, operating agreements, private claims or other future obligations or conditions which may affect all or any portion of the leased Tract, it shall not relieve the Lessee of the obligation to pay any bonus due thereon to the Louisiana State Mineral and Energy Board, nor shall the Louisiana State Mineral and Energy Board be obligated to refund any consideration paid by the Lessor prior to such modification, cancellation, or abrogation, including, but not limited to, bonuses, rentals and royalties.

NOTE: Lessee, its successors or assigns, may produce oil, gas and other minerals from the leased premises by drilling from a surface location on other lands, but notwithstanding any other provision of this lease, Lessee, its successors or assigns, shall not use the surface location of the Lessor's property for drilling or any other operations without prior written permission of Lessor, which permission may be withheld at Lessor's discretion.

NOTE: Notwithstanding anything to the contrary herein contained, at the end of the primary term or any extension thereof by operations, if the Commissioner of Conservation of the State of Louisiana establishes a drilling unit which includes a part of the land herein leased, the production of oil, gas and other minerals from such unit shall maintain this lease in full force and effect only as to such portions of the leased land embraced in said pooled unit; and this lease shall expire as to that part of the land herein leased not included in such unit; and Lessee, its successors and assigns agrees to relinquish by formal instrument any

portion of the leased land not included in a unit created by the Commissioner of Conservation while this lease is in effect

NOTE: Upon the expiration of the primary term hereof or any extension thereof by operations, this lease shall automatically terminate and be of no further force or effect except as to all that part of the leased premises then included within the geographical boundaries of a producing unit duly established by governmental agency or authority having jurisdiction, from the surface of the earth to a depth of 100 feet below the deepest depth from which any well commenced during the primary term hereof on the leased premises or on lands pooled therewith is completed and from which there is production in paying quantities, such depth determination to be made on a unit by unit basis. In the absence of units so established, this lease shall terminate except as to 40 acres around each producing oil well and 160 acres around each producing or shut-in gas well located on the leased premises, in as near the form of a square as is practicable, from the surface of the earth down to a depth of 100 feet below the deepest depth from which said well or wells are completed and from which there is production in paying quantities, such depth determination to be made on a well by well basis.

NOTE: The Caddo Parish Commission will require a minimum royalty of 25%.

NOTE: The Caddo Parish Commission will require a minimum bonus provision of \$500.00 per acre.

NOTE: Caddo Parish Commission hereby reserves until itself and excludes from any such lease all mineral rights from the surface down to a depth of 3,000 feet subsurface.

NOTE: Lessee agrees that all production royalties due and payable under this oil, gas and mineral lease shall be due and payable and calculated from the date that the production of oil, gas and other hydrocarbons first occurs from any unit, whether voluntary or established by the Commissioner of Conservation, in which all or any part of the property herein described is included, even if said production occurs prior to the effective date of this lease.

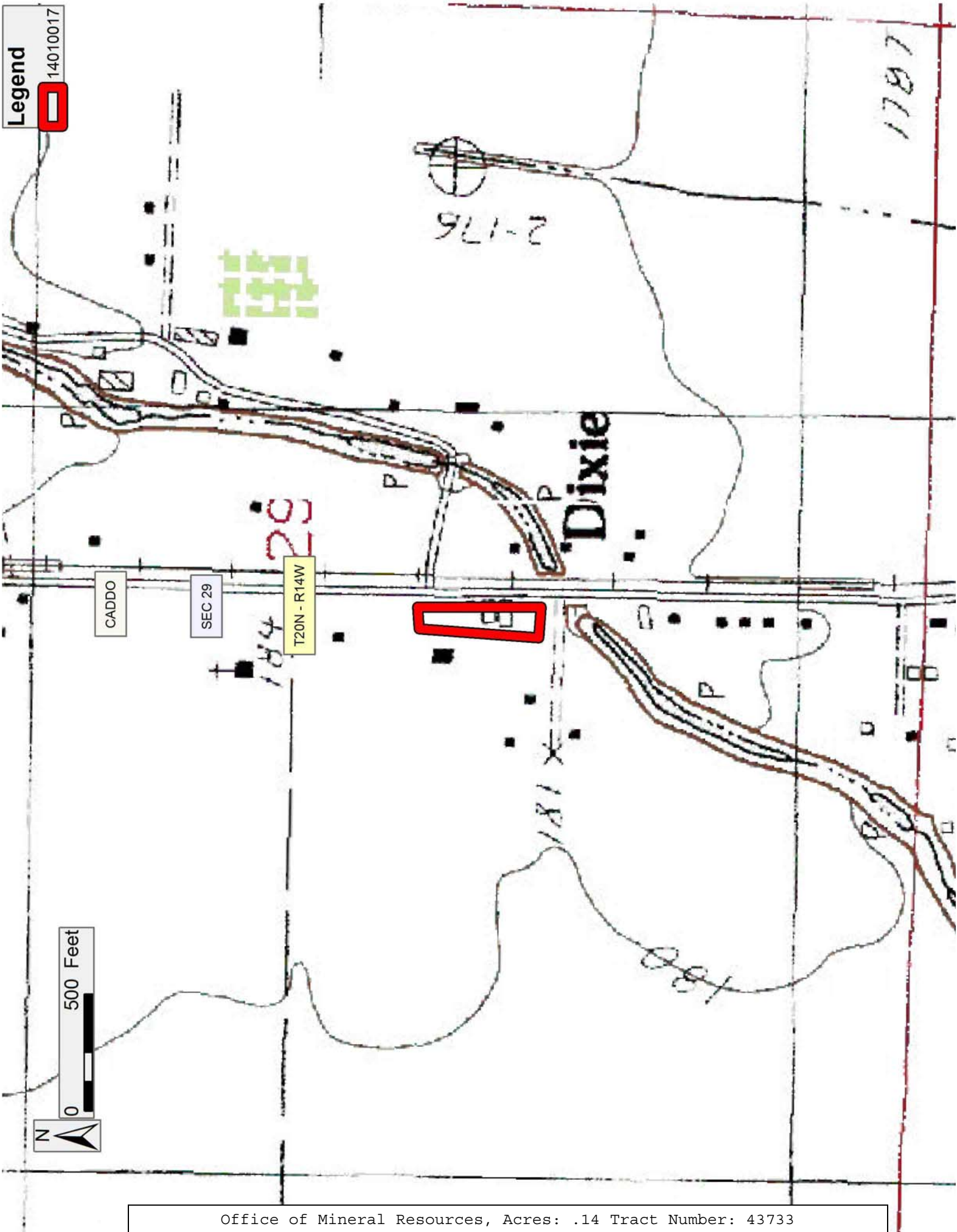
NOTE: Primary term of lease shall not exceed three (3) years.

Applicant: TACOMA ENERGY CORPORATION to Agency and by Resolution from the Caddo Parish Commission authorizing the Mineral Board to act in its behalf

Bidder	Cash Payment	Price/ Acre	Rental	Oil	Gas	Other

Legend

14010017



TRACT 43734 - Caddo Parish, Louisiana

A certain Tract of land, excluding the beds and bottoms of all navigable waters, belonging to and not presently under mineral lease from Caddo Parish Commission on January 8, 2014, being more fully described as follows: Certain Road dedications in the Soda Bluff Subdivision located in Section 10, Township 19 North, Range 15 West, known as Wood Duck Drive, Soda Hill Drive and Soda Point Drive, **limited to the depths below 3,000 feet below the surface**, containing **4 acres**, all as more particularly outlined on a plat on file in the Office of Mineral Resources, Department of Natural Resources. The description is based on information provided by the State Agency regarding location and ownership of surface and mineral rights. All bearings, distances and coordinates, if applicable, are based on Louisiana Coordinate System of 1927, (North or South Zone).

NOTE: The above description of the Tract nominated for lease has been provided and corrected, where required, exclusively by the nomination party. Any mineral lease selected from this Tract and awarded by the Louisiana State Mineral and Energy Board shall be without warranty of any kind, either express, implied, or statutory, including, but not limited to, the implied warranties of merchantability and fitness for a particular purpose. Should the mineral lease awarded by the Louisiana State Mineral and Energy Board be subsequently modified, cancelled or abrogated due to the existence of conflicting leases, operating agreements, private claims or other future obligations or conditions which may affect all or any portion of the leased Tract, it shall not relieve the Lessee of the obligation to pay any bonus due thereon to the Louisiana State Mineral and Energy Board, nor shall the Louisiana State Mineral and Energy Board be obligated to refund any consideration paid by the Lessor prior to such modification, cancellation, or abrogation, including, but not limited to, bonuses, rentals and royalties.

NOTE: Lessee, its successors or assigns, may produce oil, gas and other minerals from the leased premises by drilling from a surface location on other lands, but notwithstanding any other provision of this lease, Lessee, its successors or assigns, shall not use the surface location of the Lessor's property for drilling or any other operations without prior written permission of Lessor, which permission may be withheld at Lessor's discretion.

NOTE: Notwithstanding anything to the contrary herein contained, at the end of the primary term or any extension thereof by operations, if the Commissioner of Conservation of the State of Louisiana establishes a drilling unit which includes a part of the land herein leased, the production of oil, gas and other minerals from such unit shall maintain this lease in full force and effect only as to such portions of the leased land embraced in said pooled unit; and this lease shall expire as to that part of the land herein leased not included in such unit; and Lessee, its successors and assigns agrees to relinquish by formal instrument any

portion of the leased land not included in a unit created by the Commissioner of Conservation while this lease is in effect.

NOTE: Upon the expiration of the primary term hereof or any extension thereof by operations, this lease shall automatically terminate and be of no further force or effect except as to all that part of the leased premises then included within the geographical boundaries of a producing unit duly established by governmental agency or authority having jurisdiction, from the surface of the earth to a depth of 100 feet below the deepest depth from which any well commenced during the primary term hereof on the leased premises or on lands pooled therewith is completed and from which there is production in paying quantities, such depth determination to be made on a unit by unit basis. In the absence of units so established, this lease shall terminate except as to 40 acres around each producing oil well and 160 acres around each producing or shut-in gas well located on the leased premises, in as near the form of a square as is practicable, from the surface of the earth down to a depth of 100 feet below the deepest depth from which said well or wells are completed and from which there is production in paying quantities, such depth determination to be made on a well by well basis.

NOTE: The Caddo Parish Commission will require a minimum royalty of 25%.

NOTE: The Caddo Parish Commission will require a minimum bonus provision of \$500.00 per acre.

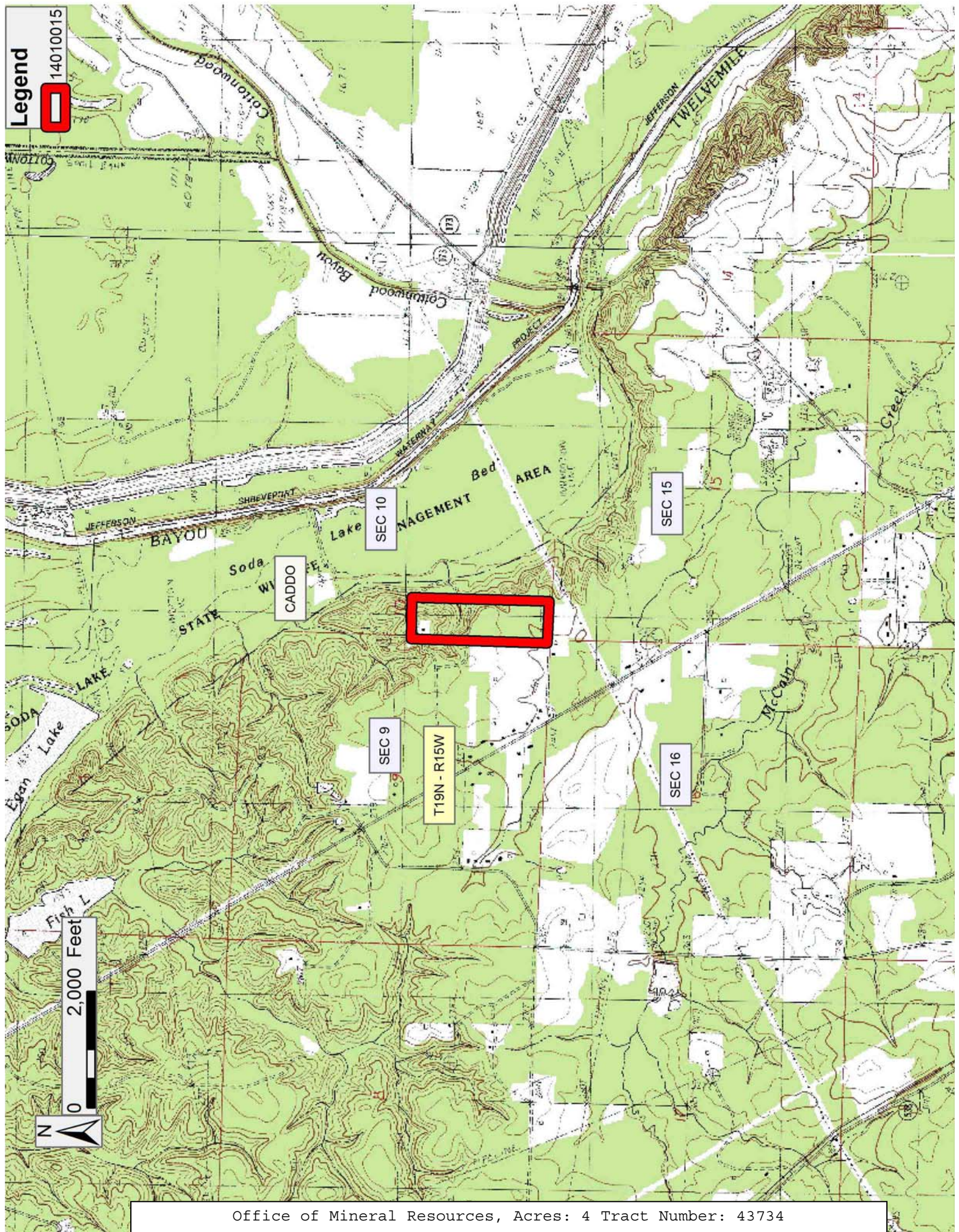
NOTE: Caddo Parish Commission hereby reserves until itself and excludes from any such lease all mineral rights from the surface down to a depth of 3,000 feet subsurface.

NOTE: Lessee agrees that all production royalties due and payable under this oil, gas and mineral lease shall be due and payable and calculated from the date that the production of oil, gas and other hydrocarbons first occurs from any unit, whether voluntary or established by the Commissioner of Conservation, in which all or any part of the property herein described is included, even if said production occurs prior to the effective date of this lease.

NOTE: Primary term of lease shall not exceed three (3) years.

Applicant: TACOMA ENERGY CORPORATION to Agency and by Resolution from the Caddo Parish Commission authorizing the Mineral Board to act in its behalf

Bidder	Cash Payment	Price/ Acre	Rental	Oil	Gas	Other



Legend

14010015



TRACT 43735 - Acadia Parish School Board - Acadia Parish, Louisiana

The State Mineral and Energy Board acting on behalf of the Acadia Parish School Board, pursuant to Resolution(s) adopted by that (those) body(ies) and in accordance with Louisiana Revised Statutes 30:121-136 and 151-156, as amended, and Article XIV, Section 16(A)(9) and (B) of the Louisiana Constitution of 1974, as same may be continued and promulgated in proper statutory form and, further, amended from time to time, advertises the lands not under mineral lease on January 8, 2014, excluding the beds and bottoms of all navigable water bodies located within the following: All or a portion of Section 9 and 10 and 15 and 16 and 21 and 22, Township 07 South, Range 01 West in Acadia Parish, Louisiana, Being all of Section 16, Township 7 South Range 1 West, containing approximately **581 acres**, all as more particularly outlined on a plat on file in the Office of Mineral Resources, Department of Natural Resources. All bearings, distances and coordinates are based on Louisiana Coordinate System of 1927, (North or South Zone).

NOTE: The above description of the Tract nominated for lease has been provided and corrected, where required, exclusively by the nomination party. Any mineral lease selected from this Tract and awarded by the Louisiana State Mineral and Energy Board shall be without warranty of any kind, either express, implied, or statutory, including, but not limited to, the implied warranties of merchantability and fitness for a particular purpose. Should the mineral lease awarded by the Louisiana State Mineral and Energy Board be subsequently modified, cancelled or abrogated due to the existence of conflicting leases, operating agreements, private claims or other future obligations or conditions which may affect all or any portion of the leased Tract, it shall not relieve the Lessee of the obligation to pay any bonus due thereon to the Louisiana State Mineral and Energy Board, nor shall the Louisiana State Mineral and Energy Board be obligated to refund any consideration paid by the Lessor prior to such modification, cancellation, or abrogation, including, but not limited to, bonuses, rentals and royalties.

NOTE: The Acadia Parish School Board will require a minimum bonus of \$300 per acre and a minimum royalty of 25%.

Bidder	Cash Payment	Price/Acre	Rental	Oil	Gas	Other

Applicant: PRIDE OIL & GAS PROPERTIES, INC. to Agency and by Resolution from the Acadia Parish School Board authorizing the Mineral Board to act in its behalf

