

TRACT 44597 - Vermilion Parish, Louisiana

A certain Tract of land, excluding the beds and bottoms of all navigable waters, belonging to and not presently under mineral lease from Louisiana Department Of Transportation And Development on September 14, 2016, being more fully described as follows: Beginning at a point having Coordinates of X = 1,746,660.68 and Y = 498,605.41; thence North 89 degrees 33 minutes 16 seconds East 3,198.52 feet to a point having the Coordinates of X = 1,749,859.10 and Y = 498,630.29; thence South 89 degrees 57 minutes 49 seconds East 1,088.62 feet to a point having the Coordinates of X = 1,750,947.72 and Y = 498,629.59; thence South 12,906.63 feet to a point having the Coordinates of X = 1,750,947.72 and Y = 485,722.96; thence South 51 degrees 54 minutes 42 seconds West a distance of 2,787.09 feet to a point having the Coordinates of X = 1,748,754.11 and Y = 484,003.67; thence West 2,093.43 feet to a point having the Coordinates of X = 1,746,660.68 and Y = 484,003.67; thence North 14,601.74 feet to the point of beginning, containing approximately **76.16 acres**, all as more particularly outlined on a plat on file in the Office of Mineral Resources, Department of Natural Resources. The description is based on information provided by the State Agency regarding location and ownership of surface and mineral rights. All bearings, distances and coordinates, if applicable, are based on Louisiana Coordinate System of 1927, (North or South Zone).

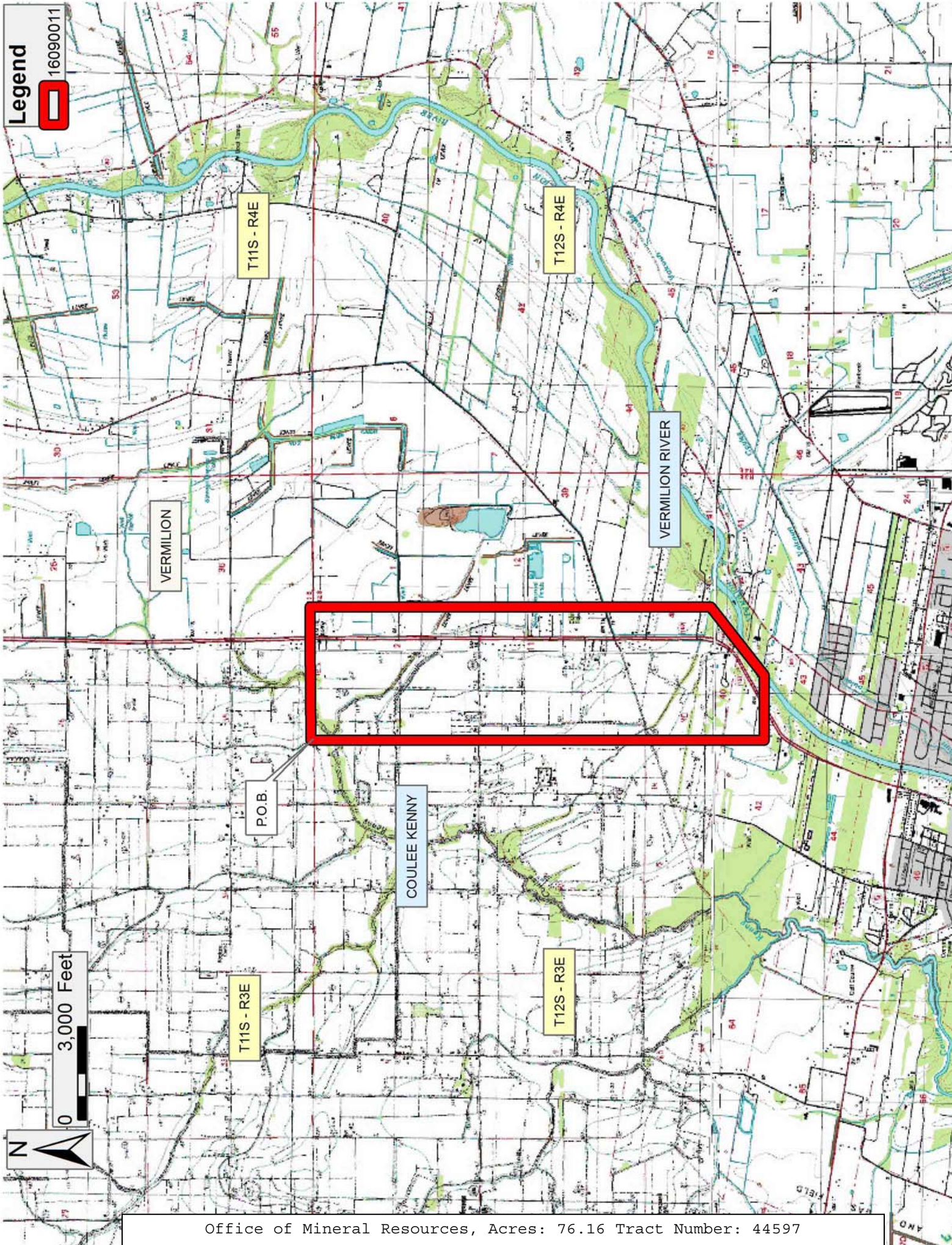
NOTE: The above description of the Tract nominated for the purpose of acquiring a mineral lease or a geophysical agreement has been provided and corrected, where required, exclusively by the nominating party. Any mineral lease or geophysical agreement selected from this Tract and awarded by the Louisiana State Mineral and Energy Board shall be without warranty of any kind, either express, implied or statutory including, but not limited to, title or the implied warranties of merchantability and fitness for a particular purpose.

An error or omission in the nominating party's Tract description may require that a State mineral lease or geophysical agreement be modified, canceled or abrogated due to the existence of conflicting leases, operating agreements, private claims or other future obligations or conditions within the Tract described. In such case, however, the Louisiana State Mineral and Energy Board shall not be obligated to refund any consideration paid by the Lessee prior to such modification, cancellation or abrogation including, but not limited to, bonuses, rentals and royalties.

NOTE: No surface operations will be performed on the property.

Applicant: PATRICK L. DONOHUE PETROLEUM PROPERTIES, INC. to Agency and by Resolution from the Louisiana Department Of Transportation And Development authorizing the Mineral Board to act in its behalf

Bidder	Cash Payment	Price/ Acre	Rental	Oil	Gas	Other



TRACT 44598 - Vermilion Parish, Louisiana

A certain Tract of land, excluding the beds and bottoms of all navigable waters, belonging to and not presently under mineral lease from Louisiana Department Of Transportation And Development on September 14, 2016, being more fully described as follows: Beginning at a point having Coordinates of X = 1,762,999.95 and Y = 487,405.05; thence North 46 degrees 21 minutes 32 seconds West 6,175.06 feet to a point having the Coordinates of X = 1,758,531.20 and Y = 491,666.69; thence North 52 degrees 03 minutes 33 seconds East 11,228.90 feet to a point having the Coordinates of X = 1,767,386.82 and Y = 498,570.75; thence South 89 degrees 02 minutes 24 seconds East 978.24 feet to a point having the Coordinates of X = 1,768,364.93 and Y = 498,554.36; thence South 46 degrees 07 minutes 41 seconds East 5,781.51 feet to a point having the Coordinates of X = 1,772,532.76 and Y = 494,547.49; thence South 53 degrees 09 minutes 28 seconds West 11,911.71 feet to a the point of beginning, containing approximately **25.62 acres**, all as more particularly outlined on a plat on file in the Office of Mineral Resources, Department of Natural Resources. The description is based on information provided by the State Agency regarding location and ownership of surface and mineral rights. All bearings, distances and coordinates, if applicable, are based on Louisiana Coordinate System of 1927, (North or South Zone).

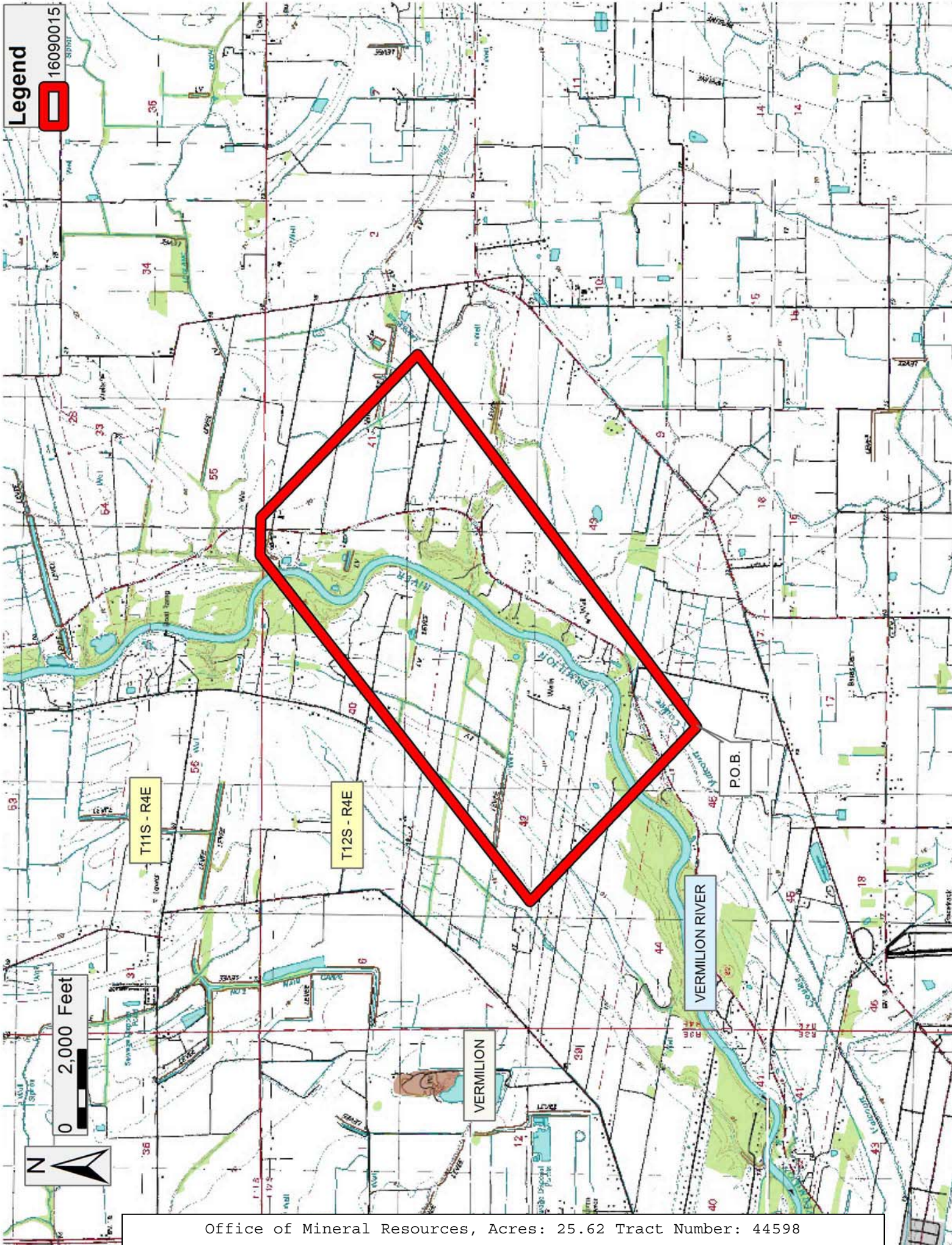
NOTE: The above description of the Tract nominated for the purpose of acquiring a mineral lease or a geophysical agreement has been provided and corrected, where required, exclusively by the nominating party. Any mineral lease or geophysical agreement selected from this Tract and awarded by the Louisiana State Mineral and Energy Board shall be without warranty of any kind, either express, implied or statutory including, but not limited to, title or the implied warranties of merchantability and fitness for a particular purpose.

An error or omission in the nominating party's Tract description may require that a State mineral lease or geophysical agreement be modified, canceled or abrogated due to the existence of conflicting leases, operating agreements, private claims or other future obligations or conditions within the Tract described. In such case, however, the Louisiana State Mineral and Energy Board shall not be obligated to refund any consideration paid by the Lessee prior to such modification, cancellation or abrogation including, but not limited to, bonuses, rentals and royalties.

NOTE: No surface operations will be performed on the property.

Applicant: PATRICK L. DONOHUE PETROLEUM PROPERTIES, INC. to Agency and by Resolution from the Louisiana Department Of Transportation And Development authorizing the Mineral Board to act in its behalf

Bidder	Cash Payment	Price/ Acre	Rental	Oil	Gas	Other



TRACT 44599 - Vermilion Parish, Louisiana

A certain Tract of land, excluding the beds and bottoms of all navigable waters, belonging to and not presently under mineral lease from Louisiana Department Of Transportation And Development on September 14, 2016, being more fully described as follows: Beginning at a point having Coordinates of X = 1,758,531.20 and Y = 491,666.69; thence South 46 degrees 21 minutes 32 seconds East 7,034.68 feet to a point having the Coordinates of X = 1,763,622.04 and Y = 486,811.80; thence South 49 degrees 04 minutes 38 seconds West 14,145.99 feet to a point having the Coordinates of X = 1,752,933.43 and Y = 477,545.59; thence North 44 degrees 13 minutes 39 seconds West 7,705.21 feet to a point having the Coordinates of X = 1,747,558.98 and Y = 483,066.96; thence North 51 degrees 54 minutes 42 seconds East 13,940.76 feet to the point of beginning, containing approximately **49.62 acres**, all as more particularly outlined on a plat on file in the Office of Mineral Resources, Department of Natural Resources. The description is based on information provided by the State Agency regarding location and ownership of surface and mineral rights. All bearings, distances and coordinates, if applicable, are based on Louisiana Coordinate System of 1927, (North or South Zone).

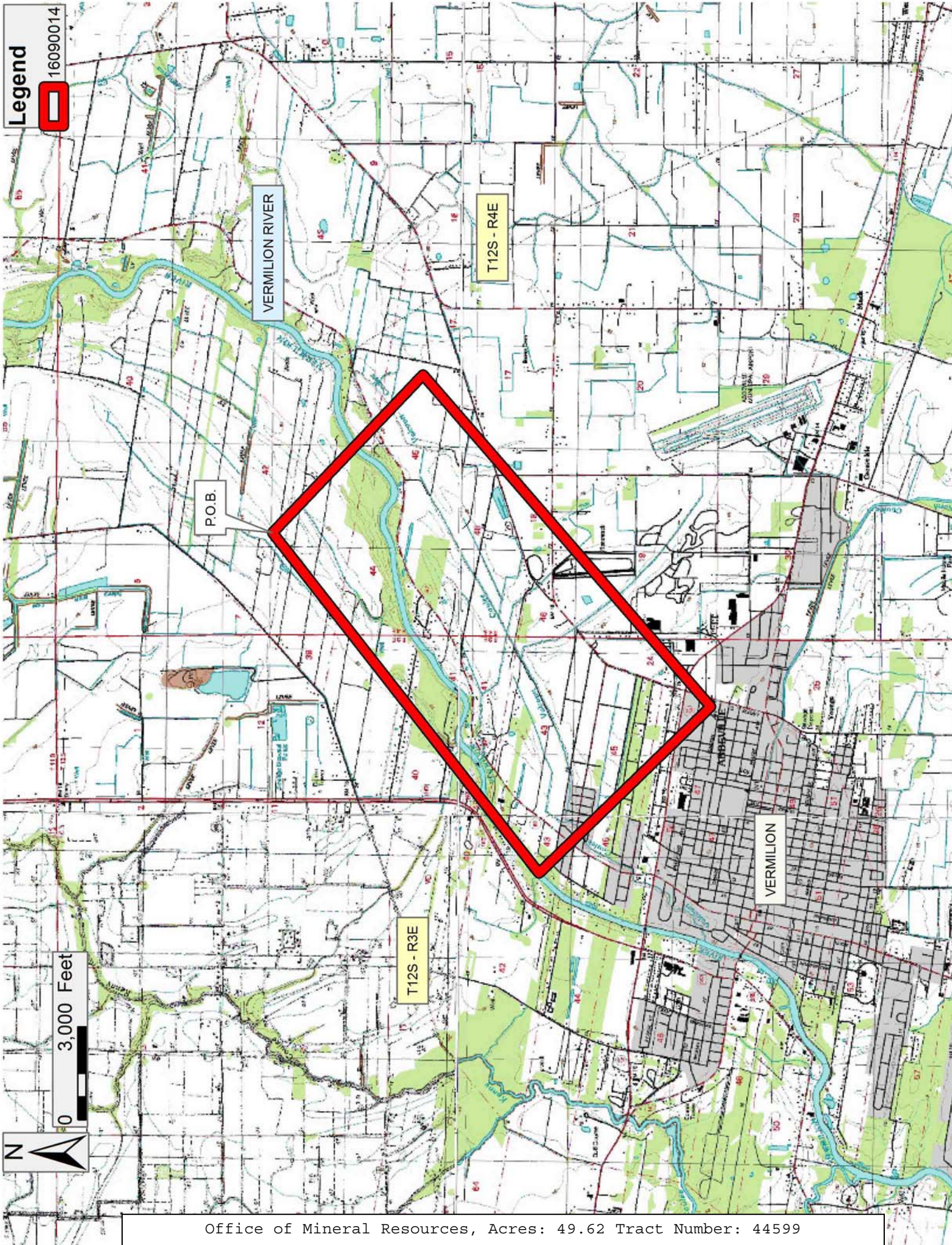
NOTE: The above description of the Tract nominated for the purpose of acquiring a mineral lease or a geophysical agreement has been provided and corrected, where required, exclusively by the nominating party. Any mineral lease or geophysical agreement selected from this Tract and awarded by the Louisiana State Mineral and Energy Board shall be without warranty of any kind, either express, implied or statutory including, but not limited to, title or the implied warranties of merchantability and fitness for a particular purpose.

An error or omission in the nominating party's Tract description may require that a State mineral lease or geophysical agreement be modified, canceled or abrogated due to the existence of conflicting leases, operating agreements, private claims or other future obligations or conditions within the Tract described. In such case, however, the Louisiana State Mineral and Energy Board shall not be obligated to refund any consideration paid by the Lessee prior to such modification, cancellation or abrogation including, but not limited to, bonuses, rentals and royalties.

NOTE: No surface operations will be performed on the property.

Applicant: PATRICK L. DONOHUE PETROLEUM PROPERTIES, INC. to Agency and by Resolution from the Louisiana Department Of Transportation And Development authorizing the Mineral Board to act in its behalf

Bidder	Cash Payment	Price/ Acre	Rental	Oil	Gas	Other



TRACT 44600 - Vermilion Parish, Louisiana

A certain Tract of land, excluding the beds and bottoms of all navigable waters, belonging to and not presently under mineral lease from Louisiana Department Of Transportation And Development on September 14, 2016, being more fully described as follows: Beginning at a point having Coordinates of X = 1,748,754.11 and Y = 484,003.67; thence South 51 degrees 54 minutes 42 seconds West 1,518.48 feet to a point having the Coordinates of X = 1,747,558.98 and Y = 483,066.96; thence South 44 degrees 13 minutes 39 seconds East 1,500.15 feet to a point having the Coordinates of X = 1,748,605.35 and Y = 481,991.99; thence South 15,750.06 feet to a point having the Coordinates of X = 1,748,605.35 and Y = 466,241.93; thence West 15,444.09 feet to a point having the Coordinates of X = 1,733,161.26 and Y = 466,241.93; thence North 17,761.74 feet to a point having the Coordinates of X = 1,733,161.26 and Y = 484,003.67; thence East 15,592.85 feet to the point of beginning, containing approximately **170.24 acres**, all as more particularly outlined on a plat on file in the Office of Mineral Resources, Department of Natural Resources. The description is based on information provided by the State Agency regarding location and ownership of surface and mineral rights. All bearings, distances and coordinates, if applicable, are based on Louisiana Coordinate System of 1927, (North or South Zone).

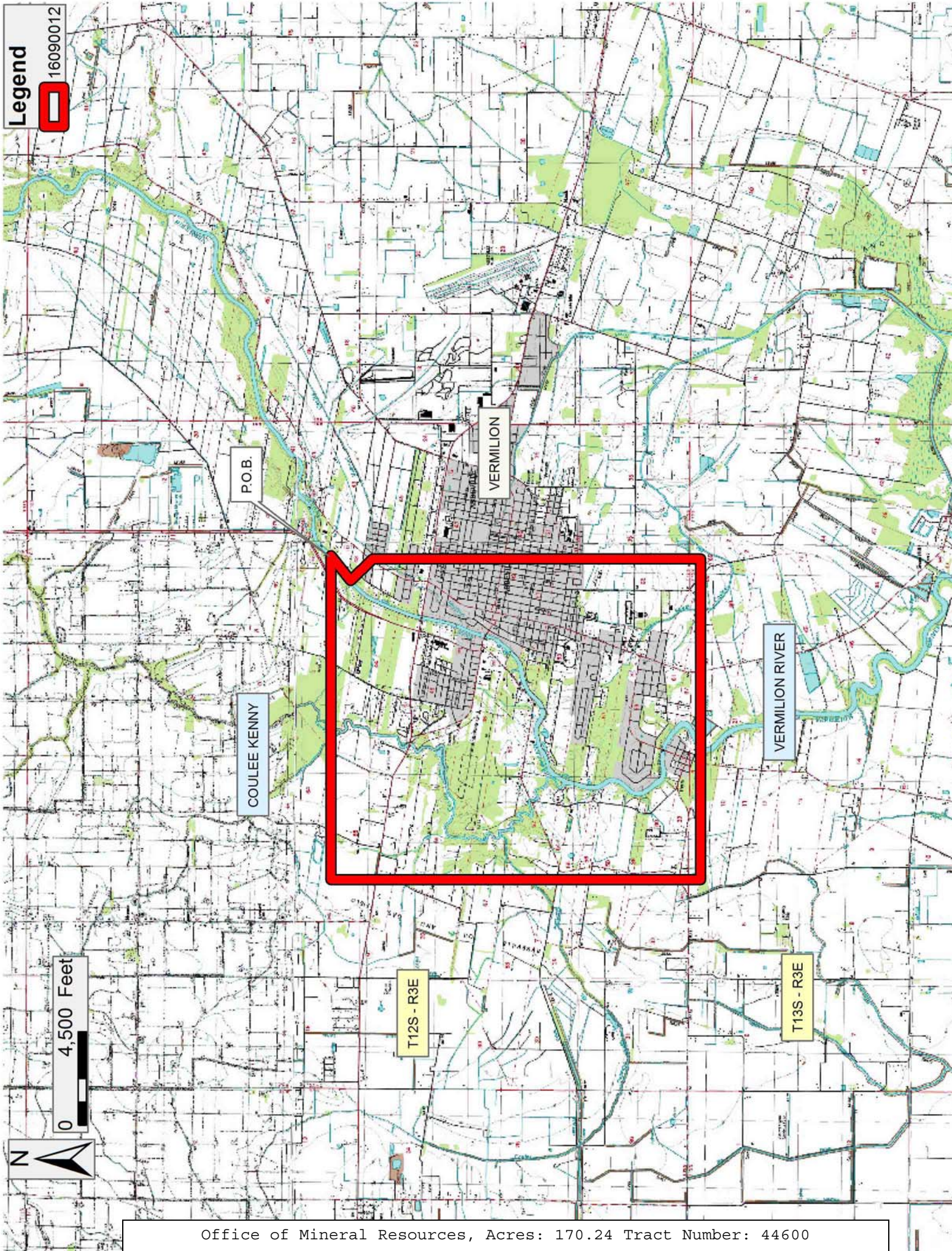
NOTE: The above description of the Tract nominated for the purpose of acquiring a mineral lease or a geophysical agreement has been provided and corrected, where required, exclusively by the nominating party. Any mineral lease or geophysical agreement selected from this Tract and awarded by the Louisiana State Mineral and Energy Board shall be without warranty of any kind, either express, implied or statutory including, but not limited to, title or the implied warranties of merchantability and fitness for a particular purpose.

An error or omission in the nominating party's Tract description may require that a State mineral lease or geophysical agreement be modified, canceled or abrogated due to the existence of conflicting leases, operating agreements, private claims or other future obligations or conditions within the Tract described. In such case, however, the Louisiana State Mineral and Energy Board shall not be obligated to refund any consideration paid by the Lessee prior to such modification, cancellation or abrogation including, but not limited to, bonuses, rentals and royalties.

NOTE: No surface operations will be performed on the property.

Applicant: PATRICK L. DONOHUE PETROLEUM PROPERTIES, INC. to Agency and by Resolution from the Louisiana Department Of Transportation And Development authorizing the Mineral Board to act in its behalf

Bidder	Cash Payment	Price/ Acre	Rental	Oil	Gas	Other



TRACT 44601 - Vermilion Parish, Louisiana

A certain Tract of land, excluding the beds and bottoms of all navigable waters, belonging to and not presently under mineral lease from Louisiana Department Of Transportation And Development on September 14, 2016, being more fully described as follows: Beginning at a point having Coordinates of X = 1,748,605.35 and Y = 481,991.99; thence South 44 degrees 13 minutes 39 seconds East 6,205.06 feet to a point having the Coordinates of X = 1,752,933.43 and Y = 477,545.59; thence North 49 degrees 04 minutes 38 seconds East 2,898.39 feet to a point having the Coordinates of X = 1,755,123.44 and Y = 479,444.16; thence South 00 degrees 48 minutes 10 seconds West 2,084.69 feet to a point having the Coordinates of X = 1,755,094.23 and Y = 477,359.67; thence South 00 degrees 1 minutes 31 seconds West 5,307.45 feet to a point having the Coordinates of X = 1,755,091.90 and Y = 472,052.22; thence South 00 degrees 12 minutes 6 seconds East 5,810.32 feet to a point having the Coordinates of X = 1,755,112.36 and Y = 466,241.93; thence West 6,507.01 feet to a point having the Coordinates of X = 1,748,605.35 and Y = 466,241.93; thence North West 15,750.06 feet to the point of beginning, containing approximately **38.74 acres**, all as more particularly outlined on a plat on file in the Office of Mineral Resources, Department of Natural Resources. The description is based on information provided by the State Agency regarding location and ownership of surface and mineral rights. All bearings, distances and coordinates, if applicable, are based on Louisiana Coordinate System of 1927, (North or South Zone).

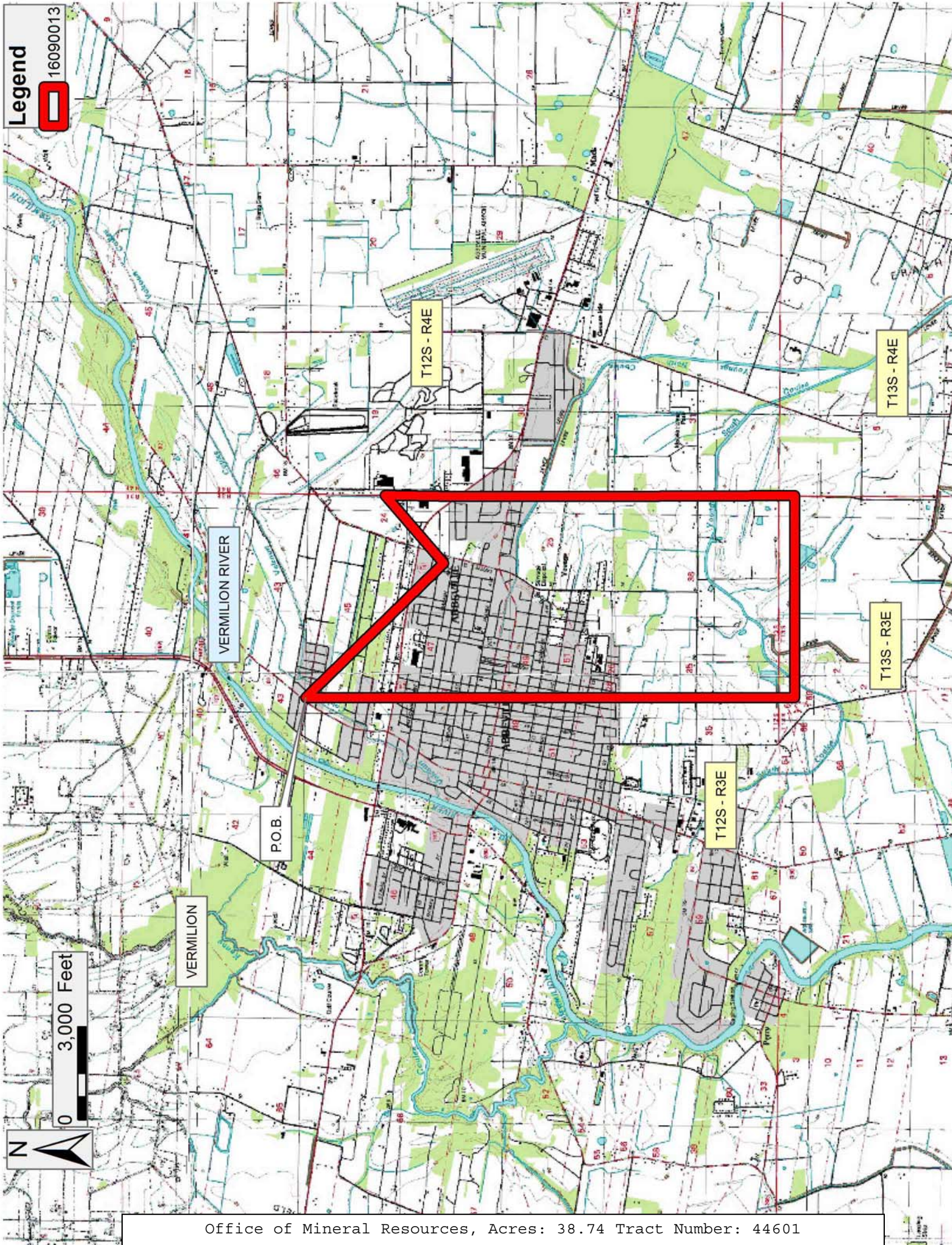
NOTE: The above description of the Tract nominated for the purpose of acquiring a mineral lease or a geophysical agreement has been provided and corrected, where required, exclusively by the nominating party. Any mineral lease or geophysical agreement selected from this Tract and awarded by the Louisiana State Mineral and Energy Board shall be without warranty of any kind, either express, implied or statutory including, but not limited to, title or the implied warranties of merchantability and fitness for a particular purpose.

An error or omission in the nominating party's Tract description may require that a State mineral lease or geophysical agreement be modified, canceled or abrogated due to the existence of conflicting leases, operating agreements, private claims or other future obligations or conditions within the Tract described. In such case, however, the Louisiana State Mineral and Energy Board shall not be obligated to refund any consideration paid by the Lessee prior to such modification, cancellation or abrogation including, but not limited to, bonuses, rentals and royalties.

NOTE: No surface operations will be performed on the property.

Applicant: PATRICK L. DONOHUE PETROLEUM PROPERTIES, INC. to Agency and by Resolution from the Louisiana Department Of Transportation And Development authorizing the Mineral Board to act in its behalf

Bidder	Cash Payment	Price/ Acre	Rental	Oil	Gas	Other



TRACT 44602 - Vermilion Parish, Louisiana

A certain Tract of land, excluding the beds and bottoms of all navigable waters, belonging to and not presently under mineral lease from Louisiana Department Of Transportation And Development on September 14, 2016, being more fully described as follows: That certain tract or parcel of land lying and being situated in Section 46, Township 12 South, Range 3 East, Vermilion Parish, Louisiana, being bounded now or formerly as follows: North by K.A.S. Properties, LLC; East by Abbeville Country Estates, LLC; South by remaining lots of Shadyside Addition Subdivision; and West by W. Port Street. Said tract being the State of Louisiana DOTD Maintenance/Storage Yard known as the "Abbeville Maintenance Unit" and more particularly outlined on a plat on file in the Office of Mineral Resources, Department of Natural Resources, containing approximately **7.13 acres**, , all as more particularly outlined on a plat on file in the Office of Mineral Resources, Department of Natural Resources. The description is based on information provided by the State Agency regarding location and ownership of surface and mineral rights. All bearings, distances and coordinates, if applicable, are based on Louisiana Coordinate System of 1927, (North or South Zone).

NOTE: The above description of the Tract nominated for the purpose of acquiring a mineral lease or a geophysical agreement has been provided and corrected, where required, exclusively by the nominating party. Any mineral lease or geophysical agreement selected from this Tract and awarded by the Louisiana State Mineral and Energy Board shall be without warranty of any kind, either express, implied or statutory including, but not limited to, title or the implied warranties of merchantability and fitness for a particular purpose.

An error or omission in the nominating party's Tract description may require that a State mineral lease or geophysical agreement be modified, canceled or abrogated due to the existence of conflicting leases, operating agreements, private claims or other future obligations or conditions within the Tract described. In such case, however, the Louisiana State Mineral and Energy Board shall not be obligated to refund any consideration paid by the Lessee prior to such modification, cancellation or abrogation including, but not limited to, bonuses, rentals and royalties.

NOTE: No surface operations will be performed on the property.

Applicant: PATRICK L. DONOHUE PETROLEUM PROPERTIES, INC. to Agency and by Resolution from the Louisiana Department Of Transportation And Development authorizing the Mineral Board to act in its behalf

Bidder	Cash Payment	Price/ Acre	Rental	Oil	Gas	Other

